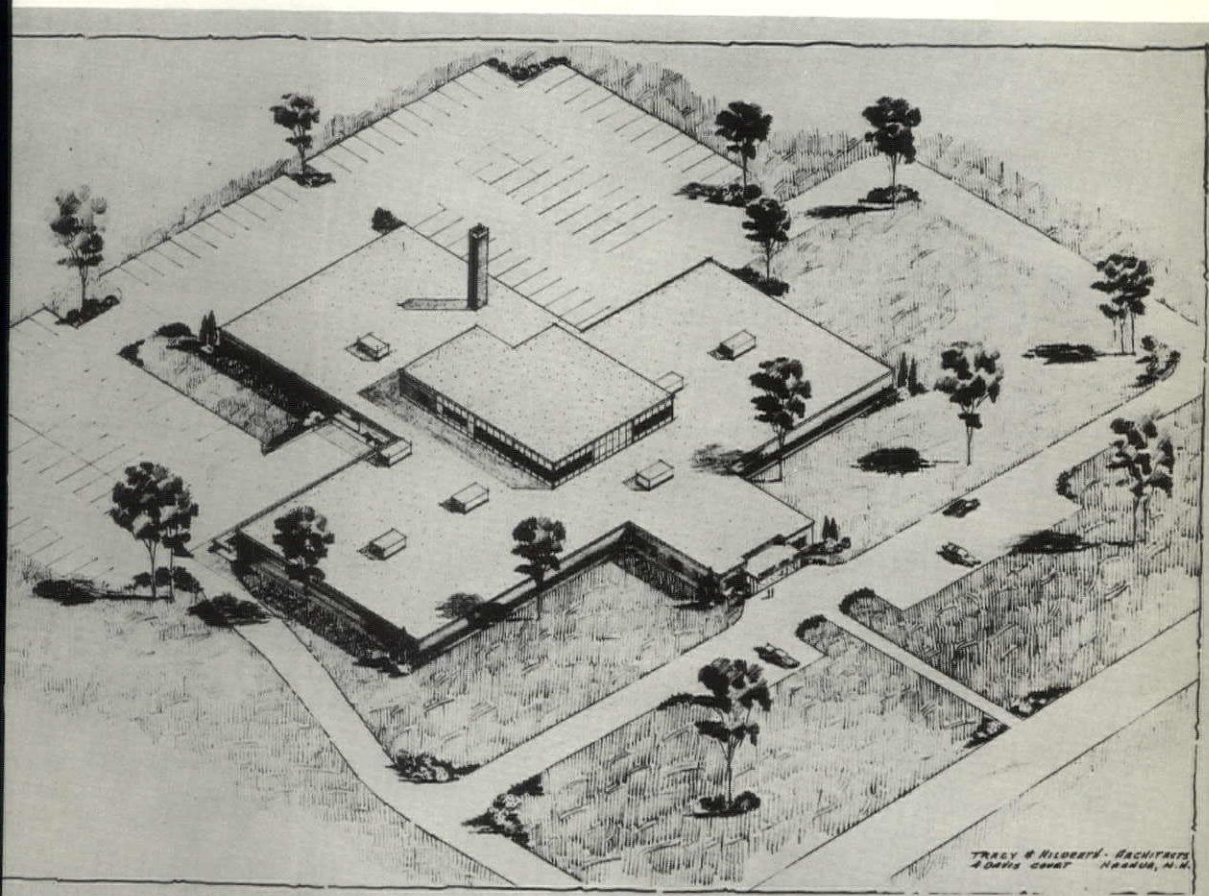


c/

# *New Hampshire* **ARCHITECT**

AMERICAN INSTITUTE  
OF  
ARCHITECTS  
AUG 5 1957  
LIBRARY



OFFICIAL PUBLICATION

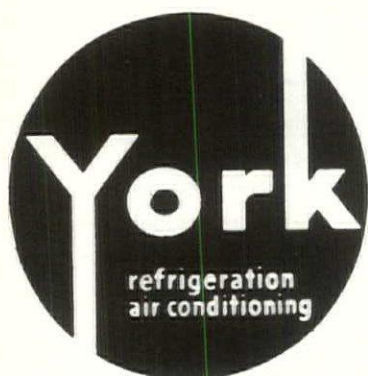
*New Hampshire Chapter of the American Institute of Architects*



JULY  
1957

20c A COPY  
\$2.00 A YEAR

AIR CONDITIONING  
Residential - Commercial - Industrial



Year-Round or Summer

Engineering Assistance Available For Your  
Air Conditioning Problems

**NEW HAMPSHIRE YORK CO.**  
720 Union St.      Manchester, N. H.

## New England Brick Co.

GONIC, N. H.

MANUFACTURERS OF  
GONIC HARVARD WATERSTRUCK

Warehouse at Gonic for your convenience

FACE BRICK—Standard size and Roman size

QUARRY TILE—Buff and Red 6 x 6

BUILDERS SPECIALTY HARDWARE—Ash

Dumps - Attic Vents - Bell Traps - Brick Vents

- Clean-out Doors - Dampers - Wall Ties.

Main Office

324 Rindge Avenue      Cambridge 40, Mass.  
Telephone UNiversity 4-5540

## NEW ENGLAND INSULATION CO.

*Contractors - Distributors*

ASBESTOS    MAGNESIA    FIBERGLASS

KAYLO and CORK PIPE COVERINGS

ASBESTOS MILLBOARD & PAPER

Tel. Highlands 5-7800

839-845 Albany St.      Boston 19, Mass.

ARTHUR E. SWANSON, Manager

NOW AVAILABLE

## OROSTONE Plastic Cement

Unique, Modern Decorative Finish  
and Protective Coating  
for Exterior

ROOFS - WALLS - PANELS - COLUMNS

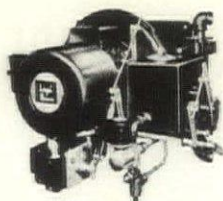
Permanence of Stone  
Strikingly Attractive  
Completely Waterproof  
Flexible

Bulletin and Specifications on Request

**California Stucco  
Products of N. E., Inc.**

169 Waverly Street — Cambridge 39, Mass.  
Kirkland 7-5300





**D. H. McClarty Co.**  
**Heating and Plumbing**

## **JOHNSON OIL BURNERS**

**THE FINEST IN HEAVY OIL  
BURNING EQUIPMENT**

7 McCauley St.      Manchester, N. H.  
 Phone 5-8693

## **MANCHESTER SUPPLY COMPANY**

**Railroad Square  
MANCHESTER, N. H.**



**Established 1890**  
**Joseph W. Epply, Pres.**  
**Wm. Hayes, Treas.**

**Pioneer Wholesalers  
of  
Plumbing and Heating  
Supplies**



**More storage space at lower  
cost with new, column free**

## **STRAN-STEEL BUILDINGS**

Stran-Steel's clear span construction is an important feature to remember when you're building a warehouse. This unobstructed interior design gives you more room — wall to wall, floor to ceiling. That means more efficient materials handling, greater storage space.



The above is one of our STRAN-STEEL Buildings recently erected for Bob Kurlansky, Owner, Standard Fence Co., 2510 Candia Rd., Manchester, N. H.

**CORRIVEAU-ROUTHIER CEMENT BLOCK CO.**  
**266 Clay Street — Manchester, N. H.**  
 NAtional 2-3506 or Laconia, N. H. 1877-M

# Architects

have long recognized the benefits derived from the timely, systematic interchange of information in the construction field. They find that this benefits their clients and all concerned . . . brings a wider range of bids . . . brings more complete news of new products, new trends, new techniques. And it saves much time that might otherwise be wasted on salesmen uninformed as to the architects' current interests.

This information, incorporated in Dodge Reports, is helpful to all firms in new construction. And it guides the *right* supplier's salesman to the *right* architect at the *right* time.

That's why for more than 65 years architects have found it good practice to provide their Dodge reporters with complete information about their work.

## DODGE REPORTS

Construction News Service

31 St. James Avenue, Boston 16  
119 West 40th Street, New York 18



OIL BURNERS

FURNACES

VENTILATION

JEAN LAMEY

405 No. Main Street  
MANCHESTER, N. H.

ARCHITECTURAL SHEET METAL WORK  
AIR CONDITIONING



FRANKLIN, N. H.

WESCOTT CONCRETE  
CORPORATION

LAKEPORT P. O. BOX #132  
PHONE 2718

Products of **Sonneborn** RESEARCH



- Laconia
- Meredith
- Holderness
- Ashland
- Plymouth
- Rumney
- Center Harbor
- Moultonboro
- Ossipee
- Wolfeboro
- Alton
- Pittsfield

- Franklin
- Tilton
- Boscawen
- Bristol
- Andover
- New London
- Newfound Lake Area

SERVING —

CENTRAL NEW HAMPSHIRE

- Structural Concrete
- Lightweight Structural Concrete (Haydite-Norlite)
- Insulating Concrete (Permalite Roof Fill)

QUALITY PRODUCTS  
DEPENDABLE SERVICE

CENTRAL DISPATCH OFFICE

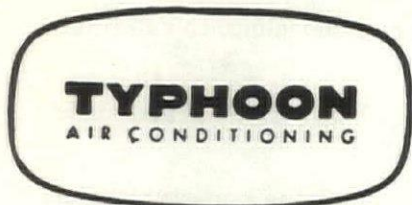


LACONIA, N. H.

Laconia 2718  
Accounting Office  
Laconia 2754



SEE US AT  
OUR NEW LOCATION  
for



BENDIX - WESTINGHOUSE

Hermetic Compressors  
Condensing Units and Parts  
Air Conditioning and Heating  
and  
Refrigeration and Supply Jobbers

WHOLESALE ONLY

**Cobe and Foster, Inc.**  
66 Willow St. Dial 2-9642  
Manchester, N. H.  
Registered Professional Engineers

**P  
L  
E  
X  
T  
O  
N  
E<sup>®</sup>**

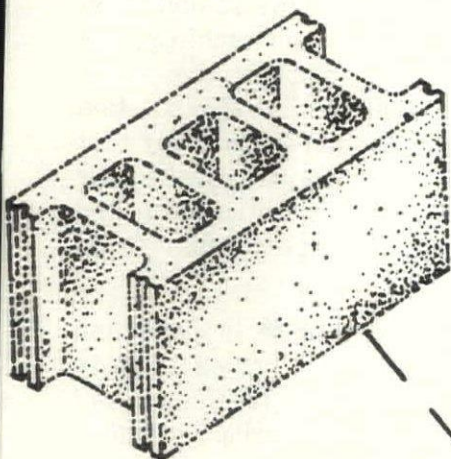


DISTRIBUTED BY



Office and Warehouse  
Manchester, N. H.

55 Nelson St.  
Tel. NA 2-5262



**DURACRETE**

## *The President's Message*

It's wise when you're thinking of building or remodeling, to call in an architect at the earliest planning stage."

In every clime, at all times, the innermost heart of man and maid cries out for a home — "the place where we rest."

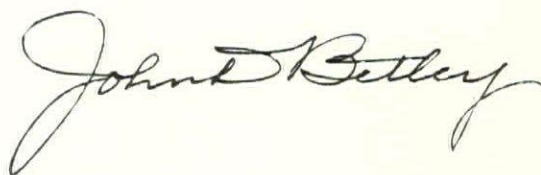
To most of us at some period in our lives comes the opportunity for planning a Home — the beloved and sacred spot which will be our shelter — and another's — from the cares of the outside world, where we can gain strength and purpose to carry us through our tomorrows.

None of Life's pleasures will bring us purer, simpler joy than this, the task of planning surroundings that will be at once beautiful, simple and convenient; beautiful with grace of style and attractiveness of material; simple with lines that rest and charm the eye; convenient in that they are designed to save effort, strength and labor, by conforming to an ideal of true efficiency.

The first question to be decided is the style of home we prefer. Then the amount we can profitably spend thereon must be definitely fixed. Do we prefer a neat, compact two-story house, or a one-story residence in more rambling style? Does the Dutch type, with mansard roof, appeal to us, or the pure Colonial, with its tall white pillars? Do we prefer a quaint California bungalow, or a villa in composite modern design? The decision is an important one, and the question of suitability to our chosen building site must not be forgotten.

The general plan of our future home once settled, the stability and worth of the framework insured by choice of a competent architect, the construction vouched for by a reliable contractor, and ourselves fully assured of getting just what we specify from a dealer of good reputation whom we know we can trust, most of us will happen on the discovery that successful home building is one of life's most delightful experiences, the enjoyment of which totally obscures the cost, both in anticipation and recollection; but — the default of a few simple precautions may bring lasting disappointment, loss and regret.

Safety in building — the fulfillment of every promise in plans and specifications — is assured by association with concerns of proved integrity and responsibility, and therefore, "it's wise when you're thinking of building or remodeling, to call in an architect at the earliest planning stage."







## OFFICERS

*President*

JOHN D. BETLEY, Manchester

*Vice-President*

NICHOLAS ISAAK, Manchester

*Secretary*

JOSEPH F. LAMPRON, Manchester

*Treasurer*

ROBERT SNODGRASS, Nashua

## DIRECTORS

MITCHELL P. DIRSA, Manchester

JOHN R. HOLBROOK, Keene

MALCOLM D. HILDRETH, Nashua

## EDITOR

ALEXANDER MAJESKI, R. A.

Palomino Lane  
Manchester, N. H.

## PUBLISHER

LAWRENCE J. MOYNIHAN

P. O. Box 291  
Concord, N. H.

New Hampshire Architect is published monthly at 181 North Main Street, Concord, N. H., under the direction of the president and board of directors of the New Hampshire Chapter, American Institute of Architects, to promote the objectives and public relations of the chapter. Advertising rates furnished upon request.

# New Hampshire ARCHITECT

VOL. 8

JULY, 1957

NO. 12

## TABLE OF CONTENTS

President's Message .....	6
F. H. A. Reviewing Building Regulations .....	9-36
Read It and Weep or Laugh .....	10
N. H. Chapter Meeting .....	10-14
Home Builders Enjoy Beach Outing .....	10
Scaffolding Plant Destroyed by Fire .....	10
A. G. C. Observes Ladies' Day .....	11
N. H. Awards Show Increase .....	11
Projects by Tracy and Hildreth .....	15-32
Project by Koehler and Isaak .....	33-35

## COVER PICTURE

Peerless Insurance Company's New Building at Keene.

## STEWART A. LYFORD

931 Stewart A. Lyford, 54, a member of the firm of Lyford and Magenau, died July 11 after a long illness. Mr. Lyford who was a native of Concord was a member of the New Hampshire Chapter of the American Institute of Architects.

He held membership in Alpha Lodge of Perfection, Ariel Council Princess of Jerusalem Acacia Chapter of Rose Croix of Concord, N. H. Consistory, Bektash Shrine, and Blazing Star lodge, F. and A. M. He was a 32nd degree Mason.

He also held membership in the N. H. Yale Alumni association and the University of New Hampshire alumni association. He belonged to the Sons of the American Revolution and St. Paul's Episcopal church and served as clerk of the parish for more than 15 years. He attended Concord High school, University of New Hampshire, and was a graduate of Yale university.

Survivors include his wife, Mrs. Charlene Pettengill Lyford, a daughter, Miss Cynthia Lyford, two sisters, Miss Dorothea Lyford and Mrs. Ruth L. Mansell of Stoddard; six nieces and four nephews and grand nieces and nephews.

# A ROOF BY THERRIEN IS A GOOD ROOF

TEL. 3-6193

199 HAYWARD STREET

MANCHESTER, N. H.



# FHA REVISING ITS BASIC BUILDING REGULATIONS

Simplified Rules Will Help Reduce Cost, Allow Builders Greater Flexibility

Working for the last 25 months with the aid of an advisory group of the nation's top architects and builders, the Federal Housing Administration has drafted a completely new set of construction standards, or so-called "Minimum Property Standards," for houses to be financed with FHA-insured mortgages, reports (the May) HOUSE & HOME, the professional magazine of the home building industry.

A lot of these impending new FHA standards will reduce construction costs, but some will also increase builder's expenses. Mainly, however, says the magazine, the new standards will give home builders much greater flexibility and "will be the most progressive document issued by FHA since the 1930's."

At present the proposed new rules are being circulated among building material manufacturers and other industry groups, so any "bugs" can be eliminated before they are formally issued.

The current HOUSE & HOME publishes a summary of the main changes of interest to builders. In an editorial, "Let's All Cheer for the New FHA Standards," it also strongly urges the entire industry to back up adoption of the simplified, practical, more economical new rules, and avoid the mistakes of opposing any of the changes that might increase some costs but insure the production of much sounder, better and easier-to-maintain houses for the public. Says this editorial:

"For years architects, builders and lenders have been urging FHA to modernize and streamline its 20-year-old minimum property requirements . . . have moaned and groaned against unreasonable and arbitrary local interpretations placed upon the 28 often-conflicting regional versions of the MPRs.

"Now FHA is doing something about the MPRs . . . . In a most constructive and intelligent way to help our industry, Commissioner Norman Mason and Chief Architect Neil A. Connor, of Boston, have named an industry advisory committee of

practical experts to help them update the FHA bible.

"This group has decided the old MPRs are not worth rewriting, so it has proposed junking the whole package. To take their place it has written a completely new set of FHA standards — clearer, simpler and fuller, combining the best of the old MPRs with the results of the best new research. It has written these standards as all codes should be written — as performance standards . . . .

## Warning Against Short-Sighted Savings

"Some of these new standards will help our industry save millions of dollars worth of waste required by the old MPRs. (For example, the new standards permit 24-inch stud spacing and eliminate the second stud on either side of the window.)

"We can be very sure all these dollar-saving changes will be welcomed by builders. But some of the new standards are higher and cost more money. We devoutly hope the builders will not team up to attack these better standards.

"We devoutly hope the builders will not champion the uninformed home buyer's divine right to buy an inadequately insulated house that will cost too much to heat in winter and too much to cool in summer. We hope the builders will not insist on the buyer's unalienable right to take a hot-water heater too small to do its job, or cheaper hot-water heater that will have to be replaced — at twice the initial cost — within two years.

"The automotive industry learned 30 years ago that it could not build a new car cheap enough to compete in price with the values offered in the used car market. So the automobile industry went after, and opened up, a new mass-market for better cars that is both richer and bigger than the cheap car market the auto industry abandoned in 1927. The auto industry is selling far more new cars today at far higher prices by putting new values into new cars that are impossible to find even in two-year-old models.

(Continued on Page 36)



## READ IT AND WEEP OR LAUGH

By JOHN KEATS

This is an angry, brilliantly funny but deadly serious report about the housing developments that are blighting the landscape and souls of America's suburbs. The misfortunes of John and Mary Drone, who "bought" a nothing-down, life-time-to-pay box on a slab in Rolling Knolls, are simply extensions of the problems that beset nearly everyone who exists on the fringes of a city. Even if the nearest development seems safely zoned from your front door, you will find the Drones and their neighbors disturbingly like your own.

The new suburban slums, by concentrating young couples of similar background, income bracket, and outlook in rows of inadequate houses, have made a stultifying unnatural community. The frustrated residents, anchored to their tiny yards by their colossal mortgages, seek desperately for some form of self-expression.

They try to amuse themselves with the wonderful gadgets of our civilization, but the easy credit is hard to pay and their debt becomes ever more burdensome. Surrounded by friendly neighbors but no true friends, they attempt anything from handicrafts to neighborhood sex to relieve their boredom. But the only way out is to move out and that's economically impossible.

Who is responsible for this situation? The builders, whose most useful tool is the chisel? The bankers, who are getting the frosting from this miracle-mix cake? The federal government, who by guaranteeing veterans' mortgages has put a solid base under the whole shaky construction? The local communities, whose lack of zoning laws has permitted these excrescences? The suckers who have bought the houses?

Keats discusses every aspect of life in a development. His account is supported by solid facts and figures but it is presented in personal terms to show you an existence that combines all of the worst aspects and none of the advantages of suburban living.

## N. H. CHAPTER A. I. A. MEETING TO BE HELD AUGUST 21

President John D. Betley has announced that the Ladies Day meeting of N. H. Chapter has been scheduled for Wednesday, August 21, at the Farragut Hotel Rye Beach. Details of the coming meeting will be announced at a later date.

Horace G. Bradt of Exeter has been appointed to head a committee to arrange for the meeting.

## HOME BUILDERS ASSOCIATION OF NEW HAMPSHIRE ENJOYS HAMPTON BEACH OUTING

Members of the Home Builders Association of N. H., and guests enjoyed the third annual outing of the association at the Hotel Ashworth at Hampton Beach on Saturday, June 22. Approximately 70 persons were in attendance.

The all-day outing was highlighted by a clambake at noon and a steak supper. The members and guests were entertained in the hospitality room of the hotel, followed by dancing.

Francis Driscoll of the Corriveau Routhier Company, secretary, was in charge of arrangements.

## SCAFFOLDING SPECIALTY PLANT DESTROYED BY FIRE

C. C. Pimm, president of the Scaffolding Specialty Company of West Somerville, Mass., reports that the company's plant was completely destroyed by fire early in the morning of June 13.

Mr. Pimm stated that all stock was destroyed and that all machinery that was not destroyed will require five to six weeks to recondition.

Under the circumstances, the company president said, it will be at least two months before any quantity of scaffolding can be furnished, although orders are being accepted for future delivery.



## Associated General Contractors Observe Ladies' Day

The Sixth Annual Ladies Day of the Associated General Contractors of New Hampshire and Vermont was held at Mountain View House, Whitefield, New Hampshire, June 22.

Some of the activities Saturday included a golf tournament, putting contest, horse-shoe pitching, shuffle board, swimming, etc. A social hour at 6:00 P. M., was followed by a banquet, entertainment and dancing.

Over 110 Members of A. G. C. and their guests were present, making this the best-attended Ladies Day since its inception in 1951. Among the distinguished guests were Charles Whittier, Councilor from District #1, representing Governor Dwinell; H. E. Sargent, Chief Engineer, Vermont Highway Department; John O. Morton, Commissioner, New Hampshire Public Works & Highways Department; and John D. Betley, President, New Hampshire Chapter A. I. A.

### N. H. AWARDS SHOW INCREASE OF FIFTY-THREE PERCENT

BOSTON—Contracts for future construction in New Hampshire in May totaled \$12,793,000, an increase of 53 percent compared to May 1956, James A. Harding, F. W. Dodge Corporation, district manager, reported.

May contracts by the major construction categories compared to the similar month of a year ago showed: non-residential at \$4,545,000, up 41 percent; residential at \$4,558,000, up 12 percent; and heavy engineering at \$3,690,000, up substantially.

The first five month total of construction contracts compared to the like 1956 period showed: non-residential at \$11,740,000, down 18 percent; residential at \$13,923,000, up 27 percent; heavy engineering at \$8,420,000, down four percent; and total construction at \$34,083,000, down less than one percent.

## Alkyd Flat Enamel

For walls and woodwork

**Martin-Senour  
QUIK-FLAT  
Enamel**



Here's big news—an alkyd flat enamel, developed exclusively by Martin-Senour, that is fast drying, gives one-coat coverage, is guaranteed washable and glides on smooth as velvet with brush, spray or roller. Quik-Flat Enamel is available in *any color you want*. Simply tint with Martin-Senour Nu-Hue Liquid Tinting Colors—work right from the Martin-Senour Color Coordinator.

### SEAMANS SUPPLY COMPANY

Distributors

Manchester, New Hampshire

## Colonial Supply Corp.

25 Union Street

MANCHESTER, N. H.

Plumbing - Heating - Mill Supplies

BORG WARNER'S HYDRALINE

Central

System Air Conditioning

HEATING — in Winter

COOLING — in Summer

Today's Trend In Building

WE INVITE YOU TO VISIT THE  
LARGEST SHOWROOM IN NEW ENGLAND

WHOLESALE ONLY



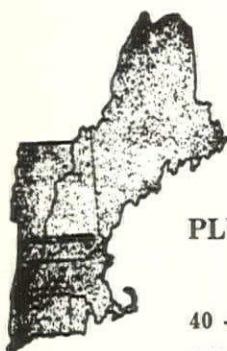
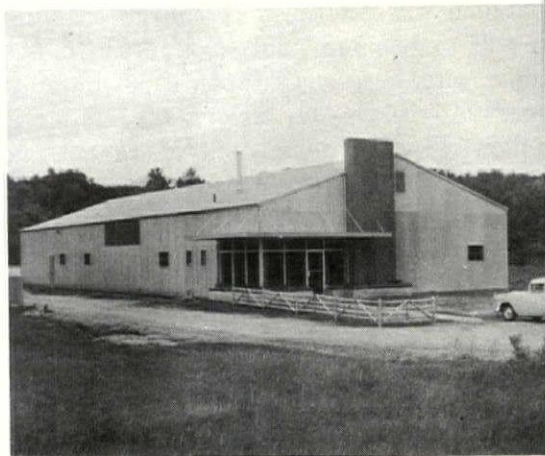
## Standard Fence Company Selects Stran-Steel

A fast growing concern has recently completed its new building with office, display room and warehouse, located at 2510 Candia Road, Manchester.

Standard Fence Company, under the ownership and management of Bob Kurlansky, has gone all out to provide everything in fencing requirements, whether for the home owner, builder, contractor or industry.

Offering a wide variety of fencing from Realock chain link fence for protection and security, to Walpole Rustic Cedar fencing for privacy, beauty, play and boundary areas. Included in the Walpole line is famous Rustic Cedar furniture, and prefab tool houses, cottages, etc.

Standard Fence Company offers displayed fencing at the new location, has experienced personnel for construction and erection, and extends a cordial invitation to architects and contractors to contact them on any fencing problem.



## NEW HAMPSHIRE *Supply Company*

• WHOLESALE DISTRIBUTORS •

PLUMBING & HEATING SUPPLIES — INDUSTRIAL SUPPLIES  
POWER TOOLS

40 - 48 Commercial St.  
149 Pleasant St.

Manchester, N. H.  
Claremont, N. H.

Tel. National 3-8084  
Tel. 2030

PASSENGER & FREIGHT ELEVATORS

ROTARY OILDRAULIC & ELECTRIC

RESIDENCE ELEVATORS & STAIRCARS

INDUSTRIAL - HYDRAULICS

**Sales - Service - Repair**

444 S. Main

Nashua

Tuxedo 2-9591







The new facilities are housed in a modern Stran-Steel building, selected for its low-cost and adaptability. Morrison Booth of Manchester and Laconia handled the sale and detail for Corriveau-Routhier Company of Manchester, area distributors for Stran-Steel.

## "WANNA ROOF?"

For the first time TV is now giving away roofs for free. Result: Postal clerks in East Walpole, Mass., headquarters of Bird & Son, which makes roof products, are jet-like busy and blaming Garry Moore.

On his Channel 2 show at 10:00 A. M., Garry announced that he'd give away ten roofs and have them installed. "Need a new roof?", Garry asked. "No box tops, no rhymes. Just send your name and address and I'll pick ten winners."

Bird & Son expected a handful of "May I have a roof, please?" requests. The first day's mail contained 25,000 cards. Now the we-want-a-free-roof-contingent numbers more than 100,000 and the incoming mail is still piling up. All because Garry asked "Wanna roof?"

One wonders if Garry's next giveaway will be Yankee Stadium — WITH an overhanging roof.

*"tailor-made"* **FIDELITY, SURETY**

and **BURGLARY**

coverages demand a

# SPECIALIST

**PEERLESS**

*Insurance Company*

INCORPORATED IN NEW ENGLAND

KEENE, NEW HAMPSHIRE  
A MULTIPLE LINE COMPANY

*also writing:* Reinsurances •

Fire and Inland Marine •

Casualty and Liability Lines •

Accident and Health • Specialized

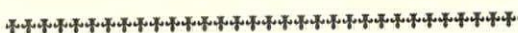
Lines and Excess Covers

## HOW TO INVITE A HEART ATTACK

Frank J. Curtis, Vice President of Monsanto Chemical Company, knows how dangerous it is for men to work as hard as they do in the operation of their business.

By way of urging executives to be sensible and take care of their health he has advised the following ten rules which he says are an invitation for a heart attack:

1. Your job comes first; personal considerations are secondary.
2. Go to the office evenings, Saturdays, Sundays, holidays.
3. Take the briefcase home on evenings you don't go to the office. This way you can review completely all troubles and worries of the day.
4. Never say no to a request, always say yes.
5. Accept all invitations to meetings, banquets, committees, etc.
6. Don't eat a restful relaxing meal—always plan a conference for the meal hour.
7. Regard fishing, hunting, golf, bowling, billiards, cards, gardening, as a waste of time or money.
8. Believe it's poor policy to take all the vacation allowed you.
9. Never delegate responsibility to others, carry the entire load yourself at all times.
10. If your work calls for traveling, work all day and drive all night to keep the next morning's appointment.



# Reserve . . .

## WEDNESDAY, AUGUST 21

for

## Ladies' Day Meeting



Full Details in the

## August Issue



**REALOCK Fence** Chain Link for Protection, Security and Performance. Use it for Industry, Storage Areas, Homes, Tennis Courts, Kennels, Swimming Pools, Parks, Playgrounds and a Thousand Other Uses.

**WALPOLE Rustic Cedar Fencing** Screen, Hurdle, Picket, Post and Rail Styles—To afford privacy, play areas, boundary lines, offering color and charm to your landscape.

WALPOLE RUSTIC  
CEDAR FURNITURE  
DISTRIBUTORS



QUALITY  
SERVICE  
INSTALLATION



**PEERLESS INSURANCE COMPANY'S  
BUILDING**

Keene, New Hampshire

**NEW LIBRARY**

University of New Hampshire

**SCOTT-FARRAR HOME**

eterborough, New Hampshire

**MARSTON ELEMENTARY SCHOOL**

Hampton, New Hampshire

*Designed by*

**TRACY and HILDRETH  
ARCHITECTS**

Nashua, New Hampshire

STEPHEN P. TRACY, A.I.A.

MALCOLM D. HILDRETH, A.I.A.

**The MacMillin Company, Inc. - Keene, New Hampshire**  
**General Contractor**

**PEERLESS INSURANCE COMPANY**  
**KEENE**

**CONSTRUCTION:**

Foundations: Concrete.

Exterior Walls: Brick with light weight masonry block backers except aluminum and steel curtain walls on second floor.

Frame: Structural steel.

Roof: Steel decking, rigid insulation, built-up roofing.

Floors: Concrete, asphalt tile, except ceramic tile in toilets and kitchen.

Ceilings: Suspended acoustical tile.

Windows: Aluminum.

Dadoes: Glazed facing tile in toilets and kitchen; hardwood veneers in Directors' Room and Lobby.

Partitions: Lightweight masonry block and movable office partitions.

Electrical: Fluorescent troffers in most areas.

Heating: Forced hot water boiler; roof units with ducts and ceiling diffusers for distribution.

Air Conditioning: Chilled water circulated through same roof units used for heating.

**PEERLESS INSURANCE COMPANY**  
**KEENE**

**Sub-Contractors and Material Suppliers**

Heating, Ventilating and Air Conditioning—Mitchell & Hicks Co., Concord.

Plumbing—R. L. Galloway, Walpole.

Electrical—Philip D. Moran, Keene.

Roofing and Sheet Metal Work—Al Melanson Co., Inc., Keene.

Structural Steel and Misc. Iron—Lyons Iron Works, Inc., Manchester.

Bricks—Densmore Brick Company, Lebanon.

Granite—John Swenson Granite Co, Concord.

Cast Stone—Architectural Stone Co., Turner Falls, Mass.

Finish Hardware—Knowlton & Stone Co. Keene.

Millwork—John F. Chick & Son, Silver Lake.

Slate—Vermont Structural Slate Co, Fair Haven, Vt.

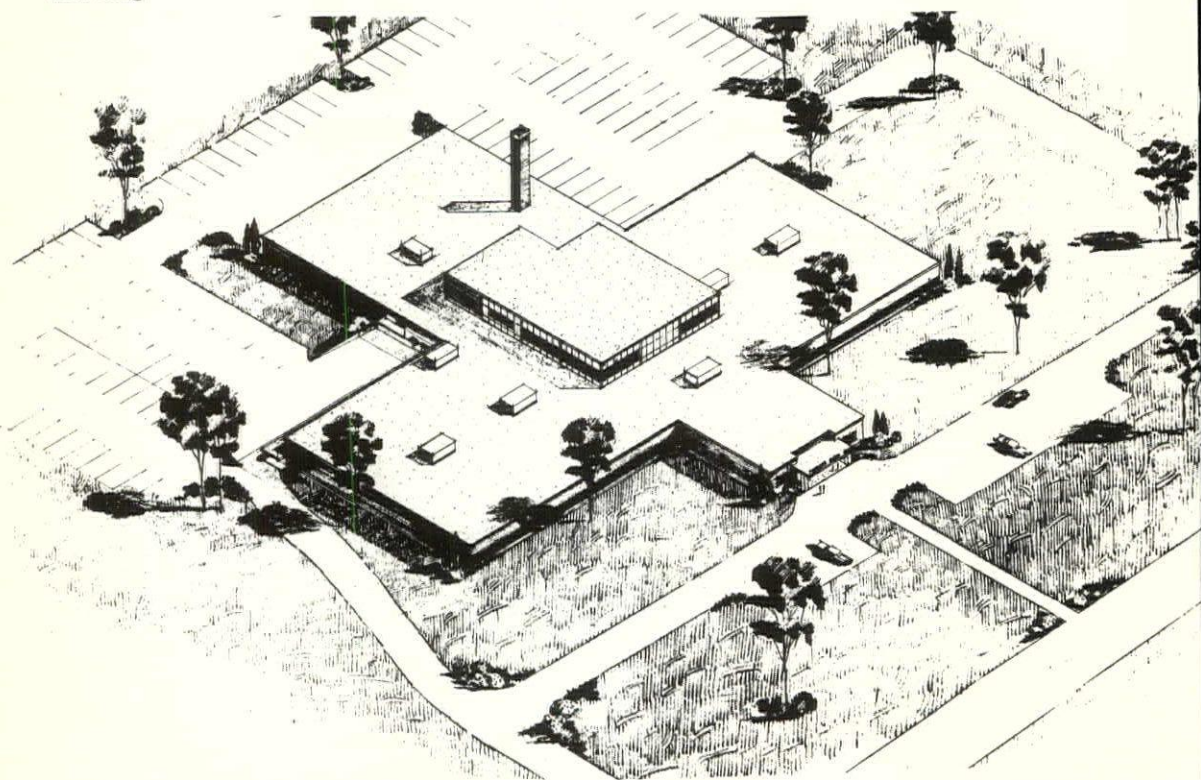
Holorib Reinforcing Floor Forms, Fenestr Roof Panel, Sannymetal Toilet Partitions, Wilson Rolling Steel Closures—Maurice Laframboise Manchester

Resilient Tile—Barrett Flooring Co., Bedford Mass.

Reinforcing Steel, Wire Mesh, Curtain Wall Construction—Fabricated Steel Products Co Wollaston, Mass.

Overhead Doors—F. A. Ballou Co., Manchester

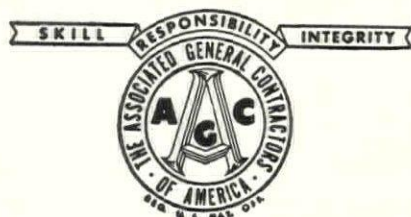
Lelite Blocks and Transit Mix Concrete—Arthur Whitcomb, Inc., Keene.





# The MacMILLIN COMPANY, Inc.

## *Builders*



KEENE, N. H.

ELmwood 2-3070

## *Another Repeat Customer*

**BUILDERS IN 1950**

**Office Building For Peerless  
Casualty Company, National Grange Mutual  
Liability Company, National Grange Fire  
Insurance Company**

*Builders in 1957*

**New Office Building For  
PEERLESS INSURANCE COMPANY  
Keene, N. H.**

**R. L. GALLOWAY**

**Walpole, N. H.**

SKyline 6-3783

Plumbing - Heating - Ventilating

PLUMBING CONTRACTOR

for

PEERLESS INSURANCE COMPANY

BUILDING

Keene, N. H.

**AL MELANSON**

**Company, Inc.**

**Roofing Contractors**

for

**Peerless Insurance Co.**

Keene, N. H.

**Scott-Farrar Home**

Peterborough, N. H.

**Roofing**

SHEET METAL - WATER PROOFING

CONTRACTORS

353 WEST ST.

KEENE, N. H.

22 E. Broadway, Gardner, Mass.

**MILLWORK**

For

**PEERLESS INSURANCE**

**COMPANY'S**

**New Building**

at

KEENE, N. H.

— Furnished by —

**JOHN F. CHICK**

**& SON, INC.**

SILVER LAKE, N. H.

Tel FOrrest 7-4611

**Fabricated Steel**

**Products Co., Inc.**

Agents for

Ceco Steel Products Corporation

---

STEEL JOISTS - ROOF DECK

STEEL SASH - ALUMINUM SASH

REINFORCING MESH

DUR-O-WAL

---

Warehouse and Office

115 Old Colony Avenue

Wollaston 70, Mass.

Mayflower 9-5218



INDUSTRIAL  
COMMERCIAL  
RESIDENTIAL  
PLANNING  
BLUEPRINTING

## Electrical Contractor

— for —

### Peerless Insurance Co.

Keene, N. H.

### PHILIP D. MORAN

Keene, N. H.

103 Winchester St.

Tel. EL 2-2215

HEATING  
VENTILATING  
MACHINE ERECTING  
MILLWRIGHT WORK

## MITCHELL & HICKS Co., Inc.

New Hampshire's Leading Plumbing  
and Heating Contractors

INDUSTRIAL      RESIDENTIAL

74 South State St.      Concord, N. H.

Phone CA 4-0947



HEATING - VENTILATING  
and  
AIR CONDITIONING  
at

### Peerless Insurance Co.

Keene, N. H.



*"Steel When You Want It"*

## LYONS IRON WORKS, Inc.

STEEL STRUCTURES DESIGNED AND FABRICATED

ARCHITECTURAL AND ORNAMENTAL IRON

*Office and Works*

MANCHESTER      NEW HAMPSHIRE

It was our privilege to furnish the STEEL  
for the Construction of the following

Peerless Insurance Company Building

Keene

Scott-Farrar Home

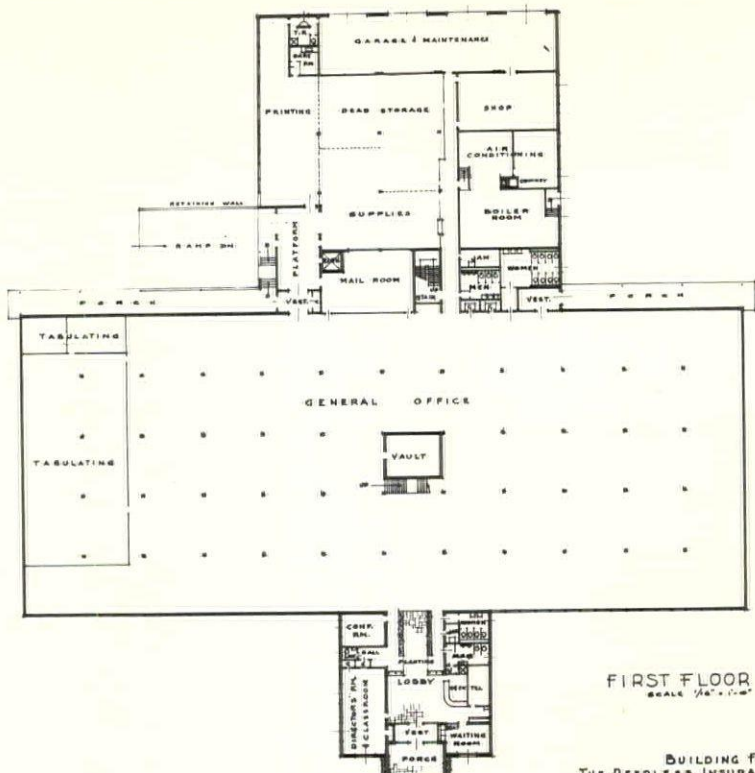
Peterborough

New Library (U. of N. H.)

Durham

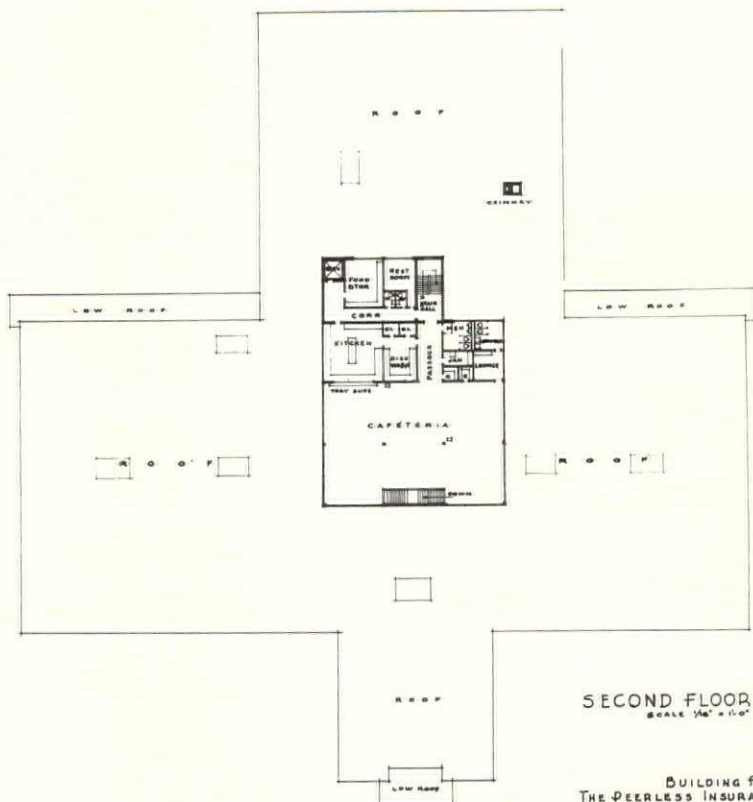
Marston Elementary School

Hampton



FIRST FLOOR PLAN  
SCALE 1/8" = 1'-0"

BUILDING FOR  
THE PEERLESS INSURANCE COMPANY  
KEENE, NEW HAMPSHIRE  
Tracy & Hildreth-Architects, Nashua, N. H.



SECOND FLOOR PLAN  
SCALE 1/8" = 1'-0"

BUILDING FOR  
THE PEERLESS INSURANCE COMPANY  
KEENE, NEW HAMPSHIRE  
Tracy & Hildreth-Architects, Nashua, N. H.



Supplied at the New Home of  
**PEERLESS INSURANCE COMPANY**  
 Keene, New Hampshire

*Fenestra*

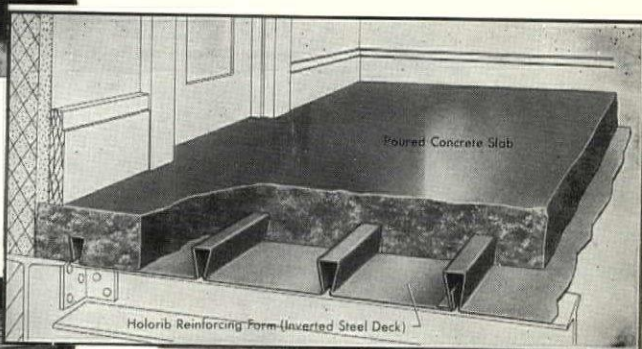
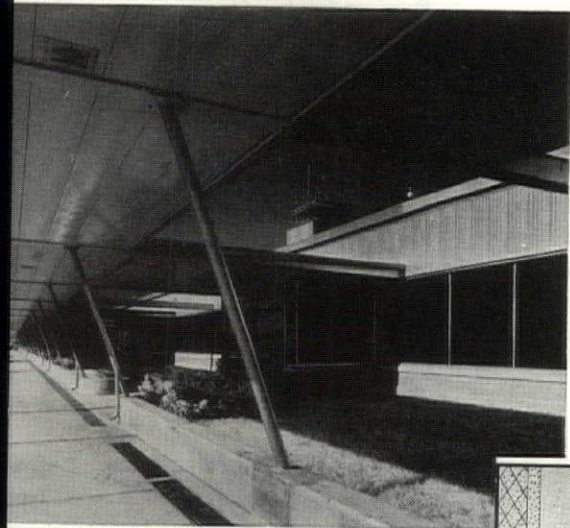
TYPE "D" ROOF PANEL

*Sanymetal*

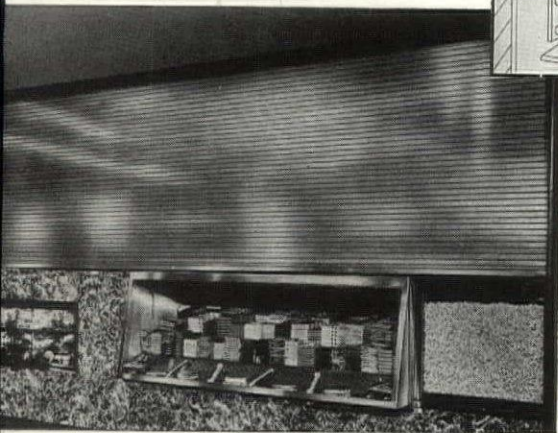
**ACADEMY**



Overhead braced, it can be installed easily in buildings new or old.



**HOLORIB REINFORCING FLOOR FORMS**



**Wilson midget slat  
 rolling steel closures**

By  
**MAURICE LAFRAMBOISE**

Manufacturers Agent

TEL. NA 3-6943

MANCHESTER, N. H.

*Eastern*

OVERHEAD TYPE GARAGE DOORS  
for

THE PEERLESS INSURANCE  
BUILDING  
Keene, N. H.

will be  
Furnished and Installed  
by

94B20

**F. A. BALLOU CO.**

449 Hayward St. Manchester, N. H.

Tel. NA 4-1301

FRANK BALLOU - Sales Dept.

**ARCHITECTURAL STONE**

**COMPANY**

INCORPORATED

MANUFACTURERS OF

**CAST STONE**

TURNERS FALLS

MASSACHUSETTS

**BARRETT FLOORING COMPANY**

Quality Floors Since 1932

P. O. BOX 246

BEDFORD  
MASSACHUSETTS

40 MECHANIC ST. KEENE  
NEW HAMPSHIRE  
SUPPLIERS AND INSTALLERS



We Are Doing The  
RESILIENT TILE FLOORS  
at

**Peerless Insurance Co.**

Keene, N. H.

**KNOWLTON**

and

**STONE COMPANY, Inc.**

"SINCE 1866"

Eagle Ct. Keene, N. H.

HARDWARE — MILL SUPPLIES

Building Materials — Paints

THE NEW HOME OFFICE  
of

**Peerless Insurance Co.**

IS BEING FURNISHED  
with

**P & F Corbin Hardware**

Supplied By  
KNOWLTON and STONE



## Harvey Construction Co.

### General Contractor

#### LIBRARY

#### UNIVERSITY OF NEW HAMPSHIRE

#### CONSTRUCTION:

Foundations: Concrete.

Exterior Walls: Brick with light-weight masonry block backers; granite trim.

Structure: Steel frame with reinforced concrete floor and roof slabs.

Roofing: Built-up roofing over rigid insulation; Copper flashings.

Partitions: Masonry block or movable steel.

Floorings: Ceramic tile in toilets; Cork in Lobby; asphalt tile elsewhere.

Ceilings: Acoustical, suspended.

Dadoes: Glazed facing tile in toilets; wood veneers in Lobby.

Windows: Wood Casement.

Electrical: Flurescent fixtures generally throughout; intercommunicating telephone system; signal and fire alarm systems.

Elevators: Hydraulic elevator; electric book lift.

Heating: Hot water converters, warm air and return ducts located in columns. One air unit on lowest floor and one air unit on top floor.

Ventilating: Mechanical ventilation for toilets and inside rooms.

#### LIBRARY

#### UNIVERSITY OF NEW HAMPSHIRE

#### Sub-Contractors and Material Suppliers

Plumbing, Heating and Ventilating—R. C. Peabody & Co., Inc., Manchester.

Electrical—M. B. Foster Electric Co., Portsmouth.

Plastering—P. H. McGranahan Co., Inc., Manchester.

Painting—Albert D. Howlett Co., Boston, Mass.

Steel Erection—J. Scanlon Co., Inc., Manchester.

Waterproofing—Western Waterproofing Co., Boston, Mass.

Structural Steel—Lyons Iron Works, Inc., Manchester.

Granite—John Swenson Granite Co., Concord.

Hollow Metal Door Frames—Maurice Laframboise, Manchester.

Movable Partitions—Pitcher & Co., Inc., Cambridge, Mass.

Folding Partitions — Walsh-Chapin-Gladwin, Inc., Boston, Mass.

Elevator—Stanley Elevator Company, Nashua.

Cast Stone—Cambridge Cement Stone Co., Allston, Mass.

*We are pleased to be furnishing the*

## GRANITE

for

### THE NEW LIBRARY BUILDING

University of New Hampshire, Durham

and

### PEERLESS INSURANCE BUILDING

Keene

### From Our Quarry and Plant

At Concord

---

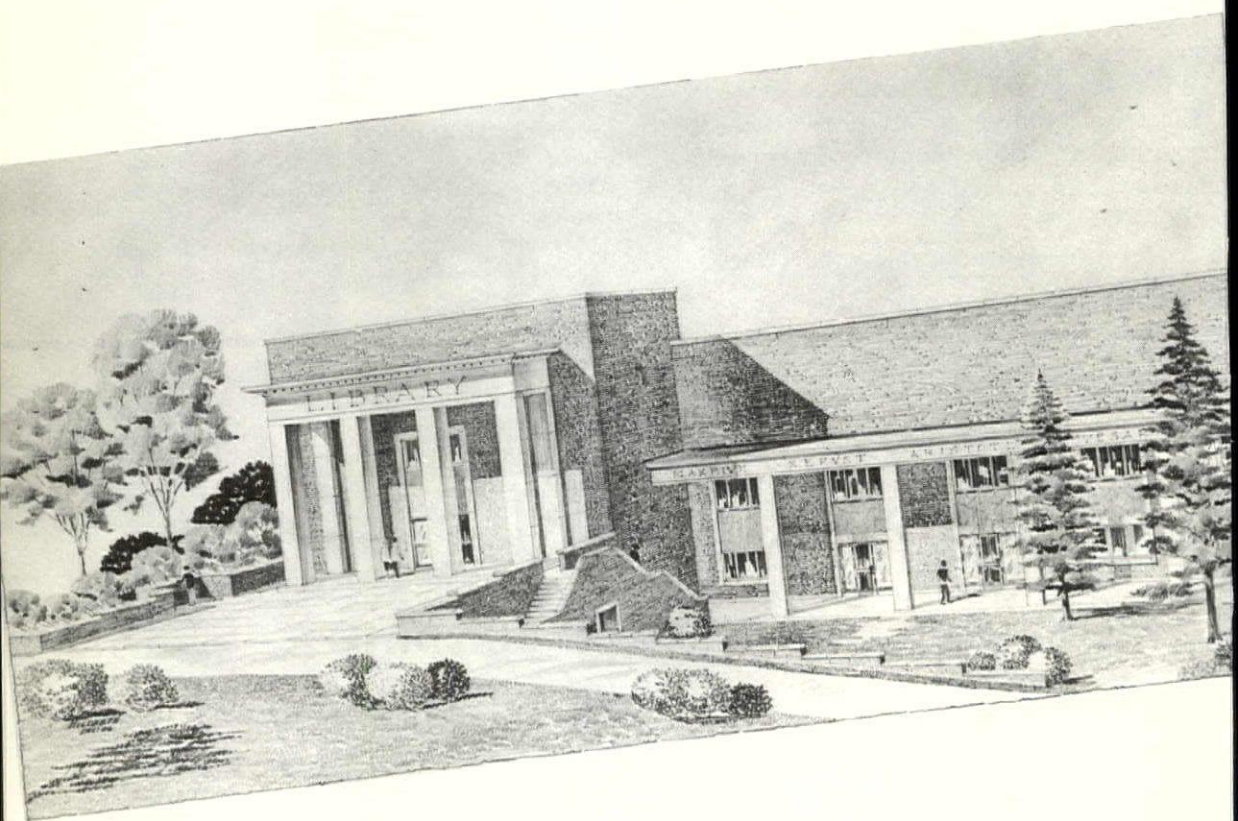
## THE JOHN SWENSON GRANITE CO., Inc.

SWENSON GRAY GRANITE SWENSON PINK

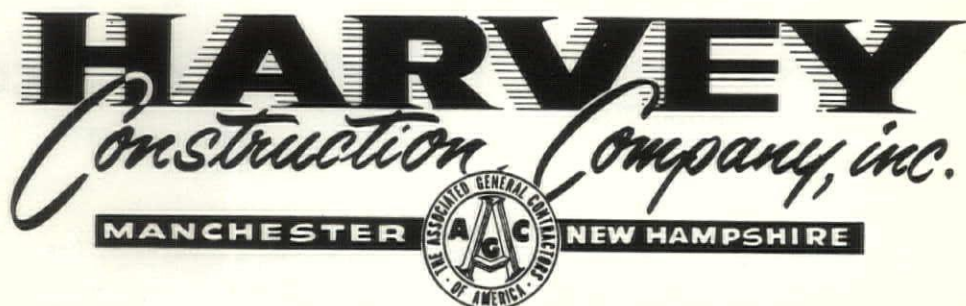
CONCORD, N. H.

## NEW LIBRARY

University of New Hampshire  
Durham, N. H.







**1662 Elm Street**

**Tel. NA 2-3745**

We are Deeply Honored to Have entrusted to us the Construction  
of these Fine Buildings at the  
UNIVERSITY OF NEW HAMPSHIRE  
Durham, N. H.

**THE NEW LIBRARY**  
**THE WOMEN'S DORMITORY**

**CAMBRIDGE CEMENT  
STONE COMPANY**  
INCORPORATED

**CAST STONE**

For The  
**NEW LIBRARY**  
and  
**NEW WOMEN'S DORMITORY**  
University of New Hampshire  
Durham, N. H.

156 Lincoln St.

Allston 34, Mass.

Tel. STadium 2-7610 - 2-7611

**WALSH-CHAPIN-GLADWIN, INC.**

755 BOYLSTON STREET  
BOSTON 16, MASS.

**Incinerators**

**Folding Doors**

**Window Screens**

**Access Panels**

**Venetian Blinds**

**Light Proof Shades**

**STEEL**  
FOR THE  
**New Library**  
and  
**Women's Dormitory**  
Durham, N. H.  
**ERECTED**

— by —

**J. SCANLON & CO.,**  
Incorporated

61 Amherst Street  
Manchester, N. H.  
Phone NA 2-3324

**W**ESTERN  
ATERPROOFING CO., INC.  
82 West Dedham St.  
Boston 18, Mass.  
Commonwealth 6-4100

- WATERPROOFING
- DAMPPROOFING
- CAULKING

at

NEW LIBRARY BUILDING  
NEW WOMEN'S DORMITORY  
University of New Hampshire  
Durham, N. H.



## **R. C. Peabody Co., Inc.**

Plumbing • Heating • Sprinkler

### **Contractors**

Sales - Installation - Service

720 Union St.

Dial 2-0824

## **Plumbing - Heating**

and

## **Air Conditioning**

### **New Library**

University of New Hampshire

Durham, N. H.

## **M. B. Foster Electric Co.**

Telephone GENEVA 6-5606 - 07

69 Albany Street

PORTSMOUTH, N. H.



## **Electrical Contractor**

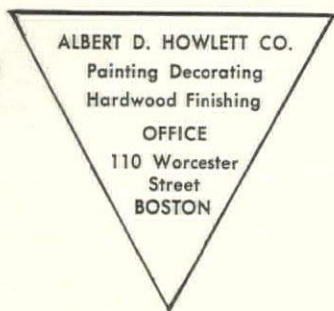
for

### **New Library**

University of New Hampshire

Durham, N. H.

Known for  
Quality  
Since 1902



COmmonwealth 6-1512

## **Celotex Acoustical Products**

### **Office Partitions**

### **Insulrock Roof Deck**

by

## **Pitcher & Company, Inc.**

67 Rogers St., Cambridge, Mass.

Goffstown, N. H. HYacinth 7-2376

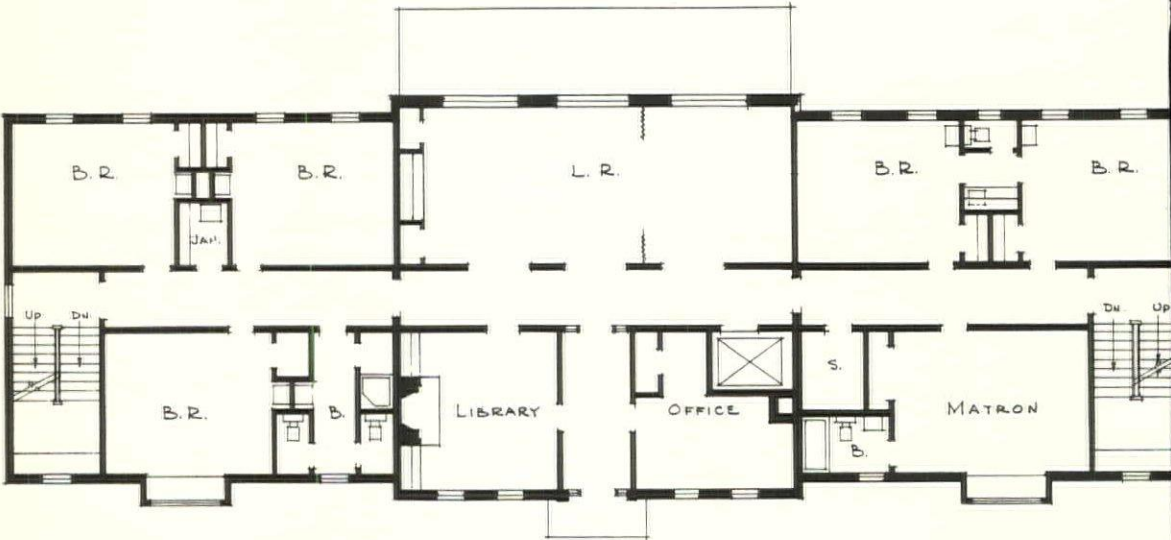
## **Painting & Decorating New Library**

UNIVERSITY  
of N. H.  
DURHAM

MEMBER:

Painting and Decorating  
Contractors of America

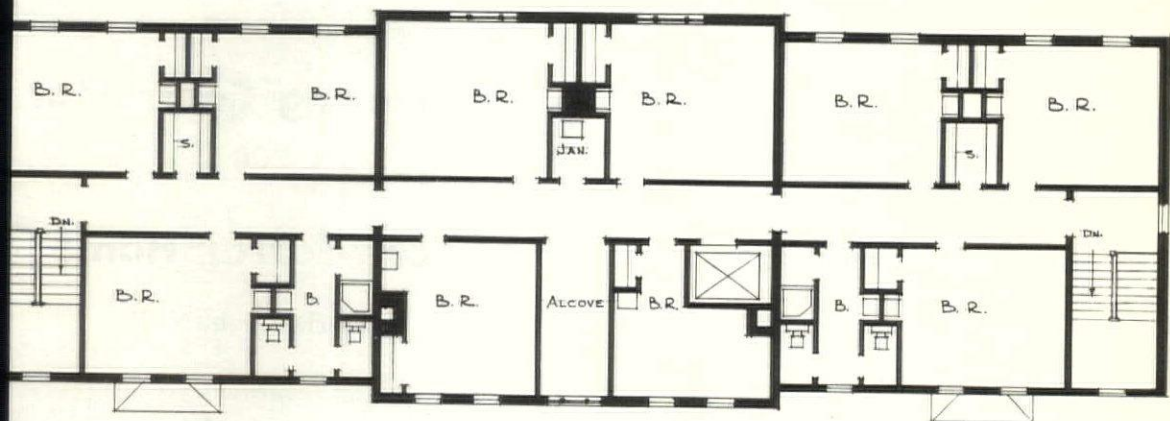
SCOTT - FARRAR HOME  
Peterborough, N. H.



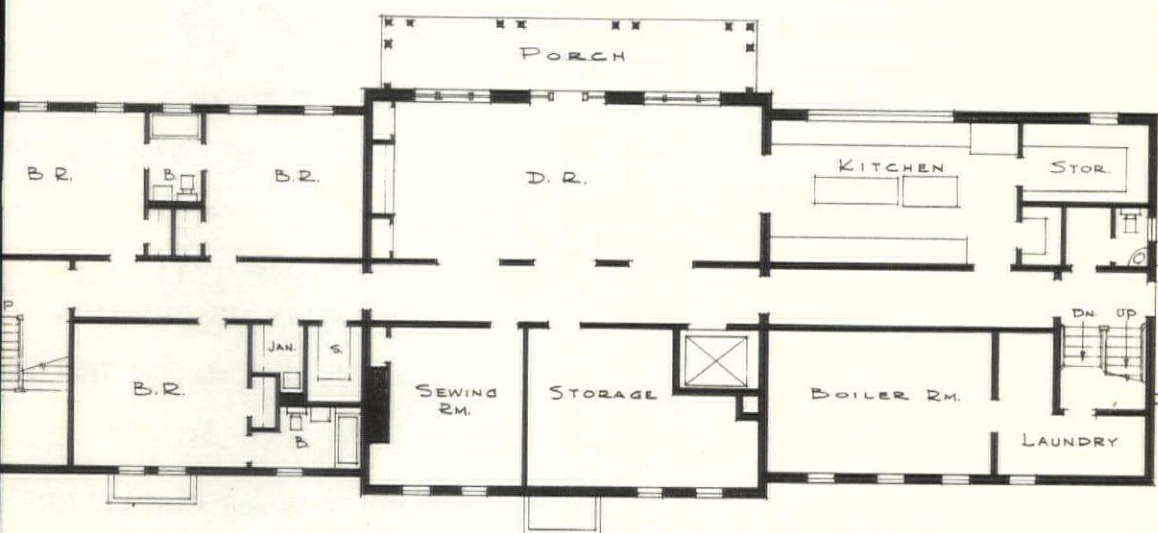
FIRST FLOOR PLAN



Blanchard Stebbins, Inc., Manchester, New Hampshire  
General Contractor



SECOND FLOOR PLAN



BASEMENT FLOOR PLAN

**SCOTT-FARRAR HOME  
PETERBOROUGH**

**CONSTRUCTION:**

Foundations: Concrete.

Walls: Brick with cinder block backers.

Partitions: Gypsum block plastered in some areas; exposed cinder block in other areas.

Dadoes: Ceramic tile in Toilet Rooms; Glazed facing tile in Kitchen.

Floors: Concrete slabs on steeltex and steel joists.

Floorings: Vinyl flooring.

Roof: Wood rafters, boarding, asphalt shingles, copper flashings.

Windows: Wood double-hung sash.

Ceilings: Acoustical plaster in social rooms; hard plaster elsewhere.

Elevator: Hydraulic elevator.

**SCOTT-FARRAR HOME  
PETERBOROUGH**

**Sub-Contractors and Material Suppliers**

Plumbing, Heating and Ventilating—W. J. Parenteau, Manchester.

Electrical—C. H. Austin, Inc., Nashua.

Plastering—Francis P. Connor & Son, Inc., Nashua.

Roofing—Al Melanson Co., Inc., Keene.

Paintings—B. N. Perry & Son, Manchester.

Steel—Lyons Iron Works, Inc., Manchester.

Elevator—Stanley Elevator Company, Nashua.

Ceramic Tile—Zani Tile Company, Watertown, Mass.

Hollow Metal Door Frames—George J. Kehas, Manchester.

Doors and Window Frames—Gregg & Son, Inc., Framingham, Mass.

Hardware—J. J. Moreau & Son, Inc., Manchester.

Kitchen Equipment—Thompson-Winchester Co., Boston, Mass.

**FRANCIS P. CONNOR  
& SON, INC.**

**Plastering Contractor**

FOR

**Scott-Farrar Home**

Peterborough, N. H.

12 Euclid Ave.

Dial TU 3-8100

NASHUA, N. H.



**ZANI TILE COMPANY**

199 DEXTER AVENUE

WATERTOWN 72, MASS.

**FLOOR AND WALL TILES  
OF EVERY DESCRIPTION**

Ceramic Mosaic Floor and Wall Tiles

Marble — Terrazzo

**SUPPLIERS and INSTALLERS  
OF**

**CERAMIC TILE**

AT

**SCOTT - FARRAR HOME  
PETERBOROUGH, N. H.**



## **CHARLES H. AUSTIN, INC.**

ESTABLISHED 1893

ELECTRICAL INSTALLATIONS AND SUPPLIES

178 MAIN STREET

NASHUA, N. H.

Tel. TUxedo 2-1711

## **Electrical Contractor**

— for —

## **SCOTT - FARRAR HOME**

Peterborough, N. H.

## **Plumbing and Heating Ventilating**

AT

WOMEN'S DORMITORY

Durham, N. H.

SCOTT - FARRAR HOME

Peterborough, N. H.

MARSTON ELEMENTARY SCHOOL

Hampton, N. H.

Done by

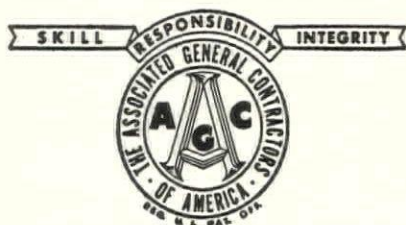
## **W. J. PARENTEAU**

MANCHESTER, N. H.

Res. 88 Belmont St. Dial NA 2-9413

Shop 147 Maple St. Dial NA 2-8130

# **BLANCHARD STEBBINS, INC.**



## **Commercial and Industrial Work**

330 Lincoln Street

Dial NA 3-2273

MANCHESTER, N. H.

*General Contractor*

**SCOTT - FARRAR HOME . . . . . Peterborough**  
**MARSTON ELEMENTARY SCHOOL - Hampton**



Above photos by Douglas Armsden  
Kittery Point, Maine

## Blanchard Stebbins, Inc. General Contractor

### MARSTON ELEMENTARY SCHOOL HAMPTON

#### CONSTRUCTION:

Foundations: Concrete.

Exterior Walls: Brick with cinder block backers.

Dadoes: Glazed facing tile in toilets, corridors, kitchen.

Partitions: Cinder block.

Roof: Longspan steel deck, rigid insulation, built-up roofing; Laminated arches with Tectum deck in Assembly Room.

Floors: Concrete slabs with asphalt tile.

Ceilings: Exposed steel deck with strips of insulating board in some panel troughs.

Windows: Aluminum awning type.

Heating: Unit ventilators in Classrooms; fin-tube radiation elsewhere. Forced hot-water system.

Plumbing—Separate toilet rooms for each pair of Classrooms; sewerage ejector pumps. Cabinet kitchenette in Teachers Room. Gas-fired water heater for summer use.

Electrical: Fluorescent lighting using troughs of roof deck as troffers, plastic louvers.

#### Features:

Classrooms without Corridors; classrooms varying in size by age groups; separate Cafeteria and Assembly areas; large covered activities porch.

### MARSTON ELEMENTARY SCHOOL HAMPTON

#### Sub-Contractors and Material Suppliers

Plumbing and Heating—W. J. Parenteau, Manchester.

Electrical—John J. Reilly, Manchester.

Painting—Paterson & Getchell, Portsmouth.

Glazing—Pittsburgh Plate Glass Co., Manchester.

Steel—Lyons Iron Works, Inc., Manchester.

Cement Floors—Connie's Cement Floor Co. Suncook.





ELECTRICAL  
CONTRACTOR

Residential and Industrial Wiring

DIAL MAN. 3-3568

875 South Willow St., Manchester, N. H.

Motor Repairing

## Barker Steel Company

ENGINEERS and FABRICATORS

CONCRETE REINFORCING BARS

B A R C O

REMOVABLE STEEL PANS  
FOR CONCRETE JOIST CONSTRUCTION

Office and Warehouse

42 School Street

WATERTOWN 72, MASS.

TEL. Watertown 4-4010

Harold L. Barker, General Manager

## GLASS and GLAZING

for  
Women's Dormitory  
Durham, N. H.  
Marston Elementary School  
Hampton, N. H.

— STANDS  
FOR QUALITY

**PAINTS · GLASS**

in homes · offices · factories  
institutions · schools · stores

NTS · GLASS · CHEMICALS · BRUSHES · PLASTICS

**PITTSBURGH PLATE GLASS CO.**  
So. Commercial St., Manchester, N. H.

## Lathing and Plastering

— at —

**New Library  
and  
Women's Dormitory**  
Durham, N. H.

— by —

**P. H. McGranahan  
Company, Inc.**

555 Valley St. Manchester, N. H.  
Dial 2-9373

L A T H I N G

by  
ECONOMY SYSTEM OF LATHING  
Manchester, N. H.



# Women's Dormitory

## University of New Hampshire

Koehler and Isaak, A. I. A., Architects

Harvey Construction Co., General Contractor

The University presented the architects with a clean-cut program, a difficult but interesting site and the ever-present cost factor.

The basic program required the housing of 119 women-students, the matron and attendant service facilities. In addition to the dormitory rooms, the University wished to provide the student with relaxing areas in the form of lounges on each floor, plus the main lounge for guest entertainment. Attendant to the main lounge is a kitchen for light snacks. Laundry areas on each floor plus the main laundry in the basement will solve the feminine needs.

We of New Hampshire are familiar with the puckish sense of humor with which that giant Nature rolled everything from glaciers to rocks around our now picturesque country side. Having done all the mischief and nonsense it could think of, it then covered the rock with overburden, planted lovely trees and waited patiently for millions of years for the University, the architects and the contractor to build a dormitory. The reinforced concrete columns, grade beams are thoroughly anchored in the rock foundations, and the building areas are planned to the contours; the resultant finished building will provide the students with a wonderful setting.

The structural frame is reinforced concrete columns, floors and attic floors. The roof is wood frame. The exterior walls are 8" concrete blocks, 4" brick veneer. Windows are heavy gauge aluminum, sliding. The interior doors are solid core plywood set in steel frames. Interior partitions are metal studs, wire lath and plaster; the ceiling of the rooms painted concrete, interior face of exterior walls are strapped, lathed and plastered; floors are asphalt tile covered. The corridors are of the same wall finish as rooms but have acoustical plaster ceilings.

The summary of costs based on the contract reveals a cost of construction per student far below the national average which is good news to the taxpayer, University and architect. Further analysis of the conditions of site, and of climatic conditions both requiring high investment in sub-surface stabilization and comfort control make the below average cost that much more satisfying.

---

### UNIVERSITY OF NEW HAMPSHIRE Womens Dormitory

#### DATA:

Total Cost .....	\$357,000
Sq. Ft. ....	24,000
Cost—sq. ft. ....	\$14.50
Number of Students .....	119
Sq. Ft.—student .....	208
Cost — per student .....	\$3,006

---

### UNIVERSITY OF NEW HAMPSHIRE WOMENS DORMITORY

#### Sub-Contractors and Material Suppliers

Plumbing, Heating and Ventilating — W. J. Parenteau, Manchester.

Electrical—John J. Reilly, Manchester.

Plastering—P. H. McGranahan Co., Inc., Manchester.

Steel Erection—J. Scanlon & Co., Inc., Manchester.

Waterproofing—Western Waterproofing Co. Boston, Mass.

Painting—B. N. Perry & Son, Manchester.

Steel—Barker Steel Company, Watertown, Mass.

Cast Stone—Cambridge Cement Stone Co. Allston, Mass.

Glazing—Pittsburgh Plate Glass Co., Manchester.

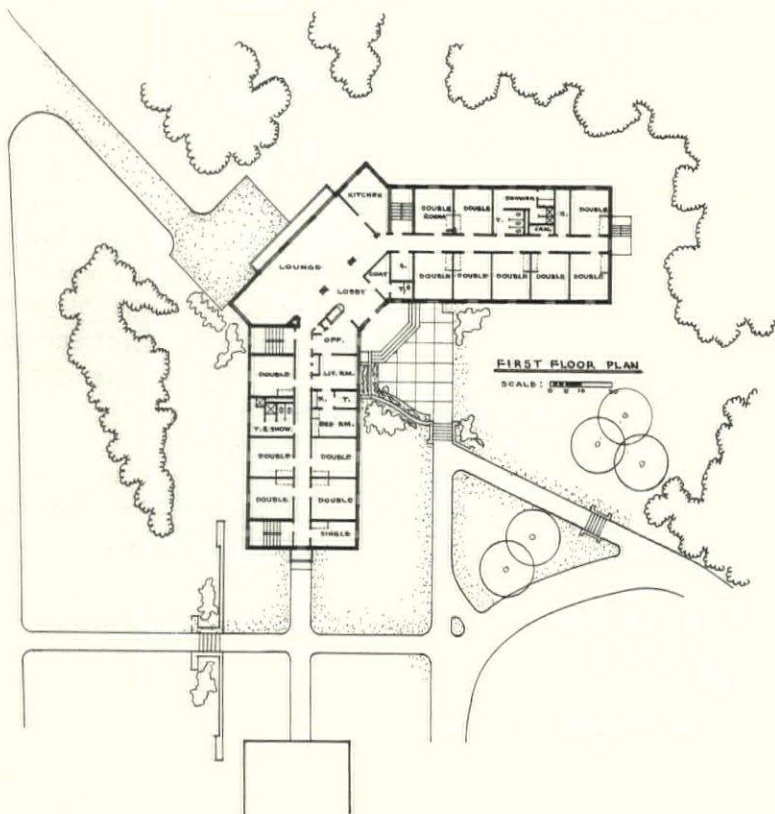
Hollow Metal Door Frames—Maurice Laframboise, Manchester.

Rubbish Chute Door—Raymond H. Pierce Co. Boston, Mass.





*Women's Dormitory, University of New Hampshire*





"The home building industry can profit richly by the automakers' experience. And until we do, the automakers will continue to sell circles around us in competition for the consumer dollar.

"All the new higher FHA standards cost much less to install in a new house during construction than they would cost to remodel into an existing house. (For example: it costs two-and-a-half times as much to insulate an old house; it costs two or three times as much to provide adequate wiring. It costs twice as much to build appliances into an old kitchen.)

"So all the new higher standards would make it easier to sell more houses in competition with the existing supply.

"Let's not be penny wise and pound foolish. Let's be smart and push for acceptance of all the new FHA standards — the ones that will help us build better along with those that will help us build cheaper."

---

## **HIGH TEMPERATURE FORECAST**

**FORECAST** — Excessive high temperatures throughout the summer.

Faced with such conditions, most of us turn our thoughts to ways and means of beating the heat. Little thought is given to our plight about six months hence, when we are troubled with bone-chilling drafty areas about our home.

It may not be Utopia, because there is expense attached, however, discerning parties are fast becoming acquainted with what is known as Central System Air Conditioning.

This method of heating and cooling in one installation really offers the property owner and builders every advantage on today's market. Affording proper temperature control, the system combines heating with forced hot water, with filtered air circulation. For cooling in summer the same system is used with the application of a chilling unit with filtered air circulation.

One of the better known systems of this type is Borg-Warner's Hydraline, distributed in this area by Colonial Supply Corporation of Manchester.

## **COBE & FOSTER, INC., MOVE TO NEW LOCATION**

Cobe & Foster, Inc., registered professional engineers, have moved their location to 566 Willow Street, Manchester. Mr. Cobe explained the new location provides increased floor space, allowing for complete stocks of units, parts, equipment, etc., under one roof.

Selling wholesale only as air conditioning, refrigerating, heating supply jobbers, the firm will continue to represent Typhoon air conditioning. Recently they have been appointed authorized wholesalers for Bendix-Westinghouse hermetic compressors, condensing units and parts.

---

## **SANDWICH PANEL HAS LIGHT WEIGHT**

A new building product development, lightweight translucent structural curtain wall panels that provide exceptional design freedom at minimum construction cost, has been introduced by Kalwall Corp. of Manchester. The panels are prefabricated self-supporting "sandwiches" of Fiberglas reinforced plastic sheets bonded to an aluminum grid. Completely finished for both exterior and interior wall and roof surfaces, they are available in four modular sizes and six colors.

The sections weigh from 1.42 to 1.6 pounds per square foot, depending on thickness, or about one-seventh the weight of equivalent metal sandwich panels. They can be handled easily on the job by one man. A panel measuring four by eight feet and two and three-quarter inches thick, for example, weighs fifty-one pounds.

Tested extensively in various types of buildings over the past five years, Kalwall panels have proven useful for institutional, commercial and industrial buildings.

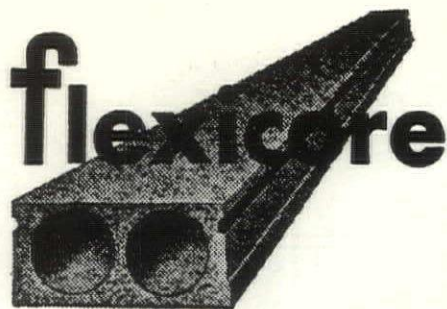
---

Wisdom is knowing what to do next; Skill is knowing how to do it; and Virtue is doing it.

—David Starr Jordan



## URASTONE FLEXICORE CORP.



Long Span Precast Concrete  
Floor and Roof Units

Boston Office:  
432 Massachusetts Avenue  
Arlington, Mass.

Phones: Mission 3-7841 and Mission 8-0494

HARRY C. A. BEHR, Sales Engineer  
PAUL T. HENNESSEY

Incorporated  
1887

Federalized  
1935

### Progress Report

of

### Manchester Federal Savings

#### GROWTH SINCE

FEDERALIZATION	December 1935	December 1956	Gain
Total Assets .....	\$2,669,834.84	\$46,841,060.34	1654%
Mortgage Loans .....	2,530,668.24	41,019,225.97	1521%
Savings Accounts .....	2,204,803.49	38,605,025.70	1651%
Surplus and Reserves .....	255,566.25	4,529,904.57	1672%
Members .....	2,737	24,586	798%

**Manchester**  
**FEDERAL SAVINGS**  
AND LOAN ASSOCIATION

156 HANOVER STREET

Current Dividend 3 1/4%

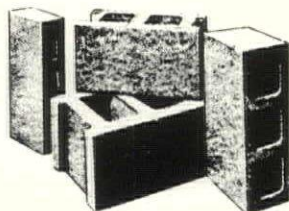


"The Friendly Bank that Service Built"

## ANEL INDUSTRIAL EQUIPMENT & SUPPLY CO., INC.

So. Main St. Concord, New Hampshire  
Capitol 5-2726

Broken Bits  
Cosby Clips  
Proquip Hose & Couplings  
Alcan Drill Steel & Pavement Breaking  
Tools  
Laughlin Drop Forge Fittings  
Mon valves & Couplings  
Rings — New and Repaired  
Welding Supplies — Marquette, Victor  
& Stultz-Sickles  
Complete Motor Rebuilding  
Whaler Electric Plants  
Complete stock of All sizes Machine  
Bolts & Cap Screws



## "MONADNOCK BLOCKS"

CONCRETE — CINDER

Made to Meet A.S.T.M. Requirements

**Arthur Whitcomb, Inc.**

725 Main St.

Keene, N. H.

Dial EL 2-0101

# Serving the People of NEW HAMPSHIRE

---

John D. Betley,  
Manchester

Horace G. Bradt,  
Exeter

Dirsa and Lampron,  
Manchester

W. Brooke Fleck,  
Hanover

Alfred T. Granger Associates,  
Hanover

Russell S. Harmon  
Durham

Irving W. Hersey Associates,  
Durham

John R. Holbrook Associates  
Keene

Hudson and Ingram,  
Hanover

Koehler and Isaak,  
Manchester

Willis Littlefield,  
Dover

Lyford and Magenau  
Concord

Alexander Majeski,  
Bedford

Edward Benton Miles,  
Exeter

Arnold Perreton and Associates,  
Concord

Carl E. Peterson,  
Manchester

Prescott and Erickson  
Laconia

Leo P. Provost,  
Manchester

Norman P. Randlett,  
Laconia

Tracy and Hildreth,  
Nashua

William L. White,  
Exeter

Walter Thomas Williams  
Rochester

Maurice E. Witmer, Portsmouth

**Participating Members of the New Hampshire Chapter**

# A. I. A.



# **Dutch Boy** —THE NAME TO GO BUY—FOR EVERY PAINT JOB

Best choice of professional  
painters—first choice with  
home owners—that's *Dutch Boy*  
paint. There's a *Dutch Boy*  
paint specially blended for  
every painting need, inside  
or outside your home, and  
you can depend on it for  
long-lasting beauty. Choose  
Dutch Boy today at—



PAINT DEPARTMENT  
Main Store — Street Floor  
BUILDERS' PAINT DEPARTMENT  
Opposite Main Store  
(Rear of State Theatre)

EXCLUSIVE DEALER  
**J. J. MOREAU & SON, INC**  
MANCHESTER, N. H.  
Dial NA 4-4311

## **Spaulding Brick Co., Inc.** NEW ENGLAND DISTRIBUTORS

•  
All Kinds of Face and  
Common Brick and Facing Tile  
•

34 Gloucester Street  
BOSTON 15, MASSACHUSETTS  
KENmore 6-0320

## **PALMER** **Plumbing Supply Co.**

Wholesalers

Plumbing - Heating - Mill Supplies

Distributors of

WEIL-McLAIN BOILERS

KOHLER ENAMELWARE

PETRO OIL BURNERS

ROCHESTER, LACONIA, KEENE, N. H.  
PORTLAND, ME.

"Competent Engineering Service"

## **REFRIGERATION** **DISTRIBUTORS** **FOOD SERVICE** **CONSULTANTS**

Complete Planning Service

For Markets and Food Stores  
Special Industrial Refrigeration  
Complete Air Conditioning  
Hotel, Restaurant and  
Institutional Kitchens,  
Cafeterias, Dining Areas  
Cocktail Lounges

**HUMPHREYS, INC.**  
180 No. Main Street - Concord, N. H.

A Business Devoted To Those  
Who Serve Food

## NEW HAMPSHIRE ARCHITECT

P. O. Box 291, Concord, N. H.

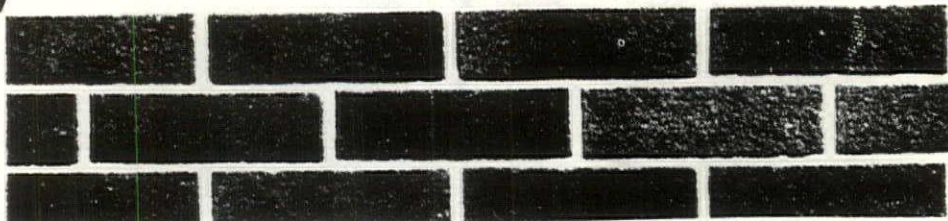
Sec. 34.66 P. L. & R.  
U. S. POSTAGE  
PAID  
Concord, N. H.  
PERMIT NO. 297

Library-American Inst. of Archt's.  
1735 New York Ave. N.W.  
Washington 6, D.C.

Form 3547 Requested

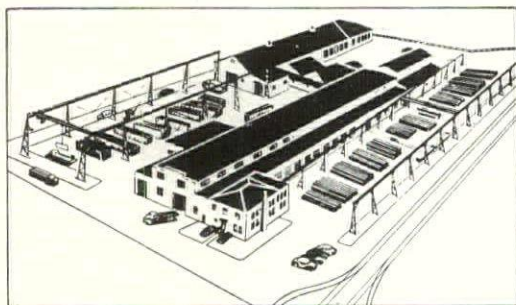
# Build with Brick and Tile

Face Brick - Facing Tile - Flue Lining  
Metal Specialties - Sewer Pipe



## DENSMORE BRICK COMPANY

Manufacturers and Distributors  
Lebanon New Hampshire



Aerial view of Vermont Structural Steel Corp.

Serving  
Northern New England  
and New York  
with Steel Products

Our large steel fabrication plant can provide you with structural steel, longspan trusses, ornamental iron and fabricated platework. Our warehouse is kept stocked with complete inventories of steel and steel products. Prompt delivery is our goal on all orders, large or small.

LET US  
QUOTE ON YOUR  
REQUIREMENTS



Plant and Warehouse

Dial

UNiversity  
4-9844

Burlington

207 FLYNN AVENUE  
BURLINGTON, VT.