

New Hampshire ARCHITECT

AMERICAN INSTITUTE

OF

ARCHITECTS

SEP 5 1956

LIBRARY



OFFICIAL PUBLICATION

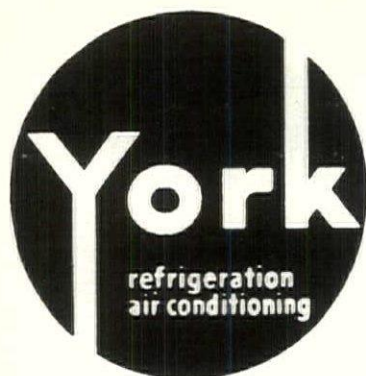
New Hampshire Chapter of the American Institute of Architects



AUGUST
1956

20¢-COPY
\$2.00-YEAR

AIR CONDITIONING
Residential - Commercial - Industrial



Year-Round or Summer

Engineering Assistance Available For Your
Air Conditioning Problems

NEW HAMPSHIRE YORK CO.
254 Lincoln St. Manchester, N. H.

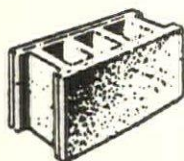
DUROWALL
THOROSEAL
Sonneborn Products

Brick

Glazed Tile

Masonry Supplies

STEEL & ALUMINUM
SASH



CORRIVEAU-ROUTHIER
CEMENT BLOCK CO.

266 Clay Street Manchester, N. H.

Dial 3-5293

CALIFORNIA PAINTS

provide:

1. LOWER COST PAINTING through ease of application. They are formulated for professionals.
2. MAXIMUM COVERAGE with the desired paint film. Leading painting contractors have job-proved California Paints.
3. UNSURPASSED DURABILITY assured by use of finest raw materials and thoroughly tested formulations.



PLEXICOLOR acrylic exterior flat
Gives wonderful coverage on all exterior surfaces and lasts longer than ordinary paints. Seals and protects all masonry, stucco, painted wood, and unglazed tile. Excellent over asphalt and asbestos shingles. Doesn't water-spot and rain washes clean to give a new-paint look. Withstands high temperatures.

ALLWALL vinyl interior flat
Made for all interior walls, ceiling, and trim — even steam radiators — where brilliant deep or pastel colors are desired. Flows evenly over smooth plaster to give a hard, tough finish. Colors remain fresh-looking longer. Most scrubbable interior paint.

PRIMER-SEALER vinyl
Provides a perfect base for all kinds of paints. Seals the surface so the finish coat goes on evenly and easier.

So little effort to brush on, yet it has excellent adhesion. You can apply the finish coat in 30 minutes to 2 hours for 2-coat-a-day painting.

RAYLITE rubber latex interior flat
Economical in cost. Brushes on so quickly. Dries in about 30 minutes. Second coat or touching-up immediately afterwards. Very abrasion resistant and can be scrubbed in 3 days.

RAYOTINT alkyd latex flat
Lowest in cost of new modern paints. Gives superior one-coat coverage. Recommended especially for use on rough or irregular surfaces such as masonry block. Used in light pastel colors only. Withstands washing after 30 days.

RAYGLOS latex
Semi-gloss quick drying, self priming, water thinned paint for all interior surfaces. Will not raise wood grain, non-tacky, easy flowing.

Produced by New England's original latex paint manufacturer
CALIFORNIA STUCCO PRODUCTS OF N.E., INC.
169 WAVERLY STREET, CAMBRIDGE 39, MASS.
Architects Specification Guide available on request.

NEW ENGLAND INSULATION CO.

Contractors - Distributors

ASBESTOS MAGNESIA FIBERGLAS

KAYLO and CORK PIPE COVERINGS

ASBESTOS MILLBOARD & PAPER

Tel. Highlands 5-7800

839-845 Albany St. Boston 19, Mass.

ARTHUR E. SWANSON, Manager



OFFICERS

President

NORMAN P. RANDLETT, Laconia

Vice-President

JOHN D. BETLEY, Manchester

Secretary

WALTER THOMAS WILLIAMS
Rochester

Treasurer

ROBERT SNODGRASS, Nashua

DIRECTORS

ALEXANDER MAJESKI, Bedford

MITCHELL P. DIRSA, Manchester

JOHN R. HOLBROOK, Keene

EDITOR

ALEXANDER MAJESKI, R. A.
Palomino Lane
Manchester, N. H.

PUBLISHER

LAWRENCE J. MOYNIHAN
P. O. Box 291
Concord, N. H.

New Hampshire Architect is published monthly at 181 North Main Street, Concord, N. H., under the direction of the president and board of directors of the New Hampshire Chapter, American Institute of Architects, to promote the objectives and public relations of the chapter. Advertising rates furnished upon request.

New Hampshire ARCHITECT

VOL. 8

AUGUST, 1956

NO. 1

TABLE OF CONTENTS

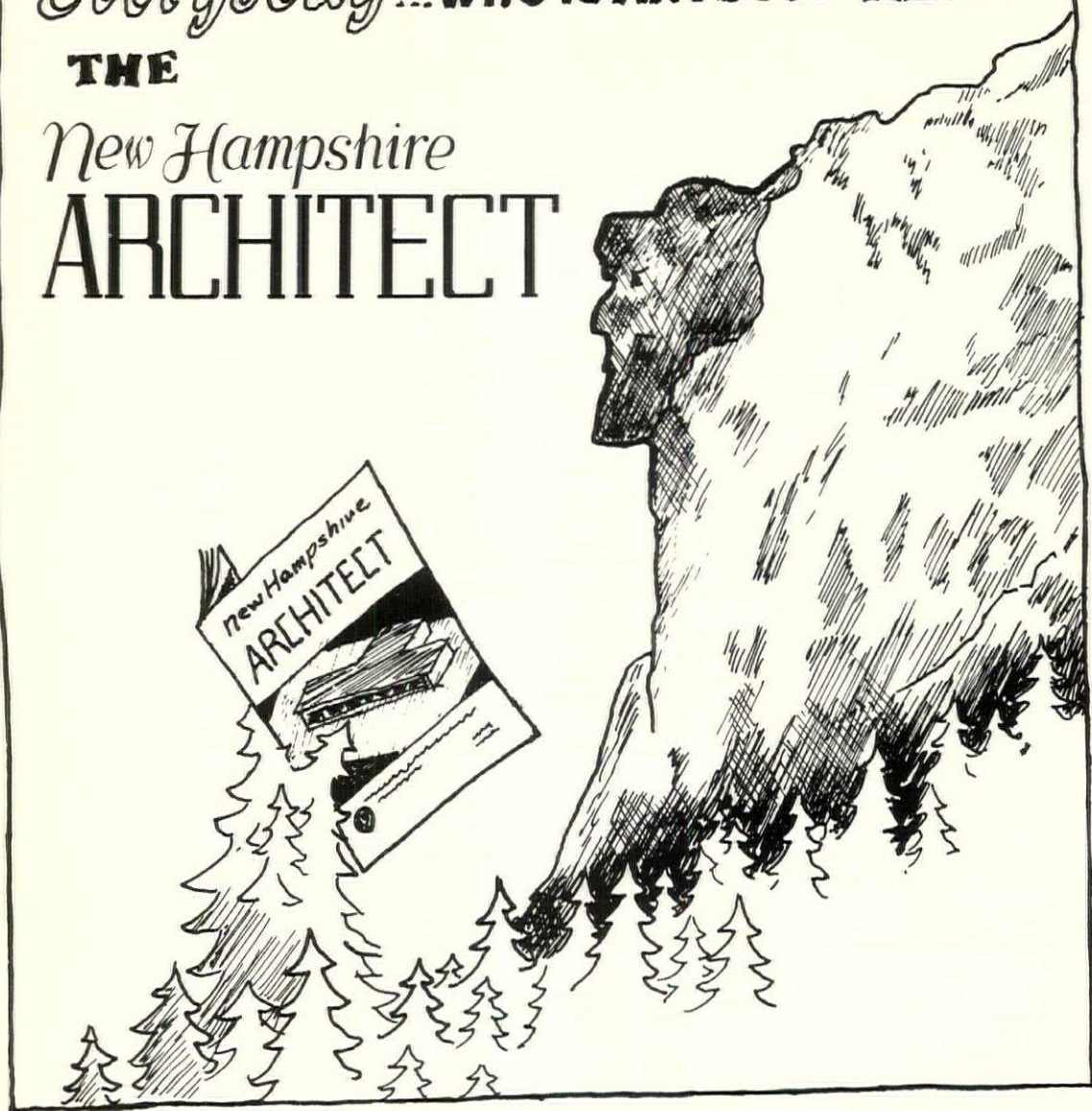
Churches Designed by Dirsa and Lampron	5 to 31 inc.
Paul Harvey Alerts Contractors	32
East Front of Capitol to be Extended	33
State Architects Guests of N.E.C.M.M.A.	34
N. E. Contract Awards	35
Contract Awards for Future Construction in N. H.	35
Modern Masonry Conference	36 - 37

OUR COVER

Sanctuary of Chapel of The Holy Spirit, South
Gardner, Mass.

Photo By
Peter Nappellio
Worcester, Mass.

Everybody...WHO IS ANYBODY READS
THE
New Hampshire
ARCHITECT



A ROOF BY THERRIEN IS A GOOD ROOF

TEL. 3-6193

199 HAYWARD STREET

MANCHESTER, N. H.

NO CHURCH TOO SMALL...

No cathedral too grand!

TO introduce ourselves to the Architects and members of the Clergy that we may not have had the privilege and pleasure of serving during the past 25 years, we offer a complete designing and advisory service for the convenience of our prospective clients.

WE will attempt to select various Sanctuary items most often needed; and to suggest designs appropriate for the modest country church or the city cathedral. Whether the architecture is traditional or contemporary, we can supply pieces to match pre-dictated styles or items of modern design retaining the character of the existing architecture; thus affecting continuity.

WE would deem it a privilege to assist in any way on your Church Furniture problems whether it be a High Altar, Pews or Vestment Case.

GOTHIC CRAFT
NORTHBORO
MASSACHUSETTS

CHURCHES

By

Dirsa and Lampron, A.I.A.

Architects and Engineers

Manchester, N. H.

The following group of churches have been recently erected for various Roman Catholic Parishes in New Hampshire, Vermont and Central Massachusetts. They are modest edifices of various seating capacities which were designed and constructed within well defined budgets. The construction costs vary from \$130,000.00 to \$200,000.00.

These churches were designed for the complete needs of all the activities of a present day parish. Provisions have been incorporated for all social and instructional functions in the lower levels. Suitable separate means of access have been provided for these areas without interference with the upper church functions. The choice of materials and the designs of the buildings were carefully selected to obtain low initial costs, along with low maintenance, operating and insurance costs.

Facilities provided on the basement floors are: hall, stage, dressing rooms, kitchen, men and women toilet rooms and boiler room. Facilities provided for on the first floors are: narthex, nave, sanctuary, confessionals, priests' sacristy and boy's sacristy. In most of the churches a sound-proof cry room was included with access from the narthex for the use of families with small children. The choir and organ loft in all cases is above the narthex. An off-street parish parking area is a feature of every church.

The construction of all churches is essentially as follows:

Basement: Concrete foundations, concrete floor slabs on grade, brick and cinder block exterior walls above grade, cinder block interior partitions, asphalt tile floor finish, acoustical plaster ceilings, all interior masonry walls painted.

First Floor:

Concrete floor slabs on steel joists, asphalt, rubber and vinyl tile floor finish, brick and cinder block exterior walls, all interior walls and partitions are finished with face brick, ceilings of secondary rooms are acoustical plaster and ceilings over nave and sanctuary are of fibre tile, all oak interior trim and doors, wood roof sheathing on steel frames, covered with slate on asphalt aluminum and wood sash.

Zoned forced hot water heating systems were installed in each church. Several of the churches are equipped with mechanical bell ringing equipment. Limestone was used for all exterior trim and granite was used for exterior steps and platforms on several of the churches. The lighting system installed in the naves of all churches is unique because it is flush with the ceiling with provisions made for relamping from the attic space above. All churches are completely wired for sound systems with microphone stations located in the sanctuary, in the choir loft and on the stage.

MAIN ALTAR CHAPEL OF THE HOLY SPIRIT

South Gardner, Massachusetts



—Photo By Peter Nappellio, Worcester, Mass

ST. EDMOND CHURCH MANCHESTER, N. H.

1951

The Most Rev. Matthew F. Brady, D. D., Bishop of Manchester
Rt. Rev. J. E. Vaccarest, D. P., Pastor

GENERAL CONTRACTOR

L. E. Martel & Son, Manchester, N. H.

LIMESTONE

Joseph F. Carew Inc., Boston, Mass.

GRANITE

Deer Island Granite Corp., Stonington, Maine

STRUCTURAL STEEL

Lyons Iron Works Inc., Manchester, N. H.

STEEL JOISTS

Truscon Steel Co., So. Boston, Mass.

ROOFING

M. J. Murphy & Sons Inc., Dover, N. H.

PLASTERING

P. H. McGranahan Co. Inc., Manchester, N. H.

FLOORS

Better Floors, Manchester, N. H.

FIBRE & ACOUSTICAL CEILING

Howland Insulating Co., Laconia, N. H.

MILL WORK

J. Hodge Co. Inc., Manchester, N. H.

PAINTING

B. N. Perry, Manchester, N. H.

SEPARATE CONTRACTS

PLUMBING, HEATING &
VENTILATING

W. J. Parenteau, Manchester, N. H.

ELECTRICAL

John J. Reilly, Manchester, N. H.

FINISH HARDWARE (RUSSWIN)

J. J. Moreau & Sons Inc., Manchester, N. H.



Electrical Contractor

— for —

**St. Edmond Church
Manchester, N. H.**

53 Hollis St.

Dial 3-3568

Manchester, N. H.

Tel. NA 2-3293

Established 1871

J. Hodge Company, Inc.

Sundial Avenue

Manchester, New Hampshire

MILLWORK

for

St. Edmond Church

MANCHESTER, N. H.

and

**Our Lady of the Lake
Church and Rectory**

WHALOM, Leominster, Mass.



"Steel When You Want It"

LYONS IRON WORKS, Inc.

STEEL STRUCTURES DESIGNED AND FABRICATED
ARCHITECTURAL AND ORNAMENTAL IRON

Office and Works

MANCHESTER NEW HAMPSHIRE

It was our privilege to furnish the STRUCTURAL STEEL

for

ST. EDMOND CHURCH, MANCHESTER, N. H.

OUR LADY OF THE LAKE CHURCH and RECTORY

WHALOM, LEOMINSTER, MASS.

ST. BONIFACE CHURCH, LUNENBURG, MASS

INFANT JESUS CHURCH, NASHUA, N. H.

PLASTERING

— for —

St. Edmond Church

MANCHESTER, N. H.
and

St. Boniface Church

LUNENBURG, MASS.

— by —

P. H. McGranahan Company, Inc.

555 Valley St. Manchester, N. H.
Dial NA 2-9373

LATHING

by

ECONOMY SYSTEM OF LATHING
Manchester, N. H.

W. J. PARENTEAU

MANCHESTER, N. H.

Res: 88 Belmont St.

Shop: 147 Maple St.

Dial NA 2-9413

Dial NA 2-8130

Plumbing and Heating Contractors

for

St. Edmond Church

MANCHESTER, N. H.

Dutch Boy —THE NAME TO GO BUY—FOR EVERY PAINT JOB

First choice of professional painters—first choice with home owners—that's *Dutch Boy*. There's a *Dutch Boy* finish specially blended for every painting need, inside or outside your home, and you can depend on it for long-lasting beauty. Choose yours today at—



PAINT DEPARTMENT
Main Store — Street Floor

BUILDERS' PAINT DEPARTMENT
Opposite Main Store
(Rear of State Theatre)

EXCLUSIVE DEALER
J. J. MOREAU & SON, INC
MANCHESTER, N. H.
Dial 4-4311

BETTER FLOORS

Leo A. Laflamme, Prop.

10 Prospect St.

Dial NA 2-8813

MANCHESTER, N. H.

.... We had the pleasure of installing
RUBBER TILE and ASPHALT TILE

— for —

St. Edmond Church Manchester, N. H.

ST. EDMOND CHURCH

Manchester, N. H.



Photo By
The Camera Shop
Manchester, N. H.

OUR LADY OF THE LAKE CHURCH AND RECTORY WHALOM, LEOMINSTER, MASS.

1953

The Most Rev. John J. Wright, D. D., Bishop of Worcester
Rev. Francis J. Craven, Pastor

GENERAL CONTRACTOR

LIMESTONE

STRUCTURAL STEEL

STEEL JOISTS

ALUMINUM SASH

ROOFING

PLASTERING

FLOORS

FIBRE TILE CEILINGS

MILL WORK

PAINTING

Caron Construction Co. Inc., Manchester, N. H.

Calcagni & Belkin, Worcester, Mass.

Lyons Iron Works Inc., Manchester, N. H.

Fabricated Steel Products, Boston, Mass.

George J. Kehas, Manchester, N. H.

Louis Cutler Roofing Co., Worcester, Mass.

J. S. Prunier & Sons Inc., Worcester, Mass.

Bianchi Tile & Marble Co., Worcester, Mass.

Pitcher & Co., Worcester, Mass.

J. Hodge Co. Inc., Manchester, N. H.

Michael Orlando, Framingham, Mass.

SEPARATE CONTRACTS

PLUMBING

HEATING & VENTILATING

ELECTRICAL

SPRINKLERS

BELL RINGING EQUIPMENT
(VERDIN)

W. J. Parenteau, Manchester, N. H.

Thomas F. Harney & Sons, Worcester, Mass.

A & E Electrical Service Co. Inc.,
Worcester, Mass.

The Thayer Company, Springfield, Mass.

Joseph P. Duffy, Pittsford, Vermont

VALLEY METAL PRODUCTS COMPANY

PLAINWELL
MICHIGAN

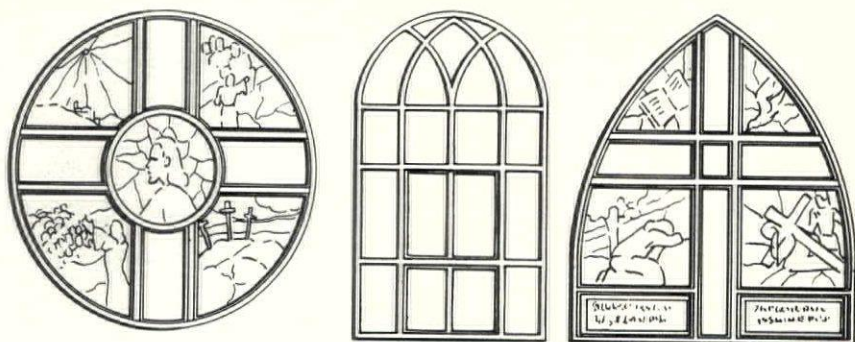
VAMPCO

Individually Designed

VAMPCO ALUMINUM WINDOWS

FOR THESE

OUTSTANDING MODERN CHURCHES



Another Fine Example of VAMPCO *Versatility*

Featuring Custom Design and Fabrication at Budget Costs

GEORGE J. KEHAS

Shirley Park

Goffstown, N. H.

Tel. HYacinth 7-4789

W. J. PARENTEAU

Plumbing Contractor

for

OUR LADY OF THE LAKE

CHURCH AND RECTORY

WHALOM, LEOMINSTER, MASS.

Res. 88 Belmont St. Dial NA 2-9413

Shop 147 Maple St. Dial NA 2-8130

MANCHESTER, N. H.

Caron Construction Co., Inc.

General Contractors and Builders

161 Baker Street

Phones NA 2-4073—2-8475

MANCHESTER, N. H.

•

General Contractor

for

OUR LADY OF THE LAKE

CHURCH and RECTORY

WHALOM, LEOMINSTER, MASS.

I. T. VERDIN CO.

CINCINNATI, OHIO

•

Electric Bell Ringers

Bronze Bells Electronic Bells

Tower Clocks Tower Clock Repairs

•

Eastern Representative

JOSEPH P. DUFFY

Stony Hill Road

PITTSFORD, VERMONT

Granite - Limestone

CALCAGNI & BELKIN

BOX 715

WORCESTER, MASS.

Building Stone Contractors

Bluestone

Slate

OUR LADY OF THE LAKE CHURCH AND RECTORY

Leominster, Mass.



Photo By
Durette Photo Co.
Manchester, N. H.

ST. BONIFACE CHURCH LUNENBURG, MASS.

1954

The Most Rev. John J. Wright, D. D., Bishop of Worcester

Rev. Peter B. Malloy, Pastor

GENERAL CONTRACTOR

W. W. Granger Co., Shrewsbury, Mass.

LIMESTONE

New England Cut Stone Co. Inc.,
Dorchester, Mass.

STRUCTURAL STEEL

Lyons Iron Works Inc., Manchester, N. H.

STEEL JOISTS

Truscon Steel Co., So. Boston, Mass.

ALUMINUM SASH

George J. Kehas, Manchester, N. H.

ROOFING

A. L. Melanson Co. Inc., Gardner, Mass.

PLASTERING

P. H. McGranahan Co. Inc., Manchester, N. H.

FLOORS

M. Frank Higgins Co. Inc., Boston, Mass.

FIBRE TILE CEILINGS

Pitcher & Co., Worcester, Mass.

MILL WORK

Tolle-Bickford Lumber Co. Inc., Nashua, N. H.

PAINTING

Alexander L. Lercari Co., Boston, Mass.

SEPARATE CONTRACTS

PLUMBING

HEATING & VENTILATING

W. J. Parenteau, Manchester, N. H.

ELECTRICAL

Eyles Electric Inc., Fitchburg, Mass.

FINISH HARDWARE (LOCKWOOD)

Waite Hardware Co., Worcester, Mass.

PEWS, ALTARS, ETC.

Gothic Craft, Northboro, Mass.

STATUES & STATIONS

Da Prato of Boston

STAINED GLASS

Francesco Ruocco, Haverhill, Mass.

Alexander L. Lercari Co.
Decorative Painting

260 Tremont Street
BOSTON 16, MASSACHUSETTES

PAINTING CONTRACTOR
St. Boniface Church
LUNENBURG, MASS.

**Plumbing, Heating
and Ventilating**

— for —

St. Boniface Church
LUNENBURG, MASS.

Done by

W. J. PARENTEAU
MANCHESTER, N. H.

Res. 88 Belmont St. Dial NA 2-9413
Shop 147 Maple St. Dial NA 2-8130

Acoustical Ceilings

in

Dirsa and Lampron Designed Churches

Our Lady of the Lakes,

St. Boniface Church

Infant Jesus Church

by

Pitcher & Company, Inc.

Worcester — Cambridge — Providence

Goffstown, N. H.
Tel. HYacinth 7-2376

Durette Photo Co., Inc.
EVERYTHING IN PHOTOGRAPHY

WE DID PHOTOS OF RENDERINGS
On

Our Lady of the Lake Church and Rectory

St. Boniface Church

Infant Jesus Church

Chapel of the Holy Spirit

COMMERCIAL PHOTOGRAPHY

Color or Black & White

Exterior — Interior — Landscape

Machinery — Industrial — Catalog

Telephone NA 2-4233
57 Manchester St. Manchester, N. H.

AL MELANSON
Company, Inc.


Roofing Contractors

for
St. Boniface Church
Lunenburg, Mass.
Chapel of the Holy Spirit,
So. Gardner, Mass.

Roofing

SHEET METAL - WATER PROOFING
CONTRACTORS

353 West St., Keene, N. H., Tel. 2976
22 E. Broadway Gardner, Mass. Tel. 651



for
**STAINED
GLASS
WINDOWS**

Consult
**THE ARTIST
AND CRAFTSMAN**

**FRANCESCO RUOCCO
STUDIOS**
123 WATER STREET
HAVERHILL, MASS.

FERGUSON COMPANY

25 HUNTINGTON AVENUE
BOSTON 16, MASSACHUSETTS

**Distributors of All Types of Face Brick and
Glazed and Unglazed Structural Facing Tile**

CHURCH OF ST. BONIFACE

Lunenburg, Mass.



Photo By
Durette Photo Co.
Manchester, N. H.

ST. FRANCIS OF ASSISI CHURCH WINDSOR, VERMONT

1954

The Most Rev. Edward F. Ryan, D. D., Bishop of Burlington
Rev. William B. Ready, Pastor

GENERAL CONTRACTOR

Douglas E. Page, Claremont, N. H.

LIMESTONE & GRANITE

Providence Granite Co. Inc., Providence, R. I.

STRUCTURAL STEEL

Vermont Structural Steel Corp.,
Burlington, Vermont

STEEL JOISTS

Truscon Steel Co., So. Boston, Mass.

ALUMINUM SASH

George J. Kehas, Manchester, N. H.

MILL WORK

Cole's Mill Inc., Littleton, N. H.

SEPARATE CONTRACTS

ELECTRICAL

Frank T. Cody Inc., Hanover, N. H.

FINISH HARDWARE (LOCKWOOD)

E. R. Wiggins Supply Co., Springfield, Vermont

BELL RINGING EQUIPMENT (VERDIN)

Joseph P. Duffy, Pittsford, Vermont

PEWS, ALTARS, ETC.

Gothic Craft, Northboro, Mass.

STAGE CURTAINS

Capitol Theatre Supply Co., Boston, Mass.

VERMONT SLATE

for

Fine Buildings

Floors - - - Roofing

Flagstone - - - Structural

Our quarries and finishing plants producing all colors of natural Vermont slate are at your service. Consult our estimating department for prompt quotations and general information.

VERMONT STRUCTURAL SLATE CO, Inc.

FAIR HAVEN, VT.

TEL. 28

FRANK T. CODY CO.

Electrical Contractors

HANOVER, N. H.

Phone Hanover 720

ELECTRICAL CONTRACTORS

for

ST. FRANCIS OF ASSISI CHURCH

Windsor, Vermont

COLE'S MILL, INCORPORATED

LITTLETON, NEW HAMPSHIRE TEL. 4-3391

SUPPLIERS OF ARCHITECTURAL MILLWORK

for

ST. FRANCIS OF ASSISI CHURCH

at

WINDSOR, VERMONT

**Architectural Woodwork and Custom
Furniture is Our Only Business**



PLEXTONE®

MULTICOLORED ENAMEL

IDEAL FOR RELIGIOUS INSTITUTIONS

TYPICAL PLEXTONE APPLICATIONS
In Churches, Chapels and Convents

ST. BENEDICT ACADEMY CHAPEL Pittsburgh
• TEMPLE BETH EL, South Orange • TEMPLE
B'NAI ABRAHAM, South Orange • ST. JUDE
CHURCH, Montreal • ST. JEAN de la CROIX
CHURCH, Montreal • METHODIST CHURCH,
Whitehaven, Tenn. • ROSEVILLE PRESBY-
TERIAN CHURCH, Newark • OUR LADY-
STAR-OF-THE-SEA CHURCH, Atlantic City
• BAPTIST CHURCH, Houston • MT. ST.
MARY'S CONVENT, Wichita • TEMPLE
JUDEA, Skokie • KANSAS MEMORIAL UNION,
Lawrence •

Never before a paint for church interiors like
amazing, rugged Color-flecked PLEXTONE. It's
revolutionary . . . two or three different colors
(sprayed at ONE time from ONE gun WITH-
OUT SPRAY DUST) which form a multicolored,
textured pattern. It resists wear, soil . . .
ARCHITECTS find that PLEXTONE's uniform
coverage on different types of low-cost surface
materials gives them new styling resources . . .
and new design possibilities because of its high
light reflectivity and durability. PAINTING
CONTRACTORS say PLEXTONE goes on easier,
WITHOUT SPRAY DUST, makes possible neater,
cleaner jobs.

Stain Resistant — Scratch Resistant — Mar & Chip Resistant



OFFICE AND WAREHOUSE — 55 NELSON ST., MANCHESTER, N. H.

Tel. NA 2-5262

DOUGLAS E. PAGE

No. 1 Curtis Street
CLAREMONT, N. H.

General Contractor

for

ST. FRANCIS of ASSISI CHURCH

Windsor, Vermont

ST. FRANCIS OF ASSISI CHURCH

Windsor, Vermont

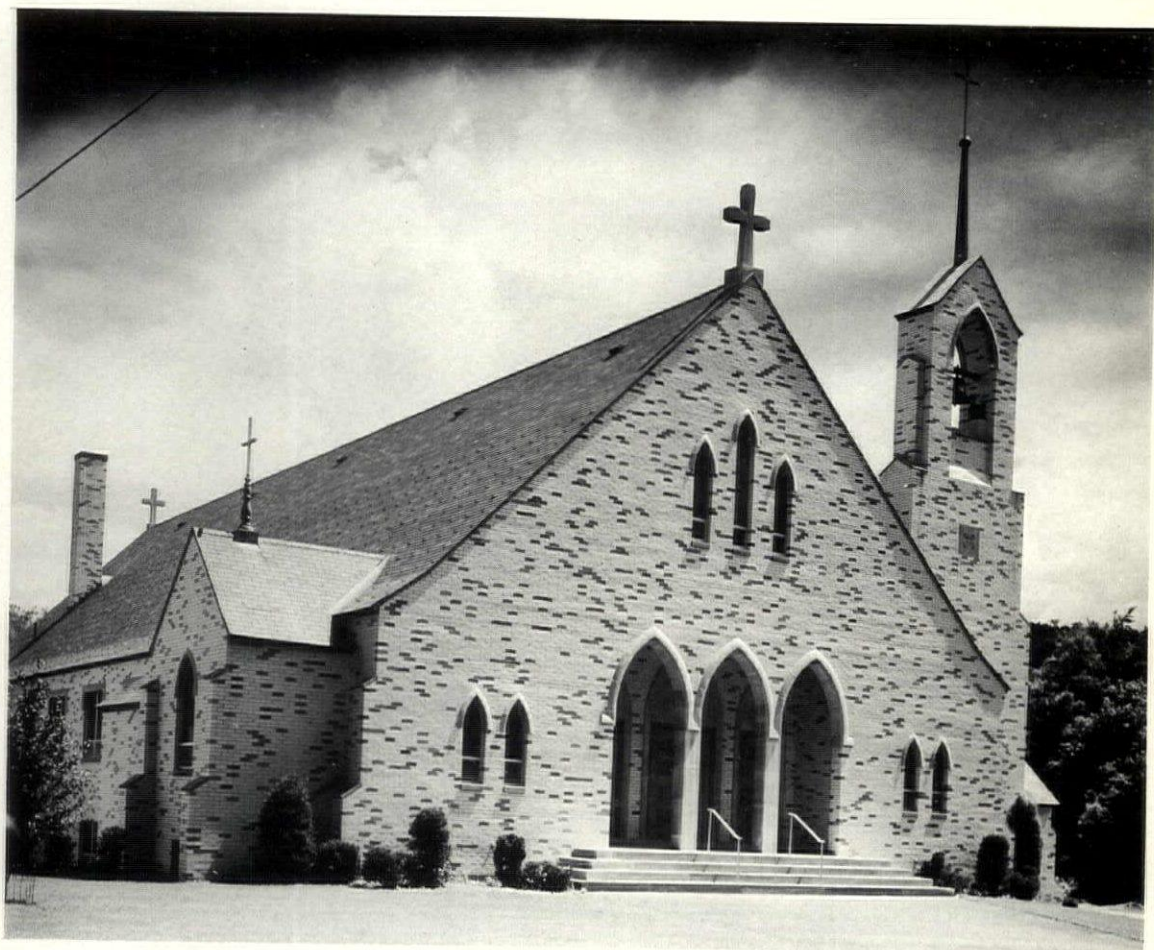


Photo By
Smith's Studio
Claremont, N. H.

INFANT JESUS CHURCH NASHUA, N. H.

1954

The Most Rev. Matthew F. Brady, D. D., Bishop of Manchester
Rev. Henri A. Blanchard, Pastor

GENERAL CONTRACTOR

Caron Construction Co. Inc., Manchester, N. H.

LIMESTONE

The Bloomington Limestone Corp.,
Bloomington, Indiana

GRANITE

H. E. Fletcher Co., West Chelmsford, Mass.

STRUCTURAL STEEL

Lyons Iron Works Inc., Manchester, N. H.

STEEL JOISTS

Fabricated Steel Products, Boston, Mass.

ALUMINUM SASH

George J. Kehas, Manchester, N. H.

ROOFING

Robert D. Forsyth & Sons, Haverhill, Mass.

PLASTERING

Frederick A. Conner, Lowell, Mass.

FLOORS

John H. Pray & Sons Co., Boston, Mass.

FIBRE TILE CEILINGS

Pitcher & Co., Cambridge, Mass.

MILL WORK

Tolle-Bickford Lumber Co. Inc., Nashua, N. H.

PAINTING

M. L. McDonald Co., Watertown, Mass.

SEPARATE CONTRACTS

PLUMBING, HEATING & VENTILATING

Powers & Mehegan Co., So. Boston, Mass.

ELECTRICAL

Keystone Electric Co., Manchester, N. H.

FINISH HARDWARE (LOCKWOOD)

Osgoods, Nashua, N. H.

BELL RINGING EQUIPMENT (VERDIN)

Joseph P. Duffy, Pittsford, Vermont

MAIN ALTAR

Gothic Craft, Northboro, Mass.

**Fabricated Steel
Products Company**

Agents for
Ceco Steel Products Corporation

STEEL JOISTS - ROOF DECK
STEEL SASH - ALUMINUM SASH
REINFORCING MESH
DUR-O-WAL

Warehouse and Office
115 Old Colony Avenue
Wollaston 70, Mass.
Mayflower 9-5218

General Contractor

for

Infant Jesus Church

NASHUA, N. H.

•

**Caron Construction
Co., Inc.**

General Contractors and Builders

161 Baker Street
MANCHESTER, N. H.

Phones: NA 2-4073 — 2-8475

Electrical Contractor

— for —

Infant Jesus Church

NASHUA, N. H.

Keystone Electric Co.

"You Phone Us — We Wire You"

36 Alsace St. Dial NA 2-9541
Manchester, N. H.

**Robert D. Forsyth
and Sons**

17 Cedar St. Dial 2-2933
HAVERHILL, MASS.

Roofing Contractor

for

Infant Jesus Church

NASHUA, N. H.

RIVERS and HENRY

O. A. Rivers

R. H. Henry

KEENE, NEW HAMPSHIRE

Rear 97 Main St.

Tel. 2044

Plumbing and Heating Contractors

GEO. E. TRUDEL CO.

341 Elm Street
MANCHESTER, N. H.

— Wholesalers —

PLUMBING — HEATING SUPPLIES

— Distributors of —



AMERICAN-Standard

We invite you to visit our display of
COLORED BATH ROOMS



The Color Coordinator System

The Color Coordinator System is a positive system of color selection, specification and duplication in Paints. It consists of 497 colors, selected to provide maximum coverage of all color possibilities. This vast array of colors is arranged in handy chart form for quick matching, selection and creation of color harmonies. It is also available in actually painted 3" x 5" removable samples. Martin-Senour maintains a library of these color samples. Orders for individual color samples are promptly handled.



MARTIN-SENOUR Nu-Hue Colors

To tint the colors in the Coordinator System requires a minimum of elements—only 16 basic tinting colors are needed. Never more than three colors are used, and they are always combined in equal parts! The name of each color is its mixing formula too—easy to specify—easy for the contractor to achieve. Famous Nu-Hue Liquid Tinting Colors combined with Nu-Hue whites deliver the desired color in finest quality paint!

Distributed by:

SEAMANS SUPPLY CO. Manchester, N. H.

INFANT JESUS CHURCH

Nashua, N. H.

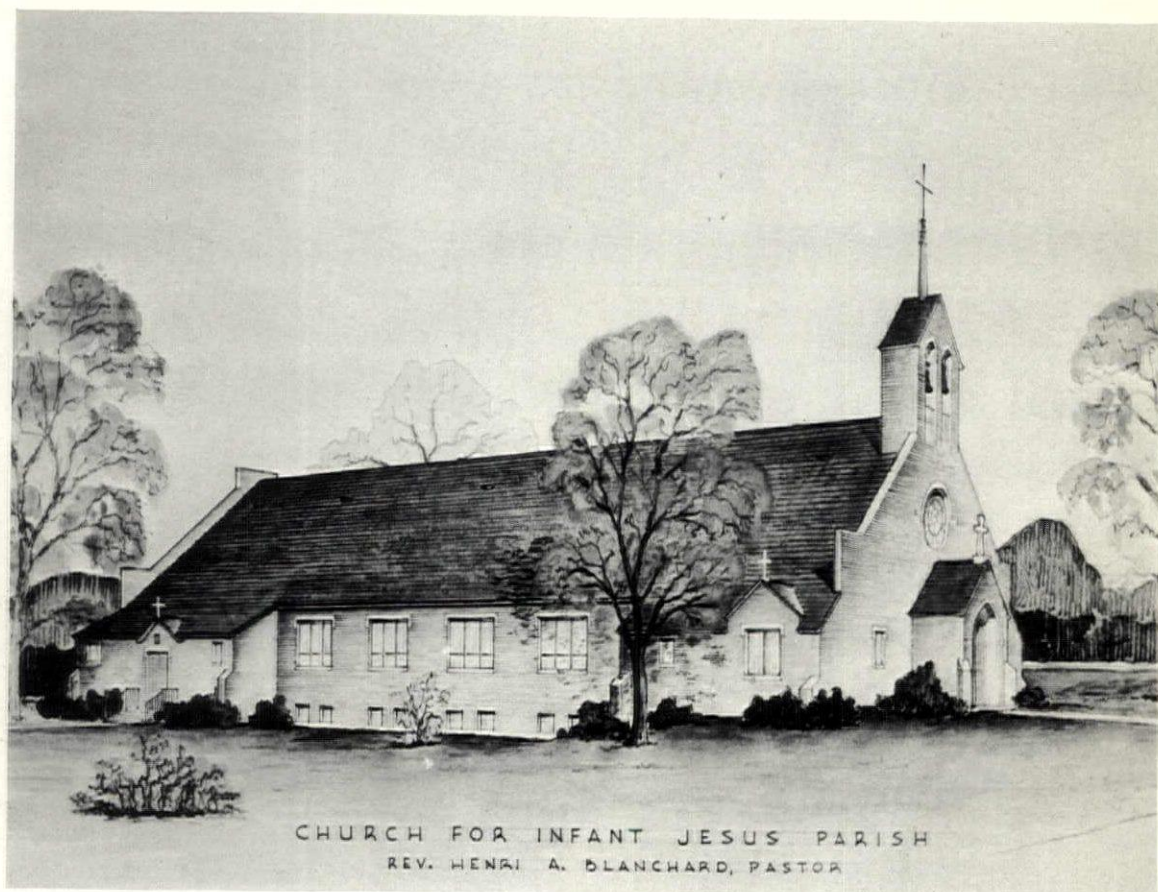


Photo By
Durette Photo Co.
Manchester, N. H.

CHAPEL OF THE HOLY SPIRIT SOUTH GARDNER, MASS.

1955

The Most Rev. John J. Wright, D. D., Bishop of Worcester

*Rt. Rev. Martin J. Tracy, V. F.
Pastor, Sacred Heart Parish
Gardner, Mass.*

GENERAL CONTRACTOR

LIMESTONE

STRUCTURAL STEEL

STEEL JOISTS

ALUMINUM SASH

ROOFING

PLASTERING

FLOORS

FIBRE TILE CEILINGS

MILL WORK

PAINTING

W. W. Granger Co., Shrewsbury, Mass.

New England Cut Stone Co. Inc.,
Dorchester, Mass.

Stafford Iron Works, Inc., Worcester, Mass.

Pittsfield Iron Works, Pittsfield, Mass.

George J. Kehas, Manchester, N. H.

A. L. Melanson Co. Inc., Gardner, Mass.

Joseph Tonelli & Son, Worcester, Mass.

Kesseli & Morse, Worcester, Mass.

Kesseli & Morse, Worcester, Mass.

Columbus & Berg Inc., Gardner, Mass.

H. Newton Marshal Co. Inc., Boston, Mass.

SEPARATE CONTRACTS

PLUMBING, HEATING &
VENTILATING

ELECTRICAL

FINISH HARDWARE
(LOCKWOOD)

BELL RINGING EQUIPMENT
(VERDIN)

PEWS, ALTARS, ETC.

STAGE CURTAINS

W. P. Wheelen Co., Gardner, Mass.

Janssens Electric Co., Gardner, Mass.

Waite Hardware Co., Worcester, Mass.

Joseph P. Duffy, Pittsford, Vermont

Gothic Craft, Northboro, Mass.

Capitol Theatre Supply Co., Boston, Mass.

**JOSEPH TONELLI
& Son Inc.**

Plastering Contractors

For

CHURCH OF THE HOLY SPIRIT

South Gardner, Mass.

EXTERIOR and INTERIOR STUCCO
and ACOUSTICAL PLASTER

15 Natick Street
WORCESTER 4, MASS.
Telephone PL 4-4986

Electrical Contractor

For

CHURCH OF THE HOLY SPIRIT

Janssens Electric Co.

ELECTRICAL CONTRACTORS —

— LIGHT, HEAT & POWER

55 Vernon Street
GARDNER, MASS.

CAPITOL THEATRE SUPPLY CO.

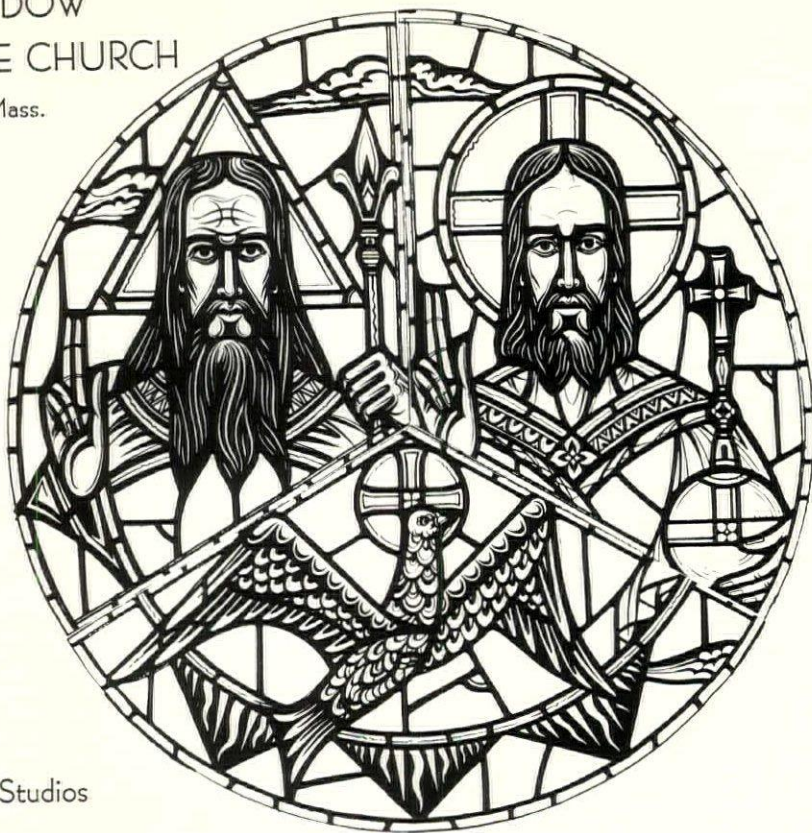
**28 - 30 Piedmont St.
BOSTON 16, MASS.**

**STAGE CURTAINS, RIGGING
AND LIGHTING**

16 MM and 35 MM Projection Equipment

AUDITORIUM SEATING

ROSE WINDOW
SAINT BONIFACE CHURCH
Lunenburg, Mass.



Designed by:-

Francesco Ruocco Studios
Haverhill, Mass.

ON THE LEVEL



At B. L. MAKEPEACE you'll find the most complete stock of quality engineering instruments in New England . . . famous Keuffel & Esser levels, transits, tapes, drafting instruments . . . in fact, *everything* for the engineer, draftsman and artist.

SPECIALISTS IN

● BLUEPRINTS ● PHOTOSTATS ● PLAN REPRODUCTIONS

The way you want them . . . when you want them!

INSTRUMENT REPAIR DEPARTMENT

CALL
Copley
7-2700

Completely equipped and staffed with skilled craftsmen to give you prompt, efficient service in repairing and rebuilding engineering instruments of all kinds.

New England's Largest Distributors of Drawing Materials, Art, Engineering and Architectural Supplies



B. L. MAKEPEACE Inc.
1266 BOYLSTON STREET • BOSTON

CHAPEL OF THE HOLY SPIRIT

South Gardner, Mass.



Photo By
Durette Photo Co.
Manchester, N. H.

PAUL HARVEY ALERTS CONTRACTORS TO IMPACT OF NEW HIGHWAY CONSTRUCTION

The awards were made at the monthly meeting of the association at the Manchester Country club. Vice-President Paul Harvey of Manchester, presided at the business meeting during which the awards were made.

Mr. Harvey alerted the contractors to the impact of the new highway construction program. He urged them to prepare now to expand their organizations to handle the substantial increased volume of construction which would follow an expanded highway program.

Mr. Harvey pointed out that in Massachusetts about \$100 million worth of new industrial construction followed shortly after the construction of Route 128 in that state.

"A similar expansion has been noted in the area of the New York Thruway," according to Vice President Harvey. "This highway program not only means an increase in highway construction volume, but will bring substantial economic benefits to the overall economy of New Hampshire and Vermont."

Eleven general contractors in New Hampshire and Vermont were recently cited for exceptional records in accident prevention in 1955.

According to E. David Swett, accident prevention chairman of the New England Regional Accident Prevention committee of the Associated General Contractors of America, "the New Hampshire-Vermont chapter of the Associated General Contractors placed third in a national competition during 1955.

Special awards were given to Frank W. Whitcomb of the Frank W. Whitcomb Construction company of North Walpole, and Parker H. Rice of Manchester Sand, Gravel and Cement company of Manchester, for low accident frequency in comparison with the high man-hours of exposure. Mr. Whitcomb's firm had a combined rate which was about one per cent of the national average, and Manchester Sand and Gravel had a rate equal to about two per cent.

Other general contractors awarded certificates for no lost time accidents in 1955 were W. M. Bisson & Son, Laconia; Daniels Construction Co., West Lebanon; Earle & Merry, Inc., Rutland, Vt.; Foster Builders, Concord; Landers & Griffin Co., Portsmouth; Robie Construction Co., Manchester; James Ross Associates, Concord and Weaver Brothers Construction Co., Concord.

ADDITIONS TO AIA STAFF

Three new appointments have been made to the headquarters staff. Joseph Watterson, a former president of the Long Island Society Chapter, has become Director of Publications. Theodore W. Dominick, a past president of The Washington Metropolitan Chapter has joined the Department of Education, Research and Professional Development. Betty Farwell is filling the new position of Slide Librarian in the AIA Library.

To relieve the overcrowding at headquarters, additional office space has been leased in nearby buildings. The treasurer's office and the convention staff will occupy this outside space until the recently authorized addition to the Administration Building is ready.

Producers Council Meeting

Producers' Council, Inc., 35th Annual Fall Meeting and Chapter Presidents' Conference, Wade Park Manor Hotel, Cleveland, Ohio, September 25 and 26, 1956.

EAST FRONT OF CAPITOL TO BE EXTENDED

Despite the tremendous hue and cry that included strong editorial protests in *Life Magazine*, the *New York Herald-Tribune* and many other publications, it appears that the proposal to extend the east front of the Capitol will go forward. AIA Executive Director Edmund R. Purves appeared last week at an executive session of the Senate Subcommittee on Appropriations and presented the Institute's position taken at the 1955 Convention opposing extension. This was the final opportunity to register a protest before a committee as the Congress already had authorized the project and the House of Representatives had appropriated funds.

As expected, the Senate Appropriations Committee gave a favorable report and the Senate approved the expenditure by a voice vote. The amount was included in the overall fiscal 1957 legislative appropriation.

VACOL DELUXE JALOUSIE DOORS

NEW *Vacol* FEATURES

THAT MAKE THIS
THE JALOUSIE
DOOR BUY
OF THE YEAR!

NEW HANDLE AND LOCK

Built like an automobile lock with push-button action—Completely prowler-proof.

NEW CONCEALED HINGES

Concealed stainless steel hinges with oilite bearings for lifetime service. Pre-installed and secured permanently to frame yet fully adjustable to most door variations.

NEW STAINLESS STEEL LEVER TYPE OPERATOR

Withstands abuse—easy to install—completely reversible.

... and while you're at it, CHECK the *Vacol*
ALUMINUM GLASS PANEL COMMERCIAL DOOR

Johnson's Venetian Blind Service

163 Douglas St. Dial 3-2622
Manchester, N. H.

New England Brick Company

1900

1956

"Sponsors of Beauty Brick"

Main Office and Warehouse
324 Rindge Avenue
Cambridge 40, Mass.

Gonic, N. H., Warehouse
Stock Includes

Quarry Tile, Persian Tapestry Brick,
Red and Full Range Romans

DERRYFIELD SUPPLY CO., INC.

EUGENE O. MANSEAU, Treas.

— WHOLESALE —

Plumbing - Heating - Mill Supplies

Granite and Franklin Streets

Manchester, N. H.



State Architects Guests of N.E.C.M.M.A.

Arnold Perreton, Concord, and Alex Majeski, Bedford, were guests of the N.E.C.M.M.A. at their annual New Hampshire meeting, July 17 at the Manchester Country Club.

Guest speaker was Sig Westby, Manager of the Housing, Farm and Products Bureau of the Portland Cement Association, Chicago, Ill. Assisted by Frank Smith of the Boston office of Portland Cement Association, he discussed the research and literature program of the association in so far as they related to the National Concrete Masonry Association and the Concrete Masonry Industry.

Arnold Perreton also presented data on Formbloc.

Some twenty-five members and guests representing thirteen producers in the six New England States attended the all day meeting.

The following companies were represented: Duracrete Block Co. Inc., Manchester; Massachusetts Cement Block Co., Medford, Mass.; Rappoli Block Co., Medford, Mass.; Camossee Block Co., Worcester, Mass.; Plasticrete Corp., Hampden, Conn.; Stiles Brick, North Haven, Conn.; Connecticut-Valley Block Co., Springfield, Mass.; Park Avenue Cement Block Company, Rhode Island and Ducharme Block Company, Chicopee Falls, Mass.

PASSENGER & FREIGHT ELEVATORS

ROTARY OILDRAULIC & ELECTRIC

RESIDENCE ELEVATORS & STAIRCARS

INDUSTRIAL - HYDRAULICS

Sales - Service - Repair

444 S. Main

Nashua

Tuxedo 2-9591



N. E. Contract Awards at All Time High

BOSTON—New England recorded contract awards for future construction during the first half of 1956 that reached an all-time high dollar volume for such a period, James H. Harding, district manager of F. W. Dodge Corporation, reports. The awards of \$967,329,000 were 18 percent above the comparable 1955 period, according to Dodge Reports totals.

The June 1956 contract awards amounted to \$187,529,000 to establish another record; the awards were 41 percent above June 1955.

Cumulative totals for the first six months for the individual categories compared with the like 1955 period show: total building at \$661,536,000, up 19 percent and heavy engineering at \$305,793,000, up 17 percent.

Individual June awards compared with June 1955 show: total building at \$112,777,000, up 12 percent; heavy engineering at \$74,752,000, up substantially.

Contract Awards for Future Construction in New Hampshire

BOSTON—Contract awards for future construction in New Hampshire during the first six months of 1956 reached \$44,070,000, James A. Harding, district manager of F. W. Dodge Corporation, construction news and marketing specialists, has announced. The total was four percent higher than the 1955 total, according to Dodge Reports.

June awards of \$8,715,000 were 10 percent above June 1955.

Individual categories for the first six months, compared with the like 1955 period show: total building at \$32,306,000, up three percent; heavy engineering at \$11,764,000, up six percent.

Individual June awards, compared with June 1955 show: total building at \$5,723,000, up 31 percent; heavy engineering at \$2,992,000, down 16 percent.

CAPITOL

PLUMBING & HEATING SUPPLY CO.



YOUNGSTOWN KITCHENS

ELJER ENAMEL

NATIONAL U. S.

KOVEN

Minneapolis

HONEYWELL

BARNES & JONES

TACO

BELL & GOSSETT

DOLE

SYMMONS

ELKAY

All Other Nationally Advertised Brands

DIAL CA 4-1901 or 4-1902

Ward Ave. Concord, New Hampshire

NOTICE

The corporation formerly known as Foster & Bamford, Inc. will be known henceforth as,

Foster Builders, Inc.

and will continue all efforts to give the utmost satisfaction to all its customers. There is NO change in personnel, policy or ownership of the company.

Foster Builders, Inc.

General building construction

Your National Homes Dealer

71 Clinton St., P. O. Box 266

Dial CA 4-1031

Concord, N. H.

Modern Masonry Conference

to be Held at Washington, D. C.

A group of distinguished architects, engineers and builders, masonry industry leaders and consultants, and building authorities in private industry and government will address the Modern Masonry Conference to be held by the Building Research Institute September 19 and 20 in Washington, D. C.

The Building Research Institute, a unit of the National Academy of Sciences, is conducting the conference under the sponsorship of the Allied Masonry Council. The 1½-day meeting will be held in the Hall of Flags, U. S. Chamber of Commerce Building, 1615 H Street, N. W.

The conference represents the first industry-wide discussion of masonry's place in contemporary architecture and the promise it holds for building of the future. Subjects slated for discussion in five major sessions embrace esthetics, technology, research and new product development, building cost and maintenance and an analysis of building types.

Building types to be discussed in detail include houses, multi-story buildings, hospitals, and schools. The session on research and new product development will mark the first disclosure by participating industry groups of new products and advances in brick and tile, natural stone, and marble.

The Allied Masonry Council is an alliance of the major producers, contractors, and labor forces of the building industry. Industry groups contributing to the conference include the Structural Clay Products Institute, Indiana Limestone Institute, Marble Institute of America, Building Stone Institute, Mason Contractors Association of America, and the Bricklayers, Masons & Plasters International Union of America.

The conference is open to all interested persons. Registration fee is \$15. The list of speakers and subjects is as follows:

BUILDING RESEARCH INSTITUTE MODERN MASONRY

Conference September 19-20, 1956

Program

September 19, 1956

9:45 a. m. Welcoming remarks,
Conference Chairman C. E. Silling,
C. E. Silling & Associates, Architects,
Charlestown, West Virginia.

10:00 a. m. SESSION 1.0

ARCHITECTURAL DESIGN

Session Chairman—John Knox Shear,
Editor-in-Chief, The Architectural
Record.

1.1 Esthetic Demands of Contemporary Architecture upon Masonry

Richard M. Bennett, Loebl, Schloss-
man & Bennett, Architects, Chicago,
Illinois.

1.2 Colors and Textures in Masonry

Joseph P. Moore, Moore & Company,
Stamford, Connecticut.

1.3 Modular Design with Masonry

Ralph Walker, Voorhees, Walker,
Smith & Smith, Architects, New York,
New York.

11:25 a. m. SESSION 2.0

TECHNOLOGY OF BUILDING WITH MASONRY

Session Chairman—John Knox Shear.

2.1 Reinforced Masonry Walls

Walter L. Dickey, The Bechtel Corp-
oration, San Francisco, California.

2.2 Cavity, Veneer, and Face-Bonded Walls

Walker O. Cain, McKim, Mead &
White, Architects, New York, New
York.

2:00 p. m. SESSION 3.0

RESEARCH AND NEW TECHNICAL DEVELOPMENTS

Session Chairman—Howard T. Fisher,
Howard T. Fisher & Associates,
Architects and Engineers, Chicago,
Illinois.

3.1 Thermal Performance of Masonry Walls

Clair B. Monk, Structural Clay Prod-

ucts Research Foundation, Geneva, Illinois.

3.2 Ceramic Veneer Panelizing

A. E. Barnes, Manager, Arch. Products Promotion, Gladding, McBean & Company, San Francisco, California.

3.3 Advances in Natural Stone

J. T. McKnight, Executive Vice President, The Indiana Limestone Institute, Bedford, Indiana.

3.4 Marble and Granite Research

A. T. Howe, Vice President, Vermont Marble Company, Proctor, Vermont.

3.5 Brick and Tile Research

Robert B. Taylor, Director, Structural Clay Products Research Foundation, Geneva, Illinois.

4:30 p. m. Adjournment.

September 20, 1956

9:00 a. m. SESSION 4.0

COSTS AND MAINTENANCE

Session Chairman—W. E. Reynolds
Consulting Engineer, Washington, D. C.

4.1 In-The-Wall Costs

M. J. Roach, Chief Engineer, Turner Construction Company, New York, New York.

4.2 Maintenance of Industrial Buildings

Alf M. Myhre, Specifications Engineer, E. I. duPont deNemours & Co., Inc., Wilmington, Delaware.

4.3 Maintenance of Public Buildings

Charles A. Peters Director, Building Management, Public Buildings Service, General Services Administration.

10:15 a. m. SESSION 5.0

BUILDING TYPE ANALYSES

Session Chairman—Walter A. Taylor, Director, Education and Research, American Institute of Architects, Washington, D. C.

5.1 Residential Design

S. Robert Anshen, Anshen & Allen, Architects, San Francisco, California.

5.2 Multi-Story Buildings

Robert Hastings, Smith, Hinchman, Grylls, Architects, Detroit, Michigan.

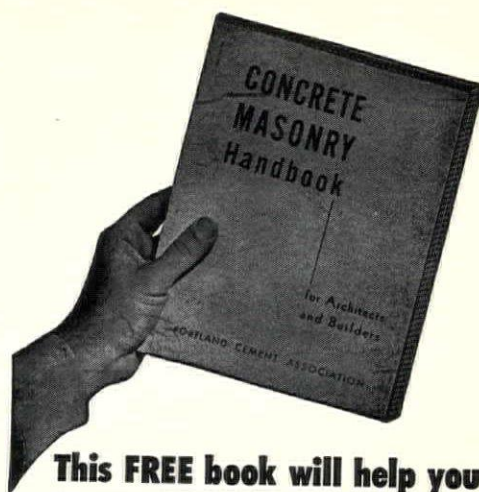
5.3 Hospitals

Vincent G. Kling, Architect, Philadelphia, Pennsylvania.

5.4 Schools

Lawrence B. Perkins, Perkins & Will, Architects, Chicago, Illinois.

12:30 p. m. Closing Remarks by Mr. Silling and Adjournment.



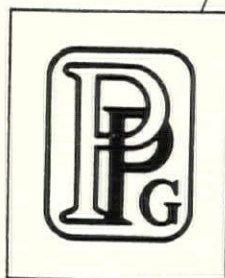
This FREE book will help you

The future of the trowel trades will be determined by the quality of work done today. This new 64-page handbook, replete with illustrations, detail drawings and tables, describes the latest recommended practices in quality concrete masonry construction. Send for free copy. Distributed only in U. S. and Canada.

PORTLAND CEMENT ASSOCIATION

20 Providence Street, Boston 16, Massachusetts

A national organization to improve and extend the uses of portland cement and concrete through scientific research and engineering field work



STANDS
FOR QUALITY

PAINTS · GLASS

in homes · offices · factories
institutions · schools · stores

PAINTS · GLASS · CHEMICALS · BRUSHES · PLASTICS

PITTSBURGH PLATE GLASS CO.
23 So. Commercial St., Manchester, N. H.

Thanks, Mr. Westcott

WESTCOTT AND MAPES
INCORPORATED
ARCHITECTS AND ENGINEERS

NEW HAVEN, CONN.

July 25, 1956

109 CHURCH STREET

Mr. Lawrence J. Moynihan, Publisher
New Hampshire Architect
P. O. Box 291
Concord, New Hampshire

Dear Mr. Moynihan:

Thank you for your letter of July 18th enclosing a copy of the May 1954 issue of the New Hampshire Architect which contains the schedule of fees adopted by the New Hampshire Chapter of the A. I. A. The information contained in the publication is very interesting.

I was also impressed by the publication itself and looked it over with considerable interest. I think such a publication would be helpful wherever there is a chapter.

Very truly yours,

WESTCOTT & MAPES, INCORPORATED
Harry R. Westcott
Harry R. Westcott, President

HRW:am

Architects

have long recognized the benefits derived from the timely, systematic interchange of information in the construction field. They find that this benefits their clients and all concerned . . . brings a wider range of bids . . . brings more complete news of new products, new trends, new techniques. And it saves much time that might otherwise be wasted on salesmen uninformed as to the architects' current interests.

This information, incorporated in Dodge Reports, is helpful to all firms in new construction. And it guides the *right* supplier's salesman to the *right* architect at the *right* time.

That's why for more than 65 years architects have found it good practice to provide their Dodge reporters with complete information about their work.

DODGE REPORTS

Construction News Service

31 St. James Avenue, Boston 16
119 West 40th Street, New York 18

NORTHERN

HEATING & PLUMBING CO., INC.

A. C. TROMBLY, President

Plumbing, Heating and Ventilation
Contractors - Engineers

Serving Northern New Hampshire in Domestic,
Commercial and Industrial Installations

17-21 Water St.

Laconia, N. H.

Tel. Laconia 706

STOKERS

OIL BURNERS

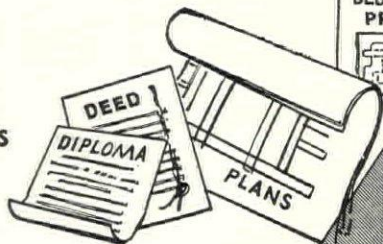
PHOTOSTATS-BLUELINE PRINTS

LEGAL COPIES OF ANYTHING

COPIES OF:
LETTERS, CHECKS, DOCUMENTS, DEEDS
COURT EXHIBITS, LICENSES, TITLES,
DISCHARGE PAPERS & MAPS

DON'T TAKE A CHANCE
ON ORDINARY PHOTO COPYING
CALL US
"WE ARE REPRODUCTION SPECIALISTS"

PHOTOSTATS
BLUEPRINTS
BLUELINE PRINTS



BUSINESS PHOTOGRAPHY
AUTO POSITIVES
24 HOUR SERVICE

"ONE TO A MILLION COPIES OF ANYTHING"

GEORGE C. BENJAMIN

92 MARKET STREET

DIAL 2-2273

MANCHESTER, N. H.

Serving the People of NEW HAMPSHIRE

John D. Betley,
Manchester

Horace G. Bradt,
Exeter

Dirsa and Lampron,
Manchester

W. Brooke Fleck,
Hanover

Alfred T. Granger Associates,
Hanover

Irving W. Hersey Associates,
Durham

John R. Holbrook Associates
Keene

Hudson and Ingram,
Hanover

Koehler and Isaak,
Manchester

Willis Littlefield,
Dover

Lyford and Magenau
Concord

Alexander Majeski,
Bedford

Edward Benton Miles,
Exeter

Arnold Perreton and Associates,
Concord

Carl E. Peterson,
Manchester

Prescott and Erickson
Laconia

Leo P. Provost,
Manchester

Norman P. Randlett,
Laconia

Tracy and Hildreth,
Nashua

William L. White,
Exeter

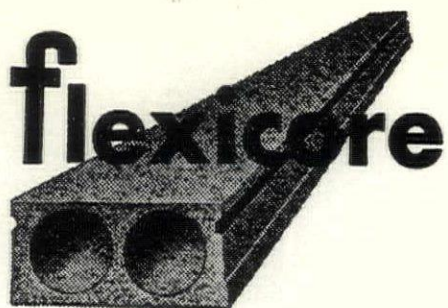
Walter Thomas Williams
Rochester

Maurice E. Witmer,
Portsmouth

Each of the above firms has one or more individuals in the

A. I. A.

DURASTONE FLEXICORE CORP.



**Long Span Precast Concrete
Floor and Roof Units**

Boston Office:

105 Robbins Road, Arlington, Mass.

Phones: MIssion 3-7841 and MIssion 8-0494

HARRY C. A. BEHR, Sales Engineer

LATEST DIVIDEND

**3¹/₄ % Per
Annum**

Accounts Started or Added to
on or before the 10th, earn a
Full Month's Dividend

Accounts insured to \$10,000
by the Federal Savings and
Loan Insurance Corporation.

Manchester
FEDERAL SAVINGS
AND LOAN ASSOCIATION
46 MARKET STREET, MANCHESTER, N. H.

Sanel Industrial and Equipment Supply

59 So. Main St. - Concord, N. H.

— We Now Stock —

**Chicago Pneumatic Compressors
and Air Tools, Timken Rock Bits,**

Air Hose, Suction Hose,

Black and Decker Electric Tools

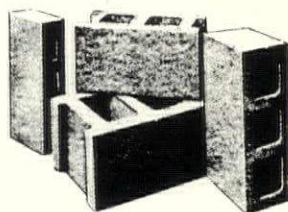
Skil Saws - Atlas Saw Benches

We stock machine bolts and cap screws,

All sizes to 12"

We can make any size bolt

TRY OUR PRICES and SERVICE



"MONADNOCK BLOCKS"

CONCRETE — CINDER

Made to Meet A.S.T.M. Requirements

Arthur Whitcomb, Inc.

725 Main St.

Keene, N. H.

Phone 110

N. H. Chapter A. I. A. Committees

For 1956

A—ADMINISTRATIVE COMMITTEE	Nicholas Isaak, G. C.
a Finance	Robert Snodgrass
b Jury of Fellows	Eric T. Huddleston
c Public Relations	Stephen P. Tracey
d Chapter Committee on Public Relations	Alexander J. Majeski
e By Laws	Maurice E. Witmer
f Board of Examiners	John D. Betley
g Chapter Committee on Membership	Willis E. Littlefield

B—PUBLIC & PROFESSIONAL RELATIONS	Arnold Perretton
a Architectural Competitions	Edward B. Miles
*b Urban Design & Housing	W. Brooke Fleck
c Architect & Government	Richard Koehler
*d Collab. with Design Professions	Margaret K. Hunter
*e Architectural Practice	John R. Holbrook
f Chapter Public Relations	Alexander J. Majeski
g N. H. Architect	Alexander J. Majeski
h Travelling Exhibit	Nicholas Isaak

C—MEMBERSHIP ACTIVITIES	Leo P. Provost
a Convention Committee	William L. White
b Honor Awards	Douglas G. Prescott
*c Chapter Affairs	Malcolm D. Hildreth

D—EDUCATION & RESEARCH	John A. Carter
a Awards & Scholarships	Horace G. Bradt
*b Education	Edgar H. Hunter
*c Preservation of Historic Buildings	William L. White
*d Research & Research Material	Joseph F. Lampron
e Hospital & Public Health	Stewart A. Lyford
*f School Buildings	Alfred T. Granger
*g AIA & Producers Council	Joseph F. Lampron
h AIA & AGC	Carl E. Peterson
*i AIA & Home Building Industry	Henry W. Erickson

*-Regional Members.

N. E. Pole and Wood Treating Corporation

Box Nine

Merrimack, New Hampshire

Pressure treated forest products to insure long service life and protection against rot, termites, etc. Lumber, poles, piling, posts treated with Creosote, Pentachlorophenol, and Acid Cupric Chromate.

Telephone HARRISON 4-3282

FOR MODERN SCHOOL DESIGN

BRUNSWICK HORN -

Gymnasium Folding Seating, Folding Partitions and Folding Stages for Gyms and Auditoriums, Folding Classroom Wardrobes.

TRUSCON STEEL SASH
ALUMINUM WINDOWS - ALL TYPES



CRAFTSMEN, INC.

Overhead Door Building, Tel. 707
MILFORD, N. H.

PALMER

PLUMBING SUPPLY COMPANY

Wholesalers

Plumbing - Heating - Mill Supplies

Distributors of

WEIL-McLAIN BOILERS

KOHLER ENAMELWARE

PETRO OIL BURNERS

ROCHESTER, LACONIA, KEENE, N. H.
PORTLAND, ME.

"Competent Engineering Service"

REFRIGERATION DISTRIBUTORS FOOD SERVICE CONSULTANTS

Complete Planning Service

For Markets and Food Stores
Special Industrial Refrigeration
Complete Air Conditioning
Hotel, Restaurant and
Institutional Kitchens,
Cafeterias, Dining Areas
Cocktail Lounges

HUMPHREYS, INC.

180 No. Main Street - Concord, N. H.

A Business Devoted To Those
Who Serve Food

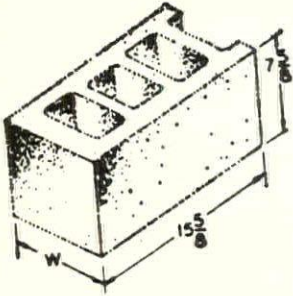
NEW HAMPSHIRE ARCHITECT

P. O. Box 291, Concord, N. H.

Sec. 34.66 P. L. & R.
U. S. POSTAGE
PAID
Concord, N. H.
PERMIT NO. 297

Frederick Gutheim A.I.A.
1741 New York Ave.
Washington 6 D.C.

Form 3547 Requested



CONCRETE, CINDER AND CATCH BASIN BLOCKS

DURACRETE

BLOCK CO., INC.

DIAL MAN. 5-6293 - 2-7011

Plant located at rear of
Manchester Sand & Gravel Co., Hooksett, N. H.

BUILD WITH BRICK and TILE

Face Brick— Flue Lining—
Sewer Pipe—
Facing Tile— Metal Specialties—

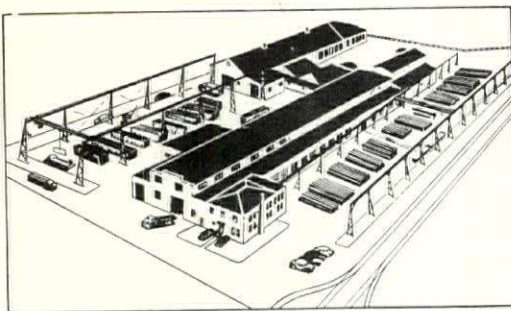
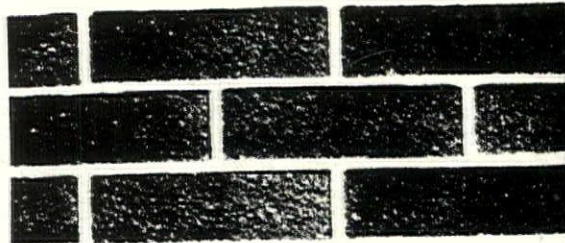


DENSMORE BRICK COMPANY

Brick Manufacturers

Lebanon,

New Hampshire



Aerial view of Vermont Structural Steel Corp.

Our large steel fabrication plant can provide you with structural steel, longspan trusses, ornamental iron and fabricated platework. Our warehouse is kept stocked with complete inventories of steel and steel products. Prompt delivery is our goal on all orders, large or small.

LET US
QUOTE ON YOUR
REQUIREMENTS

VERMONT STRUCTURAL STEEL CORP.

207 Flynn Ave.

Tel. 4-9844

Burlington, Vermont