

Lib

New Hampshire **ARCHITECT**



OFFICIAL PUBLICATION

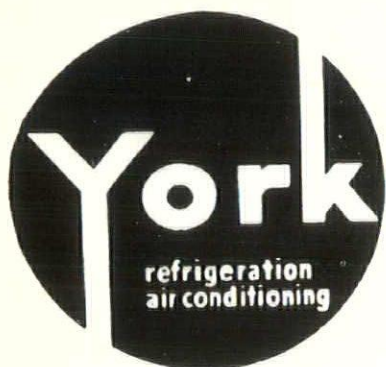
New Hampshire Chapter of the American Institute of Architects



MARCH
1956

20¢ COPY
\$2.00-YEAR

AIR CONDITIONING
Residential - Commercial - Industrial



Year-Round or Summer

Engineering Assistance Available For Your
Air Conditioning Problems

NEW HAMPSHIRE YORK CO.
254 Lincoln St. Manchester, N. H.

MANCHESTER SUPPLY COMPANY

Railroad Square
MANCHESTER, N. H.



Established 1890

Joseph W. Epply, Pres.
Wm. Hayes, Treas.

**Pioneer Wholesalers
of
Plumbing and Heating
Supplies**

MASURY ONE COAT PERFECTION *Odorless Alkyd* FLAT ENAMEL

ODORLESS • WASHABLE
EASY TO APPLY • FAST-DRYING
COVERS IN ONE COAT

STOP IN FOR A **FREE** COLOR CARD!



MASURY IS GOOD PAINT!

**Stan's Paint
and
Wallpaper Store**

125 Merrimack St. Dial 5-8861
MANCHESTER, N. H.

NEW ENGLAND INSULATION CO *Contractors - Distributors*

ASBESTOS MAGNESIA FIBERGLASS
KAYLO and CORK PIPE COVERINGS
ASBESTOS MILLBOARD & PAPER

Tel. Highlands 5-7800
839-845 Albany St. Boston 19, Mass
ARTHUR E. SWANSON, Manager



OFFICERS

President

NORMAN P. RANDLETT, Laconia

Vice-President

JOHN D. BETLEY, Manchester

Secretary

WALTER THOMAS WILLIAMS
Rochester

Treasurer

ROBERT SNODGRASS, Nashua

DIRECTORS

ARCHER HUDSON, Hanover

ALEXANDER MAJESKI, Bedford

MITCHELL P. DIRSA, Manchester

EDITOR

ALEXANDER MAJESKI, R. A.
Palomino Lane
Manchester, N. H.

PUBLISHER

LAWRENCE J. MOYNIHAN
P. O. Box 291
Concord, N. H.

New Hampshire ARCHITECT

VOL. 7

MARCH, 1956

NO. 8

TABLE OF CONTENTS

The President's Message	4
Honorary Memberships Conferred	5
N. E. Regional Council Meeting	6
Morancy Offers New Service to Architects	6
N. E. Awards Off to Record	7
Contract Awards for N. H. Down Slightly	9
Davison Building	10-12-13-14-15-16-17-18-19

OUR COVER

Davison Building — New Hampshire's Most
Modern Office and Commercial Building.

New Hampshire Architect is published monthly at 181 North Main Street, Concord, N. H., under the direction of the president and board of directors of the New Hampshire Chapter, American Institute of Architects, to promote the objectives and public relations of the chapter. Advertising rates furnished upon request.

The President's Message

We are approaching the time of year when an increase in new work is normally expected. For months owners have been studying and visiting buildings of the kind they are contemplating erecting. In the process they have been impressed by the general appearance of what they have seen, listened to what those who have been using the buildings have to say about the structure, their good and poor features, whether it would have been better to have spent a little more or whether adequate results could have been secured more economically, and what they would do differently if they were to build again.

Architects are familiar with the questions which alert owners and building committees ask them as result of the owners previous investigations. We too are constantly studying new work, not only in the local area but throughout the whole country. Design is not static and every well designed structure is, in some way, an improvement on existing prototypes, in one or more ways. Each new structure includes modifications of earlier buildings required by financing, terrain, by owners requirements and by the architect's ingenuity.

Two factors in determining design cause the greatest confusion; desired facilities and costs of other buildings generally similar to what the new one is to be.

In comparing buildings on a square or cubic foot basis, it is important that the same method of determining volumes or areas is used for all buildings under comparison; and whether type and quality of construction within the buildings are similar. Variations in construction can make very significant differences in estimates. Contracts for any parts of the building, such as painting, flooring, and lighting fixtures for example which are sometimes awarded separately from the general contract, should be noted and included in the cost of the structure. Not included as part of the cost of the building itself should be architectural and engineering fees, cost of land, paving, walks, landscaping, special foundation work such as piling, and movable furniture.

By comparing the foregoing characteristics, by deciding what features are to be common to the existing and proposed structures, and, not the least, reconciling what is wanted with what can be afforded, owners and architects will begin their relationship with mutual understanding.





—Photo by Union-Leader

Honorary Memberships Conferred by Randlett

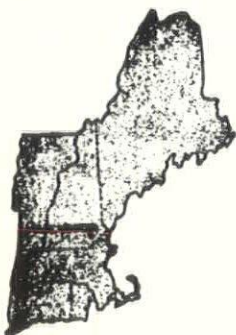
For the first time since its organization, New Hampshire Chapter, A. I. A. conferred honorary associate memberships on two New Hampshire men, outside of the profession.

Paul E. Farnum of Concord, chief of the Division of Administration of the New Hampshire State Board of Education, and Gordon V. Marshall of Manchester, New Hampshire representative of the F. W. Dodge Corporation, were recipients of the memberships and were

presented citations by Norman P. Randlett of Laconia, president of New Hampshire Chapter, A. I. A.

Presentation of the awards was made at the February meeting of the chapter at the Manchester Country Club. Architects and their guests numbering 75 attended the dinner meeting.

Prior to the dinner meeting, members of the executive committee of the chapter, outlined plans for the coming meetings for the year.



NEW HAMPSHIRE *Supply Company*



Wholesalers and Jobbers

40-48 COMMERCIAL ST.
149 PLEASANT ST.

MANCHESTER, N. H.
CLAREMONT, N. H.

PLUMBING & HEATING
SUPPLIES
INDUSTRIAL SUPPLIES
POWER TOOLS
PAINT & HARDWARE

TEL. 5-7881
TEL. 2030

New England Regional Council Holds Annual Meeting

The Agawam Hunt Club in Providence, R. I. was the scene of the Fourth Annual Meeting of the New England Regional Association of the A.I.A. on Saturday, March 10.

Regional Director Austin Mather of Bridgeport presided. He told the Delegates and their wives of recent activities of the Board of Directors and announced plans for the forthcoming National Convention to be held in Los Angeles.

Reports were heard from the Regional Chairmen of the "Vertical" Committees of the Institute and planning was initiated for the next Fall Seminar to be held probably next October somewhere in Northern New England. Subject of the Seminar will be "Education of the Practicing Architect."

Regional Director Mather stressed the importance of completing committee organization within the Chapters and utilizing the Regional Council for implementing their work.

Morancy Offers New Service to Architects

An estimating and take off service for the architects of New Hampshire has been undertaken by Melvin W. Morancy, 208 Academy Street, Laconia, it has been disclosed.

In a letter to the architects, Mr. Morancy explained that his new service would include an estimate at the preliminary phase of design after he had received a preliminary plan and an outline of the specifications from the architect.

Mr. Morancy points out that his service will give an architect a definite idea of the final cost in the early stages of planning.

A graduate civil engineer of New England College at Henniker, Mr. Morancy was employed by Hayden, Harding and Buchanan, consulting engineers of Boston. Before starting his new venture in Laconia, Mr. Morancy was employed by E. I. Dupont De Nemours as a construction engineer in Georgia and by the Corps of Engineers in San Francisco as an estimator.

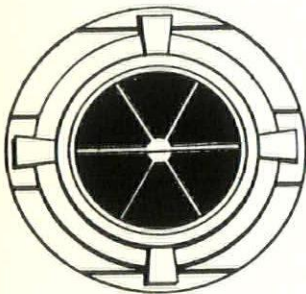
The Facts of Life—1956

SAID MY daughter, about to be married, "Mother, I love Alan very much but, frankly, I don't think I'm quite ready for marriage. There's so much I don't know."

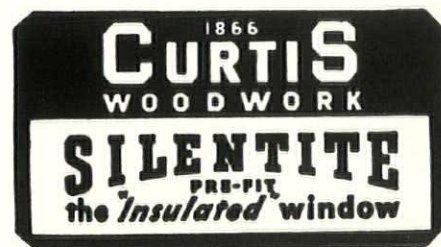
Taking this as a cue for a woman-to-woman discussion, I asked, "Well, shall we start off with the bees and the flowers?"

"Oh, Mother!" she exclaimed. "It's not sex I'm worried about. It's *cooking* that makes me feel so inadequate!"

—Contributed by Mrs. J. E.



A full circle window for halls, lavatories, vestibules and attics. May be used with any architectural style. Complete unit consists of frame, window, completely weather-stripped, and screen.



MUIR LUMBER CORP.

479 Hayward St.

Dial 4-4321

MANCHESTER, N. H.

New England Awards for 1956 Off to Record

BOSTON—New England started 1956 with the highest January yet in dollar volume of contract awards for future construction, according to Dodge Reports totals. January 1956 was up 37 percent over January 1955, at \$125,938,000, announced James A. Harding, New England manager for F. W. Dodge Corporation. This corresponded to a January 1956 gain of 25 percent in dollar volume over January 1955 for the 37 eastern states as a whole.

Individual January 1956 awards in the three basic Dodge construction categories compared with January 1955 shows: Non-residential, up 46 percent, at \$42,127,000; residential, down 7 percent, at \$34,577,000; heavy engineering, up 94 percent, at \$49,234,000.

C. R. SWANEY CO.

Nash Engineering Co.

Vulcan Radiator Co.

Economy Pumps, Inc.

H. A. Thrush & Co.

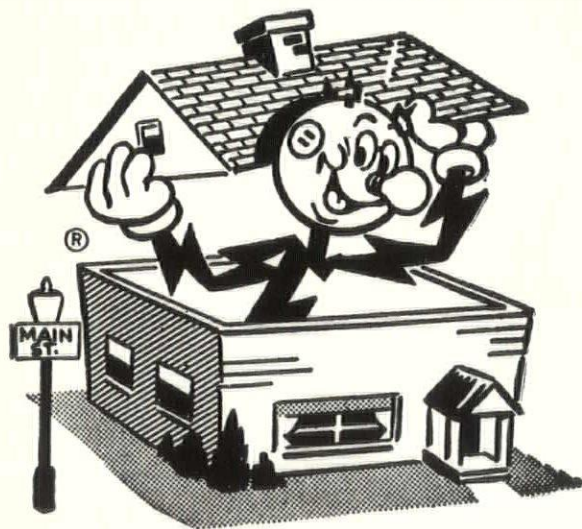
Pumps for Vacuum Heating,
Condensation, Boiler Feed, Sewage,
Hot and Cold Water and Process

Trimline Baseboard and

Commercial Fin Tube Radiation

335 Newbury Street - Boston 15, Mass.

KENmore 6-5613



UNDER THE ROOF

of any building that's planned today are some items comparatively low in percentage of cost . . . but which are of utmost importance to the occupants.

The provision for my services is among these — whether it's school, church, factory or home . . . please plan for ADEQUATE WIRING, so I can do my work, not only today, but in the future, too!

Reddy Kilowatt

Yaur Electric Servant

**PUBLIC SERVICE COMPANY OF NEW HAMPSHIRE
and NEW HAMPSHIRE ELECTRIC COMPANY**

Serving 153,000 cutomers with dependable, low-cost ELECTRICITY

A ROOF BY THERRIEN IS A GOOD ROOF

TEL. 3-6193

199 HAYWARD STREET

MANCHESTER, N. H.

NEW HAMPSHIRE ARCHITECT SCHEDULE 1956

<i>Architect</i>	<i>Date Due</i>
Tracy & Hildreth	April 1, 1956
Dirsa & Lampron	May 1, 1956
Lyford & Magenau	June 1, 1956
Prescott & Erickson	July 1, 1956
Alexander J. Majeski	August 1, 1956
William L. White	September 1, 1956
Leo P. Provost	October 1, 1956
Alfred T. Granger Associates	November 1, 1956
Norman P. Randlett	December 1, 1956

PASSENGER & FREIGHT ELEVATORS

ROTARY OILDRAULIC & ELECTRIC

RESIDENCE ELEVATORS & STAIRCARS

INDUSTRIAL - HYDRAULICS



Sales - Service - Repair

444 S. Main

Nashua

Tuxedo 2-9591

Contract Awards for New Hampshire Down Slightly

BOSTON—January contract awards for future construction in New Hampshire were 8 percent below January 1955 in dollar volume, according to Dodge Reports totals. The January 1956 figure was at \$5,246,000, stated James A. Harding, New England manager for F. W. Dodge Corporation.

Awards in the three basic construction categories for January 1956 compared with January 1955 show: Non-residential, down 15 percent, at \$3,600,000; residential, down 21 percent, at \$870,000; heavy engineering, up 113 percent, at \$776,000.

"Tommy," said his Uncle John, "do you have a girl?"

"Gosh, no," shouted the 10-year-old and ran off to his baseball game.

The little girl next door smiled wisely at Uncle John and said, "They're always the last ones to know." — *The Union*

Cobe and Foster, Inc.

156 Bridge St.

Dial 2-9642

Manchester, N. H.

REGISTERED
PROFESSIONAL ENGINEERS



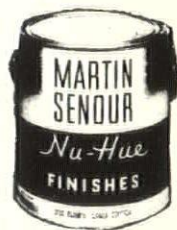
Air Conditioning and Heating
and
Refrigeration and Supply Jobbers

WHOLESALE ONLY



The Color Coordinator System

The Color Coordinator System is a positive system of color selection, specification and duplication in Paints. It consists of 497 colors, selected to provide maximum coverage of all color possibilities. This vast array of colors is arranged in handy chart form for quick matching, selection and creation of color harmonies. It is also available in actually painted 3" x 5" removable samples. Martin-Senour maintains a library of these color samples. Orders for individual color samples are promptly handled.



MARTIN-SENOUR Nu-Hue Colors

To tint the colors in the Coordinator System requires a minimum of elements—only 16 basic tinting colors are needed. Never more than three colors are used, and they are always combined in equal parts! The name of each color is its mixing formula too—easy to specify—easy for the contractor to achieve. Famous Nu-Hue Liquid Tinting Colors combined with Nu-Hue whites deliver the desired color in finest quality paint!

Distributed by:

SEAMANS SUPPLY CO. Manchester, N. H.

Johnson's Venetian Blind Service

163 Douglas St. Dial 3-2622
Manchester, N. H.

Furnishers of —
Levelor Built Venetian Blinds
for
DAVISON BUILDING

We are agents for —
Kirsch Vertical Blinds
Beauty Line Fold Doors
Kane Mfg. Co. Products

Including —
Metal Screens, Screen Doors, Aluminum
Combination Doors, Aluminum Combina-
tion Windows, Porch Enclosures, Light-
proof Shades, Jalousies.

UNITED

Plate & Window Glass Company, Inc.
78-80 Douglas St. - Manchester, N. H.

Aluminum Entrances
Plate Glass Front
Interior Mirrors

for

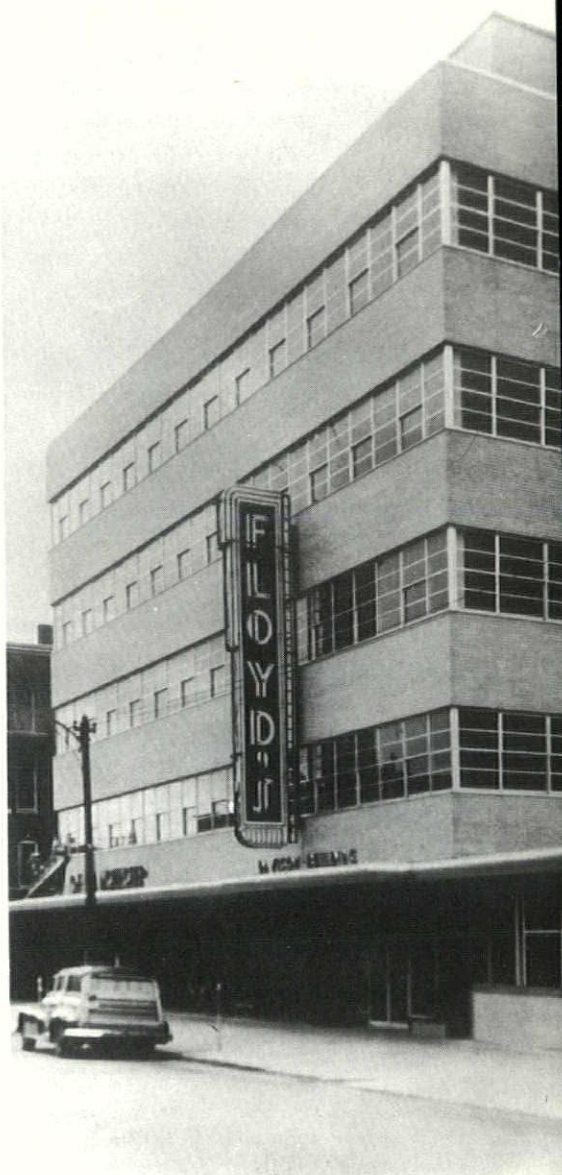
DAVISON BUILDING

GLASS

plate
auto
mirrors
structural
glazing
processing
thermopanes

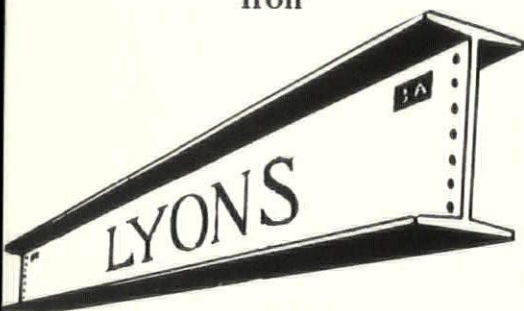
FRONTS

sash
sill
awnings
entrances
signs



Steel Structures Designed
and Fabricated

Architectural and Ornamental
Iron



"Steel when you want it"

LYONS IRON WORKS, INC.

62 MAPLE ST. MANCHESTER, N. H.

DIAL 5-6975

Dutch Boy —THE NAME TO
GO BUY—FOR EVERY PAINT JOB

First choice of professional painters — first choice with home owners — that's *Dutch Boy*. There's a *Dutch Boy* finish specially blended for every painting need, inside or outside your home, and you can depend on it for long-lasting beauty. Choose yours today at —



PAINT DEPARTMENT
Main Store — Street Floor
BUILDERS' PAINT DEPARTMENT
Opposite Main Store
(Rear of State Theatre)

EXCLUSIVE DEALER
J. J. MOREAU & SON, INC
MANCHESTER, N. H.
Dial 4-4311

specialists



in
'tailor-made'
**FIDELITY,
SURETY
and
BURGLARY**
coverages.

Experienced
Representatives
in all
principal cities.

Also writing: Reinsurances •
Fire and Inland Marine • Casualty
and Liability Lines • Accident and
Health • Specialized Lines and
Excess Covers

DAVISON BUILDING

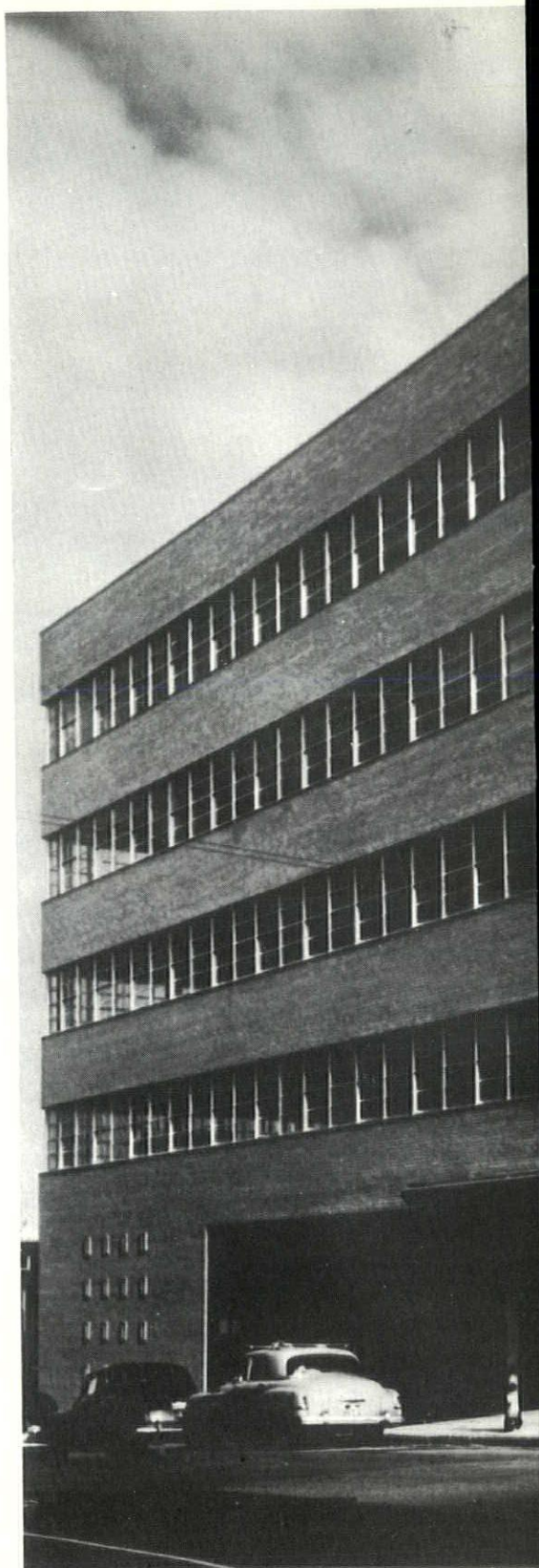
MANCHESTER, N. H.



Koehler and Isaak, A.I.A.
Manchester
Architects



Davison Construction Co., Inc.
Manchester
Owners and Builders





New Hampshire's Most Modern Office and Commercial Building

Parking Problem for Davison Building Solved by Owners

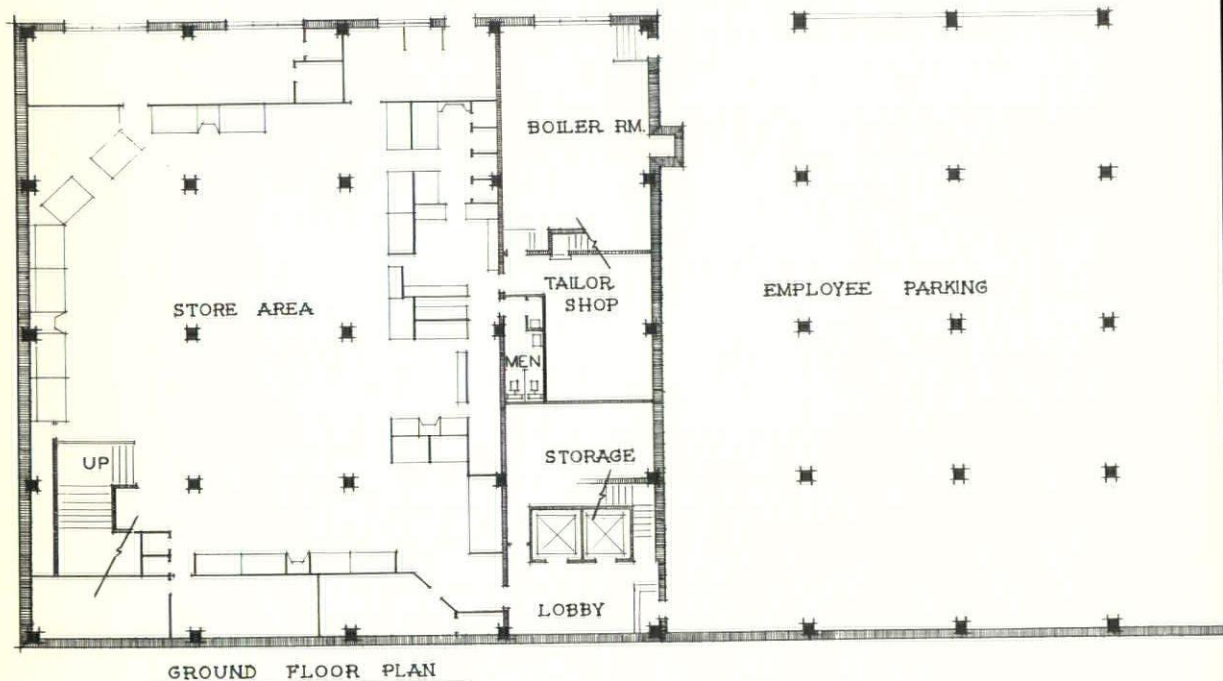
This is the most modern office and commercial building erected to date in the business district of Manchester. As in all city districts it faced a problem of parking space to serve the business people within the building, and for their clients and customers as well. Also, as in all commercial structures speed of construction was highly important in order to meet lease requirements.

The building was finished within a few short months, and this was accomplished to a great extent by use of a rigid steel frame which allowed for erection independently of the walls. The walls, therefore, became very light, non bearing curtains making possible the use of continuous fenestration, thereby providing ample light for all offices.

The upper floors contain offices, the basement and first floor are occupied by a retail store. The building is air conditioned and vertical transportation is handled by two self-operating elevators.

The parking problem was solved, in fact, by the owner, who set aside 50% of the building plot for parking. The slope of the land made possible the use of two parking decks—each with a capacity of approximately 28 cars. The lower deck is reserved for the occupants, and the upper deck is made available to the public. This capacity seems adequate for the stop and shop type of traffic, and while not a new idea, it does accomplish a closer in-

(Continued on Page 18)



GROUND FLOOR PLAN



Pride of Davison Craftsmen

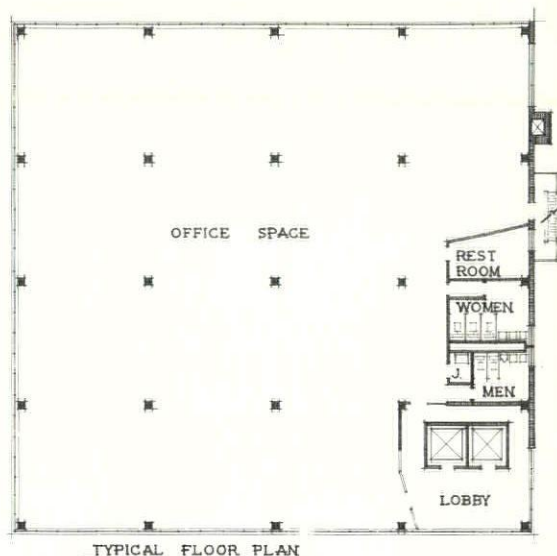
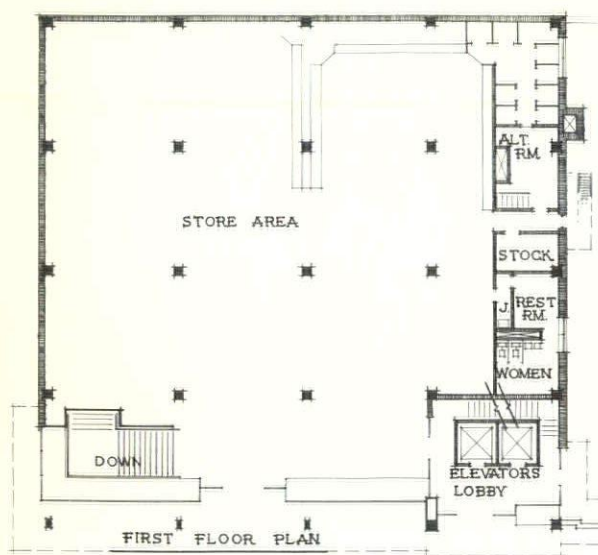
DAVISON BUILDING

Owned and Built by

Davison

CONSTRUCTION COMPANY, INC.

MANCHESTER, N. H.



**Robert D. Forsyth
and Sons**

17 Cedar St. Dial 2-2933
HAVERHILL, MASS.

Roofing Contractor
for
DAVISON BUILDING

Lathing and Plastering

— at —

DAVISON BUILDING

— by —

**P. H. McGranahan
Company, Inc.**

555 Valley St. Manchester, N. H.
Dial 2-9373

LATHING

by

ECONOMY SYSTEM OF LATHING
Manchester, N. H.



ELECTRICAL
CONTRACTOR

Electrical Contractor

for

DAVISON BUILDING

**DALLAIRE BUILDING
SUPPLY CORP.**

501-509 Main St.

Dial 2-0916

Manchester, N. H.

It was our privilege to furnish

LOCKWOOD FINISH HARDWARE

for the new

DAVISON BUILDING

THE DARK RED GRANITE
in the

DAVISON BUILDING

was furnished by us

**IF YOU HAVE SOME PARTICULAR
COLOR SCHEME WHERE YOU
COULD USE GRANITE,
POSSIBLY WE COULD
HELP YOU**

THE JOHN SWENSON GRANITE CO., INC.

Concord, N. H.

Tel. CA 5-2783

Parking Problem —

(Continued from Page 14)

tegration of building and automobile. Perhaps this is one way that city establishments can halt the exodus of business to the outskirts.

List of sub-contractors:

Venetian Blinds — Johnson Venetian Blind Service, Manchester.

Painting—B. N. Perry & Son, Inc., Manchester.

Finish Hardware — Dallaire Building Supply, Manchester.

Plastering — P. H. McGranahan Co., Inc., Manchester.

Aluminum and Glass Work — United Plate & Window Glass Co., Inc., Manchester.

Electrical—John J. Reilly, Manchester.

Glazing — Pittsburg Plate Glass Co., Manchester.

Roofing & Sheetmetal—Robert D. Forsyth & Sons, Haverhill, Mass.

Bituminous Concrete—Manchester Sand & Gravel & Cement Co., Inc., Manchester.

Steel Erectors—J. Scanlon & Co., Inc., Manchester.

Aluminum Sash, Bar Joists, Reinf. Steel — Fabricated Steel Products Co., Wollaston, Mass.

Plumbing and Sprinkler System—R. C. Peabody Co., Inc., Manchester.

Steel — Lyons Iron Works, Inc., Manchester.

Heating & Air Conditioning — John Ventura Co., Lawrence, Mass.

Plywood Paneling—Hermsdorf Fixture Mfg. Co., Inc., Manchester.

Toilet Partitions—George Kehas, Manchester.

Granite — The John Swenson Granite Co., Inc., Concord.

Face Brick — New England Brick Co. Cambridge, Mass.

Roof Deck — Atlantic Roofing & Skylight Works, Boston, Mass.

Fabricated Steel Products Company

Agents for

Ceco Steel Products Corporation

**STEEL JOISTS - ROOF DECK
STEEL SASH - ALUMINUM SASH
REINFORCING MESH
DUR-O-WAL**

Warehouse and Office

115 Old Colony Avenue

Wollaston 70, Mass.

Mayflower 9-5218

Q-FLOORING

providing maximum
electrical availability

furnished

by

**Atlantic Roofing
&
Skylight Works**

Cor. Hampden and Howard Streets
BOSTON, MASS.

Distributors and Erectors of
H. H. Robertson Company
Building Products

The DAVISON BUILDING
afforded us the largest installation in the state
— of —
SOLEX HEAT ABSORBING GLASS



We also furnished the
Art Glass Partitions
for the interior

— STANDS
FOR QUALITY

PAINTS · GLASS

in homes · offices · factories
institutions · schools · stores

PAINTS · GLASS · CHEMICALS · BRUSHES · PLASTICS

PITTSBURGH PLATE GLASS CO.
23 So. Commercial St., Manchester, N. H.

D. N. Terry & Son

Painters and Decorators

Painting Contractor
for
DAVISON BUILDING

Telephone 2-3861

OFFICE: 571 CHESTNUT STREET
MANCHESTER, NEW HAMPSHIRE

STEEL

for

DAVISON BUILDING

ERECTED

— by —

J. SCANLON & CO.,

Incorporated

1727 South Willow St.

Manchester, N. H.

Phone 2-3324

R. C. Peabody Co., Inc.

Plumbing ● Heating ● Sprinkler

Contractors

Sales Installation Service

720 Union St.

Dial 2-0824

Manchester, N. H.

Plumbing and Sprinkler System
for

DAVISON BUILDING

INSTALLED BY US

Serving the People of NEW HAMPSHIRE

John D. Betley,
Manchester

Horace G. Bradt,
Exeter

Dirsa and Lampron,
Manchester

Alfred T. Granger Associates,
Hanover

Irving W. Hersey Associates,
Durham

John R. Holbrook Associates
Keene

Hudson and Ingram,
Hanover

Koehler and Isaak,
Manchester

Willis Littlefield,
Dover

Lyford and Magenau
Concord

Alexander Majeski,
Bedford

Edward Benton Miles,
Exeter

Arnold Perreton and Associates,
Concord

Carl E. Peterson,
Manchester

Prescott and Erickson
Laconia

Leo P. Provost,
Manchester

Norman P. Randlett,
Laconia

Tracy and Hildreth,
Nashua

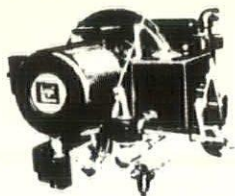
William L. White,
Exeter

Walter Thomas Williams
Rochester

Maurice E. Witmer,
Portsmouth

Each of the above firms has one or more individuals in the

A. I. A.



D. H. McClarty Co., Inc.
Heating and Plumbing

**JOHNSON
OIL BURNERS**

THE FINEST IN HEAVY OIL
BURNING EQUIPMENT

57 McCauley St. Manchester, N. H.
Phone 5-8693

LATEST DIVIDEND

**3¹/₄ % Per
Annum**

Accounts Started or Added to
on or before the 10th, earn a
Full Month's Dividend

Accounts insured to \$10,000
by the Federal Savings and
Loan Insurance Corporation.

Manchester
FEDERAL SAVINGS
AND LOAN ASSOCIATION
48 MARKET STREET, MANCHESTER, N. H.

**Sanel Industrial and
Equipment Supply**

59 So. Main St. - Concord, N. H.

— We Now Stock —

Chicago Pneumatic Compressors
and Air Tools, Timken Rock Bits,

Air Hose, Suction Hose,

Black and Decker Electric Tools

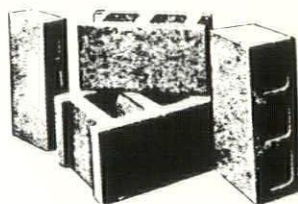
Skil Saws - Atlas Saw Benches

we stock machine bolts and cap screws,

All sizes to 12"

We can make any size bolt

TRY OUR PRICES and SERVICE



"MONADNOCK BLOCKS"

CONCRETE — CINDER

Made to Meet A.S.T.M. Requirements

Arthur Whitcomb, Inc.

725 Main St.

Keene, N. H.

Phone 110

N. H. Chapter A. I. A. Committees

For 1956

A—ADMINISTRATIVE COMMITTEE Nicholas Isaak, G. C.

- a Finance Robert Snodgrass
 - b Jury of Fellows Eric T. Huddleston
 - c Public Relations Stephen P. Tracey
 - d Chapter Committee on Public Relations Alexander J. Majeski
 - e By Laws Maurice E. Witmer
 - f Board of Examiners John D. Betley
 - g Chapter Committee on Membership Willis E. Littlefield
-

B—PUBLIC & PROFESSIONAL RELATIONS Arnold Perreton

- a Architectural Competitions Edward B. Miles
 - *b Urban Design & Housing W. Brooke Fleck
 - c Architect & Government Richard Koehler
 - *d Collab. with Design Professions Margaret K. Hunter
 - *e Architectural Practice John R. Holbrook
 - f Chapter Public Relations Alexander J. Majeski
 - g N. H. Architect Alexander J. Majeski
 - h Travelling Exhibit Nicholas Isaak
-

C—MEMBERSHIP ACTIVITIES Leo P. Provost

- a Convention Committee William L. White
 - b Honor Awards Douglas G. Prescott
 - *c Chapter Affairs Malcolm D. Hildreth
-

D—EDUCATION & RESEARCH John A. Carter

- a Awards & Scholarships Horace G. Bradt
 - *b Education Edgar H. Hunter
 - *c Preservation of Historic Buildings William L. White
 - *d Research & Research Material Joseph F. Lampron
 - e Hospital & Public Health Stewart A. Lyford
 - *f School Buildings Alfred T. Granger
 - *g AIA & Producers Council Joseph F. Lampron
 - h AIA & AGC Carl E. Peterson
 - *i AIA & Home Building Industry Henry W. Erickson
-

*-Regional Members.

Better Builders Buy Indian Head

Doors
Windows
Finish
Builders' Hardware

See New England
Through
INDIAN HEAD WINDOWS

INDIAN HEAD
MILLWORK
Corporation



90 East Hollis Street Nashua, N. H.

TUxedo 3-5537

FOR MODERN SCHOOL DESIGN BRUNSWICK HORN -

Gymnasium Folding Seating, Folding
Partitions and Folding Stages for
Gyms and Auditoriums, Folding Class-
room Wardrobes.

TRUSCON STEEL SASH
ALUMINUM WINDOWS - ALL TYPES



CRAFTSMEN, INC.

Overhead Door Building, Tel. 707
MILFORD, N. H.

PALMER

PLUMBING SUPPLY COMPANY

Wholesalers

Plumbing - Heating - Mill Supplies

Distributors of

VEIL-McLAIN BOILERS

KOHLER ENAMELWARE

PETRO OIL BURNERS

ROCHESTER, LACONIA, KEENE, N. H.
PORTLAND, ME.

"Competent Engineering Service"

REFRIGERATION DISTRIBUTORS FOOD SERVICE CONSULTANTS

Complete Planning Service

For Markets and Food Stores
Special Industrial Refrigeration
Complete Air Conditioning
Hotel, Restaurant and
Institutional Kitchens,
Cafeterias, Dining Areas
Cocktail Lounges

HUMPHREYS, INC.

180 No. Main Street - Concord, N. H.

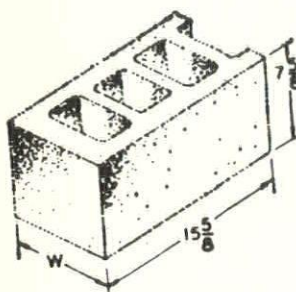
A Business Devoted To Those
Who Serve Food

NEW HAMPSHIRE ARCHITECT

181 N. Main St., Concord, N. H.

Frederick Gutheim A.I.A.
1741 New York Ave.
Washington 6 D.C.

Form 3547 Requested



CONCRETE, CINDER AND CATCH BASIN BLOCKS

DURACRETE

BLOCK CO., INC.

DIAL MAN. 5-6293 - 2-7011

Plant located at rear of
Manchester Sand & Gravel Co., Hooksett, N. H.

Sec. 34.66 P. L. & R.
U. S. POSTAGE
PAID
Concord, N. H.
PERMIT NO. 297

BUILD WITH BRICK and TILE

Face Brick— Flue Lining—
Facing Tile— Sewer Pipe— Metal Specia

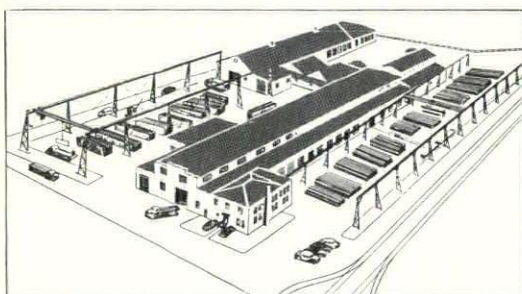
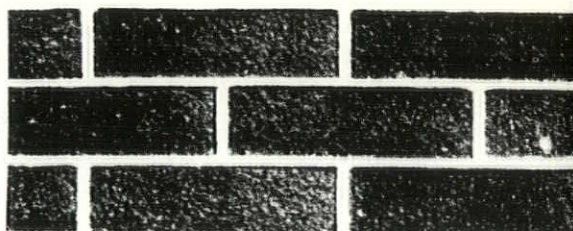


DENSMORE BRICK COMPANY

Brick Manufacturers

Lebanon,

New Hampshire



Aerial view of Vermont Structural Steel Corp.

Our large steel fabrication plant can provide you with structural steel, longspan trusses, ornamental iron and fabricated platework. Our warehouse is kept stocked with complete inventories of steel and steel products. Prompt delivery is our goal on all orders, large or small.

LET US
QUOTE ON YOUR
REQUIREMENTS

VERMONT STRUCTURAL STEEL CORP.

207 Flynn Ave.

Tel. 4-9844

Burlington, Vermont