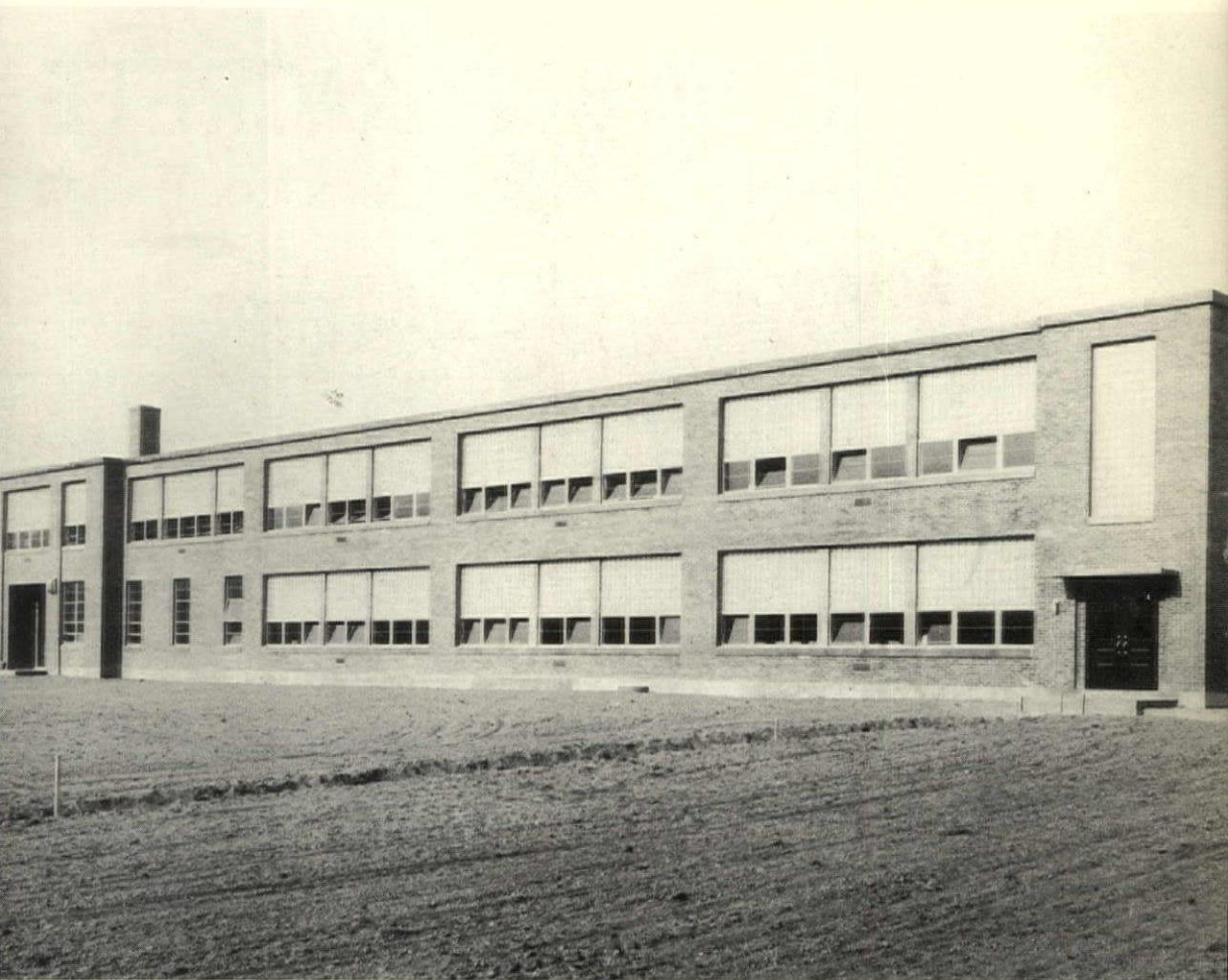


DECEMBER

1952

# *New Hampshire* ARCHITECT



OFFICIAL PUBLICATION

*New Hampshire Chapter of the American Institute of Architects*



20¢ COPY  
\$2.00-YEAR

# CURTIS STYLE BOOK!



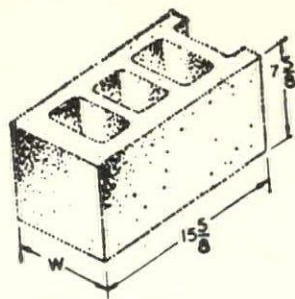
*Step-saving Curtis  
kitchens, too, are  
shown in our Curtis  
Style Book!*



*Beautify your new  
or remodeled home  
with Curtis Silentite  
windows. See them  
in our Style Book.*



MANCHESTER, NEW HAMPSHIRE



CONCRETE, CINDER AND CATCH BASIN BLOCKS

# DURACRETE

BLOCK CO., INC.

DIAL MAN. 5-6293

Plant located at rear of  
Manchester Sand & Gravel Co., Hooksett, N. H.



THEY WON'T EVEN HEAR ME,  
THE FLOOR UNDERLAYMENT IS

## PLASWOOD

manufactured by

### SOUHEGAN MILLS, INC.

WILTON, NEW HAMPSHIRE

## M. J. MURPHY & SONS, INC.

Manchester - Dover - Portsmouth

FLOORING

ROOFING

AIR CONDITIONING

SHEETMETAL WORK

HEATING

WALL TILE

Phone:

Manchester 4-4593

Portsmouth 3590

Dover 169

"Craftsmanship famous throughout

New England"



# New Hampshire ARCHITECT

## OFFICERS

### President

EUGENE F. MAGENAU, Concord

### Vice-President

LEO P. PROVOST, Manchester

### Secretary

WILLIAM L. WHITE, Exeter

### Treasurer

ROBERT SNODGRASS, Nashua

## DIRECTORS

RICHARD KOEHLER, Manchester

MALCOLM D. HILDRETH, Nashua

JOHN D. BETLEY, Manchester

## EDITOR

ALEXANDER MAJESKI, R. A.  
Palomino Lane  
Manchester, N. H.

## PUBLISHER

LAWRENCE J. MOYNIHAN  
Concord, N. H.

New Hampshire Architect is published monthly at 206 Patriot Building, Concord, N. H., under the direction of the president and board of directors of the New Hampshire Chapter, American Institute of Architects, to promote the objectives and public relations of the chapter. Advertising rates furnished upon request.

VOL. 4

DECEMBER, 1952

NO. 5

## TABLE OF CONTENTS

President Speaks .....	4
Eliel Saarinen Work Shown Early Next Year .....	4
Architextopics .....	5
Architects Meet at Winnisquam House .....	5
Public Relations .....	6
Clearing of U. S. A. F. Base Site .....	6
Hartford Memorial School .....	8-9-10-11
New Hampshire Winter Meeting .....	12
Public Works Officials Confer With Architects .....	13



## ON THE COVER

The Hartford Memorial School, White River Junction, Vermont.

Hudson & Ingram, Architects.

# THE PRESIDENT SPEAKS

The Christmas season is here again and everyone is glad. No other annual event is anticipated so eagerly for so long, and no other is so well remembered afterwards with so much pleasure. Particularly this year there seems to be a general feeling of optimism and hope, that we may be on the threshold of a period of business prosperity, honesty in government, holding on to social and scientific gains, and advancement towards peace.

It is easy to let such pleasant thoughts delude us into a coma-like state, induced by the satisfactory accomplishment of our daily routine. Avoidance of extra duties of all kinds can be rationalized on the basis that we have been "too busy." We coast too easily into a "laissez-faire" attitude about problems other than immediate or personal ones.

Last month's Chapter meeting was a good illustration. So many members with important committee assignments were so busy with private affairs that almost nothing could be accomplished, aside from enjoying the fine program put on by the Armstrong Cork Company.

However, Christmas is always followed by, another event that fills us with hope: New Years Day. We will purge ourselves of the bad habits that prevented us from realizing the full potential with which we started out a year ago. We will make just a few slight changes this year, and this time, we promise ourselves, *no backsliding*.

Because the beginning of a new year is just such a period of high resolve. I am hopeful that the immediate goal which we have set for ourselves will be accomplished by the time of our next meeting in February. I refer to adoption of a Chapter Schedule of Fees.

Why should we have an official Schedule of Fees? For one thing, ours is one of the few A. I. A. Chapters, if not the only one in the country which does not have one. There

are other and better reasons, such as the following:

(1) Our clients and the public in general should know about what they are expected to pay for services that meet recognized standards, as they do in other professions.

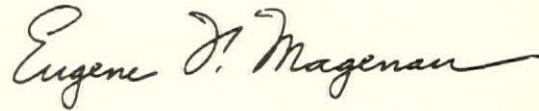
(2) Architects from other states should know about what they can expect to get for similar services.

(3) The old standard 6% commission is either too high or too low for some types and sizes of jobs which are common today.

(4) A recognized schedule of recommended fees will tend to eliminate competition on the basis of fees, which is possibly the worst basis of any for the selection of an architect.

(5) Standards of performance on the part of architects will tend to be raised.

Thus we hope in these and in other ways to produce better Architecture in New Hampshire in 1953.



---

## Eliel Saarinen Work To Be Shown Early Next Year

Of interest to Architects—at the Currier Gallery of Art. A memorial exhibition of the work of Eliel Saarinen.

This record of Eliel Saarinen's life work was first shown at the Museum of the Cranbrook Academy of Art. Miss Eva Ingersoll Gatling, Curator, planned the entire show as well as this traveling selection of twenty-three panels and twenty-three framed original drawings, many of which show important work that was never executed. An illustrated catalogue is available. On tour.

To be shown at the gallery from January 18, 1953, to February 15, 1953.

Also, on Sunday afternoon, January 19, 1953, two films to be shown on the work of Frank Lloyd Wright.

## ARCHITEXTOPICS

By *Richard Koehler, A.I.A.*

It is strange that very few architects can approach the timbre, the depth or the soul in their creations that the musicians are able to. The uninformed needs no code of grammar to vibrate to the throb of good music and he needs no code to sense an atmosphere or to be a Being in superb architecture. There is no "corn" to the atmosphere that a "hausfrau" can create in "a hole in the wall," by the mere faculty of caring enough to lift the drab to the lovely. I've seen women wear with unmatched grace long-out-of-fashion gowns, while others never approach this indefinable something with the latest gadgets—What are these things which owe no allegiance to race, wealth or social standing? Character? Culture? Is this the stuff of real substance? Have we, the average, the mediocre, no substance! no character! no culture to express!?! Maybe we lean too heavily on that age-old excuse: "If we only had the time!"

To us, whether we be architects, teachers, housewives or tin-knockers, I say there is much to be done, much brightening to do, much inspiration and much love to express. The sincerity of a dirty-faced little boy to be the best marble-shooter and his undying loyalty to his ambition would put to shame our endless excuses for non-production! We, the little people, must look to ourselves and see if we can produce one thing that will lift a heavy heart, and a monotonous existence just one notch up this very long hill. Lord! Life at times is a burden and thanks to him who lifts me from my foolish worries, whether it be by word, art or music. So there you sit Mr. Architect, with the inspiration of many to follow at your finger-tips, will you really concentrate? really create something of substance?

In a world so timid of emotional expression, we as architects, wives and teachers must ex-

press the warmth of things beautiful, not so much in defiance of the platonic, but in spite of it. I am not the least impressed with claims that the expression come alone from either the architects, engineers, builders, housewives, teachers or others—the important thing is that we care enough to express.

Remember shuffling home over frost-bitten field grass and there before you was a newly frozen puddle, you laid full length to peek under the crystal roof, you had to hold your breath or it would melt away, the curved blades dusted with frost were endless colonnades; Frank Lloyd Wright, with all his wizardry could never have matched the design.

No, you haven't completely forgotten those days, but have you forgotten how to build fantasy and atmosphere into your architecture?

---

### Architects Meet at Winnisquam House

The New Hampshire Chapter of the American Institute of Architects held its Fall business meeting at the Winnisquam House, Tilton, N. H., November 20, 1952. The program included committee meetings, dinner, Chapter business meeting and illustrated talks by Mr. James Struck of Armstrong Cork Company and Miss Barbara Standish, Interior Decorator of Concord who met with wives and guests of the Architects for an informal discussion on interior decoration.

An exhibit of products manufactured by the Armstrong Cork Company attracted the attention of all.

Reports from the Membership Committee, John Betley, Chairman and Public Relation and Information Committee, Maurice E. Witmer, Chairmen were presented at the business session of the meeting.



## PUBLIC RELATIONS

The 84th Convention of the American Institute of Architects has finally taken action on a subject which has interested the profession for a long time. That is advertising. As we well know, the rules of The Institute prohibit personal advertising. There has long been a need, however, for bringing the work of the Architect before the public in such manner as to get it to recognize the need for Architect's services in the planning of all buildings. The way our economy is organized, advertising is the pump which keeps goods and services circulating. Unless we are willing to compete with others for a part of the consumer's dollar, we will be left by the wayside.

The Institute has engaged a professional public relations counsel who will prepare all press releases and who will generally advise the Institute in matters involving public relations. It is further proposed to produce a moving picture showing how Architects operate and to lend copies to schools, clubs and other interested organizations. Thus the public should become acquainted with what an Architect is and what he does, so that it will cease to get its information about Architecture and Architects from sources such as the "Fountain Head" and other ridiculous stories in which the Architect is portrayed as an artistic crackpot instead of a man accustomed to the handling of large affairs and the careful expenditure of other people's money.

This campaign is to continue for three years at which time it is to be re-appraised. I am confident that at the end of the three-year trial period it will receive the enthusiastic endorsement of the Convention of 1955 and a definite mandate for its continuation. I am sure that our membership will welcome this program and the news that the public relations of the Institute are to be handled by experts not amateurs.

This action should further the organizational drive of the Institute because it will benefit the younger Architect more than the older one in awakening the public to the desirability of employing Architects for all but the smallest structures.

---

## Clearing of USAF Base Site To Start Soon

The contract for clearing the 900-acre site for the Portsmouth Air Force base was awarded Friday, November 21, to a Rhode Island firm.

The Corps of Engineers' office in the hub announced Friday afternoon that Campanella and Cardi of Hills Grove, R. I., had been given the contract for clearing the areas where the runway, parking aprons and taxi ways of the huge new jet bomber base will be constructed. The firm was low bidder at \$109,600. Actual clearing is expected to start shortly.



---

: *When You Think of Building . . . Think of an Architect* :

---

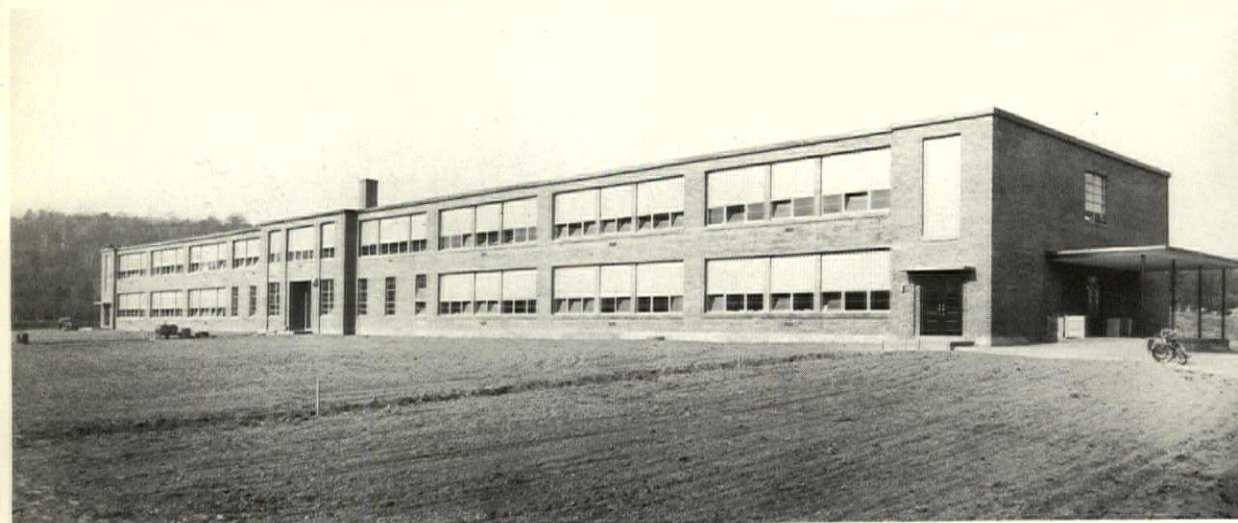
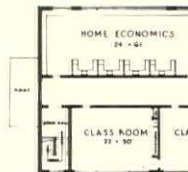


*New Hampshire*  
**ARCHITECT**

# ARCHITECTS of the MONTH

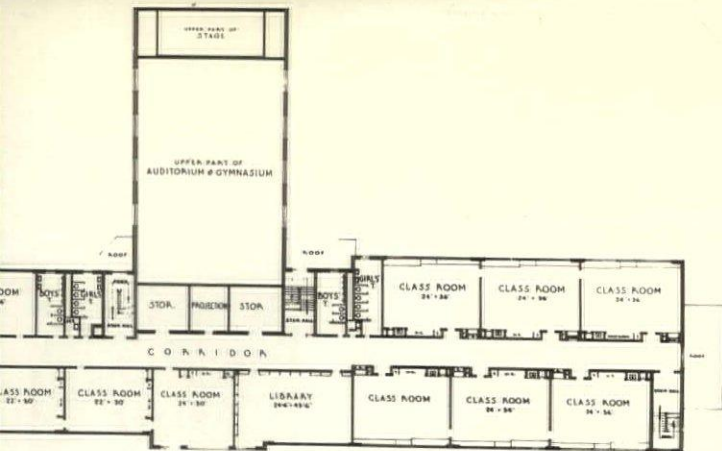
ARCHER E. HUDSON, A.I.A.  
GORDON R. INGRAM, A.I.A.

## HARTFORD MEMORIAL SCHOOL White River Junction, Vermont

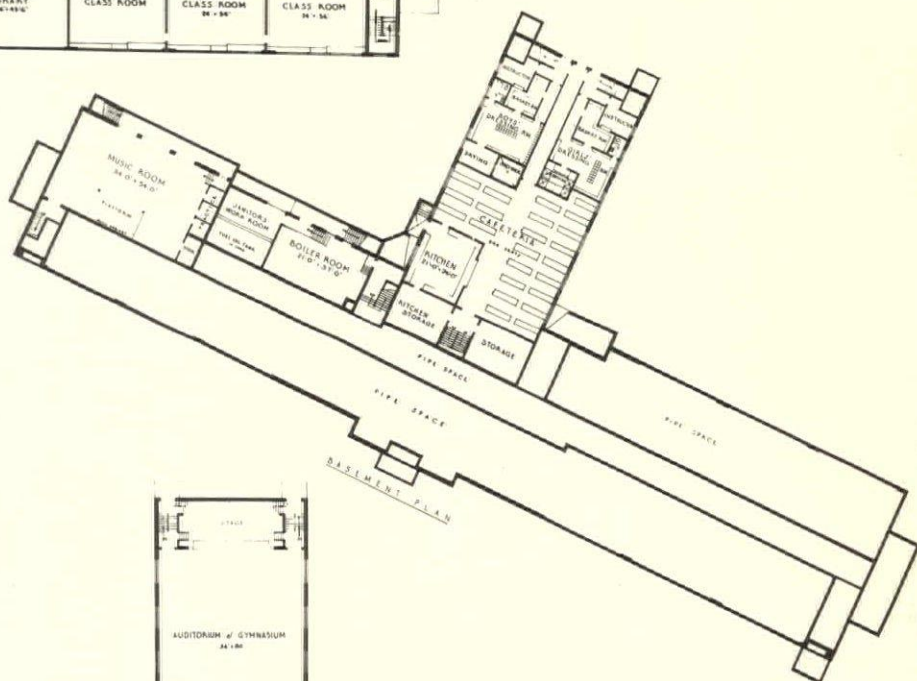


*Archer E. Hudson, born in Harris, R. I. Educated at Warwick High School and Rhode Island School of Design. Studied under Lalou and Haffner at A. E. F. Art Training Center at Bellevue, France, in 1919. Worked for Stone, Carpenter & Sheldon, Architects, Providence, Rhode Island. Two years in Army in World War I. Then Hutchins & French, Architects; Richie, Parsons & Taylor, Architects; Mowl & Rand, Architects, all of Boston and Larson & Wells, Hanover, New Hampshire. Member of the following firms: Larson & Wells; Wells & Hudson; Wells, Hudson & Granger and the present firm, Hudson & Ingram since 1942.*

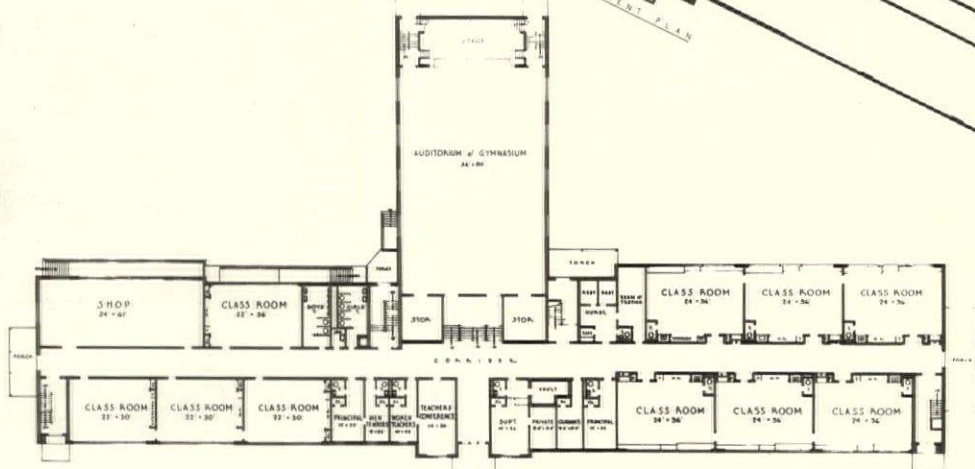




SECOND FLOOR PLAN



BASMENT PLAN



FIRST FLOOR PLAN



*Gordon R. Ingram, born in Hanover, N. H. Educated at Hanover High School, Dartmouth College, and Harvard University School of Architecture. Employed by Wells & Hudson and Wells, Hudson & Granger before forming present partnership in 1942.*

(Story on Page 10)

# New Hartford Memorial School

The new Hartford Memorial School recently completed in White River Junction, Vermont, is a combination elementary and junior high school. It was built to replace, an old elementary school building condemned as unsafe and to relieve a very crowded condition that existed in the Hartford High School.

The school building is built on high, flat land to the north of the village on which is located the high school athletic field with enough additional land for a future senior high school building. The boys' and girls' shower and locker room areas can be used in conjunction with a summer playground program.



Home Economic Room

## CONSTRUCTION:

Foundations are of concrete with cinder block walls and partitions. Exterior walls are faced with 4" of brick. Corridor walls and toilets have a dado of facing tile. Stair hall walls are of buff brick. In general, all floors are of concrete covered with asphalt tile. The gymnasium floor is of wood; toilets,



Third Grade Room

showers, dressing rooms, etc. have ceramic tile floors. All room and corridor ceilings have "Acousti-Celotex" tile. Windows in front of building have directional glass block panels with steel vision strip glazed with double glass. The rear windows are steel projected windows. Windows in gymnasium are of glass block. Roof covering is tar and gravel. All interior walls and partitions are of cinder block and painted.

The heating system is a steam system with a unit ventilator and a convactor radiator in each classroom controlled by individual room thermostats. All lighting is incandescent using the ring type fixtures in all classrooms.

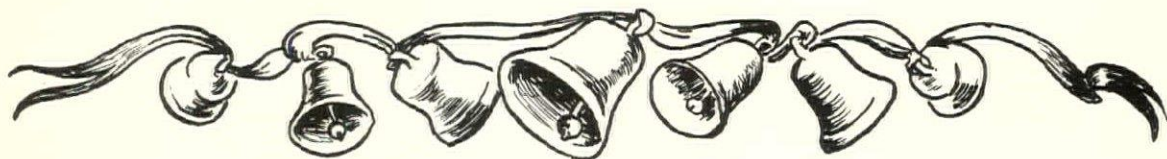
The cost of this building was \$607,650.00.

The equipment cost was 50,000.00.

General Contractor—H. P. Cummings Construction Co., Woodsville, N. H.

Below are the names and addresses of the sub-contractors used on the Hartford Memorial School.

Plumbing & Heating—The Randall Co., Inc., Rutland, Vt.



Electric—S. H. Richards & Son, Bellows Falls, Vt.

Millwork—Delano Mill Co., 75 St. James St., Portland 4, Me.

Cinder Blocks—Dempsey's Concrete Products, 100 River St., Hudson Falls, N. Y.

Brick & Tile—Densmore Brick Co., Lebanon, N. H.

Blackboards & Tackboards—J. L. Hammett Co., Kendall Sq., Cambridge 42, Mass.

Toilet Partitions—Geo. J. Kehas, P. O. Box 576, Manchester, N. H.

Asphalt Tile—Kesseli & Morse Co., 242 Canterbury St., Worcester, Mass.

Wardrobes—Lambert-Sawyer Co., Little Bldg., Boston 16, Mass.

Ceramic Tile—Lee Tile Co., Inc., 1374-1376 Columbus Ave., Boston 20.

Mt. Door Buck & Kal. Doors—Philipp Mfg. Co., Eastampton 1, Mass.

Glass & Glazing Glass Blocks—Pittsburgh Plate Glass Co., 40 Albany St., Springfield, Mass.

Finish Hardware—N. C. Powers Co., White River Junction, Vermont.

Painting—Hugh Ramsden, 295 Maple St., Burlington, Vt.

Structural Steel Misc. Iron, Reinf. Rods—Vt. Structural Steel Corp., Burlington, Vt.

Steel Erection—H. R. Wood, Ridge Rd., Fairfield, Me.

Acoustic Ceilings—Bodar Co., Rutland.

---

## Architects' Traveling Exhibition

---

CONCORD CITY LIBRARY  
DECEMBER 1 TO 31

---

Concord Public Library during the  
month of December



For every

COMMERCIAL OR RESIDENTIAL USE

—o—

CONVENIENCE, ECONOMY, SAFETY

—o—

The OVERHEAD DOOR will improve, modernize and give years of uninterrupted utility and service to any type of building.

—o—

Manual, Dashboard Radio or  
Electrically Operated.

Direct Factory Distributors for New Hampshire

**OVERHEAD DOOR SALES  
COMPANY OF  
NEW HAMPSHIRE**

Sales, Service and Installation

Phone 707

Milford, N. H.

## DERRYFIELD SUPPLY CO., INC.

EUGENE O. MANSEAU, Treas.

— WHOLESALERS —

Plumbing - Heating - Mill Supplies

Granite and Franklin Streets

Manchester, N. H.

**N. H. CHAPTER  
WINTER MEETING**

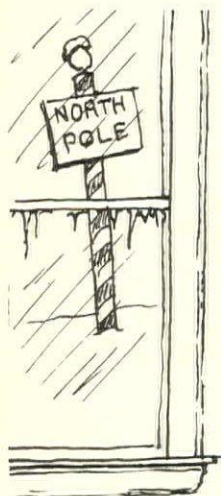
**FEBRUARY 19, 1953**

**CONCORD, N. H.**

**AN ADVERTISEMENT**

in the  
**NEW HAMPSHIRE  
ARCHITECT**

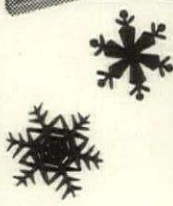
is your best bet.



**CENTRAL HEATING, THEN HEATILATORS, AND  
NOW TELEVISION ANTENNAS, THIS JOB GETS  
HARDER EVERY YEAR!**



EVEN  
SANTA  
CAN  
GIVE  
IMMEDIATE  
DELIVERY  
ON THE



**MALT-A-MATIC**  
the window unit with  
REMOVABLE SASH

**D'Arcy Company**  
DOVER, NEW HAMPSHIRE



**This Home Will Last**

So will your's - If it's built  
by a **RELIABLE** Contractor !  
YOUR reliable contractor is -

**FOSTER & BAMFORD, Inc.**

- |             |              |
|-------------|--------------|
| CONTRACTORS | NEW BUILDING |
| BUILDERS    | REMODELING   |
| ENGINEERS   | SURVEYS      |

ESTIMATES SUBMITTED  
PHONE - CONCORD 196  
18 N. MAIN ST. CONCORD, N. H.

Heating - Ventilating - Plumbing  
Engineering Service

**ORR & ROLFE CO.**

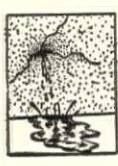
New Hampshire's Largest Heating, Ventilating and  
Plumbing Contractors

**OIL BURNER SERVICE**

Tel. 4485 - 4486

Bridge St. Concord, N. H.

Estimates Given.



**BASEMENT  
LEAKS**

Seal With  
**Waterplug**

**The Thoro System**

**N. H. DISTRIBUTOR**

**Duracrete Block Co., Inc.**

Manchester, N. H.

Tel. 5-6293

Write or call for complete information

# PUBLIC WORKS OFFICIALS

## CONFER WITH ARCHITECTS

On November 13, Chapter President Magenau, Secretary White and Director Hildreth paid a visit to the Department of Public Works and Highways, at the State House Annex in Concord. Commissioner Merrill had delegated architect John Engel, engineer George Weymouth and Deputy Commissioner John Morton to receive them.

Purpose of the visit was to inform ourselves of just what has been going on in the Department, so the Chapter could form an intelligent opinion whether to support or oppose P. W. & H in the Legislature and elsewhere.

The architects were cordially received and every topic was freely and openly discussed. Some of the findings were as follows:

One major activity of P. W. & H. has been the making of a detailed physical survey of all the state institutions. This was used in the preparation of capital budgets and will be of value for all long-range planning. As P. W. & H. usually makes necessary preliminary studies for estimating and budget purposes only, it would appear that private architects will be relieved of the dubious "Privilege" of preparing free sketches prior to appropriations.

The problem of selection of architects has not been solved. P. W. & H. wants to turn this duty entirely back to the individual boards of trustees, subject to approval of the governor and council. It is a question whether this return to political selection would please any architects except those who happen to have the inside track.

The P. W. & H. officials frankly stated that some of the institutions have been dissatisfied on occasion because the department has not always been able to get its work done as promptly as desired, in spite of a 57% increase in staff personnel. In some cases also, legal requirements prohibiting "force account" work have been the direct cause of

higher costs and prolonged delays.

Architects and engineers on their part have frequently not performed satisfactorily with respect to meeting time schedules. While admitting that unreasonable time limits have occasionally been set, this was the most common cause of complaint with consultants' services.

The Chapter representatives stated their three-fold objective in interesting themselves in departmental policy, as follows:

(1) To spread state work fairly among New Hampshire architects.

(2) To see that adequate fees are recognized.

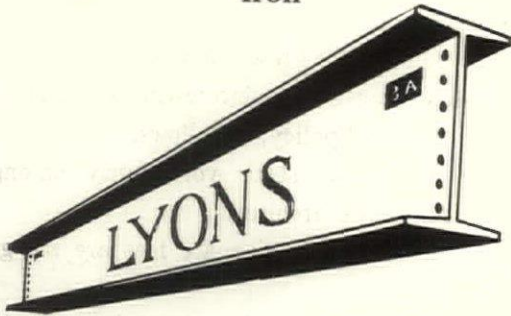
(3) To ensure continued employment of architects and engineers in private practice on state work as opposed to architecture by government.

Responding, the P. W. & H. officials stated that they had not yet recommended employment of the same architect for more than one project, except on work of a continuing nature. A working basis of standard fees has been established, to which no objections have been raised by the architects who have been retained; a copy of this schedule was supplied for our study, and it was stated that comments would be welcomed. The department has no desire to set up a staff to perform regular architectural and engineering services but has been obliged to do considerable "maintenance" detailing, and corrective work of the "headache" type, particularly mechanical and electrical. In reviewing plans and specifications, they do not make complete checks of design but do examine carefully those features which they know from experience are likely to cause trouble.

P. W. & H. anticipate preparation of some simple standards to be met by architects and engineers, which will tend to assure complete and competent services.

The conference was successful in helping each group to a better understanding. It is apparent that while methods and details may not always be in accord, both groups have the same ultimate goal in view.

Steel Structures Designed  
and Fabricated  
—  
Architectural and Ornamental  
Iron



*"Steel when you want it"*

**LYONS IRON WORKS, INC.**

62 MAPLE ST. MANCHESTER, N. H.

DIAL 5-6975



for  
**DEPENDABLE  
ROOFING**  
call

**A W THERRIEN CO**  
ROOFING SHEET METAL WORK

Tin	Cornices
Slate	Blowpipe Systems
Copper	S Skylights
Asbestos	Ventilation
Tar and Gravel	Stainless Steel Work
Smooth Asphalt	Furnaces
Asphalt Shingle	Gutters and Downspouts

Manchester, N. H.

Tel. 3-6193

59 Depot St

**PALMER**

**PLUMBING SUPPLY COMPANY**

Wholesalers

Plumbing - Heating - Mill Supplies

Distributors of

**WEIL-McLAIN BOILERS**

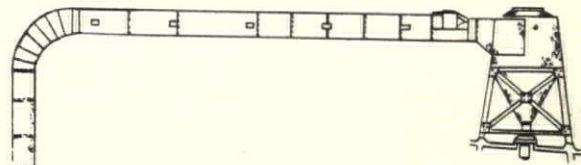
**KOHLER ENAMELWARE**

**PETRO OIL BURNERS**

ROCHESTER, LACONIA, KEENE, N. H.

PORTLAND, ME.

"Competent Engineering Service"



**H. L. HOLDEN CO. Inc.**

Engineers, Contractors and Manufacturers of Dust Collecting Systems, Ventilation, Pneumatic Conveying of Materials: General Sheet Metal Work. Equipped with the most Modern Sheet Metal Machinery in Northern New England.

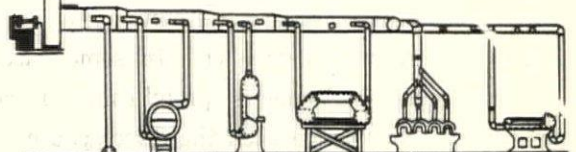
Experienced Engineers to Recommend  
Expert Mechanics to Install.

660 Main Street Keene, New Hampshire

Telephones

1067-W Days

1067-R Nights



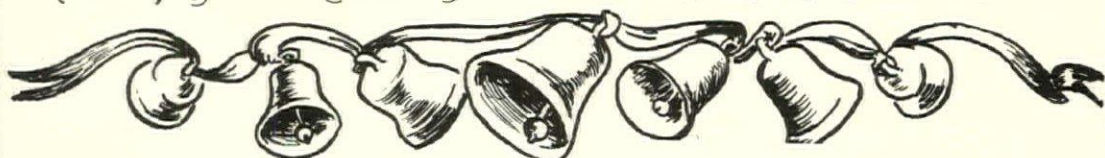
Frederick Gutheim A.I.A.  
1741 New York Ave.  
Washington 6 D.C.

Form 3547 Requested



## The American Institute of Architects

Wish you a Merry Xmas & Happy New Year



Anderson-Nichols and Company  
Concord

John D. Betley,  
Manchester

Alfred T. Granger Associates,  
Hanover

Hudson and Ingram,  
Hanover

Koehler and Isaak,  
Manchester

Willis Littlefield  
Dover

Edward Benton Miles,  
Exeter

Orcutt and Marston,  
Hanover

Carl E. Peterson,  
Manchester

Leo P. Provost  
Manchester

Norman P. Randlett,  
Laconia

Tracy and Hildreth,  
Nashua

William L. White,  
Exeter

Maurice E. Witmer,  
Portsmouth

*Each of the above firms has one or more individuals in the*

**New Hampshire Chapter  
American Institute of Architects**