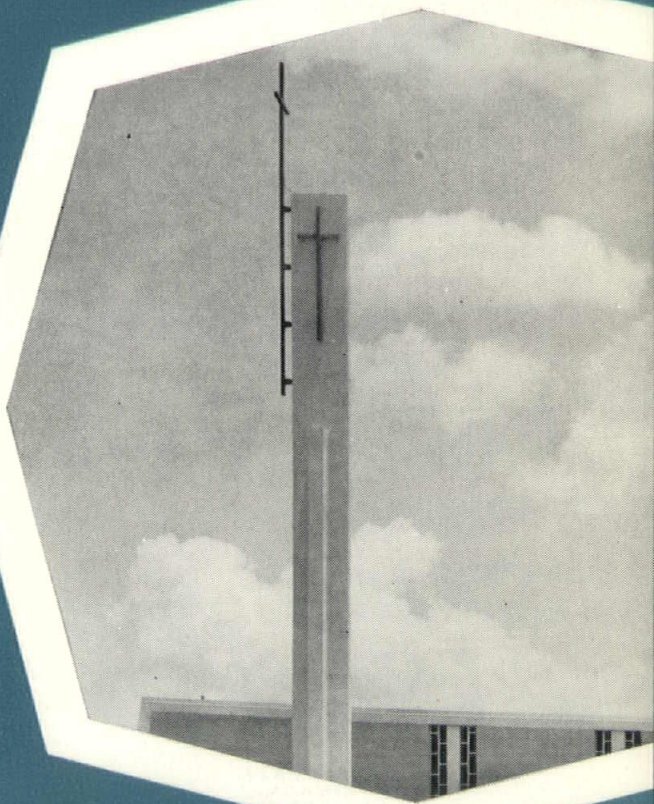


AMERICAN INSTITUTE
OF
ARCHITECTS
SEP 24 1963
LIBRARY

SEPT. 1963



MISSISSIPPI ARCHITECT



The AMERICAN INSTITUTE of ARCHITECTS MISSISSIPPI CHAPTER

The American Institute of Architects is the national organization of the architectural profession, and its initials A.I.A. following the architect's name have come to be recognized publicly as a certificate of merit. His membership in the A.I.A. attests to the architect's integrity, proven professional qualifications, and good standing in his community.

EXECUTIVE COMMITTEE

James G. Chastain, A.I.A.
President

Joe T. Pursell, A.I.A.
Vice President

Kenneth W. Hayes, A.I.A.
Vice President

John C. Skewes, A.I.A.
Secretary-Treasurer

James E. McAdams, A.I.A.
William R. Henry Jr., A.I.A.

BILOXI

John T. Collins, A.I.A.
Leonard Collins, A.I.A.
Henry F. Fountain, A.I.A.
Carl E. Matthes, A.I.A.

BROOKHAVEN

John Bishop Seavey, A.I.A.

CLARKSDALE

John C. Skewes, A.I.A.

COLUMBUS

Fred L. Harrison, A.I.A.
William I. Rosamond, A.I.A.

CORINTH

B. A. England, A.I.A.

GREENVILLE

Harold Kaplan, A.I.A.
Matthew L. Virden III, A.I.A.

GREENWOOD

James E. McAdams, A.I.A.

GULFPORT

Flynt M. Hall, A.I.A.
Kenneth W. Hayes, A.I.A.
Milton B. E. Hill, A.I.A.
Carl Y. Parker, A.I.A.
Vinson B. Smith, A.I.A.

HATTIESBURG

Stephen H. Blair Jr., A.I.A.
David K. Hemeter, A.I.A.
Juan E. Landry, A.I.A.

Juan G. Landry, A.I.A.

Carl E. Matthes Jr., A.I.A.

J. Warren McCleskey, A.I.A.

J. Warren McCleskey, Jr., A.I.A.

HOLLY SPRINGS

Hugh H. Rather, A.I.A.

JACKSON

William R. Allen Jr., A.I.A.
Charles C. Barlow, A.I.A.
Robert B. Bassett, A.I.A.
Thomas J. Biggs, F.A.I.A.
Raymond Birchett, A.I.A.
B. A. Brady, A.I.A.
George Lee Brock, A.I.A.
W. A. Browne, A.I.A.
Harold C. Brumfield, A.I.A.
William E. Campbell, A.I.A.
James T. Canizaro, A.I.A.
James G. Chastain, A.I.A.
James Watts Clark, A.I.A.
Vance D. Clemmer Jr., A.I.A.
Charles H. Dean Jr., A.I.A.
Eugene Drummond, A.I.A.
Robert E. Farr, A.I.A.
Frank P. Gates, A.I.A.
William L. Gill, A.I.A.
Earl T. Gilmore, A.I.A.
Arthur J. Godfrey, A.I.A.
Harry Haas Jr., A.I.A.
William R. Henry Jr., A.I.A.
John F. Hester, A.I.A.
Grady L. Hicks, A.I.A.
Ransom Cary Jones, A.I.A.
C. C. Kenney, A.I.A.
James C. Lee, A.I.A.
Jay T. Liddle Jr., A.I.A.
E. L. Malvaney, A.I.A.
Emmett Malvaney, A.I.A.
John M. Mattingly, A.I.A.
Charles P. McMullan, A.I.A.
Charles C. Mitchell, A.I.A.
William D. Morrison, A.I.A.
R. W. Naef, F.A.I.A.
Edward Ford Neal, A.I.A.
E. E. Norwood, A.I.A.
N. W. Overstreet, F.A.I.A.
Joseph Russell Perkins, A.I.A.
Joe T. Pursell, A.I.A.
Frank E. Rice, A.I.A.
Harry S. Shields, A.I.A.
John W. Staats, A.I.A.

T. N. Touchstone Jr., A.I.A.

John L. Turner, A.I.A.

John M. Ware, A.I.A.

Joseph T. Ware Jr., A.I.A.

Harry E. Weir, A.I.A.

Edward J. Welty, A.I.A.

Dudley H. White, A.I.A.

LAUREL

John W. Hunt, A.I.A.

John C. Suffling, A.I.A.

McCOMB

William Ragland Watkins, A.I.A.

MERIDIAN

Bill Archer, A.I.A.

Luther L. Brasfield, A.I.A.

Robert B. Clopton, A.I.A.

MISSISSIPPI CITY

Lloyd K. Grace, A.I.A.

Willis T. Guild Jr., A.I.A.

Robert D. Ladner, A.I.A.

NATCHEZ

Beverly Martin, A.I.A.

PASCAGOULA

Peter J. Baricev, A.I.A.

STARKVILLE

Thomas H. Johnston Jr., A.I.A.

Thomas Shelton Jones, A.I.A.

Thomas O. Wakeman, A.I.A.

TUNICA

John H. Pritchard, F.A.I.A.

TUPELO

Robert B. McKnight, A.I.A.

Clarice M. Payne, A.I.A.

MEMBERS EMERITUS

John H. Harvey, A.I.A.E.

Fresno, Calif.

Wilfred S. Lockyer, A.I.A.E.

Picayune

Robert J. Moor, A.I.A.E.

Destin, Fla.

Associates: William L. Addikson, Boyce C. Biggers, Larry L. Bouchillon, Beverly Ann Bradley, F. Marion Brewer, Robert Burns Jr., Leon W. Burton, Alton B. Clingan Jr., Lynton B. Cooper, Nicholas D. Davis, William A. Easom, Thomas J. Gardner, Eugene M. Hansen, Max L. Harris, Robert Harrison, Alfred B. Hicks, Monroe J. Hilton Jr., Charles Howard, James C. Jenkins, J. D. Jernigan, Warrnie C. Kennington, William Lawrence, Cranon LeBlanc, A. Neilson Martin, William D. May, John M. Montgomery, James E. Moorhead, Clinton D. Nickles, Jerry A. Oakes, Francis F. Parker, Sidney E. Patton, Leslie P. Pitts, Malcolm L. Pointer, J. Ed Ratliff, Moody Reed Jr., Robert W. Riggins, James Cooper Rimmer, C. R. Slaughter Jr., Charles R. Smith, John T. West, Robert H. Westerfield, Malcolm D. Wetzel, Enoch J. Williams.

Junior Associates: Charles F. Craig, Marion Fox, Charles R. Gardner, Don Leopard, Jesse C. Pearson, Connely Plunkett, Marion Raidt, Thomas H. Smith, John M. Ware, Jr., Ralph Alvin Whitten, Howard B. Zeagler.

Mississippi Architect is published monthly by the Mississippi Chapter of the American Institute of Architects, in conjunction with Construction News, Inc. Opinions expressed herein are those of the editor and contributors and not necessarily those of the Mississippi Chapter, A.I.A. Inquiries may be addressed to P. O. Box 9783, Jackson, Mississippi

William R. Henry Jr., A.I.A.

Editor

Harry Haas Jr., A.I.A.

Edward Ford Neal, A.I.A.

Editorial Advisors

Engineers and Architecture

Engineering was originally defined as the art of managing engines. The definition has since been changed to that of an applied science concerned with utilizing inorganic products of earth, properties of matter, sources of power in nature, and physical forces for supplying human needs in the form of structures, machines, manufactured products, precision instruments, industrial organization, the means of lighting, heating, refrigeration, communication, transportation, sanitation, public safety, and other productive work. It would seem that one might properly call himself an engineer if he is engaged in any of these activities. For this reason the title *engineer* means little unless differentiated.

Engineers of unlimited variety and degree of qualification are involved in the manufacture of building products for the construction industry and thereby make an indirect contribution to architecture. The engineers that are usually directly concerned with architecture are civil engineers, structural engineers, electrical engineers, and mechanical engineers.

The civil engineer surveys the land. He locates property lines, trees, utilities, and existing structures in addition to ground slopes.

The structural engineer obtains soil information and designs foundations. He designs the wood, steel, or concrete members of the structure as necessary to support all loads and resist all physical forces.

The electrical engineer designs the electrical distribution and communication systems for the structure. He provides electricity for lighting and all power loads including special motor-driven equipment appliances, heating, and cooling. He makes provisions for the telephone, inter-com, and antenna systems.

The mechanical engineer designs the plumbing, heating, cooling, and ventilating systems for the structure.

These are licensed professional engineers and hold degrees in their particular field from accredited schools of engineering. Large architectural firms often have engineer members. Others employ their own engineers on a full-time basis. In our state, most of the engineers have individual practices and serve a number of architectural firms.

Either way, the professional engineer is a vital and valued member of the architectural team. The architect designs a structure from a broad base of engineering knowledge and relies upon the special talents of these experts to insure that the client receives the ultimate in a structure.

— Bob Henry

BAPTIST CHURCH

FOR the architects, the commission to design this church was both a challenge and an unusual opportunity.

Here was a new building to be located on a new site, a structure which was to serve an independent purpose for the present, and later be fitted in with a long-range program of future development.

The architects worked with a pastor and congregation who were ready to accept a solution to the problem based on the use of contemporary materials and methods, without the arbitrary restrictions imposed by the requirements of traditional design.

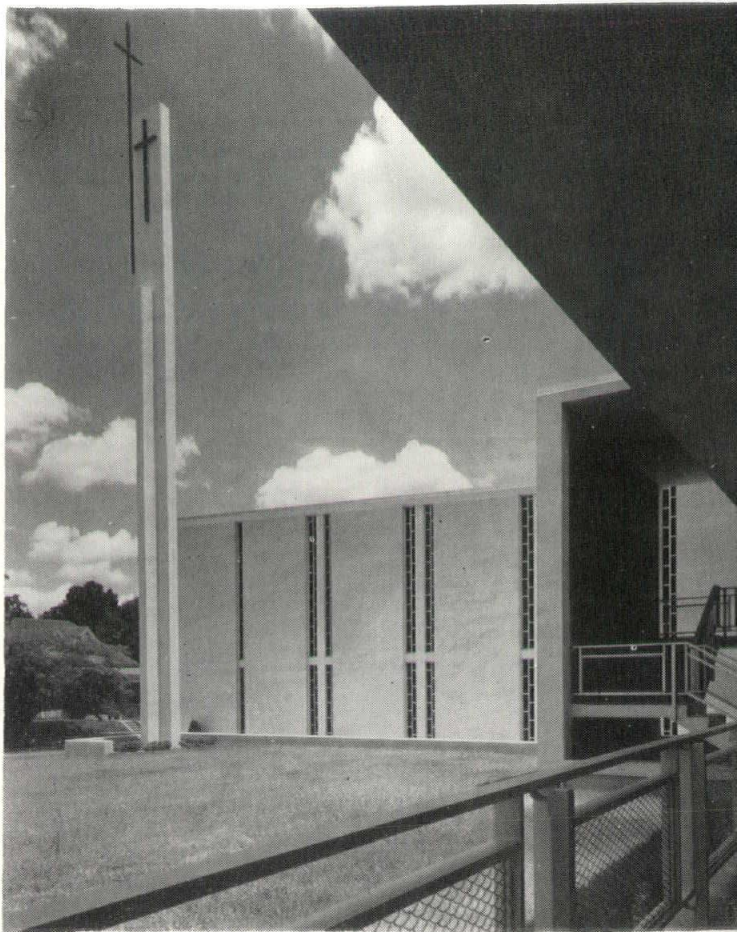
A contract for \$253,000 was let to build the 22,718-square-foot building. It is of reinforced concrete and masonry, and therefore substantial and fire-resistive. It also has a feeling of airy lightness produced by translucent panel walls and open corridors and stairways. Harmony of color and contrasts in light and shadow were studied with care for exterior and interior effects.

To meet the immediate requirements, three elements were provided:

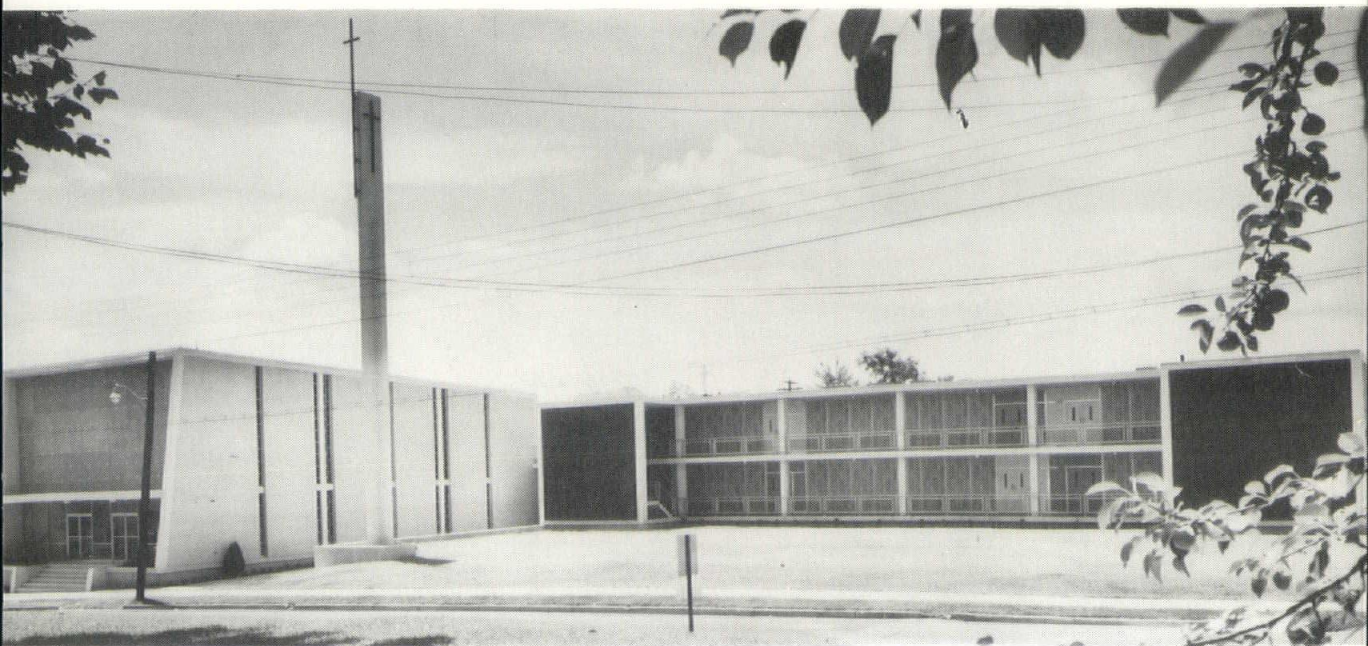
A chapel for worship, with deeply-tinted glass windows, lighting to create a spiritual atmosphere, and specially designed ornamental stone panels.

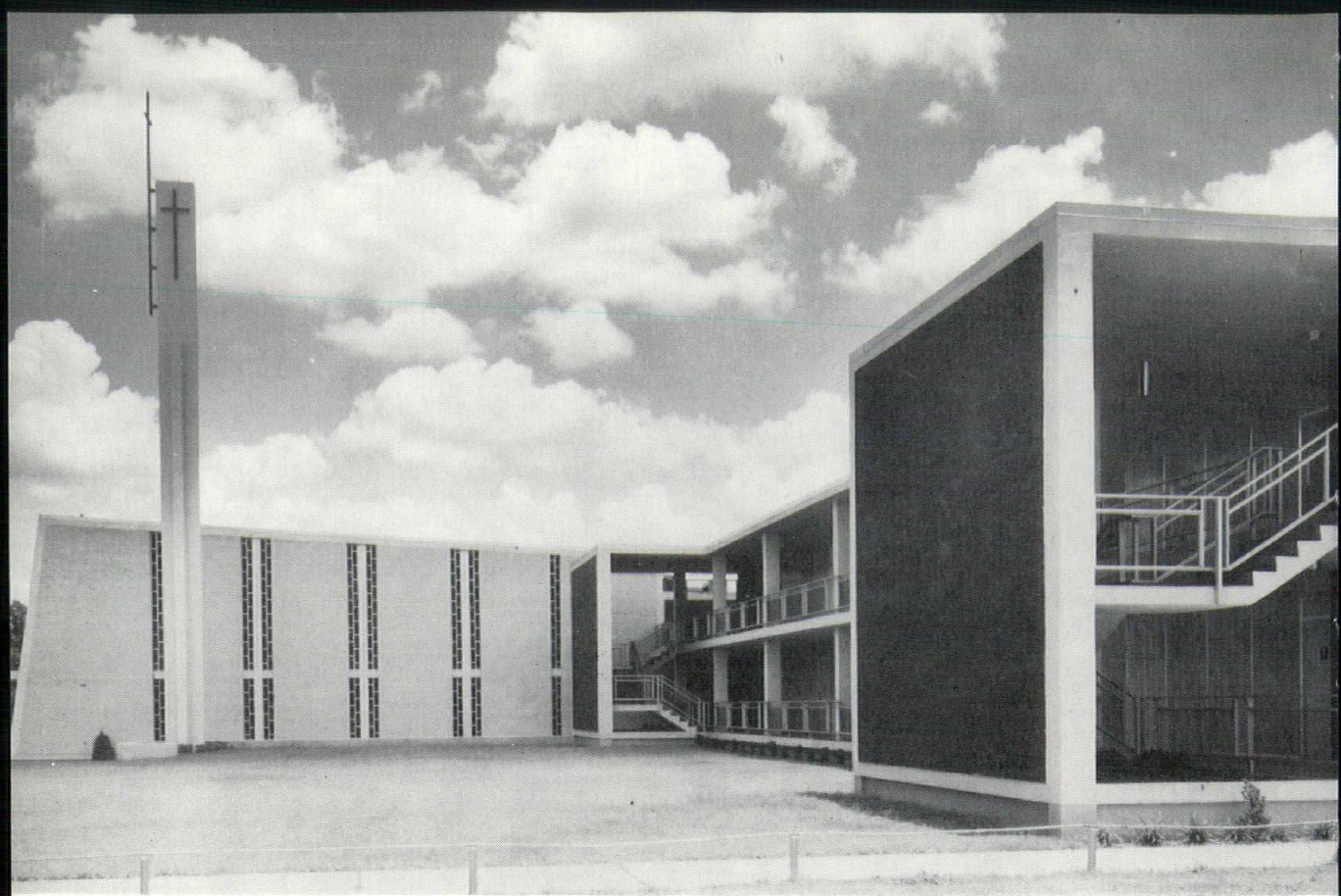
Educational space for teaching, with translucent wall panels, simple finishes with gay colors.

A free-standing tower of concrete topped with a metal cross reaches above the other elements to unify the whole.



Photos by Hiatt-Ford





BAPTIST CHURCH

Meridian

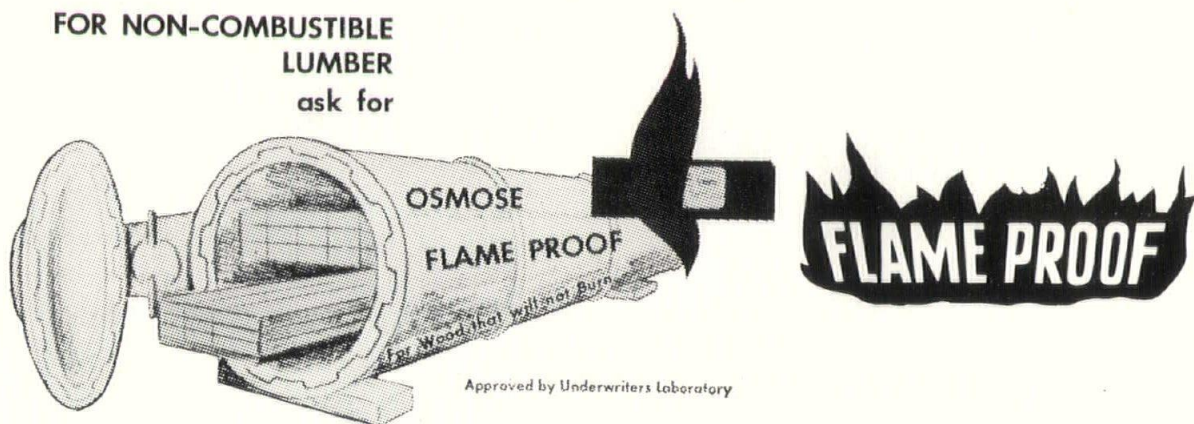


NOW!

WOOD that won't burn

OSMOSE

FOR NON-COMBUSTIBLE
LUMBER
ask for



Manufactured By

and Available From:

Sanders Lumber Co., Meridian, Miss.

Dixie Wood Preserving Co., Pine Bluff, Ark.

Follen Wood Preserving Co.

**Baton Rouge, La.
Jackson, Miss.**

GENERAL COMPONENTS, INC.

ROOF TRUSSES

Quality Truss Builders

4171 NORTHVIEW DR.
JACKSON, MISS.
EMerson 6-3116

2130 - 23rd AVENUE
GULFPORT, MISS.
UN 3-3352

P. O. Box 1633
Phone FL 5-3427

Phone FL 5-3428



961 FAIRGROUNDS STREET
JACKSON, MISS.

*"For Rugs Cleaned Well And Carpets
That Excell Call George Bell"*

CAPTIOLE HARDWARE CO., INC.

- YALE & TOWNE
CONTRACT HARDWARE
- WILSON DOORS
ROLLING STEEL — WOOD — CLOSURES
- LUPTON WINDOWS
ALUMINUM — STEEL — CURTAIN WALL
- GLOBAL PARTITIONS
TOILET — HOSPITAL
- HOLLOW METALS • STOCK—CUSTOM

MISCELLANEOUS SPECIALTIES — COMPLETE LINE

3006 W. NORTHSIDE DR. 362-2484
JACKSON 6, MISSISSIPPI
P.O. BOX 9597

Ridgway's

L. L. RIDGWAY COMPANY, INC.

103 E. PEARL ST.
JACKSON, MISSISSIPPI

REPRODUCTION
MATERIALS
ARCHITECTS
AND
ENGINEERS
SUPPLIES

FL 5-4751



Building Products Company WHOLESALEERS EXCLUSIVELY

FORMICA **KENTILE**

106 Oakdale St. Phone 352-4064
JACKSON, MISSISSIPPI

SAM McMURRAY

J. E. PUCKETT

**QUALITY
CONSTRUCTION**

ALWAYS SPECIFY THE BEST

**BEGINS
WITH
GOOD
LUMBER**

**QUALITY MPMA GRADE-MARKED
SOUTHERN PINE**

PRODUCED AND SOLD BY MEMBER MILLS OF
Mississippi Pine Manufacturers Assn.

535 COLLEGE ST.

Jackson, Miss.



Le Corbusier's First U. S. Building

Rigid rectangles broken by asymmetrical curves give a sense of flow to the Visual Arts Center on the Harvard University campus. The glass-and-concrete structure, first building in the U.S. designed by the French architect Le Corbusier, utilizes columns of various sizes, deeply recessed window areas with concrete sun shades and a five-story wall of colored glass blocks.

ON A CRAMPED SITE, tucked in between the Fogg Museum and the Faculty Club on the Harvard University campus, is a new and unusual building which combines unconventional architectural designs with such standard, time-tested materials as glass blocks. The building is the Carpenter Center for the Visual Arts and is the first building in the United States designed by the French architect, Le Corbusier.

(Continued on following page)

Le Corbusier's First U. S. Building continued



Often called the "brutal" architect, for the rough-hewn design and texture of his buildings, Le Corbusier combined in this structure open square and rectangular shapes, broken by curving perimeter glass walls which are set in stark natural concrete. The openness and walls of glass provide interpenetration of outdoor space, which is the key to the design of the building.

Adding to the basic shape of the Center, Corbu, as he is generally known, utilized huge load-bearing columns which rise throughout the building, floor-to-ceiling window walls overlooking terraces, vertical and horizontal concrete sun screens, a curvilinear bisecting ramp, and a five-flight façade of colored glass blocks to light the stair tower.

Architectural designs like the columns and sun screens outlining the window walls are a jolt to many. The columns are spaced irregularly and varying sizes are exposed within the classrooms as well as at the base of the building. Their placement and size depend on the need for support in the particular area.

The enormous sun screens give the glass walls a deep-set, recessed appearance, and eliminate the need for shades or shading devices. The result is a sense of oneness to the outdoors, aided by the many grass-planted terraces, extending from the glass walls to the edge of the room at various levels.

The pedestrian ramp to the third level of the building connects the two streets on either side of the Center.

Probably the most standard of the devices employed by Corbu was the use of the colored glass blocks in the stairway wall. These glass blocks illuminate the five flights of stairs so that little or no auxiliary lighting is necessary during the day. The color, Shade Aqua, is blue-green which transmits soft, natural daylight. The random pattern of the glass blocks creates a constantly changing design which admits an abundance of daylight but restricts vision.

The building as planned by floors: basement—multi-purpose auditorium, light and communication studios and photographic dark rooms; first floor—administrative areas and common room; second floor—workshops for three-dimensional design; third floor—workshops for two-dimensional design, and exhibition space; fourth floor—seminar rooms and special projects; fifth floor—artists' studio.

In its few months of existence, the Visual Arts Center has become a building of national significance.

The top section of the four areas of glass blocks in the Visual Arts Center at Harvard University contains more than 200 12" x 12" Shade Aqua blocks. This glass block wall begins at the landing between the fourth and fifth floors and continues to the top of the building. The soft shade of the colored glass transmits diffused daylight to the stairways and landings.

KING OF PRUSSIA PLAZA, scheduled for "official dedication" in late August, is being developed as a "regional center" for not only shopping but also cultural and civic activities in this fast growing suburban area, 18 miles northwest of Philadelphia.

When completed by The M. A. Kravitz Company, Inc., the 95-acre tract will be one of the nation's largest regional shopping centers, with 1,300,000 square feet of retail area and parking for 9,000 cars.

Three major full-line department stores—E. J. Korvette, J. C. Penney, and John Wanamaker—and more than 50 other national and independent merchants and financial institutions will serve every need of shoppers. There will ultimately be more retail space in the Plaza than presently exists in five surrounding towns.

Design of King of Prussia Plaza is unique. It was planned as a pleasurable experience for the family, with the hope that visitors would stay longer and return often, to enjoy the restful, parklike setting. Buildings are modern; facilities and conveniences up to date in every respect. Yet, the malls and promenades are Early American, in keeping with the historic traditions of the Valley Forge area. Architects are Leonard Evantash and Stanley M. Friedman.

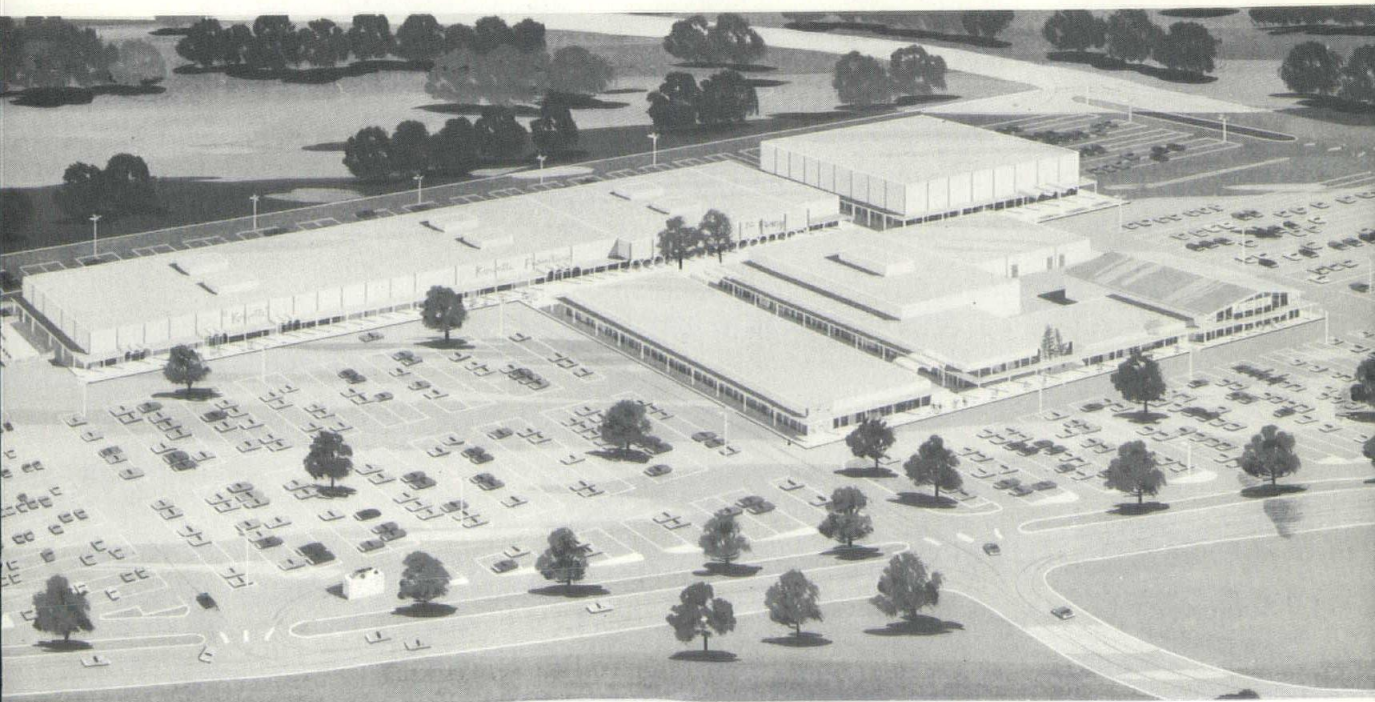
Nucleus of the complex is formed by the three department stores. The remaining stores are conveniently placed along contiguous malls. Parking areas surround the buildings on all four sides.

Architecture of the buildings has been kept simple with the use of Valley Forge stone, white brick, and glass. Canopies have delicate lines, and arches are used to accent the straight surfaces of the buildings and mark entrances to major units. Use of trees and plants, rock and cobblestones, water and fountains create an agreeable atmosphere.

Altogether, there are four mall areas along two main promenades, one extending east-west and the other north-south, to form a giant "T." The malls provide a panorama—affording pleasant surroundings for meeting and relaxation, with easy access to nearby stores, while the walks under the canopies are the major movement areas. Once inside these malls and promenades, visitors will be free to mingle with people along a colorful bazaar of shops of every description.

King Of Prussia Plaza

Architects rendering of King of Prussia Plaza gives an indication of the general layout of the 95-acre tract. Shown across the top (from left to right) are the three full-line department stores — E. J. Korvette, J. C. Penney and John Wanamaker. South of these three stores is the East-West Promenade.



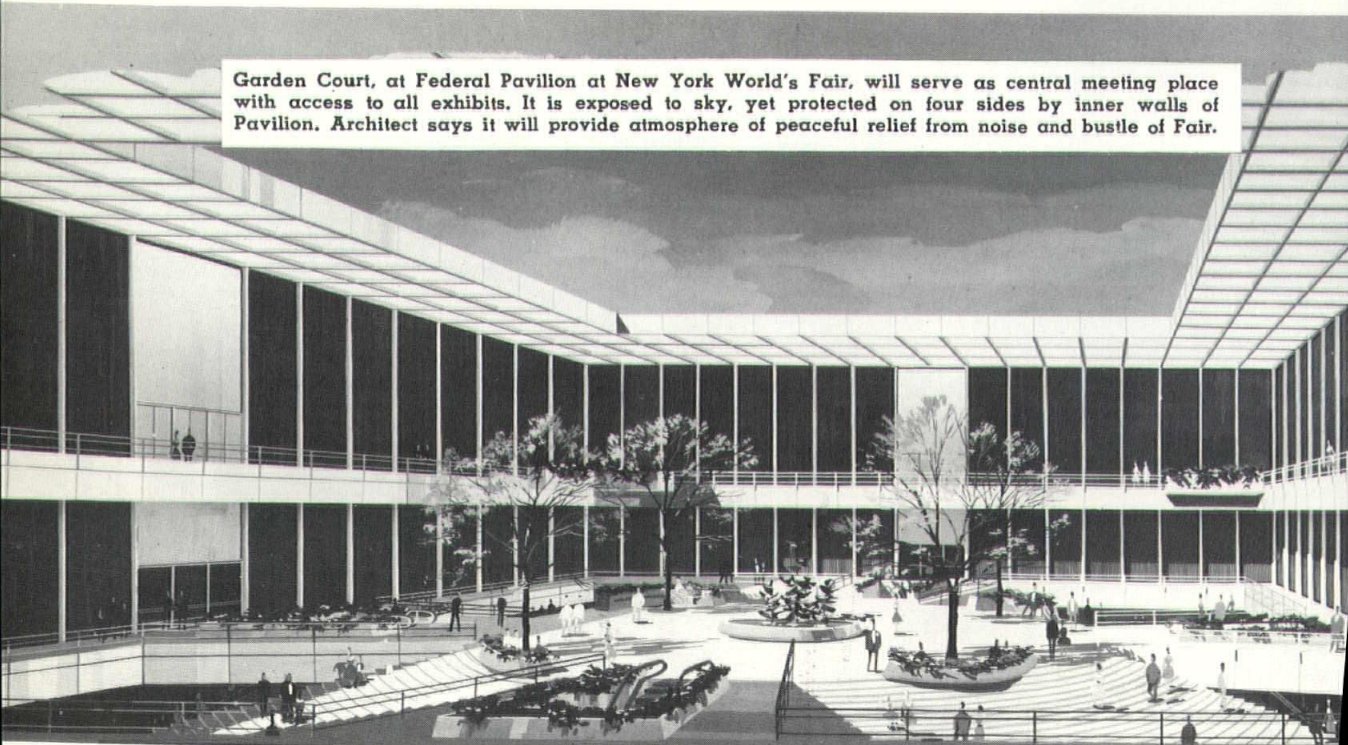
PREVIEW:

The U.S.A. At The World's Fair!

MASSIVE STEEL GIRDERS being riveted into place at Flushing Meadow, N. Y., form the giant skeleton of the United States Pavilion, which will represent America to millions of visitors at the 1964-65 New York World's Fair.

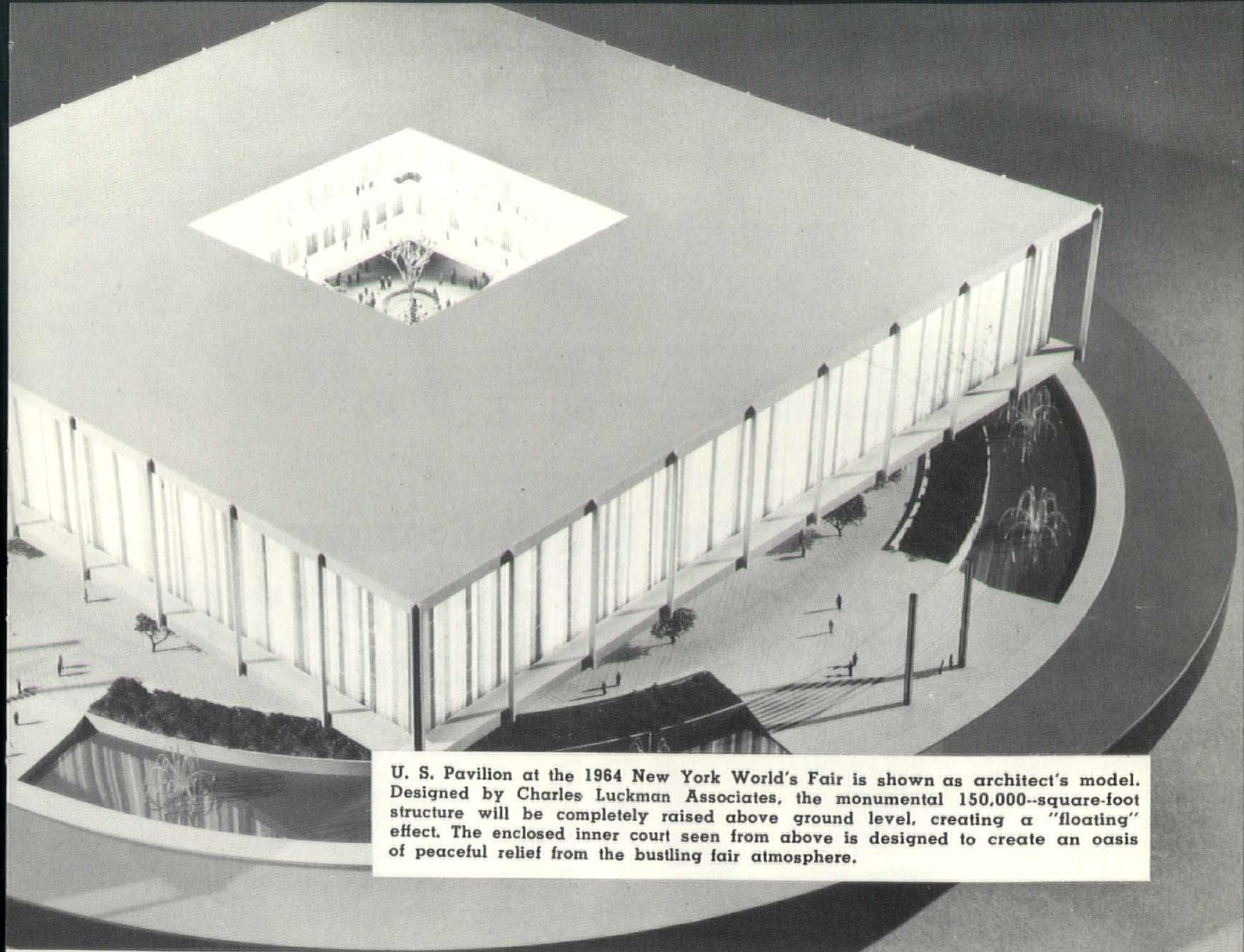
The new Pavilion promises a fresh architectural approach in government exhibition buildings in its unique exterior and interior design and in the imaginative exhibits it will house.

Experts who chose the building's design from 28 preliminary drawings predict that the Pavilion, the largest our Government has ever erected at a fair, will be a striking representation of the U. S. theme for the Fair, "Challenge to Greatness," and an outstanding example of future trends in architecture.



Garden Court, at Federal Pavilion at New York World's Fair, will serve as central meeting place with access to all exhibits. It is exposed to sky, yet protected on four sides by inner walls of Pavilion. Architect says it will provide atmosphere of peaceful relief from noise and bustle of Fair.

This architectural rendering depicts the interior of the Garden Court, a large, open-air atrium. The space is characterized by a high, vaulted ceiling with a grid of steel girders and large glass panels that allow natural light to filter in. The ground floor is a wide, open area with a patterned floor, featuring several large, mature trees and circular planters. People are shown walking and standing throughout the space, providing a sense of scale. The upper levels are accessible via ramps and stairs, with railings visible. The overall atmosphere is one of a modern, airy, and well-lit public space.



U. S. Pavilion at the 1964 New York World's Fair is shown as architect's model. Designed by Charles Luckman Associates, the monumental 150,000-square-foot structure will be completely raised above ground level, creating a "floating" effect. The enclosed inner court seen from above is designed to create an oasis of peaceful relief from the bustling fair atmosphere.

Norman K. Winston, U. S. Commissioner to the World's Fair, said that the building, larger than a city block, will seem at first glance to "float" in space above the ground.

Actually, the Commissioner revealed, it will be supported by four massive steel columns utilizing the same architectural principle employed in cantilevered bridges. The Pavilion's exterior walls will be high as an eight-story building and will be made up almost entirely of thousands of vari-colored glass-like plastic panels which will reflect sunlight during the day and which will glow with an interior light at night.

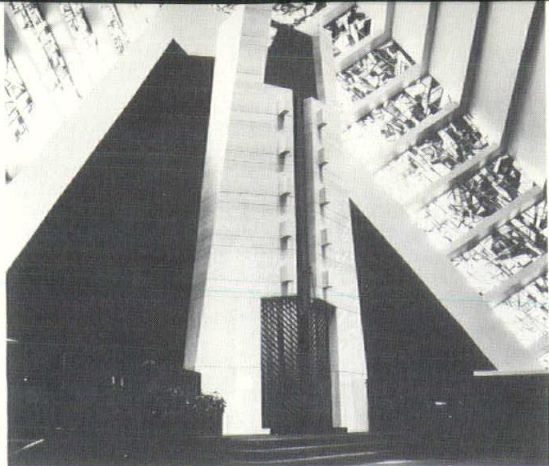
The spacious entrance to the Pavilion, Winston reported, will give visitors a feeling of tranquility as they approach. Sweeping pyramids of steps and escalators, flanked at their base with pools and fountains, will carry you away from the hurly-burly of the fairgrounds to a restful garden court-planted with trees and shrubs and accented with sculpture. The garden court, a place of beauty and repose, will be the point of central access to major Pavilion areas.

Commissioner Winston said that as you enter the building the first view will be a panoramic

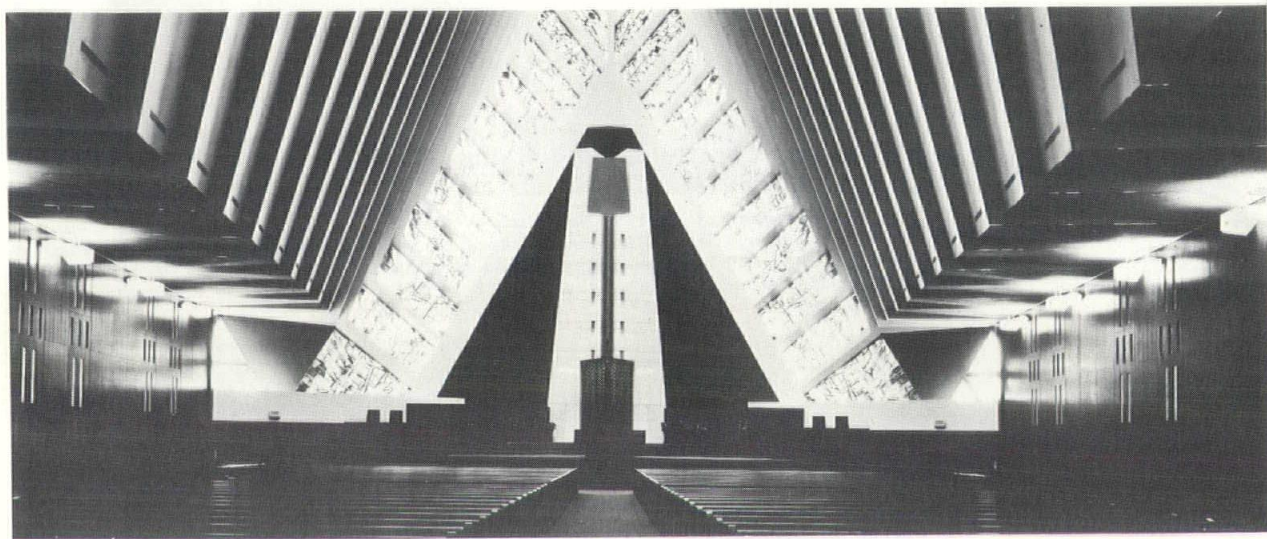
representation of America today and the challenges which lie ahead for the nation. Most of the whole first level of the Pavilion will be devoted to this three-part exhibition depicting the origins of freedom; the land and our life upon it; and a portrayal of the "New America"—a free nation still striving for perfection. The lower Pavilion level also will house an auditorium for meetings, recitals and lectures.

Once on the upper level, Fair visitors will embark on a 15-minute "total experience" ride, which Winston called "a virtually unprecedented theatrical experience, the heart of the whole Federal exhibit." Individual automatic cars will carry each viewer through a series of film images, and visual and sound effects which dramatize the essential spirit of the United States. This exhibit area, entitled "Horizons," will unfold the tremendous potential of a truly free life in a democracy dedicated to the welfare of all mankind.

Commissioner Winston said a special area offering further information about subjects treated within the exhibition hall will complete the tour. Here, a computer facility will reveal supplementary information in response to questions by visitors.



MARBLE ARK Is Focal Point Of New Detroit Synagogue



A MAGNIFICENT marble ark, 40 feet high, serves as the focal point of a recently completed synagogue-center in Southfield, Michigan. Located on a 40-acre site in this Detroit suburb, Congregation Shaarey Zedek was designed by Albert Kahn Associated Architects and Engineers, Inc., with Percivil Goodman, F.A.I.A., of New York as Associate Architect.

The greatest challenge of this \$3,900,000 project was the creation of a flexible structure which, at High Holy Days, would seat 3,600 people and normally would accommodate 1,200 congregants. The result of months of study and analysis was an elongated diamond-shaped design divided so as to create two equilateral triangles (which became the Social Halls) and a remaining central space separated from the flanking halls by folding walls (which became the Hall of Prayer.)

According to the architects, the entire structure, both externally and internally is an organic whole. The central element rises forming a ceiling, 90 feet high at the front of the synagogue.

Every line practically and aesthetically converges, leading the eye toward the central ark of "Golden Galilee" marble. The importance of this ark is reinforced in several ways: by its centrality, by its height, and by its frame of elaborately designed stained glass windows which surround it.

In describing the architectural concept of the entire structure, Albert Kahn & Associates state, "The design of the Prayer Hall is in reality three frames, each diminishing in size; the first is the Hall itself framing all, the second are the stained glass windows framing the marble Ark, the third is the Ark which frames the sculptured eternal light and the doors.

In addition, Shaarey Zedek Synagogue reflects the multi-purpose character of a modern synagogue. The worship element is, as it always was, paramount, but the social elements and the educational elements have become of major importance. So, the synagogue becomes not merely a house where people assemble to worship, it becomes a community center.

WESTERNERS are experiencing the thrill of pioneering once again, and this time in a field which has hitherto been chiefly an Eastern concern—urban redevelopment.

In Houston, Texas, Cullen Center, a \$100 million, six-block development which represents an entirely new concept of downtown planning has been opened to the public with completion of the first two structures: the 500 Jefferson office building and the Hotel America.

And Houstonians believe the new idea will be copied by other cities.

Designed by Welton Becket and Associates, architects and engineers, the \$12 million, 21-story office building and the \$6 million, 12-story hotel have their main lobbies at the second level, where they are joined by an air-conditioned pedestrian concourse which bridges the main thoroughfare. The first levels are recessed, providing open plazas at the ground.

The total complex will include three high-rise office buildings, the hotel, two high-rise apartment buildings and necessary parking and public facilities on a 12-acre site.

"Cullen Center represents a marked departure from the traditional downtown scene," Gerald E.

Veltmann, president of Cullen Center, Inc., explained, "in that it centers around a planning concept with four separate levels: subsurface, used for parking and mechanical equipment; surface, used for vehicular traffic, parking, entrance lobbies and service entrances; second level, used for pedestrian-oriented facilities such as main lobbies, shops, displays, galleries, lounges and restaurants; and the space above, into which will rise the various towers containing hotel rooms and offices."

All buildings will be joined at the second level by the air-conditioned pedestrian bridges, which provide complete separation of pedestrians and vehicular traffic.

"Cullen Center clearly demonstrates that privately financed urban redevelopment projects are definitely feasible," Veltmann added.

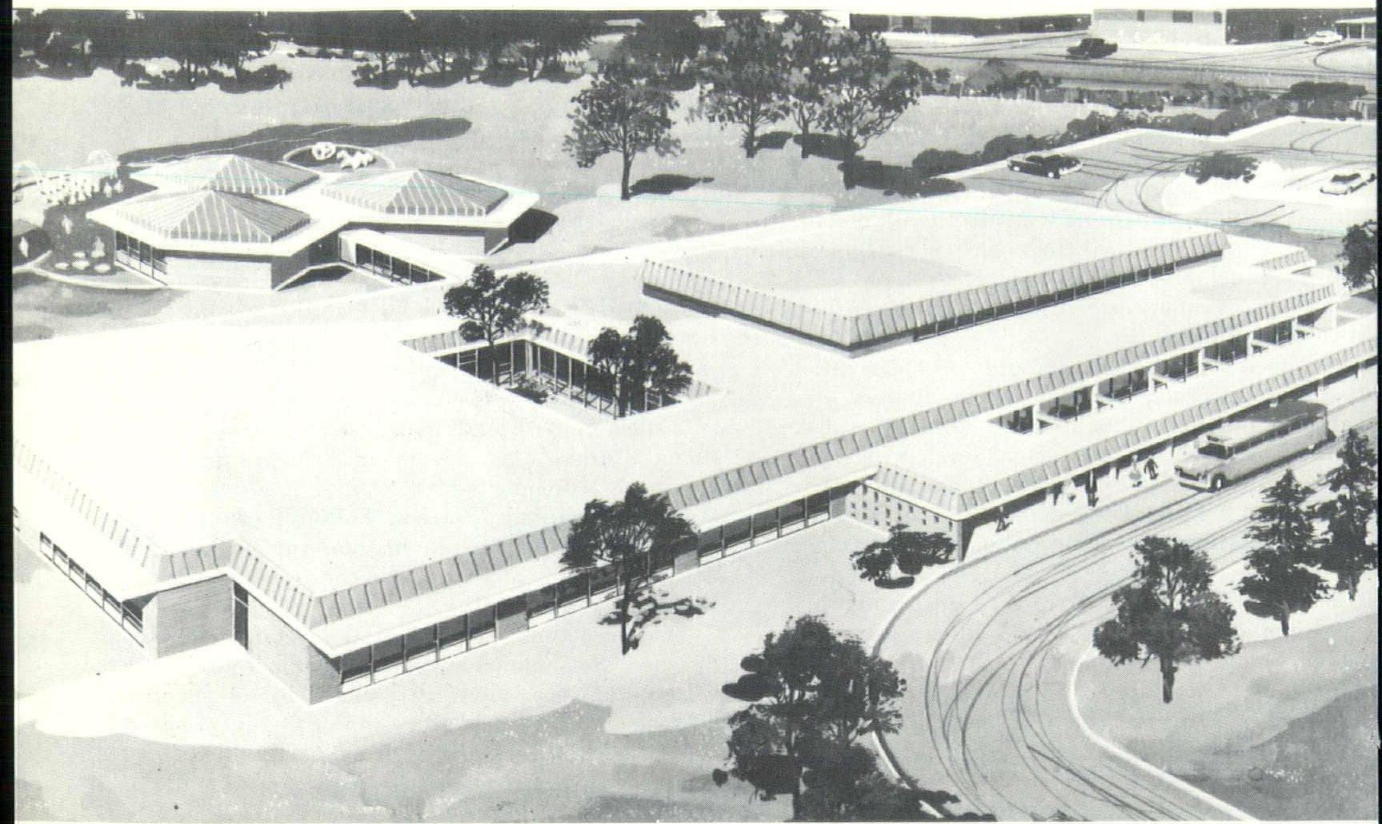
"Our plans call for each building to have an individual identity while maintaining a unity of design for the Center as a whole," architect Welton Becket, FAIA, stated.

"The structures are esthetically related through the use of a common material—concrete—in a variety of forms: physically related by the second-level pedestrian bridges; and visually related around open plaza areas.

TEXAS HOTEL AND OFFICE BUILDING SET PACE FOR ADVANCED CONCEPT PRIVATE URBAN REDEVELOPMENT PROJECT

The 500 Jefferson office building (left) and Hotel America, first two units completed in Houston's Cullen Center, testify to the success of private urban redevelopment. Designed by Welton Becket and Associates, the structures have their main lobbies on the second level, joined by an air-conditioned pedestrian bridge. Cullen center is a six-block, \$100 million redevelopment which separates vehicular from pedestrian traffic.





Unusual design of new steel-framed Brandeis School, now under construction at Lawrence, N. Y., is shown in architect's rendering. In foreground is 30,804 square foot rectangular main section with glass-paneled corridor connecting cloverleaf pattern of three hexagonally shaped rooms in background.

BRANDEIS SCHOOL

WHEN BRANDEIS SCHOOL completes construction of new million-dollar facilities early this fall at Lawrence, New York, many of the school's young pupils literally will be "in clover." Reason: the unusual cloverleaf design of its steel-framed school building.

Extending from the center rear of the building's one-story rectangular main section is a 40-foot-long, glass-paneled corridor connected to a cloverleaf pattern of three hexagonally shaped rooms, approximately 900 square feet each.

While tiny tots play and learn in the cloverleaf area (consisting of a nursery and two kindergarten rooms) under roofs resembling miniature merry-go-round tops, pupils in grades from one to nine will be hard at work in the main section of the school.

So that Brandeis's teachers can better meet the educational needs of students, classrooms in the main section are designed for a maximum capacity of between 20 and 24 pupils; while those in the nursery and kindergarten rooms are designed to hold a maximum of 20 each.

Also contained in the main section are administration offices; library; science, arts and crafts room; music room; a combination gym, auditorium, lunch and activities room (6,200 square feet); and a three-tiered, glass-enclosed courtyard (1,488 square feet) with wooden benches attached at each level, forming a miniature amphitheater for outdoor instruction.

The unusual design for Brandeis School was executed by New York architect Arthur Silver, winner of the Queens Chamber of Commerce Award for the best religious building in 1962 (Bay Terrace Jewish Center). Referring to the six-sided nursery and kindergarten rooms, Mr. Silver commented:

"Most of the functions there—such as games, dances, and various play activities—are held in 'circular form.' We started with a circle, then went to hexagonal shape to eliminate curved lines for reasons of economy.

"Also, we kept the hexagonal rooms separate from the main section so that parents have access directly to the kindergarten wing.

JACKSON STEEL COMPANY, INC.

Reinforcing Steel and Allied Accessories

DIAL FL 5-7457

969 SOUTH ROACH ST.

P.O. BOX 2671

JACKSON, MISSISSIPPI

JACKSON Stone company
INCORPORATED

MANUFACTURERS

- ARCHITECTURAL STONE
- VIBRAPAC MASONRY UNITS
- EXPOSED AGGREGATE PANELS

80 W. MAYES ST.

EMerson 6-8441

JACKSON, MISSISSIPPI

STEVENS
Sheet Metal Contractor

The old reliable specialized in custom sheet metal work from 2692 up to 1/4" plate

Also copper, brass, stainless steel and Aluminum work

822 SOUTH WEST STREET

JACKSON, MISSISSIPPI

TELEPHONE IDlewood 2-5326

440 MAIN STREET



E. B. BRIELMAIER
PLATE GLASS • WINDOW GLASS
STORE FRONTS

BILOXI, MISSISSIPPI

THE BUSINESSMAN'S DEPARTMENT STORE

- Office Furniture
- Office Supplies
- Office Machines
- Printing
- Rubber Stamps
- Library

GREETING CARDS & GIFTS

STAFF DESIGNER • STAFF ARTIST

The
OFFICE SUPPLY
COMPANY

"Complete Office Designers, Outfitters and Printers"

509 East Capitol Street Jackson, Miss. Dial FL 3-4734

ROEVER & McHANN

PAINTING COMPANY

- COMMERCIAL
- INDUSTRIAL
- RESIDENTIAL

2178 HICKORY DR.

JACKSON, MISSISSIPPI

372-6501

Wetmore & Parman, Inc.

Contractors and Builders



649 N. Mill St.

355-7443

Jackson, Mississippi

A. L. Parman, President W. A. Schmid, Vice-President

LET US HELP YOU

Consultants in Audio-Visual Equipment and Installations
Educational — Industrial — Religious

JASPER EWING & SONS, INC.

Audio-Visual Sales & Service
123 E. Pearl Street
Jackson, Mississippi
352-3348

DIXIE-BROWN ENTERPRISES, INC.

415 E. Silas Brown St.
Jackson, Mississippi

Dixie Venetian

Blind Division

Flexalum Twi-
nigher blinds

Kirsch Vertical Blinds

Elkirt Fabric

Louver Vertical
Blinds

Movable wood
Shutters

Brown Awning

Division

Wide selection
of colors and
material for
Canvas Awnings
Patio Covers
Trailer Awnings
Boat Covers
Boat Canopies

Specializing In
Commercial and Industrial
Mortgage Loans
Also
Residential Loans



BAILEY MORTGAGE CO.

161 E. Amite St.

Phone 355-4511

Jackson, Miss.

WEAVER & SONS

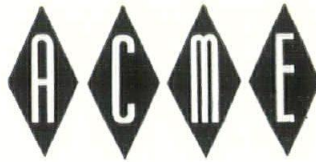
Mechanical Contractors



2509 21st Avenue
Gulfport, Miss.

Telephone 863-7247

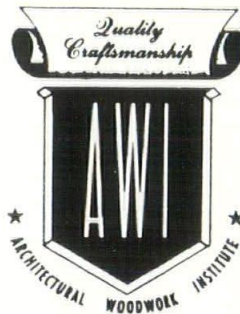
Architectural Quality Millwork Since 1911



Building Supply Company

711-A Street

Meridian, Mississippi



For Other Building Materials
One Call Will Do it All. — 483-4581

Southern Pipe & Supply Co., Inc.

Jobbers and Distributors of
Better Plumbing Supplies

Bath Rooms — Water Heaters — Heating Supplies
Soil & Steel Pipe — Tubing — Valves — Water System

P.O. Drawer 2131 Phone 483-4211 Meridian, Miss.
P.O. Box 2637 Phone 355-7463 Jackson, Miss.

We at Southern Pipe Are Proud of Four Things
Our Customers . . . Our Products . . . Our People
And Our Part in the Growing South

CABINETS — DOOR UNITS
SASH MILLWORK — MOULDINGS

REYNOLDS

Manufacturing Company

LAUREL, MISSISSIPPI

W. A. REYNOLDS
Res. Phone 426-9693

51 Central Avenue
Telephone 426-958

ACE DISTRIBUTORS, INC.

Flexalum Twi-Nighter Venetian Blinds
Flexalum Sun Control Products

EMerson 2-1636

05 W. WOODROW WILSON

JACKSON, MISS.

MISSISSIPPI STEEL CORPORATION

Manufactures and Fabricators of
Steel Reinforcing Bars

Rolling Mill located at Flowood, Miss.

P.O. Box 5780 Pearl Branch

939-1623

JACKSON 8, MISSISSIPPI

Mississippi Testing Laboratories, Inc.

Analytical Chemists

Testing Laboratories

21 S. ROACH ST.

PHONE FLEETWOOD 3-1248

P.O. BOX 152

JACKSON 5, MISSISSIPPI

COLUMBUS, MISS. • GULFPORT, MISS. • MONROE, LA.

WESTINGHOUSE HEATING — AIR CONDITIONING



- RESIDENTIAL
- COMMERCIAL
- INDUSTRIAL

Wholesale Distributor CLIMATE ENGINEERS, INC.

168 E. PORTER

JACKSON, MISS.

FL 3-4681

NEELY BLUE PRINT & SUPPLY CO.

Blue Printing • Photostat Prints
Super Photostat Prints • Photo Murals

Transits — Levels — Alidades — Hand Levels

Instruments Rented — Instruments Repaired (Agents)

White Print Machines — Supplies

Authorized Representatives Keuffel & Esser Co.

19 E. PEARL ST.

FL 4-3523

JACKSON 7, MISSISSIPPI



CEILINGS • FLOORS • WALLS

COUNTER TOPS

RESIDENTIAL & COMMERCIAL

"Be Sure of the Best With C & S"

615 W. Capitol St.

FL 5-6643 - 4-2558

Jackson, Mississippi

Gulfport, Phone 863-1364

Biloxi, Phone 436-3377

COAST MATERIALS CO.

— Ready Mixed Concrete —

P.O. BOX 61 - GULFPORT, MISSISSIPPI

PLANT LOCATED

9th St. & I. C. Railroad

PLANT LOCATED

Beauvoir Road &

L. & N. Railroad



F. MANDAL

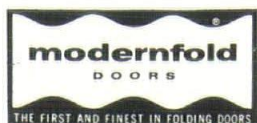
JAMES COOPER

MANDAL'S ROOFING & SHEET METAL

1307 28th Avenue Gulfport, Mississippi UN 4-1474

HEATING AND AIR CONDITIONING
QUALITY SHEET METAL WORK

BOURGEOIS MATERIALS CO.



DEALER
for
FOLDING
PARTITIONS



and other top quality building specialties
Formica — W.R. Meadows Products
Curtis Doors — Filon — IXL Kitchens
National Aluminum Windows and Doors
Truscon Steel Windows and Doors
Armstrong Ceilings

29th Avenue and L.&N.R.R. Telephone UN 3-1862
Gulfport, Mississippi

DIXIE SHEET METAL WORKS



Bonded Builtup Roofing
Heating and
Air Conditioning
Fabrication and
Installation of All Types
Sheet Metal

3201 14th STREET — GULFPORT, MISS.



863-4462

WEATHERSEAL INSULATION CO.

THERMAL INSULATION DEALER

1855 26th AVENUE • P.O. BOX 2223

GULFPORT, MISSISSIPPI

Phone 863-3163

STANDARD BLOCK CO., INC.

Miss-Lite — Slag and Shellite Concrete Block

A.S.T.M. UNDERWRITERS LABEL

Anything in Masonry

V. N. Howie

J. W. Howie

2602 19th St. P.O. Box 295 Telephone UN 4-224

GULFPORT, MISSISSIPPI

WAREHOUSE STEEL — Angles, Beams, Channels, Sheets, Plates, Rounds
Reinforcing Steel — Fabricated, — Wire Mesh, Accessories

SARGENT
COMMERCIAL and RESIDENTIAL
HARDWARE

CHAIN LINK FENCE



AMWELD HOLLOW
METAL DOORS & FRAMES

PHONE 483-4301

BILOXI TESTING AND INSPECTION CO.

120 McELROY ST.

BILOXI, MISS.

PHONE 435-165

CONCRETE • SOILS • ASPHALT • SUB-SURFACE INVESTIGATIONS

HATTIESBURG BRANCH

1118 W. PINE ST.

PHONE 583-103

PERRY S. RANSOM, JR.

W. ELLIS ALFORD

MEMBERSHIPS IN ASCE — NSPE — ASTM — ACI

MISSISSIPPI COAST SUPPLY COMPANY, INC.

Wholesalers of
Plumbing and Heating
Fixtures, Pipe, Valves and Fittings

527 CAILLAVET STREET

P.O. BOX 427

PHONE ID 2-5255

BILOXI, MISSISSIPPI

Mc Lemoire Roofing & Sheet Metal Co.

Builders Speciality Items
Dealer For Expand-O-Flash The Metal
Water Stop With Flexible Neoprene Bellows

P.O. BOX 446

PHONE 601- 483-710

MERIDIAN, MISSISSIPPI

JACKSON PAINTING CO.
CONTRACTORS
SPRAY PAINTING * BRUSH PAINTING



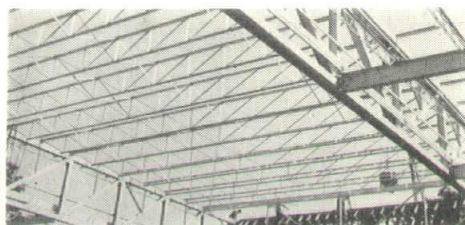
SANDBLASTING

Competent Workmanship * Fully Insured

BARNETT BLDG. FL 2-0620 - 4-1811

JACKSON, MISSISSIPPI

Tsc*



EVERYTHING IN STEEL

Fabricated Structural Steel
Longspan Joists & O. T. Joists
Steel Deck — Standard & Heavy Duty
Miscellaneous Iron — Erection

TUCKER STEEL CO., INC.

P.O. Box 231 Meridian, Miss. Phone 482-3168

CONCRETE PRODUCTS
and Supply Company, Inc.



BAYOU CASOTTE ROAD

P. O. BOX 65, PASCAGOULA, MISS.

762-8911



DRIVE-IN CANOPIES

Car Shelters
• Steel
• Aluminum

LYNN'S ORNAMENTAL IRON WORKS

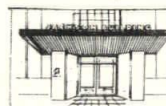
DESIGNERS — FABRICATORS — ERECTORS

- Cast Iron
- Wrought Iron
- Steel Stampings
- Aluminum Panels
- Steel Panels
- Fiberglass Panels

804 S. MAIN

582-3254

PETAL, MISS.



MARQUEES
Walkway Covers
• Steel
• Aluminum



H. R. INEBNIT

GULF COAST GLASS COMPANY

EVERYTHING IN GLASS

630 Market Street — Telephone SO 2-5922

PASCAGOULA, MISSISSIPPI

LAUREL BRICK & TILE
COMPANY, Inc.

Manufacturers

— Office and Plant —

N. MERIDIAN AVENUE

P.O. Box 583

Phone 428-7467

LAUREL, MISSISSIPPI



IN MISSISSIPPI
it's . . .

SOUTHERN GLASS

or . . .

- GLASS and GLAZING
- BUILDING MATERIALS
- BUILDING SPECIALTIES
- The BEST in SERVICE

15 E. Pine • Hattiesburg, Miss. • JU 2-1574

HATTIESBURG BLUEPRINT SERVICE

DIRECT PRINTS — PHOTO COPY PRINTS

Architects and Engineers Supplies

Authorized Dietzgen Distributor

JUniper 3-0062

719 Scooba Street

P.O. Box 828

Hattiesburg, Mississippi

TRI-SOUTHERN BLUEPRINT CO., INC.

206 SO. MAGNOLIA ST.

PASCAGOULA, MISS.

ARCHITECTURAL & ENGINEERING SUPPLIES
SURVEYING EQUIPMENT — REPRODUCTION SERVICES

"Covering the Mississippi Gulf Coast"

762-3393



FAULKNER CONCRETE PIPE COMPANY

Established 1915

- Manufacturers of Concrete Pipe •

Tel. 584-6226 • P.O. Box 992
Hattiesburg, Mississippi

PLANTS: Gulfport, Miss., Hattiesburg, Miss.
Jackson, Miss., Meridian, Miss., Mobile, Ala.

Southeastern Materials Company

Hattiesburg Brick Works

American Sand & Gravel Company

Tel. 584-6436

409 Ross Building

Hattiesburg, Miss.

W. C. WEATHERBY, JR., President Phone GR 5-1285

WEATHERBY

MATERIALS, INC.

SAND • READY MIX • CONCRETE • GRAVEL

P.O. BOX 462
MOSS POINT, MISSISSIPPI

HIGH QUALITY KILN DRIED PINE LUMBER IS AVAILABLE IN MISSISSIPPI

From the state's largest producer, furnishing jobs for 350 Mississippians. Offering a full assortment of all items of pine lumber, including mouldings and Kiln Dried 3" and 4" ROOF DECKING.

From our modern
TREATING PLANT
we offer:

PRESSURE TREATED
WOLMANIZED
lumber and timbers

RE KILN DRIED AFTER TREATMENT
paintable, clean, odorless . . . termite and
rot proof . . . the finest paintable
treatment available.

PRESSURE TREATED
PENTA
pine lumber, timbers,
small poles and
fence posts, for use
in contact
with the ground.

A. DeWeese Lumber Company, Inc.

Lumbering along since 1897

Philadelphia, Mississippi

Sales Phone 656-3211

WOLMANIZED



JOHN B. HOWARD COMPANY, Inc.

Materials for Construction

104 North Lemon Street Fleetwood 4-2346
Jackson, Mississippi

JACKSON *Ready Mix* CONCRETE

READY-MIX CONCRETE, JAX-LITE CONCRETE MASONRY, JAX-DEK PRESTRESSED CONCRETE, MISS-LITE AGGREGATE, SAND & GRAVEL

FL 4-3801

Jackson, Mississippi

P.O. Box 1292

"A HOME OWNED INDUSTRY"

JACKSON

Blue Print & Supply Co.

Frank S. Arnold, Owner

ARCHITECTS AND ENGINEERS SUPPLIES

Westwood 3-5803

P.O. Box 182

6 E. Amite Street

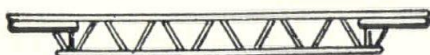
Jackson, Mississippi

Mississippi's First Blue Print Shop - - Established 1923

ELLIS SUPPLY COMPANY

"Since 1927 - - - Serving Mississippi with Steel"

JOISTS -:- STRUCTURAL STEEL



P.O. BOX 1016

PHONE 939-4584

JACKSON 5, MISSISSIPPI

BRANCH OFFICE & PLANT AT WEST POINT, MISS.

P.O. BOX 383 — PHONE 2081

WALKER JONES EQUIPMENT, INC.

75 S. GALLATIN ST. • P. O. BOX 9825 • JACKSON, MISSISSIPPI
AMERICAN ECONMOBILE
AMERICAN POWERSTAGE CO.
RCO Rammers
RNES Pumps
S BROWN Trenchers
METCO Products
AMPION Hoists & Saws
E Steel Stakes & Forms
CO Concrete Floor Grinders
SICK Concrete Mixers
EREADY Saws & Blades
ARDNER-DENVER CO.
Impressors & Air Tools
ORDON SMITH & CO.
Impressors 45-75-125
STO GAS Heaters
CKSON Wheelbarrows
& Mortar Boxes
YTON Air Pumps
D-E-VATOR Hoists
UISVILLE Ladders

MORDERN Earth Augers
MEADOW STEEL PRODUCTS
MORGEN Belt Conveyors
MULLER Mortar Mixers
PATENT Scaffolding
PHILLIPS Self-Drill Anchors
PITMAN Hydra-Lift
PRIME MOVER Buggies
SANDSTORM Blasting Equip.
SHARPE Paint Spray Equip.
SASGEN Hoists & Wenchers
SKIL Power Tools
SONNEBORN Chemicals
STAR Fasteners & Anchors
Power Loads & Studs
STOW Vibrators & Trowels
SYNTRON Power Tools
WACKER Tampers
WACO Scaffolding
WINCO Generators
SABER Posthole Augers

CONSTRUCTION EQUIPMENT

SALES • SERVICE • RENTAL

MIKE RUSSELL

PAINTING CONTRACTOR
COMMERCIAL • INDUSTRIAL



SANDBLASTING • WATERPROOF

5073 GERTRUDE DR.

372-7361

JACKSON 4, MISSISSIPPI

Architectural

Porcelain
for modernization
for new construction

Chambers

ARCHITECTURAL PRODUCTS DIVISION, Oxford, Miss.
Telephone 234-3131

Lundin and Associates Incorporated

formerly

Plastics Division of
LUNDIN-HENDRY, INC.

- ★ Architectural Plastics
- ★ Fluid Roofings
- ★ Industrial Coatings
- ★ Building Renovations
- ★ Remedial Waterproofing

JACKSON, MISS.

CONSTRUCTION NEWS, INC.

P. O. Box 679

Mount Vernon, New York

BULK RATE
U. S. POSTAGE

PAID

Permit No. 1459
New York, N. Y.

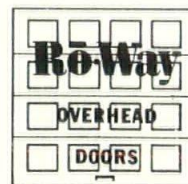
AMER INST OF ARCHTS
1735 NEW YORK AVE NW
WASHINGTON 6 D C
C-268

MISSISSIPPI ARCHITECT—A.I.A.

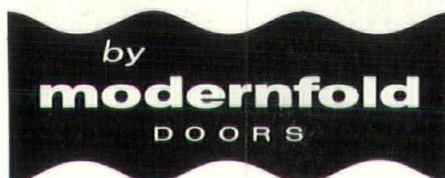
Quality Building Products

Fenestra[®]

STEEL DOORS AND FRAMES



SCHOOLS
CHURCHES
HOSPITALS



OFFICES
RESTAURANTS
MOTELS

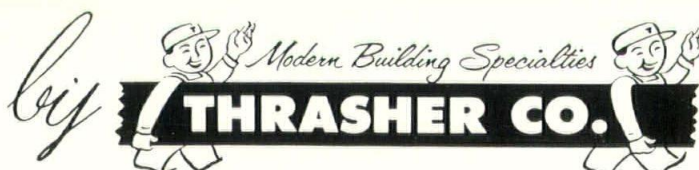
FOLDING DOORS



BUILDERS HARDWARE



METAL BUILDINGS



2689 LIVINGSTON ROAD • JACKSON, MISSISSIPPI

METAL WINDOWS—GLAZED STRUCTURAL TILE—MOVABLE PARTITIONS—ROOF DECK