

MISSOURI ARCHITECT

AMERICAN INSTITUTE
OF
ARCHITECTS
JUL 25 1966
LIBRARY

DIRECTORY ISSUE

JULY, 1966

IN THIS ISSUE:

	<u>Page</u>
President's Letter	3
14th Annual Meeting	4-16
M.A.R.A. Committees	17
Membership Roster	18-26
Life Members	27
Past Presidents	28
Special AIA Award	29
John D. Sweeney, AIA Fellow	29
M.A.R.A. Letters	30
My Way of Life	31
Advertisements	31-42
M.A.R.A. Workshop	Back Cover

OFFICERS

President

Edwin C. Waters
322-28 East Walnut
Springfield, Mo. 65806

Vice President and Editor

Roy J. Pallardy
Route 4
Jefferson City, Mo. 65101

Secretary

James T. Darrough
810 Broadway
Columbia, Mo. 65201

Treasurer

Donald D. Buller
308 Gordon Building
Sedalia, Mo. 65301

DIRECTORS

William M. Conrad
1964-1968
4149 Pennsylvania
Kansas City, Mo. 64111
Kenneth Coombs
1966-1970
18 East 11th St.
Kansas City, Mo. 64106
Arthur R. Jablonsky
1965-1969
State Bank Building
Poplar Bluff, Mo. 63901
Walter B. Kromm
1963-1967
112 S. Hanley Road
St. Louis, Mo. 63105
Richard L. Nichols
1963-1967
1461 So. Jefferson Ave.
Springfield, Mo. 65804
William D. Peckham
1966-1970
329 No. Euclid Ave.
St. Louis, Mo. 63108
Maxwell T. Sandford
1966-1967
800 Westport Road
Kansas City, Mo. 64111
Donald F. Wilson, Jr.
1965-1969
7755 Carondelet Ave.
St. Louis, Mo. 63105

EXECUTIVE DIRECTOR

Paul N. Doll
210 Monroe Street
Jefferson City, Mo. 65101

LEGAL COUNSEL

John E. Burruss, Jr.
Hendren & Andree
Central Trust Building
Jefferson City, Mo. 65101



President's Letter

To all members:

It is hoped that our new administration can keep M.A.R.A. rolling. Past administrations have done an excellent job of causing better relations between architects and in helping our profession better serve the general public.

Your officers, directors and committees intend to keep this momentum moving straight ahead.

We are extremely proud of our new committees. Please check that listing shown elsewhere in this issue. Sixty-six committeemen with fifteen officers and directors make up M.A.R.A.'s hefty leadership for the coming year.

We are sorry to lose Paul Doll's services. As our executive director during the past six years, he has added the continuity and ballast we have needed in M.A.R.A. Paul has resigned, effective January 1, 1967, to devote full time to M.S.P.E.

Let us all move ahead together in a constructive manner. We cordially invite constructive criticism and full cooperation. Let us hear from you.

Sincerely,
Edwin C. Waters
President

14th ANNUAL MEETING

Editor's Note: The following matter is taken from official minutes of the recent meeting. Space will not permit the printing of entire minutes which have been transmitted to officers, directors and committee chairmen. Members may review complete minutes by contacting these persons. **RJP.**

* * *

The annual meeting of the membership of the Missouri Association of Registered Architects was held at the Prom-Sheraton Motor Inn, Kansas City, Missouri on April 30, 1966. President Sandford called the meeting to order at 9 a.m.

Committee reports were presented and received as follows:

ANNUAL MEETING. Your annual meeting committee has left nothing undone that we know of. We have planned for your inspiration, education, illumination, recreation. We have not overlooked arranging sparkling things for your ladies.

We have fine exhibits by our very generous members of Producers Council.

The only unknown at this time is how many of you will come. We have great faith in you folks and we believe this annual M.A.R.A. convention will be the best and most in history.

Thanks for the privilege in serving you in this manner.

Respectfully submitted:

Annual Meeting Committee

Louis H. Geis, Kansas City

Frank Grimaldi, Kansas City

John D. Miller, Kansas City

Ethel Sklar, Kansas City

Frank Slezak, Kansas City, Chairman

ETHICS. The year 1965-66 has brought forth the usual number of

questions regarding misuse of the title "Architect" and unauthorized practice of architecture by package dealers, engineers and individuals who call themselves designers or developers.

We have met for the second time with the architectural division of the Registration Board to discuss an apparent case of Missouri Registration having been obtained by fraud. We are hopeful that the Board will make further investigation in the matter, so that standards for registration will be upheld.

One matter concerned a Kansas architect working for a package dealer doing work in Missouri. He was advised to conform to the law and the Kansas Registration Board was informed.

Several letters were written by legal counsel, at the committee's request regarding firms that do not have registration or certificates of authority, but were listed as architects in the telephone directory.

A letter was written to a St. Louis package dealer regarding an advertisement which was derogatory to architects. Apologies were received by telephone and in writing, and assurance given that it would not happen again also that "registered architects prepare all plans, including preliminaries and specifications."

An interesting reply was received to our letter to a non-registered individual featured in a St. Louis newspaper as an architect. In it he stated:

1. That since the dictionary defined an architect as "any builder or creator" he was in that category.
2. That he was asked to leave architectural school because of



Maxwell T. Sandford (left) accepts past president's plaque from Edward J. Thias, following induction of new officers of MARA, Architects' Day 1966. Looking on is new president, Edwin C. Waters and Mrs. Sanford. Thias was president of MARA in 1964.



Edwin C. Waters, following his installation as president of MARA, spoke briefly on the aims and purposes of the year ahead, and solicited the cooperation of the membership in helping to successfully carry out the plans and projects of the new administration.

poor grades and also because he was emotionally unprepared.

3. That he understood our concern.
4. That he was disturbed that we should be "disturbed over such a minute adjective or noun."

Contacts have been made with newspaper reporters to help them realize that the title "architect" is governed by Missouri Registration Law.

Two cases have been referred to Prosecuting Attorneys, one in Jackson County and one in Cass County, without result.

Several professional engineers have demonstrated their interest by reporting cases of non-registered individuals doing architectural work. The Board of Directors and particularly our president, Max Sandford, has worked hard and long on ethics and practice and your committee is happy to express the appreciation of the membership for their concern.

It is important that all members of MARA be observant and vigilant. Respectfully submitted:

Ethics Committee

David M. Brey, Kansas City

Harold Casey, Springfield

Walter B. Kromm III, St. Louis

Logan McKibbin, Kansas City

Paul F. Rich, Springfield

Rex L. Becker, St. Louis, Chairman

COMMUNITY PLANNING. The most important topics of concern are:

1. Highway signs as related to Federal Assistance.
2. Possible legislation relative to planning commissions.

Action by this committee has been:

1. Chairman requested MARA President to send letter to Governor and the Department of Commerce's Bureau of Public Roads, expressing MARA support to the Highway Beautification Act of 1965. This letter was written and dispatched in time

to precede the Bureau's meeting of March 22 at the Highway Department Building in Jefferson City.

The committee also expressed concern over the fact that the State Highway Department itself has some pretty sad looking signs identifying their buildings and property along our highways and some of these within the right-of-way as restricted in the Highway Beautification Act.

2. It was concluded that the legislative committee of next year be encouraged to promote legislation which would add to the already passed House Bill number 434 of the 73rd Assembly, wording which would require that if possible each county planning commission throughout the state have an architect as one of its members. As the law now only allows for county planning commissions to be formed, it was also felt that pressure should be brought to make such commissions mandatory.

This committee chairman is a member of the Missouri Planning Association and has attended all their meetings over the past two years. It is suggested to the Community Planning Committee next year that each member become affiliated with the Missouri Planning Association. For information and application forms contact Mr. Robert C. Storey, Missouri Public Service Company, 10700 East 50 Highway, Kansas City Missouri 64138. Mr. Storey is on the Board of Directors of the Missouri Planning Association.

Respectfully submitted:

Community Planning Committee

Hurst John, Columbia

Lester O. Roth, St. Louis

Sylvester Schmidt, St. Louis

Raymond Voskamp, Kansas City

Louis H. Geis, Kansas City, Chr.



John D. Sweeney, chairman, State Board of Registration for Architects and Professional Engineers, emphasizes with a shake of his fist, his intention to enforce the new registration law, which was discussed at the afternoon session on Architects' Day. To the speaker's right are: William Cornwell, Joplin and Frank Grimaldi, Kansas City, members of the State Registration Board; Gene Bushmann, State Administrative Hearing Commissioner; and Richard Stahl, panel chairman, who presided for Louis H. Geis. Mr. Geis was unable to be present due to illness.



Bruce Williams, Joplin, who for nearly two decades served as chairman and member of the State Board of Registration for Architects and Professional Engineers, receives certificate of appreciation from Maxwell T. Sandford, retiring president of MARA, during ceremonies of Architects' Day 1966.

COUNSEL'S REPORT. The last report I submitted to you was on May 10, 1965, and this report is intended to cover the period from that date to the present time.

As you know, we are currently engaged in formulating a legislative program for the 1967 General Assembly and have been working on this for some time. It is my understanding that the State Registration Board will seek certain revisions of the registration law during the forthcoming session of the General Assembly; and, if at all possible, I think we should support the changes proposed by the Board.

We have already done some work on revising the statute of limitations bill, which was House Bill No. 479 in the 1965 General Assembly, in order that we might try to eliminate some of the objections which were made to this Bill during the last session. As I have previously indicated, this is a very difficult Bill; and it is important that we present it in such form that the objections to it are minimized or eliminated.

This seems to have been a particularly active year insofar as matters of professional conduct are concerned. The cases are too numerous to go into in detail. Most of these cases involve a situation where it appears that architectural services are being provided by persons who are not registered in the State of Missouri. For the most part, we have had excellent cooperation on the inquiries we have made. Many of these cases are now closed. I do have a number of new files at the present time and I hope to be able to report some results on these within the near future.

We would be pleased to endeavor to answer any questions the membership might have concerning specific matters of interest to them with which we have been involved in the past year.

It has been a pleasure acting as counsel for M.A.R.A. during the past year, and we extend to each of the members our best wishes for a successful Architect's Day. We look forward to being of service to you in the coming year.

Respectfully submitted:

John E. Burruss, Jr., Counsel

EDUCATION AND AWARDS. We are pleased to announce the 1966 M.A.R.A. Student Award winner who will be recognized this evening at our annual banquet. He is:

Ralph Hibler

Kansas City

Architectural Student

Kansas State University

This award program will be continued annually into the foreseeable future in accordance with our adopted procedure.

Respectfully submitted:

Education and Awards Committee

R. W. Bockhorst, St. Louis

Conrad J. Curtis, Kansas City

Peter Keleti, Kansas City

Robert Marshall, Springfield

Donald F. Wilson, St. Louis, Chr.

INSURANCE AND FEES. We believe that a recommended schedule of minimum fees would be advantageous to the general public and to the architectural profession in Missouri.

For this reason this committee has studied this matter and has enlisted the support of leadership within the three AIA chapters in Missouri.

A preliminary draft for such a document has been developed. This preliminary draft is still under discussion by architectural leadership in Missouri.

Respectfully submitted:

Insurance and Fees Committee

Curtis H. Ittner, St. Louis

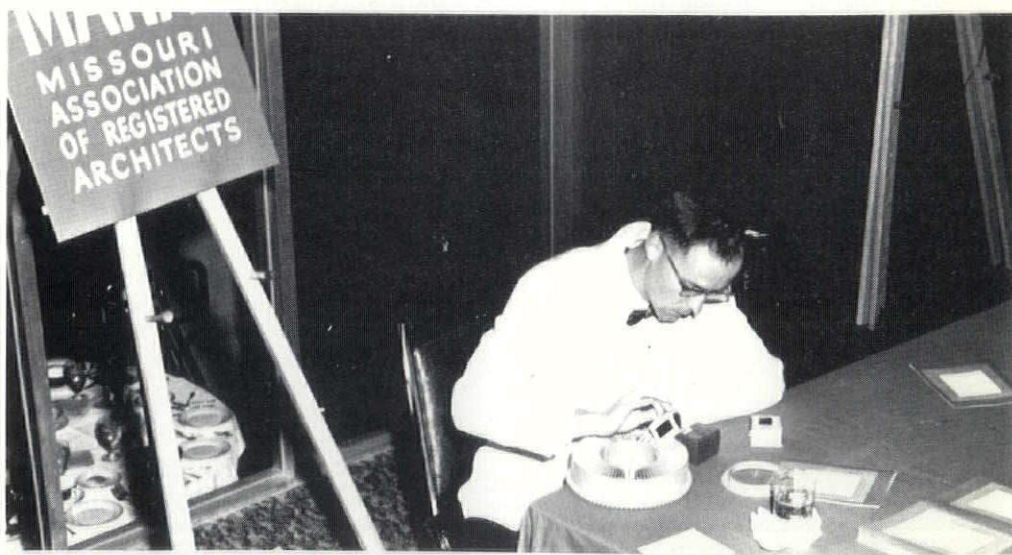
Eugene F. Johnson, Springfield

Kenneth A. McCall, Kansas City

Angus McCallum, Kansas City



Ralph Hibler, Kansas State University student, received the \$300 scholarship award at MARA's annual meeting in Kansas City, April 30. Making the presentation is Donald Wilson, chairman, Education and Awards Committee. Retiring President Max Sandford is shown at right.



Charles Hosmer, Professor of History, Principia College, presented an illustrated lecture on the need for preservation of old buildings. Mr. Hosmer is shown arranging slides to be shown during his presentation at the annual banquet of MARA.

Noland L. Stinson, Jr., St. Louis
Arthur R. Jablonsky, Poplar Bluff,
Chairman

Question was raised from the floor as to whether the committee had investigated liability insurance for errors and omissions. President Sandford remarked that this insurance is available to consulting engineers and architects through:

V. O. Schinnerer Co., Inc.
Investment Building
Washington, D.C. 20005

INTER-PROFESSIONAL. August 30, 1965 — Ed Thias and others, representing MARA, Paul Doll, and Donald Ross of MACE, Paul Olschner of MSPE appeared on panel for National BOCA convention in St. Louis.

October 8, 1965 — At a meeting on this date, MARA agreed to continue its administration agreement with MSPE for 1966 (its 7th year). It also agreed to continue to cooperate with the Missouri Interprofessional Council, and other recognized groups on matters of mutual concern and interest.

At one of our board meetings, Landscape Architects were invited to discuss their views in regard to desired registration as the Architects and Professional Engineers now are. Robert Goetz, Stuart Mertz of St. Louis, and Donald Bush of Kansas City stated their position to the board. The board took no action but agreed to keep an open mind and consider the question further.

February 24, 1966 — MARA representatives Ed Thias and Don Wilson attended a meeting of I.C.E.D. as observers. This organization consists of planners, landscape architects and engineers. It appears there are problems of overlapping areas of work which needs thorough study.

April 16, 1966 — MARA sent representatives to meet with the Mis-

souri Interprofessional Council, the prime purpose being to discuss proposed legislation effecting the several professions. Present were Max Sandford, Ed Waters, Don Buller, Jim Darorugh, Ed Thias and Roy Pallardy for MARA, John Sweeney and Paul Buchmueller of the Board of Registration, Paul Doll representing both architects and engineers, and various members representing the engineering organizations. The landscape architects also sent representatives.

It was again agreed to continue cooperation with this group to further study and develop these legislation programs.

Respectfully submitted:

Inter-Professional Committee

Elmer M. Allgeier, Joplin

Dave P. Clark, Columbia

Alburt C. Easterly, Springfield

John M. Hewitt, Kansas City

Roy J. Pallardy, Jefferson City, Chr.

LEGISLATION. The Legislation Committee for 1965 had under discussion possible bills to be introduced into the next General Assembly. In the interim, a request was received by M.A.R.A. and John D. Sweeney, Chairman of the State Registration Board to submit suggested recommendations to improve Missouri's registration statutes.

Subsequent to a review of the present statutes, it was obvious that Chapter 327 should be reviewed and drastically revised in its entirety if M.A.R.A. is to accomplish the ultimate goal of recognized professional status.

Since M.A.R.A. has been unsuccessful in the last two General Assemblies on proposed legislation, it would seem that another approach to the problem is necessary. It has been indicated that the reasons for M.A.R.A.'s failure in the passage of this legislation has been the introduction



Eugene G. Bushmann, Missouri's first Administrative Hearing Commissioner, speaker at Architects' Day luncheon. Mr. Bushmann also appeared on the panel discussion on registration of architects which was part of the afternoon program at the annual meeting.



Paul Doll (left) executive director of MARA for the past six years, and Mrs. Doll, visit during evening festivities of Architects' Day with Maxwell T. Sandford, outgoing president of MARA, and Mrs. Sandford. Doll's resignation as executive director, to devote full time to the Missouri Society of Professional Engineers, was accepted at the board of directors' meeting, to become effective January 1, 1967.

of too many bills, some of which have been controversial. In view of the fact that the Registration Board has requested submission of proposed changes in the registration law, it would seem apparent that the previous bills submitted to the State Legislature, together with other changes that should be made, could be incorporated in the recommended revisions to Chapter 327.

The inclusion of these types of changes to Chapter 327 was recently discussed with Mr. Albert Stephan, a previous Assistant Attorney General for the State of Missouri. It was his indefinite opinion that this is the only positive way to accomplish our ultimate goals in adequate legislation on registration of architects and engineers.

Therefore it is the recommendation of this Committee that the Legislative Committees from M.A.R.A., M.S.P.E., and M.I.C. work jointly towards this end.

Respectfully submitted:

Legislation Committee

Donald D. Buller, Sedalia

Thomas Byrd, Charleston

Dave P. Clark, Columbia

Glen M. Drew, Jefferson City

Roy J. Pallardy, Jefferson City

Mark S. Sharp, Kansas City

Edwin C. Waters, Springfield

Kenneth O. Brown, St. Louis, Chr.

NATURAL BEAUTIFICATION.

The members of the committee reside in various areas throughout the State and therefore no formal meeting was held during the year. This new committee for M.A.R.A. basically functioned to communicate with the public and public officials in the promotion and endorsement of over-all programs for the preservation of Missouri's natural beauty and to endorse the development of a more beautiful physical environment.

President Sandford and the com-

mittee corresponded with the President of the United States, Senator Long, Governor Hearnes and other officials stating M.A.R.A.'s concern and position in regard to beauty of Missouri.

The committee reviewed some of the Federal and State Legislation related to beautification along our highways. There has been considerable legislation proposed on the billboards, junkyards and other controls regulating beauty. The United States is being urbanized at the rate of a million acres per year. This rate apparently will be even greater.

The committee published a sixteen page brochure titled MISSOURI BEAUTY which was widely distributed through Missouri and elsewhere. The brochure was another effort of the Association to improve relations between members of the architectural profession and the general public through programs of education and cooperation.

The film "No Time for Ugliness" was shown on several occasions by members of this committee and other M.A.R.A. committees. The film has been widely shown throughout the United States by Architects.

We recommend that a continuing effort by this committee be made and hope the work this year is a start for the awareness of all Missouri Architects in speaking out for the beauty of our changing environment. Beautification is an art to which all of us must give more attention and action.

Respectfully submitted,

Natural Beautification Committee

Everett E. Butler, Springfield

Robert Braekel, Joplin

Clarence Kivett, Kansas City

Dan R. Sandford, Jr., Kansas City

John D. Sweeney, St. Louis

Edward J. Thias, St. Louis, Chairman



The cocktail party preceding the annual banquet, Architects' Day was hosted by Carthage Marble Corporation. In the receiving line as President Max Sandford arrives at the party are Roy Mayes, Jr., officer of Carthage Marble Corporation, and Mrs. Mayes.



MARA officers for 1966 in executive session, plotting the activities of the association for the year ahead. From l.: Donald Buller, treasurer; James T. Darrough, secretary; Edwin C. Waters, president; and Roy J. Pallardy, vice-president.

BRUCE WILLIAMS. At this point the presence of Bruce Williams, retired chairman of the architectural section of the State Board of Registration for Architects and Engineers, was acknowledged by President Sandford. Williams addressed a few remarks to the membership, commenting on the fine spirit of cooperation that had existed between architects and engineers during his tenure.

STATE SCHOOL OF ARCHITECTURE. Richard Stahl reported on past and present efforts to establish schools of architecture at Columbia (Missouri University), Springfield (Southwest Missouri State Teachers College), and at Kansas City (Missouri University). He reported that the effort at Springfield had been opposed by architects who thought that a 2-year program is not sufficient. He reported that the committee work was currently concentrated at Kansas City.

A.I.A. STATE ORGANIZATION. President Sandford reported on the discussions held at the previous board meeting concerning the efforts of AIA to merge with MARA which would then become the state AIA organization, and that the situation is being studied by the board. There was considerable comment from the floor parallel to that of the board meeting.

NOMINATIONS. E. J. Thias, chairman, Nominations Committee, presented the report of his committee. Additional nominations were made from the floor. The following were elected directors for four years: Kenneth Coombs, Kansas City; William D. Peckham, St. Louis.

Incumbent directors are:

For three more years: Arthur R. Jablonsky, Poplar Bluff; Donald F. Wilson, St. Louis.

For two more years: William M. Conrad, Kansas City; Roy J. Pallardy, Jefferson City.

For one more year: Walter B. Kromm, St. Louis; Richard L. Nichols, Springfield.

Past president: Maxwell T. Sandford, Kansas City.

Later the new board of directors convened to elect officers for one year. They are: President, Edwin C. Waters, Springfield; Vice President, Roy J. Pallardy, Jefferson City; Secretary, James T. Darrough, Columbia; Treasurer, Donald D. Butler, Sedalia; Executive Director, Paul N. Doll, Jefferson City.

DUES INCREASE. By motion duly made, seconded, and carried by unanimous vote of the membership present, annual M.A.R.A. dues will be \$15 beginning with the 1967 fiscal year.

This action is an amendment to M.A.R.A. Bylaws and had been properly advertised to the membership more than 30 days prior to the Annual Meeting.

BY-LAW AMENDMENTS: No other By-law Amendments were approved by the membership present at the Annual Meeting. It was agreed M.A.R.A. should have a By-Laws Committee to review proposed by-law changes prior to submission to the membership.

PAUL DOLL'S RESIGNATION ACCEPTED. Paul Doll, executive director of M.A.R.A. for the past six years, resigned from that position effective January 1, 1967 to devote full time to MSPE. His resignation was accepted by the membership. President Sandford in behalf of officers, directors and membership expressed appreciation to Mr. Doll for his effective efforts in MARA during his term of office.

PREVAILING WAGE RATES. John Freeman, Missouri Industrial Commission, spoke on the status of prevailing wage acceptance in Missouri. He noted that a majority of architects cooperate real well but that

a few do not follow the law. Mr. Freeman asked for complete cooperation from architects in this matter.

REGISTRATION PANEL: A highlight of the annual meeting was a panel discussion on registration of architects. The panel chairman was Richard Stahl who presided for Lou H. Geis who was confined to his home with illness. Panelists were: John D. Sweeney, chairman, William Cornwell and Frank Grimaldi, members, State Registration Board, and Gene R. Bushmann, State Administrative Hearing Commissioner. It is evident that Missouri is moving upward in this important work. Long applause followed this session.

CHARLES HOSMER: The banquet speaker was a big hit. Mr. Charles Hosmer, Professor of History, Principia College, presented a most interesting illustrated lecture on the need for preservation of old buildings, particularly in Central United States. He received a standing ova-

tion.

NEW OFFICERS: President Sandford superbly inducted new M.A.R.A. officers and directors listed above. He expressed sincere appreciation to retiring officers and directors for excellent and unselfish service to the profession.

At this point past president Thias came to the head table and presented an appreciation plaque to Maxwell Sandford who then became past president, a position to which he said he had been looking with pleasure.

Edwin C. Waters, new president, made appropriate comments and asked for cooperation of the membership during the coming year.

ADJOURNMENT: The annual meeting was adjourned and the membership enjoyed a dance which followed immediately.

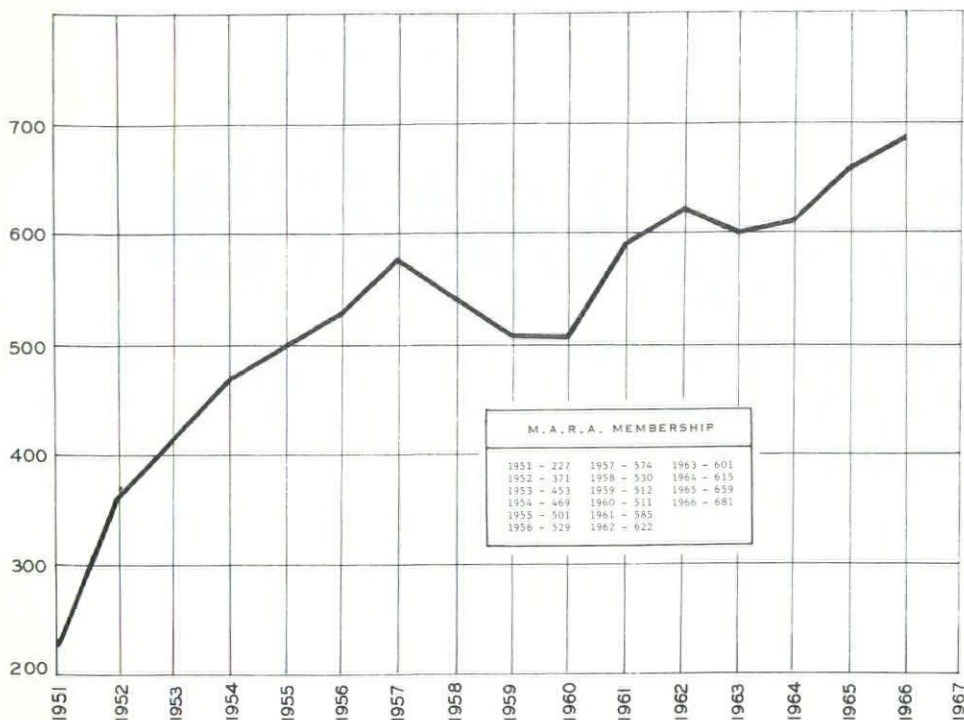
James T. Darrough, Secretary



Banquet speaker, Charles Hosmer, is Professor of History at Principia College, Elsah, Illinois. An eminent historian and writer, Mr. Hosmer's outstanding presentation at the MARA annual meeting stressed the importance of preserving beautiful old buildings in the United States, and particularly in the midwestern part of the country.



Climaxing the highly successful Architects' Day activities, April 30, was the annual banquet at the Prom-Sheraton, Kansas City. Officers, members and guests are shown enjoying this event that preceded an evening of music and dancing.



M.A.R.A. COMMITTEES

1966 - 1967

ANNUAL MEETING

- **Gary G. Bourgeois, Springfield
- **Robert W. Marshall, Springfield
- Hal W. Hawkins
- Wayne D. Johnson
- John M. Taylor

COMMUNITY PLANNING

- *Louis H. Geis, Kansas City
- E. Eugene Butler, Springfield
- George Kassabaum, St. Louis
- Russell T. Stokes, Jr., St. Louis
- Raymond L. Voskamp, Kansas City

BY-LAWS

- *William M. Conrad, Kansas City
- Elmer M. Allgeier, Joplin
- Pleas E. Hyatt, Kennett
- John D. Sweeney, St. Louis

EDUCATION & AWARDS

- *Frank R. Slezak, Kansas City
- Linn B. Elam, St. Louis
- Donald F. Wilson, Jr., St. Louis

ETHICS

- **David M. Brey, Kansas City
- **Rex Becker, St. Louis
- Harold Casey, Springfield
- J. C. Cleavinger, Moberly
- Angus McCallum, Kansas City

INSURANCE AND FEES

- *Herbert D. Duncan, Kansas City
- Robert H. Goodin, Springfield
- Arthur R. Jablonsky, Poplar Bluff
- Robert J. Koppes, St. Louis
- Noland L. Stinson, St. Louis

INTERPROFESSIONAL

- *Roy L. Pallardy, Jefferson City
- Frank V. Grimaldi, St. Louis
- C. Wynn Brady, Columbia

LEGISLATION

- *Donald L. Wilson, Jr., Kansas City
- Wendell D. Anderson, Kansas City
- Kenneth O. Brown, St. Louis
- Fred E. Dormeyer, Jr., Cape Girardeau
- Ralph Fournier, St. Louis
- Neal O. Reyburn, Sedalia

LONG RANGE PLANNING

- *David W. Pearce, St. Louis
- Rex L. Becker, St. Louis
- David M. Brey, Kansas City
- Harold A. Casey, Springfield
- David P. Clark, Columbia
- Robert Elkington, St. Louis
- John M. Hewitt, Kansas City
- John C. Monroe, Jr., Kansas City
- Maxwell T. Sandford, Kansas City
- Richard P. Stahl, Springfield
- John D. Sweeney, St. Louis
- Edward J. Thias, St. Louis
- Luther O. Willis, Kansas City

MEMBERSHIP

- *James T. Darrough, Columbia
- Angelo G. Corrubio, St. Louis
- Gene Lefebvre, Kansas City
- Richard L. Nichols, Springfield

NATURAL BEAUTIFICATION

- *Edward J. Thias, St. Louis
- Donald Buller, Sedalia
- William A. Cornwell, Joplin
- Fred E. Dormeyer, Jr., Cape Girardeau
- Glen M. Drew, Jefferson City
- King Graf, St. Louis
- Richard Ramsey, St. Louis
- Paul Rich, Springfield
- Dan Sandford, Jr., Kansas City

STATE SCHOOL

- **G. Peter Keleti, Kansas City
- **Richard Stahl, Springfield
- Roland Bockhorst, St. Louis
- Hurst John, Columbia

*Chairman

**Co-chairman

MEMBERS OF M.A.R.A. (681)

AS OF JUNE 20, 1966

ABELLA, NARCISO E., 3412 WASHINGTON ST., KANSAS CITY 64111
 ABRAHAMS, LEONARD, 7731 GANNON, UNIVERSITY CITY 63124
 ALBRECHT, ROBERT D., 1130 MEADOWGRASS CT., FLORISSANT 63031
 ALESSI, DOMINICK A., 2365 HALLWOOD DRIVE, ST. LOUIS 63136
 ALLEN, CLARD L., 760 ROBINWOOD DRIVE, FLORISSANT 63033
 ALLGEIER, ELMER M., 94 CANTERBURY LANE, JOPLIN 64801
 AMSPACHER, JOE W., 2029 E. GRAND, SPRINGFIELD 65804
 ANDERSON, WENDELL D., 12407 EAST 46TH PLACE, INDEPENDENCE 64050
 ANDREWS, LEWIS P., 406 WEST 34TH STREET, KANSAS CITY 64111
 ANSET, HERBERT C., 4432 WASHINGTON STREET, KANSAS CITY 64111
 ARMS, ARTHUR HAROLD, 309 WEST JACKSON BLVD., CHICAGO, ILLINOIS 60606
 ARMSTRONG, HARRIS, 180 SOUTH SAPPINGTON ROAD, KIRKWOOD 63122
 ASBY, BILLY G., 613 MINNESOTA AVENUE, KANSAS CITY, KANSAS 66101
 AVIS, FRANCIS GILMORE, 941 NO. TAYLOR AVENUE, KIRKWOOD 63122

BAKER, JAMES ROBERT, 8300 MADISON AVENUE, KANSAS CITY 64114
 BALES, RAYMOND E., JR., 4500 E. 48 TERR., KANSAS CITY 64118
 BARNES, BRUCE F., PATTERSON 63956
 BARNHARDT, CARLYLE, 2203 HARVARD, INDEPENDENCE 64052
 BARTLING, GEORGE R., 2748 EAST 11TH STREET, ODESSA, TEXAS 79762
 BARTON, WILLIAM CLAYTON, 4711 W. 65 ST., PRAIRIE VILLAGE, KANSAS 66208
 BARU, GERALD B., 1016 BALTIMORE, KANSAS CITY 64105
 BATHE, FRANK A., JR., 7523 PARK TOWN NORTH, ST. LOUIS 63136
 BAUER, HENRY H., 1964 N. SIGNAL HILL, KIRKWOOD 63122
 BAYERL, EMIL O., 500 KNICKERBOCKER PLACE, KANSAS CITY 64111
 BEAR, JOSEPH THOMAS, JR., 4444 WESTMINSTER PLACE, ST. LOUIS 63108
 BEATTY, HAMILTON, 15128 TERRACE ROAD, EAST CLEVELAND, OHIO 44112
 BECKER, REX L., 705 OLIVE STREET, ST. LOUIS 63101
 BEIDLER, HERBERT B., 952 NORTH MICHIGAN AVENUE, CHICAGO, ILLINOIS 60611
 BEISBARTH, CARL A., 8910 NORTH SWAN CIRCLE, ST. LOUIS 63144
 BERG, GEORGE EDWARD, 11019 MANCHESTER RD., KIRKWOOD 63122
 BERGER, F. A., JR., 1501 LOCUST STREET, ST. LOUIS 63101
 BERNOUDY, WILLIAM A., 281 NORTH LINDBERGH BLVD., ST. LOUIS 63141
 BERRI, LAURANCE P., 9109 BUXTON DRIVE, CRESTWOOD 63126
 BETTS, CHARLES J., 110 SOUTH DOWNEY AVENUE, INDIANAPOLIS, INDIANA 46219
 BEUC, RUDOLPH, JR., 118 EAST LOCKWOOD, WEBSTER GROVES, 63119
 BEUTTLE, W. LEE, 14TH AND NEBRASKA STREETS, SIOUX CITY, IOWA 51501
 BIRITZ, J. S., 1063 JENNINGS STATION ROAD, ST. LOUIS CO. 63137
 BISCHOF, MILTON J., JR., 256 CHAMBERS ROAD, ST. LOUIS 63137
 BLESSING, ROGER F., JR., 7208 LOWELL AVENUE, OVERLAND PARK, KANSAS 66204
 BLOOM, BERNARD, 400 WASHINGTON AVENUE, ST. LOUIS 63102
 BOARDMAN, JOHN L. E., 801 E. THEMIS ST., CAPE GIRARDEAU 63701
 BOCKHORST, R. W., 900 BERNICE, KIRKWOOD 63122
 BOND, WILLIAM W., JR., 168 GROVE PARK CIRCLE, MEMPHIS, TENNESSEE 38117
 BOURGEOIS, GARY G., 758 E. LOMBARD, SPRINGFIELD 65806
 BOWDEN, WILLIAM A., JR., P. O. BOX 523, SIKESTON 63801
 BOWEN, S. W., III, 1467 E. BERKELEY ST., SPRINGFIELD 65804
 BOWER, EDMUND, 3543 BROADWAY, KANSAS CITY 64111
 BOWKER, LEON JACK, 1500 MEADOWLAKE PARKWAY, KANSAS CITY 64114
 BOYLE, KENNETH R., 8017 FLOYD STREET, OVERLAND PARK, KANSAS 66204
 BRADFORD, LEROY D., 3900 SOUTH CRYSLER, INDEPENDENCE 64050
 BRADLEY, JACK R., JR., 2035 BIRCHWOOD LANE, TOPEKA, KANSAS 66604
 BRADLEY, JOHN WILLIAM, JR., P. O. BOX 539, CARBONDALE, ILLINOIS 62901
 BRADY, CHARLES WYNN, 909 CHERRY, COLUMBIA 65201
 BRAECKEL, ROBERT, 1204 BROADWAY, JOPLIN 64801
 BRENNEMAN, RODNEY DALE, 7405 GODDARD, SHAWNEE, KANSAS 66203
 BREWER, LELAND B., 1010 PINE STREET, ST. LOUIS 63101
 BREY, DAVID M., 306 EAST 12TH STREET, KANSAS CITY 64106
 BROWN, KENNETH O., 426 CITY HALL, ST. LOUIS 63103
 BROWN, M. DWIGHT, 1016 BALTIMORE, KANSAS CITY 64105
 BROWN, WILLIAM S., 400 PARK AVENUE, NEW YORK, NEW YORK 10022
 BROWNE, BERNARD G., 4929 HOLLY STREET, KANSAS CITY 64112
 BRUNNER, OTTO, 2007 ASHLAND AVE., ST. JOSEPH 64506
 BRYAN, JOHN A., 21 BENTON PLACE, ST. LOUIS 63104

BRYANT, ROBERT E., 1519 W. HINES, MIDLAND, MICHIGAN 48640
 BUCHMUELLER, R. P., 412 TANNER, P. O. BOX 548, SIKESTON 63801
 BUCHMUELLER, ROLAND P., 10425 OLD OLIVE STREET RD., ST. LOUIS 63141
 BULLER, DONALD D., 308 GORDON BLDG., SEDALIA 65301
 BURKS, VERNER I., 7 NORTH 7TH STREET, ST. LOUIS 63101
 BURNS, RAYMOND R., 55 HIGHGATE ROAD, ST. LOUIS 63124
 BUSCH, ULRICH W., JR., 417 ELM, WASHINGTON 63090
 BUTLER, EVERETT EUGENE, EMPIRE BLDG., SPRINGFIELD 65806
 BUXELL, IRVIN J., JR., 414 ALGONQUIN DRIVE, MANCHESTER 63011
 BYRD, THOMAS SWAYNE, 508 NORTH MAIN, CHARLESTON 63834

 CAMPBELL, JOHN A., 9353 PARKSIDE DR., BRENTWOOD 63144
 CAMPBELL, W. EVANS, 737 WEST JEWEL AVENUE, KIRKWOOD 63122
 CANN, WILLIAM F., 7114 WATERMAN, UNIVERSITY CITY 63130
 CANTOR, MARSHALL S., 7318 MILAN, UNIVERSITY CITY 63130
 CAOLO, VITO, 57 PEARL STREET, SPRINGFIELD, MASS. 01105
 CASEY, HAROLD A., 1055 EAST KINGSBURY, SPRINGFIELD 65804
 CERNIK, JOSEPH A., 111 NORTH FOURTH STREET, ST. LOUIS 63102
 CHAMPLIN, ROBERT E., 4550 MAIN STREET, KANSAS CITY 64111
 CHAPMAN, TERRY W., 2106 WEST 75TH STREET, SHAWNEE MISSION, KANSAS 66208
 CHARLE, EDWIN G., 4975 BANCROFT AVENUE, ST. LOUIS 63109
 CHINN, PON Y., 5 WILLIS AVE., COLUMBIA 65201
 CHRISTIE, JOSEPH I., 1333 CHESHIRE LANE, WEBSTER GROVES 63119
 CICCIO, JOSEPH A., 222 FORBES RD., BRAINTREE, MASS. 02184
 CIKA, GEORGE H., 5984 KERTH ROAD, ST. LOUIS 63128
 CIUFFA, ANTHONY, 6 SUNVIEW LANE, CREVE COEUR 63141
 CLARK, DAVE P., 417 WEST WALNUT ST., COLUMBIA 65201
 CLARK, EARL D., JR., 5001 REINHARDT DRIVE, KANSAS CITY, KANSAS 66103
 CLEAVINGER, J. KAY, 211 REED, MOBERLY 65270
 CLENEAY, W. ALLEN, 17 LAMERTIN LANE, ST. LOUIS 63122
 CONRAD, WILLIAM M., 6120 WEST 69TH STREET, OVERLAND PARK, KANSAS 66204
 COOMBS, KENNETH E., 1347 EAST 109TH TERRACE, KANSAS CITY 64131
 COOPER, CECIL E., 418 COMMERCE TRUST BLDG., KANSAS CITY 64106
 CORNWELL, WILLIAM A., 116 WEST 4TH, JOPLIN 64801
 CORRUBIA, ANGELO G., 819 BLOSSOM LANE, ROCK HILL 63119
 COSTLOW, MILTON, 4441 MADISON, KANSAS CITY 64111
 COSTON, TRUETT H., 323 MADISON, OKLAHOMA CITY, OKLAHOMA 73111
 COWLING, ROBERT, 1221 BALTIMORE, KANSAS CITY 64105
 COX, DAVID F., 1002 MEADOWRIDGE DRIVE, KIRKWOOD 63122
 CRAGIN, WILLIAM J., 2211 COUNTRY LANE, COLUMBIA 65201
 CREIGHTON, HENRY B., 146 S. ELLIS, CAPE GIRARDEAU 63701
 CROWLEY, R. JEROME, 216-16 106TH AVE., QUEENS VILLAGE, LONG ISLAND NEW YORK 11129
 CURTIS, CONRAD J., 4324 MAIN STREET, KANSAS CITY 64111
 CURTIS, NATHANIEL C., JR., 2475 CANAL STREET, NEW ORLEANS, LOUISIANA 70119
 CUSTER, BETTY LOU, 7440 UNIVERSITY DRIVE, ST. LOUIS 63130

 DAHL, GEORGE L., 2101 NORTH ST. PAUL STREET, DALLAS, TEXAS 75201
 DALY, LEO A., 8600 INDIAN HILLS DRIVE, OMAHA, NEBRASKA 68114
 DALY, WILLIAM T., 3207 OLIVE STREET, ST. LOUIS 63103
 DANNA, CHARLES, 1930 DOUGHERTY FERRY ROAD, KIRKWOOD 63122
 DARROUGH, JAMES THOMAS, P. O. BOX 724, COLUMBIA 65201
 DAVIDSON, F. E., 1791 BRECKENRIDGE DR., N.E., ATLANTA, GA. 30329
 DAVIS, ARTHUR Q., 2475 CANAL STREET, NEW ORLEANS, LOUISIANA 70119
 DAVIS, AUBREY R., 2516 W. 91ST, LEAWOOD, KANSAS 66206
 DAVIS, HAROLD R., 626 EAST 41ST TERR. NO., KANSAS CITY 64116
 DAW, JOHN LAWRENCE, 912 BALTIMORE, KANSAS CITY 64105
 DEAN, JOHN MC HALE, 9216 CLAYTON ROAD, ST. LOUIS 63124
 DEARING, GERALD A., 7533 CHARLOTTE, KANSAS CITY 64131
 DENT, JAMES L., 1009 BALTIMORE, KANSAS CITY 64105
 DERROUGH, BURNS H., 322-30 E. WALNUT, SPRINGFIELD 65806
 DE TIENNE, MART E., 8416 ENGLER AVE., ST. LOUIS 63114
 DEWITT, L. V., 505 BRADLEY CT., DECATUR, ILLINOIS 62521
 DI CAMPO, JOSEPH EDWARD, 1050 FERGATE LANE, CREVE COEUR 63141
 DIECKMANN, EDWARD W. H., 256 CHAMBERS ROAD, ST. LOUIS 63137
 DOHM, DANIEL, JR., 7358 MILAN, UNIVERSITY CITY 63115
 DONALDSON, DONALD C., R. R. 2, BOX 169, HIGH RIDGE 63049
 DORMEYER, FRED E., JR., 120 NORTH SPRIGG STREET, CAPE GIRARDEAU 63701
 DOUGLAS, LAWRENCE L., TERMINAL WAREHOUSE BLDG., SOUTH ST. JOSEPH 64501
 DRAKE, CECIL RAY, 10425 OLDOLIVE STREET RD., ST. LOUIS 63141
 DREW, GLEN M., 118A EAST HIGH ST., JEFFERSON CITY 65101
 DULGEROFF, VIRGIL H., 3902 FRANKLIN AVENUE, GRANITE CITY, ILLINOIS 62523
 DUNCAN, HERBERT E., 501 JOHN HANCOCK BLDG., 800 WEST 47TH ST., KANSAS CITY 64112
 DUNCAN, HERBERT EWING, JR., 501 JOHN HANCOCK BLDG., 800 WEST 47TH ST., KANSAS CITY, 64112
 DU VALL, KENNETH A., 1000 WASHINGTON, ST. LOUIS 63101

EBINGER, JOHN, 13050 WEST BIG BEND, ST. LOUIS 63122
 ECKART, RUTH, 502 WEST MAIN ST., COLLINSVILLE, ILLINOIS 62234
 ECKLES, JULIAN F., 317 N. IITH ST., ST. LOUIS 63101
 EDWARDS, KEITH, 9713 BALTIMORE, KANSAS CITY 64114
 EDWARDS, RONALD R., 1150 MAGNET DRIVE, OLIVETTE 63132
 EGGEN, JOHN A., JR., 4600 WEST 79TH STREET, PRAIRIE VILLAGE, KANSAS 66208
 EIBER, ROLLIN R., 511 SEVENTEENTH STREET, WILMETTE, ILLINOIS 60091
 EILERING, RONALD L., 107 WEST WASHINGTON ST., BELLEVILLE, ILLINOIS 62220
 EISENSTEIN, H. LOUIS, 8031 GANNON, UNIVERSITY CITY 63130
 ELAM, LINNELL B., 3 MARCEL COURT, FERGUSON 63135
 ELDRIDGE, JAMES B., 7520 WEST 63RD ST., SHAWNEE MISSION, KANSAS 66202
 ELKINGTON, ROBERT, 7916 KINGSBURY AVENUE, ST. LOUIS 63105
 ELLIS, GENE DIRK, 1009 BALTIMORE, KANSAS CITY 64105
 ENDERLING, WAYNE, 1301 TRELANE, ST. LOUIS, 63126
 ENTZEROOTH, ROBERT, 7701 FORSYTH, ST. LOUIS 63105
 ERWIN, S. RANDOLPH, 744 CHERRY, SPRINGFIELD 65806
 ESTERLY, ALBURT C., 400 MC DANIEL BLDG., SPRINGFIELD 65806
 ETZ, CARL E., 9507 MILTON, OVERLAND 63114
 EVERITT, ROBERT S., 2305 COMMERCE TOWER, KANSAS CITY 64106

FAIRHURST, DONALD P., 1016 BALTIMORE, KANSAS CITY 64105
 FELLHAUER, MARTIN A., 3238 TENNYSON SQUARE, ST. LOUIS 63143
 FENNEL, JAMES E., 1401 FAIRFAX TRAFFICWAY, KANSAS CITY, KANSAS 66115
 FEUERHAHN, A. H., 1551 WHITENER STREET, CAPE GIRARDEAU 63701
 FEY, EARL ALBERT, 8420 DELMAR BLVD., ST. LOUIS 63124
 FIELDS, CLIFFORD R., BOX N, MT. VERNON, ILLINOIS 62864
 FINK, KENNETH W., 7641 JARBOE, KANSAS CITY 64114
 FISHER, FRANK HARRISON, 4509 W. 78TH STREET, PRAIRIE VILLAGE, KANSAS 66208
 FISHMAN, MARTIN M., 4605 LINDELL BLVD., ST. LOUIS 63108
 FOLGER, EVANS, 1009 BALTIMORE AVENUE, KANSAS CITY 64115
 FOLTZ, ROBERT E., 1918 E. EDISON ROAD, SOUTH BEND, INDIANA 46617
 FORD, RONALD W., 7800 ASH, SHAWNEE MISSION, KANSAS 66208
 FORMAN, W. EMIL, 41 CORNWALL LANE, PORT WASHINGTON, L. I., NEW YORK
 FORTEL, KENNETH E., 1016 ROBERT AVENUE, FERGUSON 63135
 FOURNIER, RALPH A., 10315 CLAYTON ROAD, ST. LOUIS 63131
 FOUST, BYRON, 804 W. CAPE ROCK DR., CAPE GIRARDEAU 63701
 FOX, BARRIE B., 7614 WYDOWN BLVD., CLAYTON 63105
 FRANKLIN, GEORGE W., 2921 WEST 73RD STREET, PRAIRIE VILLAGE, KANSAS 66208
 FREEMAN, DONALD L., 10 FIELDING ROAD, ST. LOUIS 63124
 FRIEZE, CLARENCE I., JR., 2904 WEST 73RD STREET, PRAIRIE VILLAGE, KANSAS 66215
 FRY, LOUIS EDWIN, 7600 GEORGIA AVE., N.W., WASHINGTON, D. C. 20012
 FULLER, A. B., JR., 6317 SOUTHWOOD, CLAYTON 63105
 FULLER, EDWARD M., 503 SAGAMORE LANE, KANSAS CITY 64116
 FULLER, SANTRY C., 2566 NORTH CAMPBELL, TUSCON, ARIZONA 85719
 FULLERTON, W. B., JR., 15 W. 10TH ST., KANSAS CITY 64106

GABLER, CORNELIUS L. T., 3300 BOOK BUILDING, DETROIT, MICHIGAN 48226
 GALE, DANIEL B., 26 BROOKWOOD ROAD, ST. LOUIS 63131
 GATCHELL, HAROLD E., 8128 LAKE ANDRITA AVE., SAN DIEGO, CALIF. 92119
 GAZA, GEORGE, APT. 801, 9953 LEWIS - CLARK BLVD., ST. LOUIS 63136
 GEIS, LOUIS H., 704 DAVIDSON BLDG., KANSAS CITY 64118
 GESELSCHAP, J. C., 8 WINSLOW LANE, KIRKWOOD 63122
 GIESE, WALTER R., 406 WEST 109TH STREET, KANSAS CITY 64114
 GILBERT, J. MILES, 8101 WEST MAIN, BELLEVILLE, ILLINOIS 62223
 GILLESPIE, WILES L., 4017 LOCUST, KANSAS CITY 64104
 GINSBERG, MARVIN, 10225 CHAUCER AVE., CLAYTON 63114
 GLAZE, A. S., 16TH AND BUCHANAN, ST. JOSEPH 64512
 GODWIN, GROVER, 164 NORTH MERAMEC AVENUE, CLAYTON 63105
 GOFF, BRUCE ALONZO, 5110 MAIN ST., KANSAS CITY 64112
 GOODIN, ROBERT H., 3184 EAST SUNSHINE, SPRINGFIELD 65804
 GOODMAN, CHARLES MORTON, 814 18TH STREET, N.W., WASHINGTON, D. C. 20006
 GORDON, EDWARD FRANCIS, III S. BEMISTON, ST. LOUIS 63105
 GORNET, E. DONALD, 91 BELLERIVE ACRES, ST. LOUIS 63121
 GRAF, KING, 845 CLARK AVENUE, WEBSTER GROVES 63119
 GRAHAM, JOHN, JR., 1426 FIFTH AVENUE BLDG., SEATTLE, WASHINGTON 98101
 GRANSTEDT, JOHN FREDERICK, 9341 ENSLEY LANE, SHAWNEE MISSION, KANSAS 66206
 GRAVES, DEAN W., 5328 WEST 67TH ST., MISSION, KANSAS 66208
 GRIMALDI, FRANK, 5505 OAK STREET, KANSAS CITY 64113
 GRUENINGER, RAYMOND X., 8000 BONHOMME AVENUE, CLAYTON 63105
 GUNN, CLAUDE N., 12415 MICHIGAN, KANSAS CITY 64146

HAECKEL, LESTER C., 911 LOCUST STREET, ST. LOUIS 63101
 HAFNER, JACK E., 929 SOUTH 23RD STREET, QUINCY, ILLINOIS 62301
 HALL, RALPH COLE, 9240 CLAYTON ROAD, ST. LOUIS 63126
 HAMMOND, FRED R., 42 PRICEWOODS, OLIVETTE 63132
 HANNER, VERDELL, 21 EAST ACTON AVENUE, WOOD RIVER, ILLINOIS 62095
 HANSEN, NEAL, 6811 WEST 63RD ST., CLOVERLEAF BLDG., OVERLAND PARK, KANSAS 66202
 HARKNESS, GEORGE, III, 6002 EITMAN AVENUE, ST. LOUIS 63139
 HARMS, JOE G., 9640 CLAYTON ROAD, ST. LOUIS 63124
 HASKEW, WALTER, P. O. BOX 13, BRANSON 65616
 HASTINGS, BRYCE, 1262 CHARMWOOD, KIRKWOOD 63122
 HAWKINS, HAL WOODBRIDGE, 1432 BEDFORD RD., SPRINGFIELD 65804
 HAYLETT, WARD H., JR., 219 W. 68TH ST., KANSAS CITY 64111
 HEIMBERG, RALPH, 4147 WESKAN, BRIDGETON 63044
 HELLMUTH, GEORGE F., 1430 OLIVE ST., ST. LOUIS 63103
 HENDLER, ARNOLD F., 6910 MORNINGSIDE, HOUSTON, TEXAS 77025
 HERMAN, LAWRENCE M., 8921 IROQUOIS DRIVE, OLIVETTE 63132
 HERNDON, B. A., JR., 744 CHERRY ST., SPRINGFIELD 65806
 HERR, JNO R., 1526 EAST 19TH STREET, TULSA, OKLAHOMA 74120
 HERRING, JOHN L., 8920 W. 80TH ST., OVERLAND PARK, KANSAS 66204
 HERSCHMANN, TERMINAL WAREHOUSE BLDG., SO. ST. JOSEPH 64501
 HEWITT, JOHN M., 607 WESTPORT ROAD, KANSAS CITY 64111
 HILLMAN, VERN E., 715 SOUTH GLENSTONE, SPRINGFIELD 65802
 HIRSCH, O. B., 6236 WATERMAN AVENUE, ST. LOUIS 63130
 HOENER, THEODORE MANN, 4227 WATSON ROAD, ST. LOUIS 63109
 HOFFMAN, JOSEPH G., 8429 ROSELIND CT., ST. LOUIS 63114
 HOHLT, RALPH R., 44 GRANADA WAY, ST. LOUIS 63124
 HOLCOMB, JOE C., 2628 EAST CRESTVIEW, SPRINGFIELD 65804
 HOLLANDER, RONALD L., 1518 LAUGHLIN, ST. LOUIS 63130
 HOOD, JACK KENT, 2367 EAST BROADMOOR, SPRINGFIELD 65804
 HORN, FRANK W., 720 W.C.U. BLDG., QUINCY, ILLINOIS 62301
 HOWISON, RALPH F., 7800 GARDEN AVENUE, ST. LOUIS 63119
 HUFFMAN, JOHN A., 5701 CENTRAL, KANSAS CITY 64113
 HUGHES, EUGENE B., 28 SOUTH MAIN, WEBB CITY 64870
 HUNING, CHARLES W., 1103 HOWELL, ST. LOUIS 63115
 HUNTER, BENJAMIN R., 427 E. 55TH, KANSAS CITY 64110
 HUTCHINSON, GEORGE A., 309 WEST JACKSON BLVD., CHICAGO, ILLINOIS 60606
 HYATT, PLEAS E., 203 POOL ST., KENNETT 63857

IMBS, THOMAS JUSTIN, 225 DELAWARE AVENUE, BUFFALO, NEW YORK 14202
 ITTNER, H. CURTIS, 911 LOCUST STREET, ST. LOUIS 63101
 ITTNER, WILLIAM B., 911 LOCUST STREET, ST. LOUIS 63101

JABLONSKY, ARTHUR R., STATE BANK BLDG., POPLAR BLUFF 63901
 JACKSON, ROBERT W., 911 MAIN, ROOM 1700, KANSAS CITY 64105
 JAMESON, JOHN E., 8800 HORTON, SHAWNEE MISSION, KANSAS 66207
 JARCHOW, GORDON C., 11110 BRISTOL TERRACE, KANSAS 64134
 JARVIS, ROBERT B., 7003 BREELEY, BETHEL, KANSAS 66009
 JENKS, ROBERT E., 1426 WEST 50TH TERRACE, KANSAS CITY 64112
 JOCKENHOEFER, T. J., JR., 117 HELFENSTEIN AVE., ST. LOUIS 63119
 JOHNSON, MAURECE C., 112 SO. HANLEY RD., ST. LOUIS 63105
 JOHN, HURST, BOX 512, COLUMBIA 65201
 JOHNS, EVERETT, 510 FARAON STREET, ST. JOSEPH 64501
 JOHNSON, ALFRED J., 3550 WELLAND, BRIDGETON 63044
 JOHNSON, ARTHUR R., 9216 CLAYTON ROAD, ST. LOUIS 63124
 JOHNSON, EUGENE F., 400 EAST MC DANIEL STREET, SPRINGFIELD 65806
 JOHNSON, J. E., 5245 FAIRVIEW, ST. LOUIS 63139
 JOHNSON, ROBERT CLARK, 7030 GRANDVIEW DRIVE, SHAWNEE MISSION, KANSAS 66204
 JOHNSON, WAYNE D., 2029 E. GRAND, SPRINGFIELD 65804
 JOHNSON, WILLIAM HENRY, 2214 TRACY STREET, KANSAS CITY 64108
 JOHNSON, WILLIAM R., 207 ROYAL PALM WAY, PALM BEACH, FLORIDA 33482
 JONES, LAWRENCE M., 2201 RED BRIDGE TERRACE, KANSAS CITY 64131
 JONES, WALK C., JR., 1215 POPLAR AVENUE, MEMPHIS, TENNESSEE 38104
 JONES, WARREN, 1427 NORTH HANLEY ROAD, UNIVERSITY CITY 63130
 JONES, WILLIAM H., 1927 SOUTH DOLLISON, SPRINGFIELD 65804
 JOURDAN, J. CARL, 632 LAW BLDG., KANSAS CITY 64106

KALASZ, STEPHEN D., 2495 HARTLAND AVENUE, OVERLAND 63114
 KANE, EDWARD A., BOHM BLDG., EDWARDSVILLE, ILLINOIS 62025
 KASSABAUM, GEORGE, 1430 OLIVE ST., ST. LOUIS 63103
 KASTER, ROGER A., 10701 WEST 92ND ST., OVERLAND PARK, KANSAS 66214
 KELETI, PETER, 4310 GILLHAM ROAD, KANSAS CITY 64110

KEMP, FRED M., 34 HUNTLEIGH WOODS, HUNTLEIGH 63131
 KESSLER, MELVIN E., 598 MADISON AVENUE, NEW YORK, NEW YORK 10022
 KING, BOYD E., 3716 WEST 48TH STREET, SHAWNEE MISSION, KANSAS 66205
 KIVETT, CLARENCE, 1016 BALTIMORE AVENUE, KANSAS CITY 64105
 KLING, VINCENT G., 917 CORINTHAN AVENUE, PHILADELPHIA, PA. 19130
 KLINGENSMITH, PAUL, 4232 WEST PINE, ST. LOUIS 63108
 KNOESEL, ERWIN, III WEST LOCKWOOD AVENUE, WEBSTER GROVES 63119
 KNOTT, EDWARD E., 5752 WESTMINSTER PL., ST. LOUIS 63112
 KOBERLING, JOS., R., 569 SOUTH PEORIA AVENUE, TULSA, OKLAHOMA 74120
 KOCH, WILLIAM J., JR., 5107 ROCK CREEK LANE, MISSION, KANSAS 66205
 KOELLE, ARTHUR E., 7459 STRATFORD AVE, UNIVERSITY CITY 63130
 KOENIG, C. A., 8936 LACLEDE STATION ROAD, ST. LOUIS 63123
 KOERBER, EDWARD W., 2511 ASPEN ST., PHILADELPHIA, PA. 19130
 KOPPEL, ROBERT J., 5001 W. 66TH TERR, PRAIRIE VILLAGE, KANSAS 66208
 KOSCHER, PETER C., 1002 LAUREL, CARBONDALE, ILL. 62901
 KOSTECKI, LEONARD R., 2530 YORKSHIRE DRIVE, ST. LOUIS 63031
 KRAJCOVIC, 6400 MARQUETTE AVENUE, ST. LOUIS 63109
 KRAMER, GERHARDT, 9640 CLAYTON ROAD, ST. LOUIS 63124
 KRATZ, EDWIN G., 2101 EAST 73RD STREET, KANSAS CITY 64132
 KRIEGSHAUSER, ARTHUR F., 4705 HAMBURG AVENUE, ST. LOUIS 63123
 KROEPFEL, KENNETH J., 7608 HORATIO DRIVE, BEL NOR 63121
 KROMM, WALTER B., 112 SO. HANLEY RD., ST. LOUIS 63105
 KRUG, HENRY D., JR., 310 WARD PARKWAY, KANSAS CITY 64112
 KUNZ, VICTOR JOSEPH 6806 ALEXANDER STREET, ST. LOUIS 63116
 KURZ, FRANK W., JR., 10442 BELLEFONTAINE RD., ST. LOUIS 63137

LACY, JOSEPH N., 20 DAVIS STREET, HAMDEN, CONNECTICUT 06514
 LANDBERG, KURT EDWARD, 722 CHESTNUT ST., ST. LOUIS 63101
 LANDRUM, HAROLD JOE, 329 NO. EUCLID, ST. LOUIS 63108
 LANE, WILLIAM BODLEY, 101 SO. HARRISON, KIRKWOOD 63122
 LANGSTON, PERRY C., 7284 MARYLAND AVENUE, UNIVERSITY CITY 63130
 LAW, BRUCE E., 1103 EAST 47TH STREET, KANSAS CITY 64110
 LAYTON, EMMET J., 1221 LOCUST STREET, ST. LOUIS 63103
 LEE, ROBERT E., 1107 GILBERT AVE., ST. LOUIS 63119
 LEE, WILLIAM E., JR., 7917 BENNETT AVE., ST. LOUIS 63117
 LEFEBVRE, GENE E., 818 GRAND, KANSAS CITY 64106
 LEHMAN, DONALD W., 7487 KINGSBURY, UNIVERSITY CITY 63130
 LEISSE, CHARLES M., 1112 FOREST AVENUE, KIRKWOOD 63122
 LEPIQUE, HARRY C., 1954 E. ADELAIDE AVE., ST. LOUIS 63107
 LESLIE, FRANK R., 2 WESTERLY LANE, LADUE 63124
 LE VEUQUE, STANLEY, 435 WARD PARKWAY, KANSAS CITY 64112
 LEVY, MORRIS L., 202 SUN-TEXACO BLDG., CORPUS CHRISTI, TEXAS 78401
 LIBRACH, SIDNEY, 35 RIO VISTA, ST. LOUIS 63124
 LICKHALTER, MERLIN E., 10425 OLD OLIVE ST. RD., ST. LOUIS 63141
 LIEBENBERG, JACOB, 5112 RIDGE ROAD, MINNEAPOLIS, MINNESOTA 55424
 LINSKOTT, M. H., 310 WARD PARKWAY, KANSAS CITY 64112
 LINSKOTT, WILLIAM M., 917 W. 43RD, KANSAS CITY 64111
 LINVILLE, WALTER N., 310 WARD PARKWAY, KANSAS CITY 64112
 LONG, HAROLD W., 2520 MARIA LOUISE LANE, CAPE GIRARDEAU 63701
 LOOMSTEIN, MEYER, 9130 LADUE RD., LADUE 63124
 LORENZ, CHARLES W., 700 NORTH BALLAS ROAD, KIRKWOOD 63122
 LUCKMAN, CHARLES, 10730 BELLEGIO RD., BEL AIR, LOS ANGELES, CALIF. 90024
 LUER, BERT, 683 TUXEDO BLVD., WEBSTER GROVES, MO. 63119
 LUETJE, GLENN R., P. O. BOX 304, JACKSON 63755
 LUNDEEN, ROBERT G., 7502 EAST 111TH TERRACE, HICKMAN MILLS 64134
 LUSK, DIETZ, JR., 121 EAST VERMILJO, COLORADO SPRINGS, COLORADO 80902

MC ARTHUR, FRANK P., 3008 WEST 71ST, PRAIRIE VILLAGE, KANSAS 66208
 MC CALL, KENNETH A., 2 EAST 43RD TERR. NO., KANSAS CITY 64111
 MC CALLUM, ANGUS, 1001 WEST 61ST ST., KANSAS CITY 64113
 MC CAMIS, EARL C., 15 WEST 10TH ST., ROOM 407, KANSAS CITY 64106
 MC CARTY, WAITMAN B., 919 BROWNELL AVE., GLENDALE 63122
 MC GLASHON, J. ROBERT, 15 WEST 10TH ST., ROOM 307, KANSAS CITY 64105
 MC KELVEY, J. G., 1461 N.E. 53 COURT, FT. LAUDERDALE, FLORIDA 33308
 MC KIBBIN, LOGAN O., 7807 GREGORY BLVD., KANSAS CITY 64133
 MC MAHON, ROBERT G., 200 S. BEMISTON, ST. LOUIS 63105
 MC MULLEN, MAURICE D., 7302 EDGEWOOD BLVD., SHAWNEE MISSION, KANSAS 66203
 MC NEILL, FRED S., NO. 12 BABLER LANE, LADUE 64758

MAACK, ALBERT C., 705 OLIVE STREET, ST. LOUIS 63101
 MACKEY, EUGENE J., JR., 6124 ENRIGHT, ST. LOUIS 63112
 MAGUOLO, GEORGE, 4908 DELMAR BLVD., ST. LOUIS 63108
 MAHN, CHARLES H., JR., 253 HORSESHOE DRIVE, KIRKWOOD 63122
 MAJERS, ALFRED, 794 ARCADE BLDG., ST. LOUIS 63101
 MAJOR, ROBERT FRANCIS, 3628 WYOMING, KANSAS CITY 64111
 MALEDON, RICHARD, 308 E. WYOMISSING AVE., PARK MANOR, READING, PA, 19607
 MALIN, LOUIS, 7857 MADISON DRIVE, ST. LOUIS 63133
 MANGER, F. H., 911 NORTH ROXBURY DRIVE, BEVERLY HILLS, CALIF. 90212
 MANSKE, W. P., 256 CHAMBERS ROAD, ST. LOUIS 63137
 MANTEL, JAMES E., 8403 CHEROKEE LANE, LEAWOOD, KANSAS 66206
 MANTEL, GLEN WALLACE, 9744 LINCOLN TRAIL, EAST ST. LOUIS, ILL. 62203
 MARCOUX, JOSEPH V., 3204 RAVENSWORTH PLACE, ALEXANDRIA, VIRGINIA 22302
 MARITZ, RAYMOND E., 4 FIELDING RD., LADUE 63124
 MARITZ, RAYMOND E., JR., 4 FIELDING ROAD, LADUE 63124
 MARKS, EDWARD, 3900 EMERSON STREET, EVANSTON, ILL. 60203
 MARRA, JAMES, 8600 SUMMIT, KANSAS CITY 64114
 MARSHALL, JAMES D., 1016 BALTIMORE AVE., KANSAS CITY 64108
 MARSHALL, ROBERT W., 1716 SAGAMONT AVENUE, SPRINGFIELD 65804
 MARTIN, ALBERT C., JR., 333 SOUTH BEAUDRY AVE., LOS ANGELES, CALIF. 90017
 MARTIN, CARL WILLIAM, 6824 ETZEL AVENUE, ST. LOUIS 63130
 MARTIN, JOHN W., 909 COUNTRY CLUB DRIVE, HANNIBAL 63401
 MASLAN, LEON, 1215 WEST 76TH STREET, KANSAS CITY 64114
 MATHEWS, ROBERT M., 4305 WEST 62ND ST., SHAWNEE MISSION, KANSAS 66205
 MATTHEWS, JAMES W., 715 SOUTH GLENSTONE, SPRINGFIELD 65804
 MATTHEWS, JAMES W., 250 SUNSET DRIVE, BALLWIN 63011
 MEALING, E. THORPE, SCHNEIDER BLDG., ST. JOSEPH 64501
 MERLOTTI, MARIO LOUIS, 3721 REGAL PLACE, ST. LOUIS 63109
 MEYN, RAYMOND EVERETT, 1401 FAIRFAX TRAFFICWAY, KANSAS CITY, KANSAS 66114
 MICHAELIDES, CONSTANTINE E., 6403 SAN BONITA AVE., CLAYTON 63105
 MINNOS, JOHN, 525 EAST 82ND ST., NEW YORK, NEW YORK 10028
 MILLER, JOHN D., 4840 W. 75TH, PRAIRIE VILLAGE, KANSAS 66208
 MILLER, LOUIS R., ARCADIA 63621
 MILLOT, THOMAS S., 9112 MAUREEN, AFFTON 63123
 MILLS, L. GEORGE, S-29 LAKE LOTAWANA, LEE S SUMMIT 64063
 MILLS, WILLIAM H., JR., 18 FLOWER HILL COURT, GLENDALE 63122
 MISCHLICH, JOHN H., 4029 N. CLEVELAND, KANSAS CITY 64117
 MITCHELL, RALPH M., BOX 173, KANSAS CITY 64141
 MITCHEM, LEROY E., 1024 COFFEY COURT, ST. LOUIS 63126
 MOFFITT, MARTIN T., 5814 WEST 70TH TERRACE, OVERLAND PARK, KANSAS 66204
 MONROE, JOHN C., JR., 818 GRAND, KANSAS CITY 64106
 MONTGOMERY, ROGER, 7120 WATERMAN, ST. LOUIS 63130
 MORESI, JOSEPH, 11844 EDDIE AND PARK, ST. LOUIS 63126
 MORGAN, DANE D., 314 N. FOURTH ST., BURLINGTON, IOWA 52601
 MORRIS, CHARLES C., 2400 VANDALIA ST., COLLINSVILLE, ILLINOIS 62234
 MORRIS, MANUEL, 231 WARD PARKWAY, KANSAS CITY 64112
 MORRIS, SIDNEY H., 173 WEST MADISON STREET, CHICAGO, ILLINOIS 60602
 MORTENSSON, N. HOLGER, 5631 VALLEY OAK DR., HOLLYWOOD, CALIF. 90028
 MUENNIG, G. K., 417 MOFFET, JOPLIN 64801
 MULLIN, CHARLES E., JR., 608 GLEN PARK LANE, KANSAS CITY, KANSAS 66215
 MURPHY, CHARLES F., 224 SOUTH MICHIGAN AVENUE, CHICAGO, ILLINOIS 60604
 MURPHY, EDWARD R., 5024A WINONA, ST. LOUIS 63109
 MURPHY, JOHN T., 968 WEST 32ND STREET, KANSAS CITY 64111
 MURPHY, JOSEPH D., 6124 ENRIGHT, ST. LOUIS 63112
 MURPHY, ROBERT L., 316 FILLMORE LANE, KIRKWOOD 63122
 MYERS, RALPH E., 1016 BALTIMORE AVENUE, KANSAS CITY 64105
 MYRES, PERSHING H., 266 GEREMMA DRIVE, BALLWIN 63011

 NAGEL, CHARLES, NATL. PORTRAIT GALLERY, SMITHSONIAN INST., WASHINGTON, D. C.
 NAGEL, FRANK W., 705 LANVALE DRIVE, WEBSTER GROVES 63119
 NELSON, DALE A., 5109 CAMBRIDGE, KANSAS CITY 64129
 NELSON, VERN A., 11309 PALMER, KANSAS CITY 64134
 NETSCH, WALTER A., JR., 30 W. MONROE STREET, CHICAGO, ILLINOIS 60603
 NEUSITZ, HAROLD W., JR., 1100 TIMBERLANE DRIVE, WARSON WOODS 63122
 NEUWIRTH, A. G., 1006 FORDER ROAD, ST. LOUIS 63129
 NEVILLE, HOMER F., 25 EAST 12TH STREET, KANSAS CITY 64106
 NEWELL, ROBERT E., 8016 BARKLEY, OVERLAND PARK, KANSAS 66204
 NICHOLS, RICHARD L., 1461 SOUTH JEFFERSON, SPRINGFIELD 65804
 NICOLOFF, KARL, 7027 STANLEY AVENUE, ST. LOUIS 63143
 NIEHAUS, WALTER L., 2039 JENNER LANE, ST. LOUIS 63138
 NINKER, HERBERT WALKER, 8469 BUCKTHORN AVE., BERKELEY 94704
 NORMILE, JOHN, 1716 LOCUST STREET, DES MOINES, IOWA 50309
 NORTON, M. GENE, 1016 BALTIMORE, KANSAS CITY 64105
 NOVAK, CHARLES, JR., 107 H8NTLEIGH DRIVE, KIRKWOOD 63122

OBATA, GYO, 1430 OLIVE ST., ST. LOUIS 63103
 OBERLECHNER, RALPH F., 6225 BROOKSIDE, KANSAS CITY 64113
 O KEEFE, CHARLES E., II WARSON TERRACE, LADUE 64758
 OLSEN, DONALD ALAN, 5 SOUTH WABASH AVENUE, CHICAGO, ILLINOIS 60603
 OLSEN, JACK E., 522 NORTH 43RD ST., BELLEVILLE, ILLINOIS 62223
 O MEARA, PATRICK M., 10425 OLD OLIVE ST. RD., ST. LOUIS 63141
 O NEIL, EUGENE CAROLL, 6510 SUNSET TERRACE, DES MOINES, IOWA 50311
 OSBORN, HARRY A., III TWINBROOK, ROCK HILL 63119
 OSHIVER, JOSEPH J., 7401 TERRACE, KANSAS CITY 64114
 OSWALD, ROBERT C., MOSLEY LANE, CREVE COEUR 63141

PALLARDY, ROY J., ROUTE 4, JEFFERSON CITY 65101
 PAOLINELLI, FERD, 6246 NORTHWOOD AVE., ST. LOUIS 63105
 PAPIN, LAWRENCE E., 11864 DOVERHILL COURT, ST. LOUIS 63128
 PARDUE, ROBERT B., JR., 1601 SINGLETON, WICHITA FALLS, TEXAS 76302
 PARHAM, R. AUSTIN, 2545 TYRELL DRIVE, ST. LOUIS 63136
 PASSONNEAU, JOSEPH, WASHINGTON UNIV., SCHOOL OF ARCHITECTURE, ST. LOUIS 63130
 PAULUS, JOHN D., JR., STATE CAPITOL BLDG., JEFFERSON CITY 65101
 PAYNE, ARTHUR F., 657 EAST ESSEX AVENUE, KIRKWOOD 63122
 PEACE, EVERETT E., JR., 7511 MOHAWK DRIVE, SHAWNEE MISSION, KANSAS 66208
 PEARCE, DAVID W., 812 OLIVE STREET, ROOM 1736, ST. LOUIS 63101
 PEARCE, ROBERT L., 812 OLIVE STREET, ROOM 1736, ST. LOUIS 63101
 PEARSON, ARTHUR E., JR., 1009 BALTIMORE, KANSAS CITY 64105
 PECKHAM, WILLIAM D., JR., 329 NORTH EUCLID, ST. LOUIS 63122
 PENHALL, THEODORE I., 942 SANDERS DRIVE, CRESTWOOD 63126
 PENN, LESTER W., 5 NORTHCOTE ROAD, BRENTWOOD 63117
 PICKER, KENNETH J., 7734 WISE AVENUE, RICHMOND HEIGHTS 63117
 PISTRUI, WILLIAM M., 7710 CARONDELET AVENUE, CLAYTON 63105
 PLATT, SIDNEY S., 630 NO, STRATFORD, WICHITA, KANSAS 67206
 POOR, ALFRED EASTON, 277 PARK AVE., NEW YORK, NEW YORK 10017
 PORTER, CHARLES C., 1418 WILSON AVENUE, COLUMBIA 65201
 PORTERFIELD, HAROLD, 733 POPLAR, POPLAR BLUFF 63901
 POTTER, M. E., ROUTE 4, CARTHAGE 64836
 PRAINITO, BERNARD, 1772 LUCILLE CT., ELMONT, NEW YORK 11003
 PRICE, SAM, 4638 J. C. NICHOLS PARKWAY, KANSAS CITY 64112
 PUTNEY, DON S., 106 ACKLEN PARK DRIVE, NASHVILLE, TENN. 37203

QUICK, GEORGE E., JR., 14 CLIF SIDE DRIVE, GLENDALE 63122

RADOTINSKY, JOSEPH W., 400 PICKWICK BLDG., KANSAS CITY 64106
 RAMOS, CHRIS P., 1627 MAIN ST., KANSAS CITY 64108
 RANDALL, J. PARKE, 5350 CHEVIOT PLACE AT CHATHAM, INDIANAPOLIS, INDIANA 46226
 RATHER, ARTHUR B., 10015 ELISE DRIVE, ST. LOUIS 63123
 RAUSCH, JACK, 739 CATALPA AVE., WEBSTER GROVES 63119
 REED, ROGER VERNON, 24 MAIN COURT, LIBERTY 64068
 REYBURN, NEAL O., 1525 WEST 7TH ST., SEDALIA 65301
 RICH, PAUL F., 2033 SOUTH KINGS, SPRINGFIELD 65804
 RICHARDS, NORBERT E., 316 NORTH SEMINOLE DRIVE, INDEPENDENCE 64050
 RIGBY, EDWARD W., 4754 BLACK SWAN DRIVE, SHAWNEE, KANSAS 66216
 RIKIMARU, YUKI, 112 SO. HANLEY RD., ST. LOUIS 63105
 RILEY, ROBERT L., 5603 W. 75 TERR., PRAIRIE VILLAGE, KANSAS 66208
 ROARK, I. L., JR., 5017 W. 66TH TERRACE, MISSION, KANSAS 66208
 ROBISON, E. M., 418 COMMERCE TRUST BLDG., KANSAS CITY 64106
 ROBSON, EDWARD J., 522 FLANDERS DRIVE, ST. LOUIS 63122
 ROEMER, CHESTER E., 244 OAKWOOD AVENUE, WEBSTER GROVES 63119
 ROSSETTI, L., 1000 MARQUETTE BLDG., DETROIT, MICHIGAN 48226
 ROTH, LESTER O., 16 PARKLAND AVENUE, ST. LOUIS 63122
 ROTT, A. J., 1933 EAST ELM STREET, TUSCON, ARIZONA 85719
 ROYAL, WILLIAM H., 7337 ST. LAWRENCE, CHICAGO, ILLINOIS 60619
 ROYER, ROBERT W., 607 WESTPORT ROAD, KANSAS CITY 64111
 RUBIN, S. L., 616 BUDER BLDG., ST. LOUIS 63117
 RUOFF, WILLIAM J., 10425 OLD OLIVE ST. RD., ST. LOUIS 63141

SALISBURY, JOHN L., 3911 HOMESTEAD DRIVE, PRAIRIE VILLAGE, KANSAS 66215
 SALKOWITZ, ABRAHAM H., 151 WESTWOOD CIRCLE, ROSLYN HEIGHTS, NEW YORK 11577
 SAMMONS, BURL R., R. F. D. 3, SEDALIA 65301
 SANDFORD, DAN R., JR., 800 WESTPORT ROAD, KANSAS CITY 64111
 SANDFORD, MAXWELL T., 800 WESTPORT ROAD, KANSAS CITY 64111
 SANNER, SAMUEL E., 1662A WASHINGTON AVENUE, ALTON, ILLINOIS 62005
 SARMIENTO, W. A., 7701 FORSYTH BLVD., ST. LOUIS 63105
 SAUNDERS, PAUL J., 3232 STATE STREET, EAST ST. LOUIS, ILLINOIS 62205
 SCHAEFER, K. M., 1775 DOUGHERTY FERRY ROAD, KIRKWOOD 63122
 SCHARHAG, HERMAN A., 2 W, ENGLEWOOD ROAD, NORTH KANSAS CITY 64118

SCHEDER, FREDERICK W., 326 WEST ADAMS ST., KIRKWOOD 63122
 SCHMIDT, KARL W., ELIJAH 65642
 SCHMIDT, SYL G., 19 FOX MEADOWS, SAPPINGTON 63127
 SCHNEIDER, RICHARD P., 1000 WAPPAPELLO, ST. LOUIS CO. 63141
 SCHUETZ, RICHARD J., 816 KANSAS AVENUE, ATCHISON, KANSAS 66002
 SCHULTE, EDWARD J., 920 EAST MC MILLAN STREET, CINCINNATI, OHIO 45206
 SCHWARZ, ARTHUR F., JR., 1620 CHEMICAL BLDG., ST. LOUIS 63101
 SEE, JOHN J., 6039 WALNUT, KANSAS CITY 64113
 SELDERS, ALLAN H., 7756 BRIAR DRIVE, PRAIRIE VILLAGE, KANSAS 66208
 SELIGSON, THEODORE, 209 E. 36TH, KANSAS CITY 64111
 SERON, LEVON, 510 JERSEY AVE., JOLIET, ILLINOIS 60435
 SHAKOFSKY, SOL PHILIP, 10 WARSONHILLS, ST. LOUIS 63124
 SHAPIRO, BENJAMIN, 550 S. BRENTWOOD BLVD., ST. LOUIS 63105
 SHARP, MARK S., 25 EAST 12TH STREET, KANSAS CITY 64106
 SHAUGHNESSY, JOSEPH B., 3543 BROADWAY, KANSAS CITY 64111
 SHAUGHNESSY, JOSEPH B., JR., 5746 HARRISON, KANSAS CITY 64110
 SHAVER, JOHN ADEN, 205 SOUTH SANTA FE, SALINA, KANSAS 67401
 SHAWCROSS, J. H., 6200 A S. KINGSHIGHWAY BLVD., ST. LOUIS 63109
 SHELLEY, J. RICHARD, 4311 E. SEVENTH ST., LONG BEACH, CALIF. 90804
 SHELTON, J. M., 96 POPLAR ST., N.W., ATLANTA, GEORGIA 30303
 SHULER, F. WILLIAM 3707 EAST 49TH STREET NORTH, KANSAS CITY NORTH 64119
 SIBERZ, LEWIS, RT. 1, WAUNAKEE, WISC. 53597
 SIMON, W. H., 25 EAST 12TH STREET, KANSAS CITY 64106
 SINGER, C. C., 323 CAMELIA DRIVE, WEBSTER GROVES 63119
 SKLAR, ETHEL, P. O. BOX 173, KANSAS CITY 64141
 SKOGLUND, A. FREDRIK, 1700 SOUTH SECOND, ST. LOUIS 63177
 SKUBIC, LEROY F., 53 WEST JACKSON BLVD., CHICAGO, ILLINOIS 60604
 SKUBIZ, RAYMOND E., 5436 LINDENWOOD AVE., ST. LOUIS 63109
 SLABY, HENRY R., 2750 NORTH TEUTONIA AVE., MILWAUKEE, WISC. 53206
 SLEZAK, FRANK R., 827 VALENTINE RD., KANSAS CITY 64111
 SMITH, DOUGLAS CLARK, 1211 W. 25TH TERR., INDEPENDENCE 64052
 SMITH, ERIC W., JR., 7701 FORSYTH, ST. LOUIS 63105
 SMITH, JAMES R., 310 WARD PARKWAY, KANSAS CITY 64112
 SMITH, LAWRENCE F., 3900 SOUTH CRYSLER, INDEPENDENCE 64050
 SMITH, LAWRENCE H., 6432 COLVER AVENUE, AFFTON 63123
 SMITH, LEE POTTER, P. O. BOX 850, PADUCAH, KENTUCKY 42001
 SMITH, PORTER JACKSON, 516 NO. SHORE DR., KANSAS CITY 64152
 SMITH, WILLARD GREGG, 3005 WEST 90TH STREET, LEAWOOD, KANSAS 66206
 SNIPES, ALFRED H., 840 VINE ST., POPLAR BLUFF 63901
 SOMMERICH, CHESTER D., 8135 FORSYTH, CLAYTON 63105
 SOUTHLAND, BEN H., 6330 SAN VICENTE BLVD., LOS ANGELES, CALIF. 90048
 SPELLMAN, LAWRENCE E., 10850 HALLSTEAD DRIVE, ST. LOUIS 63121
 SPOTSWOOD, LELAND E., 147 POWELL AVENUE, FERGUSON 63135
 STAATS, PAUL STANLEY, 10215 DEARBORN DRIVE, OVERLAND PARK, KANSAS 66207
 STAGMAN, NATHAN, 53 WEST JACKSON BLVD., CHICAGO, ILLINOIS 60604
 STAHL, RICHARD P., 1465 SOUTH GLENSTONE, SPRINGFIELD 65804
 STANDISH, JOSEPH D., R. R. 1, BOX 284, ST. LOUIS 63141
 STANLEY, THOMAS E., II, P. O. BOX 1554, 3505 TURTLE CREEK BLVD., DALLAS, TEXAS 75221
 STAUDER, ARTHUR E., 3608 SOUTH GRAND BLVD., ST. LOUIS 63118
 STEELE, CHARLES E., JR., 5710 VALLEY RD., KANSAS CITY 64151
 STEFFENS, LAWRENCE J., 135 HEATHERWOOD DRIVE, ST. LOUIS 63132
 STERNBERG, FREDERICK C., 25 NARRAGANSETT DRIVE, ST. LOUIS 63105
 STIEGEMEYER, O. W., 3 SHERATON DRIVE, ST. LOUIS 63124
 STIFF, ROY L., 2130 OAK DRIVE, ST. LOUIS 63131
 STINSON, NOLAN L., JR., 8 THE KNOLLS, CREVE COEUR 63141
 STOKES, RUSSELL T., JR., 733 JEWEL AVENUE, KIRKWOOD 63122
 STOYANOFF, DIMITER, 7029 KINGSBURY, ST. LOUIS 63130
 STRINGER, KIRBY, 1833 PRIMROSE AVENUE, NASHVILLE, TENNESSEE 37212
 STUCK, ELMER A., 215 WILKINS, JONESBORO, ARKANSAS 72401
 SUCHE, WARREN V., 9228 LAVENT DR., CRESTWOOD 63126
 SUMNER, GUY L., 310 WARD PARKWAY, KANSAS CITY 64112
 SWEENEY, 2102 SO. GRAND BLVD., ST. LOUIS 63126

 TARLING, JULIUS E., 8230 FORSYTH BLVD., ST. LOUIS 63105
 TAYLOR, JAMES E., 1417 EAST 108TH TERRACE, KANSAS CITY 64131
 TAYLOR, JOHN M., 744 CHERRY ST., SPRINGFIELD 65806
 TEBBETTS, THOMAS, 911 LOCUST STREET, ST. LOUIS 63101
 TERNEY, JAMES F., JOHN HANCOCK BLDG., KANSAS CITY 64112
 THEBY, JAMES ROBERT, 4912 BROCKWOOD DRIVE, ST. LOUIS 63128
 THIAS, EDWARD J., 300 DAILY RECORD BLDG., ST. LOUIS 63101
 THOMPSON, JOHN A., 14 LOMOND COURT, FERGUSON 63135
 THYE, CARL J., PORT REPUBLIC, MARYLAND 20676
 TISDALE, ROBERT E., 705 CHESTNUT STREET, ST. LOUIS 63101

TOGNASCIOLI, HERSCHEL JOHN, 2008 SHADY LANE DRIVE, KANSAS CITY 64118
 TOOLE, HOWARD WILSON, 9 SPRINGBROOK PLACE, WEBSTER GROVES 63119
 TUCKER, O. HORACE, 1780 SO. NATIONAL, SPRINGFIELD 65804
 TUCKER, TAD M., 1013 COFFEY COURT, ST. LOUIS 63126
 TURK, LEO HENRY, 2507 SANFORD AVENUE, ALTON, ILLINOIS 62005

VALK, DONALD N., 325 GRAND AVENUE, MARYVILLE 64468
 VAN HOEFEN, HARI, 1620 CHEMICAL BLDG., ST. LOUIS 63101
 VAN PRAAG, JAMES N., 9820 CLAYTON ROAD, ST. LOUIS 63124
 VARWIG, HARRY J., 3634 VARWIG LANE, BRIDGETON 63044
 VERNON, ITAL R., 1115 SANFORD AVE., ST. LOUIS 63110
 VOGT, ALVIN A., 1411 AMBASSADOR BLDG., ST. LOUIS 63101
 VON ACHEN, KENNETH O., EUFORA, KANSAS 66025
 VOSKAMP, RAYMOND L., 8311 MEADOW LANE, LEAWOOD, KAN SAS 62206
 VREDENBURGH, WALTER J., 4119 DRESSSELL AVENUE, ST. LOUIS 63120

WAGNER, HARRY L., 15 WEST 10TH STREET, KANSAS CITY 64106
 WAHLMANN, H. R., 1002 W. ADAMS, KIRKWOOD 63122
 WAKEFIELD, RICHARD N., 8127 WORNALL ROAD, KANSAS CITY 64114
 WALL, W. A., 6810 CHESTNUT, KANSAS CITY 64132
 WALTERS, WILLARD J., BOX 533, PACIFIC PALISADES, CALIF. 90272
 WARD, R. E., 203 GREGORY, NORMAL, ILLINOIS 61761
 WATERS, EDWIN CAREY, 322-28 EAST WALNUT, SPRINGFIELD 65806
 WATKINS, W. B. K., 1021 OAKLAND AVE., MT. VERNON, ILLINOIS 62864
 WATSON, CLARENCE F., 9028 MELROSE, OVERLAND PARK, KANSAS 66203
 WATSON, DALE R., 13201 EAST 40TH TERRACE, INDEPENDENCE 64050
 WAXELMAN, HERBERT J., 6432 MORNINGSIDE DRIVE, KANSAS CITY 64131
 WEDEMEYER, WESLEY W., 111 NORTH 4TH ST., ST. LOUIS 63102
 WEINEL, CAY G., 8230 FORSYTHE BLVD., CLAYTON 63105
 WEISENSTEIN, LYMAN, 3201 WEST MAIN ST., BELLEVILLE, ILLINOIS 62220
 WEISERT, WILSON G., 374 HALCYON DRIVE, GLENDALE 63122
 WEITER, HERMAN A., 4815 HANOVER AVENUE, ST. LOUIS 63123
 WELCH, JOHN AUSTIN, P. O. BOX 846, TUSKEGEE INSTITUTE, ALABAMA 36088
 WELLS, WILLIS L., 433 EDGEWOOD DRIVE, CLAYTON 63105
 WERNER, GEORGE W., 5236 MC CAUSLAND AVENUE, ST. LOUIS 63109
 WESTVOLD, ROBERT G., 4406 WEST 77 PLACE, SHAWNEE MISSION, KANSAS 66208
 WILLINGHAM, JAS. L., 2809 BREMERTON, BRENTWOOD 63144
 WILSON, DAVID CLARENCE, 1115 HARRISON ST., MT. VERNON, ILLINOIS 62864
 WILSON, DONALD FRANCIS, JR., 7755 CARONDELET, ST. LOUIS 63105
 WILSON, DONALD G., 12501 E. 49TH ST., INDEPENDENCE 64050
 WILSON, EARL R., 2500 FREEMAN AVE., KANSAS CITY, KANSAS 66120
 WILSON, WILLIAM HAROLD, 8017 FLOYD STREET, OVERLAND PARK, KANSAS 66204
 WINKLER, GEORGE A., 7 NO. BRENTWOOD, CLAYTON 63105
 WISCHMEYER, KENNETH E., 317 N. 11TH ST., ST. LOUIS 63101
 WISNER, WILLIAM A., 3232 LETTIE, AMES, IOWA 50010
 WISNEWSKI, JAMES T., SUITE 104, 34 NO. GORE ST., WEBSTER GROVES 63119
 WOOD, EDWIN F., 8135 FORSYTH BLVD., CLAYTON 63105
 WOOD, JAMES H., 8 CLERMONT LANE, ST. LOUIS 63124
 WOODHOUSE, URBAN U., 14430 MICHIGAN AVE., DEARBORN, MICHIGAN 48126
 WOOLLEY, HERBERT M., 7540 WALNUT ST., KANSAS CITY 64114
 WURST, WILBUR W., 4699 SALEM AVENUE, DAYTON, OHIO 45416

YAMASAKI, MINORU, 1025 EAST MAPLE, BIRMINGHAM, MICHIGAN 48011
 YANDA, ALBERT J., 1009 BALTIMORE, KANSAS CITY 64105
 YOUNG, ROXEY C., 1970 SOUTH KINGS AVENUE, SPRINGFIELD 65804

ZACHRY, JAMES R., 607 WESTPORT ROAD, KANSAS CITY 64111
 ZAY, JOSEPH, 3 ACORDI DRIVE, CASEYVILLE, ILLINOIS 62232
 ZEITER, EDWARD J., 2907 PORTUGAL DRIVE, ST. LOUIS 63125
 ZELSMAN, EARLE PHILLIP, 5106 WESTMINSTER PLACE, ST. LOUIS 63108

LIFE MEMBERS

ABRAHAMS, NAT, 8030 DELMAR, ST. LOUIS 63130
 ABT, LUDWIG, 1 HOLMAN ROAD, MOBERLY 65270
 BOHLEN, AUGUST C., 1 308 NORTH MERIDIAN, INDIANAPOLIS, INDIANA 46202
 BOVARD, WILLIAM R., 3614 WYOMING, KANSAS CITY 64111
 BRANSON, UZZELL S., FIRST NATIONAL BANK BLDG, BLYTHEVILLE, ARKANSAS 72315
 BRINKMAN, THEO. C., 7701 KENRIDGE LANE, SHREWSBURY 63119
 BROSTROM, ERNEST O., 1604 TERRY DR., BRIDGEVILLE, PA. 15017
 CAMPEN, CARL, 7399 BEDFORD AVENUE, UNIVERSITY CITY 63130
 CHAFFEE, ROY O., 6107 WESTMINSTER PLACE, ST. LOUIS 63112
 CROWELL, WILLIAM D., 12 PORTLAND PLACE, ST. LOUIS 63108
 DUNBAR, IRWIN, 815 EAST ILLINOIS STREET, KIRKSVILLE 63501
 ELLIOTT, B. C., 100A SO. JEFFERSON ST., MEXICO 65265
 FAIRBROTHER, FREDERIC A., NEW CENTER BLDG., DETROIT, MICHIGAN 48202
 FARRAR, BENEDICT, 794 ARCADE BLDG., ST. LOUIS 63101
 FITCH, AUSTIN E., 4943 REBER PL., ST. LOUIS 63139
 FRANK, C. MELVIN, 1650 WEST FIFTH AVENUE, COLUMBUS, OHIO 43212
 FRITON, ERNEST T., 410 SECURITY BLDG., ST. LOUIS 63102
 GENTRY, ALONZO H., 750 WEST 47TH STREET, KANSAS CITY 64112
 GILBERT, HARRY R., 1821 DOUGHERTY FERRY RD., KIRKWOOD 63122
 GOEDDE, ALBERT M., 100 SIGNAL HILL BLVD., EAST ST. LOUIS, ILLINOIS 62203
 GRANGER, B., 2028 MISSISSIPPI, JOPLIN 64803
 GRIMM, HENRY C., 501 SETTLE AVE., FERGUSON 63121
 HAEGER, LEONHARD, 6897 TELEGRAPH RD., ST. LOUIS 63129
 HARLEY, ALVIN E., 153 EAST ELIZABETH ST., DETROIT, MICHIGAN 48201
 HENDERSON, GALE E., 2202 SO. HANLEY RD., ST. LOUIS 63144
 HILL, LAWRENCE, 5503 HOWE ST., PITTSBURGH, PA. 15232
 HOENER, P. JOHN, 4227 WATSON ROAD, ST. LOUIS 63109
 JOHNSON, WILL W., 1329 SO. CLAY AVE., SPRINGFIELD 65804
 KEENE, ARTHUR S., 911 MAIN ST., KANSAS CITY 64105
 KENNEY, STEPHEN C., 7119 LYDIA AVENUE, KANSAS CITY 64131
 KERBER, EUGENE V., 2842 HAMPTON AVE., ST. LOUIS 63139
 KRIEHN, ARTHUR, 5435 PAWNEE, SHAWNEE MISSION, KANSAS 66208
 KUBATZKY, O., 1508 ORCHARD AVENUE, ST. LOUIS 63115
 LANTZ, EDWARD, 115 NORTH PRICE ROAD, CLAYTON 63105
 LAUCK, J. F., 6225 BROOKSIDE BLVD., KANSAS CITY 64113
 LYNCH, HAL, 304 NORTH CENTRAL, CLAYTON 63105
 MC INTYRE, GEORGE E., 1550 LEXINGTON COURT, KANSAS CITY 64124
 MACK, CLYDE F., 2959 NURICK DRIVE, CHATTANOOGA, TENNESSEE 37415
 MACKIE, DAVID, LODGE ON THE DESERT, 306 NO. ALVERON WAY, TUCSON, ARIZONA 85711
 MARTINIE, TRUEMAN E., 323 MINERS BANK BLDG., JOPLIN 64801
 MEIER, EUGENE R., 816 NORTH 11TH ST., ST. JOSEPH 64501
 MILLER, WARREN D., 604 TRIBUNE BLDG., TERRE HAUTE, INDIANA 47802
 MUELLER, VINCENT G., 915 NEWPORT, WEBSTER GROVES 63119
 NAESS, S. E., 1033 BONNIE BRAE, RIVER FOREST, ILLINOIS 60305
 NIEMANN, EMIL H., 3816 SHAW BLVD., ST. LOUIS 63110
 OSBURG, ALBERT, 5938 KEITH PLACE, ST. LOUIS 63109
 PAULUS, EUGNE H., 1717 VERONICA AVENUE, ST. LOUIS 63115
 PETERS, NELLE E., 3935 CLARK ST., KANSAS CITY 64111
 PIACENTINI, V., 9005 SHERLAND, OVERLAND 63114
 SANDFORD, DAN R., 800 WESTPORT, KANSAS CITY 64111
 SAUM, FRANK J., 2121 SOUTH GRAND BLVD., ST. LOUIS 63114
 SCAMELL, RALPH E., 6812 FLOYD AVE., OVERLAND PARK, KANSAS 66204
 SCHUMACHER, RAMON, 424 SCARRITT BLDG., KANSAS CITY 64106
 SCHWARZ, ARTHUR J. P., 1609 SOUTH MONTGOMERY, SEDALIA 65301
 SHAW, ALFRED, 910 LAKE SHORE DR., CHICAGO, ILLINOIS 60611
 SIEBEN, S. H., 6436 MORNINGSIDE DRIVE, KANSAS CITY 64113
 STAUDER, ADOLPH F., 3608 SOUTH GRAND BLVD., ST. LOUIS 63118
 STEPHEN, DAVID, 911 LOCUST ST., ST. LOUIS 63111
 STERN, EUGENE J., DOLORES 3-302, MEXICO CITY, D.F.
 SUTTERFIELD, JOHN A., 12 HICKORY HILLS DRIVE, DEXTER 63841
 SUTTERFIELD, J. L., GRUBVILLE 63041
 TRASK, FRANK E., 305 BOARD OF TRADE BLDG., KANSAS CITY 64106
 UNDERHILL, LYLE W., 6172 SNI-A-BAR ROAD, KANSAS CITY 64129
 VALENTI, PAUL, 7837 UTICA DRIVE, ST. LOUIS 63133
 WELCH, AUSTIN, 1507 BASS AVE., COLUMBIA 65201
 WETZEL, JOHN, 2710 KEOKUK ST., ST. LOUIS 63118
 WILLIAMSON, THOMAS W., 1935 COLLINS AVE., TOPEKA, KANSAS 66604

PAST PRESIDENTS OF M.A.R.A.

(Year shown is year of presidential installation)

- | | |
|------|---|
| 1951 | A. W. Archer, Kansas City (Deceased) |
| 1952 | E. R. Froese, St. Louis (Deceased) |
| 1953 | Harold A. Casey
759 South Glenstone, Springfield 65802 |
| 1954 | Rex L. Becker
705 Olive Street, St. Louis 63101 |
| 1955 | Luther O. Willis
Kansas City |
| 1956 | Robert Elkington
7916 Kingsbury Avenue, St. Louis 63105 |
| 1957 | David P. Clark
302 Miller Building, Columbia 65201 |
| 1958 | John C. Monroe, Jr.
818 Grand Avenue, Kansas City 64106 |
| 1959 | John D. Sweeney
2102 South Grand Blvd., St. Louis 63104 |
| 1960 | John M. Hewitt
607 Westport Road, Kansas City 64111 |
| 1961 | David W. Pearce
721 Olive Street, St. Louis 63101 |
| 1962 | David M. Brey
306 East 12th Street, Kansas City 64106 |
| 1963 | Richard P. Stahl
1465 South Glenstone, Springfield 65804 |
| 1964 | Edward J. Thias
1004 Market Street, St. Louis 63101 |
| 1965 | Maxwell T. Sandford
800 Westport Road, Kansas City 64111 |

SPECIAL AWARDS AT AIA CONVENTION INCLUDE SAARINEN ARCH

Angelo G. Corrubia, president, St. Louis Section of the American Institute of Architects recently announced the selection by A.I.A. of an architectural project and an organization to receive special honors at the annual convention of the professional organization.

The Gateway Arch at St. Louis was awarded the Henry Bacon Medal for Memorial Architecture, which was presented for the first time. The institute's citation of an organization honored the Museum of Modern Art, New York City, with special commendation for its new Philip L. Goodwin Galleries of Architecture and Design.

Both awards were presented at the AIA convention in Denver the week of June 26-July 1. The winners were selected by the national board of directors of the 18,000-member professional organization.

Symbolizing St. Louis as the historic gateway to the American West, the soaring stainless steel arch promises to be a distinctive landmark. It was designed by the late Eero Saarinen, A Gold Medalist of the AIA. The Bacon Medal was accepted by the firm of Eero Saarinen and Associates of Hamden, Conn.

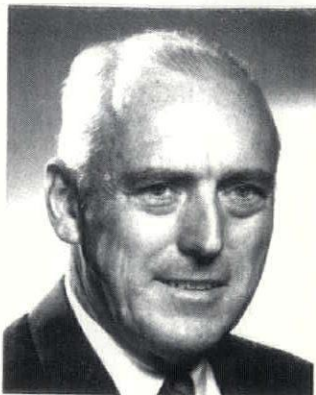
Soaring 630 feet, the arch is the country's tallest national monument, surpassing the 555-foot Washington Monument in the nation's capital. It is the dominant feature of the \$30,000,000 Jefferson National Expansion Memorial, which commemorates the westward expansion of this country's pioneers. The 80-acre wooded park borders the Mississippi River on the original townsite of St. Louis.

Structural engineering was done for the Saarinen organization by Severud Associates of New York City. The memorial project was undertaken

by the City of St. Louis and the National Park Service of the U.S. Department of the Interior.

The Henry Bacon Medal for Memorial Architecture honors the memory of the Institute's 1923 Gold Medalist. He was the designer of many monuments and memorials, best known of which is the Lincoln Memorial in Washington, D.C.

—St. Louis Construction Record



John D. Sweeney, St. Louis architect has been elected to the college of Fellows of the American Institute of Architects.

Election to the honor society is on the basis of exceptional service to the architectural profession.

Mr. Sweeney, a graduate of M.I.T., and past president of St. Louis Chapter, AIA, and the Missouri Association of Registered Architects, chairman of the Board of Registration for Architects and Professional Engineers, was elevated to Fellowship in the Institute July 1 at ceremonies held in conjunction with the 1966 AIA convention in Denver.

Mr. Sweeney was the architect for St. Mary Margaret Alocque School, Mehlville; Crestwood Chapel; Pipefitters Educational Building; and numerous remodeling jobs for the City of St. Louis.

—St. Louis Construction Record

M.A.R.A. LETTERS

Sirs:

My wife and I want to tell you that your organization really gave us a rare treat during your fine annual meeting weekend. You were perfect hosts in that you made us feel welcome in the midst of a very active professional group.

We did manage to skip out of most of the sessions in order to see a couple of restorations in the area, including the work that Ken Coombs has done on Watkins Mill in Lawson. Frankly, I find it very helpful to prepare for these talks by looking over the area that we are visiting. We both thought that enough controversy had been stirred up by the talk to convince us that at the very least — no one had missed the message.

Above all, MARA was most kind to take such good care of both of us. We really appreciate the opportunity you gave us.

Sincerely,
Charles B. Hosmer, Jr.
Principia College
Elsah, Illinois

Sirs:

I hardly know how to put in writing my deep appreciation for Viola and myself being invited to attend the annual M.A.R.A. meeting in Kansas City.

The meeting in Kansas City was outstanding from the standpoint of information I received regarding the Missouri Association of Registered Architects as well as renewing my many friends and making new friends.

But standing above all of this and my many years of association with the Registered Architects in Missouri, as a former Chairman of the Missouri State Board of Registration for Architects and Professional Engineers, were the words of the President in introducing me when I was called forward to receive the award. I was further honored by a standing ovation of the architects present.

This award will be displayed proudly in my office and I do know that my interest in the architects and engineers in Missouri and elsewhere will continue as long as I live.

Please extend my very sincere thanks to all registered architects in Missouri.

Very truly yours,
Bruce Williams
Joplin, Mo.

Dear Mr. Mayes,

This is to express to you and all of the good folks of the Carthage Marble Corporation family, a great big THANKS for an extremely delightful

Cocktail Hour prior to our Annual Banquet at the Prom Motel, a week ago Saturday, April the 30th.

Our Annual Meeting was the biggest success we have ever had in the history of MARA and, of course, this could only have been accomplished through your participation and the wonderful manner in which you entertained our guests and members prior to the Banquet.

Please pass this message of thanks on to Mr. Taylor, your father, and all these who have so graciously helped us in the past to make this meeting of ours a success like it was this time.

Sincerely,
Maxwell T. Sandford
Immediate Past-President MARA

Dear Ethel:

Just a note to express to you my personal thanks for the excellent manner in which you handled the ladies' events at the Annual Meeting of MARA last April 29th and 30th.

Ethel, most of our people said this was the finest Annual Meeting that we have had in the history of MARA. It was better attended, it was more interesting to the members and definitely a success with the ladies, from the information gleaned by listening to reports on the trip to the Plaza III, etc.

Thank you, Ethel, on behalf of MARA for a most excellent job well done.

Sincerely,
Maxwell T. Sandford
Immediate Past-President MARA

Dear Frank:

We have had so many flowery letters written to me giving me credit for things I did not do and I know I have expressed to you over the phone my appreciation of your most capable management, arrangement, promotion and organizing of the Annual Meeting as Chairman of the Annual Meeting Committee. I, also, thought I could not write the several thank you letters that I am writing to such people as Carthage Marble Corporation, Producers Council, Ethel Sklar, etc. and express to them my appreciation of the contribution that they made to MARA's successful Annual Meeting without also writing you a letter and again expressing my thanks.

MARA only has one meeting a year where all of the members have an opportunity to come and see what is being done, get up and speak their piece at a business meeting, etc. therefore, it is really important that this meeting be done up in the best package available and, Frank, you certainly did it up with a big red ribbon around it and, on behalf of all members of MARA, thanks for a job well done.

Sincerely,
Maxwell T. Sandford
Immediate Past-President MARA

MY WAY OF LIFE

I have dreamed many a dream that never came true; but I have had enough dreams come true to make me believe in dreams and keep on dreaming.

I have prayed many a prayer that seemed unanswered; but I have seen enough of my prayers answered to make me forever believe in prayer, and keep on praying.

I have trusted many a man who failed me; but I have found enough true friends to make me forever believe in humanity, and to keep on trusting.

I have fought many a battle and lost it; but I have won enough battles to make me forever believe in the struggle, and to make me keep on fighting.

I have spoken many a word that should never have been spoken; but enough of my words have touched human hearts to make me forever believe in witnessing and to keep on at it.

I have preached many a poor sermon that shamed me; but I have seen enough hearts warmed under the gospel to make me forever believe in preaching and to keep on at it.

I have seen Jesus, my Lord, seem to lose many a battle; But I have seen enough of His triumph to make me forever believe in His Divine Sovereignty, and follow Him forever and forever.

A. L. McCawley
(Deceased)
Jefferson City, Mo.



Winco Ventilator Co.
INCORPORATED
Manufacturers of Aluminum Windows
NOT JUST A WINDOW... A WINCO

C. E. GARRISON
ENGINEERED SALES REPRESENTATIVE

EVERGREEN 1-8033
533 BITTNER ST.
ST. LOUIS 15, MO.

INSULATION FOR THE TIGHTWAD

For as little as 10¢ per sq. ft. you can insulate brick and block, brick cavity and block wall systems, depending on block or cavity size.

Zonolite® Masonry Fill Insulation cuts heat transmission through the walls up to 50% or more . . . reduces cost of heating or cooling equipment needed . . . offers clients more comfort, a more efficient structure for their money. Your Zonolite representative has details.

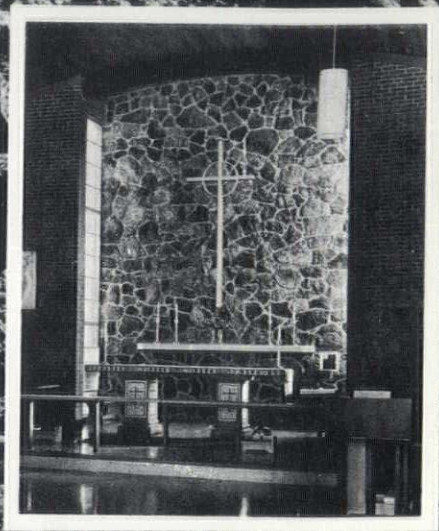
ZONOLITE



**ZONOLITE DIVISION
W. R. GRACE & CO.**

135 SO. LA SALLE ST., CHICAGO, ILL.

For
Natural
Beauty...
**NATURAL
STONE**



*St. Stephens Episcopal Church — St. Louis
Charles Norak Jr., Architect*

LAVA

**SANTA FE PATTERN
SOCORRO PATTERN**

Quarried in New Mexico from recently discovered deposits LAVA is estimated to be thousands of years newer than other deposits and therefore much cleaner and burdened with far less impurities.

Santa Fe pattern, portrayed strikingly above, is richly textured material selected to a generally flat plane moderately convex or concave. This texture came about as each molten layer slid forward over another already cooled. Color is a dark brown ranging to brown to black, thus

giving an assortment of pleasant brownish blacks.

Santa Fe Pattern averages 2½" to 4" in wall thicknesses. Also available in the Socorro Pattern, the "chunky" or "lumpy" version which also features the rich brownish blacks.

As seen in the church chancel pictured above, Lava emulates a strong hand-carved effect, still maintaining nature's rugged simplicity. More information on Lava is available from:



THE STONE CENTER

3200 BRANNON AVE. ST. LOUIS 39, MO. PR. 1-1000

**NOW
POWERIZED
FOR ADDED
DRAFTING
ROOM
EFFICIENCY!**



THE NEW

Hamilton
POWER SHIFT

- Powershift – a touch of the foot pedal silently raises and lowers board to any desired drafting position.
- Powershift travels the board through a full 14" vertical range.
- Plus Hamilton's exclusive DIAL-A-TORQUE* that gives positive counterbalanced board tilt with fingertip control.

*Patent applied for

Distributors of



drafting materials

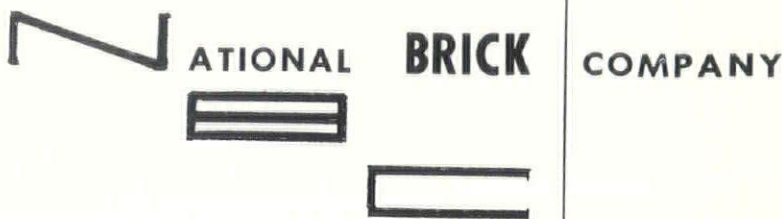
SERVICE

BLUE PRINT & PHOTO COPY CO.

710 PINE STREET • SAINT LOUIS 1, MO. • CHestnut 1-0688

8865 LADUE RD.
ST. LOUIS 24, MO.

PA 6-6464

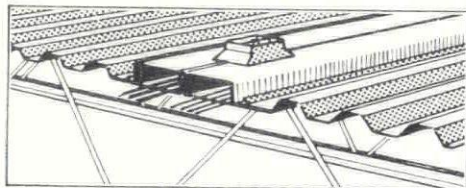


"When you care enough to use the best"

Q. WHO HAS REAL NEWS IN STEEL BUILDING PRODUCTS THIS YEAR?

A. GRANCO

FOR FLOORS AND ROOFS...



NEW CEL-WAY—The first in-floor electrification system with cellular-floor capacity for use in thin slabs over steel joists.

NEW A-E (Air-Electric) FLOOR—A compact floor system providing horizontal under-floor distribution of conditioned air and electrical services.

NEW COFAR® COMPOSITE—Combined form and reinforcement for concrete slabs available with shear connectors for composite design.

CORRUFORM®—The original permanent steel

base for concrete floor and roof slabs.

TUFCOR®—Galvanized tough-temper steel roof deck for lightweight, insulating concrete and built-up roof construction.

ROOF DECK—Steel deck for rigid insulation and built-up roof construction. Available painted or galvanized.

G-DECK—A deep-ribbed steel deck for roof construction and cantilever conditions.

U-DECK—A light-gage, multi-purpose galvanized steel deck for short spans.

FOR HIGHWAYS...

FUL-FLO® SUBDRAINS • GUARD RAIL • S-I-P® (Stay-In-Place) BRIDGE FORMS

FOR INDUSTRIAL BUILDINGS...

VIN-COR®—Granco's galvanized and vinyl-coated steel siding. An outstanding building product that offers two-way protection against corrosive atmospheres. Variety of colors and patterns.

Our catalogs are filed in Sweet's, Distributors in more than 100 principal cities.

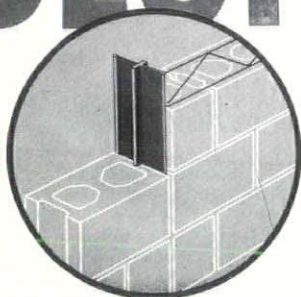


GRANCO / IMAGINATION IN STEEL

GRANCO STEEL PRODUCTS COMPANY, 6506 N. BROADWAY
ST. LOUIS, MISSOURI 63147. SUBSIDIARY OF GRANITE CITY STEEL COMPANY



BLOK-MESH BLOK-JOINT



Quality masonry work calls for both joint reinforcement and control joints. Blok-Mesh reinforcement and Blok-Joint control joint meet the most exacting specifications.

Blok-Mesh is available in either a truss type, for maximum strength, or a ladder type for greater economy on lighter requirements. Both come in choice of wire sizes, widths and plain or galvanized.

Blok-Joint is the original cross shaped rubber extrusion for forming control joints. It is available in the standard size for use in any wall thickness or with a wide flange for speed and economy in 8" walls. Both types are used with standard metal sash blocks and conventional caulking for complete weatherproofing of the joint.

Call or write for complete information.

diversified materials service



M.A.R.A. WORKSHOP

For all officers, directors, committee chairmen and committee members.

Friday, October 7, 1966

Ramada Inn

Jefferson City, Mo.

11 a.m. to 4 p.m.

Interested members are welcome. Committee programs will be developed and approved. M.A.R.A. matters will be discussed.

Mark the date and hold it.

Edwin C. Waters

President

MISSOURI
ASSOCIATION
OF REGISTERED
ARCHITECTS

MISSOURI
ASSOCIATION
OF REGISTERED
ARCHITECTS

MISSOURI
ASSOCIATION
OF REGISTERED
ARCHITECTS

MISSOURI
ASSOCIATION
OF REGISTERED
ARCHITECTS

MISSOURI
ASSOCIATION
OF REGISTERED
ARCHITECTS

MISSOURI
ASSOCIATION
OF REGISTERED
ARCHITECTS

MISSOURI
ASSOCIATION
OF REGISTERED
ARCHITECTS

MISSOURI
ASSOCIATION
OF REGISTERED
ARCHITECTS

MISSOURI
ASSOCIATION
OF REGISTERED
ARCHITECTS

MISS
ASSOCI
OF REGI
ARCHI

MISS
ASSOCI
OF REGI
ARCHI

MISSOURI
ASSOCIATION
OF REGISTERED
ARCHITECTS

AIA Journal
1735 New York Avenue, N.W.
Washington, D.C. 20006