

MADA

MADA

MADA

ARCHITECTS DAY

MAY 2, 1964

MADA

MADA

SPRINGFIELD

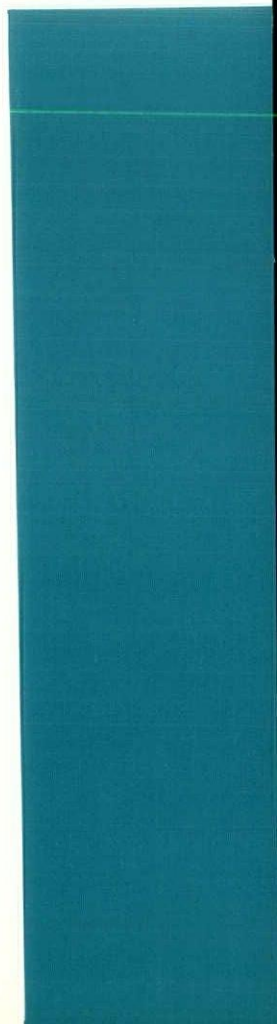
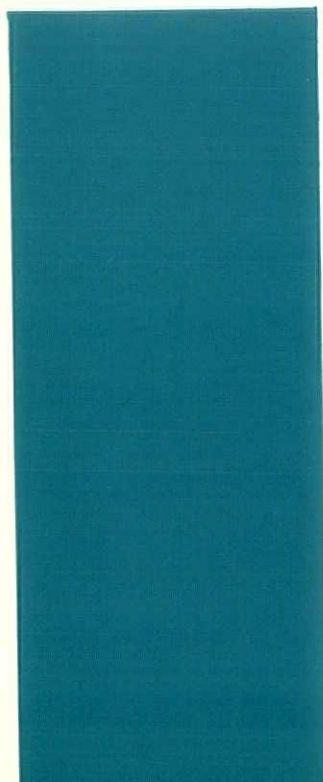
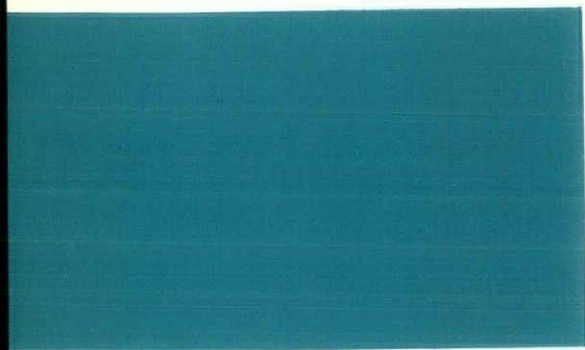
SPRINGFIELD

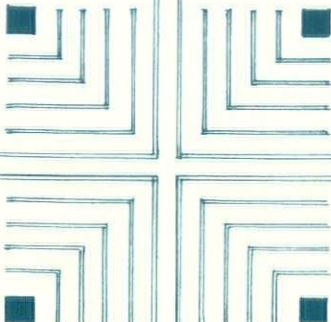
ARCHITECTS DAY

MAY 2, 1964

4-1964

MA
ARA





If land is debauched,
or streams polluted, our
air a nauseous mix of
soot, fumes, and the leth-
al gas of industry; if our
cities are exploited jung-
les of disorder and corrupt-
ing ugliness; and, if
there is little safety and
no amenity, to whom can
the public look for help
for guidance, for vision?
To the Realtor? The De-
veloper? The Politician?
The answer must be: The
Architect. In one form or
another, the solutions to
all of these problems lie
in the province of design,
which is the special prov-
ince of the Architect.

From

"The Mission of the Prof-
ession of Architecture"
by Phillip Will, Jr., FAIA



ARCHITECTS DAY COMMITTEE

Chairman:

John M. Taylor

Edgar A. Albin

Gary G. Bourgeois

Richard L. Nichols

Paul Rich

Edwin C. Waters

MISSOURI ASSOCIATION OF REGISTERED ARCHITECTS ARCHITECTS' DAY, 1964 SPRINGFIELD, MISSOURI P R O G R A M

FRIDAY - MAY 1ST, 1964

11:00 A.M.	Board Meeting	Kentwood Arms Hotel
1:00-4:30 P.M.	Registration	Kentwood Arms Hotel Lobby
1:00-4:00 P.M.	Special Preview Showing of "Watercolor U.S.A." Transportation Provided	Springfield Art Museum
1:00 P.M.	Past President's Meeting David Pearce, Chairman	Kentwood Arms Hotel
5:30 P.M.	Leave for Riverside Inn Ozark, Missouri	
6:00 P.M.	President's Reception Cocktails, courtesy of Carthage Marble Corp.	Riverside Inn
7:00-8:00 P.M.	Buffet Dinner Recognition and honoring of Past Presidents	Riverside Inn
8:00-12:00 P.M.	Entertainment and Dancing	Riverside Inn

SATURDAY - MAY 2ND, 1964

- | | | |
|-----------------|---|------------------------|
| 8:00-11:30 A.M. | Registration | Kentwood Arms Hotel |
| 8:00 A.M. | Producers Council
Exhibit Opens | Kentwood Arms Hotel |
| 8:30 A.M. | Committee Meetings | Committee Chairman Rm. |
| 9:00 A.M. | Business Meeting | Kentwood Arms Hotel |
| 10:15 A.M. | Leave for Ellis Art Center
S.M.S. College | |
| 10:30 A.M. | Coffee and Donuts
Courtesy of Delta Phi
Delta, Honorary Art
Fraternity | Ellis Art Center SMS |
| | Display of Mr. Jones' work | |
| 11:00 A.M. | General Session | Ellis Art Center SMS |
| | Speaker: Euine Fay Jones
Professor of Architecture
University of Arkansas | |
| 12:05 P.M. | Return to Kentwood Arms Hotel | |
| 12:30 P.M. | Lunch | Kentwood Arms Hotel |
| | Welcome: Mayor E. L. Anderson | |
| | Speaker: Edgar Albin
Head, Department of Art
S. M. S. College | |
| 2:00 P. M. | Break | |

SATURDAY - MAY 2ND, 1964 (Continuation of Saturday events)

2:30 P.M.

General Session

Kentwood Arms Hotel

Panel Discussion

Topic: COMMUNITY RESPONSIBILITY

Moderator: Louis Geis, President
K. C. Chapter, A.I.A.

Panelists: Euine Fay Jones
Edgar Albin
Ralph Burgard
George Kassabaum, President
St. Louis Chapter, A.I.A.

3:00 P.M.

Ladies Activity

Kentwood Arms Hotel

Watercolor Painting Demonstration
by Bob Johnson, Educational Curator
of Springfield Art Museum

Painting to be awarded to a member of
the audience at the end of the
demonstration

4:00 P.M.

Break

6:30 P.M.

Cocktails

South Pool Terrace

Kentwood Arms Hotel

Courtesy of Kansas City Chapter
of Producers Council

8:00 P.M.

Annual Architects' Day
Banquet

Kentwood Arms Hotel

Invocation

Introductions

Speaker: Mr. Ralph Burgard
Executive Director
St. Paul Council of Arts and Sciences
St. Paul, Minnesota

SUNDAY - MAY 3RD, 1964

All guests are urged to take advantage of the Spring splendor of the nearby hill and lake region

Ladies are invited to attend all general events

Exhibit, Kentwood Arms Hotel. All members, ladies and visitors are urged to visit displays of Producers' Council Members

Registration Fees: Per Person

Members. \$5.00

Ladies Free

Employees. \$2.50

Non-Members. \$5.00

Students Free

Kansas City Producers Council Free

Friday Night Buffet. \$4.75 per person

Saturday Luncheon \$2.50 per person

Saturday Night Banquet \$5.00 per person

All members are invited to bring interested guests.



MISSOURI ARCHITECTS ATTENDING 1964 ARCHITECT'S DAY SHOULD PLAN TO SPEND THE REST OF THE WEEKEND IN OZARK COUNTRY OF MISSOURI, UNSURPASSED IN BEAUTY ANYWHERE IN THE WORLD.

ARCHITECT'S DAY HEADQUARTERS

KENTWOOD ARMS HOTEL

SPRINGFIELD, MISSOURI

S P E A K E R S

PROF. EDGAR A. ALBIN

HEAD, DEPARTMENT OF ART
SOUTHWEST MISSOURI STATE COLLEGE
SPRINGFIELD, MISSOURI

Mr. Albin teaches courses in the history of art, art criticism at S.M.S. He holds degrees from the University of Tulsa, Oklahoma, State University of Iowa and has done additional graduate work at the Arizona State College in Flagstaff. Since September, 1962, he has been serving as head, Department of Art, S.M.S.



Throughout his teaching career, he has been closely identified with general education programs, and has taken a very active part in developing and administering both the basic course in the Fine Arts required of all students in the College of Arts and Sciences at the University of Arkansas, as well as the humanities courses there. He served from 1959 to 1962 as chairman and coordinator of the humanities at the University of Arkansas. During the summer sessions of 1950, 51, and 52, he was a visiting professor at Stetson University, where he cooperated with Dr. John Hicks, now Dean of Special Programs at Southern Methodist University, and other Stetson University professors in setting up the integrated course in the arts, "20th Century Arts and Letters."

Ralph Burgard, Executive Secretary of the Saint Paul Council of Arts and Sciences, was born in Buffalo, New York and attended Dartmouth College.

Mr. Burgard was manager of the Rhode Island Philharmonic Orchestra and Associate Manager of the Buffalo Philharmonic Orchestra.

He was the director of Winston-Salem (N.C.) Arts Council, and he became director of the Saint Paul Council of Arts and Sciences. In 1959, the Saint Paul Council successfully completed its first annual united campaign for \$149,000 to raise operating funds for six member agencies including the Gallery, Science Museum, Philharmonic Society, Theatre, Opera and Schubert Club. The Council is also directing the building of the \$2,500,000 center which will house the Science Museum, Art Gallery and Theatre. This Arts and Science Center will be completed in the Fall of 1964.



Mr. Burgard has been a director of the American Symphony Orchestra League and chairman of Arts Council International Conferences in 1956 and 1960. He has been a faculty member of the American Symphony Orchestra League Management Course and is an incorporator and Board member of Community Arts Councils, Inc., the national service organization for arts councils.

Euine Fay Jones was born January 31, 1921, in Pine Bluff, Arkansas.



He received his academic education at the University of Arkansas and the Rice Institute. Mr. Jones taught at the School of Architecture, University of Oklahoma from 1951-53 and has been teaching Design and History of Architecture at the University of Arkansas, Department of Architecture since 1953.

Among the awards won by Mr. Fay Jones are the University of Arkansas Faculty Achievement Award in Research, the Blue Key Distinguished Faculty Award in Research 1960-61 and First Honor Award by the American Institute of Architects, in cooperation with LIFE magazine and HOUSE AND HOME magazine "HOMES FOR BETTER LIVING AWARDS PROGRAM" (small house category) 1961. Same Award (large house category) 1961.

He is well known for his outstanding design projects in the Ozarks.

RIVERSIDE INN Ozark, Missouri

Friday Evening May 1 outing starting at 5:30 P.M

Rambling along the banks of the scenic Finley River, deep in the Ozark countryside, you will find Riverside Inn, a unique spot for dining and dancing, established in 1919 by a native Ozarkian family. Here you will enter another world where native charm is in abundance. The Inn is completely filled with paintings created by the owner, as well as other local artists. Dining and dancing will be centered on the outdoor terrace under the brilliant Ozarks stars.

WATERCOLOR U. S. A. PREVIEW

Will be opened to members of the architectural profession for a preview showing on Friday afternoon, May 1st, from 1 to 4 p.m.

The show, largest of its kind in the United States, is slated to run May 3 through June 7. A total of \$5,175.00 in prize money is available this year, in the form of various cash and purchase awards.

Watercolor U.S.A. is devoted entirely to watercolor paintings, either transparents or opaques.

Last year, over 1300 paintings from all over the country were submitted by about 700 artists, and this year's competition is expected to be even greater.

Jurors for the show, selected to represent the east, west, and central portions of the United States, are all well-known professional painters.

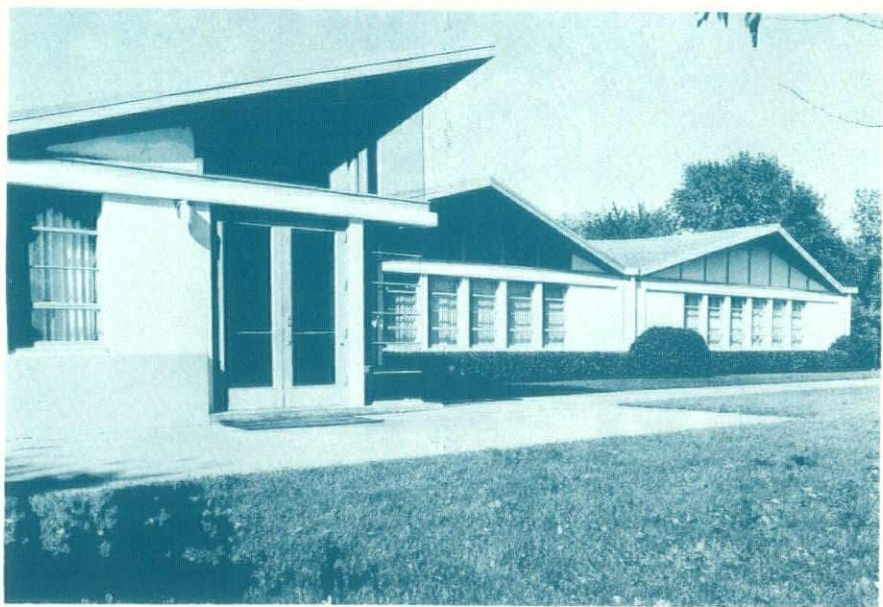
Of the hundreds of watercolors entered each year, about 200 are selected to compete for the various awards.

Awards coming from points as distant as California, Texas, and New York City, as well as from local sources.

The Springfield Art Museum sponsors the event as a non-profit venture.



PHOTO of ELLIS HALL OF FINE ARTS . . Southwest Missouri State College where Mr. Euine F. Jones, professor of architecture, University of Arkansas, will lecture at 10:30 a.m. on May 2nd. An exhibition by Mr. Jones will be on review in the art gallery. All of this is in conjunction with the annual meeting of the Missouri Association of Registered Architects.

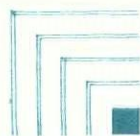


A special preview showing for Architects, their wives and guests of "Water Color U.S.A. will be held Friday afternoon May 1, 1964, at the Springfield Art Museum.



KANSAS CITY CHAPTER OF

THE PRODUCERS' COUNCIL



The Producers' Council, a national organization of manufacturers of quality building materials and equipment, was organized by the American Institute of Architects in 1921 to improve the level of advertising and sales promotion literature sent to architects.

Now, an association comprised of nearly 200 manufacturers and 30 product trade associations, the Council's over-all purpose has widened to include promoting the sale and proper use of their building materials.

At the national level, the Producers' Council operates as an organization working with other national organizations and at the local, or more personal level as a group working with others through a chapter structure.

We are pleased to have the Producer's Council participate in our Annual Architects Day and are grateful to all members.

Visit their exhibitions and get acquainted with these men and their products.



LIST OF ADVERTISERS

Registration Board	7
Registration Board	8
Business Interiors, Inc	35
Blumcraft of Pittsburgh	36
Service Blue Print & Photo Copy Co	38
Henges Company, Inc	39
The Stone Center	40
The Carter-Waters Corp	41
Hydraulic Press Brick Company	42
Usona Mfg. Co	42
Styro Products, Inc	43
James B. Fisher, Jr	44
Desco	44
Zumwalt Corporation	45
Chassaing Lighting, Inc	45
Sonken-Galamba Corporation	46
Cupples Products Corporation	47
Drevbil Company	48
Brod-Dugan Company	48
Metalworking Industry	48
Granco Steel Products Company	49
Shade Wilson & Son, Inc	49
Alton Brick	50
Wilson Concrete	51
Buildex, Inc	52
Archway Sales Associates, Inc	53
Winco Ventilator Co	53
National Brick Company	54
Zonolite Company	55

BUSINESS INTERIORS, INC.

1000 WASHINGTON AVENUE

CEntral 1-6585

distributors for

knoll • herman miller • dux • b. l. marble • all steel equipment
furnishers of contract interiors

space planning • food service engineering • interior specifying

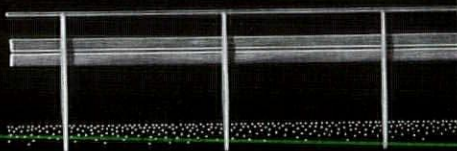
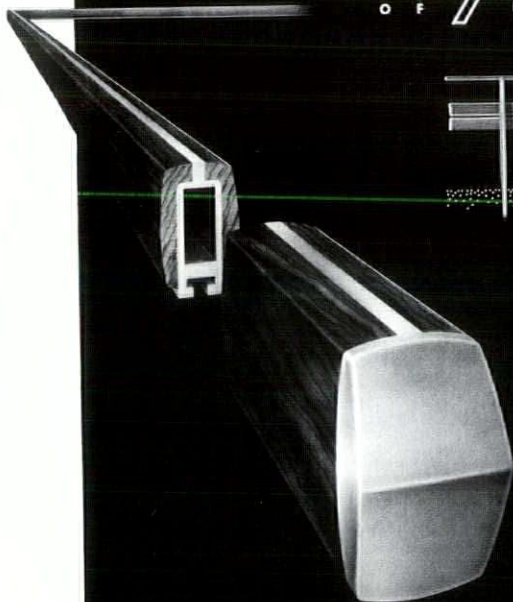
BI

SAINT LOUIS



Blumcraft

OF PITTSBURGH



NEW WOOD HANDRAILS with an aluminum core substructure are furnished as a complete unit by Blumcraft. The solid walnut wood, with a natural hand-rubbed oil finish, is bonded to the aluminum at Blumcraft's factory. This new railing concept combining wood and metal is trademarked **RAILWOOD***

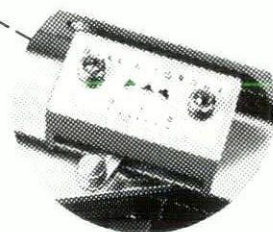
Complete 1964 catalogue available from Blumcraft of Pittsburgh, 460 Melwood St., Pittsburgh 13, Pa.

*Trademark © 1964 Blumcraft of Pittsburgh

BIG NEWS IN DRAFTING!



the new
Hamilton
TORSION
AUTO-SHIFT
DRAFTING TABLE
with DIAL-A-TORQUE*



DIAL-A-TORQUE is Hamilton's latest step forward in drafting table control. Truly *fits the drafting table to the draftsman* by letting him "dial" the amount of torsion that offsets the weight of added drawing board equipment. Gives him fully counterbalanced board angling with easy fingertip control.

Many more important advances . . . from newly increased, full 14" vertical board travel to new desk-height and stand-up drafting convenience . . . extra storage space . . . a reference file unit that mounts at any corner . . . and new non-glare Stratacore® board surface.

See the new Hamilton Torsion Auto-Shift Drafting Table with DIAL-A-TORQUE, now.

*patent applied for

Engineering & Drafting supplies, paper and equipment

Distributors of

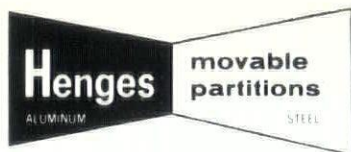


drafting materials

SERVICE

BLUE PRINT & PHOTO COPY CO.

710 PINE STREET • SAINT LOUIS 1, MO. • CHestnut 1-0688



Versatile

PARTITION WALLS

ADVANTAGES

ATTRACTIVE—Styled to fit any decor. Blend or contrast by selecting from the widest range of colors, textures and materials.

LOW COST—Unique construction makes this completely movable and reusable partition the most economical wall available.

MOVABLE—Easily moved and reused. Henges Movable partitions can be relocated quickly and often with few or no additional parts.

FUNCTIONAL—Improves office efficiency and morale by creating private and semi-private work areas. Organizes floor space for maximum effectiveness.

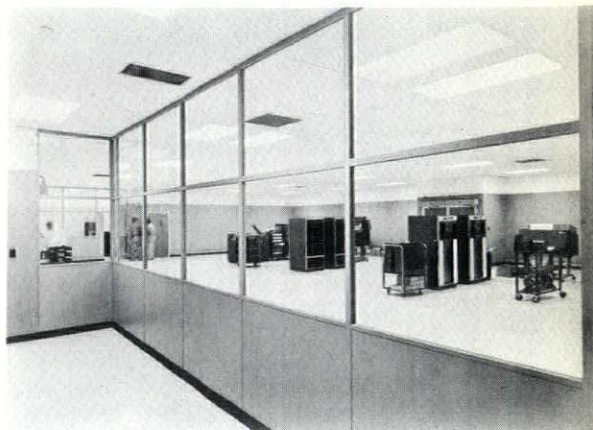
VERSATILE—Unlimited choice. Modules, colors, materials, glazing and heights can all be selected with complete freedom of design.

EASE OF INSTALLATION—The usual clutter and disturbance eliminated, providing earlier occupancy. In existing buildings, installations are often made during normal office hours without upsetting routine.

IMMEDIATE DELIVERY—Generally the only partition stocked by local distributors and available for prompt installation. Local warehousing is supported by a large factory inventory.

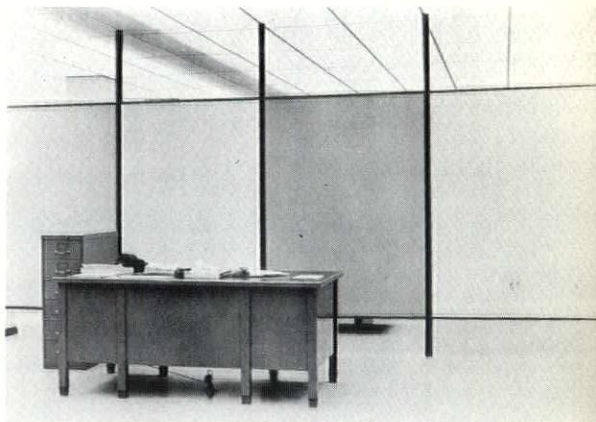
LOCAL SALES & SERVICE—There are more than 90 distributors who sell and install these versatile partitions. These responsible, well known local companies are factory trained. Write for the name of the Representative in your area.

EXPERIENCE—Since 1932, the Henges Company has served the building industry and maintained a reputation of quality and integrity.



ALUMINUM

STEEL

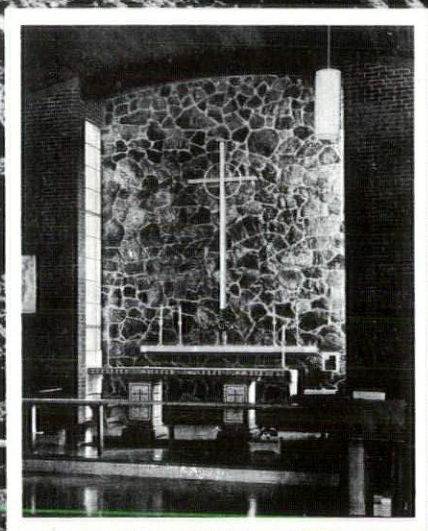


MANUFACTURED BY



HENGES COMPANY, INC., ST. LOUIS 3, MO.

For
Natural
Beauty...
**NATURAL
STONE**



*St. Stephens Episcopal Church — St. Louis
Charles Norak Jr., Architect*

LAVA

**SANTA FE PATTERN
SOCORRO PATTERN**

Quarried in New Mexico from recently discovered deposits LAVA is estimated to be thousands of years newer than other deposits and therefore much cleaner and burdened with far less impurities.

Santa Fe pattern, portrayed strikingly above, is richly textured material selected to a generally flat plane moderately convex or concave. This texture came about as each molten layer slid forward over another already cooled. Color is a dark brown ranging to brown to black, thus

giving an assortment of pleasant brownish blacks.

Santa Fe Pattern averages $2\frac{1}{2}$ " to 4" in wall thicknesses. Also available in the Socorro Pattern, the "chunky" or "lumpy" version which also features the rich brownish blacks.

As seen in the church chancel pictured above, Lava emulates a strong hand-carved effect, still maintaining nature's rugged simplicity. More information on Lava is available from:



THE STONE CENTER

3200 BRANNON AVE. ST. LOUIS 39, MO. PR. 1-1000

NEW



G-E Silicone Sealant lasts twice as long!

General Electric Silicone Construction Sealant is virtually immune to attack by ozone, weather, temperature, oxidation and ultra-violet. Twenty years of silicone rubber service in military and aircraft uses have proved it.

Accelerated aging tests demonstrate that G-E Silicone Construction Sealants will outlast all other types of elastomeric sealants as much as 2 to 1.

General Electric Silicone Construction Sealant comes ready to use. No mixing or accelerators. It flows the same easy way at sub-zero

temperatures or 120°F. It is permanently elastic, will expand or compress easily, and bonds to all building materials. And it's available in a variety of non-fading colors (white, aluminum, translucent, neutral and black are in stock) that will never run or stain building materials.

Let us demonstrate why G-E Silicone Construction Sealant will probably last as long as your building itself.

GENERAL  ELECTRIC

Silicone Products Dept., Waterford, N. Y.

AVAILABLE FROM

Styro Products, Inc.

1590 Page Industrial Blvd., St. Louis, Mo.

Phone: 314-HA 9-2100

RENDERINGS

COLOR

BLACK & WHITE

JAMES B. FISHER, JR.

2 GRAYBRIDGE LANE • ST. LOUIS 24, MO. • WY. 3-9460

There is one thing certain: architecture has never been called a destructive art. Nowhere does a nation's constructive genius show itself more plainly, more simply, or more often than in its buildings. Architects, by nature as by training, are on the constructive side. — Hugh Ferriss

A GOOD WRITER is a conscientious craftsman who goes to infinite trouble and great risk in a search for his material. — Ernest Hemingway

THERE IS A DIFFERENCE
in
ALUMINUM DOORS
You'll Believe It When You See

Desco

QUALITY - APPEARANCE - STRENGTH
RECORD OF DEPENDIBILITY

FOR THE COMPLETE DESCO-STORY SEE

THOMAS J. FINAN CO., INC.
12409 ST. CHARLES ROCK ROAD
ST. LOUIS, MISSOURI

EDELMAN LYON CO.
325 WEST 80TH. STREET
KANSAS CITY, MO.

ZUMIWALT

CORPORATION

PROSPECT 2-8500
1617 LAFAYETTE AVE.
St Louis 4, Mo.

SCREENS - PATIO DOORS
GARAGE DOORS
ELECTRIC GARAGE DOOR OPERATORS
BI-FOLD CLOSET DOORS - WOOD - STEEL CAULKING THIOCAL

Consider what heavy responsibility lies upon you in your youth, to determine, among realities, by what you will be delighted, and, among imaginations, by whose you will be led.

- Ruskin

Committee work is like a soft chair - easy to get into but hard to get out of.

- Kenneth J. Shively

CHASSAING LIGHTING, INC.

7603 FORSYTH BLVD • CLAYTON 5, MISSOURI • PHONE PARKVIEW 5-8888

BROOKS CHASSAING

REPRESENTING:

R. A. MANNING CO. INC.
SHEBOYGAN, WISC.

THE EDWIN F. GUTH CO.
ST. LOUIS, MISSOURI

CIRCULATION 2700

PRINTED BY
FRANK NEWMAN PRINTING CO.
4718 GRAVOIS AVE.
ST. LOUIS, MO. 63116

"There is an old saying among painters, that you have to make a hundred watercolors before you know how to make one properly. Essentially true—but don't let it scare you. You will find, as I did, that though the work of learning is thought of as hard, it is really pleasurable; that each technical point you conquer brings its own separate satisfaction.."

— Ted Kautzky

Most of us have had three kinds of teachers: those whom we forget; those whom we forgive; and those whom we remember.

— Lewis Christman.



STARK STRUCTURAL GLAZED
TILE WALLS OFFER...

- FIRE-PROOF SAFETY**
No fire hazard when exposed to heat.
- LOWEST MAINTENANCE**
- INITIAL ECONOMY**
- PERMANENT COLOR**
- SCRATCH RESISTANCE**
- UNEQUALLED DURABILITY**

Only Structural Glazed Tile offers all of these performance, esthetic and economical advantages for wall construction.

Only Stark offers Structural Glazed Tile in such a wide variety of types to satisfy requirements of fire safety, sanitation, economy and design versatility.

STARKUSTIC
Structural Glazed Tile with outstanding acoustical properties. Control noise with a wall tile that offers durability, fire resistance and scratch resistance. Easy to clean glazed finish in a wide choice of colors. Available in a wide range of perforation patterns, sizes and colors.

SUPERTILE
New 8" x 8" x 1/2" Super-Tile can insulate wall installations by as much as 50%. Vertical grooving permits easy handling, easy cutting and finished edge finish. Available in glazed or unglazed.

SCULPTURED
Exclusive Stark Sculptured Glazed Tiles have all the advantages of Structural Glazed Tile plus deep sculptured face designs offering almost unlimited design freedom. Available in 3 patterns and 32 colors.

FULL SERVICE
We will be most happy to be of service at any time during your planning, specifying, bidding or building. Full information including sizes, colors, samples and prices are available. You'll find us convenient to write or call.

EXCLUSIVE DISTRIBUTORS: **SONKEN-GALAMBA CORPORATION**
2nd & Riverview K. C., Kansas 66118 Phone MU 618-1400

Also Exclusive Distributors for:
**ARKETEX STRUCTURAL GLAZED TILE, DARLINGTON GLAZED BRICK, &
MOSAICOS RIVERO PRECAST TERRAZZO FLOOR & WALL TILE.**

AN INVITATION



CUPPLES PRODUCTS CORPORATION

— cordially invites all architects who
will attend the 1964 A.I.A. National Convention,
St. Louis, June 14-18

to

A PLANT TOUR

Monday Morning, June 15

See the country's largest architectural aluminum fabricating and finishing facilities. Busses will leave from the Chase-Park Plaza Hotel about 9:00 A.M. and will return in time for the opening luncheon.

and to

VISIT ITS EXHIBIT in the Chase Lounge during the convention. Our newly developed thermally insulated windows will be featured along with Duranodic finishes, aluminum windows, doors and ceiling grid.

CUPPLES PRODUCTS CORPORATION

2650 South Hanley Road
St. Louis, Missouri

"WE PROTECT YOUR DESIGN"

DREVBIL CO.

**ARCHITECTURAL & ENGINEERING
FIELD REPRESENTATIVE**

9227 BELLEFONTAINE ROAD

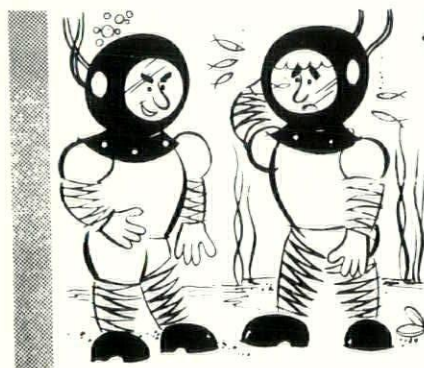
ST. LOUIS 37, MISSOURI

"In the past few years watercolor has assumed the importance in the art world it rightly deserves. Watercolor with its freshness and vitality has an appeal distinctly its own. Today the old style of watercolor painting, which was largely thin washes over pencil, has been so developed that in its place we now find paintings of a depth and permanency that previously could have been achieved only in other mediums."

— Herb Olsen

If the poor quality of teaching, common enough in college faculties, was displayed by the football coach, he would lose his job. Furthermore, if he does not produce victory fairly often, he will lose his job. What would happen to college teachers if their tenure of appointment were determined by the scholarly efficiency of their pupils.

— William Lyon Phelps



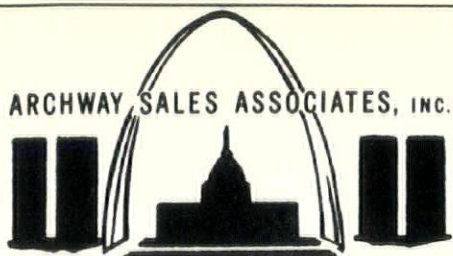
... Next time Joe, list sheet metal items under "Sheet Metal" in your specifications and you won't get a leaker!



JAMES S. CRUMP
Executive Secretary

8301 Maryland, St. Louis, Mo. 63105
Phone: PA 5-1564

BROD-DUGAN COMPANY
DISTRIBUTOR OF VICTREX



ARCHWAY SALES ASSOCIATES, INC.

1921 S. BRENTWOOD BLVD.
ST. LOUIS, MO. 63144
PHONE: WO 1-7771
CALL: JAY JOLLY
TOM POHOLSKY



REPRESENTING:
THE BRUNSWICK CORP.

SCHOOL FURNITURE - CABINETS
MODUWALL - FOLDING PARTITIONS
FOLDING GYMNASIUM SEATING
BASKETBALL STOPS
FOLDING STAGES

A creative architecture for America can only mean an architecture for the individual – Frank Lloyd Wright

... it is no longer easy to achieve beauty by the same way in which old societies did ... now we have a larger and more difficult order to achieve, and our spirit will shine through only if we are true to ourselves and never forget that it is man that we must serve.

Pietro Belluschi

The mass of men worry themselves into nameless graves, while here and there a great unselfish soul forgets himself into immortality.

– Ralph Waldo Emerson

The best investment is in the tools of one's own trade.

– Benjamin Franklin

Learning without thought is labor lost; thought without learning is perilous.



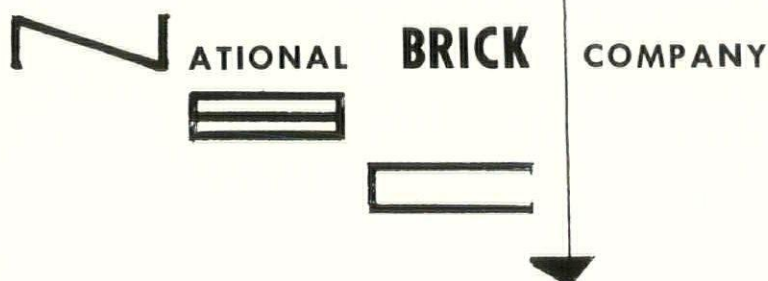
Winco Ventilator Co.

INCORPORATED
Manufacturers of Aluminum Windows

NOT JUST A WINDOW... A WINCO

C. E. GARRISON
ENGINEERED SALES REPRESENTATIVE

EVERGREEN 1-8033
533 BITTNER ST.
ST. LOUIS 15, MO.



"When you care enough to use the best"

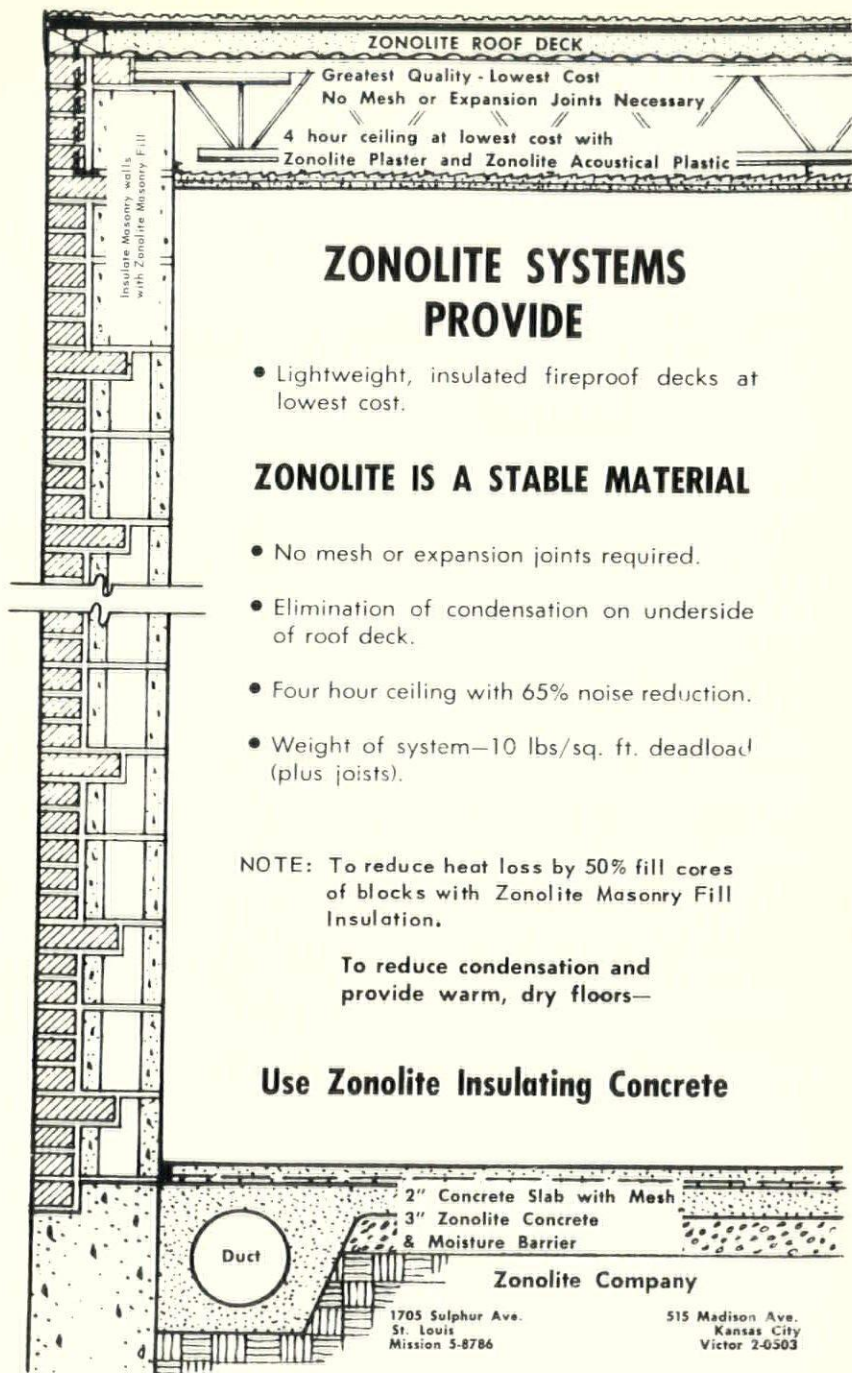
N O T I C E

The Missouri Architect is the official journal of the Missouri Association of Registered Architects.

It is mailed to:

- Registered Architects in Missouri
- Consulting Engineers in Missouri
- College Libraries in Missouri
- Building Commissioners in major Missouri cities
- Major High School Libraries in Missouri
- Major Building Contractors in Missouri
- County Courts in Missouri
- Mayors of major cities in Missouri
- State Building Officials
- Architectural Students at Washington University

WRITE TO PAUL DOLL FOR MEMBERSHIP APPLICATION. DUES ARE ONLY \$10.00 PER YEAR.



ZONOLITE SYSTEMS PROVIDE

- Lightweight, insulated fireproof decks at lowest cost.

ZONOLITE IS A STABLE MATERIAL

- No mesh or expansion joints required.
- Elimination of condensation on underside of roof deck.
- Four hour ceiling with 65% noise reduction.
- Weight of system—10 lbs/sq. ft. deadload (plus joists).

NOTE: To reduce heat loss by 50% fill cores of blocks with Zonolite Masonry Fill Insulation.

To reduce condensation and provide warm, dry floors—

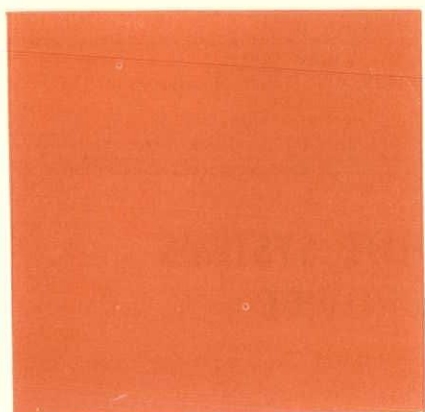
Use Zonolite Insulating Concrete

2" Concrete Slab with Mesh
3" Zonolite Concrete
& Moisture Barrier

Zonolite Company

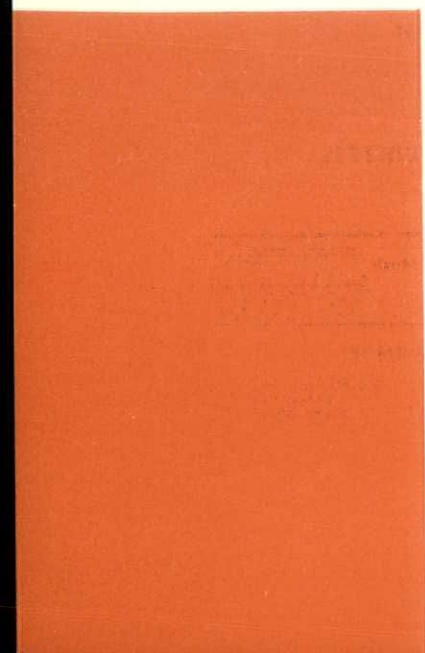
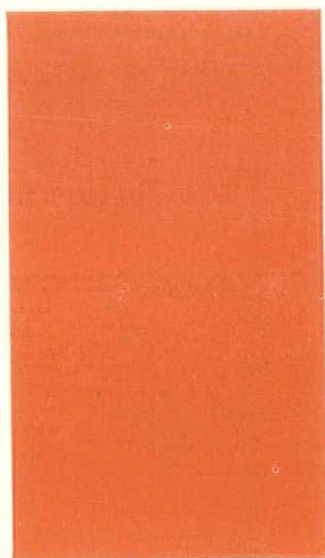
1705 Sulphur Ave.
St. Louis
Mission 5-8786

515 Madison Ave.
Kansas City
Victor 2-6503



"We see our cities, great and small, falling apart, disintegrating. We talk a great deal about replanning them. But if the only changes which "replanning" can bring about are ones which will leave things the same, there is little use. For one thing, we have never really answered the question, what kind of a city are we planning for."

— Henry S. Churchill



"The solution of a problem can only be found in the problem itself."

— Louis Sullivan

"Architecture should express the general and universal philosophy of the architect rather than his over-emphasized or sophisticated so-called originality."

— Alfred Roth

"Lack of integration is responsible for a good part of the traffic difficulties which beset city and nation—difficulties in the movement of people and of goods. This problem has been the one most vigorously attacked everywhere, but the attack has been without much effect because the basic plan has been untouched. The traffic planner who takes traffic counts and then recommends a series of street widenings and lights and intersection remodelings is like a doctor who takes blood counts and then recommends an old-fashioned bleeding as a remedy for arteriosclerosis. Solution must be by way of complete diagnosis: railroads, markets, docks, airports, congested areas, and recreational areas must be brought into some kind of proper relation with each other, the lines of future growth plotted, and controls put into effect. The design of streets and highways does not make sense unless the land use along them, and at their terminations, is strictly regulated to suit the type and kind of traffic for which they are designed."

— Henry S. Churchill

An intelligent man is very much concerned about the future because that's where he's going to spend the rest of his life.

— The Gilcrafter

MISSOURI
ASSOCIATION
OF REGISTERED
ARCHITECTS

MISSOURI
ASSOCIATION
OF REGISTERED
ARCHITECTS

MISSOURI
ASSOCIATION
OF REGISTERED
ARCHITECTS

MISSOURI
ASSOCIATION
OF REGISTERED
ARCHITECTS