

AMERICAN INSTITUTE
OF ARCHITECTS
NOV 5 1963
LIBRARY

MILLS OTURI ARCHITECT

OCTOBER 1963

THE MISSOURI ARCHITECT

VOLUME 11

OCTOBER, 1963

NUMBER 4

PUBLISHED QUARTERLY AS THE OFFICIAL JOURNAL OF THE MISSOURI ASSOCIATION OF REGISTERED ARCHITECTS, 210 MONROE STREET, JEFFERSON CITY, MISSOURI. SUBSCRIPTION RATE \$1.50 PER YEAR TO MEMBERS.

EDWARD J. THIAS, EDITOR

300 DAILY RECORD BUILDING,

1004 MARKET ST., ST. LOUIS 1, MISSOURI

MISSOURI ASSOCIATION OF REGISTERED ARCHITECTS

OFFICERS

PRESIDENT

RICHARD P. STAHL
1465 S. GLENSTONE
SPRINGFIELD

VICE-PRESIDENT

EDWARD J. THIAS
300 DAILY RECORD BLDG.
ST. LOUIS 1

SECRETARY

EDWIN C. WATERS, III
322-28, EAST WALNUT
SPRINGFIELD

TREASURER

GENE ENGLEHART
120 E. HIGH STREET
JEFFERSON CITY

DIRECTORS

DAVID M. BREY

1963-1964
306 E. 12TH STREET
KANSAS CITY

KENNETH O. BROWN

1962-1966
426 CITY HALL
ST. LOUIS 3

DAVE P. CLARK

1960-1964
302 MILLER BLDG.
COLUMBIA

FRED E. DORMEYER, JR.

1961-1965
120 N. SPRIGG
CAPE GIRARDEAU

LOUIS H. GEIS

1962-1966
704 DAVIDSON BLDG.
KANSAS CITY 8

WALTER B. KROMM

1963-1967
111 S. MERAMEC
CLAYTON 5

RICHARD L. NICHOLS

1963-1967
1461 S. JEFFERSON
SPRINGFIELD

DAVID W. PEARCE

1963-1965
721 OLIVE STREET
ST. LOUIS 1

MAXWELL T. SANDFORD

1960-1964
800 WESTPORT ROAD
KANSAS CITY

EXECUTIVE DIRECTOR

PAUL N. DOLL
210 MONROE STREET
JEFFERSON CITY

LEGAL COUNSEL

JOHN E. BURRUS, JR.
HENDREN & ANDRAE
JEFFERSON CITY

M A R A C O M M I T T E E S

LEGISLATION

KENNETH O. BROWN, CHAIRMAN

DAVID M. BREY

RICHARD L. NICHOLS

DAVID P. CLARK

MEMBERSHIP

EDWARD J. THIAS, CHAIRMAN

DAVID W. PEARCE

EDWIN C. WATERS

WAYNE D. JOHNSON

MAXWELL T. SANDFORD

LONG-RANGE ADVISORY (PAST PRESIDENTS)

DAVID W. PEARCE, CHAIRMAN

DAVID M. BREY

JOHN C. MONROE, JR.

JOHN M. HEWITT

ROBERT ELKINGTON

DAVID CLARK

LUTHER O. WILLIS

JOHN C. SWEENEY

REX L. BECKER

HAROLD A. CASEY

ARCHITECTS DAY 1964

JOHN M. TAYLOR, CHAIRMAN

PROFESSOR ED ALBIN, (S.M.S.)

EDWIN C. WATERS

PAUL F. RICH

EDUCATION AND AWARDS

FRED E. DORMEYER, CHAIRMAN

WALTER S. KROMM

EDWIN C. WATERS

ROWLAND BOCKHORST

WILLIAM M. CONRAD

INTER-PROFESSIONAL

JOHN D. SWEENEY, CHAIRMAN

JOHN C. MONROE

ETHICS AND PRACTICE

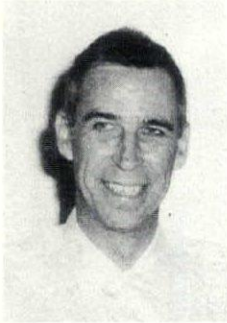
REX L. BECKER, CHAIRMAN

DAVID F. CLARK

MAXWELL T. SANDFORD

LOUIS GEIS

PRESIDENT'S LETTER



The Missouri Association of Registered Architects has been making, during the past few years, tremendous strides forward in serving the architects in the State of Missouri.

Our legislative program shows signs of becoming a potent force in the legislature of the State. Our Ethics and Practice Committee is working very diligently, along with our counsel, to provide a professional atmosphere in which architects may work. Each year Architects' Day is gaining more widespread recognition for the profession from the news media, the general public, and the public officials.

The Missouri Association of Registered Architects is an organization that each of us can indeed be proud of. It certainly deserves your continued support and also deserves an effort on the part of everyone toward increasing the membership in the association.

Please mark Architects' Day on your calendar for May 1st and 2nd, in Springfield, Missouri. The program will be outstanding both for you and your wife, and your presence can indicate to the entire State the solidarity of the architectural profession.

Richard P. Stahl

GENE ENGLEHART



Gene Englehart, Jefferson City, passed away September 16, 1963 as a result of an automobile accident three days earlier. At the time of his untimely death he was serving as treasurer of M.A.R.A., a position he faithfully had held since 1957.

Mr. Englehart was a partner in the architectural firm, Drew and Englehart. He was in charge of the firm's operation in Missouri's capital city.

He died in St. Luke's Hospital, St. Louis where he was taken following a one-car accident in Franklin County. He was the only passenger in his automobile at the time of the accident.

Surviving are his wife and five children, the oldest of which is nine years of age. Other survivors are his parents of Jefferson City, and two brothers.

Funeral services were held in Jefferson City September 18 with Rev. Russell Lytle officiating. Burial was at the Riverview Cemetery near Jefferson City.

RESOLUTION OF RESPECT

WHEREAS, *Gene Englehart has served the citizens of the State of Missouri as a distinguished architect being one of the outstanding young Missourians in his profession, and*

WHEREAS, *Gene has been treasurer of the Missouri Association of Registered Architects throughout most of the life of this statewide organization, and*

WHEREAS, *he has given freely of his time, thought and leadership to the affairs of this organization, not only in his official duties as treasurer, but also in many other phases of vital leadership, and*

WHEREAS, *Gene Englehart was one of the finest young Americans we have ever known in any walk of life,*

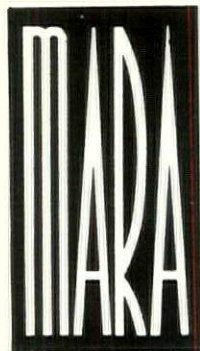
WHEREAS, *a serious accident resulted in his death September 16th,*

NOW, THEREFORE, BE IT RESOLVED, *that the Board of Directors of the Missouri Association of Registered Architects in session Wednesday, September 17, 1963, in Jefferson City unanimously approve this Resolution of Respect and authorize it to be presented to Mrs. Gene Englehart and family in this hour of sadness, and, further authorize it to be reproduced in the pages of the next issue of the MISSOURI ARCHITECT.*

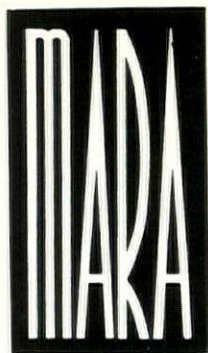
Richard P. Stahl
President

Attest:

Edwin C. Waters
Secretary



PURPOSES OF



To improve the relations between members of the architectural profession and the general public through a program of education and cooperation.

To encourage the active participation of architects in civic affairs generally, to the end that the general public may become better acquainted with and more fully appreciate the contributions of the architectural profession toward the peace, health, culture and security of society, and to the end that all Missouri architects may become more keenly conscious of their obligations to the public, and their duty as members of the profession, and as citizens, to contribute their full share toward the preservation of the peace, health and safety of the citizens of this State.

To encourage its members, by both precept and example, to obey the laws of the State of Missouri, requiring and providing for the registration of architects, and to assemble and disseminate such information through the State of Missouri, as will tend to induce the public generally to obey said laws.

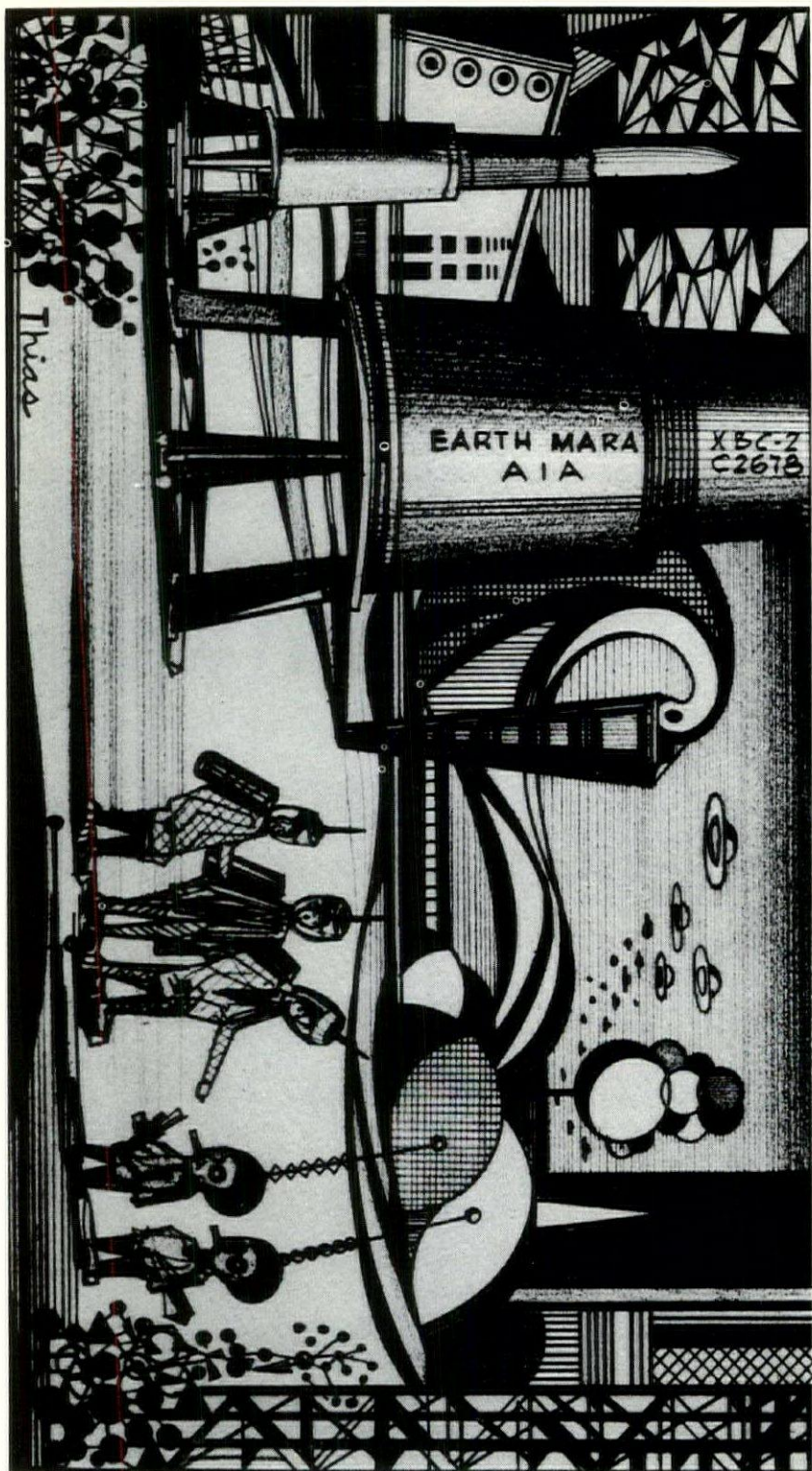
6 2 0

ARCHITECTS ARE
MEMBERS OF

MISSOURI
ASSOCIATION
OF REGISTERED
ARCHITECTS

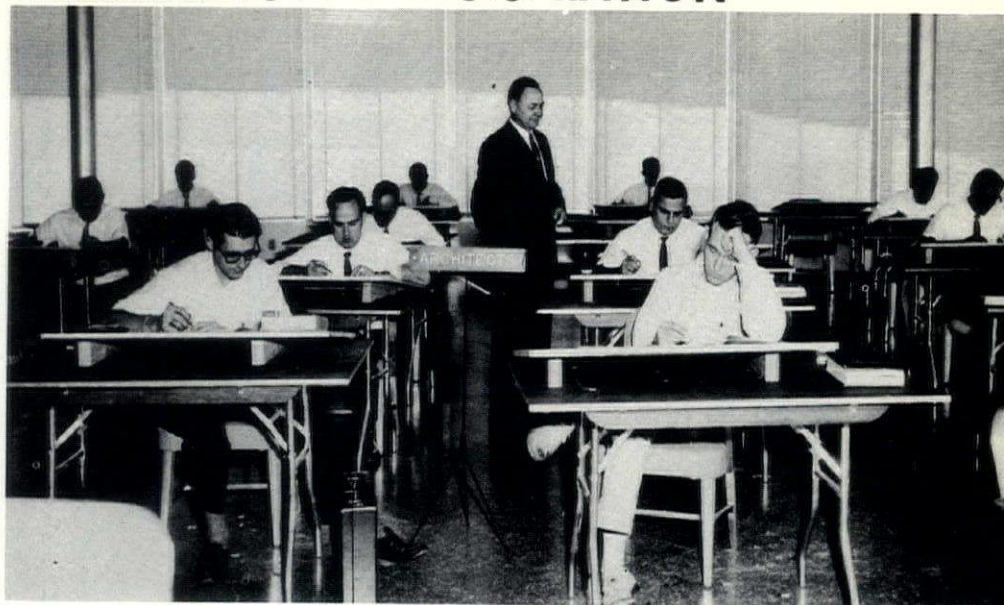
WHOSE PURPOSE IS TO IMPROVE PUBLIC WEL-
FARE THROUGH ADVANCEMENT OF THE ART
AND SCIENCE OF ARCHITECTURE

THE OFFICERS AND DIRECTORS OF THE ASSO-
CIATION HOPE TO MAKE IT A STRONGER AND
MORE INFLUENTIAL ORGANIZATION IN THE
STATE OF MISSOURI IN COORDINATION WITH
THE GREAT GROWTH IN CONSTRUCTION.
MEMBERS OF THE MARA ARE ARCHITECTS EN-
GAGED IN EVERY PHASE OF ARCHITECTURE
AND ARE LOCATED IN EVERY AREA THROUGH-
OUT THE STATE. IF YOU ARE AN ARCHITECT
IN MISSOURI WHO IS NOT A MEMBER, WE THINK
YOU SHOULD BE.



"REGISTRATION ON OUR PLANET REQUIRES 33 YEARS COLLEGE WORK, 21 YEARS ARCHSPACE EXPERIENCE AND YOU MUST PASS A FOUR YEAR TELEVITWITTEN EXAMINATION.." WHAT TYPE OF PROJECT DO YOU EARTH ARCHITECTS PLAN TO BUILD HERE?

ARCHITECTURAL REGISTRATION



Eighty-two persons, a new Missouri record, appeared for registered architect examinations conducted in Jefferson City, September 30 through October 3, 1963 by the State Registration Board for Architects and Professional Engineers. A section of examinees is shown above. The proctor is Hari Van Hoefen, St. Louis architect, chairman, architectural division of the Missouri Board.

Among the eighty-two examinees, seventeen re-took one or more parts of the nine-part Missouri architectural examination. Thirteen took A.I.T. examinations, a new record in Missouri.

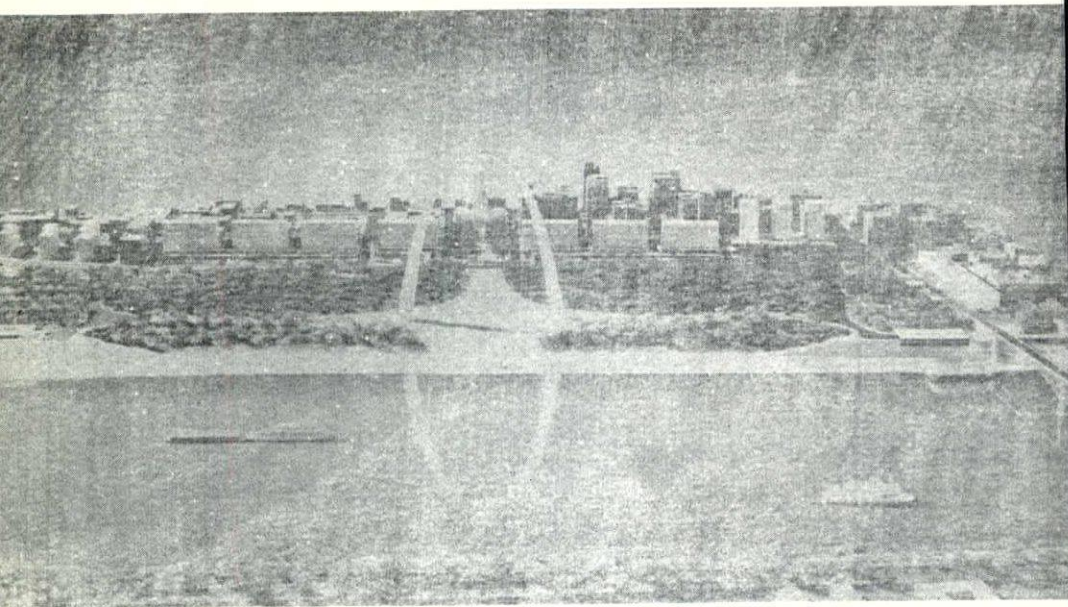
Mr. Van Hoefen had this to say about the A.I.T. program, "We believe the A.I.T. route to registration is very desirable. It is valuable to the profession due to training and supervisory experience received by these young people under the guidance of qualified architects. It greatly broadens experience opportunities for them. The Missouri Board is pushing the A.I.T. program."

Architectural members of the Missouri Registration Board besides Van Hoefen are R. P. Buchmueller, Sikeston and Everett Johns, St. Joseph.

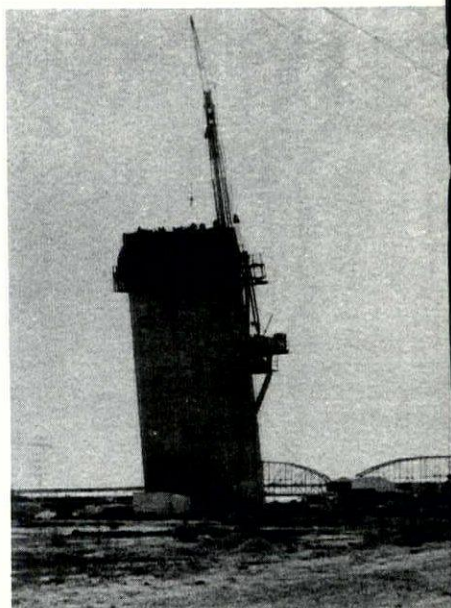
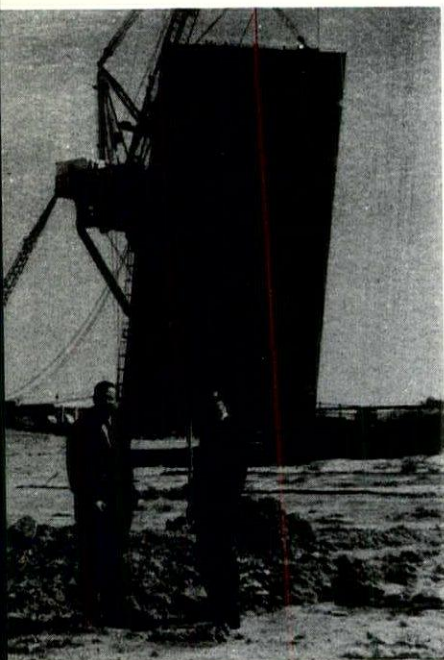
Photo - Speidel.

"...architecture, as a reflection of man's longing for order and for adjustment to his natural surroundings, has always been...regional in its essence and character. In the past it has been mostly a communal art..." Pietro Belluschi.

PROGRESS ON THE SAARINEN ARCH



K. O. Brown, Building Commissioner of the City of St. Louis, and E. J. Thias, Vice President of MARA, inspecting the progress of the great Saarinen arch. The south base is now rising slightly higher than the north base.



PROFESSIONAL CORPORATION LAW OF MISSOURI BECOMES A
STATE LAW OCTOBER 13, 1963. THIS BILL WAS ENDORSED BY
MARA.

SENATE BILL NO. 108

72ND GENERAL ASSEMBLY

INTRODUCED BY SENATOR SPRADLING.

Read 1st time January 23, 1963, and 1,000 copies ordered printed.

Read 2nd time January 28, 1963, and referred to the Committee on Judiciary.

Reported from the Committee February 13, 1963, with recommendation that the bill do pass, with S.C.A. No. 1.

Taken up for Perfection February 14, 1963. Bill declared Perfected and Ordered Printed, as amended.

JOS. A. BAUER, Secretary.

71

AN ACT

Relating to professional corporations and prohibiting certain activities.

Be it enacted by the General Assembly of the State of Missouri, as follows:

Section 1. This act may be cited as "The Professional

2 Corporation Law of Missouri".

Section 2. As used in this act, unless the context clearly
2 indicates that a different meaning is intended, the following
3 words mean:

4 (1) "Professional corporation", a corporation organized
5 under this act;

6 (2) "Professional service", the type of personal service
7 rendered by a person duly licensed by this state as a member
8 of any of the following professions, each paragraph constitut-
9 ing one type:

10 (a) An accountant;

11 (b) An architect or engineer;

12 (c) An attorney-at-law;

- 13 (d) A chiropodist-podiatrist;
14 (e) A chiropractor;
15 (f) A dentist;
16 (g) An optometrist;
17 (h) An osteopathic physician or surgeon;
18 (i) A physician, surgeon or doctor of medicine;
19 (j) A veterinarian;
20 (3) "Regulating board", the board or state agency which
21 is charged with the licensing and regulation of the practice of
22 the profession which the professional corporation is organized
23 to render;
24 (4) "Qualified person", any natural person licensed to
25 practice the same type of profession which any professional
26 corporation is authorized to practice.

Section. 3. The general and business corporation law of
2 Missouri, chapter 351, RSMo., shall be applicable to a pro-
3 fessional corporation organized pursuant to this act except
4 that any provision of this act shall take precedence over any
5 provision of chapter 351 which conflicts with it. The provisions
6 of this act shall take precedence over any law which prohibits
7 a corporation from rendering any type of professional serv-
8 ice.

Section 4. One or more natural persons, each of whom
2 is licensed to render the same type of professional service
3 within this state, may incorporate a professional corporation
4 to practice that same type of professional service by filing
5 articles of incorporation with the secretary of state. The
6 articles of incorporation shall set forth as its purpose the type
7 of professional service to be practiced through the professional
8 corporation and shall otherwise meet the requirements of
9 chapter 351, RSMo. A certificate by the regulating board of
10 the profession involved that each of the incorporators is duly
11 licensed to practice that profession, and that the proposed cor-

12 porate name has been approved, shall be filed in the office of
13 the secretary of state prior to issuance of the certificate of
14 incorporation.

Section 5. 1. A professional corporation may be or-
2 ganized only for the purpose of rendering one type of profes-
3 sional service and service ancillary thereto and shall not en-
4 gage in any other business but shall be deemed to have the
5 following purposes, whether or not authorized by its articles
6 of incorporation:

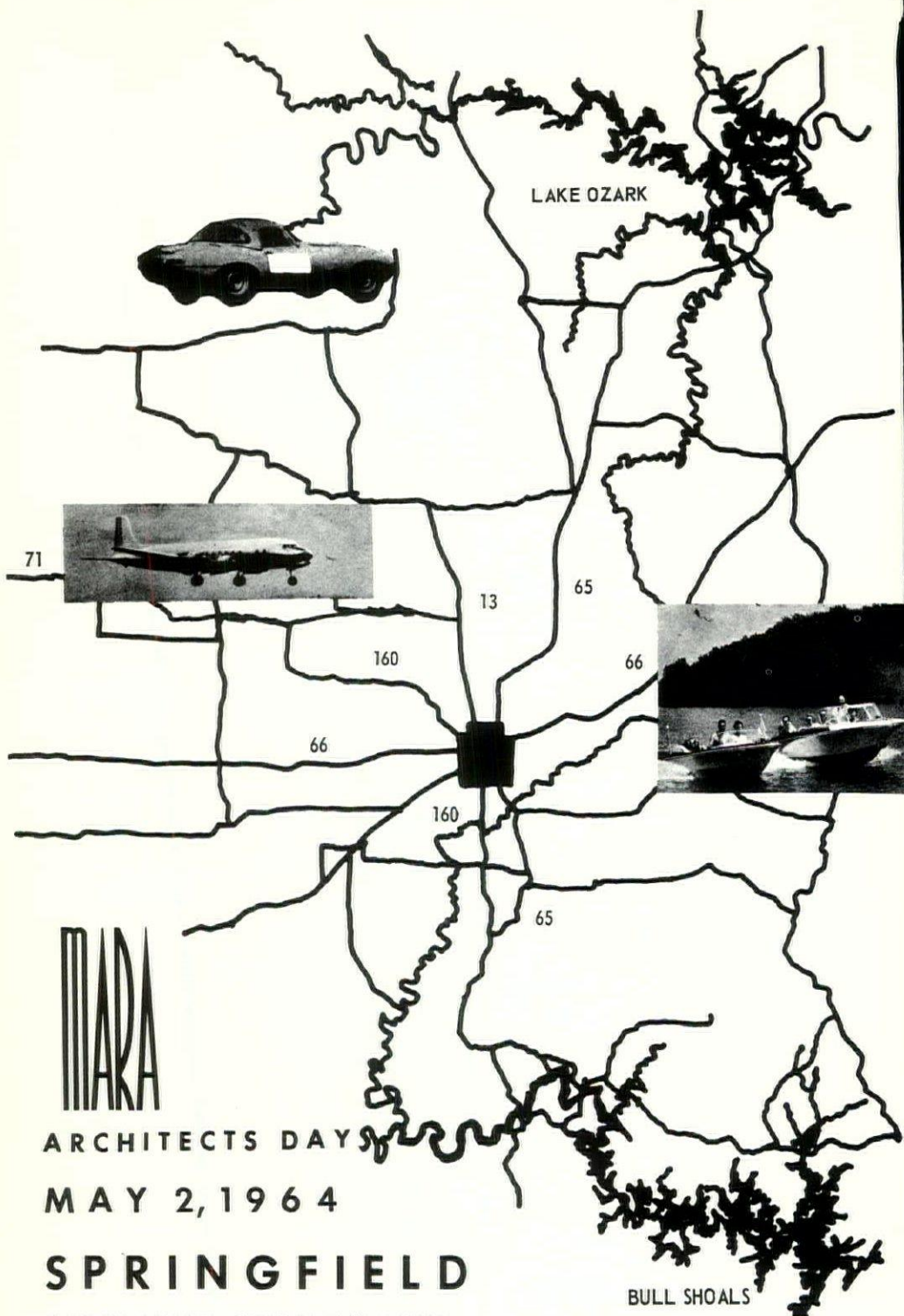
7 (1) To purchase, receive, lease, or otherwise acquire,
8 own, hold, improve, use and otherwise deal in and with,
9 real or personal property, or any interest therein, wherever
10 situated;

11 (2) To purchase, receive, or otherwise acquire, own, hold,
12 vote, use, employ, sell, mortgage, lend, pledge, or otherwise
13 dispose of, and otherwise use and deal in and with, shares or
14 other interests in, or obligations of, other domestic or foreign
15 corporations, associations, partnerships or individuals, insur-
16 ance or annuities in any form, or direct or indirect obligations
17 of the United States or of any other government, state, terri-
18 tory, governmental district or municipality or of any instru-
19 mentality thereof;

20 (3) To pay pensions and establish pension plans, profit-
21 sharing plans, stock bonus plans, stock option plans and other
22 incentive plans for any or all of its directors, officers and
23 employees.

24 2. A professional corporation shall have the powers
25 granted by chapter 351.

**THIS IS A LENGTHY BILL CONTAINING TWENTY ONE SECTIONS.
ONLY FIVE SECTIONS ARE PRINTED IN THIS ISSUE.**



ARCHITECTS DAYS

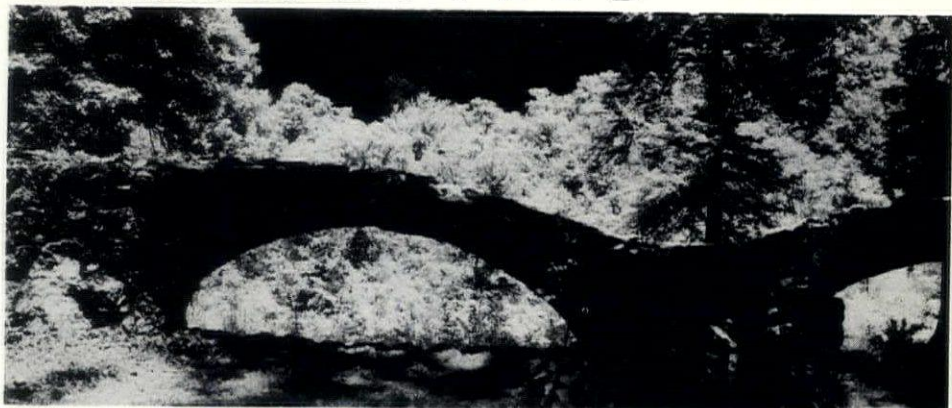
MAY 2, 1964

SPRINGFIELD

MARK YOUR CALENDAR NOW

ARCHITECTS DAY MAY 2, 1964

SPRINGFIELD



MISSOURI ARCHITECTS ATTENDING 1964 ARCHITECT'S DAY SHOULD PLAN TO SPEND THE REST OF THE WEEKEND IN OZARK COUNTRY OF MISSOURI, UNSURPASSED IN BEAUTY ANYWHERE IN THE WORLD. PHOTO- MASSIE.

The Convention Committee of the Missouri Association of Registered Architects met on September 20, 1963 to begin their planning for the 1964 ARCHITECTS' DAY to be held in Springfield, Missouri on May 1 and 2, 1964.

Members of the committee appointed by President Richard P. Stahl are Architects John M. Taylor, Ed Waters, Paul Rich, and Professor Edgar Albin, Chairman of the Fine Arts Department of Southwest Missouri State College.

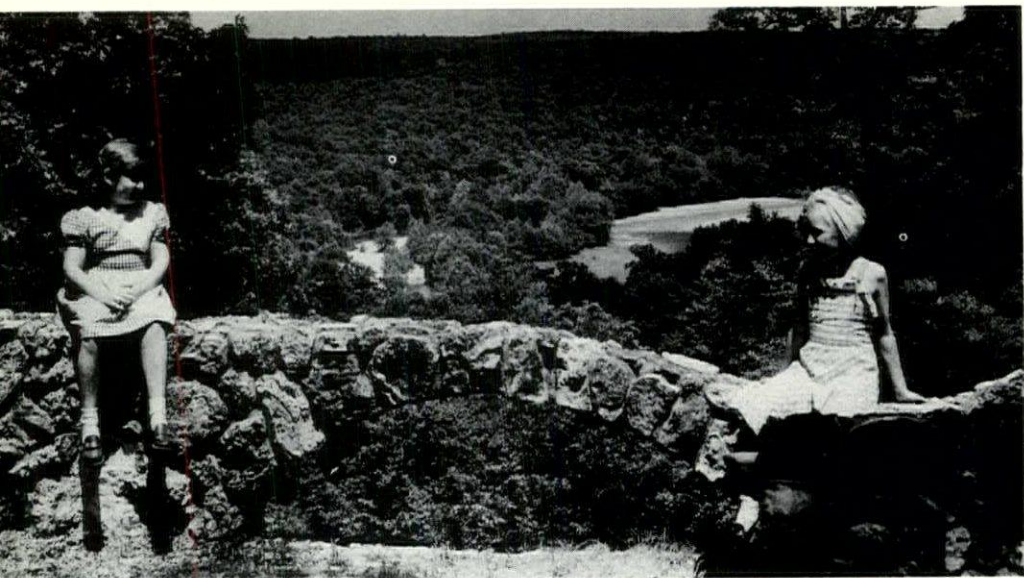
There was a general discussion of the program, which would include special activities for the wives and a President's reception to be held on Friday evening, May 1st, at which past presidents of the MARA would be recognized.

John M. Taylor, Chairman

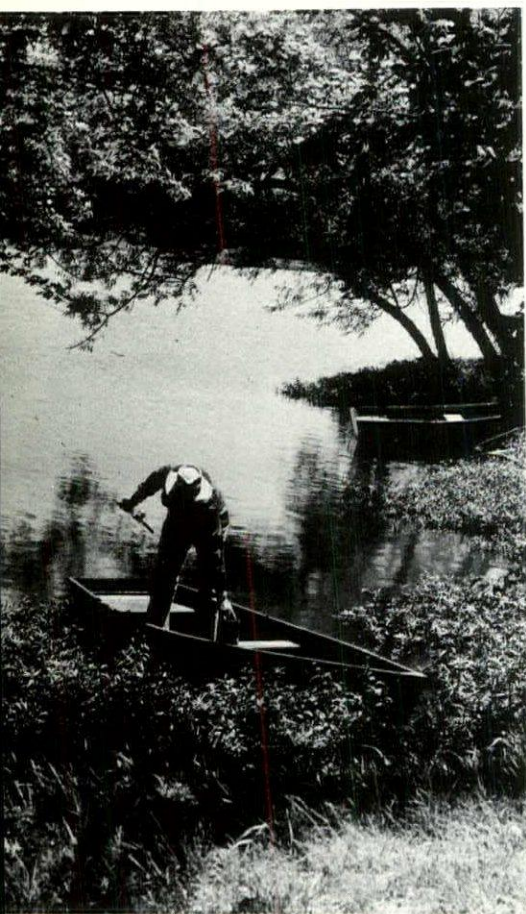
Architecture means three-dimensional creations for both the physical and emotional needs of man – Alfred Roth

Method is more important than knowledge only – Walter Gropius

Quality once was rarity--in an industrialized age, however, quality is no longer aristocratic, and "Beauty" is now on two fronts in battle: with the monster of monotony, and all the novelties of salesmanship – Richard Neutra



Architects' Day, 1964, should be family day at Springfield, the heart of beautiful Missouri Ozarks.
Photo - Massie.



Architects' Day at Springfield next year could well be a fisherman holiday. Several major fishing lakes are located near the site of our annual meeting, May 1-2, 1964, Kentwood Arms Hotel, Springfield.
Photo - Massie.



Blumcraft
OF PITTSBURGH

NEW

classic tapered aluminum post 149-S. Sculptured pattern shown. Available with a plain surface or inlaid natural wood.

Complete catalogue of railings and grilles available upon request.

Permanent display - Architects Building, 101 Park Ave., New York, N.Y.

©1963 BY BLUMCRAFT OF PITTSBURGH, 460 MELWOOD STREET, PITTSBURGH 13, PENNSYLVANIA

REPORT ON ARCHITECTURAL EDUCATION

The purposes of MARA as printed in the MISSOURI ARCHITECT are rather broad and concerned about architectural activity in Missouri. One common characteristic of MARA members is that they are registered in Missouri although members reside in as many as 26 states.

The broad aspects of architecture make the measurement of creative ability a real challenge as related to registration. Requirements that would permit the architect of the poorest creative ability to be registered and not permit the architect of the most creative ability to be registered, would seem possible and yet a wrong direction.

There evidently is a wide range of preparation to meet the requirements for registration in Missouri. The present trend in education would indicate that some architects will have eight years of university schooling and three years experience in an architect's office. Others who become registered will apparently have no academic schooling or experience in an architect's office. Architectural registration in Missouri is apparently possible without any apprenticeship in a professional architectural school or working under the direction of an architect. This is a rather unique situation compared to other professions such as medicine and law.

Information on the coordination of schooling, apprenticeship and acceptable experience for registration should be more clearly identifiable. The present trend in the preparation for the lawful practice of architecture in regard to education and experience is in contrast to other professions in that the architect who attends school and then works in an architect's office may be penalized.

He may eventually spend a minimum of eleven years in school and apprenticing in an architect's office before being eligible to take a written examination.

MARA is now engaged in improving architectural legislation, encouraging architectural students and creating another school of architecture in Missouri. A reciprocal student exchange program has been developed by MARA and will permit students from the State of Missouri to attend the School of Architecture at the University of Nebraska and the University of Arkansas with the same benefits as the University of Missouri would offer if they had a school of architecture. The same arrangement will be possible with other schools.

RECIPROCAL AGREEMENT FOR STUDENT EDUCATION
UNIVERSITY OF MISSOURI AND UNIVERSITY OF NEBRASKA

THE UNIVERSITY OF MISSOURI AND THE UNIVERSITY OF NEBRASKA HAVE ANNOUNCED AN AGREEMENT TO WAIVE OUT-OF-STATE FEES FOR A LIMITED NUMBER OF STUDENTS IN CERTAIN EDUCATION PROGRAMS NOT OFFERED BY THE OTHER INSTITUTION.

UNDER THE AGREEMENT RESIDENTS OF NEBRASKA MAY BE ADMITTED TO THE UNIVERSITY OF MISSOURI PROGRAMS IN FORESTRY, MINING ENGINEERING AND WILDLIFE MANAGEMENT SIMILARLY, QUALIFIED MISSOURI RESIDENTS MAY BE ADMITTED TO THE UNIVERSITY OF NEBRASKA FOR WORK IN ARCHITECTURE, DENTISTRY AND PHARMACY.

We think this exchange program is good however the following is a portion of the letter received by a University of Missouri student who applied for admission to the University of Arkansas under this exchange.

"Because of the increase in the number of students enrolled in architecture at the University of Arkansas it has been necessary to limit enrollment.

University policy favors admitting qualified Arkansas students. For this reason, it has been necessary to limit admission of out-of-state students in architecture to those from states having formal exchange programs with the University of Arkansas. The number of students from any state is limited to the number set up in the exchange program.

The University of Missouri has an arrangement with the University of Arkansas whereby two students are selected each year to be admitted to the architecture program. For information concerning this write to: Dr. C. W. McLane, Admissions Officer, University of Missouri, Columbia, Missouri.

We are very sorry that it has been necessary for us to take this action. We have had a number of very good students from Missouri."

Regard it as just as desirable to build a chicken-house as to build a cathedral. The size of the project means little in art, beyond the money-matter. It is the quality of character that really counts. Character may be large in the little or little in the large. -- Frank Lloyd Wright

N O T I C E

The Missouri Architect is the official journal of the Missouri Association of Registered Architects.

It is mailed to: Registered Architects in Missouri
Consulting Engineers in Missouri
College Libraries in Missouri
Building Commissioners in major Missouri cities
Major High School Libraries in Missouri
Major Building Contractors in Missouri
County Courts in Missouri
Mayors of major cities in Missouri
State Building Officials

Starting with the January issue it will be mailed to all architectural students at Washington University.

ALTON **BRICK**
C O M P A N Y

BETTER FOR LESS WITH BRICK

ST. LOUIS, MO.
Mission 7-5350

ALTON, ILL.
HOward 5-3531



GRANCO OFFERS A COMPLETE LINE OF QUALITY BUILDING PRODUCTS...

FOR FLOORS AND ROOFS...

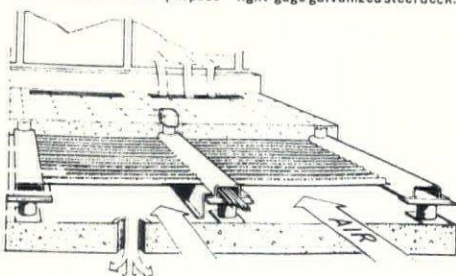
KORRUFORM®—The original permanent steel base for concrete floor and roof slabs.

TUFCOR®—Galvanized tough-temper steel roof deck.

COFAR®—Combined form and reinforcement for concrete.

ROOF DECK—Enamel-finish steel deck for rigid insulation, built-up roof construction.

UTILITY DECK—Multi-purpose—light-gage galvanized steel deck.



NEW A-E (Air-Electric) FLOOR—A floor system that provides a means for under-floor distribution of conditioned air and electrical services.

FOR HIGHWAYS...

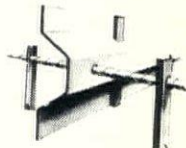
**FUL-FLO®
SUBDRAIN PIPE**



**S.I.P. (Stay-In-Place)
BRIDGE FORMS®**



PAVEMENT JOINTS



FOR INDUSTRIAL BUILDINGS...

Granco Vin-Cor, a new vinyl-protected corrugated steel, offers two-way protection against corrosive atmospheres. Available in a variety of colors and patterns.

GRANCO STEEL PRODUCTS COMPANY

6506 N. Broadway, St. Louis 15, Missouri
Subsidiary of Granite City Steel Company

Our catalogs are filed in Sweet's. Distributors in more than 100 principal cities



What a man does—that he has. You may find other things on him but they are not his..." —Frank Lloyd Wright

Knowledge may be gained from books; but the love of knowledge is transmitted only by personal contact —Henry Van Dyke.

Much have I learned from my teachers, even more from my colleagues, but most from my pupils — Rabbi Judah.

There is hardly anything in the world that some men cannot make a little worse and sell a little cheaper. The people who consider price only are this man's lawful prey —John Ruskin.

CHASSAING LIGHTING, INC.

7603 FORSYTH BLVD • CLAYTON 5, MISSOURI • PHONE PARKVIEW 5-8888

BROOKS CHASSAING

REPRESENTING:

R. A. MANNING CO. INC.
SHEBOYGAN, WISC.

THE EDWIN F. GUTH CO.
ST. LOUIS, MISSOURI

RENDERINGS

COLOR

BLACK & WHITE

JAMES B. FISHER, JR.

2 GRAYBRIDGE LANE • ST. LOUIS 24, MO. • WY. 3-9460

The problem of design acceptance is basic for human evolution and foreign to evolution in nature. Nevertheless, natural laws do govern what minds can assimilate; there is no use lamenting these laws but much use learning about them — Richard Neutra

Knowledge may be gained from books; but the love of knowledge is transmitted only by personal contact — Henry VanDyke

THERE IS A DIFFERENCE in ALUMINUM DOORS You'll Believe It When You See

Desco

QUALITY - APPEARANCE - STRENGTH
RECORD OF DEPENDIBILITY

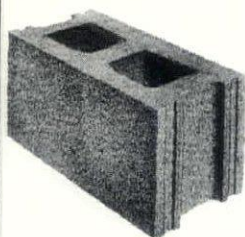
FOR THE COMPLETE DESCO-STORY SEE

THOMAS J. FINAN CO., INC.
12409 ST. CHARLES ROAD
ST. LOUIS, MISSOURI

EDELMAN LYON CO.
325 WEST 80TH. STREET
KANSAS CITY, MO.

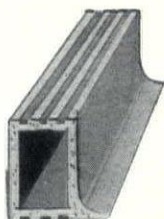
CARTER-WATERS

a single source for
quality masonry materials



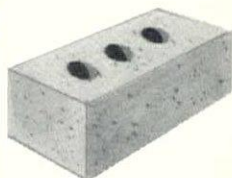
HAYDITE BLOCK

The original light-weight concrete block.



GLAZED TILE

—precision quality
ROBCO and EL-
GIN-BUTLER tile
surpasses ASTM
and FTI dimen-
sional tolerances.



BRICK

We represent more
than 30 producers
from Pennsylvania
to Colorado—man-
ufacturing brick of
all kinds.

Carter-Waters prides itself on its experienced personnel, as well as on the high quality products it handles. These specialists can provide you with technical data, samples, literature and specification information.

Delivery scheduling is given careful attention to avoid delays, and to prevent unnecessary jobsite storage and possible damage.

We urge you to call Carter-Waters on your next job.



BLOK-MESH wire reinforcing for masonry walls

BLOK-JOINT rubber control joint for masonry walls

BLOK-SEAL cement base paint

HYDRAULIC PRESS BRICK COMPANY

St. Louis, Missouri

Hy-tex

The Standard of Quality in Brick

MA. 1-9306

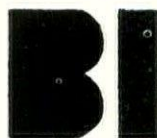
FACE BRICK

HAYDITE AGGREGATE

BUSINESS INTERIORS, INC.

1000 WASHINGTON AVENUE

CEntral 1-6585



SAINT LOUIS

distributors for

knoll • herman miller • dux • b. l. marble • all steel equipment

furnishers of contract interiors

space planning • food service engineering • interior specifying

VSONA MFG. CO.

3512-26 CHOUTEAU AVENUE

ST. LOUIS 3, MO.

MANUFACTURERS OF

BRONZE
ALUMINUM
IRON
WIRE WORK
STAINLESS STEEL
FLAG POLES



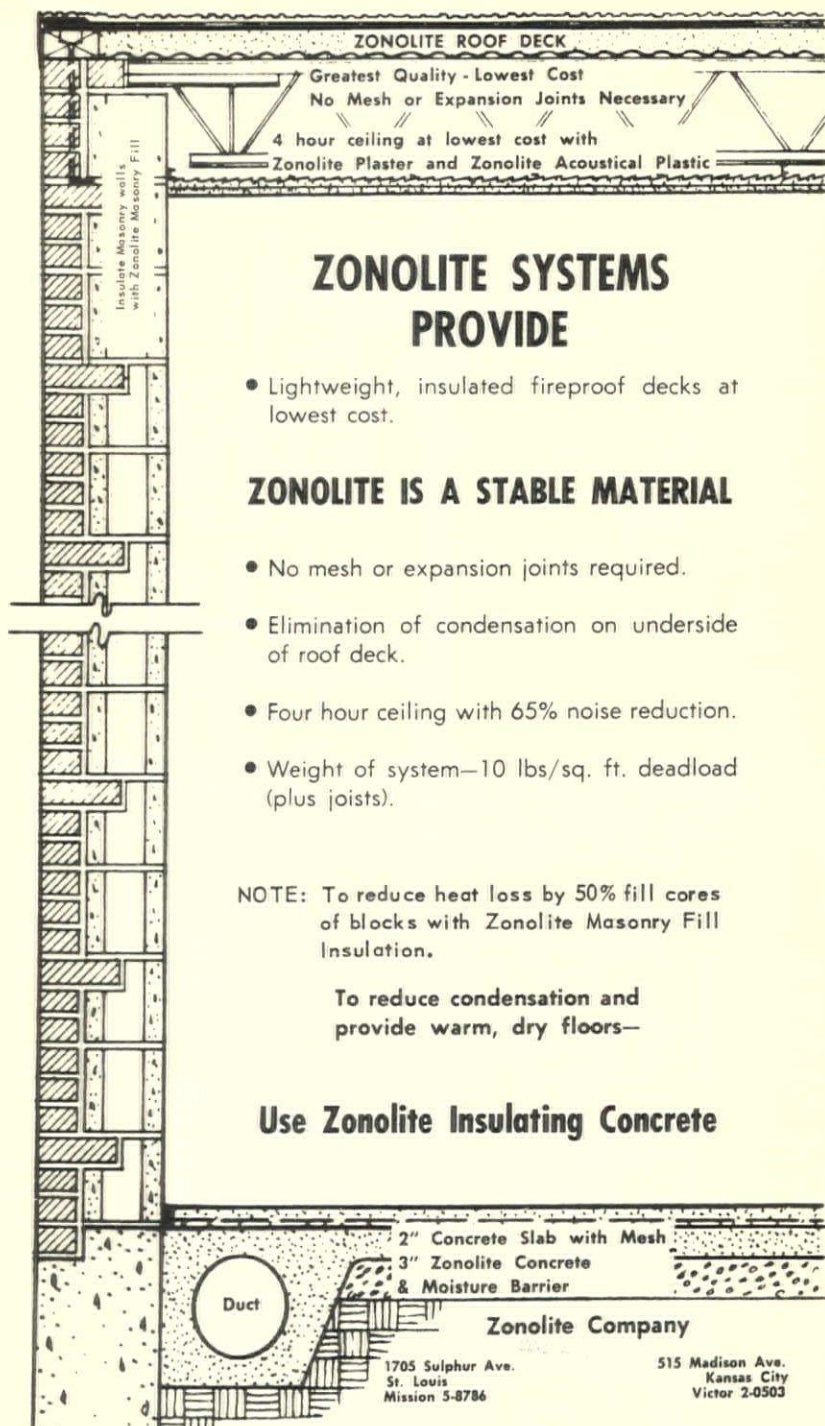
FOUNDRY
PLATING
CADMIUM
ALUMILITING
NICKEL
CHROME

PLAQUES — TABLETS
ARCHITECTURAL METALS

FOR REFERENCE SEE NATIONAL ASSOCIATION HANDBOOK

PHONE MO. 4-8000





ZONOLITE SYSTEMS PROVIDE

- Lightweight, insulated fireproof decks at lowest cost.

ZONOLITE IS A STABLE MATERIAL

- No mesh or expansion joints required.
- Elimination of condensation on underside of roof deck.
- Four hour ceiling with 65% noise reduction.
- Weight of system—10 lbs/sq. ft. deadload (plus joists).

NOTE: To reduce heat loss by 50% fill cores of blocks with Zonolite Masonry Fill Insulation.

To reduce condensation and
provide warm, dry floors—

Use Zonolite Insulating Concrete

2" Concrete Slab with Mesh
3" Zonolite Concrete
& Moisture Barrier

Zonolite Company

1705 Sulphur Ave.
St. Louis
Mission 5-8786

515 Madison Ave.
Kansas City
Victor 2-0503

MISSOURI
ASSOCIATION
OF REGISTERED
ARCHITECTS

4

MISSOURI
ASSOCIATION
OF REGISTERED
ARCHITECTS

MISSOURI
ASSOCIATION
OF REGISTERED
ARCHITECTS

MISSOURI
ASSOCIATION
OF REGISTERED
ARCHITECTS

6