

\$2.50
THE MAGAZINE OF
THE MICHIGAN SOCIETY
OF ARCHITECTS

place

SUMMER 1996



PLACE
553 East Jefferson
Detroit, MI 48226

BULK RATE
U.S. POSTAGE
PAID
PERMIT NO. 941
BALTO., MD

The Secret of Getting Your Building Costs Down...

When you need a bid on a Mechanical Air Handling, Ventilating, or Air Conditioning System, go directly to the source that can give you the most competitive price and service – your SMACNA Air Handling Contractor.

With a SMACNA CONTRACTOR, you eliminate the third party markups and deal directly with those experienced, educated and capable of producing and installing an air handling system.

Separate Air Handling Bids

- SMACNA CONTRACTORS customize the air handling system for your specific requirements.
- SMACNA CONTRACTORS provide shop drawings so other mechanical trades can properly install their work.
- SMACNA CONTRACTORS coordinate the assignment of other mechanical services without jeopardizing your control over separate bids.
- SMACNA CONTRACTORS are leaders in the field, continuously researching for better and more efficient ways to offer Mechanical Air Handling services.

SMACNA CONTRACTORS believe it is our responsibility to give our customers our most competitive price, performance, quality and efficiency. If that's what you need, give us a call.



3221 W. Big Beaver Rd.
Suite 305
Troy, MI 48084-2896
(313) 649-5450
Fax 649-2024

It's time we utilized the utmost cooperation in developing efficient building costs.

c o n t e n t s



SUMMER 1996

3

Forum
Sense and Sensibility

4

Solutions
Documenting Michigan's Architecture

6

Compass Points
Sailing Home

10

Biological Living
Sustainability in Traverse City

14

Vernacular Tradition
Reflecting Michigan Farmhouses

18

Tradition and Transparency
Revealing Views

20

Resourceful Living
Adapting a Mill and Making a Home

24

Landmarks

About the Cover

Geometric, the compass points of this Commerce Township residence are magnetized by the lake view and the owners' love of the sea.
Photography by Balthazar Korab

It's not just piping, it's a work of Art!

LOCATIONS IN:

Detroit
220 Victor Ave.
Highland Park, MI 48203
313/868-2400
313/868-0011 Fax

Saginaw
2430 Midland Rd.
Saginaw, MI 48603
517/799-1230
517/799-6052 Fax

Ann Arbor
2453 S. Industrial Hwy.
Ann Arbor, MI 48104
313/747-8820
313/747-6788 Fax

Lansing
7619 Northport Dr.
Lansing, MI 48917
517/322-4036
517/322-9030 Fax

Tennessee
One Timco Drive
Columbia, TN 38401
615/381-8004
615/380-8993 Fax

Green

John E. Green Company
Mechanical Contractor

"An Equal Opportunity Employer"

place

EDITORIAL COMMITTEE AND STAFF

Editor

Timothy Casai, AIA

Committee

Dane Johnson, AIA

Celeste Novak, AIA

Lincoln Poley, AIA

James Shane, AIA

Mike Simpson, AIA

Executive Director

Rae Dumke, Hon. AIA

Business Manager

Cathy Mosley



ADVERTISING SALES

Dawson Publications, Inc.

2236 Greenspring Drive

Timonium, MD 21093

410/560-5600 800/322-3448

Fax: 410/560-5601



AIA Michigan

553 East Jefferson

Detroit, MI 48226

313/965-4100

Published By

Dawson Publications, Inc.

2236 Greenspring Drive

Timonium, MD 21093

410/560-5600 800/322-3448

Fax: 410/560-5601



AIA MICHIGAN BOARD OF DIRECTORS

President

Tom Mathison, AIA

Vice President

Arthur Smith, AIA

Secretary

Park Smith, AIA

Treasurer

Gary Skog, AIA

Past President

Graham Dickens, AIA

Regional Director

Carl Roehling, AIA

Directors

Alan Cobb, AIA

Harold VanDine, FAIA

Benedetto Tiseo, AIA

Robert Ziegelman, FAIA

Harry Terpstra, AIA

Frank Gorman, AIA

Marc Rueter, AIA

James Meneghini, AIA

Barry Wood, AIA

Bob Stow, AIA

Douglas W. Kueffner, AIA

Randy Case, AIA

Dave Kimble, AIA

Mark Blomquist, AIA

Associate Director

Denise Hopkins, Associate AIA

Staff

Cathy Mosley, Business Manager

Evelyn Giordano, Asst. Financial Mgr.

Evelyn Dougherty, Recep./Info. Sys. Mgr.



PLACE, USSN 1062-86571

553 East Jefferson, Detroit MI 48226. Editor: Timothy Casai.
Please address all letters and inquiries to the above address in
care of Rae Dumke.

CORIAN[®]

is...

A great material for...

Work surfaces

Signage

Columns

Lighting

Serving counters

Furniture

Windowsills

Wall cladding

LONG-TERM VALUE

THERMOFORMABLE

TRANSLUCENT

EASY TO CLEAN

COMPATIBLE

VERSATILE

INVITING TO THE TOUCH

DURABLE

Explore the possibilities...

call **1-800-4-CORIAN**

2 6 7 4 2 6

CORIAN[®]
SURFACES
Created For Life.™



Distributed by Victor S. Barnes Co., Grand Rapids, Mich.

FORUM

SENSE AND SENSIBILITY

You watch the rain from a window which in the winter frames a snowscape. Later, since this is Michigan, sunlight floods the center of the living room. Your garden, fragrant and profuse surrounds you as you read. You eat in your kitchen, and your friends and family share conversation and collaborate with that tossed salad. You are surrounded by your personal sensibilities for living well in your community, with your family and the environment. You hired an architect.

PLACE wants to share five dreams with you. These houses are metaphors for living. They contain private symbols of land and sea; environmental skins for energy efficient breathing; contextual images of a surrounding community; and history in a new context. These homes all have in common the dreams of individuals who allowed

architects to transform their everyday perceptions.

They knew that it makes a lot of sense to hire an architect. A recent article from "The Wall Street Journal" suggests that good design by an architect who is well known in their region can add a 10% premium to your home. Architects pay attention to the details of siting, energy efficient design and quality construction, and they provide savings in operational and maintenance costs.

Beyond sense, your home is a reflection of yourself and an opportunity to create your personal environment. These signature homes are only a few examples by Michigan architects who are partners with their clients. These collaborations speak to the texture of homes, the sense and sensibilities of our daily lives beyond the use of the spaces we usually take for granted. ▼

Place Magazine Editorial Schedule 1996

Editorial Materials Must Be
Submitted to AIA Michigan By:

Fall '96 **Aug. 8, 1996**
Places to Worship
Religious Architecture

Winter '96 **1996**
AIA Michigan Membership
Directory *Placemaker* and
AIA Michigan Awards

For editorial consideration, materials must be received at AIA Michigan, 553 East Jefferson, Detroit, MI 48226, by the above dates.

If you are interested in *Place Magazine* contact: Dawson Publications, Inc., 2236 Greenspring Drive, Timonium, MD 21093. Phone 410/560-5600, 800-322-3448. Fax 410/560-5601.

The Michigan Committee for the Preservation of Architectural Records (MICH COPAR)

Cleaning the attic, you find a roll of architectural drawings documenting its design by a well known architect. You are an architect and your files include job site photos, journal records and sketches of major construction projects. You live and work in an historic building and want to know what the original lobby looked like as you renovate to repair water damage. You are interested in preserving and learning about Michigan's historic, built environment. The Michigan Committee for the Preservation of Architectural Records wants to talk to each of you.

MICH COPAR is a network of local architectural firms, institutional collections, libraries, archives and historical collections, preservationists and historians.

MICH COPAR is not a repository for architectural materials; it is an organization that exchanges and disseminates information promoting the identification, location, disposition and preservation of architectural records. The focus of the group is:

- **EDUCATION:** MICH COPAR provides workshops and lectures on the preservation and management of architectural records both for historical repositories and for design firms, or civil, business, religious, or privately held design records. MICH COPAR sponsors architectural surveys of design firms using students

from Eastern Michigan University and eventually other Michigan colleges to produce records surveys of Michigan architectural firms, architectural structures, and architectural recorders. Books available on preservation topics include:

1. "Permanent Supports for Architectural Records (MICH COPAR, 1997).
2. "Records in Architectural Office: Suggestions for the Organization, Storage and Conservation of Architectural Office Archives (MASS COPAR, 3rd ed., 1992) Acid free testing pens are also available.
3. "Architectural Records Appraisal: Problems and Strategies (Michigan Historical Center, 1995)

- **INFORMATION CLEARINGHOUSE:** Members share information about architectural records. They are maintaining a compilation of "Significant Records for Michigan Architectural History." MICH COPAR also helps to find permanent homes for collections of design materials through its members network.
- **ADVOCACY:** MICH COPAR focuses on the need to preserve the documentary record whatever the format: drawings, CAD, specifications, plans, project files, photographs, firm archives, correspondence, slides

and to foster archival access. Collaboration with other history groups focuses on the need to preserve architectural records for our cultural heritage. Lectures and programs on design are available to the general public.

- **CONSULTING:** Members of MICH COPAR are specialists in their field and can offer evaluations of collections and suggestions for preservation and maintenance.

MICH COPAR is working towards becoming a non-profit, tax-exempt organization registered with the Internal Revenue Service and the State of Michigan. If you are interested in the publications or activities and wish to be included on the mailing list, please write to P.O. Box 1229, Midland, MI 48641-1229.

MICH COPAR SURVEY STATUS:

Over the course of the last two years, EMU students have surveyed ten repositories of architectural records. Dr. Ted J. Ligibel led students in two "Preservation Research Techniques" courses to inventory the architectural holdings of such practitioners as Giffels and Associates, Yamasaki and Associates

Harley\Ellington\Pierce\Yee, Smith Hinchman & Grylls, as well as the archives of AIA Michigan. The photographic holdings of world renowned architectural photographer Balthazar Korab, and the lost records of Detroit construction firm Hyde & Babbio and of Detroit architect George Mason (partial) were researched and recorded. Public records that have been surveyed include those at EMU's Physical Plant and at Wayne County's Engineering, Parks and Service Departments.

A standardized form that allows students to survey records in a minimal amount of time, even in one day has been designed for the project, allowing for maximization of time needed to conduct an inventory. EMU's Historic Preservation Program hopes to extend the records survey throughout the state including Upper Peninsula, through the involvement of regional university students and faculty.

For more information about the records survey contact: Ted J. Ligibel, Historic Preservation Program, 233 Strong Hall, EMU, Ypsilanti, MI 48197; (313) 487-0232. ▼

To get more information
about **ArchiCAD** please
call your local dealer

MAKE BETTER ARCHITECTURE!

ArchiCAD®



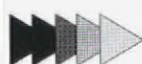
AutoCAD DWG.



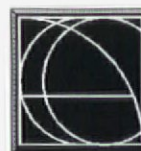
by **MacUser** magazine,
and 'the best CADD software'
for 5 years in a row by **CADD in the Small Firm.**

Available for **Windows, Macintosh & Power Mac**

GRAPHISOFT



ARCHITECTURAL
CADD
CONCEPTS



technical solutions for design professionals

- **ArchiCAD**
- **HP Plotters**
- **Networking**
- **Macintosh**
- **PC Computers**
- **Windows • 95 • NT**
- **Modeling Services**

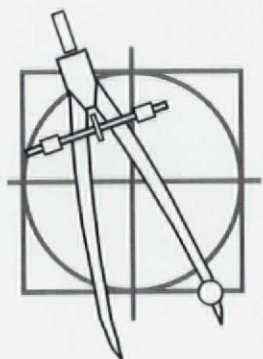
Serving

All of Michigan

For Further Information On Seminars & Services

810-543-1149

fax: 810-543-0106



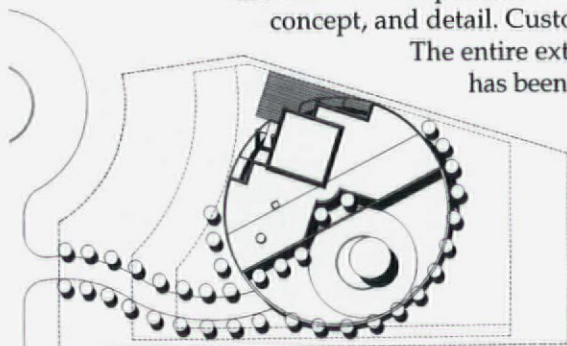
Sailing Home

Located in a lake "view corridor" the "Round House" was designed to develop a constant awareness and relationship to the lake. The pure geometric forms establish a defined object; a sailing ship in the compass points of the landscape. The interior spaces are carefully placed to point towards the lake and away from the motorcourt while providing micro-environments within the home.

Upon entering the residence, visitors are drawn to the spectacular view of the lake. The semicircular floor plan is subdivided and organized into functional zones. All private and service areas have 8'-3" ceilings while the "public" greatroom with its 14'-0" ceiling height frames the entertainment area. The greatroom is defined by a perfect square within the circular geometry of the house. It metaphorically rises above its circular base and becomes the prow of this vessel pointing towards the water.

The owners have a successful custom furniture company and as a result were interested in the use of wood components throughout the house. The design incorporated their objectives in concept, and detail. Custom made cabinets and furniture complement the architectural design.

The entire exterior is clad with vertical tongue and groove redwood siding which has been stained two different colors to reinforce and define the geometry of the design. Walls which describe the circular form have been stained driftwood gray to establish the "solid" nature of the form which is punctured by various window openings. Areas which have been "cut" into the circular form are stained white and are "transparent" surfaces indicative of light, view and the nautical relationship to the lake. The "Round House" defines home as a study in geometry and a sculpture for living with the environment. ▼



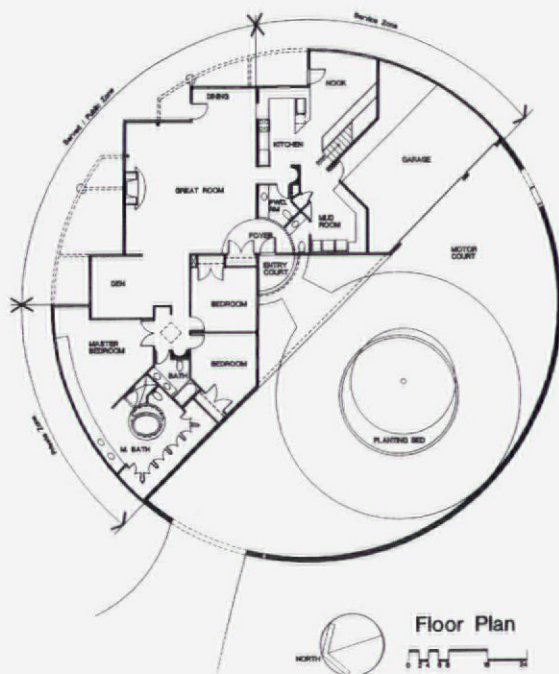
The front entry includes a circular motorcourt, which unifies the entire site into the geometry of the plan.





The central white square is surrounded by circular forms

Project: The Round House
Commerce Township, Michigan
Architects: Arthur F. Smith Architects
Southfield, Michigan
Millwork Contractor: Vogue Furnishings
Contractor: D & J Construction
Photographer: Gary Quesada/KHB

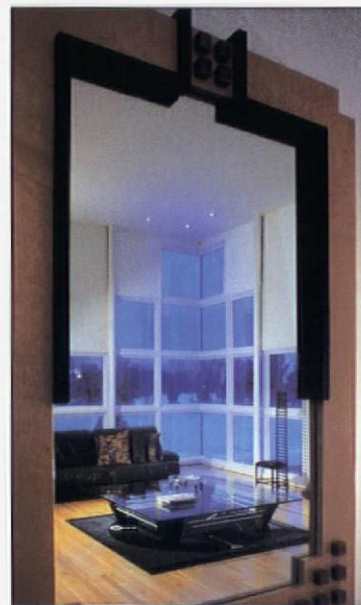


Walls are planes where a built in television, refrigerator or additional cabinets are part of the plan.

Custom cabinets accent the curving private bedroom.



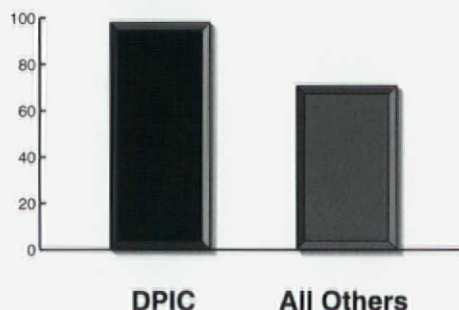
Reflected in the mirror, a 14' high ceiling accentuates the interior great room.



Peer Pleasure.

In a 1995 survey of your peers, 99% said they were pleased with DPIC. Year after year DPIC has scored significantly higher than other providers.

According to the survey, 99% of DPIC insured architects said they were satisfied with their professional liability insurance carrier. With industry-leading loss



Based on 1995 Progressive Architecture Professional Liability Insurance Carriers Awareness Study survey results.

prevention education programs, TeamCover project specific coverage, premium credit opportunities, unparalleled claims service, and a network of independent specialist agents, DPIC lowers the cost of professional liability insurance and increases client satisfaction. Just ask your peers or contact your specialist agent at:



DIFFERENT BY DESIGN FOR TWENTY-FIVE YEARS

The Professional Liability Specialist
of the Orion Capital Companies

info@dpic.com

<http://www.dpic.com>

Professional Concepts Insurance Agency, Inc.

3915 Research Park Drive, Suite A-6

Ann Arbor, MI 48108

PHN 313.662.4041

FAX 313.662.4065

EML pcia@provide.net

LANDSCAPE
ARCHITECTURE
SITE DESIGN



MICHAEL J. DUL
& ASSOCIATES, INC.
212 DAINES STREET
BIRMINGHAM
MICHIGAN 48009
PHO 810 644-3410
FAX 810 644-0819



Jay Desai
Consulting
Engineers, Inc.

7125 Orchard Lake Road
Suite 300
West Bloomfield, MI 48322-3620
(810) 932-2010
Fax (810) 932-3088

Structural & Forensic Engineering
Investigations & Report
Formwork Design, Fabrication & Erection
Studies, Shoring & Bracing Design,
Noise & Vibration Control



ELISE HOSTEN-McGOUGH
& ASSOCIATES, INC.

CONSULTANTS IN CONSTRUCTION & ENGINEERING MANAGEMENT

Project Services

- Planning/Scheduling
- Cost & Resource Analysis
- Progress Evaluations

Dispute Services

- Schedule Impact Analysis
- Litigation Support
- Expert Testimony

*Partnering Facilitation
Dispute Review Board*

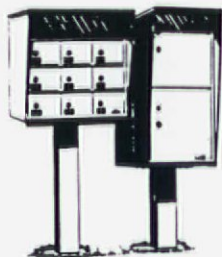
P.O. Box 938
Northville, MI 48167-0938

(810) 380-9140
FAX (810) 380-9141



MAILBOXES
U.S. POSTAL
APPROVED

- NDCBU 8, 12 & 16
- Custom Boxes
- Horizontals • Verticals • Retrofits
- Parcel Lockers
- Mail Lockers
- Mail, Linen, Trash Chutes



ANTONELLI
& ASSOCIATES, INC.
21999 Farmington Road
Farmington Hills, MI 48336
(810) 478-7110 • 1-800-535-1930
FAX (810) 478-7112



D.F.P. INC.

DESIGN
FIXTURING
PRODUCTION

JERRY "J"
9100 ROSELAWN
DETROIT, MI 48204-5903
(313) 933-4455 FAX (313) 933-9046

MANUFACTURERS OF:

- SHELVES
- COUNTERS
- WALL UNITS
- CLOSET SHELVES
- STORE FIXTURES
- K.D. FIXTURES

Preview PRO for Free



*Pro Builder 3D includes three
major modules, one for each
stage of your project...*

1. Footprint Editor

Here, define the outline of a building one floor at a time. Use a variety of techniques, including drawing shapes, selecting from existing home designs, or tracing scanned paper plans. Add windows and doors, interior walls, edit the roof shape, and perform other drawings and editing operation.

2. Residential Building Modeler

This tool creates a model of the planned home based on the footprint you define. Vary surface treatments and colors to help the client with key decision-making. You can even place the plan on a scanned photo of the client's lot to show the building in its real surroundings.

3. Residential Building Drafter

In this module, you can create and edit CAD plans using 2D and 3D drawing tools. Use this as a traditional architectural CAD program, or enhance existing footprints created in the Footprint Editor with automated dimensioning, annotation, and more!

Call 800-422-3946 today to
receive your FREE Demo Disc and
Landscaping Windows Software.

Special Introductory Sale

Pro Builder 3D plus
all basic modules &
One day Training
Seminar

\$595

Offer expires 9-31-96

FREE

*Demo Disc
FREE CD ROM
of video tutorials
that show you how
Softdesk
Pro Builder 3D
looks and
works.*

FREE

*Landscaping
Windows
software*

A \$100 value



SOFTDESK
The AEC Authority™



**Devtron
Russell, Inc.**

800-422-3946 www.devtron.com.

1345 Monroe N.W. 4724 Lake Leelanau Dr. 301 N. Bowery Ave.
Grand Rapids, MI 49505 Traverse City, MI 49684 Gladwin MI 48624



The seasons are reflected in the color of the siding.

Sustainability in Traverse City

Some couples bring pictures to their architect, this client brought a three ring binder full of principles from the "Institut Fur Baubiologie" founded in Rossenheim, Bavaria. These principles examine the holistic interactions between life forms and the living environment. After a series of discussions with the clients regarding indoor air quality, chemicals in building materials, energy fields, lifestyles and just about everything else related and not related to building a new single family residence, Allegretti Architects embarked on designing a house which would become the owners' third skin.

Materials which Inhale not Exhale

Materials for the house were carefully selected for their organic qualities. Interior finishes were chosen for their lack of toxic chemicals, permeability to vapor and cosmic irradiation, as well as for durability. The house is constructed using solid wood lumber. No glues, other than water based carpenters glue were used to minimize out-gassing of toxic chemicals. Paints that were used throughout the home were specially formulated non-toxic products.

Elemental Engineering:

A hydronic radiant heating system consisting of radiator panels and a tile stove, minimizes

continues

Mounted on a stone plinth,
the house grows from the ground.





Surrounded by woods the house is sited to enhance the environment.

air and dust circulation, eliminates electrostatic charges, and supports natural heat exchange. Throughout the home the mechanical systems are creatively detailed as unique architectural expressions. By using carefully laid out circuits and low voltage switching for lighting, the electrical system was designed to eliminate surfaces with charged ions and electro-magnetic fields.

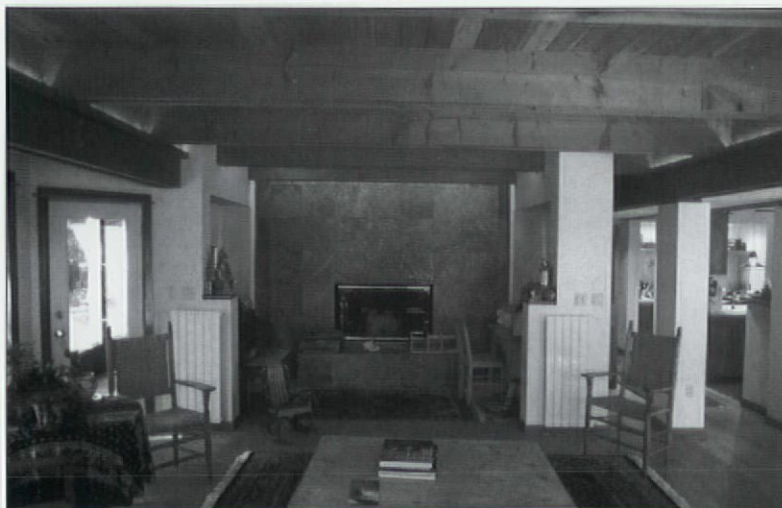
The Land is an Organism

Allegretti approached the site with an intuitive design sense. His goal was "to develop the intrinsic beauty in both the perception of the site as well as the architecture." The use of each room or space was carefully reviewed with regard to views, the need to

vary climatic or spatial environment and the perception of natural space.

Very few trees were cut to build the home. Transitional areas, such as decks and drives were designed to accommodate trees. Those trees that were taken down were milled, dried, and used to make furniture for the home.

The house is described by the land around it. The exterior cladding of red, green and white siding reflect the four seasons of this midwestern climate. From cactus juice finishes to age old construction techniques relying on solid craftsmanship, this home breathes, envisioning a new biology of construction for the 21st century. ▼



Project: Kinney Residence
Hagar Shores, Michigan

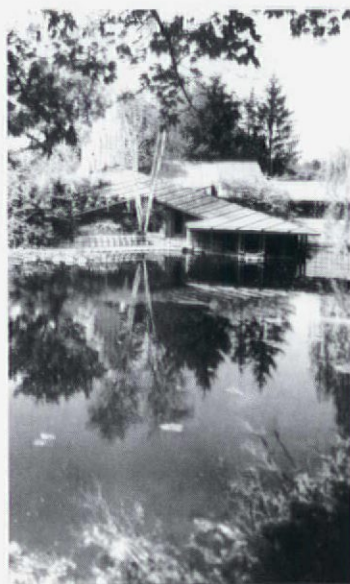
Architects: Allegretti Architects, Inc.
St. Joseph, Michigan

Contractor: Universal Construction
Bridgeman, Michigan

Photography: Arunas Rumsa
Allegretti Architects

The fireplace provides sheltered privacy in the living room which extends into the trees.

**TOUR this
incredible
complex**



**Alden B. Dow.
Home & Studio
a National
Historic Landmark**

at 315 Post Street
in Midland

First Friday & Third
Saturday each month
at 10:00 a.m.

Allow at least one hour

Adults: \$7.50
Students: \$5.00

Reservations required!

**Call
(517) 839-2744**

"BEAUTIFY YOUR WORK WITH BRICK"



BEST BLOCK COMPANY

offers an entire line of architectural
clay brick in an array of colors, styles, and
textures -- turn any project into a showplace!

Our customized concrete masonry architectural units
will meet all of your design needs. The various colors and
shimmering aggregates bring a refined characteristic to all projects.

Add a personal accent to your project include glazed block in your design, watch a
masterpiece unfold!



BEST BLOCK COMPANY

For more information contact
William J. Martin
Vice-President
(810) 772-7000

AIA



THE AMERICAN INSTITUTE OF ARCHITECTS
We make your bottom line beautiful.

Will the new house
you're spending so
much green on today,
become a White
Elephant tomorrow?

1-800-AIA-9930

313-965-4100

An AIA architect can make sure ideas you add today, won't drag down
your price tomorrow. Call for "Make Yourself At Home. 10 Ways An AIA
Architect Can Help Design Custom Solutions To Fit Your Lifestyle." It's free.

VERNACULAR TRADITIONS



Tana Hill Condominiums reflect tradition and comfort in a site which was considered unsuitable for any development.

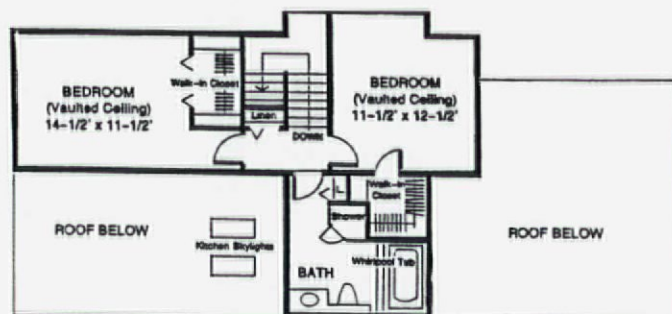
©Glen Calvin Moon

Reflecting Michigan Farmhouses

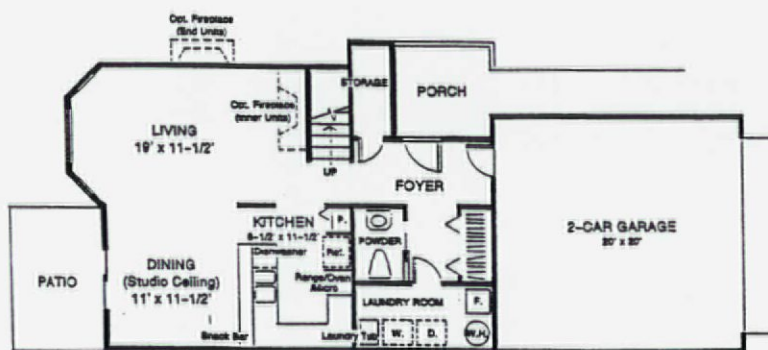
Window bays and porchlike decks, recreate a 19th century tradition.



©Glen Calvin Moon



UPPER LEVEL



MAIN LEVEL

TYPE A - 1380 SQ. FT.



Michigan farmhouses provide the context for the Tana Hill Condominium Project.

A historic, small town cemetery and a small pond frame the site for this vernacular inspired design. A late 19th century downtown and historic community, Farmington's streets are lined with graceful Michigan farmhouses and Victorian Queen Anne homes. The design of this 22 unit condominium complex is derived from the surrounding environment.

Three types of units are staggered to accommodate the best views of the pond. Each unit has a separate identity and many have deck "porches." The units are clustered and embedded in the rolling landscape. The placement on the site retains the character of the environment which is heavily wooded.

The condominiums were designed to respond to the Michigan climate. Energy efficient features include 12" of fiberglass insulation in the roof and 6" in the walls. All glazing is 1" double insulated clear glass. Dual skylights are placed above the centrally located kitchen. Construction is wood frame with white wood siding and green asphalt shingles.

The site planning and civil engineering work with the irregular site contours and trees. Site drainage was designed to preserve and reinforce the wetland pond. This narrow site was considered unusable, a "leftover" space which has been infilled with a gracious reflection of Farmington's historic past. ▼

Project: Tana Hill Condominiums
Farmington, Michigan

Architects: Straub Pettitt Yaste
Troy, Michigan

Mechanical/Electrical Engineer: EAM Engineers, Inc.

Structural Engineer: Robert Darvas Associates

Civil Engineer: Don Swan Associates

Landscape Architect: Beckett and Raeder, Inc.

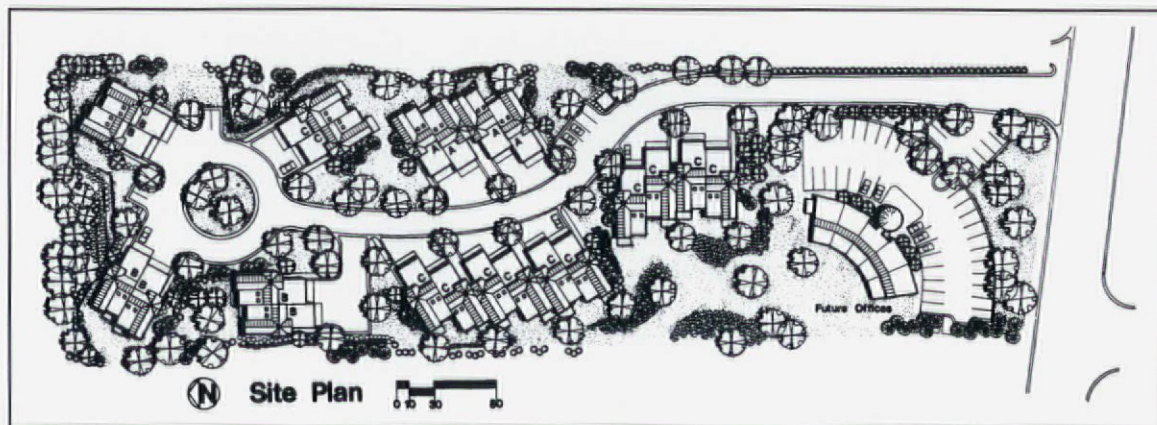
General Contractor: R. B. Stoy & Associates

Photographer: Glen Calvin Moon
Detroit, Michigan



©Glen Calvin Moon

Staggered units create a village atmosphere.

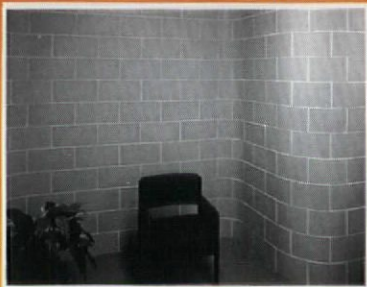


New Creative Interiors



with new "Soft Corners"™ from our Buildings Construction Group

Corners heretofore available only in your mind's eye. Convex/ Concave corners and walls. New Soft Corners™ also facilitates use of "columns" and "wrap-arounds".



Spectra-Glaze® II

FACTORY-GLAZED CONCRETE MASONRY UNITS

©1988, all rights reserved, and ®Reg. U.S. Pat. Off., Canada and other countries by THE BURNS & RUSSELL CO., Box 6063, Baltimore MD 21231, 410/837-0720 800/638-3188 FAX 410/837-9498 TELEX 87-791. Sweet's 04200/BUR.

Innovative Masonry Products Since 1790

sto

E.I.F.S. and
Interior Finishes

The best Exterior Insulation
and Finish Systems.

Architectural coatings
for interior and exterior.

sto·ex inc.

Grand Rapids
800-782-3162



FAUST CORPORATION

SPECIALIZATION

THAT WILL REINFORCE YOUR *DESIGNS*

PILE DRIVING & MARINE SERVICES

p. o. box 36598 -- grosse pointe farms -- michigan -- 48236
telephone (313) 842-3655 -- fax (313) 842-4010

CUMMINS & BARNARD, INC.
CONSULTING ENGINEERS
2058 South State Street • Ann Arbor, MI 48104

MECHANICAL • ELECTRICAL • CIVIL
STRUCTURAL • ENVIRONMENTAL
ECOLOGICAL

SINCE 1932

Phn (313) 761-9130  Fax (313) 761-9881



517-482-9066
FAX 517-482-6732

BOICHOT CONCRETE CORP.

SHANE GRUBER
Sales Manager

1800 Turner St.
Lansing, MI 48906

**A Great Offer from the
#1 Encad Dealer in the U.S.!**

LEASE
FOR ONLY
\$120/month*

ENCAD
CADJET[®] 2



*36 Month F.M.V. Lease

**Best Color/CAD
Inkjet Plotter Value
on the Market!**

- Fast, monochrome plotting... only 5 min. per plot!
- Great for spot-fill color!
- Roll-feed for unattended operation.

A Complete Supplier
of CAD Plotters & Media

Complete with Stand **\$3695**

charrette

Solutions for Design Professionals
NEW ENGLAND • NORTHEAST • MIDWEST

Call Today!

PHONE: 800-367-3729

FAX: 800-626-7889



Fountains Enhance the Aesthetic Appeal of Your Creation

- Wide variety of styles and effects.
- Cleaner, odor free water.
- Requires no special plumbing or electrical.
- Lighting packages for dramatic night effects.
- UL/ETL approved, GFCI included.
- "No show" aeration models available.

CALL for your FREE Otterbine catalog
800-822-2216

Spartan 
Distributors
Auburn Hills, MI • Sparta, MI



Plan On It

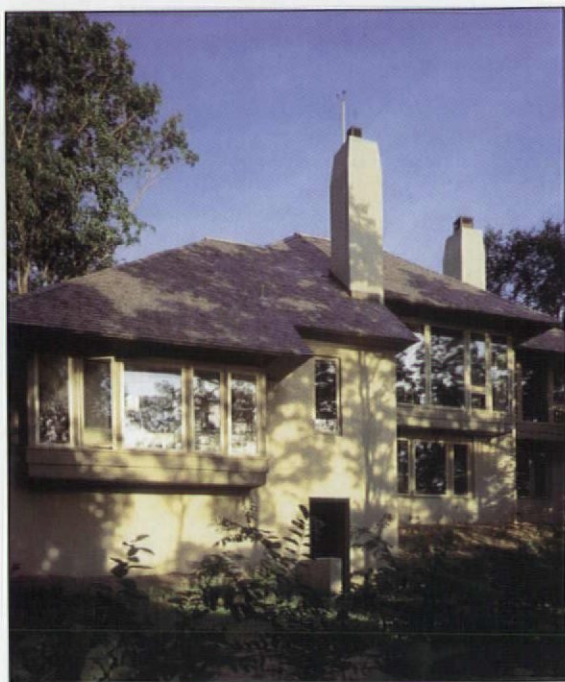
Spartan Distributors - for All Your Irrigation Needs

- ☒ Full Line Irrigation Supplier
Commercial, Golf, Residential
- ☒ I.A. Certified Designers on Staff
- ☒ Competitive Material Quotations
and Specifications
- ☒ Professional Irrigation Contractor and
Independent Consultant Referrals

For more information on our many services, call
800-822-2216

Spartan 
Distributors
Auburn Hills, MI • Sparta, MI



REVEALING VIEWS

The residence rises
with the hillside and
overlooks Lake Michigan

If your first house was designed by the Chicago architectural firm of Holabird and Root, your choice for a new home may be framed by its traditions. The owners of this new modern home on Lake Michigan in Manistee, Michigan, moved here from their large, turn of the century carriage house in town. Their venerable old building in which they had lived for thirty years was upright, inward looking and stately, and these people were looking for a change in their new beach front home.

They had learned a respect for architectural integrity from their old house which guided them through the design process for their new one. Their transition from the relative formality of that historic place of English antiques, paneled rooms, heavy, patterned fabrics and rigid exterior gardens into the transparent, kinetic quality of the new residence couldn't have been more complete. Except for select focal pieces, most of the furniture stayed behind. Walls of glass absorbed the dense vistas of trees, dunes and lake with no need for window covering. The lighting is built-in, indirect and enhances the elements of the natural environment brought into the interior.





Excellence in fine stair detailing



The fireplace is framed by the woods.

The floor plan with living spaces on seven levels creates a varied sequence of dynamic spaces. A bridge discreetly steps down the hill toward the beach beyond. The few solid walls that define interior spaces are stark and white and animated in themselves as they reflect ambient light deep into the rooms.

The impact of the 4,200 square feet of living space to the site is minimal. Trees were saved as raised decks and walkways slide past them, in some places 15 to 20 feet off the ground. The presence of this new residence on the steep wooded hillside is organic. The house is nearly undetectable from the beach nearby. ▼

Project: Manistee Residence

Architects: Architecture/Artistry/
Interiors/Inc.
Traverse City, Michigan

Builder: Structural Specialties
Jim Johnson
Manistee, Michigan

Photography: Dietrich Floeter Photography
Traverse City, Michigan

The highly crafted and carefully lighted kitchen



Adapting a Mill and Making a Home



The historic stone mill on the grounds of the Henry Ford Museum & Greenfield Village.



Private dining overlooking the millrace in a very public space.



Ancient wood beams, restored, and frame the living room.

Imagine leaving behind a roomy, 4,000 sf suburban home, getting rid of 95% of your belongings, and finding happiness in an old 600sf mill in the middle of a living history museum. Sound challenging? That is exactly what happened when the old stone mill was renovated into the new home of the museum's president and spouse.

The mill was built by Henry Ford in 1929. It is a simple two-story, two-room stone building, 13 by 26 feet, with timber roof framing and wood plank floors. While it was dark, damp, and in a state of disrepair, the beautiful natural materials, its charming simplicity, the rippling millrace outside the front door, and a nearby lagoon, made the project worth attempting for the owners.

Design obstacles were overcome in four ways:

- By approaching the project as though designing the interior of a boat - every square inch had to count
- By honoring the building's historic character and its location on museum grounds, requiring the restoration of many materials
- By ensuring that the design reinforced the idea of resourceful living, one of the museum's major themes
- By providing privacy in the middle of a very public place.

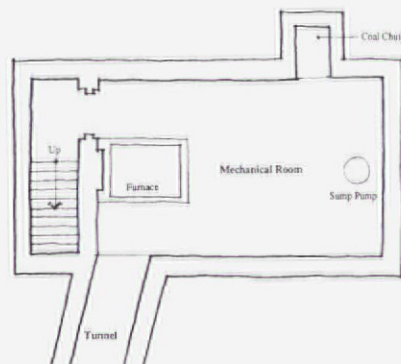
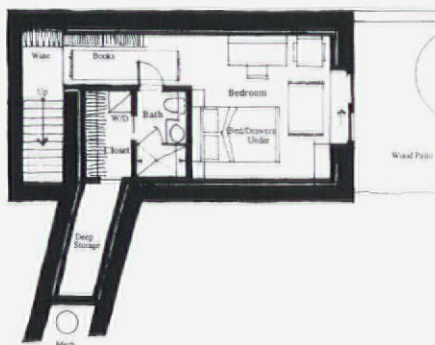
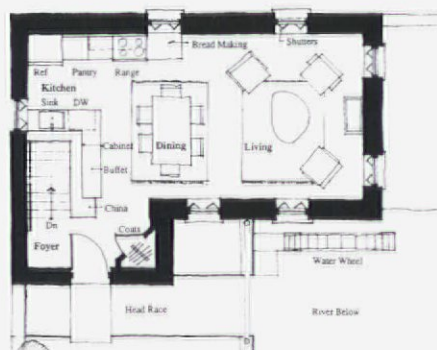
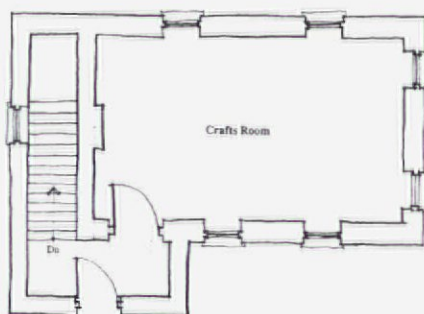
The stone mill was adapted for its new use with the addition of a flagstone patio off the entrance. From this vantage, the owners overlook the millrace, and new evergreen trees provide privacy. A pair of French doors on the lower level provides light, as well as necessary egress, to a quiet outdoor space off the bedroom.

The dark, musty, cramped interior space was transformed into a serene, beautiful, and functional home. The upper, main floor (300 sf) provides living, dining, and kitchen areas, while the lower level (300 sf) contains the bedroom, bathroom and storage.

An interior wall separating the entrance and stairs to the basement from the main floor was removed to increase space and allow more light into the living room. Building a floor over part of the stairwell increased the space available for the kitchen. Extensive use of built-in cabinetry provides storage and keeps clutter from detracting from the simple beauty of the space. The kitchen cabinets and drawers are deep, and three countertop areas provide adequate work space. One area doubles as a desk, another as buffet space for entertaining, which the couple does often. The cabinets are ash, with matte black tops, to contrast with the dark floor and ceiling. Modern appliances combine well with the simple lines and provide space-saving efficiency. The custom ash dining table stores its own leaf. The custom designed bed includes built-in storage beneath. The small closet includes a stacking washer and dryer. Built-in shelves in the hall hold books and wine bottles.

This restored mill is an example of a very resourceful adaptive reuse of a historic structure. The elegance of living with history is provided in this timeless renovation. ▼

Project: Stone Mill Renovations
Owner: Henry Ford Museum & Greenfield Village
Architect: Architects Four, Inc.
Cabinetry Design
Consultant: Arbor Millwork & Design
General Contractor: Michael Gross, Contractor
Photography: Glen Graves Photographics



Perini



Building relationships on trust.

Services:
Construction Management
General Contracting
Design/Build

Perini Building Company
Central U.S. Division
2000 Town Center, Suite 1600
Southfield, MI 48075
(810)352-5800

The oldest and most effective way to protect steel from corrosion is Hot Dip Galvanizing, a method using zinc in molten form to metallurgically change the corrosion properties of the steel. The problem:

Nobody seems to understand anything about Hot Dip Galvanizing.

The Voigt and Schweitzer group of galvanizing facilities in the United States is offering **seminars to architects, engineers and specifiers** in selected states around the country. V & S is affiliated with the AMERICAN GALVANIZERS ASSOCIATION, and is known to be the largest job galvanizer in the world.

If you have a firm in the following listed states they will come to your office, update your information and present a brief seminar on Hot Dip Galvanizing. Ohio, Indiana, Kentucky, West Virginia, Western Pennsylvania, Michigan, Oklahoma, Arkansas, North Texas, Missouri, or Kansas.

Call or write:

Terry Wolfe - VP Sales and Marketing
V & S Galvanizers
1000 Buckeye Park Road
Columbus, OH 43207
Tel: 614-443-4621
Fax: 614-443-6375



Thom Ryan - Operations Manager
V & S Galvanizers, Inc.
12600 Arnold Avenue
Redford, MI 48239
Tel: 313-535-2600
Fax: 313-535-0862

index to advertisers / buyers' guide

AERATORS	
Spartan Distributors	17
ARCHITECTURAL BRICK/BLOCK	
Best Block Co.	13
ARCHITECTURAL COATINGS	
Sto-Ex, Inc.	16
ARCHITECTURAL SUPPLIES & SPECIALTIES	
Charrette	17
ARCHITECTURAL TOUR	
Alden B. Dow Archives	13
BRICK/PAVING BRICK	
Glen-Gery Corp.	23
CAD	
Ketiv Technologies, Inc.	23
CAD SUPPLIES & EQUIPMENT	
Charrette	17
CAD SYSTEMS	
Architectural CADD Concepts	5
CADD	
Deuton Russell Co.	9
CAST IN PLACE CONCRETE	
Boichot Concrete Corp.	17



Robert Darvas Associates, P.C.

COMPLETE STRUCTURAL ENGINEERING SERVICES

- DESIGN CONTRACT DOCUMENTS & CONSTRUCTION INSPECTIONS
- STRUCTURAL DESIGNS IN ALL MATERIALS
- INSPECTIONS & STRUCTURAL SURVEYS
- HISTORICAL RESTORATIONS
- SPECIAL FOUNDATIONS
- EXPERT WITNESS TESTIMONY

440 SOUTH MAIN STREET
(313) 761-8713

ANN ARBOR, MICHIGAN 48104

CLADDING	
Cold Spring Granite Co.	23
COMPUTER APPLICATIONS	
Architectural CADD Concepts	5
COMPUTER SOFTWARE	
Ketiv Technologies, Inc.	23
CONCRETE GENERAL INFORMATION	
Boichot Concrete Corp.	17
CONSTRUCTION MANAGEMENT CONSULTANTS	
Elise Hosten McGough & Assoc.	9
CONSULTANTS - MASONRY	
International Masonry Institute	OBC
CONSULTING ENGINEERS	
Cummings & Barnard Inc.	17
Jay Desai Consulting Engineers	9
Robert Darvas Associates P.C.	22
CORROSION PROTECTIVE COATINGS	
V & S Galvanizers	21
CUSTOM RAILING SYSTEMS	
Don Endres Associates, Inc.	23
DESIGN & PLANNING SOFTWARE	
Ketiv Technologies, Inc.	23
DESIGN PRODUCTION	
DFP, Inc.	9
DISPUTE SERVICES	
Elise Hosten McGough & Assoc.	9
DISTRIBUTOR - BRICK & CONCRETE BLOCK	
Best Block Co.	13
DUPONT CORIAN	
Victor S. Barnes Co.	2
EDUCATION - MASONRY	
International Masonry Institute	OBC
FIRE PROTECTION CONTRACTOR	
John E. Green Co.	2
FIXTURES	
DFP, Inc.	9
FOUNTAINS	
Spartan Distributors	17
GALVANIZING/HOT DIP	
V & S Galvanizers	21
GENERAL CONTRACTORS	
Perini Building Company	21
GLAZED CONCRETE MASONRY UNITS	
The Burns & Russell Co.	16
GRANITE	
Cold Spring Granite Co.	23
HVAC CONTRACTORS	
SMACNA	IFC
INSULATION - EXTERIOR	
Sto-Ex, Inc.	16
INSURANCE	
Professional Concepts Insurance/DPIC	8
IRRIGATION SUPPLIES, CONSULTING, SPECIFICATIONS	
Spartan Distributors	17
LANDSCAPE ARCHITECTURAL CONSULTING	
Michael J. Dul & Associates	9
LANDSCAPE DESIGN	
Michael J. Dul & Associates	9
LAW FIRM	
Federlein & Keranen P.C.	22
MAILBOXES	
Antonelli Associates Inc.	9
MANUFACTURER OF MASONRY UNITS	
Best Block Co.	13
MARINE SERVICES	
Faust Corp.	16
MASONRY	
International Masonry Institute	OBC
MECHANICAL CONTRACTORS	
John E. Green Co.	2
SMACNA	IFC
NATIONAL HISTORIC LANDMARK	
Alden B. Dow Archives	13
PAINT/COATINGS	
V & S Galvanizers	21
PILE DRIVING	
Faust Corp.	16
POOL COPINGS	
Glen-Gery Corp.	23
PROFESSIONAL LIABILITY	
Professional Concepts Insurance/DPIC	8
PROJECT SERVICES - CONSULTANTS	
Elise Hosten McGough & Assoc.	9
REDI MIX CONCRETE	
Boichot Concrete Corp.	17
REVOLVING DOORS	
Don Endres Associates, Inc.	23
SITE DESIGN	
Michael J. Dul & Associates	9
SITING	
Spartan Distributors	17
SPECIAL COATINGS & SURFACINGS	
Sto-Ex, Inc.	16
STONE	
Cold Spring Granite Co.	23
STRUCTURAL ENGINEERS	
Jay Desai Consulting Engineers	9
Robert Darvas Associates P.C.	22
SYKLIGHTS	
Don Endres Associates, Inc.	23
WATER FEATURES	
Spartan Distributors	17
WHOLESALE DISTRIBUTOR - CORIAN	
Victor S. Barnes Co.	2
WINDOWS & DOORS	
Builders Window Specialties	IBC
Lawrence Smith Dist.	IBC
Marvin Windows	IBC
Milliken Millwork Inc.	IBC



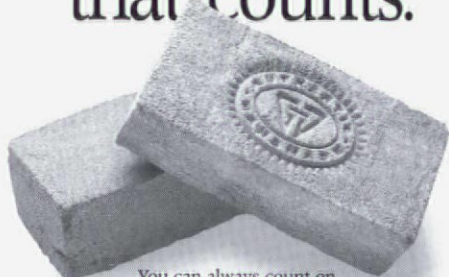
Federlein & Keranen, P.C.

Attorneys specializing in construction claims and litigation, (state and federal), architect/engineer liability, construction bonds and liens, state and federal procurement law, arbitration, mediation, and alternative dispute resolution.

Walter J. Federlein, B.S., Mechanical Engineering, M.B.A., J.D.
Thomas M. Keranen, B.S., M.S., Civil Engineering, P.E., J.D.
Frederick F. Butters, B.S., Architecture, AIA, J.D.
Maria J. Bernard, B.A., J.D.
Peter J. Cavanaugh, J.D.

6895 Telegraph Road
Bloomfield Hills, Michigan 48301-3138
Telephone: (810) 647-9653 • Fax: (810) 647-9683

At Glen-Gery,
it's what's
behind our brick
that counts.



You can always count on
Glen-Gery for the highest quality brick in a rich
variety of colors, textures, shapes and styles. You can count
on Glen-Gery's excellent service. We stand behind every
brick by offering expert advice, technical assistance, and
outstanding customer service.

Next time you're using brick, pick the brick that's more
than just a pretty face. Glen-Gery.



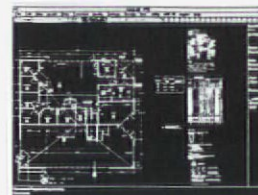
Midwest Regional Sales Office
37720 Hills Tech Drive • Farmington Hills, MI 48335
(810) 489-9338 • Fax: (810) 489-8028

ARCHT

Architectural Software for AutoCAD®

Realize time savings,
increased productivity,
and outstanding value.

- Support your architectural design process.
- Create production drawings and design visualizations.
- Uses industry standard layering formats or create your own.
- ARCHT comes with over 2,100 pre-defined blocks in plan, elevation, and 3D.
- On-line help, manuals and tutorials.



ARCHT enhances AutoCAD with a thoughtful, comprehensive design philosophy based on the components and assemblies of a building. You conceive the idea, then use ARCHT to leverage the production of drawings, models, and documentation.

Autodesk
Registered Application Developer

KETIV CAD Software & Support

6601 NE 78th Court, A-8
Portland, Oregon 97218 USA

800-458-0690

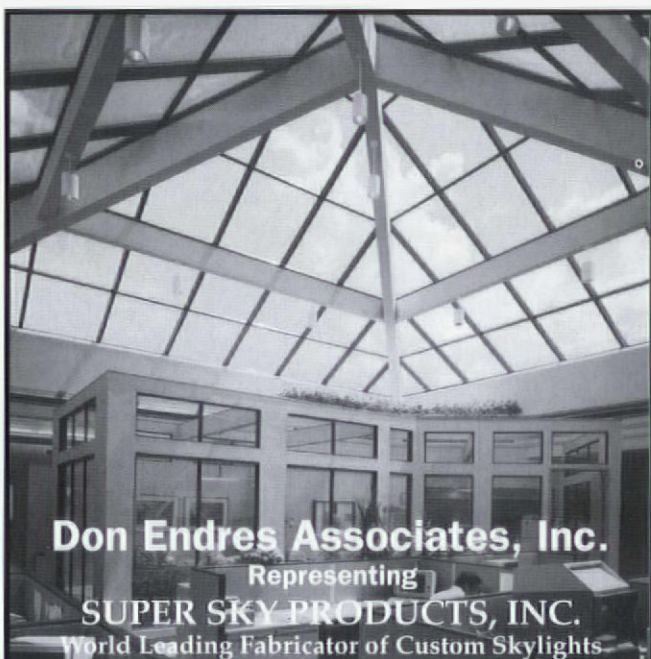
503-252-3230

Fax 503-252-3668

ARCHT and Draw it once! are registered trademarks of KETIV Technologies, Inc., Portland, Oregon, USA. All other product names are trademarks of their respective companies.



DRAW IT ONCE



Don Endres Associates, Inc.
Representing
SUPER SKY PRODUCTS, INC.
World Leading Fabricator of Custom Skylights



(313) 881-3496 • FAX (313) 881-2690
19664 HARPER AVENUE • GROSSE POINTE WOODS, MI 48236

It's No Mystery...



why throughout the world, designers of stone structures can depend on Cold Spring Granite for the finest in granite products and applications — unsurpassed commitment to quality and service from concept to completion.

Cold Spring Granite
202 S. Third Ave.
Cold Spring,
Minnesota 56320
U.S.A.

Your Local Representative is:

CHUCK MUEHLBAUER
phone: 1-800-328-5040 fax: (320) 685-8490

1-800-551-7502
Fax (612) 685-8490

COLD SPRING
Quarries and fabricators of building stone and memorialization products.

l a n d m a r k s

By Balthazar Korab



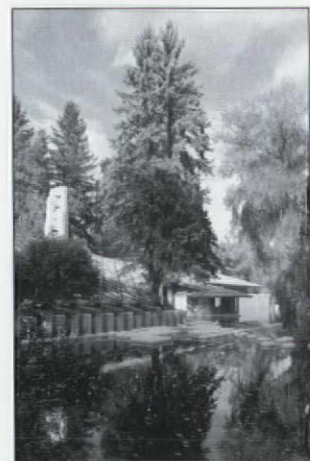
ARCHITECTS DESIGN, NATURE DECIDES.

I am not dealing here about earthquakes, floods or hurricanes, rather I speak about the effects of the unchecked growth of the landscape complimenting our buildings.

The large photograph shows the Afflick house in Bloomfield Hills by Frank Lloyd Wright, taken in 1956. This splendid Usonian house was given to the Lawrence Technical University and kept in excellent condition. As for the landscaping, - if the present condition deserves at all the term, - we can just hope that there will be advise and funds to treat the overgrown surrounding worthy to the building.



A similar case can be cited with a successful outcome: In the Fall 1991 issue of "PLACE" I have featured the Alden Dow house with a 1960 photograph on which a fine clump of birches play a supporting role to this valued landmark. Hardly noticeable are some Colorado spruces which in time grew way out of scale, and out of place suppressing the birches in the process.



This author is proud to report that his campaign, "Death to the Spruce" brought result. The Alden Dow Foundation is now considering the replacement of the lost birches after a quick and painless execution of the formidable spruce.

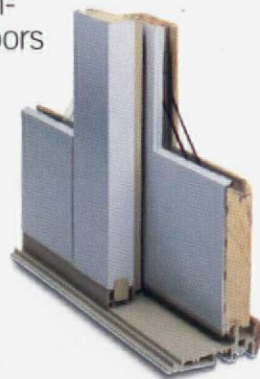


**YOU MAY NOT KNOW
WHAT AAMA 605 IS
BUT YOU'LL BE GLAD WE DO.**

The new Marvin Clad Sliding French Door combines beauty and performance in a highly functional sliding door. Our clad sliding French door features an extruded aluminum, low maintenance exterior. It meets and exceeds the toughest coating specification in the industry, AAMA 605. On the inside you'll be impressed by our wood interior, no nail hole



design, and elegant door handles. And, while all sliding doors slide, no other door slides as smoothly, freely, and as quietly as ours. Visit your local Marvin dealer for a test-slide.



Builders Window Specialties
Jenison, MI • 800-328-0268

Lawrence Smith Distributors
Bay City, MI • 517-684-9811

Milliken Millwork, Inc.
Sterling Heights, MI • 810-264-0950

International Masonry Institute has opened a Michigan area office in Ann Arbor. IMI's new Michigan Area Director of Marketing is Diane Throop, P.E. If you have questions about masonry design and construction, call Diane at (313) 769-1654. There will be no charge for her counsel and assistance. She can also arrange for free in-house seminars. (IMI is an AIA/CES Learning Unit provider offering continuing education credits.)

IMI is a labor/management trust fund of the International Union of Bricklayers and Allied Craftworkers and the Contractors who employ the Union's members in the United States and Canada.

IMI Michigan, P.O. Box 3939, Ann Arbor, MI 48106-3939

Tel: (800) 438-4751

(313) 769-1654

Fax: (313) 668-6571

Building the best in Michigan.

Union Craftworkers and Contractors.



The best hands in the business.

