

ATA

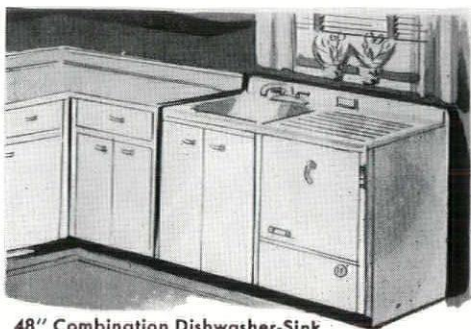
monthly bulletin, michigan society of architects • july 1955 • 30c

including national
architect

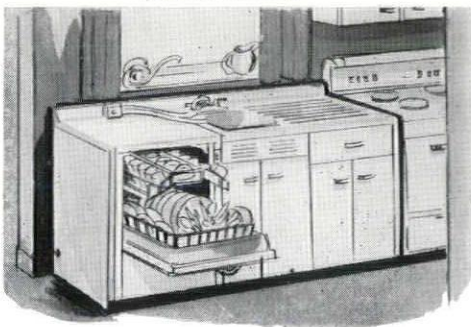
An Everlasting Guarantee of Satisfaction!

KITCHENAID

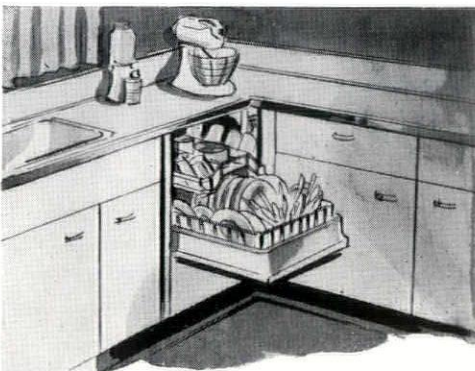
The World's Most-Wanted
AUTOMATIC DISHWASHER



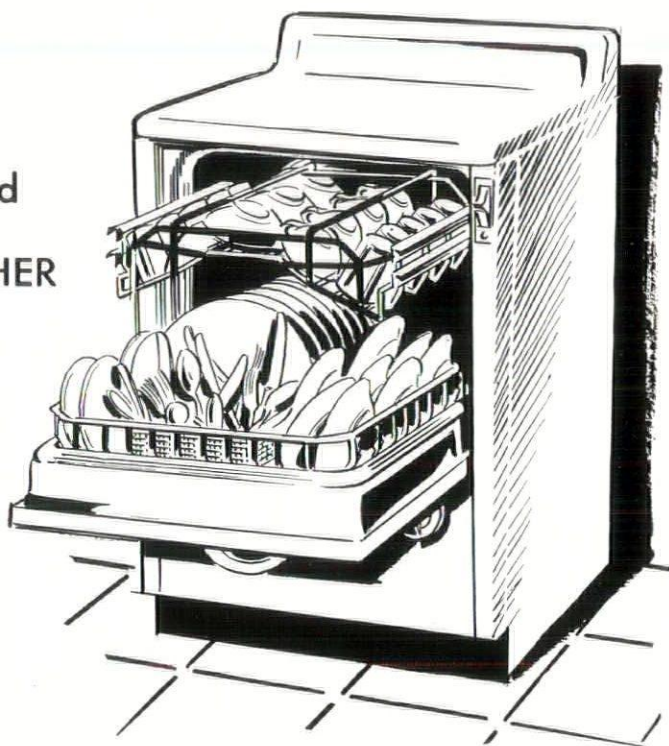
48" Combination Dishwasher-Sink
(Model KD-31)



Free-Standing Cabinet Style
(Model KD-21)



Under Counter Dishwasher
(Model KD-11)



***There's A KitchenAid Model
To Fit Any Kitchen***

The nicest kitchen in the world is nicer still when a KitchenAid Automatic Dishwasher is installed. It's the only one whose basic principles have been pioneered, tested and proved unsurpassingly superior in the world's biggest, busiest kitchens. Small wonder, then, that busy housewives want a KitchenAid in their kitchens, too. There are 3 models to choose from, all in sparkling white, gleaming copper or satiny stainless steel, with other colors available.

KitchenAid

The Finest Made...by



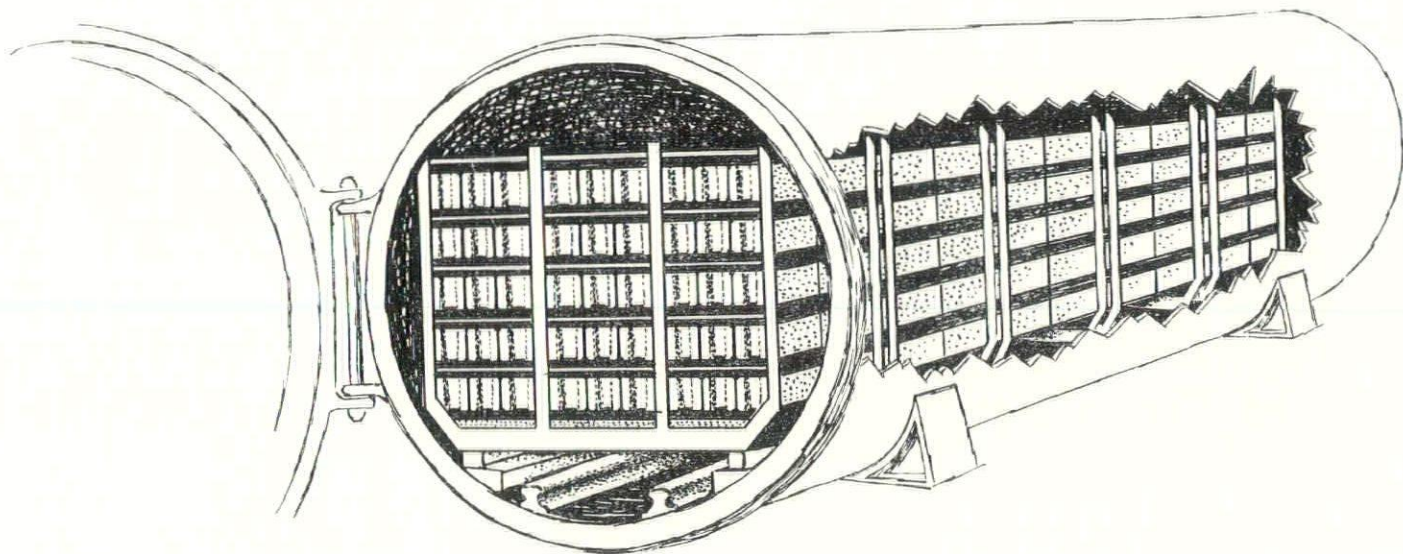
World's Largest Manufacturer of Food, Kitchen and Dishwashing Machines



Manpower On The Job

A multitude of reasons and the result
of a Harlan Electric Company
efficient and top-quality installation

© Allen Harlan



what are the Results of HIGH-PRESSURE CURING?

The curing of Light-Weight Block by HIGH-PRESSURE HIGH-TEMPERATURE STEAM imparts valuable properties not resulting from any other method.

Light-Weight Block cured by this method are different from other block. The rapid reduction in pressure, when steam and pressure is released at the end of the curing cycle, reduces the moisture content of the block below normal atmospheric humidity. This results in a more stable block, and reduces future shrinkage from wetting and drying by at least 50%.

The "sand-lime brick" reaction (which converts the amorphous calcium silicates found in low-pressure cured blocks to crystalline forms) contributes to this stability, and also gives a high initial and permanent strength. These block are ready for immediate use since they approach their full strength within the first 24 hours, equal to at least 28 days of moist curing.

what it is High-Pressure Steam Curing is a method by which Light-Weight Block are placed in large steel Autoclaves and subjected to 350° steam at 100% humidity under 150 p.s.i. Today nearly \$500,000 is being spent in our plant to install a High-Pressure Steam Curing System. While for years we have been furnishing a high-quality low-pressure cured block, soon High-Pressure curing will enable us to offer an even better Light-Weight Block.

Please call on us at any time for further information without obligation.

9143 HUBBELL AVENUE, DETROIT 28 • VERMONT 8-3200

CINDER BLOCK INC.

Reliable Manufacturers of Light-Weight Block since 1923

residential architects

BUILDERS ASSOCIATION OF METROPOLITAN DETROIT is interested in obtaining a list of architects desirous of doing houses of small and medium size, says Mr. Robert M. Nelson, chairman of the Association's Educational Committee.

"Architects and builders form a natural team," Mr. Nelson says, and he adds that "working together as efficient partners in congenial atmosphere of mutual helpfulness, their combined training, experience and abilities enhance residential values, and so contribute a worthy public service."

Mr. Nelson reminds us that in the past narrow lots restricted design, whereas the modern movement to the suburbs offers a wider scope and challenges the best that combined effort of architects and builders can provide.

An effort is being made by a joint committee of architects and builders at the national level whereby architects operating in the house field can render a service the builders can afford, and at which the architects can make a reasonable profit. Perhaps the ultimate objective would be developments in which architects would start with site planning, and carry through to a certain number of house designs, with possibly a royalty arrangement. Certainly, the fee would need to be negotiated, and that part should be on a direct architect-client basis.

Detroit Chapter, American Institute of Architects requests its members to notify the Chapter headquarters of their interest in entering into such negotiations.

table of contents

Residential Architects	3	Michigan Society of Architects	9	Architects in the News	36
Profession of Architecture	5	H. E. Beyster & Associates, Inc.	11 to 31	Frank Chase Walker	39
Advertisers Index	5	Saginaw Chapter, A.I.A.	33	Gerald George Diehl	41-43
Come to Mackinac Island	7	Michigan Items	33 to 35	Concrete Products Assoc. Party	45
Mackinac Conference Program	7	National Architect	36	Cinder Block, Inc.	47

coming issues

AUGUST — 12th Annual Mackinac Mid-summer Conference

SEPTEMBER — Harley, Ellington & Day, Inc.

OCTOBER — Detroit Chapter, A.I.A.

NOVEMBER — Diehl & Diehl

DECEMBER — Annual M. S. A. Roster (Geographical) & Saginaw Valley Chapter, A.I.A.

JANUARY, 1956 — Giffels & Vallet, Inc., L. Rossetti

FEBRUARY — Louis G. Redstone

MARCH — 42nd Annual M. S. A. Convention

APRIL — Carl R. Habermas

MAY — R. S. Gerganoff

JUNE — Annual M. S. A. Roster (Alphabetical) & Western Michigan Chapter, A.I.A.

JULY — Charles D. Hannan

monthly bulletin, michigan society of architects, volume 29, no. 7

MONTHLY BULLETIN

Michigan Society of Architects
120 Madison Ave., Detroit 26, Mich., WO 5-3680

Official Publication of the Michigan Society of Architects: Elmer J. Manson, President; Charles B. McGrew, 1st Vice-president; Adrian N. Langius, 2nd Vice-president; Paul A. Brysselbout, 3rd Vice-president; James B. Morison, Secretary; Phillip C. Haughey, Treasurer; Directors—Roger Allen, Willard E. Fraser, Sol King, Amedeo Leone, Leo I. Perry, Eberle M. Smith, Linn Smith.

The name "Monthly Bulletin, Michigan Society of Architects" is owned by Monthly Bulletin, Inc., a subsidiary of the Michigan Society of Architects, a Michigan non-profit corporation. Otherwise owned by Talmage C. Hughes, F.A.I.A., founder (1926), editor and publisher, Executive Secretary of the Society and of the Detroit Chapter, The American Institute of Architects.

Edited and published under the direction of Monthly Bulletin, Inc.: Adrian N. Langius, President; Sol King, Vice-president; Leo I. Perry, Secretary-treasurer; Paul A. Brysselbout and Amedeo Leone, Directors; Talmage C. Hughes, Resident Agent.

OTHER SOCIETY COMMITTEES:

Executive—Elmer J. Manson, Chairman; Paul A. Brysselbout, Adrian N. Langius, Charles B. McGrew, Linn Smith.

Administrative—Adrian N. Langius, Chairman; Sol King, James B. Morison, Leo I. Perry, Linn Smith.

Public and Professional Relations—Charles B. McGrew, Chairman; Roger Allen, Phillip C. Haughey, Amedeo Leone. **Advisory**—Benjamin E. Rine, Malcolm R. Stirton, Frederick E. Wigen.

Education and Research—Paul A. Brysselbout, Chairman; Willard E. Fraser, Sol King, Eberle M. Smith. **Advisory**—Paul B. Brown, Ralph W. Knuth, Carl C. Kressbach.

Monthly Bulletin—Paul A. Brysselbout, Sol King, Adrian N. Langius, Amedeo Leone, Leo I. Perry.

Movie—Phillip C. Haughey, Chairman; Roger Allen, Talmage C. Hughes, Ferdinand A. Loebach, Charles A. O'Bryon, Clarence H. Rosa.

Inter-Professional Council—Amedeo Leone, Chairman; Leo M. Bauer, Talmage C. Hughes, Leo I. Perry.

Technical Problems—Eberle M. Smith, Chairman; Eugene T. Cleland, Lynn W. Fry, Adrian N. Langius, George L. W. Schulz, John C. Thornton.

Biddle House—Adrian N. Langius, Chairman; Roger Allen, Clarke E. Harris, Louis C. King-scott, Warren L. Rindge. **Consultant**—Emil Lorch.

Public Relations—Leo M. Bauer, Chairman; Willard E. Fraser, Robert F. Hastings, Phillip C. Haughey, John W. Jickling, Charles A. O'Bryon, Benjamin E. Rine, Frederick G. Stickie, Malcolm R. Stirton, and Frederick E. Wigen.

Midsummer Conference, Grand Hotel, Mackinac Island, August 4-6, 1955—Frederick E. Wigen, Chairman.

APELSCOR—Earl G. Meyer, Chairman; Amedeo Leone, Arthur O. A. Schmidt.

Auditing—Paul A. Brysselbout, Chairman; Leo I. Perry.

Preservation of Historic Buildings—Emil Lorch.

Fees—Charles B. McGrew, Chairman; Roger Allen, Kenneth C. Black, Amedeo Leone, Linn Smith, James A. Spence, Edward X. Tuttle, Peter Vander Laan.

OFFICIAL PUBLICATION — Western Michigan Chapter, A.I.A.: Hubert W. Van Dongen, President; Ion C. Ironside, Vice-president; Malcolm B. McMillen, Secretary-treasurer; Adrian N. Langius, Elmer J. Manson, Directors.

OFFICIAL PUBLICATION—Saginaw Valley Chapter, A.I.A.: Willard E. Fraser, President; Samuel C. Allen, Vice-president; A. Charles Jones, Secretary; Thomas Neal Eubank, Treas.

including national architect

OFFICIAL PUBLICATION — National Council of Architectural Registration Boards.

Fred L. Markham, Provo, Utah, President; Edgar H. Berners, Green Bay, Wis., 1st Vice-president; Joe E. Smay, Norman, Okla., 2nd Vice-president; Walter F. Martens, Charleston, W. Va., 3rd Vice-president; William L. Perkins, Chariton, Iowa, Secretary-treasurer.

Executive Committee consists of aforementioned officers and Charles E. Firestone, Canton, Ohio. Council Board of Review: Lucius R. White, Jr., Baltimore, Md.; Ralph Edward Winslow, Troy, N. Y.; A. Reinhold Melander, Duluth Minn.

OFFICIAL PUBLICATION—Detroit Chapter of The American Institute of Architects;

Suren Pilafian, President; Gerald G. Diehl, Vice-president; Lyall H. Askew, Secretary; Arthur O. A. Schmidt, Treasurer; Paul B. Brown, Maurice E. Hammond, Earl G. Meyer, Amedeo Leone, Directors; Talmage C. Hughes, Executive Secretary.

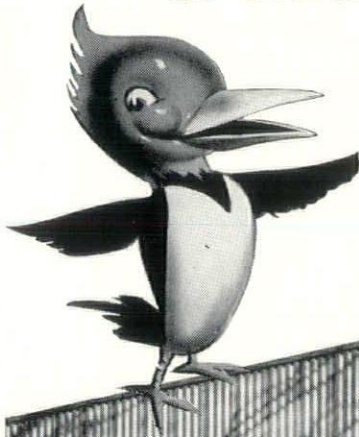
Listed in Standard Rate & Data Service. For further information, see page 1.

Theodore G. Seemeyer, Jr., Advertising Director; 120 Madison Avenue, Detroit 26, Michigan. WOODWARD 5-3680.

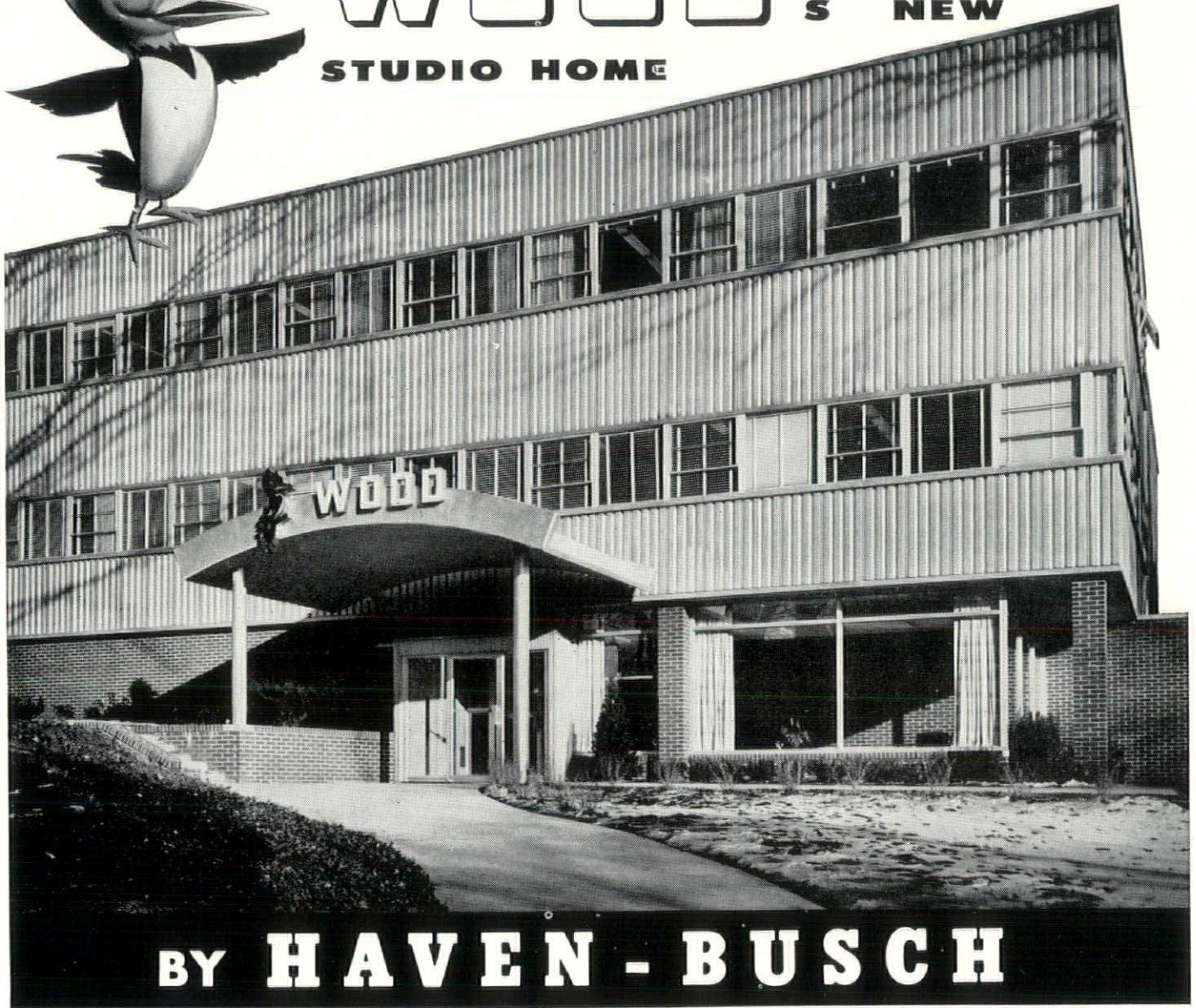
Address all inquiries concerning National Council of Architectural Registration Board to William L. Perkins, Secretary-treasurer, 736 Lucas Ave., Chariton, Iowa.

Subscription \$3 per year (members \$1.50). 30c per copy (Rosters \$1).

A NEST OF STEEL FOR A FAMOUS BIRD



WOOD'S NEW STUDIO HOME



BY **HAVEN - BUSCH**

Providing a new home for WOOD and WOOD-TV's famous woodpecker required the close cooperation of architects, builder and Haven-Busch Company's design engineers. In supplying, fabricating, and erecting all structural steel in the WOODland Center, Haven-Busch helped adapt the rugged structural qualities of steel to the exacting needs of a broadcasting studio.

When your problems involve steel
— contact Haven-Busch

DESIGNERS — FABRICATORS — ERECTORS

since 1888

HAVEN - BUSCH

501 Front Ave., N.W.

Grand Rapids 4, Mich.

Phone 94173

STRUCTURAL STEEL — MISCELLANEOUS IRON
T-CHORD LONGSPAN JOISTS



profession of architecture

From the Journal of Commerce,
Seattle, Wash., March 4, 1955

Architecture is one of the oldest and most respected of the professions. The architect is definitely a professional man. He is creative. He abides by a code of professional ethics. But architecture is more competitive in a commercial way than either medicine or the law. If two architects of equal ability enter practice and one sits in his office waiting for business to come his way while the other goes out after commissions to plan buildings there need be no question as to which will move ahead more rapidly in the profession. Naturally an architect with exceptional ability as a designer can count that qualification a business asset but he may seldom be afforded opportunity to display his ability if he is lacking in personal sales ability or the inclination to go out and sell his services.

In all the years we have been in more or less close contact with architects we have found them, as a class, sincere, capable and hard-working. But there have been times when we have felt that certain members of the profession retarded their advance by assuming an overly-serious professional attitude. We recall one architect in particular at whose office our newsmen called who said, "I will give out no news whatever, at any time. My relations with my clients are exactly the same as those of a physician with his patients." Many knew that he was taking contract bids on a fairly important building project. It was common knowledge among contractors, bond houses and material dealers that work would soon proceed. It meant business for many firms. Such projects cannot remain "professional secrets." There is little, if any, similarity between an architect's relations with his clients and those of the physician with his patients.

This is in no sense leading up to any contention that an architect should employ salesmen to go out and sell his services, use flamboyant advertising and make his office a purely commercial enterprise. But the architect should not attempt to ignore the fact that he is in a highly competitive field of professional activity.

An architect with whom we were well acquainted and who planned many of the outstanding buildings of this region, once said to us: "If I had a son who wanted to become an architect, I would help him get the best architectural education and basic training possible. Then I would urge him to study salesmanship — not mouse-trap selling, door-to-door techniques—but the psychology of high-class salesmanship. I know, through long experience that an architect must continually sell himself to school directors, public officials, heads of business firms, owners of buildings and many others. The architect who waits for commissions to be offered him will have a long and very unprofitable period of idleness."

Nationally-prominent architects like Frank Lloyd Wright and a dozen others we could name, do not shy away from constructive, business-attracting publicity.

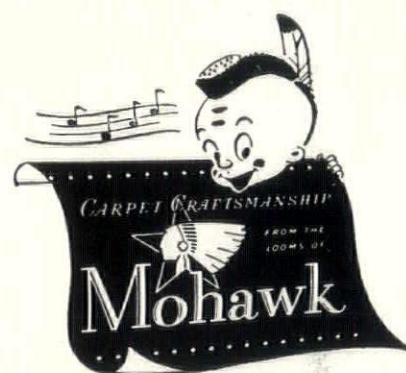
MOHAWK engineered CARPET installations by *C. A. Finsterwald Co.* COMMERCIAL INTERIORS

714 W. McNichols Rd.

Detroit 3, Michigan

Phone

Superior 8-8492



advertisers

Abstract & Title Guaranty Co.	24	Leggett, R. E. Co.	46
Alexander-Stafford Corp.	10	Long Sign Co.	32
Allied Steel & Conveyors, Inc.	6	Lyons, Ray T. Co.	26
Andersen Casements	34	Mahon, R. C. Co.	4th Cover
Back, Wm. F. Lumber Co.	40	Major Plumbing & Heating Co.	48
B & L Electric Co.	46	McMillan Products Co.	6
Boice Builders' Supply	48	Mechanical Heat & Cold, Inc.	46
Buhl Sons Co.	5	Meir Cut Stone Co.	42
Burford, D. D. & Co.	28	Mercier, John A. Brick Co.	40
Burke, O. W. Co.	28	Mercury Roofing & Sheet Metal Co.	48
Busby, John H. Co.	42	Michigan Asphalt Paving Assoc., Inc.	24
Cadillac Glass Co.	24	Michigan Consolidated Gas Co.	10
Candler, J. D. Roofing Co., Inc.	28	Michigan Drilling Co.	40
Candler, Wallace, Inc.	42	Modernfold Door Sales Co.	48
Century Brick Co.	28	Mohawk Carpet	5
Chem Brick	8	Monthly Bulletin (Books)	22
Cinder Block, Inc.	2	Moynahan Bronze Co., Inc.	16
Concrete Pipe Assoc. of Mich.	8	National Time & Signal Corp.	22
Couse, Walter L. & Co.	44	Nelson Co.	40
Demicon Cure-Hard	6	Osberger, T. L. Co.	22
Den Braven, M.	32	Owens-Corning Fiberglass Corp.	37
Detroit Brick & Block Co.	8	Pagel's, Inc.	26
Detroit Edison Co.	3rd Cover	Place, Walter O. Co.	40
Detroit Fiberglass	37	Prestressed Concrete, Inc.	16
Detroit Marble Co.	22	Price Brothers Co.	14
Diebold, Inc.	48	Radio Distributing Co.	2nd Cover
Dunn-Rainey Co.	32	Rayner Roofing Co.	46
Faulstich, R. C.	32	Reflective Insulation Co.	28
Finsterwald, C. A. Co.	5	Restrick Lumber Co.	40
Firestone Printing & Publishing Co.	22	Sauer, Otto H. Co.	48
Flexicore	14	Service Art Plastering Co.	48
Freeman, John H. Co.	32	Schaibley, W. F. Co.	26
Gibraltar Floors, Inc.	48	Sibley, F. M. Co.	40
Gildemaster	33	Skitch, Jack	44
Grace Harbor Lumber Co.	40	Smith Fireproofing Co.	44
Hamill Electric Co.	28	Smith-Maynard Electric	32
Hamill, N. W. Co.	46	Stevens, Frederic B., Inc.	16
Hanley Co.	40	Taubman Co.	46
Harlan Electric Co.	1	Thomas Brick & Tile Co.	42
Harty, R. V. Co.	22	Turner-Brooks, Inc.	44
Haven-Busch Co.	4	Turner Engineering Co.	44
Heineman & Lovett Co.	46	Utley, J. A. Co.	14
Hickson, A. N., Inc.	42	Vampco	24
Hoge-Warren-Zimmermann Co.	44	Van Dam Iron Works	44
Huron Portland Cement Co.	24	Whitcomb-Bauer Flooring, Inc.	16
Hutton, Robert & Co., Inc.	32	Whizzer Products Co.	33
Kimball & Russell, Inc.	44	Wilkins, M. H. Co.	44
Kitchen Aid	2nd Cover	Wolverine Marble Co.	26
Krieghoff Co.	35	Young, Ben T. Waterproofing Co.	46

ALLIED STEEL AND CONVEYORS, INC.



17333 HEALY AVENUE • TELEPHONE TWINBROOK 2-3040 • DETROIT 12, MICHIGAN

**Designers
Fabricators
Erectors**

MISCELLANEOUS IRON WORK

DOOR FRAMES • SILLS, LINTELS •
CURB ANGLES, RACKS • LIGHT TRUSSES •
STAIRS, LADDERS, FIRE ESCAPES •
CRANE RUNWAYS •



CONCRETE FLOORS CURED & HARDENED

IN

OPERATION

- No Wax or Resin
- The Perfect Curing Material Under Asphalt or Rubber Tile
- Resistance to Salt and Chemicals
- Permanent Dustproofing
- Use Direct From Drums—No Mixing

McMILLAN PRODUCTS CO.

2045 E. 8 MILE RD.
HAZEL PARK, MICH.

Send full details and prices on Demicon Cure-Hard to:

Name
Firm
Address
City Zone State

APPROX. COST

3/4c per Square Foot

H. E. Beyster Projects

**We are proud of
DEMICON
installations on:**

- J. L. Hudson Northland Shopping Center
DETROIT, MICHIGAN
- Chevrolet-Tonawanda,
NEW YORK
- Herman Kiefer Hospital
DETROIT, MICHIGAN

Contractors
Total Labor and Material
Cost for Demicon Cure-Hard

come to mackinac island

August 4, 5 and 6, 1955

THE TWELFTH ANNUAL MIDSUMMER CONFERENCE OF THE MICHIGAN SOCIETY OF ARCHITECTS will be held at the Grand Hotel on Mackinac Island, August 4, 5 and 6, 1955.

Delegates and guests will arrive at the hotel on Thursday, August 4 for registration, informal reception, recreation and a cocktail party at 5:00 P.M. sponsored by the Owens-Illinois Glass Company and the Detroit Steel Products Company. The first evening will be open for dinner in the main dining room and dancing in the Hotel's Terrace Room.

At 9:00 A.M. Friday the Society's Board of Directors will hold an open meeting, presided over by President Elmer J. Manson of Lansing, and this will be followed by greetings from the national A.I.A., represented by Past President Clair W. Ditchy, F.A.I.A., of Detroit; Great Lakes Regional Director, Raymond S. Kastendieck, of Gary, Ind., and Edmund R. Purves, F.A.I.A., of Washington, D. C., Executive Director.



Fred E. Wigen, Chairman

A feature of the Conference will be an exhibition of twelve paintings entitled "Adventures in Time," sponsored by Mr. C. Allen Harlan, of Detroit, President of Harlan Electric Company, and painted by Detroit muralist Marvin Beerbohm. Messrs. Harlan and Beerbohm will speak on the philosophy of the paintings at the Friday morning session.

Also Friday morning there will be a seminar on "The Future of Plastics in Buildings," and the speaker will be Mr. Amos Ruddock of the Dow Chemical Company. He will be assisted by a member of the Dow Company's technical staff. This session will be presided over by Linn Smith, past President of the Society.

At 12:30 P.M. Friday there will be a buffet luncheon in the Hotel's Terrace Room. The afternoon Friday will be given over to recreation and games for which there will be prizes.

At 5:00 P.M. Friday there will be a buffet luncheon in the Hotel's Terrace Room. The afternoon Friday will be given over to recreation and games for which there will be prizes.

At 5:00 P.M. The Portland Cement Association will be host at a cocktail party, an annual event at which the Company awards a trophy to the "Architect of the Year." Following dinner Friday evening there will again be dancing.

Saturday morning there will be a second seminar, at which Professor Ralph W. Hammett, A.I.A., of Ann Arbor, will give an address on his recent sabbatical year in Europe, and his talk will be illustrated by color slides made on his trip. Paul A. Brysselbout, Vice-President of the Society, will preside.

dent; Raymond S. Kastendieck, Great Lakes Regional Director, and Edmund R. Purves, Executive Director.

10:30 A.M.—Seminar, Club Room; Linn Smith, Past President, Presiding
Speaker: Amos Ruddock, of the Dow Chemical Company
Subject: "The Future of Plastics in Buildings"
Followed by Discussion and Audience Participation

11:30 A.M.—"Adventures in Time," discussion of a series of Paintings on exhibition, by C. Allen Harlan, Sponsor and Marvin Beerbohm, Muralist

12:30 P.M.—Buffet Luncheon, Terrace Room
AFTERNOON—Relaxation, Recreation, and Games for which there will be prizes

5:00 P.M.—President's Reception, Club Room
Presentation of Man of the Year Trophy by Hosts, Portland Cement Association

7:00 P.M.—Dinner, Main Dining Room
10:00 P.M.—Annual Midsummer Dance



Harvey Campbell, Speaker

The afternoon Saturday will be devoted to sports, recreation and sight-seeing.

At 5:00 P.M. Saturday there will be a cocktail party in the Terrace Room, and this will be followed by the Annual Midsummer Banquet, at which the speaker will be Mr. Harvey Campbell, Executive Vice-President of the Detroit Board of Commerce. His subject will be "Where is Michigan Going?" Adrian N. Langius, F.A.I.A., of Lansing, will be the toastmaster.

Mr. Campbell is an able speaker and is well qualified to tell his audience of what may be expected in our State, with particular reference to the coming development of the St. Lawrence Seaway.

Reservations for Hotel accommodations should be made direct with the Grand Hotel, Mackinac Island, as soon as possible. This event has been a sell-out for many years past. The Hotel sets aside a certain number of rooms which are quickly taken.

program

THURSDAY, AUGUST 4, 1955

9:00 A.M. to 5:00 P.M.—Arrivals, Registration (Men \$5, Ladies Free)

5:00 P.M.—Reception and Cocktail Party, Terrace Room; Hosts Owens-Illinois Glass Co. and Detroit Steel Products Co.

7:00 P.M.—Dinner, Main Dining Room (All Meals American Plan)

10:00 P.M.—Dancing, Terrace Room

FRIDAY, AUGUST 5

Breakfast, Main Dining Room
Registration Continues

9:00 A.M.—Board of Directors, Open Meeting, Club Room
President Elmer J. Manson, Presiding

10:00 A.M.—Greeting from the National A.I.A.
Clair W. Ditchy, Past Presi-

SATURDAY, AUGUST 6

8:00 A.M.—Breakfast, Main Dining Room
Registration Continues

10:00 A.M.—Seminar, Club Room; Vice-President Paul A. Brysselbout Presiding
Speaker: Professor Ralph W. Hammett, A.I.A.
Subject: Illustrated Lecture on Recent European Travels

12:30 P.M.—Luncheon, Main Dining Room

AFTERNOON—Rest, Recreation, Sports, Shopping, Relaxation, Sight-Seeing

5:30 P.M.—Cocktail Party, Club Room
Hosts Producers' Council, Inc. Michigan Chapter

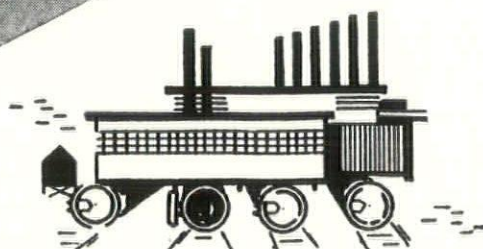
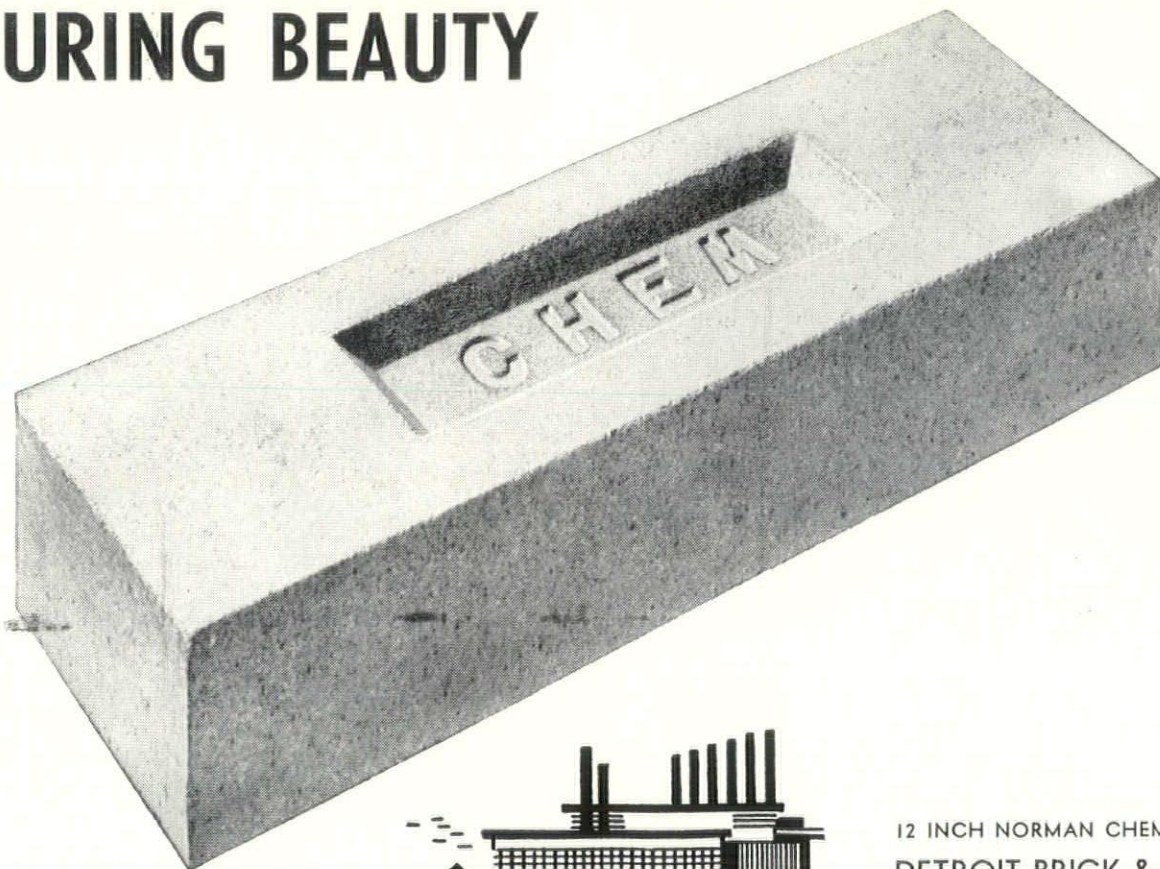
7:00 P.M.—12th Annual Midsummer Banquet
Toastmaster: Adrian N. Langius, F.A.I.A.
Speaker: Harvey Campbell, Executive Vice-President Detroit Board of Commerce
Subject: "Where is Michigan Going?"
Adjournment

10:30 P.M.—Dancing, Terrace Room

SUNDAY, AUGUST 7

Breakfast, Church, Departures

ENDURING BEAUTY



12 INCH NORMAN CHEM BRICK BY
DETROIT BRICK & BLOCK CO.
95 South St. Jean, Detroit 14, Valley 2-4880

WE'VE GOT WHAT IT TAKES TO MEET YOUR SPECIFICATIONS!

Whatever your need may be, there is a CONCRETE PIPE made to fit it. Concrete Pipe Association Companies produce a complete range of sizes from 6" to 144" diameters as well as FIVE different strength specifications.

Nine member companies stand ready to meet your specifications with CONCRETE PIPE delivered WHEN AND WHERE the contractor wants it. Write Association for full details.



CONCRETE PIPE ASSOCIATION OF



Michigan INC.

P.O. BOX 416, ANN ARBOR MICHIGAN





LOUIS ROSSETTI, F.A.I.A.

LOUIS ROSSETTI, a distinguished architect of Detroit was elevated to Fellowship in the Institute for "Achievement in Design" at the 87th Annual Convention of the American Institute of Architects held in Minneapolis. The Honor was conferred at the annual banquet, June 23, 1955.

Mr. Rossetti is Chief Architect of the nationally known Detroit firm, Giffels & Vallet, Inc., L. Rossetti, Associated Engineers and Architects and his competence in architectural design, through the wide operations of the organization, is to be found in projects throughout the nation and in many foreign countries.

Over the past twenty-five years the influence of Louis Rossetti's ability has become increasingly evident. Many industrial structures, schools, housing, and other projects of Giffels & Vallet, show the genius of his guiding hand and the diversity of his abilities. Current work of the firm, under his personal direction, includes the new Convention-Exhibits Building which will soon be constructed at the western end of the new Civic Center, Detroit, and will be one of the largest structures of its kind in the world.

This new honor, the only election to the College of Fellows from Michigan this year, is a worthy recognition of Louis Rossetti's contribution to architectural design and of his many attainments and usefulness as an architect and as a citizen. In 1951 he received an A.I.A. National Honor Award for the design of the Veterans Administration General Hospital, a project of Giffels & Vallet at Fort Wayne, Indiana. In 1952 he received the Honor Award of the Western Michigan Chapter, A.I.A. for

outstanding work in design, with special reference to the Hekman Biscuit Company project at Grand Rapids. The excellence of his work also brought recognition as a Special Awards Winner for 1954 by the Editors of Factory Magazine in connection with two projects of Giffels & Vallet: Rex Manufacturing Company, Connorsville, Indiana and International Business Machines Corporation, Greencastle, Indiana.

Accomplishments of this order often emerge from an interesting background and training. This instance is no exception. He was born in Paris, France in 1895 of Italian and German parents; related on his father's side of the nineteenth century English painter and poet Dante Gabriel Rossetti. His high school education was taken in Dresden, Germany and his undergraduate college work was at the College of Engineering, Berlin, Germany. During World War I he served in the Italian Army with the rank of Captain. As a memento of this experience he still carries an Austrian bullet lodged in his body. After this service he turned to his professional studies at the Royal Institute of Applied Engineering, Rome, Italy, where he graduated as an Architectural Engineer and later took his Doctorate in Engineering in 1922.

From 1922-23 he taught architecture as Assistant Professor at the Royal Institute of Professional Instruction, Rome, Italy. In 1924 he was given a Travelling Scholarship to the U. S. A. for the winning design of a school building. This scholarship visit

to our shores gave him the desire to make this his adopted country. He returned to the United States in 1924.

After serving with the Ford Motor Company Engineering staff from 1924-27, he joined the organization of Giffels & Vallet in 1928. In 1930 an association was formed with the organization resulting in the present firm name Giffels & Vallet, Inc., L. Rossetti.

With such a background and training, his viewpoint is broad both on architectural and general subjects. Over the past ten years, especially, he has made frequent trips to foreign countries, including missions such as, the study of International Trade Fairs for the City of Detroit and in connection with the projects of Giffels & Vallet for Fiat at Turin, in his native Italy. His genial personality coupled with his unusual abilities have gained for Louis Rossetti a place of affectionate esteem throughout the organization and among his fellow architects of Detroit.

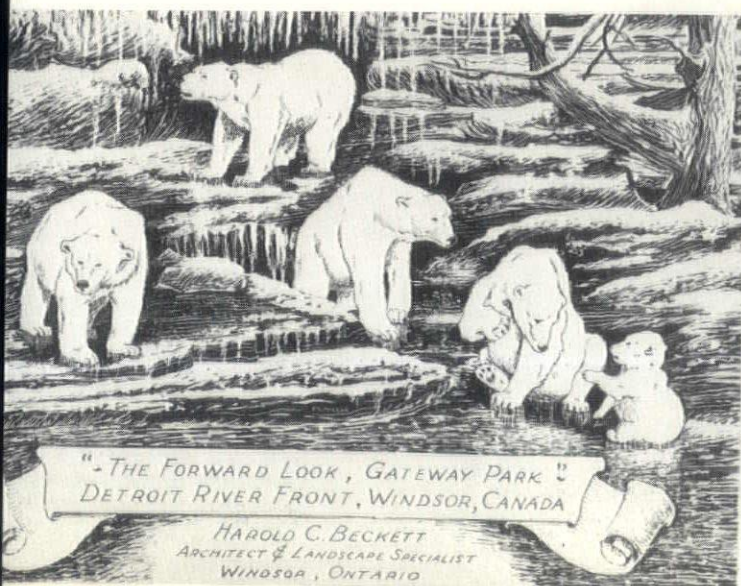
Louis Rossetti is registered in Michigan as an Architect and a Civil Engineer and in 20 other States he is registered as Architect. He is a member of the Michigan Society of Architects and the Detroit Chapter, A.I.A. which he has served as a Director. He is presently Chairman of the Committee on Civic Design.

CLAUDE D. SAMPSON, A.I.A., of Jackson, Mich., has been named vice-chairman of the Michigan Society of Architects annual midsummer conference for 1955, scheduled at the Grand Hotel on Mackinac Island, August 4-6, 1955, it is announced by Elmer J. Manson, Society president.

HAROLD C. BECKETT, A.I.A., a member of the Detroit Chapter, American Institute of Architects, who practices in Windsor, Ont., has been retained to design "Gateway Park," on the Detroit Riverfront in Windsor. (See cut below).

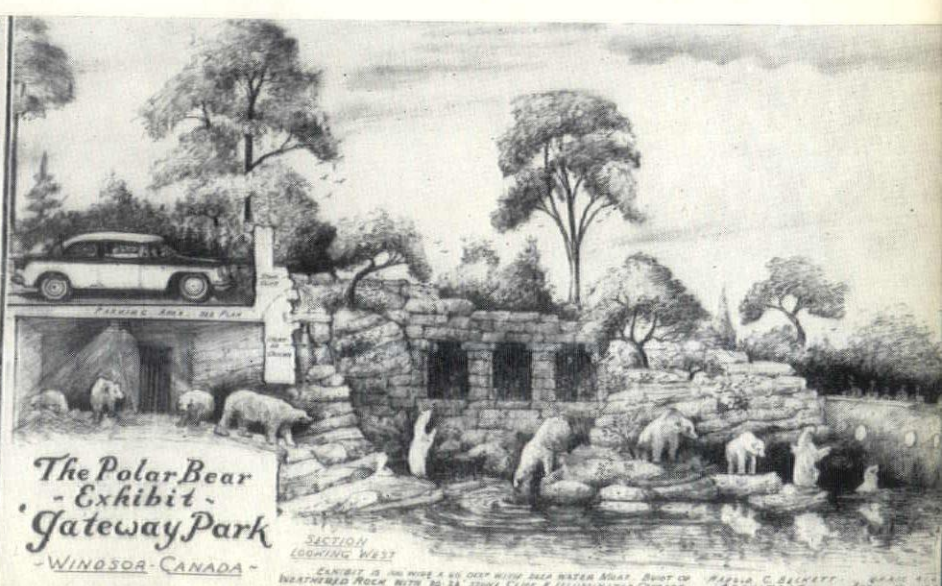
The project, intended as a gateway to Canada's vacation land, will contain a zoological park with deep water moats built of weathered rock and illuminated cascades. The development will complement Detroit's new Civic Center directly across the river.

Beckett has specialized in planning parks and he has done considerable work for the Canadian government.



"-The Forward Look, Gateway Park"-
DETROIT RIVER FRONT, WINDSOR, CANADA

HAROLD C. BECKETT
ARCHITECT & LANDSCAPE SPECIALIST
WINDSOR, ONTARIO



The Polar Bear
Exhibit
Gateway Park
-WINDSOR-CANADA-

SECTION
LOOKING WEST
CAPTION IS IN RUSSIAN & IS DEEP WITH BLUE WATER MOAT. SHOT OF
WEATHERED ROCK WITH 25' TOWER CLIFF & ILLUMINATED CASCADE.
HAROLD C. BECKETT
ARCHITECT

New SACCA RESTAURANT SERVES FINE ITALIAN-AMERICAN FOOD



Meals Prepared In All-GAS Kitchens

The newly opened Sacca Restaurant at 18800 West McNichols in Detroit is winning new patrons daily. Its attractive dining room, cocktail lounge and separate banquet room can accommodate 200 guests. And a favorite meal is the Neapolitan-style Fiesta Dinner, featured on a varied Italian-American menu.

Sacca's excellent food is prepared in an all-Gas kitchen. Equipment includes hotel ranges, broilers, fryers, steam table, coffee urns and water heater. Gas equipment is preferred because of its speed, flexibility and economy.

MICHIGAN CONSOLIDATED GAS COMPANY

Serving 785,000 customers in Michigan

ALEXANDER-STAFFORD

means

INDUSTRIAL INSULATION

Alexander-Stafford Corporation

Phone GL - 6-8685 1 Ionia Ave., N.W. Grand Rapids, Mich.

H. E. Beyster & Associates, Inc.

Architects and Engineers

Detroit

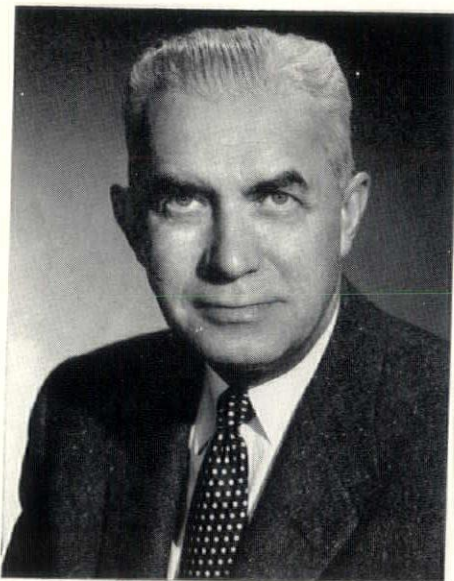


Above: H. E. Beyster, President

Far Left: George A. Newhall, Vice Pres.

Left: Raymond C. Perkins, A.I.A., Sec'y

Below: C. Henry Haberkorn, III,
Gen. Mgr.



Henry E. Beyster, founder and president of H. E. Beyster & Associates, Inc. is a graduate of the Detroit Public Schools and the University of Michigan.

In 1920 he was appointed Chief Engineer of Construction for the Fisher Body Division of General Motors Corporation. During 18 years in that capacity, he supervised the layout, planning, design and construction of projects valued at approximately \$450,000,000. On leave from General Motors, from 1937 to 1939, Mr. Beyster served as Commissioner of Public Works for the City of Detroit.

In 1940, Mr. Beyster assumed the presidency of C. H. Handyside Company, long-established in the field of construction engineering. The name was changed to H. E. Beyster & Associates, Inc. and the firm dedicated to the practice of Architecture & Engineering.

During World War II, Mr. Beyster represented the U. S. Government as engineering consultant on economic missions to India and Mexico and since that time, the firm has become internationally known for its worldwide practice.

Within the organization of H. E. Beyster & Associates, all phases of architecture and engineering are departmentalized, including design, architecture, civil and structural engineering, and mechanical and electrical design and development. Specifications, contracts and construction management are part of the services of the firm.

With a composite of experience in the design and engineering of many specialized facilities, this firm keynotes diversity—serving the building needs of industry, commerce and public agencies.

ARCHITECTS IDENTIFIED WITH THE DESIGNS SHOWN:

Werner Guenther, A.I.A.

Formerly Vice Pres. & Chief Architect

Raymond C. Perkins, A.I.A.

Secretary & Chief, Specification Department

John T. Hilberg

Chief Designer

Howard D. Cutter

Chief Architect

Bryce T. Lyall, A.I.A.

Charles J. Parise, A.I.A.

COMMERCIAL and INDUSTRIAL

Chevrolet Forge, Foundry and
Production Plant, Tonawanda, N. Y.
Westinghouse Electric Supply Co.
Michigan Bell Telephone Co.
Packard Motor Car Co.
Morley Brothers Office & Warehouse
Detroit Ordnance Research &
Engineering Laboratory
Hartz Pharmaceutical & Surgical
Supplies

SCHOOLS

Rochester High School
Pontiac Junior High School
North Hill Elementary
Jolman School
Daniel Whitfield School Addition
Lake Street School

CIVIC and PUBLIC BUILDINGS

Flint Municipal Center
Herman Kiefer Hospital addition
Holland City Hospital
Lynn Hospital

CHURCHES

First Church of Christ Scientist
Rochester, Mich.

ENGINEERING and CONSULTATIVE SERVICES

J. L. Hudson Northland Shopping
Center
Philippine Island Economic
Rehabilitation Survey
Cuban Economic Survey

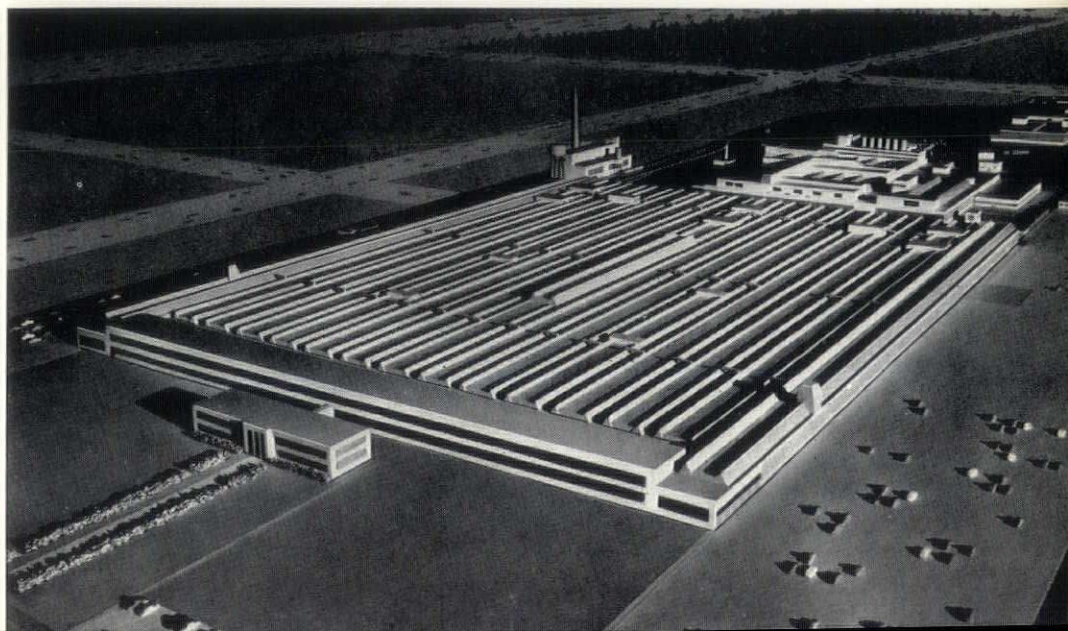


Chevrolet Motor Division Tonawanda, New York

As part of Chevrolet's nation-wide expansion program, the Tonawanda plant was expanded by the addition of 360,000 square feet of machine shop area, a complete grey iron foundry and a forge plant—more than 1,000,000 square feet of floor space.

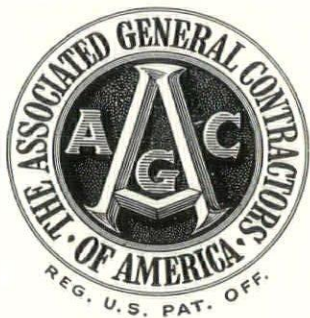
Included are two office buildings, boiler plant and compressor station expansion, an industrial waste plant, a foundry sand reclamation building, a combined river-city water system, electric substation, a waste materials incinerator plant, and a sewage disposal system.

The project also included complete site development—roads, parking lots, railroads, and site grading and drainage.



J. A. Utley Co.

General Contracting



GENERAL CONTRACTORS
FOR
MICHIGAN BELL TELEPHONE CO.
GENERAL ACCOUNTING BUILDING
DETROIT, MICHIGAN

723 East Ten Mile Road
Royal Oak, Michigan
Jordan 4-6960
Lincoln 1-3280

Flint Branch Office
3821 Lapeer Road
Flint, Michigan
Flint 3-8247

- ... to save on structural steel
- ... to "automatically" obtain smooth, finished ceilings
- ... to assure a high degree of fire resistance
- ... to lessen wall height without sacrificing headroom
- ... to insure rapid, money-saving erection in all kinds of weather
- ... to reduce weight without reducing strength

Specify FLEXICORE, THE LONG-SPAN, PRECAST CONCRETE
ROOF AND FLOOR SLAB.

*A partial list of architects who
have recently specified FLEXICORE:*

H. E. Beyster & Associates, Inc., Detroit
Robert C. Wakely, Detroit
Malcomson, Fowler & Hammond, Inc., Detroit
C. William Palmer, Detroit

Price Brothers Company

MICHIGAN flexicore DIVISION
12651 Newburg Road
Livonia, Michigan
WOODWARD 5-6376
GARFIELD 1-4030



A black and white photograph showing a close-up of the Westinghouse building's entrance. The building is constructed of brick. The word "Westinghouse" is mounted on the upper part of the wall in large, three-dimensional, stylized letters. Below the name is a glass-paned entrance with a small overhang. A sign above the glass door reads "Westinghouse ELECTRIC SUPPLY CO 7211 KELLEY AVE". Concrete steps lead up to the entrance.

Westinghouse

All Photos by Lens-Art, Detroit,
unless otherwise identified

**Westinghouse Electric Supply Company
Detroit, Michigan**

A general offices and warehouse structure for
a regional distribution center.



ORNAMENTAL METALS

The Architects for J. L. Hudson's Northland Center received universal acclaim for their work. We are proud that as Ornamental Contractors producing the Stainless Steel Curtain Wall Exteriors, we shared that acclaim.

We maintain a complete advisory personnel that is at your service for consultation.

**moynahan
bronze
co., inc.**

flat rock, mich., du. 2-3234 • detroit office, 9545 grand river, te. 4-2198



J. L. HUDSON'S
NORTHLAND
CENTER,
DETROIT

PRESTRESSED CONCRETE, Inc.

DESIGNERS and MANUFACTURERS of
PRESTRESSED CONCRETE MEMBERS FOR
BRIDGES, BUILDINGS, FOUNDATIONS AND PILINGS

Prestressed concrete is today's practical answer to greater load capacity . . . less weight . . . notable economy and fireproof construction.

6497 E. 10 MILE ROAD, CENTER LINE, MICHIGAN • SLocum 7-3945

Let us show you our complete selection . . .



brick or tile

Face brick of every description

including

Roman Brick • Norman Brick • Rancho Brick • Antique Brick
Reds Buffs Greys Iron Spots

We have the largest and most diversified line of face brick in the Detroit area.



VISIT OUR SHOWROOMS

Complete show rooms located at
Eighteenth Street and Vernor Hwy.
Phone: TAshmo 5-0725

Before Selecting BRICK — See What STEVENS Offers . . .

COMPLETE WOOD FLOOR INSTALLATIONS

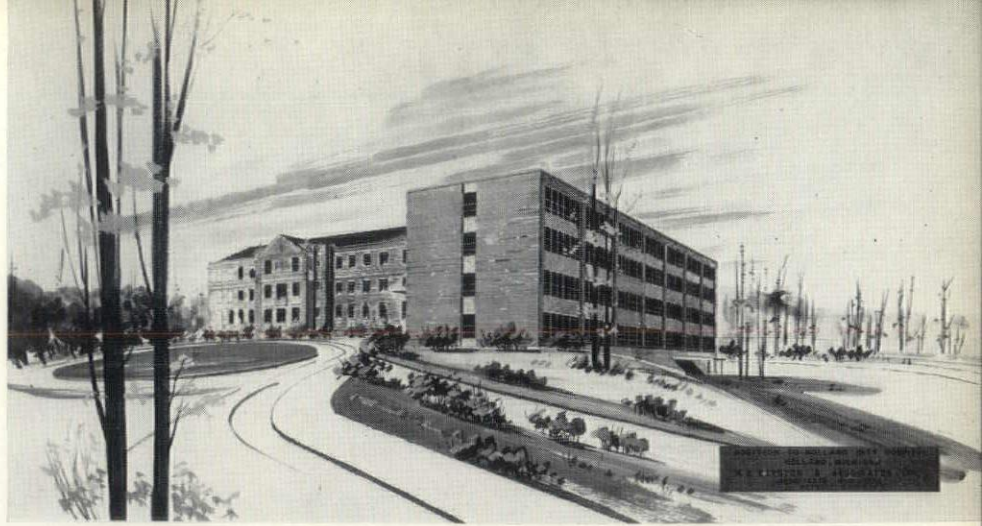
- Ironbound* Continuous Strip* Hard Maple — Edge Grain — Flat Grain
- Hardwood Flooring in Maple, Beech, Birch and Oak
- For Gymnasiums, Classrooms, Industry, Ballrooms, Shops, Apartments

*Reg. U.S. Pat. Off.

WHITCOMB-BAUER FLOORING, INC.

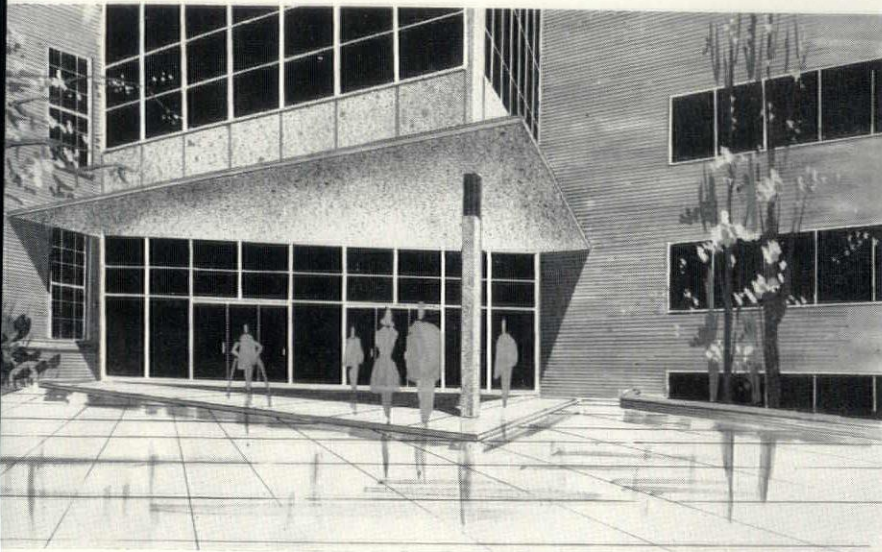
10301 Lynden at Griggs • Detroit 38, Michigan • WEBster 3-4320

For 27 Years Specialists in Industrial and Fine Wood Floor Installations



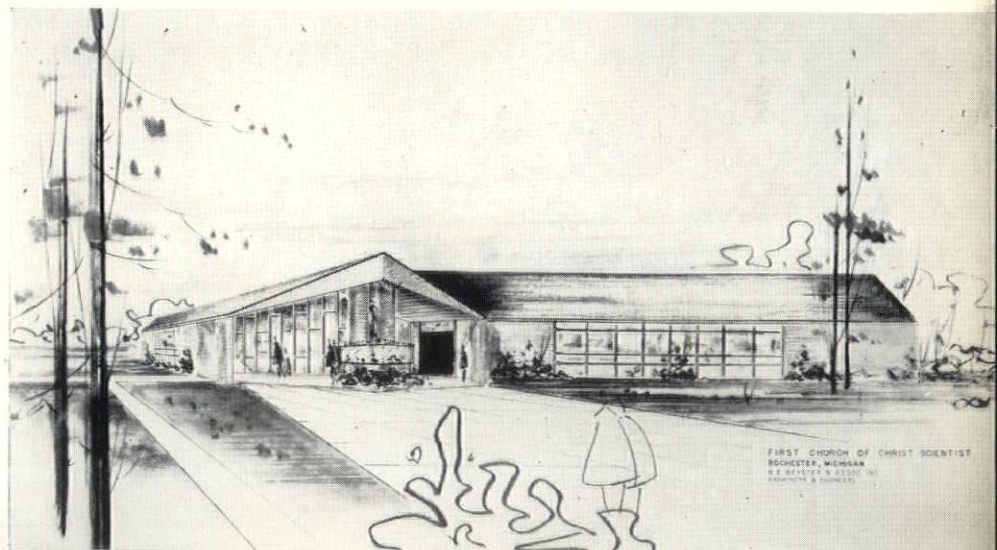
Above & Left:
Holland Hospital Addition
Holland, Michigan

This project consists of an addition to existing hospital facilities. The surgical suite, central nursing supply room, kitchens and administrative offices will all be housed in the new addition and the original building will be rehabilitated to accommodate additional patients. The present hospital is comprised of approximately 75 beds and the total complement will be approximately 125 beds.



Right:
First Church of Christ Scientist
Rochester, Michigan

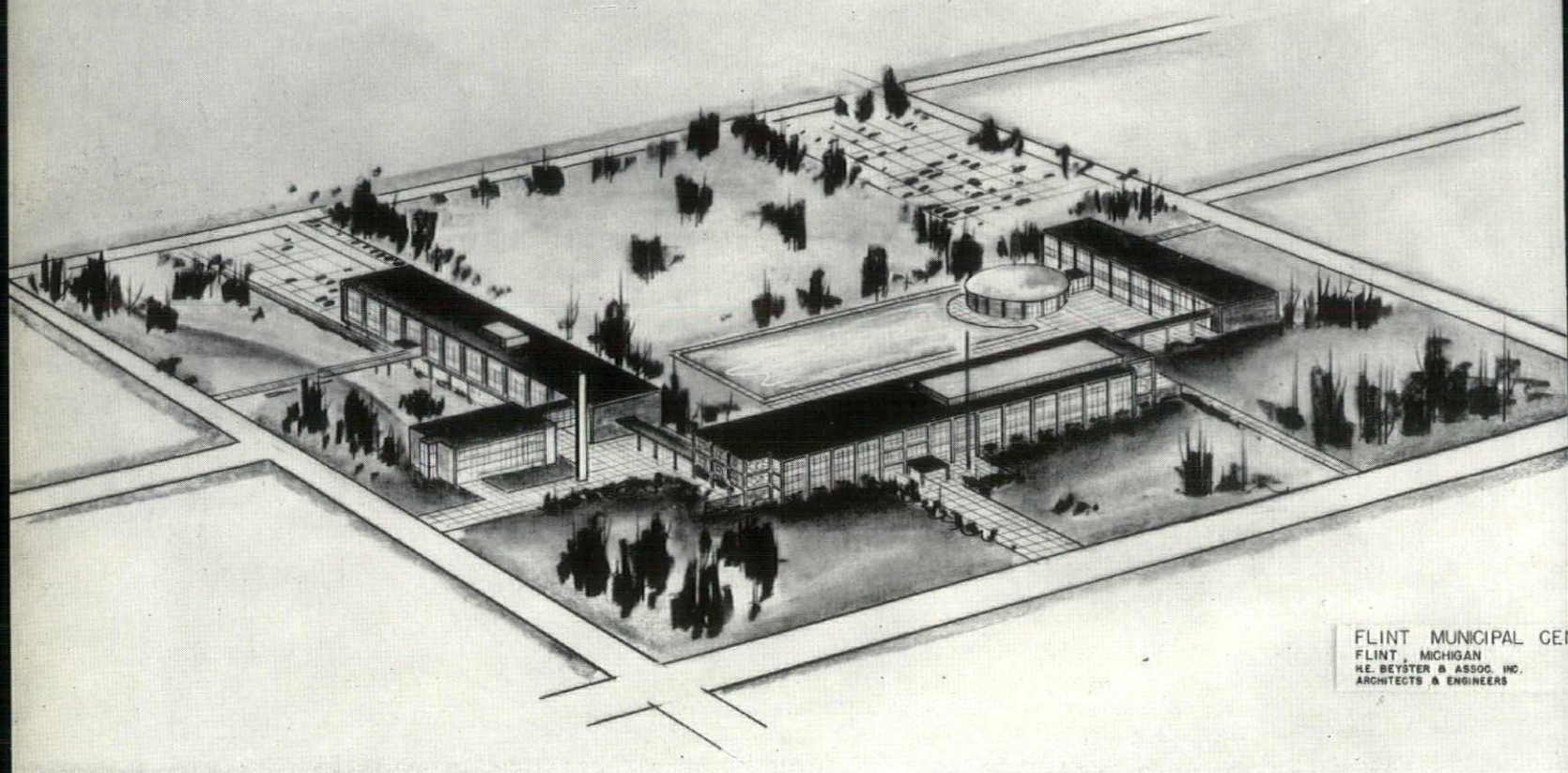
The main auditorium of this church building will seat approximately 155 people and accommodate 75 in the Sunday school. Also provided is a nursery room, a reading room which will serve a dual purpose as meeting place for the Governing Board.



Left:
Lynn Hospital
Lincoln Park, Michigan

This is a 100 bed private hospital and includes an air-conditioned nursery, operating and delivery suites. The construction cost for this three-story building was \$650,000.





Flint Municipal Center Flint, Michigan

Below, left to right:

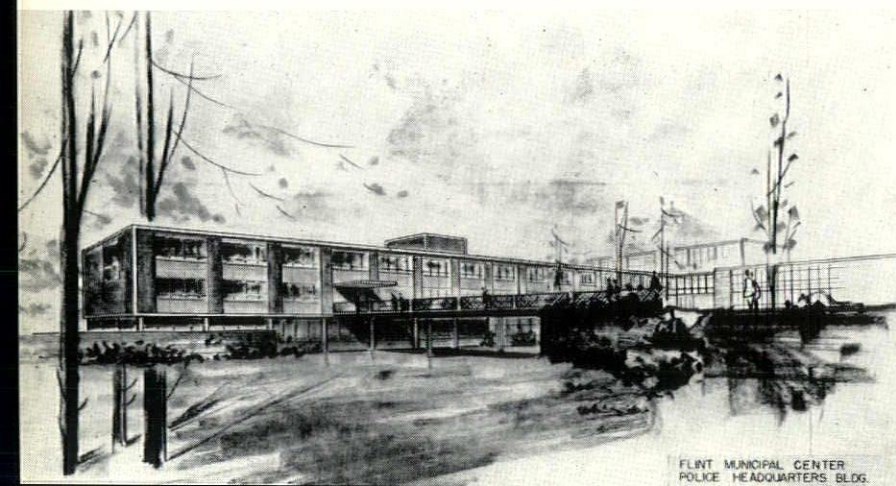
Police Headquarters Building

City Hall

Municipal Courts Building

Public Health Center

City Hall—Public Health Center

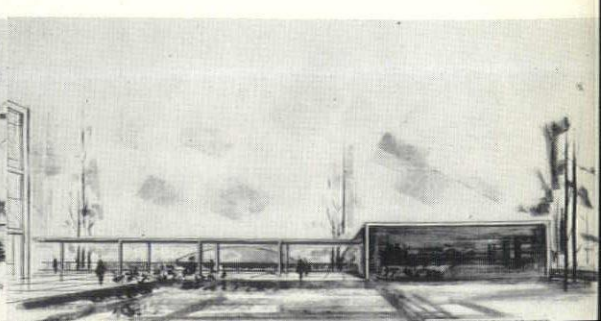
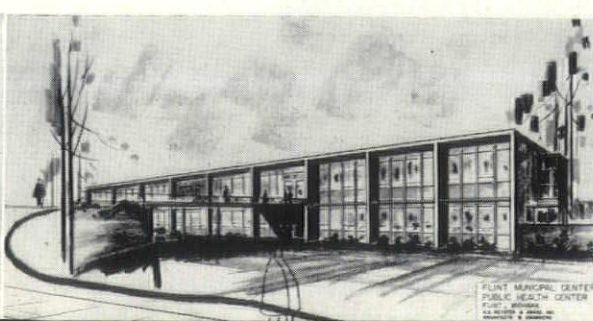
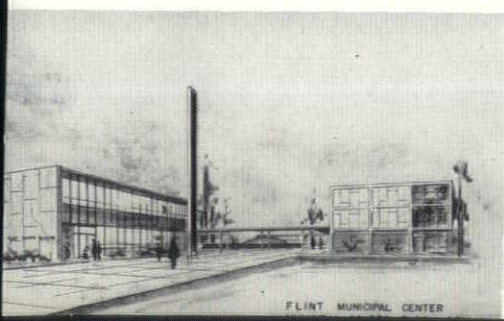




FLINT MUNICIPAL CENTER
FLINT MICHIGAN
H. E. BEYSTER & ASSOC. INC.
ARCHITECT & ENGINEERS

A new civic center for the City of Flint, Michigan, with an overall budget of \$6,000,000 has been designed by H. E. Beyster & Associates, Inc.

An interesting feature of this project is the utilization by the architect of an unusual site. Following the natural contours of the sloping terrain, entrances to the different levels of the buildings are provided directly from the various elevations. Buildings included in this project are the City Administrative offices, a police department and jail, courts, a public health building and a 250 seat auditorium.



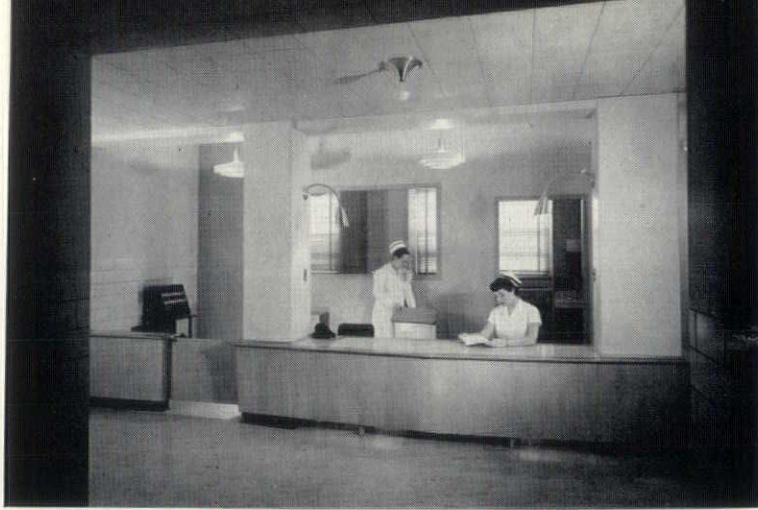


Herman Kiefer Hospital Addition
Detroit, Michigan

At a cost of \$1,940,000, the City of Detroit has 252 additional hospital beds for its tubercular population. This gives Herman Kiefer a total complement of 1200 beds with all of the services necessary to carry on an excellent program. The per-patient facility investment in the addition is approximately \$7700 and includes a "bonus" in the form of an additional fifth floor which is completely roughed-in for 88 future patient beds. The architect has framed for a future sixth floor if the demand develops.

The T-shaped building of reinforced concrete has brick and masonry for exterior. This blends with the weathered brick of the original building giving it an appearance of being "new" but strictly "in keeping" with the older buildings.





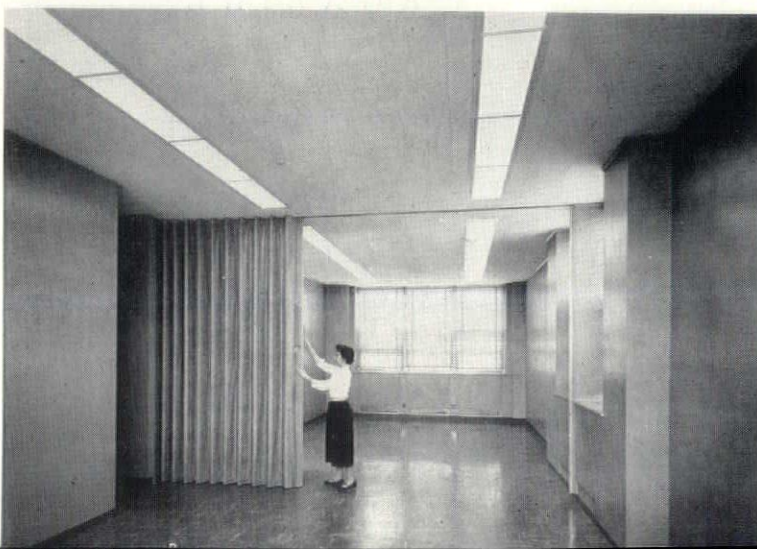
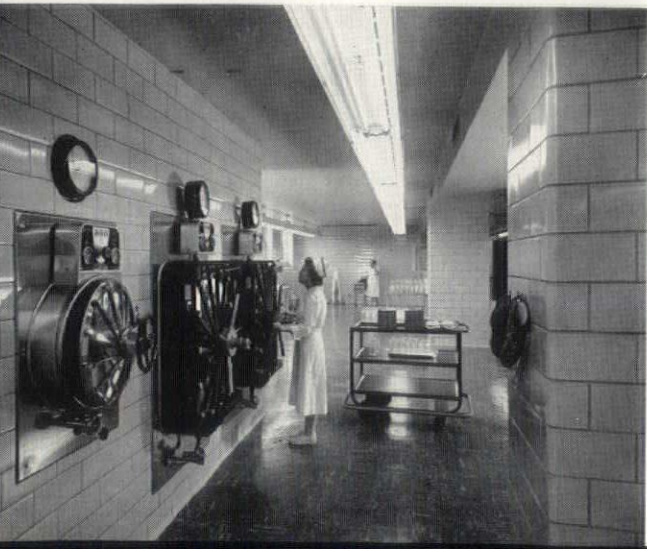
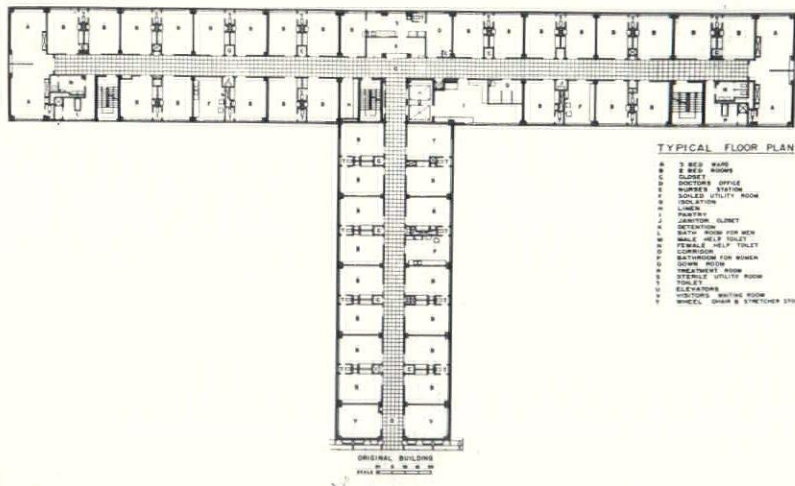
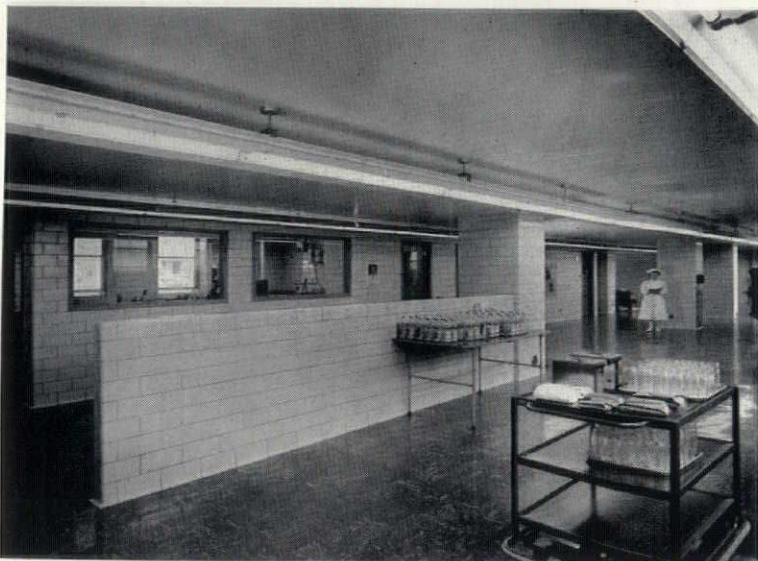
Central Nursing Supply
Linen, Glove and Needle rooms
Occupational Therapy workshops
Nurses Training Facilities
Flexible classrooms
Locker Rooms
Storage and Mechanical Equipment

Administration
Laboratories
Diagnostic facilities
Dark Room
Conference Room
Blood Bank

Three nursing floors are individually equipped with treatment rooms and a centrally located nursing station. Each floor has a serving kitchen. Sterile utility and sub-utility rooms. Each floor has a pair of visitors' rooms.

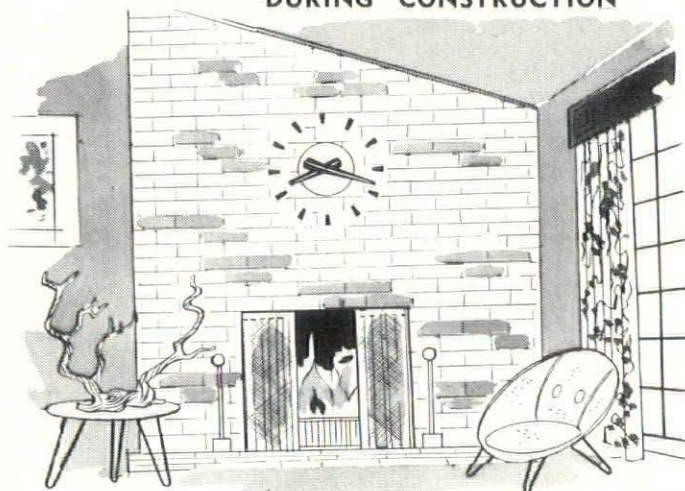
This is the "bonus" floor. It is completely serviced and ready for room partitions.

A future possibility with all provisions made in original design to take care of this potential.



it's TIME to Consider...

DURING CONSTRUCTION



STYLE 040-C SKELETON CLOCK
FRONT MOUNTING

the use of CLOCKS for Functional Beauty!

Today more than ever before skeleton clocks are used by progressive architects and builders to provide new beauty... combined with usefulness so desirable to both contemporary and traditional style building. Plan your clock placements during construction to insure easy installation.



National skeleton clocks are shipped ready to install. All the units required are conveniently packaged in a time saving kit.



STYLE B

Pictured here are just three of the many skeleton face styles available from National. Hands and figures can be obtained in almost any finish to match the surrounding decor. Write for complete details.



STYLE F

NATIONAL TIME & SIGNAL CORPORATION

21800 WYOMING AVENUE

DETROIT 37, MICHIGAN

FIRESIDE PRINTING & PUBLISHING COMPANY

MAGAZINE
AND
PROGRAM
SPECIALISTS

2282 EAST FOREST AT CHENE
DETROIT 7, MICHIGAN

TEMPLE 2-4900

"So That's How You Do It!"

In the past 31 years,
how many times have you
said this to a

HARTY representative
when he told you the
HARTY way of doing it?

When you want to know
the latest and best
way of doing a door job,
call TOWnsend 8-6990,
and we will get a man out
to show you the HARTY way.

WHERE DEPENDABILITY IS PARAMOUNT,
SPECIFY HARTY DOORS

R. V. HARTY COMPANY INCORPORATED

1433 Sloman Avenue, Detroit 11, Michigan
TOWnsend 8-6990

MOEN



HANDLE CONTROL MIXING FAUCETS

These unique faucets put an end to "faucet fiddling."

■ Finger-tip action of the single handle selects and gives hot, cold or any "in-between" temperature water—at any desired rate of flow. Change volume without changing temperature, change temperature without changing volume or dial the desired temperature before turning the water on. Moen faucets are available for kitchen and lavatory sinks; tub, shower or combination in a variety of types for every purpose.

Write, phone or wire for literature and your nearest wholesaling source

T. L. OSBERGER COMPANY

10226 WOODWARD AVE. • TALBOT 8-2600 • DETROIT 2, MICH.

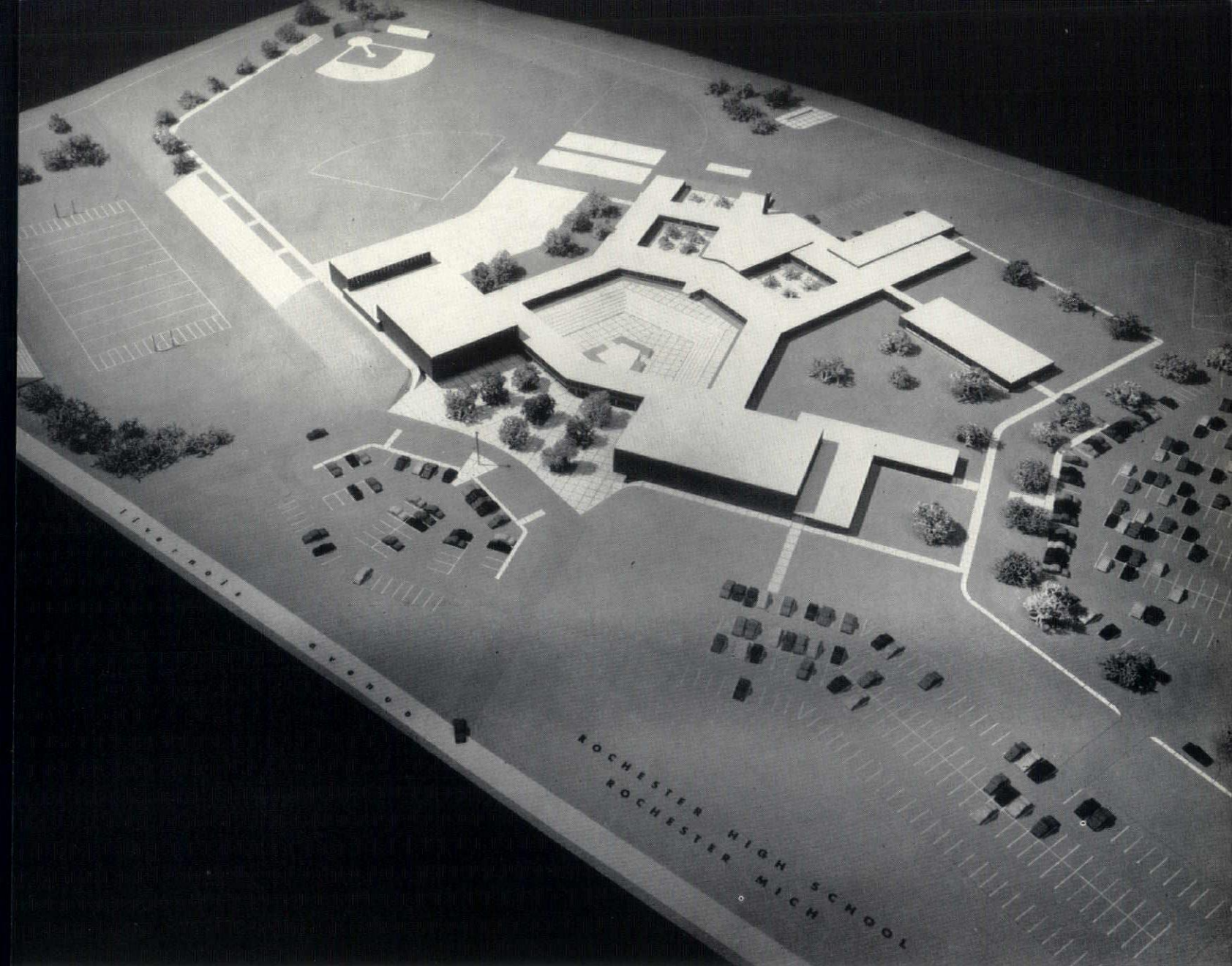
MEMBER MARBLE INSTITUTE OF AMERICA, INC.



THE DETROIT MARBLE CO.

MARBLE CONTRACTORS
Domestic & Foreign

9128 Woodward Avenue, Detroit 2
TRinity 3-9553



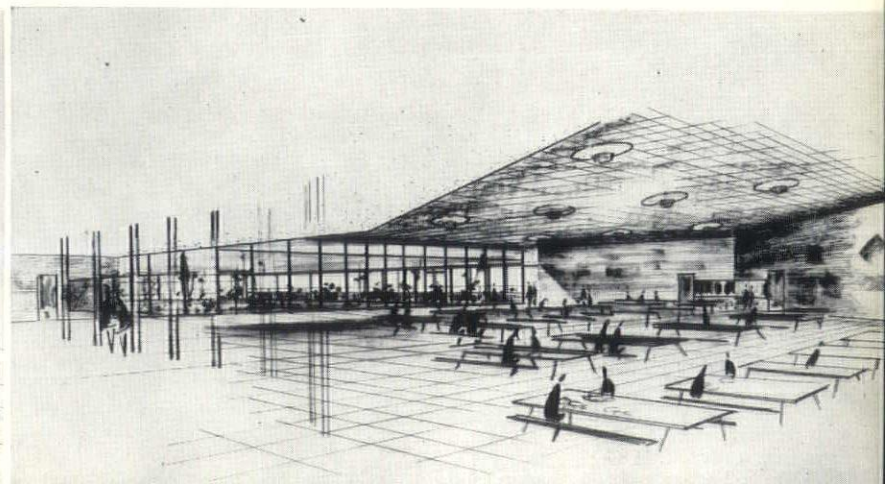
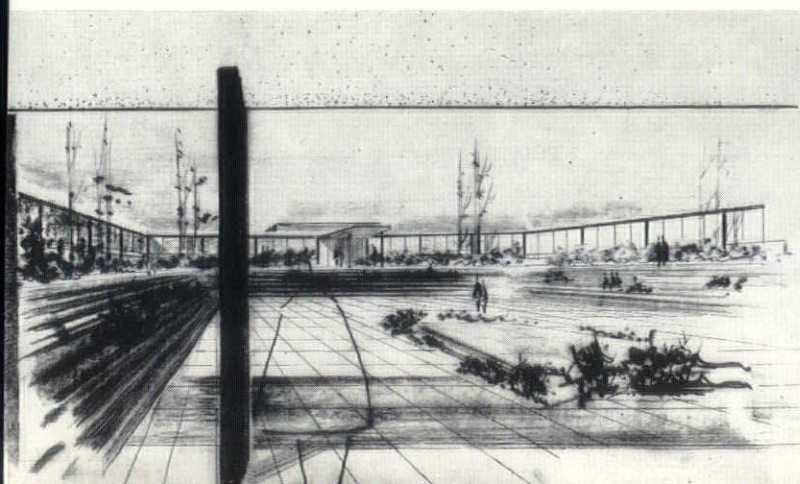
Rochester High School
Rochester, Michigan

This new high school will ultimately serve approximately 1600 pupils and carries an estimated budget for the complete project of \$2,500,000.

BELOW:

Left: View into Ampitheater

Right: View into Cafeteria & Student Center



H.M.C.

HURON MASONRY CEMENT

designed *for* uniformity
quality
permanence

HURON

PORTLAND
CEMENT
COMPANY

VAMPCO

All Aluminum Windows



CADILLAC GLASS CO.

Valley 1-7200

11801 EAST VERNOR HIGHWAY
DETROIT 14, MICHIGAN



Asphalt Surfaced Parking Area

ASPHALT PAVING is the modern type of pavement now used for parking areas, access roads and driveways. Its economy and durability make it the preferred type of paved surface. Architects and engineers now specify ASPHALT PAVING for modern paving needs.

For Quality Work Use Only the Contract Method
Through Experienced, Pre-Qualified Contractors

For Information and Specification Recommendations Write:

**Michigan Asphalt Paving Association
Incorporated**

701 PRUDEN BUILDING
LANSING 16, MICHIGAN

1000 W. GRAND BLVD.
DETROIT 8, MICHIGAN



THE OLDEST TITLE
INSURANCE COMPANY
IN MICHIGAN

IN
**DETROIT
AND
MICHIGAN**

TITLE INSURANCE on
both Owner's and
Mortgagee's Policies
anywhere in Michigan.

ABSTRACTS prepared
and extended on lands
in Wayne, Oakland and
Macomb Counties.

TAX reports prepared
on condition of taxes
to real property located
in metropolitan Detroit.

ESCROW Agent in all
matters involving real
estate transactions.

**ABSTRACT AND TITLE
GUARANTY COMPANY**

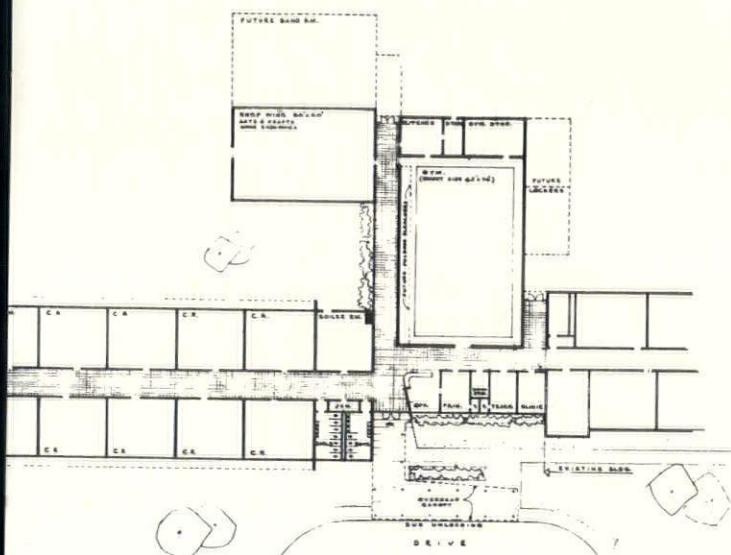
735 GRISWOLD • OPPOSITE CITY HALL • WO 3-5810

5 BRANCHES TO SERVE YOU



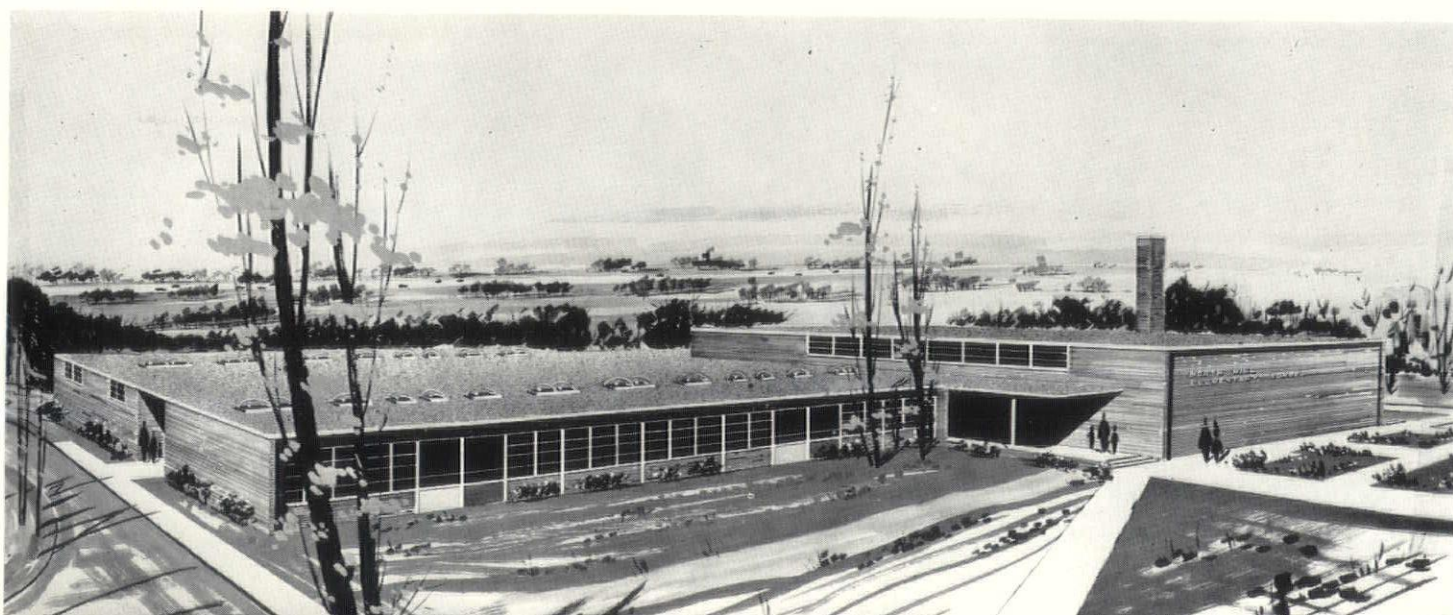
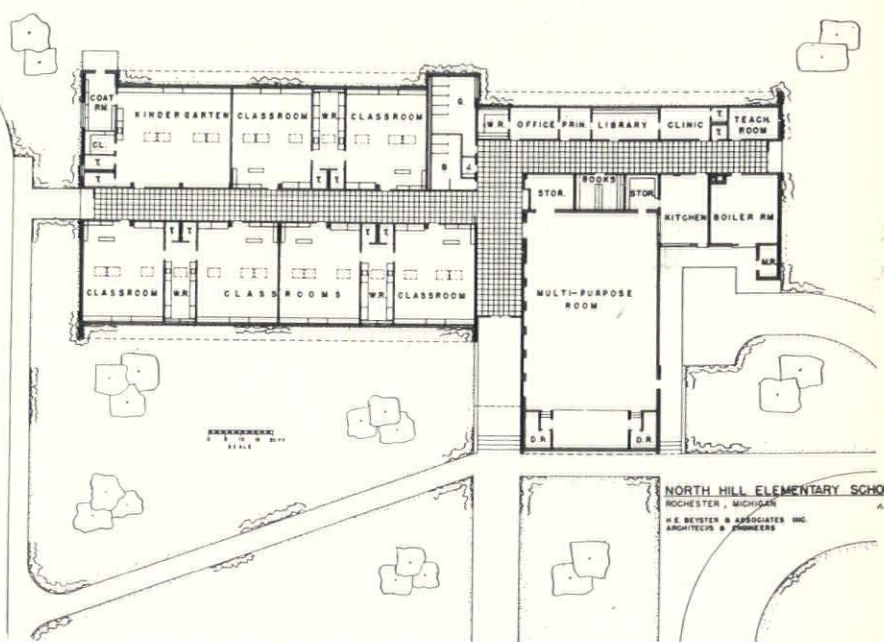
Above and at Left:
Jolman School Addition
Muskegon, Michigan

This project includes 12 classrooms, a general science room, a shop, a junior gymnasium including storage, kitchen and service areas.



Below and at Right:
North Hill Elementary School
Rochester, Michigan

This school plan was developed by working closely with a committee of citizens and teachers. In the first unit of the school are a kindergarten, six classrooms, library, offices, teachers' room and a multi-purpose room with kitchen facilities and in-wall tables for a hot lunch program. A future addition is planned of six classrooms. Interesting feature and result of the cooperative study is the unique work areas. These contain counters, sinks, planting areas, storage space and are placed between the classrooms.



RAY T. LYONS CO.

SALES REPRESENTATIVES

Our 26th Year

WASCO PRODUCTS, INC.

Skydomes
Ventdomes
Pyrovents
Flashings

MIAMI-CAREY

Medicine Cabinets
& Accessories

MANKATO STONE COMPANY AND ADAM GROTH COMPANY

Fabricators of
Mankato Stone

CRAB ORCHARD STONE COMPANY

Veneer
Flag
Spandrels
in Tennessee Stone

VERMONT STRUCTURAL SLATE CO.

Colored Slate
Flag
Stairs
Spandrels

15115 CHARLEVOIX AVENUE, GROSSE PTE., MICH.
VALLEY 1-7822 • VALLEY 1-7823

W. F. Schaibley Co.

ELECTRICAL CONTRACTORS

FOR
LYNN
HOSPITAL
LINCOLN PARK
MICHIGAN

14618 Schaefer Highway
Detroit 27, MICHIGAN
Vermont 7-1544

PAGEL'S

INCORPORATED

Photo Engravers

for

Monthly Bulletin

641 MONROE AVENUE
DETROIT 26, MICHIGAN
WO. 1-0472 — 1-9239

MEMBER



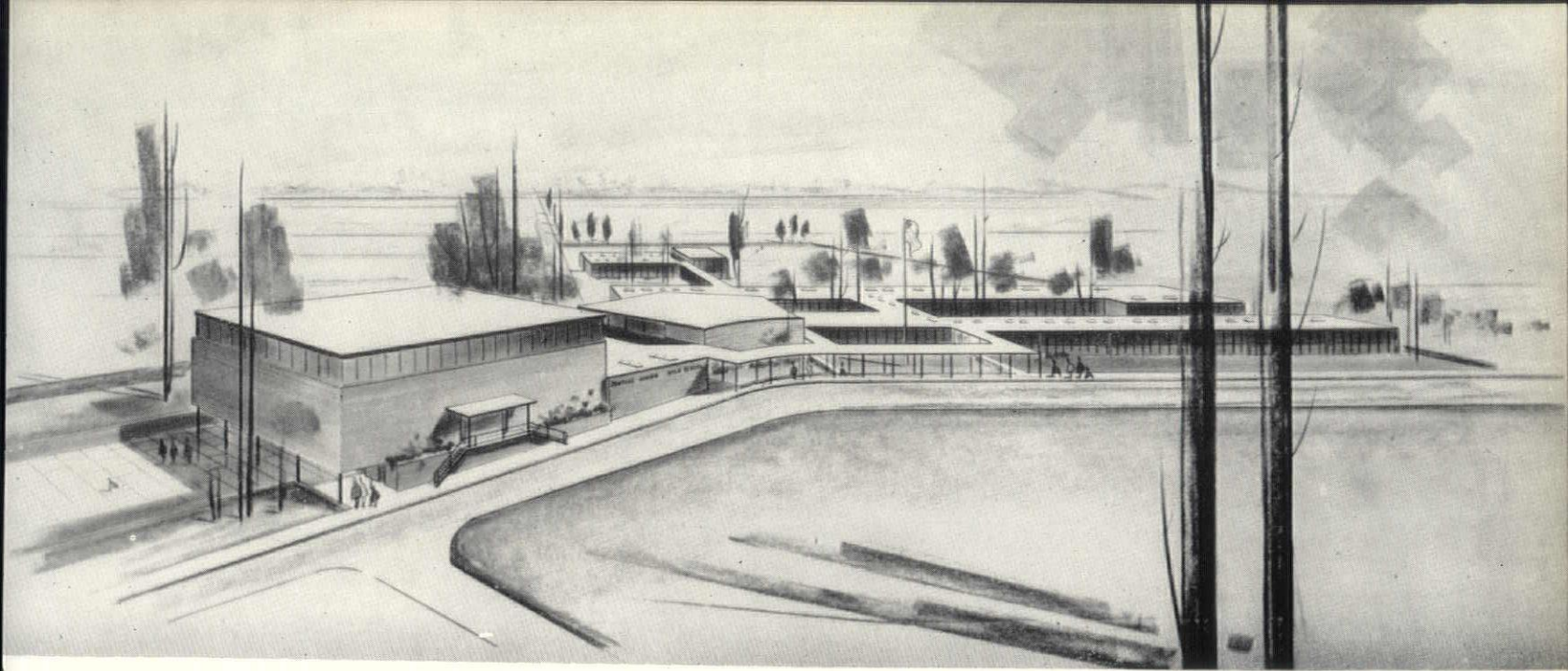
MARBLE INSTITUTE OF AMERICA, INC.

WOLVERINE MARBLE CO.

DOMESTIC & IMPORTED MARBLES FOR ALL FINE BUILDING PROJECTS

SERVICE
SINCE
1923

OFFICE & FACTORY
14269 FLEMING AVE.
AT DET. T.R.R.
DETROIT 12, MICHIGAN
TOWNSEND 8-7113

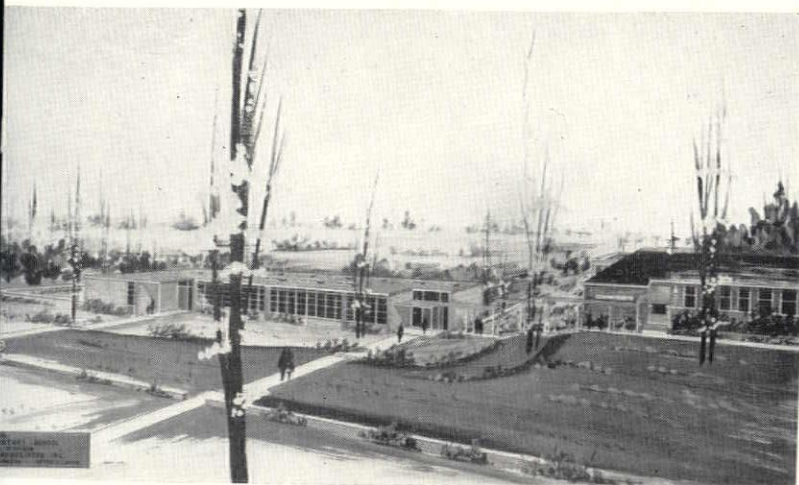


Pontiac Daily Press Photo

Pontiac Junior High School

Pontiac, Michigan

Pupil capacity will be 600 when the building is occupied in early 1956.
Ultimate capacity is 1,000.



Above:

Daniel Whitfield Elementary School Addition

Pontiac, Michigan

5 classrooms and two kindergartens.

Above Right:

Lake Street School

Pontiac, Michigan

A primary school including 2 kindergartens and 8 primary classrooms.
An upper elementary wing will be added in the near future.



Danny did...

Denny didn't...

MORAL: It pays to insist on *ALFOL* Aluminum Foil Insulation. No other type can guarantee such mountain-cool summer comfort. Saves fuel in winter, too. Whether shopping for a new home or insulating your attic... demand the finest. Demand ALFOL!



INVESTIGATE BEFORE YOU INSULATE

Reflective Insulation Company

2783 E. Grand Blvd.

TRinity 5-4220

On Top Since '79
J. D. Candler
ROOFING COMPANY, INC.
551 E. VERNOR HWY. • DETROIT
D. W. CANDLER • DR. C. L. CANDLER

ROOFING AND
SHEET METAL
WORK
INDUSTRIAL AND
RESIDENTIAL
NEW ROOFS—
ASPHALT
SHINGLES
COMPLETE
ROOFING AND
SHEET METAL
REPAIRS FOR
OVER 72 YEARS



D. D. BURFORD & CO.

Furnished

Cupples Aluminum Windows

—Series 500

Hospital Hopper Vent Type

For Herman Kiefer Hospital

Detroit, Michigan

and

Ware Laboratories

Aluminum Weather Stripped

Projected Windows

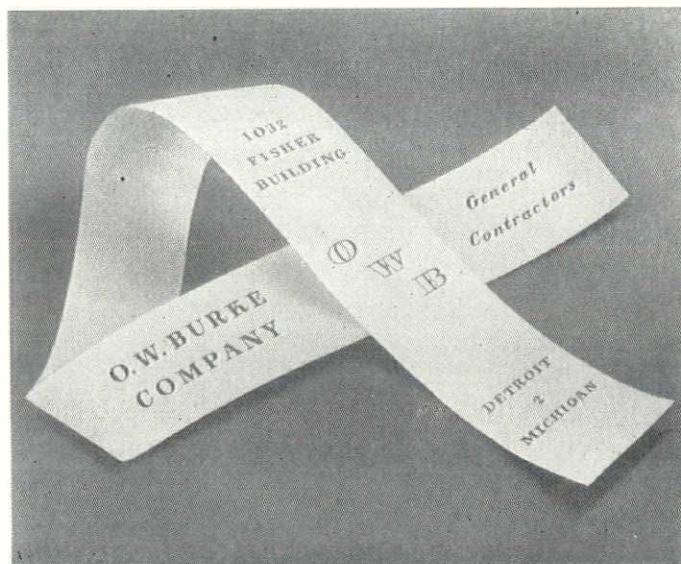
for

Lynn Hospital

Lincoln Park, Michigan

15616 FENKELL AVE., DETROIT 27, MICH.

BRoadway 3-9550



H A M I L L

ELECTRIC COMPANY

Electrical Contracting Engineers

For Herman Kiefer Hospital

Detroit, Michigan

2921 EAST GRAND BOULEVARD

DETROIT, (2) MICH.

TRinity 1-2650

Quality With Lasting

Beauty • Texture • Color

FACE BRICK

★ STANDARD

★ ROMAN

★ NORMAN

WINCO ALUMINUM RIBBON

AND PROJECTED SASH

PC GLASS BLOCK

BEFORE SELECTING YOURS CALL—

CENTURY BRICK CO.

14910 Linwood Ave.

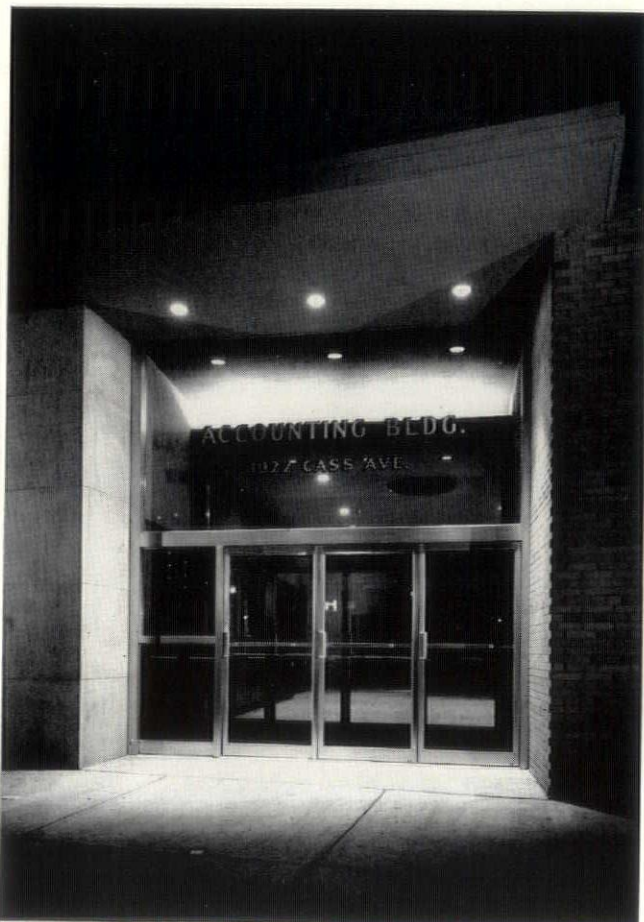
Detroit 21, Michigan

UNiversity 1-8200



**Michigan Bell Telephone Company
General Accounting Building
Detroit, Michigan**

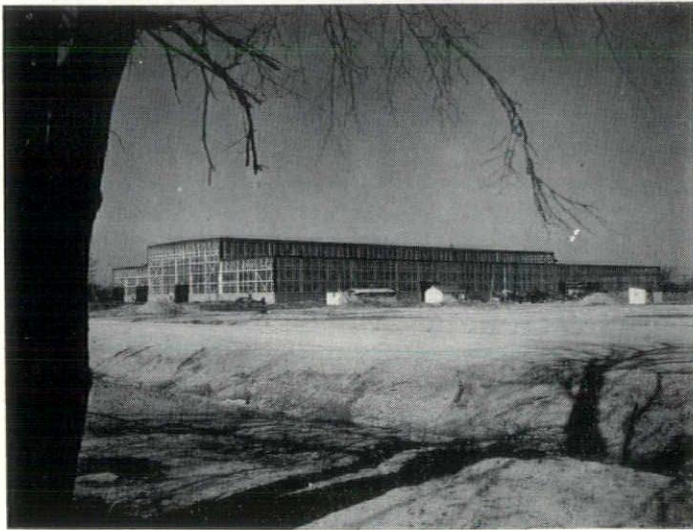
This assignment involved converting an abandoned creamery building into a modern office structure. A six-story service addition was added to the old structure to house elevators, lobbies, rest rooms, storage space and some additional office areas.



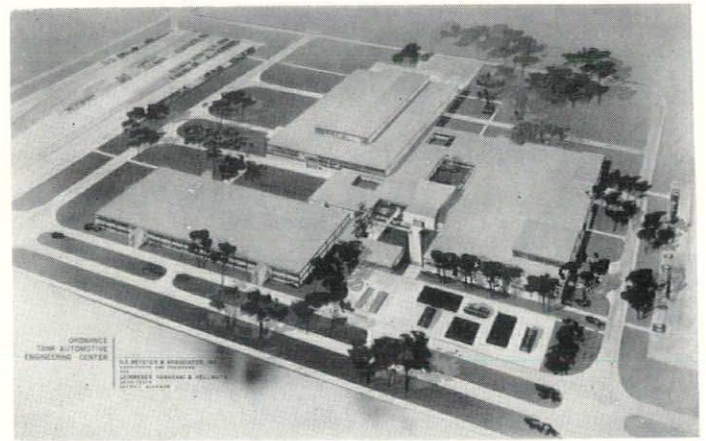
Below: BEFORE

Above: AFTER





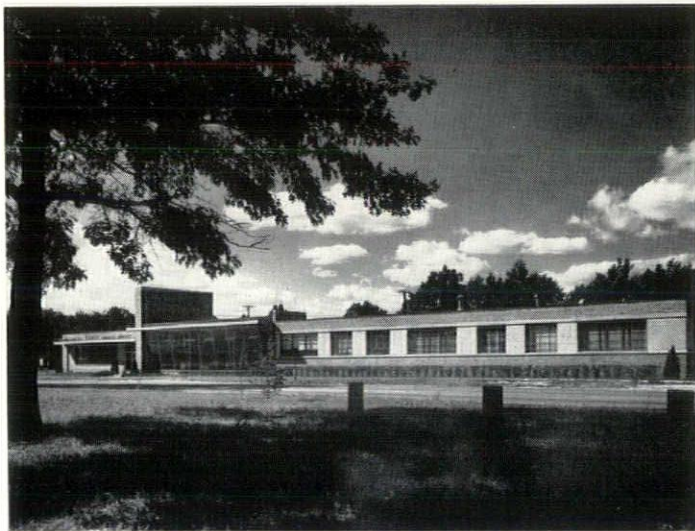
Detroit Arsenal Test & Teardown Building
Detroit, Michigan



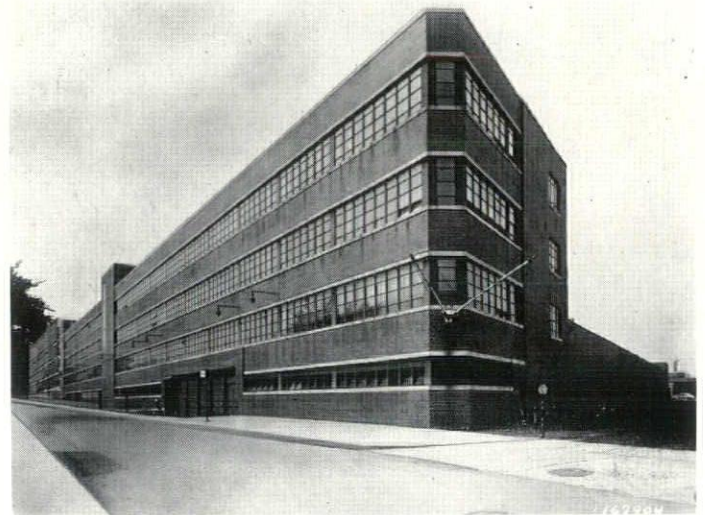
Ordnance Tank-Automotive Engineering Center
Detroit, Michigan

Under the direction of the Detroit District Engineers, Corps of Engineers, U. S. Army, H. E. Beyster & Associates and Leinweber, Yamasaki and Hellmuth, Associated Architects and Engineers, have developed a multi-million dollar research laboratory and test facility for ordnance vehicles and components.

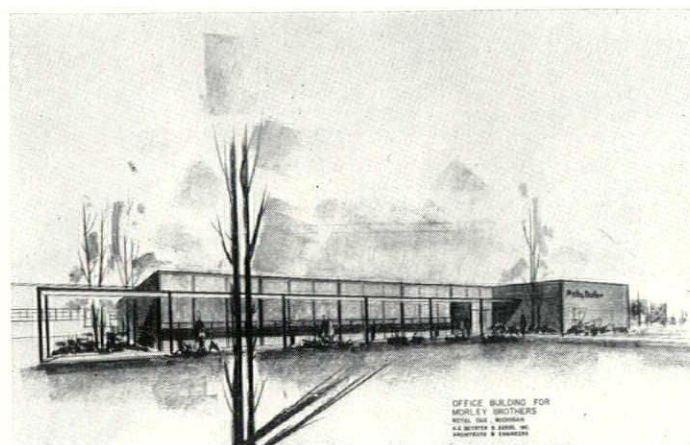
Included in the program are a tank test and tear down building, air engineering and office building, a materials laboratory, and air auditorium and cafeteria. Also included is a test cell facility, containing engine test cells and a large hot test cell for testing and automatically recording vehicles, engines and components under controlled air and temperature conditions.



Hartz Pharmaceutical & Surgical Supplies
Detroit, Michigan



Packard Motor Car Co.
Detroit, Michigan



Morley Brothers Office Building & Warehouse
Royal Oak, Michigan



Northland Regional Shopping Center
Detroit, Michigan

H. E. Beyster & Associates, as Associated Engineers with Victor Gruen & Associates, Architects, developed the mechanical and electrical phases for this million square foot regional shopping center which features the J. L. Hudson Co.'s Northland Center branch store and approximately eighty other commercial firms.

Consultative Services

H. E. Beyster & Associates, Inc. in an addition to its architectural and engineering functions, performs many services for industry including master planning, production layouts, power surveys, structural analysis and building appraisals.

In many foreign countries, including the Phillipines, India, Cuba, and Mexico, engineers and economists of H. E. Beyster & Associates, have contributed to the economic development and technical progress. Economic resource surveys, civil works engineering, industrial programing have been afforded by the firm.

PORCELAIN • STAINLESS • ALUMINUM

NEON *and* METAL LETTERS
Long SIGN CO.
6209 HAMILTON AVE.
DETROIT 2, MICH.

THE DUNN - RAINEY COMPANY

Manufacturers

"DURA-GLAZE" ELASTIC GLAZING COMPOUNDS
"DURA-SEAL" ELASTIC CAULKING COMPOUNDS
METAL AND WOOD SASH PUTTY

4461 W. Jefferson Ave.
Detroit 9, Michigan

Telephone TA. 5-7156

—
ROMANY

GLAZED WALL
& FLOOR TILES
—

R. C. FAULWETTER

Representative

UNITED STATES CERAMIC TILE COMPANY
THE SPARTA CERAMIC COMPANY

Detroit, Michigan

936 Book Building

WOodward 1-2321

—
SPARTA

CERAMIC MOSAIC
& PAVERS
—

SMITH-MAYNARD ELECTRIC

electrical contractors and engineers

Member
Michigan Society
of Professional Engineers

1108 NORTH WATER STREET
BAY CITY, MICHIGAN
BAY CITY 3-6516

M. DEN BRAVEN

established 1912

SHEET METAL
VENTILATING
AIR CONDITIONING

9080 ALPINE AVENUE
DETROIT 4, MICHIGAN
WE. 3-7494-5-6



**JOHN H.
FREEMAN
COMPANY**

Distributors

**BUILDERS'
HARDWARE**

**CONTRACTORS'
SUPPLIES**

3627 Cass at Brainard
Detroit 1, Michigan
TEmples 1-6760

saginaw valley chapter

On Tuesday, June 14th, the members of the Saginaw Valley Chapter, A.I.A., were invited to Midland by Alden Dow. Fifty-four members and their guests were present for this pleasant occasion. The group was conducted through St. John's Lutheran Church and the Grace Dow Public Library by Mr. Dow. Both of these buildings are recent accomplishments of the Alden Dow and Associates offices. The MSA film, "Designs for Better Living" was shown in the auditorium of the library with the members being urged to arrange further showings of the film at any club or civic meetings in their respective areas. Preceding and following the film, the accoustical fineness of the auditorium was demonstrated with the playing of high fidelity recordings over the audio installations. During this musical presentation, the lighting possibilities of the stage were effectively used to illustrate the wide scope of color play available.

A buffet supper was served to the members at the Dow residence, this being a most enjoyable event that stems from the warm and enthusiastic hospitality of Mr. and Mrs. Dow. Before dinner, cool drinks

were especially welcome as the day had turned warm. The vistas viewed from the high-up porch at the Dow house are particularly beautiful at this time of year. The architects had a fine time with the conviviality and shop talk while slaking their thirsts and enjoying the lagoon views.

No formal business meeting was entertained by Chapter President Fraser but several items of general interest to the members were discussed during the evening. It was suggested by Sam Allen of Saginaw and Charles Jones of Flint that efforts should be made to charter a ship large enough to take members and their wives to the Mackinac Island Conference in August. This idea received enthusiastic response and President Fraser appointed the two sponsors to further investigate the possibilities of securing such transportation. As the only vessel large enough for such charter are in Detroit, it was suggested that the Detroit Chapter be consulted and a joint effort be aimed at "going to Mackinac by water." The dinner gathering broke up at 10:30 and another fine time was had by all at the Dows'.

michigan items

J. WARREN PLATNER, A.I.A., of Birmingham, Mich., has received the Advanced Research Award under the Fulbright Program. Last month he received, also, the Rome Prize for architectural research. The two grants provide about \$10,000, a villa in Rome and studio for research.

The Rome Prize came through recommendations of the Board of Associated Research Councils in Washington, D. C.; the Fulbright Award through fellow architects and educators throughout the U. S. He submitted exhibits of projects on which he had worked for the offices of Eero Saarinen & Associates, Architects, and Smith, Hinchman & Grylls, Inc., Architects and Engineers.

Mr. and Mrs. Platner and their four children will leave for Rome in October where they plan to be for nine months, after which they will travel in Europe for three months while Platner concludes his research program on European architecture.

PARTNER WANTED—Architect or Engineer interested in Borings and Soil Testing. Midwest Testing Laboratories, 18720 Plymouth Rd., Detroit 28. Clifford Hause, Pres., BRoadway 3-1620.

PROFESSOR RALPH W. HAMMETT, A.I.A., of the College of Architecture and Design, University of Michigan, recently saw completed the new building for the Lutheran Student Foundation, in Ann Arbor, for which he was architect.

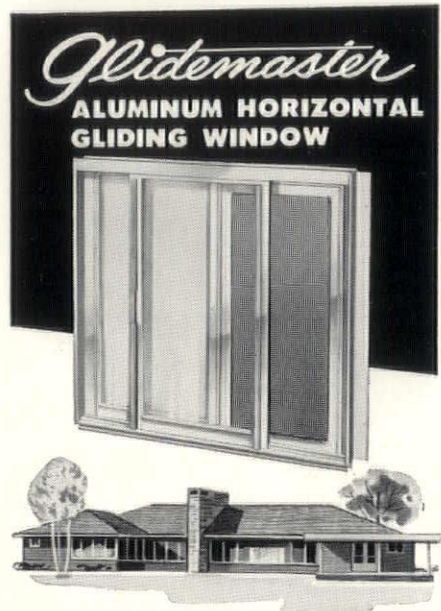
In addition to receiving acclaim in the Ann Arbor newspapers, on the occasion of the dedication ceremonies for the structure which will be used as a chapel for the Lutheran Student Club, the Lutheran Students' year book was dedicated to architect Hammett.

At the dedication ceremonies, contractor E. H. Whitman turned over the keys to the building to professor Hammett, who, in turn, presented them to Dr. Henry Yoder, the student pastor.

HARRY M. DENYES, A.I.A., announces that henceforth his architectural practice will be conducted from the offices of O'Dell, Hewlett & Luckenbach, Architects, 950 N. Hunter Blvd., Birmingham, Mich. His new telephone number is Midwest 4-8508.

The move is being made, Denyes states, to utilize the facilities of a larger organization and provide a broader base of operation.

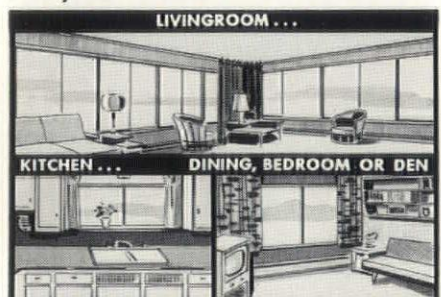
Only window **today**
that's designed and
engineered for
tomorrow's
modern living!



only window today
with all these features—

- New V-shape twin interlock for perfect weather seal
- needle roller-bearings on stainless steel pins for permanent feather-glide
- streamlined "invisible" handle with automatic tamper-proof bolt-lock
- double-glazed—no storm windows needed
- built-in rust-proof aluminum screen
- Lifetime wear due to heavy extrusions, double I-beam sill, integral jamb flanges and fin.

Glidemaster
... your window for tomorrow's



Mail Coupon for } **WHIZZER PRODUCTS CO.**
FREE Brochure! } 350 S. Sanford, Pontiac, Michigan
Send BROCHURE on GLIDEMASTER Windows.

(NAME)

(NUMBER - STREET)

(CITY - ZONE - STATE)

ARTHUR K. HYDE, F.A.I.A., is chairman of a local committee for The American Architectural Foundation, a national organization with the goal of raising \$1,000,000 through the architectural profession, the income from which is to be used to further research in the field of building materials and methods.

Working with Hyde are Lyall H. Askew, Robert F. Hastings and Talmage C. Hughes.

MALCOLM R. STIRTON, A.I.A., chairman of the committee on relations with governmental agencies, Detroit Chapter, The American Institute of Architects, has been named the Chapter's representative on a special school building committee, it is announced by Suren Pilafian, Chapter president.

Purpose of the committee, headed by dean C. E. Erickson, of the school of education, Michigan State University, is to prepare a service program for local boards of education in connection with their proposed building projects, Pilafian said.

THE JOINT WILLOW RUN AIRPORT ZONING BOARD, composed of representatives from the Wayne and Washtenaw County Boards of Supervisors, the Board of Regents of the University of Michigan, and the Michigan Aeronautics Commission, has adopted the Willow Run Airport Zoning Ordinance, it is announced by Darrell S. Downey, secretary of the Board.

Henceforth it will be necessary for property owners contemplating building within the area to secure building permits from the Board, Downey said, and he added:

"The ordinance will regulate the height of structures and objects of natural growth within ten miles of Willow Run. A maximum height limitation of 500 ft. above established elevation of the airport is established in the outer zone (located approximately 4 to 10 miles from the airport). The most severe restriction to be imposed anywhere is 25 ft. above ground, and this restriction would apply only in a few locations adjacent to the airport in line with the runways. The height limitations become less severe as the distance between the structure and the airport increases."

Further information on the new zoning ordinance may be obtained from Downey at Capital City Airport, Lansing, Mich.

WILLIAM H. ODELL, A.I.A., announces the removal of his architectural offices from 515 Hammond building to 1215 Dime building, Detroit 26, Mich. The new telephone number is WOodward 2-2699.

Odell, a native Detroit, has specialized in hospitals, schools, commercial and industrial buildings. He is a member of The American Institute of Architects, its Detroit Chapter and the Michigan Society of Architects.

He became registered as an architect in Michigan in 1916, and he is also registered in the State of Florida.

LEINWEBER, YAMASAKI & HELLMUTH, of Detroit and St. Louis, Mo., were architects for the Grosse Pointe University School, prize-winning last word in school design.

Wishing ever to be helpful to our subscribers (both of them), we pass on this morsel from the DAC (Detroit Athletic Club) News:

"The son of one of our members attends the school, but the parents were not fully aware what a complete structure it was until sonny came home on a recent afternoon and solemnly recounted all that happened that day in school:

"I got a star in arithmetic; we played out of doors at noontime; and Bobby Brown threw up in the multi-purpose room."

LOUIS G. REDSTONE, A.I.A., speaking before a recent meeting of the Detroit Chapter on the subject of arts and crafts in architecture, emphasized the importance of an artist or craftsman carrying through his commission in a business-like way, and he added:

"I recall an experience in which a mural was involved and there was a question as to who should do the installation. The artist wrote his specification as follows: 'the artist shall deliver the mural to the premises, and the owner shall hang himself.'"

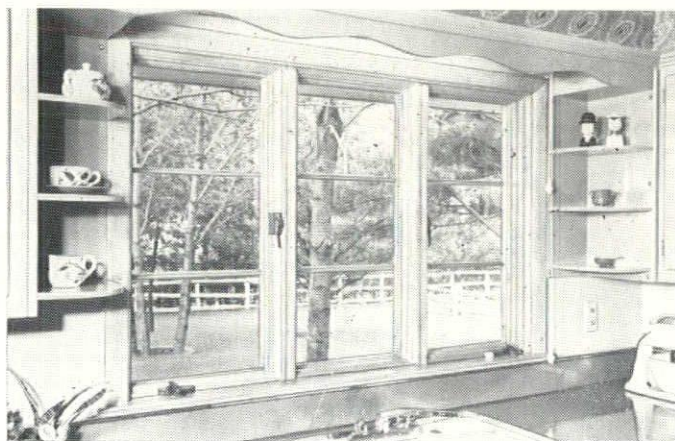
EBERLE M. SMITH, A.I.A., recently returned from a meeting of the National Committee on School Buildings held at Teachers College, Columbia University, in New York.

Smith, a member of the committee, stated that the three-day meeting took up the problem of planning for mentally retarded and physically handicapped children.

The committee also considered the possibility of more uniform ratings on fire insurance for buildings, Smith said, and he added:

"The committee is working closely with the authorities participating in the White House Conference on Schools, which will, no doubt, influence legislation to aid in financing schools and school operations. These conferences are moving forward and will probably culminate in a national conference in Washington this fall."

A Quality Sales Feature for Homes in Every Price Class!



Andersen Windowalls

COMPLETE WOOD WINDOW UNITS

CASEMENT WINDOW UNITS

Cash in on the demand for casements that combine weather-tight construction with beauty of design. Casements are available in two sash widths (1'6" and 1'10"), one light and horizontal light glazing and in picture window combinations. Double insulating glass available on one light casements.

Your retail lumber dealer can give you quick service on Andersen Casements. For complete information, see your dealer or stop at our showroom where all the Andersen Windowalls are on display.



KIMBALL & RUSSELL INC.

WHOLESALE SASH AND DOOR DISTRIBUTORS

2127 FENKELL AVE. DETROIT 38, MICH. UN. 1-3480

A.I.A., Detroit Chapter's Committee on Relations with the Construction Industry is shown here meeting with the A.G.C., Detroit Chapter's Committee on Relations with Architects, at a luncheon in the Recess Club, April 21, 1955.

Seated, reading clockwise, are Joseph N. French, Gustav Muth, Leslie M. Lowery, Maurice E. Hammond, J. N. Savage, Stewart S. Kissinger, John K. Cross, J. W. Armstrong, Victor J. Basso and P. Harsha.

Standing, left to right, are Alfred A. Smith, Paul J. Ketelhut, Carl A. Scheuffler, H. E. Schlessinger, H. G. Butler, H. F. Hartwell, William T. Carter and Raymond C. Perkins.

Cross is Chairman of the A.I.A. Committee, Smith and Savage are Co-Chairmen of the A.G.C. Committee. The Committees hold about eight meetings per year, plus other meetings with sub-trades.



LOUIS W. KLEI II, STUART D. RODGERS AND GEORGE E. THOMAS have been elected to membership in The American Institute of Architects and assigned to the Detroit Chapter, it is announced by Lyall H. Askew, Chapter secretary.

Klei, a 1950 graduate of Lawrence Institute of Technology, has just entered his own practice in Detroit, after serving with George J. Bery, Architect. His grandfather, Louis W. Klei, is also an architect.

Rodgers received his bachelor of science in architecture from Miami University, Oxford, Ohio, in 1947, and he is now in the Royal Oak office of Clair W. Ditchy, F.A.I.A., continuing the practice of the late Lowell M. Price.

Thomas graduated from the University of Detroit in 1942, and after serving with leading Detroit architects, he entered his own practice in April, 1954.

MONTHLY BUILDING COST REPORT JUST ISSUED BY SMITH, HINCHMAN & GRYLLS, INC., ARCHITECTS AND ENGINEERS states that with the building cost index up a little last month and again this month, it appears that one of the small expected rises has actually commenced.

The Report adds:

"This may carry on at an easy pace until late autumn, but without a shooting war, a general labor strike or some other serious calamity, no heavy movement need be expected. A little saving might be made if those contemplating building soon could award contracts within the next few weeks."

Concerning commercial and industrial building, the Report emphasizes that there is no over-building, and it explains:

"Today we have too many old industrial buildings in use which will not be tolerated by workmen or owners in the year 1960. We will need new buildings with better facilities and in better locations."

The Report concludes that practically all other types of buildings are maintaining their good volume and will continue to do so for years to come.

KRIEGHOFF COMPANY

GENERAL BUILDERS

Established 1909

GENERAL CONTRACTORS

for

LYNN HOSPITAL
Lincoln Park
Michigan

and

MORLEY BROTHERS
OFFICE BUILDING AND
WAREHOUSE
Royal Oak
Michigan

6661 FRENCH ROAD
DETROIT 13, MICHIGAN

Industrial • Institutional • Commercial

national architect

official publication, national council of architectural registration boards

OFFICERS:

Fred L. Markham, President, Provo, Utah.
Edgar H. Berners, 1st V-Pres., Green Bay, Wis.

Joe E. Smay, 2nd V-Pres., Norman, Okla.

Walter F. Martens, 3rd V-Pres., Charleston, W. Va.

William L. Perkins, Sec.-Treas., 736 Lucas Ave., Chariton, Iowa.

EXECUTIVE COMMITTEE:

Aforementioned officers and
Charles E. Firestone, F.A.I.A., Canton, O.

COUNCIL BOARD OF REVIEW:

Lucius R. White, Jr., Chm., Baltimore, Md.

Ralph Edward Winslow, Troy, N. Y.

A. Reinhold Melander, Duluth, Minn.

school committee

By Eberle M. Smith, A.I.A.

The A.I.A. National School Building Committee has been quite concerned regarding the difficulties experienced by most architects in obtaining proper bond protection during the construction of a building. They feel that the coming periods of keener competition may increase the difficulties in this respect. And, similarly, they are anxious to make certain that proper insurance is being carried by contractors to protect owner, contractor, and architect.

With the goal in mind of improving the bonding procedure for all the principal participants, the School Building Committee met with several men who are authorities on this type of insurance. Those who took part in the discussion included Mr. Joseph Wallen of Marsh & McLennan, insurance agents; Mr. Albert L. Carr, Vice-President of National Surety Corpora-

tion; Mr. David Cohen of Casualty and Surety Companies, Associated; Mr. Burt Knowles of the Associated General Contractors; and Mr. William Stanley Parker, F.A.I.A., Chairman of the A.I.A. Documents Committee.

It was agreed that insurance should protect contractors as well as owners, that the Subrogation Clause as recommended by the Michigan Society of Architects is desirable, and insurance should, in general, be taken out by the owner, naming all prime contractors as called for in General Conditions, Article 29. It should include extended coverage and perhaps vandalism, paid for by the contractor. Partial occupancy by owner should be approved by the bonding company and insurance company, or better still a provision should be included in contract documents so as to make original bonding documents cover this. The consensus was that the inclusion of A.I.A. General Conditions in all specifications is desirable.

It was urged that higher limits on insurance be used to take care of the increasing size of judgments being handed down in court cases, though it was pointed out that certain small jobs could use lower coverage. Some of the participants in the conference reported cases where the architects were held liable for accidents when they tolerated careless construction or poor safety precautions.

The correct form of insurance is the **Builder's Risk Completed Value**. This policy is written for the total value of the proposed construction and is dated not later than the time the foundations are complete, but at a reduced rate of about fifty per cent of the usual rate. It is the architect's responsibility to see that the owner is notified that he should take out this sort of policy. In reference, see A.I.A. Document 355, the Circular of Information on Insurance Requirements.

It was lamented by the architects that there is no accurate way of obtaining generalized information as to ratings on different types of buildings as determined by fire underwriters while working drawings are in production. The Committee agreed to attempt to initiate effort to overcome this difficulty.

In regard to bonding, apparently there is no better form of bonds than the standard A. I. A. Performance and Labor & Material Bonds. It is well to write bonds for 100% of the contract, for the cost is little higher than for lesser amounts. All bonds were originally developed for private work and those for public work are merely adaptations. The forms of bonds should be included in the specifications. The A. I. A. is opposed to naming or controlling the surety company, but it is felt the owner has the right to approve the surety company.

architects in the news

arizona

SCHOLER, SAKELLAR & FULLER, of Tucson, won the top prize and two second place awards in a five-state regional competition held in Phoenix, by the western mountain region of the A.I.A. The medal award was granted for design of an elementary school at Willcox and cited "architectural excellence irrespective of type." They also received honor awards for their design of the Tucson Clinic Bldg., and the office of Dr. Darwin Neubauer.

The Phoenix firm of Weaver & Drover received an honor award for the design of a tuberculosis wing at the Arizona State Hospital. Fred M. Guirey, was recognized

for his plans for a mausoleum in the state capital.

Two Albuquerque, N. M., firms and one in Boulder, Colo., also were given awards.

california

WAYNE HERTZKA, A.I.A., a partner in the architectural office of Hertzka & Knowles, was elected president of the Northern California Chapter, A.I.A. William S. Allen, a partner in the office of Anshen & Allen, was named vice president. Rex W. Allen of Rosenfield & Allen, secretary; C. Morrison Stevens, treasurer; Bernard J. Sabaroff, of Sabaroff & Dow, director.

connecticut

PHILIP C. JOHNSON, A.I.A., New Canaan, Connecticut was awarded the 1955 Boston Arts Festival Architectural Award for his design of the Administrative Building for the Schlumberger Well Surveying Corp., Ridgefield, Conn. In this same competition, Richard D. Butterfield, A.I.A., West Hartford, Connecticut received one of the twelve Awards of Merit, for his design of the New Preston Elementary School, New Preston, Conn.

illinois

S. A. LICHTMANN, was elected president of the Chicago Chapter, A.I.A. Elected to serve with him were: John R. Fugard, Jr., First Vice-President; Leonard Wayman, Second Vice-President; Ralph S. Stoetzel, Treasurer, and Spencer Cone, Director.

Also at the annual meeting John T. Pirie, Jr., President of Carson Pirie Scott & Co., was awarded an Honorary Associate Membership. Mr. Pirie was cited for his outstanding civic leadership and his service to both the City of Chicago and profession of architecture in making possible the Carson Pirie Scott Centennial Competition. This competition for a plan of the Chicago Loop as it may be 100 years from now re-awakened civic interest in planning for metropolitan Chicago and drew entries from throughout the world.

kansas

KANSAS STATE COLLEGE OF ENGINEERING AND ARCHITECTURE has announced the establishment of the Paul Weigel Foundation, to provide scholarships to worthy students interested in careers in architecture. The announcement was made at a dinner observing the 50th anniversary of the establishment of the curriculum in the Kansas State College School of Engineering and Architecture.

The Foundation was established by former architecture students and friends to honor Paul Weigel, who retired from administrative duties July 1, after heading the K-State department of architecture and allied arts for 31 years.

Establishment of the Foundation was announced by Ernest Cooke, Webster Groves, Mo., a 1932 graduate, and co-chairman of the committee of former students who spearheaded the Foundation drive. Cooke said there would be one scholarship of \$200 available this fall, and more \$200 scholarships will be available for succeeding years from earnings of the fund.

north carolina

NORTH CAROLINA CHAPTER, A.I.A. recently held its first honor awards program and presented certificates to A. G. Odell, Jr. and Associates, Architects for the Bell Home, the Addison Building, and for Double Oaks School. An Award of Merit went to Graves & Toy, Architects for the West Charlotte High School.

ohio

BELLMAN, GILLET & RICHARDS, of Toledo, are associate architects on the \$3,340,000, five-story, 180-bed addition to Toledo Hospital, contract for which has just been let to The Henry J. Speiker Company, of Toledo. Ellerby & Company, of St. Paul, Minn., are architects. Cost of the project ran 10% above estimate, but additional funds have been pledged.

CLIFFORD E. SAPP, has been named executive secretary of the Architects Society of Ohio. In addition to managing affairs of the society generally Mr. Sapp will serve as editor of Ohio Architect, the Society's official magazine.

EARL H. MELLENBROOK, was elected president of the Cleveland Chapter, A.I.A., also elected were Anthony S. Ciresi, vice-president; Miss Lottie B. Helwick, secretary; Austin G. Damon, treasurer; Howard B. Cain, representative of Architects Society of Ohio; Robert Yoder, executive committee.

A BUCKEYE, according to definition, is said to be a hairless nut of no commercial value. So far as this applies to a resident of Ohio, we don't believe a word of it.

oregon

GLENN STANTON, F.A.I.A., 208 S.W. Stark St., Portland 4, Oregon, announces observance of the twentieth anniversary of his individual practice by admission to the firm of Rollin Boles, Keith McGuire and Kingsley Church. New firm name: Stanton, Boles, McGuire & Church.

washington

WASHINGTON STATE CHAPTER, A.I.A. announces the following members as winners in its Fifth Annual Honor Awards Competition:

Bassetti & Morse, two awards; Ralph H. Burkhard; Seth M. Fulcher; Paul Hayden Kirk, two awards; Wendell H. Lovett; Mithun & Nesland, two awards; Paul Thiry, three awards; Waldron & Dietz, Dan Miller, associate; Gene Zema.

Architects, owners and contractors received awards at a Chapter dinner in Seattle presided over by Chapter president Robert L. Durham. The jury was composed of Thomas R. Adkinson, Walter Gordon and Victor Steinbrueck. Honor Awards chairman Robert H. Dietz and Exhibitions chairman Gene Zema announced that the entries would be on exhibition at the Seattle Chamber of Commerce and at Frederick & Nelson's.

Citations of Honor went to Mrs. Henry B. Owen for her contribution to improvement of the school system and school design; to Stanley Chapple for creating a wider appreciation of music and the related arts, and to Harold S. Shefelman for fostering better municipal and regional planning

detroit FIBERGLAS insulation division*

acoustical
and
insulation
contractors

14360 livernois avenue
detroit 38, michigan

* DISTRIBUTORS OF OWENS-CORNING FIBERGLAS CORPORATION

and greater efficiency in government.

Mrs. W. Forrest Goodfellow, president of the Seattle Public Library Board, and John S. Richards, chief librarian received editions on art and architecture, constituting memorials to recently deceased architects John Graham, Sr., William Malis, John Whitney and Arrigio M. Young.

Speaker of the evening was George M. Dean, vice-president of the Seattle Chamber of Commerce. More than 125 attended the dinner.

florida

UNIVERSITY OF FLORIDA'S COLLEGE OF ARCHITECTURE AND ALLIED ARTS is the subject of an editorial in the Orlando, Fla. Sentinel, which states:

"It is the largest of its kind in the South, and the fourth largest in America and is recognized in quality as comparing favorably with the best in the nation. Furthermore, it is one of the most popular with the students. It has a teaching load of 12,250 student semester hours of instruction as compared with 12,300 for the School of Agriculture, 15,750 for the School of Engineering and 6,100 for the School of Law."

Making a plea for replacement of the College's temporary war-time buildings, the paper supports the Florida Association of Architects' request for a \$1½ million appropriation from the State Legislature for this purpose.

The article concludes: "Men who are going to design the buildings of tomorrow in this State should have the inspiration which comes from association with such structures as are to be found at Duke or the University of Virginia."

georgia

JOHN WEEMS, A.I.A., member of the firm of Hallman, Weems and Dukes, was installed as president of the Augusta Chapter, A.I.A. Serving with him during the coming year will be Robert Stephens, vice president; James Chafee, secretary; John Thompson, treasurer; and directors Phil Scroggs and Lyman Hall Robertson.

indiana

PAUL FRANK JERNEGAN, A.I.A., with home offices in Mishawaka, Ind., announces that Barbara Jane Dixon has been named as interior designer for the firm, which also has offices in Chicago, Ill. and Goshen, Ind.

The firm's announcement states: "Miss Dixon has had thorough training in interior design, including studies at Michigan State College (now Michigan State University), and New York School of Interior Design."

minnesota

JOHN LINDSTROM, A.I.A., partner in the firm of Magney, Tusler & Setter, Minneapolis, has been named on the planning committee for the A.I.A. 1957 National Convention in Washington marking the Institute's centennial observance. He will represent the A.I.A. north central region.



DANIEL, MANN, JOHNSON & MENDENHALL, ARCHITECTS AND ENGINEERS have received the 1955 Arcadia Achievement Award for "Excellence in School Design," sponsored by the Southern California Chapter, American Institute of Architects.

Shown here at the presentation ceremonies are (L to R) Glenn Balch, Chapter President; Henry E. North, Jr., making the presentation; S. Kenneth Johnson, A.I.A.; Arthur E. Mann, A.I.A., and Irvan F. Mendenhall, engineer. Fourth member of the firm, Phillip J. Daniel, A.I.A. was in South America at the time.

new york

VOORHEES, WALKER, SMITH & SMITH, architects, of New York, have established two faculty summer fellowships; one at Rensselaer Polytechnic Institute and the other at the University of Virginia. The first recipients are, respectively, Prof. Alexis Yatsevitch of the P.R.I. Architecture Department and Prof. Roger C. Davis of Virginia U's School of Architecture. The two men will be resident at the firm's offices, 101 Park Avenue, for ten weeks beginning June 6th, and will spend some time in each of the major departments.

In commenting on the fellowships, believed to be the first of their kind ever given, Ralph Walker, senior partner, said: "We hope to give these instructors and many of their contemporaries a clear-cut insight into architectural practice on a large scale, so that they can return to classes with a clearer sense of the many problems that occur and how they are met. They will also be able to indicate to their fellow professors and to their students the care and study necessary to create a complex modern structure, and at the same time, comply with the clients' best interests."

BROOKLYN CHAPTER, A.I.A., has awarded its annual Medal of Honor and Merit to Leon Brand, 21, a Senior in the School of Architecture at Pratt Institute.

The medal, awarded for outstanding scholarship, was presented by Chapter Vice President Joseph Levy, Jr.

Brand has previously received awards from the Brooklyn Architects Scholarship Foundation, War Orphan Scholarships, Inc., New York State Regents and has won student architectural competitions

sponsored by Belden Stark Ceramics and Timber Structures, Inc.

oregon

ARCHITECTS AND HOME BUILDERS of Oregon have conducted a survey of how people's tastes in houses are changing, revealing that 62 per cent are now willing to have a home without a basement. Three years ago only 38 per cent would.

According to the survey, more people now prefer living rooms at the back of the house, overlooking the garden. Thirty-eight per cent are now willing to have bath rooms back to back, to save on plumbing installation, rather than separated.

Hip roof design is most popular, flat roof the least, except in subdivisions.

UNIVERSITY OF OREGON, awarded nine students Ellen M. Pennell scholarships, for the spring term in the university's school of architecture and allied arts. Portland recipients of the scholarships are: Mary Ann Constans, Tom J. Moss and Charles G. Petersen.

Eugene students winning the awards are: George E. Schultz, Jr., Wilbur G. Wilmot, Jr., Norma D. Gilmore, Raymond E. Levra, and Monte B. Morrison. Inga C. Shipstead of Davis, Calif., also won the scholarship.

south carolina

SOUTH CAROLINA CHAPTER was host for the regional conference of the A.I.A., at Fort Sumpter Hotel in Charleston on May 5, 6 and 7. Architects of the Carolinas, Georgia and Florida were in attendance.

Who are National Architects

Frank Chase Walker

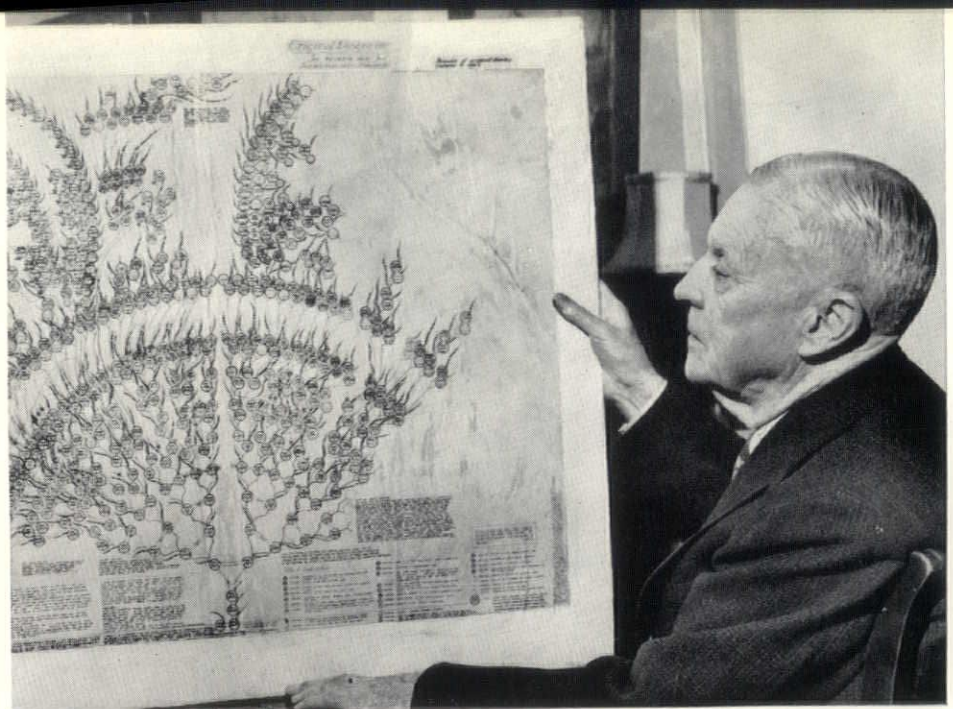
FRANK CHASE WALKER, A.I.A., of 1065 Balmoral Avenue, Chicago 40, Ill., has had a distinguished career as an architect and city planner, having been associated with Edward H. Bennett, F.A.I.A., and in the office of D. H. Burnham & Company in Chicago, beginning in 1904.

Born in Kenton, Ohio, he was educated there, at the Architectural Department of Chicago's Art Institute, and the Atelier Bennett in Chicago (1906-1909), the first Beaux Arts Atelier in the Middle West.

In this Atelier he won a Traveling Scholarship which enabled him to travel and study in many European countries in 1909-1911. Upon his return to Chicago, he resumed work in Mr. Bennett's office and at the Atelier where he won mentions, a medal, the Pupin and other prizes.

Thus he had a part in the pioneer city planning movement in this country, assisting on the "Chicago Plan," plans for Brooklyn, Minneapolis, Pittsburgh, Detroit, Ottawa, Canada, and other cities. He also made a plan for the development of the lake shores with islands and harbor at Lake Forest, Ill.

He was consultant on the design of Chicago's bridges, and he designed the semi-circular colonnade and many other architectural features of the Grant Park development. (See illustration at bottom of page).



FRANK CHASE WALKER, Member Emeritus of The American Institute of Architects, holding chart of his family ancestry. The chart was exhibited at the "Colonial Village" in the Chicago World's Fair of 1933. Chicago Tribune Photo.

Mr. Walker was registered as an architect in Illinois in 1915, and he practiced under his own name, specializing in war memorials, residences, commercial features, etc. He was associated with James R. M. Morison, A.I.A. as partner, 1916-1932.

His war memorials—Civil War, Mexican War, World War I—done in association with sculptors, received much acclaim. Many of his designs were published in national magazines of art and architecture, including that of The American Federation of Arts, National Geographic and others—one was on the cover of a Mountain States Telephone Company Directory.

His work has been shown at the galleries of the Art Institute in Chicago. He has

had pleasure as an outdoor painter, doing subjects from nature, and some of these also have been shown at the Art Institute.

One of Mr. Walker's Mexican war memorials, that at Salt Lake City, Utah, is in commemoration of the Mormon Battalion. The plaque on this monument is illustrated here.

Mr. Walker is a member of the Society of Mayflower Descendants, Sons of the American Revolution, Descendants of the Colonial Clergy, and he is a Fellow of The Institute of American Genealogy. He has taken an interest in his own family tree, and the chart illustrated here was exhibited in the "Colonial Village" at the Chicago World's Fair in 1933.



AT LEFT is reproduction of plaque on the Salt Lake City monument, "erected by authority of the State of Utah as a result of a movement by the Daughters of the Mormon Battalion." It was dedicated on May 30, 1937. Architects were Frank Chase Walker and James R. M. Morison. Architects advisory to the Commission—Don C. Young and Ramm Hansen. Don C. Young, A.I.A. is a grand-son of Brigham Young.

BELOW: Two views of semi-circular colonnade, a part of the first development of Grant Park. It was recently destroyed to make way for an underground parking garage.



Nelson Company

PLUMBING
HEATING &
AIR CONDITIONING
SUPPLIES

WHOLESALE

MAIN OFFICE
and
DISPLAY ROOM

2604 Fourth Ave., Detroit 1
WOodward 2-4160

ROYAL OAK
GROSSE POINTE
ANN ARBOR

*“depend on
a dependable
name”*

JOHN A. MERCIER BRICK COMPANY

3895 Roulo Ave., Dearborn
VI. 1-0761

Manufacturer and Distributor

Mercrete

SLAG BLOCK

Lighter in Weight

SLAG BRICK

Lighter in Color

QUALITY FACE BRICK

*“specify
the best”*

Know Your Foundation

Jobs in June:

TRENTON—Elizabeth Street School
BELLEVILLE—H. S. Swimming Pool
DETROIT—Helen Keller School
OAK PARK—Suburban Temple
ECORSE TWP.—School
WARREN TWP.—Nat. Twist Drill Plant
FARMINGTON—Truck Transport Plant
LINCOLN PARK—Dix Emmons Shop. Ct.
DETROIT—Office Building Addition
PONTIAC—State Hospital Addition
ST. CLAIR SHORES—Shopping Center
FRANKLIN HILLS—Residence
DETROIT—Whitmore Department Bldg.
DEARBORN—Greenfield Road Plant
CLAWSON—St. Andrew's Church

Michigan Drilling Co.

13911 Prairie Avenue
Detroit 38, Michigan
WEbster 3-8717

HANLEY COMPANY

ESTABLISHED 1893

LARGEST MANUFACTURERS
OF GLAZED AND FACE BRICK
IN THE EAST

Capacity 8,000,000 Units Per Mo.

FACE BRICK
GLAZED BRICK
ACID BRICK
UNGLAZED FACING TILE
GLAZED FACING TILE
QUARRY TILE
FLOOR RICK

14976 SCHAEFER HWY., DETROIT 27

Walter O. Place Company

Excel—

Hospital Casework

Niedringhaus—

Hollow Metal

Mesker—

Aluminum & Steel Windows

Michaels Art Bronze—

Architectural Metals

15367 EVERGREEN RD.
DETROIT 23, MICH.
KENWOOD 2-6480

Herman Kiefer Hospital—

Excel Casework & Dressers

Lake St. & Whitfield Schools—
Mesker Aluminum Windows

J. L. Hudson, Northland—
Niedringhaus Hollow Metal Work

Wm. F. Back 
LUMBER CO. 5172 ST. JEAN AVENUE
DETROIT 13, MICHIGAN WA 1-9460

GRACE HARBOR
Lumber Company
13833 West Chicago
DETROIT 28, MICH. ESTABLISHED 1892
WE 3-4913

• SINCE 1884 •

RESTRICK
LUMBER COMPANY

14400 WYOMING WE. 3-4830
Detroit 21, Michigan



F. M. SIBLEY
LUMBER CO.
LO. 7-5100
6460 Kercheval Avenue
Detroit 14, Mich.

Gerald George Diehl

An address before the 52nd Annual Convention of the National Catholic Educational Association, Atlantic City, April 13, 1955, on the subject, "What the Architect and Owner need from Each Other"

I wish to thank Msgr. F. C. Hochwalt for his kind invitation to be a member of this panel. The opportunity to join this discussion, in addition to the regular convention program, will allow me to gain a greater knowledge of your problems, thoughts, desires and aims in both curriculum and latest teaching methods, all of which determine the type of buildings that best serve your needs. I trust it will also afford me an opportunity to express my views as an architect in relation to your educational program.

In my opinion, it would seem more appropriate to call such a serious-minded group as this a seminar on education, or possibly a conference. So many conventions consist of a small group working and passing resolutions, while the rest of the "visiting firemen" do the town and read the results when they get home. Instead, I learned while attending your convention two years ago, that each group of your association is attempting to exchange thoughts and leave with a greater knowledge of all problems concerned.

In giving thought to the subject of this discussion and starting to jot down my ideas, I found it impossible to draw a clear line of separation as to what the owner needs from the architect and the reverse, since they are so closely interwoven and because I believe both desire the same result.

I believe the most important factor is for the owner to select a good architect, one who is both creative and experienced, and then to give the architect the freedom to develop a solution that is best for all—for the children, the teachers, and your budget. When I say freedom, many of you might wonder why and to what extent. I firmly believe that if each owner selected his architect in accordance with the following suggestions he would have no worries as to the amount of freedom to accord to him because his architect would have met all the requirements of a competent and trustworthy professional man.

Creative ability and experience are prime requisites and go hand in hand. Determine the architect's creative ability and planning skill. A few clichés of contemporary design applied to the exterior of a building are not sufficient. Good contemporary planning includes the proper use and relation of the site to other buildings of the group. When the architecture conforms to the site, both economy and beauty are achieved, and thousands of dollars can often be saved by not trying to adapt or use a stock plan not suited for the proposed site. A careful study of the site should determine the layout of the building to be developed.

Secondly, a school or any other building is more than a group of rooms. Does the architect you are considering believe in correlating all your ideas, the teachers', the latest in approved teaching and classroom methods, and then try to solve the problem, or does he just agree to build you a school of so many rooms? And, I may ask, do you request just that little? Do his schools provide an environment desirable both for the teachers and pupils engaged in the learning process, and achieve this within the limitations of a proper budget? It is well to remember children spend more daylight hours in the school than they do in their homes, hence



GERALD G. DIEHL, A.I.A.

the importance of the proper atmosphere. Points to check: Is the interior related to proper orientation? Has sufficient and controlled light been provided? Is good circulation provided to the various areas? Has sound-control been thought of, especially in high schools? Are the rooms planned for the maximum use? Thoughtful planning can gain many uses of the same area. Many times a portion of our schools can be used after hours by other parish groups if proper control and isolation is provided. Also, appraise for the use of practical materials, color, etc.

When looking at completed buildings of various architects you are considering, find out how well they are constructed and the complete cost. When checking comparative costs, ask if each project's total costs include items such as finish grading, shrubs, walks, drives, venetian blinds, wardrobes, lightning protection, etc. They are part of the project whether they are under the general contract or if you pay separately, yet many times they are not included when construction costs are compared. Also, compare the type of construction and materials used when considering building costs. The parish or any other group with a limited budget can least afford to build a "cheap" school. By this I mean one which requires constant and excessive maintenance costs; you still have to pay for it. The real cost is the initial cost plus all maintenance costs. Some "cheap" schools have been done at the expense of a sound structure. Some projects are cheap schools by the desire of the client, others because of the architect whose only selling point is that his buildings run less than his competitor's. This cheap building soon will become a health and educational hazard for those who occupy it. However, by engaging the services of a good architect, you most certainly can obtain a sound, low-cost school, one that is well-built and that will serve the full needs of those using it.

In contemplating the choice of your architect, find out his approach to preliminary sketches or drawings. Does he attempt to sell on one fast sketch? Too few realize how important this stage is. When you consult a doctor you tell him your problems and he prescribes the treatment. The same applies in this case. It is at this time that the real thinking must be done to arrive at the proper prescription for your

THE
JOHN H. BUSBY
C O M P A N Y

ELECTRICAL
CONTRACTORS

826 Cherry Street
Detroit 1, Mich.
W O O d w a r d 1-1681

**wallace
candler,
inc.**

COMMERCIAL
AND INDUSTRIAL
ROOFING &
SHEET METAL
SERVICE

9000 rosela w n
webster 3-7544
detroit 4

Thomas Brick & Tile Co.

14360 Livernois Ave.
Detroit 4, Michigan

Telephone

T O w n s e n d 8-1354

FACE BRICK — GLAZED
BRICK — PAVING
BRICK — ACID BRICK
— REFRACTORY BRICK
AND CEMENTS — CUP-
PLES ALUMINUM WIN-
DOWS — WARE ALUM-
INUM WINDOWS

Est. 1896



For over half a century Detroit's quality roofer

Robert Hutton & Co. Inc.

ROOFING AND SHEET METAL CONTRACTORS

622 FORT ST. E. • DETROIT 26 • WOODWARD 2-1073

JOHNS-MANVILLE PRODUCTS

A. N. Hickson, Inc.

G E N E R A L B U I L D E R S

Established 1944

GENERAL CONTRACTORS FOR
DANIEL WHITFIELD ELEM. SCHOOL ADD.
LAKE STREET SCHOOL, PONTIAC, MICH.

14841 Wyoming Avenue, Detroit 38, Michigan • WEBster 3-9262

COMMERCIAL, INDUSTRIAL & INSTITUTIONAL CONSTRUCTION

MEIER CUT STONE Co.

FINE BUILDING STONES FOR FINE BUILDING PROJECTS

SERVICE
SINCE
1865

MAIN OFFICE
9664 French Road
at Gratiot
Detroit 13, Mich.
W A l n u t 1-3343

Yard No. 2, 6615 French Rd.

needs and budget. Also, check what he considers a full and complete set of working drawings and specifications. Do these include the proper details through all parts of construction, and up-to-date and clear specifications that properly tell what the drawings cannot? These are important for accurate bidding as well as assuring satisfactory completion of the project. A poor set of drawings and specifications will do either of two things—give you a ridiculously low bid which means the contractors will have to cut corners to make a profit—or give you extremely high bids to cover what the contractors feel might be asked of them during the progress of construction. Nor, is there any basis for true comparison of the bids, since they may not cover the same conditions. Does the architect provide competent supervision during the course of construction to assure that the job is built in accordance with the contract drawings and specifications and see that the correct interpretation of the architectural design is carried out to successful completion of the building? A good Architect needs and uses the services of consulting engineers. The complexity of the mechanical installation, for instance, demands it. The Archdiocese of Detroit now demands that the names of the structural and mechanical engineers (and I mean registered engineers) be listed on the title page of the specifications. Why? — because it was found that some architects were furnishing engineering services either by men not registered and therefore not properly qualified, or using the services of equipment manufacturers and material suppliers whose interest it is to sell their own products.

Another added service that a good architect will give you is his advice on your problems of maintenance and follow-through in the years to come. He will do this as a gesture of good-will and many times can help to save you money, such as having repairs done that may be covered by a guarantee still in force, or give you advice regarding maintenance that will in turn save making costly replacements.

It might be of interest to say here that one pastor who was considering several architects, prepared a questionnaire that covered all the phases of the architectural service and asked their approach to all of these items discussed. I frankly believe that this should be done more often, or at least discussed with the prospective architect.

Another point to remember is that if you engage an architect for a lower-than-normal fee, this does not mean you are making a saving. He must, necessarily, reduce his services to you and this means that the one who suffers is the client. It is an unfortunate condition that prevails amongst some of our profession and one that we are trying to correct as far as possible. The selection of your architect should be on the same basis as that of your physician—not on the basis of the lowest fee but as to who is most likely to render the best service.

Another condition which has existed for many years, and which is possibly becoming more prevalent, is the request for "free sketches." Many times the owner requests them from several architects, or in some cases the architect offers them. Both are wrong. In the case of the architect, the American Institute of Architects in its Mandatory Rules absolutely forbids the participation in any free sketch competition, unauthorized competition, or one not conducted in accordance with the rules of the Institute. You might well say, as an owner, that the ethics of a profession are no concern of yours, but there are many reasons why this practice is harmful. First, it is not possible to determine an architect's worth by studying a prospectus and a plan solution. It would take the professional judgment of a qualified architectural jury to do this, plus a well-written program. How much better it is to follow the previously outlined program of selecting a good architect. Secondly, the "free sketches" cannot be really "free." The cost and overhead of preparing these drawings must be paid for somehow, and they are either buried in the cost of your project or someone else's, or he must reduce his services some other way in order to make up the cost. No truly "ethical" professional man will disregard the ethics of his profession, and it is unfair for an owner to make such a request, knowing the true circumstances.

If the architect you are considering measures up to the foregoing check list, then you most certainly can give him a free hand. You can hand him the challenge to solve your problems, within your budget, and no competent architect will fail to accept that challenge and to produce the proper results to the best of his ability.

Now to reverse the situation, I would like to state what the architect needs from the owner. The good architect wishes to give you the opportunity to avail yourself of his knowledge and research in the latest of materials, construction and ideas of room use. It is often well to listen to your architect when you are discussing your project and budget. Sometimes he will find you are building more than would be necessary to fill your requirements. Again, in looking at your overall picture and potential growth, he might well advise you to build more at the present time if it is at all within your budget, perhaps the exterior shell of the future rooms that will be needed which can be finished as required. Costwise, you can save the second charge of overhead and profit from the general contractor and sub-contractors coming back in a short time to make an addition.

Allow your architect the freedom to design a functional building that will best suit the needs of the pupils and the teachers using it. Good "architecture of today" is merely the simplest and most direct solution of any problem in relation to site, plan, architectural and engineering requirements, and, above all, to the budget. It can and does have all the charm, scale, proportion and feeling that the other eras of architecture had during their own time. It

avoids all of the ill-applied "moderne" tricks which have hurt the true "architecture of today" just as much as the ill-applied traditional styles that are applied to an attempt to make a building look Gothic or Georgian. An exterior skin of any style that ignores the plan, the interior, and the function of the building, cannot be successful. Naturally, we are more familiar with traditional styles, and no matter how much they are modified they do not bother or shock us, however, they are often a poor design for a building for present-day use. What amazes me is why we are not building more structures designed as "architecture of today." This is merely a translation of the terms "functional" and "modern," but these words frighten many a client when mentioned. Our Catholic children can be taught in an environment that is conducive to the best in teaching methods and curriculum, and being Catholics, I feel they should also be trained in school to appreciate and live with the best of today's art. Why not devote a small area or even a wall in the school to original religious art?

When you engage an architect do not limit him to the shell of the structure. Allow him to see that your building is in harmony; on the exterior by proper planting, drives and parking approaches; on the interior by taking his advice on color, decoration and furnishings. Color, light-source and control, acoustics, are more than a whim of an architect, they are all things of much importance to the final occupants of the space. Multi-purpose planings are very important and all-too-often neglected. I was interested to see that one of the panels at this convention will discuss this important subject. It can often save a good deal of money in the cost of the project if thought is given to varied uses and good planning. I believe this can be summed up by the word "flexibility," subdivided into "expansibility," "convertibility" and "versatility."

Further, in all fairness to your architect, I think consideration should be given to the subject of bidding procedures. Our firm normally recommends to a client to follow our advice on an "approved bidders list" which has been made up of certain general contractors and sub-contractors who are capable in ability and equipment to handle the particular type of project involved, and this has proved most successful. This does not eliminate competition, but it does secure bids from men of an equal calibre who will stand behind their work and respect the right to be on this approved list. This system also prevents the general contractor from "chiseling" on the sub-contracts after the contract has been awarded. These savings have never been known to go to the owner.

In conclusion, may I say that it has been indeed gratifying to be here and to see the interest in building problems in relation to the educational program. I have learned much and will use it as a guide in the future. I also enjoyed viewing the fine display of architectural work sponsored by the Church Property Administration Magazine.

JACK SKITCH

PLUMBING, HEATING AND
VENTILATING CONTRACTORS
FOR

HERMAN KIEFER HOSPITAL
DETROIT, MICHIGAN

2619 W. 14 Mile Rd., Box 209, Royal Oak, Mich.
Lincoln 5-8787

Van Dam Iron Works

Established 1928

Manufacturers of Ornamental and Miscellaneous Iron,
Steel Stairs, Fire Escapes, Custom Aluminum Work

MISCELLANEOUS IRON
FOR
JOLMAN SCHOOL ADDITION
MUSKEGON, MICHIGAN

343 La Grave Ave., S. E., Grand Rapids 3, Mich.
Phone: Grand Rapids 9-6103

M. H. WILKINS CO.

*Structural Steel and Steel Joists
Fabricated and Erected*

20501 HOOVER, DETROIT 5
LAkeview 6-1000

turner engineering company

DEPENDABLE
ELECTRICAL
CONSTRUCTION
FOR 38 YEARS

464 Brainard Street
Detroit 1, Michigan
TEmple 1-0470

WALTER L. COUSE & CO.

Engineers & Contractors



12740 LYNDON AVENUE
DETROIT 27, MICHIGAN

BRoadway 3-2500

GYPSUM ROOF DECKS

Fireproof
Lightweight
Insulating

hoge-warren-zimmermann co.

E. C. HOGE — J. H. HOGE
5300 Vine St., Cincinnati 17, Ohio
Aven 5621

ALFRED W. WARREN
111 Washington St., Chicago 1, Illinois
State 2-8029

JOHN S. M. ZIMMERMANN
4500 E. Nevada Ave., Detroit 34, Mich.
TWinbrook 2-5421

Smith Fireproofing Co.

FIREPROOFING CONTRACTORS

Furnished and Erected
All Structural Glazed Facing Tile
and Masonry Partitions
For Herman Kiefer Hospital Addition
Detroit, Michigan

1942 E. State Fair Avenue
Detroit 34, Michigan
FOREst 6-1118

Turner-Brooks, Inc.

Floor Covering and Acoustical Contractors

9910-30 DEXTER BOULEVARD
DETROIT 6, MICHIGAN

TOwnsend 8-2470



Concrete Products Association of Michigan (Detroit Area Members) Cocktail Party and Dinner given for Detroit Chapter, A.I.A. at Whittier Hotel, June 14, 1955.

Top Row, Standing, Left to Right: Benjamin Wilk, Vice Pres. & Gen. Mgr. Standard Building Products Co.; Chester A. (Tom) Sirrine, A.I.A., Exec. Sec. C.P.A. of M., Principal Speaker; Talmage C. Hughes, F.A.I.A., Exec. Sec. M.S.A. and Det. Chap. A.I.A.; Herbert Vincent, Sales Mgr., Cinder Block, Inc. and Vice Pres. of C.P.A. of M.

ENGINEERING • MATERIAL • INSTALLATION

N. W. Hamill Co.

Caulking
Tuck-Pointing
Weatherstrips

1430 EAST LARNED ST.
DETROIT 7
WOODWARD 1-0534

ATLANTIC METAL PRODUCTS, INC.

- Hollow Metal Doors & Frames
- Kalamein & Tincad Doors

KANE MFG. CO.

- Light Proof Shades

VENTILOUVRE CO.

- Louvres

SEAPORCEL METALS, INC.

Architectural Porcelain Enamel Work

STEELBILT, INC.

Steel Horizontal Sliding Glass
Doorwalls & Windows

THE KAWNEER COMPANY

Institutional Entrances
Aluminum Flush Doors

RAYNER ROOFING CO.

"RAIN OR SHINE RAYNER ROOFS"

Industrial & Commercial Work

ROOFING & SHEET METAL ON

LYNN HOSPITAL, LINCOLN PARK

NORTH HILL ELEMENTARY SCHOOL
ROCHESTER, MICHIGAN

7707 Lyndon Avenue, Detroit 38, Michigan
UNiversity 4-1700

the taubman co general contractors

10325 puritan avenue
detroit 21, michigan

quality
construction

UNiversity 4-8638

R. E. LEGGETTE CO.

Established 1932

Acoustical & Building Specialty Contractors

CELOTEX Acoustical Products

SANYMETAL Toilet Partitions

INSULROCK Structural Insulating
Acoustical Roof Deck

9335 St. Stephens Ave., Dearborn, Mich., LUzon 4-2000

Heineman & Lovett Co.

WATERPROOFING ENGINEERS AND
CONTRACTORS

GENUINE
IRON BOND
SYSTEMS

For Basements, Pools, Tanks
and Other Sub Structures

H-I-TEX
CEMENT
COATINGS

Restoring Concrete & Masonry
Super Structures, Cement Coating
For Waterproofing & Decoration

5327 Tireman Ave., Detroit 4, Michigan
TYler 6-1226

bent. young waterproofing co.

BITUMINOUS WATERPROOFING FOR

Lynn Hospital, Lincoln Park, Michigan

POURED LEADED JOINTS FOR

Morley Brothers Building, Royal Oak, Michigan

SECOTON-VINYL PLASTIC WALL FINISH FOR

North Hill Elementary School, Rochester, Mich.

19929 EXETER AT W. STATE FAIR, DETROIT 3, MICH.
TWinbrook 3-8272

B & L ELECTRIC C O M P A N Y ELECTRICAL CONTRACTORS

18424 Fitzpatrick Ave.
Detroit 28, Michigan
VERmont 7-3800

ENGINEERING & CONSTRUCTION

OUR 35th YEAR

**Mechanical
Contractors**

HEATING • PLUMBING

Specialists in
WESTINGHOUSE
AIR CONDITIONING



Mechanical Heat & Cold Inc.

12320 HAMILTON AVE., DETROIT 3

PHONE TO. 8-9600

autoclave installation begins at cinder block, inc.

With Autoclaves now arriving at the rate of one-a-week, High-Pressure Curing of Light-Weight Concrete Block becomes a nearing reality for Michigan building construction.

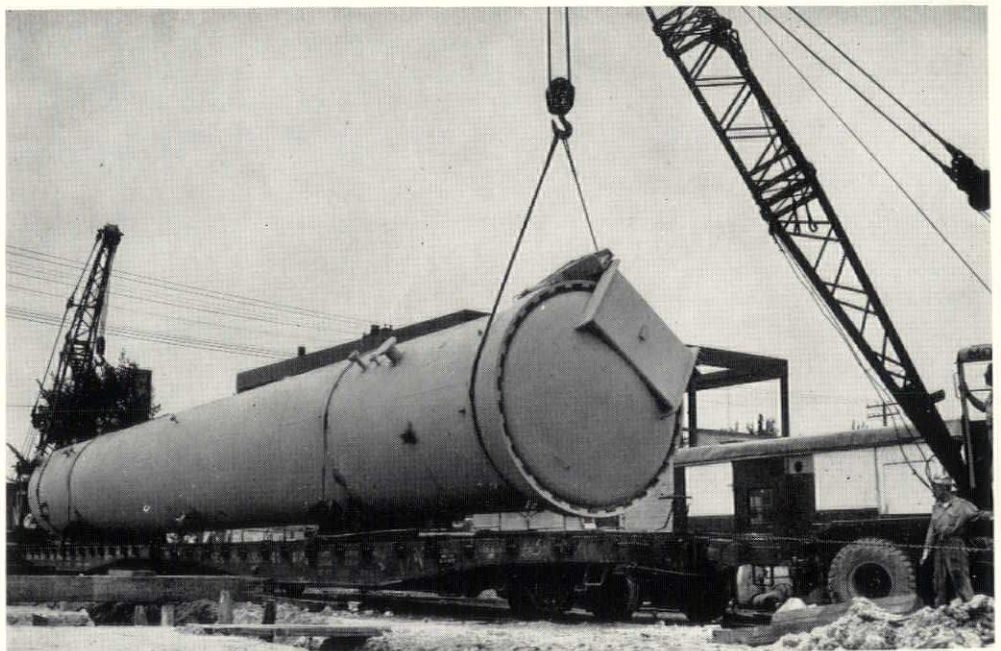
Work on the new \$500,000 Curing Plant in Detroit began in early April and is proceeding according to schedule, with the expectation that the in-production date of October 1st will be met with ease. The Steam Generating Plant is nearing completion; four of the six autoclaves have already been delivered, with the remainder expected by the middle of this month.

These autoclaves are the heart of this remarkable Curing Process. Within these gigantic steel tubes Light-Weight Block are subjected to 350° steam at 100% humidity under 150 p.s.i. for a pre-determined curing cycle. This, and the rapid release of the steam and pressure at the end of the curing cycle, results in a block superior to that produced by any other known curing method. Some idea of the size of the autoclave may be gained from the illustration—each is 90 feet long, 10 feet in diameter, and weighs 60 tons. Installation has begun on the autoclaves delivered, and work on the housing of the autoclaves, the Curing Building, is expected to begin about August 15.

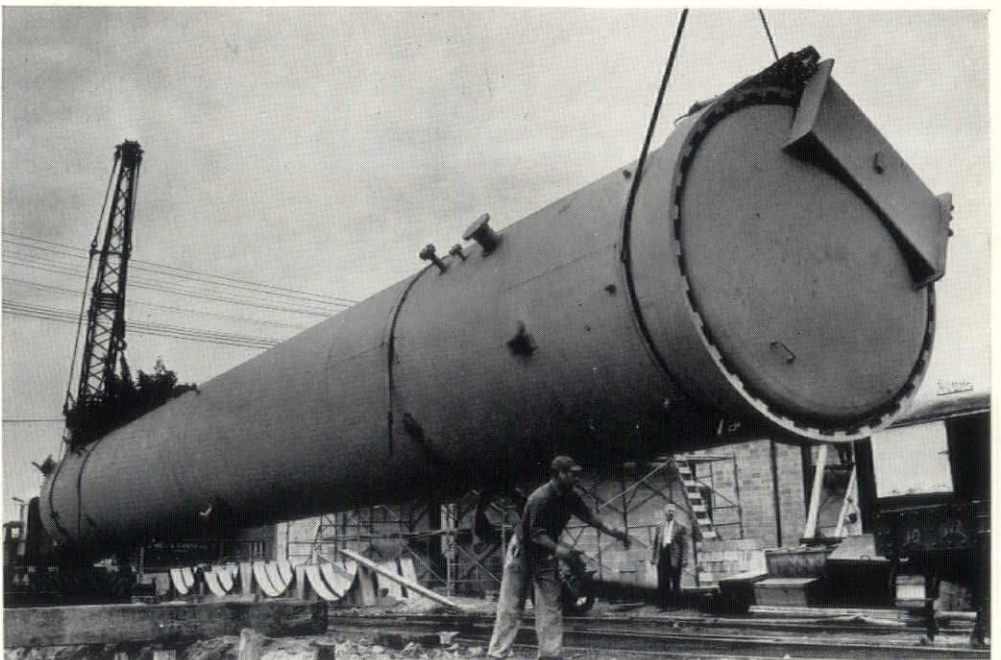
The Steam Generating Plant, at the right of the top photograph, is a source of pride of the company for its attractive appearance belies its important part in the curing process. Light-weight block of a new expanded shale aggregate offering increased strength and uniformity are laid in stack bond exposed. The roof is built of F & A roof and floor system, using pre cast joist with expanded shale aggregate and filler tile of the same material. When in regular operation, the boiler now being installed will generate 359 H.P. . . . more than sufficient for the six autoclaves to be in operation.

Curing light-weight block with saturated steam under pressure, as will soon be done at Cinder Block, Inc., is the best curing method known today. It produces a more stabilized finished product with almost immediate availability. During curing, lime is hydrolized from the cement and combines with silica to form a hydrated calcium silicate which does not swell or shrink with changes in moisture conditions as much as the amorphous forms resulting from other curing methods.

As a result wall changes using high-pressure cured block will be at least 50% less than with block cured by other methods. Another important factor is that the hardening process is accelerated during the first few hours of curing and results in a block with early high strength. High-pressure cured block approximate their permanent strength within the **first 24 hours**, equal to at least 28 days of moist curing. This will go far to eliminate on-the-job emergencies, for block will always be immediately available, comparable in quality to these already on the project.



First Autoclave being delivered on two flat cars.



Autoclave being placed in position by crane.

MERCURY ROOFING & SHEET METAL CO.

30 Years Experience

ROOFING & SHEET METAL WORK
ON
MORLEY BROTHERS OFFICE BUILDING
AND WAREHOUSE,
ROYAL OAK, MICHIGAN

567 LIVERNOIS AVE., FERNDALE 20, MICHIGAN
JORDAN 4-5707

ACOUSTICAL TILE
CONTRACTORS FOR
HERMAN KIEFER
HOSPITAL
DETROIT, MICHIGAN

SERVICE ART PLASTERING COMPANY

4612 Woodward Ave., Detroit 1

ALBERT FICI
W. J. GOODSON

TEmple 3-9013

OTTO H. SAUER CO.

General Building Contractors

Churches, Commercial, Custom Residential

5735 Rohms Avenue
Detroit 13, Michigan
WAlnut 1-3054

MAJOR PLUMBING & HEATING CO.

Established 1932

MECHANICAL CONTRACTORS
For
LYNN HOSPITAL
Lincoln Park,
Michigan

824 Bagley Ave., Detroit 26, Mich. • WO. 1-7777

Transit Mixed
Concrete
Face Brick
Sand and Gravel
Complete Line of
Building Supplies
and Agents for
Ceco Steel Sash

BOICE BUILDER'S SUPPLY

Manufacturers of Brick — Block — Concrete

545 TELEGRAPH ROAD

PONTIAC 19, MICHIGAN
FEDERAL 5-8186

UNDERWRITERS' LABORATORIES APPROVED VAULT DOORS GROUT OR NON-GROUT

Complete SERVICE Facilities

Diebold
INCORPORATED

4105 Cass Ave.

Detroit 1, Mich.

TE. 3-4477

We Are Very Pleased . . .

To be recognized as associated
with many of the fine structures
executed by the H. E. Beyster &
Assoc., Inc.

Modernfold Door Sales Co.

18515 JAMES COUZENS HIGHWAY
DETROIT 35, MICHIGAN • UN. 4-2664

Gibraltar Floors, Inc.

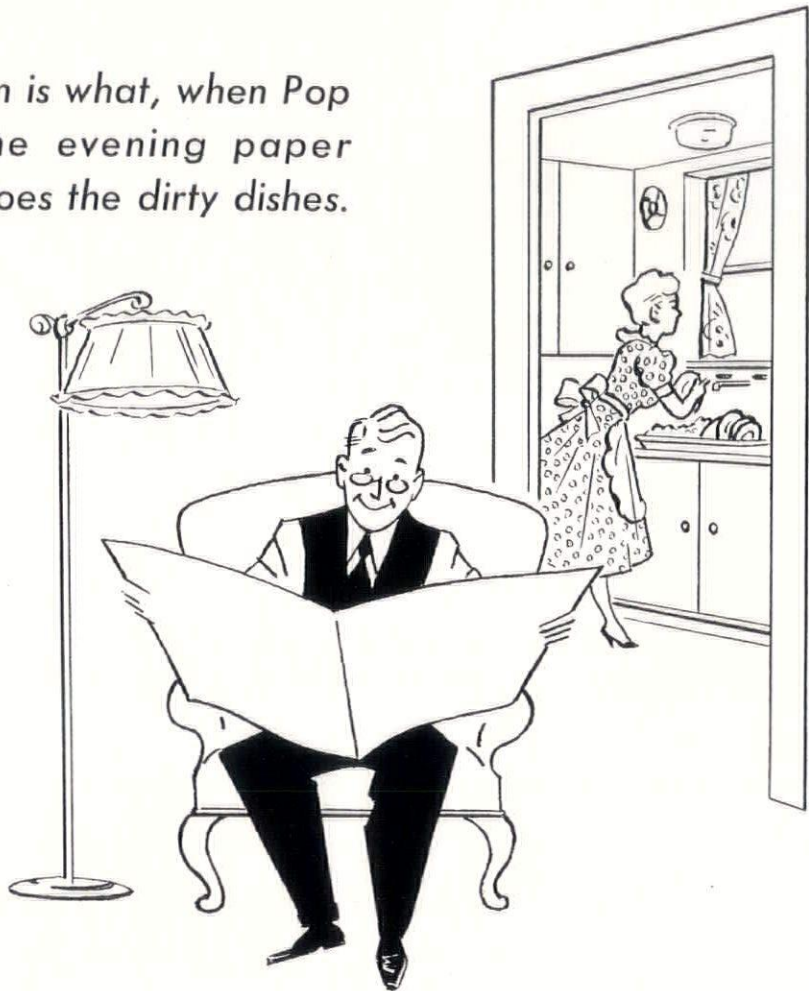
TERRAZZO & GRANOLITHIC FLOORS
FOR HERMAN KIEFER HOSPITAL
DETROIT, MICHIGAN

CERAMIC TILE
FOR DANIEL WHITFIELD ELEMENTARY SCHOOL
ADDITION AND LAKE STREET SCHOOL
PONTIAC, MICHIGAN

48 W. State Fair Avenue, Detroit 3, Michigan
FOrest 6-0100

Automation?

Automation is what, when Pop picks up the evening paper instead of, does the dirty dishes.



- It's history that Michigan's automotive industry was the first large user of mechanized conveyors. Now automation is the newest concept on the business horizon.
- Conveyors . . . automation . . . they are parts of the broad field of materials handling and electric power applications. And Edison technicians are able to help you put electricity to work in your plant on anything as "old" as conveyors, as new as automation, on the broad variety of jobs in between. This is another of the nine major industrial advisory services offered Edison customers.
- A question about materials handling, or a power application? In Detroit call WO 2-2100, ext. 9351. Elsewhere in Southeastern Michigan call the nearest Edison office. There's no obligation, of course.

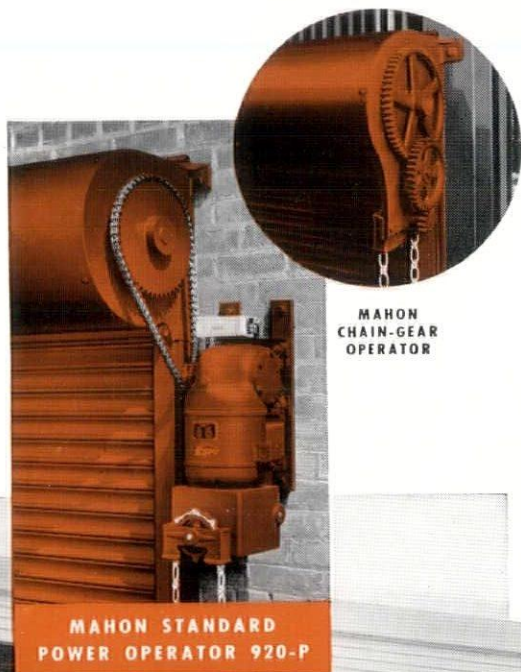
There are other Edison advisory services on . . .

- | | |
|----------------------------------|-------------------------------------|
| ● Air conditioning | ● Commercial electric water heating |
| ● Industrial process heating | ● Wiring layout |
| ● Commercial electric cooking | ● Electric space heating |
| ● Industrial-Commercial lighting | ● Ultra-violet radiation |

DETROIT EDISON

Rolling Steel Doors

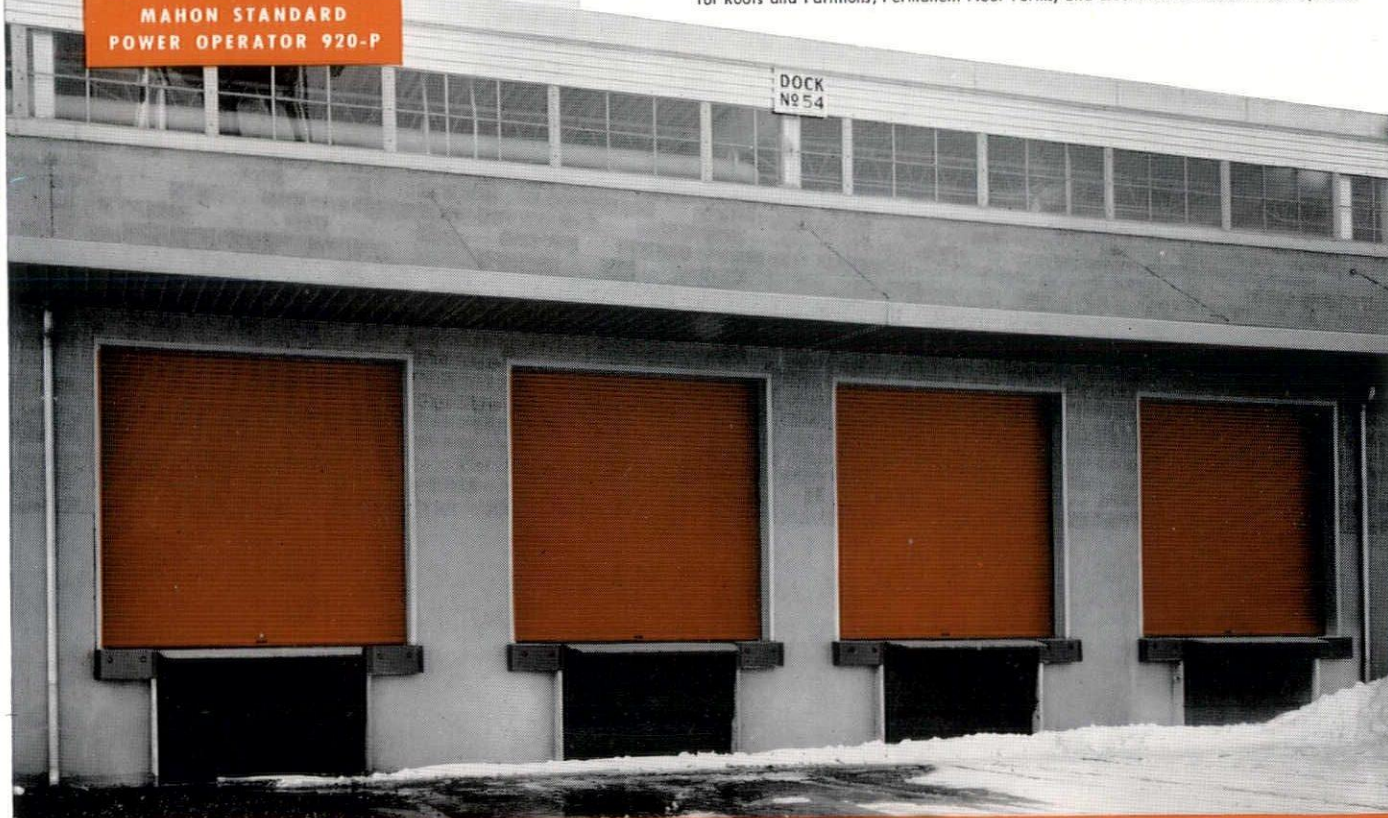
Manually, Mechanically, or Electrically Operated



No matter what your door requirements might be—loading dock opening, truck opening, railroad opening, firewall opening, or craneway opening—you will be better served by good, permanent, rolling steel doors. For real protection, long life, and convenient, time-saving operation, a power operated rolling steel door has no equal. No other type of door can match its compactness in operation . . . the vertical roll-up action of the door curtain occupies no usable space either inside or outside the opening—and there are no overhead tracks or other obstructions to interfere with material stacking or crane handling adjacent to door openings. Rolling steel doors sustain less damage, require less maintenance . . . their all-metal construction assures a lifetime of trouble-free service and provides maximum protection against intrusion and fire. When you select a rolling steel door, it will pay you to check specifications carefully . . . you will find extra-value features in Mahon Rolling Steel Doors—for instance, the galvanized steel material, from which the interlocking curtain slats are rolled, is BONDERIZED and DIP-COATED with synthetic enamel which is baked on at 350° F. prior to roll-forming. You will find other Mahon features in both design and materials that add up to a greater over-all dollar value. See Sweet's Files for complete information, or write for Mahon Catalog G-55.

THE R. C. MAHON COMPANY

Detroit 34, Michigan • Chicago 4, Illinois • Representatives in all Principal Cities
Manufacturers of Rolling Steel Doors, Grilles, and Automatic Closing Underwriters' Labeled Rolling Steel Fire Doors and Fire Shutters; Insulated Metal Walls and Wall Panels; Steel Deck for Roofs and Partitions; Permanent Floor Forms, and Electrified Cel-Beam Floor Systems.



ROLLING STEEL DOORS, SHUTTERS AND GRILLES TO MEET EVERY REQUIREMENT

Four Mahon Power Operated Rolling Steel Doors installed in a loading dock with mechanical floor levelers in each opening. A total of thirty-nine Mahon Rolling Steel Doors were installed in various types of openings in this new Sutherland Paper Co. Plant, Kalamazoo, Mich. Miller-Davis Co., Designers and Gen. Contrs.

MAHON