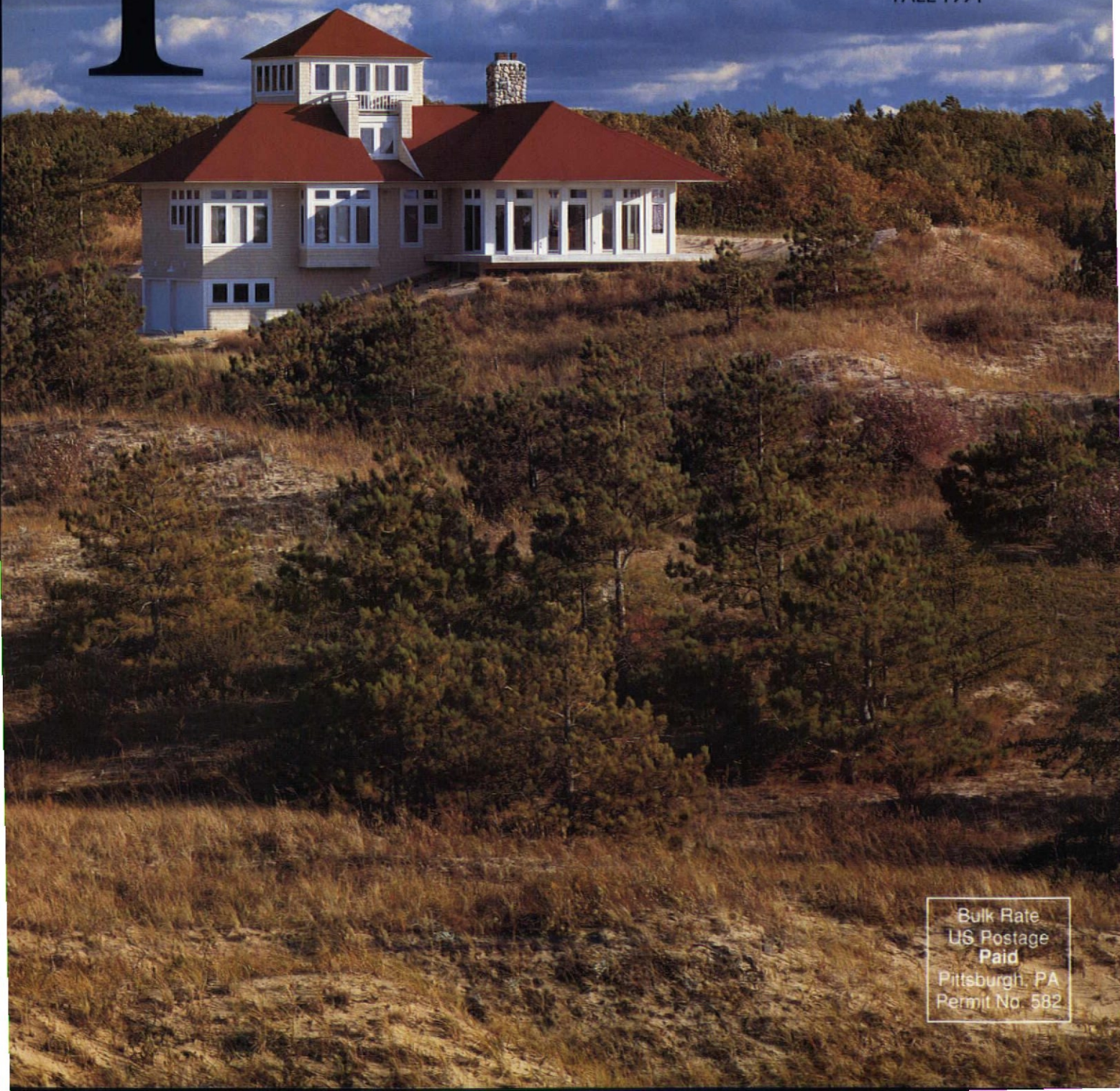


\$2.50

THE MAGAZINE OF  
AIA  
MICHIGAN

# place

FALL 1994



Bulk Rate  
US Postage  
Paid  
Pittsburgh, PA  
Permit No. 582



# **WE MAKE SAFE ENVIRONMENTS HAPPEN.**

SO YOU CAN  
TAKE THEM  
FOR GRANTED

WE PROVIDE THE  
TOTAL SYSTEM:

CLEAN AIR



PROPER TEMPERATURE



PURE WATER



SANITARY DISPOSAL

... RESPONSIBLY.

**The Plumbing and Heating Industry of Detroit**

Quality ■ Performance ■ Innovation

14801 West Eight Mile Road ■ Detroit, Michigan 48235

**CALL NOW** for a directory of our contractors: **(313) 341-7661**





# c o n t e n t s



## FALL 1994

3

### F o r u m

Searching For Mr. Goodhouse

4

### J a r g o n

Housetalk

6

### R u r a l   G o t h i c

An Inspired Solution To A Difficult Problem

10

### G l a s s   R o o f

Let There Be Light

12

### L a k e f r o n t   C o t t a g e

A Dream Comes True On A Budget

14

### B a c k   T o   B a s i c s

A Simple But Stunning Design

16

### N o r t h e r n   R e t r e a t

A Grand Place To Live And Play

18

### B e n z i e   C o u n t y   B e a u t y

A Welcome Newcomer To The Vernacular Dune

20

### F a r m h o u s e   R e v i v a l

Historical Research Yields A Bucolic Beauty

22

### V e r t i c a l   E l e m e n t s

A Large House Comes Down To Scale

24

### N a t u r a l   E x p a n s i o n

Growing Toward The Light

28

### L a n d m a r k s

The House That Tom Built

### A b o u t   T h e   C o v e r

A summer cottage with a design inspired by its location

Architect: AAI, Inc   Photography by: Dietrich Floeter Photography





**CLARK**  
Construction Company

*A full range of  
professional  
construction  
services.*

**3225 W. St. Joseph Street  
Lansing, MI 48901  
(517) 372-0940**

**615 Cliff Street  
Battle Creek, MI 49017  
(616) 963-0202**

**It's not just piping,  
it's a work of Art!**

**LOCATIONS IN:**

**Detroit**  
220 Victor Ave.  
Highland Park, MI 48203  
313/868-2400  
313/868-0011 Fax

**Saginaw**  
2430 Midland Rd.  
Saginaw, MI 48603  
517/799-1230  
517/799-6052 Fax

**Ann Arbor**  
2453 S. Industrial Hwy.  
Ann Arbor, MI 48104  
313/747-8820  
313/747-6788 Fax

**Lansing**  
7619 Northport Dr.  
Lansing, MI 48917  
517/322-4036  
517/322-9030 Fax

**Tennessee**  
One Timco Drive  
Columbia, TN 38401  
615/861-8004  
615/380-8993 Fax



**John E. Green Company**  
Mechanical Contractor

*"An Equal Opportunity Employer"*

place

**EDITORIAL COMMITTEE  
AND STAFF**

**Editor**

Timothy Casai, AIA

**Committee**

Dane Johnson, AIA  
Celeste Novak, AIA  
Lincoln Poley, AIA  
James Shane, AIA

**Executive Director**

Rae Dumke, Hon. AIA

**Business Manager**

Cathy Mosley

▼▼▼

**ADVERTISING SALES**

Karl Rabeneck  
TSG Publishing  
3090 West Liberty Avenue  
Pittsburgh, PA 15216  
412/344-3360

▼▼▼

AIA Michigan  
553 East Jefferson  
Detroit, MI 48226  
313/965-4100

Published By  
TSG Publishing  
3090 West Liberty Avenue  
Pittsburgh, PA 15216  
412/344-3360

▼▼▼

**AIA MICHIGAN  
BOARD OF DIRECTORS**

**President**

Eugene Hopkins, AIA

**Vice President**

Graham Dickens, AIA

**Secretary**

Tom Mathison, AIA

**Treasurer**

Lincoln Poley, AIA

**Past President**

Steve Vogel, FAIA

**Regional Director**

Richard Fry, AIA

**Directors**

Rick Anselmo, AIA  
Randy Case, AIA  
Alan Cobb, AIA  
Graham Dickens, AIA  
Richard Fry, AIA  
Paul Heupel, AIA  
Eugene Hopkins, AIA  
John Jensen, AIA  
Dave Kimble, AIA  
Tom Mathison, AIA  
Gretchen Minnhaar, AIA  
Dick Mitchell, AIA  
Lincoln Poley, AIA  
Daniel Redstone, AIA  
Gary Skog, AIA  
Park Smith, AIA  
Bob Stow, AIA  
Benedetto Tiseo, AIA  
Steve Vogel, FAIA  
Robert Ziegelman, FAIA  
Associate Director  
Alex Smart, Associate

▼▼▼

PLACE, (ISSN 1062-8657)  
553 East Jefferson, Detroit, MI 48226. Editor: Timothy Casai; Art Director: Nancie Magnuson; Associate Editor: Peter Pennline. Please address all letters and inquiries to the above address in care of Rae Dumke.



# Searching for Mr. Goodhouse

**W**e've all had that feeling. It usually comes right before we have guests over to the house, and it usually lingers after everyone has gone. Occasionally it sneaks up on us late at night or when we're quietly reading. And we are afraid that the cure is worse than the disease.

It seems that all of us at one time or another have suffered from that desire to remodel or renovate, to move or to build, to fix-up or add-on. It's that feeling in the pit of your stomach (or the bottom of your wallet) that says - "I want a cool house."

Searching through magazines (like this one) and home tours help ease the pain. Oh, we paint, we wallpaper, we buy everything from furniture to lamps, but we never let our hair down and do it all the way.

PLACE found nine people who did it beautifully. Working closely with their architects, these people realized a dream, and in the process did something special. These homes are big and small, wild and conservative, affordable and...well, up there. These homes are from every corner of the state and represent a significant cross section of design ideals. The one constant in these designs is sensitivity—to site, to budget, to detail, to

owners' requirements. We applaud this work.

And to those of you who may be getting serious about taking the cure, we have one small bit of advice. When you decide to do it, do it with an architect, the results are amazing. ▼

*Consulting for Architectural Restorations, with an emphasis on decorative and utilitarian finishes.*



**SEEBOHM, LTD.**

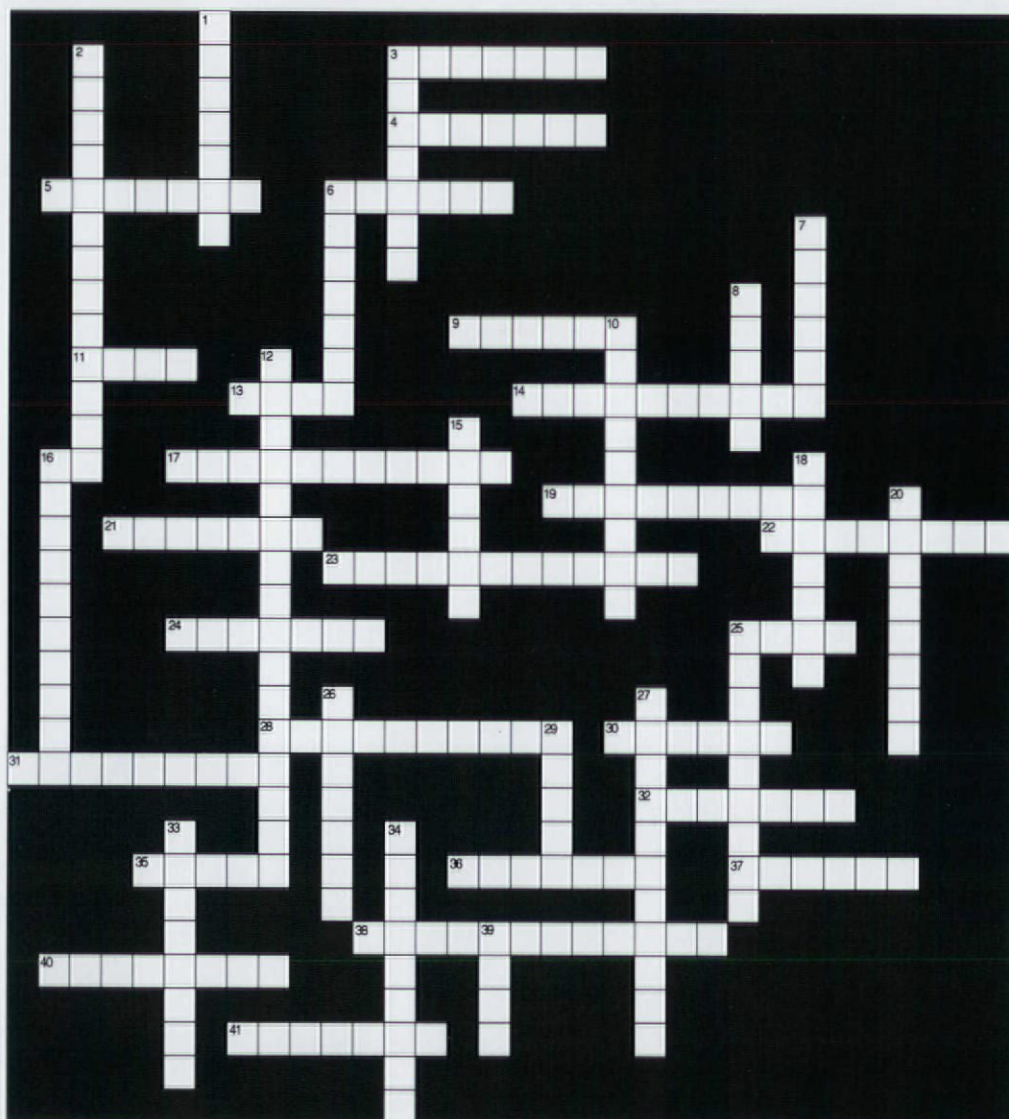
*Specializing in the preservation, conservation and protection of historic properties of the Great Lakes States.*

*Services include color matching, media analysis, project management, documentation, estimating and the writing of specifications.*

P.O. Box 4763 • East Lansing, MI 48826-4763 • Phone 517-339-1900 • FAX 517-339-1920



# Housetalk



## Across

3. 1. A porch or covered walk consisting of a roof supported by columns; a colonnade (continuous row of columns) porch. 2. A freestanding roofed colonnade; a stoa.  
4. A network, often diagonal, of strips, rods, bars, laths, or straps of metal or wood, used as screening or for airy, ornamental constructions.

5. A roofing tile which has the shape of an S laid on its side.

6. 1. A summerhouse with a view. 2. A belvedere.

9. An exterior finish, usually textured; composed of portland cement, lime and sand, which are mixed with water.

11. In ancient architecture, a court or hall, esp. an open court attached to a house.

of houses sharing one or more sidewalls with its neighbors.

23. 1. A carriage porch. 2. A doorway large enough to let a vehicle pass from street to parking area.

24. 1. One of a number of horizontal timbers that are laid on a slab or on the ground and to which the flooring is nailed. 2. Any long horizontal beam, at or near the ground, which distributes the load from posts or framing.

13. 1. A horizontal timber, at the bottom of the frame of a wood structure, which rests on the foundation. 2. The horizontal bottom member of a window frame or other frame.

14. A space before the door of an ancient Roman house, forming a court which was surrounded on three sides by the house and was open on the fourth to the street.

17. The cold section of a Roman bath, sometimes including a swimming pool (piscina).

19. In an ancient Greek house, an entrance vestibule.

21. A roof having a double slope on all four sides, the lower slope being much steeper.

22. One of an unbroken line



25. A stair unit which consists of one tread and one riser.
28. A dormer window whose eave line is parallel to the eave line of the main roof instead of being gabled; provides more attic space than a gabled dormer.
30. One of a series of inclined members to which a roof covering is fixed.
31. A tall and more or less ornamental post at the head or foot of a stair, supporting the handrail.
32. 1. An open grating or latticework, of either metal or wood. 2. An arbor or framework for the support of vines.
35. The vertical triangular portion of the end of a building having a double-sloping roof, from the level of the cornice or eaves to the ridge of the roof.
36. In the U.S.A., the Classic Revival style, from ca. 1790 to 1830.
37. The covering of a roof, or the like, usually made of straw, reed or similar materials fastened together to shed water and sometimes to provide thermal insulation.
38. The arrangement and design of windows in a building.
40. A decorative or protective facing applied to the lower portion of an interior partition or wall, such as wood paneling or other facing material.
41. A wood-framed house, common to colonial New England, which has a short roof pitch in front and a long roof pitch, sweeping close to the ground, in back.

#### Down

1. A roofing unit of wood, asphaltic material, slate, tile, concrete, asbestos cement, or other material cut to stock lengths, widths and thicknesses; used as an exterior covering on sloping roofs and side walls; applied in an overlapping fashion.
2. English movement in applied art and indirectly in architecture during the second half of the 19th century, emphasizing the importance of craftsmanship and high standards of design for everyday objects.
3. In Italy, a palace, but the term is applied to any public building or private residence which is impressive.
6. A roof which has two pitches on each side.
7. American eastern Indian dwelling; round or oval in plan, with a rounded roof structure consisting of a bent pole framework covered by pressed bark or skins.

8. 1. In the Roman and Renaissance periods, a country seat with its dwelling, outbuildings, and gardens, often quite elaborate. 2. In modern times, a detached suburban or country house of some pretension.
10. A member which projects and supports that part of a roof construction beyond the face of a gable.
12. A richly decorated American building fashion of the 19th cent.
15. A shallow channel of metal or wood set immediately below and along the eaves of a building to catch and carry off rainwater from the roof.
16. The eclectic form of country-house design, fashionable in England and the U.S. in the 1840s and 1850s, characterized by low-pitched, heavily bracketed roofs, asymmetrical informal plan, square towers, and often round-arched windows.
18. A knob, bar or ring of metal, attached to the outside of an exterior door to enable a person to announce his presence; usually held by a hinge so that it can be lifted and allowed to strike a metal plate.
20. In ancient architecture, a terrace on the top of a house built with a flat roof, or over a porch, surrounded by a parapet wall but open to the sky.

25. A horizontal timber which serves as a base for the studs in a stud partition.
26. 1. An embankment with level top, often paved, planted, and adorned for leisure use. 2. A flat roof or a raised space or platform adjoining a building, paved or planted, esp. one used for leisure enjoyment.
27. The fittings and decorative elements of a mantel, including the cornice and shelf carried above the fireplace.
29. 1. The horizontal line at the junction of the upper edges of two sloping roof surfaces. 2. The internal angle or nook of a vault.
33. One of a number of short vertical members, often circular in section, used to support a stair handrail or a coping.
34. A strip fastened to the floor beneath a door, usually required to cover the joint where two types of floor material meet; may provide weather protection at exterior doors.
39. Any framework of a window; may be movable or fixed; may slide in a vertical plane (as in a double-hung window) or may be pivoted (as in a casement window).

*Answers can be found on page 23.*

## Advertiser News

As part of its service to the construction industry, the Michigan Concrete Association, headquartered in Lansing, Michigan, serves as a resource for technical information. The Association maintains a reference library and network to assist designers in getting the most out of their projects using the most durable, versatile, and economical building material known—concrete. For assistance on design, material application, trouble shooting, or any concern related to the use of concrete, call the MCA at 1-800-678-9622.

Seeböhm, Ltd. is a professional Architectural Conservation firm specializing in artistically significant historical properties. As a full service company we offer architects technical assistance from consulting to specialized contracting. With fifteen years experience in the field, our staff is skilled in the analysis and treatment of paint, plaster, wood and stone, with an emphasis on decorative finishes. We are proud to

offer our professional expertise to clients in Michigan and the surrounding Great Lakes States.

The Best Block Company is the largest block and split brick manufacturer in Michigan. With locations in Warren, Detroit, Ypsilanti and Jackson, we are able to offer superior service to our customers.

Standard, custom and architectural masonry block units are available.

Best Block also is a leading distributor of clay brick for architectural, or residential needs. An array of colors, textures and styles are available to you.

The Mega Mix division brings you job site manufactured mortar and grout which produces the highest quality mortar with the lowest cost in the industry.

Masonry tools, wall reinforcements and retaining wall systems are all supplied by Best Block.

The Best Block Company, a Manufacturer/Distributor of masonry products for all your building needs.



Front elevation  
with full width  
porch.



# RURAL GOTHIC

**Y**our client is a young single person who has four very difficult project requirements. They are:

- Create a home that can accommodate growth and evolution of client's lifestyle from single, to married, to family with children. Client intends to reside in home for a considerable length of time.

- Interior space should be light and airy but more traditional in the sense that spaces have defined limits, not the open "great room" concept that is prevalent today.

- Exterior should have a "traditional rural" sense but with a contemporary interpretation. This is to reflect rural setting of structure and owner's desire.

- Detail should be a part of the design concept. This detail should be evident throughout the interior and exterior of the structure and help unify and enhance the design.

*Your solution must be very creative in its approach, to address the four requirements given by the client.*

- A plan with traditional/formal organization was developed. The plan utilizes a central entry, two story foyer and an open stairway to the second floor. The main floor living space was organized off the foyer with circular, circulation to the left or right from the foyer, either through the formal living room or the den into the kitchen and then back to the foyer.

- Interior detailing reflects traditional character with the use of solid core paneled wood doors, paned windows, "built-up" door casing and base from standard shapes and a stepped plaster ceiling in the living room

- The exterior utilizes standard materials, organized and assembled to give textural variety and to recall traditional methods. The first floor siding is board and batten, the second floor dormers have three-inch exposure beveled siding. Soffits are T.&G. 1x. All the wood is stained clear redwood. The roof is a standing seam metal roof. Porch

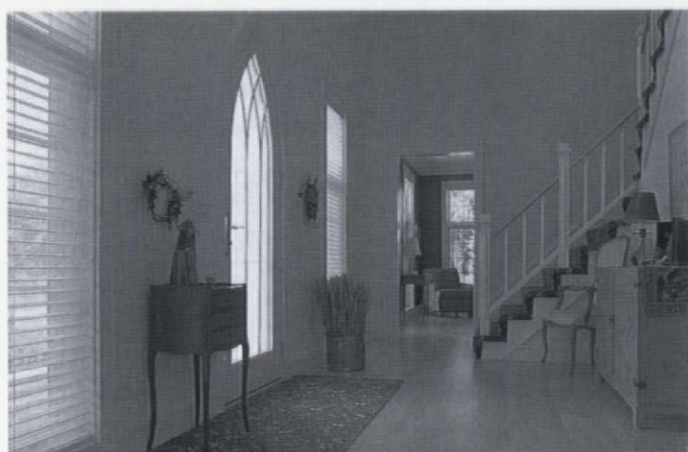
The gracious  
covered porch.







The formal living space.



Simple but lovely entry foyer.



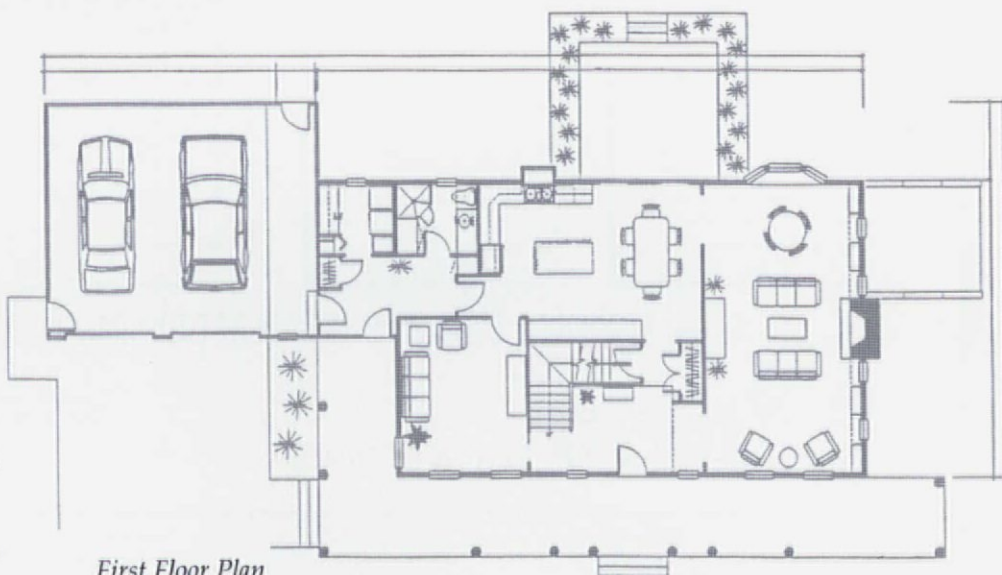
Second Floor Plan

columns, entry doors, and dormer windows recall "rural Gothic" images.

- The front entry porch faces the road and adjacent neighbors across a large landscaped lawn. The porch is an icon of "rural traditional" residential structures and also increases the mass which makes it appear larger than it actually is.

This home works beautifully as a solution to client requirements and also as architecture. It is an inspired use of historical elements in a modern approach to rural living. ▼

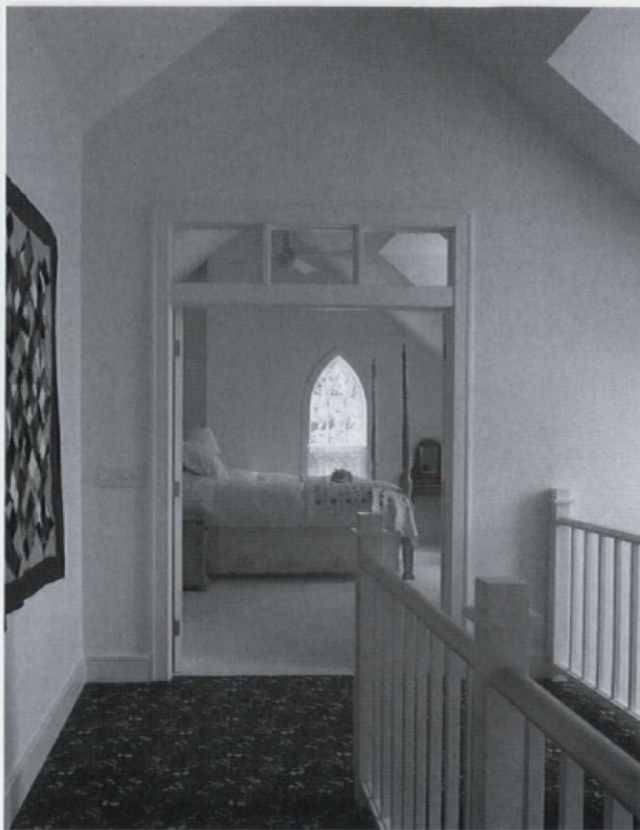
continues



First Floor Plan



Upstairs, looking  
into the master  
bedroom.



Project: Private Residence, Grand Haven, Michigan  
Architect: Oppenhuizen Architects  
Photographer: Bill Lindhout

**SPECIFICATIONS**

**SOURCES**

**INSTALLATION  
INFORMATION**

**(810)476-5559**



**GREAT LAKES  
CERAMIC TILE COUNCIL**

33505 State Street • Farmington 48335

# Build your way to the top with the BEST

## BRICK

- COMPLETE LINE: ARCHITECTURAL RESIDENTIAL
- A MULTITUDE OF COLORS, TEXTURES, STYLES AVAILABLE
- SPLIT BRICK MANUFACTURED IN OUR PLANT
- COLOR MATCHING AVAILABLE

## BLOCK

- LARGEST BLOCK MANUFACTURER IN MICHIGAN
- ARCHITECTURAL MASONRY UNITS GLAZED - BURNISHED
- ANCHOR RETAINING WALL SYSTEMS
- SPLIT-FACE BLOCK

## MASONRY SUPPLIES

- WALL REINFORCEMENTS: METAL ANCHORING, RE-WIRE
- FLASHINGS: PERMA-A-BARRIER, DURI-O-BARRIER, COPPER, PVC
- PRECAST CONCRETE, LINTELS, PATIO SUPPLIES
- MASONRY TOOLS

## MEGA MIX

- JOB SITE MANUFACTURED MORTAR AND GROUT
- GUARANTEED QUALITY AND PERFORMANCE
- STANDARD AND CUSTOM COLORS AVAILABLE
- SERVICE LARGE AND SMALL JOBS

QUALITY AND SERVICE IS "OUR COMMITMENT TO YOU"



**BEST** BLOCK COMPANY

FOR ASSISTANCE, CONTACT  
**WILLIAM J. MARTIN**  
VICE-PRESIDENT  
AT (810) 772-7000

WARREN:  
22001 GROESBECK  
WARREN, MI 48089  
810/772-7000

DETROIT  
14210 W. CHICAGO  
DETROIT, MI 48228  
313/933-8676

YPSILANTI  
3840 E. MORGAN RD  
YPSILANTI, MI 48197  
313/434-9000

JACKSON  
3342 PAGE AVENUE  
JACKSON, MI 49203  
517/782-1048



# The Secret of Getting Your Building Costs Down...

When you need a bid on a Mechanical Air Handling, Ventilating, or Air Conditioning System, go directly to the source that can give you the most competitive price and service – your SMACNA Air Handling Contractor.

With a SMACNA CONTRACTOR, you eliminate the third party markups and deal directly with those experienced, educated and capable of producing and installing an air handling system.

## Separate Air Handling Bids

- SMACNA CONTRACTORS customize the air handling system for your specific requirements.
- SMACNA CONTRACTORS provide shop drawings so other mechanical trades can properly install their work.
- SMACNA CONTRACTORS coordinate the assignment of other mechanical services without jeopardizing your control over separate bids.
- SMACNA CONTRACTORS are leaders in the field, continuously researching for better and more efficient ways to offer Mechanical Air Handling services.

SMACNA CONTRACTORS believe it is our responsibility to give our customers our most competitive price, performance, quality and efficiency. If that's what you need, give us a call.



3221 W. Big Beaver Rd.  
Suite 305  
Troy, MI 48084-2896  
(313) 649-5450  
Fax 649-2024

**It's time we utilized the utmost cooperation in developing efficient building costs.**



Large sloping skylight aligns itself over the living and sitting rooms, and stair.



## GLASS ROOF

**W**ith its dramatic sloping roof and extensive skylights, this large (6,000 square foot) home seems to be a part of the landscape. The site slopes toward Island Lake and most rooms face the water or have views of it. Mature trees surround the house and help reduce the scale of this large structure. The wood cedar siding gives the home a greater sense of belonging to the wooded site.

The long, low roof slope seems to grow out of the site.



Inside, a warm, cave-like atmosphere is enhanced by use of wood and is punctuated by shafts of daylight from the skylights above. With five bedrooms, study, library, sitting room and conversation area beyond the living and dining rooms, space is abundant and designed to provide a natural and comfortable environment. ▼



Warm, yet open, the skylight dominates the interior.

Project: Costello House, Bloomfield Hills, Michigan  
Architect: Dow Howell Gilmore Associates Inc.  
Photographer: Glen Calvin Moon





The Fireplace  
rises through the  
two-story living  
area.





View to the lake from the cupola.

# LAKEFRONT COTTAGE

View at the entry court.



**T**his cottage, completed in 1991 for a modest \$120,000, represents a life long desire of the couple to have a summer place on Lake Michigan. Married 30 years, the couple spent their honeymoon in a beach

house on Cape Cod. Since that time, almost all family vacations have been connected to water and beaches. Since the budget was limited, almost all aspects of the project evolved around the notion of making the most out of what budget would allow, and still fulfill the desire to build a reflection of the older cottages with a contemporary flavor. Simplicity and traditional Shaker design were also guiding principles during the design and furnishing of the 1,714-square-foot cottage.

The narrow lot dictated the size and location of programmed areas, but also allowed the cottage form to ramble back from the beach, and together with the breezeway connected garage, provides an appropriate cottage style arrival at the entry.

The building is topped off with an observation cupola or belvedere that provides a variety of options from sipping cool drinks and watching Lake Michigan sunsets, to the solitude of reading a book, or a tree house for future grandchildren. Access to this room is provided by a 3 1/2-foot diameter and 14-foot high circular stair, reminiscent of a lighthouse or ship's access way.

The interiors are reflective of Shaker values of purity, efficiency and order. All the walls are finished with T & G Pine paneling painted white; the ceilings are drywall with a light stucco finish; the floors are either plank oak, berber style carpet, or white glazed tile; the doors are all pine and all the trim is pine except for the oak base which matches the plank flooring.





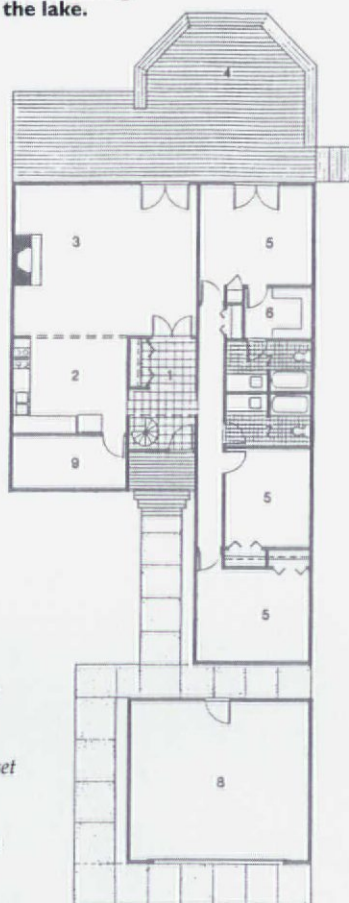
The living/dining area interiors.



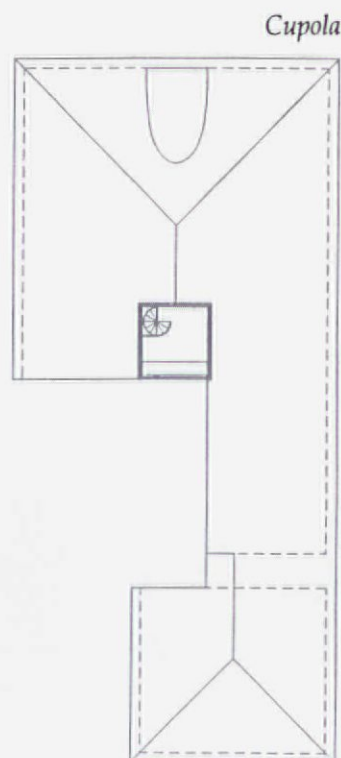
Deck and facade facing the lake.

The cottage was also designed to comply with all environmental conditions and considerations related to sand dune protection, sanitary systems along lake front property and local codes. ▼

- Floor Plan*
- 1 Entry Foyer
  - 2 Kitchen
  - 3 Living Room
  - 4 Wood Deck
  - 5 Bedroom
  - 6 Walk-In-Closet
  - 7 Bathroom
  - 8 Garage
  - 9 Utility Room



*Floor Plan*



*Cupola*



Project: Dziurman Cottage/Beach House  
 Owner: Kathy and John Dziurman  
 Location: Charlevoix, Michigan  
 Architect: John Dziurman, AIA  
 Contractor: Siegwart Building Company  
 Photographer: John Dziurman, AIA





# BACK TO BASICS

Retaining walls define front and back yards.

**C**harlie and Carol Henry wanted to replace their existing cottage with a small, simple structure that maximized views to the lake and took full advantage of the premium lake front site located on the north

end of Lake Elwood. The lake frontage is framed by a large peninsula and island that are dense with mature red and white pine.

The structure features large laminated wood roof timbers and ash paneled cathedral ceilings. The form and lines of the house are simple, clean and massive. The cruciform plan features a large stone fireplace and bleached white hardwood floors throughout. The exterior is sided with cedar siding and redwood trim with large full circle windows located in each gable end. The plan of the living area is open and inviting for informal gatherings of friends and family on both the upper and lower level. The lower level is designed to accommodate guests comfortably and separate from the master bedroom area on the upper level.

The site is beautifully landscaped to complement the building structure and rustic natural beauty of the tall pine stands which border the property. ▼







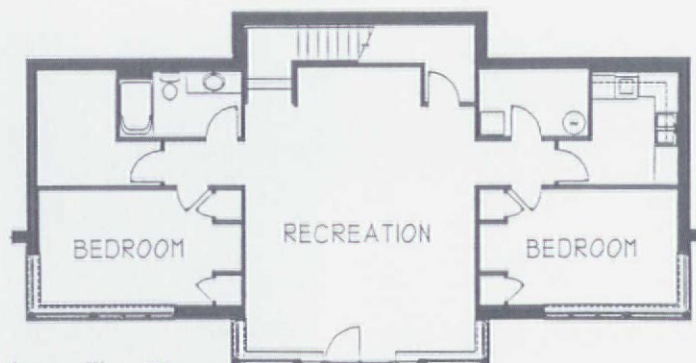
Lakeside elevation floats on the site.



Strong roof forms and balconies create proportion and scale.



Upper Floor Plan

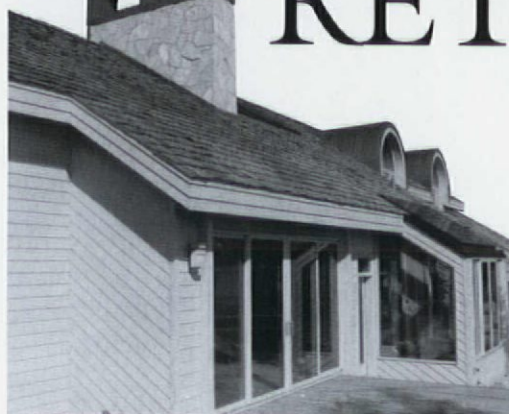


Lower Floor Plan

Project: Henry Cottage  
 Location: Lake Elwood near Iron Mountain, Michigan  
 Architect: Blomquist & Associates, Architects  
 Landscape Architect: Fred Cheshire  
 General Contractor: Hugh Shanks  
 Interior Decorator: Ruth Morell  
 Photographer: Mark Blomquist, AIA



# NORTHERN RETREAT



**L**ocated in northern Michigan on the sandy shores of Lake Charlevoix, this contemporary style home fits comfortably into the environment while combining the utmost in style and function. Situated with a magnificent south facing view of jewel-toned, sparkling waters, the architect

used every opportunity to take advantage of the site's spectacular location.

On the exterior, taupe tone cedar siding harmonizes with the surrounding landscape, while copper, arched top chimneys and windows accent natural cedar shingles. Summer breezes and interplay of light and shadow is constantly captured by the many windows and skylights. A wrap-around deck and terrace, surrounded by clear glass railings, provides a totally uninterrupted view of the lake. Landscaping interweaves with the natural beauty of the setting.

Inside, the great room is flanked by a sunken bar and divided by a double opening fireplace wall. A summer gazebo, just a hallway away from the great room, has mitered clear cedar ceilings and a tile floor. Numerous skylights and windows make this a favorite room to enjoy a hot summer evening with a cool mint julep. An indoor/outdoor pool and spa complete the necessary amenities for grand scale entertaining.

The copper clad entry canopy.







Extensive outdoor living space complements this large home.



Adjoining guest house matches the main house architecture.

*An indoor/outdoor pool and spa complete the necessary amenities for entertaining.*

Providing a private get-away, the master suite, including bedroom, super bath, study and office area, completes the living area on the first floor.

On the second floor, two guest bedrooms (each with its own bath) connect via a bridge to the hobby area.

An adjacent guest house provides the crowning touch of elegance to this northern Michigan year-around retreat. ▼



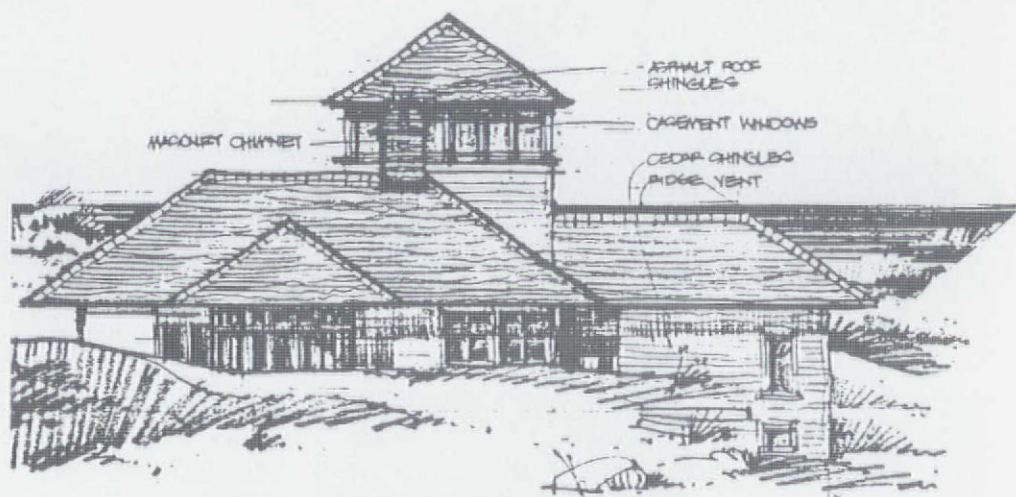
Indoor/outdoor pool faces the lake.



The sunken bar and indoor spa from above.

Project: Private Residence  
 Architect: Jack Begrow, AIA  
 Builder: Hans Marten  
 Landscape Architect: Maureen Parker,  
 "Common Ground"  
 Photographer: Jack Begrow, AIA





# BENZIE COUNTY BEAUTY

The graceful red roofs and deck hover above the dune.

A beautiful Lake Michigan Dunes area in Benzie County, Michigan is the location of this new summer cottage. Its whitewashed, red roofed, 19th century lighthouse and coast guard buildings complement the barren coastal beauty of this

northern shoreline making it one of the most photographed places in the state. These clapboard buildings quietly dominate the landscape in tiny groupings of red roofed pavilions that seem to have blown up on shore. They represent a unique architectural context and the obvious inspiration of this new residence.

Architecturally, it was important that the new house blend in with this unusual environment; to site the building just over the edge of the dune and to allow the little village of red roof forms to appear from behind.

Programatically, the residence is a cottage in a traditional Michigan sense, with porches, a bunk room, a galley kitchen, a central massive hearth, even a lookout tower.



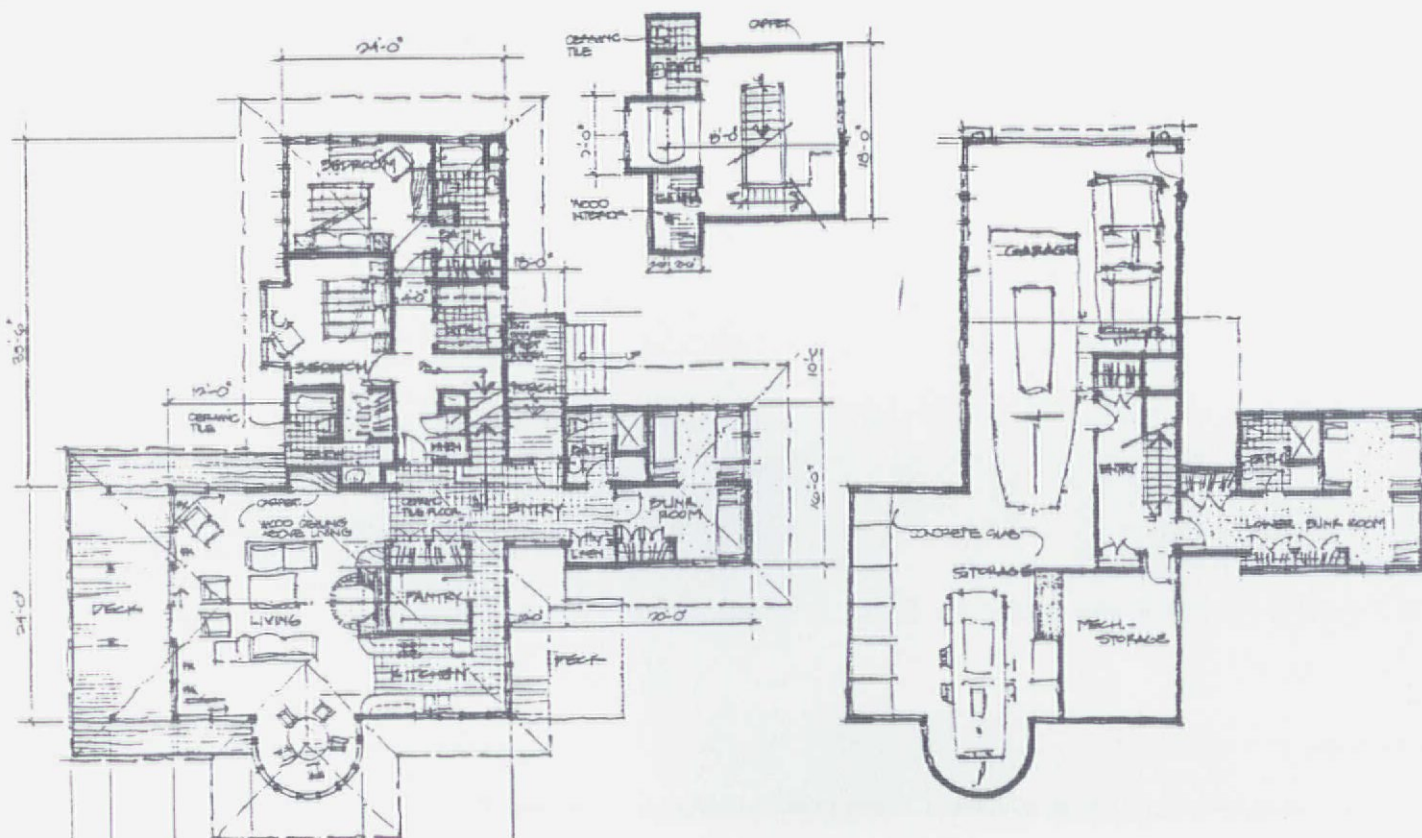
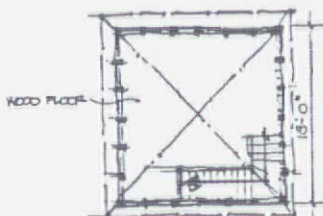


With its cherry floors, beach stone fireplace and cedar siding and trim, it was important to the owner to create a building as regional as possible, to be built not only by local craftspeople but with their local materials as well. ▼



Project: Private Residence, Benzie County, Michigan  
 Architect: AAI, Inc.  
 Engineering: CTM Associates  
 Construction: Heartwood Custom Builders  
 Photographer: Dietrich Floeter Photography

The entry elevation and the view to Lake Michigan beyond.







Farmyard detail is authentic right down to the livestock.

# FARMHOUSE REVIVAL

The red barn stands in contrast to the white house.



**S**teve and Anna Easudes wanted to create an intimate rural place that could accommodate animals, fruit trees and kitchen gardens. The place should feel as if it has been there for a very long time. The early Greek Revival homesteads with small outbuildings and modestly proportioned

houses were particularly appealing to the Easudes. Steve was particularly interested in the "Plymouth House," a Greek Revival house in Greenfield Village. This house had simple vernacular additions added over time.

With drawings of the Plymouth House from the Henry Ford Archives and after visits to over 20 Greek Revival homesteads from Marshall, Michigan to Plymouth, Michigan, a site plan and architectural design were developed. The house and barn sit well back from the road. The white house is silhouetted by the red barn and a giant field oak. The story-and-a-half main house has a hipped roof side wing common in Midwest Greek Revival with vernacular kitchen and mudroom wings. The rooms are simple and extremely well lighted with deep windows on usually two walls. Furniture replaces closets throughout the house. In the large kitchen only the sink is attached to the wall. The kitchen garden is just out the back door next to the rear porch and the sheep can be seen through the north kitchen window. ▼

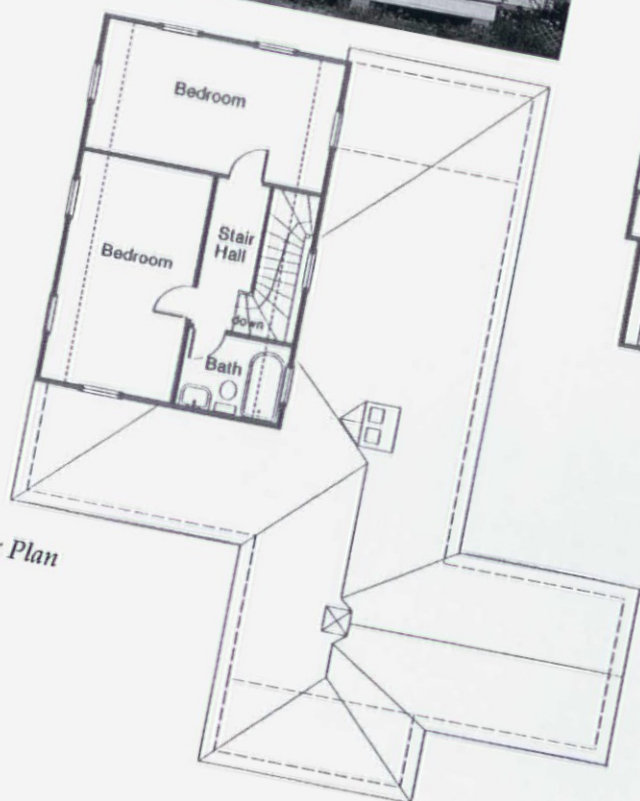




The traditional farmhouse porch announces the entry.



Back porch from the kitchen is the entrance to the garden.



First Floor Plan



Second Floor Plan

Project: Easudes Residence, Chelsea, Michigan  
 Architect & Engineer: Rueter Associates Architects  
 Builder: Brink Vachon Inc.  
 Photographer: Rueter Associates Architects





# VERTICAL ELEMENTS

The entry area glows at dusk.



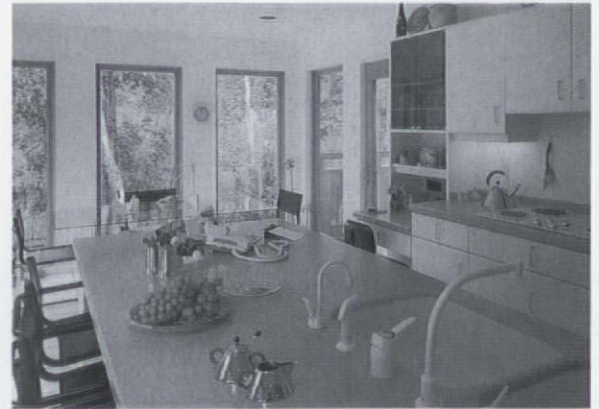
**T**his professional family requested minimum disturbance to the wooded, sloping site and pond. Cascading volumes stepped down toward the woods with major spaces having views, decks and balcony on the privacy side. Light and airy spaces are

achieved with vertical lantern fenestration to enhance loft spaces. A spiral generated staircase provides convenient and dramatic vertical circulation to the upper bedrooms and lower activity areas.

Staggered garage doors faced with vertical cedar siding reduce the scale and integrate the circular visitor drive. Basic landscaping and site lighting elements reinforce the beauty of the site. Total site sensitivity, modulation of volumes and a fresh organization of living spaces suggest that this residence is in total harmony with its site.

The home contains 3,700 square feet of open, airy space on many levels and takes advantage of sun angles to enhance the interiors. Sun and shade decks are carefully integrated into the massing of the house and offer views to the pond which borders the property. ▼

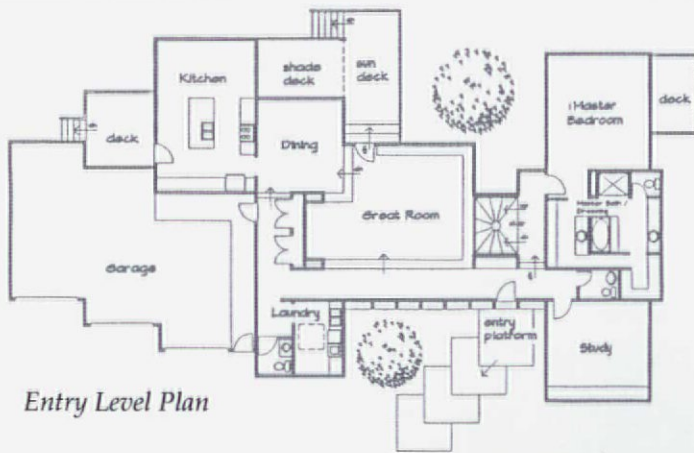




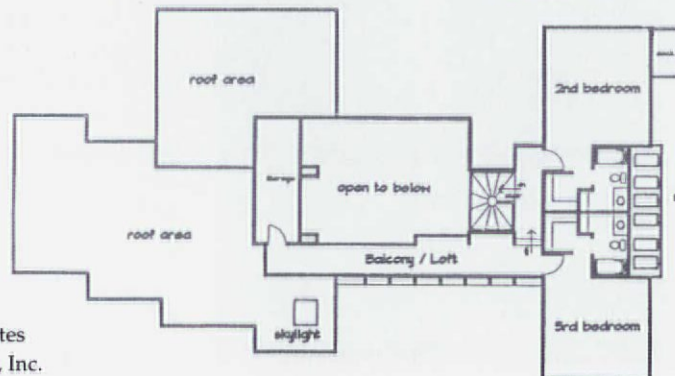
The kitchen is full of light from the vertical windows.



The spiral stair floats above the great room.



Second Level Plan



- ACROSS—3. Portico 4. Lattice  
5. Panicle 6. Gazebo 9. Siucco  
11. Aulia 13. Sill 14. Vestibulum  
17. Frigidarium 19. Prothyron  
21. Mansard 22. Rowhouse  
23. Portecochere 24. Sleeper 25. Step  
28. Sheddormer 30. Rafter  
31. Newelpost 32. Trellis 35. Gable  
36. Federal 37. Hatch  
38. Fenestration 40. Wainscot  
41. Sailbox  
DOWN—1. Shingle 2. Artscandrat  
3. Palazzo 6. Gambrel 7. Wigwam  
8. Villa 10. Outlooker  
12. Gingerbreadstyle 15. Gutter  
16. Italianate 18. Knocker 20. Solarium  
25. Soleplate 26. Terrace  
27. Mantelpiece 29. Ridge  
33. Baluster 34. Threshold 39. Sash

Project: Private Residence,  
Flint Township, Michigan  
Architect: Tomlinson Harburn Associates  
Photographer: Arcadia Photographics, Inc.





# NATURAL EXPANSION

The expanded south exposure rambles gracefully across the site.



**T**his is a prime example of how a relatively modest expansion can turn into a spectacular renovation if given the chance to exploit house and site to their fullest potential. The 20 year-old house had served the owners well, providing compact yet acceptable space for raising two children, but was now simply worn out. Success in both family and business brought with it a new emphasis on

entertaining and improving the quality of everyday life.

Because the original house was built into the side of a hill, all natural light entered the house from one direction only, except for the main entry that was carved into the ground to allow access from the north. Extensive landscaping and other site improvements, such as the swimming pool and a private natural lake, had transformed the site into a beautiful, serene refuge for owner and wildlife alike. The only thing lacking was an updated house worthy of such surroundings.

Primary needs for the new house were that it be larger for entertaining, with plenty of light (the original kitchen and baths were windowless) and magnificent views from every room (only the living room and porch had adequate views of the site). The master bedroom was due for a well deserved expansion with a few luxuries. Most importantly, the owners wanted to feel like they were living among the trees and nature, rather than just looking out at them from an elevated perch.





The sun-filled living area.

The result is a house where the exposed exterior walls are fully transparent, sheltered by a canopy of wood and plaster, held up by treelike forms with outstretched branches. The sawtooth design of the south exposure was a response to the 30-60-90 degree angles of the existing pool and decks and a desire to obtain views of both pool and pond, while orienting

the main glass areas away from due south. Abundant light is dropped into the landlocked rooms by way of skylights and two new light wells over kitchen and entry. Views are maintained from every room; even the sauna and master shower provide stunning vistas through clear glass panels. Finishes are deliberately simple, yet natural, so as not to

**continues**

## **WHICH BENEFITS DON'T YOU WANT FOR YOUR PROJECTS?**

*design flexibility \* durability \* economy \* energy efficiency \* fire resistance*

*low or no maintenance \* noise reduction \* pest resistance \* stable supplies*

Relax. When you build with CONCRETE, you get all of these benefits and more. If you want to give your client a true value-added design, CONCRETE is the natural choice. Get more out of your designs with the proven long-term performer.

**CONCRETE - the building material you can live with!**

Michigan Concrete Association - 1/800/678/9622  
2500 Kerry St., Lansing, Michigan 48912







The remodeled kitchen is open and airy.

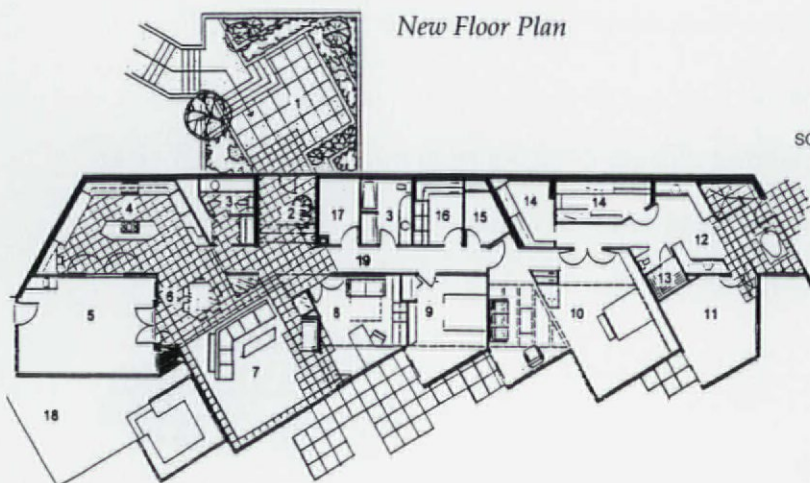
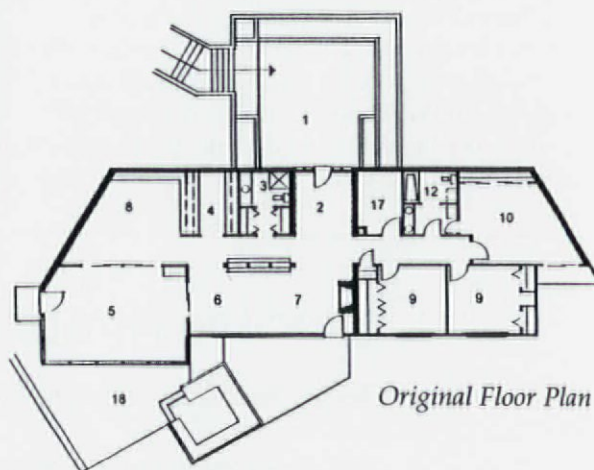
Project: Private Residence, Southwest Michigan  
 Architect: Marshburn/Bunkley Associates  
 Interior Design: Stephanie Olson, ASID  
 Structural Consultant: Stuart Eddy, PE  
 Photographer: Jeff Mitchell Photography



Views into and out of the master bath are stunning.

upstage the surroundings. Heated French limestone floors emerge from lush carpet and extend to the outdoors.

In the end, most original walls and roofs were replaced with new, leaving only the three-season porch and entry field stone walls as a reminder of what used to be. ▼



#### Legend

- |                      |                   |
|----------------------|-------------------|
| 1 Entry Court        | 10 Master Bedroom |
| 2 Entry              | 11 Exercise Room  |
| 3 Bath               | 12 Master Bath    |
| 4 Kitchen            | 13 Sauna          |
| 5 Three Season Porch | 14 His Closet     |
| 6 Dining             | 15 Her Closet     |
| 7 Living             | 16 Laundry        |
| 8 Den                | 17 Mechanical     |
| 9 Bedroom            | 18 Pool Deck      |



# UNILOCK® *the Statement in Stone*



BRUSSELS BLOCK® DRIVEWAY™



CLASSICO® WALKWAY



SERIES 3000® PATIO

PLEASE SEND ME FREE SAMPLES, PRICING AND SPECIFICATION INFORMATION.

NAME \_\_\_\_\_

COMPANY \_\_\_\_\_

CITY \_\_\_\_\_

STATE \_\_\_\_\_ ZIP \_\_\_\_\_

PHONE \_\_\_\_\_

Add the "Old World" Beauty of Unilock to your building plans. Perfect for patios, driveways, walkways, pool decks, garden areas or retaining walls. Send for free samples, pricing and specification information.

**1-800-336-4056**

12591 Emerson Drive • Brighton, MI 48116

**3 TIMES STRONGER THAN POURED CONCRETE - GUARANTEED FOR LIFE !**



# l a n d m a r k s

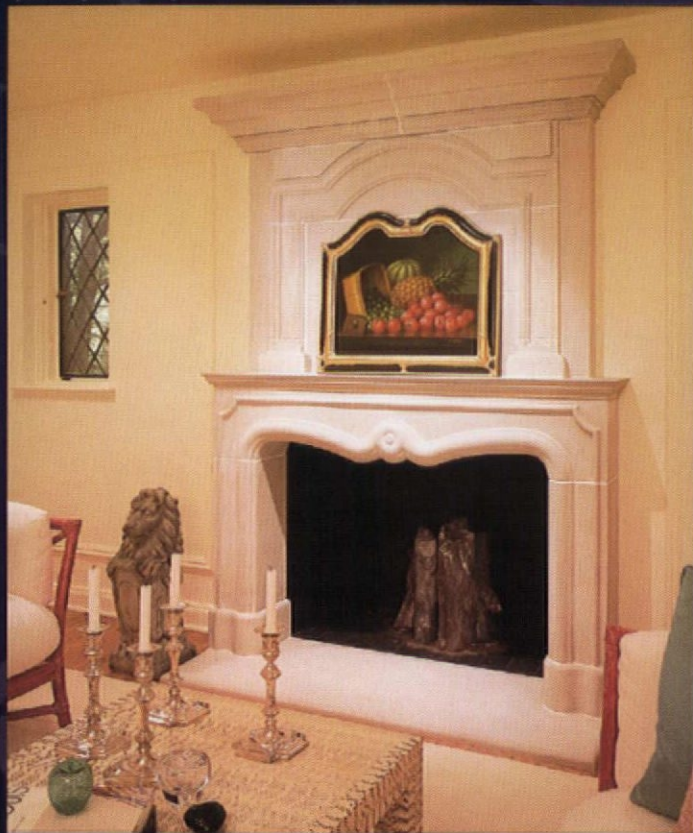
By Balthazar Korab



THE HOUSE THAT TOM BUILT...

or is building?





*The classic beauty of limestone...*



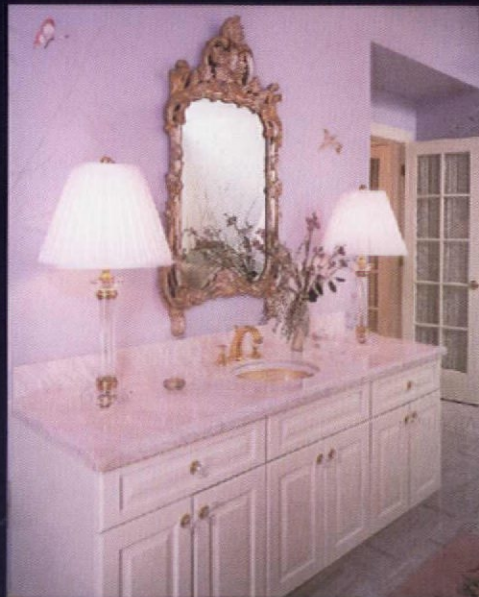
*The durability of granite...*

## DIXIE CUT STONE & MARBLE, INC.

6128 Dixie Highway  
Bridgeport, Michigan 48722  
(517) 777-1890  
(800) 968-8282  
Fax (517) 777-7866



*The majesty of limestone...*



*The elegance of marble...*

*...The Natural Choice*



# The Fireblocker



Specify Levy lightweight expanded slag masonry units and you give any structure the safety benefits of high-temperature fire resistance – with no significant increase in cost. And because they're so light, masons are able to lay more units every day, resulting in extremely high productivity with reduced labor and transport costs. So you end up with a more satisfied client.

- Expanded slag has a uniquely high fire rating – higher than any other masonry unit material
- Fire rating certified by Omega Point Laboratories, San Antonio, Texas (ASTM method E-119)
- 20% lighter than normal medium-weight block

Levy block is made from 100% expanded slag, a byproduct of steel production. So while its unique high strength and fire resistance are protecting your customer's investment, it is also helping to protect the environment.

*For more information, call the Levy sales department at (313) 843-7200, or write us at 8800 Dix Avenue, Detroit, MI 48209.*



EDW. C. LEVY CO.

**Nothing Builds Better Block  
Than Levy Lightweight Blend.**