

MSA Bulletin

MSA

Michigan Society of Architects

American Institute
of Architects

March/April
1991

ARCHITECTS ARE DOING IT ALL OVER THE STATE!

Michael A. Marshburn, AIA,
President, MSA

Getting involved that is! I am proud to be a member of a profession of "Doers." Architects are not happy to sit back and let others shape their lives; they get involved in professional, civic, school, church, and governmental activities that enhance the quality of life for all.

Almost every year this newsletter carries a lead article from the current president pleading for you to get involved with MSA. I am pleased to have experienced overwhelming support and a willingness to accept responsibility from all areas of the state when I have asked for help in chairing committees for 1991. Almost without exception the response has been "Thank you. It will be a privilege to serve." Equally pleasing is the way those same people have begun to serve. Agendas are being drawn and strategies formed for real action. Thank you for your response!

With the excellent, responsive leadership you have in your chapters and those you have sent to serve on the MSA Board, 1991 will be a good year. You, the members, will benefit from the diversified involvement and programming that MSA finds itself involved in this year. We are in a better position now than we have been in years to influence the success of our profession; your participation in that future is welcomed.

I have had the good fortune over the last couple of months to have been able to review the committee structure

of MSA and appoint chairpersons to those positions. MSA has, thankfully, a wealth of talent from which to choose. These are my choices to serve all of us in 1991:

1991 MSA COMMITTEES/TASK FORCE

A. Professional Excellence (Preparation of the individual) Design Conference

Dick Fry/Nelson Nave
MSA Drafting Competition
Ken Brower - Jan Myers
Professional Development
Steve Whitney
Professional Practice
Rocco Romano
Vision 2000 - Carl Roehling
I.D.P. Program - Steve Whitney

B. Marketing & Influence (Involvement in issues) AELC-

Dan Redstone - Dale Grainger
Jim Shane - Don Koster
APAC - Steve Vogel
Interior Design Licensing
Graham Dickens
Magazine & Publications
Tim Casai
Past Presidents Council - Dick Fry
QBS - Hal Sibley - Auldin Nelson
State Bureau of Facilities
Carl Roehling

C. Membership and the Society (Members' Needs)

Beaubien House Art Commission
Graham Dickens
Consent Decree Compliance
Fred Hall
Convention - Paul Bowers
Future Leaders - Mike Callahan
Handbook - Bob Hill

Long Range Plan
Dick Fry/Steve Whitney
Membership/Dues
Linc Poley/Bob Hill
Mid-Summer Conference
Dick Mitchell
Recognitions - Evie Asken
Staff Operations - Dick Fry
Vice President's Roundtable
Steve Whitney
Honor Awards - Art Smith

D. Fire Safety Rules Committees

Schools, Colleges - Dick Fry
School Dorms - John Jensen
Health Care - Jim Hackenberger
Penal - Les Tincknell
State Owned Facilities
Roger Meintz
Places of Assembly - Jim Velthoven
Adult Foster Case - Kim DeStigter

Along with these Committee Chairs and their committees, we are fortunate to have a hard-working, dedicated professional staff to support all of our volunteer efforts. They are the glue that holds an organization like this together. We are grateful for their efforts.

Supporting MSA is the Michigan Architectural Foundation (MAF) under the capable presidency of Jim Shane. MAF is leading the way to public education and awareness for our profession. We look forward to great strides from MAF in 1991.

You will be hearing from these people this year. They would like to hear from you. Get involved if you want. If you don't, rest assured the business of the Society in good hands and backed with an enthusiasm to match. Thanks again to all who are willing to serve!

ARCHITECTS' LICENSING ACT

Rocco Romano, AIA

A Joint Professional Licensing Committee (JPLC) consisting of Michigan Society of Architects (MSA), Consulting Engineers Council (CEC), Michigan Society of Professional Engineers (MSPE) and Michigan Society of Registered Land Surveyors (MSRLS) members has worked diligently since June 1990 to develop and give relevant meaning to Article 20 of the Professional Practice Act for Architects, Engineers and Surveyors. Some important highlights of this revised legislation include increasing the levels of competency, visibility, and accountability in the various professions. Additionally, the Auditor General's Report dated March 31, 1989, and the Attorney General have requested clarification and/or changes regarding a number of issues in the Practice Act. The JPLC has completed its work and has asked for support from the four respective organizations. The committee has a continuing dialogue with the department of licensing and regulation and has recognized early on that our strength is in our common interests and responsibilities. The reality is most complaints and violations are caused by weak enforcement and practice by non-licensed individuals and/or firms. This philosophy helped establish the committees goal "To elevate the stature of the allied professions as key elements in the design process and in the protection of the health, safety, and welfare of the public. Our strategy is three-pronged:

- Revise the Law - Article 20
- Police the Professions - identify potential practice violations
- Educate - profession, government, public

All three prongs must have strength for the strategy to be successful. The following definitions are a sampling of the revised Article 20.

"Practice of Architecture" means the rendering or offering to render professional services in the planning, design, design coordination, material selection, review of material, or testimony before any public or private

body for the proposed or actual construction, enlargement, alteration, modification, repair or change in use of any life safety system, building or group of buildings and the space within and surrounding such public or private buildings, which have for their purpose, or have a capacity for, human occupancy, habitation, shelter or use for which such service may protect the health, safety or welfare of the public and provide for the protection of property; the services referred to include preparation of preliminary studies, plans, designs, drawings, bidding or construction documents, specification; review of technical submittals; administration of construction contracts, or observations, monitoring or certification of construction activities.

"Practice of Engineering" means the rendering or offering to render professional services in the planning, design, design coordination, material selection, review of material, or testimony before any public or private body for the proposed or actual construction, enlargement, alteration, modification, repair or change in use of any engineering project, building, building system, life safety system, utility, structure, product, machine, equipment, or process which have a purpose or use for which such service may protect the health, safety or welfare of the public and provide for the protection of property; the services referred to include preliminary studies, plans, designs, drawings, bidding or construction documents, specifications; review of technical submittals; administration of construction contracts, or observations, monitoring or certification of construction activities.

The time table for implementation of the proposed revision is fairly short and is based on legislative session periods. Therefore, if you would like additional information please contact the MSA headquarters.

JPLC Committee Members include Deem Boldyreff, PE; George Ehler, PE; Bill Soderberg, LS; Robert Wade, PE, LS; Ben Tiseo, AIA, DC/AIA Director; Jeff Budday, AIA, DC/AIA Member; and Rocco Romano, AIA, MSA Director. The JPLC also has a statewide chapter network with one representative from each MSA Chapter receiving the committee actions for their input and information.

EXECUTIVE DIRECTOR'S NOTES

A small message regarding your membership in the AIA. We know that some of you are experiencing a short cash flow right now. We also know that the cost of belonging to all three levels of AIA (a requirement for membership) adds up pretty fast and makes you think twice before signing the checks. We believe that retaining your membership is vitally important when there is a downturn in the economy. Based on the importance of networking, seminars, professional practice and legislative issues these are some of the ways AIA tries to help you in this downturn.

There is another option open for paying your dues other than writing a check. National AIA allows you to charge your dues on your credit card which is something MSA has done for several years for your state and local dues. We want you to keep those three initials after your name...call MSA if we can help. Remember national dues were due in January and MSA & Chapter dues are due by March 31, 1991.

GREENER PASTURES?

(reprinted from the Arch. Record through the courtesy of the Boston society survey)

Thinking of pulling up stakes and striking out for greener professional pastures? with work soft in many locations, you may be considering just that. what are your chances of success? Richard Fitzgerald, executive director of the Boston Society, decided to find out.

He prepared four basic questions: What is the current market status in your area (five choices, from boom to bust)? Is that status improving, worsening, or stable? Where do you think the hot markets are? And should architects move to your region or stay put, or call? Fitzgerald mailed about 60 of his one-page questionnaires to AIA chapters nationwide and, within a week, had received 39 back.

Boom: Idaho, Wisconsin, Hawaii. Bust: Arizona, Washington, D.C.; and New Mexico. Eleven chapters reported steady growth, but four of those - Detroit, Seattle, Pittsburgh, and Iowa - predicted that conditions might worsen.

(Executive Director Notes Cont.)

There was no consensus on where hot markets are, though suggestions ranged from Mars to Minneapolis. Several respondents suggested that Pacific Northwest. Portland and Seattle did report "purring" markets, but neither was convinced of market strength or depth.

Thirteen chapters are in declining markets, nine in flat. Most of both types were in the East, Midwest, and Southwest, although Houston reported improving conditions (as did central Oklahoma and Oakland, California).

A whopping 28 chapters urged everyone to stay put. Eight chapters - up, down, and flat - suggested called for information: Oakland, Michigan/Detroit, Portland, Oregon, Utah/Salt Lake, Baltimore, Houston, Louisiana, and Eastern Oklahoma.

Surf's up: the only state suggesting architects should move there - after securing a job - is Hawaii. Peter D. Slatin.

MSA HANDBOOK

GOOD NEWS. Fall of 1991 MSA will publish a handbook of members.

Within a few days members will receive a short questionnaire from MSA requesting you verify your address, firm, telephone and fax numbers. The membership directory will be alphabetized with member name, type of member, firm and address, city, zip, telephone and fax number and chapter designation.

In order for this handbook to be the valuable tool you need, please complete the questionnaire as soon as you receive it. Each member of MSA will receive the handbook as a membership benefit.

We will again publish **PLACEMAKERS** in **PLACE** magazine - this directory is aimed at your clients and will be reprinted and mailed to anyone calling for information on hiring an architect. It is also mailed to our **PLACE** mailing list which includes CEO's, facility managers, chambers of commerce, libraries, state legislators, mayors and city managers, just to name a few.

NATIONAL AIA GRASSROOTS

MSA President Mike Marshburn, AIA, VP Steve Whitney, AIA, Regional Director Tom Lucas, FAIA, DC President Jerry Shea, FAIA, DC VP Bob Ziegelman, FAIA, and Rae Dumke, Hon. AIA participated in the 1991 Accent on Architecture Celebration.

Nationally recognized advocates James Brady and architectural historian Dr. Vincent Scully joined eminent architects Charles W. Moore, FAIA, and I.M. Pei, FAIA, in celebrating architecture's unique contributions to society at the AIA awards gala at the National Building Museum, Washington, D. C.

Speakers and guests at the event paid tribute to the professional's top honorees: Moore, the 1991 AIA Gold Medalist, and 1991 recipients of the AIA Honor Awards, AIA Twenty-Five Year Award, and AIA Architectural Firm Award.

Other Michigan delegates to Grassroots included Al Kochanowski, AIA and Tom Mathison, AIA, Grand Valley; Marc Rueter, AIA and Lorri Sipes, AIA, Huron Valley; James Morrow, AIA, Mid-Michigan; Paul Heupel, AIA, Upper Peninsula; and Jon Rambow, AIA, Western Michigan. Special guests were Tina Bassett, Public Member to the AIA Board from Detroit and grassroots seminar speaker Gene Hopkins, AIA. Hopkins represented Huron Valley for the children's board game they have developed and MSA's QBS program.

MEMBERSHIP STATISTICS

Women now make up 8.6 percent of the total AIA membership. Here is a breakdown of membership categories

	Regular	Associate	Emeritus	Total
Women	2,879 (6.5%)	1,880 (23.9%)	63 (1.5%)	4,822 (8.6%)
Men	38,877	5,905	2,838	47,620
Unknown	2,053	62	1,370	3,485
TOTAL	43,809	7,847	4,271	55,927

DELEGATES TO AIA CONVENTION

The 1991 AIA national convention and design exposition will be held in Washington, D.C. May 17-20 at the Washington Convention Center. The theme is "1991 Issues."

On Thursday, May 16 (the day before the convention starts), five national all-day workshops will be offered at rates below what they normally cost at other times during the year. The three and a half days of the convention itself will see 30 professional programs, five specialty breakfasts, including the MSA Regional breakfast on Saturday, May 18, and more than 40 one-hour consultation sessions with 12 participants in each.

Three convention themes topics are dedicated to specific issues. Saturday, May 18, "In Design" features Robert Venturi, FAIA, as the keynote speaker. Sunday, May 19, focuses on "In Community" with Rod Hackney, Hon. FAIA, Charles Correa, Hon. FAIA, and Andres Duany, AIA, as keynoters. Monday, May 20, "In Environment" is highlighted by speaker Amory Lovins of the Rocky Mountain Institute.

The headquarters hotel is the Grand Hyatt opposite the convention center. MSA will also use the Grand Hyatt as their headquarters. We are also trying to line up lower priced accommodations...if you are interested in other accommodations please contact Rae Dumke, Hon AIA at MSA.

Detroit chapter members wishing to serve as delegates at their own expense please call or write Chapter headquarters prior to May 1.

1991 BUILDING ARTS SOFTBALL LEAGUE

The league's sixth year is approaching and we are looking for any Architectural, Engineering, C.M./General Contractors or Developer's offices who may have an interest in joining our expanding league for this summer. Currently we have four divisions which are Southfield, Troy-Bloomfield, Livonia/Farmington/Birmingham and Detroit Area (Downtown). For more information contact Bill Martin at 351-4500 (Barton-Malow).

STUDIO WORKS IN PROGRESS

The Beaubien House Art Commission (a committee of the Michigan Architectural Foundation) and the School of Architecture of the University of Detroit Mercy are pleased to present "Studio Works in Progress" - a display of student work from the school's architecture studios.

This exhibit is the next in a continuing series featuring area architectural schools and will show the relationship between students initial sketches and their completed designs.

An opening reception will be held on Thursday, April 18, 1991, at the Beaubien House from five o'clock until seven o'clock. All are invited to attend. The exhibit will be on display during the business hours of the Beaubien House April 19 - May 31.

Beaubien House Art Commission:

F. Graham Dickens
William Hartman
Balthazar Korab
Ray Williams
Ralph Youngren
Rae Dumke

RECONSTRUCTION OF KUWAIT

With the end of hostilities in Kuwait, there now exists the need for massive reconstruction. There is a high demand of architects and other professionals who can provide assistance. It has been unofficially estimated that the U.S. will receive as much as 70% of the contract for these services. The AIA is actively involved in offering assistance to the government of Kuwait on behalf of our members. The AIA is pursuing a variety of contracts in this regard and will keep you fully informed of progress.

Companies can mail their product literature and reconstruction proposals to the Kuwaiti Government reconstruction office: Kuwait Coordination and Follow Up Center, 1510 H Street, N.W., Washington, D.C. 20005. ATTN: Dr. A. Al-Awadi. Other offers exist for reconstruction. Contact MSA for additional information.

"M AWARDS" & OTHER NEWS

Five Michigan building projects and their architects were recognized for masonry design excellence in the sixteenth annual "M awards" program. Sponsored by the Masonry Institute of Michigan in cooperation with MSA, the awards were presented on March 2, 1991.

MSA President Mike Marshburn made the presentations with Masonry Institute President Mike Navetta.

The winning architectural firms and projects were:

- Luckenbach/Ziegelman and Partners Inc., of Birmingham, for the Michigan National Corp. HQ, Farmington Hills.
- Neumann/Greager & Associates, Southfield, for the Addition to Mr. & Mrs. John Rakolta, Jr., Residence, Bloomfield Hills.
- Kenneth Neumann/Joel Smith and Associates, Inc., Southfield, for the City Center Office Building, Southfield.
- SH&G Associates, Inc., Detroit, for the BASF Corp., Southfield.
- Straub Associates/Architects, Troy, for the Saint Paul of Tarsus Catholic Church, Mt. Clemens.

The projects were juried in Memphis by Donald Miller, AIA; Frank Ricks, AIA; and Granville Taylor, AIA.

Newly elected 1991 officers of the Masonry Institute include Roy A. Seelbinder of Troy as Chairman; Mariano "Skip" DiGiovanni, Vice Chairman; John Robovitsky, Secretary; Chuck Wilson, Treasurer; John LaRue, Assistant Secretary; and Brian O'Toole, Alternate.

The Masonry Institute's administrative and educational activities are directed by President Mike Navetta and Daniel Zechmeister, PE, Executive Director and Staff Structural Engineer.

FIND YOUR PLACE IN PLACE!

Tim Casai, AIA

The Editorial Committee is on a search for the finest work of MSA architects! By submitting your best projects to PLACE Magazine, you show support for this important project, and at the same time you show your stuff to potential clients. We are pleased to report that feedback to MSA Members from those who receive PLACE is positive and is growing with each issue. But we need your submittals.

The editorial calendar has been expanded into 1992, with some great new topics.

The calendar with submittal dates is as follows:

- Places to Work/Urban Fabric Summer '91 - (4-26-91)
- Places to Live Fall '91 - (7-26-91)
- Places to Learn/K-12 Schools Winter '92 - (10-25-91)
- Labs and Research Spring '92 - (1-24-92)
- Small Firms Summer '92 - (4-24-92)
- Places that Heal/Medical Facilities Fall '92 - (7-24-92)

The Summer '91 issue featuring Places to Work/Urban Fabric is a wide open category for which we expect to receive many varied submittals. It is not limited by building type. We only ask that projects relate to fabric of our cities and towns. So search that slide file and find your place in an upcoming issue of PLACE!

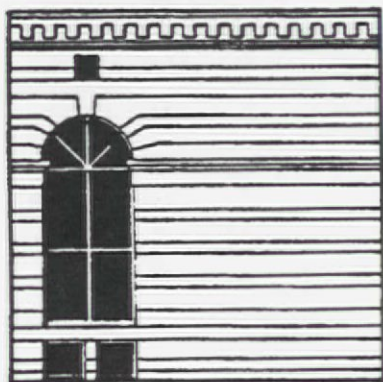
And don't forget to tell your local suppliers that you saw their ad in PLACE. With the economic slowdown it helps a great deal for current and potential advertisers to know that they are reaching their target audience.

See you all in the next issue, and in the '91 edition of PLACEMAKERS.

PLACEMAKERS RATE CARD

Placemakers directory

In its Fall, 1991 issue, *Place* magazine will be including a directory of Michigan architectural firms. *Placemakers* will serve to group the diversified specialties of architecture into a resource for the building trade as well as for clients in need of architectural services. In case you haven't heard of *Place*, it is a Michigan Society of Architects publication. Each issue of *Place* specializes in a specific aspect of architecture and is distributed to builders, legislators, mayors, chambers of commerce, school districts, facility managers, CEO's, and building owners - all of those who are the significant of Michigan's building scene.



PLEASE PRINT OR TYPE

FIRM NAME _____

ADDRESS _____

ZIP _____ COUNTY _____ PHONE _____

Yes, I would like to be listed in *Placemakers* Directory in the Fall 1991 issue of *Place* magazine under the following sections:

<input type="checkbox"/> Airports Contact _____ AIA _____ FAIA _____	<input type="checkbox"/> Hospitals and Clinics Contact _____ AIA _____ FAIA _____	<input type="checkbox"/> Office Buildings Contact _____ AIA _____ FAIA _____
<input type="checkbox"/> Architectural Photography Contact _____ AIA _____ FAIA _____	<input type="checkbox"/> Hotels & Resorts Contact _____ AIA _____ FAIA _____	<input type="checkbox"/> Office Interiors Contact _____ AIA _____ FAIA _____
<input type="checkbox"/> Banks Contact _____ AIA _____ FAIA _____	<input type="checkbox"/> Industrial Facilities Contact _____ AIA _____ FAIA _____	<input type="checkbox"/> Recreational Facilities Contact _____ AIA _____ FAIA _____
<input type="checkbox"/> Building Condition Analysis Contact _____ AIA _____ FAIA _____	<input type="checkbox"/> Landscape Design Contact _____ AIA _____ FAIA _____	<input type="checkbox"/> Religious Structures Contact _____ AIA _____ FAIA _____
<input type="checkbox"/> College and University Buildings Contact _____ AIA _____ FAIA _____	<input type="checkbox"/> Libraries Contact _____ AIA _____ FAIA _____	<input type="checkbox"/> Corporate Research & Development Facilities Contact _____ AIA _____ FAIA _____
<input type="checkbox"/> Computer Facilities Contact _____ AIA _____ FAIA _____	<input type="checkbox"/> Manufacturing & Warehousing Contact _____ AIA _____ FAIA _____	<input type="checkbox"/> Residential & Additions Contact _____ AIA _____ FAIA _____
<input type="checkbox"/> Criminal Justice Facilities - Jails Contact _____ AIA _____ FAIA _____	<input type="checkbox"/> Marinas Contact _____ AIA _____ FAIA _____	<input type="checkbox"/> Restaurants Contact _____ AIA _____ FAIA _____
<input type="checkbox"/> Custom Residential Contact _____ AIA _____ FAIA _____	<input type="checkbox"/> Mausoleum Design Contact _____ AIA _____ FAIA _____	<input type="checkbox"/> Retail Interiors Contact _____ AIA _____ FAIA _____
<input type="checkbox"/> Entertainment Facilities and Theatres Contact _____ AIA _____ FAIA _____	<input type="checkbox"/> Medical Research Facilities Contact _____ AIA _____ FAIA _____	<input type="checkbox"/> Schools Contact _____ AIA _____ FAIA _____
<input type="checkbox"/> Facilities Management Contact _____ AIA _____ FAIA _____	<input type="checkbox"/> Multi-Family Housing Contact _____ AIA _____ FAIA _____	<input type="checkbox"/> Shopping Centers Contact _____ AIA _____ FAIA _____
<input type="checkbox"/> General Practice Contact _____ AIA _____ FAIA _____	<input type="checkbox"/> Municipal Facilities Contact _____ AIA _____ FAIA _____	<input type="checkbox"/> Sports Facilities & Arenas Contact _____ AIA _____ FAIA _____
<input type="checkbox"/> Historic Renovation & Preservation Contact _____ AIA _____ FAIA _____	<input type="checkbox"/> Museums Contact _____ AIA _____ FAIA _____	<input type="checkbox"/> Urban Design Contact _____ AIA _____ FAIA _____

Enclosed is check # _____ in the amount of \$ _____ for _____ listings.

Rate cards and accompanying check must be received by April 15, 1991. Please make checks payable to The Michigan Society of Architects.

Rates

Each listing according to building type requires a fee of \$50. There is no limit to the number of building types under which your firm can be listed. If your firm has more than one office, each office will be considered as a separate listing and fee. To be listed, your firm must currently be paying MSA supplemental dues. If you would like to be listed under more than one building type, you need to indicate each additional type on the form below.

Along with each building type selected, please include the name of a contact person in your firm who will be the firm's representative for that typology. The contact person must be an AIA member.

If you have any questions, or for information, contact:

Cathy Mosley
Michigan Society of Architects
553 E. Jefferson
Detroit, MI 48226

(313) 965-4100

Place is the official publication of the Michigan Society of Architects.

DETROIT CHAPTER/AIA IDP COMMITTEE

The IDP Committee sponsored a workshop on site design at Lawrence Technological University January 5, 1991. The workshop was a full day exercise moderated by Alan Cobb, AIA, focusing on the siting and planning of a community college campus with increased attention on the environment, pedestrian, auto circulation and zoning requirements.

Up-coming! The IDP Committee is planning a construction observation workshop for mid-April. Location and date are being finalized. As in the site design workshop, interns will again be able to earn IDP value unit credit for the construction observation workshop. The cost will be \$ 3.00 for Associate AIA members and \$ 5.00 for non-members. For further information and advance registration, please have your interns contact Cary Sheremet, AIA, DC/IDP Chairman, at 871-8500, extension 248.

IPD evening meeting schedule for interns, sponsors & advisors is as follows - All meetings begin at 6:30 p.m.

April 9

Straub Assoc.
1133 E. Maple
Troy, MI
(313) 689-2777

June 11

McCafferty & Assoc.
8445 E. Jefferson
Detroit, MI
(313) 824-5200

August 13

WBDC 2000 Town Center Ste. 1390
Southfield, MI
(313) 358-5080

October 8

Smith, Hinchman & Grylls
150 W. Jefferson Ste. 100
Detroit, MI
(313) 983-3600

December 10

Garbooshian/Budday Assoc.
805 E. Maple Ste. 300
Birmingham, MI
(313) 433-1030

ESHERICK AT BEAUBIEN HOUSE

The Detroit Chapter AIA Women in Architecture Committee and the Huron Valley Chapter, AIA present an informal discussion with:

Gwendolyn Wright Professor, Columbia University Graduate School of Architecture, in the divisions of architecture, planning and preservation. She is also the author of several books.

Joseph Esherick, Principal at Esherick Homsey Dodge Davis & Associates, San Francisco, California, 1989 AIA Gold Medal winner.

Please join us for an evening of wine and cheese with these two eminent professionals.

Place:

Beaubien House
553 East Jefferson
Detroit, MI

Time: 5:30 to 7:30 P.M.

Date: Monday, April 8, 1991

RSVP:

MSA - Mary Lou
(313)965-4100

DC AIA INTERIOR ARCHITECTURE

Goals have been established for a new Detroit Chapter committee on Interior Architecture: Establish a dialogue with fellow professionals and provide support for the Interior Design Action committee; Establish a dialogue with users and clients for Interior Architecture Services; and Establish a dialogue with the general public.

These three goals have been established for the purpose of promoting an awareness of this critical aspect of the profession. A committee of this nature has been inactive for the past several years according to committee chair Tony Foust, AIA. If you are interested in working with Tony on this committee contact him at (313) 262-1519.

OBITUARIES

Past MSA President, **ELMER J. MANSON, AIA, 77**, died on February 9, 1991 after battling cancer. An MSA Convention was not complete without Elmer and Marie Manson, and Elmer attended just about every past president's meeting that I can remember.

A native of New York, he received his bachelor's and master's degrees in architecture from Cornell University. He was a U.S. Army officer during WWII. He moved to Lansing in 1946 to work at the architectural firm of Warren S. Holmes. He started his own firm in 1948 and it later became Manson, Jackson & Kane. His mark has been left on dozens of buildings in Lansing. After his retirement from MJK, he set up his "sunset office" of Manson Architecture where he practiced until his death. During his 54 years he designed many schools, churches, residences and commercial buildings. In 1988, he had a one-man watercolor exhibit at the East Lansing Public Library.

Elmer is survived by his wife, Marie of 54 years and their two children: Joyce Kelleher, an interior designer living and working in Princeton, NJ, and Fred Manson, an architect serving as Division Leader for the Borough of Southwark in London, England. Memorial contributions may be made to: Central Methodist Church Baptist Memorial Screen Fund, Greater Lansing Visiting Nurse Hospice, R.E. Olds Transportation Museum, or Lansing Art Gallery. Elmer was a friend and someone the profession will greatly miss. *Rae Dumke*

WILLIAM E. WISE, AIA, 66, a Detroit Chapter member and formerly of Grosse Pointe Farms, died unexpectedly on October 30, 1990, following a hip replacement operation in Tucson, Arizona.

A graduate of U of M, Mr. Wise practiced architecture in Ohio, Michigan, and Arizona. He was Director of Technical Development and an Associate with William Kessler & Associates, Detroit, for 20 years. Most recently, he was associated with Anderson, De Bartolo and Pan, Architects and Engineers of Tucson, Arizona. This information kindly came to us from Robert Hobson, AIA, a friend of the Wise family.

GRAPEVINE

Robert M. Arens, AIA, assistant prof. of architecture at UD will be teaching in Poland this spring at Politechnika Warszawska. Following the program in Warsaw, he will travel to Italy to resume an ongoing conservation project at the Monastery of Santa Lucia near Siena. Expect to see Bob home sometime in late July...**Edward D. Francis, FAIA**, served as architect on the 1990 G.E. Edison award jury held at "Nela Park" in Cleveland, Ohio. Lighting designer **Gary Steffy** of Ann Arbor was among the jurors...For those of you waiting to hear the **Second Annual Design Conference** dates are September 20 and 21, 1991 at Camp Hayo-Wenta on Torch Lake...For those of you who prefer more luxurious accommodations the **MSA Mid-Summer Conference** will be held at the Grand Hotel on Mackinac Island, August 8, 9 & 10...these dates are later than usual so mark your calendars...An update on **Gene & Jeanie Terrill** of North & South Carolina formerly of Flint and past MSA president. Gene is chairing a Charlotte AIA committee and Jeanie is involved in the Women's Architectural League. They enjoy the Carolina weather and report that the crocus and daffodils were bursting forth at the end of January. But they miss their Michigan friends...**June 15-23, 1993**, during these nine days, approximately 25,000 people will go to Chicago to attend the largest gathering of architects in history, the concurrent meetings of the **National Convention of the AIA, the Triennial Congress and Assembly of the Union Internationale des Architects and the 25th NEOCON**.

FIRM NEWS

Fusco, Shaffer & Pappas, Inc. of Southfield were awarded the "Architectural Award of Excellence" for the "Best Institutional Project of the Year" by the National Commercial Builders Council. The award was for their design of "Classic Residence by Hyatt" located in Teaneck, New Jersey...**HEPY** of Southfield has promoted **John C. Hammer, AIA**, Principal to Vice President. Hammer was formerly Director of Architecture...**Wakely Associates** of Mt. Pleasant, has named **John P. Jensen, AIA**, President and chief executive officer of the firm. He succeeds **Donald J. Wakely, AIA, PE**. The firm also named **Albert A. Goudreau, AIA**, and **Helen K. Miller** as treasurer and secretary, respectively...**Daniel W. Winey, AIA**, has been appointed vice president at **Ford & Earl Associates, Inc.**, of Warren...**Giffels Hoyem Basso, Inc.** has opened an satellite office in downtown Detroit in the Penobscot Building, 645 Griswold, Suite 408, Detroit, MI 48226. Tel: (313) 963-4520; Fax: (313) 963-3874...**Graham Dickens, AIA**, has joined **SH&G Associates** of Detroit as an Associate and Project Manager in the Commerce Division. He was formerly with **Ford & Earl of Warren**...**SSOE, Inc.** of Flint, recently named **Dan Gellings**, a registered architect and **Timothy Wurn**, who hold an A.S. in Architecture from Ferris State College as Associates in the firm. **Jim Saule, AIA**, will head the **SSOE** new Troy office...**Redstone Associates, Inc.**, formerly of Livonia has relocated to Southfield at Manufacturers Southfield Tower, 29201 Telegraph Rd., Suite 400, Southfield, MI 48034-7647. Tel: (313) 351-0770; Fax (313) 351-0660...**Leo G. Shea, FAIA**, Detroit Chapter President is now located at **Kughn Enterprises, Inc.**, 310 Franklin Center, 29100 Northwestern Hwy., Southfield, MI 48034. Tel: (313) 352-4466; Fax: (313) 352-2601...**Tomblinson Harburn Associates** have two locations: 817 E. Kearsley St., Flint, MI 48503. Tel: (313) 767-5600; and 50 W. Big Beaver, Suite 130, Troy, MI 48084. Tel: (313) 528-2560...Architects on the 1991 Board of Directors of **Giffels Associates** are: **Harutun Vaporciyan, FAIA**, Group VP & Treasurer; **James R. Graham, AIA**, Group VP & Assistant

Treasurer; **Loren L. Klevering, AIA**, Group VP & Assistant Secretary; and **Robert J. Lefebvre, AIA**, Vice President...Grand Rapids based **Design Plus, PC**, announced their expansion to include the Kalamazoo office of **Richard Prince, Jr., AIA**, at 309 E. Water Street, Kalamazoo...**Brown Associates Architects, Inc.** of Bloomfield Hills, has appointed **Timothy P. Teehey, AIA**, to Senior VP, and **Douglas J. Atkinson, AIA**, to VP...**Benjamin, Woodhouse, & Guenther**, a division of Ghafari Associates has moved into the Regent Court Building...**Andrew D. Turbett, AIA**, is now affiliated with **Ellis/Naeyaert/Genheimer** of Troy...**Giffels Associates, Inc.** has promoted **Robert A. Grant** to assistant director of architectural development...**SH&G News** - **Stephen J. Kirk, AIA, CVS**, has been appointed Director of Facility Economics...**Thomas Paczkowski, AIA**, Architectural Discipline Head, Commerce Division, has been named an Associate...**Theodore W. Sutherland, AIA**, has been elevated to Senior Vice President and Member of the Board of Directors.

AAA WORKSHOP

The American Arbitration Association, in conjunction with MSA and other industry associations, announced a program "Construction Advocacy Workshop: Preparing and Presenting Your Case in Mediation and Arbitration." This is an intensive one-day workshop geared for construction professionals and attorneys who want to sharpen their advocacy skills in resolving construction industry claims by using alternative dispute resolution (ADR) processes. It will be held in Dearborn, Michigan on June 5, 1991.

The fee is \$150 for AAA members and co-sponsors; \$170 for non-members. To register contact: Dept. of Education & Training, AAA, 140 W. 51st St., NY, NY 10020; tel: 212-484-3233; fax: 212-765-4874.

OPPORTUNITIES

Unisys Design Competition; 5/20 entry deadline; \$10K first prize; 313-451-4468...**AIA Design Honor Awards;** 202-626-7300 for details...**Aga Khan Award,** Program Procedures, 32 chemin des Crets-de-Pregny, CH-1218 Grand Saconnex, Geneva, Switzerland (\$500K in prizes; rolling deadlines)...**Architectural Woodwork Institute Awards Program** (all bldg. types); rolling deadline; 703-671-9100 (Elaine Ball or Elaine Ferri)...**AIAS student competitions:** programs & deadlines vary; 202-626-7472 (AIAS)...**Fullbright Grants** for architects and urban planners; 202-939-5401 or 202-686-7866...**The MacDowell Colony Residency;** 100 High St., Peterborough NH 03058; 603-292-3886 or 212-966-4860 for applications & deadlines...For details on the \$15,000 American Architectural Foundation Richard Morris Hunt Fellowship and numerous AIA-related fellowships and scholarships for minorities/disadvantaged individuals, professional degree candidates, health facilities design, research, and other purposes, call 202-626-7300...**Museums and Historic Buildings in Cold Climates** - a conference on methods of protecting historic buildings and their collections will be held on 23rd - 25th September 1991 at the National Gallery, Helsinki, Finland. For more information contact 061-275-2667 or fax 061-275-2676...AIAS is sponsoring an international design competition. The competition, titled "The Next Age of Discovery", will challenge students and interns to design a U.S. Pavilion for Expo '92 in Seville, Spain. The competition will be open through May 1, and submissions are due May 11. Significant prizes are being offered to the winning designers. For information 202-626-7255...**The 1991 IFRAA (Interfaith Forum on Religion, Art and Architecture) International Architectural Design Awards Program.** Contact IFRAA National Headquarters, Doris Justis, Executive Secretary, 1777 Church St., NW, Washington, D.C. 20036...MAPA, the Michigan Chapter of the American Planning Association, is accepting applications for its 1991 Awards Program. The mission of the Awards Program is "to

recognize and honor outstanding achievements of the past year that have contributed to advances in the planning field in Michigan." Application forms are available from Ms. Barbara Spreitzer-Berent at (313) 556-2698, and Ms. Pat Goodwin at (313) 656-4660. Applications must be received by April 8, 1991.

WANT ADS

- Seeking senior inter-architect position in production, or/and design, and management. Contact Wally Mokayed, 2686 Granada Run, Winter Park, FL 32792.
- Experienced Architect/Project manager seeking responsible, project management position. Contact David R. Schafer, P.O. Box 296, Grosse Ile, MI 48138.
- Registered architect seeking key position with a firm as project administrator. Contact Leon M. Duletsky, AIA, 1993 Beaufait Ave., Grosse Pointe Woods, MI 48236.
- Seeking employment, Registered Architect, 10 years experience. Contact: Behrooz Tasooji, (313) 887-9440, 3145 Middle Rd., Highland, MI 48357.
- Furniture designer seeking work with an architect in the development of custom and built-in furniture. Contact David S. Space A.S.F.D., RR 6 Box 177, Bassett, VA 24055, Ph. (703) 629-3835.
- Karl F. McKinster, AIA, of Laconia, NH, seeks relocation. He is a Graduate of Ball State University and holds degrees in Architecture and Environmental Design. His work experience includes residential, commercial office and retail, municipal, educational, aircraft terminal and storage, interior design, trucking maintenance and repair and ecclesiastical, to name a few. He is also familiar with CAD and has used CAD in all phases of project development. His complete resume is on file at the chapter office.
- Delta College seeking Facilities Planner. Contact Delta College, Human Resources Office, H-120, University Center, MI 48710.
- Looking for work in Detroit area. Masters in Architecture. Resume on file at MSA or contact Sara Snitovsky (305) 861-9346.
- Ferris State University is seeking an experienced individual for a tenure track position to teach in the established two-year Architectural Technology program. Contact Jim Shane, AIA, Construction Department, Ferris State University, Big Rapids, MI 49307, (616) 592-2360.

PROFESSIONAL CONCEPTS INSURANCE AGENCY, INC.

INSURANCE FOR PROFESSIONALS

3001 S. State Street, Suite 400
(313) 662-4041

Ann Arbor, MI 48104
FAX (313) 662-4065

CALENDAR

APRIL

- 5 Brown Bag - Martha Schwartz & James van Sweden- U of M - Art and Architecture Auditorium, 12:30 p.m.
- 7-10 ASFE Semi-Annual Meeting and Loss Prevention Seminar. For more info contact 301-565-2733.
- 8-9 "Infrastructure"-National Symposium-Ramada Renaissance-Techworld, Washington, D.C.800-368-5242, ext. 347 for more info.
- 9 CAUP Lecture Series. Joseph Esherick, Principal, Esherick Homsey Dodge and Davis; The Raoul Wallenberg Lecture; Title TBA; 8:00 p.m., Rackham Amphitheatre; U of M.
- 4/9 to 5/14 CAM education course: Advance Sales Techniques. 6-9 p.m. Southfield. Contact CAM at 313-567-5500 for more info.
- 10-11 Training courses sponsored by the Michigan Concrete Association for Level I and Level II Concrete Technician
- 11 DC/AIA Program, James Franklin, FAIA-Institute Resident Fellow.
- 11 U of M - "An Ecological Approach to Land Use Planning"-Nancy M. Hardesty -7:30 p.m. Room 1046, Dana Building
- 11 CAM Lien Law Workshop: 1:30 - 4:30 p.m. Lansing. Contact ICM at 313-567-5500 for more info.
- 11-12 AIA Professional Development Workshop. Chicago. "Getting & Negotiating Government Contracts" & "Winning Public Design Contracts." Contact AIA at 202-626-7357.
- 16 W.A.L. meeting. Julie Dawson, Painter/Artist Lecturer. Birmingham.
- 17 B.O.C.A. National Building Code Update. 8:00-5:00 p.m. LTU. For more info contact MSA at 313-965-4100.
- 17 Management Information Systems Committee hosts the April Gen. Mtg. on "Protecting the integrity of a firm's computer software and Hardware." 5:00-9:00 p.m. Bavarian Motor Lodge, Frankenmuth
- 18 Michigan Certification Board of Examiners will conduct Level I and Level II Concrete Technician Certification Examinations
- 19 Mid-Michigan Chapter Building Tour
- 19-20 25th Anniversary Alumni Weekend - Class of 1966 - UM Schools & Colleges
- 21 Architects' Sunday tour 1-4 p.m. Michigan National Bank, Farmington Hills

MAY

- 1 Michigan Small Business Day '91. U.S. Small Business Admin., Kellogg Center, East Lansing, MSU 313-226-6075 Ext. 84 for more info.
- 13-17 Preservation Week . Beaubien House Tour, May 15, 1991. 5:30 -7:30 p.m.
- 14 CAM Lien Law Workshop: 1:30-4:30 p.m. Detroit. Contact ICM at 313-567-5500 for more info.
- 16 Ownership & Management Transfer Seminar, 8:00-5:00, University Club, Lansing. Tony Maletta and John Carlsen will teach how to value your firm...buyer's perspective...role of outside appraisers...and much more.
- 17 Mid-Michigan Chapter Luncheon Meeting
- 17-20 AIA National Convention, Washington, DC
- 19-23 ACEC Annual Convention, Baltimore, MD
- 20 Saginaw Valley Chapter Meeting: architecture/Environs; Midland Holiday Inn, Midland.

JUNE

- 5 American Arbitration Association - "Construction Advocacy Workshop"- Dearborn, MI.
- 5-7 1991 National Steel Construction Conference - For more info. contact David G. Wiley, 312-670-5422.
- 21-22 MSA Leadership Retreat/Spring Lake Holiday Inn

AUGUST

- 8-10 MSA Mid-Summer Conference

MSA BULLETIN

Volume 14 Issue 2

Executive Director Rae Dumke
Bus. Manager Cathy Mosley
Editors: Dumke/Mosley
Staff: Evelyn Giordano
Iram Sadia
Mart Lou Roberts

MSA President
Michael Marshburn, AIA

The MSA Bulletin is published by the Michigan Society of Architects and is distributed free of charge to all members. For advertising rates write: Beaubien House, 553 East Jefferson, Detroit, MI 48226; 313-965-4100.

Circulation 2,200.

MICHIGAN SOCIETY OF ARCHITECTS
BEAUBIEN HOUSE
553 E. Jefferson
Detroit, MI 48226

BULK RATE
U.S. POSTAGE
PAID
DETROIT, MI
PERMIT NO. 2048

ADDRESS CORRECTION REQUESTED

TIME VALUE