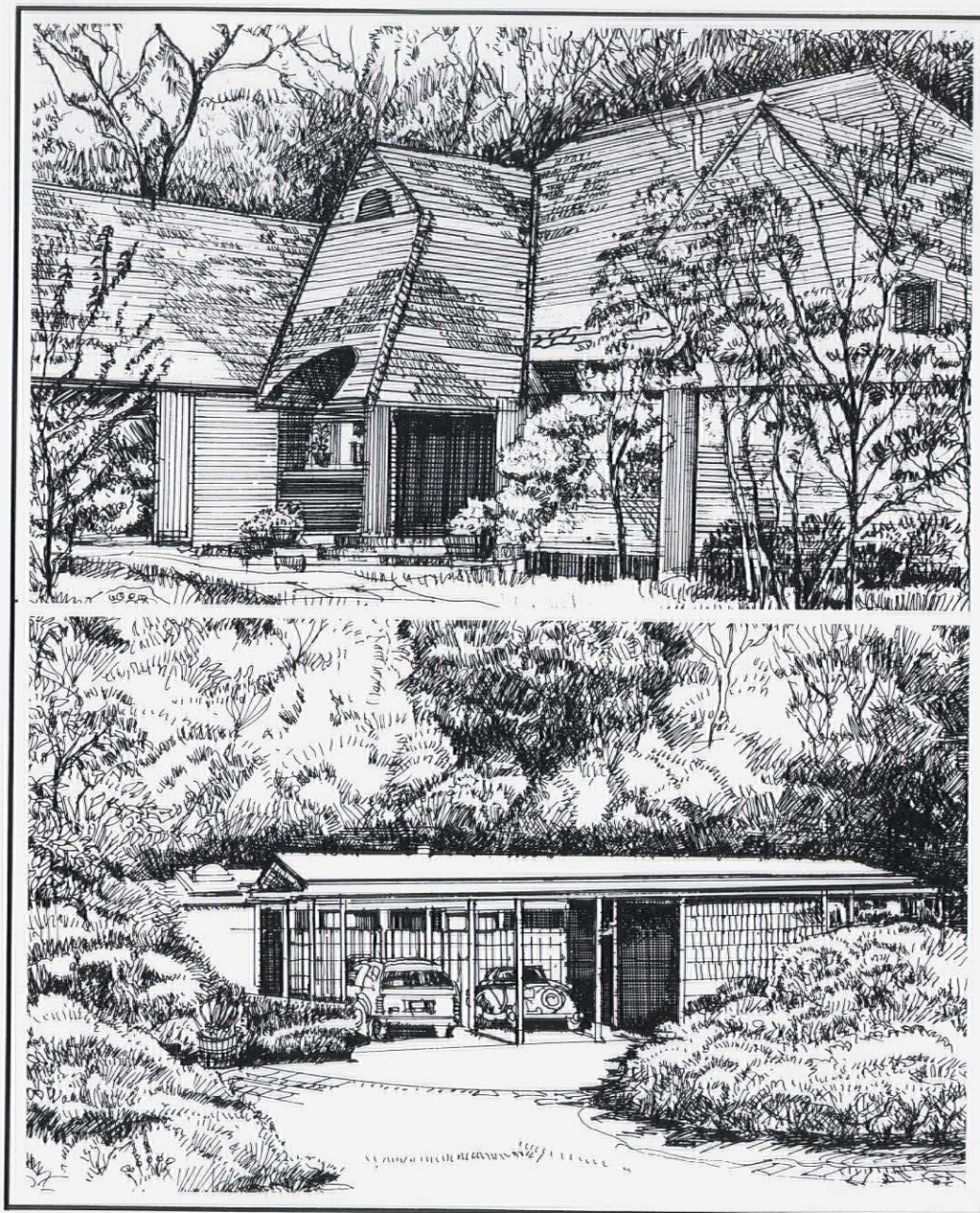


M S A



MONTHLY
BULLETIN

100 YEARS

■ ■ ■ ■ ■ ■ ■ ■ ■
SEPTEMBER 88

Fourth Annual AIA/ASID House Tour

Detroit area architects and interior designers will hold their fourth annual house tour on Sunday, October 2, 1988 from 11 a.m. to 5 p.m. rain or shine. The Detroit Chapter/AIA and the Great Lakes Chapter/ASID have put together a tour called "The Bloomfields." It will highlight homes in Bloomfield Hills, West Bloomfield and Bloomfield Township. This year's tour is more diversified and exciting than ever!

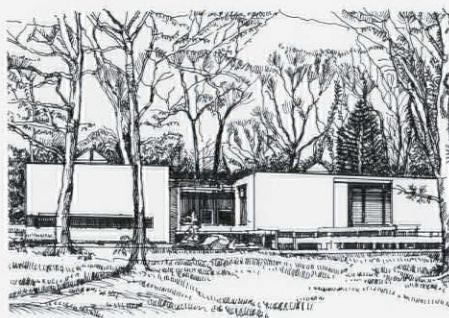
The tour beings at Andover High School located on Long Lake Road west of Telegraph. From there shuttle buses will pass through several elegant suburbs to homes in "The Bloomfields."

Local architects designed three of the homes for their own families. Architect Ralph Youngren, FAIA and interior designer wife Ann Youngren, ASID designed the interiors of their condominium to take advantage of its densely wooded location. Architect Maurice Allen, Jr., FAIA, built his house in 1956 for his wife and their two small children. The Joseph Savin home is made up of three modules and decks that were built over several decades.

The Youngrens chose a condominium, designed by Victor Saroki, AIA and David Sellars, AIA, to match the others in the area. The house features large expanses of glass and a cool gray monochromatic color scheme. These elements link the natural landscaping with the interior. They also provide a background for an extensive collection of furniture and art. A variety of spatial columns produce an architectural setting for art works that the Youngrens have collected for twenty-five years. Several pieces are by noted designers. There is a sofa by Maximo Vignelli and a dining room table by Edmund Fernandez. The Youngren's collaborative design efforts created a thoroughly exciting and dynamic interior.

The Allen house is in a former apple orchard. It is a modest, one-story residence. It continues to be an efficient, pleasant environment for the parents now that the children have grown and moved away. The glass walled entry-living-dining area has views of the trellises in the entrance court, lawn, trees

and pond. The furniture is by Eero Saarinen, Charles Eames, George Nelson and Alvar Aalto. Many of the pieces are part of the permanent collection of the Museum of Modern Art and are 20th Century classics. They have been in constant use in the Allen home since the early 50's. The built-in cabinets, counters and closets are Mr. Allen's design. The house's appearance and color scheme are today consistent with the original design concepts.



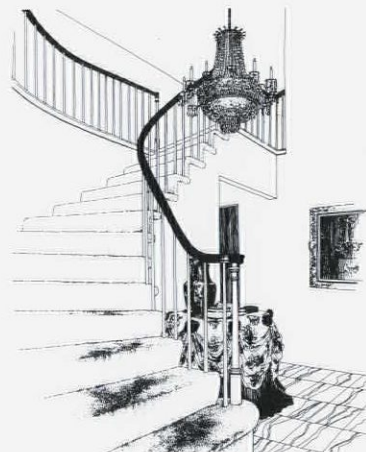
Savin Residence
Designed by Joseph Savin, RA
Rendering by: Charles Blessing, FAIA

The Savin house sits on a heavily wooded site. The center module is raised so that the topography and landscaping are not disturbed. The interior was designed to provide ample and always accessible storage and to eliminate furniture and clutter. The large folding door-walls hide a desk, bar, out of season storage, fireplace wood, television, etc. The house was designed for a family and grew as the family grew and as the budget permitted.



Freedman Residence
Julie Baba, ASID, Designer
Rendering: Richard Leinbach

Designer Julie Baba, ASID, has provided her clients with a clean, contemporary background for their art collection. Off-white upholstery with accents of heather, mauve and turquoise run through the first floor. Recessed lighting highlights the sculpture and glass. Custom-made display cabinets will one day house the expanding art collection. New railings, ceramic tile, bleached wood floors and a marble and mirrored fireplace create a distinct interior. There is also an unusual powder room designed with mirror and neon. The landscaping is a special feature which the visitors will enjoy.



Ohanian Residence
Cynthia Ohanian, ASID Designer
Rendering: Richard Leinbach

Cynthia Ohanian, ASID, chose a romantic, elegant, yet practical interior design for a family of four that entertain frequently. She selected a color scheme of burgundy, rose and off-white walls with dramatic accents of black. Alterations of the original plan accommodate a larger dining room which seats 18 comfortably. The music room is complete with a grand piano and seating areas. The use of moire, satin, lace and chintz fabrics sets the mood. Elegant materials like marble and crystal chandeliers contribute to the feeling of luxury. Hand carved wood pieces from the Baroque, Queen Anne and Louis XV periods fill the spaces beautifully. Oriental accents provide the finishing touches for a

Allied Arts Festival

romantic traditional feeling.

A dynamic view of Fox Lake is the setting for a detached condominium interior designed by Ann Rathbun, ASID. The home, built in 1980, features a contemporary exterior with eclectic interior decor. The living and dining room are a combination of contemporary and Oriental furnishings. The neutral backgrounds highlight the large Lisa Milroy painting, "Fans" which will be going on a national tour in October.

Teal blue and peach accent the neutral backgrounds throughout the house. Traditional English and Country French furnishing include leather



Chernoff Residence
Ann Rathbun, ASID, Designer
Rendering: Richard Leinbach

seating, panelled walls, and built-in bookshelves. A cozy lower level family room has white panelling with Laura Ashley fabrics and wallpaper. This functional area for the family includes a large-screen television, office area, piano and game table. The master bed-



Clancy Residence
Casey Warner Pierson, ASID, Designer
Rendering: Richard Leinbach

room has a custom stained glass panel and a stunning four poster bed accented with yards of white eyelet bedding. The house lends itself to different moods, yet each room creates its own majesty, warmth, and comfort.

Designer Casey Warner Pierson, ASID, had to accommodate a young growing family whose diverse interests and schedules required careful planning. The plan allows for group functions. The lower level family room includes game machines, sauna, hot tub, changing room, bath, bar and screened porch. Bedroom areas are private yet capture the view of the wooded site and inground pool. Colors flow through the house. Blue, the clients' favorite, is both a primary and accent color. The kitchen has a wonderful garden quality with floral and vine wall covering and custom braided Stark area rugs. Other features of the home include a beautiful fireplace and formal bar. The designer molded an atmosphere of warmth and beauty around the practical aspects of family life.

Tickets for the AIA/ASID house tour are \$12 (no children under 12 please). Contact the DC/AIA at 965-4104 for advance purchase information. Hudson's Northland, Eastland and Westland Home Stores; Jacobson's Store for the Home (Birmingham); Pierson Interiors and Walter Herz Interiors have tickets. They will also be available the day of the tour at Andover High School.

The Allied Arts Committee is proud to present the films of Charles and Ray Eames. John Berry, Director of Corporate Communications, at Herman Miller and Harold Skramstad, President of Henry Ford Museum and Greenfield Village will introduce the films.

Charles and Ray Eames are perhaps best known for their furniture designs. The Eames lounge chair and ottoman, on permanent display in the Museum of Modern Art; the Time-Life lobby chair, and Eames tandem seating, widely used in major airports, terminals and lobbies around the world are all still produced by Herman Miller.

Charles and Ray met at the Cranbrook Academy of Art in 1936 during a fellowship offered to Charles by the noted Detroit architect and designer of Cranbrook, Eliel Saarinen. After marrying in 1941, they moved to California where they developed prosthetic devices, molded splints and other medical aids for the Navy's war wounded. They began producing molded chairs in their workshop and six years later, Herman Miller hired them to produce and market their furniture.

In the next three decades, they developed many designs for Herman Miller while also expanding their own artistic ventures into photography and film.

It is a sampling of these films that will be presented at the Allied Arts Festival. The short films are beautiful, stimulating and mind expanding. They received rave reviews during their recent screening at the Cooper Union in New York City.

Registration, hors d'oeuvres and refreshments are from 6-7:30 p.m. The presentation is from 7:30-9 p.m. Tickets are \$20.00/person. Call the Beaubien House for reservations.

Drafting Contest Revived

Arm bands and green eye shades are gone from the drafting room but the quest for excellence is still there. A tradition that goes back to the Second Annual MSA Convention is being revived for the 73rd Annual Convention. After a hiatus of six years, the MSA/SMACNA Drafting Competition will once again be featured. The contest is intended to stimulate greater interest and pride in the techniques of architectural and engineering drafting.

SMACNA - Detroit Chapter's Industry Promotion Fund was developed as a public relations tool for the sheet metal industry. The industry is committed to promoting excellence in drafting and believes that this will benefit the entire building industry. The competition is sponsored by MAC, Mechanical Airhandling Contractors division of SMACNA.

Goodwill is not the only prize. Contestants will vie for \$3,600 in cash and a plaque. There will be six first, second and third place awards in the following categories: architectural (A), structural (S), mechanical (M), mechanical air handling (MA), electrical (E) and computer generated drawings (C).

All unregistered architects, engineers and drafting personnel who are employed in this state are eligible. Each competitor must be endorsed by a principal of the firm and shall submit two white prints of any single working drawing of a tracing which was at least 80% drawn by the entrant in the period January 1, 1987 to September 1, 1988. Only one entry per contestant will be accepted and it must be a reproduction of an original drawing and not a drawing reproduced for the contest.

All entries must be received by 5 p.m., Thursday, September 1, 1988 at SMACNA, 3221 West Big Beaver Road, Suite 305, Troy 48084. Direct your questions to Sharon Havlick at 313-649-5450.

Workshops Worth Watching

The University of Wisconsin has three workshops coming up in the fall of particular interest to area architects:

Asbestos Project Planning and Design, October 31-November 3, 1988; cost \$700. The Asbestos Hazard Emergency Response Act of 1986 requires that all professionals who design and manage asbestos abatement projects must receive proper training. This workshop is specifically designed to meet the accreditation requirements of the act. All participants who successfully complete the workshops and exam will receive full accreditation.

The 28th Annual Construction Contracts & Specifications Institute will be held on November 2-8, cost \$395. Liability, asbestos, quality control over specs and working drawings and A201 Documents will be discussed.

Preventing Building Design and Construction Failures will run November 16-18; cost \$395. The workshop will help architects to recognize, avoid and solve building design and construction problems.

Celebrate !

Pick up that pencil and open your calendar to these dates: October 19, 20 & 21. Now that you see that these dates (or most of them) are still open, please pencil in **MSA CONVENTION**.

This year's fall convention will be "A celebration of Architecture In the Public Sector." The program committee has been busy lining up a terrific group of speakers (Brendan Gill, Edward Francis, FAIA; Richard Frank, FAIA; Gunnar Birkerts, FAIA; William Kessler, FAIA; C.C. Pei, AIA and John David Mooney to name just a few) who will focus our attention on Public Architecture.

There will be exciting events throughout the three day convention to allow all attendees the chance to mingle and get to know each other in a social atmosphere. For those of you who have an insatiable desire for competition, we have provided an opportunity for you to experience the thrill of the Grand Prix.

Convention registration forms and a complete program of speakers and events are in the mail and included in the newsletter. So mark your calendars, limber up your racing skills and prime your minds for a fantastic three day celebration of architecture in our state's capital city - Lansing.

Code Seminar

The Saginaw Valley Chapter/AIA will host its second annual code seminar on September 19, 1988. The seminar will feature a four hour presentation by Williams Wall, P.E., Regional Engineer for the International Council of Building Officials. He will be speaking on the Uniform Building Code that affects atriums and covered malls.

Registration will be held from 12:30 p.m. to 1:00 p.m. The presentation will run from 1 to 5:15 p.m. The registration fee includes dinner. The cash bar will be open until 6:15 p.m.

The purpose of the social portion of the program is to encourage interaction between code officials and architects. This was well received last year.

Architects, code officials and fire departments from throughout Michigan are invited. Mailers will be sent out shortly.

The seminar will be held at the Saginaw Holiday Inn located at I-75 and M-46. The cost is \$20 for AIA members and \$35 for non-members. Tim Krug of Wigen, Tincknell, Meyer & Associates, Inc. can be contacted for additional information.

Architecture for the Birds

The University of Michigan College of Architecture and Urban Planning will conduct a bird house design/build competition and sale as part of the Alumni Reunion Weekend that is scheduled for September 16-17, 1988.

All U of M alumni, faculty and students are invited to submit entries. Proceeds from the sale will support activities of the architecture alumni society.

The entry fee is \$10 and the bird-houses may be turned in at the College on Friday, September 16 between 12 noon and 4 p.m. and on Saturday between 8:30 a.m. and 9:15 a.m.

Entries will be on display for review and purchase at a tailgate party in the art and architecture building sculpture garden on Saturday, September 17 from 12:30 p.m. to 2 p.m.

For further details, call Dick Croak or Mary Ann Drew at 313-764-1315.

WAL Announces Scholarships

The Women's Architectural League Scholarship Committee; Mary Urban, Jan Guenther and Barbara Roehling, have decided on two candidates for 1988 scholarships. Each will receive \$450 to apply to their fall term. Raymond Paul Hearn, a landscape architect student from Michigan State and Craig Spiegel from Lawrence Institute of Technology were the recipients.

The winners were selected from a list of 65 candidates who had submitted credentials.

WAL will once again be selling Spree and Entertainment books to raise

money for scholarships next year. A portion of the cost is tax deductible. Call Maxine Stempien, 646-4360 for details.

WAL officers for 1988-89 are:

President:

Maxine Stempien

Vice President:

Myrna Liepins

Secretary:

Janice Mayotte

Treasurer:

Aileen Pfaendtner

Corresponding Secretary

Marianne Albert

cause

and

EFFECT

Cause and Effect: the IDP Seminar Series is sponsored by the Detroit Chapter AIA as an extension of the DC/ALA IDP Committee.

The IDP is a professionwide internship program to help CAUSE greater interaction between intern-architects and their employers with the EFFECT to the intern of greater preparedness for the A.R.E. exam and architectural practice, and to the employer of a more valuable and useful employee. IDP is an advisory network, continuing education service and a record-keeping format.

This seminar series offers an opportunity for supplementary education with additional Value Unit credit for interns (third year college students through registration candidates) in subjects you may not be exposed to at school or work. Each seminar will be taught by a practitioner experienced in that topic. Names of speakers will be announced in the DC/ALA IDP Newsletter.

All programs are from 6:30 PM to 9:30 PM. Registration fees are \$5.00 per seminar for Associate AIA and ALA members and \$7.50 for nonmembers, or \$15.00 members for the series and \$22.50 for non-members. Preregistration is urged but on-site registrations will be taken. Mail check to the:

*Detroit Chapter AIA
553 East Jefferson
Avenue
Detroit, Michigan 48226*

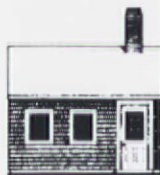
*Include your name,
daytime phone number
and seminar titles for
which you are registering.*

The Architect's Office
14 September 1988
IDP Training Area 13A
Office business structure;
financial, project and office
management.

The Architect's Public Image
12 October 1988
IDP Training Area 13B
Marketing research, techniques,
planning communications
and more.

Architects And The Law
16 November 1988
IDP Training Area 13C
Ethical, legal and liability
issues and contracts

*Design: Robert Arens, ALA
Printing: Print Plus*



Exhibitor's View



By Fred Blackwood

It was a dark and stormy night. A labyrinth created by large trucks separated us from our destination. The temporary back alleys formed by the trucks had become long gang showers, the rainwater collected by the truck roofs was flowing to its only relief... between the trucks, and onto us.

This whole "shedding-the-water-off-the-back" Beaver thing was becoming just a bit to literal. We made eighteen trips bringing our custom-built furniture-grade display modules onto the MSA Convention floor. I remember the MSA staff pushing the right buttons to get us a couple of dozen towels to dry off our new wet furniture, in time to keep it from developing a wrinkle finish.

Another year, the exhibit area was "not yet integrated with the HVAC system" and thereby "unventilatable." As temperatures reached over 100°, our beautiful (last for forever) ceramic tiles were absorbing the heat and melting away the normally dependable Velcro fasteners. We had to keep the architects a safe distance from the booth, for it was raining tile. For one brief, half-moment, I contemplated a career in soft flooring goods; regaining my senses I realized that there must be some important lessons to be learned from these early convention struggles.

Indeed there were.

First, Beaver is in the ceramic tile business, not the exhibit design business. Also, we are at the convention to support the MSA, not exhibit display designers, or the drayage people that derive some sort of sick pleasure from abusing the display that we spend uncountable hours and very countable dollars creating.

Most importantly, the MSA membership does not need sales reps with

fancy displays slapping them on the back and buying them drinks. What they require are professionals that bring the same level of commitment to

Convention '88

This one's different - there's no debating;

It's Architecture we'll be "celebrating!"

"MSA Convention Time" approaches soon;

19, 20, 21 of the **October** moon.

So mark your calendars for **Lansing** town

and make plans to "Come on Down!"

Committees have worked with deep concentration

to provide a program of great information.

In addition, when plans are done, we'll all have lots of **FUN!**

A sample of the lineup will soon reveal a program with outstanding appeal:

There's "Architecture in '88" by **Brendan Gill**.

A look at the Capitol is on the bill by **Francis, Frank, Kandler and Birkerts**.

(Now there's a group of knowledgeable experts.)

The Paris projects of **Ott and Pei** are certain to highlight everyone's day. There's **Carla Lind** on Frank Lloyd Wright

and **John David Mooney** on the effects of Light.

There's **Kessler, Groat, Mayer and Canty**;

there's seminars, panels and speakers aplenty.

And that's not all. Oh yes, there's more! We've got a lot of "fun" things in store. The **Host Chapter Party** on Wednesday night

is in the Rotunda - a special site.

Thursday is "**Exhibitors Day**," with products and materials on display.

And Thursday evening's big **Grand Prix**

is one event you'll just have to see.

So, "Rev Your Engines!" And then join in.

I say to all, "Let The Games Begin!"

Friday evening will wind up the show, with the **Awards Dinner** and **Afterglow**.

You're gonna get flyers, forms, graphics and stuff, with details and specifics more than enough.

So, **plan to be there**; you won't regret it. **I guarantee you'll not soon forget it!**

(by: Anonymous Thank Goodness)

"Celebration of Architecture in the Public Sector"

Michigan Society

of Architects

Annual Convention

Oct. 19,20,21,1988

**Lansing Convention
Center**

Lansing, Michigan



1988 MSA CONVENTION PROGRAM

A Celebration of Architecture In The Public Sector

WEDNESDAY, October 19, 1988

Witness the Architects' Licensing Board in action.

8:30-12 noon Lansing Center

MSA Board of Directors Meeting

10:00-12 noon Lansing Center

SMACNA/MSA Luncheon will recognize the winners of the 1988 Drafting Competition

12 noon-2 p.m. Radisson Hotel

Brendan Gill, architecture critic for the *New Yorker Magazine* and author of the recently published biography of Frank Lloyd Wright, *Many Masks*, will provide an **Overview of the State of Architecture in 1988**. His ascorbic wit is not to be missed.

2:00-3:00 p.m. Lansing Center: City I & II

Elijah Myers' grand old Michigan Capitol will be the centerpiece of the convention. William Kandler, Executive Assistant to Governor Blanchard and President of the Friends of the Capitol will relate the history of the building and describe the Friends' efforts that led to the recent res-

toration of several areas of the building. Edward Francis, FAIA, past president of the Friends and member of the selection committee that picked the current restoration/expansion team. Richard Frank, FAIA, is a pioneer restoration architect. He headed the Master Plan Team and is now implementing the preservation portion of the plan. Gunnar Birkerts, FAIA, will present his daring underground concept for expanding the capitol that could be carried out without sacrificing its historic integrity. A panel discussion of the **History, Restoration & Expansion of the State Capitol, Lansing, Michigan** will set the stage.

3:00-4:30 p.m. Lansing Center: City I & II

Presentation of Architects' Registration Certificates

5:00-6:00 p.m.

Experience the grandeur of Elijah Myers' soaring rotunda space in the Michigan State Capitol. Listen to a jazz band and stroll the corridors of power while enjoying an hors d'oeuvres buffet and refreshments, jointly sponsored by the Friends of the Capitol, MSA and the Mid-Michigan Chapter/AIA. **Opening Reception.**

6:30-9:00 p.m. Michigan Capitol

THURSDAY, October 20, 1988

Dow Alumni Breakfast:

7:30 a.m. To be determined

One of the most talked about preservation projects in Michigan. It was one of Frank Lloyd Wright's long ignored marvels until Steel Case sponsored a first class restoration of the 1908 gem. Carla Lind, who pulled it all together as consulting project director for Steelcase, will tell her secrets. **Restoration of the Meyer May House.**

9:00-10:00 a.m. Lansing Center: City I

You hear it. You say it. "What is wrong with architecture education today?" For the first time in a long time all of the deans of all of the accredited schools in Michigan will be together on a panel at the MSA Convention. Linda Groat from U of M will moderate. The deans: Robert Beckley,

FAIA; Neville Clouten, Karl Greimel, FAIA and Bruno Leon will share the spotlight with Daniel Hoffman, Cranbrook Academy of Art Artist-In-Residence for Architecture. **An Issue of Architectural Pedagogy: Training or Education?**

10-11:45 a.m. Lansing Center: City II

The latest architectural products and services will be on display. Have lunch on the exhibit floor. Get to know the people who have the most up-to-the-minute technical information about the building products you specify. Watch the Grand Prix Time Trials and root for your favorite team. **The Exhibits Open.**

11:30 a.m.-2:00 p.m. Lansing Center

Case Study. It may be the most significant new public building constructed by the state since the Capitol was completed in 1878. Will the people love it or hate it? William Kessler, FAIA of William Kessler and Associates will explain why **The Michigan Library Museum Archives Building** is as it is.

2:00-3:00 p.m. Lansing Center: City I

Case Study. John David Mooney, internationally acclaimed environmental artist, will describe how he created his huge shimmering sculpture titled *Prehude in Light*. **Art In Public Spaces: Festival of Perth.**

3:00-4:00 p.m. Lansing Center: City II

Case Study. Carlos Ott, MRAIC, was thrust into architect's heaven in 1983 when, at age 37, he won an international competition to design the \$500 million Opera de la Bastille

in Paris. He was born in Uruguay and educated there and at Washington University in St. Louis, Missouri. He spent two years in Georgia and then moved to Toronto where he worked on the renovation and expansion of the Royal Ontario Museum. A competent beginning to an architectural career but not necessarily a precursor of stardom. Learn how it happened when he presents **The Design of the New Paris Opera House.**

4:00-5:00 p.m. Lansing Center Room: City I

At last, the Architects Grand Prix! For months (after hours), architects' offices all over the state have resembled the GM Tech Center as the cars for the Grand Prix were designed and constructed. Start your engines. The Prix finals are on. **Exhibitors Buffet & Reception.**

5:00-8:00 p.m. Lansing Center

FRIDAY, October 21, 1988

Donald Canty, Hon. AIA and Editor In Chief of *Architecture Magazine* can't put you on the Cover of *Rolling Stone* but he will offer some inside tips on how to get your building into print. **How to Get Published: Confessions of a Magazine Editor.**

9:00-10:00 a.m. Lansing Center: City I

MSA Business Meeting

10:00 a.m. Lansing Center: City II

Exhibitor's Luncheon

12 noon-2:00 p.m. Lansing Center

What's a public building without art? Many local jurisdictions encourage it. The Federal government, state of Michigan and some counties, require that a percentage of the cost of construction be set aside for the purchase of works of art. Irene Walt, Honorary Member, Detroit Chapter/AIA, is one of the most successful procurers of art in the state. She raised \$500,000 in private donations for the Detroit General Hospital and headed the movement to place art in the new Detroit People Mover stations. She will share her enthusiasms and methods and provide an insiders' look at **Public Art for the Detroit People Mover.**

2:00-2:45 p.m. Lansing Center: City I

Panel: Larry Bennett, P.E., Acting Director of the State Office of Facilities and Edward Markwart, AIA, Director of Design Division will share the podium with Gaetano Russo,

Vice President for Facilities and Management from Wayne State and Fred Mayer, University of Michigan Planner. Noel Fagerlund, AIA, president of SH&G will referee. Find out **How Large Public Institutions Select Their Architects.**

2:45-4:00 p.m. Lansing Center

Case Study. Over time, some public buildings achieve shrine status. How does an architect alter such buildings and avoid the guillotine? Chien C. Pei, AIA of I. M. Pei and Partners of New York will present his firm's **Addition To the Louvre, Paris.**

4:00-5:00 p.m. Lansing Center: City II

Fellows' Reception

5:30-6:30 p.m. Radisson Hotel Suite

President's Reception

7:00 p.m. University Club

Don M. Hisaka, FAIA of Cambridge, Massachusetts chaired the jury and he will present seven MSA plaques to the winners. The Gold Medal, Hastings Award and three Honorary Memberships will also be presented. **Black Tie Honor Awards**

8:00 p.m. University Club

EXHIBITORS

Acme Window & Door
windows, entry & patio doors

Advance Business Systems, Inc.
Auto CAD and Timberline

American Glass and Metals Corp.
Wausau Metals Products Line

Andersen Windows
Perma-Shield windows & patio doors

ANR Pipeline Company
natural gas equipment applications

Arch Tech Computer Software
computer design program

Arkitektura/IN SITU
furniture, lighting, textiles

Victor S. Barnes Co.
Dupont Corian Formica products

Beaver Distributors
ceramic tiles

Bishop Distributing
tile, wood, carpet floorings

Borin/Boice Building Supply
building supplies

Casper Systems Corporation
shelving; filing systems mail room equipment

Cold Spring Granite Company
granite

Commercial Blueprint, Inc.
drafting & engineering supplies

Con/Steel Design Systems
concrete systems for buildings

Consumers Power Company
gas A/C equipment

Contract Interiors
office interiors

Crites, Tidey & Associates Inc.
commercial lighting

Decra-Loc-USA, Inc.
concrete pavers & retaining walls

Designers Workshop/DW2, Inc.
restaurant designs

Detroit Edison Co.
outdoor lighting & space conditioning

Devtron Russell, Inc.
Auto CAD AEC, Architectural

Dow Chemical Co.
Styrofoam Brand Products

Dr. Software, Inc.
ARRIS, CAD software package

Eisen/Roberts/Andridge, Inc.
LCN Closers-Von Duprin Exit Devices

Entre Computers Center
Auto CAD systems

Fabcon Incorporated
precast concrete panels

Farnell Equipment Co.
lab & hospital casework

Hardware Agents
Am Specialties, Inc.
Monarch Hardware Mfg. Co., Inc.
Rixson — Firemark Architectural Hardware

Fascia's Inc.
wall systems

Federal Lawn Sprinkler Supply
fountains/irrigation supplies

Fendt Builders Supply
interlocking paving brick

4-D, Inc.
masonry units

Garland Company
roofing system

Genessee Ceramic Tile Dist., Inc.
ceramic tile

Gerlinger Equipment Company
floor coverings

Grand Blanc Cement Products, Inc.
concrete products

Great Lakes Sales, Inc.
American Olean, US Ceramic, Kentile tiles

Guardian Alarm Company
card, voice access; security equipment

Holmes Associates, Inc.
Carlisle rubber roofing; Dow Corning, Mameco sealants

Horne Building Specialties
Pella windows

Hydrozo Marketing, Inc.
Hydrozo coatings

Intergraph Corp.
CAD/CAM

K & M Machine-Fabricating
fabricating/large metal sculpture

Kawneer Company
architectural aluminum products

Lincoln Tile & Supply
ceramic tile

Lincoln Brick & Supply
brick, glazed tile, waterproofing

Marne Industries
insulated building systems

Marvin Windows
windows and patio doors

Masonry Institute of Michigan, Inc.
masonry product literature

Metal Building Specialties
Wausau metals

W. B. McGuire Co., Inc.
mechanical/hydraulic dock levelers

Michigan Consolidated Gas Co.
natural gas exhibit

MidContinent Cabinetry
wood kitchen cabinets

Mosley Enterprises
Gypson concrete floor underlayment

Norco Windows of Michigan
patio & swing doors

Oshtemo Hill, Inc.
metal doors, frames, hardware

Pozzi Wood Windows
wood & alum. windows & doors

Otis Elevator
elevators

Overhead Door Co.
commercial rolling steel doors

Pioneer Architectural Signage Systems
architectural sign systems

Product Resource Company
Architectural Sheet Metal

Professional Concepts Insurance Agency, Inc.
liability literature

Professional Underwriters, Inc.
liability literature

Reliable Architectural Products
Westinghouse Micarta laminate

Riverrock Surfacing Co.
stone decking

Seal-Dry/USA, Inc.
Seal-Dry systems

SMACNA/Metro Detroit Chapter
manuals

Special-Lite, Inc.
aluminum doors

Sun Awning
awnings

Superior Carpet Supplies, Inc.
Mercer plastics; mono bond system

Terra SYSTEM ONE
Division of Wausau Tile, Inc.
plaza decks and components

Thoro System Products
waterproofing products

Unilock Michigan, Inc.
interlocking pavers & retaining walls

U.S. Brick, Michigan Division
brick products & face brick

United Glazed Products
glazed block/"Spectra Glaze"

Valley City Sign Co./VCS Sign Network
architectural & commercial signs

Vande Hey's Roofing Tile Co., Inc.
architectural roof tile

Virginia Tile Co.
ceramics, Armstar Seneca tile

Wasco Products, Inc.
architectural skylights

Weyerhaeuser Company
engineered forest products

Williams Products
architectural seals/gaskets

Wilsonart
Tambours Metallics, Croftwood Solicor
Chemsurf

Wojan Window & Door Corp.
windows and doors

U.S.G. Interiors
ceilings & movable walls

73RD ANNUAL MSA CONVENTION

Lansing Center, Lansing

October 19-21, 1988

CONVENTION COMMITTEE

Noel Fagerlund, AIA Chair
Thomas Lucas, FAIA MSA President

Russell Hinkle, AIA MidMichigan Chapter

Frederick Dawe, AIA MSA Board Liaison

EXHIBITS

Michael Mosley, AIA, Chair

Bonlap Chan, AIA

Steve Farkas, AIA

James Graham, AIA

James Hackenberger, AIA

Thomas Young

GRAND PRIX

Erick Hiedemann, AIA Chair

Wayne Bills, AIA

Jim Braathen

George Ontho, RA

Jim Perkins, Assoc.

PROGRAM

Ralph Youngren, FAIA, Chair

William Kessler, FAIA

James Meneghini, AIA

PUBLIC RELATIONS &

GRAPHICS

David French, Assoc., Chair

Janet Baetz, Frank Moran Assoc.

Debra Lewis

OPENING RECEPTION

Richard Fry, AIA, Chair

Evie Asken, FAIA

Ric Anselmo, AIA

DESIGN AWARDS

Harold Van Dine, FAIA

RECOGNITIONS

Norman Hamann, AIA

STAFF

Rae Dumke, Exec. Dir.

Cathy Brooks

Lynne Merrill-Francis

Evey Giordano

Barbara Willett

Marylou Williams

3 Day Package	Fee	Total
Advance Registration	100	_____
Register at Convention	125	_____
Spouse Registration	25	_____
Student	5	_____
Exhibits Only	No Charge	_____

Note: Three-Day Package Registration fee includes all seminars, the Exhibitor's Grand Prix Party, and lunch on the exhibit floor on Thursday and Friday.

Spouses registration fee includes all seminars, exhibits and the Exhibitor's Grand Prix Party on Thursday evening.

Student registration fee covers the seminars and exhibits. Meals are not included.

Design Professional include members and employees of the following: AIA, ASID, IBD, PSMA, ASLA, MSPE, CEC, CSI, MSRLS, MSPO, AGC, SMPS and all employees of A/E firms

The exhibits will be open Thursday and Friday. There is no charge to visit the exhibit floor but you must be registered.

One Day Registration

Wednesday-Advance	\$25
At the door	\$35
Thursday-Advance	\$50
At the door	\$60
Friday-Advance	\$50
At the door	\$60
MSA Business Meeting	No Charge
Dow Alumni Breakfast	No Charge

The following events are not included in the registration fee, tickets are required:

Host Chapter Party	\$30
President's Reception	
and Design Awards	\$50
SMACNA/MSA Lunch	\$15
	Total \$

Note: Tickets will be at the Reg. Desk at Lansing Center.

Name _____

Spouse Name (if attending) _____

Firm Name _____

Address _____

City _____ State _____ Zip _____

Telephone _____ Chapter _____

Check # _____ in the amount of _____

VISA () MASTERCARD () Exp. Date _____ Acct. No. _____

Signature _____

Please check: AIA Member () Prof. Affil. ()
Associate () WAL Member ()
Exhibitor () Student ()
Other () _____

MAIL THIS FORM & PAYMENT TO;

"MSA Convention '88," 553 East Jefferson Avenue,
Detroit, MI 48226.

NO CANCELLATIONS OR REFUNDS AFTER TUESDAY, OCTOBER 10, 1988

For hotel accommodations, please contact the Radisson Hotel Lansing",
111 N. Grand Avenue, Lansing, MI 48933(517) 482-0188

START YOUR ENGINES! The nine MSA Chapters, architectural firms and architects from around the state will test their driving skills during the MSA Grand Prix. This exciting event will be held on Thursday, October 20. The course will be set up on the Exhibit Floor of Lansing Center surrounded by the splendid array of Vendor Exhibits.

To participate in this friendly rivalry, you need only fill out the form below. For a mere \$100, we will ship you a car body to customize with the graphics of your choice. All of the car bodies will be displayed during the Host Chapter Party in the Rotunda of the Capitol Building on Wednesday evening, October 19.

Qualifying rounds begin Thursday at noon with the **Chapter Challenge**, followed by **Open/Match Racing**. Evening qualifying begins at 5:30 with the **Office Clash** and still more **Open/Match Racing**.

Head-to-head racing in 5 or 6 car heats through quarter-final and semi-final rounds will determine entrants in the grand finale: the **MSA Grand Prix**. This 10-car race, which will begin at 7:30 pm, will determine the overall winners. Prizes will be awarded for the top three finishers.

To assure that the only variable in this contest is driving skill, MSA will provide 10 equally-primed, finely-tuned racing chassis. Your customized car body will be matched to a chassis for your scheduled racing heat.

The 120-foot course of jumps, turns and obstacles will provide a real challenge to the driver and entertainment for the spectators. 6" x 21" billboards lining the course will be provided for all Exhibitors and Grand Prix entrants.

Don't miss this thrilling competition. Return the completed form today!



Car Body Order Form

YES! We want to participate in the **MSA Grand Prix!**

Please send us ____ car body(ies) for \$100 each. Amount enclosed \$ _____

Please return to:

MSA Grand Prix
Beaubien House
553 East Jefferson
Detroit, MI 48226

Company Name _____

Address _____

Contact Person _____

Telephone No. _____

Firm News

Clifford N. Wright Associates Architects of Birmingham has added Gregory J. Varano to the architectural staff and Deborah J. Dawe as Office Manager. Greg has five years architectural experience and was formerly employed by Coquillard & Associates and Harley Ellington Pierce Yee Associates. He is a 1984 Honors graduate of LIT. Deborah has 11 years legal background with management and word

processing experience.

Steele Engineering Associates, Inc. (SEAI) was formed by Ralph P. Steele, P.E., to provide mechanical & electrical engineering services to institutional, commercial, governmental and industrial clients. The address is 24573 West Ten Mile Road #6, Southfield, MI 48034, phone 313-358-0582.

Progressive Architects/Engineers/Planners, Inc., is pleased to announce the appointment of Gary Bottomley to the Field Services Department. Bottomley received his Master of Architecture degree from the University of Michigan in 1973.

Brown & Deyo and Associates Architects, Inc. announced that Samuel M. Deyo, Vice President for 14 years stepped down June 30, 1988. He will continue to serve the firm as Consultant and Specification Writer. Charles E. Johnson will assume the role of Vice President. Timothy P. Teefey and Jens Kusk have been made associates.

Dow-Howell-Gilmore-Associates, Inc. announced that Matthew E. Dalzell of Midland has been selected to receive the first annual Alden Dow Memorial Architectural Scholarship which has been established at the Midland Foundation. This \$1000 award will be used this fall when Dalzell enters the Masters degree program at Michigan's School of Architecture and Urban Planning. The scholarship may be renewed for his second year.

Barton-Malow Company, has announced that Joseph R. McGrath, P.E. has joined the Company as Senior Project Administrator, Health Facilities Group.

Giffels/Hoyem Associates, Inc., names two new associates: Lawrence C. Hamilton, Assoc. Member and Kirk H. Delzer, AIA. Both are project administrators. Hamilton joined the firm in 1985 and Delzer in 1986. Project administrators are responsible for overseeing the engineering, architectural, and technical services for commercial, institutional, and industrial building development.

Albert Kahn Associates, Inc., Architects and Engineers has pro-

moted Stephen Q. Whitney, AIA to Chief of Architectural Development. Whitney, a graduate of the University of Minnesota, joined AKA in 1979. In 1986 he was elected to the firm's Board of Directors, and, in 1987, was named a vice president.

John Enkemann, AIA was advanced to Assistant Chief of Architectural Development, the position held by Whitney. He is a graduate of the Lawrence Institute of Technology and a member of the firm since 1978.

Stewart Kissinger, AIA was appointed to the position of technical advisor. He earned his B. Arch. Degree from the University of Michigan. He joined AKA in 1987.

The Firm advanced 10 other people to the status of senior associate. Twelve other key employees have been named associate. The new senior associates are Vitas Bagdonas, Pamela Y. DuBois, AIA; Tonly L. Grego, AIA; Larry T. Raymond, AIA; Robert F. Sharrow and Richard B. Whedon, all registered architects; and Gary W. Collins, Paul A. Maxwell, David G. Reeve, and John J. Schuster, all registered engineers.

Louis G. Redstone Associates, Inc. is pleased that Maureen L. Lawlis of Michael J. Dul & Associates, Inc. is one of sixteen Michigan women landscape architects exhibiting work in "Landscape Architecture as Art" at the Michigan Women's 23. Lawlis exhibit highlights "River Place Plaza" in Detroit, part of the redevelopment of the original Parke-Davis complex. Redstone is the project architect.

Giffels/Hoyem Basso, has announced its 1988/1989 board of directors: Peter J. Basso, chair; Louis A. Trama, president; Ralph C. Steele, executive vice president; Harry A. Diamond, senior vice president, director of architecture; Paul A. Stachowiak, vice president, director of project administration; Arthur O. Moran, Jr., president and chairman of Giffels Inc. Also elected to vice presidential positions were Daniel F. Christensen, Richard J. DeBeliso, Noray Sarkisian, Jason Wang, and Earl F. Streickfaden.

Holmes Associates, Inc. of Farmington Hills is proud to announce that

ARCHITECTURAL ENGINEER II Salary up to \$23,663

Applicants must be registered as a professional architect by the Michigan State Board of Registration for Professional Architects; OR have a Bachelor's degree in Architectural Engineering and two years full-time engineering experience OR a Master's degree in Architectural Engineering and one year full-time engineering experience.

Good benefits, paid holidays, pleasant work environment.

For further information and official employment application materials, please contact the Oakland County Personnel Department, 1200 North Telegraph Road, Pontiac, Michigan 48053. (313) 858-0530.

*An Equal Opportunity and
Affirmative Action
Employer*

Send check plus \$3 shipping to
MSA Headquarters, 553 East Jefferson Avenue, Detroit, MI



Want Ads

Raymond R. Rieger will receive the Robert P. Brosseau Memorial Award. The annual is given by the Construction Specifications Institute to an industry or associate member who has rendered outstanding service in furthering the objectives and programs of the Institute. He is currently president of the Metropolitan Detroit Chapter.

Harley Ellington Pierce Yee Associates, Inc. have named Alvin Prevost, AIA and Aaron Schreier, AIA Project Administrators. They both had been principals of Prevost Treacy & Partners. In their new positions they will be responsible for the management of major projects. Prevost has 37 years experience in project design and Schreier has 31 years experience. They both worked at one time for Minoru Yamasaki & Associates.

Christopher J. Longe, AIA Architecture & Planning has added Christopher Enright, a recent graduate of LIT, to the firm as an architectural designer.

The Argos Group announced the promotion of Gordon Andringa, AIA from Program Manager to Vice President. He is a U of M graduate.

Smith, Hinchman and Grylls is proud to announce that Charles J. Parise, FAIA, a corporate consulting architect from the firm, has been elected chair of Committee C-24 on Seals and Sealants for the American Society for Testing and Materials. He will lead a 235 member standards-writing committee for two years.

Ashor-Walsh & Associates has a new name, Ashor Associates. The firm is located at 1156 West Huron, Pontiac 48053. The phone number, 313-681-1253, remains the same.

The Kalamazoo Group has been formed by Mark Doonan, Michael Dunn, AIA; Nelson Nave, AIA; and Mike Thumm. They describe themselves as "a loosely knit association of architects, developers and designers." The office is located in the Rose Street Market, Suite #400, 303 North Rose Street, Kalamazoo 49007. The phone: 616-343-0040.

Licensed Architect, creative, meticulous, energetic and experience in health care facility design is seeking a position in Southeastern Michigan. Write Attention Want Ad: The Beaubien House.

Architectural Drafter with 10 years experience in commercial, industrial, institutional and residential architecture looking for position in design development and working drawings. Call Jim Hinkins at 965-1872 or 881-6258.

Experienced drafter with administrative experience would like to work for a small architectural firm that is geared toward residential work. Fluent in Spanish. Contact Ethel Van der Tuin at 313-280-0739, or write 2052 Parmenter Blvd., Royal Oak, MI 48073.

Designer with B. Arch. U of M seeks challenging position in architectural firm. Jonathan Crane, 305 awixa, Ann Arbor, MI 48104, phone 313-662-8432.

Experienced Architectural Designers and Project Managers Immediate openings. Also, construction documentation personnel with minimum of 2 years experience. Send resume to Ken Bryce, Dow Howell Gilmore Associates, 315 Post Street, Midland, MI 48640.

Architectural Drafter wanted full time by Rich and Associates, Inc. CAD

experience preferred but not required. Send resume to Richard Kinnell, 25420 Lahser Road, Southfield, MI 48034.

Architect - Project Manager wanted by Upper Peninsula A/E firm full time. Registration preferred, minimum three years experience and degree required. CADD experience desirable. Send resume to Hitch, Inc., U.S. 41 South, Houghton, MI 49931, phone 906-482-0535.

Designer/drafter with experience in retail, residential and commercial projects wanted. Minimum four years experience and degree. Multi-disciplinary firm: architects, engineers, surveyors and planners. Registration not essential. Send resume to Gove Associates, Inc. 2722 East Michigan Avenue, Suite 200, Lansing, MI 48812, Attn: Dick Schaefer. Phone 517-485-0555.

Architectural/Interior Jr. & Sr. design positions available for work on retail and hospitality projects. Creativity in architectural or interior design required. Degree or qualified experience required. Send resume to Roger Sherman Associates, Inc. 13530 Michigan Avenue, Suite 300, Dearborn 48126, phone 313-582-8844.

Election/Detroit Chapter, AIA

In accordance with the Bylaws of the Detroit Chapter/AIA, the Elections Committee is issuing this Notice at least sixty (60) days prior to the Annual Election Meeting to solicit additional nominations from the membership.

The Elections Committee has made its recommendations to the Board of Directors and has received the Board's approval for the following slate of candidates:

Vice President/President Designate

Arthur Smith, AIA

Treasurer

Jeffrey T. Budday, AIA

Chapter Director - 3 year term

Robert Ziegelman, FAIA

MSA Director - 2 year term (two to be elected)

Daniel Redstone, AIA

Roy "Rocco" Romano, AIA

Associate Director

Stephen Vogel, AIA was previously elected as Vice President/President Designate and will become President following the organizational meeting which is 20 days after the election.

Additional Nominations:

Additional nominatins for any of the offices of Vice President/President Designate, Secretary, Chapter Director and MSA Directors are to be received no later than September 9, 1988 (30 days prior to the Annual Election).

Nominations require a letter from the Nominator and the Seconder. Contact Arnold Mikon, AIA, Chairman at SH&G Associates, 455 West Fort St., Detroit, MI 48226.

Information about all nominees will be mailed to all Chapter members 20 days prior to the Annual Election. The Annual Meeting and Election will be on Tuesday evening, October 11, 1988 at the restored Wayne County Courthouse. Dinner will be at Jacoby's restaurant at 624 Brush between E. Congress & E. Fort in Detroit.

National/AIA Awards Programs

The 1989 AIA Honor Awards Call for Entries was mailed to the membership on August 1. The program is open to all registered architects regardless of the size of their firms or the nature of the projects. The Institute is encouraging the winners of local design awards program to enter their designs in the national program.

Deadlines are fast approaching for the Topaz Medallion for Excellence in Architectural Education; the Twenty-five Year Award; Gold Medal, Edward C. Kemper Award, the Whitney M. Young Jr. Citation; Honorary Member-

ship; Institute Honors (this category has absorbed the former Fine Arts Medal, Allied Professions Medal, Industrial Arts Medal, The Architecture Critics Medal and Research Medal, It also includes the Architectural Firm Award, and the Henry Bacon Medal for Memorial Architecture).

Nominations for some categories are made by the Regional Director, Robert Greager, AIA. Others are made directly to National AIA. Contact Maria Murray, Hon. AIA, Director of the Awards Program at 202-626-7390 for further information.

Obituary

Sol King, FAIA, 78 retired chairman of the board of Albert Kahn Associates died of Alzheimer's Disease on July 3, 1988.

Among the buildings that he designed was Congregation Shaarey Zedek in Southfield, the National Bank of Detroit in downtown Detroit, Sinai Hospital's main building, the Borman Jewish Home for the Aged in Detroit, many Ford Motor Company industrial plants and several buildings at the University of Michigan including the landmark Burton Tower. Many of his buildings received design honors.

He was born in Poland in 1909 and came to Detroit in 1923. He worked in the offices of Sternfels & Brown, Nathaniel Gould, Marcus Burrowes, Lyndon & Smith and joined Albert Kahn in 1935.

Mr. King was a classmate of Raoul Wallenberg, a Swedish diplomat credited with saving the lives of thousands of Jews in Hungary during World War II. Ten years ago he endowed a prize for architecture teachers and organized a lecture series at U of M in Wallenberg's honor.

He was active in the Detroit Chapter/AIA and the MSA. He served as director and vice president of the MSA. He received the MSA Gold Medal in 1966. He was the first architect ever to Society of Detroit. He was chair of the Michigan State Board of Registration for Architects.

Survivors include his wife, Jennie; a daughter, Susan Ryback; a brother; three sisters; and five grandchildren.

Suren Pilafian, FAIA died of cardiac arrest on August 5, 1988 at Mt. Carmel Hospital in Detroit. He was 78. He came to the U.S. with his family from Armenia in 1910, moving to Detroit in 1940.

He graduated with a degree in architecture from New York University and did postgraduate studies at Columbia, Pratt Institute and L'Ecole des Beaux Arts. He won a 1936 international architectural competition for the Stock Exchange Building in Teheran, Iran and worked on the design of the 1939-40 New York World Fair with Norman Bel Geddes. He was self-employed for most of his career but in 1947 he entered into a partnership with Frank Montana. He designed the master plan for Wayne State University and the Community Arts Building there. Other projects include St. John Armenian Church in Southfield; and St. Clements Ohirdski Macedonian Bulgarian Orthodox Church in Dearborn.

Survivors include his wife, Patricia; three sons, Michael, Peter and Christopher; a daughter, Sherrie; five grandchildren; one great-grandchild; and two sisters.



Beaubien House
553 East Jefferson
Detroit, MI 48226

BULK RATE
U.S. POSTAGE
PAID
DETROIT, MI
PERMIT NO. 2048

ADDRESS CORRECTION REQUESTED
TIME VALUE

CALENDAR

SEPTEMBER

- 10 "Frank Lloyd Wright's Vision for Madison" Day long seminar featuring lectures, slides and discussions in various settings throughout Taliesin East. Call Susan Lockhart at 608-588-2511.
- 13 **Grand Valley Chapter/AIA**
"On the Future of Architectural Practice" featuring John Hartray, AIA at the Grand Rapids Art Museum.
- 15 **Flint Chapter/AIA** Joint Dinner Meeting in Frankenmuth with CSI and **Saginaw Valley Chapter/AIA**
- 15 **MidMichigan Chapter/AIA** noon meeting
- 15 Designer Preview, Internationally renowned designer Jay Spectre 9 a.m. to 8 p.m. at Michigan Design Center.
- 16 **Detroit Chapter/AIA Allied Arts Festival**
Cost: \$20.
- 16-17 U of M School of Architecture Alumni Weekend
- 17 U of M City & Suburb Symposium followed in p.m. by a tailgate party at the School of Architecture Sculpture Garden. Bird house entries displayed.

- 19 **Saginaw Valley Chapter/AIA** Saginaw Holiday Inn. Registration begins at 12:30 p.m. for code seminar for architects & building officials. Cost: \$20 includes dinner at 6:15 p.m.

- 19 **Western Michigan Chapter/AIA** Honor Award Program submissions due

- 21 CSI Product Fair - Southfield Pavilion

- 23 **MSA EXCOM/Upper Peninsula Chapter/AIA**

- 28 8th Congress of the International Union of Women Architects begins in Washington, D.C. Contact L. Jane Hastings, FAIA 206-329-9600.

OCTOBER

- 2 **Detroit Chapter-AIA/ASID** House Tour Bloomfield
- 3 REHAB FOR PROFIT; New Opportunities in Real Estate, Call 800-874-6500.
- 4 **Grand Valley Chapter/AIA** Grand Rapids Art Museum Charles Moore, FAIA tentative
- 5-8 Association for Preservation Technology Conference, Boston. Call 617-350-7032 for information.
- 6-8 COMPOSED ORDER; THE ARCHITECTURE OF ALDEN B. DOW National Conference and Exhibition in Midland, call 517-832-4478.

- 7-8 University of Michigan Real Estate Forum Sponsored by Business School and College of Architecture. Call 313-763-5775 for registration details.

COVER:
Savin Residence
Allen Residence
Charles Blessing, FAIA
rendering

MSA BULLETIN

Vol.11 ISSUE 7

EXEC. DIRECTOR Rae Dumke
EDITOR Lynne Merrill-Francis
ADM. ASST. Cathy Brooks
STAFF Evelyn Giordano
Mary Lou Williams
Barbara Willett

PUBLICATION COMMITTEE:
Chair Tim Casai, AIA
The MSA Bulletin is published by the Michigan Society of Architects and is distributed free of charge to all members. For advertising rates write: Beaubien House, 553 East Jefferson, Detroit, MI 48226; 313/965-4100. Circulation 2,000.