

M S A



MONTHLY
BULLETIN

100 YEARS

■ ■ ■ ■ ■ ■ ■ ■ ■
SEPTEMBER 87

The Heart of Michigan — Past, Present, and Future



*Richardo Anselmo, AIA
President, Mid-Michigan Chapter, AIA*

The Mid-Michigan Chapter area is comprised of three counties in the geographic center of the "palm" of Michigan. It is also the "heart" of Michigan being the center of government at our capital city, Lansing. We feel that we are at the crossroads since major traffic routes predating the founding of MSA 100 years ago pass through Lansing in all directions.

Architecture in the Mid-Michigan Area has had its impact mostly in Lansing since its designation as the capital of Michigan. The best known architectural landmark has been the state capitol designed by Elijah E. Myers in 1872. Other historically significant buildings were built within the Michigan State University campus in East Lansing, starting in 1855.

The Mid-Michigan Chapter has always been a mid-sized organization since its beginning in the 60's. Before that, AIA membership within our area was affiliated with the Western Michigan Chapter — largely with Grand Rapids. The pioneer firm in the area was the Warren Holmes Company founded in 1920. It was one of the largest architectural and engineering firms outside Detroit and was well known for its school designs. It was the "training school"

for most of Lansing's drafters, architects and engineers. Most of the registered architects who started their own practice in the Lansing area were alumni of the Warren Holmes Company. The other firm which contributed to the training of Mid-Michigan architects was that of Clark R. Ackley Architect. I had the good fortune of being an alumnus of both firms. These offices are no longer in existence but their impact on the professionals who are in practice is still felt and reminisced at many gatherings of architects.

The Lansing area's three major generators of income are the State of Michigan, General Motors, and Michigan State University. These three institutions have also generated most of significant architectural work in our area.

The State Government Complex, in the heart of downtown Lansing and in the Secondary Complex located southwest of the city, have major buildings built largely after the 1950's. Presently construction is underway for the State Library, Museum & Archives designed by Wm. Kessler and Associates. Plans are underway for a major renovation and underground additions to the State Capitol Building by Richard Frank, FAIA, a fellow alumnus at Warren Holmes Company, and Gunnar Birkerts, FAIA.

General Motor's Oldsmobile has always been considered the home town car. GM's various plants around the city have provided area architects with a lot of their "industrial design experience." The remodeling and up-grading of both the Oldsmobile and Fisher Body complexes have kept Mid-Michigan architects busy.

Michigan State University in East Lansing saw its biggest growth in the 50's and 60's. With its expansion came the great building boom on its vast campus, particularly south of the Red Cedar River. Today, MSU's campus contains major works by a variety of MSA member firms. Slowly but surely rising above the



*Proposed Summit Building,
Lansing, Michigan*

*Stein, Hinkle, Dawe, Wood & Johnson —
Architects, Engineers Planners*



*United States Post Office Delta Branch,
Lansing, Michigan*

*R.D. Anselmo & Associates Architects/
Interior Designers*



*Hannah Research & Development Center,
East Lansing, Michigan*

MJK Architects Engineers Planners

ground is the new 15,500 seat All-Events Building designed by Hoyem Basso/HNTB Kansas City, which will be the major sports arena in Mid-Michigan. The \$43 million dollar arena is expected to be completed by July of 1989.

There has been a lull in construction in Lansing's central business district during the past few years, but

The Heart of Michigan — (Continued)

now it has the manifestations of more building to come. Lansing's downtown development is beginning to show off major building projects such as the Radisson Hotel and the Lansing Center, a new exhibition/convention center by TMP on the banks of the Grand River.

Architectural practice in the Lansing area is performed largely by MSA members. Firms in our area are small in number but varied in size and type of practice. The range is from one-person firms such as retired Elmer Manson's Manson Architectural to MJK Architects & Engineers with a staff of 32.

A sampling of Mid-Michigan Chapter firms and their present practice includes the following:

MBDS Architects — formed out of what was the Mayott/D'Haene firm and Warren Holmes Company. They designed the 10 story Accident Fund of Michigan Building in the downtown area and are also involved with church projects of various types. They have a staff of 15 plus two CAD systems.

Bernath — Coakley Associates — a two-principal office that has been in business in the Lansing area since 1983. They work on a variety of projects, but specialize in restaurant and church designs. Currently they have a staff of five.

MJK Architects, Engineers Planners, Inc. — founded more than 40 years ago, it is the largest in the Mid-Michigan area. Major clients have been in the industrial and educational markets.

Stein, Hinkle, Dawe, Wood & Johnson — Architects Engineers and Planners was founded in 1962 and just celebrated its 25th anniversary. With a staff of 16, they maintain a varied practice in multi-family housing, commercial, medical, religious and governmental projects.

R.D. Anselmo & Associates — basically a one-principal office started in 1982, it is an architectural and interior design firm. Work includes projects for MSU, the U.S. Postal Service, the State of Michigan, and

custom designed residences. The strong orientation towards interior architecture and design has produced numerous commercial and residential interiors, renovations and additions.

Mid-Michigan has benefited greatly from the presence of two major educational institutions in the Lansing area. Both MSU and Lansing Community College have contributed to the design profession and have turned out graduates who are now actively involved in design and architecture. LCC's Architectural Studies Center offers a two-year program which produces technicians in the fields of architecture and computer graphics technology. Its' Michigan High School Architectural Design Competition, now in its 8th year, has attracted hundreds of aspiring architects from across the state.

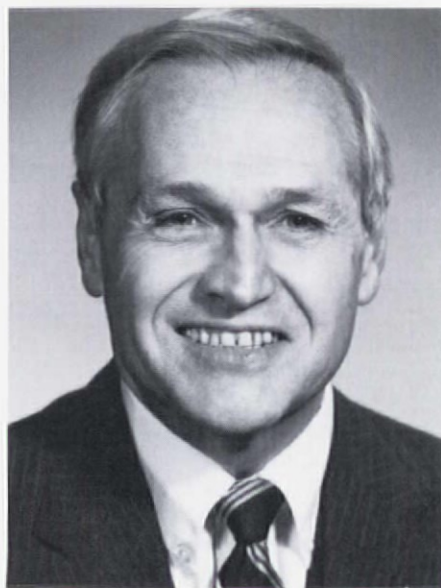
The members and officers of the AIA Mid-Michigan Chapter, Lansing Area institutions and other allied professions look forward to the end of the 80's with great anticipation for the 90's. With momentum resulting from the revitalized economy of the Capital area, most of the AIA member firms, business and civic leaders I have spoke to have projected better times in the Mid-Michigan tri-county area. Lansing's economic growth, although largely dependent upon the three major sources of income, continues to improve through the influx of new industries, and other investors. All these augurs for a better future for the design profession in the "heart" of Michigan.



*Indoor Tennis Facility
Michigan State University
East Lansing, Michigan*

*R.D. Anselmo & Associates
Architects/Interior Designers*

Regional Director in Washington



Robert Greager, AIA

In July, I left nine days of above 90 degree weather to arrive in Washington, D.C. for their 19th, 20th, 21st and 22nd continuous days of a heat wave which nudged 100 degrees.

All three Commissions; Design, Membership, and my commission, Practice, met simultaneously to review and act upon current issues, as well as programs and budgets for all of the 1988 national committees.

Each Regional Director is assigned as liaison to a national committee within the commission. Last March, the newly appointed vice-chairs for each committee in the Practice Commission met and started planning their programs and budgets for 1988. During the July meeting, they presented an overview of this year's accomplishments plus next year's goals and programs and their related budgets. Although the presentations were relatively formal, each was followed by an informal series of questions by both the commissioners and the other vice-chairs. The questions were aimed toward gaining a full understanding of next year's programs.

On the day following these presentations, the commission members

Regional Director (Continued)

met to establish program recommendations and their related budgets for action by the Executive Committee. The staff has assembled a book that provided us with a detailed line item accounting which translated programs into dollars. Although we were given a 4% increase overall in our commission budget, I personally found it very difficult to accommodate all the program opportunities within the budget.

An extra effort will be made this coming year to provide a more complete and on-going report for the many achievements of the National Committees so that Local and State chapters can take advantage of their fine work. As an example, this year, with our new state resolution endorsing "selection of design professionals by competency", a national committee will develop three supportive papers. One on state construction projects, another on municipal buildings and a third paper for one-time government structures such as a city library or an historic building.

The education of "freshman" regional directors is an ongoing process and I am pleased to have this opportunity to share this experience with you.

Associate Director's Report

David Aten, Associate

The deadline has passed and the entries are in for the 1987 Associate Member Drafting Competition. The quality of the entries was exceptional, but participation was underwhelming, to say the least. There were a grand total of 10. Look for the results in the next issue of the *Bulletin*.

I just received a post-convention report from ex-Detroiter, Chris Gibbs. Convention business included lengthy discussions of Associate Member issues. A resolution to

establish an Intern Member category within the AIA roused the otherwise quiet early morning session. The resolution, originated by the Florida Association/AIA, proposed to redefine the current Associate Membership category and adjust the dues structure. The Board of Directors took "no position" and the resolution was defeated by a narrow vote.

This was the third year in a row that major Associate issues came before the General Business session. The Membership Committee has agreed to initiate an investigation into the Associate Membership Category and devote its attention to resolving the issue by the 1988 convention. Gwen Williams, from that committee, has outlined a comprehensive plan to survey and develop a viable solution to the "concerns expressed over distinguishing architectural interns from others in the Associate category."

The Associates Reception, hosted AIA President Don Hackl, was well attended. The "standing-room only" crowd of students, Associates and AIA Members created a forum for a healthy (sometimes heated) discussion on intern architect's issues. Hackl was introduced to the group and opened discussion on the Institute's Education Initiative. He presented his view on the current status of the educational process in accredited architectural schools and fielded questions and opinions from all sides. He had such a good time that he asked Tom Eyerman, FAIA (treasurer for 1988) to continue the discussion and report any outcome. He also asked for an activity to continue communications to keep the president in touch with the interns such as the AIAS "Forum".

Although I hate to bring up the subject again, I have to make another pitch to get someone out there to replace me on the Board next year. This is my second year and it has been educational, entertaining and a great experience but two years is enough for any one person. It's time to get someone else's viewpoint. If anyone

is interested, call me at 616-774-2313 for more information. If no one reruns, there will be no Associate representation next year. Think about it.

Barrier Free Design Forum: New Options For Michigan Businesses

The recent changes in Michigan's Barrier Free Design Laws and downtown development policies that benefit small business will be the subject of three half-day forums that are being sponsored by the House Subcommittee on Small Businesses, chaired by Representative Debbie Stabenow, and the departments of Commerce and Labor. The Chamber of Commerce from each location will host the event.

Streamlined procedures, new tax deductions, barrier free design options, new financing possibilities and actual business experience with barrier free design will be presented.

The forums are scheduled on successive Mondays from 8:30 a.m. to 12 noon and will be held in Lansing on October 5th; in Detroit on October 19 and in Grand Rapids on October 26. The program is free of charge. To obtain a brochure and registration form, write Rep. Debbie Stabenow, P.O. Box 30014, Lansing 48909 or call 517-373-1770.

Cesar Pelli To Speak



Cesar Pelli, FAIA

The Detroit Chapter/AIA, in celebration of its 100th Anniversary, has inaugurated an Allied Arts Award Program. The goal is to encourage the collaboration of artists, architects and owners in bringing art into architecture and the spaces it defines.

The Allied Arts Festival will be held at the Cranbrook Academy of Art Museum on September 18, 1987. A champagne reception at 5:30 p.m. will start the proceedings. The awards presentation will include slides of the winning entries and then internationally known architect, Cesar Pelli, FAIA will speak.

Pelli, who was associate architect with Eero Saarinen and Associates from 1954-64, has a special tie to the Cranbrook tradition and may share some insights into the value of the collaboration of artists and architects.

Contact headquarters at 965-4100 for reservations. Ticket \$20.

Firm News

Giffels Associates, Inc. has named James Fountain, AIA to the position of Business Development Associate. He is a graduate of U of D and resides in Huntington Woods.

Tower Pinkster Titus Associates has restructured its management organization. Robert Tower, AIA will continue as President; Jerry Pinkster,

AIA as Treasurer/Executive Vice President; and John Titus, PE, is Secretary and Vice President of Engineering Services. In addition, two new officers have been appointed. Roger Meintz, AIA will serve as Vice President of Production and Terry Schley, AIA as Vice President of Architectural Services.

Meintz has been with the firm for 14 years as a spec writer, designer, project manager and contract administrator. Schley is a LIT graduate and has eight years experience in medical, commercial and industrial design, project administration and construction document production.

The WBDC Group has opened its Southeastern Michigan Office at 2000 Tower, Prudential Center Building, Suite #1390, Southfield 48075. The phone number is 313-358-5080. Robert Greager, AIA will manage the newest branch of the 27 year old Grand Rapids architectural firm.

Kingscott Associates, Inc. has appointed Robert McGraw, AIA as Director of Operations. He has been with the office for 6 years and was the designer for the award winning Perry Child Development Center in Ypsilanti. He is a graduate of U of M.

Design Plus has moved to 48 Fountain NW, Grand Rapids 49503.

Smith, Hinchman & Grylls Associates, Inc. has chosen Ted Sutherland, AIA to direct its Health Facilities Division. He has planned and designed medical buildings throughout the United States. He joined SH&G in 1971.

Terra, the development arm of SH&G, has recently hired Jay Hunter as General Manager

Quinn Evans Architects announced that two members of its staff have been appointed by the Mayor of Ann Arbor to public bodies. Ilene Tyler, AIA will serve on the planning commission and David Evans, AIA will serve on the historic district commission. The firm is preparing the construction documents for a museum quality restoration of the windows of the Octagon in Wash-

ington, D.C.

Architects Four, Inc. is proud to announce that Principal, Lorrie Sipes, AIA, a Federally qualified historical architect, has been named to the jury for the Milford Historical Society's Annual Preservation Awards.

Want Ads

Registered Architect now working for the State of North Carolina would like to move back to Michigan. BS in Architecture from LIT, 1975. Licensed architect in Michigan and licensed general contractor in North Carolina. Contact: Larry Bishop, AIA, 916 Buckingham Road, Garner, North Carolina 27529. Phone 919-779-0959.

Architects Design: Architectural Designer with 3 to 5 years minimum experience. Construction Documents with 3 to 5 years detailing experience. Candidates will work on challenging commercial and residential projects involving various construction systems. Send resume to: Neumann/Smith & Associates, 26877 Northwestern Highway, #100, Southfield, MI 48034, Attn: Richard Mysliwiec, AIA.

Cincinnati Architectural Firm seeks architects for the following: designer, project architects, job captains. Send resume to the Personnel Director at Baxter Hodell Donnelly Preston, Inc. 3500 Red Bank Road, Cincinnati, Ohio 45227.

Assistant City Planner for city of 60,000 near Grand Rapids. Degree in architecture or urban planning required. Send resume to Personnel Department, City of Wyoming, 1155 Twenty-eighth Street, S.W., Wyoming, Michigan 49509.

British Architect with commercial and industrial experience seeks position in the Midland area. Contact: Richard Ludlow-Fisher, 15 Norwood Avenue, Apartment 5B, Summit, New Jersey 07901. Phone 201-277-4362.

Architects & Interior Designers Plan Birmingham House Tour

"One Hundred Years of Design Excellence" will be apparent on October 4th during the Birmingham House Tour jointly sponsored by the Detroit Chapter/AIA and the Michigan Chapter/American Society of Interior Designers (ASID). The theme is especially appropriate for the architects centennial anniversary. Houses dating from 1885 to 1985 are featured.

The tour begins at Seaholm High School at the corner of Lincoln and Cranbrook Road in Birmingham. From there shuttle buses will take tour participants to some of Birmingham's most elegant environs.

Three homes were designed by architects for their own families. (picture 1) Architect Harold VanDine, FAIA, has created a house for the 1980's from one originally constructed in 1885. What was once a Victorian farmhouse is now a sophisticated urban residence. Although it is contemporary in style with skylights and high clerestories, VanDine has developed a modern home while faithfully maintaining the front and sides of a historic structure. The history of Birmingham over the past 100 years is summed up in this one dwelling.

(picture 2) Local architect **Irving Tobocman** is known for the unique houses he designs for others. In 1983 he created one for himself and his wife Laura which is a showcase for their combined talent. They designed most of the furniture themselves and built and installed all of the cabinet work. The landscaping that the Tobocmans' designed unifies the composition.

(picture 3) **Robert Ziegelman, AIA**, designed two houses on adjacent sites overlooking a wooded ravine. Both houses are similar in scale and have a continuity of materials and finishes. Architect Ziegelman says that the design for his own house evolved from a "child's first concept of what a house looks like." From this simple idea of form, he carved out multi-level living spaces. In the great room, windows stacked like building blocks

offer a view of the trees outside. This contemporary interior is furnished with vintage 1965 Knoll pieces. The Ziegelmans' have a delightful collection of art, including works by well-known artists and a sculpture by Esther Ziegelman.

(picture 4) The tour continues with a stop at one of the most famous neighborhoods in the country, Bloomfield Hills. Interior Designer Steve Teich, ASID, is working with the present owners of one of the original homes in the village. Extensive renovations have taken place over the past year and a half in this French Normandy stone country house. A dynamic blend of old and new is created through a selection of Country French and English pieces. Fine Oriental rugs, antique weaving and sculpture accent the interior.

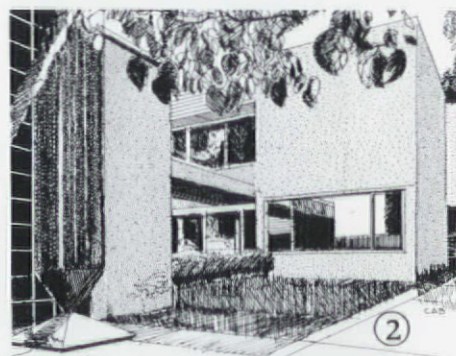
(picture 5) The "mid-fifties" ranch takes on a new look for Linda Anger, ASID. As designer and owner, Ms. Anger has creatively evolved this compact home into a totally efficient environment for a busy career woman. Through extensive renovation and custom cabinetry, smaller spaces became "larger" and more functional. The flow of the interior expresses a personal design statement and continues through to the exterior landscaping.

(picture 6) The 1930's half-timber English style house, with interior design by Melissa Brown, ASID, is filled with a melange of antique furniture and object d'art. Dramatic combinations of colors and fabrics in contemporary upholstery provide the background for a diversified art collection. The traditional style of the house has been preserved and integrated into the design. The owners appreciation for quality is apparent throughout.

(picture 7) A charming traditional home has been designed by Margie Coogle-Cunningham, ASID, for an active family with six children. Their love of the house and desire to create a comfortable atmosphere is obvious. Warm tones of mauve, rose and yellow are combined with original

hardwood flooring throughout the house. Oriental rugs and an art collection that changes periodically provide accents of color. The home accommodates an informal active family lifestyle and is in keeping with the owner's desire for maximum flexibility.

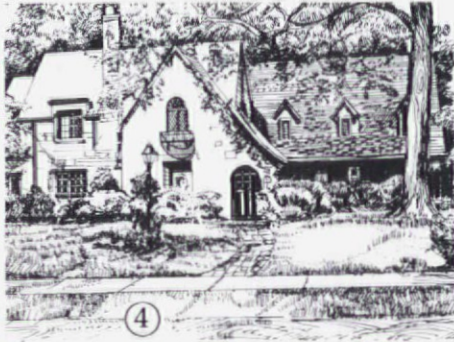
Tickets for the AIA/ASID Birmingham House Tour are \$12 and may be purchased in advance by contacting the DC/AIA at 965-4103; Hudson's Northland and Eastland Interior Design Studios; and Pierson Interior Design Studios at Somerset Mall. A limited number of tickets may be purchased the day of the tour at Birmingham Seaholm High School.



Michigan Outdoor Sculpture

Birmingham House Tour

- Sunday, October 4, 1987
Rain or Shine
- 11:00 a.m. until 5:00 p.m.
- \$12.00 per person, limited availability. Please, no children under 12 years.
- Depart from Seaholm High School by motor coach. Shuttle service until 3:00 p.m.
- For further information or ticket pick-up call 965-4103.
- Mail check with self-addressed, stamped envelope to:



The drawings for the houses for the DC/ AIA House tour were produced by Charles Blessing, FAIA. This is his second set of house tour drawings. Mr. Blessing has had a long and distinguished career as an architect and planner. In 1976 he was cited by the AIA with a medal for his "unique and artistic documentation of many of the world's great cities." Said the jury in making the presentation: "During the course of his life as an architect and city planner, Blessing has documented the cities and places of this world as has no other person before him. His drawings . . . have become a more meaningful way of expressing and recording the drama, form and grain of the man-made environment." He has received numerous awards and citations in addition to the AIA award; he has the Detroit Chapter/AIA Gold Medal and he was the first recipient of the Hastings Award. He received the prestigious "Progressive Architecture" Urban Design Award and also served as a juror. His drawings have graced the pages of many of the world's best known publications.

This portfolio will be used in brochures and posters for the tour and a framed copy will be presented to each of the home owners.

A major exhibit of outdoor sculpture will be on display daily on the grounds of the Southfield Civic Center, 26000 Evergreen Rd., from September 1 to October 31, 1987.

Large works in wood, metal, concrete and mixed media will be presented in an outdoor sculpture park bounded on three sides by the contemporary architecture of Southfield's Civic buildings. According to Louis Redstone, FAIA, the Business Consortium for the Arts and the City of Southfield are sponsoring this exhibition to encourage business support and participation in the arts, to stimulate the cultural environment in the state and to enhance public awareness and appreciation for outdoor sculpture by acclaimed Michigan Artists. Redstone co-chairs the event with Lucius Theus, Civic Affairs Director for Allied Corporation.

Bob, Balthazar, Bocci & Beautiful

History was on the minds of many of the delegates to the 44th annual MSA Midsummer Conference. Both the Grand Hotel and the Society are celebrating their centennial anniversary this year. The Hotel was decked out in its best bib and tucker for the festivities and Bob Raisch's play "Somewhere in My Mind" got the architects into a nostalgic mood.

To continue the old time spirit we offer the following bit of MSA history: The annual midsummer conference started out in 1940 as the "Little Convention" to dampen the long distance travel complaints of members who were assigned to the Upper Peninsula Division of the Society. In 1941, Mackinac Island was considered neutral ground and the Grand, which was having financial problems, offered rates that were "no more than any other good hotel." World War II called a halt to the annual trek north but it was picked

Bob, Balthazar . . . (Continued)

up again in 1945.

Balthazar Korab doesn't go back to the 1940's with the MSA but he has been taking pictures in Michigan since the early 50's and has documented a lot of recent architectural history. The turn out for his slide presentation was a tribute to his status as an internationally acclaimed photographer. He is also a witty and insightful speaker. He has another presentation coming up at the MSA Convention this fall. Don't miss it or his new book, "Michigan."

Bob Raisch and the Fudgetime Players topped last year's production. There was live music, sets, performers that could really sing like Jan Casai and many who have developed a unique stage presence. Leading man, Fred Blackwood was gorgeous and Jim Shane as Frank Lloyd Wrong really looked his part. You had to have been there to appreciate the dramatic impact of Ken Rule wearing a barrel and talking with his hands. President Norm Hamann in black tie offered a bit of dignity to all the Saturday night proceedings.

Bocci, on the lawn of the Grand is the quintessential summer sport and Marylou and Ray Williams had the tournament well in hand. Dick Fry and the whole Midsummer Committee also had everything under control until Rae Dumke walked off the stage with Fry's script tucked into the signed copy of Korab's new book, "Michigan" (available at the bookstore), that was the Society's gift to her.

History also formed an important part of the Business Meeting. Following a presentation on the State Capitol by Richard Frank, FAIA, the members approved a resolution in support of its restoration that was introduced by Tom Wikle, AIA. (Text of resolution follows.)

MICHIGAN STATE CAPITOL BUILDING

RESOLUTION

Adopted by the Michigan Society of Architects
in Conference at Mackinac Island August 7, 1987

WHEREAS: The Michigan Society of Architects through the years has expressed its concern for and interest in the Preservation of the Michigan State Capitol Building, and

WHEREAS: In 1965 the Michigan Senate asked the Mid-Michigan Chapter of the AIA to present its view of the future of the State Capitol and the Chapter endorsed the establishment of a state-wide MSA State Capitol Committee which concluded that "the State Capitol is a structure which is architecturally and historically significant in our State and Nation", and

WHEREAS: The architect of the Capitol, Michigan's own E.E. Myers, designed significant major public buildings including State House for Texas and Colorado, and

WHEREAS: E.E. Myers and present at the founding of our professional society in 1887, and

WHEREAS: Many states, Tennessee, California, Nebraska, Texas, Colorado, Illinois, New Jersey, Wisconsin, and Minnesota and even Ohio I.E. have completed or are in the process of restoring their capitols, many of which are newer than the Michigan Capitol, and

WHEREAS: The Legislature commissioned a master plan for the State Capitol and grounds that was produced with the guidance of the "Friends of the Capitol" a statewide organization composed of architects and other citizens, and

WHEREAS: The MSA has been instrumental in preserving other historically significant Michigan structures such as the Biddle House, Orchestra Hall, and the Beaubien House, and

WHEREAS: Individual members of the MSA have acted in their communities to preserve their cultural and historic resources, and

WHEREAS: The State of Michigan is celebrating its Sesquicentennial and the MSA is celebrating its Centennial at its 44th Annual Midsummer Conference in the 100 year old Grand Hotel. Now therefore, be it

RESOLVED: That the Society support the preservation and restoration of the Michigan State Capitol Building, and that the Society commends the "Friends of the Capitol" for its perseverance in advocating the preservation of this historic building, and be it further

RESOLVED: That the Society urge all elements of State Government to take such action as may be appropriate to assure that the preserved Michigan State Capitol Building continues as the focus of our Sovereign State.



Dick Fry, Rae Dumke,
Norm Hamann on stage
with the coveted Bocci
Trophy

Balthazar Korab,
Ace photographer



"A Young Architect of the Year is in this picture". L to R: Barnaby Fry, Carl Roehling, Dave Larsen, Kirk Delzer, Tim Casai, Ken Rule



Ray Williams
making sure that
Mary Lou has
the Bocci scores
right

Photos by: Edward Francis, FAIA 1987 Midsummer
Conference Mackinac Island, MI

Grapevine

Don't forget "America By Design" the new PBS series on architecture that will begin in September. The Detroit Chapter, Grand Valley and the Western Michigan Chapter will all underwrite programs in their areas. The Chapters will be recognized via a series of 10 second spots . . . **Good News!** Construction rebounded 9% in June after a two months decline according F.W. Dodge . . . The 1988 MSA Convention will be at the new TMP designed Lansing Center . . . **President Norm Hamann** had his picture and a very nice story about the MSA in the July issue of "Michigan Business" . . . Need something hauled in the Ann Arbor area? **Dick Fry's eldest son, Barnaby**, has a new hauling business. He will move anything anywhere (call 761-7790) if he gets his truck fixed and if Hollywood didn't call as a result of his performance with the **Fudgetime Players** on Mackinac. Many daughters and sons of architects and producers helped out with the production. A **MSA Hug** to them all . . .

Grapevine (Continued)

Russ Hinkle is the new chair of the Mason School Board . . . "**CAM Magazine**", published by the Construction Association of Michigan has been doing a great job lately covering architects and their buildings. A thank you and/or a liquid libation might be an appropriate offering when you next meet a CAM member. The folks over at **MSPE**, the Michigan Society of Professional Engineers, have been very nice to architects too. They sent a birthday tribute resolution to Mackinac. **ESD**, the Engineering Society of Detroit, will publish an anniversary story in the October issue of their magazine. All that PR is better than a bouquet of roses . . . **Louis Maraldo** just received the Charles Witt Memorial Award from the National Terrazzo & Mosiac Association . . . **Duncan**

Black, AIA late of the Mid-Michigan Chapter/AIA has been promoted by the Cannon Corporation to director of marketing for its Western New York office . . . **Thomas Battles, AIA** is the new president of PCI, Prestressed Concrete Institute . . . **Lansing Community College Students** produced the first set of computer drawings considered acceptable for the Historical American Building Survey. They won the Charles Peterson Prize for their drawings of the Herrmann House on the campus in Lansing . . . **Sharon Sutton, AIA**, associate professor at Uof M was one of 40 Americans to receive the Kellogg National Fellowship. She is using her grant to study the effects of the urban environment on children in the U.S. and Mexico.

More Want Ads

Senior Designer & Project Architect Design oriented architect with proven experience in commercial design and a Project architect with 5-10 years experience in management, design development and production drawings wanted. Excellent salary and benefits. DeWinter Associates Inc. Attn: Stephen Fry, AIA, 500 River Front Plaza Building, Grand Rapids, MI 49503 or phone 616-774-2313.

Building Arts Softball League Standings

As of July 30, 1987

Southfield/Bloomfield Hills/Livonia League

League Representative: Mark Karaba — Neumann/Smith Associates (352-8310)

Team	Standing
Lefkowsky, Bobish & Associates	0-9
Neumann & Smith Associates	2-7
Redstone Associates	6-1
Nudell/Ryan & Associates	3-4-1
R.E. Dailey	4-5
T.M.P. Associates	6-2-1
Wah Yee Associates	7-2

Birmingham/Troy League

League Representative: David Andruccioli — Catallo Associates (649-8800)

Team	Standing
Dunaj Schlitt & Associates	5-5
Anthony S. Brown	7-4
Catallo Associates	7-3
Hoyem-Basso Associates	5-4
Luckenbach & Zeigelman	3-6
Smith & Schurman/Wolf	5-5
DesRosiers & Associates	8-3
Progressive Associates	0-10

Detroit League

League Representative: Lori Pyka — William Kessler & Associates (963-5906)

Team	Standing
Blount Engineers	4-5
William Kessler & Associates	2-7
McCafferty & Associates	9-0
Rossetti & Associates	2-7
Schervish, Vogel, Merz	5-5
Smith, Hinchman & Grylls	5-4
Harley, Ellington, Pierce, Yee Associates	4-4
Ford & Earl/EAM Engineers	5-4

League Commissioners:

Tom O'Brien — Wah Yee Associates (353-3990)
Tim Zawodny — Luckenbach & Zeigelman (644-0600)
Mike Glicker — Harley, Ellington, Pierce, Yee Assoc. (354-0300)

PERFORMANCE

PRODUCTIVITY

ACCURACY

SUPPORT

-Realize the versatility of a high performance CAD system!

-More than double drawing and design productivity!

-Ensure drawing and design accuracy!

-Enjoy service and support from the best team of CAD specialists in the business!

MSA CONVENTION SPECIAL

\$299.00 Per Month

See us at Booth 44 for details on this COMPLETE CAD SYSTEM!

Advanced Business Systems, Inc.
4080 West Eleven Mile Road
Berkley, MI 48072
(313) 544-9780

MSA Preliminary Program

Wednesday

MSA Board of Directors Meeting

Design/Paul Kennon, FAIA, President CTS Sirrine

The Cranbrook Vision: Past & Present Roy Slade, President Cranbrook Academy

IDP Associate Meeting

Host Chapter Party/"The Best of Times" Henry Ford Museum

Thursday

Dow Alumni/Dearborn Presbyterian Church/Wm. Gilmore, AIA

Before You Sign Your Next Contract . . . Paul G. Sieben, Chmn. AIA Documents Committee

The Context of Architecture: Integrating Land, People and Buildings, William Johnson, Landscape Architect William Johnson Associates

Spouse Self-Esteem of Life Transitions Brunch, Hyatt Regency

Exhibition & Luncheon

AIA Honors and Fellowships, Maria Murray, Hon. AIA, Director Awards Program AIA.

Renovation/Richard Fry, AIA

Balthazar Korab/Photography

Products/Michael & Kathy McCoy, Cranbrook Academy of Art

Education and the Profession: The Next Step/Student-Professional Event

Exhibition Reception & Dinner Buffet

Marketing/Peter McLaughlin MSA/SMPs "Sherlock Holmes meets Leonardo Da Vinci"

Friday

MSA Business Meeting

A short history of American Automobile Design: A Car Designer's View. Bill Porter.

Gretchen Bellinger, ASID Interior Design

Exhibition/Luncheon

Naval Architecture/Britton Chance, Chance & Co.

The Michigan Five: Homes for Architects by Architects

Paul D. Bowers, Jr., FAIA

Norman F. Carver, Jr., AIA

Robert Ziegelman, AIA

Kenneth S. Neumann, FAIA

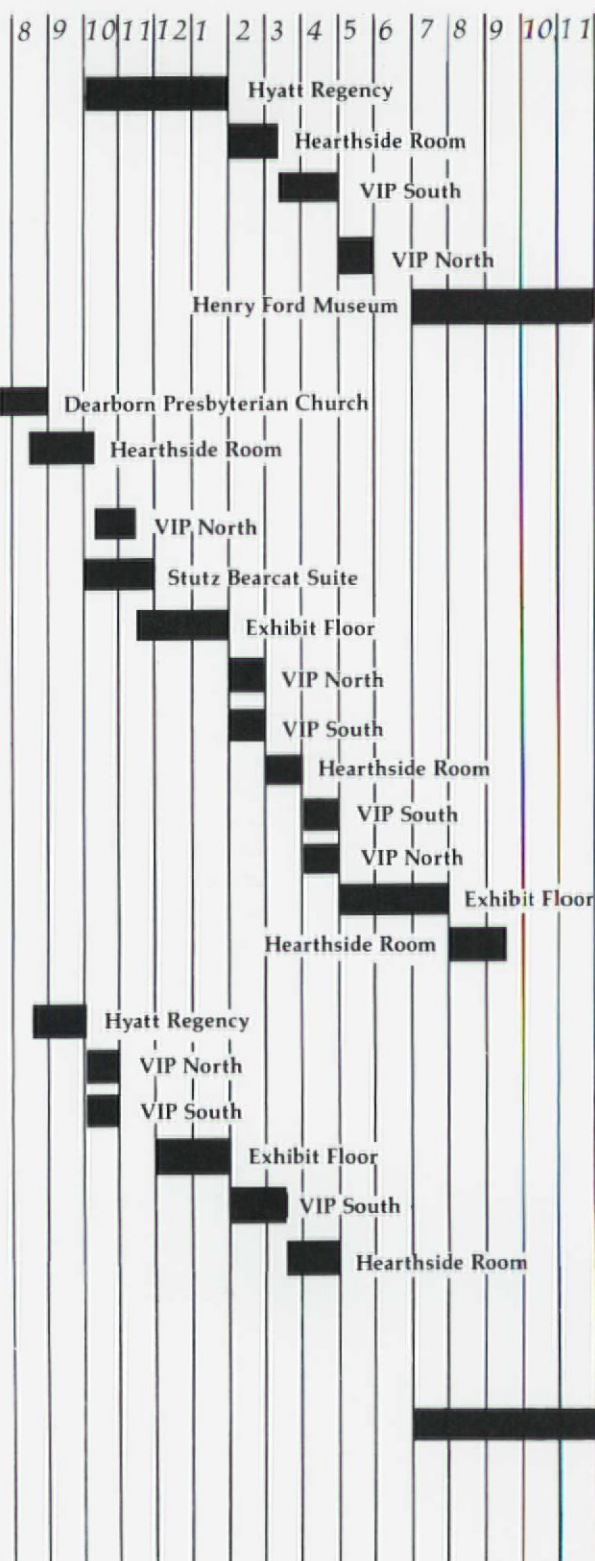
Harold Van Dine, Jr., FAIA

MSA Design Awards

Beaubien House Opening Reception

Detroit Institute of Arts Dinner & Program

Times:



72nd Annual MSA Convention

Fairlane Manor, Dearborn, October 21-23, 1987

3 Day Package	Fee	Total
Advance Registration	100	_____
Register at Convention	125	_____
Spouse Registration	25	_____
Student	5	_____
Exhibits Only	No Charge	_____

Note: Three-Day Package Registration fee includes all seminars, the Exhibitor's Design Party, and lunch on the exhibit floor on Thursday and Friday.

Spouses registration fee includes all seminars, exhibits and the Exhibitor's Design Party on Thursday evening.

Student registration fee covers the seminars and exhibits. Meals are not included.

Design Professionals include members and employees of the following: AIA, ASID, IBD, PSMA, ASLA, MSPE, CEC, CSI, MSRLS, MSPO, AGC, SMPS and all employees of A/E firms.

The exhibits will be open Thursday and Friday. There is no charge to visit the exhibit floor but you must be registered.

One Day Registration		
Wednesday — Advance	\$ 25	\$ _____
At the door	35	_____
Thursday — Advance	50	_____
At the door	60	_____
Friday — Advance	50	_____
At the door	60	_____

The following events are not included in the registration fee. Tickets are required.

MSA Business Meeting	No Charge	_____
Dow Alumni Breakfast	No Charge	_____
Host Chapter Party	\$ 25	_____
President's Reception and Design Awards	\$ 50	_____
Spouse Brunch	\$ 10	_____
Total	\$	_____

Note: Tickets to all events will be held at the Registration Desk at Fairlane Manor.

MAIL THIS FORM & PAYMENT TO: Convention '87, Michigan Society of Architects, 553 East Jefferson Avenue, Detroit, MI 48226.

Name _____

Spouse Name (if attending) _____

Firm Name _____

Address _____

City _____ State _____ Zip _____

Telephone _____ Chapter _____

Check # _____ In the amount of _____

VISA () MASTERCARD () Account No. _____ Expires _____

Signature _____

Please check: AIA Member () Prof. Affil. () Associate ()

WAL Member () Exhibitor () Student ()

Other _____

NO CANCELLATIONS OR REFUNDS AFTER TUESDAY, OCTOBER 13, 1987

Michigan Society of Architects 1987 Convention Committee

CHAIR Dennis M. King, AIA	PROGRAMS COMMITTEE (Cont.) Robert Pearce
MSA PRESIDENT Norman Hamann, AIA	Karen Russo, ASID Liaison
DETROIT CHAPTER PRESIDENT John Castellana, AIA	PUBLIC RELATIONS COMMITTEE Debra Lewis, CHAIR
EXECUTIVE DIRECTOR — MSA/DC AIA Rae Dumke	Larry Burns
EXHIBITS COMMITTEE James Graham, AIA, CHAIR	Arthur Smith, AIA
Steven Farkas, AIA	Angela Kimble, SMPS Liaison
Denis Moncion, AIA	William Groh, AIA
Bonlap Chan, AIA	Janet Burke, AIA
Bob Gazall, AIA	GRAPHICS COMMITTEE Gloria Harcourt, CHAIR
Robert Tremonti, AIA	HOST COMMITTEE Carl Roehling, AIA CHAIR
Richard Mysiliwicz, AIA	Tim Casai, AIA
Marc Therrien, AIA	Paul Stachowiak, AIA
PROGRAMS COMMITTEE Gary Skog, AIA, CHAIR	Kirk Delzer, AIA
Anthony Foust, AIA	ASSOCIATE REPRESENTATIVE Kathy Buck, Assoc.
Donald Root, AIA	RECOGNITIONS COMMITTEE Kenneth Neumann, FAIA, CHAIR
Donna Benian, Assoc.	

HYATT REGENCY DEARBORN

18600 Michigan Ave., Dearborn, MI 48126-9987

For reservations call toll-free (800) 228-9000 or dial direct (313) 593-1234.

Room Rates: \$94.00, Single or Double.

Reservations must be made by September 30, 1987

MasterCard, Visa, American Express, Diners Club, Carte Blanche accepted.



Beaubien House
553 East Jefferson
Detroit, MI 48226

BULK RATE
U.S. POSTAGE
PAID
DETROIT, MI
PERMIT NO. 2048

ADDRESS CORRECTION REQUESTED

TIME VALUE

CALENDAR

SEPTEMBER

- 11 **Western Michigan Chapter/**
AIA fees for Awards
Program due.
- 11 "Partying In the Park" to
benefit the Detroit Artists
Market, 5:30 to 10 p.m. in
Harmonie Park, cost \$30 at
the door. Exhibit and food.
- 15 ESD Construction Lunch-
eon Series "Asbestosis".
Asbestos abatement con-
tractor, attorney specializ-
ing in environmental liabil-
ity cases and engineer who
has worked on several
asbestos projects will dis-
cuss this plaquing problem
at lunch at the ESD. Call
313-832-5400. The cost is
\$22.
- 15 **WAL Membership Tea**
- 16 "Frank Lloyd Wright In
Michigan: A Cross Section"
Oak Park Public Library in
Chicago, 7:30 p.m. A. Dale
Northrup, Art Professor at
the Center for Creative
Studies will kick off a series
on Wright. He is working on
a book on Wright's work in
Michigan.
- 17 **Mid-Michigan Chapter/**
AIA Meeting, Noon.
- 18 **Western Michigan Chap-
ter/AIA Annual Evening**

Home Tour in St. Joseph
features a house designed
by Allegretti Architects that
can be picked up and moved
if Lake Michigan continues
to erode the shore. Call Dick
Rhymer at 616-926-7281
for details

- 18 **Detroit Chapter/AIA**
Allied Arts Festival, Art &
Architecture Awards,
Cesar Pelli and Cranbrook.
- 25 **MSA Executive Committee**
Meeting
- 25 **Upper Peninsula Chapter/**
AIA Marquette
- 25 **Western Michigan Chapter/**
AIA deadline for Awards
Program.
- 25-27 113th Annual Meeting of
the Historical Society of
Michigan, Grand Hotel,
Mackinac Island. For infor-
mation, contact the Society
at 313-769-1828.
- 30 CSI Product Fair — '87,
Southfield Pavilion, Details
and booth reservation, call
Helen Valade at 313-754-
2004.

OCTOBER

- 1-3 42nd Annual Education
Conference of the Michigan
Society of Planning Offi-
cials, "Farms, Factories and
Freeways: Managing

Change in Rural and Urban
Communities." Amway
Grand Plaza, Grand Rapids.
Contact: MSPO at 313-651-
3339.

Cover Photo:

*Indoor Tennis Facility Michigan State
University East Lansing, Michigan*

*R.D. Anselmo & Associates Architects/
Interior Designers*

MSA BULLETIN

VOL. 10 ISSUE 8

EXEC. DIRECTOR Rae Dumke
EDITOR Lynne Merrill-Francis
ADM. ASST. Cathy Brooks
STAFF Celeste Van de Vyver
Noelle Fagerlund

PUBLICATIONS COMMITTEE:

..... Tim Casai, AIA
The MSA Bulletin is published 10 times
per year by the Michigan Society of
Architects and is distributed free of
charge to all members and their firms.
The Michigan Society of Architects
accepts classified advertising from
MSA members and firms free of charge
up to 6 lines. Advertising over this
figure costs \$2.00 per line. Circulation
2,000. Address: Beaubien House, 553
East Jefferson, Detroit, MI 48226;
313/965-4100.