

M S A



MONTHLY  
BULLETIN

100 YEARS

■ ■ ■ ■ ■ ■ ■ ■ ■  
MARCH 87



## Evie Asken, FAIA

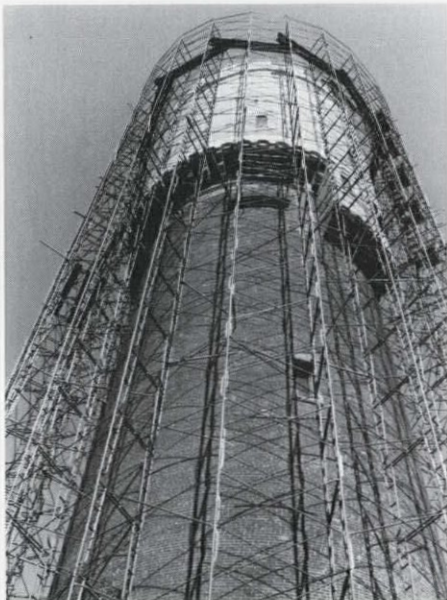


Evie Asken, FAIA

You know . . . it had to have been simpler than . . . just look at the "old" photos published weekly in nearly every newspaper in Michigan . . . life as it used to be.

However, read what it used to be. A special experience for me was ". . . and, Ladies of the Club". After finally conquering how to hold the book, I lived the eighty year friendship of Ann Morgan and Sally Rauch that spanned 1847-1927 . . . life as it used to be. Helen Hoover Santmyer goes into great detail of day to day

Water Tower, Kalamazoo State Hospital (1885)



living . . . attitudes, dress, politics, morals, business, economics, homes, building, holidays, food, medicine, schools . . . how did people deal with change that impacted their life style? (All of the things that Mitchner skips in his sagas across time . . . ALL of the things we architects "dig for" with every one of our clients.) You know what? . . . those folks looked at every change as positive progress . . . FORWARD.

Now in vogue . . . even though Nelson Nave told a K-College class that this too will pass . . . is **renovation, retrofit, restore, re-use** (as in "adaptive"— . . . return to that dream place in history. But, where do we return to? (They've made movies of this dilemma.)

In our research, we have found that with every change of ownership, a building was modernized to meet the "in look". The layers of changes that "today's" thinking is trying to remove has a purpose for their place in time . . . Architects can have fervor for the past but we had better concentrate on our vision of the future.

The Western Michigan Chapter area 150 years ago . . . rural, farming, trapping, low profits.

The WMC area 100 years ago . . . rural, farming, developing urban areas, Upjohn, Kellogg, transportation changes, profits.

The WMC area 50 years ago . . . rural, farming, orchards, resorts, urban centers, Upjohn, Kellogg, Whirlpool, depression, automobile, phone, war (?)

The WMC area today . . . rural "blight", "big business", farming, urban "blight", economic development, TIF, developers, shopping centers, condominiums, senior centers, resorts, marinas, Kellogg, Upjohn, Whirlpool, GM, Eaton, Palisades Park, profit, infra-structure "renewal", water . . . . . band-aid it and move on.

The WMC architects have at various times in the past fifteen years, thrown themselves into the path of the "great steamroller of time" . . . in an effort to provide rationale where the need surfaced . . . sometimes together, sometimes alone, sometimes as part of the job, most times JUST BECAUSE . . . and here's some examples.

**1972 The Chapter Sued Them:** When small businesses began to develop along Stadium Drive, Kalamazoo, the Chapter took a strong stand to insure a green space and landscaping to each new development to the zoning regs. One business "slipped", the Chapter took issue and won the case. Thanks Bob Tower . . . Chapter President.

**1975 Save the Tower:** The Water

Kalamazoo Public Library, Kalamazoo





Tower at the Kalamazoo State Hospital was marked for razing . . . an area landmark. A citizen's committee under the leadership of several local architects raised the funds required to restore the tower. Thanks Rogers Associate.

**1981 Arcadia Creek Concept Sold** At our own MSA Convention, the WMC sponsored the first of many charrettes that introduced the Arcadia Creek Concept to the City of Kalamazoo . . . a natural means to revitalize the center city. The idea was accepted, the plan is developing and we continue to cheer every step towards its reality. Thanks Kingscott Associates.

**1983 Celebration Exhibit** In celebration of the 125th anniversary of the Chapter, the WMC prepared a photographic exhibit of Architecture in Southwest Michigan that toured various communities in the Chapter area. Thanks Ed Hammarskjold, Nelson Nave and Norm Hamann.

**1983 South Haven's New Look** The city took a gamble that worked . . . recognizing a need for an economic stimulus, the City supported the development of the channel for a marina. They commissioned O'Boyle, Cowell & Blalock, L.A./Planners to design a street plan that encouraged a general facelift by all shop owners. It worked . . . just try to find a parking space in July. Thanks Bob, Bob &

Kathy.

**1984 Northside Community Design Charrette** Several teams of "locals" developed concepts and solutions for the northside neighborhood of Kalamazoo. The committee combined the various plans and have used it for funding requests. Not a quick fix . . . but the press has created an awareness in the city. Thanks to the six teams.

**1984 Benton Harbor Charrette** 16 Members spent a week-end in Benton Harbor to synergize their efforts towards an economically sensible solution for a "rebirth" of the City. Chris Brooks and a team of Benton Harbor citizens presented the solution to the City Commission . . . the efforts spawned an interest. Presently Michigan State University Sociology Department is studying the issue with our plan as part of the base. Thanks Chris, Ann, Ed and members.

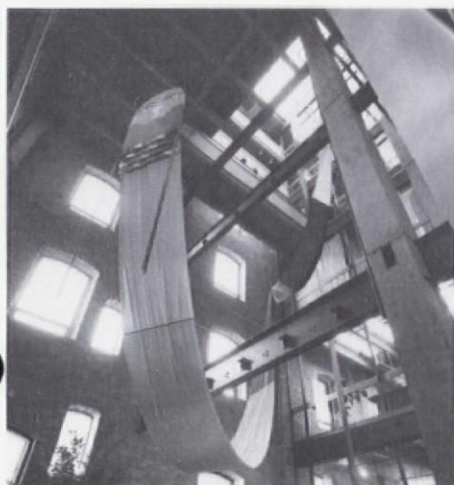
**1985 You Can Fight City Hall** This was certainly controversial and there was a lot of dissention in the City . . . we were all on a "side" but were not always ready to speak up . . . but some did and were successful in stalemating a \$27M plan to consolidate some railroad tracks in the Kalamazoo business district. The objection centered upon the destruction of some fine historic buildings to clear the way for industrial development and the construction of a 40 foot high

overpass. "Sight-blight" was the buzz word; ineffective use of tax dollars, the "straw" and "there are better plans", the driving force that put the issue to bed. Thanks Nelson Nave and Ed Hammarskjold.

**1987 Festival Plaza/Kellogg Headquarters** Battle Creek's effort to revive its Central Business District became reality when Kellogg decided to build its corporate headquarters in the City Center. With the remodeling of the Stouffer Hotel and the development of McCamly Place, Battle Creek has a new look, new direction and new future. Chapter affiliates, O'Boyle, Cowell & Blalock were part of the design team.

How many times have you questioned yourself . . . "is it really worth it?". The slash marks grow in number EACH day. BECAUSE we architects have fervor for the past, BECAUSE we deal with future realities, BECAUSE although to some we may seem negative . . . we truly are positive. The very nature of our work makes us so. We can take the punches . . . and no matter **what**, we can make "it" work and make "it" work beautifully. As we sit here trying to comprehend 100 years, we can't help saying, "Damn it, when they cut back to this place in time, I hope they'll find a lot more than plywood glazing, heavy metal and weird hairdos.

The Haymarket. Kalamazoo



Festival Plaza, Battle Creek





## MSA President's Report



Norman Hamann, AIA

On several occasions while attending the 1987 AIA Grassroots, I heard complaints by component officers concerning the relationship of the local chapters to the state organization. The problems between the groups seemed to magnify when the state organization was in the same city as the strongest local chapter. After listening to these unhappy and

frustrated people, I became very aware of the unique relationship that exists between the MSA and the nine Chapters of the Michigan Region; and especially the cooperation that exists between the MSA and the Detroit Chapter.

Although there is not always agreement between the Society and the Chapters, positive dialogue has developed that results in cooperation and achievement. The members of the Michigan Region now work not only for their local chapters, but for the good of the entire state within the organization. This special relationship has become stronger in recent years, and I hope it will continue to develop in the future.

A great portion of the credit for this success should be given to our Executive Director, Rae Dumke, and to the Past Presidents Evie Asken, Mike Callahan, Roger Margerum, Dick Slocum, Bob Greager and Jim Shane. A large amount of their efforts was to reach out to the Chapters of the Region and develop an organization of cooperation and direction.

The nine Chapters not only provide monthly member activities; public awareness events; continuing education programs; and several, their own newsletter publications; but provide the leaders who serve within the MSA as directors and officers.

In turn, the MSA is involved in state government affairs; provides AIA documents and publications for sale; collects and distributes member dues; plans and orchestrates an annual convention, a mid-summer conference, a health facilities seminar, and a board and officer retreat; publishes a handbook and a newsletter; and is involved in many continuing education and professional development seminars.

Together, the Chapters and the Society will continue to develop new valuable services and events. Already under study this year is a plan for implementation of the Intern Development Program (IDP) within the firms of the Region. A mini-grassroots will be held for Chapter Presidents and Vice-Presidents this June, and long range plans include the publications of a Michigan architecture magazine.

The Chapters and the Society are successful because of member participation and cooperation. Get involved and enjoy the satisfaction of being active in a successful organization!

## Solution To Litigation Maze

A landmark of cooperative effort was achieved when the "100 Day Document" — a proposed contract for the settlement of construction disputes by mandatory discussion, mediation and arbitration, was produced. It is the direct outgrowth of more than two years of excruciating negotiations in an attempt to come to grips with the litigation crazed mess in which the construction industry is

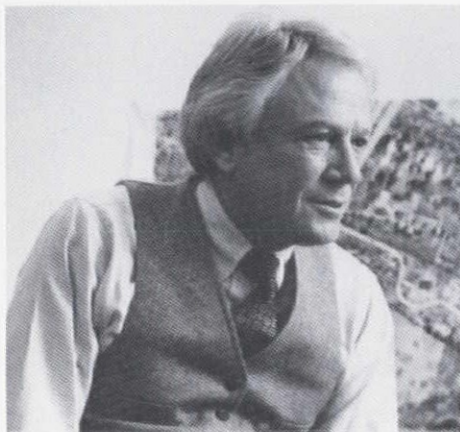
involved, according to the Deep Foundation Construction Industry Roundtable who presided over its birth.

A number of engineering and construction associations have already recognized the contract including the American Society of Civil Engineers and it is under review by many more, including AIA.

The contract will be presented by Joseph Ward, the president elect for the National Academy of Forensic Engineers at a luncheon meeting at the Engineering Society of Detroit on April 9, 1987. Copies will be available at the meeting. Contact Bailie Imber P.E. at 313-355-4600 for reservations or further information.



## Gold Medal



Carl Luckenbach, FAIA

Carl Luckenbach, FAIA, won the coveted Gold Medal of the Detroit Chapter of the American Institute of Architects for a body of work that includes the Pontiac Silverdome, the Walter Reuther Library of Labor and Urban Affairs at Wayne State University and the Mathilda Wilson Aviary at the Detroit Zoo. Since his career began in the early 1960's, he has designed buildings all over Michigan, a good number of them on college campuses. He received his Fellowship for this work in 1977.

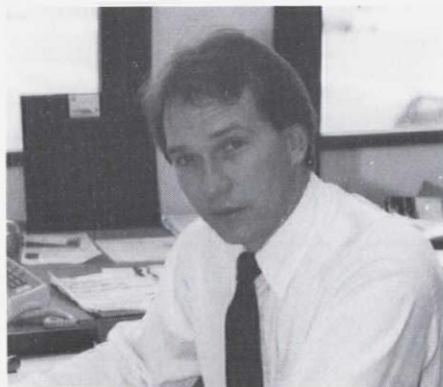
In 1965 he received his first design award from the AIA, and since then he has put together an impressive list of honors. He has a national award from the Society of Professional Engineers and two Progressive Architect awards. His work has been published in *Architectural Record*, *Progressive Architecture*, *Newsweek* and *Fortune Magazine*. He is a partner in the architectural firm, Luckenbach/Ziegler & Partners, Inc.

Luckenbach grew up in Detroit and went to Cranbrook School before taking his bachelor's degree from the University of Michigan and his masters from the Harvard School of Design. He has been a trustee of the Michigan Foundation for the Arts for the past eleven years, an eight year member of the Birmingham Housing Board and was a founder of the Birmingham-Bloomfield Civic Design Committee. This work was the basis for a City of Birmingham Public

Service Commendation.

He has been a visiting critic and lecturer at the University of Detroit, the University of Michigan, Lawrence Institute of Technology and the Boston Architectural Foundation for the Arts.

## Young Architect of the Year



Carl Roehling, AIA

Two years ago, the Detroit Chapter/American Institute of Architects began a new program to honor young professionals, the Young Architect of the Year Award. The 1986 award went to Carl Roehling, AIA who is director of design for Hoyem-Basso & Associates.

Roehling won his first design award at 18 and last year, as senior designer at Harley Ellington Pierce Yee, he won a Michigan Society of Architects Design Honor Award for First Center in Southfield. While at the University of Michigan he won the Architecture Faculty Cup Award and was an Albert Kahn Graduate Fellow.

He is active in both community and AIA affairs. He was a member of the Royal Oak Historical Society Board and the Historic District Commission and served on the Birmingham Art in the Park Committee. Last year, he chaired the Mid-Summer Conference and is on the committee again this

year for the gathering that will be held on August 6-8 on Mackinac Island. He is MSA treasurer and also serves on the Detroit Chapter/AIA Board of Directors. Ken Neumann, FAIA, who made the presentation noted that he is always willing to help a good cause if it benefits his craft or his community.

## Firm News

Giffels Associates, Inc. has sponsored a scholarship program for much of its 60 year history. Since 1979 when the formal program began, the firm has contributed \$1,000 each to U of M, LIT, Wayne State, MSU, Michigan Tech, U of D and Western. This year's scholarship recipients are Tod Stevens, James Schaefer, Phillip Johnson, James Lynch, Deborah Yee, James Zeeb and John Schroeder.

The Construction Association of Michigan recently elected three new members to its board of directors; Robert Chaldecott, James Boettcher and John Schuler. Established in 1885, it is the oldest and largest regional construction association in North America.

The Consulting Engineers Council of Michigan has a new president, Robert Stellwagen, P.E. CEC/M is an association of 95 consulting engineers, architect-engineering and land surveying companies. Other officers serving with him are Ralph Steele, Frederick Timmer, Robert Wade, Philip Hampton. Serving on the board of directors are Charles Davis, Charles Carr, George Ehlert and Kenneth Kramer. This executive director and secretary is Stephen Wagner.

TMP Associates, Inc. has recently promoted Stanley Beebe to Senior Associate, Thomas Kowalski, AIA to Associate and Gail Dare to Associate and Director of Marketing.

Beebe has been with the firm as chief of field services for 27 years and he had directed the construction of virtually all of TMP's projects.

Kowalski joined the firm in 1973,

(Continued on page 8)



# CALENDAR

## Events

February 23 - March 27

The ANR Building at One Woodward Avenue in Detroit will be the site of a Retrospective of world-renowned architect Minoru Yamasaki's greatest works and a 25th anniversary photo exhibit of the ANR Building.

April 9 - 11

The Wright People, second annual conference on Frank Lloyd Wright at the U of M. The cost is \$70. Contact: 313-764-5304.

April 23 - 25

Greater Detroit Chapter of National Association of Women in Construction five state regional forum, Hyatt Regency, Dearborn.

May 10-16

National Historic Preservation Week

June 3

State Board of Registration for Architects Public Hearing Regarding Intern Requirement. 611 W. Ottawa, Lansing 10:00 a.m.

June 19 - 22

AIA National Convention, Orlando, FL

June 26 - 28

31st Annual CSI Convention and Exhibition Cobo Hall, Detroit.

---

**MARCH 87**

---

MONDAY

TUESDAY

WEDNESDAY

THURSDAY

FRIDAY

SATURDAY



10 Grand Valley Chapter/AIA Awards '87, Grand Rapids Art Museum.

11 Detroit Chapter/AIA Rendering Seminar, Harvey Ferraro.

12 - 13 Health Facilities Planning Seminar, Grand Rapids.

16 W.A.L. Tour CBS Fox Studio.

18 MSA Convention Comm, Detroit 8:00.

12 LIT ARCHITECTURE.

19 SMPS "A Behind the Scenes Look" Dennis King, AIA 8:30 to 2:00 p.m. AGC Building. Contact: Donna Metzger, 354-0300.

19 MSA Board Meeting, Lansing.

23 Western Michigan Chapter/AIA, Legislative Breakfast. Contact: Evie Asken, FAIA 616-381-4880.

24 Detroit Chapter Board Meeting SH&G.

25 Mid-Summer Conference Committee 8:00 a.m. SH&G.

26 Detroit Chapter/AIA, 100th Anniversary Lecture Series John Haro, FAIA, U of M Hospital.

27 AELC Meeting, Howell 10:00 a.m. Past Presidents, Howell 12 Noon.

## APRIL 87

1 Bd. of Reg. for Architects.

Vice Pres. Meeting, April 1st.

3 - 5 W.A.L. Trip to Cincinnati.

9 Lit ARCHITECTURE.

14 Grand Valley Chapter/AIA Urban Design Primetime Grand Rapids Art Museum.

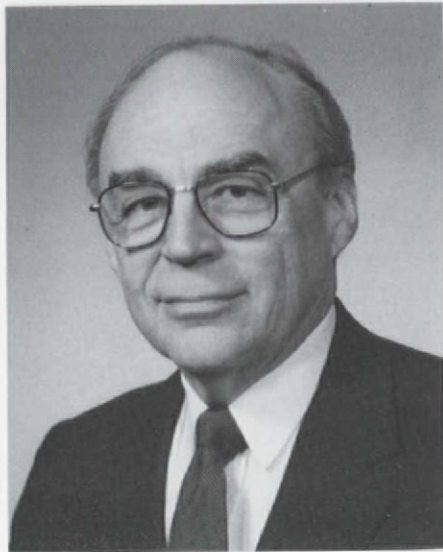
14 CSI Chapter Meeting. Tour of the Free Press Plant. Contact: 962-3090.

21 W.A.L. History & Design of Herb Gardens.

21 IDP Preliminary Sketches, U of M. Call: 313-764-1300



## Detroit Chapter/AIA Launches 100th Anniversary Lecture Series



John Haro, FAIA

The Detroit Chapter of the American Institute of Architects, in celebration of its Centennial Anniversary, has put together a lecture series that will highlight the accomplishments of some of the area's most prominent architectural firms. The lectures all take place in buildings that were designed by the featured firm.

John Castellana, AIA, the new president of the Chapter, noted that the Detroit Metropolitan Area has a long history of architectural excellence and many of its architects have International reputations.

Gino Rossetti, FAIA, made the first

presentation in February at the Federal Mogul World Headquarters in Southfield. John Haro, FAIA of Albert Kahn Associates at the new University of Michigan Hospital in Ann Arbor is lined up for **March 26th**. Haro, a Detroit Chapter Gold Medalist, has over 31 years of experience in architectural planning and design. He is responsible for all architectural programming, master planning, design and interiors for Albert Kahn.

The **April 23rd** presentation will also be in Ann Arbor and will feature William Kessler, FAIA of William Kessler & Associates at his Industrial Technology Institute there. The series swings back to Southfield in May when Ralph Youngren, FAIA of Smith Hinchmen & Grylls Associates will present the Maccabees Mutual interiors that have already received two design awards. Carl Luckenbach/Robert Ziegleman are on tap for June but the location has not been selected.

The Anniversary Series will take the summer off but will begin again in November at Domino Farms where Gunnar Birkerts, FAIA will discuss his much publicized project for Thomas Monaghan.

Each event will cost \$5 for members and \$7.50 for all others. A reception/tour will begin at 6 p.m. and the lecture will follow at 7 p.m. Contact the Detroit Chapter/AIA at 313-965-4100 for more information.

## Firm News (Continued)

left in 1977, and rejoined in 1985 as a project manager. He is a U of M graduate.

Dare comes to TMP from Albert Kahn Associates where she had been the marketing operations coordinator.

**William Kessler and Associates** is pleased to announce that its chief executive officer, William Kessler, FAIA has been named the 1987 Thomas Monaghan Visiting Professor at the University of Michigan College of Architecture. He will be teaching a design studio for fifth year students.

The firm received the International Color Design Prize in 1981 for the Stuttgart Design Center in West Germany. This year Kessler will be on the jury.

The firm has also advanced Roger Snyder, AIA and Robin Doyle to Associates. Snyder is the project architect for the Third Judicial Circuit Courts project. Doyle is the business manager.

Adrienne Malley has been named as director of marketing. She holds a masters degree in urban planning from U of M and was the editor of *Project Reports*, a marketing magazine for design firms.

**Robert W. Giesey, Architect, P.C.** has relocated to 1111 Creekwood Trail, Burton, MI 48509. Telephone 742-0480.



46408 Grand River Ave.  
Novi, MI 48050  
(313) 349-3744

6400 Jackson Ave.  
Ann Arbor, MI 48103  
(313) 995-3777

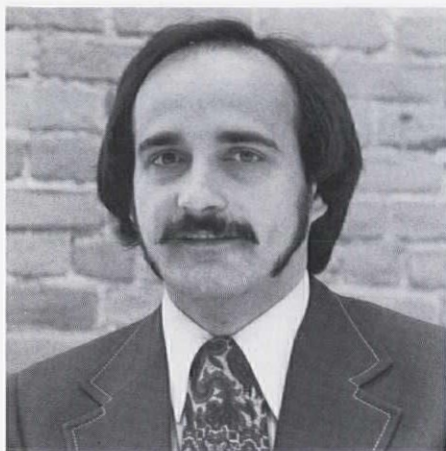
## ENGINEERING SERVICES

- Subsurface and Geotechnical Investigation
- Construction Materials Testing and Inspection
- Foundation Engineering
- Design of Earth Retaining and Groundwater Control Systems
- Paving and Roofing Consultation
- Hydrogeologic and Geologic Studies
- Environmental Investigation and Monitoring
- Asbestos Abatement Programs

**MICHIGAN'S LARGEST FLEET OF DRILLING EQUIPMENT**



## DeLisle & Berry — Honorary Members



Richard DeLisle

Specification writer, Richard DeLisle, of Grosse Pointe and John Berry, a graphics designer who works for Herman Miller are now Honorary Members of the Detroit Chapter of the American Institute of Architects. DeLisle and Berry, along with such people as Jerome Cavanaugh, Henry Ford II and Henry Scripps Booth,

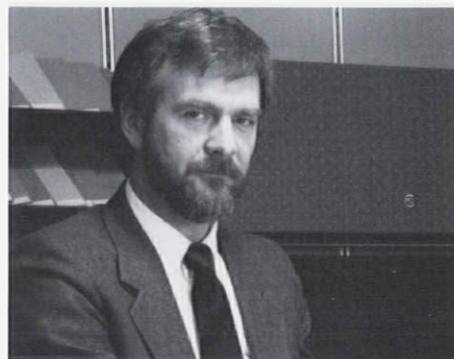
have been singled out by the Chapter because they have made a special contribution to architecture and to the advancement of the profession.

Ken Neumann, FAIA, spoke for the Honor Awards Committee at the presentation at the Detroit Institute of Arts and presented each of them an engraved plaque.

DeLisle had spent 14 years in various architectural firms, including 5 years as Director of Construction Administration at William Kessler and Associates, before opening his own specialized construction specification firm. He has taught construction administration and computer application courses at the University of Wisconsin and is a member of the Construction Specification Institute. He and his wife, Stacy, own and operate "Over-the-Rainbow", an ice cream parlor and restaurant in Grosse Pointe.

Berry is a Cranbrook educated designer who was for many years the director of the interiors and environmental design division at Smith Hinch-

man & Grylls. In 1980 he started a new life as corporate director of communications for Herman Miller. It is interesting to note that he joins the DePrees as the third honorary member at Herman Miller, a manufacturer of office furniture with an international reputation that is based in Zeeland, Michigan. He is a participant in a National Endowment for the Arts Study to improve the quality of design in American corporations.



John Berry

## A Revolutionary New Approach to Architectural CAD

The Computervision Personal Architect system takes an entirely new approach to architectural design—a 3-D modeling approach.

**ARCHITECTURAL DESIGN IN 3-D** Visualize designs in 3-D right at the outset of a project. You input a schematic floor plan and the system generates a three-dimensional model with volume. View the model as a wire-frame representation, a perspective with hidden lines removed, or a shaded picture.

**COMPLETE CONSTRUCTION INFORMATION** Combining the architectural design with construction information produces a complete building data base. The system produces plans, sections, elevations, perspectives, area takeoffs and other descriptive materials automatically. Changes to the building data base are reflected in all drawings automatically.

**FAST ARCHITECTURAL DRAFTING** An array of fast drafting tools supports the production of finished contract and construction documents. Output drawings on many popular pen plotters.

**ACCURATE PROJECT MANAGEMENT** Software is available for project management, scheduling, and general accounting.

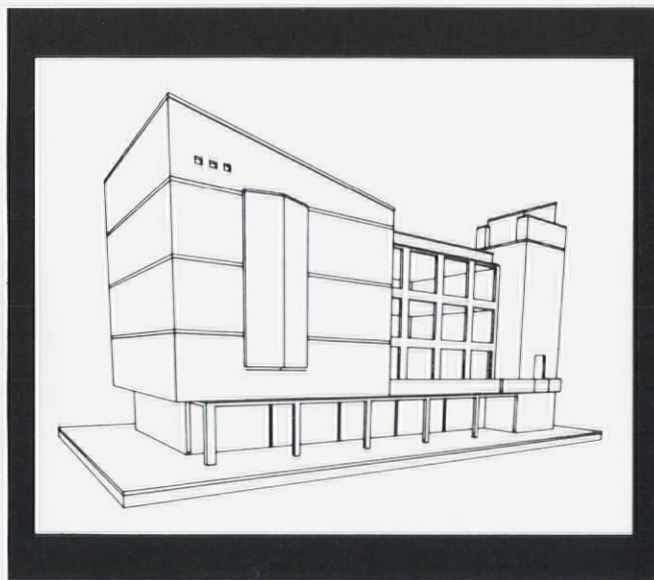
**COMPLETE AUTOMATION OF YOUR OFFICE PRACTICE ON A PC** The Personal Architect system is based on popular personal computer technology. So in addition to architectural design and drafting you can use your system for accounts payable, budgeting, word processing, spreadsheet analysis and much more.



**O'CONNOR CONSULTING INC.**  
AUTOMATION INTEGRATORS

30100 Telegraph Road Suite 478 Birmingham, Michigan 48010 313 644 8870

Take advantage of this powerful new tool for architecture. Come to us, your local Computervision Personal Systems dealer, for sales, training, and technical assistance.



**COMPUTERVISION**

*Personal Architect*



## Public Hearing Set For Intern Rule

The Michigan Board of Architects is considering whether or not an internship should be a requirement for becoming licensed in Michigan.

The Licensing Board will hold a public hearing on June 3, 1987 to gather comments on a proposed rule that would initially permit an internship to be used as one of the methods by which candidates for licensure get their qualifying experience.

Eventually, an internship could be the only method of qualification, but the board has not decided on that step. The rules show a proposed date of 1990, but that date is purely for discussion purposes, according to Evie Asken, FAIA, board chair.

At the present time, the AIA-NCARB internship would be accepted, but other internship programs which might be developed could also qualify as acceptable architectural experience after board review.

The current requirements for licensing include a professional degree and sufficient experience for the combination to total 8 years, successful passing of an examination, and 5 references who can attest to the quality of the applicant's professional work. If the internship requirement were accepted, it would substitute for both the practical experience and the references, since the internship certificate cannot be obtained without broad experience and considerable close supervision by several architects.

The hearing will take place Wednesday, June 3, in Lansing. The board meets at 611 West Ottawa Street, two blocks west of the Capitol. The meeting begins at 10 a.m. in Conference Room 1 on the Upper Parking Level.

The board's decision to proceed with the internship rule will depend on the comments received at this hearing, Asken said.

Copies of the proposed change to the experience rule presently in effect may be obtained by writing to the Michigan Board of Architects, Department of Licensing & Regulation, P.O. Box 30018, Lansing, MI 48909.

## IDP . . . Preliminary Sketches

On March 21st, the Continuing Education Program of the University of Michigan's College of Architecture and Urban Planning Alumni Society will discuss the purpose and dynamics of the Intern/Architect Development Program in Michigan. The seminar planners have assembled a group of practicing professionals and IDP experts in an open forum to discuss how the program might affect both the participating firms and the interns.

The program will begin at 10 a.m. and run until 3:30 p.m. in the Art and Architecture Building at the University of Michigan. The registration fee is \$50 and will include all seminar materials, refreshments and lunch from Zingerman's Delicatessen. To register, call the College at 313-764-1300.

## Grapevine

Balthazar Korab has a new book, *Michigan*, coming out in June. Look for another autograph party . . . Benjamin Thompson & Associates of Cambridge, MA wins the AIA Firm Award for 1987 . . . Tomblinson, Harburn Associates gets the good deed award in Flint for arranging a "come one, come all" day with free admission and parking at the Crossroads Village on June 19. Remember *The Buildings of Michigan* to be published by Oxford Press under the auspices of the Bureau of History? Richard Albyn, AIA won't forget. He wrote eight of the manuscripts and contributed over 266 hours of his time to the cause . . . Did you notice the new look of the *Monthly Bulletin*? Since we had so many nice compliments, good conscience forces a confession. Carl Roehling, AIA is not called Carol. Bob Fearon, AIA did retire from AT&T but he is back in the area and still very much interested in things architectural. One of William Kessler & Associates pictures is called "The Courtyard of the Counties" but not the one we labeled. Tim Casai's graphics for the Cal-

endar didn't come out as planned. It is a bit better this month. If only all the organizations in Michigan would agree not to plan an event on the same day . . . We have two new architect babies to report. Barbara and John Castellana have added baby Catherine and baby Brian is at home with his proud parents, Janet and Rachad Shishakly . . . New York Architect, J. Max Bond, Jr. wins the AIA's Whitney Young Citation for 1987 and Joseph Monticciolo, FAIA gets the Edward Kemper Award . . . The Detroit Chapter/AIA contributed \$100 to WAL's Marie Noth Memorial Fund and hopes others also remember her many years devotion to the Cause AIA . . . Economist Walter Heller will address the 1987 AIA Convention, June 19-22 in Orlando . . . Michigan had a big turn out at the AIA Grass Roots meeting in Washington. Norm & Bertie Hamann, Tom & Mary Lucas, Bob & Ruth Greager, Arnie and Deena Mikon, Ric & Fe Anselmo, Russ & Ruth Hinkle, John & Anne Jensen, Don Root, Ron Campbell, Steve Fry, Wayne Norlin, Bob Hill, Eugene Hopkins, Rae Dumke and Cathy Brooks were all there.

## Want Ads

**POSITION** available for design oriented registered architect with administrative ability, with the opportunity to share in ownership of the firm. Send resume to Gerald G. Diehl, Diehl & Diehl Architects, Inc., 28 West Adams, Detroit, MI 48226.

**ARCHITECT:** Do you still think of architecture as design theory, social responsibility and construction technology? If so, we're interested in you joining our team. Attractive Surroundings/Great Benefits/Open Salary. For an interview and/or more information call Jeffrey Parker Architects, Grand Rapids at 616-698-7459.

(Continued on page 12)



# Obituary

**DONALD RICHARDS, AIA** died November 22, 1986 at the age of 57. He was a project manager at Albert Kahn Associates, Inc. and lived in St. Clair Beach, Ontario.

He was a graduate of Michigan State University where he earned an economics degree and of the University of Illinois where he studied architecture. His building designs included hospitals, banks, churches and factories located in the Mid-west and Eastern seaboard states, as well as Asia and Western Europe.

He was a pilot and one of his projects was a mobile launching pad for the National Aeronautics and Space Agency at Cape Kennedy.

Before joining Albert Kahn in 1982, he was vice president and project executive of Austin Engineers and a project designer and assistant

department head at Giffels Associates.

During the Korean War he served in the U.S. Army as first lieutenant and tank commander. At home he was a member of the St. Clair Beach Building Committee and the Optimist Club.

He is survived by his wife, Nancy; his mother, Julia Richards; a brother and three sisters.

**MARIE NOTH**, a dear friend and the guiding light for Woman's Architectural League, died on January 26, 1987. She was preceded in death by her husband, Edwin, who died in 1974. Mr. Noth designed St. Johns Hospital in Detroit and many other hospitals, churches and schools.

In 1940 she took a job as art con-

sultant for a special exhibit of 20th Century paintings at J.L. Hudson Company that led to a career in interior decorating. For many years she was an International Hostess for the General Federation of Women's Clubs and she met and entertained dignitaries from all over the world.

As a memorial to Marie Noth, the Women's Architectural League plans to support an idea of hers that she began but was unable to complete, a scholarship fund for a Philippine student to attend a university in the Philippines.

Those who would like to contribute to the completion of her unselfish thought can mail their contributions to Linda Tuomaala, 425 Lexington, Royal Oak, MI 48073.

## Architectural Registration Exam Seminars 1987 Detroit Chapter A.I.A.

A.R.E. PANEL DISCUSSION  
Information on Architects Registration Exam (A.R.E.), A.R.E. Seminars, 1987, and Intern Development Program (I.D.P.), Wednesday, Feb. 25, 1987 at 6:30 p.m. University of Detroit Architecture Bldg. (FREE)

The following is the schedule for the 1987 A.R.E. Seminar Series:

SEMINAR	SESSIONS:	Construction Documents (1)	Assoc. Fee	Non-Assoc. Fee
1.	Wed 4/01	Mechanical/Electrical (G)	\$10	\$15
2.	Sat 4/11	Materials and Methods/Life Safety (H,G)	\$15	\$22
3.	Wed 4/22	Pre-Design (A)	\$15	\$22
4.	Wed 4/29	General Structures (D)	\$15	\$22
5.	Sat 5/09	Structures - Longspan (E)	\$15	\$22
6.	Wed 5/13	Structures - Lateral Forces (E)	\$15	\$22
7.	Sat 5/16	Approaches to Passing the Exam	\$15	\$22
8.	Wed 5/20	Building Design Graphics/Presentation (C)	\$15	\$22
9.	Sat 5/23	Site Design (B)	\$15	\$22
10.	Wed 5/27	Site Design Mock Exam/Critique (B)	No Fee	No Fee
11.	Sat 5/30	Site Design Mock Exam (C)	No Fee	No Fee
12.	Wed 6/03	Building Design Mock Exam (C)	\$100	\$195
13.	Sat 6/06	Building Design Mock Exam (C)		
14.	Sat 6/06	Exam Critique (C)		
15.	Sat 6/06	Exam Critique (C)		

### ENTIRE SEMINAR PACKAGE

6/15 - 6/18 "That ain't work, that's the way you do it..."

**A.R.E. EXAM**  
TIME: Wed. Seminars 6:30 P.M. - 9:30 P.M.  
Sat. Seminars 8:30 A.M. - 5:30 P.M.  
LOCATIONS: Building Design Mock Exam (A14): All Other Seminars: University of Detroit Life Science Building (Seminars #10,12,14,15-Arch. Bldg.) School of Architecture Building 4001 W. Michigan Ann Arbor, Michigan

### PAYMENT:

Check or Money Order Only payable to Detroit Chapter A.I.A.  
Special Note: For non-A.I.A. members: you may become Associate A.I.A. Members and take advantage of the lower Associate rates by following these steps:

1. Include complete application for Associate Membership.
2. Enclose fee for A.I.A. national dues check payable to "A.I.A." for \$35.
3. Enclose fee for state and local dues check payable to "Detroit Chapter A.I.A." for \$40.
4. Enclose fee for seminars check payable to "Detroit Chapter A.I.A." for \$40.

### REGISTRATION:

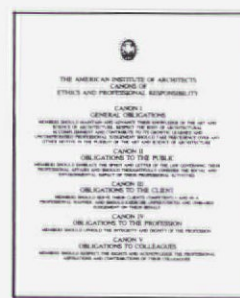
Payment must be post-marked by March 17, 1987. There will be a 100% seminar PENALTY FEE imposed for payment POST-MARKED after March 17, 1987.

NO REFUNDS

THE AMERICAN INSTITUTE OF ARCHITECTS

## Canons of Ethics Certificate

LIMITED EDITION



Beautifully reproduced  
on cast-coated cover stock  
16" x 20"

Suitable for framing and office display  
\$14.95 plus \$3 shipping  
Order #R597

Send payment to:  
AIA Fulfillment Service  
9 Jay Gould Court, P.O. Box 740  
Waldorf, MD 20601



For information  
call 313-965-4100





Beaubien House  
553 East Jefferson  
Detroit, MI 48226

BULK RATE  
U.S. POSTAGE  
**PAID**  
DETROIT, MI  
PERMIT NO. 2048

ADDRESS CORRECTION REQUESTED

## Want Ads *(Continued)*

**PRINCIPAL LANDSCAPE ARCHITECT** wanted by the Commonwealth of Massachusetts. Send 2 copies of resume with cover letter to Position Vacancy Announcement N87-03, Director of Employment, Human Resources Division, Metropolitan District Commission, 20 Somerset Street, Room 211, Boston, MA 02108.

### MSA BULLETIN

VOL. 10 ISSUE 2

EXEC. DIR . . . . . Rae Dumke  
EDITOR . . . . . Lynne Merrill-Francis  
ADM. ASST . . . . . Cathy Brooks  
STAFF . . . . . Celeste Van de Vyver  
Barbara Vasquez

#### PUBLICATIONS COMMITTEE:

. . . . . Tim Casai, AIA  
The MSA Bulletin is published 10 times per year by the Michigan Society of Architects and is distributed free of charge to all members and their firms. The Michigan Society of Architects accepts classified advertising from MSA members and firms free of charge up to 6 lines. Advertising over this figure costs \$2.00 per line. Circulation 2,000. Address: Beaubien House, 553 East Jefferson, Detroit, MI 48226; 313/965/4100.

#### Cover Photo:

#### **WILLIAM R. BIGGS/GILMORE ADVERTISING AGENCY**

New Office Addition  
Historic Renovation  
(with a 1990 flair!)

Kingscott Associates, Inc.  
Evie Asken, FAIA, project  
design.

Completed in 1986 as a phase 4  
project.

Photograph: David Kamm  
Kalamazoo, MI

This project was a WMC award  
winner