

monthly

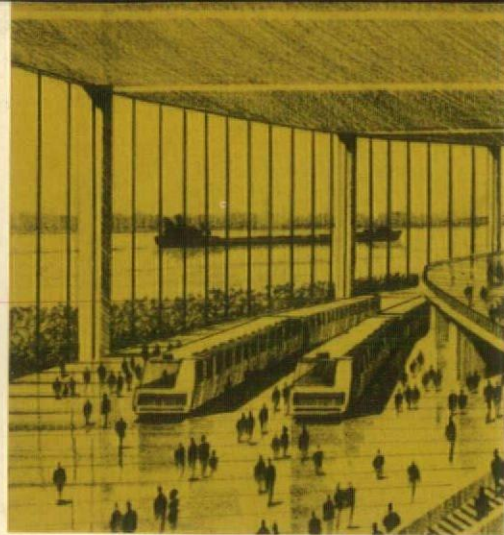
BULLETIN

AMERICAN INSTITUTE
OF
ARCHITECTS

OCT 26 1970

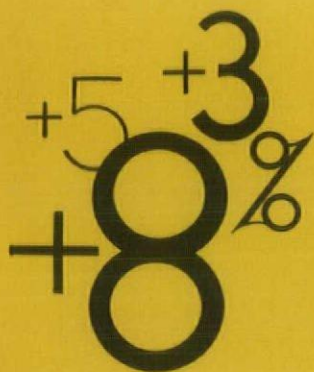
LIBRARY

michigan society of architects october 1970 50c



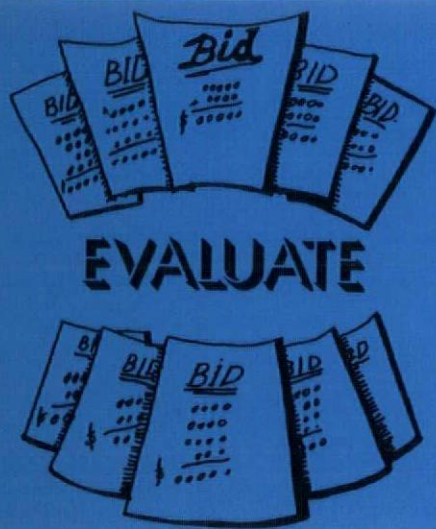
INTEGRATED AIRHANDLING SYSTEM.

All modern structures require an environment appropriate to their usage which includes various combinations of heating, cooling, humidification, air cleaning, and odor and fume removal, for both the comfort and health of the occupants and the community. An integrated and coordinated air system is a must in creating this environment and your Mechanical Airhandling Contractor is the group most experienced, educated and capable in producing and installing this system.



LESS COST

Experience has shown that usually competition makes the summation of separate bids for the various mechanical segments *less* than that of the combined bids.



BID EVALUATION

Airhandling systems, basically, are the lowest-cost systems to provide all the functions of which they are capable.

By accepting separate airhandling bids, you gain a more accurate method of evaluating true costs of these and other segments of the mechanical systems.

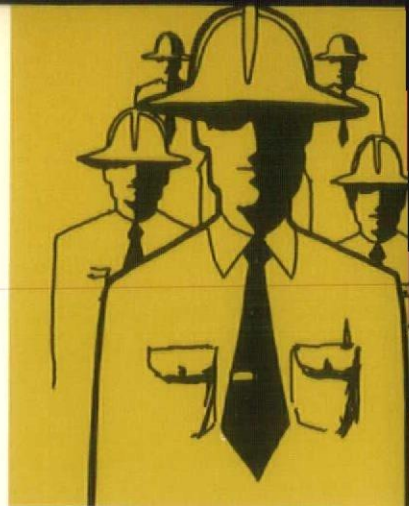


BID PEDDLING—BID SHOPPING

The owner receives a true and competitive price, unaffected by third party manipulations.

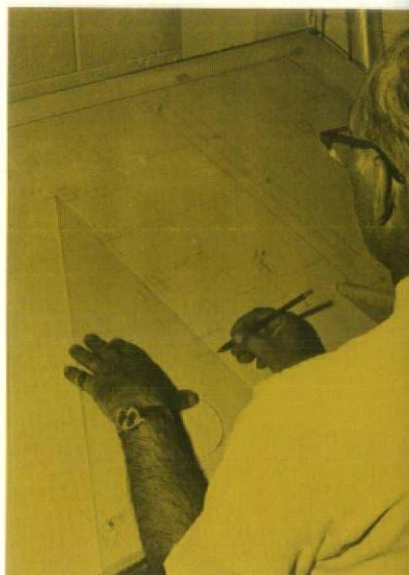
FINANCIAL INVESTMENT

The airhandling contractor is a fabricator as well as an installer and has a large and permanent investment in shop and facilities. These manufacturing facilities make possible the fabrication of a customized system and not merely an assembly of commercially available products.



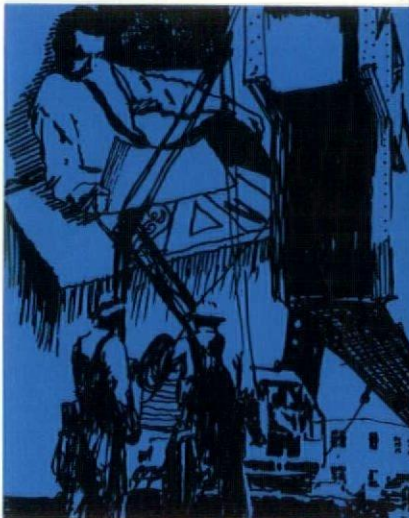
CONTRACTOR SELECTIVITY—PRE-QUALIFICATION

Separate bids afford the owner the opportunity to qualify his airhandling contractor on the basis of experience, organization, facilities and financial responsibility.



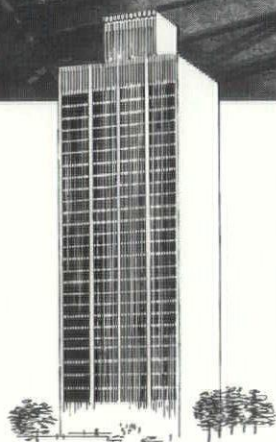
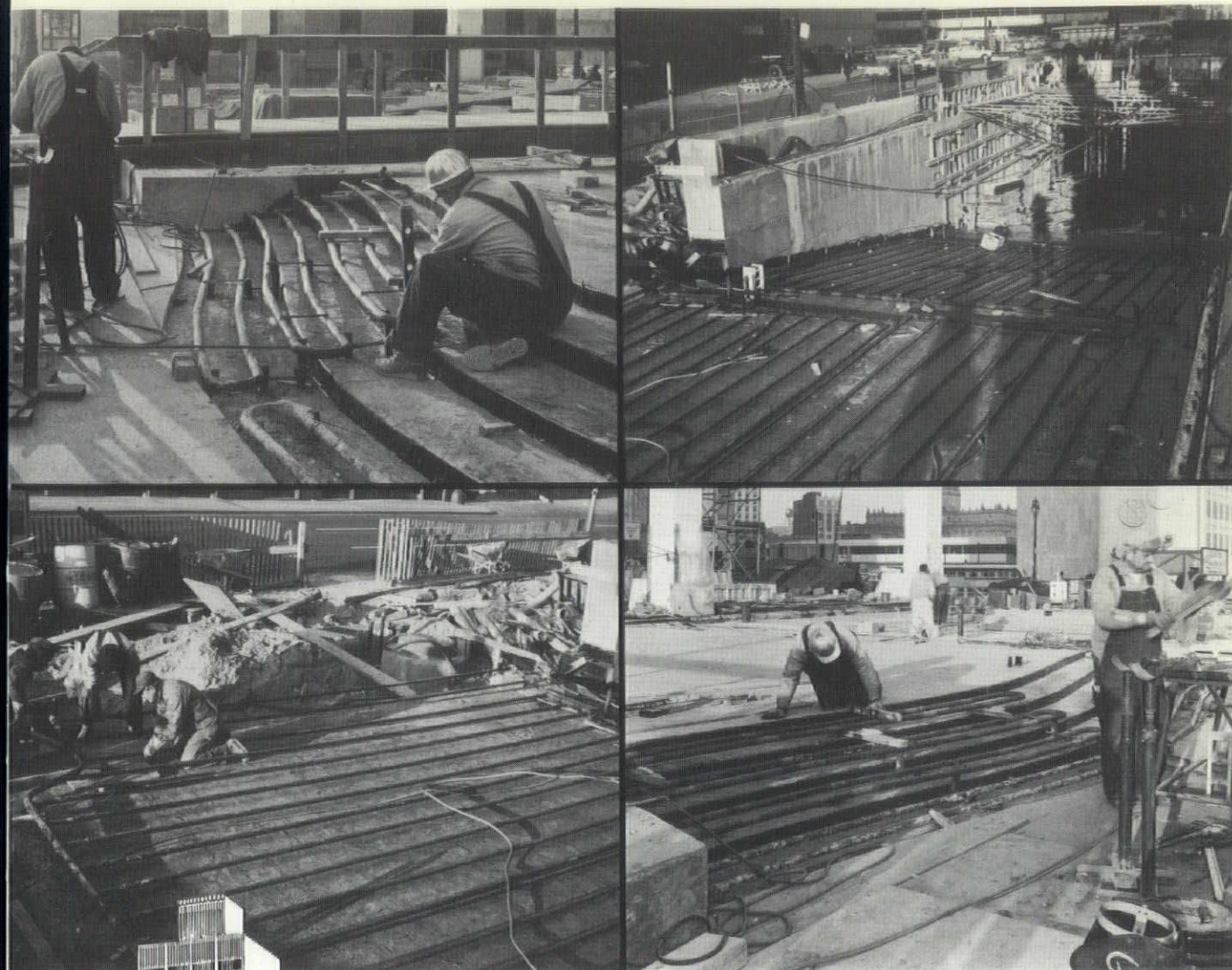
COORDINATION—SHOP DRAWING

The Airhandling Contractor produces the shop drawings for coordination of the other mechanical and electrical trades, thus making his critical in the execution of the project.



PHASE CONSTRUCTION

Comparatively new process whereby job construction allowed to continue before entire project plans drawing board. Eliminates time and money. Separate bids make possible the letting of a phase of construction without waiting for design completion of other phases of construction.



Sample our work...

Step on it each time you pass by the Michigan Consolidated Gas Company Office Building. It's the snow melting system built into the surrounding sidewalk and service drives.

Glanz & Killian—Detroit's fastest growing mechanical contractor—not only built in the efficient snow melting system, we also installed the plumbing, heating, air conditioning and fire protection systems.

It all adds up to a demonstrated ability of our all-around construction skill and experience available when you build your next building.

GLANZ
and
KILLIAN

COMPLETE MECHANICAL CONSTRUCTION

18655 W. Eight Mile Road • Detroit, Michigan 48219 • Telephone 255-2400



Isn't it fortunate
that an industrial fuel as versatile,
economical, clean-burning and widely used
as natural Gas is also a solution
to the pollution problem?

Michigan Consolidated Gas Company ♦

New Concept Uses Reliable Asphalt



ARCHITECT: Howard E. DeWolf, East Lansing

A new concept in "gas stations" was unveiled in East Lansing at the corner of Abbott Road and M-78. The service area is covered to protect it from inclement weather and the design and landscaping are such that it blends into the area, unlike most stations. Spartan Asphalt put in a 5½" hot mix base and a 1½" wearing course for this unique University Standard Service Center. You, too, can be assured of quality work when you call in a prequalified MAPA contractor.



MICHIGAN ASPHALT PAVING ASSOCIATION, INC.

909 Prudden Building

Lansing, Michigan 48933

Phone 482-0111

MEMBERSHIP ROSTER

A & A ASPHALT PAVING CO., Birmingham
ANN ARBOR CONSTRUCTION CO., Ann Arbor
ASPHALT PRODUCTS CORP., Detroit (Affiliate)
BYLING-CUNNINGHAM ASPHALT PAVING CO.,
Tecumseh
BLUE WATER ASPHALT CO., INC., Port Huron
ADILLAC ASPHALT PAVING CO., Southfield
CENTRAL PAVING COMPANY, West Branch
COOKE CONTRACTING CO., THE, Detroit
DETROIT ASPHALT PAVING CO., Detroit
DETROIT CONCRETE PRODUCTS CORP., Novi
FLINT ASPHALT & PAVING CO., Flint
FOX VALLEY CONSTRUCTION CO., Appleton, Wisc.

GLOBE CONSTRUCTION CO., Kalamazoo
GRAND RAPIDS ASPHALT PAVING CO., Gd. Rapids
THE HICKS COMPANY, Alma
HODGKISS & DOUMA, Petoskey
HOWELL CONSTRUCTION COMPANY, INC.,
Indian River
LAMAR ASPHALT & PAVING CO., Ludington
MATHY CONSTRUCTION CO., LaCrosse, Wisc.
MICHIGAN COLPROVIA CO., Grand Rapids
MIDLAND CONTRACTING CO., Midland
MOLESWORTH CONTRACTING CO., Yale
PAUL C. MILLER CO., Sparta

PAYNE & DOLAN OF WISCONSIN, INC.,
Milwaukee, Wisc.
PEAKE ASPHALT PAVING CO., INC., Utica
PENINSULA ASPHALT CORPORATION, Traverse City
RIETH-RILEY CONSTRUCTION CO., INC., Battle Creek
SAGINAW ASPHALT PAVING CO., Saginaw
SPARTAN ASPHALT PAVING CO., Holt
FRANK STRAUSBERG & SON, Saginaw
THOMPSON-McCULLY CO., Belleville
WARD & VAN NUCK, INC., Mount Clemens
WASHTENAW ASPHALT CO., Ann Arbor
WEST SHORE CONSTRUCTION CO., Zeeland
WORKMAN-RICHARDSON ASPHALT CO., Jackson
JOHN G. YERINGTON CO., Benton Harbor

ASSOCIATE MEMBERS

ALLIED MATERIALS CORPORATION, Detroit
AMERICAN AGGREGATES CORPORATION, Detroit
AMERICAN OIL COMPANY, Chicago
ATLANTIC RICHFIELD COMPANY, Chicago
BITUMINOUS MATERIALS, INC., Jackson
CHEVRON ASPHALT CO., Cincinnati
CHICAGO TESTING LABORATORY, INC., Chicago
CLARK EQUIP. CO., CONST. EQUIP. DIV.,
Benton Harbor

E. J. COOPER EQUIPMENT, INC., Southfield
DETROIT EDISON COMPANY, THE, Detroit
E.K.S. EQUIPMENT COMPANY, Grand Rapids
R. E. GLANCY, INC., Tawas City
GREAT LAKES PETROLEUM CO., East Lansing
GUSTAFSON OIL COMPANY, Green Bay, Wisc.
INDUSTRIAL FUEL & ASPHALT CORP., Grand Rapids
JENNITE PRODUCTS, INC., Detroit
KAFKA ASPHALT & PETROLEUM CO., Iron Mountain
LEONARD REFINERIES, INC., Alma

EDW. C. LEVY CO., Detroit
MANEGOLD-COLWELL CO., INC., Belleville
MICHIGAN ASH SALES CO., Essexville
MICHIGAN TESTING ENGINEERS, INC., Detroit
PAMS PRODUCTS CORPORATION, Detroit
W. E. PHILLIPS EQUIPMENT, INC., Southfield
SENECA PETROLEUM CO., INC., Chicago
STRAITS AGGREGATE & EQUIPMENT CORP., Tawas City
TELFORD & DOOLEN, INC., Lansing

MAPA

CONTENTS

VOL. 45 NO. 10

- 6 Editorial
- 9 News
- 11 MSA Firm Roster
- 20 Michigan State Board
- 21 Albert Kahn
- 23 Michigan Builds
- 28 Calendar

Copyright © 1970 MSA
All rights reserved

THE MONTHLY BULLETIN
IS PUBLISHED FOR THE MICHIGAN
SOCIETY OF ARCHITECTS TO
ADVANCE THE PROFESSION OF
ARCHITECTURE IN THE STATE OF
MICHIGAN.

MSA OFFICERS

PRESIDENT

William Lyman, AIA

VICE PRESIDENT

Almon Durkee, AIA

SECRETARY

Charles Scurlock, AIA

TREASURER

Dale Suomela, AIA

DIRECTORS

Bernard DeVries, FAIA
Howard Hakken, AIA
Jackson B. Hallett, AIA
William Jarratt, AIA
Norman Kline, AIA
Glen Paulsen, FAIA
Warren Poole, AIA
Robert Siefert, AIA
Leslie Tincknell, AIA
Robert Yokom, AIA

REGIONAL DIRECTOR

Walter Sanders, FAIA

MANAGING EDITOR

Ann Stacy

ADVERTISING DIRECTOR

Gary R. Grout

Monthly Bulletin, Michigan Society of Architects, the official publication of the Society; all Michigan Chapters of the American Institute of Architects; Women's Architectural League of Detroit (WALD); Producers Council, Inc., Michigan Chapter; Builders & Traders Exchange of Detroit, Grand Rapids and Lansing is published monthly by the Michigan Architectural Foundation; Editorial and Advertising Offices—28 West Adams, Detroit, Mi 48226, Phone 965-4100.

Monthly Bulletin, Michigan Society of Architects, is published monthly at 28 West Adams, Detroit, Mi 48226. Paid as second class matter January 15, 1946 at the Post Office at Detroit, Michigan under Act of March 3, 1879. Subscription price, \$4.00 per year (members \$2.00). 50 cents per copy.

EDITORIAL



Governor William G. Milliken

I am very pleased, through this editorial, to be able to address the members of the architectural profession in Michigan and also public officials who oversee the expenditure of public capital outlay funds for the expansion, replacement or improvement of publicly owned physical plants.

The expenditure of such funds, constituting one of the highest responsibilities of public service, is and always must be based on a deliberative process.

Added public capital outlay usually means added services. It also means increased annual operating costs while added capital outlay for private purposes can mean greater capacity and potentially more profit.

For this reason, public officials must always be assured of the need and the cost, both direct and indirect, before making commitments for added capital investments. The "why," "what" and the "how much" must be thoroughly known and weighed.

If expenditures of public funds for capital outlay are to be accomplished in the best interest of the taxpayer and citizens, it is both prudent and productive early in the deliberative process to enlist those professionals specifically qualified and recognized by training and law to counsel on and provide such services.

Michigan has an excellent resource of highly competent architects who can fill these needs, architects who practice individually or collectively.

I know that many of the firms, large and small, are nationally and internationally distinguished. They are the equal to any anywhere and the talent and success are surpassed by none.

State government, which makes good use of this resource early in the deliberating process, has never competed with that resource as is done in many of the bureaus of the

federal government and in some states. The enviable success of Michigan's building programs can largely be attributed to that policy.

Through the use of the private practitioner there exists an advantageous "built-in competition" for projects. Such competition results in better design, more efficient function, always with the newest, most up-to-date materials and systems, and therefore consistently lower cost than is obtained by others through different methods.

State government annually contracts with about 35 large and small firms for various services. Architects are paid a standard uniform fee rate for the services performed, a rate based on a logarithmic formula that varies inversely with the cost of construction of the project. The present formula has been in use since 1958 and the principle is now being widely used elsewhere. Considerations are being given now to adjust the formula so that it will more appropriately reflect project complexities as well as cost and so that it will be more consistent with the recommended minimum fee rates of the Michigan Society of Architects.

The physical plant in which the State of Michigan conducts certain of its educational, corrective, penal or public welfare and health services, is valued at more than 2½ billion dollars.

In addition, several millions of dollars are expended annually from the general fund for capital outlay. Millions more come from federal and private philanthropic grants and revenue derived from the sale of bonds. Expenditures from the general fund alone ranged from a high of about 80 million dollars for fiscal year 1968-69 to a low of about 40 million dollars for the current fiscal year.

Michigan's system of providing authorizations and appropriations for capital outlay is unique — and enviable too. Enviable, I believe, because it is accomplished in an orderly and professional manner consistent with the principles of good planning laid down by the architectural profession and with sound business principles which limit expenditures to a "pay as you go" schedule. These principles recognize revenue and other State needs.

Much of the success of the States' building program is due to the fact that both the Executive and Legislative branches of government seek continually to plan ahead through early study and projection of its needs. Because of this procedure, there are always more than 1,000 approved open work order accounts, meaning that state government is "studying" or "doing" continuously more than 1,000 work projects.

The total cost of all projects is estimated at ½ billion dollars. About 200 million dollars are in projects in the final planning and construction stage. No project reaches this stage unless the need, cost estimate, scope or intent have been thoroughly studied and analyzed by both the Executive and Legislative branches of government.

For most projects such analysis requires part or most of a fiscal year and funds are made available annually for these purposes. Therefore, before commitment for final planning and construction for any major project, both the Executive and Legislative branches have had the time and the opportunity to consider its needs and the short term as well as long term costs.

There are several reasons for Michigan's success in its capital outlay investments. One of these is because the State plans ahead and partially appropriates by project and schedules the necessary funds for a building program long before construction is authorized. Another is because we have a very competent Building Division in the Bureau of the Budget of the Executive Office staffed with knowledgeable, highly trained and experienced personnel in building design, construction and finance. They successfully administer and integrate the physical as well as the financial schedules to ensure success. That Division, which includes State government's chief architect, chief engineer, chief planner and State budget director for capital outlay, serves as the main professional advisor on capital outlay to the Executive and Legislative branches.

Michigan's building programs of the past have been well organized, planned and accomplished. I suggest, however, that both the government and the profession prepare themselves for an unprecedented avalanche of building construction.

The building industry is most sensitive, almost seismographically sensitive, to economic conditions. It is usually the first to fall and the last to rise, but it is vitally important. Inevitable peace and prosperity will bring with it the desire, the impetus and the dollars to fulfill the needs for a new and better environment worthy of our capacity and culture.

Architecture, which is and will be the primary profession involved with all of this, has become one of our most comprehensive and complex professions. It is a comprehensive profession because it creates for every stage of man's development and condition the physical environment of use, order and beauty through design, economics, technology and management.

Architecture is a complex profession because it requires a sensitivity to the wide range of human needs and aspirations and an imaginative response to the social and political evolution, the economic and organizational changes and to the technical development of materials and methods best suited for human use and purpose.

I am sure the future will, more than ever before, challenge the capabilities and competence of the architectural profession. I have long been more than casually interested in and intrigued with the profession of architecture and I have great confidence in it.

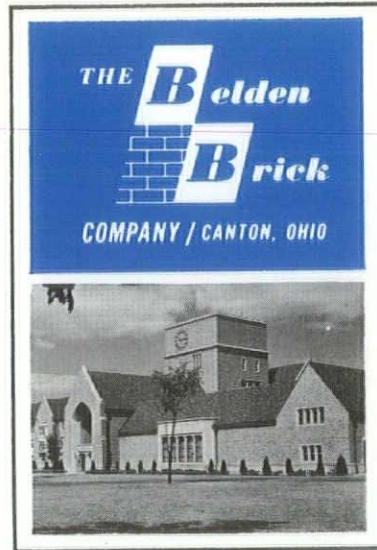
Because there is need for more architects with even more and better training than in the past, I recommended for the 1969-70 fiscal year that funds be released for preliminary plans for new facilities for the College of Architecture and Design at the University of Michigan.

Additional funds were appropriated for fiscal year 1970-71 for the complete planning of the project. The Legislature concurred in this recommendation. It is hoped that the current economic conditions will soon improve so that when those planning documents have been prepared, this much needed facility estimated to cost \$8.5 million can be under construction.

There is a vitally important job ahead for the profession of architecture. State government, I believe, is doing its share to prepare for it.

It's no secret that architectural creativity is most effectively interpreted when more distinctive textures of brick are available. That's why creative architects call on BELDEN . . . because BELDEN provides over 200 imaginative variations of brick. We call it selectability. You may prefer to call it creative enhancement. But whatever your needs, you'll find more color, texture and size selection from BELDEN, from sand mold colonial brick through earthy browns to mechanically perfect pearl grays.

Your nearest BELDEN Dealer will gladly show you the facts in the form of samples and our new 4 color brochure, or write us at P. O. Box 910, Canton, Ohio 44701.



belden is... texture

NEWS

Landscape Curricula Study Started

Professor Myles G. Boylan, director of Michigan State University's School of Urban Planning and Landscape Architecture, has been selected to lead a national study of curricula standards by the American Society of Landscape Architects.

As chairman of the society's Committee on Education Policies and Planning, Professor Boylan will examine the relationship of landscape architecture to present society and help determine how that relationship can best be reflected in educational programs.

The committee will primarily study the society's current accreditation policies to see if they meet today's specific problems and those of the future.

Professor Boylan recently served on the Department of Housing and Urban Development's Design Awards Jury in Washington, D.C. ♦

Elects Officers

At the conclusion of the current year's activities, five officers were elected to serve during the new business year of the Michigan Chapter of the Producer's Council, Inc.

Elected as President is Paul Boudreau of Executone-Detroit, Inc., formerly First Vice President, First Vice President, Frank Neal of Honeywell,

Inc., Second Vice President, Adam DeMartino of Michigan Consolidated Gas Co., Treasurer, Tom Brance of Armstrong Cork Co. and Secretary, Jim DeGroot of Jed Products Co.

The Producer's Council consists of representatives of Quality Building Products Manufacturers and is affiliated with the American Institute of Architects. The Council presents display meetings, seminars, traveling exhibits, and educational programs aimed at presenting new products and construction developments. ♦

10 September 1970

Dear Fellow Architect:

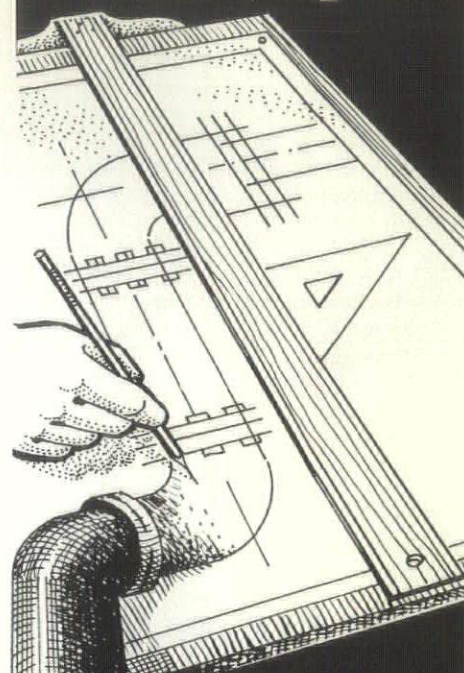
The Department of Defense (DOD) recently initiated, for test purposes, a new method of selecting architects and engineers. The new DOD selection process requires prequalified architects and engineers to submit priced technical design proposals prior to being selected for a particular job. A DOD press release explaining the scope and details of the procedure is attached.

Representatives of the AIA and several engineering societies have advised the Defense Department that it is not in the government's interest to select architects and engineers on the basis of priced technical design proposals. A press release stating the



(left to right) First Vice President, Frank Neal of Honeywell, Inc., President Paul Boudreau of Executone-Detroit, Secretary, Jim DeGroot of Jed Products Co., and Second Vice President, Adam DeMartino of Michigan Consolidated Gas Co. (Not pictured is Treasurer, Tom Branch of Armstrong Cork Co.).

Architects & Engineers



**Mechanical
Heat & Cold**

**...working
together
for 49 years!**

**MECHANICAL
CONTRACTORS**

*construction
operation &
maintenance*



MECHANICAL HEAT & COLD
12300 HAMILTON AVENUE
DETROIT, MICHIGAN 48203
PHONE: TOWnsend 8-9600

viewpoint of the professional societies is also attached.

The AIA believes that to require architects and engineers to submit proposed design solutions in order to be considered for Federal work is an unfair burden on the design professional. We contend that it is unreasonable to expect an architect or engineer to perform a substantial amount of his work without remuneration simply on the chance that he may get a job. We point out that a design concept is an integral part of the total building solution arrived at only after careful study, programming and analysis. To require sketches of proposed design solutions from architects and engineers before a detailed program is agreed upon by the client and the design professional is to ask for solutions based on insufficient information. To comply with such a procedure is unfair to the client and contrary to standards of practice which have been developed over many years to serve the best interests of the client and the public.

Furthermore, we are convinced that to require price competition for architectural and engineering services will invariably result in the cost of these services becoming the dominant factor in the selection process. Since lower prices come from lower levels of service, we believe the client, in this case the

Federal Government representing the public, will be the ultimate loser. We are also convinced that coupling the preparation of a technical proposal with an estimate of the cost of design services will result in an overall increase in the cost of professional services.

As a result of our careful study of this matter, we believe that members of The American Institute of Architects should seriously consider the damaging implications of participating in what we believe to be an ill-conceived new method of procuring professional design services.

Sincerely yours,
Rex Whitaker Allen

Ceramic Tile Contractors Form Panel

The Great Lakes Ceramic Tile Council has initiated a new service for architects and builders who are writing specifications which involve ceramic tile.

Telephone the Council office, (313) 353-5547, where the inquirer will be put in contact with a knowledgeable panel of ceramic tile contractors and industry representatives—able to answer any questions or furnish information on new products and installation techniques. ♦

M. Den Braven, Incorporated

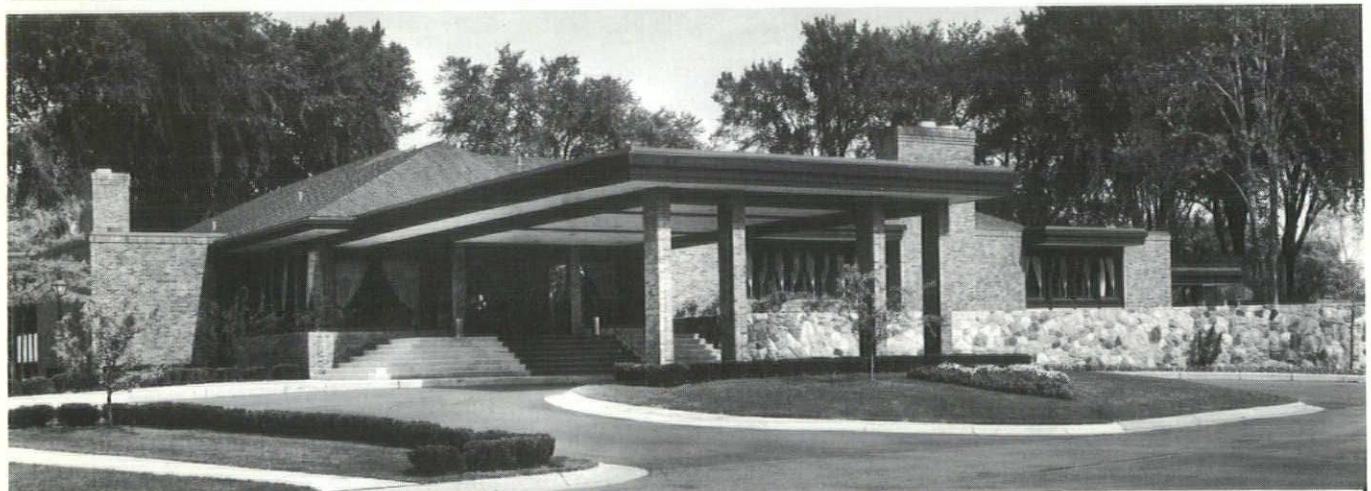
● Our 57th Anniversary ●

— SHEET METAL —

— VENTILATING —

AIR CONDITIONING

9080 Alpine Avenue
Detroit, Michigan 48204
933-7494-5-6



PICTURED: Lochmoor Club;
Daniell Associates
Architects Incorporated

Ceramic Tile Installed:
walls and floors of main
kitchen, all toilets and
shower rooms.

when an architect plans for the future ...

he selects building materials very carefully. A ceramic tile contractor will be pleased to explain how quality products and professional installation methods produce lasting effect.



GREAT LAKES CERAMIC TILE COUNCIL, Inc.

25100 Evergreen Road • Southfield, Michigan 48075

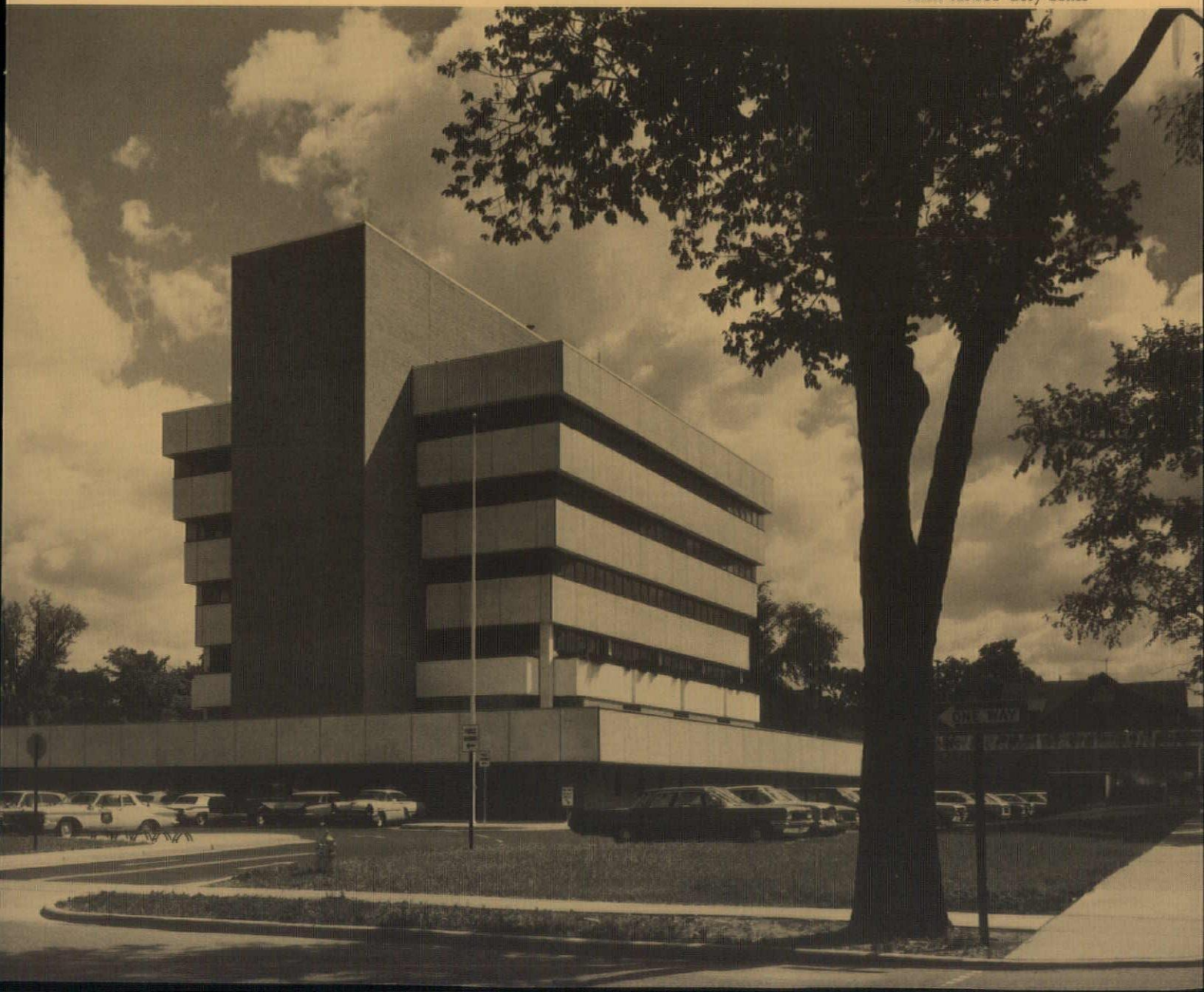
MSA FIRM MEMBERS

An investment toward better professional practice

The Board may elect to Firm Membership any organization (whether doing business as an individual, partnership, corporation or joint stock association) legally entitled to practice architecture in the State of Michigan, of which one or more principals shall be a Member of the Society, who by its application for such classification of membership and its payment of annual dues evidences its interest in and support of the principles, purposes and programs of the Society.

*. from the MSA By-Laws
adopted in April 1967*

Ann Arbor City Hall





ANN ARBOR (Area Code 313)

Colvin, Robinson, Wright & Assoc., 210 E. Huron, 48108	662-4501
Cummins & Barnard, Inc., Architects & Engineers, 2058 S. State St., 48104	662-5638
Daniels & Zermack Assoc., 2080 S. State St., 48104	761-2090
Hobbs and Black Associates, 202½ E. Huron St., 48108	662-4095
Johe, Herbert, 440 Barton North Dr., 48105	662-7955
KMM Assoc., Inc., 2311 Shelby, 48103	662-2525
Muschenheim, Hammarskjöld & Arms, Inc. 201 E. Liberty, 48108	761-5606
Osler, David W., 916 Fuller Rd., 48104	663-7480
Pettys, Linden C. Associates/Architects, 321 S. Main St., 48108	662-0936
Sanders, Walter B., 99 Barton North Drive, 48105	662-9202
Tanner & Kowalewski, AIA, Architects, 308-10 S. State St., 48108	663-1700
Van Curler, Donald E., 201 East Liberty, 48108	761-3466

BATTLE CREEK (Area Code 616)

Haughey, Black & Assoc., Inc., 616 Post Building, 49014	968-8179
Sarvis Associates, Inc., 258 Champion St., 49014 ..	962-6291

BAY CITY (Area Code 517)

Frantz, Peter B., AIA, Arch., 1001 Center Office Bldg., 48706	892-5694
Morris & Wesolek, Archts., 1211 South Euclid, 48707	686-0650

BIRMINGHAM (Area Code 313)

Birkerts, Gunnar & Assoc., 909 Haynes St., 48009	644-0604
Bissell, Edward E., 1045 Westchester Way, 48009	644-5093
Else, Peter, Architect, 280 Daines, 48009	646-0056
Evangelista, Joseph P., 199 West Brown, 48009 ..	647-3535
Jickling & Lyman, 1090 S. Adams, 48011	647-1777
Luckenbach/Durkee & Assoc., Inc., 954 North Hunter Blvd, 48011	647-5440
O'Dell, Hewlett & Luckenbach, Inc., 950 North Hunter Blvd., 48011	644-8508
Smith, Linn, Demiene, Adams, Inc., 894 S. Adams, 48011	646-3700
Stempien, Chester, Assoc., 32760 Norwood, 48009	642-3010
Wright, Clifford N. Assoc., Arch., 4066 W. Maple Rd., 48010	647-2022
Ziegelman & Ziegelman Associates, 877 South Adams, 48011	647-1640

BLOOMFIELD HILLS (Area Code 313)

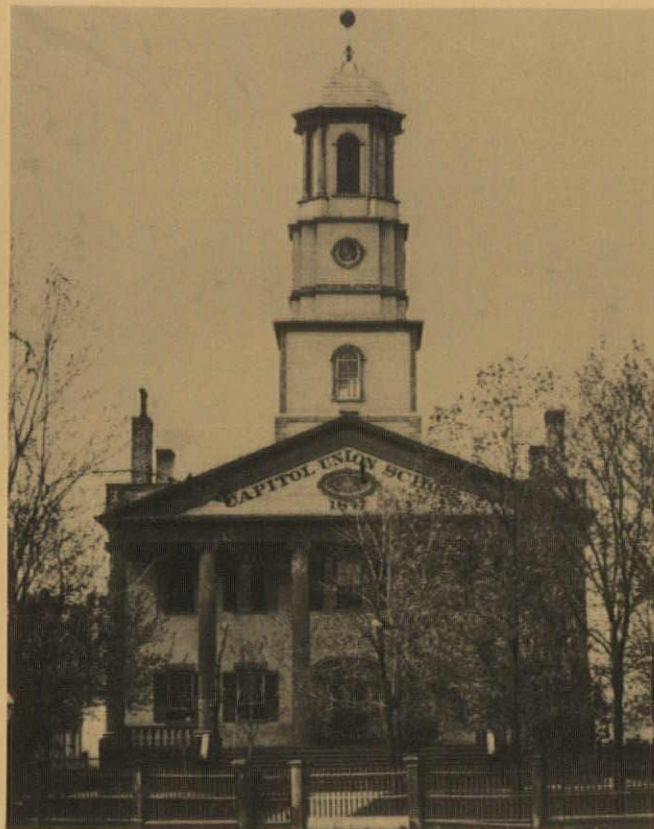
Begrow & Brown Architects, Inc., 1145 West Long Lake Rd., 48013	646-8877
Sherman, Charles W. & Associates, Inc., Architects, 860 W. Long Lake Rd., 48013	642-0980
Swanson Associates, Inc., 74 W. Long Lake Road, 48013	664-2440
Tarapata-MacMahon-Paulsen Associates, Inc. 1191 West Square Lake Rd., 48013	338-4561
Trout, Alexander L. (E), 2334 Lost Tree Way, 48013	334-4215

DEARBORN (Area Code 313)

Benjamin, Woodhouse & Guenther, Inc., 14430 Michigan Ave., 48126	582-4260
Jahr-Anderson Assoc., Inc., 15011 Michigan, 48126	846-8113
Kissinger, Holzhauer, Inc., 1310 North Telegraph, 48128	274-3200
Nordstrom-Samson & Assoc., 19855 W. Outer Dr., 48124	582-8864
Owens, S. L. (E), 22101 Tenny, 48124	561-3136
Shanayda, Michael, 17481 W. Outer Drive, 48127	565-5397



State Capitol Building 1899



Capitol Union School

DETROIT (Area Code 313)

Agree, Charles N., Inc.,	
14330 W. McNichols, 48235	341-8434
Bauer, Leo M., Assoc. (E),	
2560 Woodward Ave., 48201	961-1874
Brown, H. Sanborn, 5220 E. Davison, 48212	892-2588
Calder, Ralph & Assoc., Inc.,	
1600 Mutual Bldg., 28 W. Adams, 48226	963-6333
Crane, Kiehler & Kellogg,	
110 Madison Ave., 48226	962-2750
D'Alessandro & Kloian, 9014 Chalmers, 48213	839-2525
DeConti, Ferruccio P.,	
19371 James Couzens, 48235	342-3113
Diehl & Diehl, 120 Madison, 48226	965-1872
Ditchy, Clair Assoc., Inc.,	
19378 James Couzens, 48235	342-3400
Donaldson & Meier,	
645 West Seven Mile Rd., 48203	883-6440
Gabler, Cornelius L. T., AIA,	
3300 Book Bldg., Tower, 48226	963-8963
Giffels & Rossetti, Inc., Architects & Engineers,	
1000 Marquette Bldg., 48226	961-2084
Havis-Glovinsky Assoc., 14145 Puritan, 48227	273-8171
Johnson, Nathan & Associates, Inc.,	
2512 West Grand Blvd., 48202	898-7223
Kahn, Albert Associates, Inc.,	
345 New Center Bldg., 48202	871-8500
Kamp, Mayotte & Dicom, Inc.,	
18400 Grand River, 48223	838-9540
Klaetke & Marino, 608 Fine Arts Bldg., 48226 ..	963-2735
Levine-Alpern & Associates,	
16150 Meyers Rd., 48235	863-7686
Machida, Yosh & Associates,	
16954 Parkside St., 48221	861-6586
Morison, Shiels & Assoc., Inc.,	
13160 W. McNichols Rd., 48235	345-5050
Noetzel, Clarence,	
2407 National Bank Bldg., 48226	963-5333
Odell, William H. (E),	
2336 Commonwealth Bldg., 48226	962-2699
Redstone, Louis G., Associates, Inc., Architects,	
Planners, Engineers, 10811 Puritan, 48238	341-0710

Rogvoy, T., Assoc., Inc., 15600 Puritan, 48227 ..	838-3434
Rossetti/Associates, Inc.,	
1234 Penobscot Bldg., 48226	964-3240
Sewell & Schoettley, Arch., 220 Bagley Ave., 48226	961-1267
Siegal, Leonard G., Associates, Inc.,	
16825 Wyoming, 48221	342-3403
Sims, Howard & Associates,	
758 Detroit Trade Center, 1200 Sixth St., 48226	961-5360
Smith, Eberle M., Assoc., Inc.,	
950 W. Fort St., 48226	965-8180
Smith, Hinchman & Grylls Assoc., Inc.,	
3107 W. Grand Blvd., 48202	875-8100
Stevens, John Assoc., Inc.,	
6623 Gratiot Ave., 48207	923-0980
Vogel, Charles J. (E)	
1011 Park Ave. Bldg., 48226	961-8830

ESCANABA (Area Code 906)

Arntzen, G & Co., 820 S. 16th St., 49829	786-3301
--	----------

FARMINGTON (Area Code 313)

Merritt, Cole & McCallum, Architects,	
33750 Freedom Rd., 48024	476-3614

FERNDALE (Area Code 313)

Fusco, Jude T. Assoc., Inc.,	
1318 W. Nine Mile Rd., 48220	547-1228

FLINT (Area Code 313)

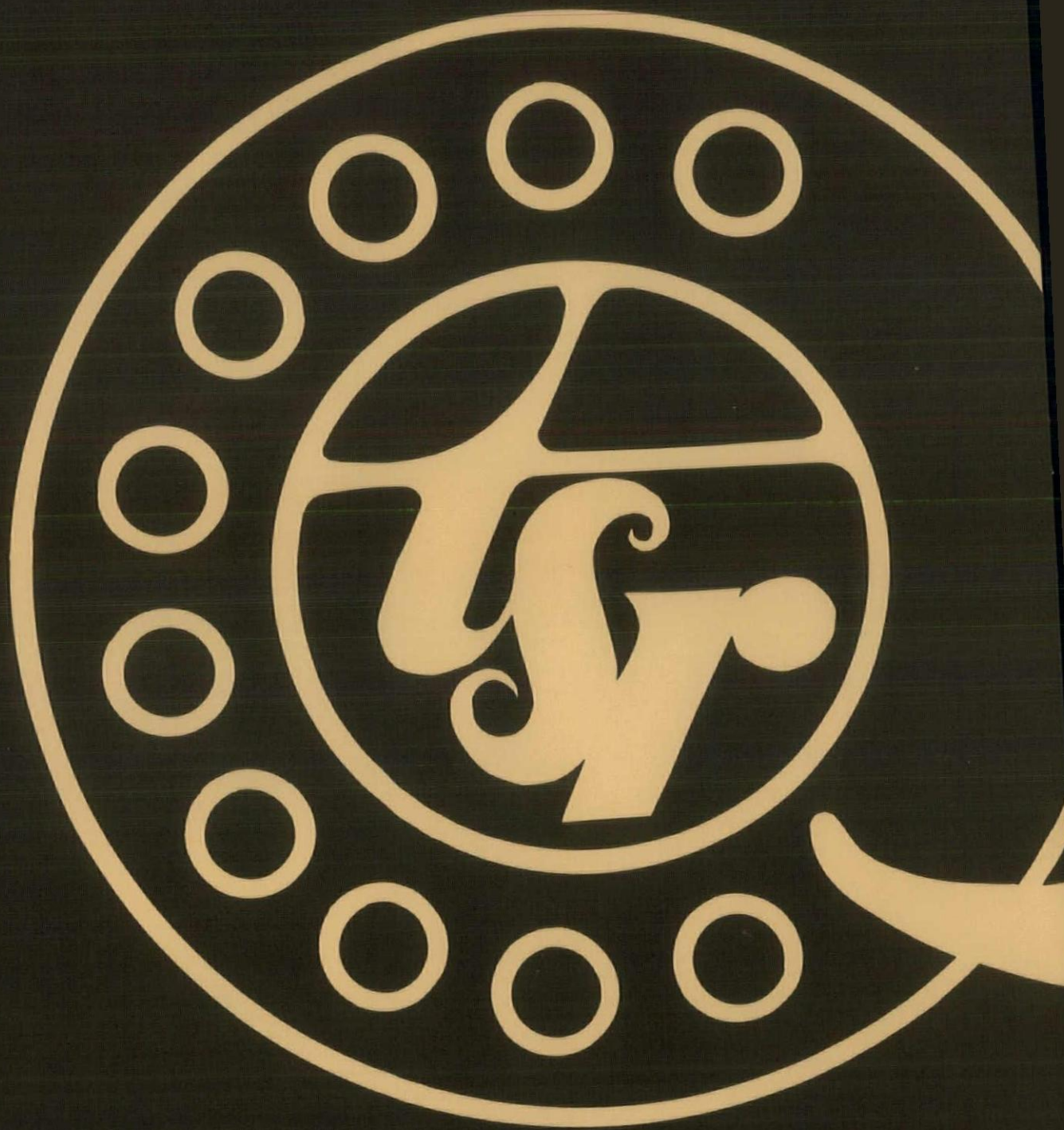
Allen, Donovan W & Assoc., Arch., Inc.,	
G-3426 Miller Rd., 48507	732-1340
Nurmi, Nelson, McKinley, Assoc., Inc.,	
415 Lewis St., 48503	234-3864
Sedgewick, Sellers & Assoc., Inc.,	
1168 Robert T. Longway Blvd., 48503	238-9089
Suomela, Dale A., Architect,	
3111 Corunna Rd., 48503	234-5014
Terrill, Gene Assoc., Arch.,	
625 S. Grand Traverse, 48503	235-1460
Tomblinson, Harburn & Associates, Arch., Inc.,	
705 Kelso, 48506	767-5600

FLUSHING (Area Code 313)

Roberts, Tommy Jr., Architect,	
2496 Rushbrook Dr., 48433	732-0840

Kalamazoo Chamber of Commerce





How many people will you have to communicate with?

A hatful of prime contractors working on the same mechanical system?

That means vastly expanded communications problems—a waste of your—and your owners—time and money.

The kind of money you don't have to spend when your mechanical systems contractor provides *Total Systems Responsibility*.

He excavates, plumbs, fire protects, and pipes water, steam and chemicals. He insulates, ducts and controls warm and cool air. And he balances hydronic and air systems to specs—the whole shmeer.

Today's integrated comfort systems logically call for *TSR*—the special capability offered by the Mechanical Systems Contractors of Detroit, who install systems, not parts.

And you need dial only one number, the Mechanical Systems Contractor's—to co-ordinate the entire job from bid to delivery. To eliminate costly coordination and communication snafus.



Plumbing & Heating Industry of Detroit

Representing the people who do pipe work and plumbing
14901 Meyers Road • 491-4700

Display Center hours are from 1 to 5, Monday through Friday

GRAND RAPIDS (Area Code 616)

Allen, Roger & Assoc., 1126 McKay Tower, 49502	456-1527
Daverman Associates, Inc., 200 Monroe Ave., N.W., Vandenberg Center, 49502	451-3525
DeWinter, Marvin Associates, Camelot East Building, 3445 Lake Eastbrook Dr. 49506	949-9400
Firant, Edgar & Co., Inc., 353 Atlas Ave., S.E., 49506	459-0291
Gaastra, Jan T., AIA, 1424 Lake, S.E., 48506	459-5850
Haveman, James K. Arch., 618 Trust Bldg., 49502	451-0661
McMillen/Palmer & Assoc., 1424 Lake Dr., S.E., 49506	459-4159
Obyron & Nachtgall, Inc., 201 Monroe Ave., N.W., 49502	459-3151
Reid, Robert A., AIA, Arch., 2218 Wealthy, S.E., 48506	454-5775
Robinson, Campau & Crowe, Inc., 738 Trust Bldg., 49502	459-4149
Steenwyk-Thrall, Inc., 126 Ottawa Ave., N.W., 49502	459-9173
Welch, Kenneth C. (E), 547 Cherry St., S.E., 49502	241-3481
Wold, Bowers, DeShane & Covert, 345 State St., S.E., 49502	451-0785

GROSSE POINTE (Area Code 313)

William Kessler & Assoc., Inc., 18000 Mack, 48224	884-9500
--	----------

HARRISVILLE (Area Code 517)

Raseman, Richard P., (E), Box 8,	724-6245
--	----------

JACKSON (Area Code 517)

Commonwealth Assoc., Inc., 209 East Washington, 49201	787-6000
Lowden, Reed, AIA, 330 West Franklin St., 49201 Commercial Exchange Bldg., 49201	782-7378
Snyder, George E. Assoc., Inc., 714 W. Michigan Ave., 49201	784-7195

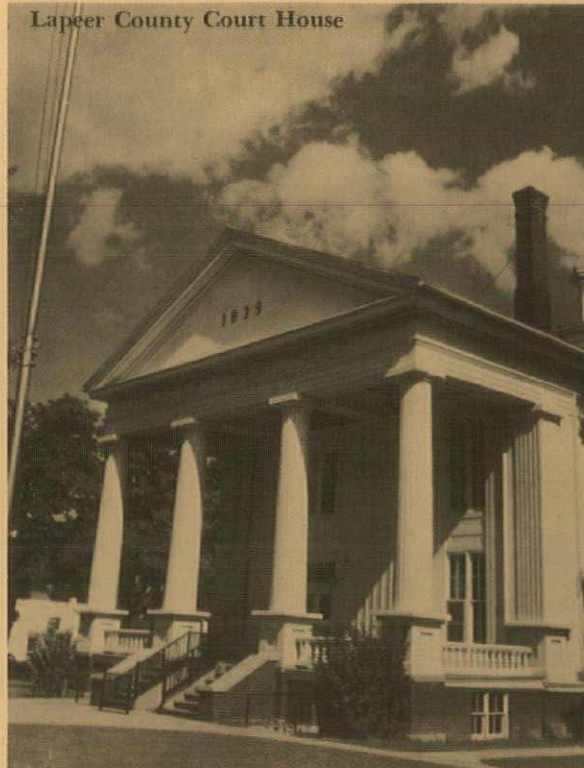
KALAMAZOO (Area Code 616)

Diekema, G. E. & Associates, 4615 W. Main St., 49007	343-4641
Kingscott, Louis C. & Assoc., 511 Monroe, P.O. Box 671, 49003	343-2657
Noordhoek, Adrain & Associates, AIA, 1611 Portage Street, 49001	382-2400
Parent & Phillips, 808 Kalamazoo Bldg., 49006 ..	343-2651
Prince, Richard & Assoc., Inc., 3623 Douglas Ave., 49007,	381-0694



Midland County Court House

Lapeer County Court House



Scurlock, Charles, AIA, 218 West Walnut, 49007	3
Stapert, Pratt & Sprau, Inc., 410 W. Walnut St., 49001	3
Stone, William, Architect, 808 Kalamazoo Bldg., 49006	3
Trend Associates, Inc., 4502 W. Main, 49007 ..	3

LANSING (Area Code 517)

Barber & Mattern, Inc., 930 E. Mt. Hope Ave., 48910	4
Black, Kenneth C., Assoc., Inc., 715 Stoddard Bldg., 48933	3
Frank & Stein Assoc., Inc., 8th Floor, American Bank & Trust Bldg., 48933	3
Holmes, Warren, Co., 820 N. Washington Ave., 48905	4
Laitala, Nuechterlein, Fowler Arch. Inc., 900 Bauch Bldg., 48933	4
Manson-Jackson & Kane, Inc., 520 Cherry St., 48933	4

EAST LANSING (Area Code 517)

DeWolf, Howard E., 209 Abbott Bldg., 48823	3
Mayotte, Crouse & D'Haene Architects, Inc., 700 Abbott Rd., 48823	3



Saginaw County Court House



City Hall
City of Bay City

LATHRUP VILLAGE (Area Code 313)

Dubuque, Richard, Assoc., AIA,
28021 Southfield Rd., 48075 358-4522

LIVONIA (Area Code 313)

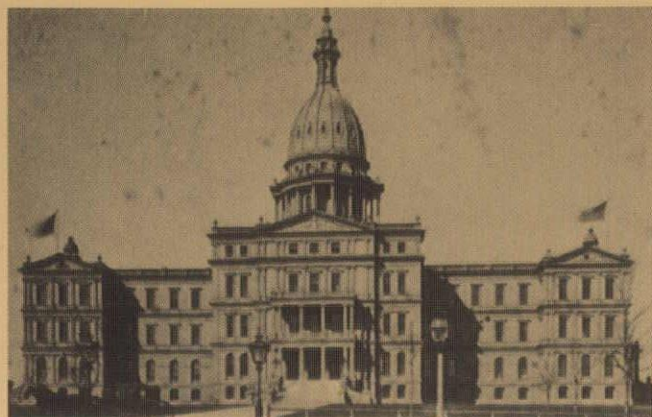
Lindhout, William P. Assoc., Arch.,
18518 Farmington Rd., 48152 477-2626
Ralls-Hamill-Becker Assoc., Inc.,
15223 Farmington Rd., 48154 427-2870

MIDLAND (Area Code 517)

Dow, Alden B., Assoc., Inc.,
315 Post St., 48640 835-6761
Hallett, Jackson B., Arch.,
110 E. Grove St., 48640 835-7252
Warner, Francis, 400 Dartmouth, 48642 835-4597

MT. CLEMENS (Area Code 313)

Daniell Associates Architects, Inc.,
36001 Harper Ave., Mt. Clemens, 48043 791-4242



MT. PLEASANT (Area Code 517)

Wakely-Kushner-Wakely Associates,
205 South Main St., 48859 773-9945

MUSKEGON (Area Code 616)

DeVries & Associates, Arch-Eng., Inc.,
610 Hackley Union National Bank Bldg., 49440 722-3626
Hooker, Kenneth N. Associates,
409 Michigan Bldg., 49440 722-3407
Valentine, E. E., (E), 99 W. Apple, 49440 722-2285

PONTIAC (Area Code 313)

Denyes & Freeman Assoc. Inc.,
615 Community National Bank Bldg., 48058 .. 338-0409

PORT HURON (Area Code 313)

Harman, Harry J. & Assoc., Inc.,
407 Fort St., 48060 982-9523

ROCHESTER (Area Code 313)

Bartlett, Fran, Assoc., 226 Walnut Blvd., 48063 .. 651-6060

SAGINAW (Area Code 517)

Frantz, Robert B. (E),
326 N. Washington, 48607 752-8133
Oeming & Nelson Archts., 1119 Gratiot, 48602 .. 799-5211
Prine-Toshach-Spears, Architects & Engineers,
Inc., 709 Federal, 48607 754-6551
Spence, Smith & Forsythe, Architects,
1241 N. Michigan, 48602 753-3401
Wigen, Morris, Tincknell & Associates, Inc.,
3444 Davenport St., 48602 793-3581

ST. CLAIR SHORES (Area Code 313)

Wakely-Kusher Assoc. Inc.,
21429 Mack Ave., 48080 778-8822

SOUTHFIELD (Area Code 313)

Harley, Ellington Associates, Inc., Pierce, Wolf
& Yee & Associates, Architects, Engineers,
Planners, 26111 Evergreen Rd., 48075 354-0300
King & Lewis Arch., Inc.,
17515 West Nine Mile Rd., Suite 825, 48075 .. 356-6316
Mandell, Seymour, H., 17445 Louise, 48075 353-5272
Pastor, Nicholas and Assoc., Inc.,
18610 West Eight Mile, 48075 358-3883
Pellerin, Earl W. & Associates,
21000 W. Ten Mile Rd., 48075 444-1340
Rossen-Neumann Assoc., Arch.,
24800 Northwestern, Suite 408, 48075 352-2520



Detroit City Hall 1870

Sachs Associates, Inc.,
 18911 West 10 Mile Rd., 48075 353-3055
 Savage, Gilbert W., Architects,
 20000 West 12 Mile Rd., 48075 356-1705
 Smith-Gardner Arch.,
 17356 Northland Park Ct., 48075 358-2111
 Volk & London Architects, Inc.,
 24472 Northwestern Highway, 48075 353-4820
 Yee, Wah Associates,
 17300 West 10 Mile Rd., 48075 353-8106

TRAVERSE CITY (Area Code 616)

Cornwell, Gordon Assoc.,
 401 E. Front St., 49684 946-7711
 Field, Graheck, Bell & Kline, Architects, Inc.,
 148 E. Front St., 49684 946-7116
 Stiffer, David L., 300 Grandview Parkway, 49684 946-7858

TROY (Area Code 313)

Stickel, Frederick, Assoc.,
 2900 W. Maple, 48084 646-7000

Straub, Van Dine & Associates, Architects,
 177 W. Big Beaver Rd., 48084 689-2777
 Yamasaki, Minoru & Assoc., Inc.,
 350 W. Big Beaver Rd., 48084 689-3500

WARREN (Area Code 313)

Ellis/Naeyaert Assoc., Inc.,
 11355 Stephens, 48089 755-4000
 Germany, O., 2500 West Nine Mile Rd., 48091 .. 755-4484

WYANDOTTE (Area Code 313)

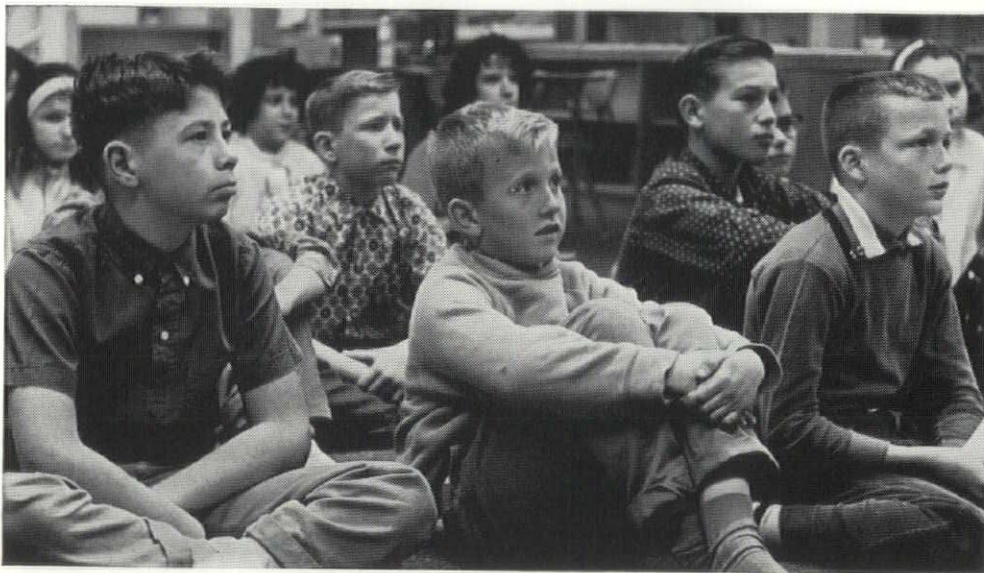
Yops, Jack Weston, Arch.,
 3005 Biddle Ave., 48192 285-1924

Editor's Note: Please advise Mrs. Rae Dumke of the Bulletin office of any errors, omissions or corrections to be made in this roster. 28 West Adams, Detroit 48226 (313) 965-4100

Grand Rapids City Hall



The all-electric school.



A better climate for learning.

There's a new concept at work here. It's school heating, lighting and food service from a single source. It means more school for the money. A better atmosphere for the kids. It's the all-electric school.

An all-electric school makes for a healthier, cleaner environment by elimination of smoke, soot, ashes. It also offers safe, simple, sure operation. Electric heating requires a minimum of attention. Reduces the possibility of human error. Simplifies building maintenance.

Eliminates wasteful whole school closings following boiler breakdowns.

Long heating-up and cooling-down periods are unnecessary. Heat is furnished when needed, shut off when not needed. Enables fuller use of school facilities during off-hours, even when an event is an unexpected, last-minute one.

Heating requirements differ if one side of a building is sunny, the other shaded. Electric heating easily adapts to varying conditions within a building. For hot weather,

wiring installed for the heating system can be used to energize air conditioners. The all-electric school removes the distraction of discomfort.

These benefits can be enjoyed at reduced electric energy rates, too. We've reduced monthly rates to: Net energy charge—\$175 for 10,000 kilowatt hours or less, 1.40¢ per kilowatt hour for the excess. Minimum charge—\$175 per month.

In Detroit call, WO 2-2100, Ext. 2223, for information. Elsewhere, call the nearest Edison office.

EDISON

Michigan State Board of Registration for Architects

The Michigan State Board of Registration for Architects announces the following dates for the architectural state board examinations:

Architect Examinations will be held in only three locations:

Detroit, Houghton, and Grand Rapids: Tuesday, Dec. 15, 1970, Architects, Exam C, History and Theory of Arch. (4 hrs.) 8 am to 12 noon; Tuesday, December 15, 1970, Architects, Exam I, Building Equipment, (4 hrs.) 1 pm to 5 pm; Wednesday, Dec. 16, 1970, Architects, Exam F, Building Construction, (3 hrs.), 8 am to 11 am; Wednesday, Dec. 16, 1970, Architects, Exam G, Structural Design, (5 hrs.) 12 noon to 5 pm; Thursday, Dec. 17, 1970, Architects, Exam H., Prof. Administration, (3 hrs.) 8 am to 11 am; Thursday, December 17, 1970, Architects, Exam D, Site Planning, (5 hrs.) 12 noon to 5 pm; Friday, Dec. 18, 1970, Architects, Exam E, Architectural Design (12 hrs.), starting at 8 am.

Please note: In Detroit examinations C, I, F, G, H and D, will be held at the Rackham Building in Detroit, Examination E, Design, will be held at the University of Detroit. All parts of the architect examination will also be held in Houghton at the Michigan Technological University and in Grand Rapids.

All applications must be in the State Board office by October 15, 1970. No applications can be accepted after this date. All applications must be signed and notarized on the back page or they cannot be accepted. The \$30.00 application fee for architect examinations must accompany all applications submitted to this State Board.

All supplements must be in the State Board office by October 15, 1970, for applicants who have passed the architect examination G, Structural, and wish to bring their experience records up-to-date for the remaining parts of the examination. There is no fee due with the supplement providing the applicant has passed examination G, structural. The fee for reexamination is \$20.00.

Where the applicant has attended a technical school, college, or university, he will request the Registrar to mail directly to this State Board, a complete transcript of his scholastic record, showing degree and giving grades received in various subjects and signed by the proper official. (This is required even though applicant has graduated.)

Architectural Examinations (No Books of Reference Permitted Except on Examination G—Structural). Starting with the June, 1960, examination, all Architectural candidates must pass a 36-hour written examination. The examination will cover the following: Examination C, History & Theory of Architecture (Formerly Part VII), 4 hours; Examination D Site Planning (Formerly Part II) 5 hours; Examination E Architectural Design (Formerly Part III) 12 hours; Examination F Building Construction (Formerly Part V) 3 hours; Examination G Structural Design (Formerly Part IV) 5 hours; Examination H Professional Administration (Formerly Part VI) 3 hours; Examination I Building Equipment (Formerly Part I) 4 hours.

Examinations C, F, G, H & I are multiple choice type questions.

The next scheduled architect examination after the December, 1970, examination, will be held in June, 1971, and April 1, 1971, will be the deadline for acceptance of new applications or supplements.

SPEC. WRITERS

When you need assistance writing specifications for roofing, sheet metal or waterproofing jobs call on the R.I.P.F.

Our Technical Consultant is ready to assist you on matters pertaining to the moisture-protection phase of the work.



Roofing Industry Promotion Fund

M. E. Smith
Exec. Secty.

3560 E. 9 Mile Rd.
48091

Warren
(313) 759-2140

WHEREVER YOU SEE THIS SIGN . . .



MICHIGAN IS ON THE MOVE

Albert Kahn 75th Anniversary



Sol King, FAIA
President and Director of
Architecture

The following article appeared in the March 30, 1943 issue of the Weekly Bulletin of the Michigan Society of Architects, an Albert Kahn Memorial Issue.

We reprint it here on the occasion of the celebration of the 75th Anniversary of the founding of the Albert Kahn Firm.

"A. K."

*The lead editorial in the Grand Rapids Press,
Dec. 9, 1942, by Roger Allen, A.I.A.*

When on an evening last June the members of the American Institute of Architects gathered in the ballroom of a Detroit hotel to witness the presentation of the coveted special medal of the Institute to Albert Kahn, the scene had an unscheduled picturesqueness. It was the night of a practice blackout, and as the guest of honor rose to speak every light in the hall was extinguished with the sole exception of a single lamp on the table before him.

"It is an odd thing, and symbolic of our time perhaps," said one of the speakers later, "that tonight the man who did more than any other man in the world to bring light to the factories of the world should receive the homage of his colleagues by the flickering light of a single lamp. But blackouts pass; the art of Albert Kahn remains."

Albert Kahn died suddenly Tuesday. His fellow architects will share their sense of loss not only with the leading industrialists of the world but with workmen in thousands of plants, of which Willow Run is only the last and largest of a long list, who work today in well lighted, convenient and superbly efficient environments because of the work of one of the most talented and brilliant designers the world has ever known.

The "daylight factory" is Albert Kahn's monument. He pioneered the use of reinforced concrete building; our own Press building was the first large building erected in the United States with a complete structural frame of reinforced concrete and Albert Kahn designed it. With his brother, the late Julius Kahn, he established the first

reliable load tables on which the whole vast present-day science of monolithic concrete design rests; he was the first to use vast areas of the new steel sash to throw floods of light into factory interiors; he struck to the heart of industrial design when he saw that the building was merely the skin to house the function performed within the building. His buildings were designed from the inside out; in the phrase that Louis Sullivan preached to an earlier America, "form follows function."

Stalingrad still stands today because of men fighting with guns and tanks and planes that rolled in an endless stream from plants that Albert Kahn showed the Soviets how to build. With a crew of 400 American architects and engineers he taught the Russian technicians to implant a new world efficiency of production into Muscovite peasantry.

The career of A. K., as his colleagues always called him, is another American answer to the nonsensical claptrap against democracy and the melting pot mouthed by Hitler and his creatures. The little immigrant boy, discharged from his first office job because his clothes were too redolent of the stable where he tended horses to get money to continue his education, went on to another job as office boy to George D. Mason, now in his eighties the dean of Detroit architects. Mason found him one day crying in the plan vault because, as the young Albert declared, "I'll never be an architect." He was wrong about that. He went on to win a scholarship that brought him two years of European study, then back in America he started a career which proved all over again that in this country any man with something real and vital to contribute to his generation will have the opportunity to make that contribution.

Michigan can be proud of this man who found the typical factory an ill-lighted, dangerous and inefficient barn and left it a sleek, well lighted, sanitary and air conditioned machine. This, in essence, was his unique contribution: the theory that a building is a machine to produce other machines. But he never became a machine himself, and in a thousand drafting rooms yesterday men laid down their pencils and knew that something vital and warmly human had gone out of American architecture.



SECURITY LIGHTING

for the protection of people and property

Today, outdoor security lighting has become a necessity, and plant owners are installing it. When building exteriors and outdoor storage areas are well-lighted, it discourages theft and vandalism . . . provides protection for employees, plant and property. These are reasons why now, more than ever before, outside lighting should be an integral part of any industrial building design. Our special representatives throughout our service area are ready to assist you in matters pertaining to outdoor security lighting.

**Call or write George C. Way, Consumers Power Company
General Offices, 212 W. Michigan Avenue, Jackson, Michigan
Phone (517) 788-0802; or Marketing Department
at any of the Company's 15 Division Offices.**



**Consumers
Power
Company**

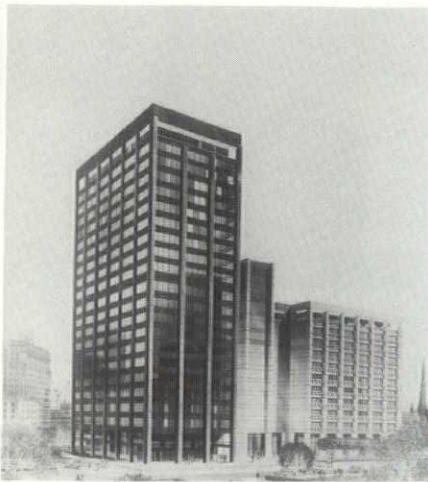


rendering of 10 story
downtown office tower
Detroit
*Louis G. Redstone —
architect*

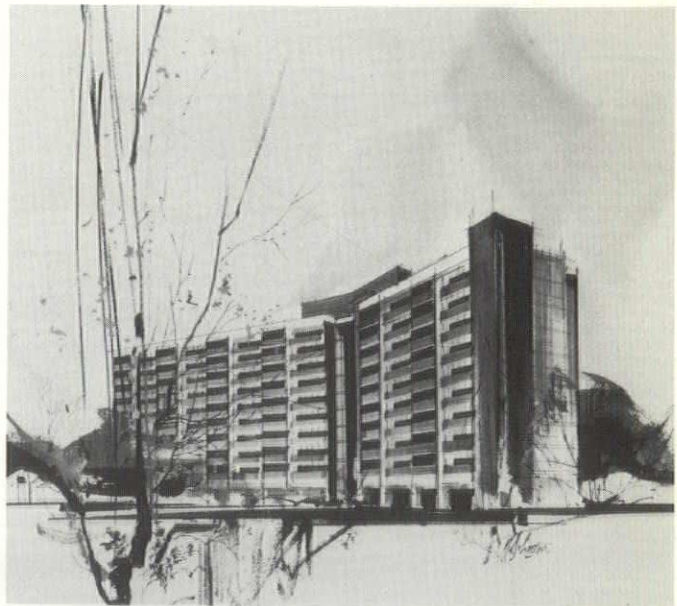
Michigan Builds . . .

New Projects pictured on the following pages have been supplied to us over a period of several months and are only a few of the many new projects now under construction.

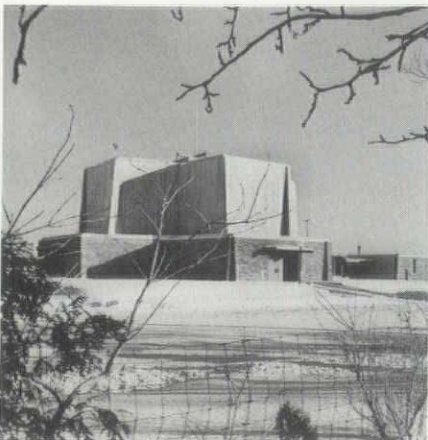
Your contributions to this continuing feature are encouraged.



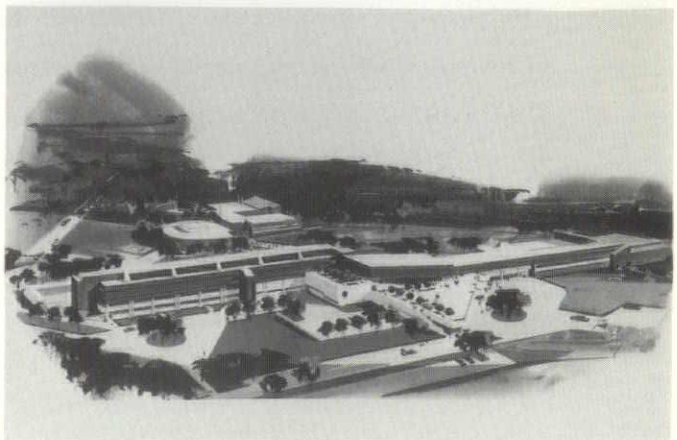
rendering of 21 story
tower addition to
Detroit Trade Center
*Kenneth Drake
Associates — architect*



Warren West Housing
for Senior Citizens
Detroit
*Eberle M. Smith —
architect*



Resurrection Reformed
Church
Flint, Michigan
*Kammeraad-Stroop-
Van Der Leek — architect*



St. Clair College of
Applied Arts &
Technology
Windsor, Ontario
*Eberle M. Smith —
architect*

**Finney Jr.-Sr. High
School expansion
Detroit**
*Eberle M. Smith —
architect*

**Oakland County Law
Enforcement Complex
Pontiac, Michigan**
*Giffels & Rossetti, Inc. —
architect*

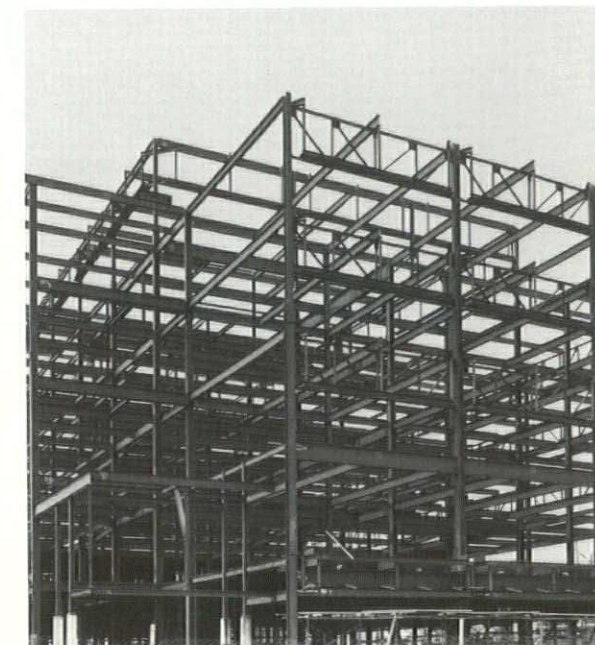
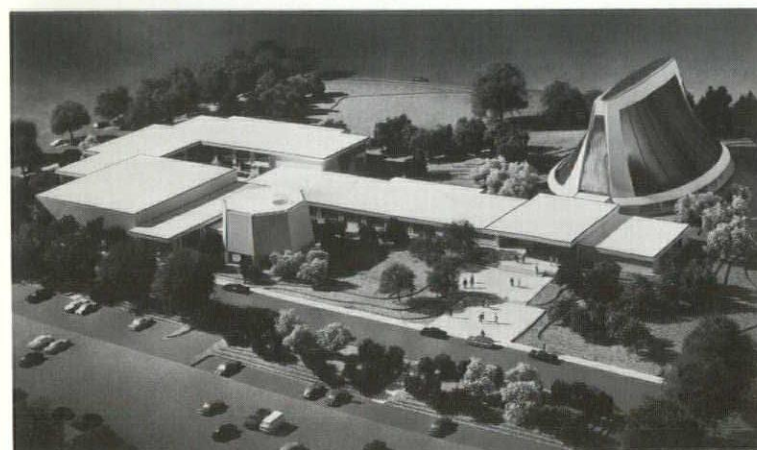
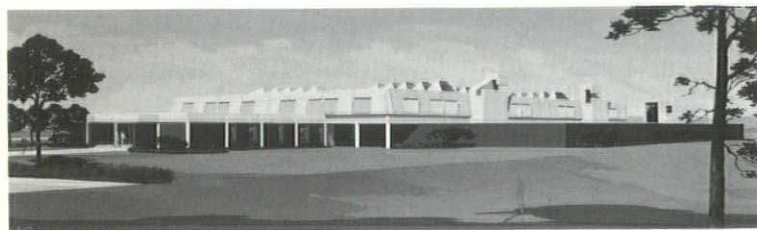
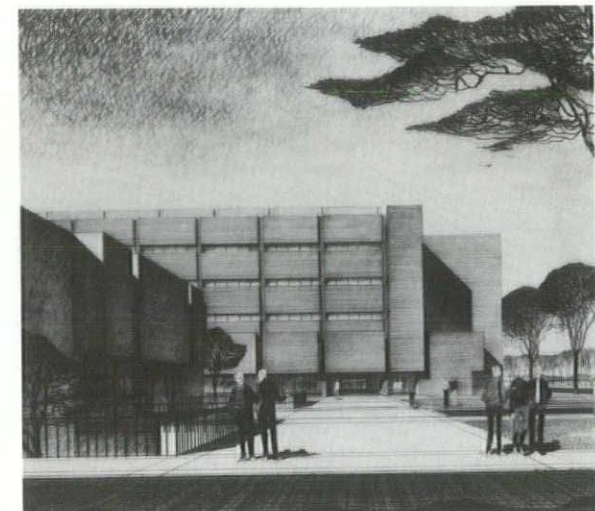
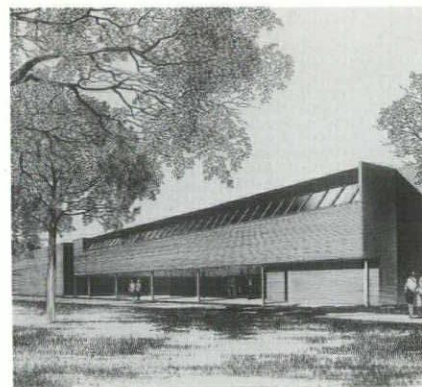
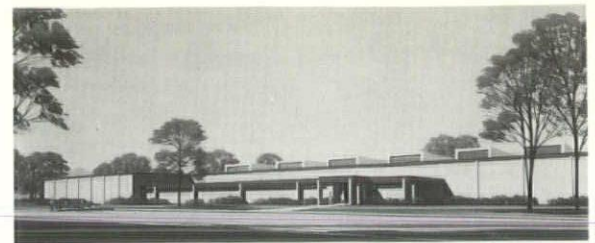
**rendering of new
Temple Beth El
Bloomfield Township**
M. Yamasaki — architect

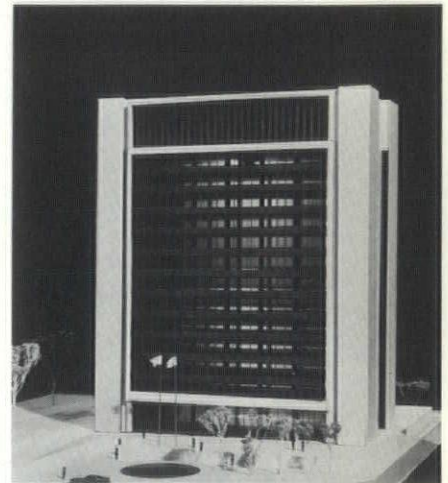
**Bohn Aluminum
& Brass Company —
Plant #16
Gulf & Western
Products Company
Holland, Michigan**
*Kammeraad-Stroop-
Van Der Leek — architect*

**Ashley H. Clague
Jr. High School
Ann Arbor**
*Eberle M. Smith —
architect*

**(rendering) Foreign
Language & Speech
Classroom building
Wayne State University —
Detroit**
*Jickling & Lyman —
architect*

**Foreign Language &
Speech Classroom
building
Wayne State University —
Detroit**
*Jickling & Lyman —
architect*





Interior
Christ Memorial
Reformed Church
Kammeraad-Stroop-
Van Der Leek — architect

10 story office tower
Detroit
Louis G. Redstone —
architect

First Michigan Bank
& Trust Company
East Town Office
Holland, Michigan
Kammeraad-Stroop-
Van Der Leek — architect

Security Bank &
Trust Company
Lincoln Park, Michigan
Eberle M. Smith —
architect



Floors.
 They've been stepped on long enough.
 What's really needed today is a floor that
 can also be a roof.
 Or a beautiful ceiling.
 And won't just lay there and be a dull slab
 of a thing.
 And won't burn.
 Or rot.
 Or squeak.
 Or transmit offensive noises.
 What's needed today is a floor with
 imagination.
 A floor like ours.
 Because our floor can also double as a
 dramatic ceiling.
 Or be a roof, if you'd like.

And it's all made possible through a floor and
 roof system made up, fascinatingly enough,
 of textured, lightweight concrete modules.
 We call it the *Celdex* pre-stressed concrete
 floor and roof system.
 You can call it *Celdex*, for short.
 And remember it's an easy-to-install long-
 span system. Saves cost for onsite labor.
 And construction time.
Celdex is absolutely perfect for apartments,
 townhouses, offices, churches, hospitals,
 nursing homes . . . or just about any building
 you have on the drawing board right now.
 So why don't you send for us.
 Or for our remarkable manuals.
 We both do a helpful, interesting, informative
 job of telling about *Celdex* and why it's
 your kind of floor and roof system.

CELDEX Floor and Roof System
 c/o William Moors, Inc.
 31475 Utica Road
 Fraser, Michigan 48026

☐ Send a representative
 ☐ Send your remarkable manuals.

Name _____
 Title _____
 Company _____
 Address _____ Zip _____
 City _____
 State _____
 Phone _____

CELDEX®
 WE DO OUR THING
 SO THAT YOU CAN DO YOUR THING BETTER

Copyright 1970 Wm. Moors, Inc.

CALENDAR

1970-1971

- October 21 — Detroit Chapter Annual Meeting and Election of Officers; Founders' Room — ESD
 October 31 — MSA-Continuing Education Program — Hospitality Motor Inn — Lansing, Michigan
 November 1, 2, 3 — 7th Annual Architect-Researchers Conference of the AIA — Cincinnati, Ohio — Stouffers Cincinnati Inn
 November 4-8 — National Trust for Historic Preservation in the U.S. — 24th Annual Meeting "Preservation in Our Changing Cities" — Charleston, South Carolina
 November 12 — Detroit Chapter Honor Awards Program — Patrick Horsbrugh — Sheraton-Cadillac Hotel
 1971, June 20-24 — National AIA Convention — Detroit

WALD Calendar 1970-1971

- October 20—Tea and Wig Demonstration
 November 17—Pottery tour—John Glick Studio Farmington, Michigan
 December 15—Christmas Party with Boutique
 January 19—Art Institute—Michigan Artists
 February 16—London Art Studio Tour and Lunch
 March 16—Art Institute
 April 20—Tour Detroit Art Galleries
 May 18—Art Institute
 Mrs. Norman Skruch (Carol) will be acting President for the remainder of the 1970 and 1971 season.

MICHIGAN DRILLING CO.

a division of Michigan Testing Engineers

SOIL & FOUNDATION ENGINEERS
SERVING THE MIDWEST SINCE 1928

Soils Explorations and Laboratory
Testing for Foundations and Other
Structures

Consulting Services in Soils
Engineering, Research & Other
Special Problems

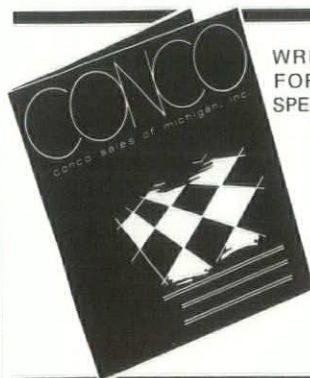
14555 WYOMING AVE.
DETROIT 38, MICHIGAN
933-9366

A New Name



Providing An Old Idea . . .

Client Satisfaction resulting from one responsibility service/Installers of Co-Polymer Chemicals, Inc. and Master Mechanics Co. Flooring and Wall Surfaces



WRITE OR CALL
FOR COMPLETE
SPECIFICATION
PORTFOLIO

Installed and Serviced by CONCO

Conco Sales of Michigan, Inc.
12350 Merriman Road
Livonia, Michigan 48150
Phone: Area Code 313/425-7770

For **LEAK-PROOF ROOFS**
specify

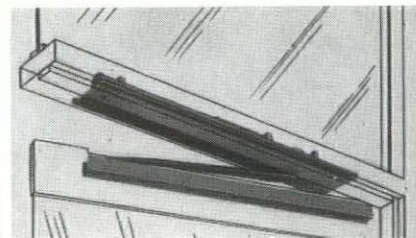


The only ROOFING INSPECTION SERVICE which **GUARANTEES** performance of roofing systems covered by the M.R.C.A. TWO YEAR warranty.

Now serving the Wayne, Oakland and Macomb Counties area.

Detroit Roofing Inspection Service, Inc.

3560 East 9 Mile Road
Warren, Mich. 48091 (313) 759-2140



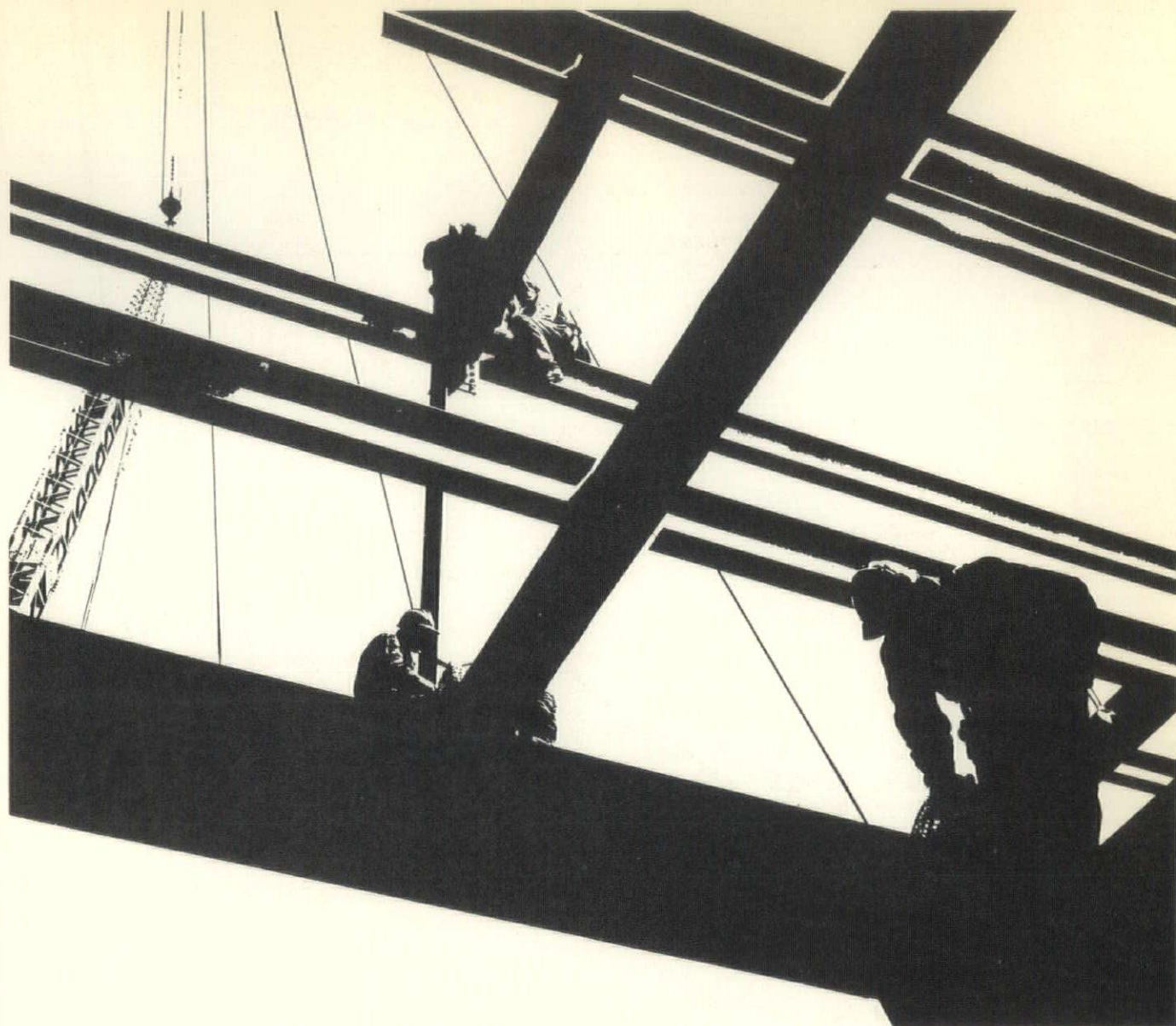
DOOR CLOSERS

14 BASIC MODELS

MICHIGAN REPRESENTATIVE
Robert A. Eisen & Assoc.

4264 N. Woodward, Royal Oak, Mi.
48072
(313) 564-6232 or 564-5951

● See our Full Line in
C.S.I. Product Directory
Div. #0825, 0870, 0880, 1080



dream
in
steel

Exciting, dramatic, new designs in structures require the advantages of steel framing. Steel's economy and versatility answer every construction challenge. Stronger steels, improved design techniques and new erection methods offer unlimited flexibility in architectural achievement. From framing to exteriors, steel continues to prove its practicality and aesthetic appeal. Maybe these reasons are why so many progressive architects are aware of steel's superior adaptability to solve the toughest design problems. Maybe this is why so many new, exotic and unique architectural ideas are being developed in steel. Isn't it time that you, too, began dreaming in steel?

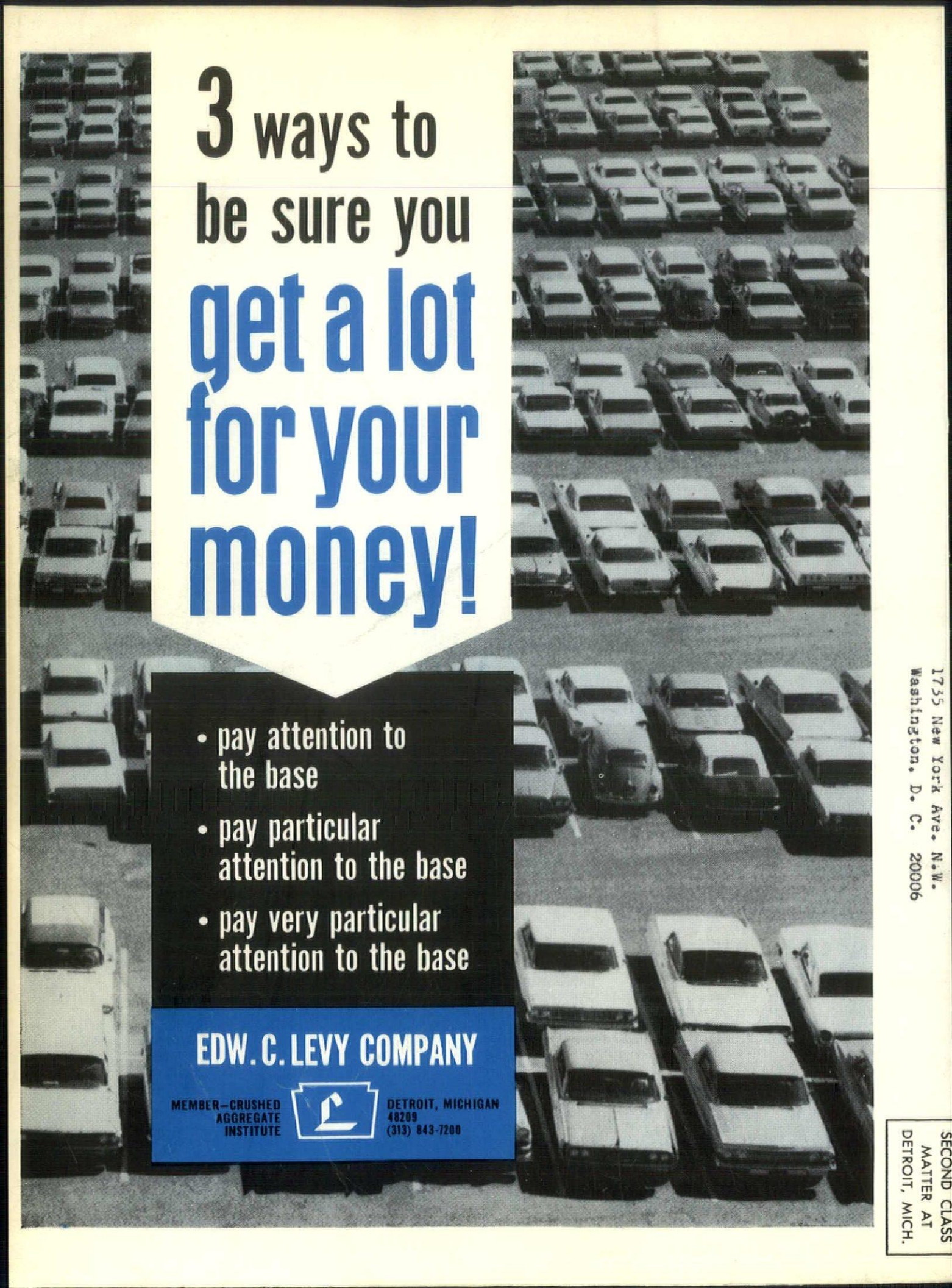


GREAT LAKES FABRICATORS AND ERECTORS ASSOCIATION

519 New Center Building

Detroit, Michigan 48202

REPRESENTING 68 FABRICATORS AND ERECTORS OF STRUCTURAL STEEL AND METAL BUILDING PRODUCTS



3 ways to be sure you get a lot for your money!

- pay attention to the base
- pay particular attention to the base
- pay very particular attention to the base

EDW. C. LEVY COMPANY

MEMBER—CRUSHED
AGGREGATE
INSTITUTE



DETROIT, MICHIGAN
48209
(313) 843-7200

1735 New York Ave. N.W.
Washington, D. C. 20006

SECOND CLASS
MATTER AT
DETROIT, MICH.