

# BULLETIN

AMERICAN INSTITUTE  
OF  
ARCHITECTS  
MAY 17 1965  
LIBRARY

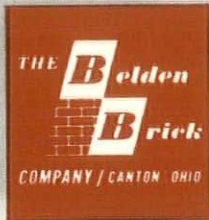
*michigan society of architects may 1965 50c*



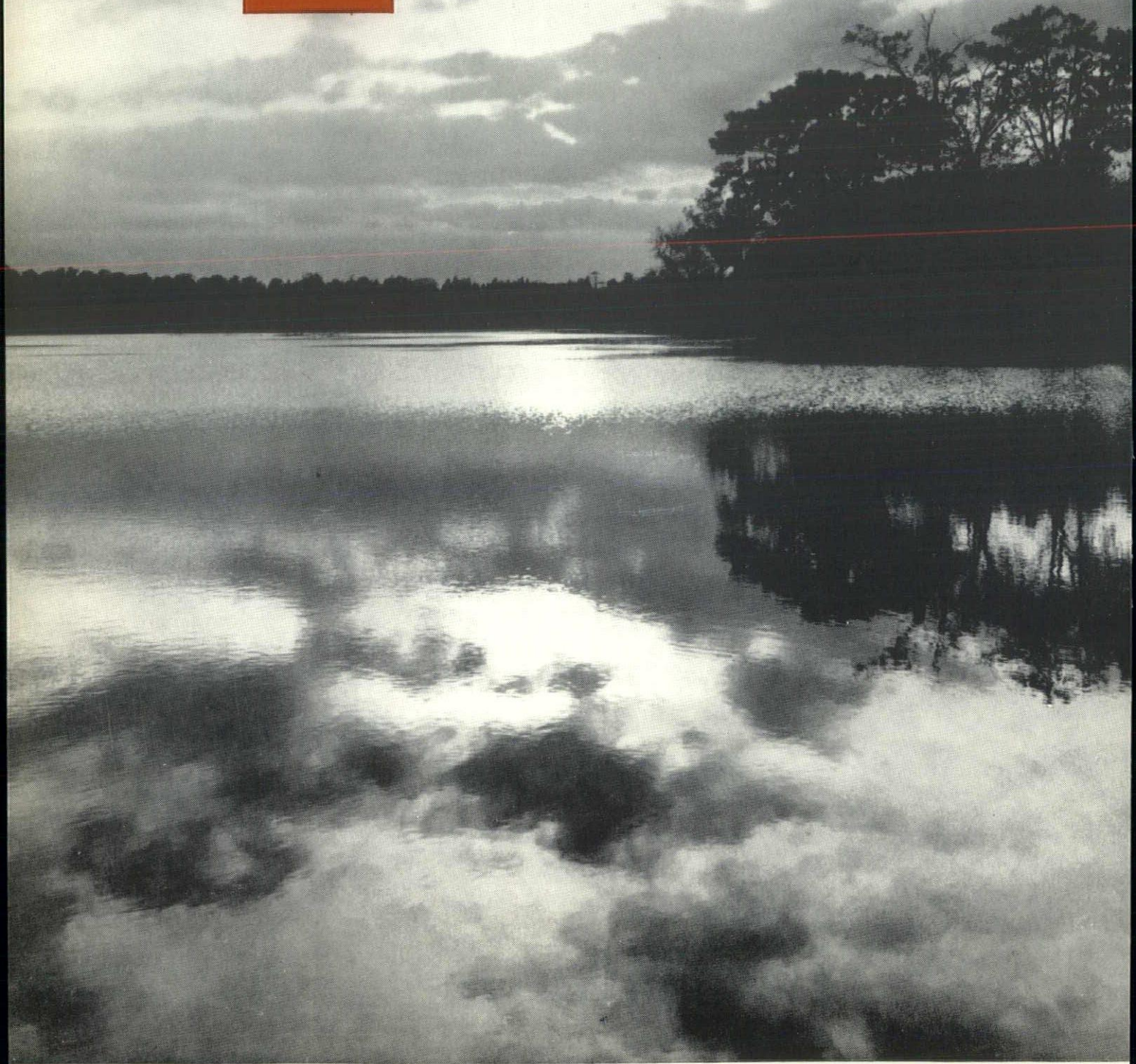
# A Communion with Nature

Brick is nature's most natural building material. Brick communes with nature . . . and adapts perfectly to natural surroundings. That's why creative architects call on BELDEN for the most imaginative selection of brick . . . over 200 variations in color, texture and size. BELDEN provides the largest selection in the industry to free the imagination for limitless scope of design.

Your nearest BELDEN Dealer will be happy to provide you with samples and our new, 4 color brochure, specially designed with the architect in mind.



EIGHT MODERN FACTORIES LOCATED AT CANTON,  
SOMERSET, PORT WASHINGTON, SUGARCREEK,  
AND UHRICHSVILLE, OHIO





# BULLETIN

may 1965  
michigan society of architects

Volume 40 — No. 5

THE MONTHLY BULLETIN  
IS PUBLISHED FOR THE  
MICHIGAN SOCIETY OF  
ARCHITECTS TO ADVANCE  
THE PROFESSION OF  
ARCHITECTURE IN THE  
STATE OF MICHIGAN.

## EDITOR—

James B. Hughes, AIA

## ASSISTANT EDITOR—

Ann Stacy

## ART DIRECTOR—

Edward Hutcheson

## GRAPHIC ARTS

## CONSULTANT—

Gary R. Grout

Ann Arbor Press

## ADVERTISING

## DIRECTOR—

Charles O. Irvine

## CHAPTER ASSOCIATE

## EDITORS

Detroit . . .

Wallace Cleland, AIA

Flint Area . . .

Dale A. Suomela, AIA

Grand Valley . . .

Jay H. Volkers, AIA

Kuron Valley . . .

Henry S. Kowalewski, AIA

Mid-Michigan . . .

John E. Crouse, AIA

Northern Michigan . . .

Richard H. Greenless, AIA

Oaginaw Valley . . .

William Stenglein, AIA

Western Michigan . . .

Donald W. Stearns, AIA

5 Architectural Education  
at Pratt Institute  
by Olindo Gossi

9 News

11 1300 Lafayette East

15 Construction in Michigan—  
A Michigan Week Story

16 M.S.A. Honor Awards

19 Announcements

20 Classified

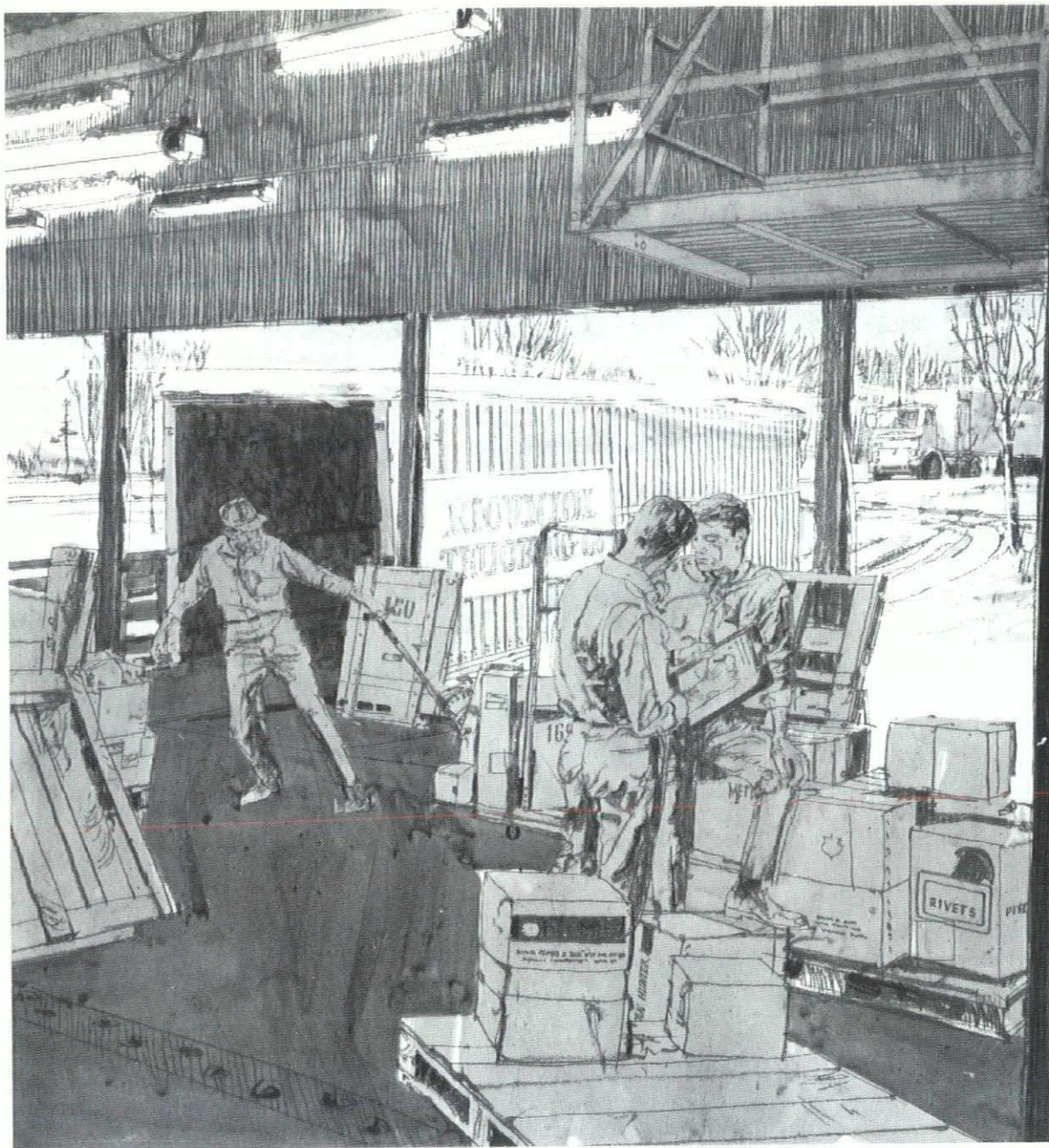
22 Advertisers Index

24 Calendar

Monthly Bulletin, Michigan Society of Architects, the official publication of the Society; all Michigan Chapters of the American Institute of Architects; Women's Architectural League Detroit (WALD); Producers Council, Inc., Michigan Chapter; Builders & Traders Exchanges of Detroit, Grand Rapids and Lansing is published monthly by the Michigan Architectural Foundation; Editorial and Advertising Offices—28 West Adams, Detroit 26, Michigan, Phone: 965-4100.

Monthly Bulletin, Michigan Society of Architects, is published monthly at 28 West Adams, Detroit 26, Michigan. Entered as second class matter January 15, 1946 at the Post Office at Detroit, Michigan under Act of March 3, 1879. Subscription price, \$4.00 per year (members \$2.00). 50 cents per copy.





## How to keep workers out on the dock... from being out in the cold

Do your workers waste valuable time because they are cold?

Dock workers could dress warmly enough for the outdoors — but then they'd be too warm after re-entering a heated building. Or they'd lose valuable time slipping in or out of a coat.

*Or you could solve the problem by installing infrared quartz lamps.*

That way men can work comfortably, even in shirt sleeves, on a loading dock

while the air temperature two feet away may be below freezing.

Quartz lamps radiate heat like the sun. Electric radiant energy warms only the objects it strikes, not the air. Warmth is instantaneous — there's no waiting for warm-up even after a cold night. And when quartz lamps are on, they light the area, and keep it free of snow and ice.

Comfort heating with quartz lamps

can be used for large open areas, such as loading docks. Or use the lamps for spot heating or wherever warm air heating is inefficient or ineffective.

Improved efficiency of the worker and safety have paid for radiant heating installations.

Want to hear more? Good. In the Metropolitan Detroit area, call WO 2-2100, ext. 2861. Elsewhere, call your Edison office.

**EDISON**



# Architectural Education at Pratt Institute

by Olindo Grossi, Dean  
School of Architecture  
Pratt Institute

*This is one of a series of articles by prominent dedicated educators on the role of the colleges in raising the standards and goals of architectural education. Because of the vital importance of this problem, it would be very desirable to have a reaction of the practicing architects to these articles. An exchange of opinions would help immeasurably in setting the guidelines and correcting outdated methods.—Louis G. Redstone.*

Few students, a minority of practicing architects and most architectural educators are aware of the swift currents that sweep teaching today. In the past thirty years the very essence of teaching has been challenged; major reforms have been instituted and there appears to be a return to certain ancient ideals that some of us never sacrificed. At the heart of the matter is architecture. How do you teach it? How do you make someone want to be — not just an architect — but a great architect?

This is the subject of architectural education. We are grappling with a readily identifiable goal, an ideal which the student must take with him. He must want to be a great architect. He must want to be creative — not passive. His standard must be excellence. He must seek the purest form, the clearest esthetic, the finest structure. Yet even if we know the goal, how is it achieved?

For some people this is like talking about goodness or truth or beauty or any of the other perennial philosophical contemplations. After all, greatness is an intangible quality that eludes description. The minute we attempt to define it, we compromise our vision revealing our own limitations but not those of the individual who happens to be great. But quite apart from our difficulty with definitions, we find that students have no similar trouble. They can spot greatness and follow a bright star without resorting to a justification.

One of the satisfactions from teaching, of course, is this willing dedication to the ideal. At the heart of the student's search is what is right? what is best? what noble goal can he dedicate his life to? How can he be creative? And in this respect, in these questions, students remind teachers of the basic issues.

Yet, "the basic issues" underlie most college education. Whatever students are forced to think, there is at least some preoccupation with essences. The question then becomes — how is architectural education different or distinctive? The answer I can give has to be in terms of what we do at Pratt Institute. For readers who went to school elsewhere there will be a basis for comparison.

The distinctive characteristics in the five-year architectural curriculum at Pratt include the immediate introduction of freshmen into the total professional spectrum, the balance and interrelation of the liberal arts, design, structures, history, planning, and the many other disciplines, and the highly professional makeup of the architectural faculty all of whom practice including a high proportion of part-time teachers who teach only one or two half days each week. This is not to say, any or all of these qualities make us unique, but the combination plus our geographical location creates a singular quality of education that we consciously encourage.

The use of professionals as teachers is not unusual in architecture. In some parts of the nation it may not be possible to staff a school with practicing professionals, but in New York we are fortunate and try to make the most of it. As with most college teachers our instructors and professors have studied to be professionals — not teachers.

Our high ratio of part-time teachers derives from a conscious decision even though it presents difficulties of administration and coordination. In the midst of New York's wealth of talented professionals we find many who are willing to give a day of their time to teaching *because it stimulates them*. Selfishly we accept many of these offers because it is good for our students.

In the stimulation of design ability the active professional is a potent teacher. His presence adds a dimension of architectural reality to normal studio experience and serves as a strong motivating force.

Taking a young student from high school who indicates strong motivation to be an architect and plunging him into a sequence of professional courses, introducing him to the design vocabulary, conditioning him to studio experiences — giving him this exposure to architecture at the same time he is introduced to liberal arts courses — all of this constitutes a unique educational experience. Sociology may be studied in the abstract as an individual course; design may be handled as another separate course; but in the mind of the student they are happening at the same time and consequently shape his architectural perceptions. The same is true of other courses that supplement the architectural curriculum.

Since design constitutes a large part of the architectural experience, it is important for the student to begin as early as possible. Our experience suggests that in terms of design youth is no handicap. However, it is true that some students with a wavering commitment to architecture would be better off in a liberal arts curriculum until they can give themselves completely. We candidly suggest this to some indecisive high school graduates.

The Freshman year is probably the most critical for the student, and that makes it the most critical for teachers, also. Over a number of years the Freshman program has been altered significantly. Selected individual courses in design, construction and representation were required to introduce the student to a total concept of architecture, yet individual courses do not always become integrated in the student's mind. Our solution was to integrate them into a complete studio experience as an individual course made of these related parts. This "core" course constitutes two-thirds of the Freshman curriculum.

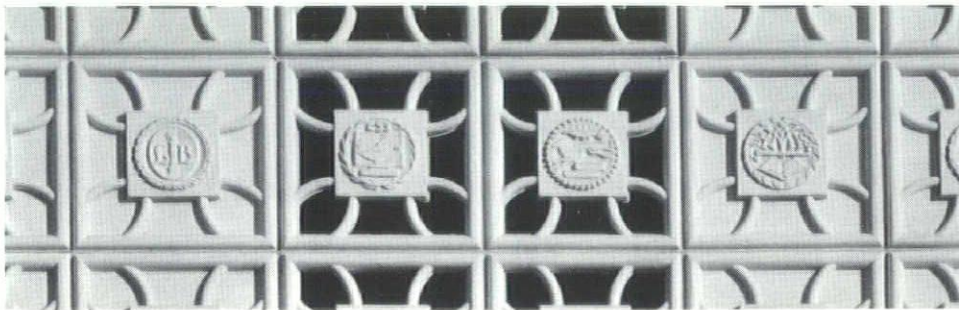
Our emphasis is on design — almost a third of the student's credits will be received in design courses. They range from the design of a small object to the planning of a large community wherein the relationship of one building to another is examined, as well as the services required by groups of buildings. Gradually the student is led through various design phases of architectural experience — from buildings and groups of buildings to town and community planning problems.

The materials and structures sequence is another major



ONE of a series of advertisements showing how top Michigan architects effectively use versatile concrete

## Precast concrete panels create a distinctive wall pattern for the new Lansing Library



Lansing's beautiful \$2 million Public Library. Architects: Kenneth C. Black Associates, Inc., Lansing; Structural Engineers: Raymond C. Reese Associates, Toledo, Ohio; General Contractor: Sorensen-Gross Construction Co., Flint; Precast concrete panels: Badger Concrete Co., Oshkosh, Wisconsin.

Close-up view shows how the distinctive colophons, or trade marks, of book publishers were cast in concrete panels to achieve the striking exterior wall pattern. Each panel is 4½ feet square.

building a better  
Michigan  
with CONCRETE

The excitement and beauty modern concrete gives to civic structures is dramatically demonstrated in Lansing's attractive new Public Library.

Distinctive and imaginative precast concrete panels are combined with concrete frame and floors in outstanding architectural design. The panels reproduce in

concrete the colophons of eight U. S. book publishers. Pierced panels, backed by grey plastic, provide unique window interest. Long-span concrete joists allow great flexibility in interior layouts. Lansing's proud new cultural center came from the drawing boards of Kenneth C. Black Associates.

**PORTLAND CEMENT ASSOCIATION** 900 Stoddard Building, Lansing, Michigan 48933

*An organization to improve and extend the uses of concrete, made possible by the financial support of most competing cement manufacturers in the United States and Canada.*



discipline which begins in the latter part of the first year and continues throughout the remainder of the curriculum. This battery of courses is related to studies in the physical sciences such as physics, statics and strength of materials. Emphasis here is on the properties, manufacture and application of materials for structural and non-structural use, and this knowledge is coordinated with structural design courses in wood, steel and concrete to give the student an understanding of sound engineering methods.

Integration of liberal arts courses is included through the curriculum. Here the student is exposed to the great ideas of the social sciences, fine arts, literature and philosophy. Distribution of these courses throughout the curriculum keeps the student aware of the relationship of architecture to society. Indeed, as they are combined with history and philosophy of architecture courses, they create a basis for cultural values needed by a mature professional.

Aside from the curriculum there are the other student experiences — social events, student government, athletics and various group activities. Contacts within the School of Architecture develop maturing associations with graduate students in addition to a developed program of research projects.

Four different programs lead to graduate degrees. They are the Master of Architecture program, the Master of Science — Tropical Architecture program, the Master of Science — Planning curriculum and a combined course of planning and architecture.

The Master of Architecture creates an opportunity for the serious student to delve more deeply into design, structure, equipment and other phases of professional knowledge. Special attention is given to contemporary problems, industrialization and esthetics to broaden the young architect in fields of continually advancing standards. Another integral part of the curriculum is the research project which is an independent, original investigation of some aspect of housing, community planning, or industrial and commercial projects.

In the Master of Science — Tropical Architecture program emphasis is directed to the problem of the Middle East and the tropical areas — yet it attracts students from Japan, the Caribbean and India, as well as Middle Eastern countries. It is designed for graduate architects from tropical countries who seek advanced work in architecture and planning and for American architects who wish to prepare for work in the tropics. Like the Master of Architecture curriculum it provides an experimental environment for investigation of design and technology.

The two year Master of Science in Planning program emphasizes the close association of architecture and city

planning. Emphasis throughout the curriculum is between the physical, social, economic and political forces at work in shaping the urban environment. Theoretical foundations in this curriculum direct the student's attention to the interaction of these forces so that he will develop an awareness of environment as a whole comprised of disparate parts.

A six-year program combines the Bachelor of Architecture curriculum with the Master of Science — Planning in order to close the gap between planning and architecture. Through this means architects are trained for the planning field and a planning education is added to the skills of architects.

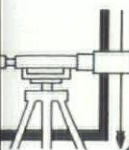
Since all graduate programs emphasize research activities, it is fitting that a department within the School directs and handles specific research tasks. These practical investigations provide opportunities for graduate students to make meaningful contributions at the same time they are completing general course requirements.

The Research Department carries out programs dealing with both theoretical and applied building research, architecture and planning. The talents of faculty members with a desire to undertake deeper study of problems are brought into a variety of projects sponsored by both public and private organizations. In addition to providing a creative outlet for research-minded faculty members the research program is an organizational framework in which the School may follow new trends in the fields related to planning and architecture. Recent projects have included preparation of a Steel Homes Design Manual (sponsored by the American Iron & Steel Institute), a variety of community urban renewal programs, analysis of cost reduction methods for apartment building (sponsored by the Housing and Home Finance Agency), structural test of the New York State World's Fair Pavilion (sponsored by the New York State Commission for the Fair), a study of school building types (sponsored by New York City Board of Education and the Educational Facilities Laboratories), and an adult educational program in urban renewal (sponsored by the Rockefeller Brothers Fund).

Through the integration of undergraduate, graduate and research programs the school of Architecture seeks to open the many doors of architectural experience to students. By bringing together a mixture of talents, attitudes and abilities we are not seeking to indoctrinate with a point of view. On the contrary the dominant ideas of architecture are introduced by their most vigorous spokesmen in an atmosphere of intellectual freedom so that the student may listen, consider, experiment and finally make his own decisions.

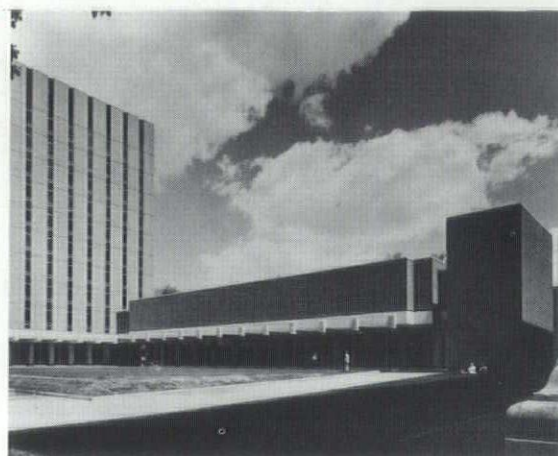
## UNIVERSITY OF MICHIGAN PHYSICS AND ASTRONOMY BUILDING

ALBERT KAHN ASSOCIATED ARCHITECTS & ENGINEERS

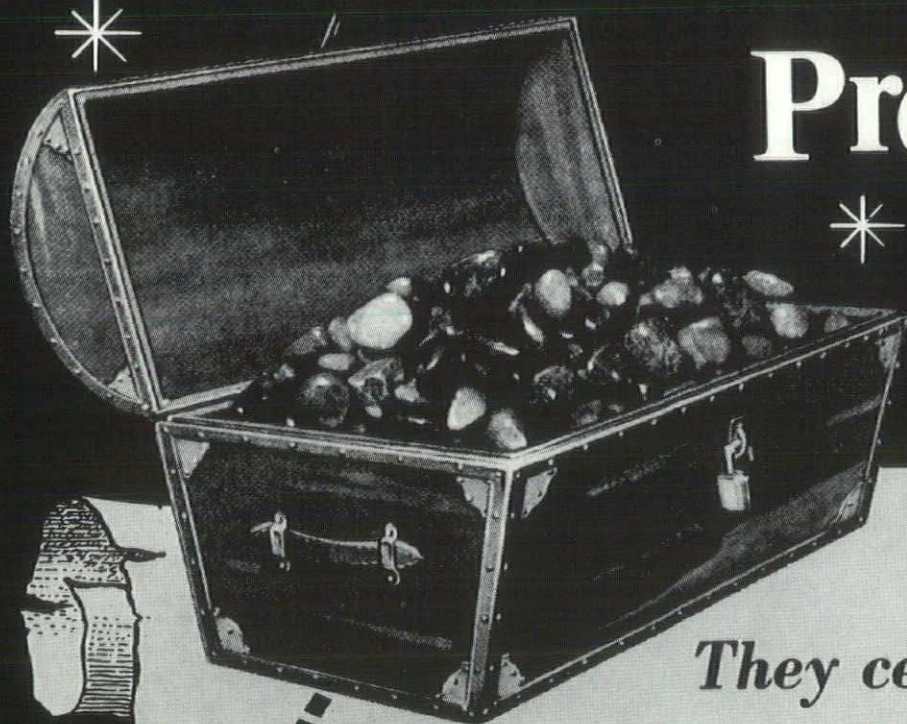


### A. Z. SHMINA & SONS CO.

P.O. BOX 4085 NORTHEASTERN, STATION 6275 SCHAEFER ROAD,  
DEARBORN, MICHIGAN 48126 AREA CODE 313/584-2350







# Precious Stones?

*They certainly are!*

We make them that way. All our Detroit area concrete aggregates now receive the benefit of treatment by **HEAVY MEDIA SEPARATION!** We call this new policy **TOTAL PRODUCT TREATMENT.** It's your assurance of *gem* quality at *gravel* prices.

OXFORD

ROMEO

X marks the spot for our Green Oak, Oxford and Romeo plants—so stop searching and start using or specifying materials produced by the **AMERICAN AGGREGATES CORPORATION** where the policy is **TOTAL PRODUCT TREATMENT.**

It's a decision you'll always *treasure!*



GREEN OAK

**American  
Aggregates  
Corporation**

12500 Greenfield Ave., Detroit, Michigan 48227  
Area Code 313 — VE 5-3050



## Seminar/Workshop Program Announced

Construction Documents: Today and Tomorrow will be the theme of the Seminar/Workshop to be held at the Michigan Union, Ann Arbor, Friday and Saturday, May 14 and 15.

Sponsored jointly by M.S.A. and the Detroit Chapter, A.I.A., this Seminar will explore the advantages offered by the use of current and future communications media, resulting in greater office efficiency, more accurate bids, improved field relations, and satisfied clients.

Techniques developed in other industries are revolutionizing the methods of preparing, reproducing, and storing documents which serve as our means of communication with our clients and those who build what we design. The seminar will explain these techniques and systems and show how the rapidly approaching use of the computer will improve design and construction through greater efficiency in communications.

Participating in the Seminar/Workshop will be: Louis Menk, Director Detroit Chapter, AIA; Robert F. Hastings, FAIA, Treasurer of the American Institute of Architects; Professor M. W. Isenberg, Pennsylvania State University, Associate Editor of MODULAR PRACTICES IN BUILDING; Charles H. MacMahon, Director Michigan Society of Architects; Robert Spiegel, Vice President Palmer-Smith Co., General Contractors; Professor Gifford H. Albright, Pennsylvania State University; MODCON Research Project on the Computer in Architecture; Herbert F. Swinburne, FAIA, Chairman AIA Committee on Research for Architecture; Denis C. Schmiedeke, Brunner Research Grant For Development of a Correlated System for Construction Documents; Robert Stellwagen, Jr., Stellwagen Dilemante & Mouw, Consulting Mechanical & Electrical Engineers; Professor Walter Sanders, FAIA, Research Project: COMPUTER TECHNIQUES IN PROGRAMMING ARCHITECTURE; Harold Rosen, FCSI, Author SPECIFICATIONS CLINIC IN PROGRESSIVE ARCHITECTURE; Ralph Stephenson, Consultant on Critical Path Method; Charles W. Lane, Director Michigan Society of Architects; Alfred P. Bohn, General Motors Re-

search, Reproduction Techniques and Jan C. Rowan, Editor of PROGRESSIVE ARCHITECTURE.

Registration is scheduled from 9:00-9:30 A.M., Friday morning. Sessions will be held from 9:40 A.M. Friday until 5:00 P.M., Saturday.

The registration fee is \$15.00 which includes lunch on Friday and Saturday, dinner Friday night. Rooms are available at the Michigan Union: Single, semi-private \$5.00. Single with bath \$7.50. Double with bath, air conditioned, \$12.00 and \$13.00.



Peter Tarapata

## Tarapata on National Jury

Peter Tarapata, A.I.A., Executive Vice President of Tarapata-MacMahon Associates, Inc., Architects, Engineers & Planners of Bloomfield Hills, was selected as a member of the jury of the Annual National Honor Awards Program of the American Institute of Architects, Washington, D.C. Tarapata served with 4 other distinguished architects of national prominence — Philip Johnson, FAIA of New York City, Nathaniel Owings, Jr., FAIA of New York, Willis Mills, AIA of Connecticut and Donald Lutes, AIA of Oregon. Members of the jury are past recipients of top national A.I.A. awards and judged projects submitted from all parts of the U.S.A. for honors to be announced at the annual A.I.A. Convention in Washington, D.C. in June.

Last year, Tarapata received an Award of Merit from the A.I.A. for the design of the Central Plaza Development for Canton, Ohio.

## WALD to Hold "Junk-It" Party

Friday, May 7, the Women's Architectural League of Detroit will hold the final event of the 1964-65 season, a dinner party and auction at the Coach House of Botsford Inn. Feature attractions of the evening will be auctioneers Ernie Dellar and Fred Schoettley. Guests are requested to bring any and all items of art, bric-a-brac and "junk" to donate to the fun. Money will bolster the depleted treasury of the WALD.

Cocktails (dutch treat) at 6:30, dinner following, price per person \$4.50. Please call Fran Dellar, LI 2-3817 for reservations.

## Metropolitan Goals Conference Announced

The Forum for Detroit Area Metropolitan Goals will conduct a conference May 11 on "Goals for Transportation and Regional Development." The conference will stress the role of the citizen in formulating goals for transportation and regional development. Provisions for such citizen involvement in a forthcoming Transportation and Land Use Program for the Detroit Region will be explained.

The forthcoming *Comprehensive Transportation and Land Use Program for the Detroit Region*, to be conducted jointly by major regional planning and governmental organizations, will offer a unique opportunity for citizens to share in drafting guidelines for the development of the metropolitan Detroit area. The stated objective of this project is:

"To formulate workable and desirable forms of regional growth in terms of patterns of land uses, transportation systems and facilities, and environmental health and to seek public decisions on the choice and implementation of the agreed-upon growth program. Such decisions, in order to be politically effective, must involve an understanding of the alternative development patterns, an appreciation of the values of each, and of the relationship of each to the regional goals desired."

A basic principle of this program is the importance of wide citizen par-



ticipation in establishing guidelines for the development of the region, and for a balanced regional transportation system which will support these goals. The program will involve the entire community, to an unprecedented extent, in the development of comprehensive, long-range plans for regional growth.

The Program provides for citizen participation by establishing a Citizens' Assembly, composed of representatives of regional and local non-governmental organizations.

The May 11 conference will lay the groundwork for this Citizens' Assembly. It will provide an opportunity to members of all organizations and

groups in the metropolitan area that are concerned with community welfare to help frame a program of citizen involvement in regional goal setting. I hope that you will be willing to assist the Forum in getting information on the conference to your membership by arranging:

a. A special announcement in organization bulletin, if time permits.

b. Distribution of conference announcements to membership.

Conference Supported by the Metropolitan Fund, Inc., the Conference schedule will be as follows:

9:30 Registration and Coffee

10:00 Welcome and Statement of

#### Conference Objectives

PAUL B. BROWN, Vice President, Harley Ellington, Cowin and Stirton, Inc., Architects and Engineers President, Forum for Detroit Area Metropolitan Goals

10:15 The Citizen's Role in

Formulating Regional Goals

HONORABLE EDMUND S. MUSKIE, Senator from Maine

11:00 The Comprehensive Transportation and Land Use Program for the Detroit Region

PROGRAM STUDY

DIRECTOR

12:30 Luncheon

Remarks

R. J. ALEXANDER, Chairman, Detroit Metropolitan Area Regional Planning Commission. Chairman, Interim Policy Committee for Transportation and Land Use Study.

Provision for Citizen Participation in the Comprehensive Transportation and Land Use Program.

A REPRESENTATIVE OF THE CITY OF DETROIT

Metropolitan Cooperation in Action

WILLIAM L. SLAYTON, Commissioner, Urban Renewal Administration, Housing and Home Finance Agency

2:15 Discussion Meetings

Four concurrent sessions on the Citizen's Role in Formulating Goals for Regional Transportation and Development Patterns:

The Movement of People: Streets, Highways, Busses, Mass Transit Facilities.

The Movement of Goods: Highways, Freeways, Air, Rail and Water.

Local and Regional Development: Homes, Recreation, Community Facilities.

Local and Regional Development: Industry and Commerce

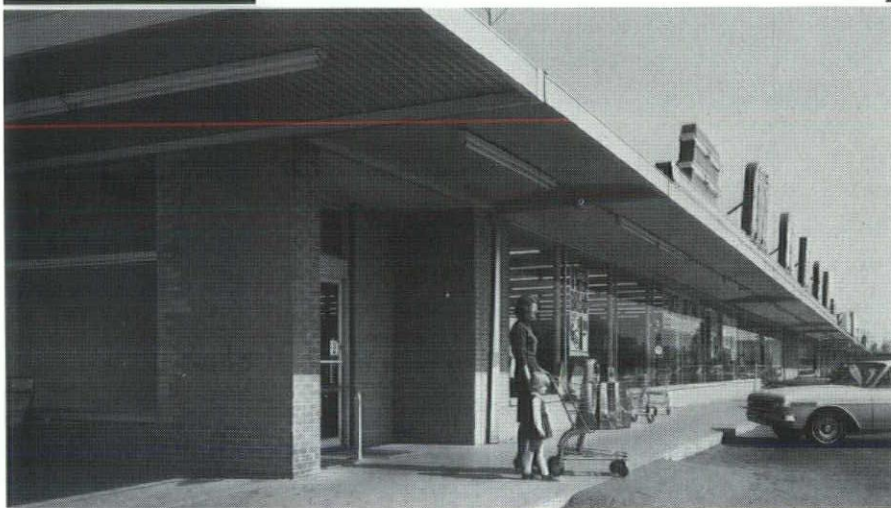
4:00 Closing Session

Summary of Discussion Meeting and Conference Conclusions.

The charge for luncheon and participation in the Conference session will be \$5.00. The Forum will be held at The Veteran's Memorial Building

**STANDARD  
AND CUSTOM  
ENGINEERED  
METAL  
BUILDING  
PRODUCTS**

**McKINLEY MARQUEES**  
**combine design flexibility**  
**with long-lasting protection**



**Sun Shades  
Marquees  
Walkway and  
Dock Covers  
Sun Cornices  
Wall Facing  
Fascia  
Roof Vents**



**Architectural  
Metal  
Specialties**

McKinley Marquees add dramatic new design accents to buildings while furnishing long-lasting, all-weather protection for people and goods. Plain, fluted, or "barreled" ceilings plus a wide variety of fascia offer maximum design flexibility with the economy of "standard" parts.

McKINLEY marquees are custom-engineered of durable, heavy-gauge aluminum. For complete information, call 317 LI 6-1573 collect, or write direct to:

**o. o. McKINLEY co., inc.**

4530 North Keystone Avenue • Indianapolis 5, Indiana

#### **Detroit Allied Arts Committee Revised**

John V. Sheoris, Chairman, has announced the following corrected list of members of the Detroit Chapter Allied Arts Committee:

Yoshizo Machida, David Spalding, Roderick E. Warren, Gerome Chirco, David H. Lee, Montgomery Fera, Clarence E. Roy, Donald Richards, Victor J. Shrem, Shirley A. Jannuzzi and William S. Quinlan.



# 1300 Lafayette East

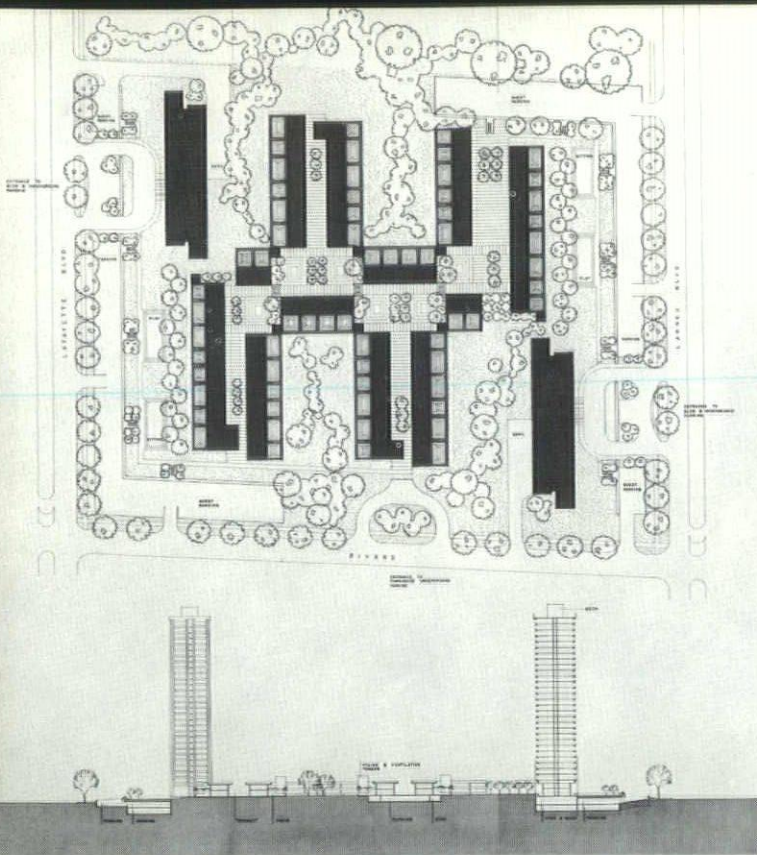


**Birkerts & Straub, Architects**  
**Paul Roger Associates, Structural Consultants**  
**E. G. Siegel Associates, Mechanical Consultants**

## **PROBLEM:**

Site Plan and design this redevelopment apartment project to be built in 3 stages: First highrise building (336 units), Second highrise building (same, but reversed plan) and 70 townhouses as the third stage.





## SITE SOLUTION:

The 13.5 acre site is planned to give unity to the total project without allowing on-site traffic and parking to interrupt pedestrian movement or vision.

The site has been treated with great concern for humanly scaled details: overhanging, protective plant trays: pierced screening walls: lighting pylons, sitting ledges, play and promenade areas, all mostly concrete and integrated into a pleasant base for the buildings. There are play and sitting areas provided on the site, however. For more extensive recreation activities, the adjacent Lafayette Park will be used.

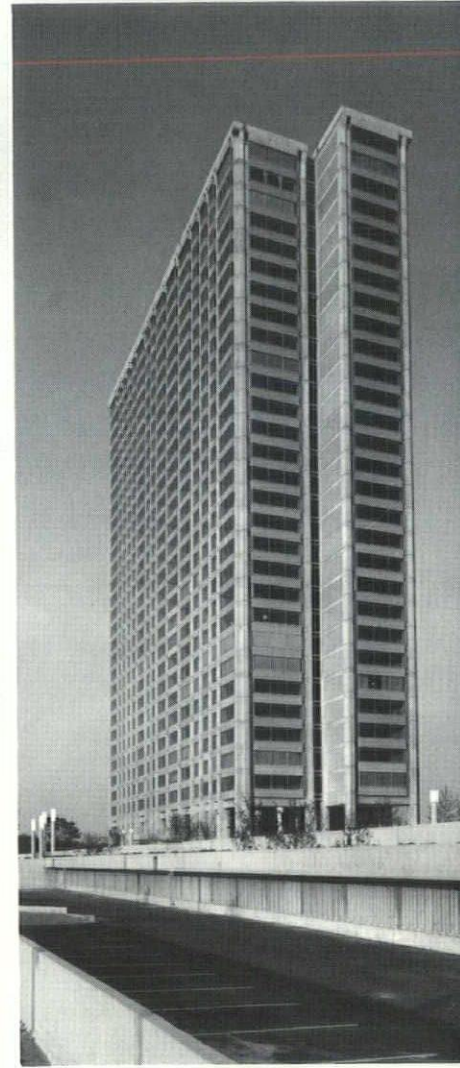
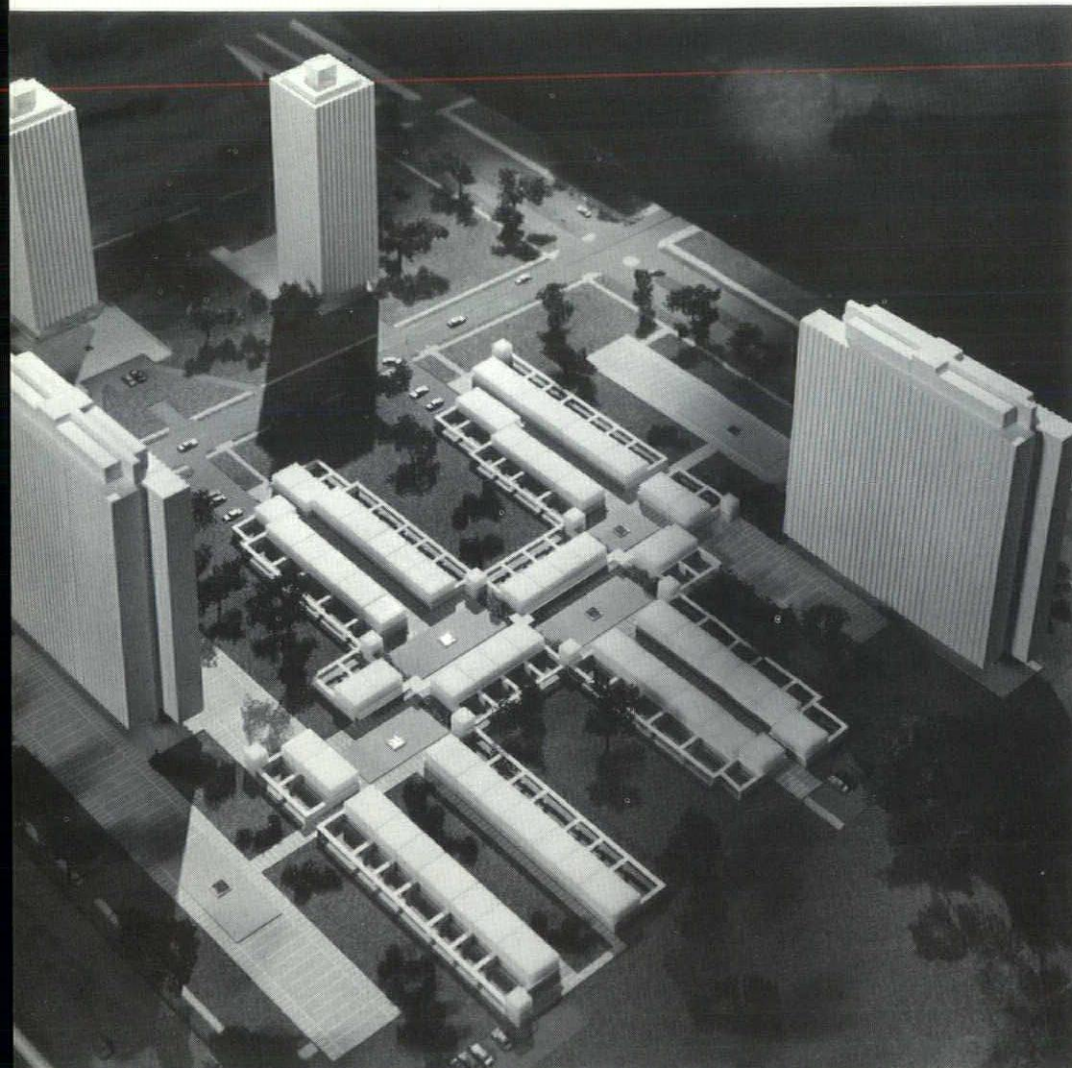
## PARKING AND TRAFFIC SOLUTION:

Of the 110% parking required, 75% is below grade and 35% (FHA requirement) above grade. All surface parking areas are depressed and completely screened from passer-by or townhouse dweller.

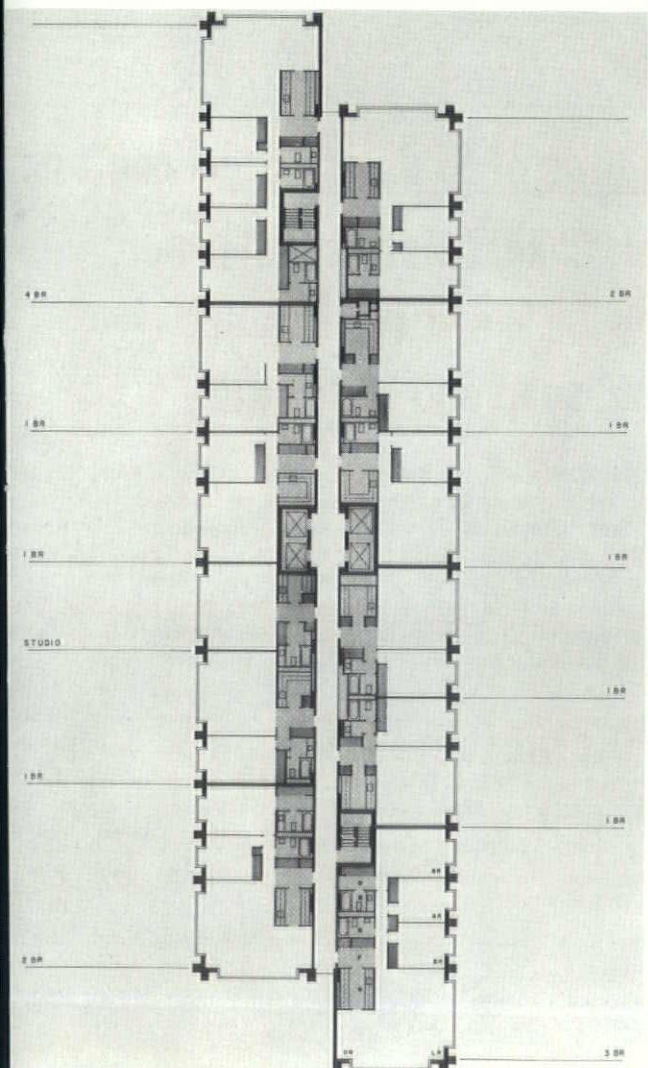
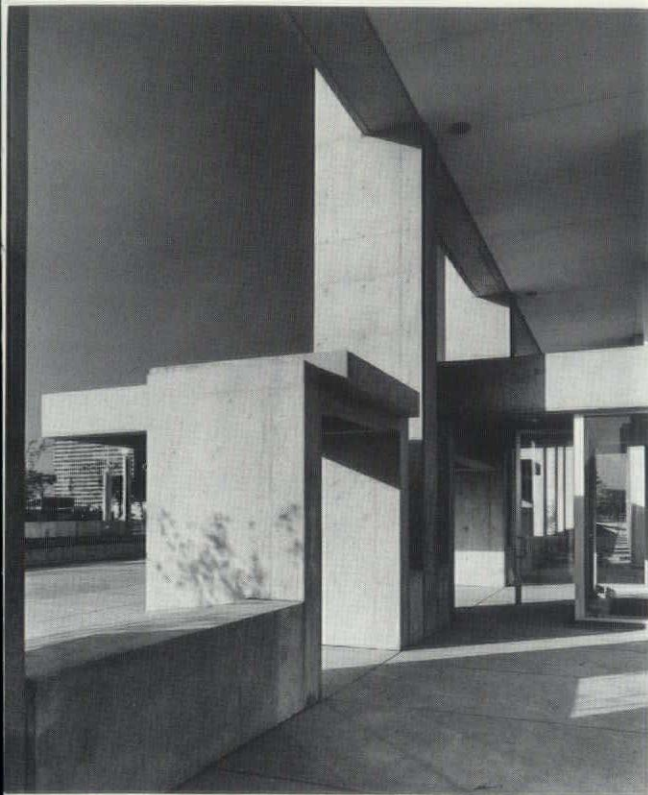
Surface parking is arranged in long narrow strips rather than rectangular parking lots. Entrances to the underground garages are developed on the same axis with building entrance, as respectable automobile and pedestrian ingress arrangements.

Townhouse parking, service vehicle access, and storage for the townhouses is underground.

Townhouse visitors, having parked in the depressed area, will reach townhouses walking in the "streets" and "courts." Tenants and daily service people will take stairs up from the garage to the "streets."







### TOWNHOUSES:

Townhouses were designed with privacy in mind. Large overhangs protect the window areas from overhead view. The units are separated by 2 story high walls with planted pergolas enclosing the paved patios.

Townhouse structure is concrete and brick.

### HIGHRISE BUILDING:

The structure is reinforced concrete. Gray dolomite aggregate is used for all visible concrete surfaces. Precast window bays will have the same aggregate exposed.

The clients desired flexibility in the room sizes, and the desire to have column free rooms, resulted in the unequal bay structural system. The beam section stays the same, only the reinforcing changes from bay to bay.

The tapered, T-shaped, reinforced concrete column spacing is determined by the different room widths. Therefore, there is a different facade on either side of the building. Each room is symmetrical, looking towards the window bay. Interior columns are also placed where they would interfere the least with the planning of the core area.

Floors in this all concrete structure are integral filler block and concrete joist construction. The hollow cores in the filler block are used as air ducts to window outlets from a heating-cooling unit in each apartment. Corridors between the two offset apartment slabs are glazed ends to admit daylight.

The ground and mezzanine floors contain commercial spaces.

The typical apartment floor plan (28 floors) incorporates studio, 1, 2, 3 and 4 bedroom apartments.



# Turner Engineering Company

**DEPENDABLE  
ELECTRICAL  
CONSTRUCTION  
FOR 48 YEARS**

464 Brainard Street  
DETROIT 1, MICHIGAN  
TEmpLe 1-0470

**offering . . .**

a wide range of products and services to architects who demand quality, service and dependability.

- Supersines
- Bronze and Aluminum Tablets
- Cast and Fabricated Letters
- Custom Designed Signs and Symbols
- Traffic Control and Street Signs



Manufacturers .. Distributors

**THE  
SUPERSINE  
COMPANY**

17131 Van Dyke Ave., Detroit 34, Michigan

Associated with Brown and Raisch Co.

TWinbrook 2-6200

For Variety  
and Quality—

# CENTURY BRICK COMPANY

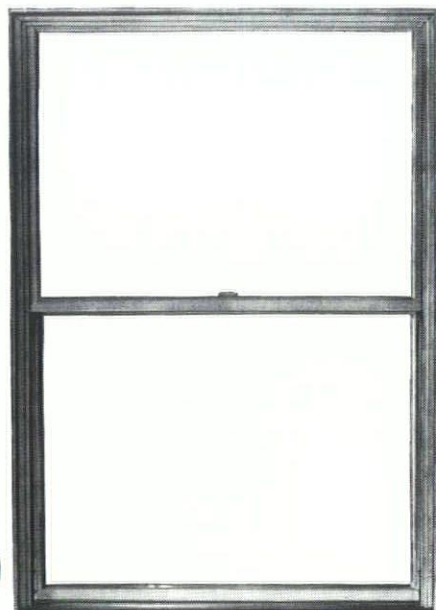
Rely on Years of Experience  
and Service

14910 Linwood Ave.  
Detroit 38, Mich.  
861-8200

**There are 17 things new Freedom Windows of Stainless Steel can't do.**

**Stick, rust, etch, crack, chip, peel, flake, twist, rot, discolor,  
warp, swell, shrink, scratch, bleed, rack or pit. Not ever.**

**If the rain doesn't wash them, soap and water will.**



FREEDOM WINDOWS of Stainless Steel, matte silvery finish, stainless all the way through; single hung, double hung and sliding. Soft reflections of color, light, and shadow in a finish that never changes. Strong; strong as steel; engineered even stronger. Attention to detail as never before in head, jamb, and sash; mullion and muntin; latch, vent, fin, bead, anchor, and fitting. Premium? Yes, indeed. And well worth it. Soap and water will always come cheap, year after year after year.

## MANUFACTURING DIVISION



**REPUBLIC STEEL  
CORPORATION**  
Dept. ML-1078  
Youngstown, Ohio 44505



CALL THE MAN FROM  
MANUFACTURING!

Please send me detailed information on FREEDOM WINDOWS of  
Stainless Steel.

Name \_\_\_\_\_ Title \_\_\_\_\_

Company \_\_\_\_\_

Address \_\_\_\_\_

City \_\_\_\_\_ State \_\_\_\_\_ Zip \_\_\_\_\_



# Construction in Michigan A Michigan Week Story

Michigan ranks among the nation's top States in employment of qualified architects and engineers. There are more than 300 design firms, with staffs totaling some 8,000 employees accounting for a \$65 million payroll annually. Many of the country's leading AE firms are headquartered in Metropolitan Detroit.

Michigan is the home of some of the nation's busiest general contractors, including the largest in industrial construction. The Builders Exchange of Detroit and Michigan reported an average monthly construction work force of 102,500 in 1964, 9 per cent higher than 1963.

The University of Michigan has stimulated the development of private research growth. Many industrial organizations are conducting research in their own facilities on the perimeter of U. of M.'s North Campus, including Bendix, Parke-Davis, Federal-Mogul-Bower Bearing and a growing list of others.

Wayne State University has embarked on the development of its Detroit Medical Center, which will work in harmony with existing hospitals on the site, including Grace, Harper and Women's Hospitals. The master plan is considered a prototype.

Michigan is a leader in the development of community colleges. Among the nationally recognized projects are Grand Valley Community College in Grand Rapids, the Flint Community College and the Dearborn complex. In planning are others of equal rank, such as the \$12 million Oakland Community College, and in Wayne County, where programming is under way for a county-wide network of community colleges.

The Big Three, during the last two years, have expended millions of dollars in Michigan for industrial expansions. Major projects include the Fisher Body stamping plant in Kalamazoo; Chrysler's Sterling Township stamping plant and a gray iron foundry in Detroit; expansion of Chevrolet's foundry and production facilities at Saginaw, Detroit and Flint; administration, research and processing improvements for Cadillac; expansion programs for Oldsmobile at Lansing; GMC Diesel facilities at Grand Rapids and Detroit and Ford's new stamping plant at Woodhaven and their glass expansion and other work at Rouge. During this period, supplier foundry expansion has also arisen, considered by many to be the barometer of our industrial economy.

In the Upper Peninsula, Celotex and Cleveland Cliffs Iron Company, are but two firms sparking that region's

economy. The Michigan Technological University is also on the move, with campus expansion and surge in research.

Since 1961, the Cleveland-Cliffs Iron Company and its partners have invested \$96 million in plants and developments in Marquette County. The Mather Mine in Negaunee — one of the nation's largest underground mines — is being expanded to produce 2,400,000 tons of iron ore by 1966, one-half of which will be pelletized at the new Pioneer Pellet Plant at Eagle Mills which will be in operation before mid-year. Expenditure in connection with the construction of the new pelletizing facilities will approximate \$15 million. This will be the first pellet operation in the world to agglomerate high grade underground ore without the additional concentration as required for jasper type ores.

A survey conducted by Engineering News-Record, and reported in the March 25, 1965 issue, noted an acceleration of Michigan highway development in 1965, calling for an 83% increase in planned contracts over 1964, which will place Michigan ninth in the nation this year.

Michigan has also been commended nationally for its Urban Renewal Programs. At the 1965 Michigan Society of Architects' Convention, Mayor Cavanagh received an award for "Excellence of Community Architecture" for Detroit's progressive Urban Renewal Program, the first such award presented by the American Institute of Architects.

In Grand Rapids, an Urban Renewal Civic Center will include a Courts and Police Building, the first major municipal structure constructed in Grand Rapids in 80 years. A City-County Building and other units are in planning.

Other cities in Michigan have underway Urban Renewal Programs as progressive as Detroit and Grand Rapids. Flint is well along; Grand Haven is now in the planning stage.

Another indicator of Michigan's construction progress is realized by highrise building in large metropolitan areas. In Detroit, the National Bank of Detroit, the Michigan Consolidated Gas Company and the Detroit Bank and Trust building are now realities. There is also the soon to-be-completed twin towers for First Federal Savings. Such activity has generated other downtown developments; such as the new Pontchartrain and Howard Johnson hotels in Detroit.

## OLIVET COLLEGE COLLEGIATE CENTER

MEATHE, KESSLER AND ASSOCIATES, INC.



**A. W. KUTCHE & CO.**  
**A. Z. SHMINA & SONS CO.**

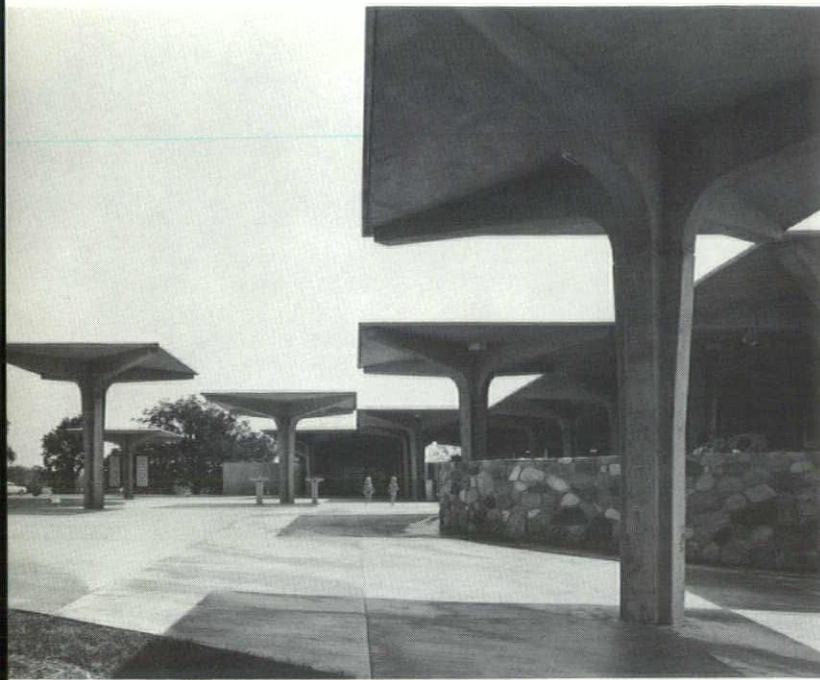
P.O. BOX 4085, NORTHEASTERN STATION, 6275 SCHAEFER ROAD, DEARBORN, MICHIGAN  
LU 4-2350



May, 1965 | 15



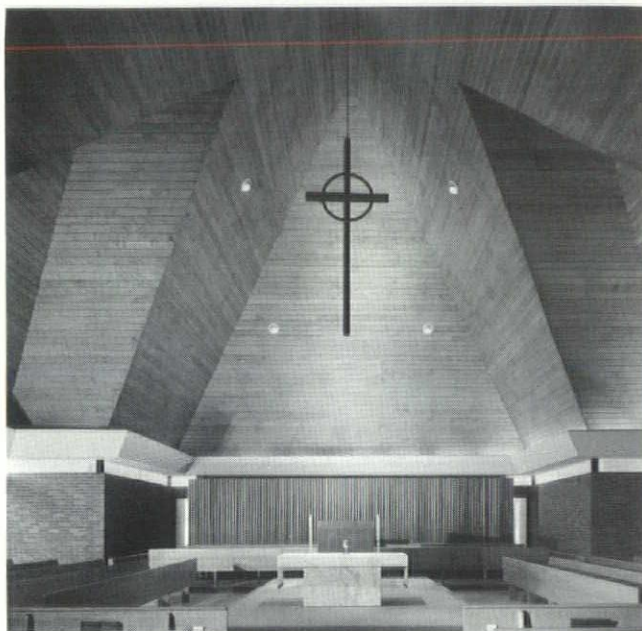
# Michigan Society of Architects



## *FIRST HONOR AWARD:*

**Baypoint Beach Bath House**  
**Stony Creek Metropolitan Park**  
**Huron-Clinton Metropolitan Authority**  
**Wakely-Kushner Associates**

*Jury Comment:* The plan has an excellent special quality related to the natural environment of the site. This is a very disciplined yet playful structure distinctly human in scale. The transition from open sky to part shelter to solid shelter is excellent.



## *AWARD OF MERIT:*

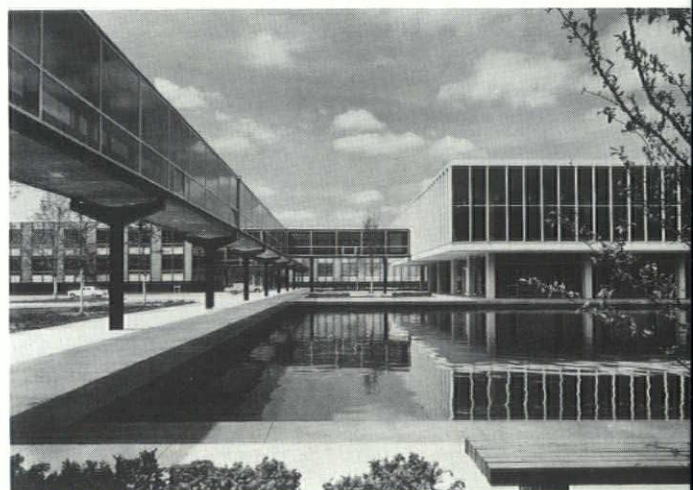
**Chapel of University Presbyterian Church**  
**Rochester, Michigan**  
**Linn Smith Associates, Inc.**

*Jury Comment:* An excellent plan with the resulting form of the building reflecting the plan. Although this is a simple building, the exterior is not so simple — there is a rather forced quality in the window treatment and placement.

## *AWARD OF MERIT:*

**Michigan Bell Northwest Office Center**  
**Smith, Hinchman & Grylls Associates, Inc.**

*Jury Comment:* The distance between buildings seems excessive, regardless of the purpose. Buildings appear to be beautifully executed, technically. Although the site plan is extravagant, there is a quiet elegance about the spaces created.



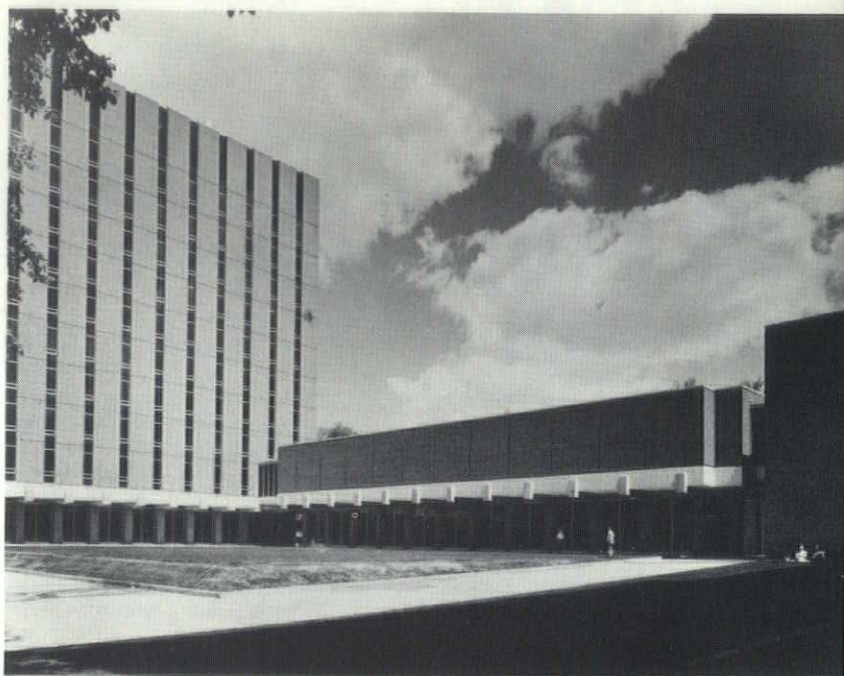


# 1965 Honor Awards Program

## AWARD OF MERIT:

**Physics & Astronomy Building University of Michigan  
Albert Kahn Associated Architects & Engineers, Inc.**

Jury Comment: A very strong building — very functional. Simply executed except for the transition between high and low units. The disposition of the elements on the site is good.



## HONORABLE MENTION:

**Olivet Collegiate Center Olivet College  
Meathe, Kessler & Associates, Inc.**

Jury Comment: The structure appears to be forced although it is carried off by excellence of execution. The jury was unable to judge the rear of the structure.

## HONORABLE MENTION:

**Detroit Bank & Trust Co. Main Office Building  
Harley, Ellington, Cowin & Stirton, Inc.**

Jury Comment: An excellent solution to a difficult site problem. Good typical high-rise floor plan. Transition to top of building is weak. Exterior wall could have been more sophisticated.





# Why **MAPA** stands for Quality Asphalt Paving...

Michigan Asphalt Paving Association members are all prequalified, experienced contractors with the equipment, know-how and skilled personnel to build high quality asphalt paving. MAPA contractors, with years of experience building Michigan's network of highways, understand specifications, know asphalt paving techniques, and, most of all, they stand behind their work.

With MAPA contractors you get guaranteed performance, speedy completion of work—thanks to their specialized knowledge, modern equipment and the skills of highly trained crews. If you're taking bids, insist upon MAPA quality and prequalification.



**MICHIGAN ASPHALT  
PAVING ASSOC. INC.**  
LANSING / 708 Prudden Bldg.  
Area code 517—Phone 482-0111

## Rossetti Named to German Study Tour

Louis Rossetti, FAIA, Vice-President of the Detroit Chapter, A.I.A., will join four other U.S. architects on a study tour of the Federal Republic of Germany from May 31 to June 26. The invitation received from the German Federal Foreign Office in Bonn stated they will meet with government officials and leaders in all fields of business "to gain insight into the cultural, social, and economic situation in Germany."

In addition to a visit to West Berlin, tentative plans call for stops at Munich, Frankfurt, Braunschweig, Rothenburg, Cologne and other cities.

The other members selected for the study tour team are: Craig Ellwood, Los Angeles; Professor John Lawrence of Tulane University; Walter A. Netsch, Skidmore, Owings and Merrill in Chicago, and Professor Paul Marvin Rudolph of Yale University.

Coordinating Rossetti's travel plans are the German Consul Dr. Wolfram Hücke in Detroit and Dr. Sattler, head of the cultural department of the foreign office in Bonn.

## Rozycki Opposes Senate Bill No. 15

Walter J. Rozycki, AIA, Architect, on March 30th sent the following letter to 36 of Michigan's State Senators opposing Senate Bill No. 15 which proposed requiring all Michigan School Districts to use plans prepared by the Superintendent of Public Instruction for the construction of any school building. Architect Rozycki is a brother of Senator Stanley F. Rozycki who introduced the bill. "Dear Senator:

I should like to urge your strong opposition to Senate Bill #15. I am vigorously opposed to the bill and, as an architect, I cannot permit my relationship to Senator Rozycki to be misconstrued as implying otherwise.

Education today is an exciting and dynamic process. Many bold and creative advances are being made to meet the varying needs of a society that would become great. Michigan needs ever improving schools, rather than the low common denominator of mediocre stock solutions.

This bill would require the state superintendent of schools to furnish each school district "...stock plans ...to meet its needs." We do not have stock school sites, stock communities, stock educational programs, or stock teachers. We do not have stock children, with stock minds, from stock environments. If a conscientious effort is made to meet the detailed

## JOHN H. FREEMAN COMPANY

*specification assistance*

- ✓ Distributors
- ✓ Builders' Hardware
- ✓ Contractors' Supplies

3627 CASS at BRAINARD  
DETROIT 1, MICHIGAN  
TEMPLE 1-6760

## MICHIGAN DRILLING CO.

for

- Complete Laboratory Testing
- Diamond Core Drilling
- Soil Test Borings For Foundation and Other Structures



14555 Wyoming Ave.  
Detroit 38, Michigan  
Webster 3-8717



# Acorn Iron Works

INCORPORATED



FABRICATED & ERECTED  
STRUCTURAL STEEL &  
MISCELLANEOUS IRON  
FOR:

MICHIGAN BELL TELEPHONE CO.  
NORTHWEST OFFICE CENTER

ARCHITECTS:

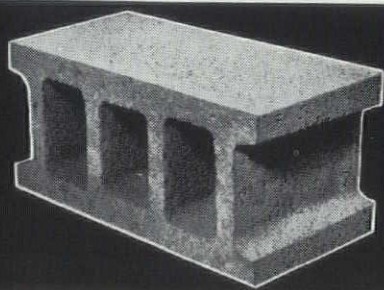
SMITH, HINCHMAN & GRYLLS ASSOC., INC.

DETROIT 28, MICH.

TE 4-9090

MEMBER AMERICAN INSTITUTE  
OF STEEL CONSTRUCTION

seal it. cushion it.  
insulate it.



your Wesco Man has  
the products to help you.

Sales Representatives and Distributors of:

ANTI-HYDRO Emery Aggregates for Floors

B. F. GOODRICH Vinyl Flashings  
and Water Barriers

DOW CORNING Silicone Rubber Sealant

MASTERCRAFT Precast Terrazzo

REVERE Dryseal Copper Flashings

STAIRBUILDERS Prefabricated Stair Forms

WILLIAMS Seals, Gaskets and  
Everlastic Products

**wesco, inc.**

486 W. Eight Mile Road • Hazel Park, Michigan

Telephone: JO 4-6452 & LI 6-2467

Affiliated with Williams Equipment and Supply Co., Inc.

and specific needs of each local school building program it is highly unlikely that any two of these stock plans would be alike. When one considers that the General Motors Corp. alone is offering over 150 different models of passenger cars to meet the needs of the public in the current model year a question is raised as to the intent of the above proposal.

If we are to reach for excellence in education each school building must be as functional an instrument as we can design to carry out a specific educational program. It should also provide as favorable an environment as possible in order to encourage a positive response to the learning process. We will not be helping our children meet the challenge of our ever-changing world by confining their education in unchanging school buildings.

Local control in school matters has long been one of our strongest democratic institutions. Curtailing the authority of local school boards could seriously affect local financial support for our school programs. Support for this bill comes from a small but highly vocal group who have traditionally opposed any improvement in our system of education, and from a handful of building product suppliers who hope to benefit from standardized construction and the limited competition it implies.

This bill is not in the public interest and I would, once again, urge your strongest opposition to it.  
Sincerely,  
Walter J. Rozycki, A.I.A."

## ANNOUNCEMENTS

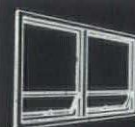
The Adams & Westlake Company, Elkhart, Ind., manufacturer of aluminum and stainless steel windows, curtain walls, and ornamental trim, has acquired Desco Metals Company, Detroit, Mich., maker of aluminum doors and entrances, it was announced by George O. Peckham, president of Adlake, and E. R. Holtz, Desco president.

The transaction joins two companies whose history dates back more than 100 years, Adlake to 1857 and Desco to 1864.

Leonard G. Siegal Associates, Architects is the new name of the former firm of Leonard G. Siegal, Architect, Detroit, Michigan. The announcement was made with the addition of Stanley Aizinas as an associate.

Aizinas is a graduate of the College of Architecture and Design, University of Michigan and is registered as an Architect in Michigan.

## WINDOWS SPEAK FOR THE QUALITY OF THE ENTIRE STRUCTURE



BEAUTYLINE



GLIDER



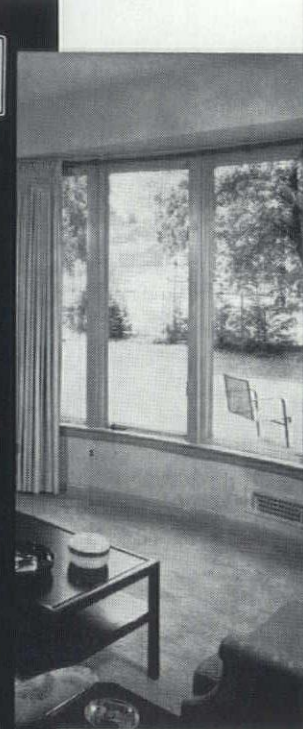
FLEXIVENT



CASEMENT



DOUBLE HUNG



why you  
should specify

## Andersen Windowalls

- "Custom" appearance
- Design flexibility
- General public acceptance and recognition supported by National advertising
- Trouble-free operation—no call backs
- Uniformity of design that guarantees easy and fast installation
- Local representation to assist you with any questions you encounter

Visit our showroom. See the complete display of the many products we distribute.



**KIMBALL & RUSSELL INC.**

WHOLESALE SASH AND DOOR DISTRIBUTORS  
2127 FENKELL AVE. DETROIT 26, MICH. UN. 1-3480



# M. Den Braven

■ Our 52nd Anniversary ■

— SHEET METAL —  
— VENTILATING —  
— AIR CONDITIONING —

9080 Alpine Avenue  
Detroit 4, Michigan  
WE 3-7494-5-6

## CLASSIFIED

Subscriptions to the AIA JOURNAL are available to Professional Associate and Associate members, at the reduced rate of \$2.50 per year, April through June. Send check or money order to Michigan Society of Architects, 28 W. Adams, Detroit 48226; state whether new or renewal.

### Wanted:

Arch. Job Captain

Progressive firm offers permanent position to qualified man with 5 years Job Captain experience.

Long range programs—Liberal employee benefits. Call 884-9500 for interview and appointment Meathe-Kessler & Associates.

Architectural Specifications typed. Experienced. References. Phone Grace Wrubel, 545-7342.

### Wanted:

Experienced architectural draftsman. Small office. Otis Winn, AIA, WO 1-8288.

Openings for junior and senior architectural draftsmen, mechanical and electrical engineers and draftsmen—Smith & Smith, 4268 North Woodward, Royal Oak, Phone JO 6-8724.

## TURNER-BROOKS, INC.

CARPETING

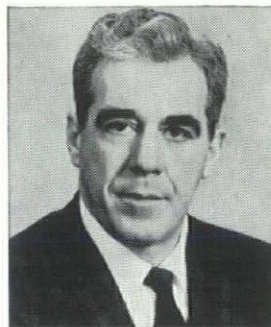
●  
RESILIENT  
FLOOR COVERINGS

AND

ACOUSTICAL MATERIAL

— SINCE 1933 —

9910 DEXTER DETROIT 6, MICH.  
TO 8-2470



## This man can help solve your problems. *Window Problems.*

And it's a wise architect or interior designer who will use him.

Because Richard Repke is the Chicago area representative for our new architectural consulting service. (Actually, he covers Michigan, northern Indiana, eastern Wisconsin, along with Illinois.) He's ready with the answers to practically any problem you have with window treatments and specifications, either exterior or interior.

He can tell you all about our commercial drapery hardware line, Architrac®. About the nine extruded, etched and naturally anodized aluminum tracks for recessed, flush, flanged and bracket mounting that pack draperies back tighter with upright headings. And have ball bearing carriers, concealed supports, and fiberglass center cords. He has complete information, too, on our revolutionary new "Paneltrac" drapery systems.

Our man in Chicago is interested in your window problems. Unburden yourself to him. A letter or phone call will have him at your door. That's Richard M. Repke, Kirsch Company, Room 1306, Merchandise Mart, Chicago, Illinois 60618. Phone 644-5460.

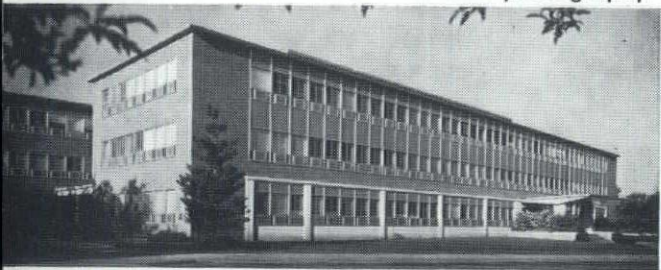
**Kirsch**  
DRAPERY HARDWARE



**Objective:** To enhance and influence favorable design decisions...



**Method:** Utilize the skills of specialists in architectural art and photography



Now entering our second decade of outstanding service to American Architects.

**Architectural Arts**

5332 S. Pennsylvania Ave., Lansing, Michigan  
Phone: 517-882-2408 Division of Grafek Arts, Inc.



The

*Eton Mill*

Architectural Millwork Division

of the

**ERB • RESTRICK**  
*Lumber Company*

Since 1884

Cooperating with the  
Architectural Profession  
Whenever Quality Millwork  
is Required

Birmingham, Mich. MI 4-5300

Member  
Architectural Woodwork Institute

## *Did You Know...*

*That R. I. P. F. Roofing, Sheet Metal & Waterproofing Contractors  
in Michigan Issue Free Two-Year Personal Guarantees.*



*This Two-Year Guarantee Is Twice as Long as the  
Usual Guarantee Given on a Completed Building.*

*R. I. P. F. Contractors are Dependable • Qualified • Experienced*



### *Roofing Industry Promotion Fund*

Burleigh Grime  
Executive Secretary

8469 E. Jefferson Ave.  
Detroit 14, Mich.

Area Code 313  
822-0700





Chuck Andres (left) accepts Stereophonic phonograph and records from Harry Jablon, president, Valley Window Sales Co., awarded at MSA Convention

### Fales Designated Planning Consultant

Dr. Lloyd E. Fales has been designated School Plant Planning Consultant for the Department of Public Education of the State of Michigan, according to a recent announcement by Dr. Alexander J. Kloster, Deputy Superintendent.

In the future, all inquiries or material relative to the school plant field should be directed to Dr. Lloyd E. Fales, Consultant, Administrative Services Division, Department of Public Information, according to the announcement.

### Consumers Power Hosts Flint Area Chapter

Corporate and Associate members of the Flint Area Chapter of The American Institute of Architects were the guests of the Consumers Power Company of Flint for cocktails and dinner, Monday evening, April 12, 1965, at the Country Squire.

Consumers' Engineers informed the

Flint Area Chapter members of many new policies, rate arrangements and applications for the services of electric and gas.

Many subdivisions are now being planned for underground services and distribution. Consumers Power has provided this type of service at \$1.25 per front foot of the lot, plus \$1.35 per foot of wire from the service junction to the house meter. In an effort to encourage the use of electric heat in housing developments, Consumers will install the underground type of service at no charge to the developer or owner where electric heat is installed.

Consumers Power also has a plan for the customer where the regular overhead distribution and service is installed, to contribute \$100.00 toward the cost of insulation, if the owner or developer will install electric heat.

The gas division has increased their efforts to arrange rate classifications to suit demands of the installation. Consumers Power is providing additional engineering to determine initial service line sizes and pressures for projected demands.



### ADVERTISERS INDEX

Acorn Iron Works	19
American Aggregates Corp.	8
Architectural Arts	21
Belden Brick Co.	20
Century Brick Co.	14
Consumers Power Co.	30
Darin & Armstrong, Inc.	22
Den Braven, M.	20
Detroit Edison Co.	2
Dykstra, R. Co.	24
Erb-Restrick Lumber Co.	21
Freeman, John H. Co.	18
Kimball & Russell, Inc.	19
Kirsh Company, Inc.	20
Lenawee Peerless, Inc.	22
Levy, Edward C. Co.	40
McKinley, O. O. Co., Inc.	10
Michigan Asphalt Paving Assn., Inc.	18
Michigan Consolidated Gas Co.	4
Michigan Drilling Company	18
Portland Cement Association	6
Power, J. M. Co.	24
Republic Steel Corp.	14
Roofing Industry Promotion Fund	21
Shmina, A. Z. & Sons	7
Shmina, A. Z. & Sons —	15
Kutsche, A. W. & Co.	14
Supersine Co.	20
Turner-Brooks, Inc.	14
Turner Engineering Co.	14
United Glazed Products	3
(Michigan) Inc.	23
United States Steel Corp.	19
Wesco, Inc.	19

# WAL-LOK NOW IN 3 GRADES!

## STANDARD

No. 9 ga. Siderods.  
No. 10 ga. GALVANIZED Crossrods

## SUPERSTANDARD

No. 8 ga. Siderods.  
No. 10 ga. GALVANIZED Crossrods

## EXTRA HEAVY

3/16" Siderods.  
No. 9 ga. GALVANIZED Crossrods

No other reinforcing has all these features—  
found on all three grades of WAL-LOK—WAL-LOK is double deformed for maximum bond • The tensile strength of WAL-LOK is retained after welding • WAL-LOK has rectangular de- sign for stronger welds and more steel in the mortar • WAL-LOK Crossrods project for 4 extra strong mortar locks at each weld • Crossrods hold WAL-LOK up off the blocks for complete embedment in the mortar. Write for free brochure today.

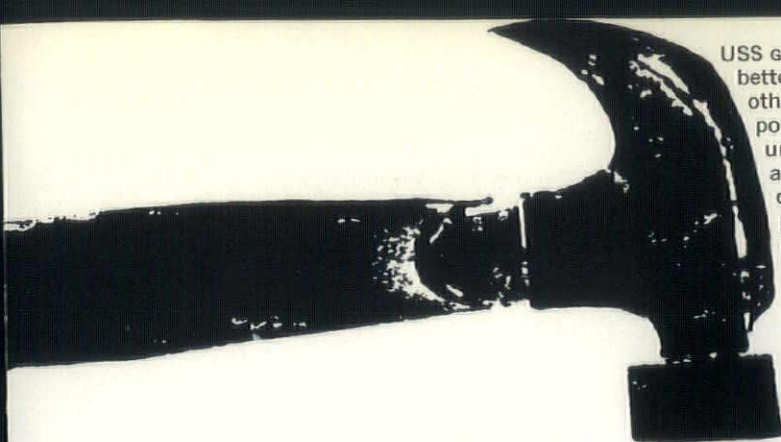


P. O. BOX 516

LENAWEE  
PEERLESS,  
INC.

ADRIAN, MICHIGAN

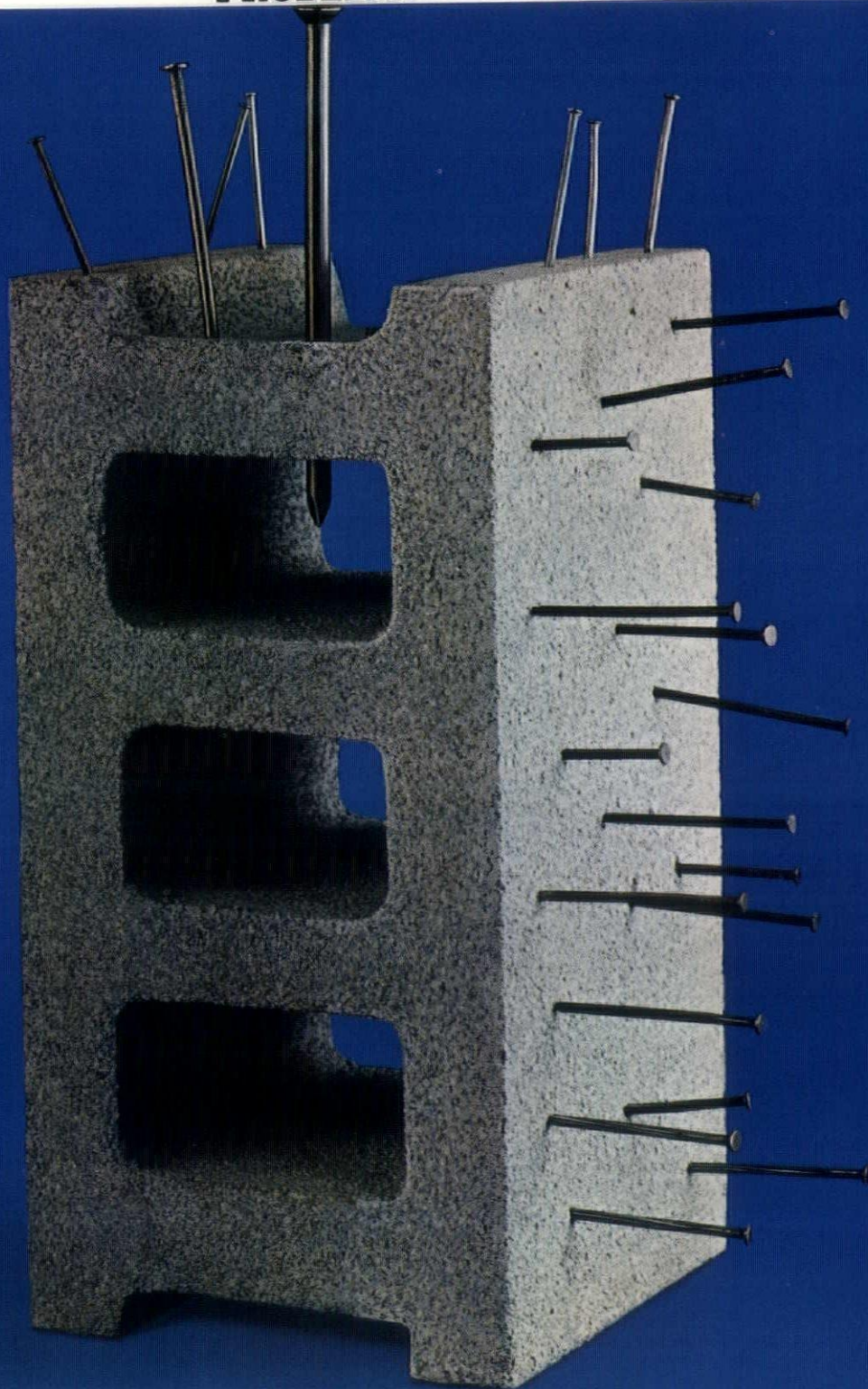




USS GARYLITE EXPANDED SLAG lightweight aggregate gives concrete blocks better nailability. Independent laboratory tests which included five other aggregates show GARYLITE slag also provides better nail-holding power. In buildings, special fastening devices and nailing strips are unnecessary because baseboards and trim can be nailed directly—and easily—into GARYLITE concrete. And masonry units of USS GARYLITE concrete weigh less, are more fire resistant, have more pleasing color and texture. They are compatible with other building materials, provide better sound absorption and thermal insulation. For more information on the best coarse or fine lightweight aggregate—USS GARYLITE Expanded Slag—call or write United States Steel, Raw Materials Sales, at any of the following offices: 208 South LaSalle Street, Chicago, Illinois 60690 (Area Code 312) 236-9200; 209 Broadway Bldg., Lorain, Ohio 44052 (Area Code 216) 245-6897 525 William Penn Place, Pittsburgh, Pa. 15230 (Area Code 412) 391-2345. *USS and GARYLITE are registered trademarks.*

**IS  
NAILING  
YOUR  
PROBLEM?**

**United States Steel**





## CALENDAR

- May 7 Wald Dinner Party and Auction — Botsford Inn 6:30 p.m.
- 11 Detroit Area Metropolitan Goals Forum — Veteran's Memorial Building 9:30 a.m. to 5:00 p.m.
- 12 Mid-Michigan Chapter—Tarpoff's—12:00 M—"Buildings and State Laws"—John Baker
- 13 thru 14—Michigan Society of Planning Officials — Annual Conference — Jack Tar Hotel — Lansing
- 14 thru 15—M.S.A.—Detroit Chapter—Seminar/Workshop Michigan Union — Ann Arbor. "Construction Documents — Today and Tomorrow"
- June 4 MSA Board Meeting — Traverse City
- 6 thru 12 AIA - ASCA Teachers Seminar — Cranbrook Academy, Bloomfield Hills.
- 14 thru 18 — AIA National Convention and XI Pan-American Congress—Sheraton Park Hotel, Washington, D. C.
- 21 thru 25— Special Summer Program—M.I.T. Cambridge, Mass. "Plastics in Architecture."
- July 15 and 16 — Conference on "Liturgy and Church Architecture"—Sacred Heart Seminary—2701 W. Chicago Boulevard — Detroit — Sponsored by School of Architecture, U. of D. and Archdiocese of Detroit.
- 22 thru 24 — National conference on Higher Education Facilities—University of Omaha, Omaha, Nebraska.
- August 5 thru 7 — MSA 22nd Annual Mid-Summer Conference—Grand Hotel—Mackinac Island.

## J. m. power & company

*Sales and Service  
to the Building Industry*

MICHIGAN STRUCTURAL CONCRETE PANELS

PRETEST RESINOUS CONCRETE PANELS

RAPIDEX — DOXPLANK

FULGET — MARBLE & GRANITE TILES

FISHER-INSLEY MONUMENTAL SASH

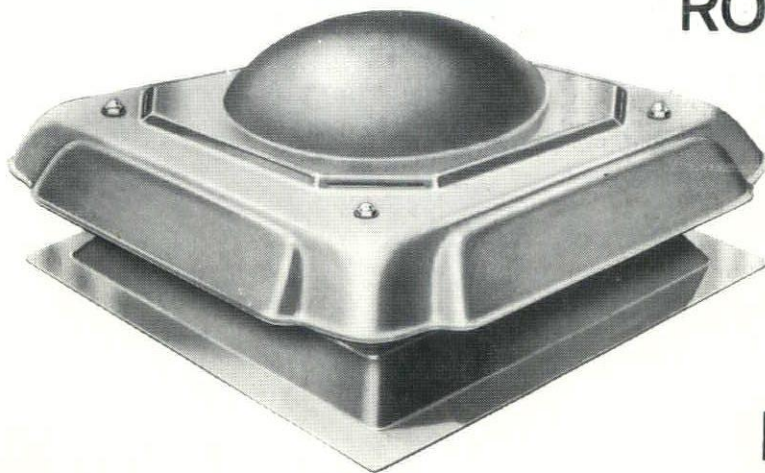
FEDERAL CEMENT ROOF TILE



WO 2-2940

BOOK TOWER • DETROIT, MICHIGAN 48226

For that unobtrusive look...  
for the lowest profile in  
ROOF EXHAUSTERS



insist on the new

**UNITARY  
VINYL (PVDC)  
SERIES**

by

**JENN-AIR**

**R. DYKSTRA & COMPANY**

DETROIT - 6400 Mt. Elliott Avenue, (313) 921-5630

GRAND RAPIDS - 822 Cherry St., S.E. - (616) 454-7097





## The Blueprint

Blueprints are basic and essential to both the architectural profession and the utility industry.

The architect and Consumers Power Company engineers share many common interests and by working together they can achieve greater efficiency in electric and gas service planning.

As a combination utility, we know the characteristic requirements and adaptability of both types of energy.

Our special representatives throughout our service area will be pleased to be of assistance.

Call or write G. C. Way, Consumers Power Company, General Office, 212 W. Michigan Avenue, Jackson, Michigan, Area Code 517 788-0809.



*Electric and Natural Gas Service in Outstate Michigan*



*slag  
aggregate  
means  
material  
benefits!*

*in concrete masonry units—  
physical properties/unsurpassed  
design possibilities/unlimited*

Masonry units made from expanded slag aggregate give you a world of advantageous characteristics. High on the list is its light weight that makes it easier to handle and moves masonry work faster. Slag aggregates insure highest bond and shear strengths so masonry units are highly resistant to shock in transportation or in application.

Slag advantages go on and on: excellent sound absorbing and heat-insulating properties; nailable and nailholding; attractive natural color and texture; high fire resistance and it's even more economical than other lightweight concrete aggregates.

And there's more—maximum design freedom that extends the inherent beauty of slag-masonry units into new areas of functional or decorative application.

Write for informative literature on how Slag can materially benefit you . . . your projects.

**EDW. C. LEVY COMPANY**

PIONEERS IN  
QUALITY  
AGGREGATES



8800 DIX AVENUE  
DETROIT, MICH. 48209  
TEL.: (313) 843-7200

1735 New York Avenue, N.W.  
Washington 6, D. C.

DETROIT, MICH.