

AMERICAN INSTITUTE

FEB 16 1965

LIBRARY



BULLETIN

michigan society of architects february 1965 50¢

If you are a

CONSULTING ENGINEER	FACILITIES ENGINEER
ARCHITECT	CONTRACTOR
SCHOOL ADMINISTRATOR	HOSPITAL ADMINISTRATOR
BUILDING OWNER OR MANAGER	

you will discover

a wealth of new ideas in the latest products and services for the efficient and economical design and construction of heavy buildings

when you visit the

INDUSTRIAL • INSTITUTIONAL • COMMERCIAL

I.I.C. BUILDING EXPOSITION

AND CONFERENCE*

the first national congress of the heavy building industry

COBO HALL, DETROIT, MARCH 8-11, 1965

*** THE CONFERENCE IS SPONSORED BY THE
AMERICAN INSTITUTE OF CONSULTING ENGINEERS**

If you are interested in new and proven ideas on the techniques and methods of planning a major building project, if you are concerned with the important changes taking place in building technology, plan now to visit the concurrent Building Conference, sponsored by the American Institute of Consulting Engineers. For complete information on the exposition and conference, write CLAPP & POLIAK, INC., 341 Madison Avenue, New York, New York 10017. Telephone: MUrray Hill 4-3432. Area Code 212.

BULLETIN

michigan society of architects february 1965

THE MONTHLY BULLETIN
IS PUBLISHED FOR THE
MICHIGAN SOCIETY OF
ARCHITECTS TO ADVANCE
THE PROFESSION OF
ARCHITECTURE IN THE
STATE OF MICHIGAN.

EDITOR—
James B. Hughes, AIA
ASSISTANT EDITOR—
Ann Stacy
ART DIRECTOR—
Edward Hutcheson
GRAPHIC ARTS
CONSULTANT—
Gary R. Grout
Ann Arbor Press
ADVERTISING
DIRECTOR—
Charles O. Irvine
CHAPTER ASSOCIATE
EDITORS
Detroit . . .
Wallace Cleland, AIA
Flint Area . . .
Dale A. Suomela, AIA
Grand Valley . . .
Jay H. Volkers, AIA
Huron Valley . . .
Henry S. Kowalewski, AIA
Mid-Michigan . . .
John E. Crouse, AIA
Northern Michigan . . .
Richard H. Greenless, AIA
Saginaw Valley . . .
William Stenglein, AIA
Western Michigan . . .
Donald W. Stearns, AIA
MSA BOARD LIAISON . . .
George W. Sprau, AIA

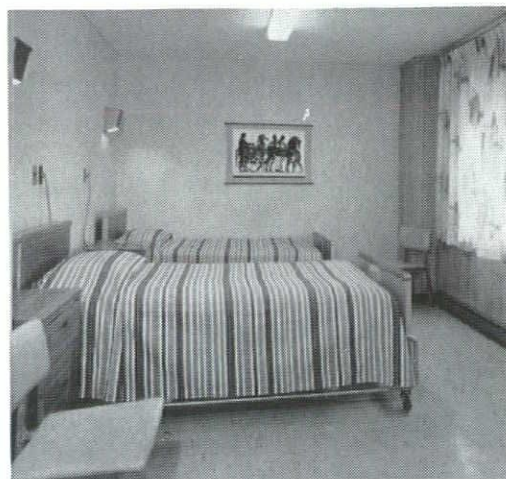
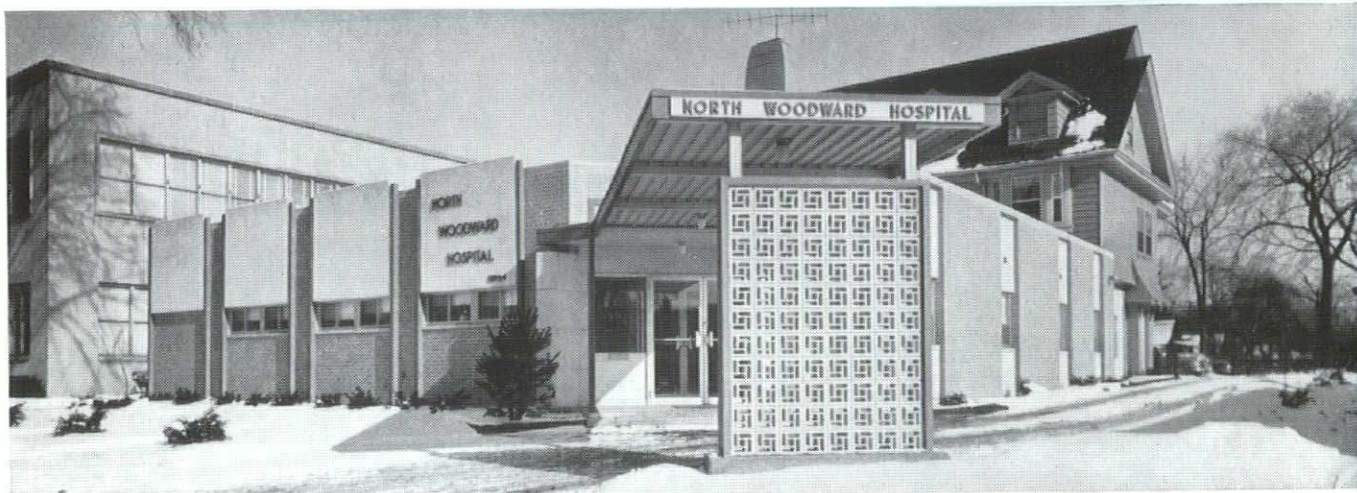
Monthly Bulletin, Michigan Society of Architects, the official publication of the Society; all Michigan Chapters of the American Institute of Architects; Women's Architectural League of Detroit (WALD); Producers Council, Inc., Michigan Chapter; Builders & Traders Exchanges of Detroit, Grand Rapids and Lansing is published monthly by the Michigan Architectural Foundation; Editorial and Advertising Offices—28 West Adams, Detroit 26, Michigan, phone: 965-4100.

Volume 40 No. 2

- 5 News
- 9 Focus on the Future—Wayne State University
- 17 MSA Convention
- 20 Detroit Chapter Committees
- 22 Chapter News
- 23 Advertisers' Index
- 24 Roto
- 26 MSA-SMEAD Draftsmen's Competition

Cover Old Central High School—
now Old Main—Wayne State University
(Burton Historical Collection
photo—taken 1910.)

Monthly Bulletin, Michigan Society of Architects, is published monthly at 28 West Adams, Detroit 26, Michigan. Entered as second class matter January 15, 1946 at the Post Office at Detroit, Michigan under Act of March 3, 1879. Subscription price, \$4.00 per year (members \$2.00). 50 cents per copy.



HOW ELECTRIC HEAT HELPED NORTH WOODWARD HOSPITAL CUT COST OF NEW ADDITION:

When the directors of North Woodward Hospital in Highland Park, Michigan, added a new hospital wing, they chose electric heat. In doing so, they not only saved \$7,000 in construction costs but got the extra bonus of better-than-average sound insulation—an important factor on a busy highway.

The heating plant in the original building was inadequate to provide for the new patient facilities. By adding electric heat, there was no need to install a new central heating plant—no need for a boiler room, stacks or elaborate controls.

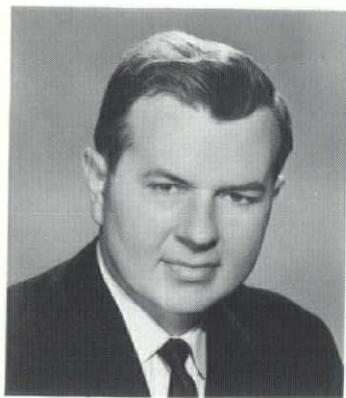
And since each room's temperature is individually con-

trolled, rooms not in use need not be heated. "Bills are entirely within estimates made by Detroit Edison," reports the hospital management. Because electric heat is flameless, it's clean, quiet and trouble-free, requiring little or no maintenance.

Before you select a heating system for your new building or addition or existing building, consult an Edison Electric Heating Specialist. He'll be happy to discuss with you, your architect, engineer or electrical contractor how *you* can save on construction and maintenance costs. In Detroit, just call WO 2-2100, ext. 2223. Elsewhere call your Edison office. **EDISON**

Jarratt Joins SH&G

William R. Jarratt, AIA, has joined the architectural, engineering and planning firm of Smith, Hinchman and Grylls Associates, Inc., it was announced by Robert F. Hastings, president. Jarratt will serve as chief architect in charge of the architectural and specification department.



W. R. Jarratt

Formerly a partner in Pirscher and Jarratt, architects, Jarratt received the degree of Bachelor of Architecture from University of Michigan in 1950. He has been associated with Albert Kahn, SHG, and Minoru Yamasaki & Associates, with whom he was treasurer and a member of the Board of Directors before forming his own partnership.

He has been a registered architect for 10 years, is a member of the American Institute of Architects; was treasurer in 1963 and 1964, and is now secretary of the Detroit chapter. He is also a member of the Michigan Society of Architects and Michigan Association of the Professions.

Williams Joins Sarvis Firm

Lewis J. Sarvis, Architect, Battle Creek, has announced that George N. Williams became associated with his firm effective January 1, 1965. Other members of the firm are Gordon A. Belson and R. A. Vanderploeg.

Williams a 1950 graduate of the University of Michigan School of Architecture, has been associated with local architectural offices since that time. For the past eight years he has

been a principal in the firm of Haughey, Black and Williams.

He is a member of the American Institute of Architects, the Michigan Society of Architects, and past secretary of the Western Michigan chapter of the American Institute of Architects. He is the chairman of the Battle Creek Building Code Board of Appeals, a director of the University of Michigan Alumni Club, and a member of Rotary International. He served in the Army during World War II in the European theatre of operations.

Detroit Air Pollution Control Code Amended

The Bureau of Air Pollution Control, Department of Buildings and Safety Engineering, City of Detroit, has announced a recent amendment to its Code.

This amendment establishes appreciably lower particulate emission limitations for coal-fired boilers, incinerators, ferrous foundry cupolas and steel making furnaces than were previously in effect. Work is underway to establish more realistic limitations for other processes.

Since the Ordinance affects the design of and space requirements for equipment, architects are advised to obtain copies of the amended Code.

Producers Council Establishes Satellite in Grand Rapids

Detroit Chapter of the Producers' Council has founded a Satellite group in the city of Grand Rapids, according to Joe Panella, head of Detroit's newly-formed Satellite Affiliate Committee (SAC). The Grand Rapids affiliate, first to be established by the Detroit PC, will be headed by Don Thomas of U.S. Ceramic Tile Co. Meetings of the Satellite group will be held during the months of January, March and June 1965.

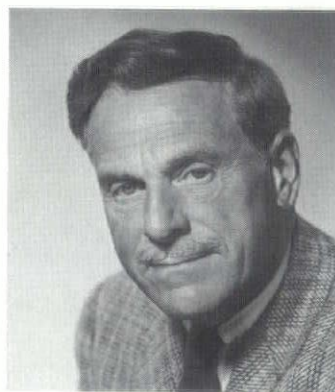
Detroit's SAC, headed by Panella, is engaged in a state-wide program to organize affiliate chapters in cities too small to support full-fledged PC chapters. These affiliate chapters—to be known as Satellites—will be established in Michigan cities where architect-engineer audience potential appears sufficient to support a minimum of two meetings per year.

Affiliate groups of this type will allow Producers' Council to better organize its programs within the state of Michigan and will provide "starting points" for the establishment of future Chapters of Producers' Council. For example, Grand Rapids may be considered as site for a new PC Chapter if attendance and participation in meetings of the Satellite group lives up to expectations.

Detroit is the first chapter of Producers' Council to form a Satellite Affiliate Committee and to sponsor the formation of affiliate groups in other cities. The committee and its objectives have been endorsed by the National Producers' Council which is now recommending adoption of the practice by other PC Chapters throughout the country.

Frantz Gives Traditional Toast to the President

Robert B. Frantz, FAIA, gave the traditional toast to the President of the United States at the Saginaw Club's annual New Year's Day gathering. Approximately 300 members, their sons, grandsons and guests attended the ceremony which has been held for the past 75 years.



R. B. Frantz

Acknowledging that there is trouble in the "family at home here in America and that it also nags at all the rest of the civilized world, Frantz commented that there is still hope for peace and Christian tranquility as today's unrest and uncertainty is mea-

Why **MAPA** stands for Quality Asphalt Paving...

Michigan Asphalt Paving Association members are all prequalified, experienced contractors with the equipment, know-how and skilled personnel to build high quality asphalt paving. MAPA contractors, with years of experience building Michigan's network of highways, understand specifications, know asphalt paving techniques, and, most of all, they stand behind their work.

With MAPA contractors you get guaranteed performance, speedy completion of work — thanks to their specialized knowledge, modern equipment and the skills of highly trained crews. If you're taking bids, insist upon MAPA quality and prequalification.



**MICHIGAN ASPHALT
PAVING ASSOC. INC.**
LANSING / 708 Prudden Bldg.
Area code 517—Phone 482-0111

sured against others in the pages of history.

Frantz said in part, "We have so immeasurably much to be thankful for. It is especially heartening, nationally and locally, as means are found and diverted for them, to find that towns and cities are insisting definitely on an improvement of environment, and are demanding that the forces which create blight and ugliness must be stopped. Although we have a highly industrialized system, the best in the world, all of us—citizens, business men, government leaders, planners all—have been involved in making our cities what they are today and must help to change them for the better.

"Constructive criticism, may it always be 'in order', can only too validly be directed against an environment of congestion, of racking noise, of dirt and disfigurement and environment in which human beings simply cannot thrive."

MSA Honor Awards Entries To Be Judged in Chicago

Forty-nine entries from twenty-six firms in Michigan will be considered for awards in MSA's first annual honors program by a jury of three prominent Chicago architects in their home city on February 10th.

Serving as jurors will be Edward D. Dart of Edward D. Dart & Company, Bruce J. Graham, partner in the Chicago office of Skidmore, Owings & Merrill, and George Fred Keck of the office of George Fred Keck and William Keck. Jurors were recommended by James S. Hornbeck, Senior Editor, Architectural Record.

Entries will be taken to Chicago for the judgment by James B. Hughes, MSA Executive Director. Winners will be advised immediately following the judgment so that display boards may be prepared.

Projects receiving awards will be exhibited at the MSA Convention, March 17-19. Awards will be presented to the architects and the owners of the buildings at the Annual Awards Dinner, March 18.

A.C.I. to Hear Hunt

T. W. Hunt, Portland Cement Association specialist in precast concrete panels and decorative concrete, will be the featured speaker at the February 10th meeting of the Michigan Chapter, American Concrete Institute.

The meeting will be held at Carson's Cafe, Woodward at Burroughs, with luncheon scheduled for 12:15 PM. The program will be concluded at 1:30 with a question and answer period to follow

M. Den Braven

Our 52nd Anniversary

— SHEET METAL —
— VENTILATING —
— AIR CONDITIONING —

9080 Alpine Avenue
Detroit 4, Michigan
WE 3-7494-5-6

For the Unusual
and the Usual—

CENTURY BRICK COMPANY

Rely on Years of Experience
and Service

14910 Linwood Ave.
Detroit 38, Mich.
861-8200

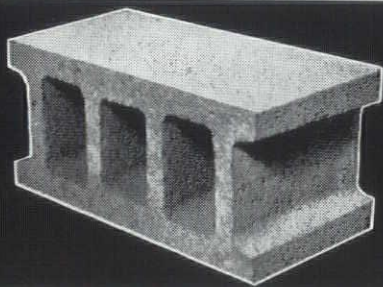
Turner Engineering Company

**DEPENDABLE
ELECTRICAL
CONSTRUCTION
FOR 48 YEARS**



464 Brainard Street
DETROIT 1, MICHIGAN
TEmpLe 1-0470

**seal it. cushion it.
insulate it.**



**your Wesco Man has
the products to help you.**

Sales Representatives and Distributors of:

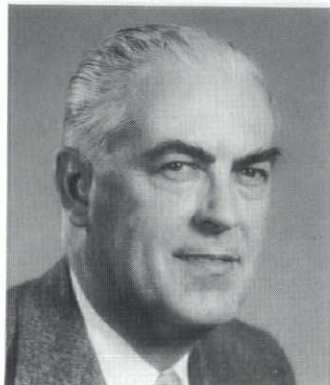
ANTI-HYDRO Emery Aggregates for Floors
B. F. GOODRICH Vinyl Flashings
and Water Barriers
DOW CORNING Silicone Rubber Sealant
MASTERCRAFT Precast Terrazzo
REVERE Dryseal Copper Flashings
STAIRBUILDERS Prefabricated Stair Forms
WILLIAMS Seals, Gaskets and
Everlastic Products

wesco, inc.

486 W. Eight Mile Road • Hazel Park, Michigan
Telephone: JO 4-6452 & LI 6-2467
Affiliated with Williams Equipment and Supply Co., Inc.

for those who care to remain.

Hunt, who is a C. E. graduate of the Missouri School of Mines, is a Fellow of the American Society of Civil Engineers and a member of the A.C.I. He is registered as an engineer in Maryland and Missouri. His past experience was with the New York State Highway Department and the Corps of Engineers before joining P.C.A. His subject will be "Exposed Finishes of Cast in Place Concrete."



T. W. Hunt

Elastomer Technology Conference Scheduled

Irving N. Einhorn, Adjunct Professor of Chemical Engineering, Wayne State University, has announced the First Annual Conference on Elastomer Technology to be held March 10-11 at the McGregor Memorial Conference Center, W.S.U. The Conference will be sponsored jointly by the Elasto-Plastics Division of the Society of the Plastics Industry, Inc., the Institute for Applied Chemistry and Physics and the College of Engineering of Wayne State University.

Of particular interest to architects will be the Thursday morning session on Elastomeric Sealants, moderated by Prof. W. Oberdick, Department of Architecture, U. of M. Charles M. Peterson, Harry Peterson Co., will present case studies of sealants.

NAARCO Expands Production Facility

A 75% increase in plant size, a new name for the product and the corporation, and a constantly expanding variety of products for the architect are all part of the sweeping changes taking place at North American Aluminum Corporation of Parchment, Michigan.

Robert L. Rizzardi, Marketing Manager for the firm, said, "The change of product name from Modu-Wall to NAARCO results from the broadening

**SEE
WHAT'S
NEW**

**ANDERSEN (WOOD) GLIDING DOOR
6' HIGH ANDERSEN CASEMENTS**



KIMBALL & RUSSELL INC.
WHOLESALE SASH AND DOOR DISTRIBUTORS
2127 FENKELL AVE. DETROIT 36, MICH. UN. 1-3460

Visit Our Booth: No. 65

DETROIT BUILDERS' SHOW • COBO HALL • FEB. 19-28

product line we are now producing. The line currently includes curtainwall as well as windows, interior entry units, fascia, solar shielding devices, and louvered panels. Other items will inevitably be added and, since the former name was somewhat limiting, it seemed best to make the name change now."

"Sales volume as well as the broader product line have also made it imperative that we expand plant capacity," according to Mr. Rizzardi. "Steel is now going into place for the addition of 40,000 square feet to the existing facility. This will provide a production area of 92,000 square feet.

Ground Broken for Kennedy Square Garage

Mayor Jerome Cavanagh and other Detroit city officials participated in groundbreaking ceremonies on January 14th for the Kennedy Square (Old City Hall site) underground garage.

The ceremony marking the start of construction of the garage brought to an end the long and difficult problem of the disposition of the Old City Hall and the treatment of its site.

When completed, the garage will provide parking for 523 cars. It is being built for the Municipal Parking Authority.

ANNOUNCEMENTS

Thomas B. Browne, AIA, has opened an architectural office at "Harbor Center", proposed new professional and medical center at Norton Avenue by Seaway Drive, Muskegon. His current mailing address is 3424 Temple Street, Muskegon; phone 616-733-2628.

Warren E. Poole, AIA, has been named Assistant University Architect for the University of Michigan and is now located in Ann Arbor.

Adler/Schnee has moved to a new location at 240 East Grand River on Harmonie Park, after sixteen years in Detroit's northwest section. Store hours are from 10 AM - 6 PM Monday through Saturday; open Monday and Wednesday till 9 PM.

Davis Iron Works Inc. has moved its plant and offices to larger facilities at 21800 W. Eight Mile Road, Southfield, Michigan 48076. Telephone: 353-3370.

Affiliated Incinerator Corp. has announced its move to a new location, 12700 Farley Avenue, Detroit 48239, effective January 15.

Stylon Corporation has announced the opening of its new area sales headquarters and showroom building—Stylon of Detroit at 13300 North End Street, Oak Park, Michigan 48237 effective September 15, 1964.

Architectural Research Corp., Ar-Lite Panel Division, has moved to 12068 Woodbine, Detroit 48239; telephone: 538-4010.

New local representative for the company is Holmes Associates, Inc., 1221 East Nine Mile, Ferndale 48220.

Standard Detroit Paint Co. has named Lester H. Waldo Vice President, Architectural Service Division and Architect Relations.

Waldo was a senior project administrator with Harley, Ellington, Cowin and Stirton, Architects and Engineers, for approximately twenty years.

A native Detroiter, he is an alumnus of old Central High School, and the College of Architecture, University of Michigan, and is a member of Alpha Rho Chi, Engineering Society of Detroit, Society American Military Engineers, American Association of Port Authorities and Lost Lake Woods Club.



WE ARE PROUD TO
HAVE BEEN SELECTED
MECHANICAL CONTRACTORS
FOR SHAPERO HALL OF
PHARMACY—WAYNE STATE
UNIVERSITY

PAULSEN, GARDNER & ASSOCIATES
ARCHITECTS

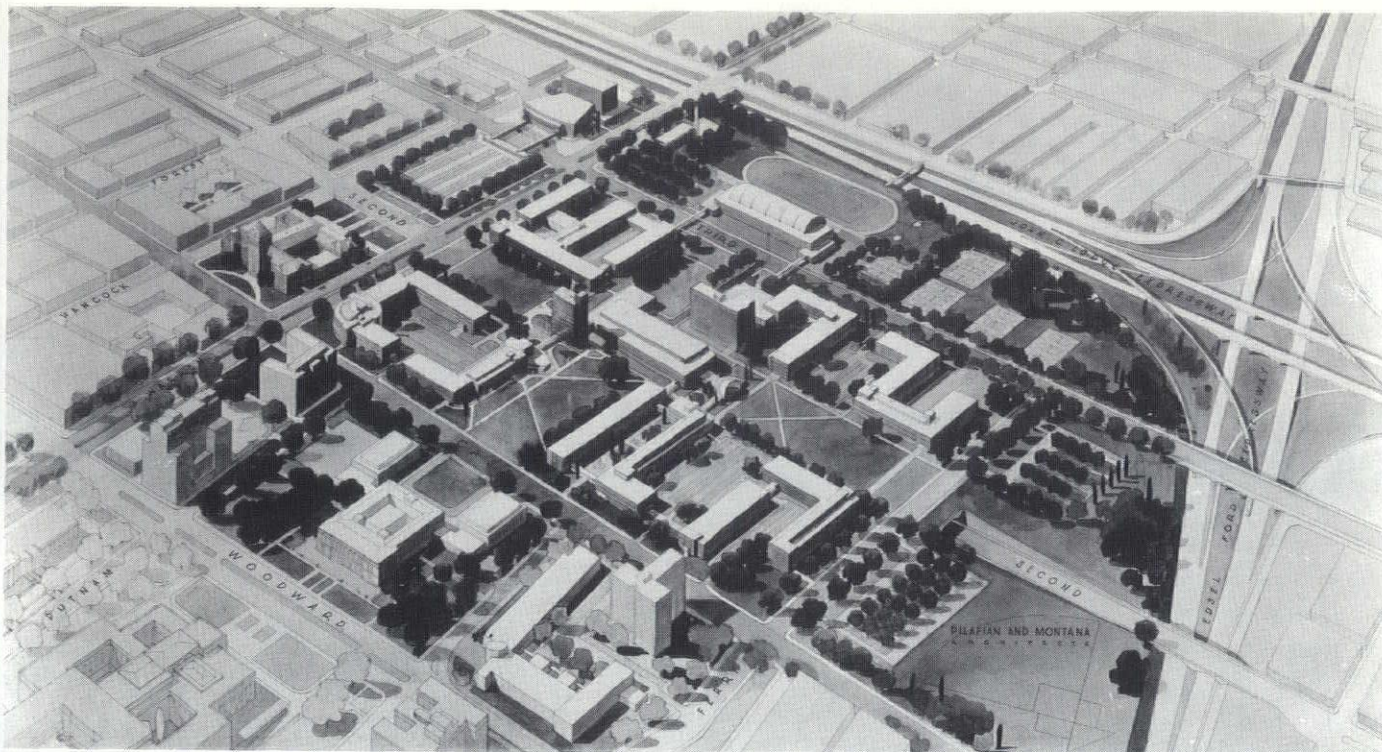
Zeni and Maguire Company

PLUMBING AND HEATING CONTRACTORS

12321 Woodrow Wilson

Detroit, Mich. 48206

Phone: 868-3070



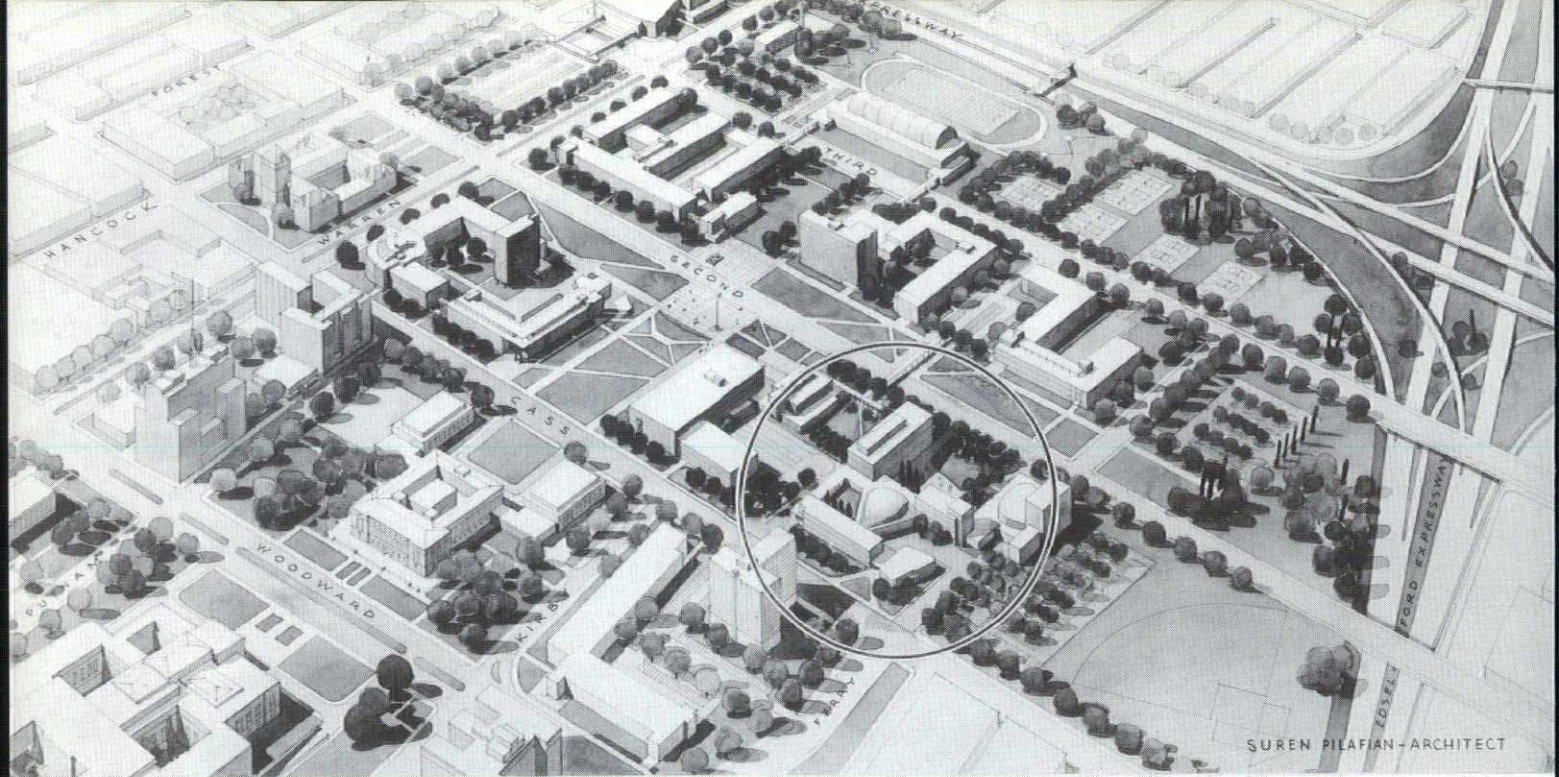
CAMPUS MASTER PLAN—1948
Pilafian & Montana, Architects

focus on the **FUTURE**

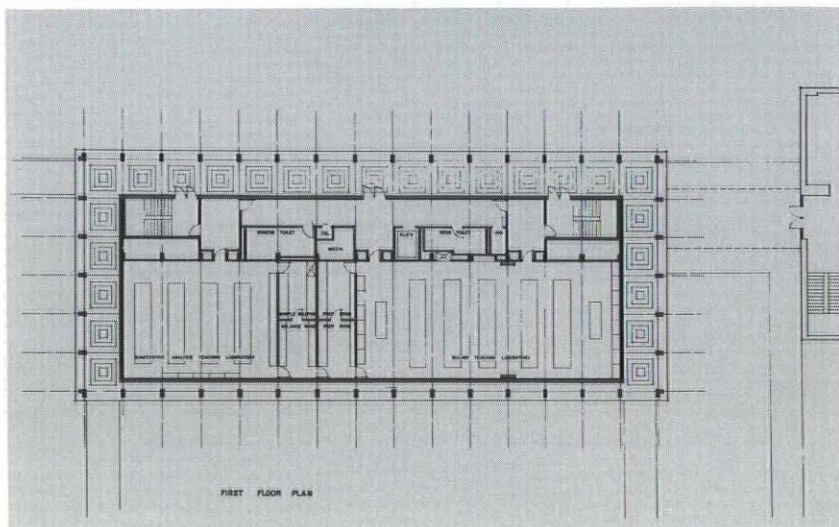
WAYNE STATE UNIVERSITY

by Dr. Douglas R. Sherman, Director
 Office of Capital Programs, W.S.U.

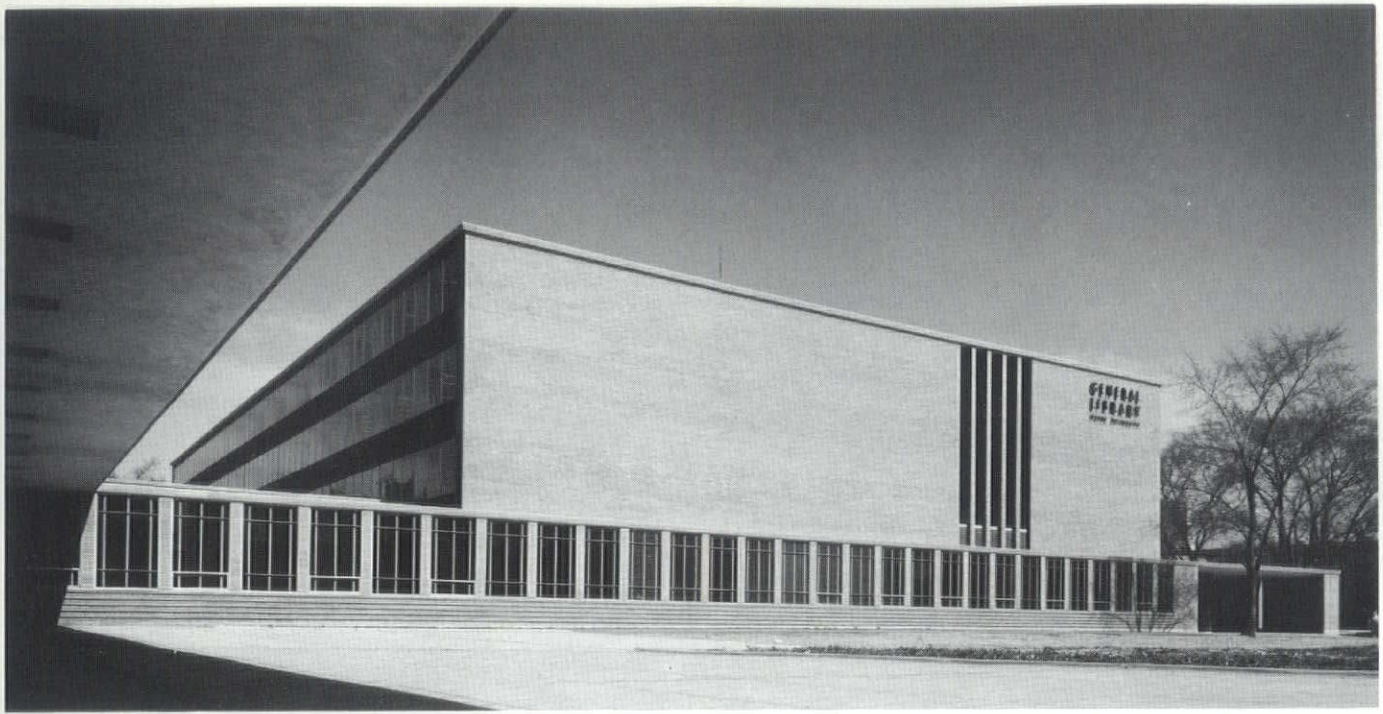
The focus is on the future at Wayne State University where enrollment, soaring now beyond the 25,000 mark, is expected to reach 40,000 in a few short years. Such measurements of progress as student population, land acquisition, and the construction of new buildings point dramatically to the fact that Wayne has experienced an unprecedented rate of growth during the past two decades. Even this record pace, linking yesterday and today, will be totally eclipsed by the exciting developments of tomorrow. With the same spirit of vitality that has made it one of the largest universities in the country, Wayne is now laying the foundation for the 1970's with a thoroughgoing program of campus development. This program,



CAMPUS MASTER PLAN—1954
Suren Pilafian, Architect



LIFE SCIENCES RESEARCH CENTER
Albert Kahn Associated
Architects & Engineers, Inc.



GENERAL LIBRARY
Pilafian & Montana, Architects

steadily gathering momentum, is geared to a sweeping expansion project stretching west and south of the present academic area.

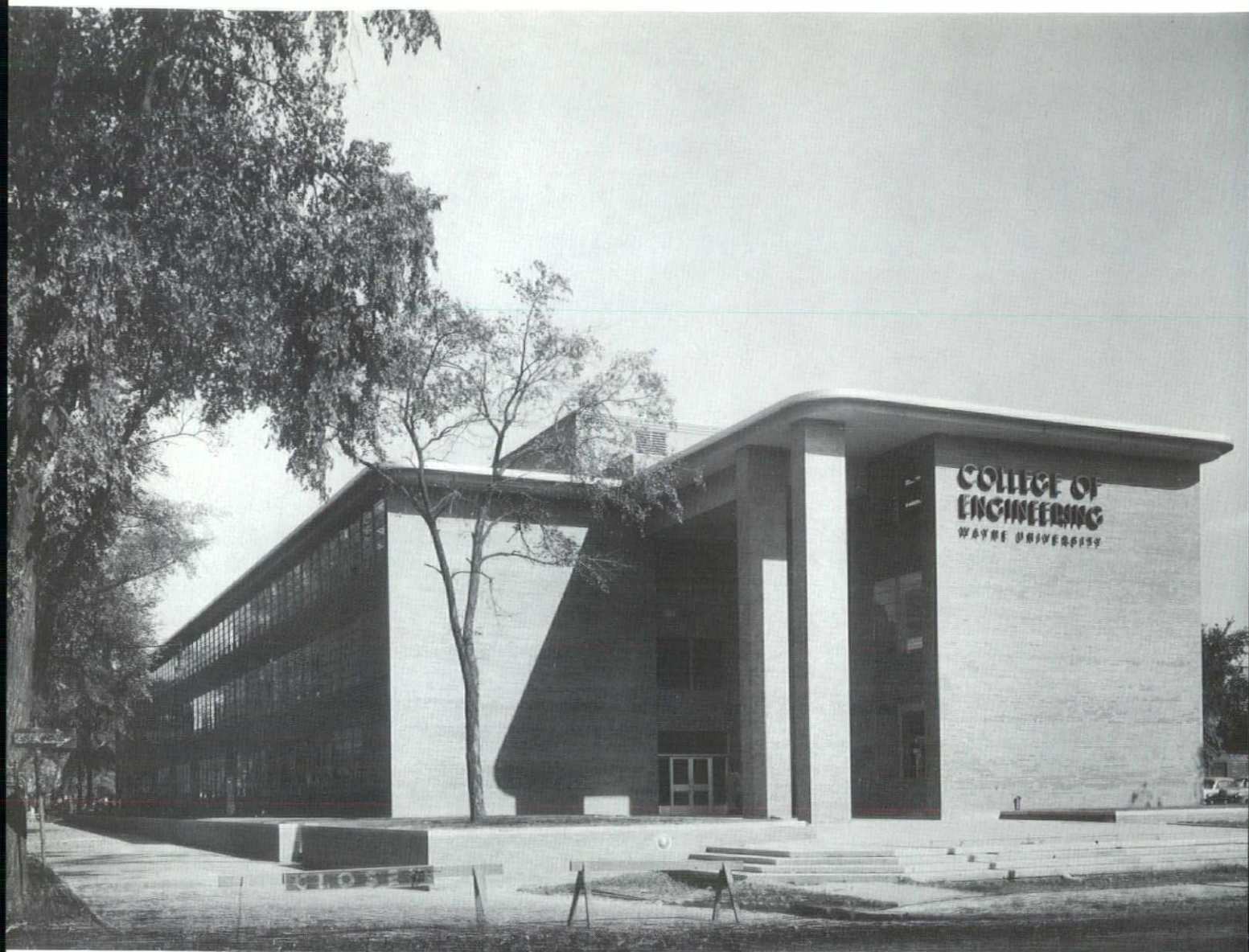
Ninety-two acres of urban renewal land adjacent to the present campus are earmarked for acquisition by the University. In effect, this extends the boundaries of the present campus to Trumbull on the west, Cass on the east, Forest on the south, and the Edsel Ford Freeway on the north. This expansion, made possible by far-sighted cooperation between Wayne

State University and the City of Detroit, molds a new campus concept for the University.

The present campus, east of John Lodge, will remain the hub of learning and academic pursuit; with the area to the west reserved for University housing, physical education, recreational and athletic facilities. Parking zones, an important consideration in any development, are, of course, included. Student traffic between the two areas will use pedestrian ways as well as exiting cross-over bridges.

KRESGE SCIENCE LIBRARY
Pilafian & Montana, Architects





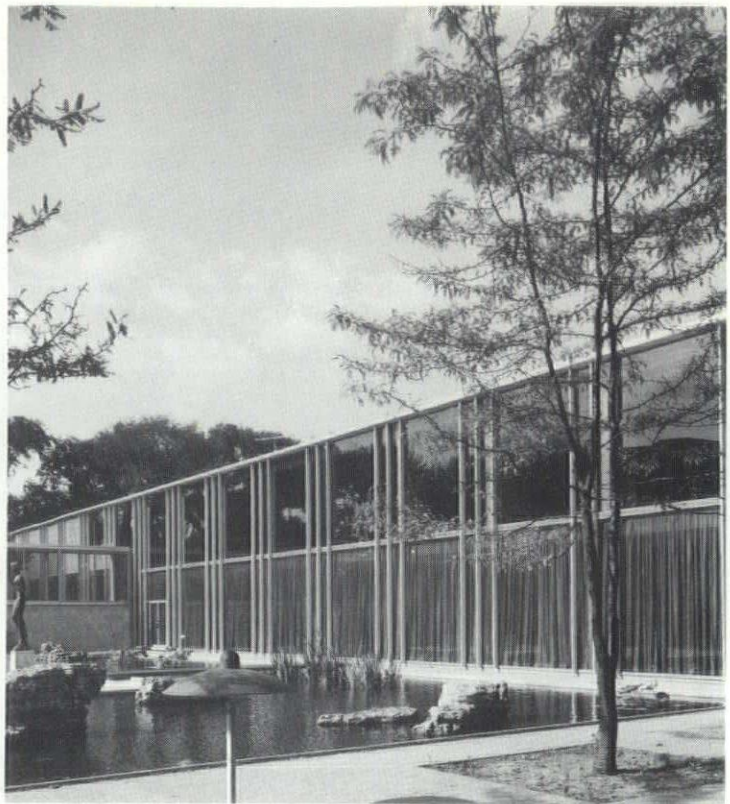
COLLEGE OF ENGINEERING
Pilafian & Montana, Architects



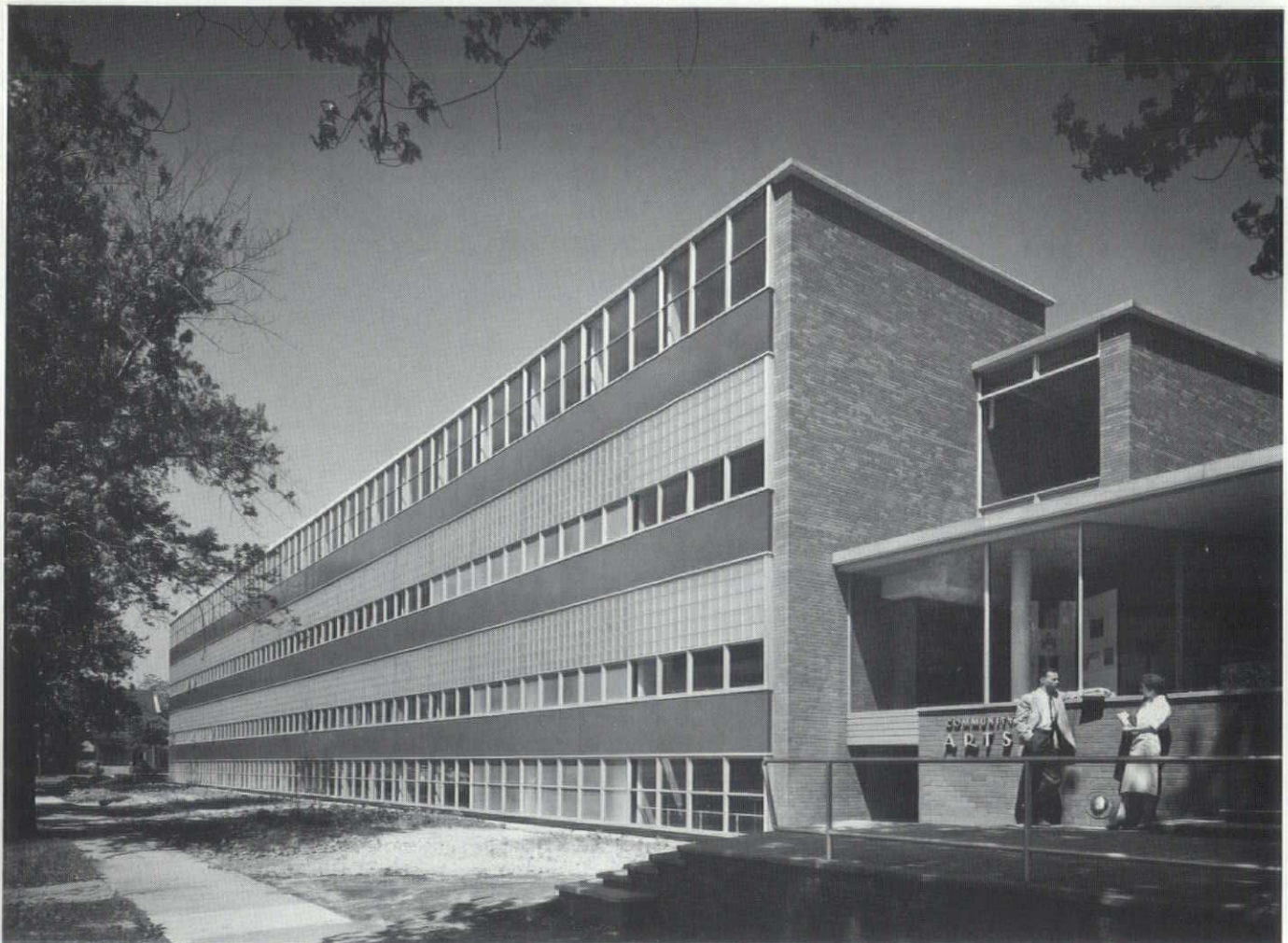
STATE HALL
Suren Pilafian, Architect

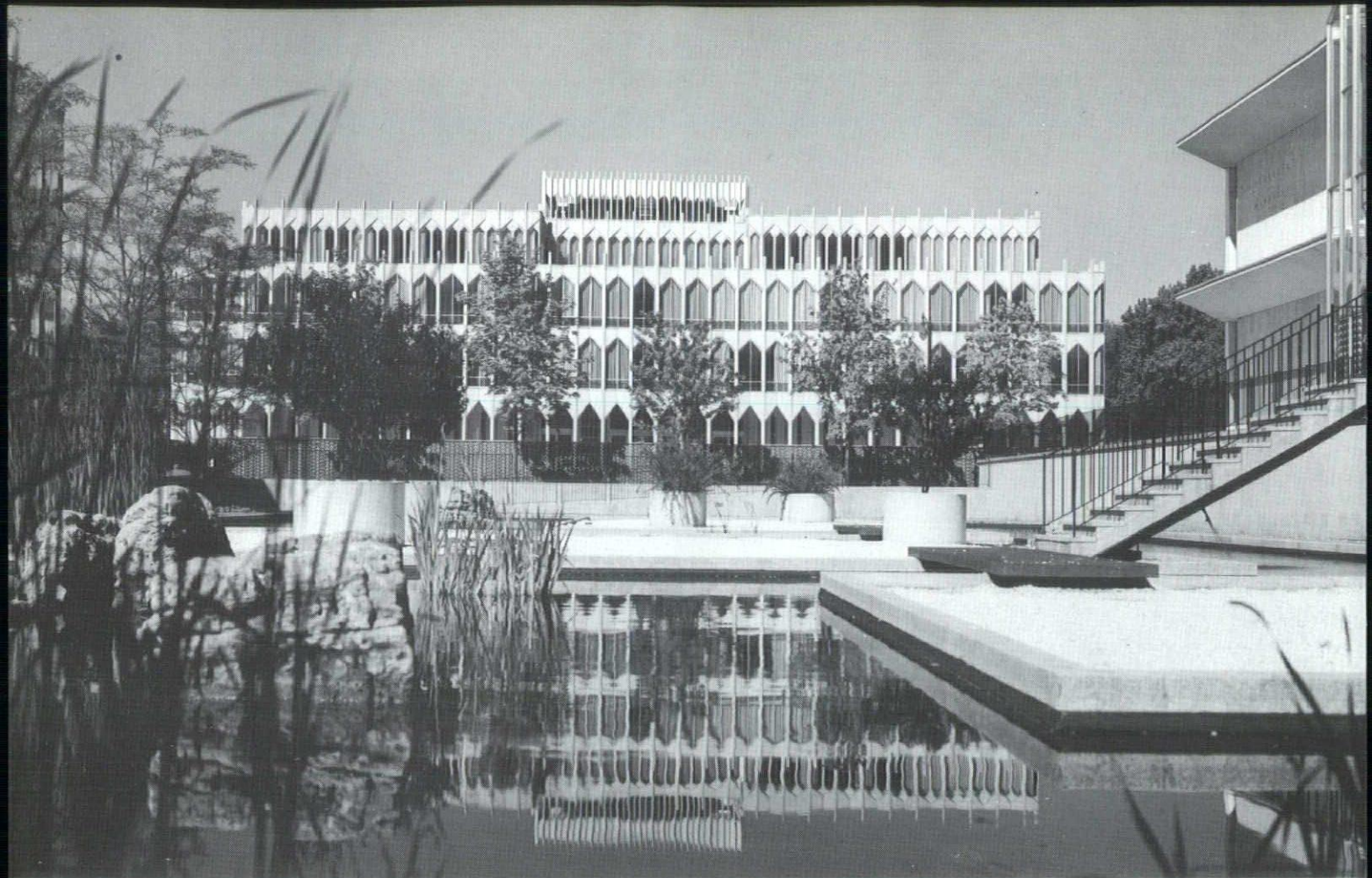
The first step in the dramatic changes which will characterize the Wayne State University campus has already been taken. The diversion of Second Avenue is now an accomplished fact and this has already resulted in the solid academic core of approximately 70 acres. The old Second Avenue Right-of-Way will become the basic element in the dramatic north-south mall. As an integral part of the new mall plan, a system of courtyards such as the McGregor Memorial Sculpture Court are planned as a part of the total development.

In the immediate future on the Main Campus are the following structures: Physical Education and Recreation Building, \$2,200,000, Alden B. Dow; University Center Building (Student Center), \$4,500,000, Alden B. Dow; Law School, \$2,500,000, O'Dell, Hewlett, and Luckenbach; Parking Structure, \$3,700,000, O'Dell, Hewlett, and Luckenbach.



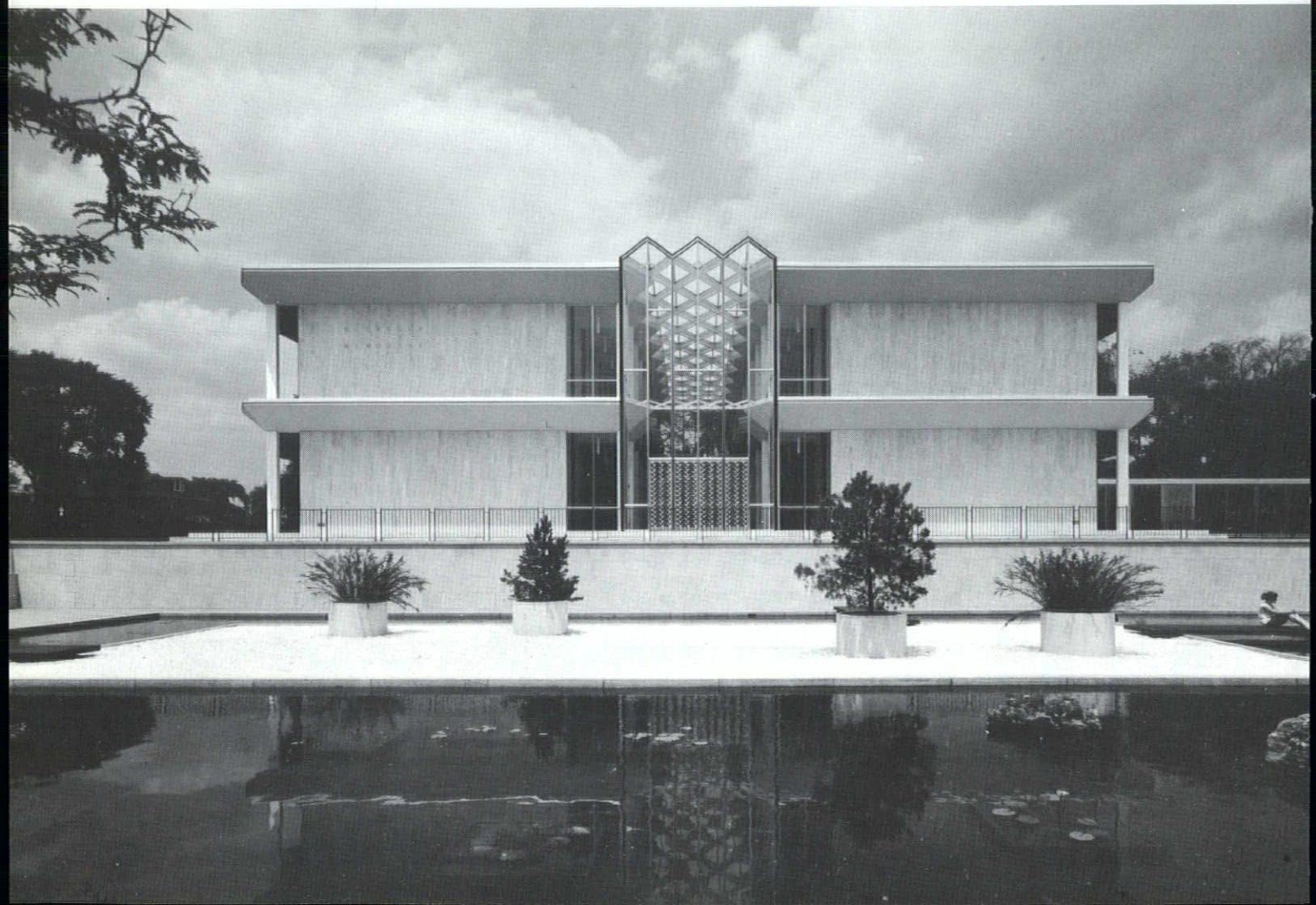
COMMUNITY ARTS CENTER
Suren Pilafian, Architect





COLLEGE OF EDUCATION ▲
Minoru Yamasaki & Associates, Architects

McGREGOR MEMORIAL COMMUNITY CONFERENCE ▼
Minoru Yamasaki & Associates, Architects



Developments currently in the preliminary planning stage include a \$8,000,000 Chemistry and Science Library facility, a \$4,500,000 building for Speech and Foreign Languages, a substantial addition to the College of Education, and new buildings for Engineering and Biology.

With the advent of the concept of the Detroit Medical Center, it was apparent that the key to this entire development lay in the inclusion of the school of Medicine at Wayne State University. Hence, it was decided that the School of Medicine would move from its present downtown location onto a new 25 acre campus, constituting in a very real sense the heart of the Detroit Medical Center.

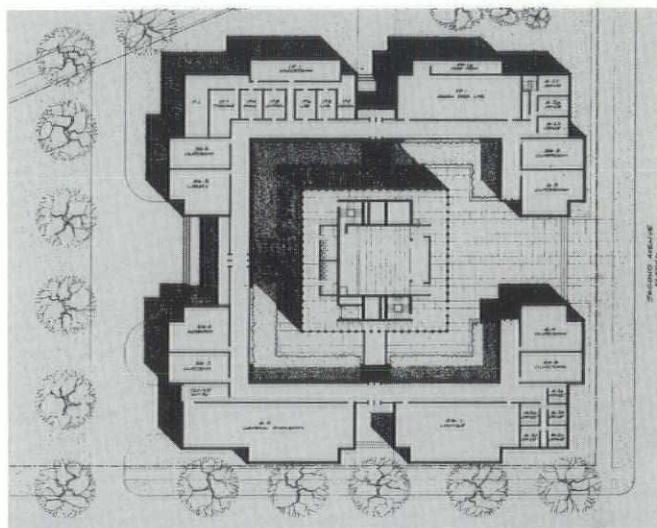
Initial construction on this campus has already been undertaken with the completion of a \$4,000,000 Medical Research Building. In the immediate future for the School of Medicine and the Medical Campus is the huge Basic Science Building which will include all of the teaching laboratories as well as research facilities. Other aspects of development include an Out-Patient Clinic, a Medical Library, and a Vivarium.

The building program at Wayne State University must be understood in the context of "building a university" rather than in the more limited view of the construction of individual structures. Hence, there is a feeling that each structure and every aspect of development must somehow fit into a total scheme for an expanding and changing university. Consequently, no building, as an individual unit, can be planned and constructed without serious consideration of the three basic aims of campus development: The educational aim, the environmental aim, and the economic aim.

The educational aim reflects the concept that the primary purpose of any university is education and that, therefore, the prime requirement of any university structure is that it be an effective learning facility.

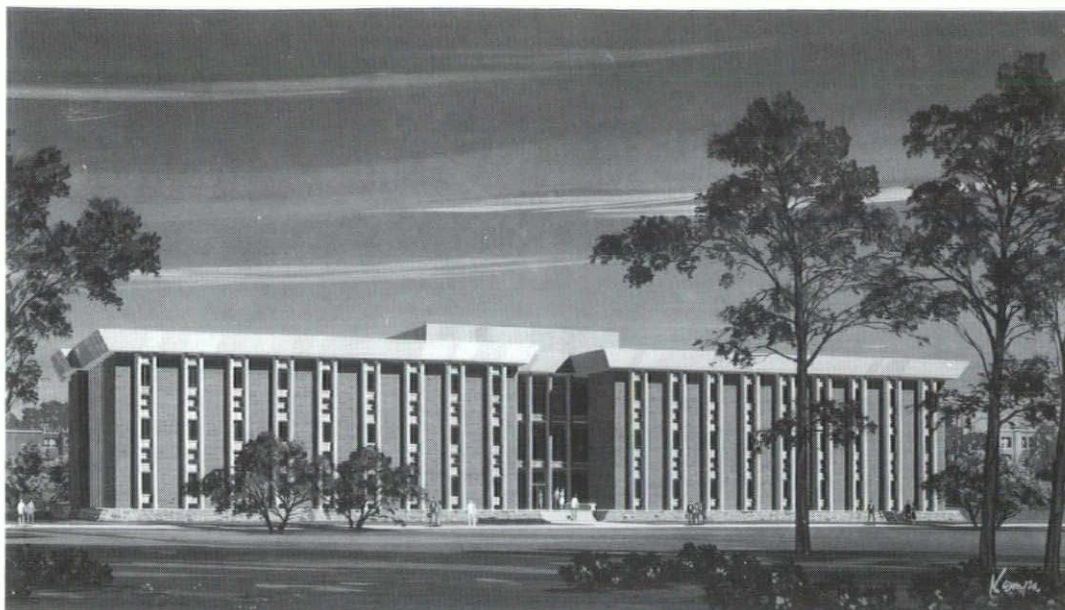
This effectiveness cannot only be measured in terms of "now", for it is evident that the Chemistry building of today is, in reality, stage I of a Chemistry complex. Hence, while a facility must provide the maximum in educational usefulness at the time of its completion, it must be so designed that it will not preclude those appropriate expansions, additions, and changes which must and will inevitably occur.

The environmental aim is of particular importance in a situation such as ours where the university is not only large, but finds itself part of a complex cultural center in a congested, urban atmosphere. With increasingly large numbers of students seeking higher education, the necessary facilities can very easily become overpowering in size and psychological feeling. Such a situation merely contributes to the dehumanizing qualities of modern life wherein we often find that our "registration number" is of greater apparent importance than our name and personality.



SHAPERO HALL OF PHARMACY
Paulsen, Gardner & Associates, Architects





MEDICAL RESEARCH
Smith, Hinchman & Grylls
Associates, Inc.

Hence, it becomes critical that each building and each developmental aspect of the total campus contribute to the sort of environment which is not something to stand in awe at, but rather something to be a part of. In this whole concept, aesthetics become a prime concern, but, again, the kind of aesthetic impact which we are striving to achieve at Wayne State is, hopefully, on the human level.

Another dimension of this environmental aim is the relationship of the University campus to the revitalized and expanding "inner city" of Detroit. Hence, it becomes essential that we work closely with the relevant City officials so that all developments in this area have real meaning in terms of an integrated total concept.

The economic aim is also of real importance, for any public agency such as a State university finds itself in a stewardship position with reference to public funds. We feel, therefore, a peculiar obligation to insure that each and every building and development program is a truly efficient economic undertaking. However, it is important that we not confuse

"economy" with "cheapness", for any building, however inexpensive, which does not meet adequately the educational requirements of the institution, is obviously a most expensive commodity at any cost. Similarly, the structure which does not provide for the changing nature of education and changing kinds of learning may easily prove to be most expensive. It must also be recognized that a bleak, uninteresting building is not only bleak and uninteresting today but will be so for the next 40 or 50 years; hence, here, too, a real loss can be sustained even though this cannot be measured in dollars or functional efficiency.

Finally, in all of our expansion programs we must be mindful of the fact that mere buildings—be they ever so useful or beautiful—are not a university. This thought has been expressed by countless persons in a wide variety of ways. Since a university building is, therefore, simply an enclosure where things of the mind may flourish, our ultimate goal is to provide the best possible physical surroundings for both intellectual and human growth.



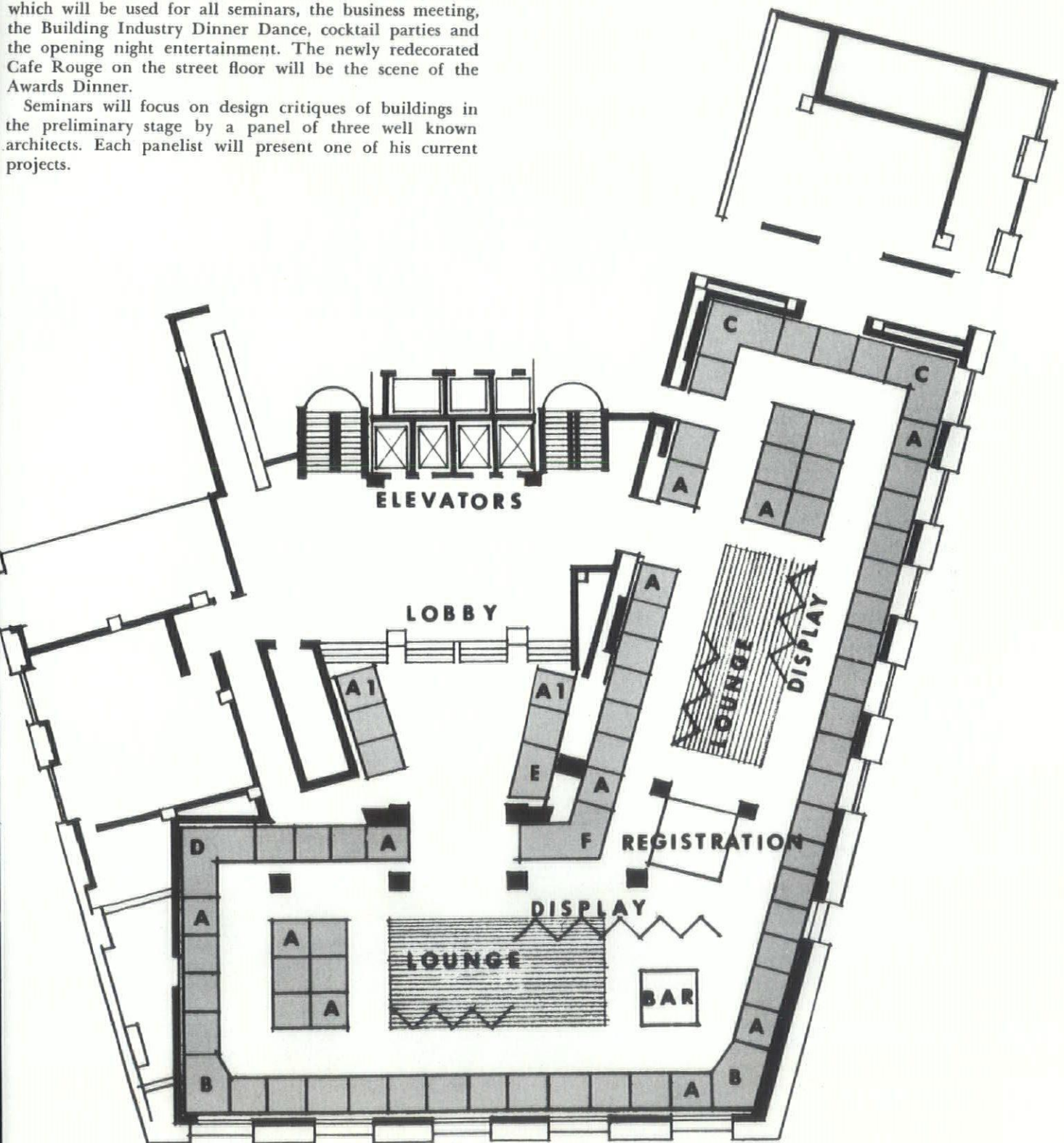
PHYSICS RESEARCH
Smith, Hinchman & Grylls
Associates, Inc.

MSA 51st Annual Convention

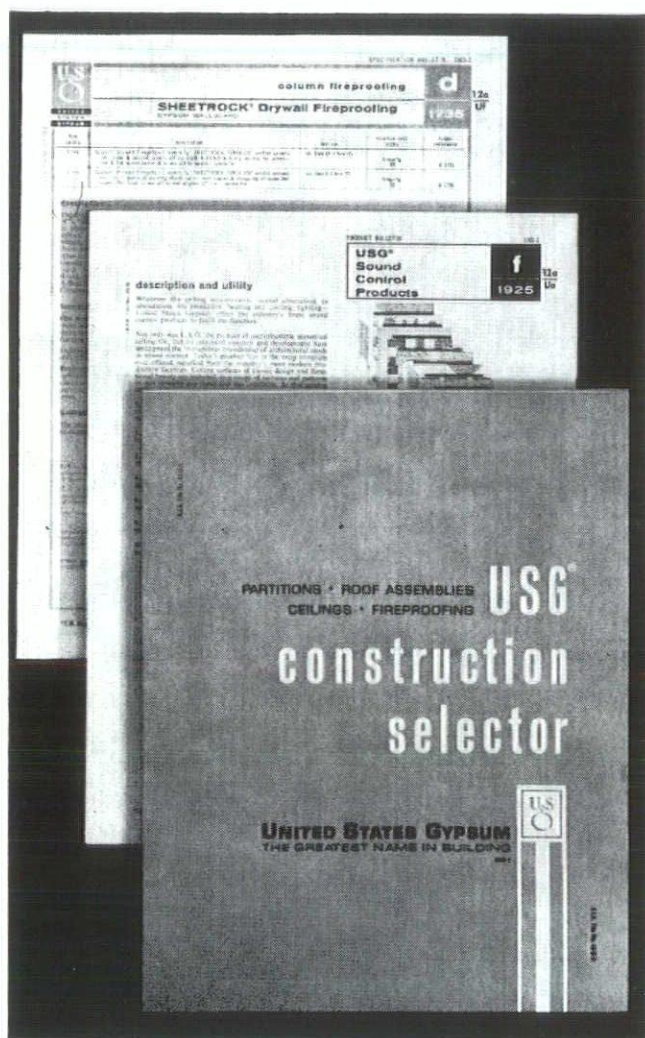
Plans for the Michigan Society of Architects 51st annual convention, March 17-19, are in the final stage of preparation, according to Samuel D. Popkin, Chairman.

The Mezzanine floor of the Statler Hilton (see plan) will be utilized for registration, exhibits and one luncheon. Additional exhibits will be located on the Ballroom floor which will be used for all seminars, the business meeting, the Building Industry Dinner Dance, cocktail parties and the opening night entertainment. The newly redecorated Cafe Rouge on the street floor will be the scene of the Awards Dinner.

Seminars will focus on design critiques of buildings in the preliminary stage by a panel of three well known architects. Each panelist will present one of his current projects.



A NEW CONCEPT IN LITERATURE, ORGANIZED BY FUNCTION TO SAVE YOUR TIME



Partitions, ceiling systems, roof assemblies, structural fireproofing, wall furring—United States Gypsum has developed a practical method to conserve your time in selecting these important construction systems.

Instead of the old "product line" method of organization, U.S.G. has completely reorganized its technical literature by *function and end use*!

This means you can quickly and accurately compare functional properties of construction assemblies. And then, just as quickly, you can locate the data required for selection and specification of those assemblies.

For the first time, you will find *all* U.S.G. product literature in one place—in Section 12a of Sweet's 1965 Architectural File. Consolidated in this 300-page unit are:

New Construction Selector: Compares functional criteria of all U.S.G. work-together products and systems. Simplifies selection from 140 system variations.

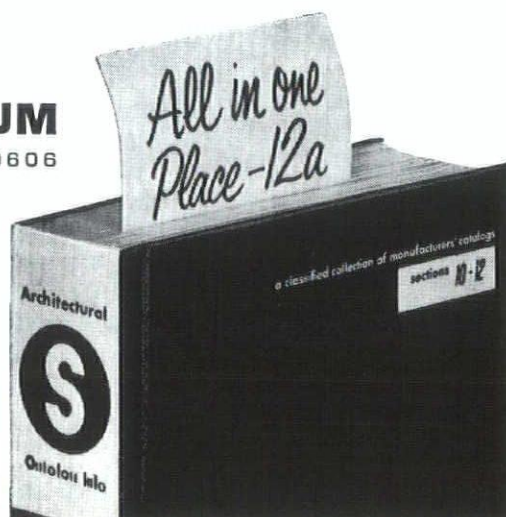
New Systems Brochures: 37 folders provide exact data, details, and specifications needed for each basic assembly.

New Product Catalogs: 9 separate folders supply additional information on components used in systems.

Your U.S.G. representative will be pleased to explain this new time-saving literature program in your office. He also can supply extra folders for your staff. To arrange for an appointment at your convenience, please call your U.S.G. district office.

UNITED STATES GYPSUM

101 S. WACKER DRIVE, CHICAGO, ILL. 60606



Meathe Nominated for A.I.A. Director

Philip J. Meathe has been nominated for Director of the Michigan Region, A.I.A. A former Director of the Michigan Society of Architects, Meathe recently concluded two years as President of the Detroit Chapter, A.I.A.



Philip J. Meathe

Voting for nominees for the office will take place at the Annual Business Meeting during M.S.A.'s Convention in March.

Election will be by all delegates to the Convention of the American Institute of Architects in June, 1965. Adrian N. Langius, FAIA, will conclude his three-year term at that time and the new Director will replace him on the Institute Board.

Flint Building Trades Organize Joint Committee

Over 70 Flint-area Building Industry representatives — including Architects, Consulting Engineers, General Contractors, Electrical Contractors, and Plumbing-Heating Contractors — met recently to organize The Flint Joint Building Industry Committee.

The purpose of the new ten-man Joint Committee is to discuss mutual problems in the Building Trades, and seek solutions benefiting customers and the general public. Such problems include how building specifications are drawn and followed, the responsibilities of Architects and the respective trades, and methods of supervising proper building installations.

It was reported that this is the first such local Joint Committee organized in the State of Michigan, although there is such cooperation at the National level.

Flint Area Chapter, A.I.A. is represented by Wessyl A. McKinley of Narmi, Nelson and McKinley; and Ralph W. Knuth of MacKenzie, Knuth and Klein.

S.M.R.C.A. Elects New Officers

Contractors belonging to the Southeastern Michigan Roofing Contractors Association held their annual meeting at the Pick-Fort Shelby Hotel for the purpose of electing officers. Elevated to the presidency was Lucien DeRyckere, President of Wallace Candler, Inc. Serving with him will be Duane Smelser, Vice President; Richard A. Reynolds, Secretary and William Garbe, Treasurer. Two directors were chosen to fill three year terms. They were Philip F. LaDuke, Jr. and William Ewing.

The S.M.R.C.A. group is made up of contractors in the Wayne, Oakland and Macomb counties area who do slate, tile, waterproofing and built-up roofing in the commercial-industrial fields.

Ideas for Space Flexibility Illustrated in New Brochure

"The Mathematics of Space in Educational Buildings," a new brochure designed to help school planners and administrators to get maximum use of available space, has been published by New Castle Products, Inc., New Castle, Indiana, manufacturer of Modernfold folding doors and partitions.

For new school planning, illustrated ideas are offered on the economic division of interior space for "program enrichment in a manner that will not restrict further curricula." For existing schools, faced with the problem of providing adequate space for greatly increasing enrollment, there are economical methods of making existing spaces convertible, adaptable, divisible and subdivisible at a fraction of the cost of new construction or equally costly major remodeling.

For a free copy of "The Mathematics of Space in Educational Buildings," contact any of the 200 Modernfold distributors in the U. S. or write directly to R. W. Bettner, Advertising Manager, New Castle Products, Inc., Box 353, New Castle, Indiana.

Building Science Seminars On Window Design

Basic considerations in the design of windows will be the subject of the 1965 Building Science Seminars being offered by the Division of Building Research, National Research Council, Ottawa, Canada. For the convenience of those wishing to attend, the Seminar will be given in two locations: in Ottawa, 3, 4 and 5 February; and in Calgary, 18 and 19 February 1965.

MICHIGAN DRILLING CO.

for

- Complete Laboratory Testing
- Diamond Core Drilling
- Soil Test Borings For Foundation and Other Structures



14555 Wyoming Ave.
Detroit 38, Michigan
Webster 3-8717

**go
wash
a brick
with safety!**
be sure to use
FOAM MASONRY

Throw away the acid! Foam Masonry leaves no acid residue when brick is washed! Here's the newest, safest way to wash brick! Harmless!

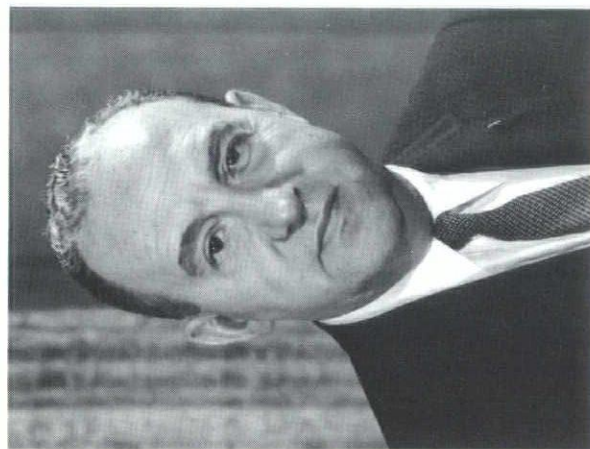
- ODOR-FREE, NO FUMES
- NO HARM TO MOST PAINTS
- NO DISCOLORATION TO JOINTS
- WILL NOT HARM NORMAL SKIN
- ELIMINATES PRE-WETTING

And . . . Foam Masonry will not attack extruded aluminum frames, vegetation, glass, unpainted wood and most painted surfaces. Quickly removes excess mortar, efflorescence, salt stains, red clay, rust, and water stains.

Distributed by
FACE BRICK, INC.
Detroit, Mich.
GEORGE P. ANDERSON CO.
Lansing, Mich.

Mfg. by
AMERICAN CALMAL CORP. Hialeah, Fla.

DETROIT CHAPTER COMMITTEES



As we look to the months ahead of us, it is well to consider what we want to accomplish and what are to be our goals.

Our primary task is to raise the prestige of our profession. It is no secret that we rate below the medical and legal professions in the eyes of the public. Unless *each one* of us lends his efforts to work for the highest professional standards, our status will not change.

As your president, I can only be as effective as your deep interest in the profession permits me. Your interest can be expressed in many ways, regardless of how busy you are (and the profession as a whole never had it so good!). Your officers, board and program chairmen will go "all out" to bring you stimulating programs—but unless you go "all out" to attend them—our efforts will be worthless!

We need more participation by every member in all of the manifold activities of the twenty committees of the Chapter.

All of the chairmen have been appointed. An innovation this year is the addition of a vice-chairman for each committee. So far the response from the membership for committee assignment has been very good. All of the committees with the chairmen and members are listed below. For you who have not yet made your selection, there is still an opportunity to contact the chairmen of the desired activity.

Now, once you have joined a committee, take your task seriously, contribute your ideas and actively share in the special project of the group. Above all, and this applies to the oldest and youngest members, let us have your suggestions and criticisms in the open, either at the meetings, or by personal contact with me. We all have one goal—the betterment and raising of the standards of the architectural profession.

Louis G. Redstone, FAIA
President

DETROIT CHAPTER THE AMERICAN INSTITUTE OF ARCHITECTS

BOARD OF DIRECTORS—1965

Louis G. Redstone, President
Louis Rossetti, Vice President
William R. Jarratt, Secretary
Philip A. Nicholas, Treasurer

Philip J. Meathe, Director
Louis Menk, Director
Frederick G. Stickel, Director
Robert W. Yokom, Director

OPERATIONS COMMITTEE

Louis Rossetti, Chairman

Frederick G. Stickel

Philip A. Nicholas

William R. Jarratt

Robert W. Yokom

Louis Menk

BUILDING CODE

Seymour H. Mandell, Chm.
Chas. W. Sherman, V. Chm.
Irving D. Feig
W. E. Kapp
Richard J. Penny
Morris Webster

HONOR AWARDS

Robert S. Swanson, Chm.
Hideo Fujii, V. Chm.
Donald P. Gustafson
Frank E. North
James E. Kinville

RESEARCH

Bruno Leon, Chm.
Robert G. Tucker, V. Chm.
Wm. T. Carter
Leo G. Shea
J. Paul Spellacy

PUBLIC RELATIONS

Gerald G. Diehl, Chmn.
Robert B. Albert, V. Chm.
Francis O. Bartlett
Marvin J. Brokaw
David O. Bruce
Adam DeMartino
Robert D. Dezur
James J. Giachino
Robert F. Roney
Richard R. Stadelman
Abraham Waronoff

FELLOWSHIP (not appointed)

MEMBERSHIP

L. J. Nelsen, Chm.
G. Bruce Boore, V. Chm.
Robert F. Kasprzak
Wesley E. LaRoy
Wm. S. Quinlan
Albert E. Schoerger

CHAPTER AFFAIRS

Suren Pilafian, Chm.
Wm. T. Carter
Bernard W. Colton
Joseph L. Flesher
Herbert L. Hawthorne
James B. Morison

HOSPITAL

Samuel D. Popkin, Chm.
John V. Sheoris, V. Chm.
Victor J. Basso
Clair W. Ditchy
Samuel P. Havis
Robert D. James
L. J. Nelsen
Henry W. Ruifrok
Donald W. Smith

RELATIONSHIP TO GOVT.

Thaddeus A. Bohlen, Chm.
Frank J. Volk, V. Chm.
Theodore E. Kurz
John S. McCombs
Wm. S. Quinlan
Frank E. Reynolds

HOME BUILDING INDUSTRY

Edward X. Tuttle, Jr., Chm.
Frank W. Klaetke, V. Chm.
Stanley Aizinas
John G. Branch
Eibert Van Kempen

PRESERVATION HISTORIC BUILDINGS

John P. Morgan, Chm.
Chas. McCafferty, V. Chm.
James E. Gibson
Fuad Hassan
Aloys F. Herman
Morris Jackson
W. E. Kapp
Shirley L. Owens
Alva J. Stilwell
Chas. M. Valentine
Harold F. Van Dine

METROPOLITAN RESEARCH

Charles A. Blessing, Chm.
Paul B. Brown, V. Chm.
Gerald M. Avrin
Joseph L. Flesher
Donald P. Gustafson
Francis E. Griffin
William Lyman
James H. Milides
Stephen W. Osborn
Maurice F. Parkins
Ralph Pierce
Frank E. Reynolds
Eberle M. Smith
William D. Smith

REGISTRATION

Robert F. Hastings, Chm.
Louis A. Rossetti, V. Chm.
Robert L. Blakeslee
William H. Ellis
Douglas L. Goulet
Harry J. Harman

EDUCATION

Earl W. Pellerin, Chm.
Harold Binder, V. Chm.
Robert D. Champlin
Ralph T. Bergsma
Robert L. Blakeslee
Stanley Fleischaker
Lawrence Green, S.J.
Robert E. Greager
Burton L. Kampner
Seymour J. Levine
Robert C. Wakely
Harold R. Wright
L.I.T. Student
U. of D. Student

OFFICE PRACTICE

Bradley N. Storrer, Chm.
Karl H. Greimel, V. Chm.
George L. Craven
Raleigh P. Engle
Nathan Johnson
Wallace Kagawa
John A. Lansing
Charles N. Neubrecht
Robert J. Tobin
T. E. M. Wheat

RELATIONS/CONSTR. IND.

A. Arnold Agree, Chm.
Seymour J. Levine, V. Chm.
Leo M. Bauer
Byron H. Becker
A. Robert Bitven
Julian R. Cowin
Robert J. Domke
Francis A. Faulhaber
J. T. Fusco
Raymond E. Hardtke
Wesley E. LaRoy
Maurice Lowell
Thomas McEvilly
Jas. P. Noble
Geo. L. W. Schulz
Robert W. Shaffer
Robert G. Tucker

SCHOOLS

Wallace B. Cleland, Chm.
Suren Pilafian, V. Chm.
Jas. R. Graham
Isaac Green
Wm. R. Hofer
John A. Lansing
Earl G. Meyer
Stephens S. Page
Joseph St. Cyr
Harold E. Ward

Executive Committee Report
Grand Valley Chapter, AIA
CHAPTER VITAL STATISTICS

MEMBERSHIP

Chapter now has approximately 85% of the eligible Registered Architects in the area as members which is already 10% better than the proposed Institute goal. New membership this year:

Corporate Members	Five (5)
Professional Associates	One (1)
Associate Members	Seven (7)

Biggest potential for increased membership is in the Associate category.

FINANCES

Expenditures over the budgeted items is due primarily to a lack of previous experience with Chapter budgets and increased Chapter activities. It appears that present dues structure will be adequate for some Chapter activities in the future.

ACCOMPLISHMENTS

BYLAWS, revised to conform to 1963 Institute Recommendations.

INCORPORATION—Chapter is now a non-profit Corporation under the laws of the State of Michigan.

CHAPTER HANDBOOK—First published this year as an aid to membership to have readily at hand under one cover all the vital current activities of the Chapter.

PUBLICITY—Press relations have been good. The full page in the Grand Rapids Press on Honor Awards was outstanding. It is an excellent boost for good Architecture.

COMMITTEE ACTIVITIES—Greatly increased over previous years.

Pretest
Div. of WM. BORTOLOTTI & SONS, INC.

... is more than just a trade name

The name expresses our concept of a new approach to the manufacture of polyester aggregate surface panels.

It is common practice for architects to specify that all of the aggregate for a precast panel project be ordered from the same source all at the same time. This is done to minimize the possibility of any difference in appearance of the finished panels. We feel this same line of thinking should also apply to the polyester matrix material. The thermo-setting resinous material used for the matrix of PRETEST panels is obtained from one source—PREMIXED AND PRETESTED under laboratory conditions and monitored by a staff of chemical engineers to assure maximum control of thermal properties and color stability.

Sales Representatives

J. M. POWER COMPANY

WO 2-2940

BOOK TOWER • DETROIT, MICHIGAN 48226

SUGGESTIONS FOR 1965

Survey for possible change in meeting day.
 Survey for possible addition of noon luncheon meetings.
 Increased activity in field of Urban Renewal.
 All-out assault on Urban Ugliness.
 Double activity in field of press and public relations.
 Chapter seminars on items in AIA Handbook (1963)
 Committees to take a more active role in programming Chapter activities.

Flint Area Chapter

Committee Assignments

To conserve active interest and man power, the functions of some twenty-five committees are being combined in three new Special General Committees—each encompassing a major activity of the Chapter, Society, and/or Institute. Activities of Chapter Vertical, Standing, and Special Committees will be carried on by the three new Special Committees, with individuals assigned to represent the Chapter and to bring M.S.A. Workshop and Regional Committees work back to their new Special Committee for consideration and possible further action on the local level. Each new Special Committee is charged with a specific goal, or major area of activity; however, all are urged to investigate the previous committee functions they encompass, and become active wherever they feel an effective job can be done. If helpful, sub-committees may be formed for this purpose.

**SPECIAL GENERAL COMMITTEE
 FOR CHAPTER AFFAIRS**

Charge: To stimulate active interest and participation in the Chapter, Society, and Institute by as many Corporate and Associate Members as possible.

General

Chairman	Dale Soumela	Awards Honors and Scholarships Chapter Programs and Arrangements
	Bob Gazall	State and Chapter Organization Administrative Study
	Auldin Nelson	Judiciary
	Herm Klein	Membership
	Neel Eubank	MSA Bulletin
	Don Sellers	
	Dave Hanoute	

Associate

Members	Felix Bessolo	Bob Giesey
	Larry Botti	Ron Reno
	Dick Currie	Tommy Roberts

**SPECIAL COMMITTEE FOR EDUCATION,
 RESEARCH, AND PROFESSIONAL PRACTICE**

Charge: To establish a working fee schedule and contract form with major local architectural clients.

General

Chairman	Jim Tomblinson	Urban Design
	Lauran Kretchmar	Architectural Design
	Archie Campbell	Public Relations
	Deane Truesdell	Government Relations
	George Haws	Preservation of Historic Bldgs.

Ralph Dittmer
 Charles Jones

Associate

Members	Don Allen	Gordon Mead
	Bill Berry	Mark Reed
	Denny Haugen	Jim Wheat
	Dale Henney	

ADVERTISERS INDEX

American Aggregates Corp.	3C
American Calmal Corp.	19
American Institute of Consulting Engineers	2C
Anderson, Geo. P. Company ...	19
Bortolotti, Wm. & Sons, Inc. ...	22
Century Brick Co.	6
Den Braven, M.	6
Detroit Edison Company	4
Duwe Precast Concrete Prod., Inc.	4C
Face Brick, Inc.	19
Kimball & Russell, Inc.	7
Michigan Asphalt Paving Association, Inc.	6
Michigan Consolidated Gas Co.	1
Michigan Drilling Co.	19
Power, J. M. Company	22
Roofing Industry Promotion Fund	23
Spancrete of Michigan	2
Sprinkler Irrigation & Supply Co.	26
Turner Engineering Co.	7
United States Gypsum	18
United States Steel Corp.	25
Wesco, Inc.	7
Zeni & Maguire Co.	8
Zonolite (Div. W. R. Grace Co.)	26

TV Editorial Reports

Northern Michigan Meeting

by Lester Biederman, WPBN-TV

Last evening, (January 14th) in the Munson Branch of the National Bank and Trust Company, the local chapter of the American Institute of Architects, which includes all of the locally operating architects as well as some in other cities in the Northern Area had an unusual monthly meeting.

There was a speaker from Ann Arbor, one Dr. Richard Ahern, who is a consulting architect and land use planner. The subject was architecture in Asia. He presented many slides of some of the most famous structures in the various Asiatic Countries.

The important thing that was easily apparent even to your editor was that city planning and land use planning has been taking place for centuries. He pointed out the layouts of some of the cities, the temples and the palaces and their relations to the terrain in which they were located.

After the slide illustrated address, he had some pertinent words to say about

the Grand Traverse Area. He pointed out in crystal clear fashion that the job of the architect and the land planner is not only to make things that they are commissioned to work on beautiful, but also what do you do about ugliness. He felt that in this area, where a great deal of development is taking place, and with the local architects being in the forefront, that we should be thinking in broad general terms to keep this area in interesting, beautiful yet utilitarian condition. He pointed out that building things on the highway is not necessarily the best place to locate facilities.

We would like to congratulate the local architects on bringing to this area such a well known authority, and giving him the audience that they did. Here is a man who knows architecture and city planning from the entire world, having studied for several years in Europe. The results of his address may effect the future beauty of this region. We express our gratitude to these architects.

If you want TOP PERFORMANCE on your next job specify: "The following work is to be done by a sub-contractor belonging to R.I.P.F." It's YOUR assurance of superior workmanship.

QUALIFIED

DEPENDABLE

EXPERIENCED



ROOFING

WATERPROOFING

SHEET METAL

Roofing Industry Promotion Fund

Burleigh Grime
Executive Secretary

8469 E. Jefferson Ave.
Detroit 14, Mich.

Area Code 313
822-0700



BULLETIN ROTO

Detroit Chapter Allied Arts Festival; Grand Valley Christmas Party; Producers' Council—Detroit Chapter Dinner Dance; Flint Area & Saginaw Valley Chapters—Producers' Council joint meeting.



IS COST YOUR PROBLEM?

If so, cut cost with USS GARYLITE Lightweight Expanded Slag Aggregate. GARYLITE is the most economical lightweight aggregate you can buy. Initially, GARYLITE costs many dollars *less* per ton than most lightweight aggregates; and being light, it is economical to haul. Better still, USS GARYLITE is economical to *use*.

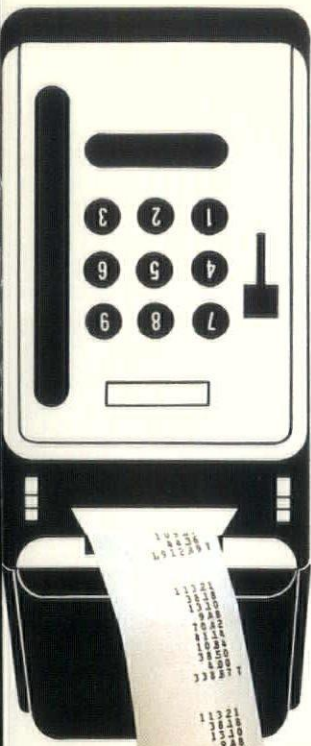
Concrete block manufacturers save because USS GARYLITE aggregate is available in both coarse and fine sizes—or blends—so one order usually fills every need. GARYLITE makes better blocks because it requires no special handling or equipment for mixing and molding, and it produces stronger *green* blocks that won't crumble or web-crack coming out of today's automatic block-making machines. Result: fewer rejects . . . more salable blocks per ton.

Builders save because 8-inch blocks made with USS GARYLITE weigh up to 12 pounds less than ordinary 8-inch blocks, so they cost less to ship, handle and lay. Masons can lay more lightweight units per day. And if a job calls for sawed blocks, sawing goes faster and saw blades last twice as long if the blocks are made with USS GARYLITE aggregate.

Building owners save, too, because blocks made with GARYLITE reduce dead load and often permit savings in structural steel and other building members. GARYLITE makes beautiful natural-colored masonry units, with pleasing textures that require no finishing—but paint, plaster and other coatings cover evenly and adhere well. Paneling and wood trim go on fast, too, because GARYLITE makes concrete more nailable than any other aggregate.

Add such other cost-cutting features as lasting beauty, 4-hour fire resistance, better thermal insulation and sound absorption—all provided by USS GARYLITE Expanded Slag—and you'll agree, it's the most economical lightweight aggregate you can buy. For more information, call or write United States Steel, Raw Materials Sales at any of the following offices: 208 S. LaSalle Street, Chicago, Illinois, Phone 236-9200; 209 Broadway Building, Lorain, Ohio, Phone 245-6897; 525 William Penn Place, Pittsburgh, Pa., Phone 391-2345. *USS and GARYLITE are registered trademarks.*

United States Steel 



MSA—SMEAD Draftsmen's Competition Announced

MSA's Competition Chairman Edward W. Gabert, AIA, and SMEAD Industry Fund Executive Secretary Anthony Asher have announced the jointly sponsored MSA-SMEAD Industry Fund Draftsmen's Competition for 1965. The competition will run from February 9, 1965 through midnight March 3, 1965. Awards will be made at the Annual Awards Dinner, March 18 during MSA's 51st Convention.

ELIGIBILITY: All architects, engineers and draftsmen, who are employed in the State of Michigan by an architect or an architectural-engineering consultant or consulting firm who may be retained by an architect and whose name appears on the competitor's entry in association with an architect or architectural-engineering firm, is eligible for the Competition.

Each competitor must provide himself with an endorser who shall be a member of the Michigan Society of Architects. In case of a person employed by an architectural or architectural-engineering firm the endorser shall be a principal of the firm, or in the case of a person employed by an engineering consultant or consulting firm, the endorser shall be the architect or principal of the architectural or architectural-engineering firm for whom the work is done.

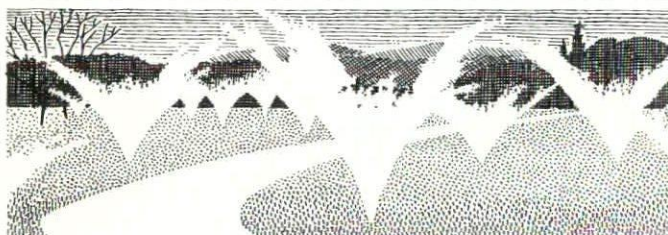
ENTRIES: Each competitor shall submit one (1) white print and one (1) blueprint of any single working drawing of a tracing executed by himself or herself during the calendar year 1964 for an actual building to be constructed. Only one entry per contestant will be accepted and this entry shall be a reproduction of the original working drawing. It shall not have been retraced for the purpose of providing the contestant with a better entry. No more

than two entries in each category, architectural, structural, mechanical or electrical will be accepted from any one architectural or engineering firm. Such organizations shall select, by competitive means within their offices, those entries judged the best, for submission to the MSA Competition for Draftsmen. All entries become the property of the Michigan Society of Architects and will not be returned to contestants. The Michigan Society of Architects and the Sheet Metal Employers Association of Detroit Industry Fund reserve the right to exhibit any of the entries submitted at the forthcoming 51st MSA Annual Convention and elsewhere as such exhibits may serve the purpose of the Competition.

AWARDS: The following awards will be made to the winners by the Sheet Metal Employers Association of Detroit Industry Fund at the Annual Awards Dinner, March 18, 1965 during the 1965 Convention of the Michigan Society of Architects to be held March 17, 18, 19, 1965 . . . Statler-Hilton Hotel, Detroit, Michigan.

PRIZES:

- | | |
|--------------------------------------|-------|
| (A) Grand Prize | \$200 |
| Entry judged best of all categories. | |
| (B) First Prize: | |
| Architectural | \$125 |
| Structural | \$125 |
| Mechanical | \$125 |
| Electrical | \$125 |
| (C) Second Prizes: | |
| Architectural | \$ 75 |
| Structural | \$ 75 |
| Mechanical | \$ 75 |



SPECIFY A GREEN LAWN...
for your next commission



INCLUDE



Permanently installed Buckner sprinkler systems or hose sprinklers are providing better looking, easier to maintain turf for leading building areas all over the world. In your next commission insist on genuine Buckner sprinklers, key to successful irrigation.

- Plans and specifications available to architects and engineers.

**SPRINKLER IRRIGATION
SUPPLY COMPANY**

1316 N. CAMPBELL RD.

ROYAL OAK, MICHIGAN

"Serving With Integrity Since 1925"

**How to
widen your roof deck
design latitude,
save your client money**

**CUT WEIGHT FACTOR
BY 50% TO OVER 80%**

Zonolite* Insulating Concrete in roof decks weighs up to 50% less than gypsum... 1/6 as much as structural concrete. It's applicable with form boards, metal decks, or pre-stressed concrete systems. You get incombustible, permanent, monolithic decks plus insulating, value which saves money on heating, cooling equipment.

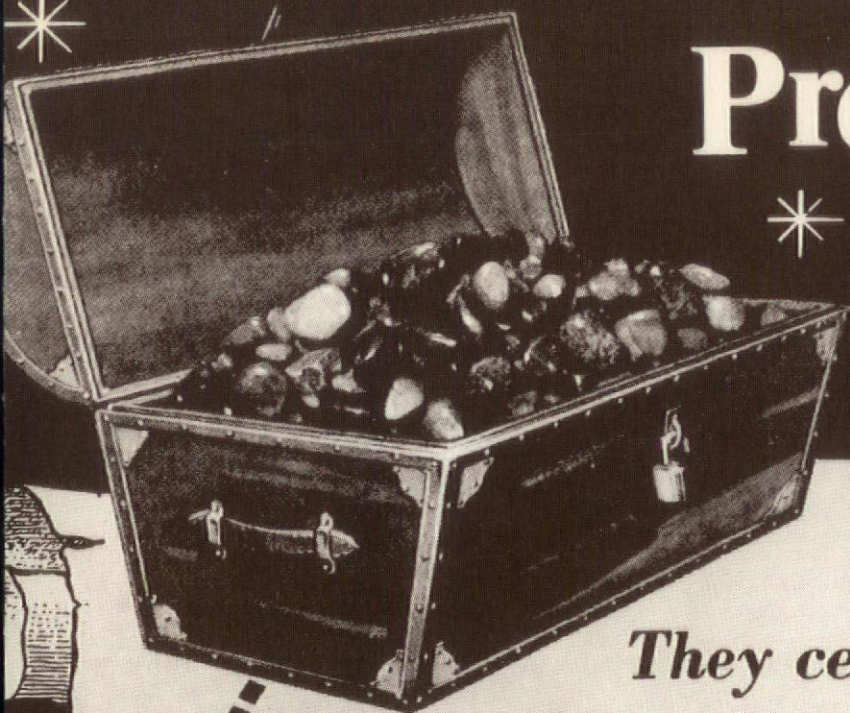
What's more, we certify it will be applied as you specify—exactly. Your Zonolite representative has details.

ZONOLITE
ZONOLITE DIVISION
W. R. GRACE & CO.
135 SO. LA SALLE ST., CHICAGO, ILL.

ZONOLITE INSULATING CONCRETE ROOF DECKS

* Reg. trade mark of Zonolite Div., W. R. Grace & Co.

Precious Stones?



They certainly are!

We make them that way. All our Detroit area concrete aggregates now receive the benefit of treatment by **HEAVY MEDIA SEPARATION!** We call this new policy **TOTAL PRODUCT TREATMENT.** It's your assurance of *gem* quality at *gravel* prices.

OXFORD

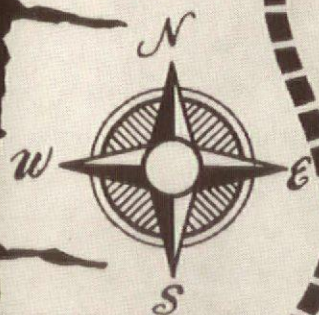
ROMEO

X marks the spot for our Green Oak, Oxford and Romeo plants—so stop searching and start using or specifying materials produced by the **AMERICAN AGGREGATES CORPORATION** where the policy is **TOTAL PRODUCT TREATMENT.**

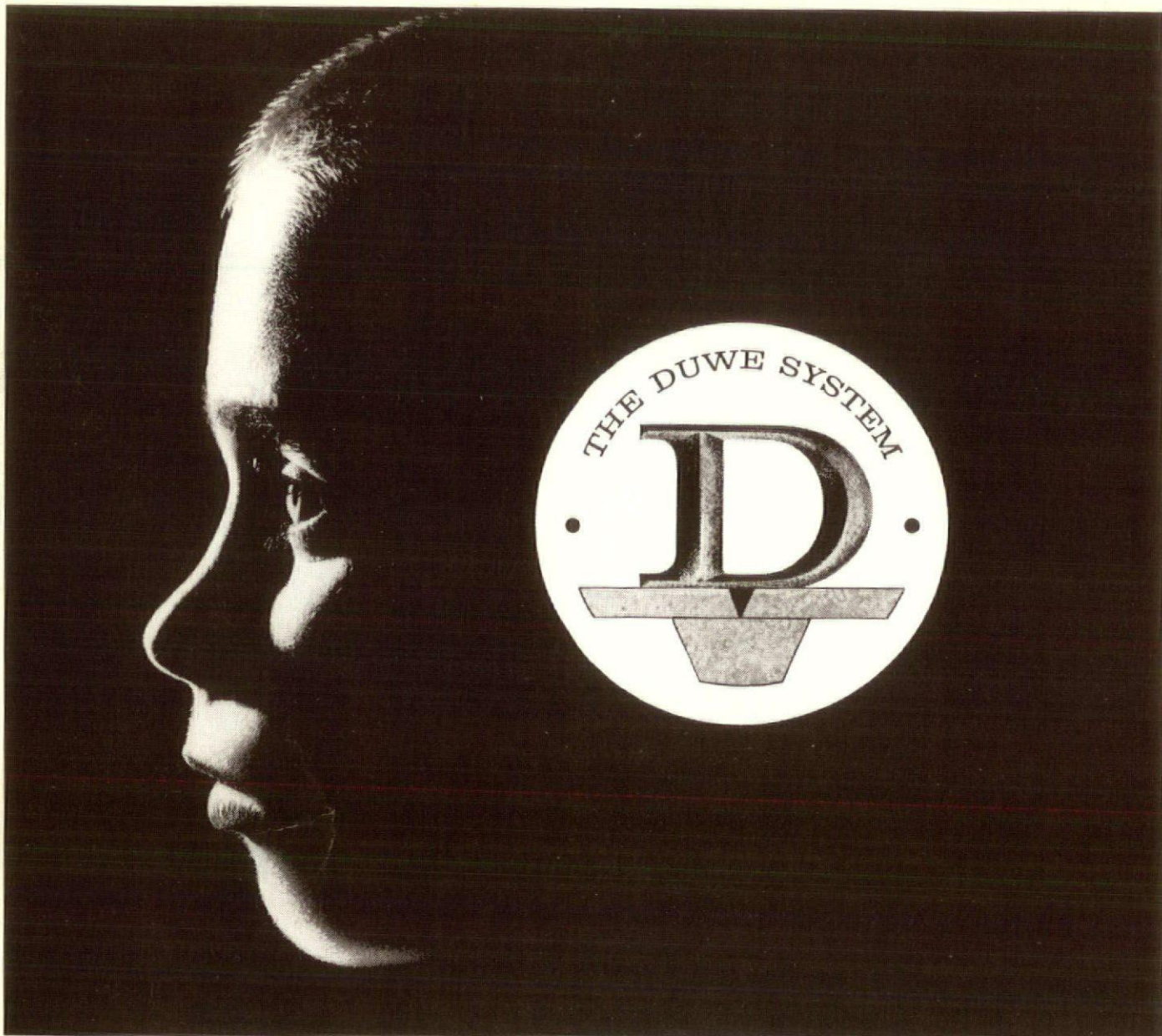
It's a decision you'll always treasure!



12500 Greenfield Ave., Detroit, Michigan 48227
Area Code 313 — VE 5-3050



GREEN OAK



Helping Johnny to Hear... Learn

*Johnny has a better chance of grasping what he is taught in today's modern school than did Mom and Dad because of vastly improved classroom acoustics. The obstacles created by poor acoustics in school, office, factory, etc., are being overcome. One effective, popular way of improving noise control is to start with **DULITE** in the Duwe System. This utilization of Duwe pre-cast units assures far better acoustical values in whatever building you design. Improved acoustics is but one of the advantages of this System. Write for complete details.*

DUWE PRECAST CONCRETE PRODUCTS, INC.

Phone 414/231-3980 • P. O. Box 1277 • Oshkosh, Wisconsin

THE OCTAGON
1735 New York Avenue, N.W.
Washington 6, D. C.

DETROIT, MICH.