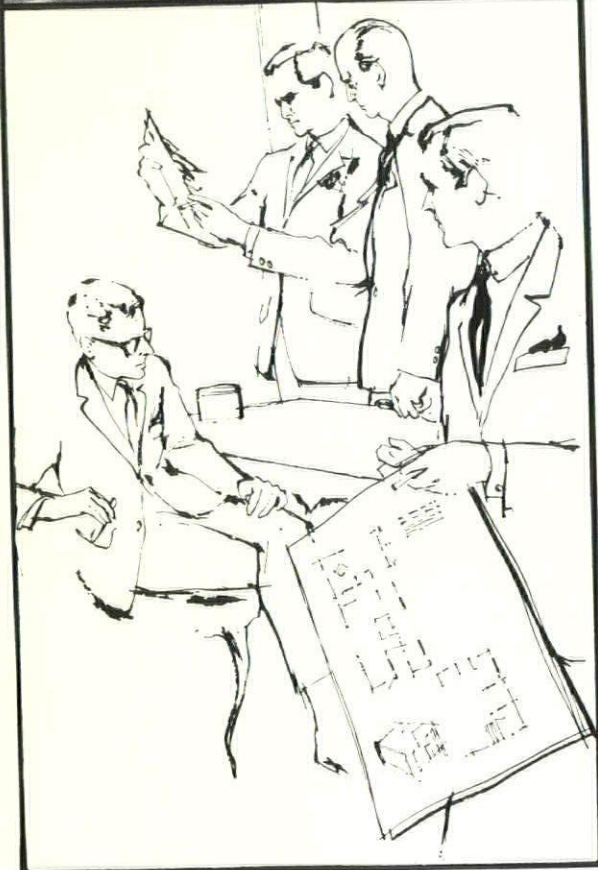
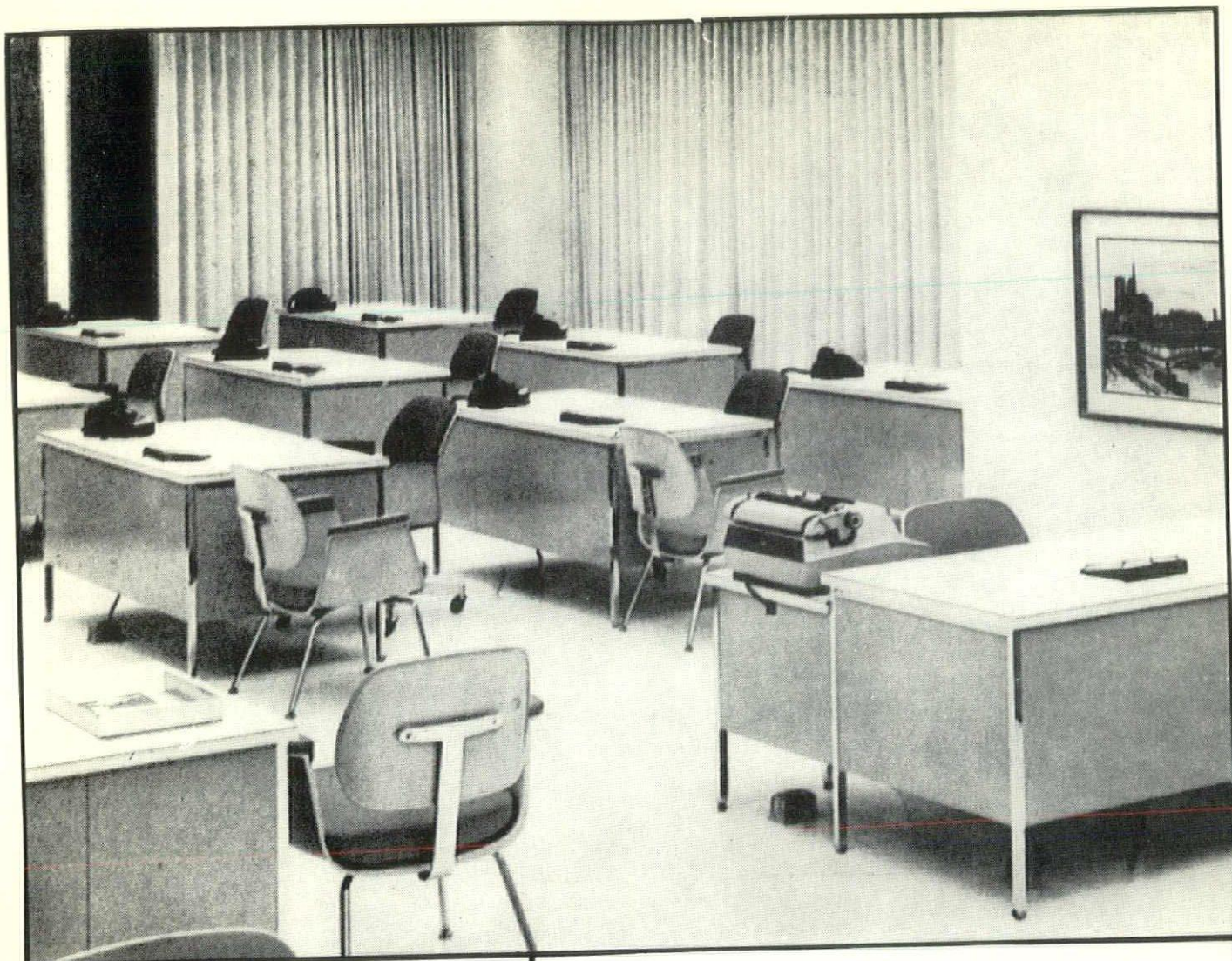


AMERICAN INSTITUTE
OF
ARCHITECTS
DEC 14 1964
LIBRARY

BULLETIN

michigan society of architects december 1964 50¢



Hudson's Contract Division designs tasteful interiors for all architectural styles. Hudson's experts work right along with the architect to create a fully coordinated, liveable building; or Hudson's will remodel existing facilities. In either case, Hudson's Contract Division does everything from preliminary planning to placing of furniture and accessories. Come in or call. Hudson's, Downtown, 13th fl., CA 3-5100, extension 3119.

HUDSON'S
CONTRACT DIVISION

BULLETIN

michigan society of architects december 1964

THE MONTHLY BULLETIN
IS PUBLISHED FOR THE
MICHIGAN SOCIETY OF
ARCHITECTS TO ADVANCE
THE PROFESSION OF
ARCHITECTURE IN THE
STATE OF MICHIGAN.

Volume 39—No. 12

EDITOR—
James B. Hughes, AIA
ASSISTANT EDITOR—

Ann Stacy
ART DIRECTOR—
Edward Hutcheson

GRAPHIC ARTS
CONSULTANT—
Gary R. Grout
Ann Arbor Press

ADVERTISING
DIRECTOR—
Charles O. Irvine

CHAPTER ASSOCIATE
EDITORS
Detroit . . .

Wallace Cleland, AIA
Flint Area . . .

Dale A. Suomela, AIA
Grand Valley . . .

Jay H. Volkers, AIA
Huron Valley . . .

Henry S. Kowalewski, AIA
Mid-Michigan . . .

John E. Crouse, AIA
Northern Michigan . . .

Richard H. Greenless, AIA
Saginaw Valley . . .

William Stenglein, AIA
Western Michigan . . .

Donald W. Stearns, AIA
MSA BOARD LIAISON . . .

George W. Sprau, AIA
EDITORIAL

CONSULTANT . . .
Nancy M. Houston

Monthly Bulletin, Michigan Society of Architects, the official publication of the Society; all Michigan Chapters of the American Institute of Architects; Women's Architectural League of Detroit (WALD); Producers Council, Inc., Michigan Chapter; Builders & Traders Exchanges of Detroit, Grand Rapids and Lansing is published monthly by the Michigan Architectural Foundation; Editorial and Advertising Offices—28 West Adams, Detroit 26, Michigan, Phone: 965-4100.

3 Honor Awards Programs

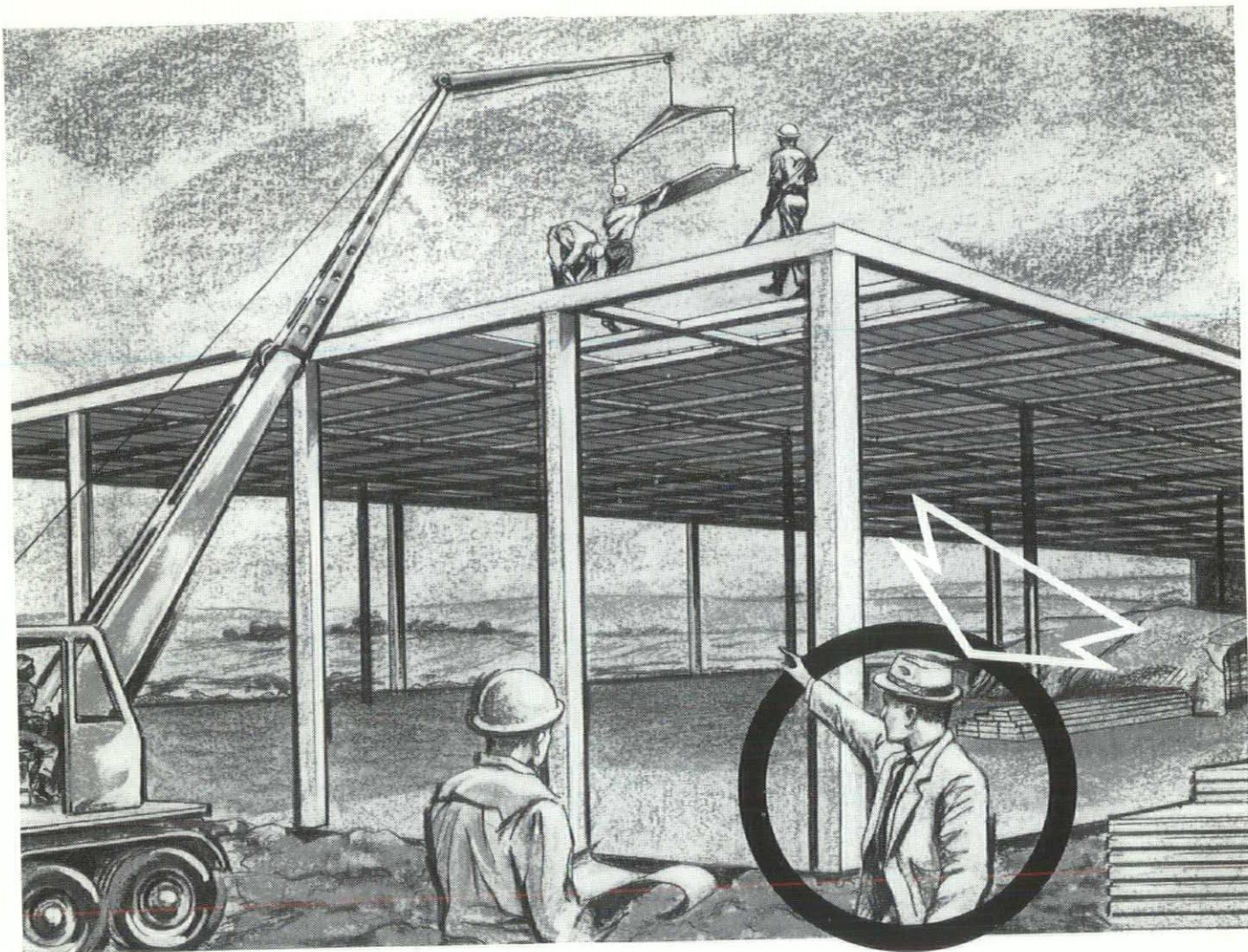
11 News

17 Advertisers' Index

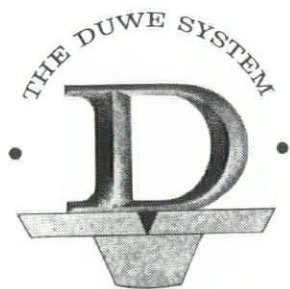
20 Calendar

January 1965—M.S.A. Membership Roster by Chapters. Deadline for Advertising and Roster Changes—December 10, 1964.

Monthly Bulletin, Michigan Society of Architects, is published monthly at 28 West Adams, Detroit 26, Michigan. Entered as second class matter January 15, 1946 at the Post Office at Detroit, Michigan under Act of March 3, 1879. Subscription price, \$4.00 per year (members \$2.00). 50 cents per copy.



Duwe's man in the field and his value to you



From planning to building completion Duwe's Field Representative works with you to achieve fast, efficient construction. He goes to the job at the outset, becomes acquainted with supervisory personnel and ascertains earliest date roof system can be installed. Plans are discussed with all who are involved. And he is on the job to see that the system is properly installed . . . and carries out final supervision with the architect. For full details on the unique Duwe System, phone or write —

Duwe Precast Concrete Products, Inc.

P.O. BOX 1277 • PHONE AREA 414/231-3980 • OSHKOSH, WISCONSIN

HONOR AWARDS PROGRAMS

Members of the Detroit and Grand Valley Chapters of The American Institute of Architects recently participated in Honor Awards Programs sponsored by their chapters. Forty entries were submitted in the Detroit program, sixteen in Grand Valley's.

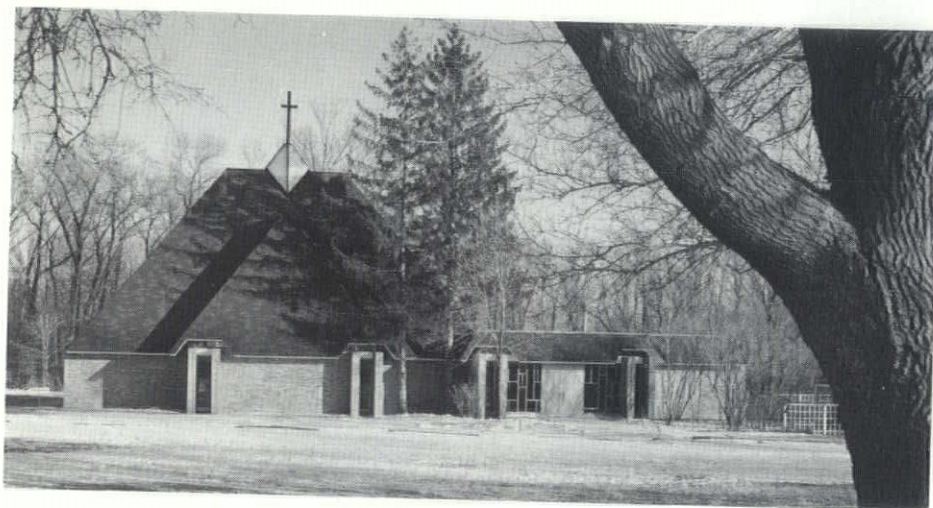
The Detroit submissions were judged in Philadelphia by J. Roy Carroll, Jr., FAIA, Vincent Kling, FAIA, and Robert L. Geddes, AIA. One First Honor Award and three Awards of Merit were given.

The jury commented, "The overall quality of the submissions is commended. The Detroit Chapter program in general includes well above average examples which indicates that there is hope for better architecture in this country."

Judging of the Grand Valley entries took place at Lawrence Institute of Technology in Southfield. The Jury, which included Earl W. Pellerin, FAIA, Gunnar Birkerts, AIA, Philip J. Meathe, AIA, and Marshall Fredericks, Sculptor, gave two Awards of Merit and four Honorable Mentions.

They commented, "The jury is generally pleased with the over-all showing of the work. We feel this is a very worthwhile program for Architecture and Architects and strongly urge that it be an annual affair."

The buildings premiated in both programs are presented with comments by the juries.

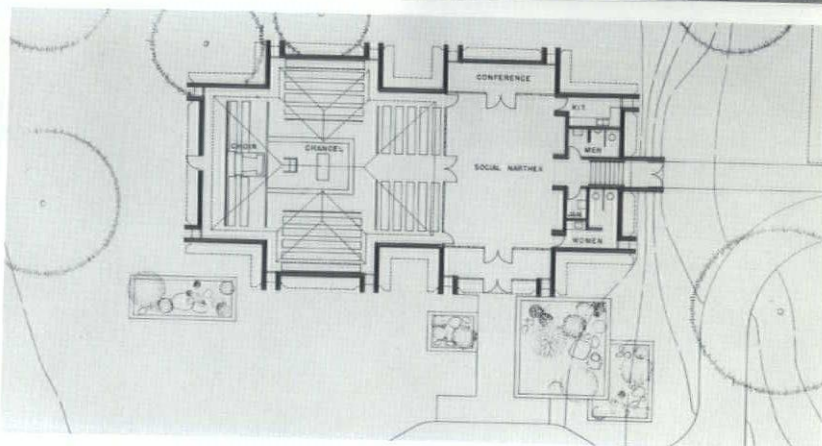
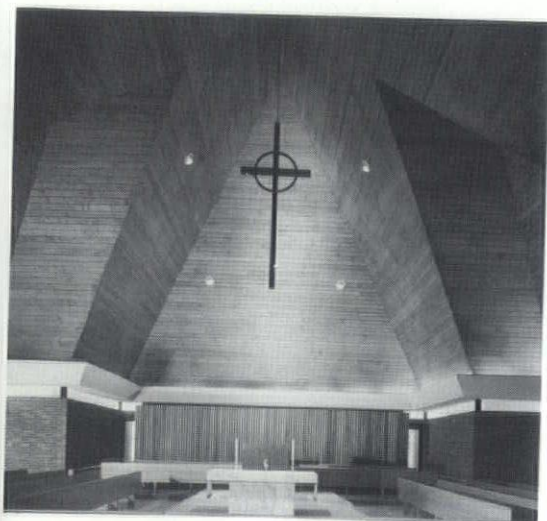
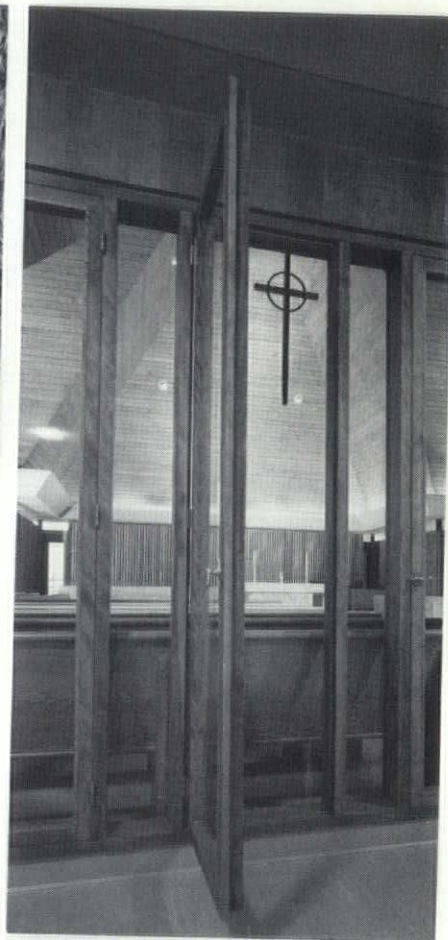


First Honor Award: Detroit Chapter

Chapel for University Presbyterian Church
Rochester, Michigan

Linn Smith Associates, Incorporated, Architects

Jury Comment: This building is appropriate in every way. It is coherent, has repose and great dignity, shows good overall consistency in detail and use of materials. It looks like a church—one you'd like to enter.

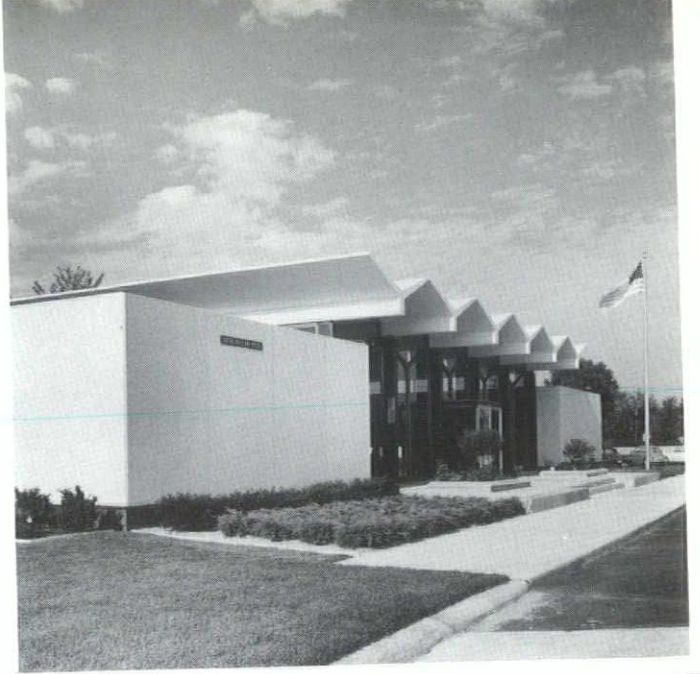


Award of Merit: Detroit Chapter

Bloomfield Township Branch
Manufacturers National Bank
Birmingham, Michigan

Louis G. Redstone Architects, Incorporated

Jury Comment: Dignity and clarity of plan distinguish this building and make it worthy of an award. Although the architecture is "playing over an old theme," it shows very adroit handling with refinement of the scheme.

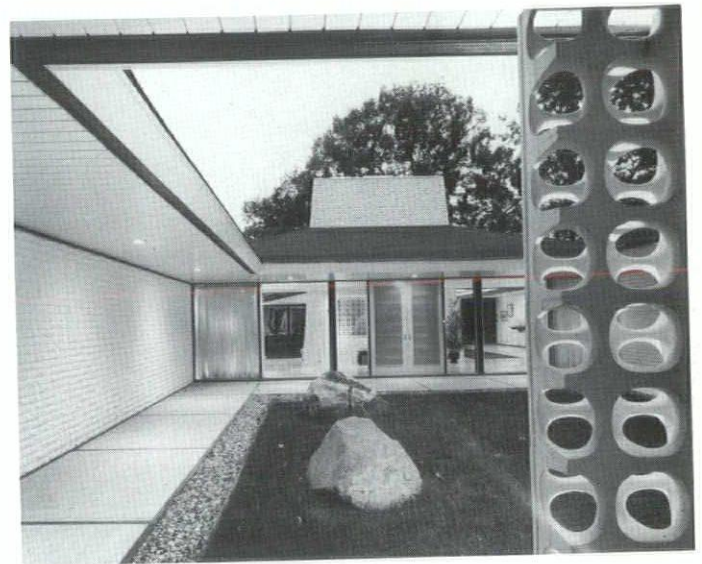


Award of Merit: Detroit Chapter

Residence for Mr. and Mrs. William B. Bachman, Jr.
Bloomfield Hills, Michigan

*Tarapata-MacMahon Associates, Incorporated
Architects*

Jury Comment: The excellent sequence of spaces and division of activities for private use and large scale entertaining admirably meet the requirements for living modestly as well as on a large scale. The overall, relatively simple charm is unusual in a house of this size.



Award of Merit: Detroit Chapter

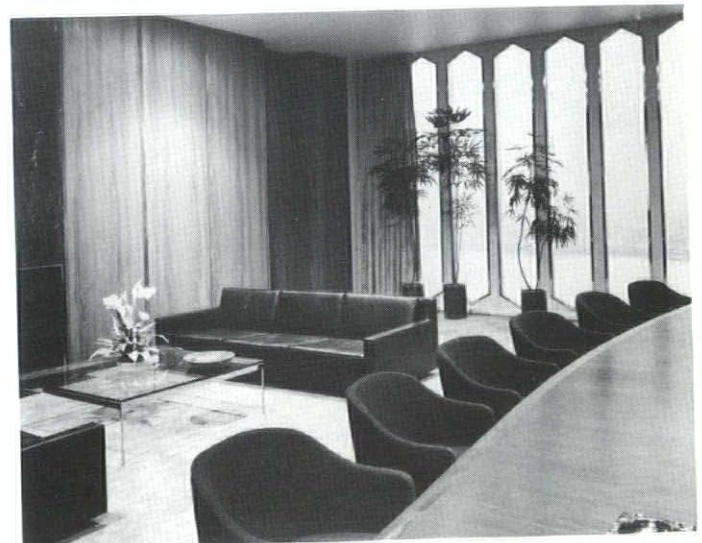
Office Building for Michigan Consolidated Gas Co.
Detroit, Michigan

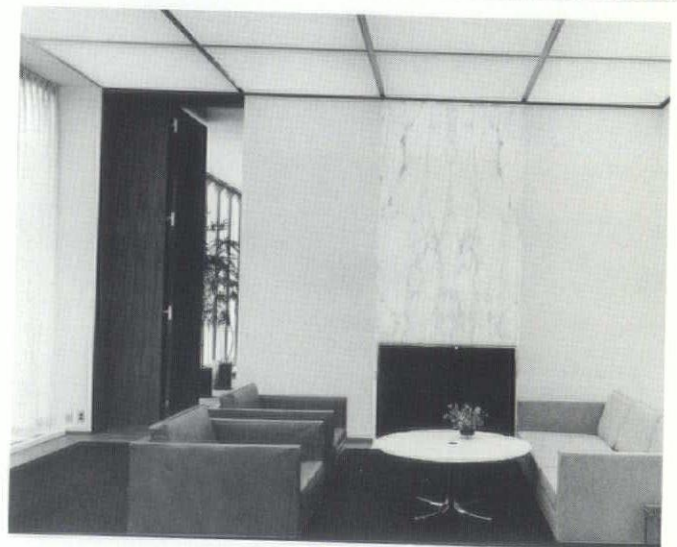
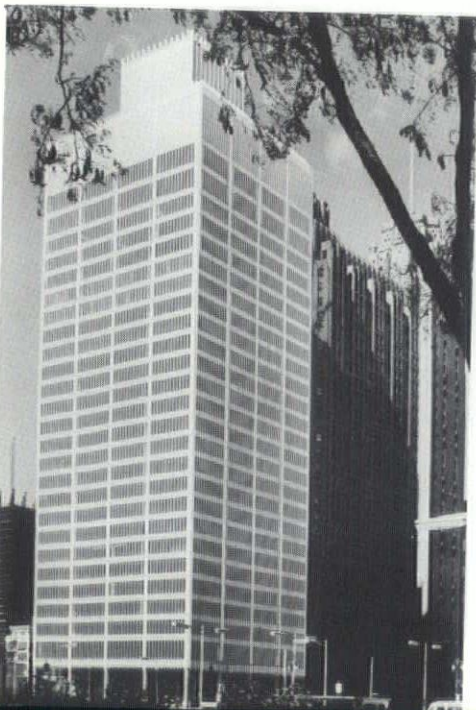
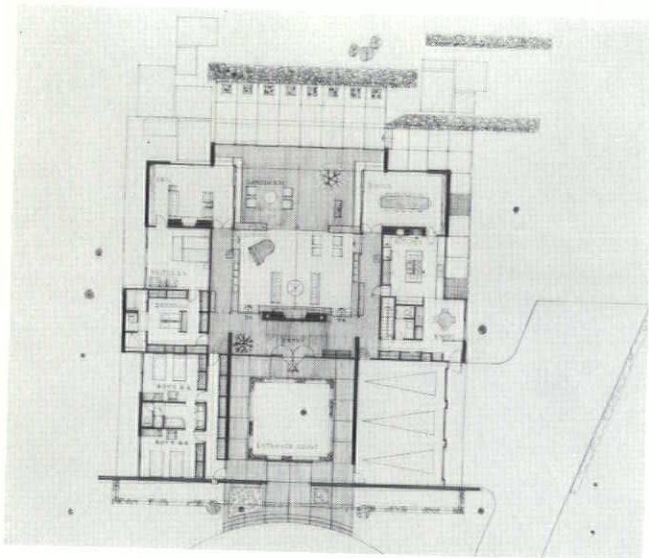
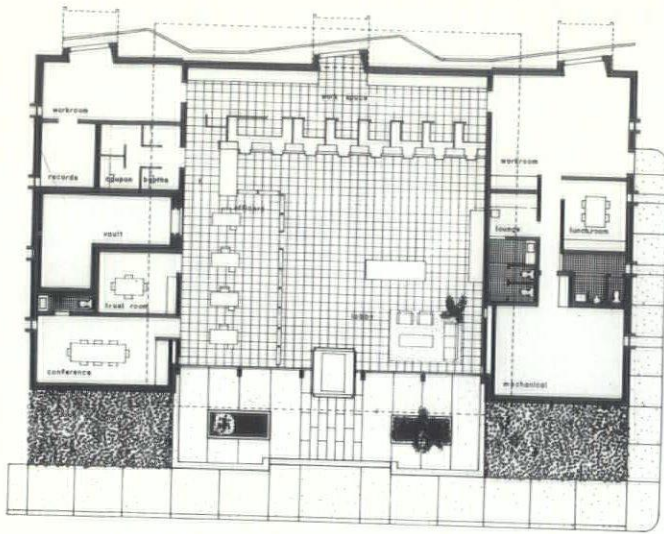
Minoru Yamasaki & Associates

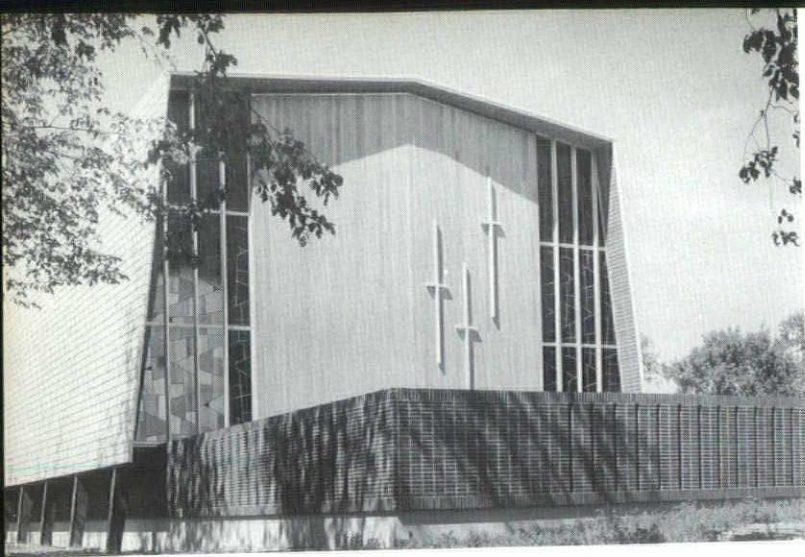
Smith, Hinchman & Grylls Associates, Inc.

Associated Architects and Engineers

Jury Comment: Elegant detail and handling of public spaces produce a feeling of joyfulness although the form of the building is somewhat routine, reflecting the influence of automotive styling and suffering from being overly decorative. Nevertheless—a distinguished building.



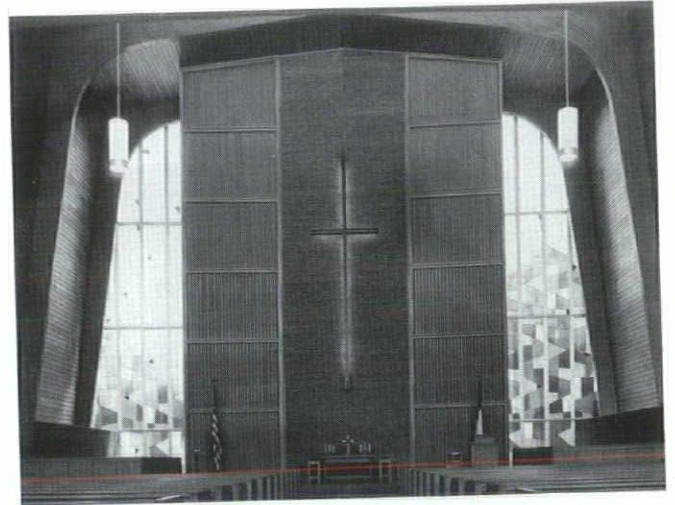
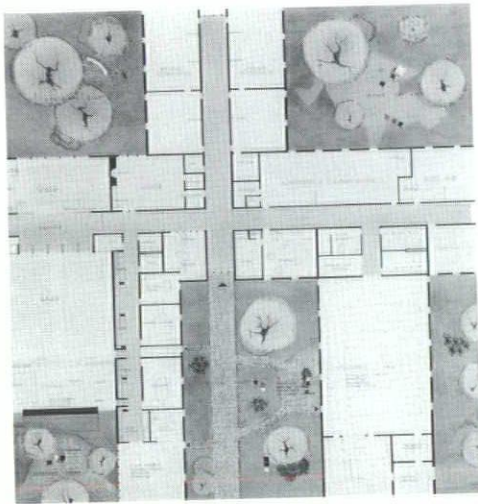




**Award of Merit: Grand Valley Chapter
First Presbyterian Church**
Grand Rapids, Michigan
Wold and Bowers, Architects

This ecclesiastical project possesses a well composed plan with good circulation and well integrated areas of garden and interior spaces. The exception being the desirability of seeing one of the garden courts more directly from some part of the church building.

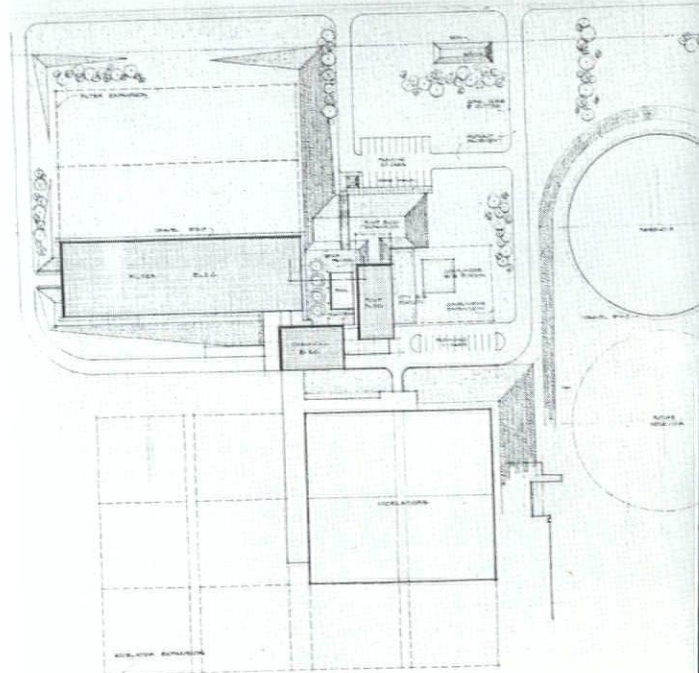
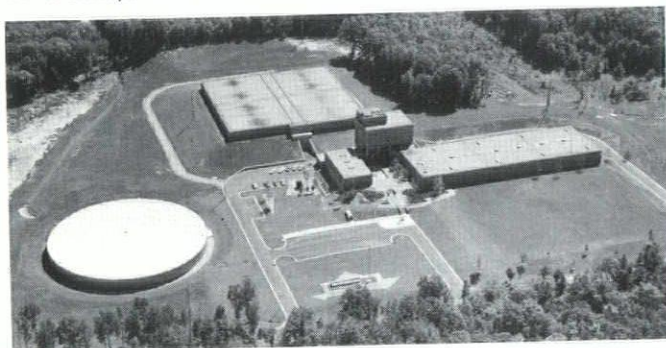
The design is commended for its unity and continuity in design and details, and for its restrained and tasteful use of materials. The structural system, the form, and the detail answer the needs of the program directly, simply, and in a feeling and spirit inspiring and appropriate for a church building.



**Award of Merit: Grand Valley Chapter
Lake Michigan Filtration Plant**
Grand Rapids, Michigan
Daverman Associates Architects

An interesting composition of buildings, plaza and landscape, from close up points as well as distant roadways. The jury felt the client deserved an award as well as the Architect for cooperation and pride in a project that becomes an enhancement to the total environment of the area around it.

It displayed an overall freshness in its approach compared to solutions of other plants of this nature. The interior of the lobby left room for improvement in its overall integration and the exterior treatment of the buildings could conceivably be more progressive. However, this concept had some of the properties that Eero Saarinen expressed when he said our Architecture is too humble. It should be prouder, more aggressive, much richer and larger than we see it today.





Honorable Mention: Grand Valley Chapter
Foremost Insurance Company Building
 Grand Rapids, Michigan
Baumgarten and DeWinter Architects

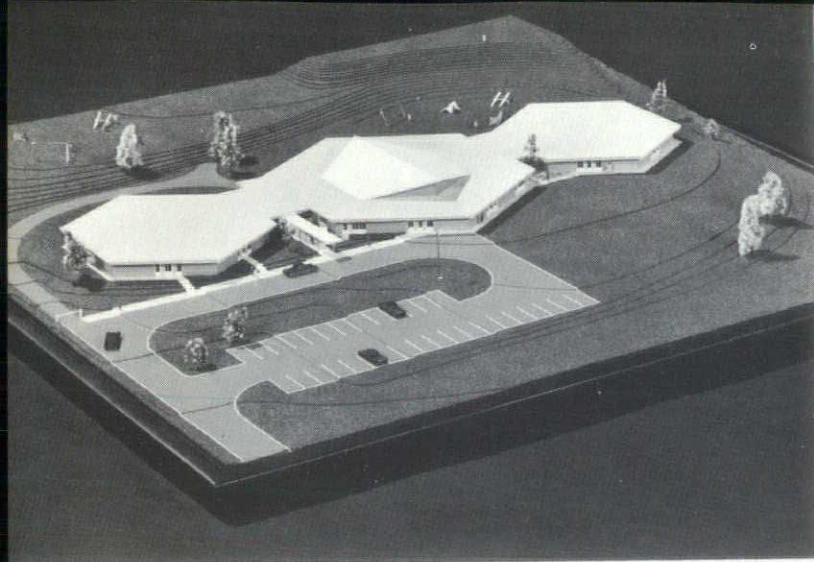
A commendable, strong, simple statement of plan and form. The jury again felt the Architects had done an excellent job on selling the owners on a scheme as open, flexible and uncluttered as this one. It was felt that while the exterior was pleasing, that a better feeling of integration was possible between curtain wall and gold facing of the cantilevered top; treatment of interiors and landscape plan were commended.



Honorable Mention: Grand Valley Chapter
Grace Reformed Church
 Wyoming, Michigan
Daverman Associates Architects

A noteworthy presentation, an edifice of strong, clean, sharp exterior and interior forms. Architecture of the interior has warmth in material, detail, and lighting. Interior photos and exterior photos incomplete. Source of light not clear but lighting effects are subtle and imaginative. A building of interesting character.



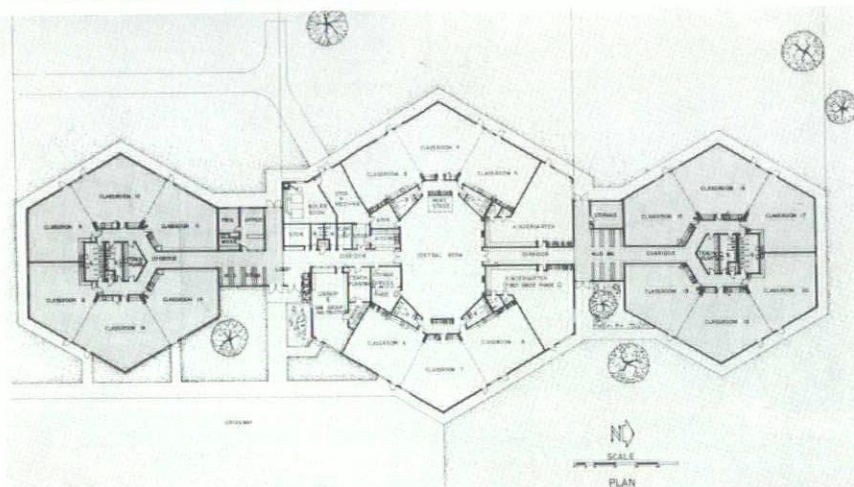


Honorable Mention: Grand Valley Chapter

Valley View Elementary School
Rockford, Michigan

Donnally W. Palmer, Architect

This project is commended for the fresh approach in its planning. The plan has unusual flexibility with many areas available for multi-purpose uses. The jury recognizes the basic economy of the structure but also the necessity of circulating through the main control room rather frequently. Having a higher central form without taking advantage of some outside lighting is questioned. The exterior expression is crisp and has a pleasant repose.

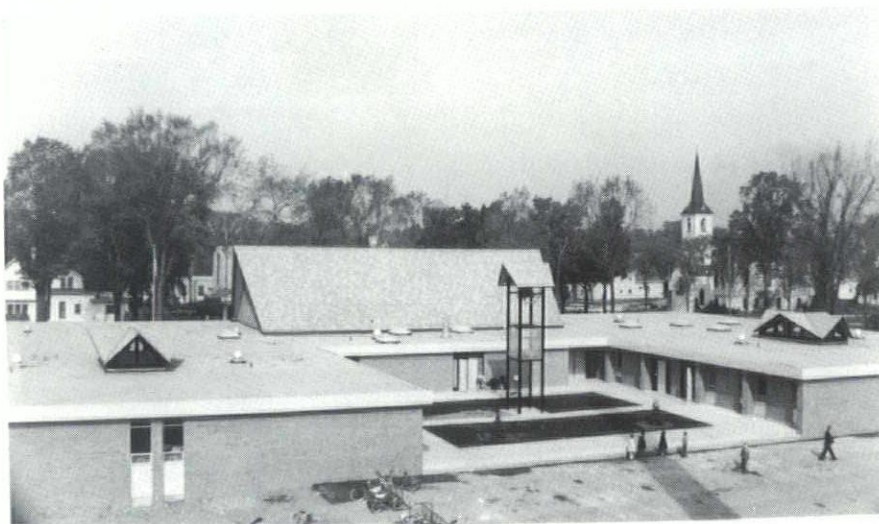


Honorable Mention: Grand Valley Chapter

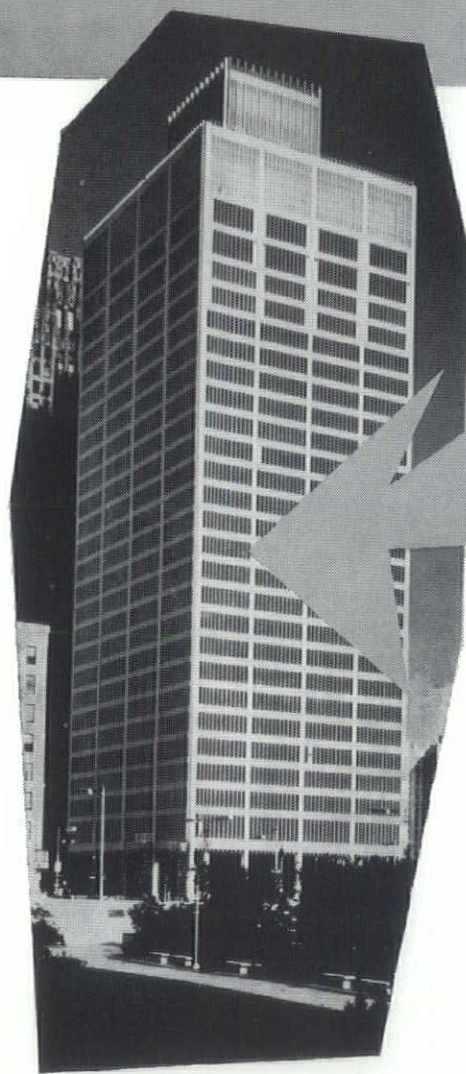
Central Elementary School
Grand Haven, Michigan

Vander Meiden and Koteles, Architects

An interesting, pleasant building that would be enjoyed by all those in this school program. Its scale details and materials show thought and care and there is a unity and continuity of feeling. The plan works reasonably well but the jury felt a more progressive approach would have been desirable. This building possesses a very fitting character for the purpose it was designed for, an Elementary School.



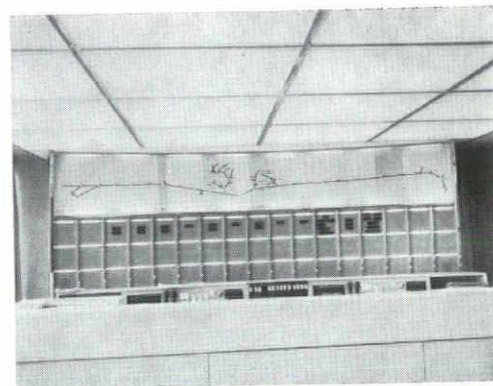
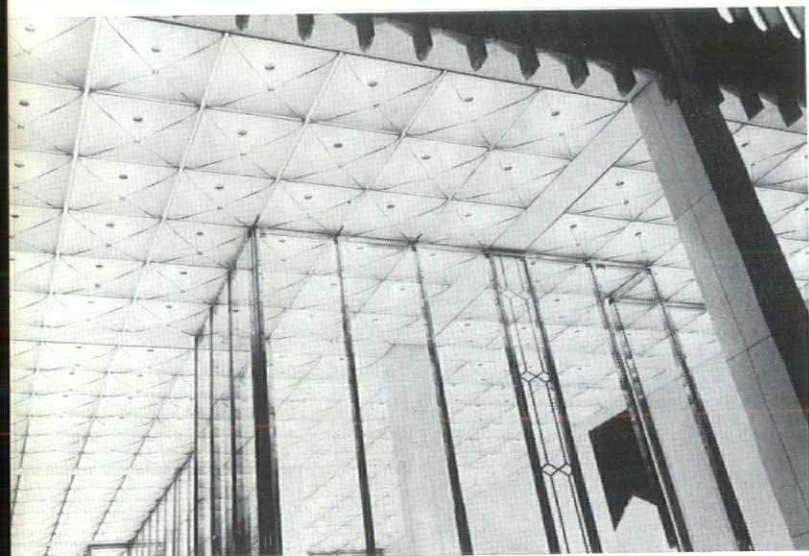
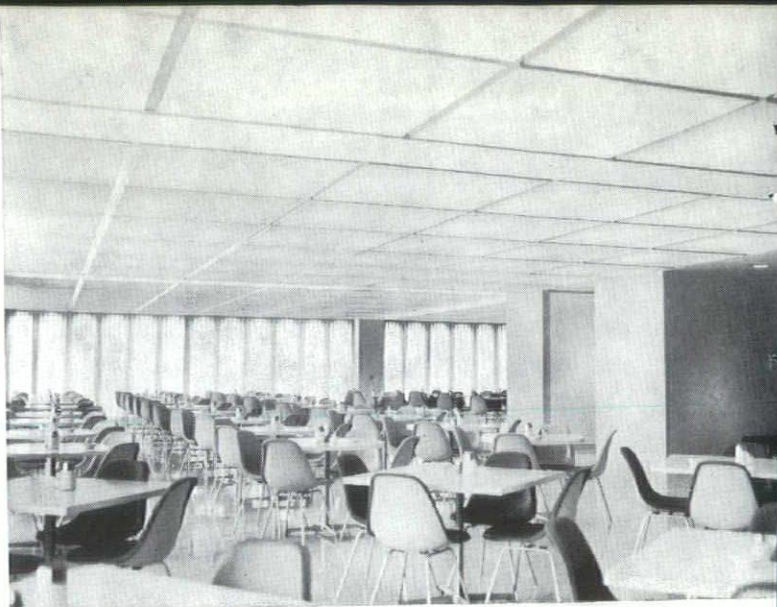
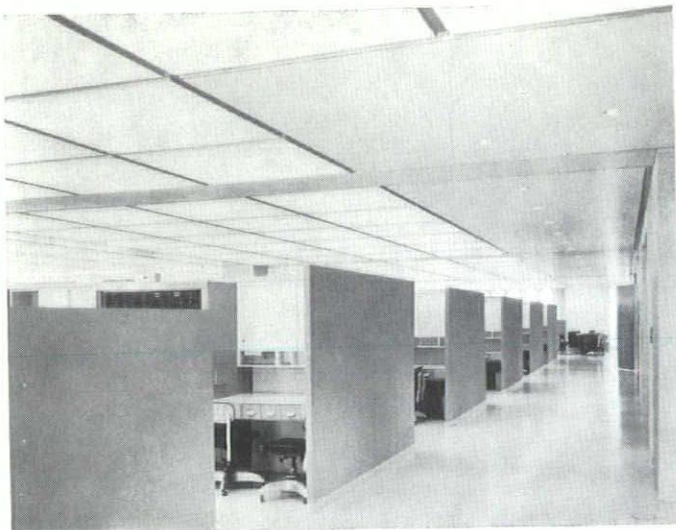
We have a whole department full of people who do nothing else but work with architects showing them ways where gas can improve not only homes but schools, hotels, hospitals, public buildings of all kinds. They'll give you the latest data on everything from year around Gas air conditioning units to installing a unique infra-red Gas heating system. Just call Michigan Consolidated Gas Company, 965-8000, Ext. 2976.



BE MODERN...FOR LESS...WITH GAS

MICHIGAN CONSOLIDATED GAS COMPANY





GASLIGHT?

Yes, the illusion of Gaslight has been accomplished in Detroit's newest structure. Hall Engineering Company, in cooperation with the creative talents of Minoru Yamasaki, D. Lee Dusell and James McDonald (Smith, Hinchman and Grylls), has appropriately installed the realistic illusion of gas jets in the main lobby ceiling of

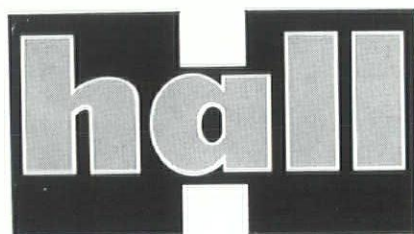
THE MICHIGAN CONSOLIDATED GAS COMPANY BUILDING

with imaginative use of spotlights and blue "plastic jewels." This is the first of many impressions of "creative illumination" you receive as you move from floor to floor.

The absence of "shadows" throughout the building is due primarily to the special egg-crate design of the panels covering the three-lamp fluorescent lighting fixtures installed within the cavity of the modular concrete waffle that forms the ceilings.

Hall Engineering Company used over 300 miles of wire and 28 miles of fluorescent tubes to accomplish the need for soft, diffused lighting.

When your next project calls for an experienced electrical contractor with many years of service to Michigan architects write or phone:



engineering co.
ELECTRICAL CONTRACTORS

21200 Telegraph Rd.

444-4650

Southfield, Michigan

NEWS

Flint Area Chapter Elects 1965 Officers

J. Luran Kretchmar has been elected president of the Flint Area Chapter, A.I.A. for 1965 succeeding Gerald E. Harburn. Vice president is Dale A. Suomela. T. Neel Eubank will serve as secretary and Archie Campbell will continue as treasurer.

Harburn and past presidents Herman J. Klein and Robert S. Gazall remain on the executive committee as directors. James E. Tomblinson was re-elected as a Chapter director and director of M.S.A. and M.A.F.

Stuckman Re-elected 1965 Mid-Michigan President

Richard H. Stuckman was reelected to serve a second term as president of the Mid-Michigan Chapter, A.I.A., at the Chapter's annual election of officers meeting November 4th. Charles W. Strieby will continue as vice-president of the Chapter.

Newly elected are Melvin Reiter, secretary, Wesley M. Webb, treasurer, Walter M. Laitala and Arthur J. Zimmerman, directors. Continuing as directors are John P. Baker and Robert L. Freeman.

Laitala will represent the Chapter on the Boards of the Michigan Society of Architects and the Michigan Architectural Foundation.

Flint, Saginaw Valley Schedule Joint Meeting

The Durant Hotel in Flint will be the scene of a joint meeting of members of the Flint Area and Saginaw Valley Chapters, A.I.A. on Monday, December 14th. Preceding dinner, Producers' Council will host a table top exhibit.

The program will feature Thomas H. Jean, Consultant on Urban Beautification for the Mott Program of the Flint Board of Education. Mr. Jean's subject will be "Urban Esthetics."

This joint meeting with another chapter is the second for the Flint group. Their November meeting was in Ann Arbor with the Huron Valley Chapter.

Kahn Office Cited in Student Exchange Program

Albert Kahn Associated Architects and Engineers recently received citations from the International Relations Committee of the Association of Collegiate Schools of Architecture "For outstanding contribution to architec-

tural education and international goodwill, through participation in the 1963 and 1964 Student Exchange Programs" sponsored by ACSA.

This summer work-study Student Exchange Program was initiated in 1963 with thirteen U.S. students working for eleven weeks in British architectural offices and a like number of students from the Architectural Association School in London spending eleven weeks in various offices throughout the U.S.

An unqualified success in 1963, the ACSA Exchange Program was broadened this past summer to include forty-two students. Half of these — fifteen from five British schools and six from Scandinavian colleges — worked in sponsoring U.S. firms from coast to coast, and twenty-one students from the U.S. worked in fifteen sponsoring offices in Great Britain, five in Sweden and one in Helsinki, Finland.

AKA participation in this program is part of the firm's continuing interest in recognizing and encouraging educational and artistic attainment through scholarship grants and awards.

Jickling & Lyman Awarded Grand Haven Project

Jickling & Lyman Architects of Birmingham have been commissioned to design a new library and cultural center complex for Grand Haven, Michigan. The firm was selected from a total of twelve interviewed for the project. Library consultants are Ralph A. Uveling and Charles M. Morhardt, director and associate director, respectively, of the Detroit Public Library.

Jickling & Lyman are currently engaged in work for the University of Michigan, Eastern Michigan University and the Chrysler Corporation.

Architects Change Firm Name

Kissinger-Holzhauer-Zigmanth, Inc., is the new name of the architectural firm of Kissinger-Kampner-Holzhauer, Inc. Stewart S. Kissinger, AIA, president, announced the termination of Burton Kampner with the organization and the election of Harold J. Zigmanth, AIA, as a principal in the firm. Zigmanth, a graduate of the University of Michigan, has been associated with the firm for two years after 13 years prior experience in Detroit area offices.

The offices of Kissinger-Holzhauer-Zigmanth, Inc., will remain at 1310 North Telegraph Road, Dearborn, Michigan.



No Detail Contributes More to the Quality of a Home Than Quality Windows

As important as the satisfaction and pride your client takes in the residence you design and engineer for him, is the impression conveyed to others. Andersen Windows not only have built-in style, but they have built-in performance. Don't invite trouble. Be definite in your specification of Andersens by name.

A complete line of Andersen windows is on display at our showroom. You are welcome to bring your clients. Nothing is sold here.



KIMBALL & RUSSELL INC.
WHOLESALE SASH AND DOOR DISTRIBUTORS
2127 FENNEL AVE. DETROIT 38, MICH. UN. 1-3480



Shown with APELSCOR Chairman Schoettley and board member MacMahon, are from l. to r.: Smith, Reinke, Leipens, Goodwin, Aizinas, Hobbs, Alles, Manschesky and Waskul.

SHAPES
coves - caps - jambs

COLORS
field - accent - trim

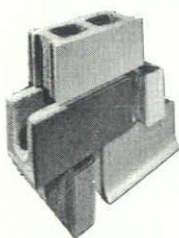
exact dimensions

nationally manufactured

locally distributed

precise color control

S SEE SWEET'S CATALOG 4g/Bu
for details or write direct:



Spectra-Glaze®

Reg. U.S. Pat. Off., Canada and other foreign countries. by THE BURNS & ROSSSELL COMPANY

Glazed Concrete Masonry Units

United Glazed Products (Michigan), Inc.
4500 Aurelius Road
Lansing, Michigan 48910

517-882-2463

New Registrants Honored At Presentation Ceremony

Newly registered architects, professional engineers and land surveyors were honored at a Certificate Presentation Ceremony for the State Registration Board sponsored by the Architects, Professional Engineers and Land Surveyors Council on Registration (APELSCOR) at the Engineering Society of Detroit, October 31.

Frederick J. Schoettley, AIA, APELSCOR chairman presided at the meeting. Principal speaker was Charles H. MacMahon, Jr., AIA, architect member of the Registration Board whose subject was "Your Responsibilities as a Professional." Certificates of registration were presented by Edwin H. Young, P.E. assisted by Henry G. Groehn, Executive Secretary of the Registration Board.

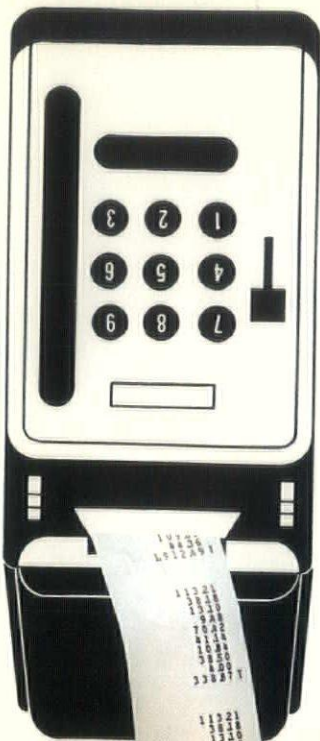
New registrants, their families and friends were greeted by members of the three professions during a social hour following the presentation ceremony.

Residents of Michigan registered as architects by examination include the following:

Stanley Aizinas, East Detroit.
Donald C. Alles, Detroit.
Bruce G. Boore, Dearborn.
Keith A. Brown, Birmingham.
Donald Peter Else, Birmingham.
Charles F. Fleckenstein, Jr., Royal Oak.
Edward D. Francis, Detroit.
John Goodwin, St. Clair Shores.
David L. Hanoute, Flint.
William S. Hobbs, Ann Arbor.
Roger A. Hummel, Suttons Bay.
Masao James Itabashi, Detroit.
Maynard L. Lemke, Essexville.
Indulis Liepins, Birmingham.
Alan E. R. Manschesky, Pontiac.
Donald A. Osgood, Southfield.
Elmer F. Reinke, Birmingham.
Bernard Remer, Southfield.
William Deane Smith, Detroit.
John Herbert Suhr, Birmingham.
William F. Thrall, Grand Rapids.
Michael W. Waskul, Detroit.
Larry W. Woehlke, Dearborn.
Theodore H. Yessayan, Detroit.
Tom W. Zoedes, Farmington.

Giffels & Rossetti Appoints Chief Architectural Designer

Louis Rossetti, FAIA, the Director of Architecture of Giffels & Rossetti, Inc., has announced the appointment of his son, L. A. (Gino) Rossetti, as the firm's chief architectural designer. The Detroit architectural and engineering firm, established in 1925, has a staff of 600 architects and engineers, and is presently engaged in the development of structures and facilities having an aggregate construction cost of more than \$400 million.



IS COST YOUR PROBLEM?

If so, cut cost with USS GARYLITE Lightweight Expanded Slag Aggregate. GARYLITE is the most economical lightweight aggregate you can buy. Initially, GARYLITE costs many dollars *less* per ton than most lightweight aggregates; and being light, it is economical to haul. Better still, USS GARYLITE is economical to *use*.

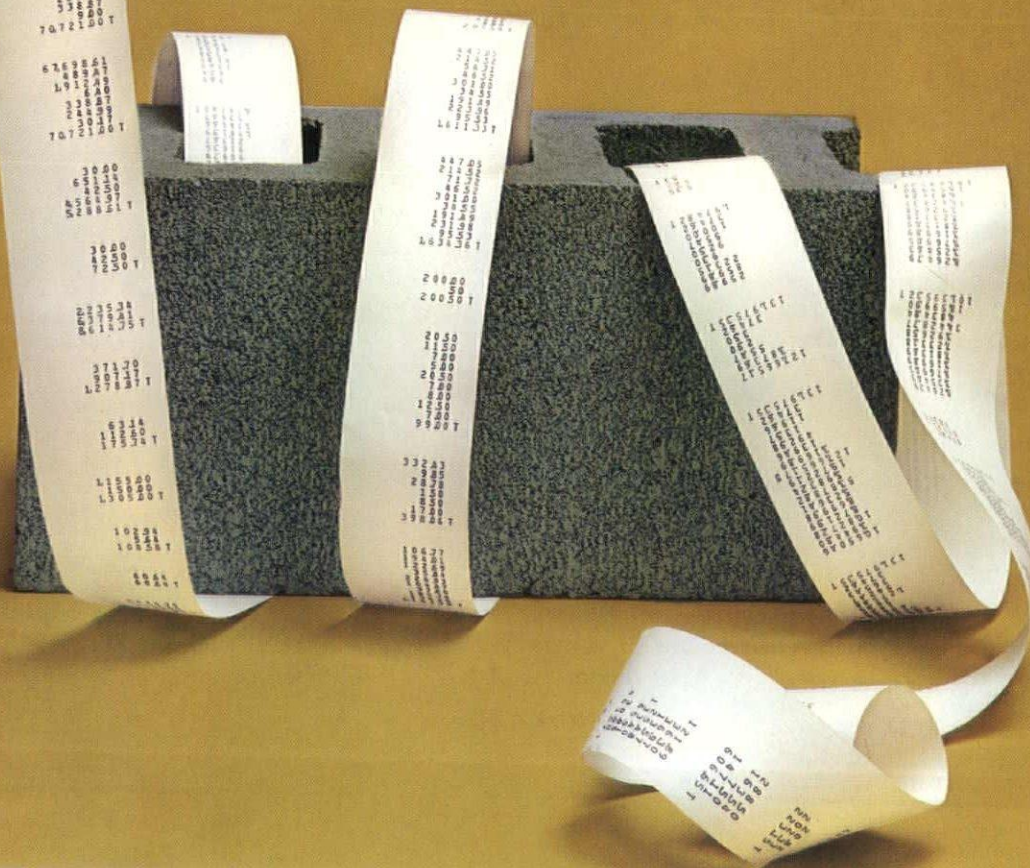
Concrete block manufacturers save because USS GARYLITE aggregate is available in both coarse and fine sizes—or blends—so one order usually fills every need. GARYLITE makes better blocks because it requires no special handling or equipment for mixing and molding, and it produces stronger *green* blocks that won't crumble or web-crack coming out of today's automatic block-making machines. Result: fewer rejects . . . more salable blocks per ton.

Builders save because 8-inch blocks made with USS GARYLITE weigh up to 12 pounds less than ordinary 8-inch blocks, so they cost less to ship, handle and lay. Masons can lay more lightweight units per day. And if a job calls for sawed blocks, sawing goes faster and saw blades last twice as long if the blocks are made with USS GARYLITE aggregate.

Building owners save, too, because blocks made with GARYLITE reduce dead load and often permit savings in structural steel and other building members. GARYLITE makes beautiful natural-colored masonry units, with pleasing textures that require no finishing—but paint, plaster and other coatings cover evenly and adhere well. Paneling and wood trim go on fast, too, because GARYLITE makes concrete more nailable than any other aggregate.

Add such other cost-cutting features as lasting beauty, 4-hour fire resistance, better thermal insulation and sound absorption—all provided by USS GARYLITE Expanded Slag—and you'll agree, it's the most economical lightweight aggregate you can buy. For more information, call or write United States Steel, Raw Materials Sales at any of the following offices: 208 S. LaSalle Street, Chicago, Illinois, Phone 236-9200; 209 Broadway Building, Lorain, Ohio, Phone 245-6897; 525 William Penn Place, Pittsburgh, Pa., Phone 391-2345. *USS and GARYLITE are registered trademarks.*

United States Steel 





Gino Rossetti attended the University of Michigan and the University of Detroit from which he received his B.S. in Architectural Engineering in 1959. He is a recipient of the Alpha Rho Chi Honorary Medal, is a member of Tau Beta Pi and has taken post graduate studies at the Cranbrook Institute of Design. On one of his visits to Europe he worked for a period of time in the studio of Calini & Montuori, architects, in Rome, Italy. His affiliations include the American Institute of Architects, the Michigan Society of Architects, and he is accredited with the National Council of Architectural Registration Boards. Architectural registrations are held in Michigan, Florida, Ohio, Texas, Idaho, Iowa, Maryland, Mississippi, Pennsylvania, Kentucky, Virginia and the District of Columbia.

Rossetti's present design assignments

include two 40-story apartment towers to be constructed in Detroit's eastside; a \$3.0 million fine arts building for Nazareth College, Rochester, New York; a medical science complex for Wayne State University; and a Federal-Mogul-Bower Bearings, Inc. corporate and divisional headquarters in Southfield, Michigan.

He recently developed the architectural concept of Chrysler's new 2.5 million sq. ft. stamping plant, now under construction in Sterling Township, Michigan; a new administrative building for Chevrolet at the Detroit Gear and Axle plant; an electronics plant for Honeywell at Fort Washington, Pennsylvania; and a Tampa, Florida meat processing facility for Lykes Bros.

Rossetti was also responsible for the architectural design of major segments of a \$15 million, 12-unit complex for St. John Fisher College at Rochester, New York; a \$10 million campus for Mercy College at Farmington, Michigan; and an Institute of Technology at Wright-Patterson Air Force Base.

PCA Appoints Wixson

Appointment of Gerald E. Wixson, of Warren, Michigan as Portland Cement Association structural field engineer in southeastern Michigan has been announced by Robert H. Lochow,



Michigan District Engineer for the Association. In his new capacity Wixson will serve architects, engineers and construction industry officials engaged in the use of cement and concrete for structural projects.

Prior to joining the Portland Cement Association staff, Wixson was affiliated with Swanson Associates, Bloomfield Hills architectural firm, Precast Products Company, Marysville, and American Prestressed Concrete, Inc., Centerline. He also was employed briefly as engineer-in-training for the city of Birmingham.

Wixson is a graduate of Lawrence Institute of Technology with a bachelor of science degree in civil engineering and is a registered Professional Engineer. He is chairman of the Warren City Planning and Urban Renewal Commission and is a member of the Engineering Society of Detroit.

MICHIGAN DRILLING CO.

for

- Complete Laboratory Testing
- Diamond Core Drilling
- Soil Test Borings For Foundation and Other Structures

14555 Wyoming Ave.
Detroit 38, Michigan
WEBster 3-8717

TURNER - BROOKS, INC.

Contractor for the

Dex-O-Tex

traffic bearing roof deck

on the

MICHIGAN CONSOLIDATED
GAS COMPANY BUILDING

—SINCE 1933—

A complete line of floor coverings
and acoustical materials.

9910 Dexter TOWNSEND 8-2470
Detroit 6, Michigan

M. Den Braven

■ Our 52nd Anniversary ■

— SHEET METAL —

— VENTILATING —

— AIR CONDITIONING —

9080 Alpine Avenue
Detroit 4, Michigan
WE 3-7494-5-6

Valentine Associates Announce Appointment

Charles M. Valentine Associates, Inc., Architects, Marysville, Michigan, have announced the appointment of Jack I. Lamb, AIA, as an Associate with the firm and James F. Bartlett as Chief Draftsman.

Lamb is a member of the Detroit Chapter, A.I.A., M.S.A., and C.S.I. His past experience includes schools, banks, institutional buildings, etc. while working in the offices of Crane, Kiehler and Kellogg, Detroit, Eero Saarinen, Bloomfield Hills and Linn Smith Associates, Birmingham. He was recently a principal in the firm of Denyes, Lamb, and Pearson, Architects, Pontiac.

Bartlett has served as Chief Draftsman and Office Manager for the firm of Robert Harter Snyder & Associates, Southfield, and had been employed by Eberle Smith Associates, Detroit, and the Linn Smith office.

Baessler Joins H E C & S

The appointment of Frederick Baessler as a project administrator on the staff of Harley, Ellington, Cowin and Stirton, Inc. has been announced by Julian R. Cowin, president.

A graduate of the University of Michigan (B.A., Architecture, 1935), Baessler is a native of Grand Rapids, Michigan, and has made his home in New York, Michigan and California. His architectural activities have taken him to South America, Japan and England as well as to many states throughout this country.

Among the projects with which he has been associated are the Verazanno Narrows Bridge (Brooklyn-Staten Island) which, when completed next year, will be the world's biggest bridge, and the Cinerama process of motion picture exposition, for which he was responsible for the design and construction of theatres in the United States, Japan and England.

Baessler's initial assignments with HEC&S include work on the new Allen Park City Hall, the Chemicals Laboratory Facility for the Dow Chemical Company, and Kennedy Plaza, senior citizen housing for the City of Dearborn.

Additions to Flint Cultural Center Started

Ground has been broken for the two newest major units in the Flint College and Cultural Center — the James H. Whiting Auditorium and the Alfred P. Sloan, Jr. Panorama of Transportation.

The \$2.7 million Whiting Building will be a theatre-type community auditorium seating 2,100. It is patterned after the old European music halls,

of high rectangular shape with four tiers of narrow balconies on three sides, putting all seats as close as possible to the stage.

The \$339,000 Sloan Building will be the first of three units planned for a general museum in the Center. Two adjoining wings will be added later. The museum will feature Flint's pioneering role in the automobile industry.

The architect for both structures is Smith, Hinchman & Grylls, Associates, Inc., Detroit.

Twin Mall Centers Formally Opened

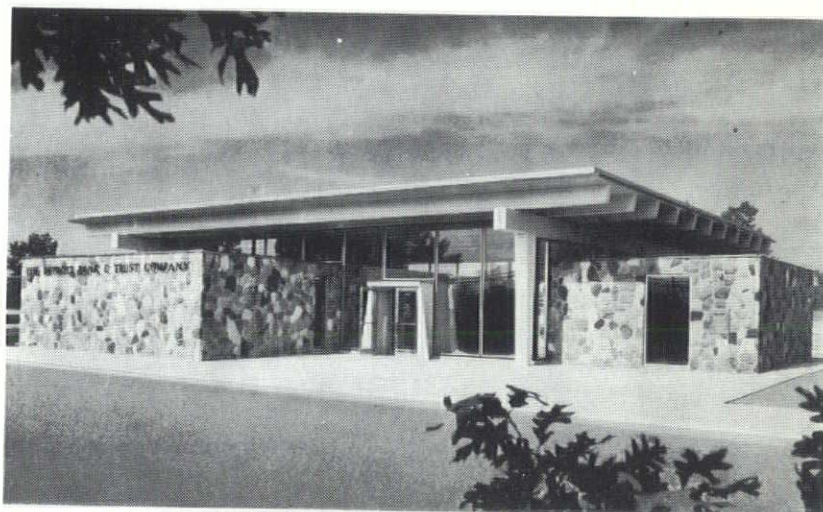
Ribbon cutting ceremonies at Livonia Mall at Seven Mile and Middle-

belt Road and Macomb Mall, Gratiot at 13/12 Mile Road, Roseville, Thursday, October 29, brought a new concept in shopping to close to half a million residents of each area. The wares and services of 40 merchants are available under one roof. All stores face spacious garden courts or connecting malls which are completely enclosed, heated in winter, air-conditioned in summer, and temperature controlled at 72 degrees the year round.

The formal opening of the twin Malls culminates over two years of planning and construction. In June 1962, Sears, Roebuck & Company announced, jointly with Crowley's that the two companies would be the major occupants in the proposed Livonia and Macomb Malls.

(Continued).

PRESTRESSED CONCRETE built a better place to do business



DETROIT BANK & TRUST CO. BRANCH OFFICE
Eberle M. Smith Associates, Architect

Three different forms of prestressed concrete structural components were used in this modern banking office. These included the single tee members, of which the roof and interior ceiling are entirely composed, and the supporting beams and columns.

The versatility and good looks of prestressed construction are evident in the clean-cut lines of the exterior. Just another example of why this material is winning such great acceptance with architects and engineers.

Prestressed concrete is available in a variety of forms and shapes to accommodate a wide expression of design. It also cuts construction costs by permitting more efficient, speedier erection and keeps on paying dividends over the years. These pile up in the form of lower insurance rates and reduced maintenance costs — plus greater returns from more usable space.

AMERICAN PRESTRESSED CONCRETE, INC. Subsidiary of DeClerk Industries

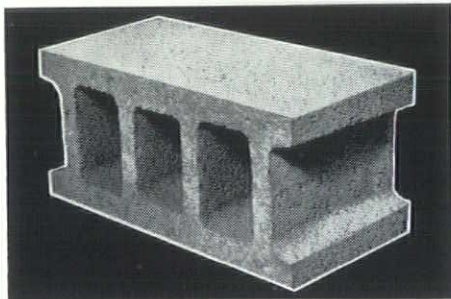
6419 E. 10 Mile Rd., Centerline, Mich. • SLocum 7-3815

Turner Engineering Company

**DEPENDABLE
ELECTRICAL
CONSTRUCTION
FOR 48 YEARS**

464 Brainard Street
DETROIT 1, MICHIGAN
TEmple 1-0470

**seal it. cushion it.
insulate it.**



**your Wesco Man has
the products to help you.**

Sales Representatives and Distributors of:

ANTI-HYDRO Emery Aggregates for Floors
B. F. GOODRICH Vinyl Flashings
and Water Barriers
DOW CORNING Silicone Rubber Sealant
MASTERCRAFT Precast Terrazzo
REVERE Dryseal Copper Flashings
STAIRBUILDERS Prefabricated Stair Forms
WILLIAMS Seals, Gaskets and
Everlastic Products

wesco, inc.

486 W. Eight Mile Road • Hazel Park, Michigan
Telephone: JO 4-6452 & LI 6-2467

Affiliated with Williams Equipment and Supply Co., Inc.



A New Company

A New Service

**A New Steel
Source for
Michigan Architects**

Engineering

Fabrication

Erection

**INDUSTRIAL
SERVICES INC.**

18450 LIVERNOIS
DETROIT, MICH.
863-3353

MR. RAY LITRICHIN—President

For Beauty, Distinction
and Permanence

**CENTURY
BRICK COMPANY**

Sam Burtman • Don Forrest

14910 Linwood Ave.
Detroit 38, Mich.
861-8200

Louis G. Redstone Architects, Inc., designed both Malls. Sketches were published in the August 1964 issue of the Bulletin.

Knoll Adds Mies Pieces

Knoll Associates, Inc. has announced the addition of four major pieces to the Mies van der Rohe collection: the Tugendhat chair (1930, Tugendhat house, Brno, Czechoslovakia), the MR dining and lounge chairs (1927, Exposition de la Mode, Berlin, Germany), and the couch (1931, Berlin Building Exposition). All four are available in authorized versions for the first time in the United States.

The reception by architects and interior designers of the Barcelona group and the Brno chair has prompted Knoll to complete this remarkable collection of classic modern furniture.

The timeless beauty of each piece reflects the architect's genius in proportioning structural and functional elements and his understanding of the nature of materials. Mies van der Rohe's directness and dignity are reflected here no less than in his great buildings.

Each piece has been made with the production precision of Knoll's design engineering and manufacturing facility according to exacting specifications set by the designer. The entire collection will soon be available in Knoll Showrooms throughout the country.

Palmer Re-elected President of AISC

Robert C. Palmer, president of the R. C. Mahon Company, Detroit, Mich., has been re-elected president and a director of the American Institute of Steel Construction, it was announced recently at the Institute's headquarters in New York City.

As president of AISC, Mr. Palmer directs the national organization representing some 300 firms which account for the major portion of the annual output of fabricated structural steel in the United States. He was first elected to the presidency in 1963.

Originally from Afton, N.Y., he was graduated from Cornell University where he was awarded a degree in Mechanical Engineering. Prior to joining The R. C. Mahon Company in May 1961, he was president of the Ingalls Iron Works Company, Birmingham, Ala., the company he joined in 1934.

Mr. Palmer became a member of AISC in 1934 and was elected to the Board of Directors in 1955. He became second vice-president in 1960 and first vice-president in 1961.

He is also president of Mahon International, Inc., and a trustee of The R. C. Mahon Foundation.

Modu-Wall, Inc. Changes Name to NAARCO

R. L. Rizzard, marketing manager, has announced that Modu-Wall, Inc., Parchment, Michigan, has changed its name to North American Aluminum Corporation, effective November 9th. In the future, the company's architectural products will be marketed under the trade name NAARCO.

Their 1965 catalog in Sweets will reflect the change in name.

Rizzard stated, "Modu-Wall, Inc., since 1957 has been an increasingly important name for dependable curtain-wall systems, providing architects with 'a wealth of design freedom in creating lasting exteriors.' It is our goal to provide an ever-expanding line of NAARCO products which set new standards in providing freedom of architectural expression and product quality."

New UMI Plant Under Construction

Construction has begun on a new \$1.1 million plant for University Microfilms, Inc. which Eugene B. Power, founder and president of the company, says, "will be the most modern and complete microfilm laboratory in the world." The building will contain 76,000 square feet of floor space, nearly three times the space of the present

UMI plant and office building. The site of the new building, just outside Ann Arbor in Scio Township, has an area of 28 acres.

Power started University Microfilms, Inc. in 1938 and pioneered in the use of microfilm technology for the preservation of out-of-print books, periodicals, scientific and technical journals and other printed materials. Today the firm's services include publishing on demand by microfilm, xerography and lithography. The company's expansion is backed by the Xerox Corporation, which acquired ownership of UMI in 1962.

Architects for the new building are Alden B. Dow Associates, Inc., Midland. General contractor is Spence Brothers of Saginaw.

OBITUARY

Calvin R. Sills

Military services were held for Calvin R. Sills, 39, Port Huron architect, who died of cancer October 25th.

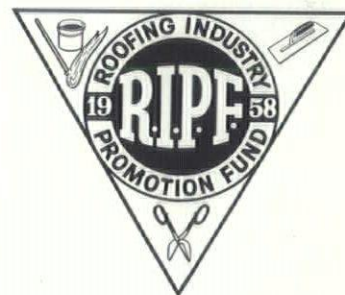
Charles Schoor Post No. 796, VFW and Leo F. White Barracks No. 659, Veterans of World War I, conducted military services at Lakeside Cemetery.

A Professional Associate member of the Detroit Chapter, A.I.A., Sills had formerly been associated with Wyeth & Harman, Port Huron firm. He is survived by his daughter, Candace.

ADVERTISERS INDEX

Aerofin Corporation	18
American Prestressed Concrete, Inc. 15	
Architectural Arts (Division of Grafek Arts)	20
Bortolotti, William & Sons, Inc. ...	20
Blumcraft of Pittsburgh	C4
Century Brick Company	16
Den Braven, M	14
Detroit Edison Company	C3
Duwe Precast Concrete Products ..	2
Hall Engineering Company	10
Hudson, J. L. Company	C2
Industrial Services, Inc.	16
Kimball & Russell, Inc.	11
Michigan Consolidated Gas Company	9
Michigan Drilling Company	14
Roofing Industry Promotion Fund	17
Sprinkler Irrigation & Supply Company	20
Structural Clay Products Institute ..	13
Turner Brooks, Inc.	14
Turner Engineering Company	16
United Glazed Products (Michigan), Inc.	12
United States Steel Corporation ...	19
Wesco, Inc.	16

What is this?



- This is the NEW symbol of R.I.P.F.
- This is the symbol of QUALITY
- This is the symbol YOU should look for when you need an experienced, reliable contractor to bid your next ROOFING, SHEET METAL or WATERPROOFING job.
- Learn to rely on the contractor who displays this symbol. He has the experience and know-how to solve your problems.

Roofing Industry Promotion Fund

Burleigh Grime
Executive Secretary

8469 E. Jefferson Ave.
Detroit 14, Mich.

Area Code 313
822-0700

Michigan Consolidated Gas Company

DETROIT, MICHIGAN

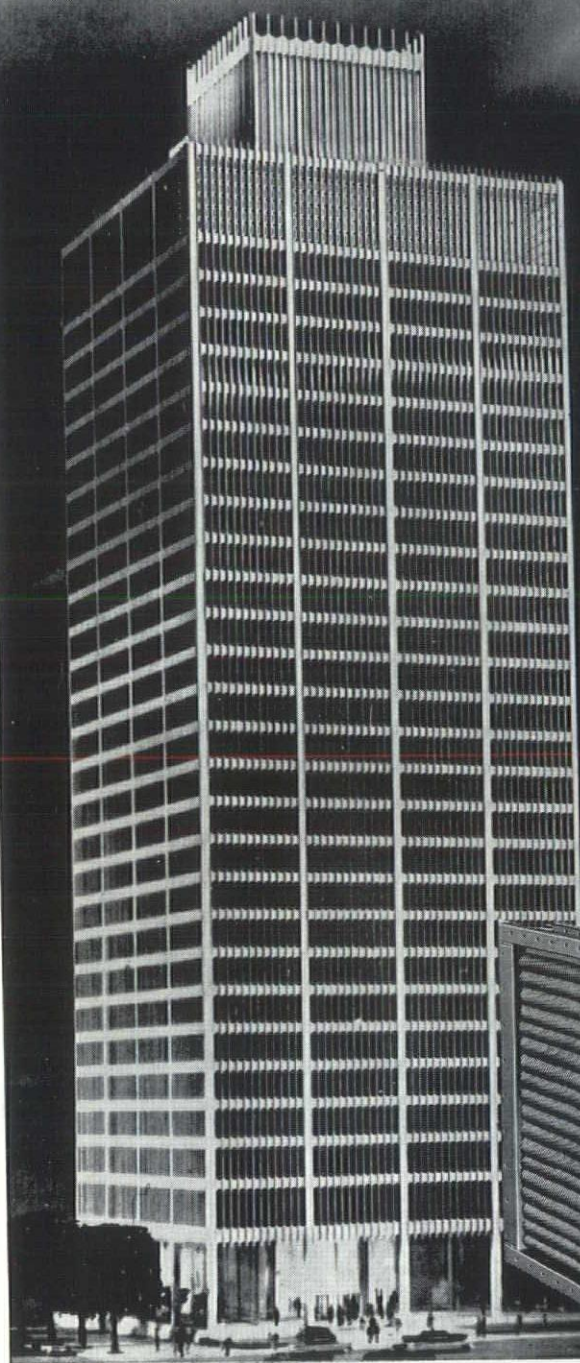
New Forms and Systems Achieve
Striking Effect of Soaring Grace

AEROFIN INSTALLED

to temper the air delivered to the unique new
variable volume reheat window units.

Modern smooth-fin design of Aerofin coils permits ample heat-exchange capacity in limited space. Where desired, it also permits the use of high air velocities without turbulence or excessive resistance.

Aerofin performance data are laboratory and field proved. You can safely specify Aerofin coils at full published ratings.



Minoru Yamasaki—Smith, Hinchman & Grylls
Associated Architects and Engineers
Bryant & Detwiler Co.
General Contractors
Glanz & Killian Co. • J. Brodie & Sons
Mechanical Contractors



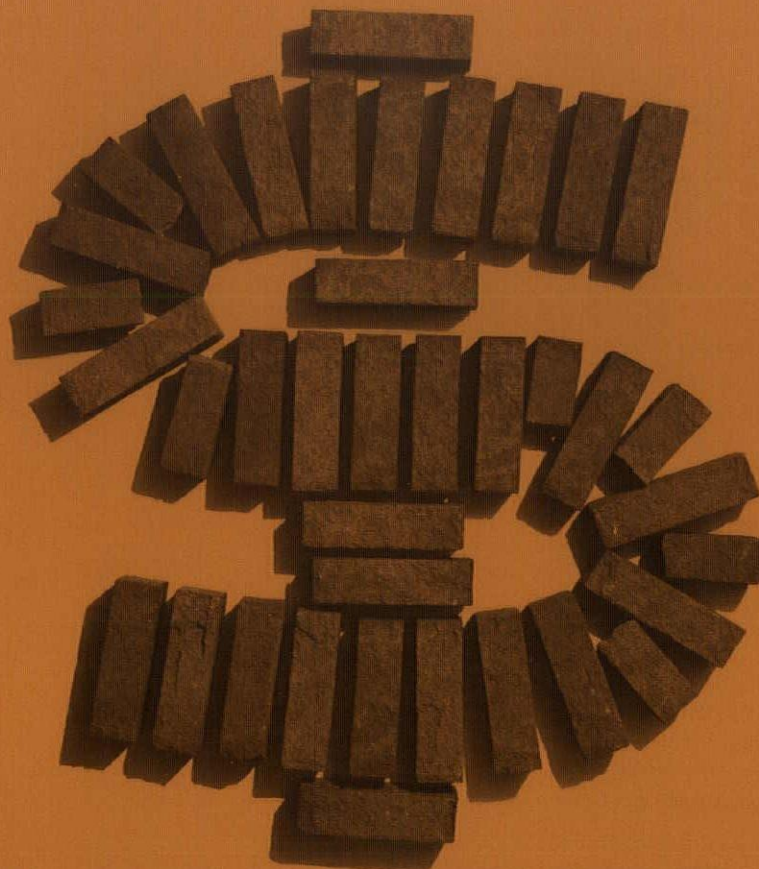
Aerofin hot-water heating coils (illustrated) and chilled-water cooling coils contribute to the year-round comfort of this outstanding new building.

AEROFIN CORPORATION

101 Greenway Ave., Syracuse 3, N. Y.

Aerofin is sold only by manufacturers of fan system apparatus. List on request.

ENGINEERING OFFICES IN PRINCIPAL CITIES



HOW MUCH DO BRICK REALLY COST ?

This is a question which might fall into the same category as, "How blue is the sky?"

For the architect however, it leads into some other questions that should be explored.

Q. How should initial cost of brick walls be figured?

A. On a square foot in-the-wall basis. Individual brick have a wide price range but hardly anyone but a brick manufacturer is interested in the properties or cost of one individual brick. On the other hand everyone, from the architect to the general public, is interested in the over-all wall and the way that wall looks and performs. Initial costs therefore should be figured on a square foot in-the-wall basis. On this basis the finest quality brick provide the architect with one of the most economical building materials available.

Q. Should initial costs be the only ones considered?

A. Initial costs are not the whole story. The building must be maintained, heated and cooled. The

Ultimate Cost Concept of economic analysis takes into consideration 15 separate factors to arrive at the actual cost of a building. These factors include initial cost, value of money, depreciation, maintenance costs, heating and cooling costs, insurance and taxes. A recent study made on a seven story building shows that on a tax paying structure the ultimate cost of a brick and tile cavity wall would be \$4.60 per square foot against \$7.86 per square foot for metal panel and \$18.29 for glass. On a non-taxable building (such as a school) the ultimate cost ranged from \$5.26 for the brick and tile cavity wall to \$30.02 for glass!

How much do brick cost? It depends on the type of wall, how they are used and a number of other factors. But of this you can be sure - - - brick give you color, texture, flexibility, strength and durability, plus true economy. This is a combination almost impossible to beat.

REGION 4 - STRUCTURAL CLAY PRODUCTS INSTITUTE
2556 CLEARVIEW AVENUE, NORTH WEST, CANTON, OHIO



CHAGRIN FALLS, O.: 15200 S. DEEPWOOD LANE
PITTSBURGH, PA.: 807 STANDARD LIFE BLDG.

Pretest

Div. of WM. BORTOLOTTI & SONS, INC.

...is more than just a trade name

The name expresses our concept of a new approach to the manufacture of polyester aggregate surface panels.

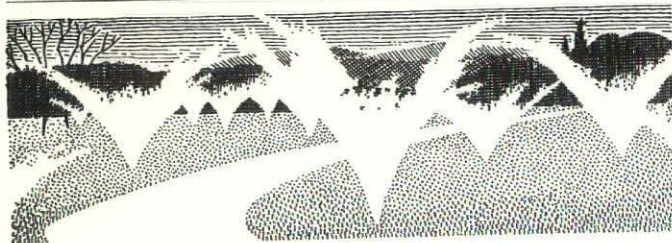
It is common practice for architects to specify that all of the aggregate for a precast panel project be ordered from the same source all at the same time. This is done to minimize the possibility of any difference in appearance of the finished panels. We feel this same line of thinking should also apply to the polyester matrix material. The thermosetting resinous material used for the matrix of PRETEST panels is obtained from one source—PREMIXED AND PRETESTED under factory conditions to assure maximum control of thermal properties and color stability.

Sales Representatives

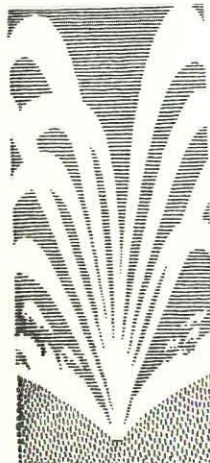
J. M. POWER COMPANY

WO 2-2940

BOOK TOWER • DETROIT, MICHIGAN 48226



SPECIFY A GREEN LAWN...
for your next commission



INCLUDE



Permanently installed Buckner sprinkler systems or hose sprinklers are providing better looking, easier to maintain turf for leading building areas all over the world. In your next commission insist on genuine Buckner sprinklers, key to successful irrigation.

■ Plans and specifications available to architects and engineers.

**SPRINKLER IRRIGATION
SUPPLY COMPANY**

1316 N. CAMPBELL RD. ROYAL OAK, MICHIGAN
"Serving With Integrity Since 1925"

CALENDAR

December

- 2 Mid-Michigan Chapter—Tarpoff's—12:00 M—W. B. Ford "Space Planning and Business Interiors."
- 7 Saginaw Valley Chapter—Midland Country Club—Midland
- 8 Huron Valley Chapter—8:00 PM—Ann Arbor Federal Savings & Loan Association Board Room
- 9 Detroit Chapter Board—E.S.D.—1:30 PM
- 10 Detroit Chapter and Producers' Council Christmas Dinner Dance—7:00 PM—Plum Hollow Country Club
- 14 MSA Board—Organizational Meeting—12:30 PM—Durant Hotel—Flint
- 14 Grand Valley Chapter—Christmas Party—Grand Rapids
- 14 Flint Area & Saginaw Valley Chapters—Joint Meeting—Durant Hotel, Flint—Producers' Council Table Top Display—Thomas H. Jean, "Urban Esthetics."

March 1965

- 17 thru 19—MSA 51st Annual Convention—Statler Hilton Hotel, Detroit

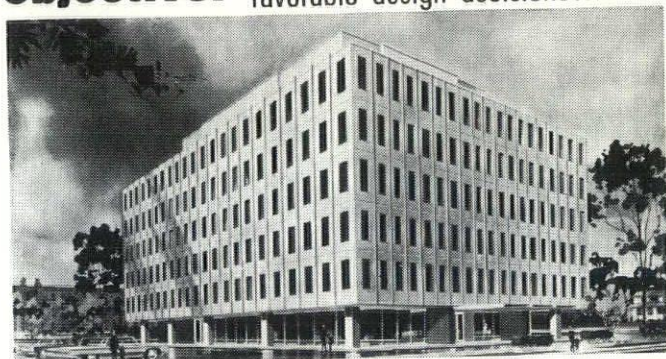
June

- 13 thru 18—AIA National Convention and XI Pan-American Congress of Architects—Sheraton Park Hotel—Washington, D.C.

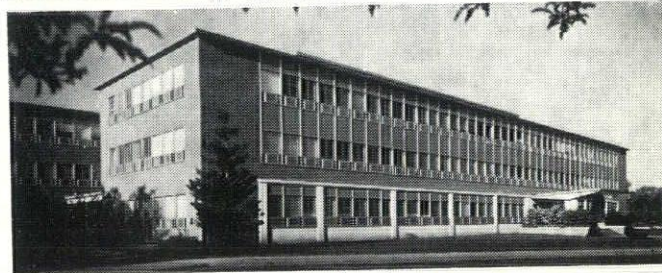
August

- 5 thru 7—MSA 22nd Annual Mid-Summer Conference—Grand Hotel—Mackinac Island.

Objective: To enhance and influence favorable design decisions...



Method: Utilize the skills of specialists in architectural art and photography

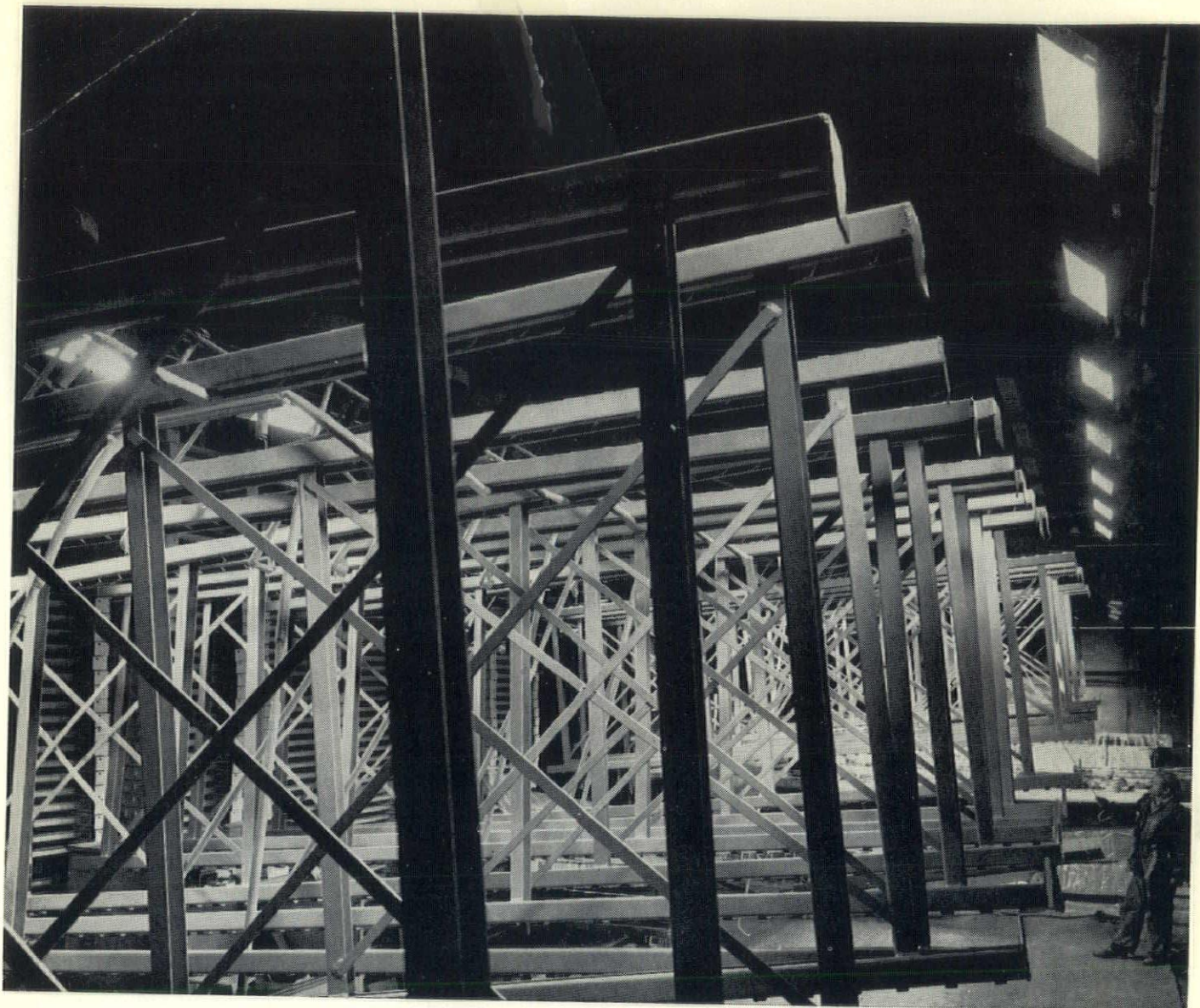


Now entering our second decade of outstanding service to American Architects.

Architectural Arts

5332 S. Pennsylvania Ave., Lansing, Michigan
Phone: 517-882-2408 Division of Grafek Arts, Inc.





INFRARED LAMPS

**DRY THE PAINT, LIGHT THE WORK AREA,
WARM THE EMPLOYEES**

AT PALMER-SHILE CO., DETROIT, MICH.

The Palmer-Shile Co. manufactures steel storage racks. And paints them. They had a problem. The racks are dip-painted in an unheated, uninsulated building. Large exterior doors nearby are opened frequently. How to speed the drying process in such an environment? The answer: infrared lamps.

Heat generated by infrared lamps is radiant, warms only the objects it strikes. The surrounding air does not absorb the warmth. So paint drying operations are accelerated. In addition, the infrared lamps illuminate the

working area and keep the employees comfortably warm. Even more important, drying lamps are safe to use in the presence of solvent vapors.

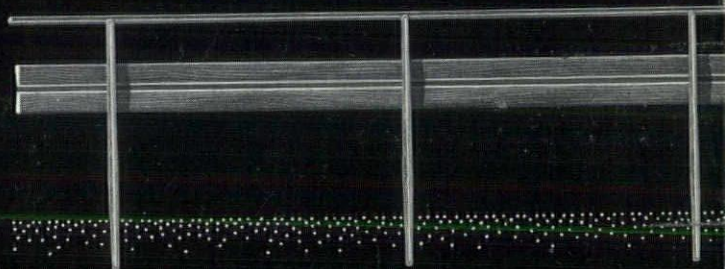
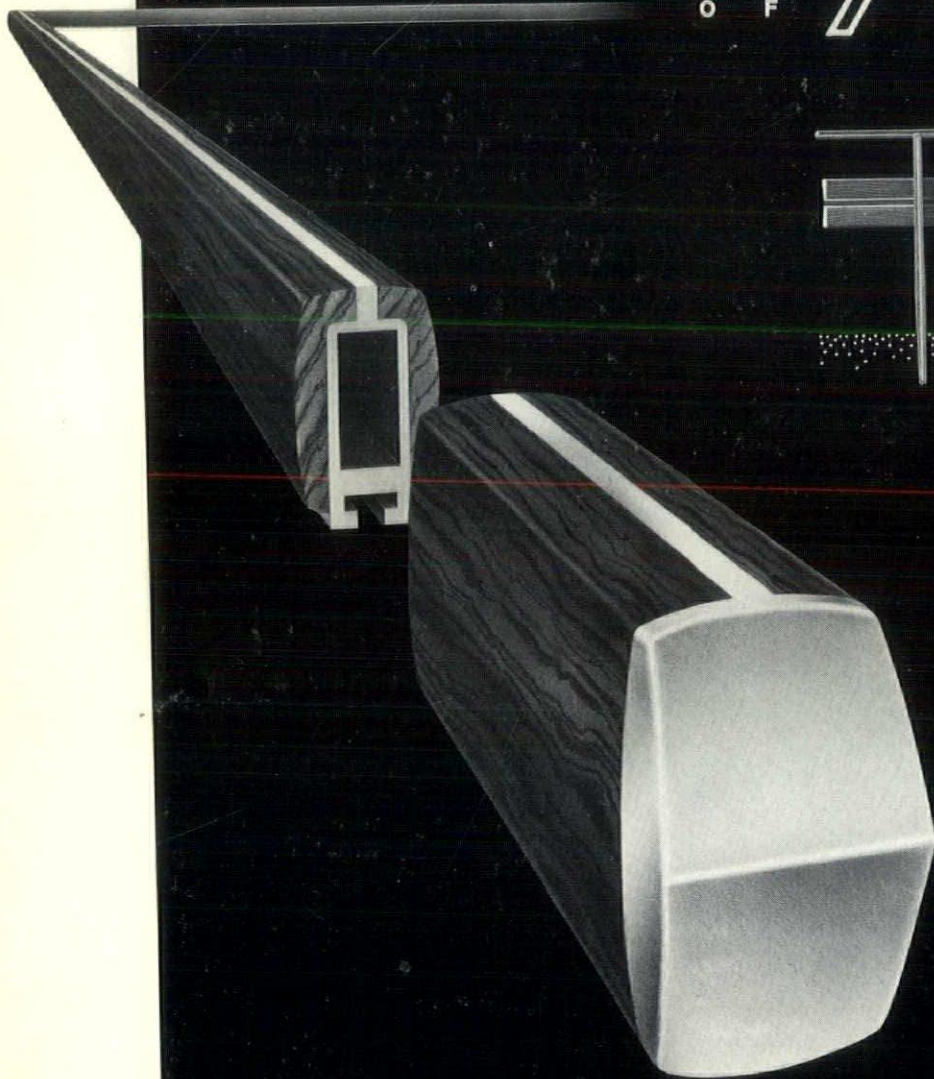
Because they are flameless, industrial electrical heating units and equipment can be readily installed in the most logical, most efficient locations, even right on the production line. If you have an industrial heating problem of any kind, just call WO 2-2100, Ext. 2861. Outside the metropolitan Detroit area, call the nearest Edison office.

DETROIT EDISON



Blumcraft

O F P I T T S B U R G H



NEW WOOD HANDRAILS with an aluminum core substructure are furnished as a complete unit by Blumcraft. The solid walnut wood, with a natural hand-rubbed oil finish, is bonded to the aluminum at Blumcraft's factory. This new railing concept combining wood and metal is trademarked **RAILWOOD***

Complete 1964 catalogue available from Blumcraft of Pittsburgh, 460 Melwood St., Pittsburgh 13, Pa.

*Trademark

© 1964 Blumcraft of Pittsburgh

2013