

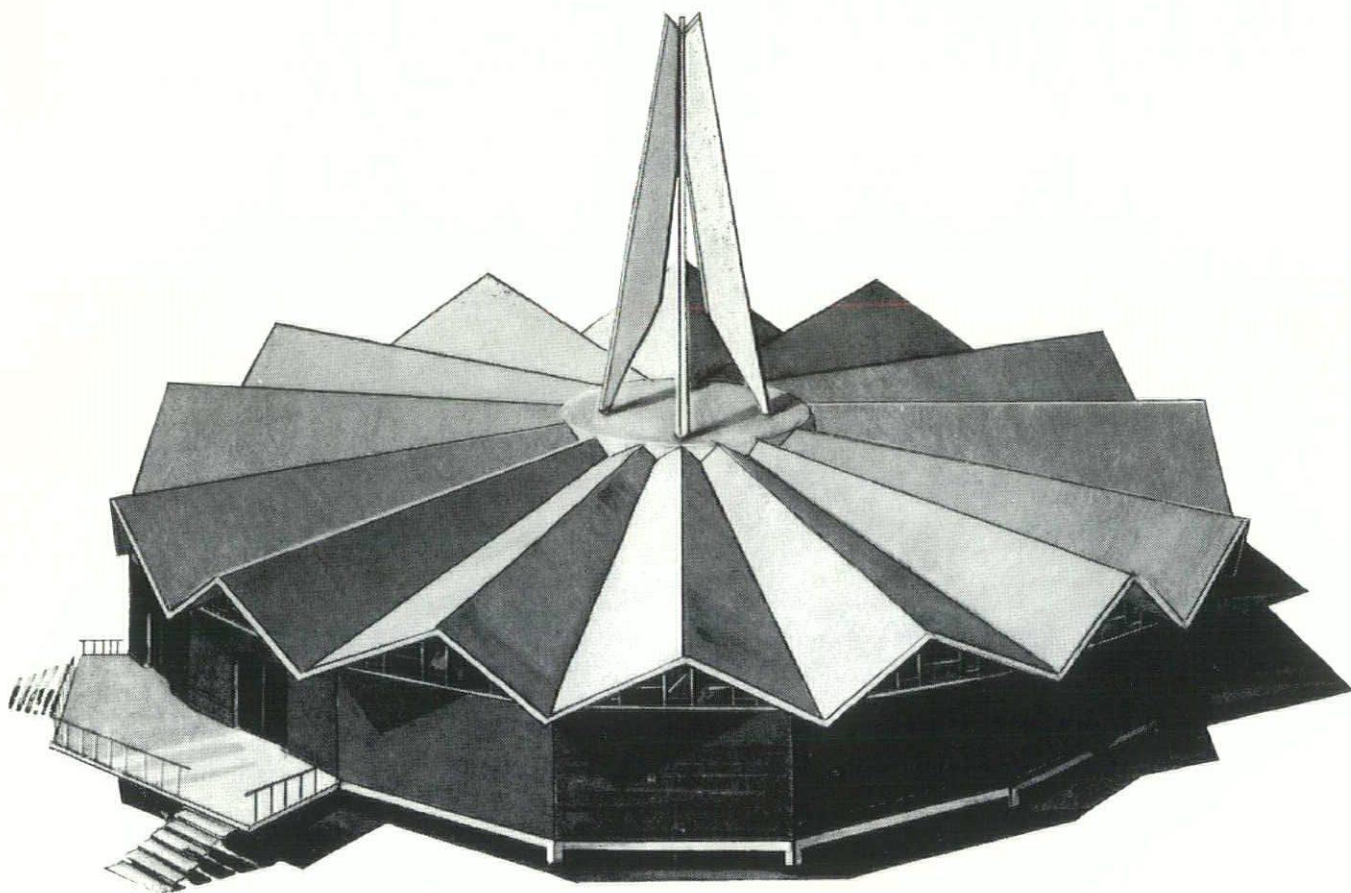


LIBRARY
MAY 1 1964

michigan society of architects *march 1964* 50¢


BULLETIN

*shell
structures
in
light
gage
steel*



Fenestra cellular steel Folded Plate introduced a new era of shell structures in steel. The light weight long clear spans offer unlimited design possibilities for truly distinctive structures while retaining the economy associated with light gage steel panel construction. For the latest developments in this new trend, call your Fenestra Representative or write Fenestra Incorporated, 220 Delaware Avenue, Buffalo, New York 14202.

 **FENESTRA**

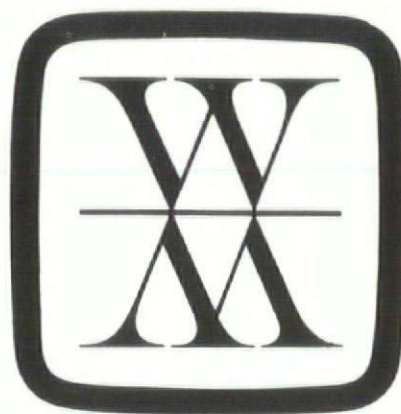


*architectural
clarity
continued
inside*

*I-frame desk
and seating
group,
smoker and
desk
accessories by*

HUGH ACTON CO.
Birmingham, Mich.

MAY WE SEND YOU A CATALOG?



WM. MOORS, INC.

are you
thinking
BIG by using DoxPlank for long span strength?

Over twenty five years of use has conclusively demonstrated the structural and esthetical qualities of the Doxplank floor and roof framing system. This unique system of pre-cast segmental construction makes possible long span design carrying maximum floor or roof loads. Spans in excess of thirty feet are economically obtained by means of this superior system which combines unusually high load carrying capacity with a minimum of its own dead weight. The weight reducing hollow core becomes a raceway for plumbing, heating, air-conditioning and electrical systems, eliminating the need for expensive conduit and duct work.

Because of its exclusive segmented construction, Doxplank alone provides the manufacturing control that assures uniform product quality in addition to attractive appearance.

On your next project THINK BIG by using Doxplank as the most economical and attractive long span framing system available.

 **DoxPlank** F L O O R A N D R O O F S Y S T E M

31457 utica road fraser, michigan phone 293-2600

BULLETIN

monthly

michigan society of architects march 1964

THE MONTHLY BULLETIN IS PUBLISHED FOR THE MICHIGAN SOCIETY OF ARCHITECTS TO ADVANCE THE PROFESSION OF ARCHITECTURE IN THE STATE OF MICHIGAN.

EDITOR—
James B. Hughes, AIA
ASSISTANT EDITOR—
Ann Stacy

ART DIRECTOR—
Edward Hutcheson
GRAPHIC ARTS
CONSULTANT—

Gary R. Grout
Ann Arbor Press

ADVERTISING
DIRECTOR—

Charles O. Irvine
CHAPTER ASSOCIATE
EDITORS

Detroit . . .

Wallace Cleland, AIA
Flint Area . . .

Dale A. Suomela, AIA
Grand Valley . . .

Jay H. Volkers, AIA
Huron Valley . . .

Henry S. Kowalewski, AIA
Mid-Michigan . . .

Alvin L. Farnsworth, AIA
Northern Michigan . . .

Richard H. Greenless, AIA
Saginaw Valley . . .

William Stenglein, AIA
Western Michigan . . .

Donald W. Stearns, AIA
MSA BOARD LIAISON . . .

George W. Sprau, AIA
EDITORIAL

CONSULTANT . . .

Nancy M. Houston

Monthly Bulletin, Michigan Society of Architects, the official publication of the Society; all Michigan Chapters of the American Institute of Architects; Women's Architectural League of Detroit (WALD); Producers Council, Inc., Michigan Chapter; Builders & Traders Exchanges of Detroit, Grand Rapids and Lansing is published monthly by the Michigan Architectural Foundation; Editorial and Advertising Offices—28 West Adams, Detroit 26, Michigan, Phone: 965-4100.

Volume 39—No. 3

7 Flint Area Chapter Honor Awards

11 Gus—the man who pushed for new capitol buildings

12 Addenda—1964 M.S.A. Roster

15 Anniversary Waltz II

19 M.S.A. Convention Program

26 Producers' Council

27 Convention Advance Registration Form

28 News

39 Obituaries

42 Calendar

Classified Advertising

Advertisers' Index

Cover: The Theme Motif for M.S.A.'s Golden Anniversary Convention—taken from an original Louis Sullivan design.

CENTURY BRICK CO.
PC CORNING GLASS BLOCK
GLASS BLOCK SALES, INC.

Congratulations To

MSA

on it's

50th

ANNUAL CONVENTION

JOHN E. GREEN CO.
INCORPORATED

MECHANICAL
CONTRACTORS

Our 55th Year

Detroit: TOWnsend 8-2400

Saginaw: 753-1446

CALL SPITZLEY FIRST



for
Plumbing
Heating
Industrial Piping
Power Piping
Pipe Fabricating
Ventilating
and
Air Conditioning

•
INDUSTRIAL AND
COMMERCIAL SYSTEMS
INSTALLED — REPAIRED
REMODELED



SPITZLEY CORPORATION



1200 W. Fort St., Detroit, Mich. 48226 • 313 961-0840
P.O. Box 1206, Lansing, Mich. 48904 • 517 677-3171

PLUMBING • HEATING • INDUSTRIAL PIPING • PIPE FABRICATING • VENTILATING • AIR CONDITIONING



Mackinac Straits Bridge

Michigan's highway-on-the-water

It's no happenstance that the world's longest* suspension bridge is in Michigan.

Michigan is Transportation . . . by roadway, by railway, by airway, by Seaway.

Michigan offers industry the nation's finest network of toll-free expressways . . . overnight access to nearly 80 million customers of mid-America.

Michigan is also Skilled Labor. Michigan is Power. Michigan is Water. Michigan is Research.

And Michigan is Natural Gas unlimited, tapping the nation's largest supplies of the fuel that's fast, economical, and needs no hauling or stockpiling.

Michigan is Opportunity, in a State on the move for industry on the move. Get the real story of Michigan in "The Michigan Story," color film available for private showing. Write our Industry Development Division, Detroit.

*from anchorage to anchorage

MICHIGAN CONSOLIDATED GAS COMPANY



Congratulations To The Winners!

MSA...SMCAD Industry Fund DRAFTSMENS' COMPETITION

\$1,000 CASH • Includes 8 Awards and Grand Prize •

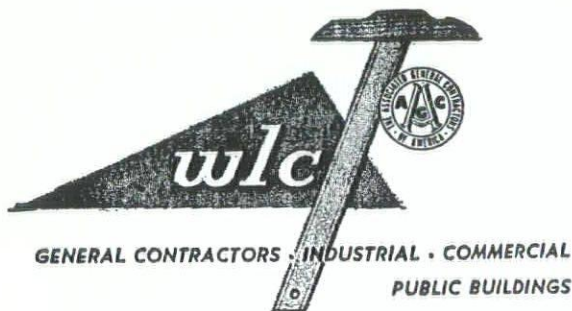
Sponsored by ...



ANTHONY ASHER
Executive Secretary

15139 W. EIGHT MILE RD. • DETROIT 35, MICH. • 864-6833

WALTER L. COUSE & CO.



SKILL
INTEGRITY
RESPONSIBILITY

BRoadway 3-2500

12740 LYNDON AVENUE
DETROIT 27, MICHIGAN

E. J. Anderson Co.

Representing

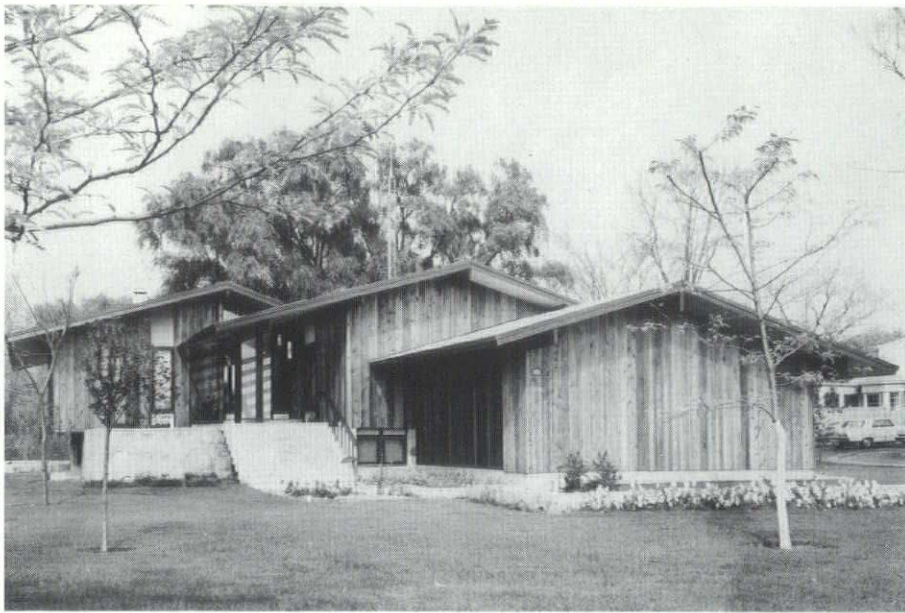
SLOAN VALVES
Flush Valves
and
Shower Heads

CHICAGO PUMP
Centrifugal Pumps
and
Sewage Pumps

THELEN BRONZE CO., INC.
Aluminum Gratings

W. D. ALLEN MFG. CO.
Fire Protection
Equipment

14 Smith Street, Detroit 2, Michigan
TRinity 2-7085
TRinity 5-4899



First Honor Award
Agree Residence
Gibbs, Tomblinson &
Harburn, Architects

Flint Area Chapter Announces Honor Awards

by Dale A. Suomela, AIA

The Flint Area Chapter's Honor Awards Program—1964 was climaxed with a most enjoyable Dinner Dance at the Flint Golf Club on the evening of January 10, 1964.

The cocktail hour, during which members and their wives met the honored guests, was followed by a buffet dinner, the awards presentation program and dancing.

Honored guests were the jurors Bruno Leon, Chairman, Department of Architecture, University of Detroit; Bruce Smith, AIA, Smith & Smith Associates, Architects, Royal Oak, Michigan; and Robert Wold, AIA, Wold & Bowers, Architects, Inc., Grand Rapids, Michigan; Mrs. Leon, Mrs. Wold, Dr. Lawrence Jarvie, Superintendent, Flint Community Schools, Mrs. Jarvie and Willis Anderson, freshman architecture student at the College of Architecture & Design, The University of Michigan, who is the present recipient of the Flint Area Chapter Scholarship.

The Scholarship recipient is provided with tuition fees for ten semesters, i.e. five years. The Scholarship fund is financed by the Honor Awards Program and Chapter group projects. Mr. Anderson spoke to the gathering and presented an interesting portrayal of life as an architectural student.

The Honor Awards Program jury assembled at mid-

morning at the Flint Institute of Arts. They then reviewed submissions, which included projects in eight categories, for the remainder of the morning. As a result of the morning review a number of projects were selected for further consideration and were observed during an afternoon tour of these buildings.

Bruce Smith acted as chairman of the jury and announced the following awards:

First Honor Award—Project: Agree Residence; Owner: Mr. and Mrs. Phil Agree; Architect: Gibbs, Tomblinson & Harburn, Architects.

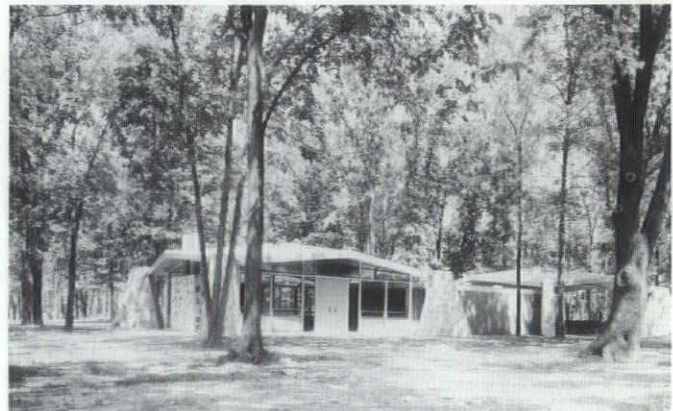
Merit Award: Educational Buildings; Project: Addition to Longfellow-Community Junior High School; Owner: Flint Board of Education; Architect: J. Luran Kretchmar, Architect.

Merit Award: Residential Buildings; Project: Agree Residence; Owner: Mr. and Mrs. Phil Agree; Architect: Gibbs, Tomblinson & Harburn, Architects.

Honorable Mention: Recreation Buildings; Project: Forest Park Recreation Center; Owner: Flint Department of Parks and Recreation; Architect: Gibbs, Tomblinson & Harburn, Architects.



Merit Award—Educational Buildings Addition—Longfellow Community J.H.S.—J. Luran Kretchmar, Architect.



Honorable Mention—Recreation Buildings—Forest Park Recreation Center—Gibbs, Tomblinson & Harburn, Architects.

Turner Engineering Company

**DEPENDABLE
ELECTRICAL
CONSTRUCTION
FOR 46 YEARS**

464 Brainard Street
DETROIT 1, MICHIGAN
TEmpLe 1-0470

offering . . .

a wide range of products and services to architects who demand quality, service and dependability.

- Supersines
- Bronze and Aluminum Tablets
- Cast and Fabricated Letters
- Custom Designed Signs and Symbols
- Traffic Control and Street Signs



Manufacturers . . . Distributors

**THE
SUPERSINE
COMPANY**

17131 Van Dyke Ave., Detroit 34, Michigan

Associated with Brown and Raisch Co.

TWInbrook 2-6200

PIONEER • DETROIT, INC.

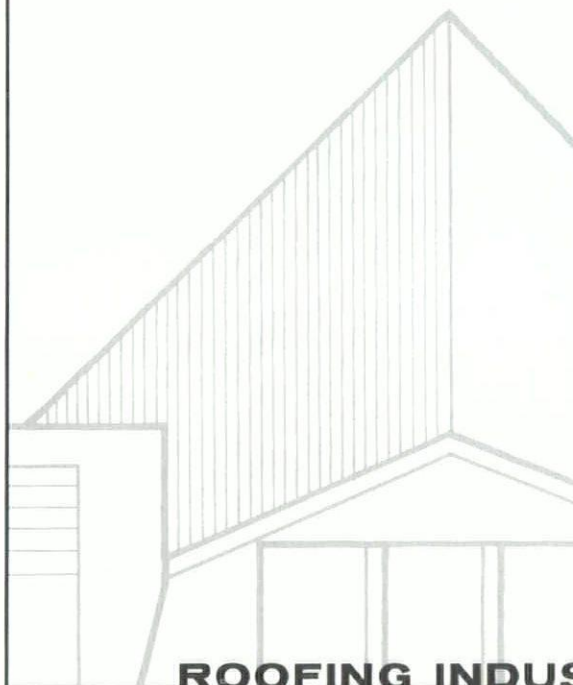
(DIVISION OF PIONEER
FIREPROOF DOOR COMPANY)

**Manufacturers of
HOLLOW METAL DOORS
AND FRAMES**

**For
BEAUMONT HOSPITAL
ADDITION**

2728 JOHN DALY RD.
CR 8-5200 INKSTER, MICH

“ROOFING IS AN ART”



BUILT-UP ROOFING today is a highly skilled, technical trade. It is no longer possible to stay in the roofing business by using unskilled help, a mop and a bucket of tar to do a roofing job.

With today's new designs, materials and application techniques, competition demands that all men of all trades **KNOW** their business.

ALL members of the Southeastern Michigan Roofing Contractors Assoc. and the R.I.P.F. use QUALIFIED, PROFESSIONAL tradesmen who DO know their business.

To **KNOW** the man and the company he represents is your guarantee that a **QUALITY** job will be done. Put your trust in a **QUALIFIED** Roofing Contractor. A listing is available on request.

As an additional service to the architectural profession we will be pleased if you consult with our Roofing Advisory Committee on any problems you have pertinent to roofing.

ROOFING INDUSTRY PROMOTION FUND

Geo. F. Styer, Jr.
Chrmn. Brd of Trustees

8469 E. Jefferson Ave.
Detroit 14

E. B. Grime
Exec. Sect.

why do creative architects call on Belden Brick?



***because Belden Brick provides
over 200 imaginative variations
in color, texture and size!***

Architectural creativity is most effectively interpreted when distinctive colors, textures and sizes are available. And that's why creative architects call on BELDEN. Because BELDEN provides over 200 imaginative variations of brick, perfectly adaptable to offices, churches, schools, factories and homes. Your nearest BELDEN Dealer will gladly provide samples and new color brochure.

**EIGHT MODERN FACTORIES LOCATED AT CANTON, SOMERSET,
PORT WASHINGTON, SUGARCREEK, AND UHRICHVILLE, OHIO**



Serving the Construction Industry in Michigan

*Keeping pace with the
demands of a growing industry,
F. W. Dodge Company has
continued to provide an
efficient and valuable
communications link in Michigan
between the architect and those
who serve him in performing
and supplying construction.*



F. W. DODGE COMPANY

Offices and Plan Rooms in

DETROIT 1415 Trumbull Avenue
FLINT 613 West Court Street
GRAND RAPIDS 640 Eastern Avenue, S.E.
LANSING 200 Mill Street
KALAMAZOO 210 East Vine Street

ARCHITECTS throughout Michigan have long enjoyed the benefits of rapid and efficient communications with those who perform construction and supply the materials for it. By providing information on their projects to Dodge Reports, and filing their plans and specifications in Dodge Plan Rooms, architects are assured of best chances for earlier completion dates and lower final costs.

FIVE DODGE PLAN ROOMS IN MICHIGAN are at the disposal of architects. Your plans and specs in these Dodge Plan Rooms help you get better prices from more suppliers, quotations more often from better suppliers. Your contractors get quotations faster from material and equipment firms who are able to see your plans sooner in the Dodge Plan Rooms.

BY PLACING YOUR PLANS AND SPECS IN THE DODGE PLAN ROOMS, you reduce the otherwise unavoidable volume of inquiries, correspondence, calls and office traffic—simply by referring interested Dodge subscribers to the Dodge Plan Room.

ABSOLUTELY NO CHARGES OR MEMBERSHIP DUES are required of Dodge Plan Room users. Any material firm, manufacturer or subcontractor who subscribes to Dodge services is welcome at any time.

NEWS OF YOUR PROJECTS is seen in Dodge Reports by suppliers and contractors who wish to compete in furnishing their services, materials, products or equipment. Their desire is to give you the best they have to offer at the best possible price to you.

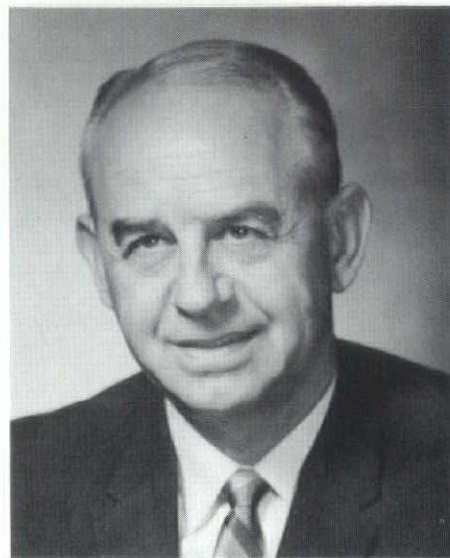
MATERIAL AND EQUIPMENT FIRMS who use Dodge Reports are better able to serve the architect because they know his needs, based on the information they receive in Dodge Reports. And they are less likely to take the architect's time with ill-timed sales calls when he is not currently involved in a project which calls for what they have to offer.

CONTRACTORS, both generals and subs also can time their activities to the actual needs of the architect. Because they are naturally interested in the kind of jobs they can do best—those best suited to their crews and equipment—the architect benefits from considering a wider range of bids than would otherwise be possible, resulting in excellent work at a favorable price.

IN ALL THESE WAYS, and more, F. W. Dodge Company helps people do business better and more efficiently in construction.

Gus — the man who pushed for new capitol buildings

By MARTHA MONGEAU
(Towne Courier Staff Writer)



*A. N. (Gus) Langius, FAIA
Director, Michigan Region, A.I.A.*

The tall, slim figure of Adrian Nelson (Gus) Langius will be prominent at the ground breaking ceremonies for the Capitol Development Program in May.

In his 34 years with the building division of the Department of Administration (25 years as director) he has been a key figure in making a dream a reality.

"We have been working on this as early as 1937," said Langius, in discussing the soon-to-be-built state buildings.

"The first real push came during Gov. Kelly's administration," he continued. "It must be implemented now because of the new construction, which will reduce the some 120 state agencies to around 20."

He explained that the big 10-block development will be one big unified development raised slightly higher than street level with parking facilities underneath for some 4,000 cars.

"Even though we start the Highway Building and Secretary of State buildings in May, it will be 1970 and beyond before the development is finished, with an appropriation every year," Langius said.

He explained that his work is divided into two phases: pre-appropriation and post-appropriation.

"We must first prepare the concept and information to present to the legislature for appropriation. Then we proceed with specifications and letting of contracts."

Langius commented that architecture is the "knowsiest" profession.

He quoted Frank Lloyd Wright's belief that it is necessary to live with a family to learn their needs and habits before building a house for them.

Langius has done just that in his service in State government.

"I have been part of the expenditure of half a billion dollars," he said.

Few other men in state service could come anywhere near

this figure.

Langius takes personal pride in the state's education, hospital and penal facilities. He thinks they are the finest in the country.

Langius rates high in his profession.

He is a fellow of the American Institute of Architects. He was given the gold medal of the Michigan Architects Society. He has been listed in "Who's Who" for many years, and has been active in innumerable professional societies.

He is presently director for the American Institute of Architects. He is both a registered architect and registered engineer.

Gus Langius was born in Zeeland, Mich. He received his degree from the University of Michigan in 1928 and married Dorothy Hewitt in 1929.

They have a son and daughter and two grandsons. They live in the contemporary home at 932 Westlawn which Gus designed.

The role that Gus Langius has played in drafting the master plan for the expansion of state office facilities can best be explained by a man who worked closely with him on the State Capitol Development Committee.

Howard J. Stoddard, a commission member, wrote the following comments to Gus in regard to the action of the state legislature in approving the proposed Capitol Development Program in December:

"It may well be that other individuals feel that they have made a substantial contribution to this achievement, but many of us realize that you alone are primarily responsible for the final result.

"It is one of the finest things that has happened in Michigan for many, many years and you are indeed entitled to complete recognition for the part you have played."

The above article is reprinted from a recent issue of the Lansing Towne Courier.

ADDENDA — 1964 M. S. A. ROSTER

Detroit Chapter

CORPORATE MEMBERS

Annala, Aaro J.6011 Minock, Detroit 20
Bagley, Alfred J.116 Tennyson, Highland Park 3
Becker, Byron H.1455 Penniman Ave., Plymouth
Dole, Walter M.1676 Saratoga, Ferndale 20
Fisher, Harold H.18550 E. Warren, Detroit
Gardner, William H.54 Ridge Rd., Pleasant Ridge
Lamb, Jack I.615 Community Nat'l. Bk., Pontiac
Lawrence, Donald M.13557 Greenview, Detroit 23
Leech, Donald M.4425 Buchanan Dr., Warren
Lee, Russel H.14088 Northlawn, Detroit 38
Pullar, Robert A.17649 Shagbark Dr., Southfield
Savage, Gilbert W.27250 Shagbark Dr., Southfield
Savage, Logan G.3677 McKnight Road,
White Bear Lake, Minnesota
Swarts, Ward G.John Greenhow House
Williamsburg, Virginia
Tobocman, Irving20105 W. 8 Mile Rd., Det. 19
Zigmanth, Harold J.7361 Plainfield, Dearborn

PROFESSIONAL ASSOCIATES

Bruce, David O.4684 Courville, Detroit 24
Gerganoff, Steve T.1215 Aline Drive, Grosse Pointe Woods 36
Nobili, Marco17140 East Jefferson, Grosse Pointe 30

ASSOCIATE

Roney, Robert F.840 Lake Shore Road, Grosse Pointe 36

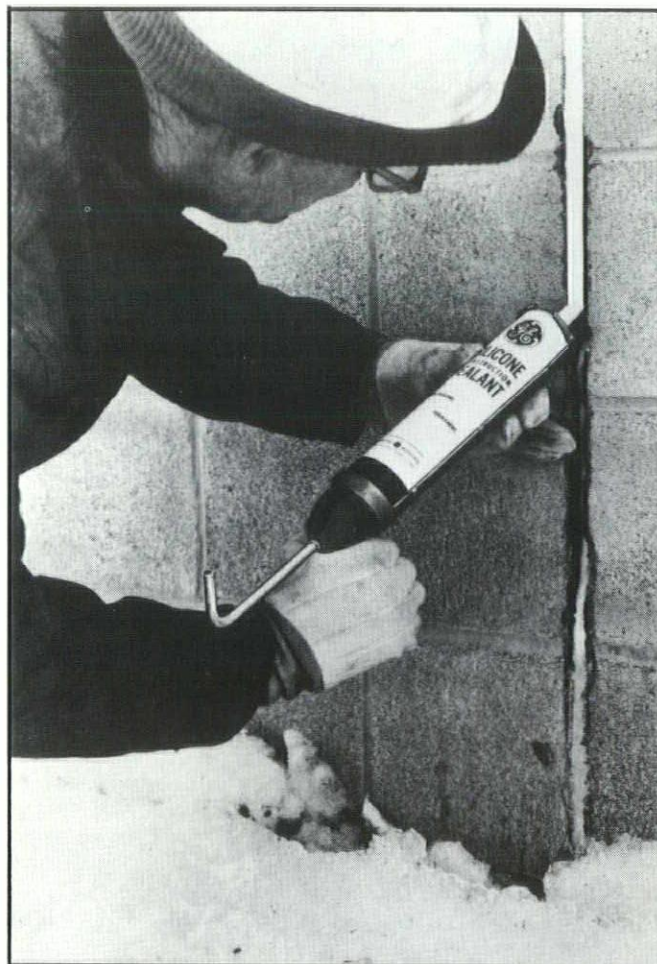
Huron Valley Chapter

CORPORATE MEMBERS

Dunbar, Donald H.752 South Monroe St., Monroe
Geisler, Charles Frederick433 Hilldale Dr., Ann Arbor
Gustafson, Robert G.15½ E. Front St., Monroe
Johe, Herbert W.440 Barton North Dr., Ann Arbor
Lee, Joseph T. A.390 Sumac Lane, Ann Arbor
Muschenheim, William1251 Heatherway, Ann Arbor
Oberdick, Willard A.1503 Ottawa, Ann Arbor

ASSOCIATE

Goucher, Edwin L.321 South Main Street, Ann Arbor



NEW G-E Silicone Sealant lasts twice as long!

General Electric Silicone Construction Sealant is virtually immune to attack by ozone, weather, temperature, oxidation and ultra-violet. Twenty years of silicone rubber service in military and aircraft uses have proved it.

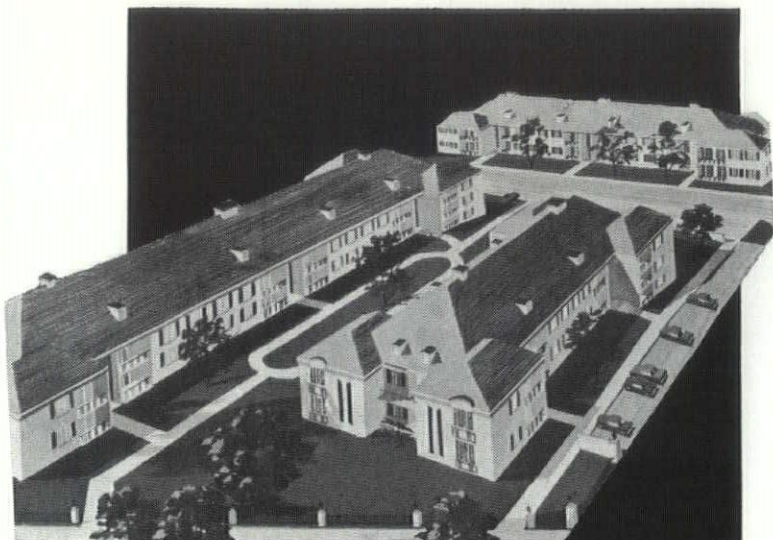
Accelerated aging tests demonstrate that G-E Silicone Construction Sealants will outlast all other types of elastomeric sealants by as much as 2 to 1.

General Electric Silicone Construction Sealant comes ready to use. No mixing or accelerators. It flows the same easy way at sub-zero temperatures or 120°F. It is permanently elastic, will expand or compress easily, and bonds to all building materials. And it's available in a variety of non-fading colors (white, aluminum, translucent, neutral and black are in stock) that will never run or stain building materials.

Let us demonstrate why G-E Silicone Construction Sealant will probably last as long as your building itself.

GENERAL  ELECTRIC
DISTRIBUTED BY

HOLMES ASSOCIATES INC.
1221 EAST NINE MILE ROAD
FERNDAL 20, MICHIGAN
547-8811 566-2326



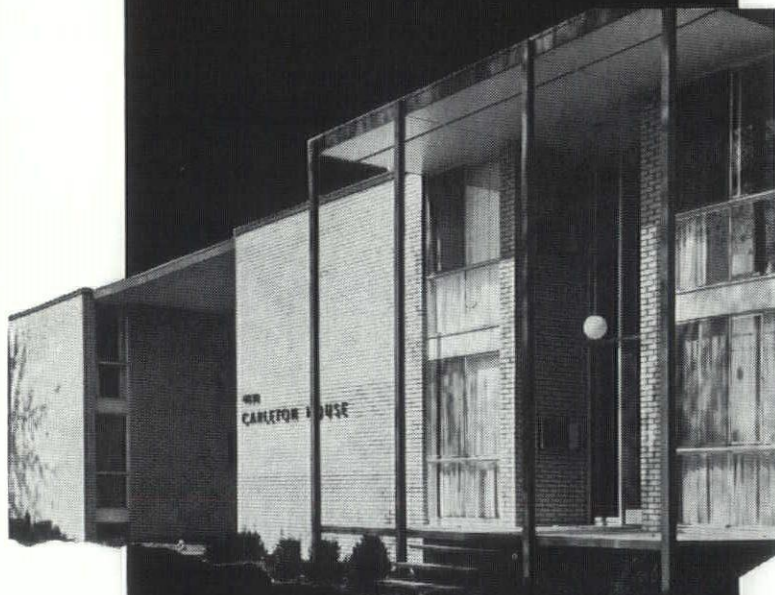
"JEFCO" NORMAN WHITE ROCKFACED BRICK, SILICONED, was selected by the PAUL H. JOHNSON Company, to be used on all exteriors of their gracious BURLINGTON ARMS Apartments, located at 1111 North Woodward Avenue, BIRMINGHAM, MICHIGAN.

Step Up To



JEFCO

QUALITY



"JEFCO" Standard GREY VENEER BRICK was used on the MODERN CARLTON HOUSE, located at 4030 WEST THIRTEEN MILE ROAD, Royal Oak, MICHIGAN.

Architects and Builders who demand QUALITY . . . quality they know . . . quality they trust always turn to "JEFCO".

"JEFCO ROCKFACE" SILICONED brick is available in FIVE (5) dimensional sizes including NORMAN and ROMAN and NINE (9) distinctive COLORFAST COLORS . . .

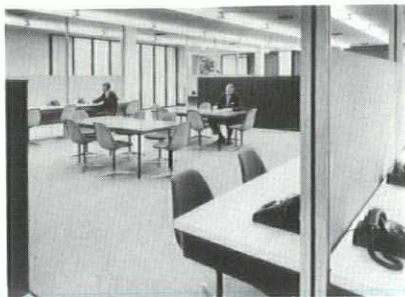


EFCO BRICK

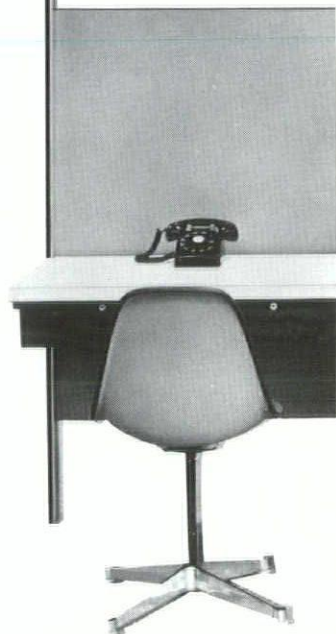
a quality product of

DETROIT BRICK AND BLOCK COMPANY

95 South St. Jean • Detroit 14 • VALLEY 2-5970



DUO-DESK
a combination pole,
movable partition and
desk unit developed by
DETROIT PARTITION
COMPANY, solves
several major problems . . .
conservation of space and money.
With DUO-DESK you can
realize over a 50% increase
in floor space as compared
with conventional desks and
partitioning . . . and
a decrease
in cost of housing
additional personnel. At \$5.00
a square foot space cost,
DUO-DESKS seat personnel
as low as \$75.00 per
person compared with
\$175.00 to \$200.00
for standard
desks with no partitioning.



DETROIT PARTITION COMPANY

15850 WYOMING • DETROIT 38, MICHIGAN
UNiversity 4-2800



DESIGN • ENGINEERING • FABRICATION • INSTALLATION

Optional: Shelving, drafting tops and conference tables available

Congratulations

MSA

50TH ANNUAL
CONVENTION

JOE PANELLA
DOW CHEMICAL COMPANY
600 Northland Towers
Northland Drive
Detroit 35, Mich.
444-1000

FREEMAN — DARLING, INC.



GENERAL BUILDERS

8120 W. McNichols Road
Detroit 21, Michigan
UNiversity 4-4788

HEINEMANN-LOVETT CO., INC.

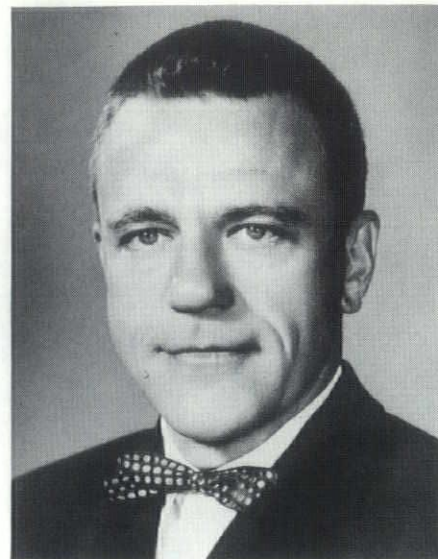
WATERPROOFING CONTRACTORS

Sand Blasting
Tuck Pointing
Concrete Restoration
and
All Types of
Coatings

8700 Tireman Ave.
Detroit 4, Michigan WE. 3-7161

ANNIVERSARY WALTZ II

by James B. Hughes



One year ago, I reviewed the events of my first year as Executive Director of the Michigan Society of Architects, the Michigan Architectural Foundation, the Detroit Chapter, A.I.A. and as Editor of Monthly Bulletin, MSA. I stated in my opening paragraph that I was "an employee of the architectural profession in Michigan . . . of all architects—and indirectly, of all their employees."

Now that I have added another year to the first in this position—I can reiterate my statement of a year ago. I am truly and happily an employee of the architectural profession in Michigan.

Having completed my second year in office, I have doubled my experience in my job—a simple assumption based on the element of time, only—more realistically—and based on fact—I feel that I have more than quadrupled my experience in this past year.

A year ago, I said, "Increasing activity in my office indicates an awareness that this office exists to serve the architects of Michigan. I hope that this awareness will continue to grow." This past year is eloquent testimony to the growth of that awareness.

All facets of our operation have expanded. During the past year, we found it necessary to move into larger quarters in the same building in order to have adequate space—not only for working, but also to store the voluminous records which have accumulated over the years. In the spring of 1963, we acquired from the previous Society office, numerous cartons containing membership files, treasurer's accounts, committee reports, etc. dating back to the founding of the Society. We are still in the process of sorting and evaluating all this material—a slow process, indeed, when coupled with the immediacy of day-to-day developments. Responsibility for the conduct of many more of the affairs of the Society and the Detroit Chapter has been transferred

to my office during this past year. In order to ease the burden previously placed on the officers, directors and committees of the various organizations concerned, we are undertaking more and more of the detail work of the Society and the Detroit Chapter. An example is the maintaining of all financial records—the receipt and deposit of dues and income from other sources, and the receipt of bills and preparation for signature of checks for payment.

The foundation has been relatively inactive except as the publisher of the Monthly Bulletin. In this function, we have a never-ending area of activity. Several issues may be in various stages of development at a given moment so that the only clearly defined break point comes when a particular issue goes on the press. This allows a few moments of free breathing before plunging back into working on the magazine for forthcoming months.

This year, we have served as the clearinghouse for the Annual M.S.A. Convention. Much of the incoming and outgoing correspondence pertaining to the convention has been funneled through our office.

The rental of exhibit space has been coordinated in our office. We have participated in the layout of the convention area and worked with the Design Chairman in the development of the cover of this issue, the program, etc.

We receive many calls from the public requesting information about architects and architecture. On one occasion, we were asked to serve as an expert witness in a case in which architectural services were involved.

It was my hope that this page might be devoted to a capsule history of the Michigan Society of Architects' first fifty years. I regret that the lack of time and the inaccessibility of information did not permit the writing of a salute to M.S.A.'s fiftieth, were I capable of such an undertaking. Instead, I have looked back at two years—not fifty. Now, we shall look ahead.

CONGRATULATIONS — M. S. A. ON YOUR GOLDEN ANNIVERSARY

Producers' Council is proud to have been associated with your group since 1921, and we know that our relations in the future will be as cordial as they have been in the past. On these pages are listed the members of our Michigan Chapter. These companies are all manufacturers of quality building products produced for use in the buildings you design.

We appreciate your patronage and are constantly striving to improve our products and systems so that you will be able to create ever better structures.

You are cordially invited to visit our booth and the booths of our members during your Convention. We welcome any comments you may make which will aid us in doing a better job.

J. J. Panella
President

Producer's Council, Inc. Michigan Chapter



Roster • 1964

ALUMINUM COMPANY OF AMERICA
Henry Hall

AMERICAN-SAINT GOBAIN CORP.
W. L. Kimball
T. R. Stenson
Arthur M. Acker

AMERICAN AIR FILTER CO., INC.
James Munson
Fred Miller
Jack Drennan

ARMSTRONG CORK COMPANY
Galen D. Robbins
Larry Kisor
James L. Doyle

AZROCK FLOOR PRODUCTS DIVISION
UVALDE ROCK ASPHALT COMPANY
Philip Hooper

BARBER-COLMAN COMPANY
R. L. DEPPMANN COMPANY
Laurence A. Burch
John B. Heaton

**BARRETT DIVISION OF ALLIED
CHEMICAL CORP.**
M. S. Miner

CORNING GLASS WORKS
Lowell Anderson
R. B. Martin

DOW CHEMICAL COMPANY
Joe Panella
Dick Lane
C. W. Cairns

DOW CORNING CORP.
CHEMICAL PRODUCTS DIV.
Lyle J. Schroeder

E. I. DUPONT CO.
ELASTOMERS DIV.
Samuel D. McCready

EXECUTONE, INC.
EXECUTONE - DETROIT, INC.
Harold J. Boudreau
Robert S. Jackman

FLINTKOTE CO., INC.
C. D. Bettler
J. M. Halik

FORMICA CORPORATION

Tony Strange
Ted Diehm

B. F. GOODRICH CO.

James I. Patterson

E. F. HAUSERMAN COMPANY

Fred Wehle, Jr.
Don Johnson

HILLYARD CHEMICAL FLOOR TREATMENTS

Al Hann

INLAND STEEL PRODUCTS COMPANY

R. A. Shooltz
F. E. Criqui
James Shoup

JOHNS - MANVILLE SALES CORP.

Malcolm Spencer
Ed McNeeley

KAWNEER COMPANY

W. A. Cunningham

KENTILE, INC.

John Gabel
Pete Hambleton

KOPPERS COMPANY, INC.

Walter Anderson

L. C. N. CLOSURES, INC.

Robert A. Eisen

LIBBEY - OWENS - FORD GLASS CO.

Charles W. Burrows
Jos. F. Busse
David L. Wenzler

MINNEAPOLIS - HONEYWELL REGULATOR CO.

R. L. Jameson
N. S. Miller

MOSAIC TILE COMPANY

Chas. P. Garascia
George E. Hamilton

NATCO CORPORATION

Don Henkel
J. R. Bradtke

NATCO DISTRIBUTOR**CENTURY BRICK COMPANY**

Sam Burtman

OTIS ELEVATOR COMPANY

J. N. Ockun

OWENS - CORNING FIBERGLAS CORP.

Donald M. Howell, Jr.
James A. MacLean
Joseph T. Trapp

PITTSBURGH PLATE GLASS COMPANY

Gordon S. MacDonald

H. H. ROBERTSON COMPANY

David Clymer
Wm. B. Commons
J. H. Stephen

ROHM & HAAS COMPANY

R. E. Powell
A. M. Caesar

THE RUBEROID CO.

Don Glover

SHERWIN - WILLIAMS CO.

J. P. Patterson

STYLON CERAMIC TILE

Don Blake
Frank Piersante

SYLVANIA ELECTRIC PRODUCTS, INC.

Don Ross
Bob Kuschwa
Roy Laskowski

THOMAS INDUSTRIES, INC.**BENJAMIN DIV.**

W. G. Upliger

UNISTRUT PRODUCTS COMPANY**UNISTRUT DETROIT SERVICE COMPANY**

W. A. Snure
Donald Wisman

U. S. CERAMIC TILE COMPANY

Fred Blackwood
D. W. Thomas

UNITED STATES PLYWOOD CORPORATION

R. G. Grinnell

U. S. STEEL CORP.

Ralph Hickey

VERMONT MARBLE COMPANY**DETROIT MARBLE COMPANY**

D. L. Granger

WESTINGHOUSE ELECTRIC CORPORATION

Orlyn C. Lewis
L. R. Koceski

ZONOLITE DIV. W. R. GRACE & CO.

E. D. Kerr

ASSOCIATE MEMBERS**AMERICAN GAS ASSOCIATION****MICHIGAN CONSOLIDATED GAS COMPANY**

Adam DeMartino

DETROIT EDISON COMPANY

Frank North

HONORARY MEMBERS**PAUL MARSHALL****C. F. MULLER****D. L. PROUTY****C. W. TRAMBAUER**

Producers' Council, Inc.

610 New Center Building

Michigan Chapter

Detroit, Michigan 48202

TR 1-8100

March, 1964 | 17



When you see a Continental, take a second look.

Notice the kind of person who enjoys it.

Then experience the Continental yourself—
the sedan you see here or the unique four-door convertible.
Discover its increased spaciousness, its ride, its luxury, its comfort.

You will know what makes the Continental
America's most distinguished motorcar.

— Lincoln Continental.

THIS magnificent Lincoln Continental can be yours to drive for one week if you are one of the fortunate winners at the Fiftieth Annual M.S.A. Convention. Don't miss the opportunity to drive America's most distinguished motor car. Plan today to attend M.S.A.'s Fiftieth Convention—March 18, 19, 20.



50th Annual – Golden Jubilee – Convention

Michigan Society of Architects

March 18-19-20, 1964 Sheraton-Cadillac, Detroit

WEDNESDAY MARCH 18

12 noon

Sheraton Room—MSA Board Meeting

4 pm

Registration Desk and Exhibits Open

8:30 pm

Grand Ballroom—MSA Carnival
Complimentary refreshments and
entertainment. Jack Qualey's
Orchestra and show with Nada Olgren and
Monnie Aquino; Max Cooper, comedian and
impressionist and the Schoettley-Dellar Troupe

THURSDAY MARCH 19

9 am

Registration and Exhibits Open

10 am

Reception Room—Annual Business Meeting
MSA President Bruce H. Smith, presiding

12 noon

Exhibit Area—Drawing for Prizes

12:30 pm

Grand Ballroom—Luncheon

Adrian N. Langius, FAIA, Director,
Michigan Region, AIA presiding. Keynote
address by Robert F. Hastings, FAIA,
Treasurer, AIA.

12:30 pm

Ladies Luncheon—Lochmoor Country Club
Complimentary cocktails and transportation
Book review by Mrs. Henry Wieduttes

2:30 pm

Reception Room—Seminar "Education and
Research"

Moderator—William Dudley Hunt, Jr. AIA
Panelists—Harold Horowitz, AIA, Supervising
Architect, National Science Foundation
Stephen A. Kliment, AIA, Editor, Architectural
and Engineering News
Gerald E. Crane, Crane and Gorwic,
City Planners

5 pm

Exhibit area—drawing for prizes

6:30 pm

Book Casino—Producers' Council
Cocktail Party

7:30 pm

Grand Ballroom—Annual Awards Dinner
Presiding Bruce H. Smith, President, MSA
Award of Gold Medal
Award of Draftsmen's Competition Prizes
Award of Exhibitors' Citations
Address by J. Roy Carroll, Jr. FAIA, President
The American Institute of Architects

FRIDAY MARCH 20

9 am

Registration and Exhibits Open

10 am

Reception Room—Seminar "Architecture—
Building Use and Occupancy"

Moderator—William Dudley Hunt, Jr., AIA

Panelists—Howard T. Johnson, National

Industrial Engineer, Avon Products

Donald O. Ross, AIA, University Architect,

Michigan State University

Jim Lucas, Director of Public Relations,

Herman Miller Company

12 noon

Ladies Champagne Luncheon—Rivera Court,
Detroit Institute of Arts

Speaker, Willis F. Woods, Director,
"Art in Your Lives"

Tour of Shakespeare Exhibition

12 noon

Exhibit Area—Drawing for Prizes and
Buffet Luncheon

12:30 pm

Sheraton Room—Student Program and
Buffet Luncheon

2:30 pm

Reception Room—Seminar "Office
Practice and Procedures"

Moderator—William Dudley Hunt, Jr., AIA

Panelists—Robert J. Piper, AIA, Editor

AIA Handbook of Professional Practice

Daniel Schwartzman, FAIA, Chairman,

Commission on Professional Practice

Dean F. Hilfinger, AIA, Chairman, AIA

Committee on Office Procedures

5 pm

Exhibit Area—Drawing for Prizes

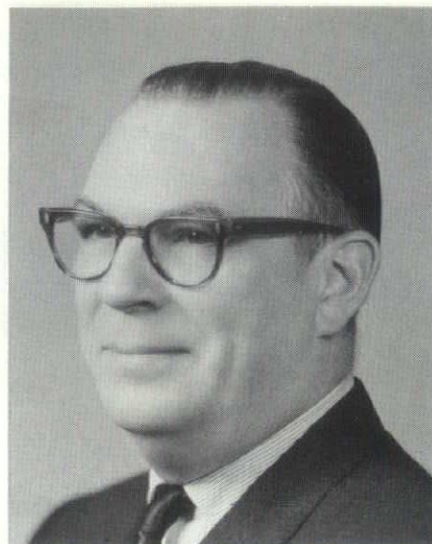
6 pm

Exhibits close

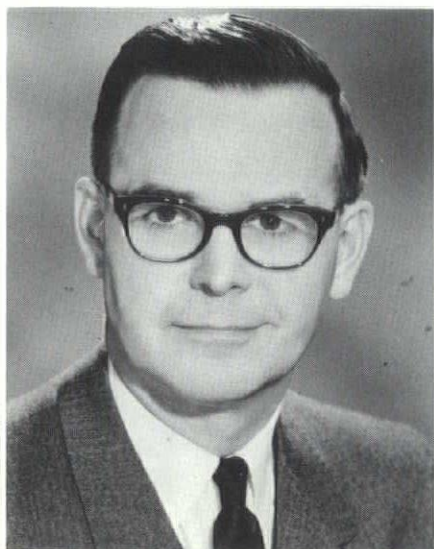
7:30 pm

Cobo Hall Ballroom—Building Industry
Jubilee Banquet. Fenby Carr Orchestra
and show with Belinda Blanchard, vocalist

J. Roy Carroll, Jr., FAIA—President of the American Institute of Architects. Partner—Carroll, Grisdale & Van Alen, Architects, Philadelphia. B. Arch.—1926 and M. Arch.—1928, U. of Penna. Henry Gillette Woodman Fellow—1941. Served as Asst. Prof. and Exec. Chairman, Design Staff, U. of Penna. Past President, Philadelphia Chapter, A.I.A. and Penna. Society of Architects. Regional Director, Middle Atlantic Region, A.I.A., 1956–59; Secretary, A.I.A., 1960–62; Vice President, 1963. Winner of numerous awards and competitions. Active in civic, collegiate and professional groups. Resident of Swarthmore, Penna.



J. Roy Carroll, Jr.



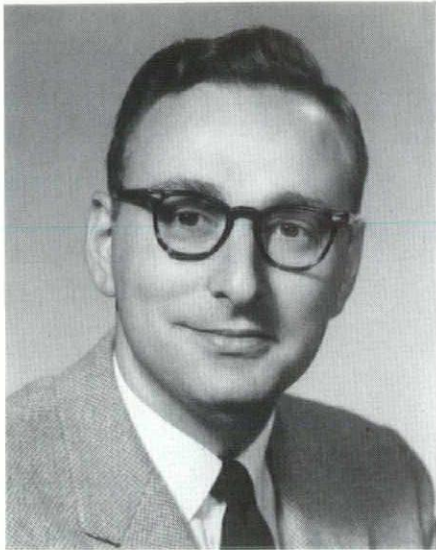
Robert F. Hastings

Robert F. Hastings, FAIA—Treasurer of the American Institute of Architects. President, Smith, Hinchman & Grylls, Inc. B.S. in Arch. Eng.—U. of Illinois—1937, with high honors. Past President, Detroit Chapter, A.I.A. Editorial Consultant to Architectural Record. Member A.I.A. Three Man Commission on Education, Committee on Industrial Architecture, Committee on Academic Training and Committee on the profession. Member Advisory Committee to the Department of Architecture, U. of Detroit. Member, Michigan Society of Prof. Engineers, Engineering Society of Detroit and American Society of Civil Engineers. Currently Chairman of the Detroit Chapter and M.S.A. Committees on Registration.

William Dudley Hunt, Jr., AIA, recently appointed publisher of the AIA Journal. Native of New Orleans; B. Arch., Tulane University, B.S. in mathematics, Jacksonville State College; instructor at Tulane, Jacksonville and U of Florida; visiting lecturer at other schools. Edited series on "Comprehensive Architectural Services" for AIA Journal. Senior Editor, Architectural Record, 1958–1963; consultant to McGraw-Hill Book Company and F. W. Dodge Corp.; author of numerous books.



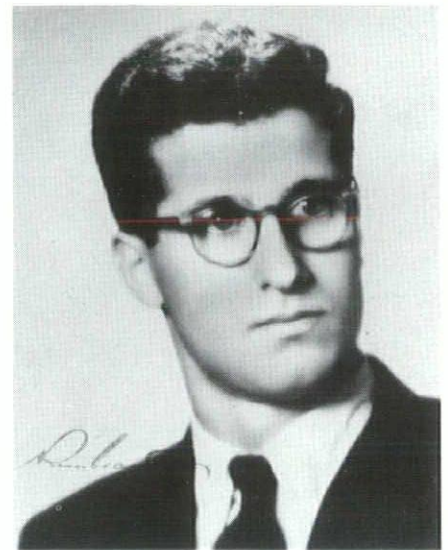
William Dudley Hunt, Jr.



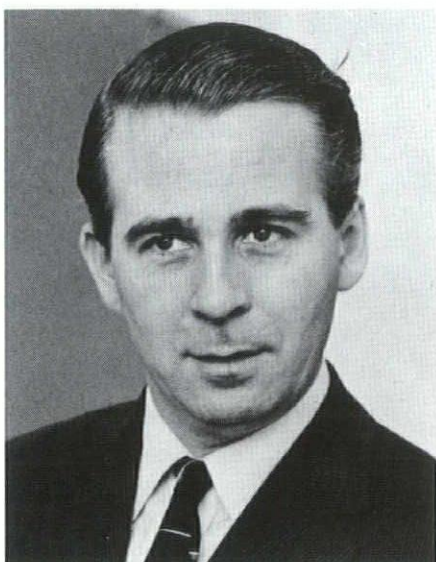
Harold Horowitz

Harold Horowitz, AIA, Supervisory Architect, National Science Foundation, Washington, D.C. Studied at Illinois Institute of Technology and M.I.T. Was Research Assistant, Southwest Research Institute; Assistant to Director of Research, Outcalt, Guenther & Associates, Cleveland; Research Associate, Albert Farwell Bemis Foundation, M.I.T. Visiting Critic—Syracuse University, member, Committee on Research and Graduate Studies, A.C.S.A.; has served on several committees of the Home Conference, National Safety Council.

Stephen A. Kliment, AIA, Editor, Architectural & Engineering News. B.Arch., M.I.T., 1953; M.F.A. in Architecture, Princeton, 1957. Was designer, Skidmore, Owings & Merrill, New York, 1956, 1957-1959; Reeb-Draz & Associates, Cleveland, 1959-61. Editor Architectural & Engineering News since 1961. Member New York Chapter, AIA.



Stephen A. Kliment



Gerald E. Crane

Gerald E. Crane, Architect, Planner. Born and educated in London, England. Undergraduate degree in Architecture, 1950, post graduate degree in Town Planning and Civic Design, 1954, University College, London. Master's degree in Regional Planning, as Fulbright Scholar, Cornell University. Registered as architect in Michigan. Associate member, Detroit Chapter, AIA, Associate Member, R.I.B.A. and British Town Planning Institute. Principal, Crane & Gorwic, Inc. Currently engaged in renewal projects in Detroit and planning and design consultants to University of Kentucky, and City of Flint. Lecturer at Cornell, Notre Dame, University of Michigan, Michigan State University, Syracuse University and Dept. of Urban Planning, Wayne State University.

Howard T. Johnson, National Industrial Engineer, Avon Products. B.S., U.S. Naval Academy, 1944; B.C.E. and M.C.E., Rensselaer Poly. Institute. USN Civil Engineer Corps, 1948-53; Sales Engineering, 1953-55. Joined Avon Products as Manager of Engineering at Morton Grove, Illinois plant—1955; made National Industrial Engineer, 1961.



Howard T. Johnson



Donald O. Ross

Donald O. Ross, AIA, University Architect, M.S.A. Attended M.S.C.; I.C.S. Diploma - 1938. Registered Architect, 1948. Bond-Munson Company, 1932 - 42; Shop Engineer, Nash Kelvinator 1943 - 44; Associate and partner, Orlie J. Munson 1945 - 56. Supervising Architect M.S.U. 1957 - 60; University Architect, 1961.

Jim Lucas, Director of Public Relations, Herman Miller, Inc. B. Fine Arts in Music Education. Has been salesman of band instruments, radio advertising, furniture; advertising agency representative. Has lectured to students of architecture and interior design at universities throughout the United States; has presented commentaries on subject of environment at several state and regional AIA conventions. Hobby is amateur theater; has appeared in summer stock.



Jim Lucas

Committee Members

GENERAL CHAIRMAN

Richard K. Albyn

VICE CHAIRMAN

Samuel D. Popkin

REGISTRATION

Richard D. Adair

GENERAL DESIGN

Lyn E. Graziani

PRODUCERS EXHIBITS

William S. Quinlan

ARRANGEMENTS

James B. Hughes

PUBLICITY

Robert J. Domke

ARCHITECTURAL

Donald P. Gustafson

DRAFTSMEN'S COMPETITION

Jack I. Lamb

STUDENT ACTIVITIES

Harold Binder

PRODUCER'S COUNCIL LIAISON

Frank E. North

LADIES' ACTIVITIES

Mrs. Philip J. Meathe

Mrs. Thurston R. Jahr

ADVISORS

James B. Hughes

Ann Stacy

Philip A. Nicholas

BUILDING INDUSTRY

JUBILEE BANQUET

John D. Maas

Frank E. North

James B. Hughes

MSA Exhibitors

American Olean Tile Co., Inc.

*American Standard
(Industrial Div.)*

Bauer-Foster Floors, Inc.

D. D. Burford and Co.

Burns & Russell Company

The Philip Carey Co.

Ceco Steel Products, Corp.

Century Brick Co.

Decatur Iron and Steel Co.

Decatur Wood Products

Detroit Edison Company

Detroit Partition Co.

Dow Chemical Co.

The Engineered Products Co.

Ford Motor Company

Glass & Paint Products Sales

Four Seasons Window Corp.

*Al Hann of Hillyard Sales Co.
(Eastern)*

Huck Manufacturing Co.

*Hunter Products
(Division of Kaltz Fuel, Inc.)*

Huntington Laboratories, Inc.

*Kaufmann Window and
Door Corp.*

*Kennatrack Division
Ekco Products Co.*

Knoll Associates, Inc.

Macomb Wholesale Lumber Co.

*Metropolitan Detroit Face Brick
Dealers Association*

Michigan Bell Telephone Co.

*Michigan Builders Supply Co.
Michigan Vitrified Tile Co.*

Michigan Consolidated Gas Co.

The Nichols Co.

O'Brien Corporation

Pittsburgh Plate Glass Co.

Pre-Cast Industries, Inc.

*Producers Council,
Michigan Chapter
Stanley Rontal Co.
Abbott K. Schlain Co.
Edward J. Shereda, Inc.
Speaker and Associates, Inc.
Structural Clay Products Institute,
Region (4)*

E. W. Tile Company

Tuttle & Bailey, Inc.

Ultra-Shade Corp.

U. S. Plywood Corp.

Valentine Stone & Marble Co.

Valley Window Sales Co.

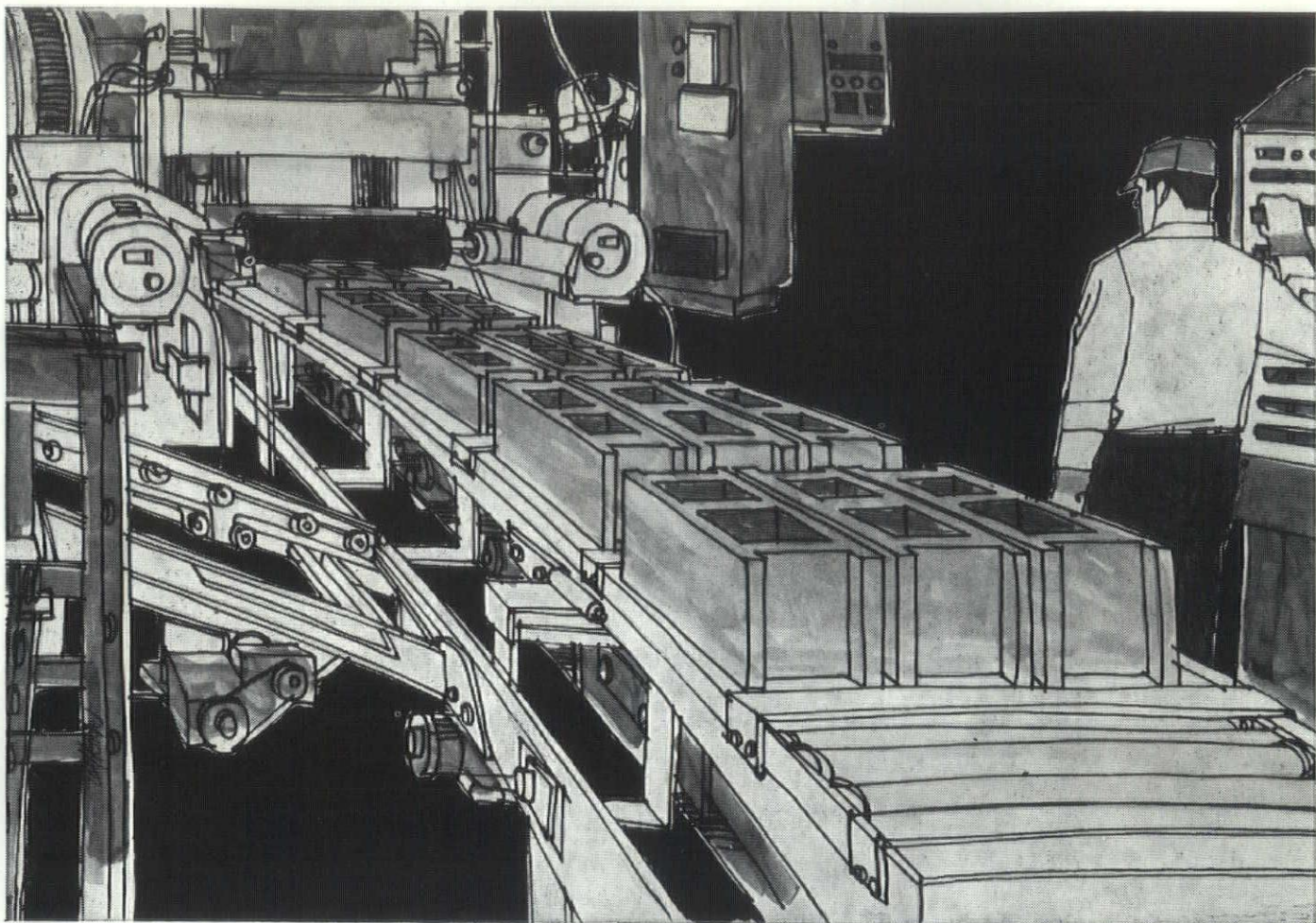
Walled Lake Manufacturing Co.

Walich Lumber Company

White Pine Sales Co.

Williams Pivot Sash Co.

*Wolverine Porcelain
Enameling Co.*



WHAT AUTOMATION IS TODAY ACHIEVING FOR AMERICA'S \$600-MILLION CONCRETE MASONRY INDUSTRY

In the last ten years, the price of concrete masonry has remained stable, while the average price of all building materials has risen 88%. Increasing use of automation in the nation's 3,700 concrete masonry plants can be expected to further hold down costs—and improve quality . . . making concrete a "best buy" in building materials.

Today, a single automatic block machine can turn out 10,000 units in a normal working day. Handling, stacking and curing operations can be automated. And push-button control of the concrete mix assures a new accuracy and uniformity that produces masonry of the highest quality.

Once noted mainly for its utility, concrete masonry has become a new and exciting material. Shapes, sizes, colors and textures are almost unlimited. Last year, of all masonry used for walls, 70% was concrete masonry.

Contributing importantly to such advances in the use of concrete are 79 leading (and competing) cement companies who comprise the Portland Cement Association. Research findings and technical data are made readily available to the entire building industry through the Association's 35 nationwide field offices.

PORTLAND CEMENT ASSOCIATION

Stoddard Building, Lansing, Michigan 48933

*A national organization to improve and extend the uses
of portland cement and concrete*

Now that you've finished
the Schematics,



what about
your presentation?

You've just finished your conference with the Landscape Architects, the City Planners have given their opinion. Your Parking Consultants have come through with some excellent cost studies. The Engineering and Interior consultants have wrapped up their end. Now you're ready for the presentation.

Just as you have called in experts in their fields, now is the time to call in a seasoned specialist in the Graphic Arts. Gary Grout of the Ann Arbor Press is just such a specialist. Backed up by a team of designers, writers, photographers and experts in Letterpress and Offset Lithography. You can be confident your many hours of effort will be presented in the professional manner that your work deserves. A call to Gary at NOrmandy 2-3145, will bring him within hours, with samples, to your office. Why not call him today, we're sure you'll be glad you did tomorrow.

Ann Arbor 662-3145

Detroit 963-4054

ANN ARBOR *Press* **INC.** 

Printers and Consultants to the MSA Bulletin



producers council

Zonolite Testing and Research

Assure Quality Insulation

And Fireproofing



Edward D. Kerr
Architectural Representative,
Zonolite Division, W.R.
Grace & Co.

Zonolite Division of W. R. Grace & Co. is continuing its research in the field of insulation, lightweight insulating concrete and acoustical and fireproofing plasters as construction soars in the sixties.

Water-repellent coated vermiculite has become a favored block and cavity wall insulation due to its low cost and fireproofing qualities. Exposed masonry walls need not be cold and damp with the incorporation of good internal insulation. Albert Kahn Associates chose this means to provide comfort and fuel economy on Congregation Shaarey Zedek in Southfield, Michigan.

Zonolite vermiculite insulating concrete for roof decks is applied by approved applicators who have demonstrated knowledge of and many years experience in applying this material. Each of these firms has entered into a contractual agreement with the Zonolite Division or its licensees which requires that insulating concrete be placed in accordance with the Vermiculite Institute's Standard Specifications for Vermiculite Insulating Concrete.

On each project, where so specified, Zonolite and the applicator will jointly sign and present to the owner a certificate to insure that quality workmanship and materials are used on each certified project. The Zonolite Division requires that the applicator maintain adequate job records which include a log of mix proportions, water content, wet densities and weather conditions.

Laboratory test specimens are taken

on each certified project. The samples are shipped in specially designed containers to the Division's Building Materials Research Laboratory in Evanston, Illinois for testing. On each certified project, the designing architect is provided with a laboratory report, giving the dry density and compressive strength of the concrete used.

J. L. Hudson's new Westland Shopping Center in Nankin Township will employ this highly fire-safe concrete as the roof deck.

Another new construction industry innovation which already has wide acceptance is direct-to-steel spray fireproofing.

Zonolite Division has been a leader in fire-tests since lightweight aggregates were first employed in plastering. Through the Vermiculite Institute, Zonolite Division can claim more fire-tests than any other basic manufacturer in the field.

Plaster or cementitious type spray fireproofing, such as Zonolite's Mono-Kote, forms a strong bond to steel beams and decks, provides a hard, durable coating and is economically applied by standard plastering machines.

Many Michigan buildings are already protected with Mono-Kote and Detroit has two good examples in the new Main Post Office and the Engineering Building for Cadillac Division, General Motors Corporation.

Zonolite products are manufactured at the firm's Dearborn plant—one of 45 throughout the country.



fiftieth annual convention / march 18-19-20—1964

THE MICHIGAN SOCIETY OF ARCHITECTS

ADVANCE REGISTRATION FORM

REGISTRATION Member \$10.00* _____ @ \$10.00 \$ _____
Wife No Charge
Guest \$10.00* _____ @ \$10.00 \$ _____
Student \$ 2.00* _____ @ \$ 2.00 \$ _____

Member's and guest's fee includes lunch on Friday and tickets for two drinks at the bar in the Exhibit Area; student's fee includes lunch on Friday.

WEDNESDAY Carnival Free to Registrants

THURSDAY Men's Luncheon . . . \$ 3.75 _____ @ \$ 3.75 \$ _____

Ladies' Luncheon—Lochmoor Country Club

(Complimentary

Cocktails) . . . \$ 3.50 _____ @ \$ 3.50 \$ _____

Annual Awards Dinner \$ 5.50 _____ @ \$ 5.50 \$ _____

FRIDAY Men's Luncheon . . . Included in Registration Fee

Ladies' Champagne Luncheon,

Art Institute . . . \$ 4.00 _____ @ \$ 4.00 \$ _____

Building Industry Jubilee Banquet—Separate reservation forms will be mailed

TOTAL \$ _____

NOTE: Guests accompanying registrants will be required to have tickets to these events. Registrants taking advantage of this advance registration offer may pick up their badges and tickets at the registration desk after 5 p.m. Wednesday, March 18.

No Cancellations will be accepted after Monday, March 16.

NO TICKETS WILL BE MAILED

NAME _____

WIFE'S NAME _____

FIRM NAME _____

TELEPHONE NO. _____ DATE _____

ENCLOSED IS THE CHECK IN THE AMOUNT OF \$ _____

**Mail This Form To: MICHIGAN SOCIETY OF ARCHITECTS
28 WEST ADAMS
DETROIT, MICHIGAN 48226**


Payment Must Accompany This Registration Form

Maurice V. Rogers Company

GENERAL
CONSTRUCTION

UNiversity 3-3171
15849 WYOMING AVE.
DETROIT 38, MICHIGAN

TAKE A
CLOSE LOOK AT



MAPA

CONTRACTORS

- EXPERIENCE
- PRE-QUALIFICATION
- MODERN EQUIPMENT
- SKILLED PERSONNEL
- PROVEN RELIABILITY
- BUSINESS INTEGRITY

You can improve the quality of any asphalt paving by looking for these qualities in the contractor.

For Information and Specifications **WRITE:**

MAPA

**MICHIGAN ASPHALT
PAVING ASSOC. INC.**

LANSING / 708 Prudden Bldg.
Area code 517—Phone 482-0111

NEWS

New Members Assigned to Detroit Chapter

Since last reported in the Bulletin, eleven new corporate members have been elected by the Institute and assigned to the Detroit Chapter. They are: Louis M. Berklich, Victor R. Cramer, Jr., Jude T. Fusco, John J. Graham, Lyn E. Graziani, Donald E. Hoey, Theodore E. Kurz, Robert A. MacPherson, William J. Prochaska, Billy D. Stewart and Harold E. Ward.

New Associates of the Detroit Chapter include Jerome Chirco, Charles A. Danowski, Marvin Feys, Ely M. Fishkin, Garry D. Harley, Charles T. McCafferty and Carl E. Nielsen.

Emeritus membership has been approved by the Institute for Mossie Belco, Ernest Greenberg, Fredrick K. Hine, Don W. Hunter and William E. Kramer.

Grand Valley Chapter Proposes By-Laws Changes

At a meeting on February 14, 1964, the Subcommittee on Bylaws met and reviewed changes to the present bylaws proposed by Mr. DeVries.

The Subcommittee is in agreement with the procedure of following closely the current edition of the Institute's "Advisory Form of Chapter Bylaws," and of adopting most of the Supplementary paragraphs in the belief that their inclusion will allow the Chapter to operate with a greater degree of flexibility.

Although we did not feel that sufficient time was available to arrive at a Subcommittee reaction to each of the changes proposed, the desirability of processing these Bylaws at an early date seems to warrant their being reviewed and resolved directly at the Executive Committee level.

An attorney has been contacted relative to the legal work necessary for the Chapter to incorporate. Assuming that there would be few if any problems in bringing the Chapter Bylaws into conformance with Michigan law, incorporation should take no longer than a week or two, and should cost somewhere between \$300.00 and \$500.00.

The Subcommittee recommends that consideration be given to the advisability of retaining an attorney immediately after approval of the Bylaws

by the Executive Committee, a process which will assure that the revised Bylaws are in final form when they are presented to the membership for approval.

SUBCOMMITTEE ON BYLAWS
James Nachtgall, Chairman

Minutes—Detroit Chapter Committee on Education

The Committee on Education met at the Engineering Society of Detroit on January 16, 1964.

In attendance were Msrs. Binder, Blakeslee, Johe, Muschenheim, Pellerin and Fr. Green. Two representatives of the U. of M. Student Chapter also attended.

The following items were discussed:

- Mr. Blakeslee reviewed various "procedures" this committee had recommended in regard to student chapters. It was obvious that some of these had not been acted on. It was decided to refer the appropriate items to the Executive-Director's office for routine processing.
- The map of Architectural Points of interest was reviewed. The question of making it more definitive was discussed. It was decided that the Faculty representatives of the various schools of architecture were most qualified to make valid selections and so this would be done by this committee. Mr. Johe suggested that the guide follow the pattern of certain European examples which are printed descriptions, locations, etc. keyed to a standard city map so that keeping it current and reproducing it would be simplified. Mr. Johe offered to bring a sample of such a guide to the next meeting.
- Coordination of programs: Representatives of the faculties were asked to forward listing of planned programs, both of department and student activities. Listing from U. of D. has been received. Proposal was made that the "Bulletin" publish a definitive calendar of events. This proposal was forwarded to the Chapter. A rather unsatisfactory answer has been received.
- Catalogues and other data on the Architectural program at U. of D. and L.I.T. were requested. Material from U. of D. has been received.

E. Institute for Economic Education: Mr. Binder reported briefly on this program aimed at familiarizing high school students with architecture by means of a visit to an architectural office.

F. Mr. Binder reported briefly on a "Consumer Housing Program" sponsored by the M.S.U. Extension Service. Mr. Binder and Mr. Dworski represented the Chapter on this program.

G. The bulk of the meeting was given over to a discussion of the student program at the M.S.A. Convention. The students requested the maximum exhibit space offered. They also inquired about the use of models. Any models would have to be small so as not to restrict circulation. At least two models can be accommodated, more if they were small enough. The Exhibit Committee would have to know requirements for model stands in advance. It was suggested that work of members of student chapters be featured. Selections to be made jointly by student chapters and faculty advisors. Students will prepare approximate title panel and furnish their own "hanging committee".

The students requested a luncheon-seminar event scheduled for Friday, March 20, 1964. Also requested that there be no restrictions on attendance and that guests outside the M.S.A. area be invited.

In order to avoid limitations on attendance at the luncheon, the M.S.A. has decided that it is necessary to charge \$2.00 per lunch. This represents about 60% of the cost to M.S.A. If funds are available, four officers from each student chapter will be invited as guests of the parent chapter.

The students also requested a bus tour of Detroit area architecture. Details of this have not been completed. The availability of funds depends largely on the number of expected participants in all activities. It appears to be financially feasible, but the desired agenda has to be established before much can be done on this part of the program.

The following architects have accepted an invitation to meet with the students for the seminar program: Gunnar Birkets, Sigmund Blum, John Haro and William Kessler.

Our next meeting will be held in Ann Arbor at the Michigan Union. It will be a combined meeting with the newly appointed Huron Valley Chapter Committee on Education.

*Harold Binder, AIA
Chairman, Committee
on Education*

New Office Location

James & Savage Corporation, General Contractors, have announced the moving of their offices, effective February 22nd, to 300 East Seven Mile Road, Detroit, Mich. 48203. Telephone number: 891-4305.

Denyes Associates Announce Reorganization

Harry M. Denyes, Jr. Associates, 615 Community National Bank Building, Pontiac, Michigan, have announced a recent reorganization to broaden the scope of architectural services and improve intra-office efficiency.

Henry S. Orbach, registered architect, has been made an associate of the firm in charge of design. Jack I. Lamb, AIA, continues in the capacity of chief

draftsman, office manager and secretary of the corporation. Richard A. Pearson has been placed in charge of public relations in addition to duties as vice-president and project manager.

Harry M. Denyes, Jr., AIA, president, stated that recent remodeling and enlargement of office and drafting room have added considerably to the facilities and operations.

Current work of the firm consists of institutional, commercial and educational projects. Recently completed is the four-story addition to First Federal Savings and Loan of Oakland, main offices in Pontiac. Ready for construction is the new Children's Village for Oakland County Juvenile Division of Probate Court.



STANDS FOR THE FUTURE...
AND
THE FUTURE IS ASSURED WITH



MICHIGAN ARCHITECTS:

You can design with confidence
and specify with assurance when
you award your next project to a
GLF&E member.

Great Lakes Fabricators & Erectors

Suite 809, New Center Bldg., 7430 Second Avenue

Phone: 626-2286

Detroit, Michigan

SONA
CEMENT
PRODUCTS CO.

Manufacturer of
Quality Masonry Units Since 1922

Steam Cured
Slag Light Weight
and Concrete Blocks

Brick and Lintels
Builders Supplies

7475 Intervale Ave.
Detroit 38, Mich.

WE 2-4828

WE 3-6160

JOHN H. FREEMAN
COMPANY

specification assistance

- ✓ Distributors
- ✓ Builders' Hardware
- ✓ Contractors' Supplies

3627 CASS at BRAINARD
DETROIT 1, MICHIGAN
TEMPLE 1-6760

ZEBROWSKI
& ASSOCIATES

INCORPORATED

DEMOLITION CONTRACTORS

- RESIDENTIAL
- COMMERCIAL
- INDUSTRIAL

LICENSED BY CITY OF DETROIT AND
THE STATE OF MICHIGAN

• FULLY BONDED •

COMPLETE INSURANCE PROTECTION
NO JOB TOO SMALL OR TOO LARGE

WE GIVE THE
HIGHEST ALLOWANCE
FOR SALVAGE

30870 W. Eight Mile
Farmington, Mich.
474-6734

M. Den Braven

■ Our 52nd Anniversary ■

— SHEET METAL —

— VENTILATING —

— AIR CONDITIONING —



9080 Alpine Avenue
Detroit 4, Michigan
WE 3-7494-5-6

George E. Young
Nursery, Inc.

Landscape
Contractors

Service Since
1929

12710 West Nine Mile Road
Oak Park 37, Michigan
LI 1-7792

TRANSIT-MIXED
CONCRETE

▼
AUTO-CLAVE
CURED BLOCK
FACE BRICK

•
Complete Line of
Building Supplies



BOICE

BUILDERS' SUPPLY

MANUFACTURERS OF
BRICK—BLOCK—CONCRETE

545 Telegraph Road Pontiac 19, Michigan
Telephone Federal 5-8185

SPECIFY STEVENS BUILDING MATERIALS

- WIDEST SELECTION ■ HIGHEST QUALITY
- BEST SERVICE ■ BROADEST EXPERIENCE
- COMMERCIAL—INSTITUTIONAL—RESIDENTIAL

Product quality is a tradition at Stevens! For more than 50 years, the Building Materials Division of Frederic B. Stevens has supplied builders and contractors with the finest structural clay products from the world's leading manufacturers. Stevens has earned and maintained a reputation for brick and tile that is unequalled in the Michigan Area. No matter what your material requirements may be, you can depend on Stevens for the very best in Face Brick and Glazed Structural Facing Tile.

Up-to-date stocking techniques and latest material handling systems and equipment, at a conveniently-located yard, mean that you get the service you want. Delivery is fast and efficient; building schedules are promptly met. Visit our show room and main yard. See for yourself why Stevens is the leading building material supplier in the area!

ONLY STEVENS REPRESENTS ALL OF THESE STRUCTURAL CLAY PRODUCTS MANUFACTURERS!

Acme Brick Company • Arketex Ceramic Corporation
• Bickerstaff Clay Products • Charleston Clay Products
• Eastvale Clay Products • General Shale Products
Corporation • Goshen Brick and Clay • Glen-Gary Shale
Products Corporation • Medal Brick and Tile Company
• Marion Brick Corporation • Metropolitan Brick, Inc.
• Owensboro Brick & Tile Company • Moland-Drysdale
Corporation • Richland Shale Products • Shenandoah
Brick Company • Standard Clay Products • Streater
Brick Company • Western Brick Company.

STEVENS ALSO STOCKS THESE BUILDING MATERIALS FOR YOUR CONVENIENCE:

COMMON AND PARAPET BRICK • QUARRY
TILE • FLOOR BRICK AND PAVERS • SURE-
KLEAN • SALT GLAZED STRUCTURAL
FACING TILE AND BRICK • STRUCTURAL
GLAZED ACOUSTICAL TILE • SOLAR
SCREENS • TERRA COTTA • ANTI-HYDRO
• ARMORTOP • ARIDCLEAR • STEEL
COLUMN MOLDS • FIBRE COLUMN FORMS
• MASONRY SAW BLADES AND SAWS
• CERAMIC VENEER.

MAIN YARD
14440 Third Street
Highland Park

frederic b. STEVENS division

THE UDYLITE CORPORATION

1800 - 18th Street • Detroit, Michigan 48216

Telephone: 825-0725

NEWS

NAAMM Schedules Sealants, Metal Finishes Seminars

The National Association of Architectural Metal Manufacturers has announced that its Tenth Regional Seminar on "Sealants" will begin at 9:00 A.M. and the Seminar on "Metal Finishes" at 10:30 A.M. at the Statler-Hilton Hotel in Detroit, on March 24, 1964.

Panel moderator for the Seminar on "Sealants" will be Jack M. Roehm, Vice-President, Research, Kawneer Company Division, American Metal Climax, Inc. Moderator for "Metal Finishes" seminar will be E. R. Holtz, President, Desco Metals Company.

The guest speaker at the noon luncheon will be G. K. Garden, M.R.A.I.C., Research Officer, National Research Council, Division of Building Research, Dominion of Canada in Ottawa. His subject will be "Rain Penetration and its Control."

Copies of the program listing the respective panel members, their affiliations, and the seminar schedule can be

obtained from NAAMM at 228 No. LaSalle Street, Chicago, Illinois-60601; from the Monthly Bulletin office; or by phoning E. R. Holtz at 313-LO 7-0300 in Detroit.

Architectural interest in the March 24 seminar has prompted NAAMM to encourage members of NAAMM to bring architects as their guests, and to open the March 24 seminar to all architects and their representatives, at a nominal registration fee of \$10.00, which includes the coffee breaks, the luncheon, and the NAAMM cocktail party.

Alpha Rho Chi Plans 50th Anniversary Events

The kick-off event of a year long commemoration of the 50th Anniversary of the founding of Alpha Rho Chi, National Professional Architectural Fraternity, will be held on April 25, 1964, according to R. E. Greager, A.I.A., Chairman of the event. Full details will be published in the April issue of the Bulletin.

U. of M. Students Receive Working Drawing Awards

At the recent Charter Night of the Huron Valley Chapter, A.I.A., U. of M. architecture students Daniel Melnin and Norman Hall received awards in the working drawing competition sponsored by Miracol Engineering. The awards were presented by John Mirageas for Miracol.

The two winners were selected from forty-two entries. Judges for the competition were F. Huston Colvin, president of the Chapter, Walter B. Sanders, Charles W. Lane, Robert C. Metcalf, Henry S. Kowalewski and Zdravko T. Gerganoff, all charter members of the Huron Valley Chapter.

U. of M. Seeks Successor for Dean Philip N. Youtz

A faculty committee is now considering candidates for the position of Dean of the College of Architecture and Design at the University of Michigan. Philip N. Youtz, FAIA, who has been Dean of the College since 1957 will retire in June.

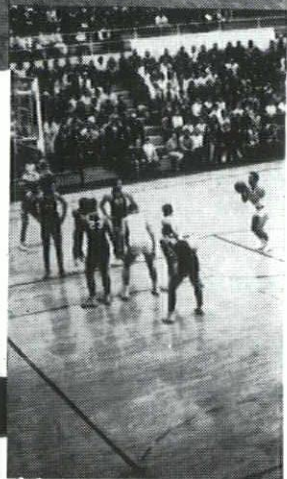
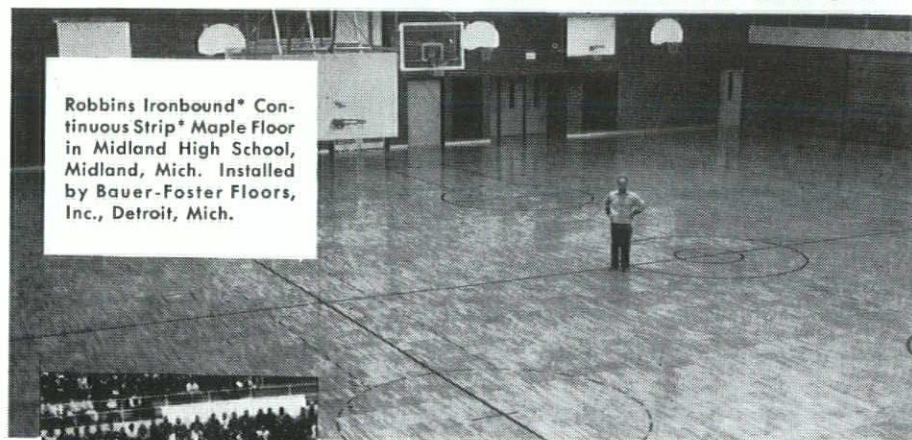
Prof. Charles Cares of the landscape architecture department and chairman of the committee which is recommending candidates for the deanship explained that the final decision will rest with the Board of Regents.

"We're looking for a new dean among architects, artists, planners and teachers," said Prof. Cares. "Although we're not especially looking for a big-name architect, we are looking for a person who understands the problems of design. Since more than one discipline is involved in this college, it is quite conceivable that we won't find a man who's had experience in each field. However, whoever is chosen must know a great deal about administration," Prof. Cares explained.

The college includes the departments of architecture, art and landscape architecture.

ROBBINS' UNIFORM RESILIENCY KEEPS PLAYERS AT THEIR BEST

Robbins Ironbound® Continuous Strip® Maple Floor in Midland High School, Midland, Mich. Installed by Bauer-Foster Floors, Inc., Detroit, Mich.



Uniform resiliency is all-important in gymnasium floors because it inspires fast, "bouncy" action and cuts wear on leg muscles. This important feature is a built-in quality of every Ironbound floor, assured by the way Ironbound flooring is laid — over mastic and cork — and interlocked with sawtooth steel splines.

Write or call today for full detailed information on specifications and cost estimates.

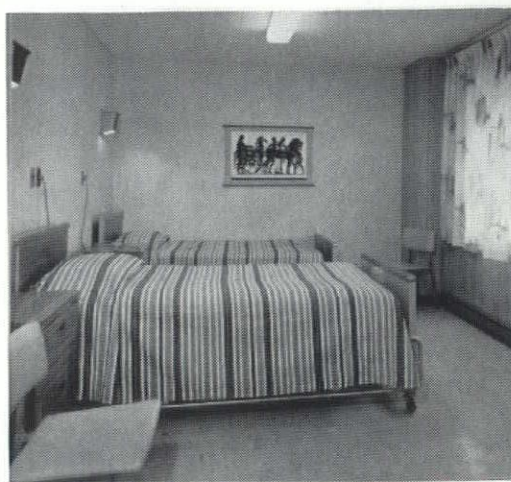
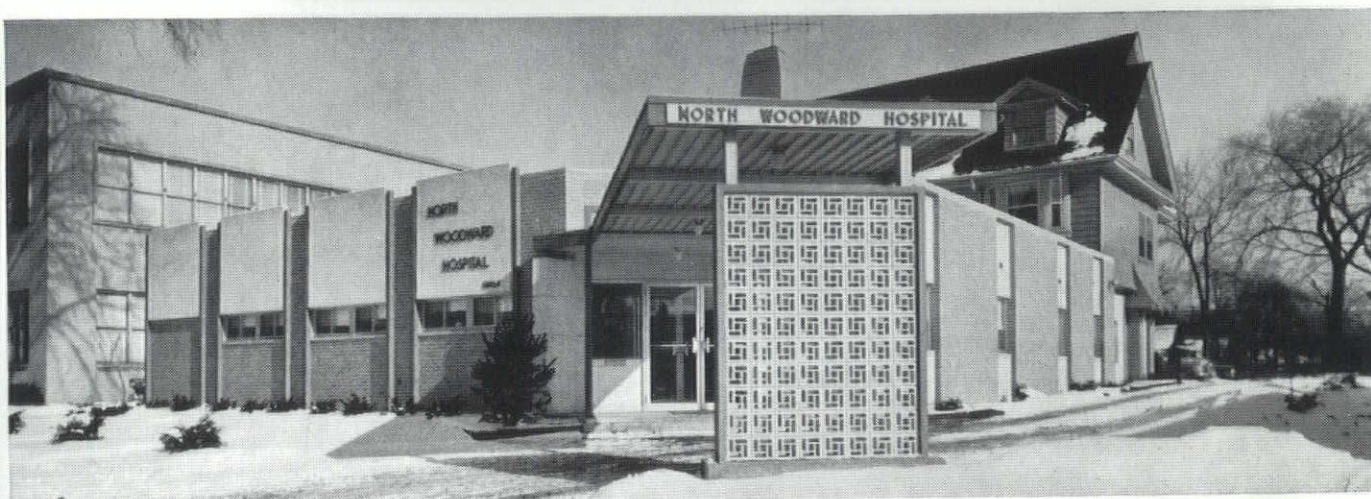
BAUER-FOSTER Floors, Inc.

10401 Lyndon Avenue, Detroit 38, Michigan
Phone: 933-3623

Stemplowsky Named Wright Associate

Clifford N. Wright, Architects and Associates, 4066 West Maple Road, Birmingham, Michigan announces the election of Johnston P. Stemplowsky, AIA, as an associate.

Stemplowsky, Vice President & Secretary, has been with the firm since 1953. He is registered in Michigan and is a member of the American Institute of Architects, The Detroit Chapter, and the Michigan Society of Architects. He has worked closely with Mr. Wright in the design of all projects, and is very active in the residential field.



HOW ELECTRIC HEAT HELPED NORTH WOODWARD HOSPITAL CUT COST OF NEW ADDITION:

When the directors of North Woodward Hospital in Highland Park, Michigan, added a new hospital wing, they chose electric heat. In doing so, they not only saved \$7,000 in construction costs but got the extra bonus of better-than-average sound insulation—an important factor on a busy highway.

The heating plant in the original building was inadequate to provide for the new patient facilities. By adding electric heat, there was no need to install a new central heating plant—no need for a boiler room, stacks or elaborate controls.

And since each room's temperature is individually con-

trolled, rooms not in use need not be heated. "Bills are entirely within estimates made by Detroit Edison," reports the hospital management. Because electric heat is flameless, it's clean, quiet and trouble-free, requiring little or no maintenance.

Before you select a heating system for your new building or addition or existing building, consult an Edison Electric Heating Specialist. He'll be happy to discuss with you, your architect, engineer or electrical contractor how *you* can save on construction and maintenance costs. In Detroit, just call WO 2-2100, ext. 2223. Elsewhere call your Edison office. **EDISON**

Holmes Associates Introduce New GE Silicone Sealant

More than 300 architects have attended the recent unveiling of a new Silicone rubber sealant and caulking material for the construction industry being placed on the market by General Electric. The new material has its origins in super-durable rubbers which the Company developed for the missile and space industry.



C. E. Holmes, Pres. and Ray Reiger, Vice Pres., of Holmes Associates, Inc. at Mid-Michigan Chapter meeting.

The meetings were conducted jointly by General Electric and Holmes Associates, Inc., which will serve as the distributor of the new material in Michigan. Meetings were held in Detroit, Grand Rapids, Birmingham,

Flint, Lansing, Ann Arbor, Saginaw and Battle Creek-Kalamazoo; according to Clyde Holmes, President of Holmes Associates, Inc.

The material is designed for all types of construction sealing, including curtain wall, precast concrete, expansion joints as well as window glazing and other general sealing. It is being offered in cartridges and in bulk containers and is available in colors or in semi-transparent form. Applied as a soft paste, it sets in air to a durable rubber which adheres to most materials of construction.

The new Silicone sealant traces its ancestry to rock-like Silicone, a substance which produces extremely durable material. The estimated life expectancy of the Silicone construction sealant is more than 30 years.

'64 Maps to be off Press Soon

The Michigan State Highway Department has started taking orders for the 1964 Official Michigan Highway Map. State Highway Commissioner John C. Mackie said the new map will be off the press by mid-March.

Mackie said 800,000 maps will be printed. Copies are available free of cost by writing—on a post card, please—to: John C. Mackie, State Highway Commissioner, Lansing, Michigan.

Michigan Structural Conference Studies "Structures of the 60's"

The Michigan Structural Conference will present "Structures of the 60's" on Saturday, March 21, 1964 at McGregor Memorial Conference Center, Wayne State University, Detroit, Michigan.

Recognized leaders in the profession of structural engineering will present programs on modern developments in the design and construction of steel and concrete structures. The conference will also include a discussion of new techniques in soil analysis and foundation designs.

This all day symposium is being sponsored by the following:

Southeastern Branch of the Michigan Section of American Society of Civil Engineers
American Institute of Steel Construction, Inc.
Michigan Chapter of the American Concrete Institute
Great Lakes Fabricators and Erectors Association
Wayne State University
Soil Mechanics and Foundation Committee of Southeastern Branch of the Michigan Section of American Society of Civil Engineers
Portland Cement Association—Michigan District.

GLANZ
and
KILLIAN

Complete Mechanical Construction

*by Detroit's
fastest growing
mechanical contractor*

DETROIT, MICHIGAN 48208
TEmpLe 1-7820

BIG
CAPACITY
IN *Small* SPACE



AEROFIN *Smooth-Fin*
Heating and Cooling Coils

High ratio of surface area
to face area

High air velocities without excessive
friction or turbulence

Write for Bulletin S-55

AEROFIN CORPORATION

101 Greenway Ave., Syracuse 3, N.Y.

*Aerofin is sold only by manufacturers of fan system apparatus.
List on request.*

ENGINEERING OFFICES IN PRINCIPAL CITIES

● TO MEET INCREASING DEMANDS

BOOSEY

EXPANDS ITS SERVICES
IN MICHIGAN

YOUR REQUIREMENTS FOR

FLOOR DRAINS • ROOF DRAINS
BACKWATER VALVES • CLEANOUTS
INTERCEPTORS • SPECIALTIES

now immediately available from

NEW LARGER WAREHOUSE

More than ever before you can select and specify BOOSEY Plumbing Drainage Products with assurance that all requirements will be supplied promptly. The new facilities in the Detroit area are at your service from the planning stage to delivery.

NORMAN BOOSEY COMPANY
7648 West Chicago Blvd. Detroit 4, Mich.

Lorne COMPANY INC.
Mechanical Contractors

EXECUTIVE OFFICES

641 West Congress Street
Detroit 26, Michigan

Industrial and Commercial Installations of:
Power Piping, Process Piping, Heating,
Plumbing, & Air Conditioning

Branch Office
2487 East Bristol Road
Flint, Michigan

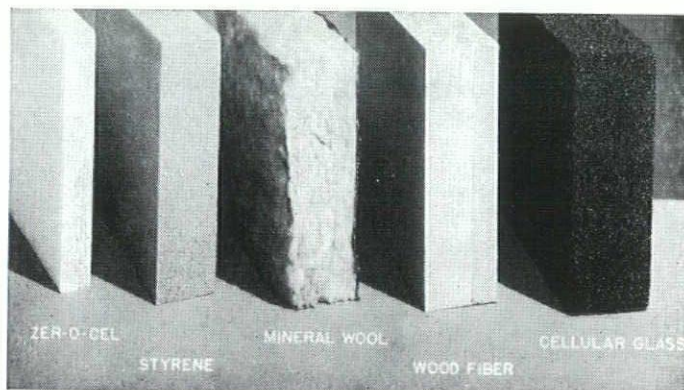
Branch Office
191 Anne Street S.E.
Atlanta, Georgia

We're proud to announce that we distribute
a truly superior RIGID FOAM INSULATION...

Gold Bond

ZER-O-Cel

This illustration shows the comparative thickness of ZER-O-CEL Insulation in relation to other insulation products required to give equal insulation value. In addition, ZER-O-CEL is non-burning (not just self-extinguishing) and has near isotropic properties. ZER-O-CEL is unmatched for dimensional stability.



Products and Services for the Construction Industry
INSULATION — PIPE COVERING — SEALANTS — ADHESIVES

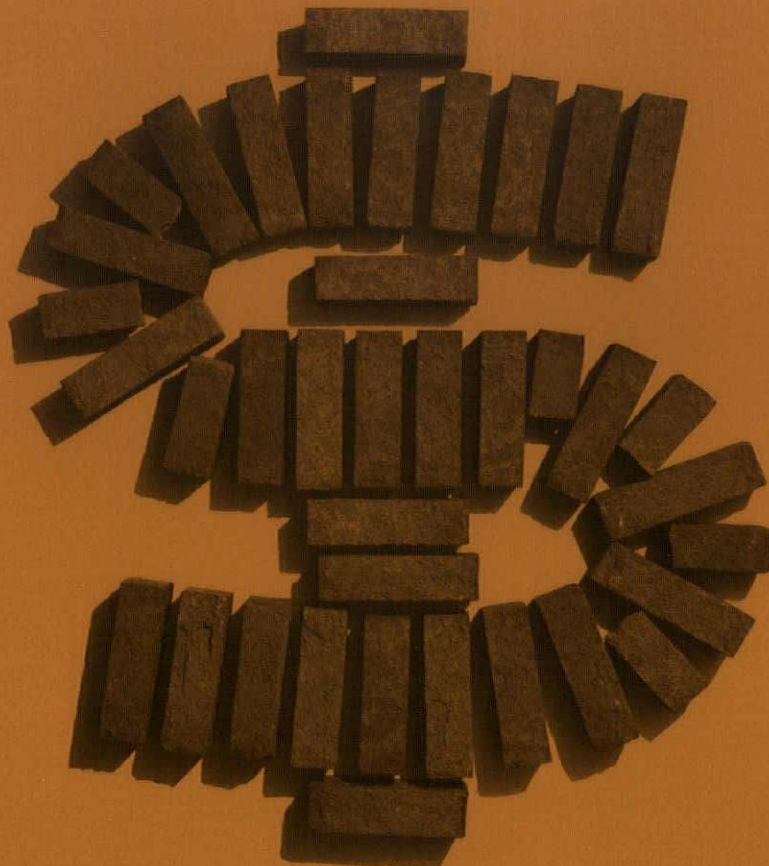
Technical Assistance • Fabrication • Warehouse Stock

STEPHENSON and LAWYER, Inc.

211 LOGAN STREET, S.W.

TELEPHONE 456-7281

GRAND RAPIDS 2, MICHIGAN



HOW MUCH DO BRICK REALLY COST ?

This is a question which might fall into the same category as, "How blue is the sky?"

For the architect however, it leads into some other questions that should be explored.

Q. How should initial cost of brick walls be figured?

A. On a square foot in-the-wall basis. Individual brick have a wide price range but hardly anyone but a brick manufacturer is interested in the properties or cost of one individual brick. On the other hand everyone, from the architect to the general public, is interested in the over-all wall and the way that wall looks and performs. Initial costs therefore should be figured on a square foot in-the-wall basis. On this basis the finest quality brick provide the architect with one of the most economical building materials available.

Q. Should initial costs be the only ones considered?

A. Initial costs are not the whole story. The building must be maintained, heated and cooled. The

Ultimate Cost Concept of economic analysis takes into consideration 15 separate factors to arrive at the actual cost of a building. These factors include initial cost, value of money, depreciation, maintenance costs, heating and cooling costs, insurance and taxes. A recent study made on a seven story building shows that on a tax paying structure the ultimate cost of a brick and tile cavity wall would be \$4.60 per square foot against \$7.86 per square foot for metal panel and \$18.29 for glass. On a non-taxable building (such as a school) the ultimate cost ranged from \$5.26 for the brick and tile cavity wall to \$30.02 for glass!

How much do brick cost? It depends on the type of wall, how they are used and a number of other factors. But of this you can be sure - - - brick give you color, texture, flexibility, strength and durability, plus true economy. This is a combination almost impossible to beat.

REGION 4 - STRUCTURAL CLAY PRODUCTS INSTITUTE
2556 CLEARVIEW AVENUE, NORTH WEST, CANTON, OHIO



CHAGRIN FALLS, O.: 15200 S. DEEPWOOD LANE
PITTSBURGH, PA.: 807 STANDARD LIFE BLDG.

**for effective
sealing,
cushioning,
insulation
and protection
for masonry
and concrete
construction...**

See the WESCO man!

Sales Representatives and Distributors of:

Dow Corning Silicone Rubber Sealant
Empire Emery Aggregates for Floors
Everlastic Corner Protectors
Everlastic Polyurethane Sealing Compounds
Mastercraft Precast Terrazzo
Pacific Sealants, Compriband
Plastic Mastic Epoxy
Stairbuilders Prefabricated Stair Forms
Williams Efficiency Waterstops
Williams Masonry Coping and Panel Seals
Williams Isolation & Control Gaskets

wesco, inc.

486 W. Eight Mile Road • Hazel Park, Michigan
Telephone: JO 4-6452 & LI 6-2467

Affiliated with Williams Equipment and Supply Co., Inc.

MICHIGAN DRILLING CO.

for

- Complete Laboratory Testing
- Diamond Core Drilling
- Soil Test Borings For Foundation and Other Structures



14555 Wyoming Ave.
Detroit 38, Michigan
WEBster 3-8717

CINDER BLOCK, INC.

9143 HUBBELL AVE.
DETROIT 28, MICHIGAN

VERMONT 8-3200

HORN-CLAVED
(High Pressure Steam Cured)

**Lightweight and
Standard Concrete**

Masonry Units

TURNER-BROOKS, INC.

Contractors for

FLOOR COVERINGS

AND

ACOUSTICAL MATERIALS

— SINCE 1933 —

9910 DEXTER DETROIT 6, MICH.
TO 8-2470

NEWS

Forrest Joins Burtman at Century Brick

Donald M. Forrest has joined Sam Burtman as a partner in Century Brick Company, it was announced recently by Burtman.

Century Brick was founded in 1934 by Burtman, after several years experience in the field with other suppliers. Burtman has been the principal stockholder in the company which he has headed for thirty years.

Forrest has had sixteen years experience in the field with the Frederick B. Stevens Co., now a division of Udylyte Corporation. For the past five years, he has been Manager of the Brick and Tile Division at Stevens.

In making the announcement, Burtman stated that there would be no change in the company name and that Century Brick would continue its policy of rendering the utmost in service to its customers.



Don Forrest and Sam Burtman

Registration Board Meeting Report

The following are excerpts from the minutes of the meeting of the State Board of Registration for Architects, Professional Engineers and Land Surveyors on November 8, 1963.

A discussion was held regarding the discontinuance of the Part III, Mining, Aeronautical, and Agricultural Professional Engineering Examinations, and it was moved and seconded that the following colleges and universities be contacted and advised that the Board is considering discontinuing the registration of Aeronautical, Agricultural, and Mining Engineers, and that if there are any objections to this policy, they should be answered by letter to the Board, or be given an opportunity to send a representative to the next Board meeting:

University of Detroit
Michigan State University
University of Michigan

A discussion was held on the tentative dates for the examinations which previously had been held in June of each year. The tentative dates have been set for May 25-29 for 1964 examinations covering Architecture, Professional Engineering and Land Surveying.

A discussion was held on the preliminary report of Michigan Society of Professional Engineers on revision to Act 240, P.A. of 1937 (as amended). This preliminary report was submitted by Michigan Society of Professional Engineer's Revision Committee, but has not been formally approved by M.S.P.E. Copies were given to each Board member for his study and comments.

A meeting was held with Mr. Steve Brawner, a law student from the University of Michigan, who was assigned as a special project, to make a study of our Registration Board in order to make his recommendations which in turn, will be submitted to the State Legislature for consideration.

A discussion was held with Mr. Charles H. MacMahon regarding a letter he mailed to the State Board on May 22, 1963 in which the Michigan Society of Architects had offered to assist the State Board in the preparation and grading of the seven parts of the Architect Examination. After the discussion, it was the consensus of opinion that the State Board would avail themselves of any assistance that the Michigan Society of Architects can render to the Board in the future.

A discussion was held on a report submitted to this State Board by Mr. C. D. Bassett, Chairman of the M.S.P.E. Part III Policy Review Committee. After discussion, it was moved and seconded that the State Board endorse the final draft generally, but that they would recommend excluding the next to the last paragraph, which reads as follows:

"Subject to the Attorney General's opinion an applicant who has failed the Part III Examination twice shall be required by the Board to wait 3 years before the applicant will be permitted to take the examination again, in order for him to acquire experience acceptable to the Board."

Motion made and passed that the Executive Secretary would write to the technical societies who have been assisting the State Board in the preparation of questions and the grading of Blue Books to determine if they wanted to continue to prepare questions and grade the Blue Books, and if they do, that the Blue Books would have to be graded and returned to the State Board by September 1st.

OBITUARIES

Mrs. C. William Palmer

Nina E. Palmer, wife of C. William Palmer, FAIA, died at her home, 1039 Seminole, Detroit, on December 27th. A former nurse's aide, Mrs. Palmer was decorated several times during World War I for her services.

She had been a resident of Detroit for more than thirty years and had been active in work of the Women's Association for the Detroit Symphony, Starr Commonwealth Auxiliary, Franklin Settlement House and the Indian Village Garden Club. She was an active member of the Women's Architectural League of Detroit.

William J. Rettenmier

Services for Mr. Rettenmier, of 15803 Archdale, Detroit, were held Saturday, February 15th in Royal Oak with burial in White Chapel Cemetery. Mr. Rettenmier, who was 69, died February 12th.

Executive Secretary of the Sheet Metal Contractors Association of Detroit, Mr. Rettenmier was formerly president of the Spitzley-Rettenmier Co. He was a member of the Harmonie Club, past master of Schiller Lodge No. 263, F. & A. M., a member of the Vortex Club and the Engineering Society of Detroit.

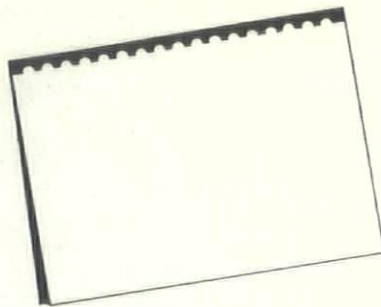
He is survived by his wife, Gladys; two daughters, Mrs. Robert Brown and Miss Ruth Rettenmier; a brother, Alfred N.; a sister, Mrs. Sara Dugall and one grandchild.

C. H. Carlisle Wilson

C. H. Carlisle Wilson, AIA, of 211 Biddle Street, Wyandotte, died January 13th after a long illness. Mr. Wilson was 83 years old at the time of his death.

Born in Newport, Kentucky, he received his early schooling there. He graduated from Cincinnati University in 1900. His early experience was gained in Newport with the Sanborn Map Co. as a draftsman. Later he travelled extensively throughout the United States making surveys. He established his practice as an architect in Wyandotte in 1913. He was registered in Michigan and held an NCARB Certificate.

Mr. Wilson became a Corporate member of the A.I.A. the Detroit Chapter and M.S.A. in 1944, was made an Emeritus member in 1962.



CALL US FOR SPECIFICATION INFORMATION & DETAILS

We have many illustrated brochures demonstrating interesting applications of the products we distribute which you may wish to add to your reference file. They include authentic colonial woodwork, interior doors of all types, decorator Marlite and Masonite paneling and Andersen windows.

Bring your clients to our showroom at any time.



KIMBALL & RUSSELL INC.
WHOLESALE SASH AND DOOR DISTRIBUTORS
2127 FENKELL AVE. DETROIT 38, MICH. U.N. 1-3480

K & R will work directly with you in providing all the information you require for writing specifications on products they distribute.



ROOFING AND
SHEET METAL
WORK
INDUSTRIAL AND
RESIDENTIAL
NEW ROOFS—
ASPHALT
SHINGLES
COMPLETE
ROOFING AND
SHEET METAL
REPAIRS.

85 YEARS
Continuous Service

On Top Since '79
J. D. Candler
ROOFING COMPANY, INC.
551 E. VERNOR HWY. • DETROIT
D. W. CANDLER •

Architects-Planners Needed For Peace Corps Assignments

The Government of Tunisia has requested that the Peace Corps send 40 architects and city planners to assist in Tunisia's high priority housing program. Volunteers for the project will enter training in June. The American Institute of Architects will administer the program and provide "on the spot" technical advice and support. The A.I.A. also will assist the Volunteers in obtaining professional credit for their work.

The Chief Engineer of the Housing Section has stressed that in no case will an architect or city planner be assigned to a job for which he is not properly prepared. There is such a demand for a wide range of skills that useful employment is assured. Training for Peace Corps Volunteers includes a technical refresher and courses in the language and culture of Tunisia.

Peace Corps Volunteers receive an adequate cash allowance for food, clothing, housing, medical care and pocket expenses. They also accumulate \$75 a month which is payable on completion of service. Two years' service brings this amount to \$1800.

Applications should be submitted no later than April 1. They can be obtained by writing: Architects, Division of Recruiting, Peace Corps, Washington, D.C. 20525, or from your Post Office or the Peace Corps Liaison Office on college campuses.

Detroit Code Amended— Insulated Duct Work

Prompted by recent shaft fires in high-rise buildings in other cities, Detroit's Department of Buildings and Safety Engineering drafted an addition to the Building Code. This amendment, as passed by the Common Council, is printed in toto below for information of all architects and engineers.

ORDINANCE NO. 837-F
CHAPTER NO. 449
(Make notation on page 1294)
BUILDING CODE AMENDMENT
NO. 33
COVERINGS FOR INSULATED
DUCT WORK

AN ORDINANCE to amend Ordinance NO. 121-F, officially identified as Chapter 449 of the Compiled Ordinances of the City of Detroit for 1954, as amended (The Official Building Code of the City of Detroit) by adding two sub-sections to Section 930.0 to be known as 930.1 and 930.2.

IT IS HEREBY ORDAINED BY
THE PEOPLE OF THE CITY OF
DETROIT:

Section 1. That Ordinance No. 121-F, officially identified as Chapter 449 of the Compiled Ordinances of 1954, as amended (The Official Building Code of the City of Detroit) be and the same is hereby amended by adding two sub-sections to Section 930.0 to be known as 930.1 and 930.2 to read as follows:

930.1 All air or heating ducts or

flexible duct connectors shall be constructed of noncombustible materials except as permitted in National Fire Protection Association Standards No. 90A-63—"Installation of Air Conditioning and Ventilating Systems" and 90B-63—"Installation of Residence Type Warm Air Heating and Air Conditioning Systems."

All interior lining for air or heating supply ducts shall be of non-combustible material.

930.2. When ducts for air or heating purposes are placed within a shaft which extends through four (4) or more floors with other ducts or piping and wherein noncombustible insulation is used which has combustible covering or wrapping, such covering or wrapping shall be protected by an approved fire retardant paint or other approved material to reduce the flame-spread rating of the combustible covering or wrapping to twenty-five (25) or less when tested under ASTM E84-61—"Test for Surface Burning Characteristics of Building Materials." (See Section 911 for venting of shafts).

Section 2. All ordinances or parts of ordinances in conflict herewith are hereby repealed only to the extent necessary to give this ordinance full force and effect.

(J.C.C.p. 3067-68, December 17,
Passed January 21, 1964
Approved January 28, 1964
Published January 29, 30, 31, 1964
Effective February 27, 1964

WAL-LOK NOW IN 3 GRADES!

STANDARD

No. 9 ga. Siderods,
No. 10 ga. GALVANIZED Crossrods

SUPERSTANDARD

No. 8 ga. Siderods,
No. 10 ga. GALVANIZED Crossrods

EXTRA HEAVY

3/16" Siderods,
No. 9 ga. GALVANIZED Crossrods

No other reinforcing has all these features—
found on all three grades of WAL-LOK—WAL-LOK is double deformed for maximum bond • The tensile strength of WAL-LOK is retained after welding • WAL-LOK has rectangular design for stronger welds and more steel in the mortar • WAL-LOK Crossrods project for 4 extra strong mortar locks at each weld • Crossrods hold WAL-LOK up off the blocks for complete embedment in the mortar. Write for free brochure today.



P. O. BOX 516

LENAWEE
PEERLESS,
INC.

ADRIAN, MICHIGAN

CALENDAR

March

- 3 Mid-Michigan Chapter—Tarpoff's—12:00 M—"Structure in Architecture," Prof. Willard Oberdick, AIA.
- 11 Northern Michigan Chapter—Shield's Restaurant, Traverse City—Film, "The Japanese Carpenter."
- 16 Saginaw Valley Chapter—Rodeitcher Hotel, Freeland—New A.I.S.C. Handbook, Charles Lee.
- 18 M.S.A. Board—Sheraton Cadillac Hotel, Detroit—12:00 M.
- 18 thru 20—M.S.A. 50th Annual Convention—Sheraton Cadillac Hotel, Detroit
- 20 Building Industry Jubilee Banquet—Ballroom, Cobo Hall—7:30 PM.
- 21 Michigan Structural Conference—"Structures of the 60's"—McGregor Memorial, W.S.U.—9:00 AM to 5:00 PM.
- 23 Grand Valley Chapter—American Legion Country Club, Holland—"Ecclesiastical Architecture," Dr. Donald J. Bruggink.
- 24 NAAMM Seminars on "Sealants" and "Metal Finishes"—Statler Hilton, Detroit—9:00 AM.

April

- 2 Mid-Michigan Chapter—Tarpoff's—12:00 M—"Illumination in Color," Ralph Pike.
- 13 thru 15—ASTM Committee on Acoustical Materials—ASTM Headquarters, Philadelphia, Penna.
- 18 Northern Michigan Chapter—Shield's Restaurant—Program Pending.
- 20 Grand Valley Chapter—University Club, Grand Rapids—"Building Financing," Harold Hartger.

May

- 26 thru 29—State Board of Registration Exams for Architects.

June

- 14 thru 18—A.I.A. National Convention—Chase Plaza Hotel—St. Louis, Missouri.

August

- 6 thru 8—M.S.A. Mid-Summer Conference—Grand Hotel—Mackinac Island.

CLASSIFIED

Call ALLEN STROSS, Your Photographer. 24 hour service. 962-5010.
68 West Ferry, Detroit 2.

MECHANICAL ENGINEERS

Job captain calibre with experience in design of mechanical utility systems and the design of mechanical trades for commercial, industrial and institutional buildings. Excellent opportunity for qualified men to grow with a progressive organization.

LEVIN, PIERCE & WOLF
Consulting Engineers
19480 Livernois
Detroit, Michigan
Phone 862-4045

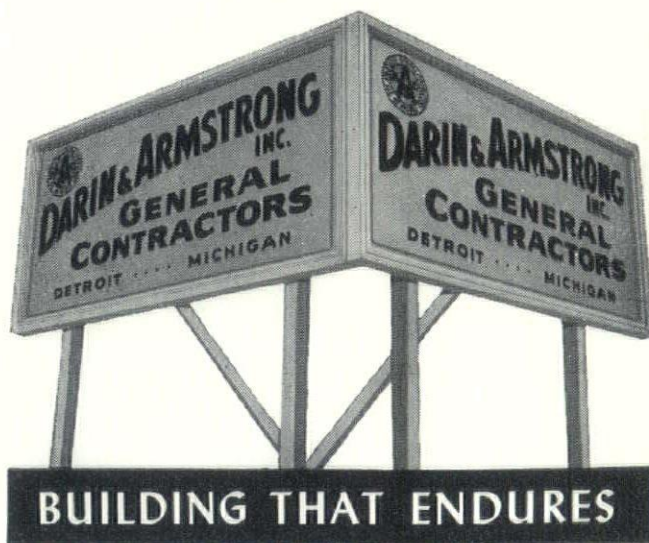
Michigan Society of Architects Board of Directors Meetings—1964

The schedule of meetings of the MSA Board for the balance of the year has been set as follows:

DATE	LOCATION
March 18 (Wednesday)	Detroit—M.S.A. Convention
April 11 (Saturday)	Lansing—Committee Workshop
May 22 (Friday)	Traverse City— with N. Michigan Chapter
June 27 (Saturday)	Lansing—Committee Workshop
August 6 (Thursday)	Mackinac Island— Mid Summer Conference
September 21 (Monday)	Flint—with Flint Area Chapter
October 17 (Saturday)	Lansing—Committee Workshop
November 16 (Monday)	Grand Rapids— with Grand Valley Chapter
December 7 (Monday)	Organization Meeting— with Saginaw Valley Chapter

ADVERTISERS' INDEX

Aerofin Corp.	35
Anderson, E. J. Co.	6
Ann Arbor Press	26
Bauer-Foster Floors	32
Belden Brick Company	9
Boice Builders Supply	30
Boosey, Norman Company	36
Candler, J. D. Roofing Company	40
Century Brick Company	4
Cinder Block, Inc.	38
Consumers Power Company	3rd Cover
Couse, Walter L.	6
Darin and Armstrong, Inc.	42
Den Braven, M.	30
Detroit Brick and Block Company	13
Detroit Edison Company	33
Detroit Partition Company	14
Dodge, F. W. Company	10
Dow Chemical Company	14
Fenestra, Inc.	2nd Cover
Freeman-Darling, Inc.	14
Freeman, John H. Company	30
Glanz and Killian	34
Great Lakes Fabricators and Erectors Assoc.	29
Green, John E., Co., Inc.	4
Harlan Electric Company	1
Heinemann Lovett Company, Inc.	14
Holmes Associates, Inc.	12
Kimball and Russell, Inc.	39
Levy, Edward C., Company	4th Cover
Lincoln-Mercury Div., Ford Motor Co.	18
Lorne Company, Inc.	36
Michigan Asphalt Paving Association	28
Michigan Consolidated Gas Company	5
Michigan Drilling Company	38
Moors, Wm. Concrete Products	2
Pioneer-Detroit, Inc.	8
Portland Cement Association	25
Producers Council (Michigan Chapter)	16 & 17
Rogers, Maurice V. Co.	28
Roofing Industry Promotion Fund	8
SMCAD	6
Sona Cement Products Company	30
Spitzley Corp.	4
Stephenson and Lawyer, Inc.	36
Stevens, Frederic B. Company	31
Structural Clay Products Institute	37
The Supersine Company	8
Turner Brooks, Inc.	38
Turner Engineering Co.	8
U. S. Steel Corp.	41
Wal-Lok Division, Lenawee Peerless	40
Wesco, Inc.	38
Young, George E., Nursery, Inc.	30
Zebrowski and Associates	30





Proven most fire-resistant...made with expanded slag aggregate

Slag is melted in blast furnaces at 700°F. At this temperature, all volatile and combustible materials are burned off. That's why concrete made with USS GARYLITE expanded slag aggregate is so fire-resistant.

In actual fire tests made by the Portland Cement Association, expanded slag gave 23 to 117% more fire resistance to 8-inch walls and 1 to 78% more fire resistance to 4-inch walls than any of ten other aggregates tested. Expanded slag meets the National Board of Fire

Underwriters' four-hour fire-resistance test, with 21 to 42% less wall thickness than eight other aggregates tested. The National Bureau of Standards reports a minimum increase of one hour for all walls made with expanded slag, regardless of wall thickness.

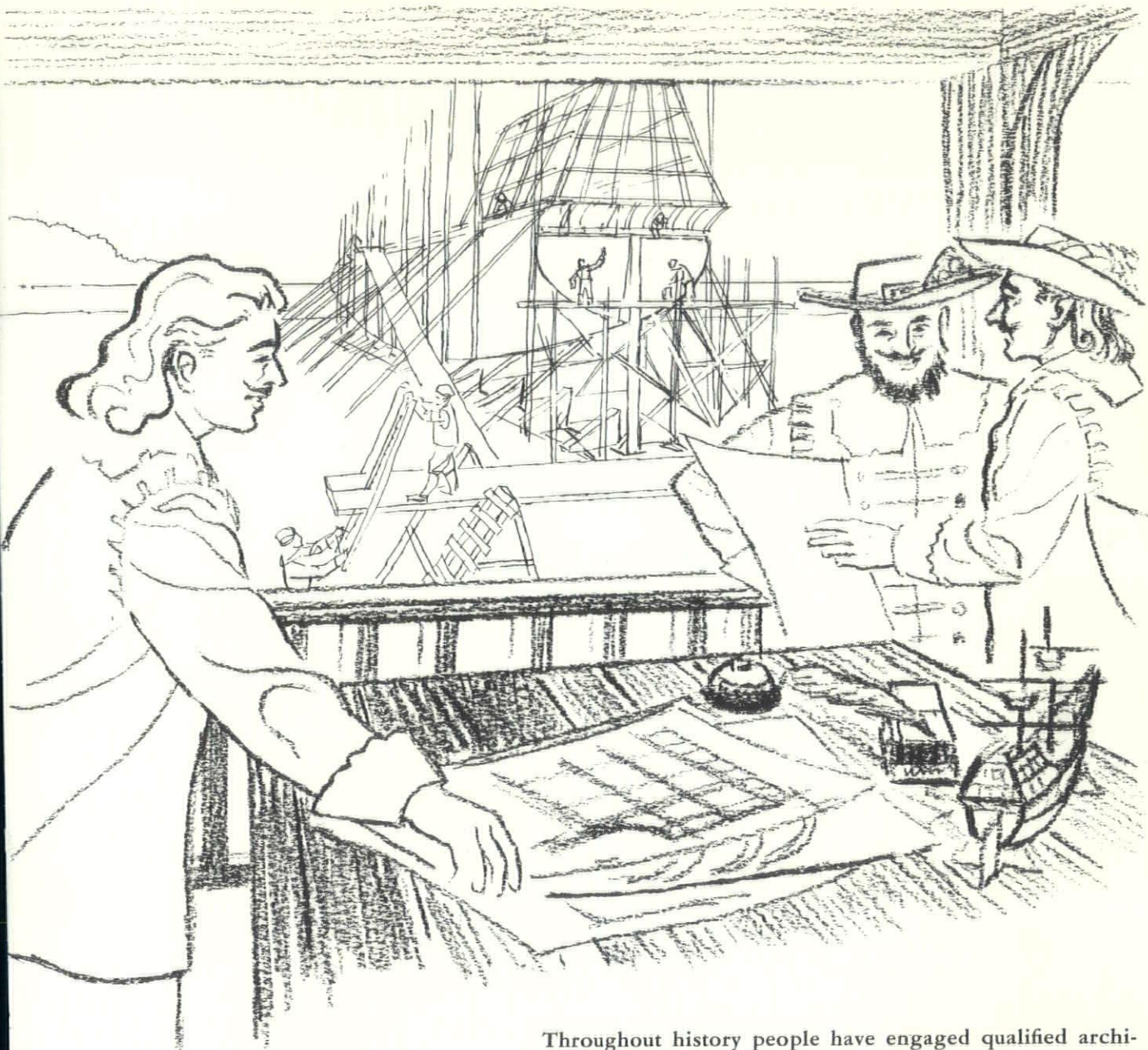
In addition to its outstanding resistance to fire, USS GARYLITE expanded slag aggregate is light in weight (some aggregates weigh over 50% more), durable (wetting, drying, and freezing have little or no effect), economical (it costs less

to transport, handle, and erect blocks made with GARYLITE), and available in a variety of sizes for every lightweight concrete need.

Next time you need lightweight concrete, check into the advantages of specifying USS GARYLITE expanded slag as the aggregate. For more information and a copy of our free booklet, write United States Steel, Slag Products Section, Room 6749, 208 South LaSalle Street, Chicago 90, Illinois. Area Code 312-236-9200. USS and GARYLITE are trademarks.

United States Steel





Cooperation In Planning

FOR BETTER SERVICE

Throughout history people have engaged qualified architects for the successful fulfillment of their building needs.

Today, the architects' work has increased greatly because of technological advances in the building arts and time is an important factor too, because of ever-tightening schedules.

Consumers Power Company can provide information about gas and electric services that will save time and effort for the architect or consulting engineer. As a combination utility we know the characteristics, requirements and adaptability of both types of energy.

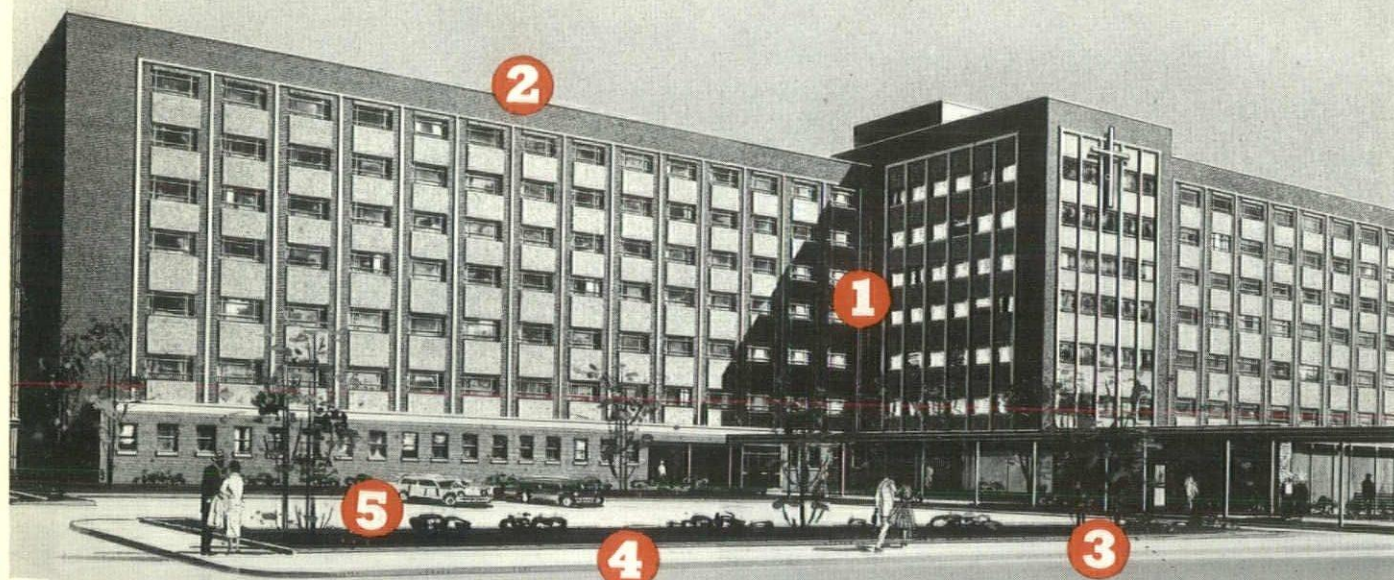
Our special representatives throughout our service area will be pleased to be of assistance.

Call or write George C. Way, Consumers Power Company General Offices, 212 W. Michigan Avenue, Jackson, Michigan . . . Phone area 517-788-0809.

CONSUMERS POWER COMPANY

Electric and Natural Gas Service in Outstate Michigan

Providence provides...



NEW PROVIDENCE HOSPITAL USES SLAG AGGREGATE 5 WAYS

- 1** IN STRUCTURAL
CONCRETE
(for foundations,
walls, etc.)
- 2** IN ROOFING (surfacing
for built-up roof)
- 3** IN CONCRETE PAVING
(walks, driveways, etc.)
- 4** AS AGGREGATE BASE
(under concrete paving)
- 5** IN BITUMINOUS
CONCRETE
(for parking areas)

NEW PROVIDENCE HOSPITAL
Operated by The Daughters of Charity of St. Vincent De Paul
Architects and Engineers: Giffels and Rossetti
Contractor: Darin and Armstrong, General Contractors
Roofing: Duane Smelser Roofing Co.
Paving: Ajax Asphalt Paving Co.

PROVIDENCE HOSPITAL CONTRACTORS CHOOSE SLAG AGGREGATE FOR STRENGTH, DURABILITY, FIRE RESISTANCE...SO ESSENTIAL TO SAFETY

BLAST FURNACE SLAG—the world's toughest aggregate—is *born in fire* at 2500 degrees. Slag concrete has no equal for fire proofing encased girders and beams. But SLAG CONCRETE offers many other advantages besides higher U. L. fire ratings. It is the world's *strongest* concrete. It is *time-tested* on highways and expressways, skyscrapers, industrial plants—wherever rugged durability is a factor. It offers *economy* . . . weighs about 10 pounds less per cubic foot than stone or gravel concrete. Specify BLAST FURNACE SLAG for all *your* construction needs.

PHONE
VI 3-7200

EDW. C. LEVY COMPANY

PIONEERS IN QUALITY AGGREGATES
8800 DIX AVENUE • DETROIT, MICHIGAN 48209

MATTER AT
DETROIT, MICH.