

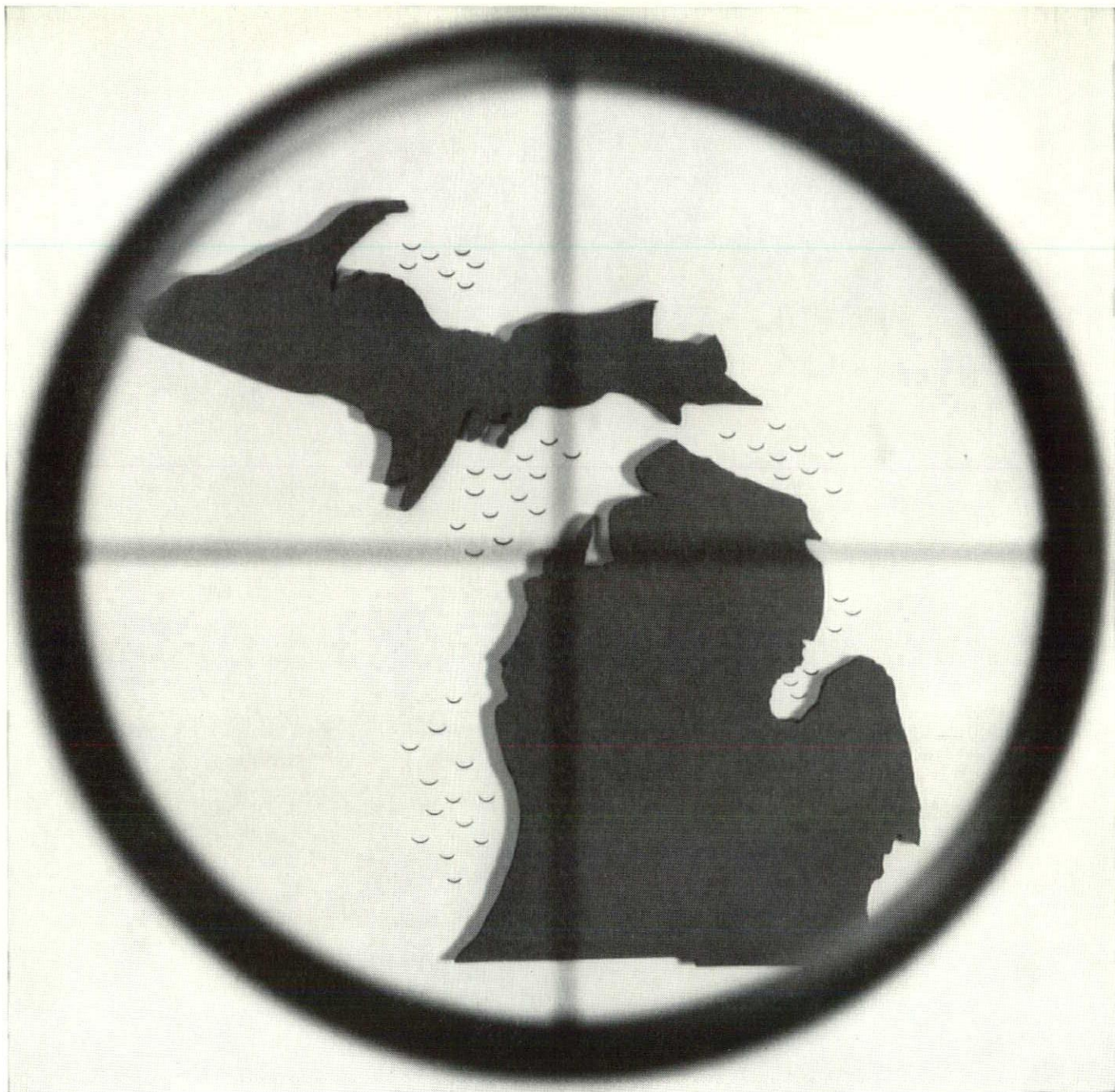
# BULLETIN

*monthly*

LIBRARY  
MAY 15 1963  
AMERICAN INSTITUTE

michigan society of architects may 1963 50¢





## YOUR SITES SET IN MICHIGAN?

[ *we'll help with your specs* ]

In Michigan, you'll find Gas unlimited . . . one of the nation's largest supplies of the fuel that's fast, economical, easy to control . . . and never fails. If you are building here, you'll get all the Gas you need for everything from heating to air conditioning . . . for present use and in the future. Our Michigan Consolidated Gas Company repre-

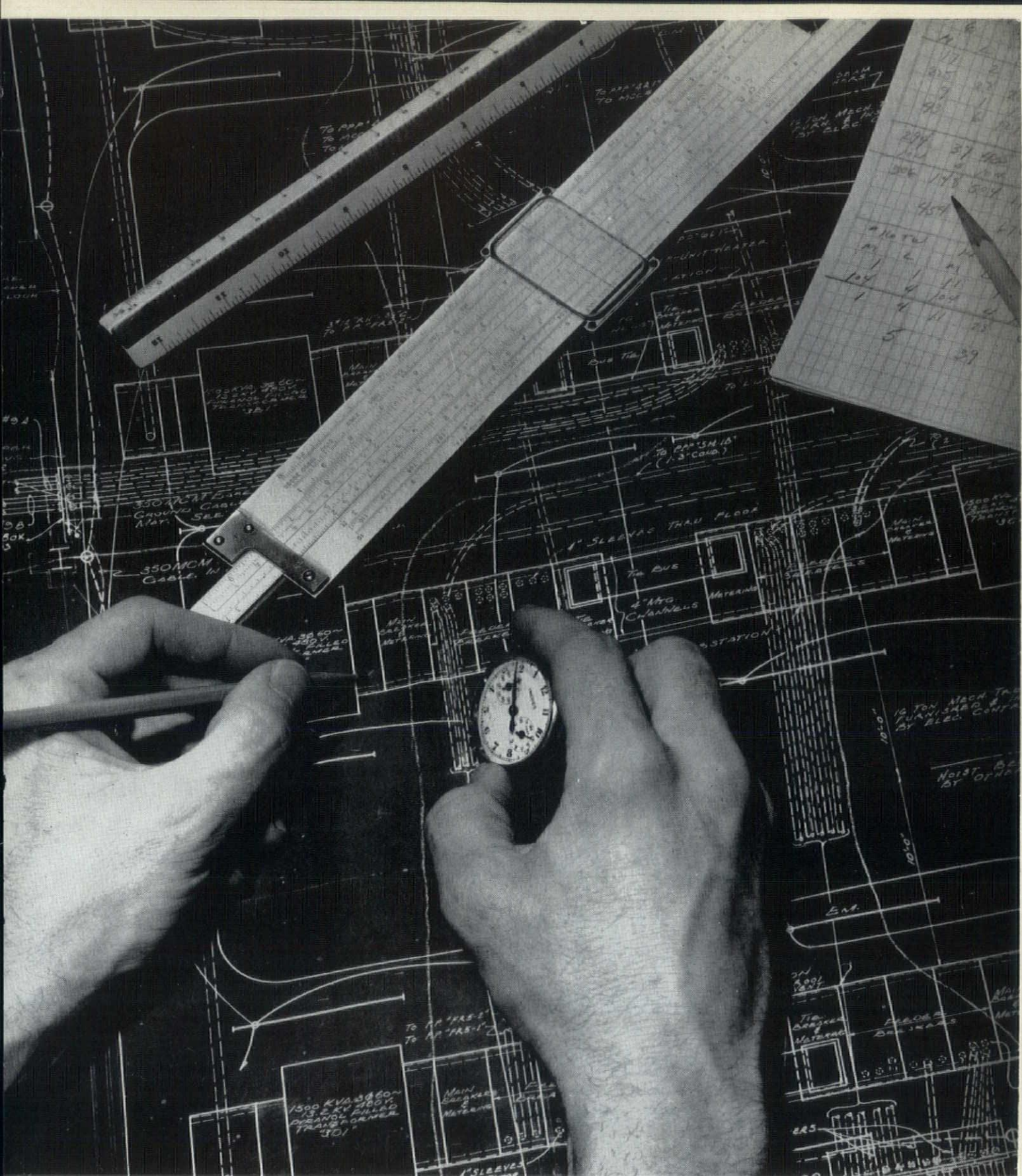
sentative will be glad to work with you and help you on your specifications. Plan now to save with Gas! For details, write or phone our New Business Division at One Woodward Ave., Detroit 26, Michigan—Phone 965-8000.

**MICHIGAN CONSOLIDATED GAS COMPANY**



Monthly Bulletin, Michigan Society of Architects, is published monthly at 28 West Adams, Detroit 26, Michigan. Entered as second-class matter January 15, 1946 at the Post Office at Detroit, Michigan under Act of March 3, 1879. Subscription price, \$4.00 per year (members \$2.00). 50 cents per copy.





icted here are some of the tools and skills which make finished product possible. The thing that we can never ray, which is still our best asset, is the very spirit the heart of the organization.

## HARLAN ELECTRIC CO.

6440 JOHN C. LODGE EXPRESSWAY  
DETROIT 2, MICHIGAN  
TRINITY 3-5600





**No INTERIOR FURNISHING** problem  
is too big or too small for  
**HUDSON'S**  
**CONTRACT DIVISION**

We specialize in big jobs like the one we've just completed for the magnificent new Michigan Consolidated Gas Company building—but if your problem concerns furnishing a one-desk office, we'll take it on with equal interest and enthusiasm. Ask us about furniture, floor coverings, draperies and accessories. We'll select—or aid you in selecting—all or any of your requirements. Call on us.

- Offices • Reception Rooms • Hotels and Motels
- Institutions • Funeral Homes • Churches

**HUDSON'S**

Downtown, 11th; Northland, 1st  
CApitol 3-5100, Ext. 2356



# BULLETIN

*monthly*

*michigan society of architects may 1963*

THE MONTHLY BULLETIN  
IS PUBLISHED FOR THE  
MICHIGAN SOCIETY OF  
ARCHITECTS TO ADVANCE  
THE PROFESSION OF  
ARCHITECTURE IN THE  
STATE OF MICHIGAN.

EDITOR—

James B. Hughes, AIA

ASSISTANT EDITOR—

Ann Stacy

EDITORIAL CONSULTANT—

Nancy Houston

ART DIRECTOR—

Edward Hutcheson

GRAPHIC ARTS

CONSULTANT—

Gary R. Grout

Ann Arbor Press

ADVERTISING

REPRESENTATIVE—

Charles O. Irvine

CHAPTER ASSOCIATE

EDITORS

Detroit . . .

Wallace Clelland, AIA

Flint Area . . .

J. Lauran Kretchmar, AIA

Grand Valley . . .

Jay H. Volkers, AIA

Mid-Michigan . . .

Nobyn H. D'Haene, AIA

Saginaw Valley . . .

R. W. Hammerschmidt, AIA

Western Michigan . . .

Donald W. Stearns, AIA

MSA BOARD LIAISON . . .

Richard C. Frank, AIA

ADVISORY EDITORS

DESIGN . . .

Walter B. Sanders, AIA

EDUCATION . . .

Robert F. Hastings, FAIA

## Volume 38—No. 4

- 9 Michigan Week
- 13 Michigan Consolidated Gas Company
- 27 News
- 31 Theater Exhibit at Detroit Art Institute
- 34 Advertisers' Index

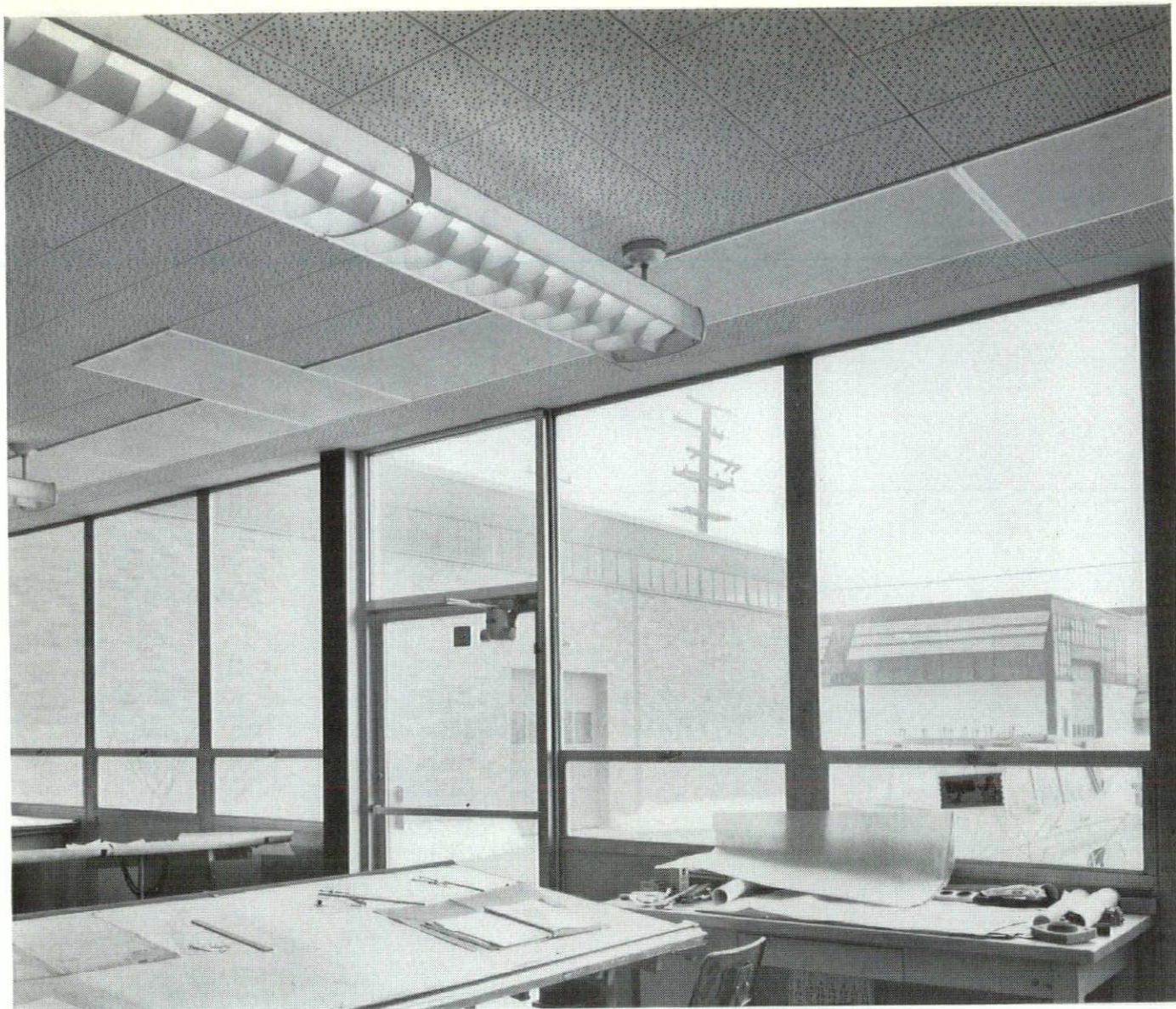
## MSA MID-SUMMER CONFERENCE GRAND HOTEL—MACKINAC ISLAND

August 1 - 2 - 3

PLAN NOW TO ATTEND

*Monthly Bulletin, Michigan Society of Architects, the official publication of the Society; all Michigan Chapters of the American Institute of Architects; Women's Architectural League of Detroit (WALD); Producers Council, Inc., Michigan Chapter; Builders & Traders Exchanges of Detroit, Grand Rapids and Lansing is published monthly by the Michigan Architectural Foundation; Editorial and Advertising Offices—28 West Adams, Detroit 26, Michigan, Phone: 965-4100.*





## **ROBIN PRODUCTS COMPANY SOLVES COLD OFFICE PROBLEM WITH RADIANT HEAT CEILING PANELS**

Robin Products Company, of Warren, Michigan, had a heating problem in their new glass-walled engineering room. Employees working near the windows were subjected to constant cold drafts. How to add heat to the trouble area without overheating the rest of the office? They found the simple no-muss, no-fuss answer in radiant electric heat ceiling panels, installed above the windows.

Electric heat makes it easy to add warmth anywhere you want it. Ideal for areas or structures remote or completely separated from a central heating system—along glass window-walls—in hazardous areas—even in open, drafty spaces.

Do you have a comfort heating problem you'd like to solve? Call WO. 2-2100, ext. 2223. Outside the metropolitan Detroit area, call your Edison office.

**DETROIT EDISON**



This is the **Open World** of L-O-F glass



Architects: Minoru Yamasaki & Associates. Glazing Contractor: Cadillac Glass Co., Detroit

## These windows put a hex on sun heat and glare

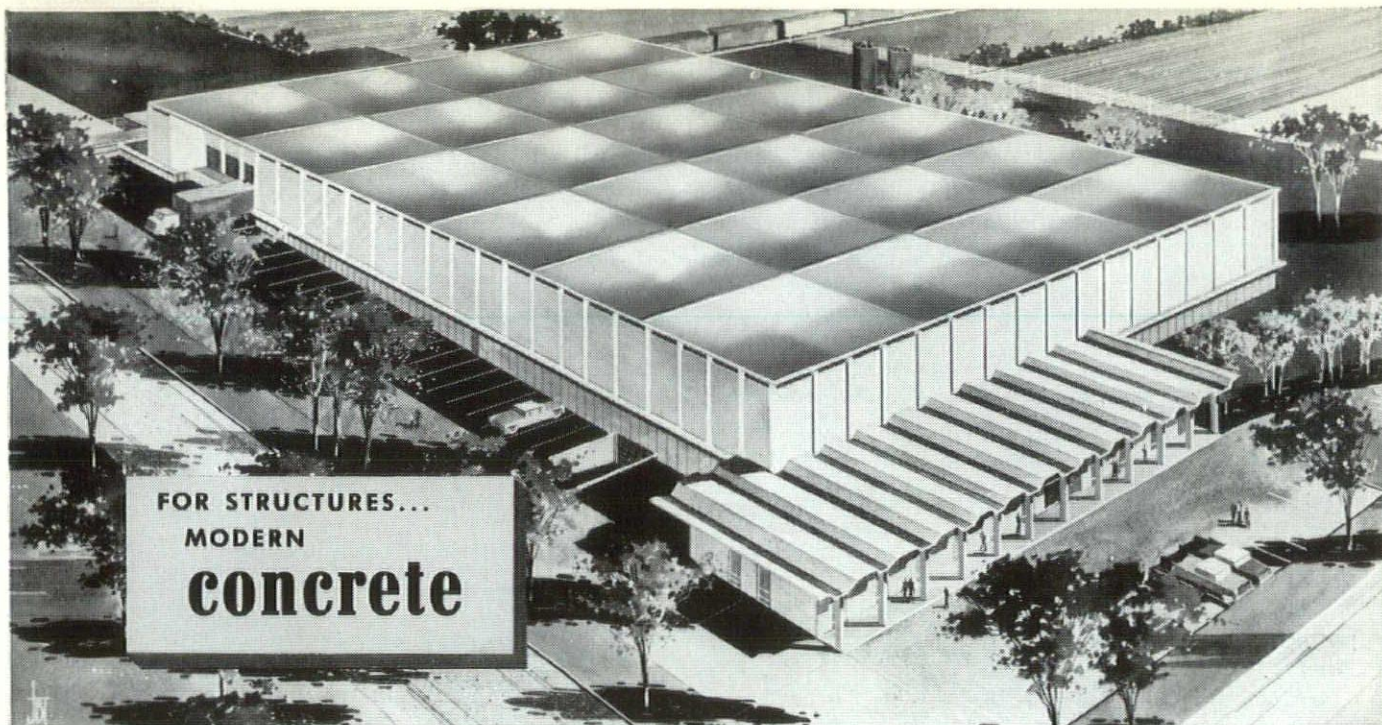
4,800 hexagonal windows in the new Michigan Consolidated Gas Building are glazed with  $\frac{1}{4}$ " *Parallel-O-Grey*® plate glass. This remarkable neutral grey glass excludes approximately 40% of the solar energy (heat). And it screens out approximately 56% of average daylight to reduce glare and brightness.

**Libbey • Owens • Ford**  
Toledo 2, Ohio

MADE IN U.S.A.

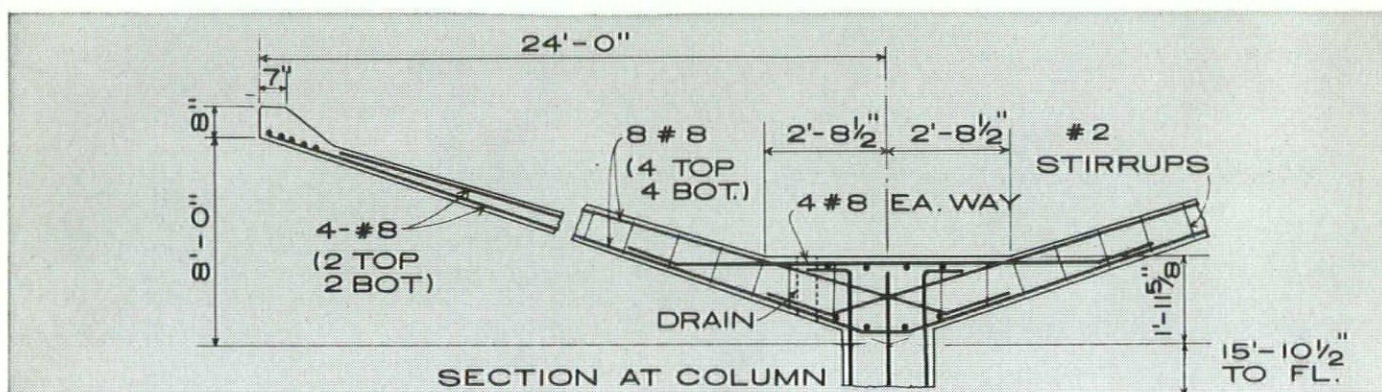






Skinner Manufacturing Co., Omaha, Nebraska. Engineer: Nance Engineering, Inc., Omaha. Architect: Steele, Sandham & Weinstein, Omaha. Contractor: Peter Kiewit Sons' Co., Omaha.

## **\$1.00 per sq. ft. roofs food plant with HP shells of modern concrete**



24 inverted concrete "umbrellas," each supported by a single column, form the roof of the new Skinner Macaroni Manufacturing plant in Omaha, Nebraska. At an estimated cost of \$1.00 per square foot, it was the economical answer to the special problems involved in designing a plant for making macaroni.

With flour dust everywhere, no dust collecting surfaces could be allowed. Only concrete could give the smooth, dense surface needed—and stand up to the high humidity that ruled out the use of plaster.

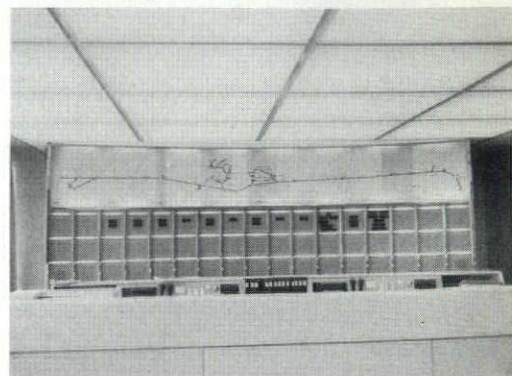
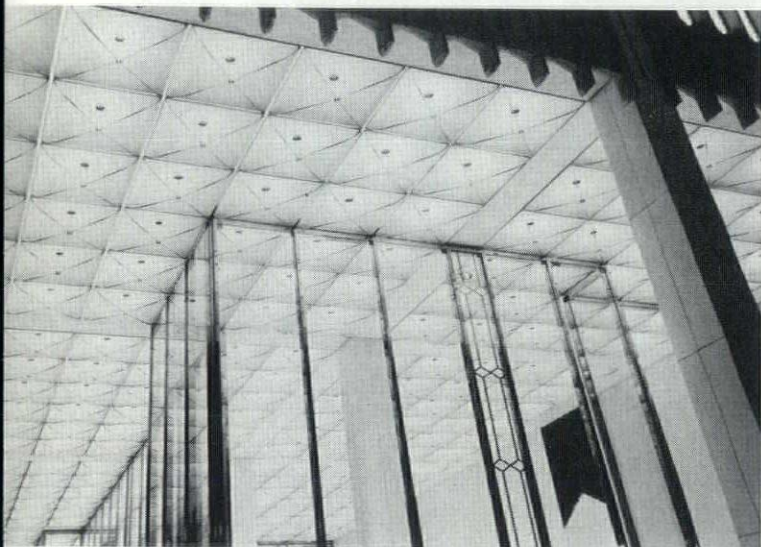
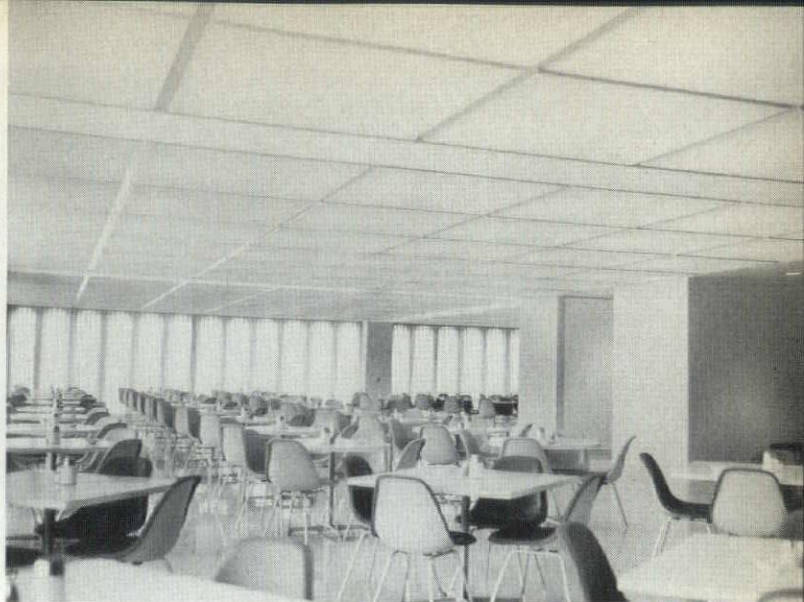
And the widely spaced columns of the hyperbolic shells permit efficient placing of machinery and processing lines. Although the nominal height is 16 feet, the curves of the shells give room for special processing equipment that requires greater clearance. All piping and wiring run in the high portions of the roof where they won't encroach on design clearance.

More and more, architects and engineers are finding that concrete is the one completely versatile building material for structures of every type and size.

**PORTLAND CEMENT ASSOCIATION**

Stoddard Building, Lansing 23, Michigan  
A national organization to improve and extend the uses of concrete





## GASLIGHT?

Yes, the illusion of Gaslight has been accomplished in Detroit's newest structure. Hall Engineering Company, in cooperation with the creative talents of Minoru Yamasaki, D. Lee Dusell and James McDonald (Smith, Hinchman and Grylls), has appropriately installed the realistic illusion of gas jets in the main lobby ceiling of

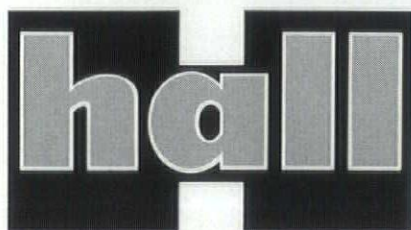
### THE MICHIGAN CONSOLIDATED GAS COMPANY BUILDING

with imaginative use of spotlights and blue "plastic jewels." This is the first of many impressions of "creative illumination" you receive as you move from floor to floor.

The absence of "shadows" throughout the building is due primarily to the special egg-crate design of the panels covering the three-lamp fluorescent lighting fixtures installed within the cavity of the modular concrete waffle that forms the ceilings.

Hall Engineering Company used over 300 miles of wire and 28 miles of fluorescent tubes to accomplish the need for soft, diffused lighting.

When your next project calls for an experienced electrical contractor with many years of service to Michigan architects write or phone:



**engineering co.**  
**ELECTRICAL CONTRACTORS**

888 West Baltimore

TR 1-8200

Detroit, Michigan



# Michigan Consolidated Gas Company

DETROIT, MICHIGAN

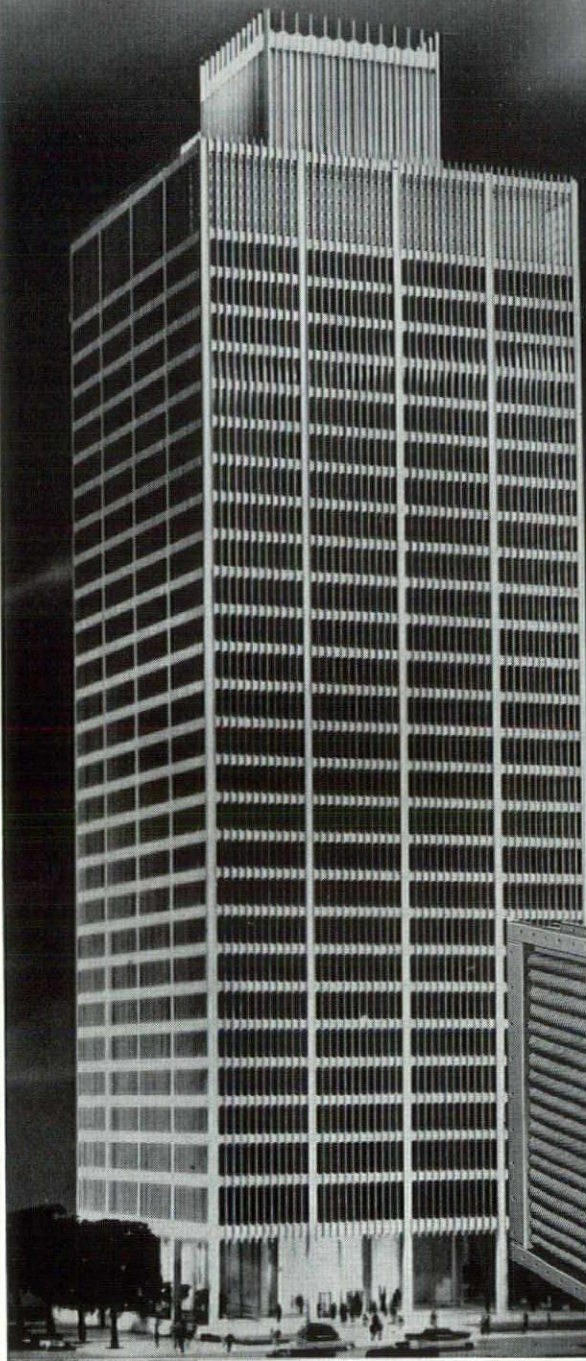
New Forms and Systems Achieve  
Striking Effect of Soaring Grace

## AEROFIN INSTALLED

to temper the air delivered to the unique new  
variable volume reheat window units.

Modern smooth-fin design of Aerofin coils permits ample heat-exchange capacity in limited space. Where desired, it also permits the use of high air velocities without turbulence or excessive resistance.

Aerofin performance data are laboratory and field proved. You can safely specify Aerofin coils at full published ratings.



Minoru Yamasaki—Smith, Hinchman & Grylls  
Associated Architects and Engineers  
Bryant & Detwiler Co.  
General Contractors  
Glanz & Killian Co. • J. Brodie & Sons  
Mechanical Contractors



Aerofin hot-water heating coils (illustrated) and chilled-water cooling coils contribute to the year-round comfort of this outstanding new building.

## AEROFIN CORPORATION

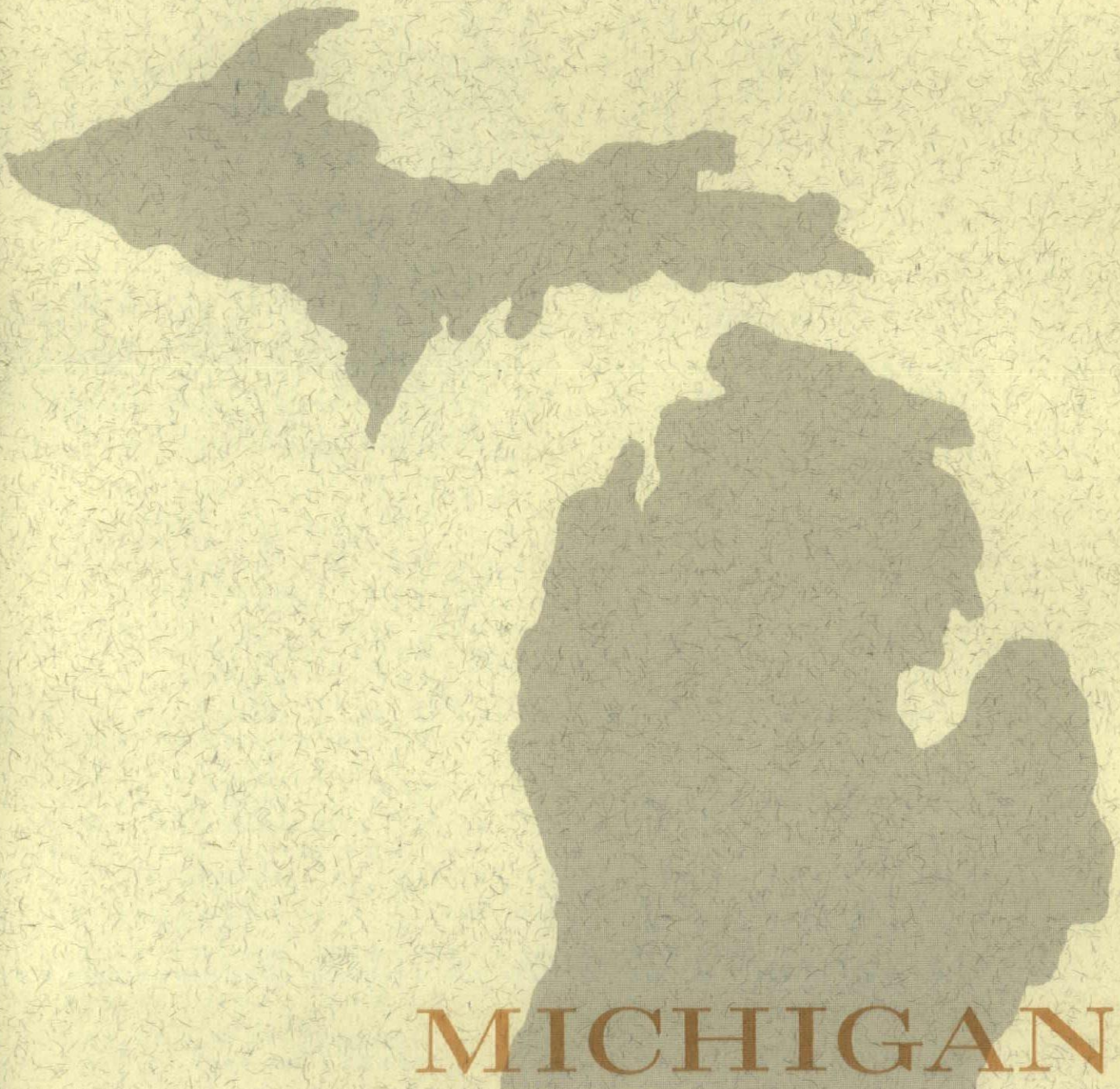
101 Greenway Ave., Syracuse 3, N. Y.

*Aerofin is sold only by manufacturers of fan system apparatus. List on request.*

ENGINEERING OFFICES IN PRINCIPAL CITIES



MAY 19-25



# MICHIGAN WEEK



## World-Wide Impact of Michigan Architects

*TWA Terminal Building  
Idlewild Airport  
New York*

*Eero Saarinen and Associates*



Not only do the architects of Michigan contribute by their designs to Michigan's growth . . . the nation and many foreign countries call upon their talents. The State Department Building, facilities for Project Apollo at Cape Canaveral, an airport terminal in Saudi Arabia, and structures throughout the world for industry, institutions and commerce are created and designed by Michigan architects and engineers.

Such states as California and New York may outnumber Michigan's members in the profession, but we can rightly claim a top position in the impact generated by the designs of close to 1000 members of the Michigan Society of Architects.

A few years ago, a feature writer of one of Detroit's newspapers referred to Detroit as the "Mecca of Design." Today, it is more appropriate to apply this expression to the entire state.

New buildings for all areas of endeavor are rising in Michigan, sparked by the growing advance in science and technology. Since 1950, for example, the University of Michigan has expended \$10 million in developing the North Campus. Lynn W. Fry, A.I.A., the university architect, has in the planning stage for development during the next 10 years additional research facilities totaling \$25 million, including medical units.

Michigan State University has now under construction science and research facilities totaling approximately \$20 million. Donald O. Ross, A.I.A., MSU's architect, announced that in conceptual phases are technological projects with a cumulative cost of more than \$35 million. Wayne State University will continue development of its research complex and proposes to expend \$15 million during the next five to seven years. This volume does not include their growing Medical Center. And the Michigan universities of Western, Central, Eastern, Northern, Ferris Institute and the Michigan College of Mining and Technology are also on the move. As announced by





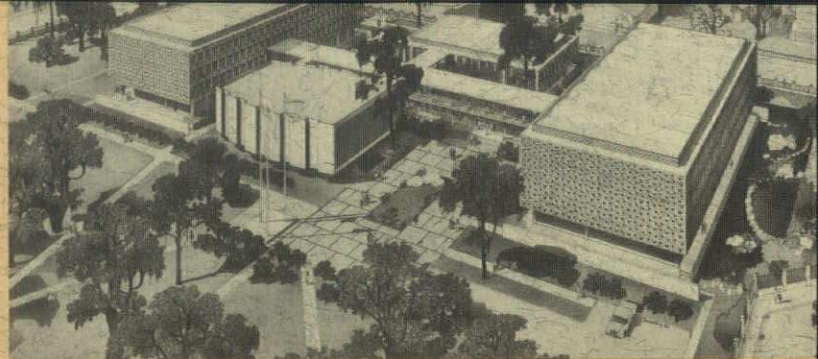
Adrian N. Langius, F.A.I.A., director of the Building Division of the Department of Administration for the State, their aggregate cost of construction for new facilities in the '60's will approximate \$15 million.

Industry and development groups are also surging ahead. Recently announced were the plans of two private groups which are putting into actuality research parks adjacent to the North Campus at Ann Arbor and to the MSU research center. At Ann Arbor, Federal-Mogul-Bower Bearings, Inc. earlier this year dedicated a most specialized laboratory.

In 1961, Eaton Manufacturing Company constructed a new research center in Southfield, Michigan, which serves their central engineering group and other divisions and affiliates throughout the United States and foreign countries. Kellogg, within recent weeks, occupied a new technical center at Battle Creek. Also significant to the theme of Michigan Week "Science and Research for Our Future" is the Gerber Products new research center now under construction at Fremont. What makes this project so meaningful to the State's future research growth is that the personnel who will guide Gerber's continued leadership in their market will be reassigned from California. We hope such corporate decisions set a trend.

Of further importance to the Week's theme for Michigan's future are the brilliant new institutions to be found in many areas of the State: Dearborn Center—University of Michigan; Delta College in the Bay area; Grand Valley College at Grand Rapids; and Oakland University. Curricula at these institutions cannot be divorced from the basic principles of research.

Then too are the, oftentimes, unannounced research activities conducted by companies in existing research centers. The General Motors Technical Center and Ford's Engineering complex are regarded as prototypes of such facilities. Many visitors to the State have them on the agenda as "must see" points of interest.



*Medical Center  
University of Saigon  
Saigon, Vietnam*

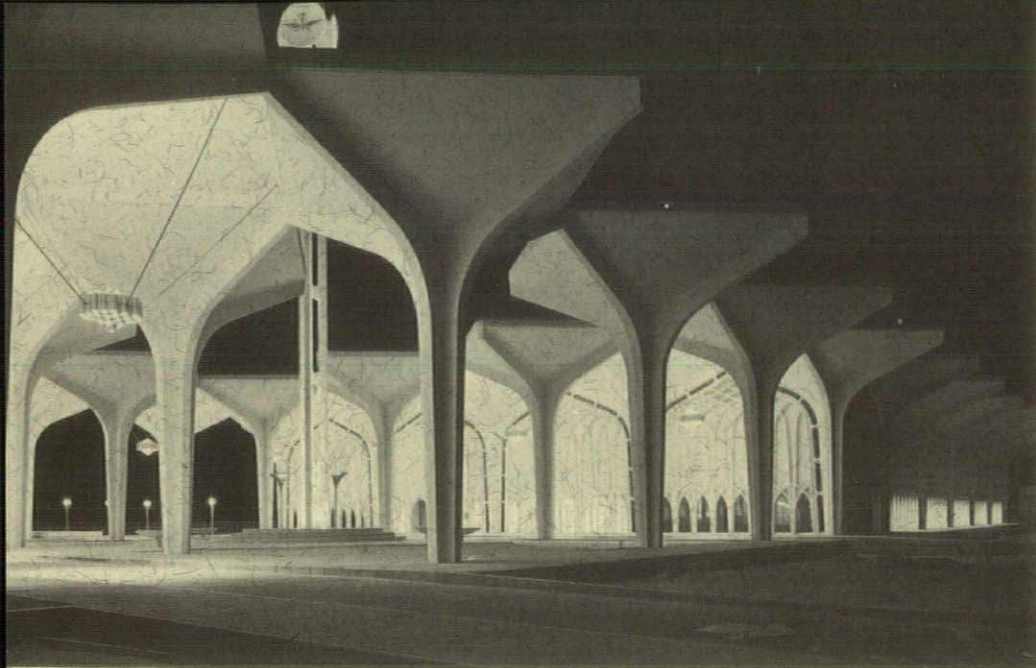
*Smith, Hinchman and Grylls Associates, Inc.*

*"Century 21" Exposition  
Seattle, Washington*

*Minoru Yamasaki and Associates*

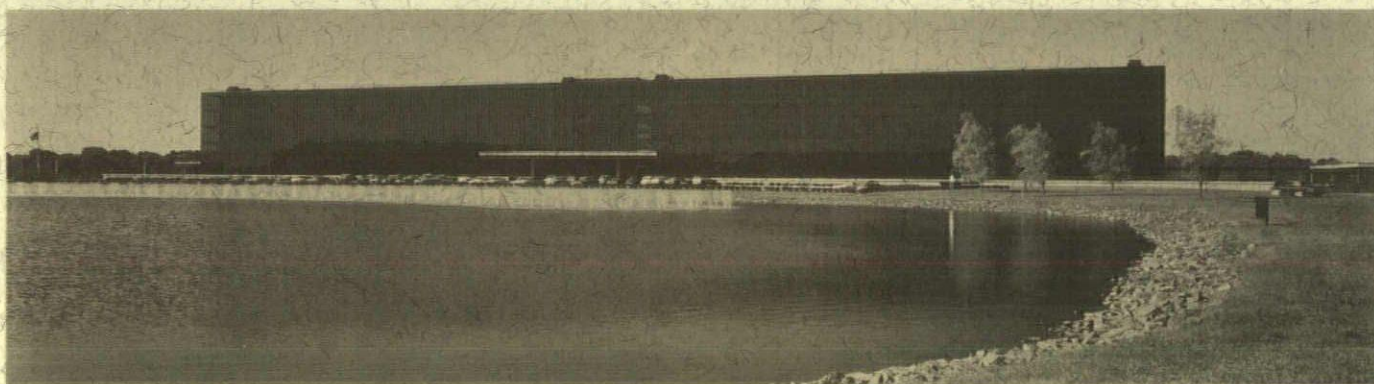






*Dhahran Air Terminal  
Dhahran, Saudi Arabia*

*Minoru Yamasaki and Associates*



*Bell Laboratories  
Holmdel, N.J.*

*Eero Saarinen and Associates*

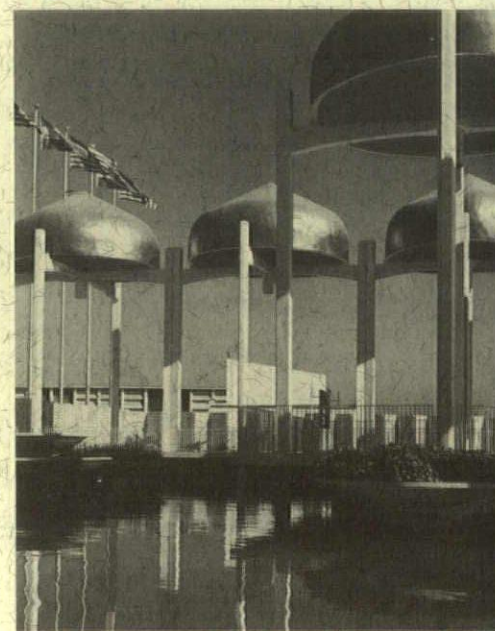
*United States Exhibition Pavilion  
World Agricultural Fair  
New Delhi, India*

*Minoru Yamasaki and Associates*



*Research Center  
Eaton Manufacturing Company  
Southfield, Michigan*

*Giffels & Rossetti, Inc.*

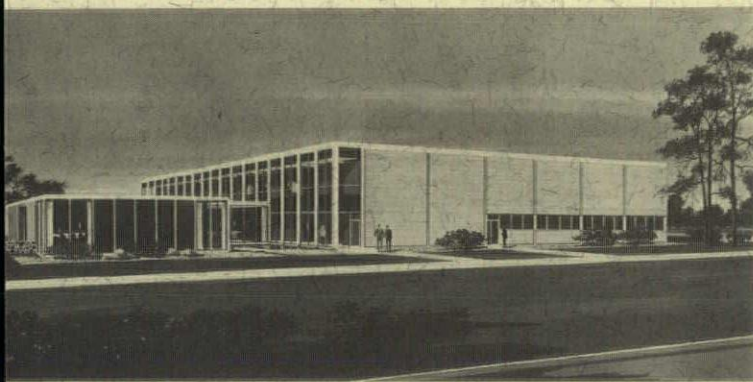






*Automotive Laboratory  
University of Michigan*

*Giffels & Rossetti, Inc.*



*Research Center  
Gerber Products Company  
Fremont, Michigan*

*Giffels & Rossetti, Inc.*



*Indianapolis—Marion  
City-County Building*

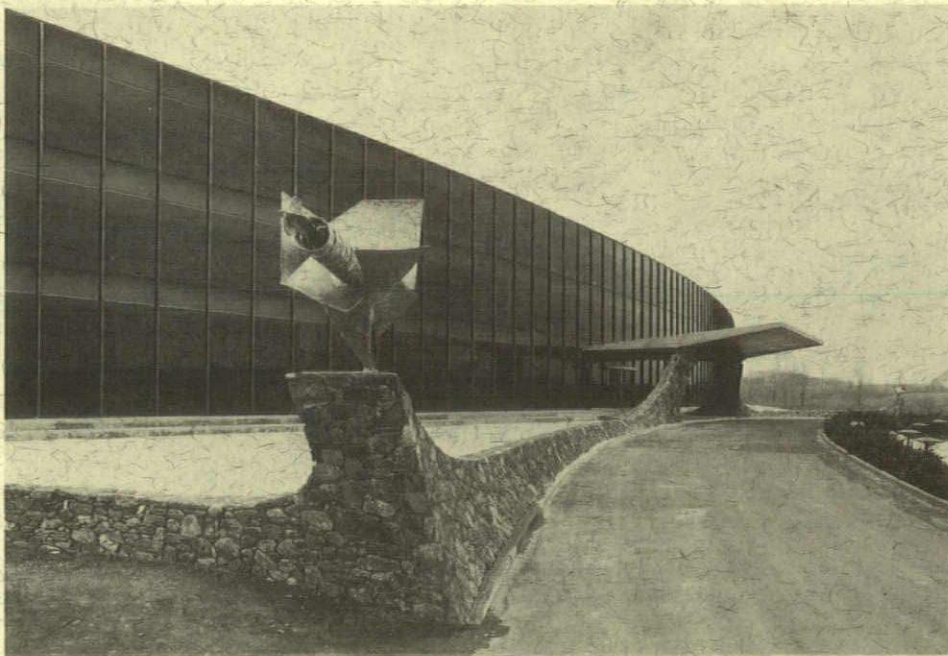
*Harley, Ellington, Cowin and Stirton, Inc.*



*State Department Building  
Washington, D. C.*

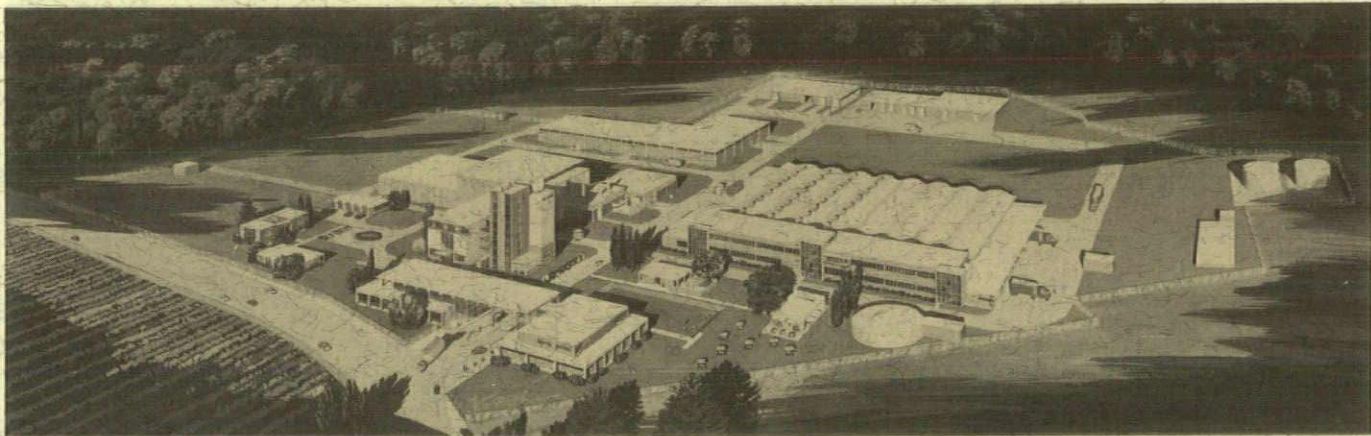
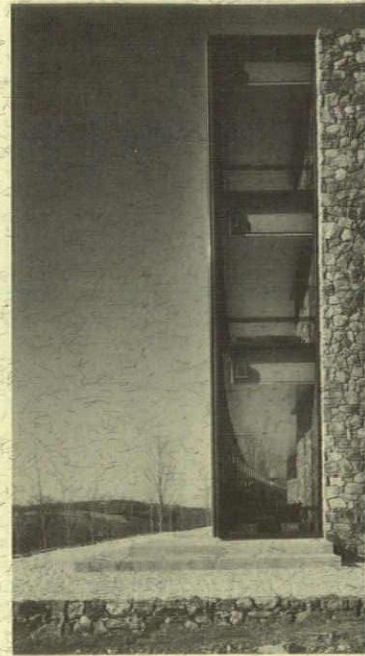
*Harley, Ellington, Cowin and Stirton, Inc.*





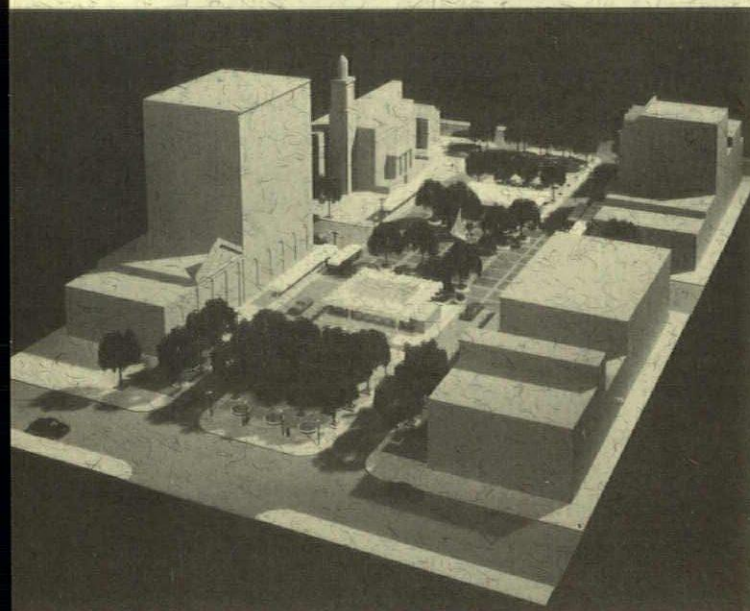
*IBM Research Laboratories  
Yorktown, New York*

*Eero Saarinen and Associates*



*Nuovo Stabilimento  
Birra Peron, Adriatica  
Bari, Italia*

*Harley, Ellington and Day, Inc.*



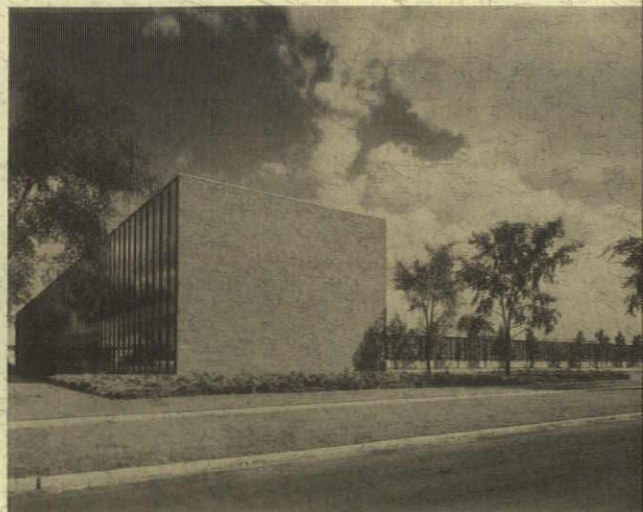
*Central Plaza Development  
Canton, Ohio*

*Tarapata-MacMahon Associates, Inc.*

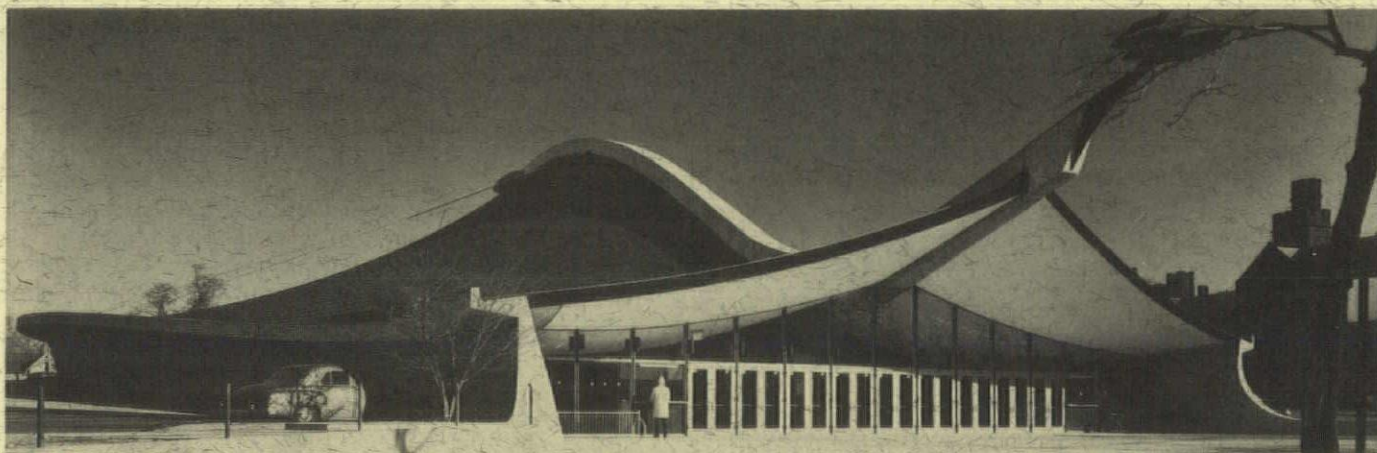




*General Motors Technical Center*



*Eero Saarinen and Associates—  
Smith, Hinchman and Grylls Associates, Inc.*

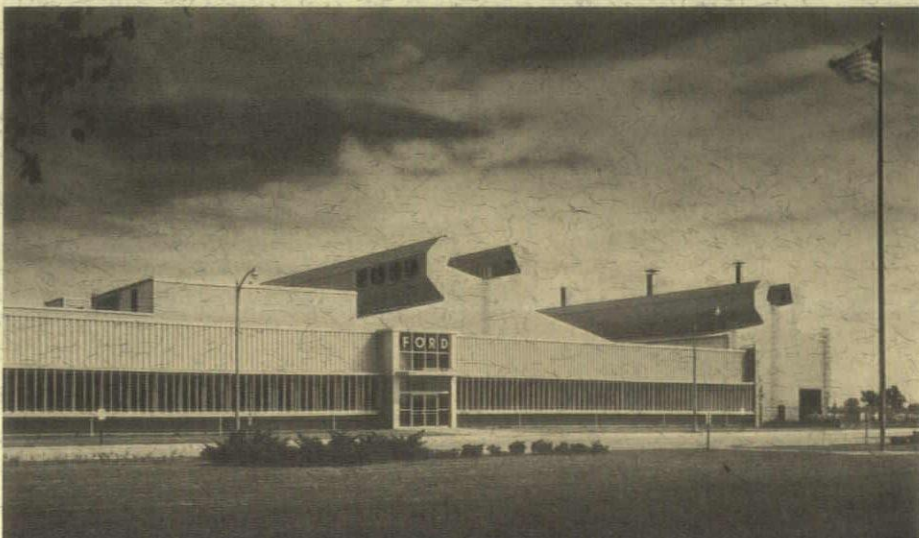


*David S. Ingalls Hockey Rink  
Yale University  
New Haven, Connecticut*

*Eero Saarinen and Associates*

*Ford Motor Company  
Sheffield, England*

*Harley, Ellington, Cowin and Stirton, Inc.*

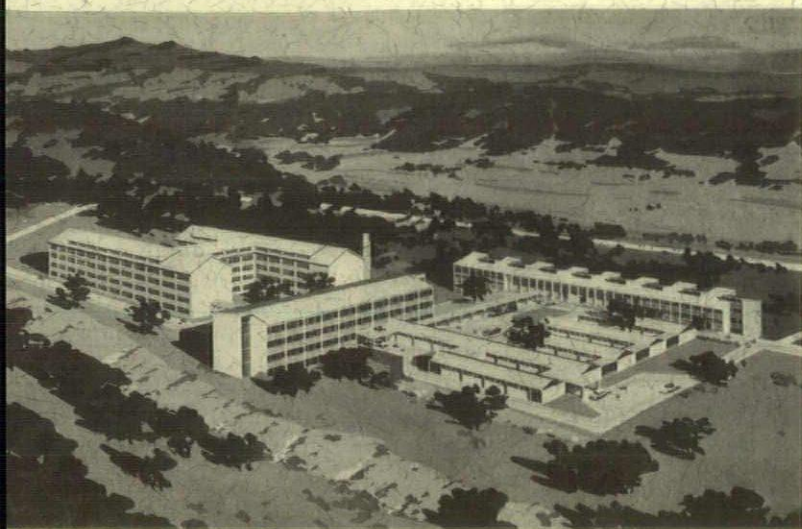


*United States Embassy  
London, England*

*Eero Saarinen and Associates*







*Yonsei University  
Seoul, Korea*

*Smith, Hinchman and Grylls Associates, Inc.*



*Kettle Moraine Boys School  
State of Wisconsin  
Department of Public Welfare*

*J. & G. Daverman Company*

## MSA SALUTES HERBERT G. DAVERMAN, GENERAL CHAIRMAN, 1963 MICHIGAN WEEK



The first architect to serve as top official of Michigan Week, Herbert Daverman as general chairman is spearheading the most extensive public relations program in the State of Michigan. His job is a big one. His organization includes 8,000 volunteers operating on 820 committees throughout 16 regions and 83 counties in Michigan. Six large advisory committees and two deputy chairmen work closely with him to promote the Michigan Week program in every sphere of life in the state—education, business, labor, industry, retailing, the church, cultural organizations, professional and trade associations, and community organizations.

"Michigan Week represents the type of broad community activity in which architects should participate more actively," emphasizes Mr. Daverman. "Architects' public and community relations activity should extend beyond the confines of the AIA. If the current fervor, within the AIA, for the Expanded Services Concept of Architectural Practice is ever to be more fully implemented, it is going to have to be sold, discussed and debated, not merely with other architects, but with prospective clients . . . people from all walks of life . . . the general public . . . the type of person one meets when engaged in such a community relations program as Michigan Week. These are the people who must be influenced to acquire a greater appreciation for architecture and the services of the architectural profession."

Since his appointment a year ago, Mr. Daverman, partner in the J & G Daverman Company, Grand Rapids, has attended 128 Michigan Week meetings and presented 67 speeches, radio and television interviews. His secretary, Angeline Smits, testifies that he has handled more than 1300 pieces of correspondence. It's not unusual for Mr. Daverman to follow a week's schedule calling for Michigan Week meetings in Houghton, Marquette, Sault Ste. Marie, Ann Arbor and Lansing . . . in addition to meeting with some of his firm's clients in Miami and San Antonio. Sound enough reason for the Daverman firm to operate its own airplanes!

Before receiving his present Michigan Week appointment, Daverman was state fund-raising chairman, regional chairman for 11 counties, and in 1962 he served as chairman of the Michigan Week Program Development Board. He is also a vice president of the Greater Michigan Foundation, the organization which sponsors Michigan Week. Other activities of this busy and community-minded architect include the United Community Services, Grand Rapids and Kent County, which he serves as president. He is a director of Old Kent Bank and Trust Company, Grand Rapids; Greater Grand Rapids Chamber of Commerce; and of Kendall School of Design, Grand Rapids. He is a member of the Grand Valley Chapter of AIA.

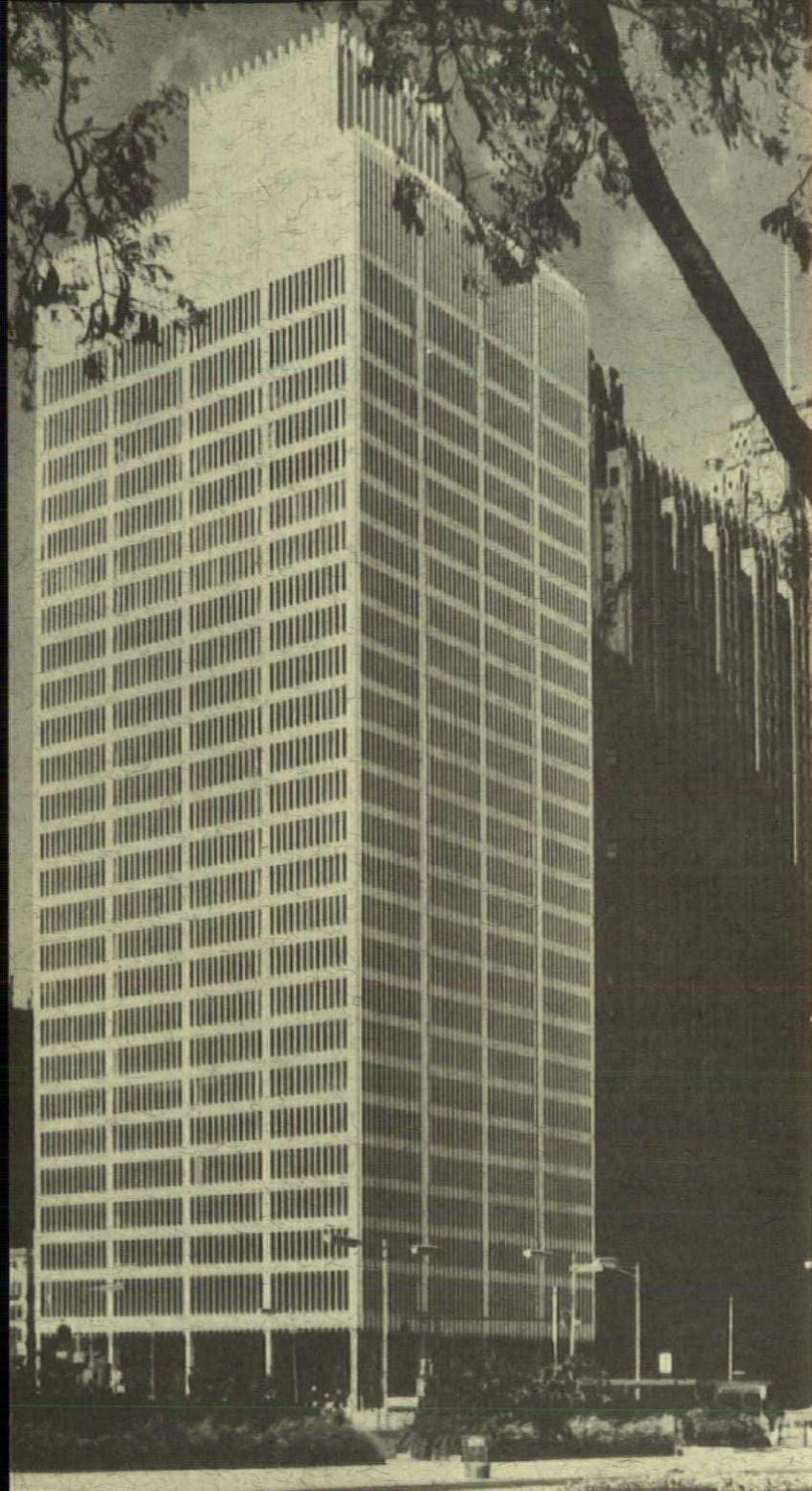




*one woodward avenue*  
Michigan Consolidated Gas Company

May, 1963 | 17





## **New Detroit offices of Michigan Consolidated Gas Company**

Minoru Yamasaki-Smith, Hinchman & Grylls  
Associated Architects and Engineers

Bryant and Detwiler Company—*general contractor*

Glanz and Killian Company—*mechanical contractor*

Hall Engineering Company—*electrical contractor*

American Bridge Division,

United States Steel Corporation—*structural steel*

Bearing the distinguished address "One Woodward Avenue," the new Detroit home of the Michigan Consolidated Gas Company has taken a prominent place in the city's growing Civic Center. It has the





*"Aspiring verticality" of the Gas Company building provides appropriate background for a camera study of Yamasaki.*

distinction of being the first privately owned high-rise office building built in Detroit in more than 30 years. Two Michigan architectural firms—Minoru Yamasaki & Associates and Smith, Hinchman & Grylls Associates—combined their talents in the architecture and engineering for the structure. Yamasaki provided the architectural design, while Smith, Hinchman & Grylls provided the preliminary and final engineering, working drawings and specifications, and field supervision.

Consultants were: W. B. Ford Design Associates, Detroit, interior and space planning; Bolt, Beranek & Newman, Cambridge, Massachusetts, acoustical engineering; and Professor William Housel of the University of Michigan, soils engineering.

Thousands of words have been and are being printed about the Gas Company's \$20-million addition to the Detroit skyline. Coverage in detail is being afforded the site, facing the Detroit River at the juncture of Woodward and Jefferson Avenues; the general design features embodying what Yamasaki terms "aspiring verticality" which minimizes the appearance of floor construction on the building exterior; and the unusual engineering, electrical and mechanical features.



*Robert F. Hastings is president of Smith, Hinchman & Grylls, the firm responsible for the architectural engineering for the Gas Company building.*



*A fat volume of specifications is examined by Frederick J. B. Sevald, vice president and project administrator, and Richard H. May, project director, Smith, Hinchman & Grylls.*

Thanks to the incomparable help of William M. Hutchins, director of press relations, and William Sweet, chief photographer, Michigan Consolidated Gas Company, Monthly Bulletin presents its coverage of photographic highlights. The following brief statistical resumé offers an interesting footnote to this coverage.

Approximate number of man hours in total construction of building—1,272,000 hours.

Structural steel tonnage is 6,900 tons with over 100 miles of welding provided for connections, etc.

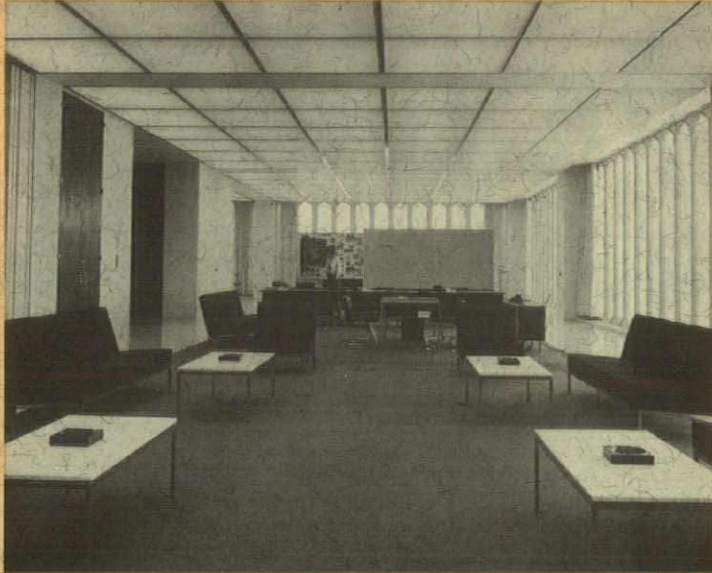
Approximate cost of a complete "typical" floor is \$475,000.

Square foot cost of exterior skin is \$12.50 per square foot. Cost per running foot of interior office plaster partitions, finished, is \$17.70 per linear foot.

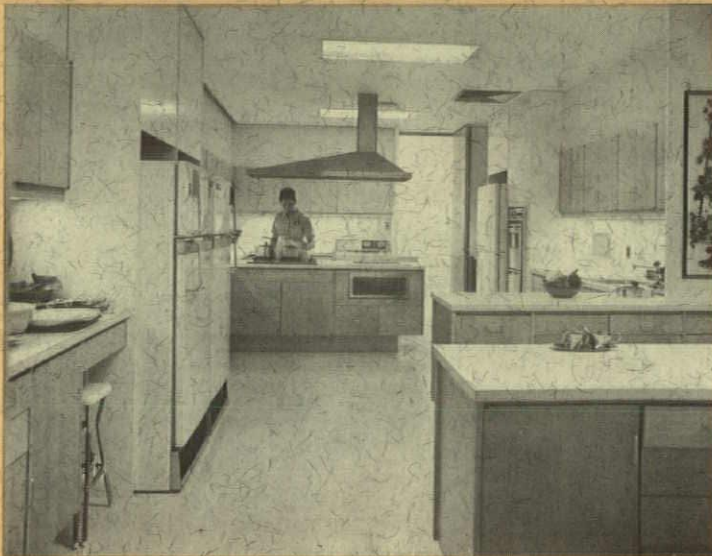
Precast wall panels total 4,503 pieces with the typical panel weighing 2,132 pounds. Total length of cable used for pre-stressing panels is 190,000 feet or about 36 miles.



*Red is a dominant color in the public lounge area. A bluish tone is used in the furniture while the carpet boasts a handsome shade of "fireman" red.*



*The reception area of the second floor commands a striking view of the Detroit River and the skyline of the city of Windsor. Model kitchens and gas appliances are on display in an adjacent area.*



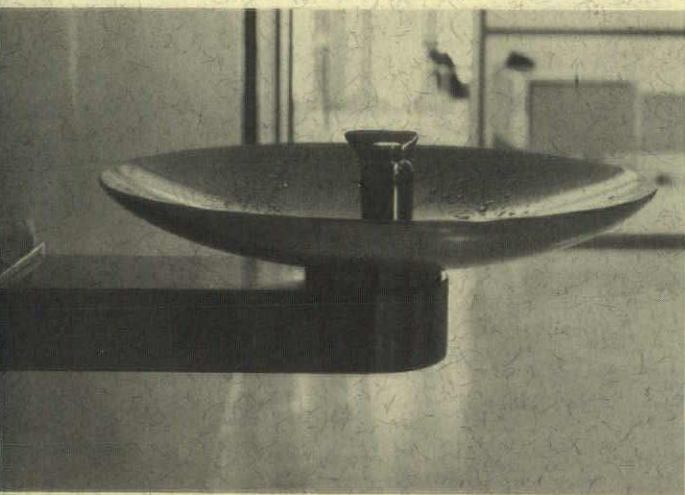
*The last word in test kitchens is housed on the second floor, which is given over to customer service and home economics functions. Here recipes are tried and new ones created for the benefit of Gas Company customers.*



*Set up for dining, the second floor meeting room can quickly be converted for auditorium functions featuring the demonstration kitchen on stage. A projection room assures even wider use for showing of films and slides.*

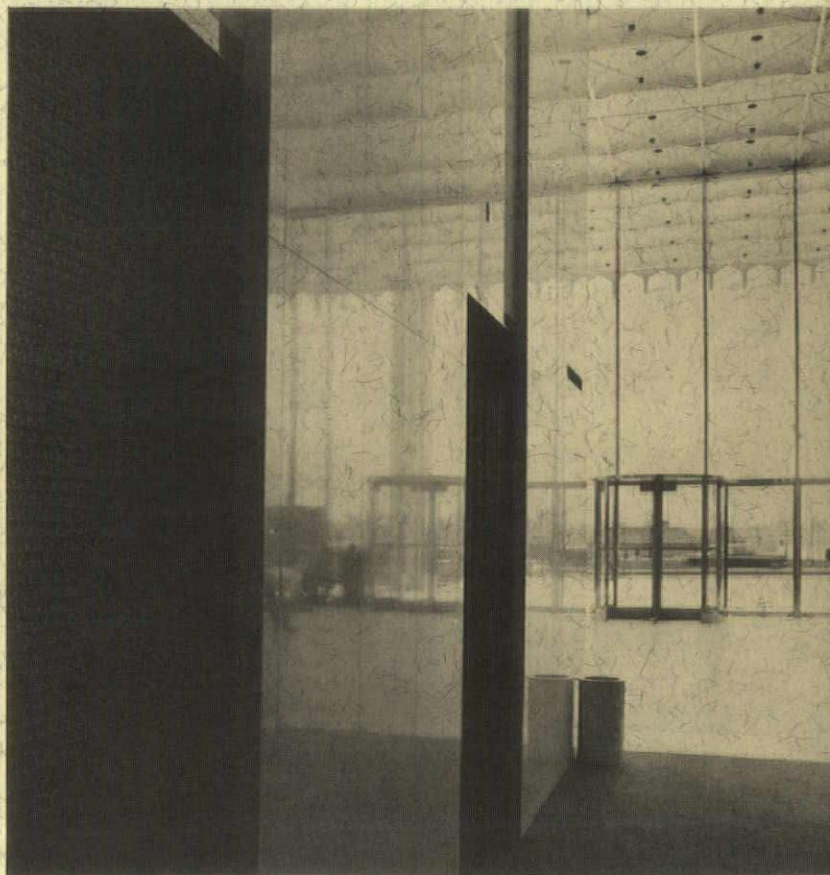
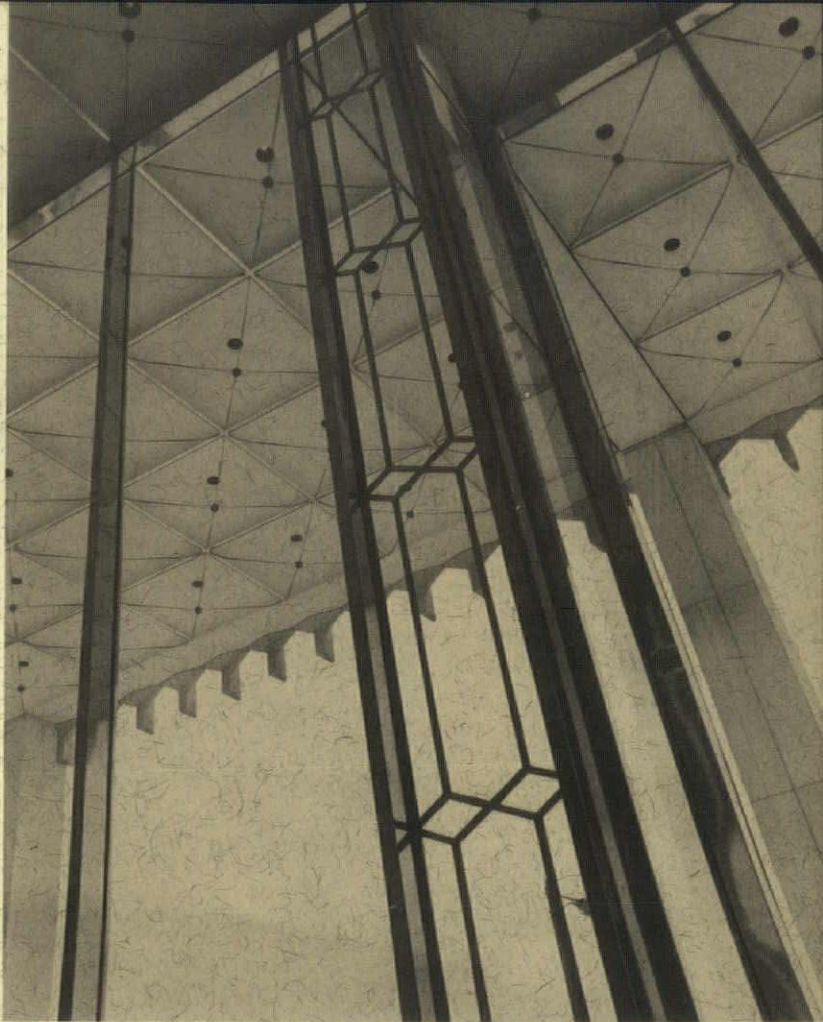


Working in conjunction with the Smith, Hinchman & Grylls electrical department, Mr. Du Sell also designed the unusual "jewel lighting" units in the ceiling of the lobby and the surrounding arcade. A sparkling effect is achieved by suspended gas-blue multi-faceted elements in the center of four-foot square domes upon which spotlights shine.



Sleek design for a drinking fountain is the work of Architect James S. Sudler of Denver. Similar fountains also appear in Yamasaki's Reynolds Building, located just outside of Detroit.

D. Lee Du Sell, architectural sculptor from Liverpool, New York, designed the elevator doors located on the lobby floor.

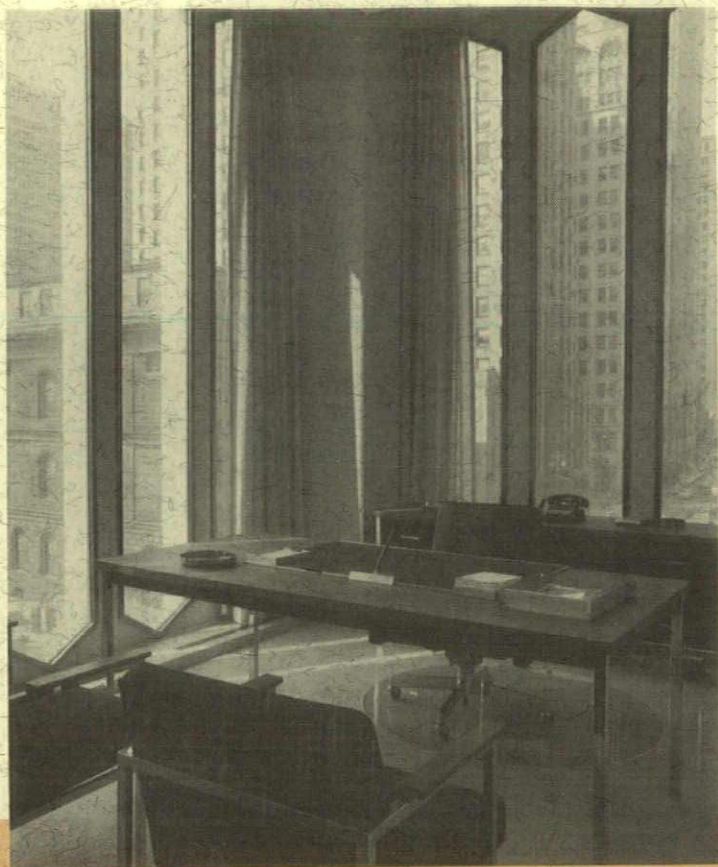






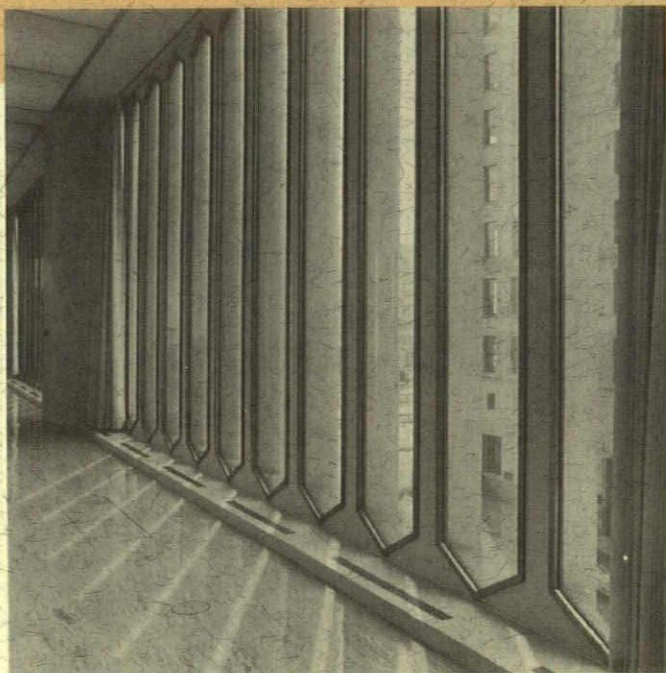
*"The fastest elevators in town" operate behind these closed doors. They clock 600 feet per minute for the first 14 floors . . . then pick up an additional 400 feet per minute to the top floor*

*Plastic coated walls eliminate future painting, are easily cleaned. Floor tile is never slippery even when waxed. Draperies of special fabric should look "like new" when ten years old.*



*A view for each office is a bonus enjoyed by most company employees. A specially designed chair offers interchangeable and removable upholstered parts. The chair is a reinforced plastic shell with a variety of bases for specific uses.*

*Stainless steel window frames were designed so that glass could be installed from the inside. Thanks to "tension mullions," the windows will withstand winds up to 100 miles an hour with rain equal to 30 gallons a minute.*

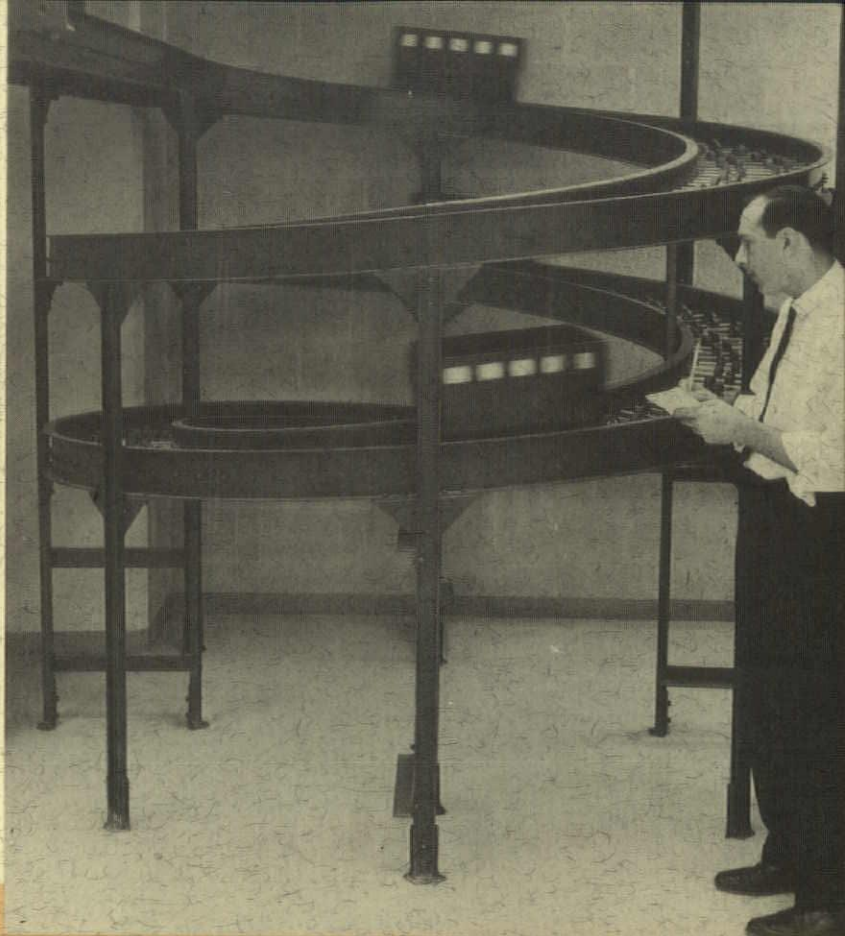
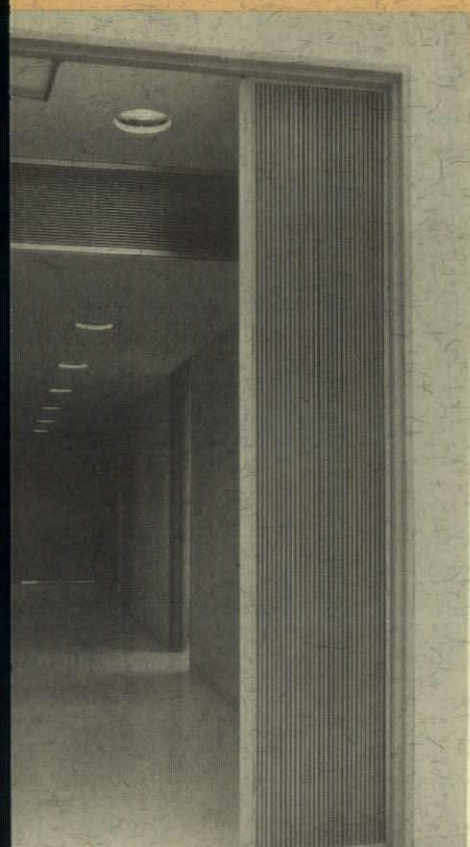






*In its new quarters, the Gas Company utilizes 20 per cent less space than it formerly occupied in seven buildings scattered through the downtown area. Layout of office and work areas was handled by W. B. Ford Associates.*

*Mechanical systems are housed in the suspended ceiling of this service corridor.*



*Small packages and mail are distributed between all floors by a continuous, automatic loading and unloading vertical conveyor. Each 16" x 12" conveyor tray has a capacity of 30 pounds.*

*Ceiling illumination in the communications center presents a busy pattern. Condensation and integration of structural, architectural, mechanical and electrical elements resulted in a ceiling to floor construction depth of 3' 1", providing luminous ceilings and air distribution normally requiring upwards of 4' 10".*

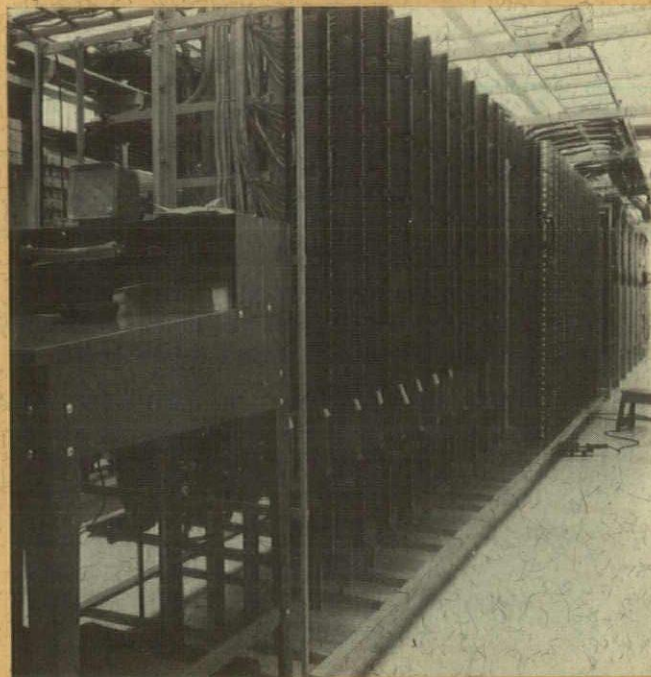




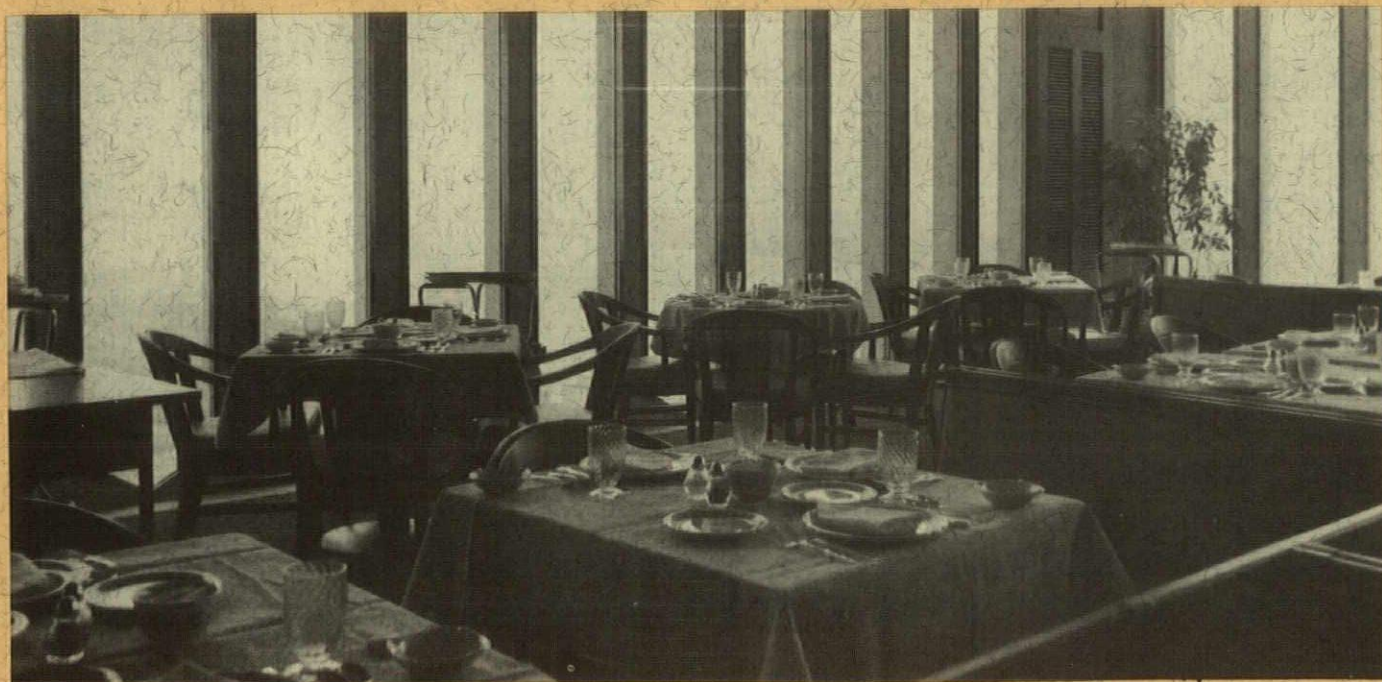


*Windowless walls of the 27th and 28th floors, which house mechanical rooms and building services are set back behind grille work and, along with the penthouse, are illuminated with mixed primary colored lights, affording a variety of effects.*

*Nerve center of the telephone system, large enough to service a good-sized town, is this communications center. Nearly 2,000 miles of telephone wire, all concealed in the floors, were installed by Michigan Bell Telephone Company. The installation, providing a 16-position switchboard and 1,500 telephones, required three years of planning.*



*"Top of the Flame" is Stouffer's newest restaurant. A spectacular view adds luster to a menu with Oriental overtones. Also housed in the building, in addition to four floors of individual tenants, are the Michigan Wisconsin Pipe Line Company, the American Louisiana Pipe Line Company, and the American Gas Service Company.*







## Pre-packaged Door Hoods

• **Convenience Plus**—shipped assembled, ready to install, beautiful, distinctive appearance. Certified for minimum live load of 30 lbs. per sq. ft. Design permits drainage as desired. *Deluxe model* 5' projection in widths of 7' and 10'. Fluted ceiling panels, barrel design. Available in natural aluminum finish or baked-on enamel colors. *Economy Model* low in price, yet tops in quality. Projection 3' 4", in widths of 5' and 8'. Straight roof design, fluted ceiling panels. Details submitted for both models on request.



**Marquees . . .** Beautiful protection for store, plant, school, office . . . used on loading areas, entryways, docks and malls. Certified minimum load of 30 lbs. per sq. ft. (greater loads if desired). Complete drawings sent on request.



**O. O. MCKINLEY CO., INC.**

P. O. Box 55265 • Indianapolis 5, Indiana

*Sun and Weather Control Specialists*

Sweets 18E Mc

## Ingenuity DESIGNS A

### SPRING LOADED TENSION-MULLION

Through the coordinated efforts of Minoru Yamasaki-Smith, Hinchman & Grylls and the Moynahan Bronze Company, an entirely new concept in a mullion system has been designed for the first floor curtain wall of the new

### MICHIGAN CONSOLIDATED GAS COMPANY BUILDING

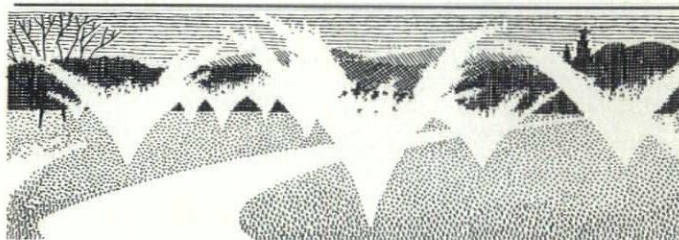
Aesthetics and strength are strange partners—however, both are employed most effectively with the mullion cross section dimension of only 2" x 4½" with resistance to wind loads of up to 30 pounds per square foot.

*When your next curtain wall project calls for ingenuity and imagination or you wish more specific information on the Tension-Mullion write to:*

### MOYNAHAN BRONZE COMPANY

(ARCHITECTURAL DIVISION)

FLAT ROCK, MICHIGAN



**SPECIFY A GREEN LAWN...**  
*for your next commission*



INCLUDE



Permanently installed Buckner sprinkler systems or hose sprinklers are providing better looking, easier to maintain turf for leading building areas all over the world. In your next commission insist on genuine Buckner sprinklers, key to successful irrigation.

■ Plans and specifications available to architects and engineers.

### SPRINKLER IRRIGATION SUPPLY COMPANY

1316 N. CAMPBELL RD.

ROYAL OAK, MICHIGAN

"Serving With Integrity Since 1925"



# JOHN H. FREEMAN COMPANY

*specification assistance*

- ✓ Distributors
- ✓ Builders' Hardware
- ✓ Contractors' Supplies

3627 CASS at BRAINARD  
DETROIT 1, MICHIGAN  
TEMPLE 1-6760

# W. J. REWOLDT CO.

*Mechanical Contractor*

PLUMBING  
HEATING  
VENTILATING  
AIR CONDITIONING  
POWER PIPING

WALnut 3-8374  
4220 Grandy Avenue  
Detroit 7, Mich.

# Turner Engineering Company

DEPENDABLE  
ELECTRICAL  
CONSTRUCTION  
FOR 46 YEARS

464 Brainard Street  
DETROIT 1, MICHIGAN  
TEmpLe 1-0470

Must acoustical  
ceilings be flat  
(and dull, dull, dull?)



NO, NO, NO, NO, NO!

Zono-Coustic Acoustical Plaster sprays on, stays on the trickiest configurations, gives you high sound absorption (NRC = .60), a choice of attractive surfaces and colors, light reflectivities from 50% to 70%. For complete information, write:

## ZONOLITE

ZONOLITE COMPANY 135 S. LA SALLE STREET CHICAGO 3, ILLINOIS

 **JEFCO BRICK**

**QUALITY**  
Authentic tests assure JEFCO's superior quality. Developed through exhaustive research, produced by modern manufacturing. Quality maintained by continuous tests.

**5** DIMENSIONAL  
SIZES INCLUDING  
NORMAN & ROMAN

**9** DISTINCTIVE  
DECORATOR  
COLORFAST  
COLORS



AVAILABLE IN STANDARD AND ROCK FACE

 **JEFCO BRICK**  
a product of  
**DETROIT BRICK AND BLOCK CO.**

95 South St. Jean • Detroit 14 • VALley 2-5970



# NEWS

## CSI CONVENTION SET FOR MAY 20-22 IN DETROIT

Members of the Construction Specifications Institute will convene May 20, 21 and 22 in Detroit for their seventh annual convention. Hosting the event is the Detroit CSI Chapter. Convention headquarters will be located in the Sheraton-Cadillac Hotel where all social activities will originate. All business and technical sessions, as well as the exhibits, will take place at Cobo Hall. Keynote speaker, Terrell R. Harper of Harper & Kemp, Dallas, Texas, will be heard at the 11 am session on Monday, May 20. Additional information and program details are available from: The Construction Specifications Institute, 307 Du Pont Circle Building, Washington 6, D.C.

## MID-MICHIGAN CHAPTER REFRESHER COURSE

Directed by the chapter's education committee chairman, Angelo P. Lucia, Mid-Michigan Chapter is again holding a Refresher Course this spring at

East Lansing. The course is programmed to reinforce and refresh previous training and experience of architectural registration candidates who wish to write the Michigan registration examinations. Faculty includes registered architects and engineers with teaching ability and experience drawn from Michigan State University, University of Michigan and professional offices.

## AWARD PRESENTATIONS BY SAGINAW VALLEY CHAPTER

Four award presentations have been announced by the Saginaw Valley Chapter of AIA. In the area of craftsmanship and allied arts, Edward Freidinger of Bay City has been honored for his continued standards of excellence in the field of residential construction. In architectural design, Alden B. Dow, Inc., Architect, received the honor award for Northwood Institute in Midland. In the same field, Wigen and Tincknell and Associates, Architects, of Saginaw received a merit

award for Bridgeport High School. A merit award was presented to Oeming and Waters, Architects, of Saginaw, for the Clare residence of Dr. Donald Dunlop.

## STUDENT MEETING AND BID REGISTRY WORKSHOP

Minoru Yamasaki, FAIA, will address the annual joint meeting of the Detroit Chapter, AIA, and the University of Detroit, University of Michigan and Lawrence Institute of Technology Student Chapters, on Wednesday, May 15th, following a workshop session on the use of the Bid Registry. Both the workshop and meeting will be held on the campus of the University of Detroit.

The workshop is scheduled for 4:00 P.M. in the Fireside Room, Student Union Building, and will be conducted by Paul B. Brown, Past President of the Detroit Chapter.

Examples of student projects will be on exhibit in the Architecture Department, Engineering Building between 6:00 and 7:00. Dinner will be served in the Student Union Ballroom at 7:00 with the program to follow.

All members of the Detroit Chapter are urged to attend the workshop and to meet the students at this meeting.

## MERCIER BRICK CO.

DEARBORN, MICH.

### MANUFACTURERS OF AUTOCLAVED

LIGHTWEIGHT  
•  
MEDIUM WEIGHT  
SLAG  
AND  
CONCRETE  
BLOCK

Distributors of:

Glazed Brick, Structural Facing Tile, Acid Brick, Face Brick, Floor Brick, Quarry Tile, SPECTRA-GLAZE and a complete line of Refractories in the Metropolitan Detroit Area.

## SMCAD

INDUSTRY FUND

SHEET  
METAL  
CONTRACTORS  
ASSOCIATION  
OF DETROIT

WM. J. RETTENMIER  
Exec. Secretary

2411 Fourteenth St.  
Detroit 16, Mich.  
WO 3-1209

## TRANSIT - MIXED CONCRETE

▼  
**AUTO-CLAVE  
CURED BLOCK  
FACE BRICK**

•  
**Complete Line of  
Building Supplies**



## BOICE

**BUILDERS' SUPPLY**

MANUFACTURERS OF  
BRICK—BLOCK—CONCRETE

545 Telegraph Road Pontiac 19, Michigan  
Telephone Federal 5-8185



### 1963 DETROIT CHAPTER HONOR AWARDS PROGRAM

All corporate members of the Detroit Chapter AIA are invited to participate in the 1963 Honor Awards Program. Intended to honor members of the profession for distinguished accomplishment in architecture, entries for buildings completed since May 1, 1960, will be judged by three prominent architects in a major city other than Detroit.

The Honor Awards Program is being reactivated as one of the more important tools of the Detroit Chapter in the chapter's constant attempt to promote the profession of architecture. Its prime purpose is to make the public aware of the outstanding buildings developed by architects locally, nationally or internationally. Those who are responsible for outstanding accomplishment will be the recipients of awards to signify the respect their professional colleagues pay to them for the service they have rendered to the profession. Owners of the award winning projects will be presented with companion awards. A further feature of the program will be an invitation to the three Detroit area schools of architecture for submission of student projects. A special award, aiming toward promotion of closer ties between the architectural college student and the practicing architect, will be presented.

Corporate members in good standing will be eligible to submit as many entries as they desire at a fee of \$15 for each entry.

Student projects will not require an entrance fee. A program of rules with details of schedule and an entry slip will be mailed to the chapter membership in May. Similar information will be provided to the Schools of Architecture at this same time.

Award winners will be required to prepare exhibition mounts for display at the annual chapter meeting in October when presentation of awards will be made. These mounts will also be featured in exhibitions to be arranged in prominent locations throughout the city and eventually throughout Michigan and other states.

### BID DATE CLEARING HOUSE

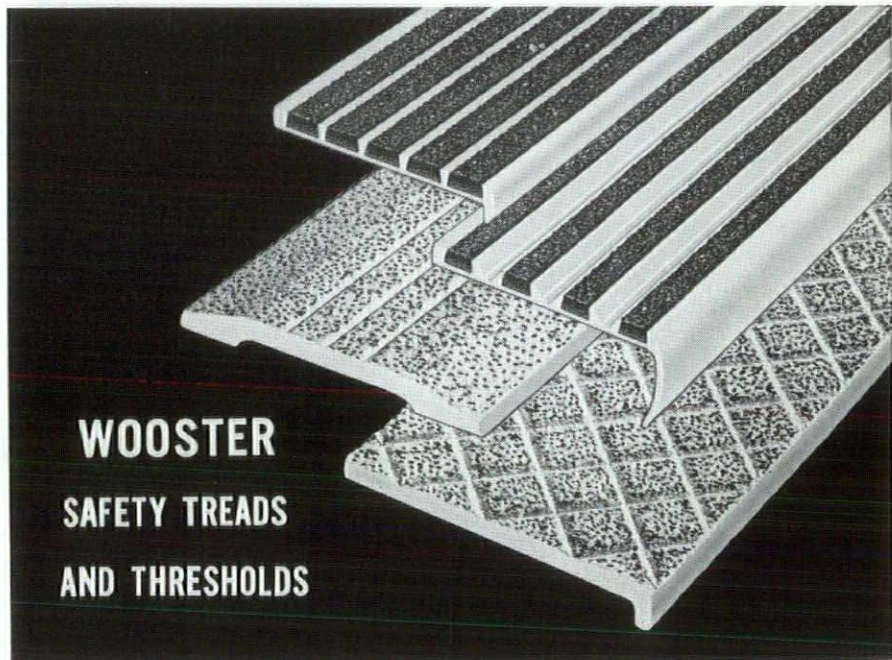
Builders and Traders Exchange of Detroit, through its Secretary-Manager, William C. Dennis, has offered to serve as a clearing house for due dates for bids. This offer has been extended because of recent instances when bids on several jobs have been due on the same day from the same bidders.

Architects are invited to call Builders and Traders before announcing a due date to determine if other bids will be due on the same day. By so doing, it will be possible to keep future duplication of bid dates to a minimum. This will permit the bidders to apply the careful concentration required to completing a bid and avoid possible errors in bidding as a result of trying to compile a number of bids due at the same time.

This service is offered by the Builders & Traders Exchange in the best interest of the industry, and has been endorsed by the Board of the Detroit Chapter, AIA, and the J.C.I.C. (Joint Construction Industry Committee.) The expense of operating the clearing house will be borne by the Exchange.

All architectural firms are urged to avail themselves of this service.

## MAKE EVERY STEP A SAFE ONE!



### WOOSTER SAFETY TREADS AND THRESHOLDS

### ORDER FROM STOCK-Shipped the same day!

#### Safety Nosings

Types 131, 46, 101

2'0", 2'6", 2'9", 3'0",  
3'3", 3'6", 3'9", 4'0",  
4'3", 4'6", 4'9", 5'0",  
5'6", 6'0"

#### Thresholds

Types 115, 115-S

2'6", 2'8", 3'0", 3'4",  
4'0", 5'0", 6'0"

Other types and  
lengths fabricated to  
order.

The modern line—the  
most complete line of  
Abrasive Safety Stair  
Treads, Nosings, Threshold,  
and other related products.

Highest quality architectural  
metal. Provides safe underfoot pro-  
tection. Long wearing service  
under all traffic conditions. Beau-  
tiful appearance that lasts the life  
of the stairs.

**WOOSTER PRODUCTS INC.**  
Spruce St., WOOSTER, OHIO

All stock orders received  
by 11 A.M. are guaran-  
teed to ship the same day.  
CALL Angelus 2-8065.

See our 20-page catalog in SWEETS Archi-  
tectural File WO 13-B or write for free copy.



Call  
**WOODWARD**  
**2-0512**



ROOFING AND  
SHEET METAL  
WORK  
INDUSTRIAL AND  
RESIDENTIAL  
NEW ROOFS—  
ASPHALT  
SHINGLES  
COMPLETE  
ROOFING AND  
SHEET METAL  
REPAIRS FOR  
OVER 84 YEARS

On Top Since '79  
**D. W. Candler**  
**ROOFING COMPANY, INC.**  
551 E. VERNOR HWY. • DETROIT  
D. W. CANDLER •

offering . . .

a wide range of products and  
services to architects who de-  
mand quality, service and de-  
pendability.

- Supersines
- Bronze and Aluminum Tablets
- Cast and Fabricated Letters
- Custom Designed Signs and Symbols
- Traffic Control and Street Signs

TWinbrook 2-6200

Manufacturers . . . Distributors

**THE  
SUPERSINE  
COMPANY**

17131 Van Dyke Ave., Detroit 34, Michigan  
Associated with Brown and Raisch Co.

## TURNER-BROOKS, INC.

Contractor for the

**Dex-O-Tex**

traffic bearing roof deck

on the

MICHIGAN CONSOLIDATED  
GAS COMPANY BUILDING

— SINCE 1933 —

A complete line of floor coverings  
and acoustical materials.

9910 Dexter      TOWnsend 8-2470  
Detroit 6, Michigan

## M. Den Braven

■ Our 50th Anniversary ■

— SHEET METAL —

— VENTILATING —

— AIR CONDITIONING —



9080 Alpine Avenue  
Detroit 4, Michigan  
WE 3-7494-5-6

# 19% MORE STEEL IN THE MORTAR

with **WAL-LOK**

HORIZONTAL MORTAR JOINT REINFORCING

Other reinforcing may be heavier but, Grade for Grade and dollar for dollar, WAL-LOK puts more steel in the mortar where it counts—19.2% more than competitive products. SUPERSTANDARD Grade has 8 ga. Siderods rather than the 9 ga. used by others and it's the Siderods that end up in the mortar. Ladder type construction means no wasted steel to get in the way of insulation, pipe on conduit in the walls • No extra freight on steel that serves no useful purpose. PLUS—many other features at no extra cost.

WRITE FOR NEW DESCRIPTIVE BROCHURE AND NAME OF DISTRIBUTOR NEAREST YOU

**WAL-LOK** DIV. OF LENAWEE PEERLESS, INC.  
1353 E. MICHIGAN, ADRIAN, MICH.

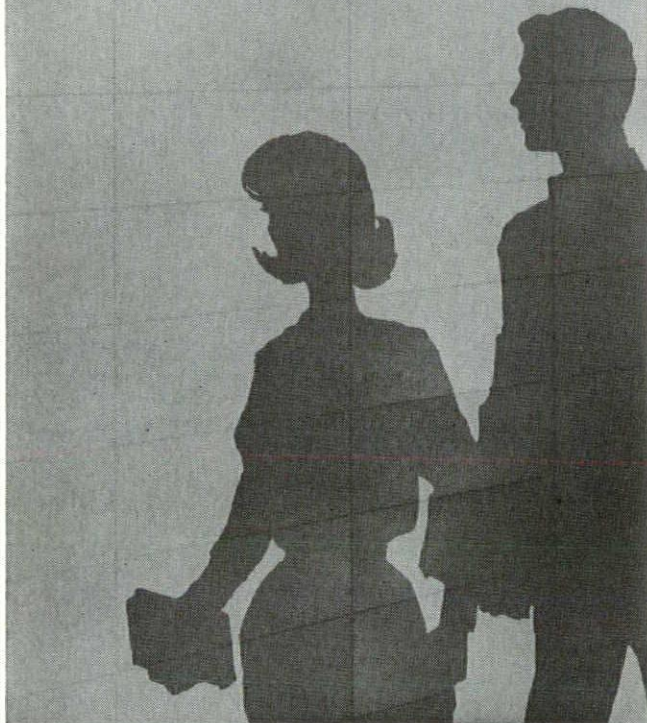




# now...

## GENUINE CERAMIC GLAZED STRUCTURAL TILE

AT THE PRICE OF ITS IMITATIONS!



**new**



# UTILITILE

REG

When low cost is your object — Utilitile is your material!

It is a high-grade ceramic glazed structural tile, offered at the price of its imitations and other low-cost materials for utility interiors. Yet it gives you these everlasting advantages of ceramic glazed structural tile:

- Complete Fire Safety
- Permanent Color
- Low Maintenance Costs
- Natural Cleanliness
- Resistance to Chemicals
- High Resistance to Surface Impact

STOCKED FOR IMMEDIATE SHIPMENT IN ALL SHAPES NEEDED FOR A FINISHED JOB • SHIPPED IN MONEY-SAVING ARKETEX UNITIZED PACKAGES AT NO EXTRA COST.

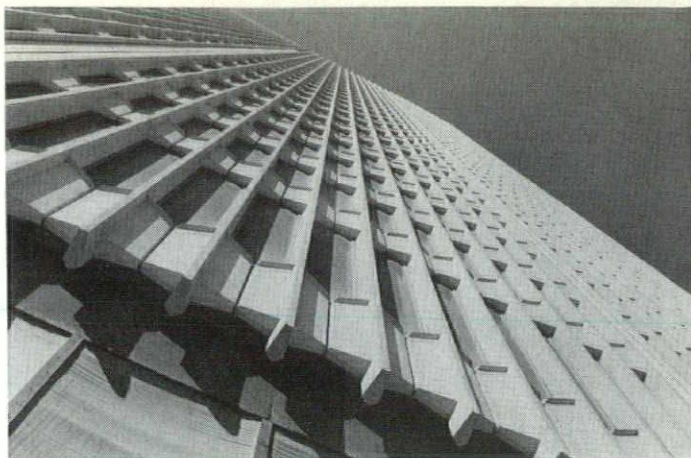


Get the full details right away.  
Send for the free Utilitile brochure.

created by  
**ARKETEX CERAMIC CORPORATION**  
BRAZIL, INDIANA  
The progressive name in structural ceramics

Lincoln Brick Co.  
Grand Rapids, Michigan

Distributed by:  
Frederick B. Stevens Division  
of the Udylite Corporation  
Detroit, Michigan



### Mo-Sai for Michigan

### by Otto Buehner & Company of Utah

Prestressed Mo-Sai panels of glistening white, exposed quartz aggregates in a white cement matrix form the exterior curtain walls on the aesthetically beautiful, free-standing Michigan Consolidated Gas Company Building designed by Minoru Yamasaki.



## SUPERIOR MARBLE SERVICE

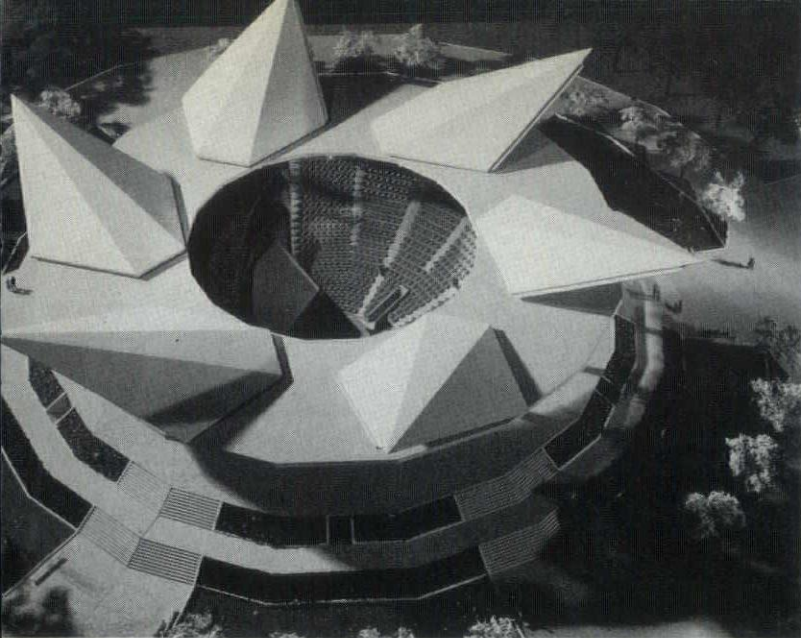
... Obtain the world's finest domestic and imported marble and granite, including MARKWA® thin marble tile — plus detailed information and expert technical assistance by contacting —

## THE DETROIT MARBLE CO.

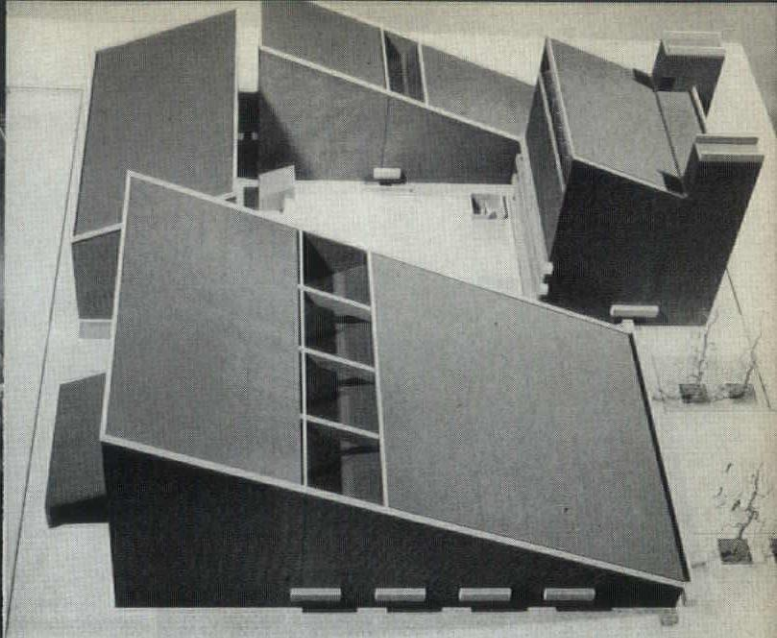
Representative of the Vermont Marble Company, Proctor, Vermont, world's leading producer and fabricator of foreign and domestic marbles.  
14255 Schaefer Rd., Detroit 27 Phone: 273-7088

Marble contractor for the Michigan Consolidated Gas Company Building.





*Edward Durell Stone and Eldon Elder designed this 2,000-seat open-air theater with mechanically louvered roof.*



*A theater complex to house a college drama department is the work of Paul Schweiker and George C. Izenour.*

## Ideal Theater Exhibition at Detroit Institute of Art

An exhibition of The Ideal Theater, eight concepts of modern architects, will be on view in Galleries 36 and 37 of the Detroit Institute of Arts through May 12. Seventeen architectural models, presented in three-dimensional display units carrying theatrical lighting, and reproductions of architectural plans, photographs and texts describing each project, are included in the exhibition.

Prepared and circulated by The American Federation of Arts under a grant from the Ford Foundation, the exhibition represents the work of eight designer-architect teams who developed their ideas under grants from the Ford Foundation Program in Theater Design.

The architects and designers, and their projects shown in the current exhibition are: Paul Rudolph and stage designer Ralph Alswang, a theater using new film-projection tech-

niques and live stage actional simultaneously; Edward Durell Stone and stage designer Eldon Elder, a 2,000 seat outdoor theater with "convertible" top; designer Barrie Greenbie and choreographer Elizabeth Harris, a dance theater with adjustable stage levels; Peter Blake and stage designer David Hays, a small flexible open-stage theater.

Paul Schweiker and designer-engineer George C. Izenour, a college drama department complex; Frederick J. Kiesler, an urban theater center; Edward L. Barnes and stage designer Jo Mielziner, an "intimate music-drama house," and Ben Schlanger and stage designer Donald Oenslager, a form-and-space concept to produce the maximum number of desirable seats in various types of theater.

Grants for these projects represented one phase in the Ford Foundation Program in Humanities and the Arts

and its interest in creating new opportunities for talented artists at particular stages in their careers. According to W. McNeil Lowry, director of the Foundation's program, these researches were also intended to stimulate theatrical producers and managers in new concepts of staging not yet represented in New York theater design.

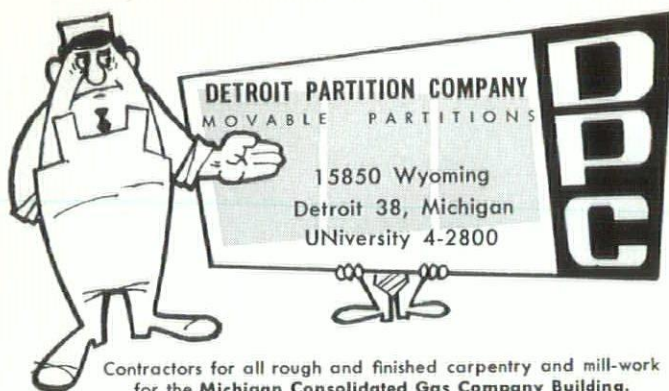
In previous activities with theatrical artists, the Ford Foundation has offered particular opportunities to playwrights, directors, poets, and novelists wishing to test their interest in the dramatic form, and actors wishing to work for sustained periods in professional residential ensembles.

A catalog of 144 pages, published by The American Federation of Arts, is available in connection with the exhibition. This publication documents the project with numerous photographs of the models and reproductions of the plans and renderings. It also includes text by the participating designers and architects, as well as commentaries by playwright Arthur Miller, stage designer Peter Larkins and Architect Pietro Belluschi, FAIA.



*Barrie Greenbie and Elizabeth Harris collaborated on a dance theater with adjustable stage levels.*





**DETROIT PARTITION COMPANY**  
MOVABLE PARTITIONS

15850 Wyoming  
Detroit 38, Michigan  
UNiversity 4-2800

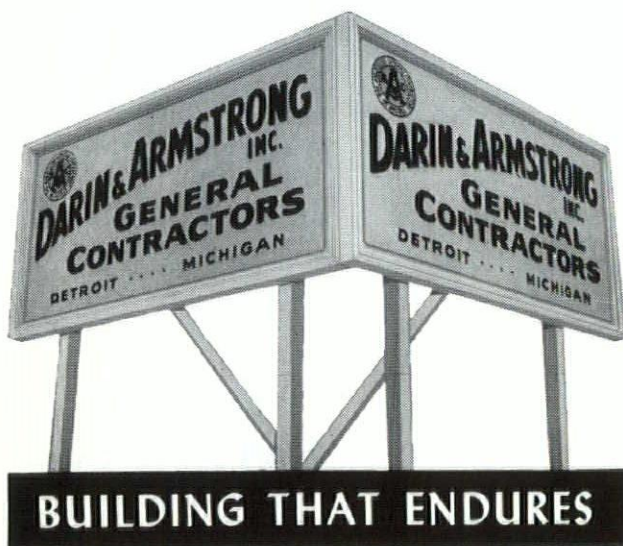
**DPC**

Contractors for all rough and finished carpentry and mill-work  
for the Michigan Consolidated Gas Company Building.

## MICHIGAN DRILLING CO.

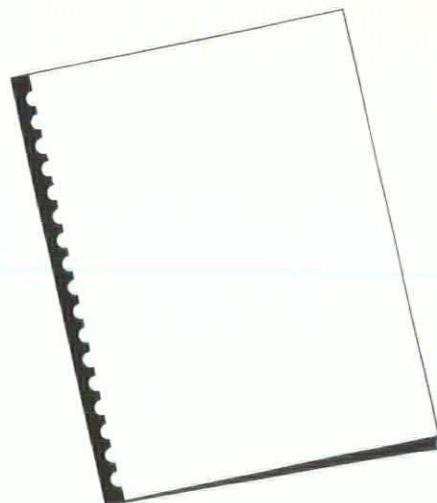
- for • Complete Laboratory Testing
- Diamond Core Drilling
  - Soil Test Borings For Foundation  
and Other Structures

14555 Wyoming Ave. Detroit 38, Michigan  
WEBster 3-8717



**DARIN & ARMSTRONG INC.**  
GENERAL CONTRACTORS  
DETROIT • MICHIGAN

**BUILDING THAT ENDURES**



We have many illustrated brochures demonstrating interesting applications of the products we distribute which you may wish to add to your reference file. They include authentic colonial woodwork, interior doors of all types, decorator Marlite and Masonite paneling and Anderson windows.



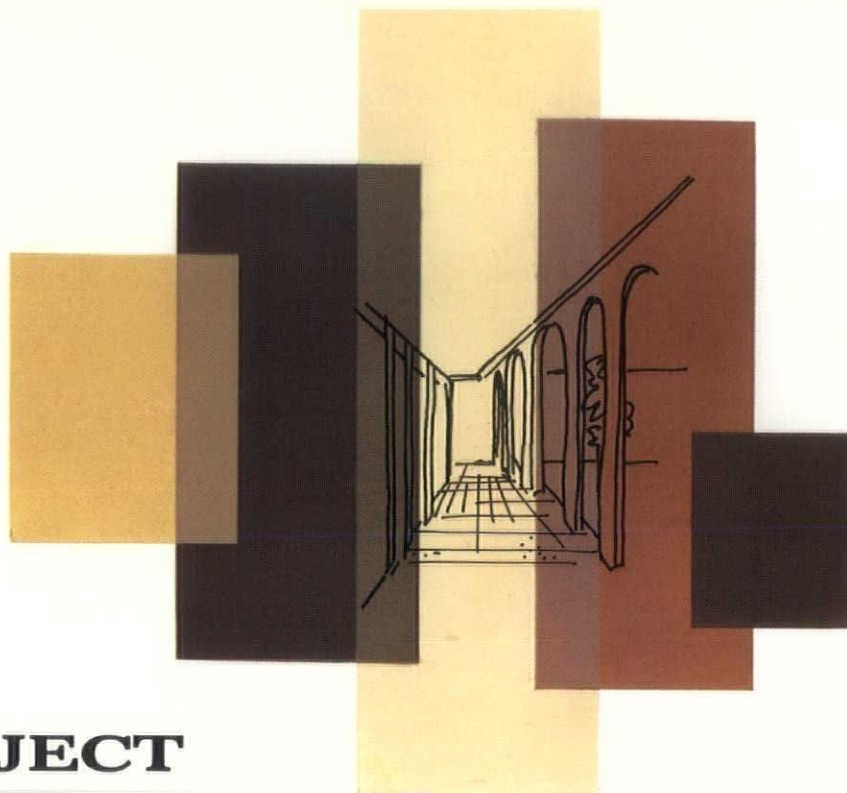
*K & R will work  
directly with you  
in providing all the  
information you  
require for writing  
specifications on  
products they  
distribute*



**KIMBALL & RUSSELL INC.**  
WHOLESALE SASH AND DOOR DISTRIBUTORS  
2127 FENKELL AVE. DETROIT 38, MICH. UN. 1-3480

Bring your clients to our showroom at any time to see our display of Anderson windows and inspect them for construction and operation.

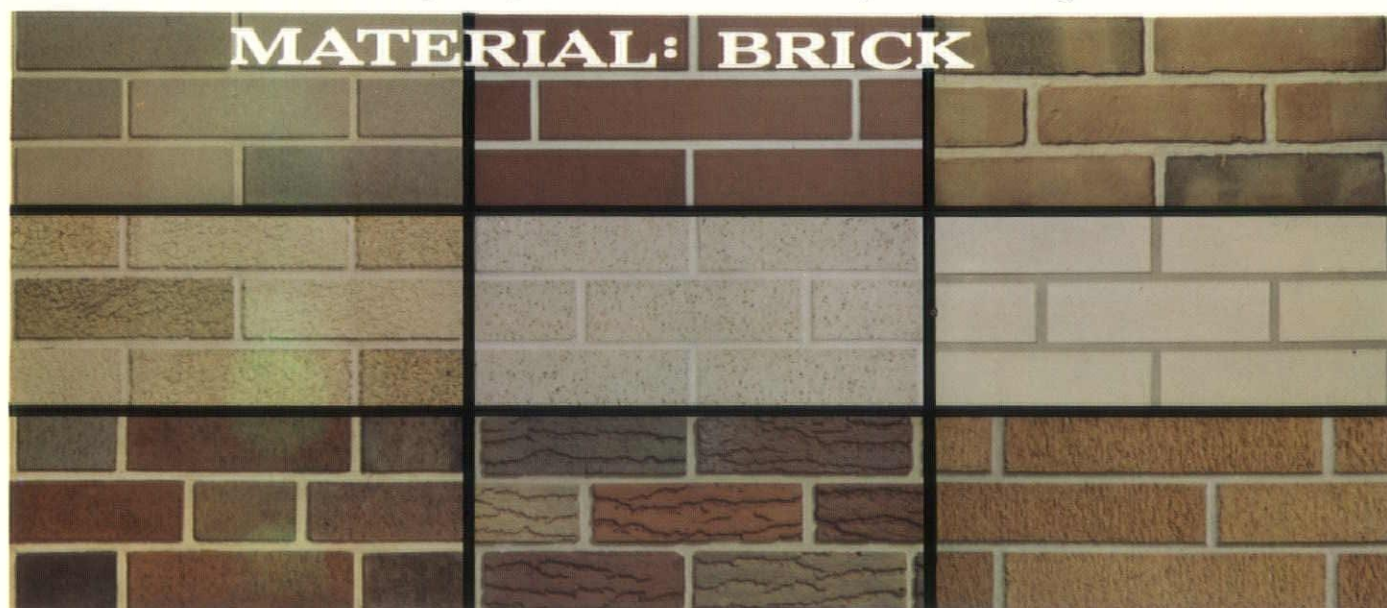




## **SUBJECT**

## **ESTHETICS: COLOR**

Brick offer the architect the widest range of permanent colors of any building material. Color which has been proven by time. Color which can be used in straight shades or subtle blends. Color which does not need yearly cleaning to sustain its appearance. Color which can be one of an architect's prime design tools. Color . . . attractive, permanent "fired in" color . . . synonymous with Brick, the imaginative material.



**REGION 4 - STRUCTURAL CLAY PRODUCTS INSTITUTE**  
2556 CLEARVIEW AVENUE, NORTH WEST, CANTON, OHIO

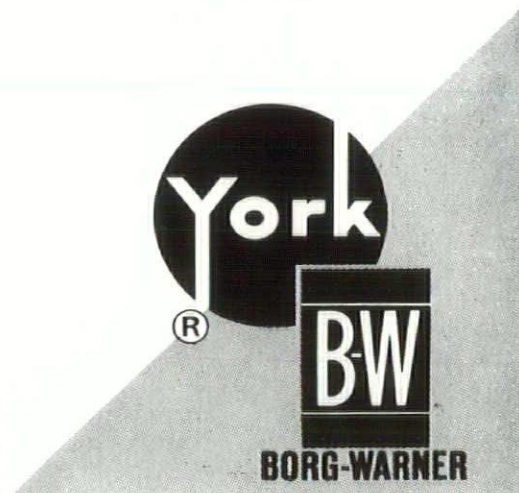


CHAGRIN FALLS, O.: 15200 S. DEEPWOOD LANE  
COLUMBUS, OHIO: 1777 INCHCLIFF ROAD  
PITTSBURGH, PA.: 807 STANDARD LIFE BLDG.



Manufacturers of air conditioning  
and refrigeration equipment for the

## MICHIGAN CONSOLIDATED GAS COMPANY BUILDING



District Office: 14385 Wyoming Ave.  
Detroit 38, Michigan Phone 933-1696

**YORK** CORPORATION  
Subsidiary of  
Borg-Warner Corp.  
YORK, PENNSYLVANIA  
THE QUALITY NAME IN AIR CONDITIONING AND REFRIGERATION

## ADVERTISERS' INDEX

Aerofin Corporation	8
Arketex Ceramic Corporation	30
Belden Brick Company, The	3rd Cover
Boice Builders' Supply	27
Buchner and Company, Otto	30
Candler Roofing Company, Inc., J. D.	29
Darin & Armstrong	32
Den Braven, M.	29
Detroit Brick and Block Co.	26
Detroit Edison	4
Detroit Marble Co., The	30
Detroit Partition Co.	32
Freeman Company, John H.	26
Hall Engineering Co.	7
Harlan Electric Co.	1
Hudson's	2
Kimball & Russell, Inc.	32
Levy Company, Edw. C.	4th Cover
Libbey-Owens-Ford	5
McKinley Co., Inc., O. O.	25
Mercier Brick Co.	27
Michigan Consolidated Gas Company	2nd Cover
Michigan Drilling Co.	32
Moynahan Bronze Company	25
Portland Cement Association	6
Rewoldt Co., W. J.	26
SMCAD	27
Spitzley Corporation	34
Sprinkler Irrigation Supply Company	25
Structural Clay Products Institute	33
Superior Company, The	29
Supersine Company, The	29
Turner-Brooks, Inc.	29
Turner Engineering Company	26
Wal-Lok Div. of Lenawee Peerless, Inc.	29
Wooster Products, Inc.	28
York Corporation, Subsidiary of Borg-Warner Corp.	34
Zonolite Company	26

# CALL SPITZLEY FIRST!



## SPITZLEY CORPORATION



1200 W. Fort St., Detroit 26, Mich. • WOardward 1-0840

2217 W. St. Joseph St., Lansing 4, Mich. • IVanhoe 7-5981

PLUMBING • HEATING • INDUSTRIAL PIPING • PIPE FABRICATING • VENTILATING • AIR CONDITIONING

for  
Plumbing, Heating,  
Industrial Piping,  
Power Piping,  
Ventilating, and  
Air Conditioning

INDUSTRIAL AND  
COMMERCIAL SYSTEMS  
INSTALLED—REPAIRED  
REMODELED



# ARCHITECTURAL CREATIVITY DEMANDS

more  
distinctive  
colors

more  
adaptable  
sizes

more  
exclusive  
textures

AND

# BELDEN BRICK

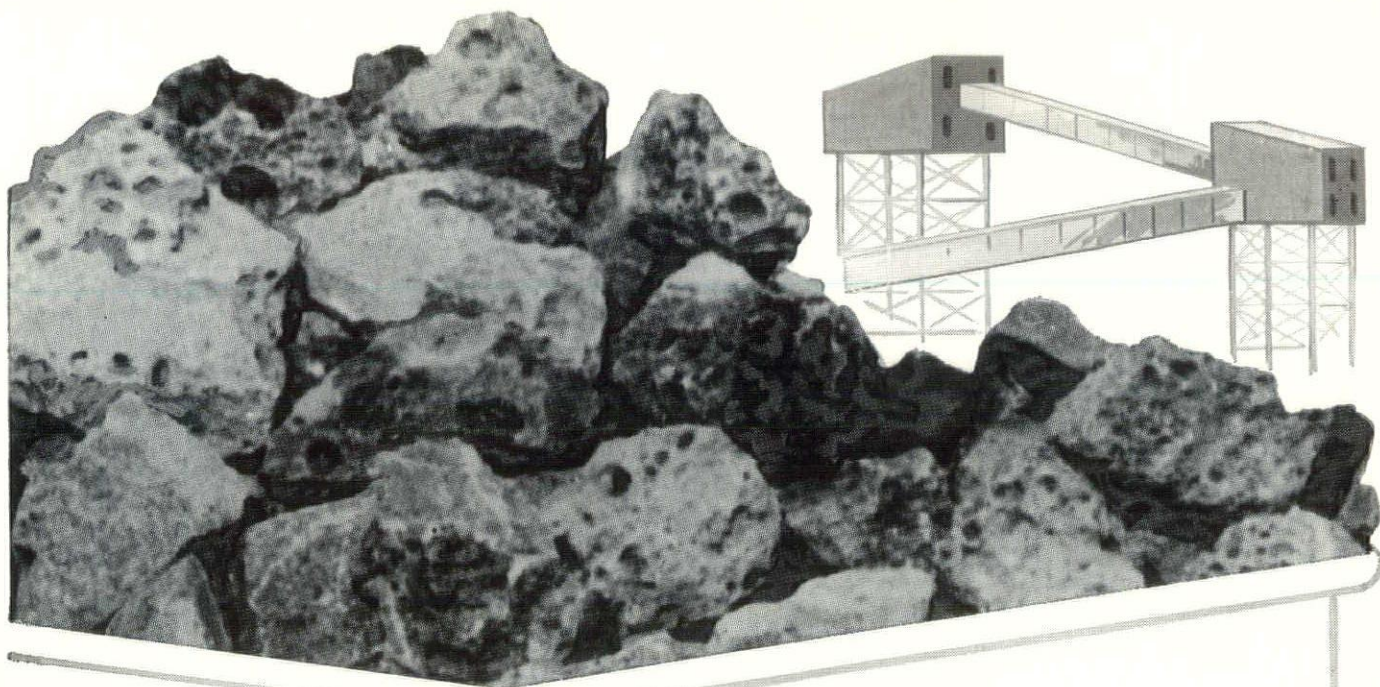
## FULFILLS THE DEMAND!

THE **B**elden  
**B**rick

COMPANY, CANTON, OHIO

Architectural creativity is most effectively interpreted when distinctive colors, textures and sizes of brick are available. To fulfill the demand of imaginative architects, BELDEN BRICK offers the largest selection of colors, textures and sizes in the industry. Your nearest BELDEN Dealer will gladly provide samples and new full color brochure. EIGHT MODERN FACTORIES LOCATED AT CANTON, SOMERSET, PORT WASHINGTON, SUGARCREEK, AND UHRICHSVILLE, OHIO





**FLEXIBLE BASE  
Construction**

**RAILROAD  
BALLAST**

**CONCRETE  
MASONRY**

**MINERAL  
WOOL**

**CONCRETE  
Construction**

**FILTER  
MEDIA**

**BITUMINOUS  
Surface  
Treatment**

**PORTLAND  
CEMENT**

**ASPHALT  
PAVING**

**LIGHTWEIGHT  
CONCRETE**

**ROOFING  
AGGREGATES**

**AGRICULTURAL  
PURPOSES**

## A dozen vital industries prefer BLAST FURNACE SLAG

Why is BLAST FURNACE SLAG preferred by all these industries? *Tested and proved superiority!* SLAG AGGREGATE is 99% free of deleterious materials . . . *purified in fire* at 2500 degrees. It is 100% crushed into rough cubical shapes that provide a maximum bond with mortar. SLAG soundness is unaffected by freezing and thawing. It weighs about *ten pounds less* per cubic foot than natural aggregate concrete. For asphalt, it gives greatest resistance to shoving and shear failure . . . yields as much as 15% more yardage per ton . . . has the highest factor of skid resistance of all Michigan asphalt pavements. Specify BLAST FURNACE SLAG . . . the Modern Aggregate that *improves on nature*.

### EDW. C. LEVY COMPANY

8800 DIX AVE., DETROIT 9, MICH. • VI 3-7200

*Pioneers In Quality Aggregates*