

AMERICAN INSTITUTE
OF
ARCHITECTS
APR 6 1962
LIBRARY

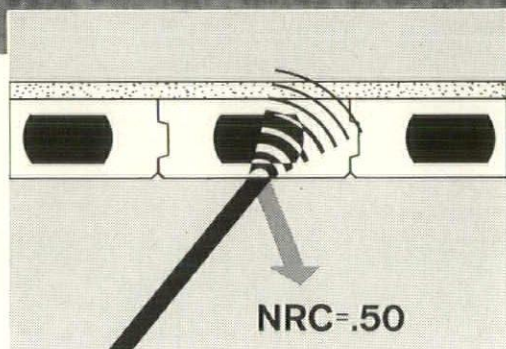
42

MONTHLY BULLETIN, MICHIGAN SOCIETY OF ARCHITECTS • APR. 1962 • 50c

**INCLUDING
NATIONAL
ARCHITECT**

REGIONAL COUNCIL OF THE AMERICAN INSTITUTE OF ARCHITECTS

Balanced Sound Control



Illustrated above are the effects of sound on Doxplank with concrete topping. The porous surface of the exposed Doxplank absorbs 50% of the sound, reflects the other half back in an even pattern. A sound transmission loss of approximately 50 decibels through the Doxplank eliminates noise transmission problems.

Acoustics within a room can be effectively 'balanced' using new Finished-Ceiling Doxplank. The natural, porous surface gives even sound distribution yet dampens reverberation. It provides the highest built-in coefficient of sound absorption available in long-span precast concrete floor and roof construction and is an excellent sound barrier.

Finished-Ceiling Doxplank also provides excellent thermal properties, natural finished-ceiling beauty, maximum fire resistance and a strong, lightweight concrete deck that can be installed in any season.

For full information on Doxplank, call or write your local manufacturer listed below.

Finished-Ceiling **DoxPlank**

Manufactured By



WM. MOORS
CONCRETE PRODUCTS, INC.
Established 1923

31475 UTICA ROAD, FRASER, MICHIGAN, PRescott 5-7000

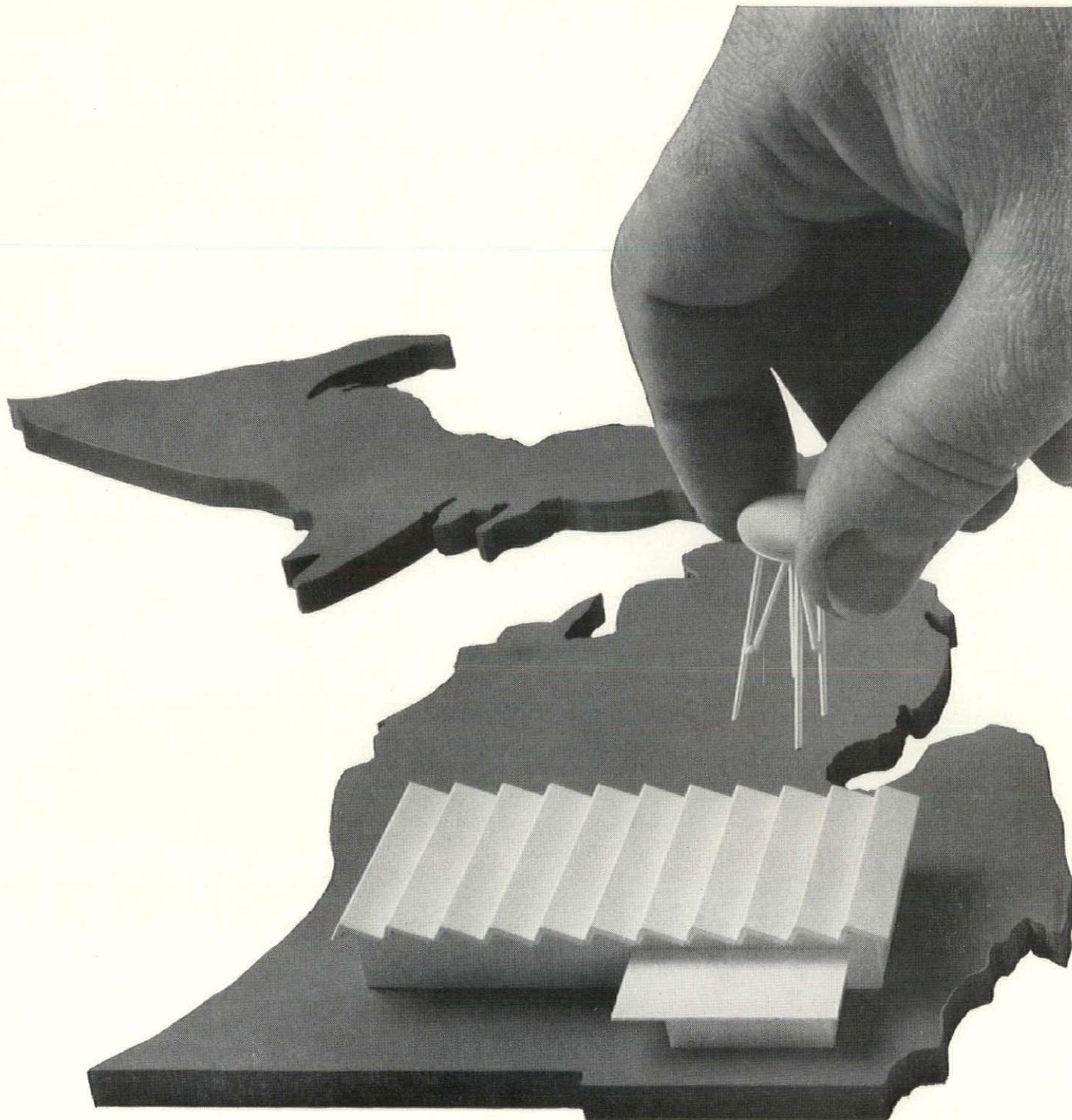
WESTERN
CONCRETE PRODUCTS COMPANY

510 5TH STREET, CADILLAC, MICHIGAN PRospect 5-3466

Manpower AND Horsepower



6440 John C. Lodge Expressway, Detroit 2, Mich., TRinity 3-5600

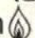


BUILDING IN MICHIGAN?

We'll work directly with you to help you solve your problems

As you may know, Gas is preferred for more than 25,000 industrial jobs because of its instant response, unmatched controllability and substantial savings. It's also a favorite for heating and air conditioning plants and offices. If you're building in Michigan, a Michigan Consolidated Gas Company representative will be glad to work with you and help you with your specifications.

Plan now to save with Gas! For details, write or phone our New Business Division at 415 Clifford, Detroit 26, Michigan—Woodward 5-8000.

Be modern
...for less...
with  GAS

MICHIGAN CONSOLIDATED
GAS COMPANY



HAZEL LEINWEBER In Her "Native" Costume

AIA-IES

Joint Meeting

Detroit Chapter, AIA and Illuminating Engineering Society, Michigan Section held a joint meeting at The Engineering Society of Detroit on February 13. Ernest J. Dellar, AIA and Frank E. North, IES were Co-Chairmen of the meeting.

In the auditorium Mr. Leinweber delighted his audience with excellent color slides he made during his recent two-year tour of duty in Korea with Smith, Hinchman & Grylls Associates, Inc., Architects and Engineers. Joe touched on other countries he and his wife Hazel had visited. He held his audience captivated through hundreds of slides and there was a lively question-and-answer period.



Lens-Art Photos

Speaker Joe

Detroit Chapter's Next Meeting

EDWARD LARRABEE BARNES, AIA, of New York City will be the speaker at the annual joint meeting of Detroit Chapter, AIA with its three student chapters—at U. of M., U. of D. and LIT—at Lawrence Institute of Technology, Saturday evening, April 28.

There will be a viewing of student work at 6:00 P.M., dinner will be served at 6:30 and the program will begin at 7:00. Ladies are especially invited.

Mr. Barnes, a native of Chicago graduated from Harvard University with a BS in 1938 and MS in 1941. He won the Sheldon Traveling Fellowship for 1941-42. From 1942 to 1946 he was a naval architect at Hunter Point Navy Yard, San Francisco. In 1947, in association with Henry Dreyfus, he designed an aluminum prefabricated house for Consolidated Vultee Aircraft Corp.

His completed work includes many houses in New York, Connecticut and Texas; offices and showrooms for twentieth Century Fund and Mercedes Benz;

Radio Station at Mt. Kisco; 3000-unit housing project at San Juan, Puerto Rico; Fresh Air Camp for N. Y. Harold Tribune; Pan American World Airways ticket offices and interiors of Douglas and Boeing jet planes.

Currently he is engaged on urban renewal projects for San Juan and Sacramento, Calif. (P/A top award in 1959); U. S. Consulate Compound, Tabriz, Iran, and many other important projects.

He has been Design Critic Lecturer at Pratt Institute and Yale University. In 1959 he won the Yale Medal for Distinction in the Arts, and the Brunner Prize from National Institute of Arts and Letters. In 1960 he received the Silver Medal Award from the Architectural League of New York.

His work has been published widely in leading architectural magazines and exhibited by the Museum of Modern Art.

Mr. Barnes' office consists of himself and from ten to 15 draftsmen, six of



EDWARD LARRABEE BARNES, AIA

whom are registered architects and/or structural engineers. He has associated with leading New York consulting Engineers, principally Severud-Elstad-Krueger, and Jaros, Baum & Bolles.

Monthly Bulletin, Michigan Society of Architects, Volume 36, No. 4

including National

Architect

MONTHLY BULLETIN

Michigan Society of Architects
120 Madison Ave., Detroit 26, Mich., WO 1-6700
Talmage C. Hughes, F.A.I.A., Editor & Publisher.
Edited and published under the direction of
Monthly Bulletin, Inc.: Gerald G. Diehl, James B.
Morison, Frederick G. Stickel, Directors.

The name "Monthly Bulletin, Michigan Society

of Architects" is owned by Monthly Bulletin, Inc., a subsidiary of the Michigan Society of Architects, a Michigan non-profit corporation. Otherwise owned by Talmage C. Hughes, F.A.I.A., founder (1926), editor and publisher, Executive Secretary of the Society and of the Detroit Chapter, The American Institute of Architects.

OFFICIAL PUBLICATION of Michigan Society of Architects, a Region of The American Institute of Architects: Charles H. MacMahon, Jr., President; Harvey C. Allison, Vice President; Bruce H. Smith, Secretary; George W. Sprau, Treasurer. Directors: Richard C. Frank, Herbert W. Johe, Philip J. Meathe, LaVern J. Nelsen, Charles A. Obryon, Frederick J. B. Sevald, Linn Smith, James E. Tomblinson, Robert L. Wold. Talmage C. Hughes, Executive Secretary.

OFFICIAL PUBLICATION 5 AIA Chapters—Detroit, Western Michigan, Mid Michigan, Saginaw Valley, Flint Area; 3 Builders & Traders Ex-

changes — Detroit, Grand Rapids, Lansing, Producers' Council, Michigan Chapter; Michigan Architectural Foundation; Women's Architectural League of Detroit.

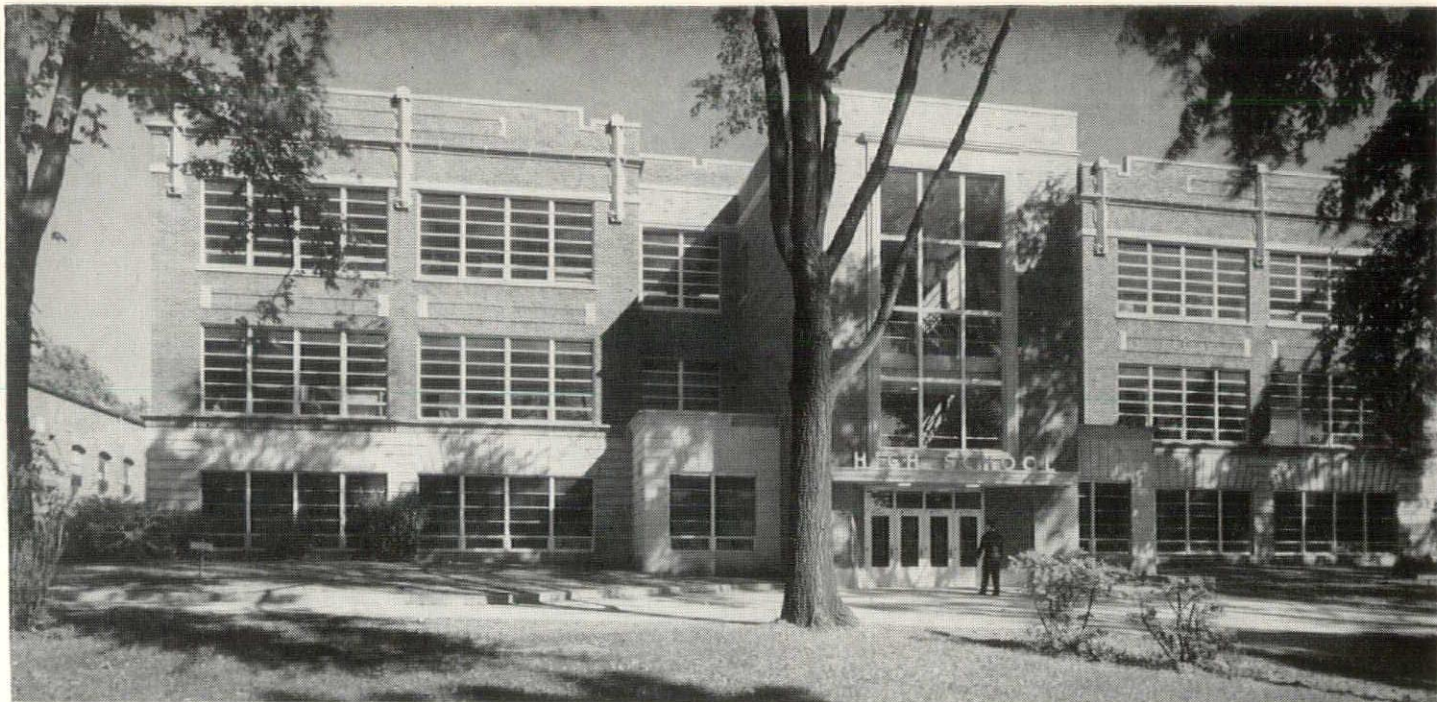
PERSONNEL—Theodore G. Seemeyer, Jr., Editorial and Advertising Director; Nick Demos, Circulation Manager; Ann Stacy, Secretary.

SUBSCRIPTION—\$4 per year (members \$2.00.) 50¢ per copy.

Listed in Standard Rate & Data Service. For further information, see Page 1.



MEMBER PUBLISHER ARCHITECTURAL COMPONENTS. 16 Official Publications of Components of The American Institute of Architects, in 26 key states. Advertising and listing in Standard Rate and Data Service. Headquarters, 120 Madison Ave., Detroit 26, Mich. WO 1-6700. Eastern Office, 18 E. 16th St., New York 22, N. Y. PLaza 5-3180.



WHEELER, BECKER & ASSOCIATES, INC. — ARCHITECTS AND ENGINEERS

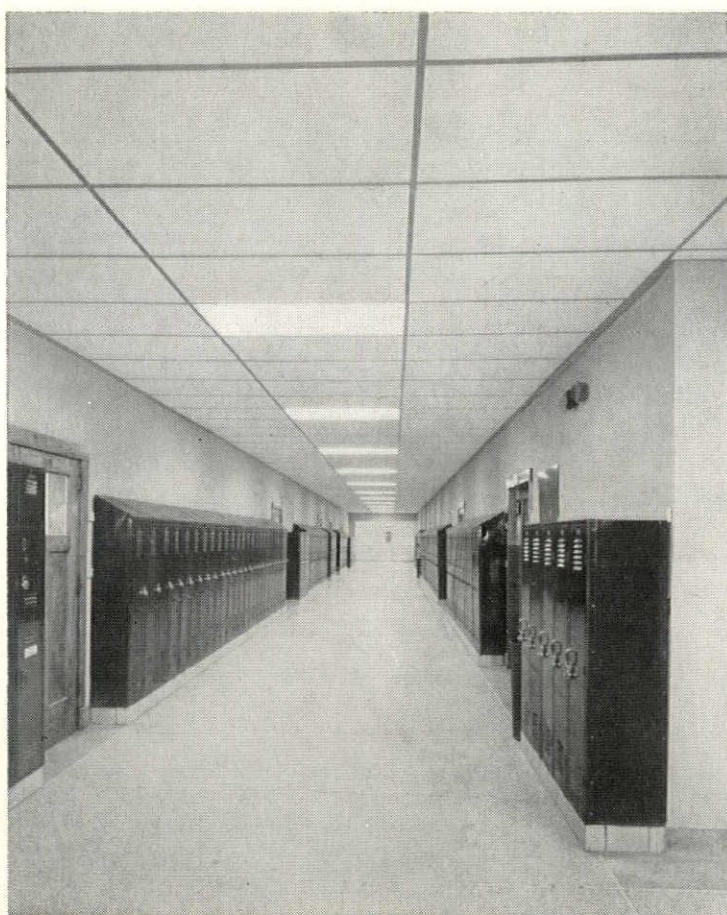
LENS-ART PHOTO

F. W. MARKWARD COMPANY

GENERAL CONTRACTORS FOR PLYMOUTH HIGH SCHOOL ALTERATION & ADDITION, PLYMOUTH, MICHIGAN

24015 MOUND ROAD, WARREN, MICHIGAN

PHONE: JEFFERSON 9-6040



Lens-Art Photo

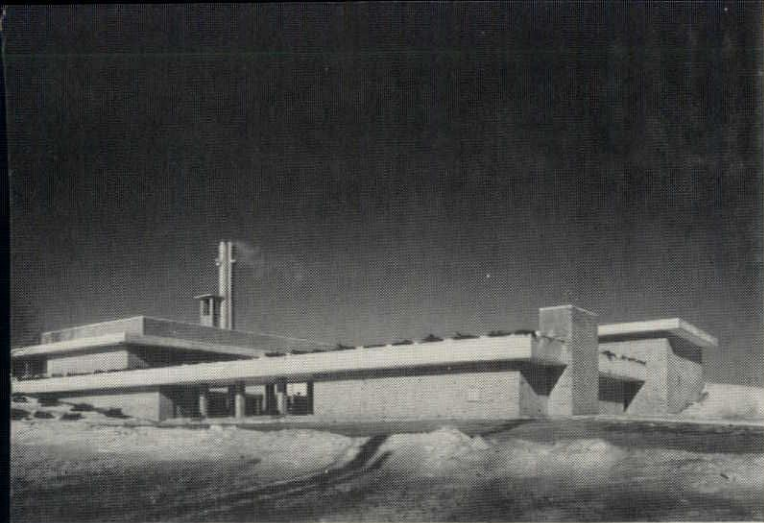
PLYMOUTH ELECTRICAL CONTRACTING CO.

**Electrical Contractors
For
Plymouth High School
Alteration and Addition
Plymouth, Michigan**

- COMMERCIAL
- INDUSTRIAL
- INSTITUTIONAL
WIRING

1471 GOLDSMITH AVENUE
PLYMOUTH, MICHIGAN
GLENVIEW 3-4310

WHEELER, BECKER & ASSOC., INC., ARCHITECTS & ENGINEERS



First Honor Award — Christ Episcopal Church, Adrian, Michigan, Alden B. Dow, Architect, Midland, Michigan



Honor Award — Miner S. Keeler Residence, East Grand Rapids, Michigan, Alden B. Dow, Architect, Midland, Michigan

Saginaw Valley Chapter, A.I.A.



EUGENT C. STARKE, AIA
Chapter Correspondent

The Saginaw Valley Chapter conducted the first of what is hoped will be an annual Design Award Program on Monday, February 19 at the regular Chapter meeting held at the Bancroft Hotel in Saginaw. Chapter Awards Committee Chairman, Robert W. Hammerschmidt, who so ably conducted the program reports as follows:

"The purpose of the program was to encourage, recognize, and publicize good design by members of the Chapter. Eligibility was limited to corporate firms and work completed during the past five years. Judging was based on worthiness for an award for excellence

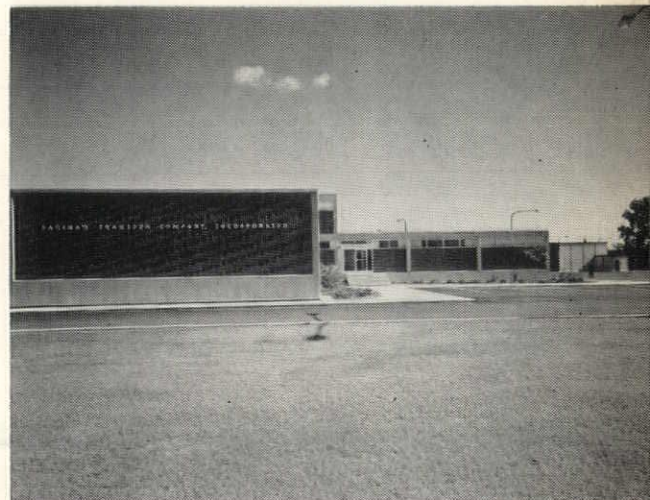
in architecture and the basis of solution of the problem presented. The jury consisted of Prof. William Muschenheim, AIA, Professor of Architecture, University of Michigan; Mr. Gerald Harburn, AIA, Flint, Michigan and Mr. Bernard Mayotte, AIA, Lansing, Michigan. Chapter Awards Committee was composed of Mr. Robert Hammerschmidt, AIA, Chairman, Midland, Michigan; Mr. Roger Simon, AIA, Bay City, Michigan; and Mr. Arthur Allen Nelson, AIA, Saginaw, Michigan.

The First Honor Award was given to the Christ Episcopal Church, Adrian, Michigan, designed by the office of Alden B. Dow, FAIA, Architect, Midland, Michigan. The Dow office also received an Honor Award for the Miner S. Keeler II Residence, East Grand Rapids, Michigan.

The office of Oeming and Waters, Architect, Saginaw, Michigan received an Honor Award for the Frankenmuth Mutual Office Building, Frankenmuth,

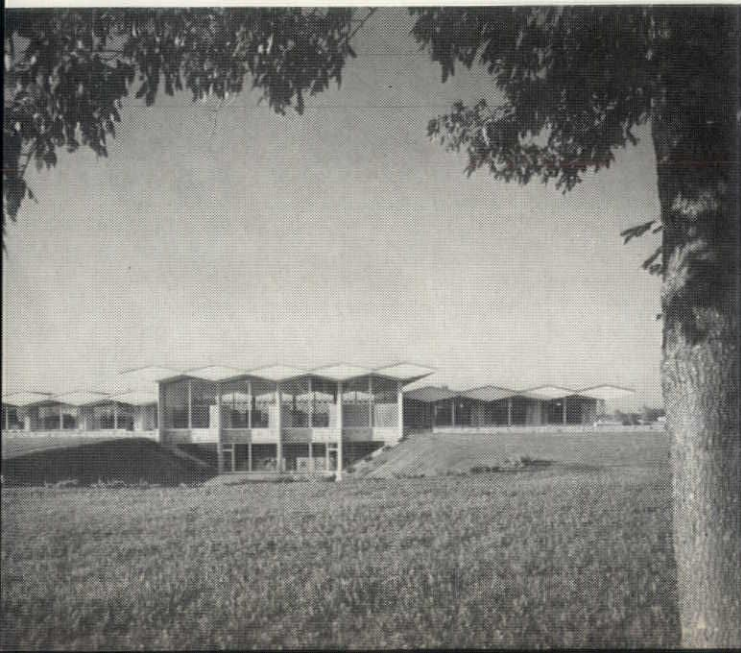
(Continued on Page 6)

Award of Merit—Saginaw Transfer Company, Saginaw, Michigan, Oeming & Waters, Architects, Saginaw, Michigan.

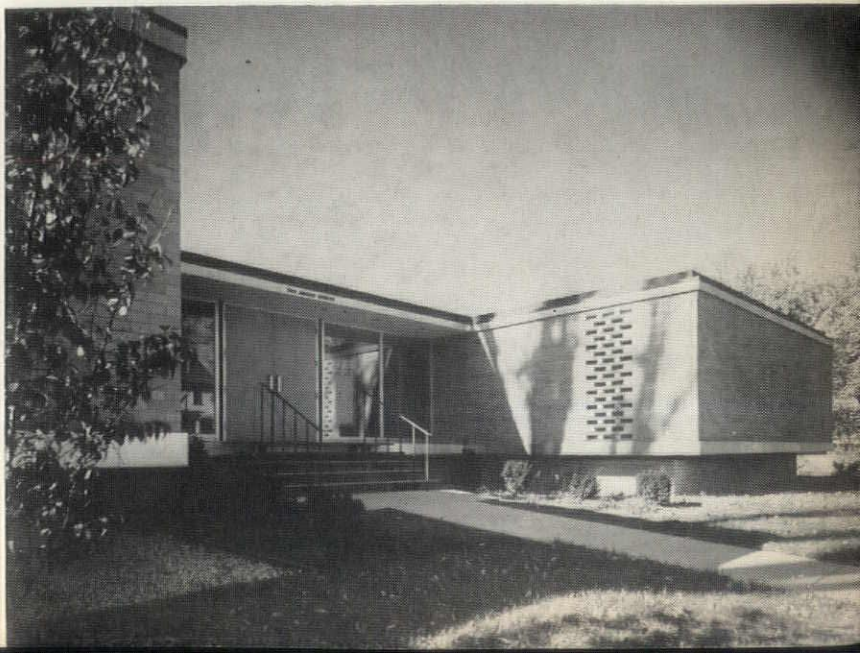


Baltazar Korab Photos

Award of Merit—Frankenmuth Mutual Building, Frankenmuth, Michigan, Oeming & Waters, Architects, Saginaw, Mich.



Award of Merit—Adams Street Medical Building, Saginaw, Michigan, Frederick E. Wigen, Architect, Saginaw, Michigan



FLINT AREA CHAPTER, A.I.A.

Official Publication of the Flint Area Chapter of The American Institute of Architects

HERMAN J. KLEIN, President, 708 Harrison Street, Flint 3, Mich.

ROBERT S. GAZALL, Vice President, 602 Marquette, Flint 4.

GERALD E. HARBURN, Secretary, G-4014 Beecher Road, Flint 4.

S. A. NURMI, Treasurer, 415 Lewis Street, Flint 3.

CLIFFORD E. GIBBS, Director, 5277 S. Dort Highway, Flint 7.

ROBERT G. MENGEL, Director, 2940 Clement Street, Flint 4.

JAMES E. TOMLINSON, MSA Director, 5227 S. Dort Highway, Flint 7.



By

**GERALD E.
HARBURN, AIA**

Chapter Secretary

Flint Area Chapter, AIA will meet on Wednesday, March 28, 1962, through the combined courtesies of the Royalite Company of Flint and Lightolier, with a program entitled, "The Human Dimension in Lighting—an exploration into the realm of

lighting: how it shapes our environment—its role in influencing human attitudes." The program will entail a very informative and educational discussion of lighting for various building types as well as a review of special displays and demonstrations. A diversified array of lighting devices of latest design and performance will highlight the program.

Cocktails 6:30, dinner 6:45, and program 7:30 p.m. Program Chairman, R. S. Gazall.

On Monday, April 16, 1962, the Annual Joint Meeting with the Michigan Society of Architects with the program featuring the District Representative of the State Fire Marshal's Office — Detective Clyde Marquardt.

President Herman J. Klein, of MacKenzie, Knuth & Klein, has appointed a special committee to review the fee schedule currently being used by the Flint Area Chapter and make recommendations to the Chapter. Special emphasis is being placed on educational projects and particularly those involving alterations. Appointed to the committee: Loren Kretchmar, chairman; Thomas Sedgewick, Clifford Gibbs, Robert

Gazall, S. A. Nurmi, Deane Truesdell and A. Charles Jones.

On Friday, February 23, 1962, a special meeting was held at the University of Michigan Extension Service in Flint, to discuss a petition from the Executive Committee of the Flint Area Chapter, AIA, requesting a continuing series of courses to promote and maintain basic design and academic fundamentals in the field of architecture on a local basis and through the Extension Program as an assistance to the FAC-AIA Architect-in-Training Program. In attendance were Professor Walter Sanders, Chairman of the Department of Architecture, University of Michigan, Mr. Ardell A. Henry, Supervisor, University of Michigan Extension Service in Flint, Mr. Mike Church, University of Michigan Extension Service in Ann Arbor, Herman Klein, Robert Gazall, Marcus Reed, and Gerald Harburn. The various requirements were discussed and thru the efforts of the FAC-AIA Committee on Education, a survey will be made in Flint, Lansing and the Saginaw Valley as a prerequisite to further action by the University of Michigan.

Saginaw Valley Chapter

(Continued from Page 5)

Michigan, and an Award of Merit for the Saginaw Transfer Terminal, Saginaw, Michigan.

An Award of Merit was presented to the Office of Frederick E. Wigen, Architect, Leslie Tincknell, Associate Architect, for the design of the Adams Street Medical Building, Saginaw, Michigan.

The excellent participation and high standard of quality of the entries made the Chapter feel the first Chapter Architectural Honor Awards was a highly successful program. All the entries have been placed in the capable hands of the Chapter Public Relations Committee for a period of one year."

Attendance was somewhat curtailed by another of the seasons miserable snow storms, nevertheless 30 Chapter members and guests viewed the submissions and heard Jurist Harburn's commentary and analysis of the jury's decision. An added feature to the regular program was the slide presentation by Mr. Charles Breed, Faculty Member of Delta College. Mr. Breed's subject, "Michigan the Beautiful" or "Blight of Outdoor Advertising" is tremendously impressive. His presentation of the con-

trast between the beautiful roadside scenery to be found in foreign countries, and the ugliness that lines the highways of our own state, leaves one disconcerted and dismayed. The point is further established when Mr. Breed is able to show a few spots along Michigan's highways that are as yet untouched with the mess of advertising that is everywhere and to which we have apparently grown so accustomed that we no longer see it except by contrast.

Mr. Breed's crusade to keep Michigan beautiful has our unqualified support. It is our understanding that this presentation is available to any interested group.

The forthcoming Chapter meeting to be held March 19, 1962 at Midland, will have as its program Mr. Alden B. Dow, FAIA, who will present the particulars of his recent trip to Europe.

TALIESIN WEST is threatened with the prospect of having four new sets of power transmission towers and lines; one by the U.S. Bureau of Reclamation, Department of the Interior, and three by the Arizona Public Service Co., built near its property.

At least one of these towers is to be 122 feet tall, holding eight wires, con-

struction to begin in April, 1962. These towers will parallel an existing line through Paradise Valley within 300 feet of the beautiful and historic home of the Frank Lloyd Wright Foundation, West.

Says Mr. John Amarantides, of Taliesen West: "your help is urgently needed to prevent this flagrant desecration of an internationally recognized architectural master work. Letters to those listed below will most effectively concentrate the public opinion necessary to halt this proposal.

"Editor, Arizona Republic, 120 E. Van Buren, Phoenix, Ariz.; Senator Carl Hayden, Washington, D.C.; Secretary Stewart Udall, Dept. of the Interior, Washington, D.C.; Editor, Arizona Journal, 2801 Washington St., Phoenix, Ariz.; Senator Barry Goldwater, Washington, D.C.; Hon. John J. Rhodes, House Office Bldg., Washington, D.C."

ARCHITECTURAL DRAFTSMEN

We wish to employ a few men of two to four year's experience in Architectural work. Send your qualifications to H. C. Allison, AIA, Alden B. Dow, Inc. 315 Post Street, Midland, Michigan



Grace Methodist Church—Valley Stream, N. Y.

Architect: Frederic P. Wiedersum Associates,
Architects-Engineers, Valley Stream, N. Y.

General Contractor: Willart Associates, Inc., East Rockaway, N. Y.

Masonry Contractor: Sorrentino Contractors, Inc., Inwood, N. Y.

Tebco Face Brick Supplied by:
Andrew Miles Stone Co., Lynbrook, N. Y.

Tebco Face Brick

NOW... 37 Color Combinations! 4 Textures!

The outstanding jobs are going Tebco! And for good reason. No matter what type of building—municipal, commercial, industrial, residential—Tebco Face Brick offers limitless design possibilities. Evans' big million-brick-a-week production assures fast, depend-

able delivery of the colors, sizes, and styles you need. For lasting beauty that never loses its appeal, design and build with Tebco. It meets all ASTM and FS standards. Write for new full-color Tebco Catalog.

Tangerine Blend, Standard, 45 K.



THE EVANS BRICK COMPANY

General Offices: Uhrichsville, Ohio • Telephone: WALnut 2-4210
Sales Offices: Cleveland, Ohio • Columbus, Ohio • Pittsburgh, Pa. • Detroit, Mich.
Bay City, Mich. • Fairmont, W. Va. • Toledo, Ohio • Philadelphia, Pa.

One of the nation's largest producers of Clay Pipe. Clay Flue Lining, Wall Coping, Plastic Pipe and related construction materials, with over 50 years of faster, friendlier service.

SAVE YOUR TIME FOR DESIGN

Create Your Brick With The Design In Mind

YOUR BRICK IS AVAILABLE WITH TODAY'S ADVANCED
TECHNOLOGY IN THE FIELD OF CERAMIC ENGINEERING

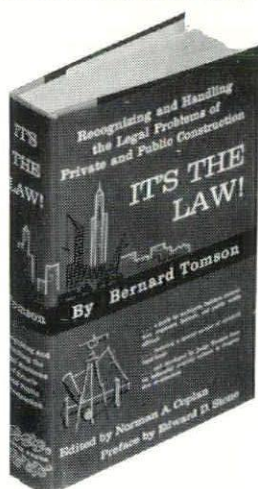
Challenge Us To Sample Your Brick Design In
Color and Texture With a Postcard TODAY

LINCOLN BRICK CO.

1420 Lake Drive S. E. - GL. 6-1696

Grand Rapids, Michigan

MICHIGAN'S LARGEST DISTRIBUTOR OF CLAY PRODUCTS



YOUR COLLEAGUES URGE YOU TO BUY THIS BOOK

"Mandatory for professionals in the arts of building, for government officials, and others who embark on the complexities of building projects."

Edward Durrell Stone

"Knowledgeable and useful . . . of signal importance. Can save money, time and prevent anguish."

*Dean Olindo Grossi,
Pratt Institute*

"When problems of law and architecture become important, the one person who comes to mind is Bernard Tomson. It is a great benefit to the profession that a new Tomson book has appeared."

*Thomas H. Creighton,
Progressive Architecture*

"I recommend it highly . . . The section on new 'Architect-Owner Contracts' alone will pay for the book many times over in a short period of time."

— Robert E. Alexander, F.A.I.A., Los Angeles, California

That's a typical comment about Bernard Tomson's new book,

"IT'S THE LAW: Recognizing and Handling the Legal Problems of Private and Public Construction"

Here's a book guaranteed to "save money and prevent anguish" . . . a highly-praised volume written to show you how to alert yourself to . . . avoid . . . or handle the ever-increasing legal problems in your field.

Featuring a special section of standard legal forms with recommended additions and revisions, this 436-page handbook deals with all the legal complexities of your profession in clear, non-technical language. It literally answers hundreds of questions that can mean the difference between a smooth, easy operation—and intolerable loss of money, time, and reputation.

Builders, engineers, contractors, architects, lawyers, and public works officials will find this book of equal use. Your rights and liabilities . . . the statutes regulating your activities . . . the

employment relation in a construction project . . . restrictions on use of property . . . the organization and business problems of architectural, engineering and construction firms—these are some of the subjects to which Judge Tomson gives major attention.

Judge Tomson—as an attorney who for 25 years specialized in real estate and construction problems, as a columnist for a national architectural magazine, as a professor of architectural law at a leading graduate school, and as a frequent leader of seminars for the AIA—is uniquely qualified to have written this book.

IT'S THE LAW will be one of your most-used reference volumes. Do not fail to write for your copy today. Only \$7.50—with refund guaranteed if you are not completely satisfied.

SPECIAL FEATURES

Special section of forms . . . index of problems, cases, decisions . . . preface by Edward D. Stone . . . 6 x 9 in size, 436 pages . . . five major parts, from regulations on practice to zoning . . . money-back guarantee to all purchasers!

MONTHLY BULLETIN, MSA 120 Madison Ave., Detroit 26

Please send _____ copy (copies) of Bernard Tomson's IT'S THE LAW at \$7.50 each to:

Name _____

Company _____

Address _____

City and State _____

MSA

MICHIGAN ITEMS

Linn Smith, FAIA



LINN SMITH, of Birmingham, Michigan, has been elected a Fellow of The American Institute of Architects, it is announced by the Jury of Fellows of The AIA. Of the 34 elected, Mr. Smith was the only one from Michigan. He was elected for Design and Service to The Institute.

At the AIA Convention, May 7-11, 1962, Linn Smith's three-year term as Regional Director of The Institute will expire. When he began it was the Great Lakes Region, now it is the Michigan Region.

Linn Smith, a native of Flint, Michigan, was born December 15, 1917. He is a graduate of the University of Michigan, College of Architecture and Design class of 1942. He practiced with Maynard Lyndon, FAIA, with Eberle M. Smith, FAIA; with Tarapata & MacMahon, and since 1959 as Linn Smith Associates, Inc.

He has served as Director of the Michigan Society of Architects, and in 1953 he was elected President, the youngest in the Society's history.

He was registered in Michigan as an architect in 1947 and he is also registered by the National Council of Architectural Registration Boards.

THE PRODUCERS COUNCIL AND DETROIT EDISON CO. will co-sponsor a one-day seminar on electric heat for homes, commercial, institutional and industrial buildings this spring.

The meeting is scheduled for Wednesday, April 11, to be held at the Pick Fort Shelby Hotel. Detroit, attendance will be on a reservation basis only. Invitations will be mailed and reservations accepted at a later date.

The all-day session will be intensively paced so that as much information as possible on recent progress in the electric comfort conditioning of structures can be covered.

Not only will electric heat installations in Southeastern Michigan be covered, there will also be a discussion of Chicago's Marina City. It, too, will be electrically heated. Equipment—including integral lighting-heating fixtures and other sources—will be discussed by outstanding authorities in each respective equipment class.

According to H. R. Stevenson, Manager of Sales for The Detroit Edison Co., the seminar is intended to be factual and objective so that architects, consulting engineers and specification writers can gain as much knowledge as possible of

the current status and future trends of electric heat.

THE METALLURGICAL SOCIETY OF THE AMERICAN INSTITUTE OF MINING, METALLURGICAL, AND PETROLEUM ENGINEERS announce the Forty-fifth Conference of the National Open Hearth Steel Committee, Blast Furnace, Coke Oven and Raw Materials Committee.

The Conference will be held in the Sheraton-Cadillac Hotel, Detroit, April 9-11. The conference will feature an "International Symposium on Oxygen Steel-making."

Many foreign authors and speakers will participate in the meeting. Architects are invited to attend. — H. W. CLARK, LU. 1-4600, Ext. 3017



RALPH R. CALDER, ARCHITECT AND ASSOCIATES

LENS-ART PHOTO

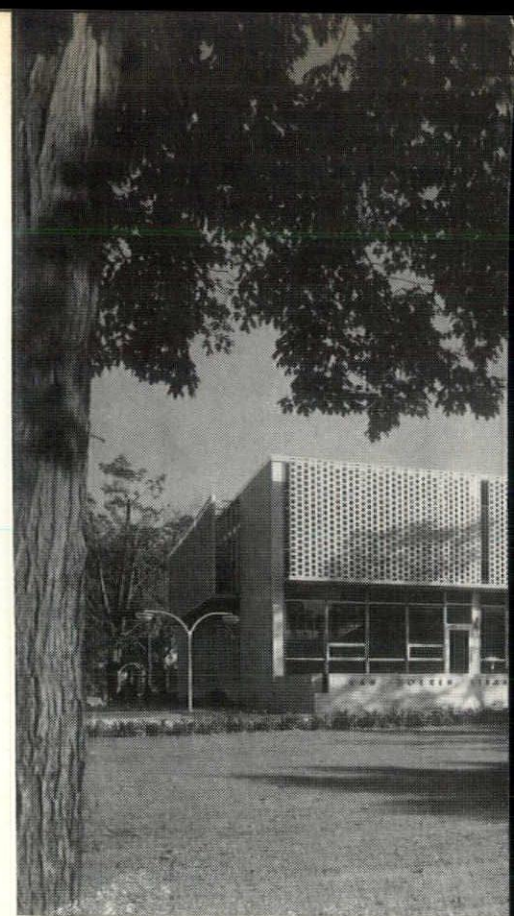
CURTAIN WALL

Van Zoeren Library, Hope College, Holland, Michigan
BY

MODU-WALL, INC.

5575 North Riverview Drive, Parchment, Michigan

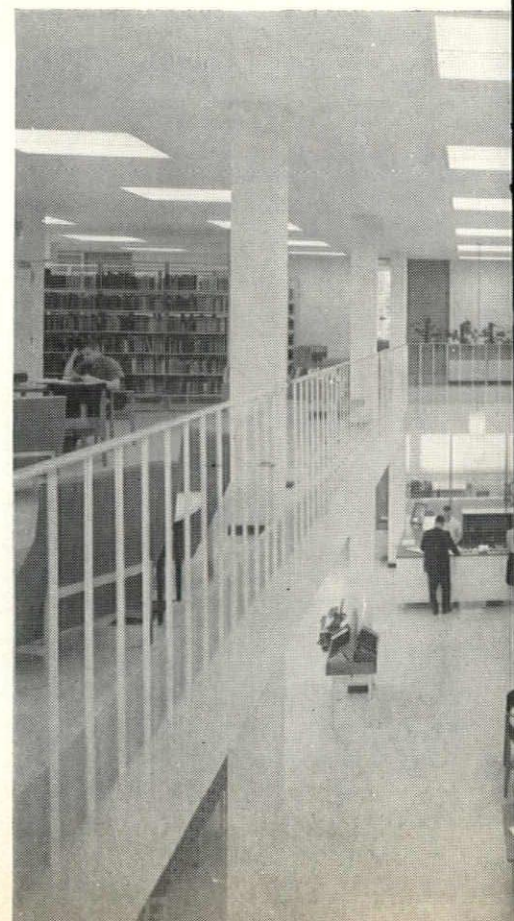
• Flreside 9-6626



VAN ZOERE
HOPE COLLEGE

RALPH R. CALDER
DETROIT

ALL PHOTOS BY LENS-ART





I B R A R Y
HOLLAND, MICHIGAN

CHITECT & ASSOCIATES
M I C H I G A N



TO THE POINT

SOME STEPS IN TIME SAVE MORE THAN NINE

We're Going To Needle a few of those people who have serious misconceptions on fire doors with U/L labels. Fire doors are not installed to get by a local building code. And even if a particular opening does not technically require labeled fire doors, or cannot carry the U/L label because of frames or hardware arrangements, it still may be extremely important to install a labeled fire door.

Why? Because the purpose behind all U/L fire testing and labeling is fire safety and life safety. And architects should look upon a labeled fire door as a *safer* door, protecting their building and its inhabitants.

The installation of a labeled fire door in public buildings—schools, hospitals, institutions, office buildings—is a small step, but the savings can be phenomenal, especially in lives.

* * *

The World's Largest Atomic Dome is being built by Overly for Brookhaven Laboratories, New York City. The new Brookhaven dome will use Overly Batten "B" type construction, will be completely fabricated in stainless steel and will measure 176 feet in diameter. Probably no more exacting hemispheric structure is produced than this, where tolerances must be microscopically accurate.

* * *

Did You Realize that Overly is one of the nation's foremost manufacturers of convector enclosures? Overly crafts six different basic designs, styled to suit the architecture of every type of building. For more information, write for the new Overly Convector Enclosures Catalog.

Overly

Greensburg, Pennsylvania • Los Angeles 39, California

Overly Representatives In Your Area:

JOHN W. DAVIES

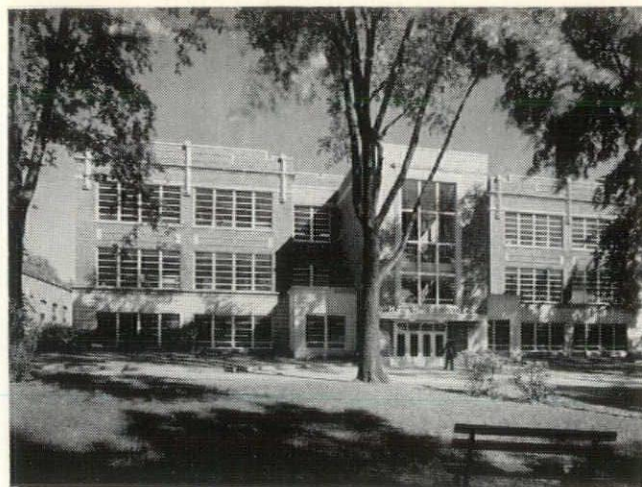
16901 Schoolcraft Ave., Detroit 27, Michigan

C. T. DEHAAS COMPANY

Kaufman Building, Marquette, Michigan

MICHIGAN CERTIFIED CONCRETE PRODUCTS

1235 Hoyt Street, Grand Rapids, Michigan



WHEELER, BECKER & ASSOC., INC. — ARCHITECTS AND ENGINEERS

NULITE CO.

FURNISHED AND ERECTED
ALUMINUM WINDOWS
FOR
PLYMOUTH HIGH SCHOOL
ALTERATION AND ADDITION
PLYMOUTH, MICHIGAN

10460 W. NINE MILE RD., OAK PARK 37, MICH. • LI. 8-7770

ARCHITECTS . . .



do you have
a doctor client who
plans to build
a clinic?

Our long term and construction financing
can help him.

Write or phone for complete information.

All loans are arranged in a prompt
and confidential manner

FORT WAYNE MORTGAGE CO.

2nd FLOOR FIRST NATIONAL BLDG.
WO 3-6175 • DETROIT, MICHIGAN • ESTABLISHED 1938

ARCHITECTONICS

Official Publication of the Western Michigan Chapter of The American Institute of Architects

ROBERT C. SMITH, President, 1704 Whites Road, Kalamazoo, Mich.

ROBERT L. WOLD, Vice President, 330 State Street, Grand Rapids 2.

ADRIAN R. NOORDHOEK, Secretary, 1825 Greenlawn, Kalamazoo.

PETER R. VAN PUTTEN, Treasurer, 924 Grandville, SW, Grand Rapids 9.

GEORGE N. WILLIAMS, Director, 616 Post Street, Battle Creek.

BERNARD J. DEVRIES, Director, 613 Hackley Union National Bank Building, Muskegon.

GEORGE W. SPRAU, MSA Director, 410 W. Walnut Street, Kalamazoo.



By

JAY H.

VOLKERS, AIA

Chapter Correspondent

Embarking on a new year, the executive committee of the West Michigan Chapter has announced the appointment of chairmen and committee members for 1962. Members of the 1962 executive committee are: Robert Smith of Kalamazoo, Robert Wold and Peter Van Putten of Grand Rapids, Adrian Noordhoek of Kalamazoo, George N. Williams of Battle Creek, Claude Sampson of Jackson and Bernard De Vries of Muskegon.

In announcing the committee appointments, President Robert Smith urged each committee to intensify its activities during the coming year. He reminded the members that an AIA Chapter can be only as strong and effective as its committees and individual members are willing to make it.

The chapter committees are as links in a chain which drive the sprocket of a bicycle. Unless all the links are strong and effective . . . the chain will not engage and the vehicle will stand still. If we as AIA members are going to be satisfied merely with paying our dues . . . we are wasting our money. Our professional organization needs our time, our interest, and our ingenuity as well, if it is to effectively realize its goals and ambitions.

Members of the 1962 West Michigan Chapter committees are as follows, the first-named being chairman:

MEMBERSHIP—Phillip C. Haughey, Carter B. Strong, Alfred K. Bulthuis, John E. Knapp.

PROGRAM—Bruce N. McMillen, David E. Post Co-Chairman, John Vandermeiden, Irving G. Hunsberger, James B. Nachteggall, Ruark K. Vanderploeg, Donald W. Stearns, Richard E. Wiggins, Thomas W. Bombassei, Roger G. Soeters.

CONSTRUCTION INDUSTRY, AIA - AGC—Carl C. F. Kressbach, Joseph T. Daverman, Clarence Roessler.

SCHOOLS AND EDUCATIONAL FACILITIES—Richard C. Lane, Michael J. Koteles, Gerald E. Diekema, Paul A. Hazelton.

EDUCATION AND REGISTRATION—George B. Savage, John H. Burgess, Jerry Fair, Eugene J. Harmsen.

PRACTICE—Benjamin E. Rine, Chase H. Black, James K. Haveman, Richard Prince, Jr., Jack L. Boller, Robert A. Reid, Kenneth Bartholomew.

PUBLIC RELATIONS—Jay H. Volkert, Fred Walters, Jr., Anthony Paparella, Richard Raymer, Peter J. Futymoski, Louis J. Merdzinski, Alex A. Jakubowski.

HOSPITALS AND HEALTH—Peter Vanderlaan, Herbert G. Daverman, Howard W. Kammeraad, Harford Field.

HISTORIC BUILDINGS—Charles M. Norton, Walter S. Hanson, Warren L. Rindge.

APELSCOR—Claude D. Sampson, Thomas L. Tanner, John Dabbert.

LAKE MICHIGAN REGIONAL PLANNING—Edward R. Duffield, Bernard J. DeVries, Kenneth C. Welsh, Donald J. McGrath, Carl H. Zilmer, James J. Parent.

DISTRICT STUDY (Special Project)—Carl H. Zilmer, George W. Sprau, Edward R. Duffield, George N. Williams, F. Gordon Cornwell, Bernard J. DeVries, Claude D. Sampson.

BY-LAWS—Gordon A. Belson, Joseph T. Daverman, David E. Post.

Gordon Belson, AIA In Nigeria

Word from Gordon A. Belson, AIA, Battle Creek architect, relates some of his reactions to the country where he is on a brief trip to start a continuing education center construction project for the University of Nigeria at Nsukka, Nigeria.

Similar to the Kellogg Center at Michigan State University, the project is under contract to the firm of Lewis J. Sarvis, architect, Gordon A. Belson and Ruard A. Vanderploeg, associate architects. The new center will be the gift of the U. S. government.

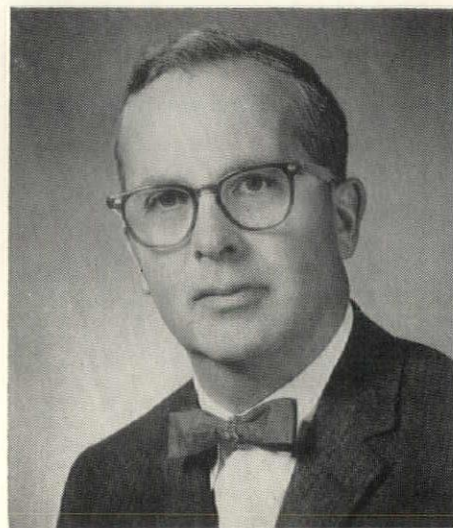
Mr. Belson left this country January 19, flying by Pan-American jet to Dakar, French West Africa, thence to Lagos, Nigeria, which he found hot and humid and the sky hazy with dust from the Sahara desert.

"This is no Miami Beach," he reported. "The Europeans and Americans stay to themselves, do not walk on the streets, have cars, mostly compacts." Nigerian officials have larger cars and everybody drives on the left and "like mad."

"The natives," he said, "are clean, friendly and appear well fed. Life here is a great study in contrasts."

The electric light and power poles have barbed wire at the base to keep the natives from climbing the poles and cutting wire for use in making things.

On January 25 he located at the guest house at the University of Nigeria at Nsukka after a three-hour flight from Lagos. This, he said, is in the grass country, out of the rain forest and



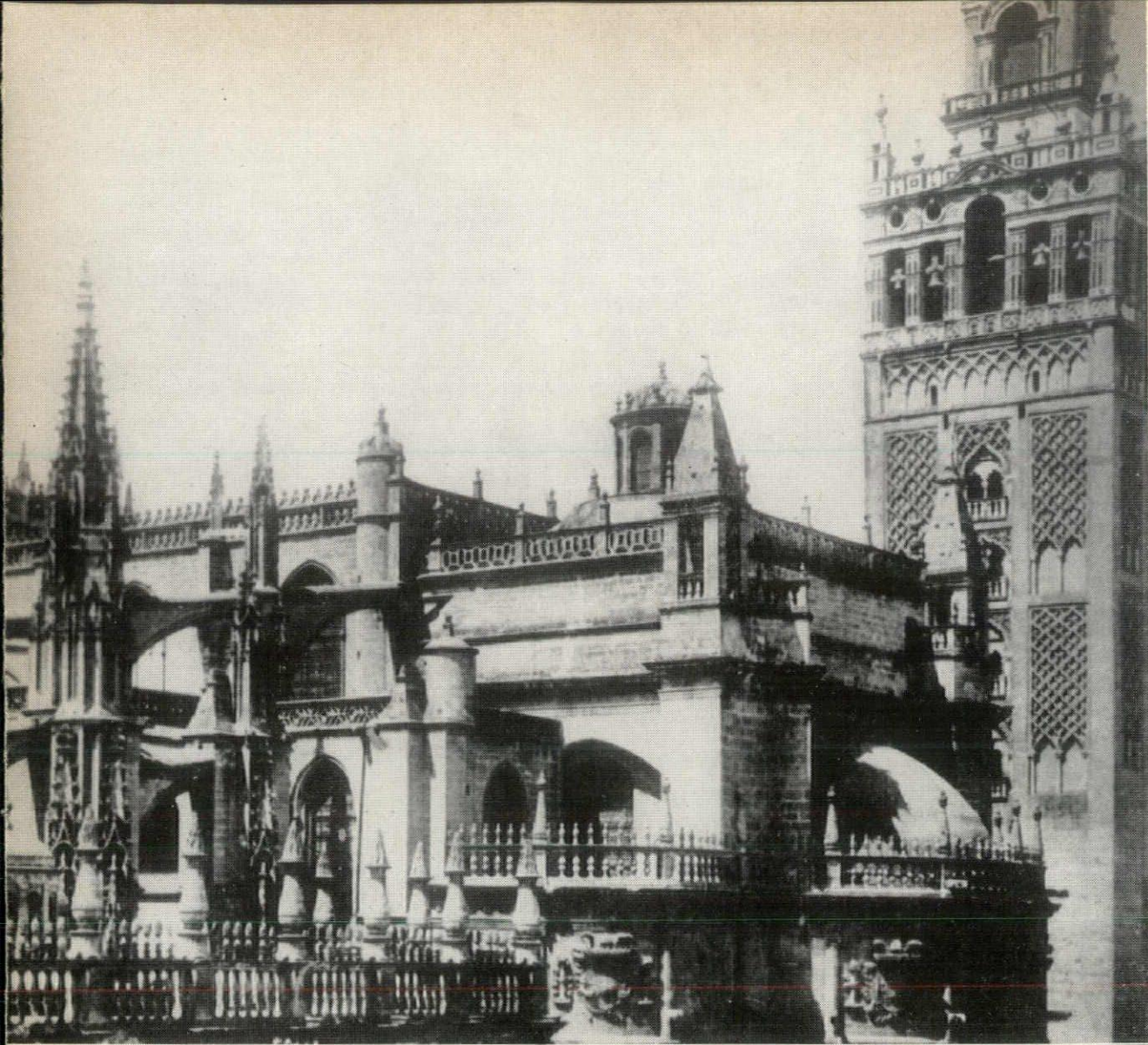
GORDON A. BELSON, AIA

quite arid at this season. The land of the Iba people, its natives appear better dressed and the cities and villages better organized than the slums around Lagos.

Attending a reception at the president's residence, given for a Michigan State University group, he reported that there were 20 Peace Corps people there as instructors and faculty assistants. There are about 200 Peace Corpsmen in Nigeria, "a very well adjusted group of people," and they could use many more. At the university he has been making the professional contacts needed to start planning for the new center. In Lagos he studied many reports on building and building conditions in Nigeria.

Housing in Nsukka, he said, was so expensive that one must pay \$5,000 to \$9,000 in advance for five years' rent. There is a Canadian trade fair in progress. The country is dominated by English products; Italian, French and American to a lesser degree. The area has radio and television programs with American music and TV.

The university was built complete for 1,000 students in the last 18 months, practically with their bare hands. The only machinery is a bulldozer and small concrete mixer. All block work, wood work and iron work are done at the site, and "it is surprising that so much has been accomplished," Mr. Belson commented.



1

CATHEDRAL
1401-1510
Seville, Spain

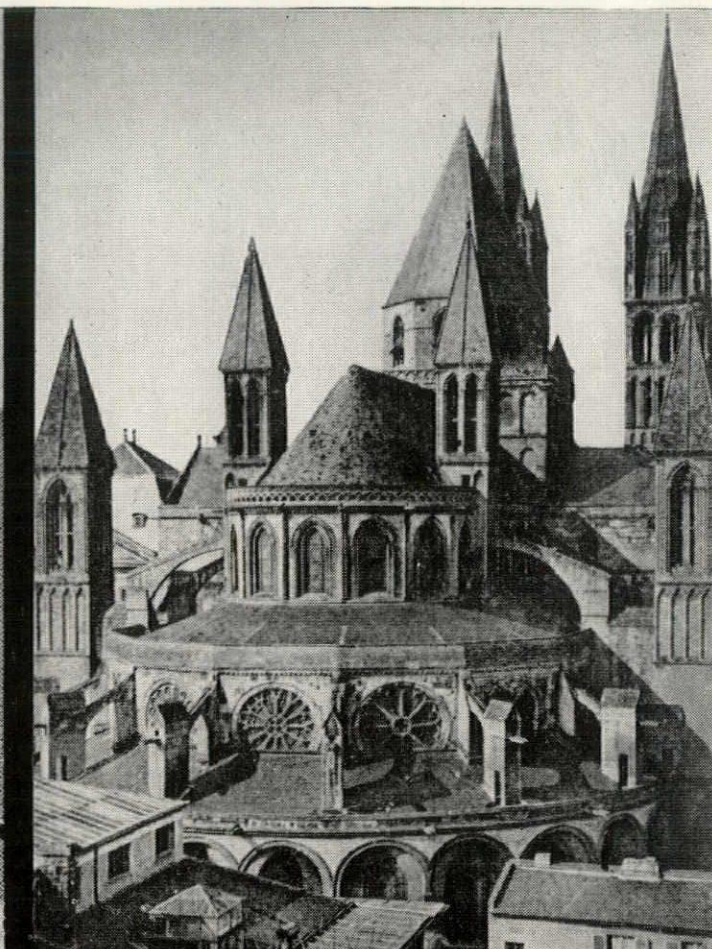
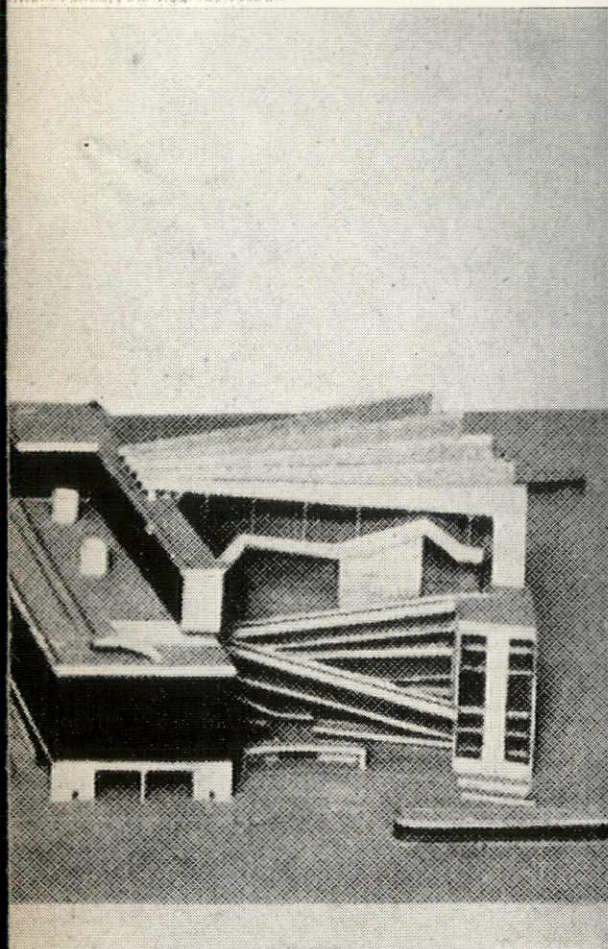
2

PALACE OF THE SOVIET
1931
Moscow, Russia
Le Corbusier

Arch

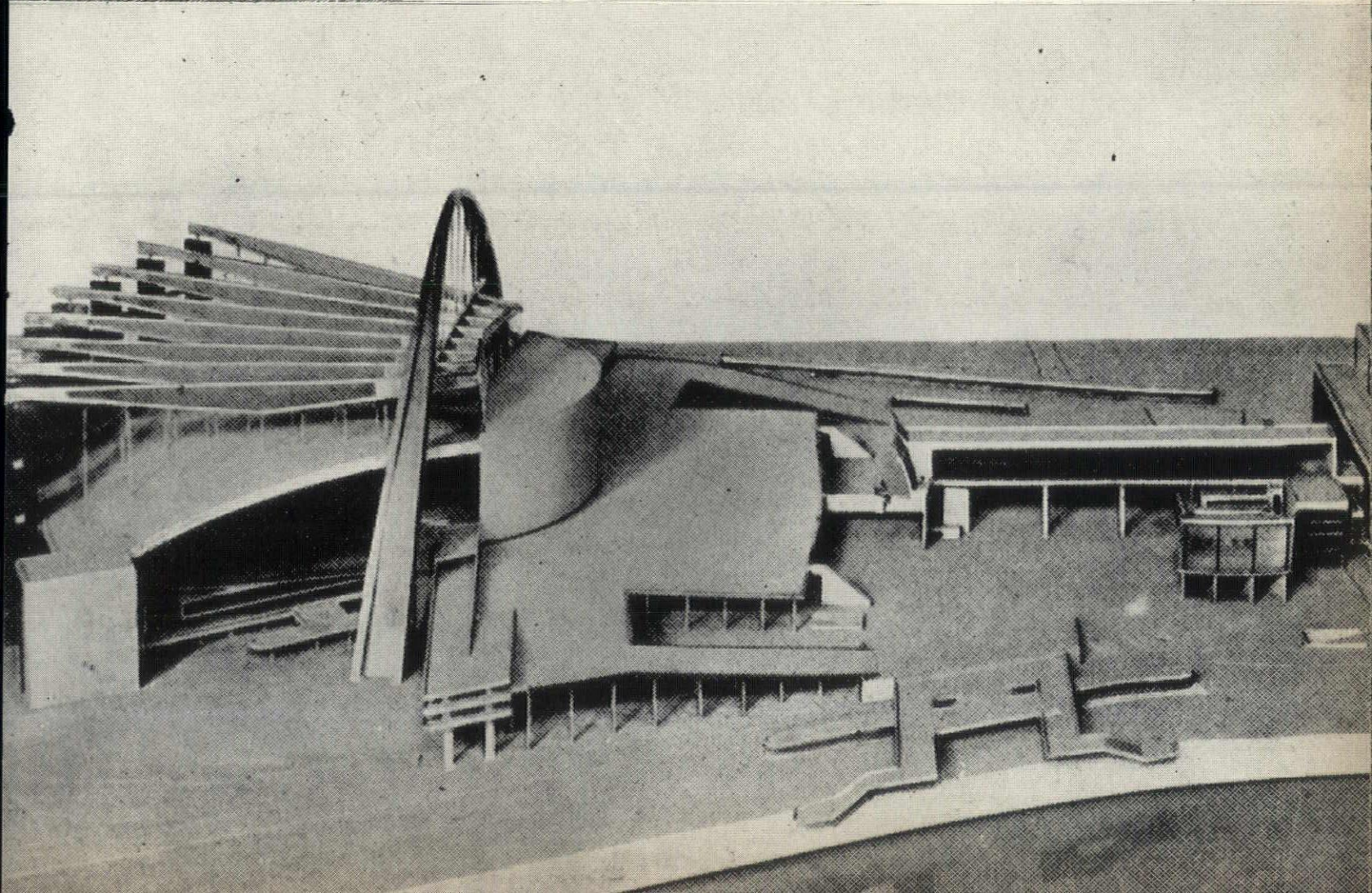
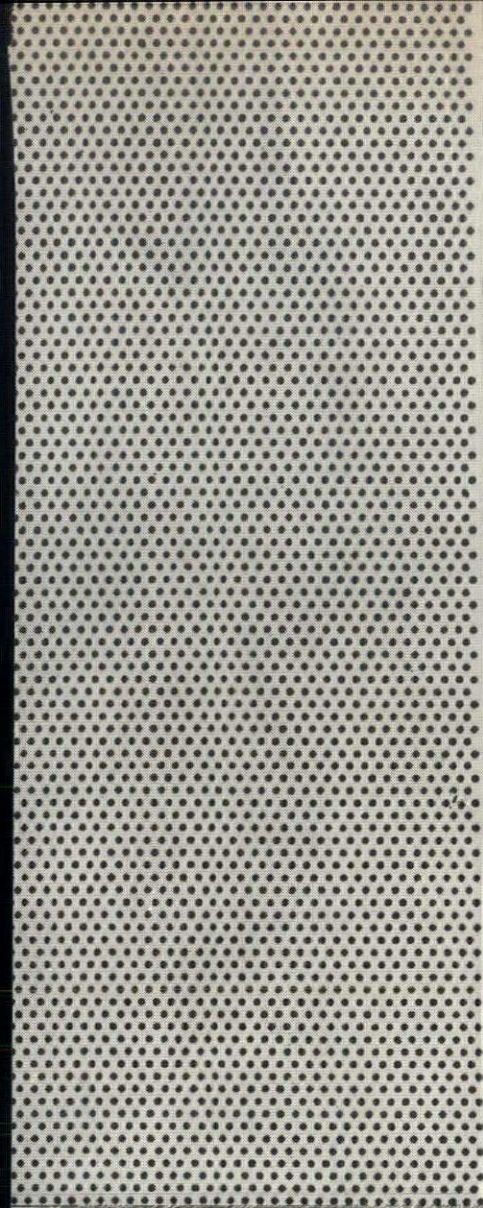
3

CHURCH ST. ETIENNE
1065
Caen, France



	1	
2		3

PLATE 5



ELEMENTS OF THE ART OF ARCHITECTURE SERIES A

PLATE 10

PORTICOS RELATING INTERIOR WITH EXTERIOR ILLUSTRATING AN ELEMENT OF GREEK HUMANISM

THE EARLIEST APPEARANCE IN HISTORY OF THE HUMANISTIC IDEAL OCCURRED IN GREECE AND IN ITS CRYSTALLIZED FORM CIRCA 400 B. C. IS CLEARLY EXPRESSED IN THE ARCHITECTURE OF THAT TIME. THERE WAS A DELIBERATE EFFORT TO DEVELOP A SYSTEM SCALED TO MAN AND HIS PLACE IN THE NATURAL ORDER AS WELL AS AN EMPHASIS ON THE CONCEPT OF RATIONALITY; ACCOMPANIED BY A CONCERN FOR ESTABLISHING LAWS OF HARMONY AND PROPORTION.

IN THE "AGE OF ENLIGHTENMENT" DURING THE 18TH AND 19TH CENTURIES RATIONALISM AGAIN MANIFESTED ITSELF IN A NEW TYPE OF CLASSICISM RECALLING THE CLARITY AND COMPARATIVE SIMPLICITY OF GREEK ANTIQUITY.

THIS BASIC ATTITUDE, A HERITAGE OF WESTERN CULTURE, IS MIRRORED IN SOME EXAMPLES OF OUR CONTEMPORARY ARCHITECTURE.

Photographs: Plate 10: 1—Dr. Julius Rosenthal art slide, Chicago; 2—Neue Photographische G.A.G. Berlin; 3—Wayne Andrews Photograph number 422; 4—C. Moore. Plate 56: 1—Linares, Seville; 2—Le Corbusier et Pierre Jeanneret, Editions H. Girsberger, Zurich; 3—Levy et Neurdein Reunis, Paris.

Congratulation Winners . . .

MSA . . . SMCAD Industry Fund DRAFTSMENS' COMPETITION

GRAND PRIZE

CHARLES SROCK JR.
w/ Giffels and Rossetti
26434 Clarita Avenue, Detroit 40, Mich.

FIRST PRIZES

Architectural
WILLIAM R. PFAENDTNER
w/ Harley, Ellington, Cowan and Stirton
35536 Strathcona Avenue
Mt. Clemens 20, Michigan

Mechanical
HARVEY T. HENDRICKS
w/ Theodore Rogvov—D. J. Zabner Co.
19741 Mohon Avenue
Southfield, Michigan

Structural
ROSS TAYLOR
w/ Albert Kahn & Associates
1528 Villa Maria Avenue
South Windsor, Ontario

Electrical
ROBERT B. TOWER
w/ F. E. Wigen Architects and Engineers
10016 North Michigan Avenue
Saginaw, Michigan

SECOND PRIZES

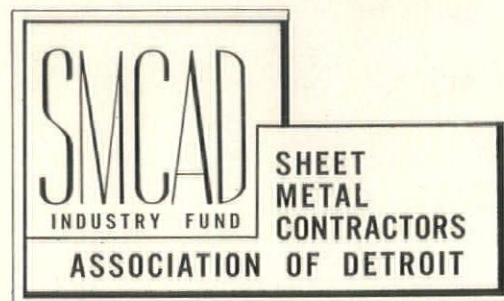
Architectural
A. MARTIN REDA
w/ Eero Saarinen & Associates
29237 Tesamer Court
Madison Heights Michigan

Mechanical
NEIL E. PERSINGER
w/ Linn Smith & Associates
21460 Sunnyview Avenue
Mt. Clemens, Michigan

Structural
FAUSTO M. DONASTORG
w/ Giffels and Rossetti
237 Massachusetts Avenue
Highland Park 3, Michigan

Electrical
FRANK J. MARTILOTTI
w/ Chas Agree—D. J. Zabner
15331 Stricker Avenue
East Detroit, Michigan

Sponsored by . . .



WILLIAM J. RETTENMIER
Executive Secretary

224 McKERCHEY BUILDING
2631 Woodward Ave., Detroit 1, Mich.

ARCHITECTS CONTRACTORS

Stevens provides quick delivery at reasonable prices on these top quality building materials

BRICK

Michigan's widest selection of brick. Large local stock.

SOLAR SCREENS

Glazed, Unglazed and Terra Cotta.

MASONRY SAW BLADES

A blade for every purpose. Saws for rental or sale.

ANTI-HYDRO

Waterproofing, floor hardening, dustproofing, silicone surfacing and concrete accelerating.

SURE KLEAN

For all types of masonry and stain removing.

SALT GLAZE

Brick size, tile size and partition.

CERAMIC STRUCTURAL GLAZED TILE

From leading manufacturers in all sizes and colors.

ACOUSTICAL TILE

Structural glazed in 5 x 12 and 8 x 16 units.

TERRA COTTA

In both Ceramic Veneer and Architectural. Robco Vitri-Neer.

QUARRY TILE

Wide variety of sizes and shapes. Also with abrasive surface, waxed and safety treads.

HOLLOW METAL DOORS, FRAMES AND HARDWARE

A hollow metal door for every purpose. New Stev-a-Dor package door unit including door, frame and hardware is immediately available from stock in a wide range of standard sizes.

SEWAGE UNDERDRAIN FILTER BOTTOM BLOCK

Glazed vitrified.

FLOOR BRICK

A full line—smooth, abrasive, acidproof, non-skid and other types.

CONCRETE ACCESSORIES

Full line includes wall ties, mesh reinforcement and other items.

CONCRETE COLUMN MOLDS

Round steel or fibre column molds, fibre shaft forms, drop heads, steel clamps.

METAL PARTITIONS

A complete line of metal toilet partitions in a variety of sizes and styles.

CALL, WRITE OR VISIT TODAY. BUILDING MATERIALS DEPARTMENT

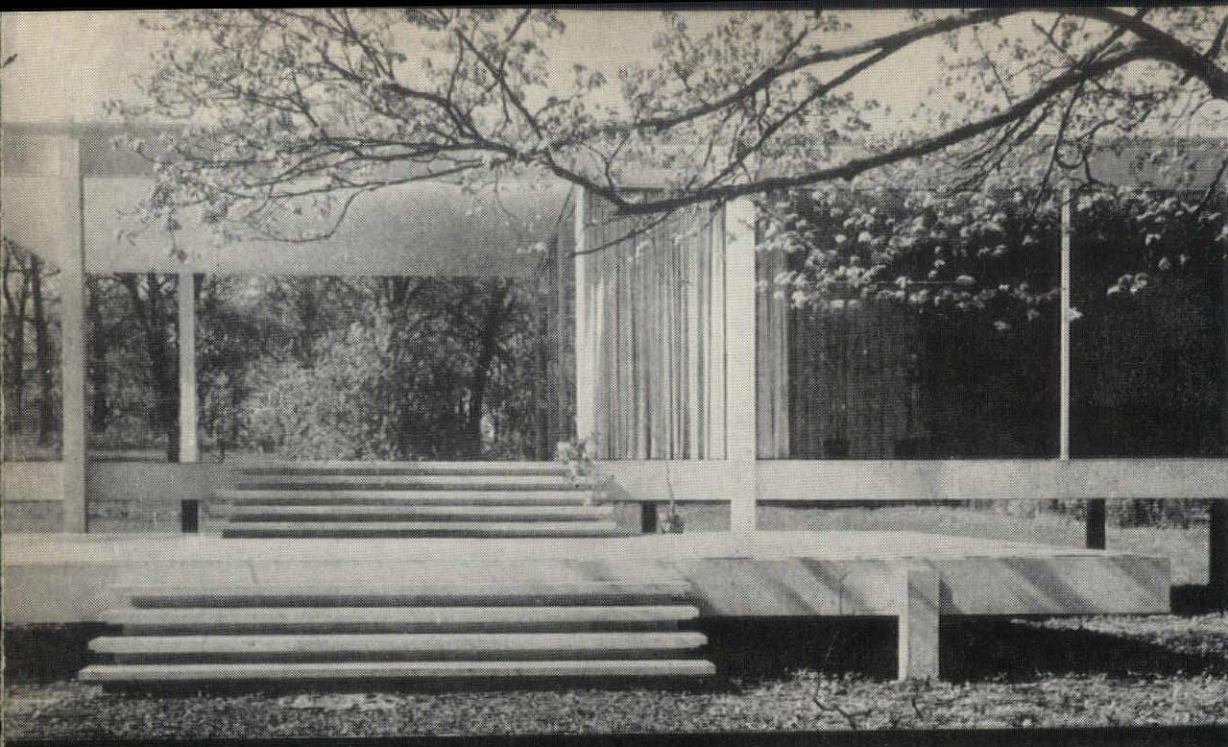
frederic b.

STEVENS, inc.

TAshmoo 5-0725

1800 18th STREET AT VERNOR HIGHWAY





1

FARNSWORTH HOUSE
1951

Plano, Illinois, U. S. A.
Mies Van Der Rohe,

Architect



2

ERECTHEION
C. 400 B. C.

Athens, Greece
Mnesicles,

Architect

3

"BREMO" COCKE HOUSE
1815

Fiuvanna Co., Va., U. S. A.
Thomas Jefferson,

Architect

4

TEMPLE OF NIKE APTEROS
427 B. C.

Athens, Greece
Callicrates,

Architect



1	1
2	3
	4

PLATE 10

UNIVERSAL ARCHITECTURAL QUALITIES EXEMPLIFIED IN VARIOUS HISTORICAL PERIODS OF WESTERN CULTURE — EXPRESSING BUT ALSO TRANSCENDING USE, TIME, TECHNOLOGY, CLIMATE AND A DIVERSITY OF SOCIAL AND ECONOMIC FACTORS PERTAINING IN EACH PERIOD

PLATE 56

EXPLODED BUILDING MASSES—EXPRESSING EACH ELEMENT SEPARATELY—EXEMPLIFYING ARCHITECTURAL DESIGN APPROACH CONTRARY TO THE CLASSICAL ONE

THE DESIGN PRINCIPLES OBTAINING IN THE MIDDLE AGES — COUPLED WITH A QUEST FOR THE INFINITE — WERE NOT FROZEN INTO A LIMITING SET OF RULES DEALING WITH CONCEPTS OF HARMONY AND PROPORTION. THE PHILOSOPHICAL EMPHASIS AT THE TIME WAS CONCERNED WITH A HIGHER SPIRITUAL ORDER ATTENDED BY A TENDENCY TOWARDS A REJECTION OF MATTER. IN ARCHITECTURE THIS OUTLOOK RESULTED IN A STRUGGLE TO DEMATERIALIZER BODILY STRUCTURE AND TO LAY EMPHASIS ON DIRECTIONAL ARRANGEMENTS IN BUILDINGS.

IN MEDIEVAL WORK THE DIRECTIONAL EMPHASIS WAS VERTICAL — INTERPRETED GENERALLY AS SYMBOLIZING A QUEST FOR A HIGHER TRUTH.

IN MODERN WORK THE HORIZONTAL AS WELL AS THE OMNIDIRECTIONAL IS STRESSED WHEN A DYNAMIC QUALITY IN A BUILDING DESIGN IS SOUGHT.

Plates 10 and 56 are two of a series of 80 plates prepared with the assistance of a grant from the Horace H. Rackham School of Graduate Studies, University of Michigan, by William Muschenheim, A.I.A., and assisted by Edward Hammerskjöld, A.I.A., both members of the Committee on Education of the Detroit Chapter of the American Institute of Architects. The Committee aims to acquaint the public at large about the significance of the Art of Architecture as an important element and expression of our culture. The plates are designed to serve as exhibition material and to be projected directly or in the form of slides to students, laymen, and interested professionals.



MID MICHIGAN CHAPTER AIA

CHARLES W. STRIEBY, Secretary, 2253 Hamilton Road, Okemos.

LEWIS L. FOWLER, Treasurer, 3404 Walker Street, Lansing 6.

RICHARD C. FRANK, Director of Chapter and of MSA, 2330 Kewanee Way, Okemos.

CLARENCE H. ROSA, Director, 1430 Lindberg Drive, Lansing 10.

HOWARD E. DEWOLF, Director, 167 Maple Drive, East Lansing.

WALTER M. LAITALA, Director, 600 Hollister Building, Lansing 8.

WILLIAM D. BLACK, President, 715 Stoddard Building, Lansing 23, Mich.

RICHARD H. STUCKMAN, Vice President, 3412 Schlee Street, Lansing 10.



By
J. WESLEY OLDS, AIA
Chapter Correspondent

MSA Lawyer Honored

Ted A. Swift, on January 25, 1962, was named Lansing's "Young Man of the Year" by the Junior Chamber of Commerce at a "Bosses' Night" dinner they held at the Consumers Power Company Auditorium.

Mr. Swift is affiliated with the Foster, Foster, Campbell and Lindemer law firm in Lansing and is representing the Michigan Society of Architects in its legal work regarding registration and legislation relating to architects.

Ted is not a member of the Junior Chamber, even though he was so honored by them.

In the photograph above, he is being interviewed on "Today in Michigan" over Station WILX out of Jackson. The hostess of the show is Mrs. J. Wesley Olds, known as Winifred Olds throughout the Channel 10 area. They are neighbors in Okemos.

Mr. Swift graduated from East Lansing High School in 1946, DePauw University, and the University of Michigan Law School. He captained the East Lansing Basketball team and was voted the most valuable player of the Trojans squad in 1946. After DePauw University, he served in the Marine Corps and has recently attained the rank of Captain.

At the University of Michigan he met his wife, Anne, who was teaching school in Ann Arbor.

He is also the Meridian Township Attorney and consequently much involved in that Area's growing pains and has guided the Township in adopting its Zoning Ordinance, assisted in the legal work for the sewer system, and the Township Charter.

He is a member of the State Bar Committee which made proposals to the Constitutional Convention on features for local governments. He is a member of

the legal aid committee for the Lansing Family Service Agency and a board member for Project Hope and a director for the Cystic Fibrosis Foundation.

Other activities include the subdivision advisory committee of the Tri-County Planning Commission, lecturer on family law at M. S. U., lecturer on politics at Wolverine Boys' State, program director of the Ingham County Young Republicans and Lansing Rotary. He and his wife are active in St. Katherine's Episcopal Church and have two children, Tim, 6, and Sarah, 4.

On February 27, 1962, a regular meeting of the Mid-Michigan Chapter was held at noon at the Holiday Motel in Lansing. Thirty-eight architects attended to hear the guest speaker, Mr. Malcolm Milks, a Lansing Councilman and Chairman of the Urban Renewal Program.

He informed the architects that Lansing is in a good position credit-wise for Federal aid programming. One third of the funds must be raised by Lansing and two thirds are then offered by the Aid Program in a loan grant arrangement. Urban renewal planning is important since people are the resources of any city, and renewal affects these people. Better understanding is needed in the community to promote such a program.

When a program is established, no outsider directs it. It is left entirely to

local representation and supervision; it becomes strictly a community project. Before a so-called plan area can be cleared, the people there must be resettled in new quarters and land cannot lie idle. A known realistic use must be ready for any development. No dreams or hoped-for development is enough. Something definite must be in evidence for Federal aid on any renewal project. This agency does lend assistance on any project in which U. S. Government money is involved, however.

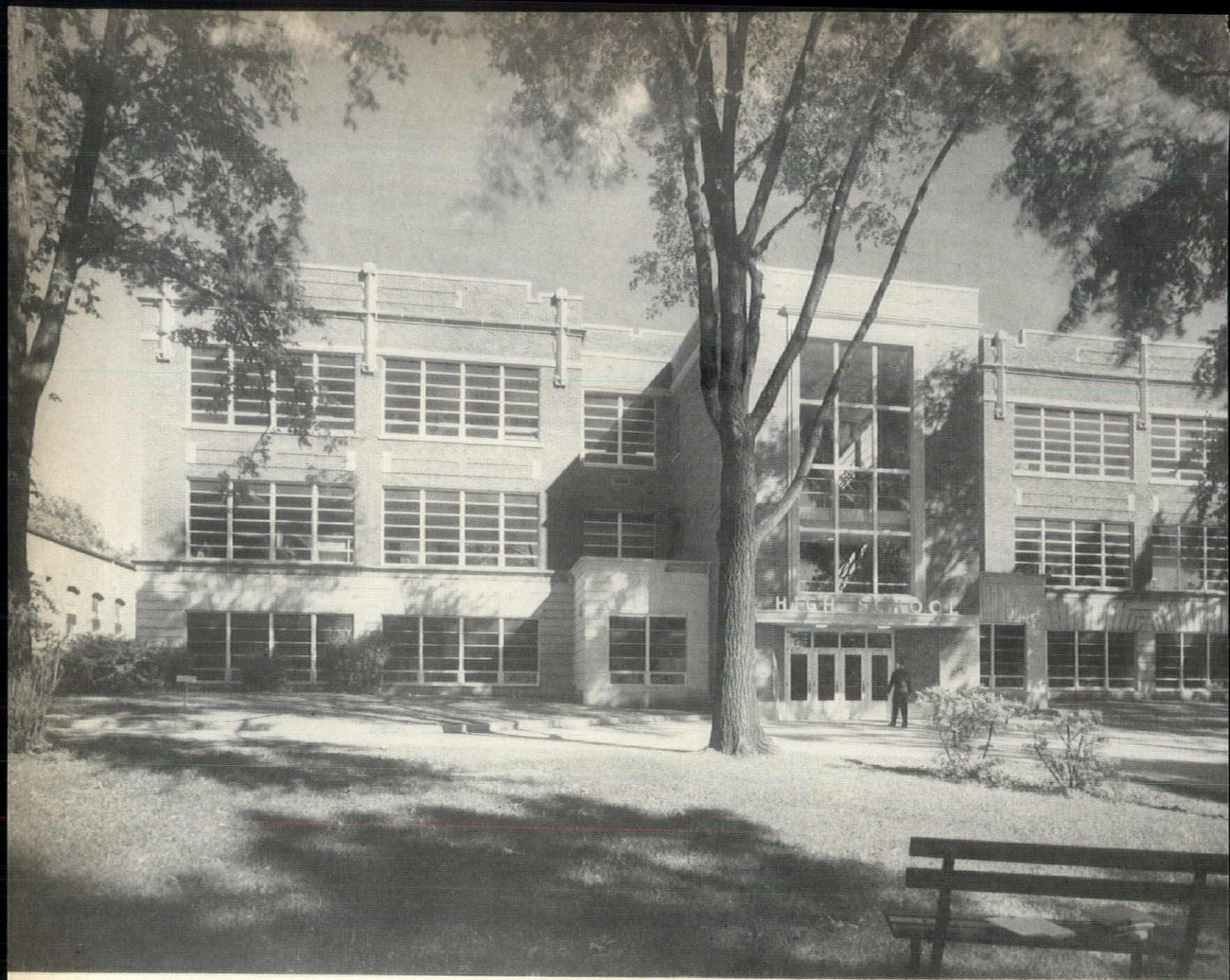
Lansing has had a neighborhood analysis made and Michigan State University has additional studies concerning races, color, religions, shopping habits, school districting, traffic patterns, highway routings, etc. Lansing, like most of our larger cities, is interested in revitalizing the community and downtown area business-wise as well as for beauty's sake. There are apparently great opportunities ahead along renewal lines for architects.

Mr. Milks showed sample brochures and literature on many successfully developing renewal plans of other cities.

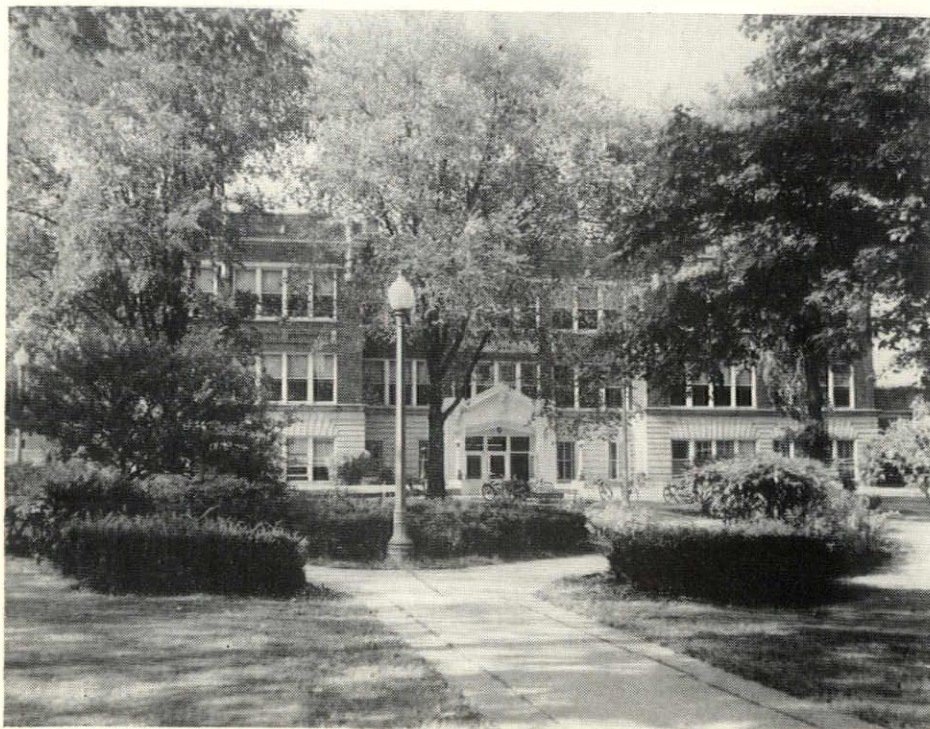
CORRECTION — The photograph on the Mid-Michigan page in our last issue did not list those officers in the front row. They were (l to r) Charles Strieby, Secretary; William Black, President and Richard Stuckman, Vice President.

Ted A. Swift and Winifred Olds





ALL PHOTOS BY LENS-ART



WHEELER,
BECKER
AND
ASSOCIATES,
INC.
ARCHITECTS
AND
ENGINEERS,
DETROIT,
MICHIGAN

PLYMOUTH HIGH SCHOOL ALTERATION AND ADDITION, PLYMOUTH, MICHIGAN

LEFT:

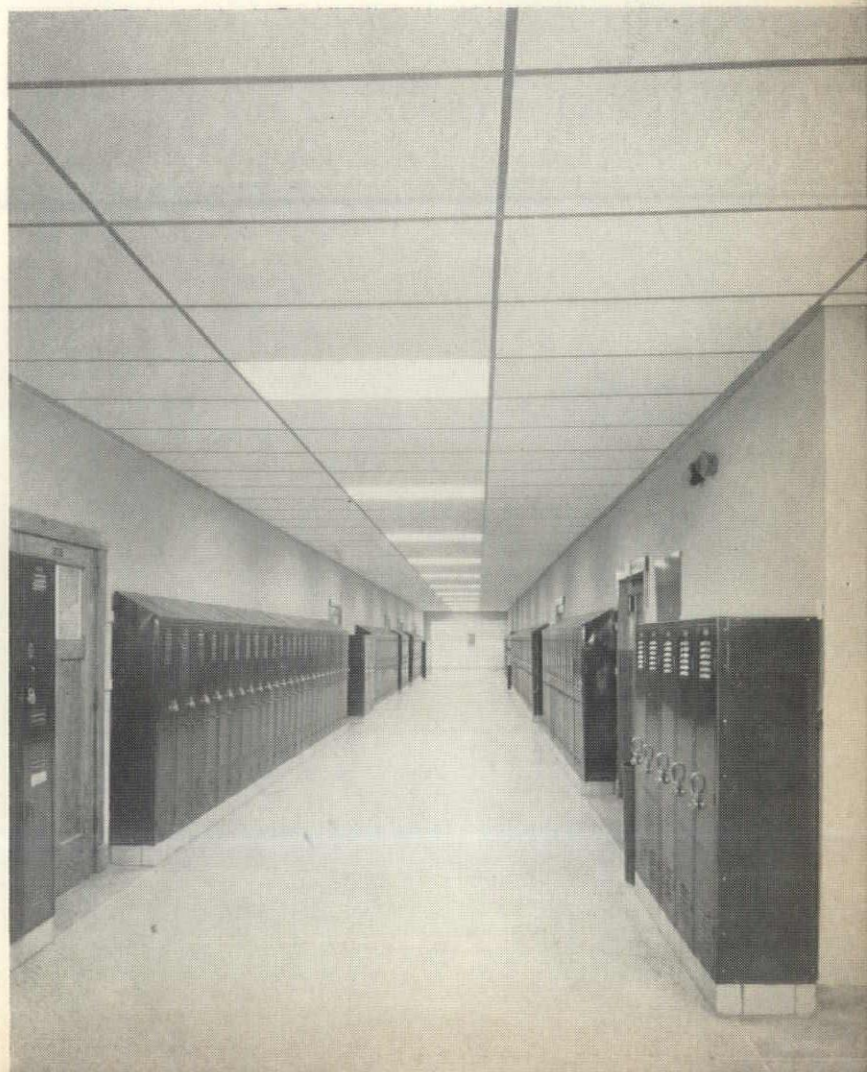
Before and After
Front Facade

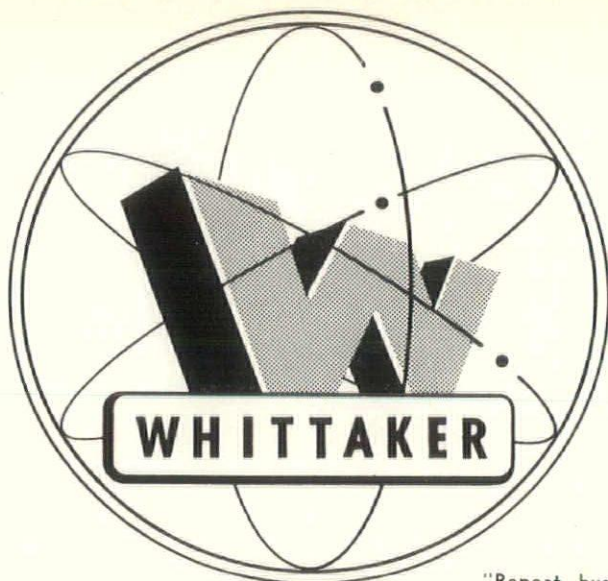
RIGHT:

Inside View of New Stair Tower
Looking Out from Third Floor

BELOW:

Before and After
Typical Corridor





OUR contribution to the new Van Zoeren Library embodies much more than the eye can see — such things as reliability, experience, integrity, qualified supervision, cooperative performance and customer satisfaction. We are delighted to have had such an important part in the construction of this new edifice.

WHITTAKER ELECTRIC COMPANY

MUSKEGON, MICHIGAN

JACKSONVILLE, FLORIDA

"Repeat business with satisfied customers represents 70% of our annual volume."

THE DUNN-RAINEY CO.

MANUFACTURERS



DURA-GLAZE Elastic
Glazing Compounds

DURA-SEAL Elastic
Caulking Compounds

Sealing Tapes
Sealing Compounds

MIRACLE-GLAZE Elastic
Glazing Compounds

"THE ADMIRAL"
Marine Seam Compounds

Putty
Specialties

4461 W. Jefferson Ave. Detroit 9, Michigan • Telephone TA. 5-7156

Michigan Drilling Co.

FOR

- Soil Test
Borings
For Foundation
and Other
Structures

- Complete
Laboratory Testing

- Diamond Core
Drilling

14555 Wyoming Avenue
Detroit 38, Michigan
Webster 3-8717

VANDER WAALS-TROSKE CO.

PLUMBING, HEATING, VENTILATING, AND PIPING CONTRACTORS

We Are Proud To Have Participated In The Mechanical Installation For The New Van Zoeren Library,
Hope College, Holland, Michigan

669 STOCKING AVENUE, N.W., GRAND RAPIDS, MICHIGAN

PHONE: GL. 9-0294

On Top Since '79
D. W. Candler
ROOFING COMPANY, INC.
551 E. VERNOR HWY. • DETROIT
D. W. CANDLER •

ROOFING AND
SHEET METAL
WORK
INDUSTRIAL AND
RESIDENTIAL
NEW ROOFS—
ASPHALT
SHINGLES
COMPLETE
ROOFING AND
SHEET METAL
REPAIRS FOR
OVER 83 YEARS



Have You Heard?



BY
EDNA
MORISON

This little story was found in one of my son's books—he belongs to a beginners library book club:

"APRIL FOOL'S DAY" from *The First Book of Holidays* by Bernice Burnett.

If anyone were to wish you a Happy New Year on April 1 you would be sure he was playing an April Fool Joke. But April Fool's Day started in France, some scholars believe, just because April 1 once WAS New Year's Day. In 1564 the King of France adopted the calendar that is used today, and the new year began on January 1. Many people forgot or didn't like the new date. They were called "April Fools."

Frenchmen used to exchange gifts with their friends on April 1 when that date began the year. They kept the custom of sending gifts on that date. But after the change in the calendar the kinds of gifts changed too. People started to send silly or worthless gifts, or packages made to look like something they were not.

That is one explanation for this holiday. But another explanation may be that this light-hearted festival is in honor of the return of spring. There is a good reason for believing that this is so, for there have been other just such foolish celebrations in the spring.

An ancient Roman festival in honor of Ceres, the goddess of grain, was held at the beginning of April. An old holiday called Holi filled with joke-making and fun is celebrated in India in early April. On the night before Holi the people all over India light huge bonfires. Then they begin to beat great drums, louder and louder. On the day itself boys and girls blow bright powders or colored liquids over the people in the streets. Before long everyone's clothes are bright green or red or purple or all colors mixed together. People dance and sing and eat sweets all day long. Everyone loves Holi!

April 17th is the date set for the monthly meeting of WALD at Women's City Club, Detroit. It is the Annual Election of Officers and Spring Tea. The program is entitled "Women Winners of the No-

bel Prize in Literature." The following is a list of the Winners. Sweden—Selma Lagerlof, 1909; Italy—Grazia Deledda, 1926; Norway—Sigrid Unsted 1928; United States—Pearl Buck, 1938. Make your reservations early and come and enjoy an interesting afternoon. Luncheon is scheduled for 12:30 p.m.

Wasn't the 48th Annual MSA Convention interesting? A big round of applause to Chairman Mrs. Ralph W. Hammett for two very interesting luncheons and programs. Also a big "Thank you" to all who worked so hard to make it such a success. So nice to meet so many "out of town" ladies too.

The models for "Spring Bonnet Preview" were from the goodwill Industries "FADS and FANCIES" show and included Mrs. Lester Irish, Mrs. Al Moezes, Mrs. Robert Winner, Mrs. George Timco, Mrs. William S. Lovas, Mrs. Alden Kulick, and Mrs. Ralph Sovel.

The cocktail party at Wald member Mrs. George Masson's home was most enjoyable as were the wedgewood ash trays every guest received.

On March 2, 1962 the Project Committee working with the Biddle House Furnishings Committee sponsored "A New Device Dramatizes Electric Living" at the Detroit Edison Company. The Electric Living Theatre was developed by Marion Ryan, Home Service Director. Design and construction were by Detroit Edison's Graphic Arts Department and Model Shop. Seven different rooms and a patio, completely furnished and equipped, showed the advantages of electric appliances, equipment, pictures, lamps—everything was included, scaled to one-fifth its normal size. Even the bathroom tiles were accurately scaled and set in individually. All Furniture was hand made to scale. Afterwards a delightful coffee hour was enjoyed along with delicious brownies.

Mrs. Frank North of the Detroit Edison donated two door prizes. The ladies electric shaver was won by Mrs. Marie Whittier, and the electric clock was won by Mrs. Ralph Hammett. 62 attended the party and the "coffers" of the Biddle House Furnishings Committee enriched by \$134.00. We do want all of you to know how much the committee appreciates your support.

A number of suggestions have been received in answer to our recent request for different ways of raising money to add to the Biddle House Furnishings Fund. To those who have responded,

we say "thank you" for some varied and interesting ideas. All are being considered and will be put to good use in the course of time.

Ann Arbor News!

A wonderful new program was announced in Ann Arbor recently and I thought it so interesting I give you advanced notice.

The Association of Producing Artists, a Broadway theatrical company, has signed a three-year contract with the University to become a resident group producing plays in Ann Arbor beginning in the fall. Prof. Robert C. Schnitzer director of the U. of M. Professional Theatre Program, announced.

The Professional company will be in residence on the U. of M. campus for 20 weeks each year, and will present eight plays in a "Fall Drama Festival" at Lydia Mendelssohn Theater and a "Winter Drama Festival" at Trueblood Auditorium.

A formal premier of the company's first production in Ann Arbor has been slated for Wednesday, October 3, 1962 to launch the project.

Among some of the stars playing will be Actress Helen Hayes, star of Broadway productions, Maurice Evans, star of stage, screen and television, who will co-star in "As We Like It," a presentation of scenes from Shakespearean plays, on Nov. 8 in the Hill Auditorium.

Other stars to be presented will be Judith Anderson in "Medea '62" on March 29, and "A Session with Charles Laughton," scheduled for next season.

The presentation in Ann Arbor results from the association between Prof. Schnitzer and Miss Hayes during the recent Theater Guild world tour under sponsorship of the U. S. State Department, which was managed by the Professional Theater Program director.

Prof. Schnitzer's wife, Marcella, directed Miss Hayes in both "The Skin of Our Teeth" and "The Glass Menagerie" on the tour. Thus, next fall's engagement will be a reunion for the star with her former manager and director.

Miss Hayes, who has shown a personal interest in the new U. of M. Professional Theater Program, wrote recently from Peru, during her Latin American Tour: "Congratulations to the University of Michigan and to Ann Arbor for the exciting new project. It is a significant landmark in the regional theater movement—count on me to inaugurate your first season next year."

(Continued on Page 25)

ITEMS

THOMAS H. HEWLETT, Principal of the Architectural firm of O'Dell, Hewlett & Luckenbach, Associates of Birmingham, Michigan has announced the appointment of C. Henry Haberkorn, in charge of program development.

Haberkorn, who has been with H. E. Beyster & Associates, Inc. for the past twenty years has participated in the development of many large and well-known projects such as the Wayne County Youth Home, the Flint Municipal Center, the Fisher-Titus Memorial Hospital in Norwalk, Ohio and the Paul Cousino Senior High School in Warren, Michigan.

A graduate of Harvard University, Haberkorn is presently Vice-President of the Board of Education of Grosse Pointe,

trustee of the Detroit Orthopedic Clinic, member of the Board of Franklin Settlement and a member of the Metropolitan Detroit Area Regional Planning Commission.

In making the announcement, Hewlett said "The large number and diversity of new buildings ahead of us in the next few years require able administration if we are to serve the people of the community well. Mr. Haberkorn's broad experience will help us broaden the scope of our architectural efforts."

THE FORT WAYNE MORTGAGE CO., established in 1938, is presently offering a finance program that is of interest to architects who have doctor clients planning to build clinics.

Doctors can secure funds to help them

build and maintain their clinics by availing themselves of the company's liberal mortgage and construction financing.

In addition to the commercial financing, the company specializes in land development loans, and is in a position to originate FHA, VA and conventional residential mortgages.

The Fort Wayne Mortgage Co. has the reputation of disbursing loans quickly without any time consuming delays. Since its inception, it has processed and closed more than \$185,000,000 in mortgages.

As part of their expansion program, the Fort Wayne Mortgage Co. recently opened a new office in Denver, Colorado. The company's main office is located on the second floor, of the First National Building, in Detroit, Michigan.



Lens-Art Photo

RALPH R. CALDER - ARCHITECT

ACOUSTICAL AIRSON CEILINGS, THE
ENGINEERED AND PROVEN SYSTEM OF
AIR DISTRIBUTION

FOR VAN ZOEREN LIBRARY—HOPE COLLEGE
HOLLAND, MICH.

BY HAROLD R. SOBIE COMPANY
3684 - 28th STREET S.E. GRAND RAPIDS 8, MICHIGAN

CREATE

BEAUTY

BY USING

FACE BRICK

BEFORE SELECTING YOURS
SEE

CENTURY BRICK COMPANY

14910 LINWOOD AVE. • DETROIT 38, MICHIGAN



M. DEN BRAVEN

Our 50th Anniversary
(1912 - 1962)

SHEET METAL
VENTILATING
AIR CONDITIONING

9080 Alpine Avenue
Detroit 4, Michigan
WE. 3-7494-5-6

**Nelson
Company**

PLUMBING
HEATING &
AIR CONDITIONING
SUPPLIES

WHOLESALE

Beautiful Plumbing Display Room
Available for Architects and
Their Clients

MAIN OFFICE
and
DISPLAY ROOM

8880 HUBBELL AVE., DETROIT 28
BRoadway 3-4600

CRANE • KOHLER
BRIGGS • CASE

BUILDERS & TRADERS EXCHANGE OF DETROIT

PETER J. KOENIG, President

1486 Gratiot Avenue, Detroit 7, Mich.

RICHARD J. KULLEN, Vice President

4610 E. Nevada Avenue, Detroit 34, Mich.

W. RODMAN TURNER, Vice President

464 Brainard Street, Detroit 1, Mich.

CLARENCE L. LAUDE, Treasurer

1325 Ford Building, Detroit 26, Mich.



WILLIAM C. DENNIS, Secretary-Manager
2210 Park Avenue, Detroit 1, Mich.

JOHN L. McGARRIGLE, Ass't Sec'y-Mgr.
2210 Park Avenue, Detroit 1, Michigan

DIRECTORS: Edward C. Chase; Carl B. Johnson, Jr.; Louis J. Perrone; Charles H. Reisdorf, Jr.; William G. Strawbridge

11th Annual B & T Doubles Classic

More than 200 bowlers participated in the Eleventh Annual Builders & Traders Doubles Classic Saturday, February 10th at the Great Lakes Bowling Centre. Winners of the E. J. Brunner Memorial Trophy, emblematic of the best doubles combination including handicap, were Frank E. and Kenneth Mitzel of the Frank Mitzel Insurance Company. In addition to the Brunner Trophy they will also receive individual trophies donated by Harold Allen of Great Lakes Bowling Centre. The highest game in the eleven-year history of the tournament was rolled by Jim Witt, who had a score of 278 in his opening game.

Prizes were mailed to the following (scores listed include handicaps):

Frank E. Mitzel-Kenneth Mitzel 1324; Edward Frank-Wilfred Kreitmeyer 1309; Barney Brogeman-James Witt 1307; Henry Young-Tony Solitro 1306; Ferd Koss-Frank Hamilton 1304; Eldon Borer- H. M. Hathaway 1301; R. S. Wanley-Edmund Vernier 1299; Al Sears-R. Edw. Martin 1297; Jim Snyder-Jack Powell 1296; Carl Fromm-Wm. Korte 1293; R. M. Anderson-Jack Lietke 1283 (tie); William Peters-Bob Hosier 1292; Grant Walters-R. Day 1292 (tie); and Fred Domen-Dave Domen 1289.

The doubles team competition was followed by various feats of stunt bowling for which special prizes were awarded. An excellent buffet dinner was served; musical entertainment was provided by Frank Paul; nearly one in three persons present received a door prize, liquid refreshments were plentiful; and the customary social and recreational activities lasted well into the night. All these activities contributed to a very enjoyable day and everyone is looking forward to the 12th Annual Tournament next year.

Members of the committee who worked so diligently to make this affair a success are: Nelson Kropik, Chairman; Charles H. Chapman; Horace H. Dickinson; Gilbert E. Diefenbacher; Reg Harp; John Maas; Zaven Margossian; Frank Mitzel; Mervin E. Murphy; William T. Patterson; Monte Stanley; Jack W. Vinton and Herman F. Marsh, Secretary.



Winn Brunner Photo

WALD (Continued from Page 23)

So we won't have to be going to New York to see the best Plays. More detailed information will be announced later and I am sure none of you will want to miss the new program in the fall. WALD members from Ann Arbor have always in

the past given generously of their time, effort and support to our programs in Detroit. This will be a most enjoyable way to reciprocate.

Somewhere I read: Yesterday is experience; Tomorrow is hope; Today is getting from one to the other as best as we can.

FRANK KLINGAN (left) and Don Trefry (right) with receptionist of Michigan Society of Professional Engineers' exhibit at the National Engineers' Week at the Sheraton-Cadillac Hotel February 18-24, 1962. Both Klingan and Trefry are past Presidents of Detroit Chapter, MSPE. Trefry is a Commercial Sales Engineer with The Detroit Edison Company.



PALMER-SMITH COMPANY

GENERAL BUILDERS



TEMPLE 3-2114
415 BRAINARD STREET
DETROIT 1, MICHIGAN

GRAND RAPIDS MILLWORK CO.

ESTABLISHED 1935

Millwork On
Van Zoeren Library
Hope College
Holland Michigan

Architectural Millwork Only

756 FRONT AVE., N. W., GRAND RAPIDS 4, MICH.
GL. 6-8559

T. KEPPEL'S SONS

ESTABLISHED 1867

CONTRACT HARDWARE
FACE BRICK
SOLAR TILE
FOR
VAN ZOEREN LIBRARY
HOPE COLLEGE
HOLLAND, MICHIGAN

63 EAST 8TH ST., HOLLAND, MICHIGAN • EX 2-2838

DIACK BROWN CO.

All Millwork
For
Plymouth High School
Alteration and Addition
Plymouth, Michigan

44681 ANN ARBOR ROAD, PLYMOUTH, MICH.
GLENVIEW 3-4350

Institutional and Commercial Millwork

Acme Window & Door, Inc.

Division of Pioneer Fireproof Door Corporation

Hollow Metal Doors & Frames

All Metal Frames Manufactured In Our Detroit Plant

Hollow Metal Work For
Plymouth High School
Alteration and Addition
Plymouth, Michigan

CR 8-5200
2728 JOHN DALY ROAD, INKSTER, MICHIGAN

WILLIAM E. BATES & CO.

CARPENTRY CONTRACTORS

FOR

PLYMOUTH HIGH SCHOOL

ALTERATION AND ADDITION

PLYMOUTH, MICHIGAN

P. O. BOX 4146 • DEARBORN, MICH. • LU. 2-5161

Van Daalen - Bomhof, Inc.

MASONRY CONTRACTORS

Masonry Work For
Van Zoeren Library
Hope College
Holland, Michigan

819 LEONARD STREET, N.W.
GRAND RAPIDS 4, MICHIGAN
PHONE: 742-2260

JOHN B. ROSSI CO.

All Ceramic Tile Work
And Vinyl Asbestos Flooring,
Rubber Stair Treads & Risers
For
Van Zoeren Library and
Women's Dormitory
Hope College, Holland, Mich.

563 GRANDVILLE, S.W., GRAND RAPIDS 3, MICHIGAN
PHONE: GL 6-1458

THE PRODUCERS' COUNCIL Inc.

NATIONAL ORGANIZATION OF BUILDING MATERIALS AND EQUIPMENT MANUFACTURERS

Official Publication, Michigan Chapter

EMRYS L. WILLIAMS, President

CHARLES W. BURROWS, Vice President

CHARLES E. THORNTON, Secretary

EUGENE L. HAMBLETON, Treasurer

VERA KHORANOFF, Recording Secretary

14420 Livernois Avenue

Detroit 38, Michigan

Townsend 8-2600



American-Saint Gobain Tailors Capacity, Marketing Concept To Architects' Convenience

One of the nation's leading flat glass producers, American-Saint Gobain Corporation will be, with the opening of its new plate glass plant later this year, the nation's only manufacturer and distributor of a complete line of flat glass products.

This modern marketing concept—"everything under one roof"—has been developed by A-SG for the convenience of architects and other building products buyers and specifiers. It is but one aspect of the company's market-oriented philosophy. Recognizing that architectural materials must combine aesthetic and functional features with top quality, the company has emphasized the development of its research, design and production capabilities since its formation in 1958 with the merger of Blue Ridge Glass Corporation and American Window Glass Company under the auspices of Compagnie de Saint-Gobain of France.

Construction of the plate glass plant at Kingsport, Tenn., is a major step in this

LEO R. KOCESKI is with the Micarta Division of Westinghouse Electric Corporation of 5757 Trumbull Avenue in Detroit.

He sells Micarta products including sheet stock, panel wall, waterproof wall panels, partition panels and Micarta-faced doors in a territory including Saginaw, Grand Rapids and Toledo areas in addition to Detroit.

Leo was born in Canonsburg, Pennsylvania but came to Michigan to attend the University of Michigan. He now lives in Dearborn, Michigan and being single he has ample time to devote to his hobbies which include dancing and all sporting events.



development. The most modern plate glass plant in the industry, the new facility will feature a fully automated production line—from batching plant to shipping platform—backed by the most advanced technical and artistic know-how in plate glass manufacturing. The plant will have an annual capacity of 40 million feet of polished plate.

As a further step in increasing capacity and improving quality, A-SG recently announced a program to modernize and expand its sheet glass production facilities. This program, to be completed at its Jeanette, Pa., plant late this year, will insure adequate capacity to meet the anticipated rising demand for sheet glass and at the same time promote production efficiency and quality control.

While constructing and expanding plate and sheet glass manufacturing facilities, the company has also been researching patterned glass products. Here the emphasis has been on developing patterns and textures which will aid the architect in solving design problems.

The results of this program can be illustrated by a product introduced within the last year, polished Huetex. An insulated glass spandrel panel, it combines for the first time a heat-tempered panel backed with a coat of ceramic enamel and a fused-on layer of metallic aluminum. Developed in recognition of certain design problems faced by the architect in curtain wall construction, polished Huetex's insulating inner surface eliminates the need for mechanical ventilating systems to carry off the heat which builds up behind an uninsulated panel. Weep holes which permit ventilation of the dead air pocket prove fully adequate. The panel also affords added insulation to reduce heating and air conditioning costs.

To provide added possibilities for design variations, polished Huetex is color-matched to A-SG's patterned Huetex so that the two can be combined in the same installation to vary the appearance of a curtain wall system and at the same time add an impression of depth.

While new product development serves to illustrate the company's creative approach to serving its markets, the wide variety in American-Saint Gobain's full line of products emphasizes glass' many architectural advantages. High quality clear and gray-tinted sheet glasses for glazing walls and windows; clear and tinted plate glasses in a variety of colors for glazing large openings, display windows and for use by mirror manufacturers; and rolled glasses for spandrel panels, interior and exterior applications and a host of other uses are proving an aid to architects in effectively expressing new ideas with glass.

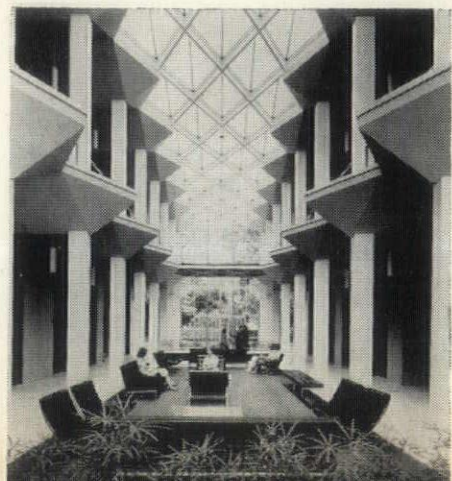


A checkered pattern of opaque Huetex panels alternating with tinted glass makes a pleasing and devout facade for the front elevation of St. Augustine's Roman Catholic Church, Union City, N. J. (above).

WM. E. BATES & CO., CARPENTER CONTRACTORS, announces removal of its offices from Dearborn, Mich. to 2941 Jerome Ave., Detroit 12, Mich. The new telephone Number is 366-7460.

A soft yet bright daylight filters through the skylight at McGregor Memorial Conference Center on the campus of Wayne State University, Detroit (below). To create this ideal environment for thought and study, architect Minoru Yamasaki utilized Huewhite, a translucent, milk-white light diffusing glass, in the skylight. Wired in hexagonal mesh for extra strength, the skylight's continuing pattern of three dimensional triangles appears to slice the building's central hall-lobby in two identical halves and provides a brilliant crown on the structure's clean, attractive lines.

Architect: Minoru Yamasaki & Associates; Glass Supplier: Cadillac Glass Company; John Britton for American-Saint Gobain Corp.



Bulletin Board

A CLERGYMAN who had served a parish in the ragged foothills of the Blue Ridge for many years felt that he should perhaps turn his work over to a younger man, who might bring fresh energy and inspiration to the work. But before taking action he consulted one of his parishioners, an old mountaineer, and explained his thoughts on retirement. "You know, Grandfather," he concluded, "they say a new broom sweeps clean."

The old man pondered for a time. "Yes, son," he said, "I know they say a new broom sweeps clean. But an old broom knows where the dirt's at." — Reader's Digest

"IF AMERICA FORGETS where she came from, if the people lose sight of what brought them along, if she listens to the deniers and the mockers, then will begin the rot and dissolution." (Carl Sandburg).

"No greater calamity can befall a people than to break utterly with their past." (Gladstone)

"A people which takes no pride in

the noble achievements of remote ancestors will never achieve anything worthy to be remembered with pride by remote descendants." (Macaulay).

A MANICURIST recently told us that she was going to get rid of her boy friend. Asked why, she said that he took her out to dinner, and she added:

"He just let me sit down the best way I could, didn't even offer to hold my chair. Then he took a piece of bread and buttered the whole thing at once."

"Heavens above," we replied, "I should think you would get rid of him. You can't afford to be seen with a person like that."

C. ALLEN HARLAN, Detroit's electrical contracting tycoon and efficiency wizard, has just recently returned from a whirlwind swing around the country for Secretary of Defense McNamara, visiting major government installations where his knack for cost-cutting were extensively utilized. Harlan, a patriot to the core, does this at no expense to the government, but feels every one who has a talent should in some way contribute it to the benefit of the American people. More wealthy men might take note of this and do likewise.

Advertisers

Acme Window & Door, Inc.	26
Bates, William E. & Co.	26
Candler, J. D. Roofing Co., Inc.	22
Century Brick Co.	24
Davies, John W.	10
Dehaas, C. T. Co.	10
Den Braven, M.	24
Detroit Edison	3rd Cover
Diack Brown Co.	26
Dox Plank	2nd Cover
Dunn-Rainey Co.	22
Evans Brick Co.	Insert 6-A
Fort Wayne Mortgage Co.	10
Grand Rapids Millwork Co.	26
Harlan Electric Co.	1
Keppel's, T. Sons	26
Lardner Elevator Co.	28
Lens-Art Photographers	28
Lincoln Brick Co.	6-B
Mahon, R. C. Co.	4th Cover
Maraldo, L. Co.	28
Markward, F. W. Co.	4
Michigan Certified Concrete Products	10
Michigan Consolidated Gas Co.	2
Michigan Drilling Co.	22
Modu-Wall, Inc.	7
Monthly Bulletin Books	6-B
Moors, Wm., Concrete Products, Inc.	2nd Cover
Nelson Co.	24
Nulite Co.	10
Overly	10
Palmer-Smith Co.	26
Plymouth Electrical Contracting Co.	4
Rossi, John B. Co.	26
Service Art Plastering Co.	28
SMCAD Industry Fund	18
Sobie, Harold R. Co.	24
Stevens, Frederic B., Inc.	18
Van Daalen-Bomhof, Inc.	26
Vander Waals-Troske Co.	22
Whittaker Electric Co.	22
Western Concrete Products Co.	2nd Cover

SERVICE ART PLASTERING COMPANY

Armstrong Fire Guard & Ventilated Travertone

ARMSTRONG FIRE-RATED CEILINGS
FOR
PLYMOUTH HIGH SCHOOL
ALTERATION AND ADDITION
PLYMOUTH, MICHIGAN

4612 WOODWARD AVE., DETROIT 1, MICHIGAN
TEMPLE 3-9013

LARDNER ELEVATOR CO.

Servicing All of Michigan

ELEVATOR INSTALLATION
VAN ZOEREN LIBRARY
HOPE COLLEGE
HOLLAND, MICHIGAN

300 Riopelle St., Detroit 7, Mich.
WOODWARD 5-4870

TILE AND TERRAZZO

PLYMOUTH HIGH SCHOOL
ALTERATION AND ADDITION
PLYMOUTH, MICHIGAN

By

L. MARALDO CO.
20260 Sherwood Ave., Detroit 34, Mich.
TW. 2-2200

Lens-Art Photographers

15743 JAMES COUZENS HIGHWAY

Detroit 38

UN. 4-5134

Official Photographers for
Monthly Bulletin, MSA



**Michigan Bell
didn't get everything
it expected
from this
all-electric kitchen**

This is the cafeteria kitchen in Michigan Bell Telephone Company's Northwest Office Center in the city of Southfield.

The cafeteria is open for breakfast, lunch and coffee breaks and has a total daily customer count of 4,000.

It opened last fall, and Randall Furneaux, the company's divisional food manager, was immediately pleased with electricity's cleanliness and precision. But he did expect that it would cost considerably more than flame.

Now that the figures are in, however, Mr. Furneaux reports this: "I have 10 kitchens in my division. This is the only all-electric one and its operating costs are lowest of all."

What's the secret of electricity's low-cost efficiency? Simply this: There's no heat loss. The heat goes into the food, not up a flue. Moreover, there'll be long-range savings because electrical equipment is rugged and long lasting. Want to hear more? In metropolitan Detroit, call WO 2-2100, Ext. 2224. Elsewhere phone your Edison Office.

DETROIT EDISON

MAHON'S "2 IN 1" LONG-SPAN ROOF DECK



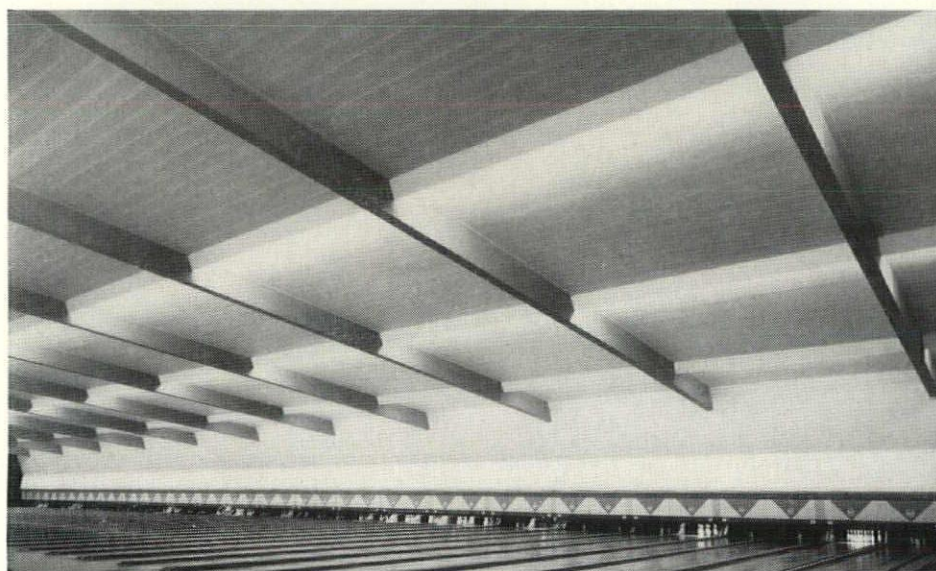
structural roof



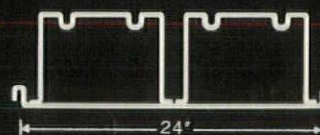
finished ceiling

When an attractive, finished ceiling can be gained at the same time the steel roof structure is installed . . . that's economy. And when acoustical treatment and troffer lighting can also be had in the same installation . . . that's *real* economy! Mahon's Long-Span M-Deck provides all this—in addition to having a high strength to weight ratio for long wall-to-wall or truss-to-truss spans.

For example, in a recent school construction project, the architect stated that the savings resulting from Mahon M-Deck were enough to outfit the whole school. Do savings like this interest you? If so, call your local Mahon representative or write for information. (Also listed in Sweet's Files.)

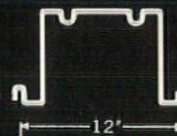


BASIC M-DECK SECTIONS



SECTION M2SR

CEL BEAM DEPTH 1½", 3", 4½", 6" or 7½"



SECTION M1-02

OPEN BEAM DEPTH 3", 4½", 6" or 7½"

Bowling alley combines structural roof, finished acoustical ceiling by using Mahon "2 in 1" Steel Roof Deck.

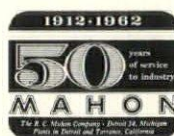
OTHER MAHON BUILDING PRODUCTS

Aluminum or Steel Curtain Wall Metalclad Fire Walls • Rolling Steel Doors • Acoustical Metal Walls, Partitions and Roof Deck.

MAHON CONSTRUCTION SERVICES

Structural Steel—fabrication and erection • Steel Fabrication—Weldments • Geodesic Domes—fabrication and erection.

Write for
Steel Deck Catalog
No. D-62
or see Sweet's Files



THE R. C. MAHON COMPANY

6565 E. EIGHT MILE ROAD, DETROIT 34, MICHIGAN

Manufacturing Plants—Detroit, Michigan and Torrance, California.

Sales-Engineering Offices—Detroit, New York, E. Orange, N. J., Cleveland Hts., Ohio, Chicago, Torrance, San Francisco and Seattle.

MAHON