

AMERICAN INSTITUTE  
OF  
ARCHITECTS  
MAY 11 1954  
LIBRARY

*including national architect*



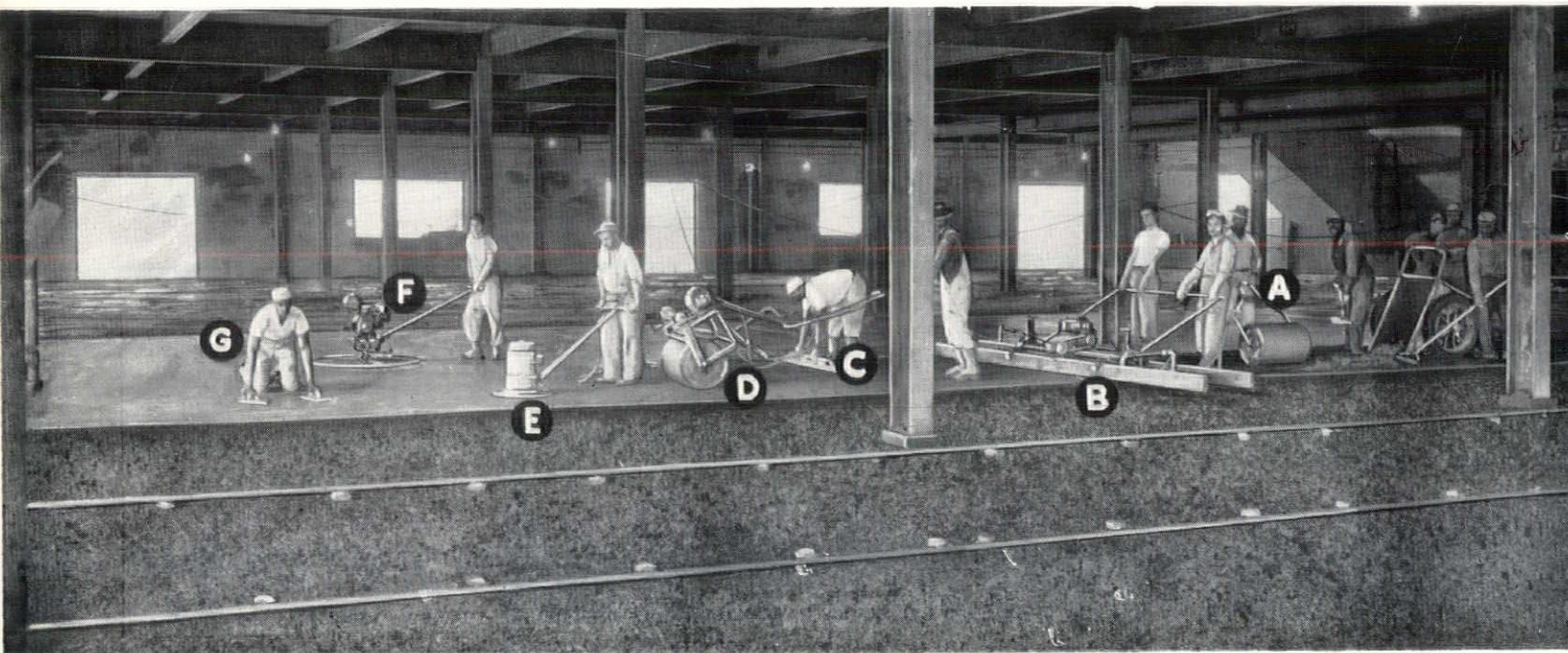
# 10,000<sup>#</sup> Zero Slump Concrete



YES—The installation of heavy-duty concrete floors with a zero-slump mix is possible by the NARDONI process, producing a 1" top finish denser and more impervious to wear than any other.

Only 3½ gallons of water maximum is used to each bag of cement. So dry, special mixing equipment with rotating blades instead of the usual revolving drum are necessary to facilitate handling. To level, mechanical rodding machines on steel screeds are used. Next the Vibro Roller and the mechanical steel floats, followed by motor-driven trowelling machines. The superb floor will not dust; will withstand heavier loads; will stand abrasion longer than any other type of floor; will not craze; will decrease the overhead and operating expense of any institution or factory; contains aggregates that will not crush or roll out under the most severe traffic conditions; is laid by our own skilled mechanics; will show floor profits with years of quality service, and yet the cost eventually is less than an ordinary concrete floor topping.

Supported by years of experience and millions of feet of all types of floor installations



A—"Roller"—Compacts material after it has been spread approximately ½" above finish grade.

B—"Mechanical Rodding Machine"—Rodding and Compacting.

C—Manual filling up and striking after screeds are removed.

D—"Vibro-Roller"—Will further compact and produce density.

E—"Rotary Floating Machine"—Will also further compact and close all voids.

F—"Motor Driven Trowelling Machine"—Will further seal the finish surface.

G—Hand Trowelling for final smooth hard finish.

Specification Folder Sent  
at Your Request

## NARDONI CEMENT FLOOR CO.

13029 E. EIGHT MILE ROAD  
EAST DETROIT, MICHIGAN  
LAKEVIEW 7-5050





## IT TOOK "DRILL-CUTTERS" 3 YEARS TO QUARRY AN OBELISK IN ANCIENT EGYPT 3,500 YEARS AGO

**T**HE PAINTING above depicts the famous obelisk quarry at Aswan located at the First Cataract on the River Nile.

Hundreds of serfs are "cutting" the obelisk out of the rock bed by pounding down large wooden poles, on the lower ends of which fist-size hard dolerite stones are tied.

Each three-man team works on a two-foot square measure for twelve hours under general temperatures ranging up to 120 degrees. One hour's pounding removes one millimeter of stone or 1/25 of an inch. Undercutting is done by pounding the rock bed with dolerites held in the hand. It takes about three years to do the job. How quickly our electric saw and pneumatic drill would do it today!

The rough obelisk was then rolled to the Nile bank on wooden logs. There it was polished to a high luster with fine river sand. This accomplished, the stone shaft was transported by watercraft down the river to be enshrined at the entrance of some great temple.

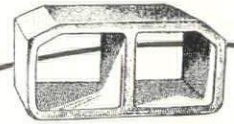
Obelisks ranged in size from 250 to 1200 tons in weight. The largest—never finished—may be seen today still in the quarry at Aswan where an ancient earthquake had cracked it before completion.

Thus we see how in ancient times man mastered technological problems by sheer endurance and mass labor. Now the time element is overcome by the efficiency of modern machinery and technical know-how—a field in which dynamic Detroit stands pre-eminent.

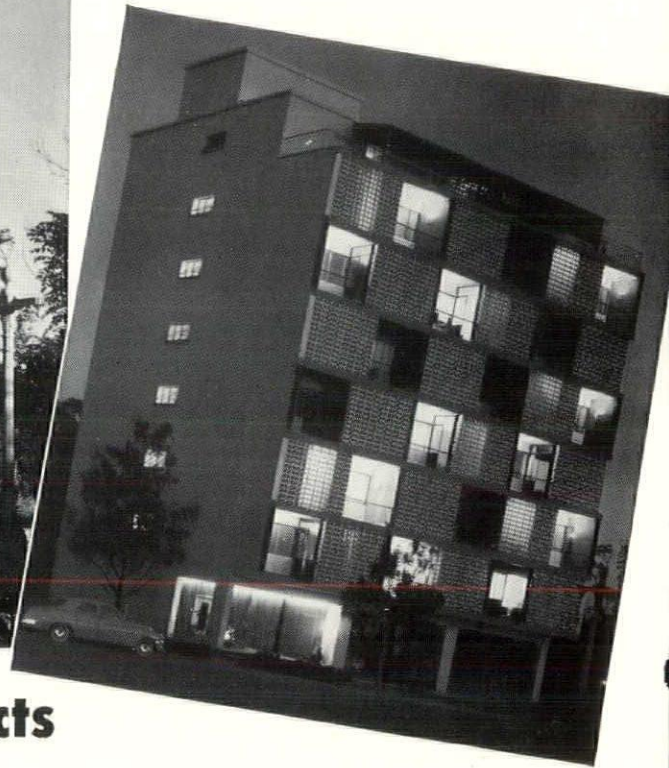
\* This is the fifth of a series of paintings entitled "Adventures in Time", painted in full color by Marvin Beerbohm, from material prepared by Dr. George Lechler, Wayne University scientist, for the Harlan Electric Company.

*C. Allen Harlan*





Vibrapac Block used in creating an unusual effect in this Apartment House, located in Venezuela, South America. In this case, the architect used a floor filler block which is normally used for low-cost fire-safe floors. The interesting pattern was created by vertical stacking.

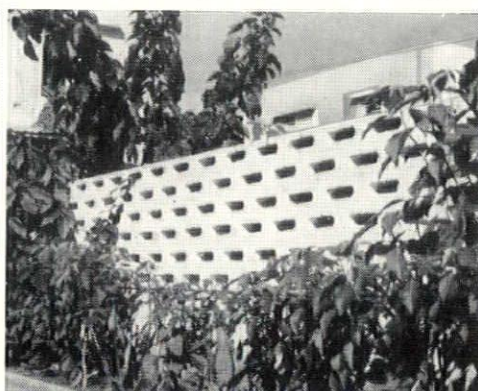
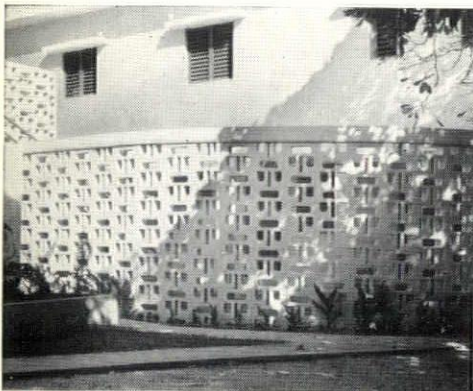


## *You, too, can obtain beautiful effects* **with Vibrapac Masonry Units**

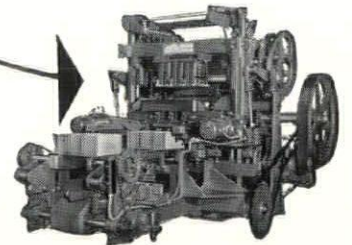
You know you get firesafety, stormsafety, built-in insulation and lifelong durability in a Vibrapac Block constructed building. In addition, you can get unusual structural beauty . . . something substantial and enduring . . . not just "looks" alone. This beauty is brought out in various ways, limited only by the imagination and skill of the designer.

Vibrapac Block . . . in the creative hands of capable architects and builders . . . have become, in effect, a new building material. Many outstanding homes, apartment houses, churches, schools and public buildings are convincing evidence of the **BEAUTY** and **VERSATILITY** of this modern building material.

These attractive garden enclosures were designed by using beam-lintel block placed on edge. Core openings then became horizontal, creating interesting sun and shadow patterns. The enclosures arrest excessive winds and provide privacy, shade and safety.



Day and night pictures of Vibrapac Block apartment house located in the east end of Caracas, Venezuela. Guinand & Benacerraf, Architects. Ramon Closa, Contractor.



### **BESSER Automatic VIBRAPAC**

World's Leading Concrete Block Machine. Produces all types and sizes of high-quality block. Capacity up to 7000 block per day. Fully automatic. Hand labor reduced to pushing a switch button and guiding a power off-bearing hoist.

### **BESSER MANUFACTURING CO.**

Complete Equipment for Concrete Products Plants  
ALPENA, MICHIGAN, U.S.A.



# roger allen to be faia

Roger Allen of Grand Rapids has been approved for fellowship in The American Institute of Architects, following a meeting of the Institute's jury of fellows in Washington, D. C., it is announced by Clair W. Ditchy, F.A.I.A., president of the national body.

Fellowship, the Institute's highest class of membership, is bestowed upon those who have notably contributed to the advancement of the profession, in design, service to the profession, service to the Institute, or public service.

Allen and 20 other distinguished architects from throughout the U. S. will be formally elevated to their new status at the banquet in connection with the Institute's 86th annual convention in Boston, June 15-19, 1954. Allen is the only one from Michigan being so honored this year.

The Grand Rapids architect, in addition to having to his credit some of Michigan's

most important buildings, has distinguished himself in the field of writing and public speaking. For some years he has conducted a daily column in the Grand Rapids Press, under the title, "Fired at Random." He has also been in much demand throughout the nation as a speaker and humorist.

Allen followed his formal professional education by working with his father, the late Frank P. Allen, of Grand Rapids, under the firm name of Frank P. Allen and Sons. He now practices as Roger Allen and Associates, Architects.

He has served as president of the Michigan Society of Architects, as well as of the Western Michigan Chapter of The American Institute of Architects. He is now a director of the Society.

Allen was awarded the Gold Medal of The Michigan Society of Architects, at its annual convention in Detroit, March 12.

## table of contents

Advertising Index .....	4	Frank Lloyd Wright .....	16	M. Robert Olp .....	27
National Architect .....	5	Detroit Chapter .....	19	H. Thompson Stock .....	29
A.I.A. South American Trek .....	9	Western Michigan Chapter .....	21	Cubic Foot Costs .....	33
Metropolitan Museum .....	13	News .....	23	Saginaw Valley .....	35

## coming issues

JUNE—WESTERN MICH., A.I.A.

JULY—ROGER ALLEN & ASSOCIATES

AUGUST—11th Annual Mackinac Mid-summer Conference

SEPTEMBER—CORNELIUS L. T. GABLER

OCTOBER — DETROIT CHAPTER, A.I.A.

NOVEMBER—ANNUAL M.S.A. ROSTER (Geographical)

DECEMBER — CLAIR W. DITCHY

JANUARY, 1955 — GEORGE D. MARSON & CO.

FEBRUARY—SUREN PILAFIAN

MARCH — 41st ANNUAL M.S.A. CONVENTION

APRIL—ANNUAL M.S.A. ROSTER (Alphabetical)

MAY—SAGINAW VALLEY A.I.A.

## monthly bulletin, michigan society of architects, volume 28, no. 5

### MONTHLY BULLETIN

Michigan Society of Architects  
120 Madison Ave., Detroit 26, Mich., WO. 5-3680

Official Publication of the Michigan Society of Architects: Linn Smith, President; Charles B. McGrew, 1st Vice-president; Adrian N. Langius, 2nd Vice-president; Paul A. Brysselbout, 3rd Vice-president; James B. Morison, Secretary; Elmer J. Manson, Treasurer; Directors — Roger Allen, Leo M. Bauer, Eugene T. Cleland, Phillip C. Haughey, Sol King, Amedeo Leone, Frederick E. Wigen.

The name "Monthly Bulletin, Michigan Society of Architects" is owned by Monthly Bulletin, Inc., a subsidiary of the Michigan Society of Architects, a Michigan non-profit corporation. Otherwise owned by Talmage C. Hughes, F.A.I.A., founder (1926), editor and publisher, Executive Secretary of the Society and of the Detroit Chapter, The American Institute of Architects.

Edited and published under the direction of Monthly Bulletin, Inc.: Adrian N. Langius, President; Sol King, Vice-president; Paul A. Brysselbout, Secretary-treasurer; Talmage C. Hughes, Resident Agent.

### OTHER SOCIETY COMMITTEES:

Executive—Linn Smith, Chairman; Roger Allen, Sol King, Charles B. McGrew.

Administrative—Sol King, Chairman; Leo M. Bauer, Adrian N. Langius, Amedeo Leone, Elmer J. Manson.

Public and Professional Relations—Charles B. McGrew, Chairman; Eugene T. Cleland, James B. Morison.

Education and Research—Roger Allen, Chairman; Paul A. Brysselbout, Phillip C. Haughey, Sol King, Frederick E. Wigen.

Publicity—Phillip C. Haughey, Chairman; Roger

Allen, Talmage C. Hughes, C. A. O'Bryon, Clarence H. Rosa.

Biddle House Restoration—Adrian N. Langius, Chairman; Roger Allen, Clark E. Harris, Louis C. Kingscott, Warren L. Rindge.

Special Fund—Leo M. Bauer, Chairman; Paul B. Brown, Robert F. Hastings.

Chapter Boundaries — Talmage C. Hughes, Chairman; Amedeo Leone Peter Vander Laan, Frederick E. Wigen.

Inter-Professional Council—Amedeo Leone, Chairman; Leo M. Bauer, Talmage C. Hughes.

Technical Problems—Eugene T. Cleland, Chairman; Adrian N. Langius, George L. W. Schulz, Eberle M. Smith, John C. Thornton.

Registration—Paul A. Brysselbout, Chairman; Alden B. Dow, Robert B. Frantz, James A. Spence, Frederick E. Wigen.

11th Annual Midsummer Conference, Grand Hotel, Mackinac Island, Aug. 5-7, 1954—H. Chase Black, Jr., Chairman.

APELSCOR — Charles B. McGrew, Chairman, Earl G. Meyer; Alternates—James B. Morison, Arthur O. A. Schmidt.

School Building Conference — Elmer J. Manson, Chairman; Carl C. F. Kressbach, Wilmar F. Nuechterlein, Walter B. Sanders, Peter Tarpata.

OFFICIAL PUBLICATION—Western Michigan Chapter, A.I.A.: Peter Vander Laan, President; Hubert W. Van Dongen, Vice-president; Raymond I. Olson, Sec.-Treas.; Elmer J. Manson, C. A. O'Bryon, Directors.

OFFICIAL PUBLICATION—Saginaw Valley Chapter, A.I.A.: Frederick E. Wigen, President; Willard E. Fraser, vice-pres.; Herman J. Klein, Secretary; A. Charles Jones, Treasurer.

### including national

## architect

OFFICIAL PUBLICATION—National Council of Architectural Registration Boards.

Charles E. Firestone, Canton, O., President; Fred L. Markham, Provo, Utah, 1st Vice-president; Bartlett Cocke, San Antonio, Texas, 2nd Vice-president; Edgar H. Berners, Green Bay, Wisc., 3rd Vice-president; William L. Perkins, Chariton, Iowa, Secretary-treasurer.

Executive Committee consists of aforementioned officers and Roger C. Kirchoff, Milwaukee, Wis. Council Board of Review: Walter F. Martens, Charleston, W. Va.; Lusius R. White, Jr., Baltimore, Md.; Ralph Edward Winslow, Troy N. Y.

OFFICIAL PUBLICATION—Detroit Chapter of The American Institute of Architects: Amedeo Leone, President; Sureen Pilafian, V-president; Gerald G. Diehl, Secretary; Leo I. Perry, Treasurer; Louis Rossetti, Paul B. Brown, Maurice E. Hammond, Eero Saarinen, Directors; Talmage C. Hughes, Executive Secretary.

Listed in Standard Rate & Data Service. For further information, see page 1.

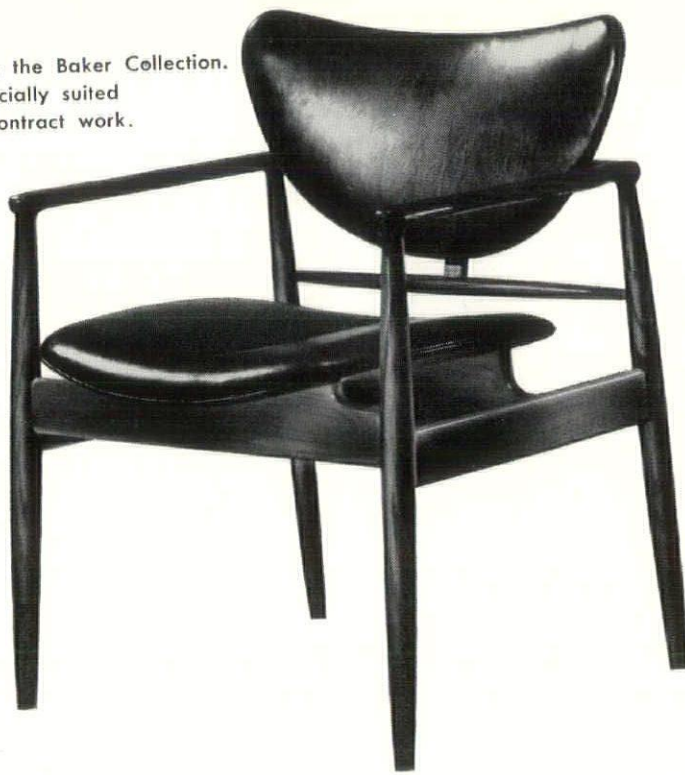
Theodore G. Seemeyer, Jr., Advertising Director; 120 Madison Avenue, Detroit 26, Mich. Woodward 5-3680.

Address all inquiries concerning National Council of Architectural Registration Board to William L. Perkins, Secretary-treasurer, 736 Lucas Ave., Chariton, Iowa.

Subscription \$3 per year (members \$1.50). 30c per copy (Rosters \$1).



From the Baker Collection.  
Especially suited  
to contract work.



**BAKER FURNITURE, INC.**  
Holland, Michigan

**CHICAGO**  
6TH FLOOR MERCHANDISE MART

**NEW YORK**  
THE MANOR HOUSE  
385 MADISON AVENUE

**LOS ANGELES**  
8778 BEVERLY BOULEVARD

SHOWROOMS: EXHIBITORS BUILDING, GRAND RAPIDS 2, MICHIGAN

## fellows

Twenty-one members of the Institute have been elected by the Jury of Fellows for advancement to Fellowship, at the 86th Convention in Boston. They are:

Roger Allen, Grand Rapids; Adolph Otto Budina, Richmond, Va.; J. Roy Carroll, Jr., Philadelphia; Harry Royden Dowswell, New York; Sanford Williams Goin, Gainesville, Fla.; Percival Goodman, New York; Walter Gropius, Cambridge, Mass.; Samuel Eldon Homsey, Wilmington, Del.; Eugene F. Kennedy, Jr., Boston; Juan F. Nakpil, Manila, P. I.; Donald Siegfried Nelson, Dallas; George Holmes Perkins, Philadelphia; Harry Irvin Schenck, Dayton, O.; Irving G. Smith, Portland, Ore.; Stanley Albert Smith, Pullman, Wash.; Louis Philippe Smith, Roanoke, Va.; Herbert Madison Tatum, Dallas; Ludwig Mies van der Rohe, Chicago; Royal Barry Wills, Boston; William Wilson Wurster, San Francisco; Marion Sims Wyeth, Palm Beach, Fla.

Albert Simons of Charleston, S. C. was chairman of the Jury of Fellows when it met in Washington, D. C. in March. Other members: William J. Bain, Seattle; John F. Harbeson, Philadelphia; Alexander C. Robinson, III, Cleveland, O.; Douglas William Orr, New Haven, Conn.; Thomas D. Broad, Dallas.

## bulletin

Would you inform me whether any action has ever been taken relative to the advertising by engineers and draftsmen-designers in the Detroit News want ads under the heading "Architect Drawings?" It is not good that architects have to offer explanations and otherwise laugh off the competition of engineers and draftsmen-designers who offer services from \$5.00 to \$25.00 for residential and commercial work. Not that I believe that this can be done by them, but I do believe that architects should be prompted to a comparison or a defense in contrast. I am primarily motivated by the reason of action which shall offer architects competing in this field, the proper minimum architectural fee necessary to good practice.

Specifically, I propose that the Detroit News be restrained from capping a column of its want ads under the heading Architect Drawings with advertisements listing the services of engineers and designers. Further, I would ask that the Detroit Chapter of The A.I.A. publicly notify its members that such advertising practices by both members and non-members alike is specifically condemned.

I regret that an exceedingly large number of engineers, designers, et al think that we as architects are woefully negligent in our interests and no longer can offer competition in the residential, commercial and light industrial field. Thus the presumption to provide what they deem equivalent services at cut-rate prices and with disdainful consequence and unflattering mockery.

I believe it is high time the Mickey Spillanes of architectural infringement are brought to the realization that in order to practice architecture, one should qualify first as an architect.

Berj Tashjian

## advertisers

Abstract & Title Guaranty Co.	28	Hutton, Robert & Co., Inc.	53
Ace Sprinkler Co.	54	Kimball & Russell, Inc.	13
A.I.A. Monthly Bulletin (Books)	26	Koehler Bros.	50
Allied Steel & Conveyors, Inc.	24	Kurtz Brick Co.	30
Aluminum & Architectural Metals Co.	52	Mack Iron Works Co.	53
Rack, Wm. F. Lumber Co.	52	Mahon, R. C. Co.	4th Cover
Baker Furniture, Inc.	4	Martin, F. H. Construction Co.	52
Besser Mfg. Co.	2	Mercier, John A. Brick Co.	51
B & L Electric Co.	55	McDonnell & Miller, Inc.	32
Boales, Wm. G. & Associates, Inc.	32	McDonnell Bros., Inc.	32
Bonded Guard Services	32	Leggette, R. E. Co.	55
Bortolotti, Wm. & Sons	28	Long Sign Co.	49
Burke, O. W. Co.	49	Michigan Asphalt Paving Assoc., Inc.	26
Busby, John H. Co.	49	Michigan Consolidated Gas Co.	24
Candler, J. D. Roofing Co., Inc.	49	Michigan Drilling Co.	50
Candler, Wallace, Inc.	50	Midwest Architectural Medals Co.	53
Century Brick Co.	56	Miller, A. J., Inc.	55
Chem Brick	20	Monthly Bulletin (Books)	34
Cinder Block, Inc.	18	Moynahan Bronze Co., Inc.	52
Commercial Contracting Corp.	3rd Cover	Nardoni Cement Floor Co.	2nd Cover
Concrete Pipe Assoc. of Michigan	22	National Architect (Books)	28-50
Couse, Walter L. & Co.	51	Nelson Co.	51
Darin & Armstrong, Inc.	52	Panaview	32
Den Braven, M. Co.	52	Peterson Window Corp.	14
Detroit Acoustical Contracting Co.	55	Plastic Products Co.	53
Detroit Brick & Block Co.	20	Plastoid	53
Detroit Edison Co.	31	Portland Cement Association	8
Detroit Fiberglass Insulation Co.	15	Restrict Lumber Co.	52
Dickinson, H. H. Co.	51	Rogers, Maurice V. Co.	51
Diebold, Inc.	50	Sauer, Otto H. Co.	54
Dow Corning Corp.	6	Schaafsma's	55
Dunn-Rainey Co.	53	Sibley, F. M. Lumber Co.	52
Farnell, B. F. Co.	54	Smith-Maynard Electric	30
Fireside Printing & Publishing Co.	26	Spence Brothers	18
Fort, G. Co.	34	Standard Building Products	32
Flint Mosaic Tile & Terrazzo, Inc.	56	Stevens, Frederic B., Inc.	30
Freeman, John H. Co.	12	Taubman Co.	55
Friendship Window Sales	22	Thomas Brick & Tile Co.	49
Grace Harbor Lumber Co.	52	Timber Structures, Inc.	28
Hamill Electric Co.	54	Turley, W. E. Co.	49
Hamill, N. W. Co.	55	Turner-Brooks, Inc.	54
Hanley Co.	50	Turner Engineering Co.	55
Harlan Electric Co.	1	Vallett, Walter Co.	30
Harty, R. V. Co.	26	Vibrapac	2
Haven-Busch Co.	20	Westover-Kamm Co.	34
Heineman & Lovett Co.	51	Wilkins, M. H. Co.	54
Hendrick, R. C. & Son	53	Whitcomb-Bauer Flooring, Inc.	56
Hoge-Warren-Zimmermann Co.	54	Wolverine Marble Co.	56
Horn Fuel & Supply Co.	18	Young, Ben T. Waterproofing Co.	54
Huron Portland Cement Co.	34		



# **national architect**

**official publication, national council of architectural registration boards**

## **OFFICERS:**

Charles E. Firestone F.A.I.A., President,  
Canton, Ohio

Fred L. Markham, 1st V-Pres., Provo, Utah  
Edgar H. Berners, 2nd V-Pres., Green Bay,  
Wis.

Joe E. Smay, 3rd V-Pres., Norman, Okla.  
William L. Perkins, Sec.-Treas., 736 Lucas  
Ave., Chariton, Iowa

## **EXECUTIVE COMMITTEE:**

Aforementioned officers and  
Roger C. Kirchoff, Milwaukee, Wisconsin

## **COUNCIL BOARD OF REVIEW:**

Walter F. Martens, Chm., Charleston, W.  
Va.

Lucius R. White, Jr., Baltimore, Md.

Ralph Edward Winslow, Troy, N. Y.

## **new book by ben john small**

Ben John Small, A.I.A., is author of a new book, "Architect's and Engineer's Check List," soon to be published by Reinhold Publishing Corporation. This is Small's third book published by Reinhold. The other two were "Streamlined Specifications Standards" and "Architectural Practice," the latter co-authored by Prof. Clinton H. Cowgill of Virginia Polytechnic Institute. Small is also collaborating with Mr. Louis Axelbank, M. E. on a book scheduled this fall, which will constitute volume two of "Streamlined Specifications Standards," and will cover standard specifications for the mechanical trades.

"Architect's and Engineer's Check List" is an exhaustive check list for architects, engineers, specification writers, job captains estimators and checkers, in a format consistent with final specifications. It covers 74 different subjects in considerable detail. Also included is an easy-to-read analysis of the "A.I.A. General Conditions" in which the responsibilities of

owner, architect and contractor are highlighted. There is also a yes-and-no list of pitfalls and warnings to those concerned with the preparation of drawings and specifications, as well as a check list of 11 classifications of equipment, such as for food service, hospital, laundry, library, office, playground, church, prison, school, barber and beauty shops, and theatres.

Mr. Small is well known to the profession. He is a partner in the architectural firm of LaPierre, Litchfield & Partners (Alfred Hopkins & Associates) who designed Thule Air Force Base in Greenland and many schools and hospitals in this country, South America, Burma and Iran. Mr. Small's "Streamlined Specifications Standards" is a best-seller, and the Bulletin has handled hundreds of copies.

The new book, which will be at low cost, will be announced in the Bulletin when available.

## **architects in the news**

### **arizona**

GORDON M. BUTLER, Dean Emeritus of the College of Engineering of the University of Arizona, was made an Honorary Member of the Arizona Chapter, A.I.A. at its recent annual meeting, for his "outstanding contribution to the legal and engineering phases of architecture in the State." Mr. Butler served from 1921 to 1952 as a member of the State Board of Technical Registration for Architects and Engineers.

Officers elected: Ralph Haver, President; Frederick O. Knipe, Vice-President; James W. Elmore, Secretary; Josias T. Joesler, Treasurer; Executive Board: Lew Place, Richard Drover, Gordon M. Luepke, Haver and James Elmore.

### **california**

WILLIAM WILSON WURSTER, A.I.A., to be made a Fellow of The A.I.A. at its Boston Convention, has been appointed a Fellow of the Royal Academy of Fine Arts in Copenhagen, Denmark. The Academy recently celebrated its 200th anniversary. It consists of 11 "Extraordinary" and 68

"Regular" members. Mr. Wurster is now Dean of the College of Architecture at the University of California in Berkeley.

DONALD BEACH KIRBY & ASSOCIATES, Architects and Engineers have opened offices at 1209 Burlingame Ave., San Mateo, Calif. Kirby's associates are Ted Richard Moulton, A.I.A., Baird Heffron, C. E., and a staff of architects, senior draftsmen and consultants. The firm of Kirby & Mulvin is located at 109 Stevenson St., San Francisco, Calif.

### **district of columbia**

THEODORE IRVING COE, F.A.I.A. Technical Secretary of The A.I.A., announces the jury for the A.I.A.-Producers' Council Product Literature competition for 1954 as Architects Ben John Small, Richard M. Bennett, Edward G. Conrad, D. Kenneth Sargent and Howard Dwight Smith. The Jury met in Washington April 26-27. Winners will be announced at the A.I.A. Convention in Boston, June 15-19.

THE 1954 MEDAL AWARDS OF THE A.I.A. to be presented at the Boston Convention: Fine Arts Medal to Julian Hoke Harris,

Atlanta; Craftsmanship Medal to Maria Montoya Martinez, San Ildefonso, New Mexico. Honorary Memberships will be awarded to Morton O. Withey of Madison, Wisconsin, and Dr. Richard Eugene Fuller of Seattle, Washington. The Gold Medal is not to be awarded this year.

### **georgia**

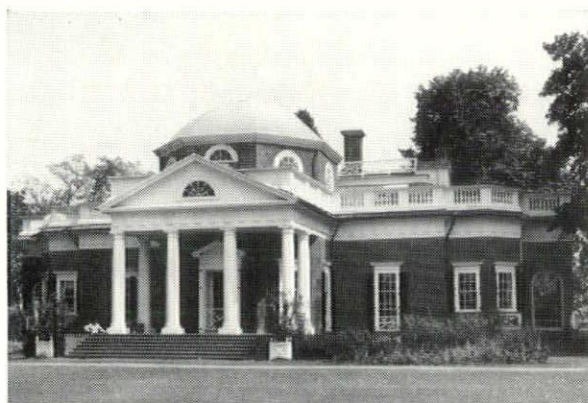
D. COLLIER HOUSTON, of Albany, Ga., has been appointed to the Georgia Art Commission by Governor Talmadge. Edward A. Moulthrop, A.I.A., of Atlanta, is also a member of the Commission. Houston, a graduate of the School of Architecture, Alabama Polytechnic Institute, at Auburn, is an associate member of the Georgia Chapter, A.I.A. His firm is D. Collier Houston & Associates, Architects.

### **illinois**

ILLINOIS INSTITUTE OF TECHNOLOGY students are making the first thorough study of the work of Louis Sullivan, foremost architect of the "Chicago School" at the turn of the century. More than 1000 photographs of Sullivan's work are being shown in the design school auditorium. Material from the exhibition will be preserved in published form for use of students of the future:



**old**



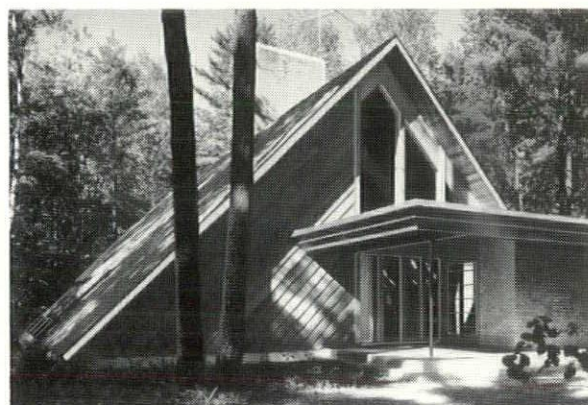
Milton L. Grigg,  
FAIA, Architect

R. E. Lee & Son, Inc.  
General Contractors

An important feature of the restoration of Monticello, home and monument of Thomas Jefferson, is the thorough treatment of all exterior masonry with a silicone water repellent.

DARACONE MADE BY DEWEY & ALMY; APPLIED BY BRISK WATERPROOFING CO., INC.

*or*  
**new**



Alden B. Dow,  
AIA, Architect

Arvo Nurmi,  
Painting Contractor

Silicone treatment protects the entire masonry walls of this modern woodland residence exposed to high humidity, rain, and sub-zero weather.

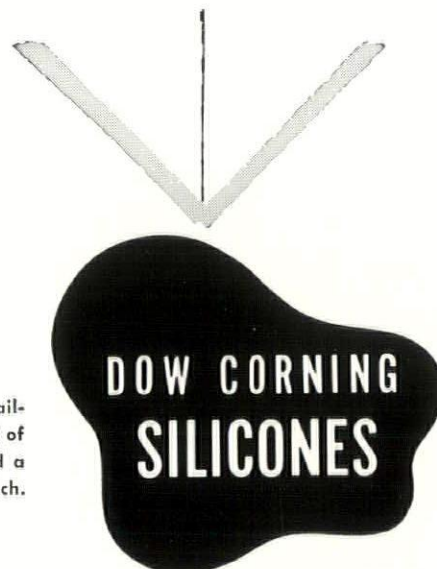
WATER REPELLENT, TRUSCON'S SUPER FOR SEAL WITH SILICONE.



**A water repellent treatment made with**  
*Dow Corning Silicones*  
**preserves the beauty, cuts maintenance costs**

On new construction or restorations, leading architects agree: above grade masonry walls are made more weatherproof, and retain their original beauty longer when treated with water repellents made with Dow Corning Silicones. Completely invisible and non-plugging, silicones do not change the color or porosity of treated surfaces. Water washes dirt off, not into, the surface. Staining, streaking, spalling and efflorescence are minimized or eliminated entirely. And the treatment costs very little; remains effective for years.

Dow Corning silicone-based water repellents are now available from formulators and their distributors in every part of the country. Write Dept. EN-17, for more information and a list of suppliers. Dow Corning Corporation, Midland, Mich.





## indiana

YEAGER ARCHITECTS has moved into its own newly remodeled building at 822 Ohio Street, Terre Haute, Indiana. The firm is headed by Ralph O. Yeager. His sons, Ralph O. Yeager, Jr., and Murray P. Yeager, are associated with him as architects. Other associates are S. M. Hanning structural engineer; John D. Power, M. E. and Mrs. Juanita Clotfelter, general secretary and office manager.

## kansas

GLENN BENEDICT, of Wichita, is the new president of the Kansas Chapter, A.I.A. John Brown is the new vice president. Robert Mayberry was elected secretary, and William Harrison, treasurer. New directors are Arthur B. Harris, Thomas H. Peddie and Charles Marshall. A Wichita Section of the Chapter has been established.

EARL H. WILSON AND ROBERT E. EARNHEART, Architects, have moved into a new building of their own design at 1645 Washington Boulevard, Kansas City. The firm has its offices on the second floor, the first floor being rented to doctors and dentists.

## louisiana

G. LEWIS DUNN, A.I.A., of Dunn & Quinn, Architects, Lake Charles, La., was chosen "Boss of the Year" by members of Port Chapter, National Secretaries Association.

## montana

HOILAND & LUND, ARCHITECTS is a new firm composed of A. Calvin Hoiland and Robert K. Lund, at 306 Electric Building Great Falls, Montana.

## ohio

BELLMAN, GILLETT & RICHARDS, Architects, of Toledo, O., announce that John Gillett has retired from the firm, after being with the organization 41 years and a partner for 32 years.

In addition to John N. Richards, other partners are George H. Erard and Michael B. Oshea, both A.I.A.; Orville H. Bauer, in charge of design; Raymond A. Etzel, production manager and Robert C. Moorehead, administrative engineer.

Associates are H. Lee Smith, Architect; Fred H. Speirs, electrical engineer and David L. Todd, structural engineer. Three new associates have been added: George F. Blamey and Robert M. Lutz, architects, and Leland E. Moree, specification writer. The firm, which began 62 years ago, is one of the oldest and largest in Ohio.

JOHN J. RIETZ, A.I.A., announces the opening of new offices at 210 North Sixth Street, Steubenville, Ohio.

## oklahoma

JOHN BOZALIS, A.I.A., has been named to the City Plan Commission of Oklahoma City. Bozalis is a partner with Leonard H. Bailey, F.A.I.A. in the architectural firm of Bailey & Bozalis, of Oklahoma City.

LENNART BRANDBORG, of Koberling & Brandborg, Architects, is the new chairman of the Architectural League of Tulsa, Oklahoma. He succeeds F. Allen White-side, A.I.A., of Black & West, Architects. David G. Murray is the new secretary. He succeeds John M. Slattery, A.I.A.

## mississippi

THOMAS S. JONES, of Starkville, Miss., has been elected president of Mississippi Chapter, A.I.A. He succeeds Harry Haas of Jackson. Joseph T. Ware was elected vice-president; Charles Dean, secretary-treasurer. Delegates named to the Boston Convention: N. W. Overstreet, John L. Turner, James T. Canizaro, E. L. Malvaney, Thomas Jones and William Allen. Frank Gates is alternate.

## new york

JOHN HANCOCK CHANDLER, A.I.A. Chairman of The Architectural League of New York, Jury of Awards, announces that the League will award Certificates of Merit to architects and builders of houses selected as "symbolizing the great progress made in residential building and housing design."

The awards will be made in conjunction with "Building Your Home, 1954," a public and trade exhibition of the home building industry's progress, sponsored by The League, to be held in New York City, May 27 - June 6.

Serving on the Committee: Douglas Haskell, Edward Stone, George Cooper Rudolph and Daniel Schwartzman, League President.

QUEENS CHAPTER, A.I.A., has presented its Meritorious Service Award to John T. Kelleher, Queens Superintendent of the Department of Housing and Building. Building Commissioner Bernard J. Gilroy of Flushing presented the award. Simeon Heller, Queens Chapter president, was toastmaster.

NEW YORK STATE ASSOCIATION OF ARCHITECTS, A.I.A., and N. Y. Chapter, A.I.A., are sponsoring a public relations work shop presentation by Walter Megronigle and Anson Campbell of Ketchum, Inc., Institute P. R. Counsel, the evening of June 3 at The Architectural League, 115 E. 40th St., New York City. Harold R. Sleeper, a member of the national P. R. Committee of A.I.A., is chairman of N. Y. S. A. Public Relations Committee, and John W. Briggs is vice-chairman. Adolph Goldberg is president of the N. Y. S. A., and Harmon H. Goldstone is chairman of N. Y. Chapter's P. R. Committee.

BROOKLYN CHAPTER, A.I.A., has an active Civic Design Committee headed by Stanley Prowler. A sweeping series of recommendations to make Brooklyn a better place to live in has gained much praise from the City's Chamber of Commerce, Real Estate Board, the press and several civic organizations.

Winners in the Chapter's annual design competition were announced and prizes awarded by Education Committee chairman Thomas Philibert at a recent dinner meeting. First prize of \$100 went to Frank Marcellino and Stuart Cohen; \$50 second prize to Louis Goodman and

David Leibowitz; \$25 third prize to Jerome Neckler and Alfred Tomaiuolo. Subject: Redevelopment of a site for co-operative living in the Sea Gate section of Brooklyn.

## CORRECTION

In our April issue it was stated that George T. Hirsch had been elected president of the Westchester Chapter, A.I.A. This should have read Gerson T. Hirsch. Our apologies.

## texas

SAN ANTONIO CHAPTER, A.I.A., recently celebrated its 30th anniversary, at which 18 former presidents and officers were honored. Charles Huie, Jr., was reelected president, and Thomas B. Thompson was reelected first vice-president. Clarence Rinard was elevated to 2nd vice-president, and Allison B. Perry was elected secretary-treasurer. Directors are Elmer Freeborn, C. C. Simmons, DeHaven Pitts and Reginald Roberts.

LEONARD LUNDGREN, a young architect, has been elected president of the Austin, Texas Junior Chamber of Commerce. Lundgren had served the past year as vice-president.

## utah

B. E. BRAZIER, A.I.A., of Ashton, Evans & Brazier, of Salt Lake City, has been named president of the newly organized Utah Construction Council. Brazier is president of the Utah Chapter, A.I.A.

## washington

SOUTHWEST WASHINGTON CHAPTER, A.I.A., has been chartered, with 30 members formerly of the Washington State Chapter. Nelson J. Morrison is president of the new Chapter; Gilbert J. Wojahn, first vice-president; Robert H. Wohleb, 2nd V. P.; Gordon N. Johnston, secretary, and Robert A. Parker, treasurer. Directors: Silas E. Nelsen and Lyle N. Swedberg.

## died

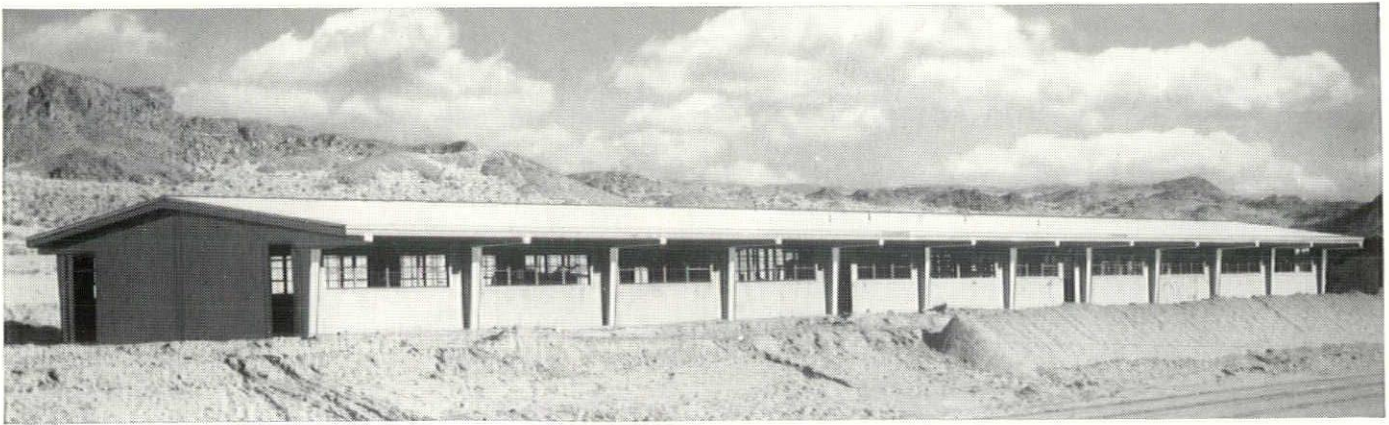
BENJAMIN O. BOYUM, A.I.A., 69, in his home City of Winona, Minn., March 12. Member of the firm of Boyum, Schubert & Sorensen, of Winona and La Crosse. His firm has done many schools and college buildings.

HARVEY WILEY CORBETT, F.A.I.A., 81, in New York, April 21. Senior architect on Rockefeller Center. He did important projects on both sides of the Atlantic.

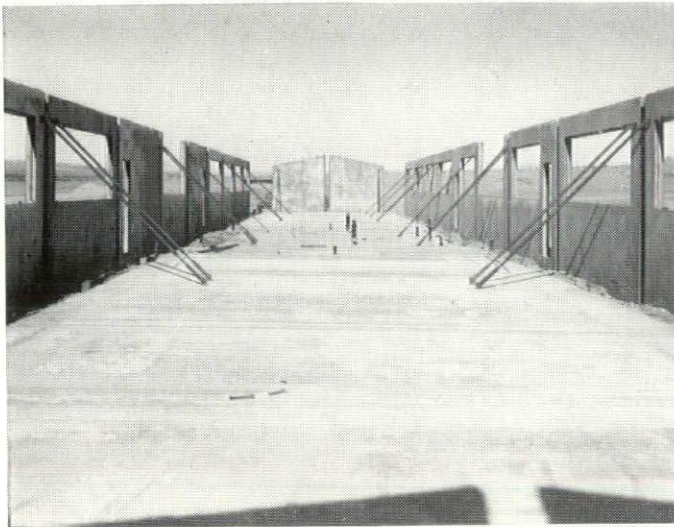
JOHN C. GRUNKEMEYER, A.I.A., 59, of Cincinnati, at his winter home in Fort Lauderdale, Fla., March 19. Member of the firm of Grunkemeyer, Sullivan & Isaacs Associates. A native Cincinnatian, he was a pilot in the Army Air Corps during World War I and he was active in many civic organizations.

MITCHELL SELIGMAN, A.I.A., 70, in his home City of Pine Bluff, Ark., Feb. 27. Member of the firm of Seligman & Reed, Pine Bluff. Born in Louisville Ky., and attended the University of Kentucky. Designed many schools as well as commercial buildings.

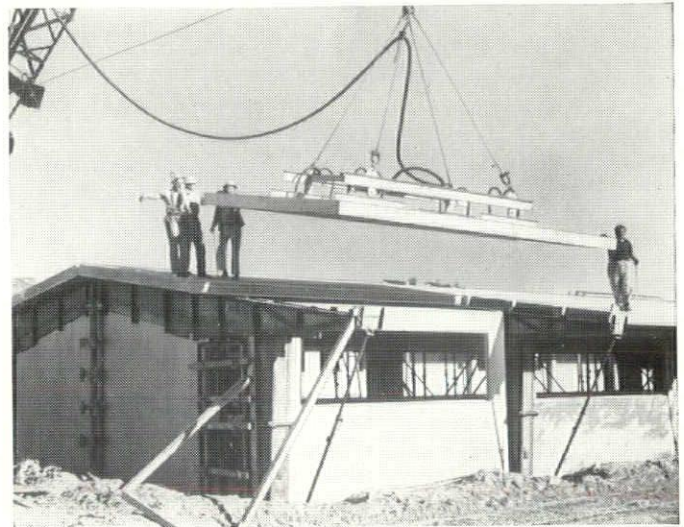




General view of one of the completed barracks buildings.



Construction view showing wall panels tilted up and braced.



Precast concrete roof slab being lowered into place.

## Speed and Economy of *TILT-UP CONSTRUCTION* Demonstrated in Huge Marine Corps Project

Precast, tilt-up concrete construction is giving taxpayers more permanent structures at no extra cost in the Marine Corps Artillery Training Center, Twentynine Palms, Calif. With more than 1½ million sq. ft. of floor area, this is one of the biggest precast concrete construction jobs ever undertaken.

For economy the original appropriation contemplated a type of construction often used for temporary structures. However, cost studies disclosed that durable, sturdy, precast concrete buildings could be constructed for the same appropriation.

Precast, tilt-up concrete construction provided extra values for the same money because it lends itself to simplification of detail, many reuses of a few basic elements and employment of production line methods for fabrication and erection. It offers such

additional advantages as firesafety, low maintenance cost, savings in construction time, use of economic materials and fabrication and construction methods equally adaptable to metropolitan centers or to relatively inaccessible areas.

These pluses apply not only to military projects but also to schools, hospitals, commercial and industrial buildings. Fast, economical, precast tilt-up concrete construction is equally adaptable to one story or multistory buildings.

For more information write for free, illustrated literature, distributed only in the U. S. and Canada.

Neptune & Gregory, Pasadena, Calif. were architects and engineers for the Twentynine Palms Marine Corps Artillery Training Center. A joint-venture firm, Twaits—Morrison-Knudsen—Macco, was contractor.

**P O R T L A N D C E M E N T A S S O C I A T I O N**  
OLDS TOWER BLDG., LANSING 8, MICHIGAN

A national organization to improve and extend the uses of portland cement and concrete through scientific research and engineering field work



# a.i.a. south american trek

(See pictures on following two pages)

By Louis G. Redstone, A.I.A.

Now it is like a dream, but a few weeks ago an exciting reality, when The American Institute of Architects Trek to South America started from Miami, Jan. 20th. This good-will and educational tour was planned to meet our fellow architects, to see their works and share with them our views on contemporary trends in Architecture.

The countries visited were in order: Panama, Peru, Chile, Argentine, Uruguay and Brazil. All of the South American countries are in the process of developing new forms of construction and design. In all countries this is manifested in the new schools of architecture, either under construction or recently completed. Observing the students' work in these new schools gives one great hope that the new generation will produce exciting structures expressive of their era. The educational system of teaching Architecture is based on developing original ideas starting from the freshman year.

As an example of this, a typical problem given to the freshman class in the College of Architecture in Montevideo, Uruguay, was to design a building with a minimum of supporting walls. The resulting models displayed in the drafting room were an extraordinary array of original conceptions in design. Even though some of the shapes would be impractical to build, nevertheless the possibilities of this kind of teaching of design showed us great promise for the future of these young students.

In Brazil, many of these new ideas have already been put into building forms, as seen in the new buildings erected for the Sao Paulo Centennial Exhibit, and many other buildings which are a part of the immense construction boom in Rio. To give an example of the feverish building activity in Sao Paulo, 1000 large multi-story buildings are currently under construction and it is said that a new large building is started every four hours.

Some of the characteristic features of the new construction are the large cantilevered canopies, concrete louvers for sun shading as well as movable and adjustable aluminum sun shades; precast concrete frames as well as precast concrete slabs used for the building facings in the same manner as we use stone or marble facings. Much attention is paid to the integration of art in architecture. Almost invariably, public

buildings including schools, and many of the new apartment buildings have well-designed mosaic murals, either on the outside wall or in the lobbies.

The boom in apartment building is stimulated by the advanced sale of each of the cooperative apartments. Because of the fact that some of the apartments occupy an entire floor, this system of apartment building is called "horizontal apartments." These are expensive, costing between \$20,000 to \$40,000 per unit. Considering the monetary inflation, it is out of reach for most of the middle class. To alleviate this situation, some of the municipalities, such as Sao Paulo and Rio, have started to build rental apartments for their own public employees. These projects are built in the form of complete neighborhood units, including schools, shopping and recreational facilities.

Rent is at a minimum average of \$20 per month. These cities have also built similar projects for the low income and welfare groups, with rents as low as \$10 a month.

Another interesting phase of development is the deep concern for city planning in every country. Each large city has its own extensive staff of city planners which is guided by the respective Federal Government. In the city planning field, we observed the similarity of the problems with those in the U. S.: the aims to safeguard the residential areas from thru traffic; to preserve and rehabilitate already existing areas to avoid slums; to create a system of highways for re-routing fast-moving traffic, etc. In places of historical importance, such as Cuzco, Peru, great care is being taken to preserve the existing character of the city and at the same time to integrate it with the new areas. Most of the architects who are engaged in city planning work half days for the government and half days in their own private practice or in teaching.

We were impressed with the important role of the Architect in the economic and political life of the countries. Each completed building carries the architect's name, in stone or bronze lettering in a prominent place. The Mayor of Buenos Aires is George Sabate, an outstanding architect who arranged a formal reception for us during our visit and provided us with all transportation facilities to visit the various construction projects in his city. In Montevideo, Uruguay, we were formally re-

ceived by Senator Terra Arocena, who is also President of the Uruguayan Society of Architects.

Although our trip was planned for us to see the contemporary trends in South American architecture, one of the most exciting experiences was our trip by plane and three hour railcar trip to Machu Picchu, seat of the lost City of the Incas. The inaccessible location amidst the towering Andes Mountains, the construction of the temples with huge stone blocks, the man made terraces hewn from the mountain sides, left us in awe and admiration for a culture that constructed in ways impossible for us to visualize even in these days of modern machinery and equipment.

From the Birmingham (Mich.) Eccentric

J. ROBERT F. SWANSON, A.I.A., and his wife, Pipsan Saarinen Swanson were among those visiting South America, with the recent A.I.A. trek.

The twelve architects and nine of their wives had an opportunity to get a new architectural perspective while traveling through Lima, Peru, seeing the contrast of Inca ruins, state capitals and busy seaports. At each stop they were met by delegations of local architects, and they were honored at many receptions and parties.

The Swansons were impressed with the amount of concrete construction there and the scant reinforcing steel used. They also remarked on the daring designs that require no screening or heating facilities. There was much open work, with patios and indoor-outdoor planning in evidence. Surprising them most was the modernization of Sao Paulo, said to be 400 years old. In the past 20 years this City has grown highly industrial, with modern office buildings 20 and 30 stories high.

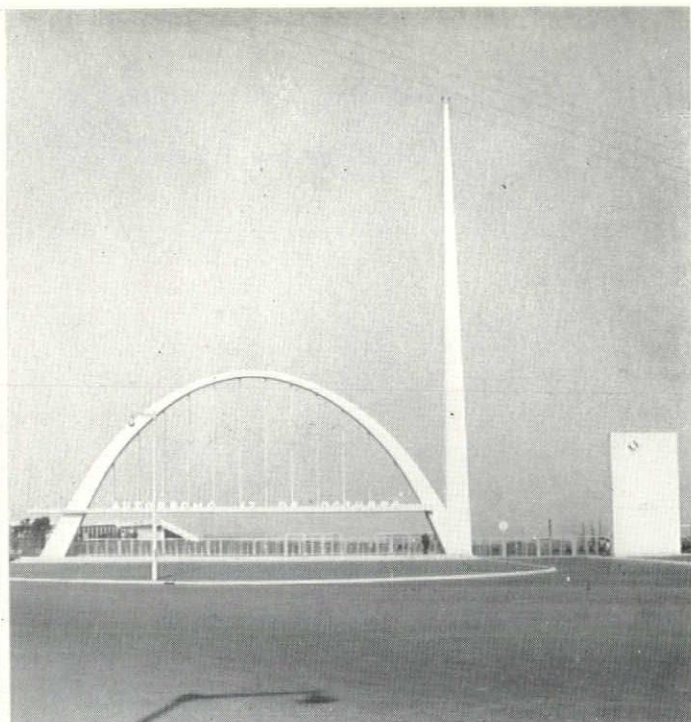
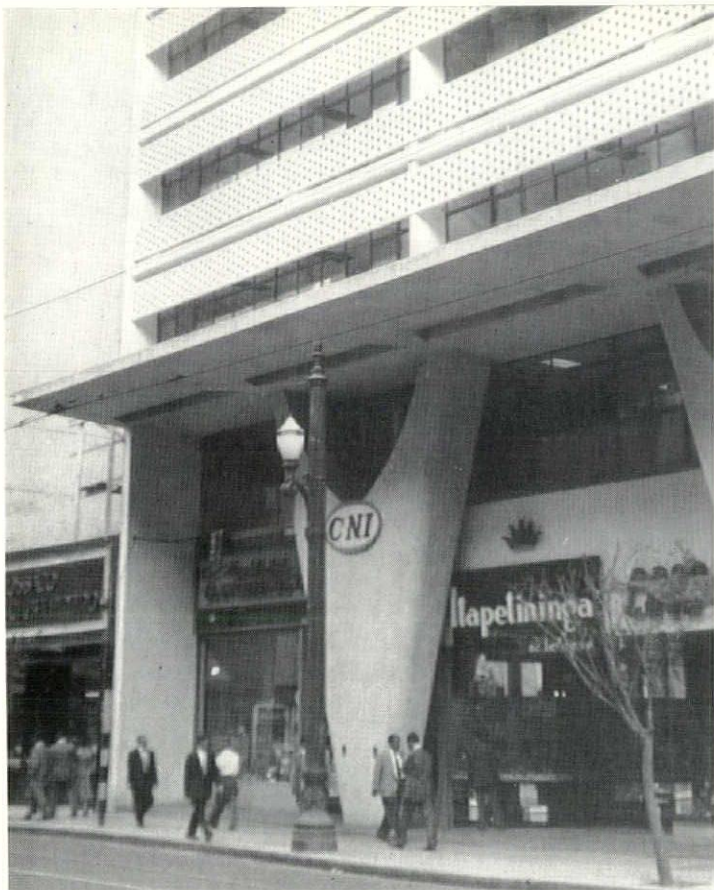
In the women's field, Pipsan reports that they are as progressive as their North American neighbors, with many famous engineers, doctors, lawyers and architects. Home life seemed to be much the same, however, with perhaps a little more emphasis on family activities.

Another thing that intrigued the Saarinens was the difference in ways of life within the country. In Uruguay, for instance, living seemed most pleasant, with the populace more stable and moving at a slow pace. There are no taxes there, the country getting its revenue from gambling casinos, which are State owned. Education is free to all, and does not stop at high school but continues through the universities.

The Swansons found Brazil a different story. There siestas are a thing of the past and people move with all the hustle and bustle found in any American metropolis. Most popular form of transportation is the European Jaguar, which costs less there than the American Ford. This situation may change soon, as Argentina is now manufacturing a car of its own, the only one to be made in South America.

As on most of their trips, the Swansons feel there wasn't time enough to see all they would like to, but still they managed to cover a great deal of territory in one short month, and enjoyed every minute of it, from the Inca ruins to skyscrapers.





## architects' trek to south america

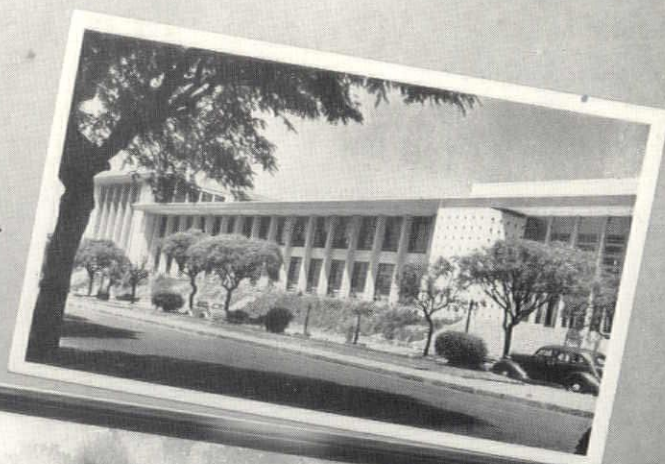
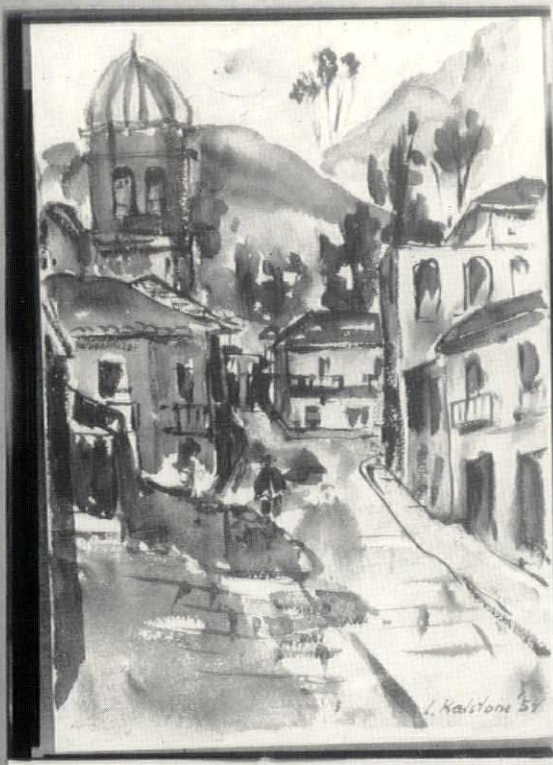
Upper left: V-shaped columns on this São Paulo building by Brazilian architect, Oscar Niemeyer are both decorative and functional.

Upper right: This unusual concrete gateway to the auto racing grounds in Buenos Aires exemplifies the masterful handling of that material by architects of South America.

Lower left: Pavilion of Modern Art, Centennial Exposition in São Paulo, as seen from open arcade of its twin building. Note diagonals supporting overhanging roof.

Lower right: Concrete Louvres are typical of the new construction. Here they are used in a new hotel building in Buenos Aires.





Upper left: Street scene, Cuzco, Peru; a water color by Mr. Redstone.

Upper right: University building, Montevideo.

Left center: Mr. and Mrs. J. Robert F. Swanson at reception in Montevideo.

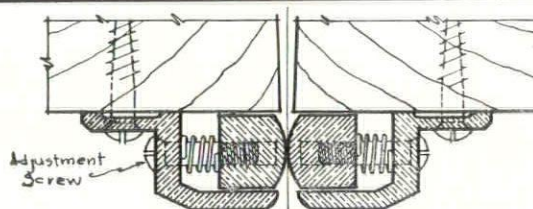
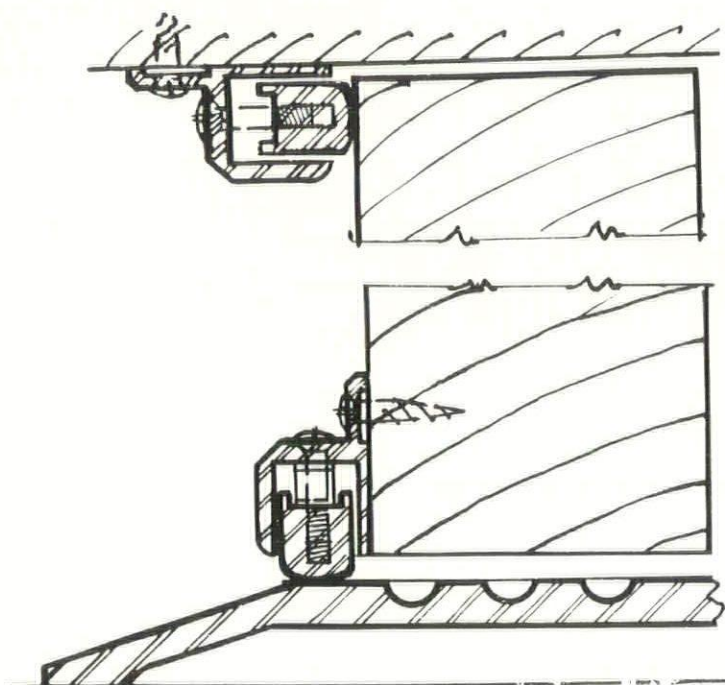
Right center: Sugar Loaf, Rio de Janeiro; water color by Mr. Redstone.

Bottom: The group at Montevideo Airport.



# MICHAELS

## adjustable astragals



TYPE (A)  
DETAIL FULL-SIZE

MADE IN 4 DIFFERENT TYPES  
TO FIT PRACTICALLY ALL DOOR AND  
JAMB CONDITIONS. TYPE "A" ILLUSTRATED

The system of weather stripping shown here was designed with the thought of compensating for the expansion and contraction of doors, and to close as nearly as possible a door of any type to prevent drafts, air currents, and keep out dirt and dust. This system is very simple, practical, sturdy, and easily adjusted, if necessary. It is made of extruded bronze and constructed of two members, operated and adjusted by special spring and screws located approximately 10" on center. The special adjusting screw has two small lugs under the head which mesh into corresponding grooves on the astragal to prevent the screw from moving by vibration.

*Michaels Astragals Are Made in Extruded Bronze Only*

FOLDER A.I.A.—27B  
AVAILABLE ON REQUEST

Distributed by

**JOHN H. FREEMAN COMPANY**

Builders Hardware • Contractors Supplies

3627 CASS AT BRAINARD, DETROIT 1, MICHIGAN  
TEMPLE 1-6760

## convention report

EXECUTIVE SECRETARY

Talmage C. Hughes

The work at your headquarters continues to increase from year to year.

We now have more than four times the office space of a few years ago, and a staff of eight people. This includes Neil Bertram who is on the Society's payroll. He works out of our office at the direction of President Smith and the Board of Directors. Neil is rendering a valuable service to the Society.

We have recently added to our staff Mr. Arthur A. Naylor, who has an excellent background in the publication field. Nick Demos has just returned to the circulation department after two years in Germany with the Army's occupation forces.

In addition to publishing the Bulletin, we serve members and draftsmen as an employment bureau, answer inquiries about architects, supply A.I.A. standard documents and the booklet, "Organizing to Build." There are many other miscellaneous activities.

After one year of the Bulletin in its redesigned format, we believe the change has proved desirable. While costs have increased, additional advertising has justified it.

We have obtained a prodigious amount of publicity, for which, as Neil can report, we have recently received national recognition. Mr. C. Allen Harlan has made available to the Detroit Chapter \$1,000 for a competition to determine the best method of conducting a public relations program for the Chapter, over a five-year period. The Detroit Chapter has just become incorporated after 67 years as an unincorporated body.

We have been working with the Michigan Bell Telephone Company toward improving the listing of architects in the Yellow Pages of the Detroit Directory. The past two issues have not been satisfactory, but I think you will agree that the next one is good. There will be no listing of non-registered people, no bold type, and practically all of our members will carry the extra line, "member American Institute of Architects." The Chapter will have a sizeable ad on the same page as the beginning of the list, explaining what The A.I.A. is and what it stands for. We have already had former members become reinstated because of this, and believe that non-member architects will want to join.

Your executive secretary has been appointed by President Linn Smith to a Committee on Chapter Boundaries, to study the inequities of Chapter territories in Michigan. It is believed that the Saginaw Valley Chapter can be strengthened by increasing its membership. Presidents of the three chapters are also on the Committee.

A recent survey of Detroit architects' offices indicates that, while some are experiencing a lessening of work, in general they are quite busy with programs that will extend into next year.

Michigan architects are giving a good account of themselves.





## metropolitan museum

"To look at a masterpiece," an ancient sage remarked, "is to touch the hand of genius."

At New York's Metropolitan Museum—America's greatest treasure house of art—the hand of genius is visible everywhere, but especially in the modern galleries opened after a three-year \$9,600,000 reconstruction program.

R. B. O'Connor and Aymar Embury, II, Associates, were the architects for the reconstruction of the three West Wings, as well as for the restaurant, administrative offices and adjacent areas.

Voorhees, Walker, Foley and Smith were architects for the new \$1,200,000 Grace Rainey Rogers Auditorium which opens to the public on May 12.

## letters

### Bulletin

The other day in a dentist's office my wife picked up a copy of "Inside Michigan" (March, 1954), and she was so impressed with your article that she prevailed upon the dentist to let her bring it home. After I had read it, I thought I should let you know what a nice job you have done in public relations for the architects. It was a very interesting article and your skillful working in of the names of various architects was very nicely done.

You are to be complimented on your continued and never-ceasing efforts for better public relations for our profession.

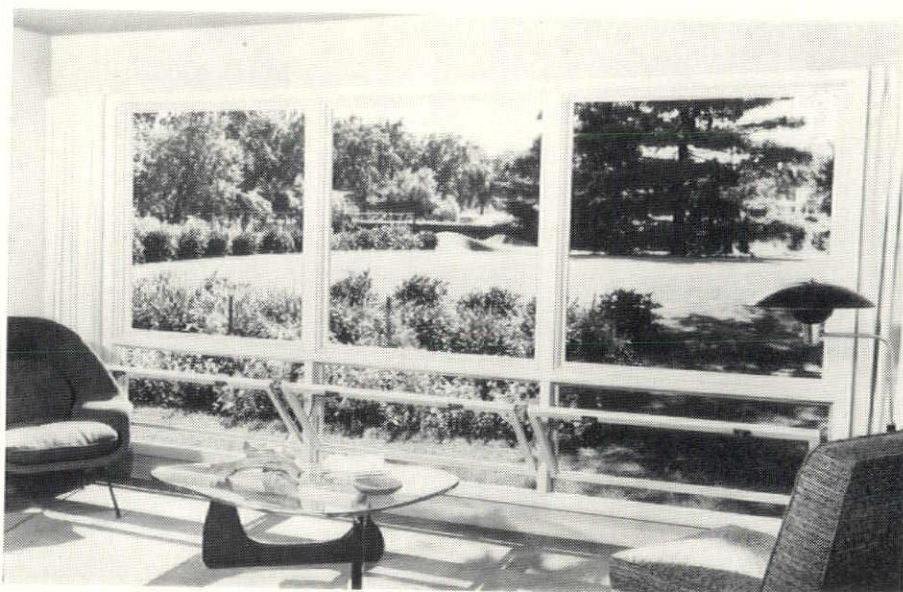
MALCOLM R. STIRTON

So that you and the rest of the gang will understand how deeply and sincerely I appreciate the flowers you so kindly sent to me at the hospital while I was down and out, from March 9 to April 6, I write this note of thanks to you.

I am at home now, learning to walk again, with the aid of a chair and a cane. Thanks again for your kind thoughts, your warm and friendly association.

FRANK H. WRIGHT

## Andersen Windowalls with FLEXIVENTS



WINDOWALL OF FLEXIVENTS AND FIXED UNITS

The most versatile window made! That's Andersen Flexivents. Shown above in hopper position with large fixed units they form a perfect, ventilated Windowall.

Designed in standard size units they are easily adaptable to any style architecture. Made of the finest woods they can be finished to match any decorative scheme. You'll find Andersen Flexivents in both large and small homes everywhere.

There is a complete stock of Flexivents, available for immediate delivery, at the Kimball and Russell warehouse.

DETAILS OF ALL ANDERSEN WINDOW UNITS AVAILABLE ON REQUEST.

Sold only through retail lumber dealers

**KIMBALL AND RUSSELL INC.**  
Wholesale Distributors

2127 FENKELL AVE DETROIT 38, MICH • UN 1-3480





Above are shown before-and-after views of the women's apparel department of Kline's Department Store in Detroit. Remodeling was done by Detroit architect Arthur O. A. Schmidt, A.I.A.

Significant is the fact that the Acusti-Luminus Ceiling covers the entire sprinkler system. The material falls away at 145 degrees, leaving the sprinkler heads to operate when temperature reaches 165 degrees.

WILLIAM W. LYMAN, JR., A.I.A., has transferred his membership in The American Institute of Architects from the Massachusetts Chapter to the Detroit Chapter.

C. ALLEN HARLAN, President of Harlan Electric Company, was honored by Bethany College of West Virginia, in a ceremony at Detroit's Botsford Inn, April 10, marking the college's 114th year. Harlan, recently named a trustee of the College, has founded a scholarship fund for Bethany.

WALTER VALLET COMPANY, dealers in hot water heaters since 1919, has moved to new and larger quarters at 12151 Coyle Avenue, Detroit 27. The new telephone number is BRoadway 3-9500.

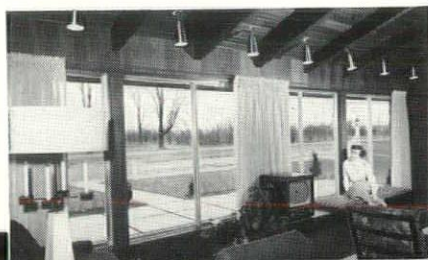
HYDON-BRAND COMPANY, electrical contractors, announce removal to their own new building at 5330 East Davison Avenue, Detroit 12, Michigan.

N. W. HAMILL, President of the Company that bears his name, has been elected President of the Carpenter Contractors' Association of Detroit. He succeeds Charles Reisdorf. Others elected are Joe Bauer, Vice-President; Wallace Dubey, Treasurer; and Glen James, Secretary. Directors are Bob Van Sile, Lyle Eiserman and Reisdorf.

ALBERT BEEVER has been elected President of the Detroit Building Employers Labor Relations Council. Also elected: Lyle E. Eiserman, Vice-President; R. Douglas Shaw, Treasurer and John E. Kinsella, Secretary.

## Cheerful, Comfortable INTERIORS Beautiful, Modern EXTERIORS !

GIVE YOUR CLIENTS  
BOTH WITH ....



# Peterson HORIZONTAL SLIDING Aluminum Windows

### Check These Outstanding Features

#### ROLLS OPEN

Easy horizontal operation, precision bearing rollers.

#### SAVES MAINTENANCE

Requires no paint. Won't rust, swell, warp, stick or rot.

#### WEATHERPROOF

Hi-pile, water and wear resistant weatherstripping cuts heating costs.

#### SMART STYLING

Enhances all motifs.

#### EASILY CLEANED

Sliding sash removes into room for easy washing.

#### SAFE

Positive locking in closed, one, two and three inch open positions.

#### ADVANCED DESIGN

Eliminates putty, sash balances, cranks, hinges.

#### FURNISHED COMPLETE

Built-in storms and screens, if desired.

### 50 STANDARD SIZES

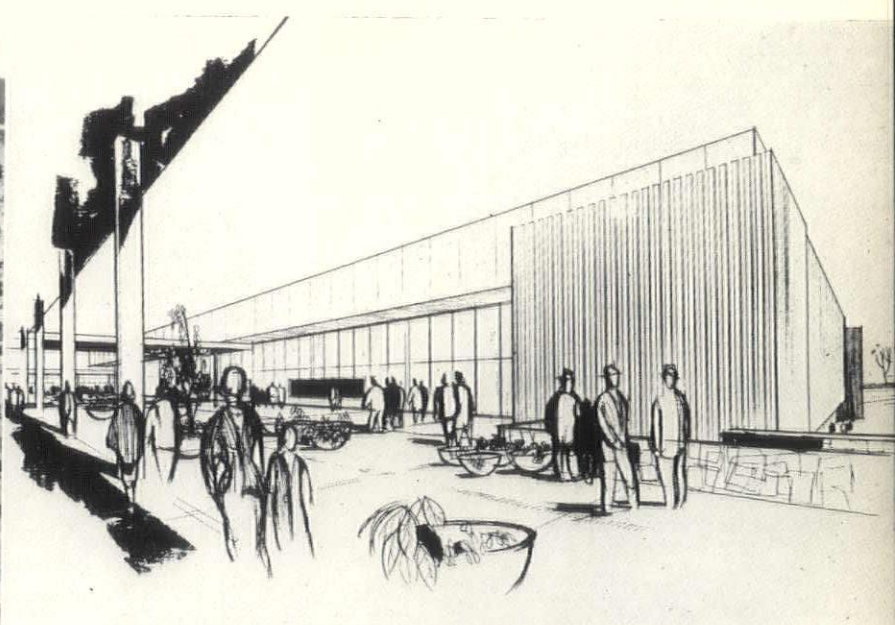
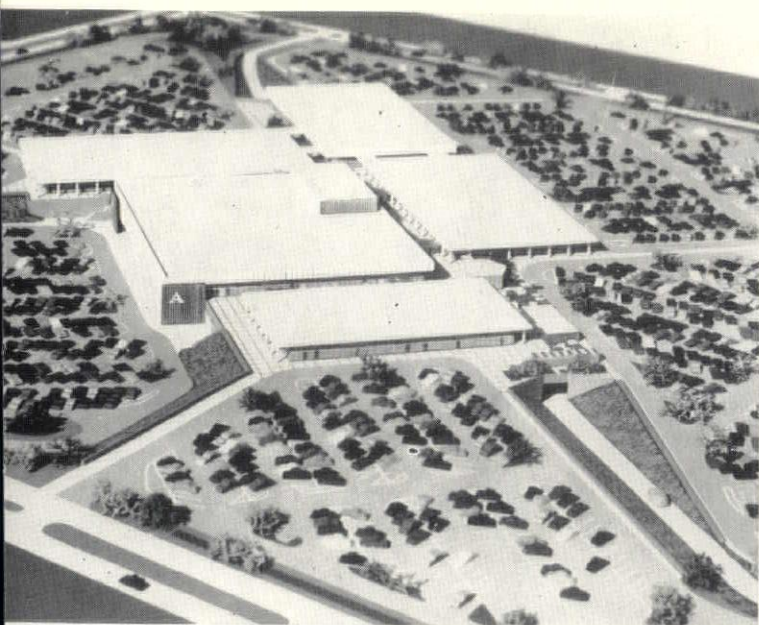
All designs and sizes popularly specified for residential, commercial and monumental buildings supplied promptly. Standard windows up to 6' in height and 10' in width are available. Special sizes can be obtained at slightly higher cost. Constructed of sturdy aluminum extrusions—63S-T5 Alloy, minimum thickness .062"—engineered for maximum strength.

# PETERSON

WRITE FOR  
LITERATURE AND NAME  
OF NEAREST DEALER

**Peterson Window Corp.**  
1365 E. EIGHT MILE ROAD  
FERNDAL 20, MICHIGAN





Victor Gruen, A.I.A., has designed this \$7,000,000 Glendale shopping and community center on a 45-acre site near Indianapolis, Ind. It will house the L. S. Ayers & Co. Department Store and 45 other units.

Ground will be broken in 1955 and it is estimated that the center will be completed in 1956.

## architects' golf league

With fair weather now in prospect, members of the Detroit Architectural Golf League will tee off for their first tournament of the season, at Meadowbrook Country Club, Tuesday, May 18, at 1:30 p.m. This organization, which began last year, with 23 charter members, expects to have about 100 members this season. George Sommers, of Jahr-Anderson, Associates, Inc., is president.

Annual dues of \$5.00 are payable to Sam Ross, of Snyder & McLean, 2214 Penobscot Bldg., Detroit 26, on or before May 18. According to regulations, a member is free to play at any course he chooses, provided he is accompanied by another member of the League. To be eligible for awards at the first tournament, a member must have played at least two 9-hole rounds.

Score cards for each qualifying round must be signed by one other member of the league, and forwarded to Verne Isenhardt, 320 W. Lafayette Blvd., Detroit 26. Greens fees for each tournament will be \$3.50, which will permit a member the full use of club facilities for an entire day, including swimming pool, locker room, grill, etc.

The second tournament will be held at Western Country Club, June 29; the third at Meadowbrook, July 20; the fourth also at Meadowbrook, Aug. 24; the fifth and final tournament and banquet at Western, Sept. 14.

Membership applications may be obtained from Ray McDonnell, of Hyde & Bobbio, 320 W. Lafayette Blvd., Detroit 26.

**STRIA**  
fiberglas  
LATEST DESIGN IN ACOUSTICAL TILE



THE BOOK CASINO LOUNGE  
SHERATON-CADILLAC HOTEL, DETROIT

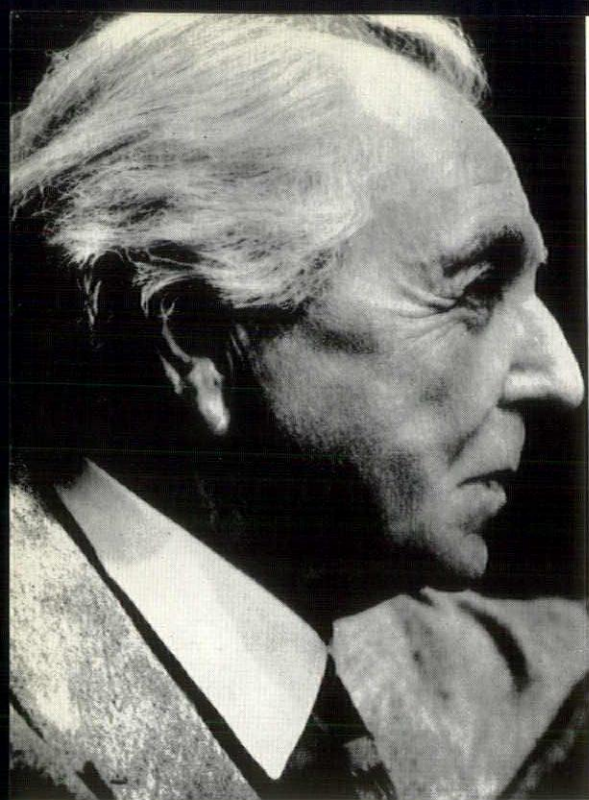
ALL  
TYPES  
OF  
ACOUSTICAL  
TREATMENTS

**Detroit Fiberglas Insulation Co.**

ACOUSTICAL & INSULATION CONTRACTORS

14360 Livernois TO. 9-6340 Detroit 4, Mich.





presenting a lecture at  
**MASONIC TEMPLE, DETROIT**  
 Thursday, May 27, 1954, eight-thirty p.m.

**AIA**

sponsored by  
 The American Institute of Architects,  
 Detroit Chapter, 120 Madison, WO. 5-3680

T A L I E S I N



# FRANK LLOYD WRIGHT

THE WORLD-FAMED ARCHITECT IN ONE  
 OF HIS RARE DETROIT APPEARANCES

All Seats Reserved. Prices are All-Inclusive. Mail Orders Will Be Promptly Filled With the Best  
 Seats Available at the Price. Make up your Theatre Party and order Tickets NOW.

THE AMERICAN INSTITUTE OF ARCHITECTS, DETROIT CHAPTER  
 120 Madison Avenue, Detroit 26, Michigan. WO. 5-3680.

I desire tickets to the Frank Lloyd Wright Lecture at the Masonic Temple, Detroit, Thursday,  
 May 27, 1954, 8:30 p. m., indicated below, payment for which accompanies this order.

- |   |               |          |
|---|---------------|----------|
| <input type="checkbox"/> Boxes                      | No. of People | @ \$2.50 |
| (4, 6, 8 People; Boxes Adjacent for Larger Parties) |               |          |
| <input type="checkbox"/> Orchestra Center           | No. of People | @ \$2.50 |
| <input type="checkbox"/> Orchestra Circle           | No. of People | @ \$2.50 |
| <input type="checkbox"/> Orchestra Horse Shoe       | No. of People | @ \$2.25 |
| <input type="checkbox"/> Main Floor                 | No. of People | @ \$2.00 |
| <input type="checkbox"/> Balcony Circle             | No. of People | @ \$2.00 |
| <input type="checkbox"/> Balcony Horse Shoe         | No. of People | @ \$1.50 |

Enclosed is payment in the amount of \$.....

Please mail tickets to .....

Address .....  
 Number Street Zone State

Telephone Number .....

Date .....

A Direct Benefit for

THE AMERICAN INSTITUTE OF ARCHITECTS, DETROIT CHAPTER

Tickets Also At

**GRINNELL'S**

1515 Woodward Ave.

WO. 2-1124



# frank lloyd wright

## lecture

Frank Lloyd Wright, who will lecture at Detroit's Masonic Temple the evening of May 27, under auspices of The American Institute of Architects, Detroit Chapter, is considered by many (including Mr. Wright) to be the world's greatest architect. When the 84-year-old master was testifying in a court case, he was asked whom he considered to be the greatest living architect, and he replied, "I am." Asked later if he did not think his statement a bit immodest, he replied, "Well, I was under oath, wasn't I?"

And so some have called him the world's greatest living architect, while others just call him names. Whether or not he deserves either is a moot question, but certainly it can be said that he is one of the greatest publicists. On one of his former visits to Detroit, the architects arranged a press luncheon for him at the Detroit Athletic Club. Everything was set, newsmen were present and the cocktails were enjoyed—but no Mr. Wright. Next day one Detroit newspaper, whose editor didn't love Mr. Wright, front-paged the headline, "Two wrongs don't produce a Wright," and the article went on in disparaging terms, concluding that "your guess is as good as ours as to whether he will even show up for the lecture."

The feat was accomplished, the place was mobbed, even by bobby-soxers—the kind who swoon for their favorite crooner—and when they had to be turned away, they were asked why they didn't go down in the lounge and hear him over the public address system, they would say, "We want to see HIM." Had everything gone according to schedule, there wouldn't have been nearly the news value.

Thinking to get some expression about our architecture and city planning problems, a reporter asked Mr. Wright what he thought of Detroit. His answer, "must I think of it?" This is somewhat typical, as he generally gets attention by insulting his fellow architects—but in a way that they like it.

Speaking of architecture and, planning, Mr. Wright says that one of the most significant aspects of our way of life is our system of highways. "Keep your eye on the little gas station," he says, "it's America's symbol of freedom."

Mr. Wright recently submitted sketches for a civic center in Milwaukee. A coun-

cilman asked if he were sure the project could be built for the estimated \$15,000,000. He said, "no architect who is worthy of the name would ever guarantee anything."

When Mr. Wright was here some years ago, he was the guest of his friend, the late Eero Saarinen, F.A.I.A., at Cranbrook. Mr. Saarinen took his guest down to the lake nearby to see a house done by a Wright disciple, Alden B. Dow, A.I.A., of Midland. The house, an ultra modern one, projected out into the lake, with the living room floor below lake level, and water coming up on the glass of the huge windows. Mr. Saarinen related that after going through the house, without saying a word, the two emerged, and Wright turned and studied it seriously, then said, "I think the boy went too far."

Mr. Wright is no stranger to Detroit, where he has many friends. He even has a namesake here—almost a namesake, that is, Frank H. Wright, A.I.A., has a son, Lloyd H. Wright, A.I.A. For a time the two practiced together at 120 Madison Avenue, down the hall from Talmage C. Hughes, executive secretary of the Detroit Chapter, A.I.A. The Wrights had on their door "Frank & Lloyd Wright, Architects," and people coming to the Hughes office, after passing the Wrights, would say, "I see you have some very distinguished neighbors."

Mr. Wright, who, by his very nature, was for most of his life the "lone wolf" of the architectural profession, has softened much in recent years. A few years ago, when the Board of Directors of the Institute had before it a proposal to award him the Gold Medal, its highest honor, some expressed the belief that if the Medal were offered him his first act would be to call in the press and announce that he had refused it. A friend of his took it upon himself to write him, explaining what was being said, and Mr. Wright immediately replied that not only would he accept it but would consider it a mandate to be a good boy, to join his fellow architects and be one of them. He concluded, "I am glad to know that the Institute is finally waking up." This last remark was undoubtedly occasioned by the fact that practically every foreign country had so honored him before he was considered for the highest award from the profession of his own country. He was awarded the Medal in 1949.

A reporter asked him if he had said the reason he had worn only one medal—that of the Royal Institute of British Architects—was because it was the only one that meant anything, he replied, "no it's the only one that has a ribbon on it."

Roger Allen, F.A.I.A., of Grand Rapids, annually vacations in Arizona, where, near Phoenix, Mr. Wright holds forth at his Taliesin West. Allen relates that one one occasion when a doctor went out to visit Taliesin he came back and reported that he was much impressed—except for one thing: some of the doors were only six feet high, while many of the students were well over that tall. Allen's reply: "maybe it's a good thing for an architect to learn to duck."

Anne Baxter, star of 20th Century-Fox studio, is Mr. Wright's granddaughter. "I suppose," says Miss Baxter, "my claim to being identified with architecture is one of inheritance—a claim I am most proud to boast about, with my esteemed and famous grandfather and two uncles in the profession."

Mr. Wright, on a recent visit, chided his granddaughter about the charming house she had bought. "Grandfather criticized a number of things," she said. "He went from room to room, tapping the walls with his cane to see if the house was well built. He had no fault to find on that score, but when I showed him my bedroom, he commented, 'cloying, isn't it?' Miss Baxter also relates that when some distinguished people from abroad visited her on the set they said they were collecting autographs. She signed her name in a book. "No, no," one of them said, "we don't want yours, we would like to have the autograph of your famous grandfather, Frank Lloyd Wright." Apparently, visitors from abroad are more interested in architects than movie stars, Miss Baxter observed.

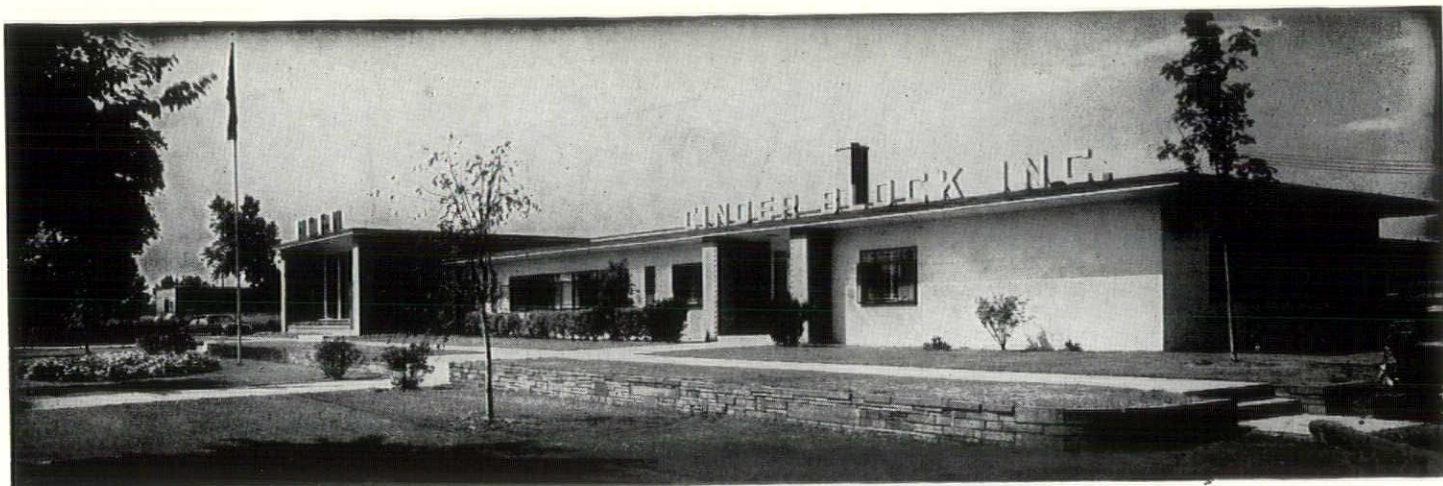
Mr. Wright was aboard the Santa Fe's Super Chief, eastbound, when he was seated in the diner opposite a person whose face was very familiar. The person was Bing Crosby. Neither had ever seen the other. Mr. Wright said, "young man, I suppose a lot of people tell you you look like Bing Crosby." Replied Crosby, "yes, and I suppose a lot of people tell you you look like Frank Lloyd Wright."

Tickets to the Wright lecture are being sold rapidly, even before there is any promotion to speak of. Large blocks of tickets are being bought, and many of the purchasers are the same as those who reserved tables at the Michigan Building Industry banquet in connection with the Michigan Society of Architects Convention in March.

It is evident, as was the case with the banquet, the lecture will be sold out far in advance. The lecture is a direct benefit for The American Institute of Architects, Detroit Chapter, a Michigan non-profit corporation, and profits will go toward its public relations program for the benefit of the whole building industry.

Tickets are available at the Chapter offices, 120 Madison Ave., Detroit 26, Woodward 5-3680, or at Grinnell's, downtown Detroit.





## HORN FUEL & SUPPLY CO.

*An Established Dealer*

*Carrying a Complete Line of All  
Masonry and Plastering Materials*

Distributors of Concrete Masonry Reinforcing

9133 HUBBELL AVE., DETROIT 28

11841 KERCHEVAL AVE., DETROIT 14

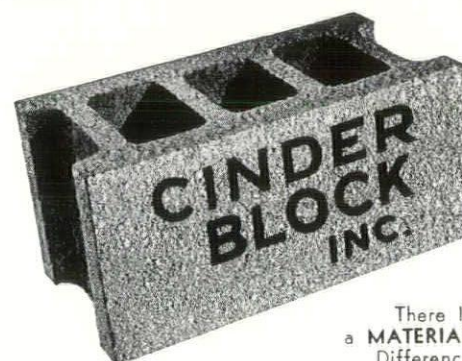
VErmont 8-2200

VALley 2-4450

**Manufacturers of  
Cinder  
Concrete  
Masonry  
Units  
Since 1923**

CONTROLLED  
QUALITY

STEAM CURED  
MODULAR UNITS



There Is  
a MATERIAL  
Difference

9143 HUBBELL AVE. DETROIT 28 VErmont 8-3200



## SPENCE BROTHERS GENERAL CONTRACTORS

417 McCOSKRY STREET SAGINAW, MICHIGAN • TELEPHONE 2-5141



# detroit chapter meeting report

Bruce Goff, Chairman of the School of Architecture at the University of Oklahoma, was the speaker at a meeting of the Detroit Chapter, A.I.A., in Detroit's Rackham Building the evening of April 19.

This was the annual joint meeting of the Chapter with members of its three student branches—at the University of Michigan, University of Detroit and Lawrence Institute of Technology.

President Amedeo Leone presided and following dinner he called upon Dean Wells I. Bennett of the U. M. College of Architecture and Design to present the student awards from his school. The A.I.A. Medal and book, Mount Saint Michel and Chartres by Henry Adams went to Gerald Eugene Harburn; the book to Vivian MacLeod, and the Alpha Rho Chi Medal to Ralph Urban Price.

Joseph Varga, Faculty Moderator of the University of Detroit Student Branch, A.I.A., presented his School's Design Award to student George Head.

Earl W. Pellerin, Head of the College of Architecture, Lawrence Institute of Technology, announced his School's awards to Richard Brehmer and Robert Griffin. The awards were Sigfried Gideon's book, Space, Time and Architecture.

President Leone next presented the Detroit Chapter Awards to Carolyn McKechnie, U. of M.; George Head, U. of D., and John Yanik, L. I. T.

Upon adjourning to the auditorium, President Leone introduced Mr. Goff with some interesting biographical material, and he added that the speaker's architectural career began at a very early age, that he had been influenced by the Orient, and that he was one of the few architects to receive the praise of Frank Lloyd Wright.

Mr. Goff stated that he had always shied away from labels, and that, while he might be on the organic side of the fence he could see over the fence. He said he felt that it was time to bury the hatchet and let Mr. Wright do all of the spanking. Why so much concern about aesthetics? he asked, and he answered by saying that architects are beginning to realize that builders and engineers get magazines too and can produce as good a crib as we can—strip windows and blank-end walls. Modular systems were used by

the Japanese in the Seventh Century, he said, and with just as much monotony then as now. He added that it becomes a language that can fit any type of building—and make them all look alike, whereas architects should think out buildings in their own heads and give expression to them. It should not be necessary to put a cross on a church to show it is a church.

The speaker does not agree with Frank Lloyd Wright that architecture is headed for the gutter, nor that all architectural schools should be bought up and closed, "through the benevolence of F. L. W." It is fashionable today, he said, to be either for or against Wright, Mies, Corbusier, and this is true of both architects and the schools. He can't see why we have to make a cult out of any of them. If architecture is to be alive there will always be something coming next. He does not agree with Ruskin that architecture is frozen music. Contrawise, he said, architecture is a very live art and there is nothing frozen or static about it. He knows of no great example of modern architecture to which we can point and say, "this is it," and he does not know if there ever will be.

The keynote of his belief is that architects must please the people. "We need to win the people," he said, "and I do not think it can be done by soap-box operas on radio and television, but through service."

Prefabrication, he believes to be good, if used with imagination. "A good building is not necessarily architecture, but good architecture is necessarily good building." The part that is over and above the call of duty is the part that will last longest. Architecture of all the arts, he said, is the one with the responsibility of solving a problem. "I think one of the things that is holding us back is the architectural magazine."

In the question-and-answer period the speaker was asked how architects could contribute to the small home. He said the first thing was to get rid of FHA, and remove the stranglehold it has on design and planning. A similar condition prevails with regard to subdivision restrictions, he concluded. Many other interesting questions and answers kept the audience far into the night. It was one of our best programs.

## detroit chapter's next meeting

The Frank Lloyd Wright lecture May 27 will close Detroit Chapter's 1954 season of programs. The lecture's the thing, and effort is being concentrated on it. This is for two reasons. First, the enjoyment of the lecture itself, and, secondly, the Chapter hopes to realize some profit for its program of public relations and other worthwhile activities. Members can be of service to their Chapter by lending cooperation toward disposing of tickets as ear-

ly as possible. It is not an easy matter, and the task will be made lighter if you will place your orders now, rather than waiting until the last few days.

Following notice in the Bulletin last month, more than 500 tickets were sold in one week, this about six weeks before the event. Naturally, as we draw nearer to the date, ticket sales will increase, and there appears to be no doubt at all that the lecture will be a sell-out.



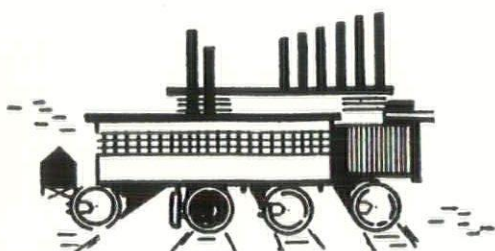
# Chem Brick

This Picture of Dearborn Motor Sales in Birmingham emphasizes the Beauty of CHEM BRICK for Exterior Commercial and Industrial Elevations.

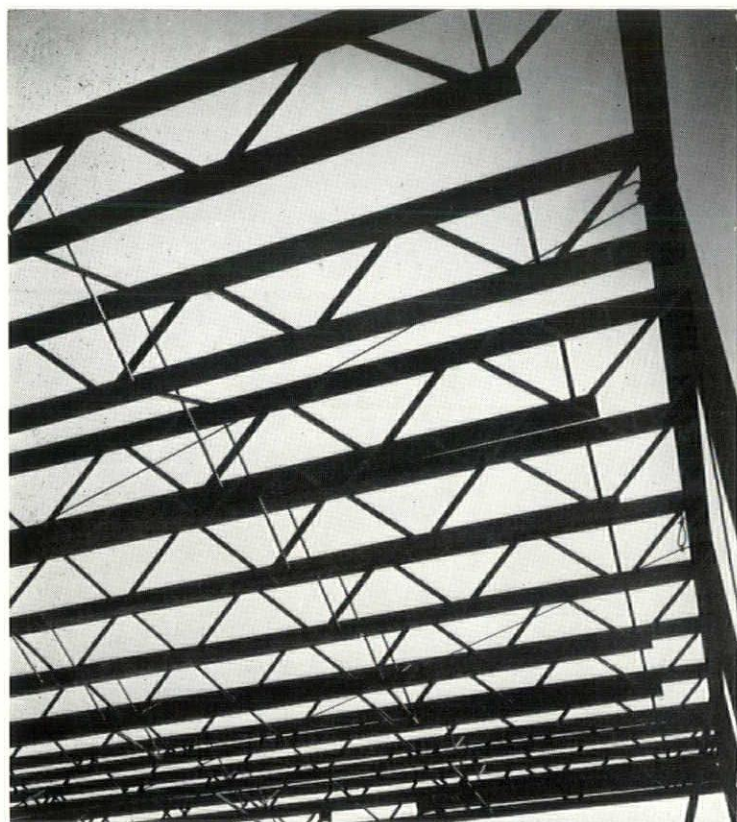
Specify CHEM BRICK wherever you want to combine Permanent Beauty, Durability, Modern Design and Lower Costs.



GIFFELS & VALLET, INC., L. ROSSETTI—ARCHITECTS



**DETROIT BRICK & BLOCK CO.**  
Ft. of St. Jean, Detroit 14, VALley 2-4879



The roof construction of this Grand Haven Senior High School building uses 81-foot T-Chord Long Span Joists.  
Architect: Warren S. Holmes

## BETTER DESIGN

*with* **T-CHORD**  
DESIGN *with greater spans.*  
DESIGN *with fewer columns.*  
DESIGN *with more utility.*

Ton for ton, the single member Tee provides a stiffer, more rigid chord than conventional double-angle chords. This greater strength per ton permits design for larger unimpaired work areas, neater appearance. Faster, easier construction with T-Chord long span joists means speed and economy on the job. Our engineers will welcome the opportunity to help you in every way.

See Sweet's Architectural File No. 2CHA  
Sweet's Industrial File

STRUCTURAL STEEL  
MISCELLANEOUS IRON



T-CHORD LONG SPAN JOISTS  
ORNAMENTAL IRON

**HAVEN-BUSCH**  
COMPANY

501 Front Ave., N.W., Phone 9-4173, Grand Rapids 4, Mich.



# ***western michigan chapter***

The April 26th meeting of the Western Michigan Chapter, A.I.A., was held in the Continental Room of the Pantlind Hotel, Grand Rapids, in conjunction with the Board of Directors of the Michigan Society of Architects. The Board had held its monthly meeting earlier in the afternoon at the Peninsular Club.

The Fourth Annual Honor Awards Program was held following the dinner. Entries were on exhibit and winners were announced by Al Leone, president of the Detroit Chapter. Jury for the Awards consisted of Linn Smith, Sol King, Leone, and James Morison, all of Detroit. Awards were made to the following architects: First Prize, Industrial and Commercial Division to Edwin E. Valentine, Muskegon, Michigan for Drive-In Bank. First Prize, Institutional to Eberle Smith Associates, Inc., Detroit, Michigan, for Covell Elementary School, Walker Township. Mentions: to William Stone, Kalamazoo, for Bank; Harford Field, Traverse City for Immaculate Conception Church, Traverse City; and Randall Wagner, Kalamazoo, Michigan, for Recreational Field House.

Peter Vander Laan as president introduced the visiting Board of Directors and dispensed with the formal part of the meeting to present the round table discussion on "Art and Architecture." The discussion was monitored by Gibson Byrd, director of the Kalamazoo Institute of Arts. Artists participating in the discussion were Hal Jones, Kirk Newman, Professor Jerald Mast, Mark Hansen, and Leonard Jungwirth. The architects and artists presented a lively panel discussion of current liaison among the arts and ways of bringing closer utilization of the fields as one unit. May meeting will be held in Lansing; date to be announced.

JOHN KNAPP, A.I.A., of the Friends of Art, serves on the committee for the Second Outdoor Artists Fair, scheduled to open in Grand Rapids' Fulton Park, June 5. Other committee members are Donald Thompson and Maurice C. LaClaire, co-chairmen, and Frederick See, City Parks Director. Artists will rent space on lines strung from trees and classes will be moved to the park from Grand Rapids Art Gallery.

Knapp was also on the committee for the Ninth Western Michigan Artists Exhibition in the Grand Rapids Art Gallery recently. The judges gave first prize in painting of

\$75 to Robert Hamill of Kalamazoo for his bright-hued abstraction "Painting" and second prize of \$35 to Ralph Scharf of Grand Rapids for his almost as non-objective painting "An Untitled Happy Event."

But the guests at the opening night reception turned their backs on modernism and voted the "popular award" prize of \$25 to Armand J. Merizon's thoroughly traditional "Portrait of a Lady."

The original of this portrait, Yvonne DeGood of 918 Union SE, who does legal secretarial work, was present during the evening. Merizon is a Grand Rapids artist. He also had modern entries in the show.

Prize winners in other categories were: Sculpture, John Knapp of Grand Rapids, architect by profession, for his wood sculpture, "Faces." No second prize was awarded in this group.

Ceramics and crafts, Robert Engstrom of Sparta for pendant and earrings; second, Helen Fisher of Kalamazoo for a ceramic bowl.

Graphic arts, Clay Walker, formerly of Grand Rapids, now of Ohio for a color wood cut, "The Equal Domain," first; Hugh Cranson of Lansing, "Woman with a Dove," lithograph, second. Prizes in each class were \$75, first; \$35, second.

The judges for the show were Richard Davis, Director of the Saginaw Museum of Art, Irving Zupnick, Detroit Institute of Arts, and Dr. Gibson Byrd, Director of the Kalamazoo Institute of Arts. The exhibition is sponsored by the Friends of Art.

Hamill, winner of the first prize in painting, was also winner in the 1953 West Michigan Artists Exhibition.

The show drew the largest response of any similar event in recent years. Entries submitted totaled nearly 350 for which 107 exhibits were selected for the show. The crowd of nearly 300 at the opening night was larger than in several seasons. Ralph W. Wenger, Jr., acted as chairman and announced the prizes.

The Recording Fund Quartet, which has given programs on Sunday afternoons at the Art Gallery, played during the evening. Mr. and Mrs. Mary Mangrum, organizers of the group, Mr. and Mrs. J. Ronald Kingsbury and Robert Tuller,



# NOW...RUSCO HORIZONTAL SLIDE



**RUSCO HORIZONTAL SLIDE WINDOWS** are available in a range of sizes to fit conventional window openings. The standard unit consists of one horizontal slide glass insert with Lumite screen panel and one fixed light. Also available in composite unit with fixed picture window and sliding right and left hand ventilating flankers illustrated at left.

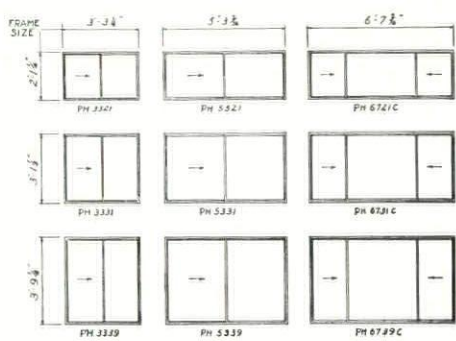
**IMMEDIATE DELIVERY FROM WAREHOUSE STOCK**

STANDARD RUSCO HORIZONTAL-SLIDE TYPES AND SIZES

## FRIENDSHIP WINDOW SALES

Exclusive Distributors for F. C. Russell Co., Cleveland, Ohio

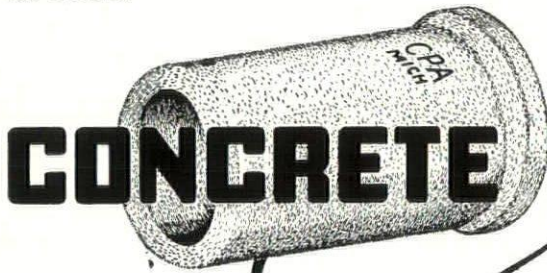
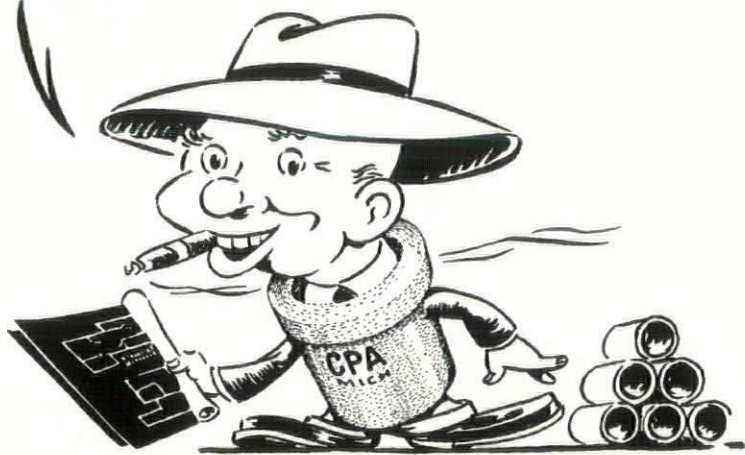
14391 SCHAEFER HIGHWAY • DETROIT 27, MICHIGAN



# WE'VE GOT WHAT IT TAKES TO MEET YOUR SPECIFICATIONS!

Whatever your need may be, there is a **CONCRETE PIPE** made to fit it. Concrete Pipe Association Companies produce a complete range of sizes from 6" to 144" diameters as well as **FIVE** different strength specifications.

Nine member companies stand ready to meet your specifications with **CONCRETE PIPE** delivered **WHEN AND WHERE** the contractor wants it. Write Association for full details.



# CONCRETE PIPE ASSOCIATION OF

*Michigan* INC.  
P.O. BOX 416, ANN ARBOR MICHIGAN





# news

DETROIT CHAPTER, A.I.A. has elected to associate membership Iver George Olsen and Robert Saarinen Swanson.

Olsen, a graduate of Ohio University, is employed by Commonwealth Associates, Inc., of Jackson, Mich. Swanson is a graduate of the Michigan College of Architecture and Design, of 1952, and he received his master's degree from M.I.T. in 1953.

He is the son of J. Robert F. Swanson, A.I.A., of Bloomfield Hills, and Pipsan Saarinen Swanson. He is employed in his father's office.

LOUIS C. KINGSCOTT, A.I.A., a member of the Western Michigan Chapter, A.I.A., has been named president of the Kalamazoo, Mich. Chamber of Commerce.

Long active in civic and professional affairs, Kingscott is a past president of his A.I.A. Chapter. He was also head of the International Bridge Authority, and chairman of the State of Michigan Board of Registration for Architects, Professional Engineers and Land Surveyors.

TODAY'S WOMAN, 67 W. 44th St., New York City, is interested in seeing photographs, renderings and/or elevations of architect-designed houses costing under \$20,000—preferably under \$17,000, including custom-designed as well as development houses, with the view to possible editorial treatment.

WHEELER & BECKER, ARCHITECTS. is the name of a new firm, successor to the late Henry F. Stanton, F.A.I.A., architect, and continuing the practice of Stanton & Hillier, at 1243 Free Press building. The telephone number is WOODWARD 2-2695.

Both Mr. Stanton and Mr. Hillier died last year.

Vernon L. Wheeler, senior member of the new firm, had been with the Stanton office for several years. Byron H. Becker, who resides at 1455 Penniman Ave., Plymouth, Mich., had been employed by Giffels & Vallet, Inc., L Rossetti, Associated Engineers and Architects.

DONALDSON & MEIER, ARCHITECTS, of Detroit have reached their 75th year, having been founded in 1879. There is now in that office the third generation of the Meier family, Edwin Meier, Jr., son of the late Edwin Meier, who was a member of the firm of Talbot & Meier, general contractors.

FRANK H. WRIGHT, A.I.A., was struck by a car on March 9, and sustained several broken bones. Reports from Mt. Carmel Mercy Hospital, 6071 W. Outer Drive, Detroit, state that his condition is "good."

**Ideal location for architect's office, New Center district. Newly remodeled contemporary design by James Conn, A.I.A. Two story building, first and second floors available, 2,000 square feet each. Owner, Dr. Geo. L. Waldbott, TR. 2-6600, occupies basement, 2930 W. Grand Blvd.**

TWENTY-ONE AUSTRALIAN ARCHITECTS, members of the Australian Building Productivity Team, will visit Detroit May 15-17. The visiting architects are making a tour of the United States under the sponsorship of the A.I.A. Chester A. Sirrine, A.I.A., has been named chairman of a Detroit Chapter committee to entertain the guests and show them points of interest in and about Detroit.

LaVERN J. NELSEN, A.I.A., formerly with the office of Harley, Ellington & Day, Inc., Architects and Engineers, announces the opening of his own office at 16180 Woodward Ave., Highland Park 3, Mich. Nelsen, who was formerly secretary of the Saginaw Valley Chapter of The American Institute of Architects, has transferred his membership to the Detroit Chapter.

CHESTER A. SIRRINE, A.I.A., has transferred his membership in The American Institute of Architects from the Western Michigan Chapter to the Detroit Chapter. Sirrine, a graduate of the University of Michigan, is now executive secretary of the Concrete Products Association, of Detroit.

HARFORD FIELD, A.I.A., has been elected Vice-President of the Traverse City Rotary Club. Field, a member of the Western Michigan Chapter, A.I.A., is a graduate of the University of Illinois. He formerly practiced in Chicago, where he was Vice-President of the Chicago Chapter, A.I.A.

FREDERICK J. WINTER has been made a member emeritus of The American Institute of Architects and its Detroit Chapter. Winter, a native Detroiter, has practiced here since 1892. He became a member of the A.I.A. in 1916. His offices are at 2410 Book Building.

PAUL R. MARSHALL was paid a tribute by his colleagues on April 1, for his having been with Aluminum Company of America 25 years. At a testimonial event in the company's offices, 610 New Center Building, a portfolio of congratulatory messages was presented to him. Marshall, who has been active in the Producers' Council since its inception, has for some years been chairman of the Michigan Building Industry Banquet, a feature of the Michigan Society of Architects' annual convention.

A.I.A. CONVENTION—Christian A. Herter, Governor of Massachusetts and Edward A. Weeks, Editor of the Atlantic Monthly, will be headline speakers at the 86th Convention of the American Institute of Architects. The national professional organization is holding its annual event this year in Boston, from June 15-19.

Week's opening talk on Tuesday, June 15, will be keyed to the broad convention theme "Forces that Shape Architecture." His impressions of the contemporary American scene and its architecture are gleaned during the course of more than 25,000 miles of travel about the country each year. Governor Herter, who is associated closely with the profession as chairman of the Visiting Committee for the Har-

vard Graduate School of Design, is scheduled to address the convention on Friday, June 18.

John B. Hynes, Mayor of Boston, will greet the architects and their guests at the opening luncheon, and James Lawrence, Jr., will issue a welcome on behalf of the Massachusetts Society of Architects, of which he is president.

Throughout the convention week, daily seminars will present a variety of subjects appropriate to the overall theme. Observations on "Government's Impact on Architecture" will be presented at a luncheon meeting, June 16, by the distinguished former president of the Royal Institute of British Architects, Michael Waterhouse, FRIBA of London, and Miles Colean, FAIA of Washington D.C. Douglas W. Orr, FAIA of New Haven, chairman of the AIA Committee on Architect and Government, will preside.

Varying viewpoints will emerge when five eminent architects discuss the "Changing Philosophy of Architecture" with John F. Harbeson, FAIA of Philadelphia—as moderator. Panel members include Ralph Walker, FAIA of New York; Eero Saarinen, FAIA of Bloomfield Hills, Michigan; Jose Luis Sert, Dean of Harvard's Graduate School of Design; Paul Rudolph, Sarasota, Florida; and Robert W. Kennedy, Boston.

Design trends for two important building types—hospitals and schools—will be the subject of another seminar. Marshall Shaffer, Chief of the Technical Services Branch of the U.S. Department of Health, Education and Welfare's Division of Hospital Facilities, will moderate the session on hospitals. Participants include architects Vincent G. Kling of Philadelphia, and Aaron N. Kiff, New York; and Dr. Albert W. Snoko, director of Grace-New Haven Community Hospital.

John C. McLeod of Washington, D. C., chairman of the AIA Committee on School Buildings, will be moderator for the school panel which includes architects John Stanley Sharp of New York, Samuel E. Homsey, Wilmington; and the president of the National Council on Schoolhouse Construction, Charles S. Gibson of San Francisco.

There will be a panel on Architectural Education headed by William W. Wurster, FAIA of San Francisco, who is Dean of the University of California's College of Architecture, and Carl Feiss of Washington, D.C., chairman of the AIA's Committee on Education.

At a technical seminar, experts will speak on new developments in building methods, materials, lighting, air conditioning and ventilation. Architect Lessing W. Williams of New York will be moderator of a panel that includes Paul Weidlinger of New York, structural engineering consultant; Charles Leopold, Philadelphia, heating and ventilating engineer; C. L. Crouch, New York, Technical Director of the Illuminating Engineering Society; architects Ben John Small of New York, and Leonard Haeger of Washington, D.C. Haeger is director of the National Association of Homebuilders' Research Institute.

Approximately 2,000 architects and guests from all sections of the country are expected to attend the Boston convention. Headquarters will be at the Hotel Statler.



# ALLIED STEEL AND CONVEYORS, INC.



17333 HEALY AVENUE • TELEPHONE TWINBROOK 2-3040 • DETROIT 12, MICHIGAN

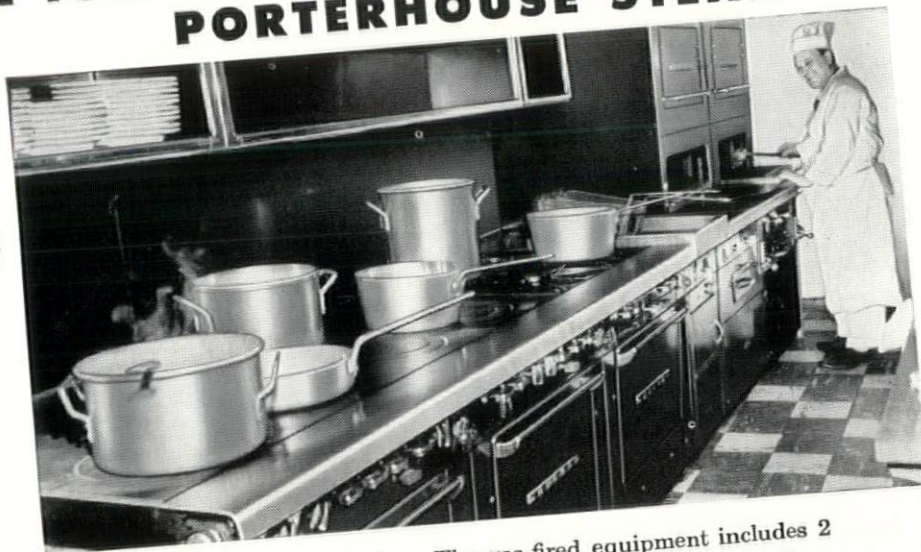
**Designers  
Fabricators  
Erectors**

**MISCELLANEOUS IRON WORK**  
DOOR FRAMES • SILLS, LINTELS •  
CURB ANGLES, RACKS • LIGHT TRUSSES •  
STAIRS, LADDERS, FIRE ESCAPES •  
CRANE RUNWAYS •

## LARCO'S INN features PORTERHOUSE STEAK



**fine meals  
prepared in  
ALL-GAS  
kitchen**



Larco's Inn, at 7525 West McNichols in Detroit, serves savory, wholesome food. This cheerful eating place, with room for 250 diners, has a well-founded reputation for fine porterhouse steaks. Food for Larco's Inn patrons is prepared in an all-

gas kitchen. The gas-fired equipment includes 2 hot top ranges, open top range, fryer, 2 broilers, 2 coffee urns, dishwashing machine, 2 water heaters and a steam table. Gas equipment was chosen because it is fast, efficient and economical.

**MICHIGAN CONSOLIDATED GAS COMPANY**

*Serving 765,000 customers in Michigan*

may '54 monthly bulletin





## bowlers' oscar

With the current bowling season drawing toward the close, the Detroit Architectural Bowling League is planning a gala banquet to mark the conclusion of its season, Friday, May 7, and to commemorate its 32nd anniversary. All interested architects and engineers are cordially invited to attend, Jim Simons, Chairman of the Banquet Committee announced.

Activity has been heavy as bustling architects and engineers vie for the honor of winning the perpetual "Architect's Trophy".

This 32"-high engraved trophy is annually awarded to the team who winds up the season in first place. Giffels & Vallet, the champions of last year, are hoping to repeat the feat again this year, but H. E. Beyster, Inc., Architects & Engineers have maintained top spot throughout the latter part of the current season, with Giffels & Vallet a close second.

The idea of presenting an annual trophy was conceived last year by league officials, Chet Jaros, and J. A. Bouffard, general manager of Chem-Brick, who were instrumental in obtaining this trophy with the support of Detroit Brick and Block Co., manufacturers of Chem-Brick.

League officers decided last year that the trophy would be permanently kept by the first three-time winner, and yearly winners would be awarded plaques.

The league headed by President, Bob Calder, is composed of 16 teams, all of whom bowl on the 7th floor of the Detroit Recreation Building each Friday evening at 6 p.m.

Aside from Beyster and Giffels & Vallet, the other 14 teams are: McGrath & Dohmen, Albert Kahn Associates, Ralph R. Calder, Robert J. Davis, Smith, Hinchman & Grylls, Jahr-Anderson Associates, Herman & Simmons, Snyder & McLean, Norman Krecke, Hyde & Bobbio, Diehl & Diehl, George Wagschal Associates,

Eberle M. Smith Associates, and Harley, Ellington & Day.

According to Jim Simons, the banquet this year has indications of being an overwhelming success. Good food and entertainment M.C'd by Rex Billingsly (not of Stork Club fame), with Dolores & Verdi, comedy team, Maureen Bailey on vocals and Chairmaine, dancer, the affair promises to be quite eventful and relaxing. It will be held at American Turners, 8735 East Jefferson on Friday, May 7. Dinner is scheduled for 6:30 p.m. with pre-dinner cocktails optional. Door prizes and bowling prizes will be awarded.

For more information, call Jim Simons at Herman & Simons, Architects, WO 2-8788.

More than 500 architects and members of the building industry attended the "Caravan of Building Products" presented by the Michigan Chapter of the Producers' Council, Inc. at the Veterans Memorial, Detroit, on March 30.

Among the architects attending (and at the buffet table) were H. Sanborn Brown, Robert Hastings, Gustav Muth, William E. Kapp, Vernon Wheeler, Alex Linn Trout, Malcolm Stinton, John Thornton, Maurice Hammond, Edward Rosella, Charles McGrew, Thurston Jahr, Joseph Leinweber, Leo Bauer, Frank Barcus, Werner Anderson, William Fernald, Leo Perry, Albert Schoerger, Ernest Dellar, Walter Wyeth, Carl Freiwald and Frank Miles.

Morris Jackson, Carl Pollmar, James Morison, Earl Meyer, Louis Blume, Homer Fowler, Fred Bennett, Harvey Hoffmaster, Robert Zander, Donald Anderson, Alex Kohner, James B. Hughes, Sol King, Merle Weaver, Paul Tilds, Alfred Emmerling, Robert Yokom and Carlisle Wilson.

A. Arnold Agree, Eberle Smith, Leo Heenan, E. J. Knight, Stanley Fleischaker, Paul Sewell, W. H. Lundy, Charles Vogel, Louis Chesnow, Gordon Sheill, Otto Kavielf, George Schulz, Ernest Greenberg, Byron Becker, Arthur O. A. Schmidt, Urban Woodhouse, William Lindhout, and Edward Newman.

Peterson Window Company, of Ferndale, Mich., is displaying an attractive three-panel picture window with ventilating section that rolls aside on stainless steel rollers, as one of the many models of horizontal sliding aluminum windows recently developed by the company.

The display includes a two-panel 4'x4' unit and a similar 2'x2' window and photographs of many other installations of varying sizes. The built-in window and cut-away samples show how modern advanced engineering has produced a prime window with built-in, self-storing storm sash and screens.

The windows require no putty, no sash balances, no operating cranks or projecting hinges.

"Our Company offers 50 standard sizes and it is able to offer prompt service on special sizes at only slight additional cost," said Gerald D. Peterson, Company president, "and our windows are sold from coast to coast and specified by architects for high grade residences, commercial and monumental structures."

## gothard arntzen

GOTHARD ARNTZEN, A.I.A., 82, died in his home City of Escanaba, Michigan on March 14.

Born in Norway, he received his education there, and he came to this country in 1889, settling immediately in Escanaba, where he has lived since.

For a time Mr. Arntzen was a contractor, and, with his brothers, owner of a lumber company. In 1917 he withdrew from these activities and devoted himself solely to the practice of architecture. The practice will be continued by his sons, Arne Arntzen, A.I.A., and Walter.

Surviving are his widow, Mrs. Marie Larsen Arntzen; four sons, Arne, Edgar and Walter, all of Escanaba, and Kenneth of Seattle, Wash.; six daughters, Mrs. Abe Houle and Mrs. R. D. Carlson, both of Escanaba; Mrs. J. L. Booth of Flint, Mrs. H. H. Jelly of Fon du Lac, Wis.; Mrs. Robert Stiffler of Aroya Grande, Calif. and Mrs. O. T. Thorsen of Long Beach, Calif. Also surviving are two brothers, A. M. and Richard, 27 grandchildren and one great grandchild.

## alois lang

ALOIS LANG, 82, internationally distinguished wood carver, for nearly fifty years with the American Seating Company, of Grand Rapids, died in Ann Arbor, Mich., March 10.

Born in Bavaria, scene of the famous Passion Play in which he and his cousin appeared, he came to the United States in 1890. He had retired in 1952, after 65 years as a carver.

Mr. Lang's unique skill brought him worldwide acclaim. One of his most famous carvings is an interpretation of Leonardo da Vinci's masterpiece, "The Last Supper." Examples of his work are to be found in churches throughout the United States.

Mr. Lang is survived by his wife and two daughters.

## kenneth bell

C. KENNETH BELL, architect, formerly of Detroit and Birmingham, Mich., died at his home in Tucson, Arizona on February 22 at the age of 66.

Born in Crawfordsville, Ind., Mr. Bell received his professional education at Cornell University, where he was an architectural graduate of the class of 1909. He was engaged in architects' offices in Pittsburgh, Pa. and Cincinnati, Ohio before coming to Detroit. He became registered as an architect in Michigan, by examination, in 1917, and he entered the U. S. Army Air Service the same year, serving through 1919, as a lieutenant.

Mr. Bell had been in individual practice in Detroit for three years, and he then became associated with the firm of Harley and Ellington, Architects and Engineers, of Detroit, later becoming a partner. He had been a member of The American Institute of Architects, its Detroit Chapter, the Michigan Society of Architects and The Engineering Society of Detroit. Surviving is his wife Catherine, of 1415 N. Forgeus St., Tucson, Ariz.





Asphalt Surfaced Parking Area

**BITUMINOUS AGGREGATE** is the ideal asphalt paving material for parking areas, access roads and driveways. Its economy and durability makes it the preferred type of paved surface. Architects and engineers now specify asphalt for modern paving needs.

For Quality Work Use Only the Contract Method  
Through Experienced, Pre-Qualified Contractors

For Information and Specification Recommendations Write:

## Michigan Asphalt Paving Association Incorporated

701 PRUDEN BUILDING  
LANSING 16, MICHIGAN

1000 W. GRAND BLVD.  
DETROIT 8, MICHIGAN

# FIRESIDE PRINTING & PUBLISHING COMPANY

M A G A Z I N E  
A N D  
P R O G R A M  
S P E C I A L I S T S

2282 EAST FOREST AT CHENE  
DETROIT 7, MICHIGAN  
T E M P L E 2 - 4 9 0 0

## "So That's How You Do It!"

In the past 30 years,  
how many times have you  
said this to a

**HARTY** representative  
when he told you the  
**HARTY** way of doing it?

When you want to know  
the latest and best  
way of doing a door job,  
call TOWNSend 8-6990,  
and we will get a man out  
to show you the **HARTY** way.

WHERE DEPENDABILITY IS PARAMOUNT,  
SPECIFY **HARTY** DOORS

## R. V. HARTY COMPANY INCORPORATED

1433 Sloman Avenue, Detroit 11, Michigan  
TOWNSend 8-6990

*New — Practical — Time-Saving . . .*



### STREAMLINED SPECIFICATIONS STANDARDS

**Volume I** by BEN JOHN SMALL, A. I. A.  
(Architectural)

Here is the most valuable time-saver ever published for the architectural specifying team! Uniquely designed in three handy, easy-to-detach pads, this volume contains all the specifications necessary for the contract, site work, carpentry and other structural work, masonry, weather protection, metal work and finishing of a building. All are grouped into 63 alphabetically arranged sections, are numbered for quick reference or separate filing, and are printed on only one side of a page in double-spaced elite typewriter type. Nowhere else will you find these amazing streamlined specifications in such easy-to-use form!

1952, 1000 SHEETS — 3 8½x11" PADS, \$20.00  
(Plus 50c Postage)

Order your copy directly from

**A.I.A. MONTHLY BULLETIN**  
120 Madison Avenue Detroit 26, Michigan



# changes in insurance clauses

## a.i.a. general conditions

By M. Robert Olp, Vice-President, Marsh & McLennan, Insurance Counsellors

A Talk Before the Detroit Chapter, A.I.A.

There has been unfolding in this country a decided change in responsibilities and liability for injury to persons and for the damage to property caused by business operations.

We have seen a tremendous increase in court verdicts from actions caused by negligence. Our present economy with its deflated dollar and low interest rates, possibly starting about 1932, has been one of the factors helping to support this condition, along with a seeming desire for the other fellow's cash in copious quantities if one feels he has been injured.

That which is old in other parts of the world now appears to be recurring here. Many years ago "The Code Napoleon" established in France the requirement that a person shall be responsible for injury to others, or damage to property of others, through his negligence. Consequently, a liability insurance policy was issued with each fire policy, all growing out of the Common Law that has come up through the ages and a very simple matter to understand. You own a bicycle. Common Law protects you and your bicycle and no one has a right to kick you or it around. If he does, Common Law protects you and permits you to collect damages. You may insure that bicycle and if it is damaged, the insurance company will pay your loss. The fact that the bicycle is insured, does not excuse the offending party from his Common Law responsibility. The insurance company has a right to step into your shoes, as the insured, and can subrogate to itself all your Common Law rights against the person who injured you.

Thus, all of us are faced with a tremendous responsibility for injury to members of the public and damage to their property. This is a responsibility that in many instances has caused business failure or bankruptcy because of the financial inability to withstand these shock losses.

The bodily injury verdicts are today running very high, particularly because of the economy in which we live. One of our trucks may injure a little girl and maim her for life. The court will ask us a fair question -- "In this economy, how much

money must we consider to give this child a secured living for the rest of her life, as she may never be able to earn her own living as long as she lives? Is \$200,000 invested at 2½% enough? What about the medical expense involved, and what about the pain and suffering?

At the same time that these verdicts have spiraled, our physical values have grown constantly in size. We are taking into our buildings new hazards in materials and equipment not known a few years ago. Our present-day operations have developed exposures that require all business people to review their present conditions and attempt to safeguard their financial positions.

The Construction business, because of its particular type of operation, and having to do with large values, seems to be exposed to this condition of injury to people and damage to property possibly more than other classes of business. Recognizing this fact and seeing losses of great size being suffered by members of their own business, the Associated General Contractors in Michigan, too, determined to have a new look at this unmeasurable exposure of hazards they face day by day in their normal business activities. Upon further exploring the problem it was recognized that the owner had a comparable exposure, only slightly less in magnitude, as did the architect.

At this point it was determined to approach The American Institute of Architects, who were most understanding and willing to carry on the study as a joint venture. The various Michigan A.I.A.

Chapters, through their respective Specifications Committees, arranged study groups with the A.G.C. organizations in Michigan and began their work.

With new ideas in mind, the members of the A.I.A. and A.G.C. Study Groups, after several meetings, met for the purpose of setting into words their ideas for rewriting the Insurance Articles of the Standard Specifications in the light of today's requirements. William Stanley Parker, F.A.I.A. Chairman of the National A.I.A. Committee on Contract Documents, was in attendance at the last joint study group meeting. He had edited the proposed Insurance Articles changes and had an acceptable suggestion to rearrange them. His help was very much appreciated.

A brief review of the changes included are:

- a. adding Extended Coverage to the Fire insurance;
- b. setting up hold-harmless arrangements to help eliminate subrogation loss possibilities;
- c. require of the Contractor that his General Liability and Auto Liability insurance be written under Comprehensive Form; and
- d. establish minimum limits of liability more in line with today's requirement.

In this Study, many meetings have been held in an effort to fulfill these requirements and to reach an equitable position of fairness to all interests.

We think we have succeeded. In this accomplishment, we owe a debt of gratitude to Mr. Parker, to John K. Gross, Chairman of the Detroit A.I.A. Committee, his committeemen, and the presidents of the two out-State A.I.A. chapters and their committeemen.

The assistance and counsel given to this problem by way of the Joint National Specifications Committee of the A.I.A. and A.G.C. national bodies which met on the morning of September 12th, 1953 at the Edgewater Beach Hotel in Chicago should be recognized and appreciated.

We want to make it clear that our work on insurance articles and the changes suggested should not be construed as a criticism of insurance companies or their practices. Their operations are fair and entirely reasonable.

I should like to conclude that nothing is ever static, particularly in the insurance field. We, therefore, should be constantly alert to changes in business which touch us directly and indirectly, and thereby help to insure the future.

**EDITOR'S NOTE:** The documents referred to herein were published in our last issue. They have been duplicated in specification form and are available from the Bulletin office at prices indicated below. Add 5% for postage and handling. Documents No. 1 and No. 2 are intended to be inserted in specifications. Document No. 3 is only an explanation.

Number of copies	1	10	25	50	100
Doc. No. 1 per copy	.10	.085	.08	.07	.065
Doc. No. 2 per copy	.12	.10	.09	.08	.075
Doc. No. 3 per copy	.25	.20	.19	.18	.17

Add 5% for postage and handling





## IN DETROIT AND MICHIGAN

**TITLE INSURANCE** on  
both Owner's and  
Mortgagee's Policies  
anywhere in Michigan.

**ABSTRACTS** prepared  
and extended on lands  
in Wayne, Oakland and  
Macomb Counties.

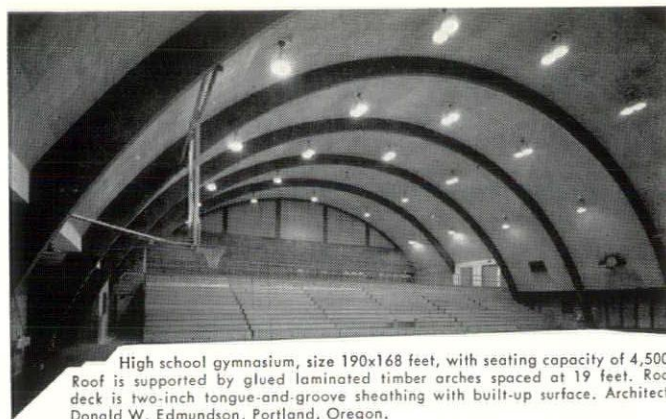
**TAX** reports prepared  
on condition of taxes  
to real property located  
in metropolitan Detroit.

**ESCROW** Agent in all  
matters involving real  
estate transactions.

THE OLDEST TITLE  
INSURANCE COMPANY  
IN MICHIGAN

### ABSTRACT AND TITLE GUARANTY COMPANY

735 GRISWOLD • OPPOSITE CITY HALL • WO 3-5810  
5 BRANCHES TO SERVE YOU



High school gymnasium, size 190x168 feet, with seating capacity of 4,500. Roof is supported by glued laminated timber arches spaced at 19 feet. Roof deck is two-inch tongue-and-groove sheathing with built-up surface. Architect: Donald W. Edmundson, Portland, Oregon.

### Use Glued Laminated Timber Arches for better gymnasiums at budget prices

Any school district can have this spacious gymnasium with its unobstructed play area and handsome appearance without undue financial strain. For the timber arches carry the entire roof load, eliminating costly load bearing walls and bringing total cost down within reasonable limits.

To see how you can make similar economies in construction of classrooms, auditoriums and vocational shop buildings, ask for the booklet, "Modern Functional Schools". Get it free from your nearest Timber Structures office, or write us.

### TIMBER STRUCTURES, INC.

P. O. BOX 3782-R, PORTLAND 8, OREGON

Offices in Ramsey, N. J.; Chicago; Detroit; Lenexa, Kansas; St. Louis; Minneapolis; Columbus; Omaha; Dallas; New Orleans; Birmingham; Charlotte; Memphis; West Hartford; Seattle; Spokane; Eugene; Richmond, California

The New Fourth Edition of  
The ONE-BOOK REFERENCE SHELF on BUILDING

## ARCHITECTURAL GRAPHIC STANDARDS

By CHARLES G. RAMSEY, A.I.A.  
and HAROLD R. SLEEPER, F.A.I.A.

- Increased by 80%
- 386 entirely new pages
- Expanded index of 11,560 entries



Although completely revised, the purpose remains the same—to supply architects and draftsmen with the standards, facts, and data needed in their daily work for every type and phase of building. The material is arranged in the natural sequence of building, from the foundation up, including materials, fixtures, fittings, devices, equipment, appliances, accessories, utensils, furnishings, apparatus, machinery, and supplies. The data have been drawn from thousands of sources, checked against standards where they exist and with architects' and manufacturers' associations where they don't, and presented in the most usable form.

614 pages    9 1/4 by 11 1/2    \$12.50

### NATIONAL ARCHITECT

120 Madison Avenue,

Detroit 26, Michigan

## Glass Block Installation

### WILLIAM BORTOLOTTI & SONS

21070 Coolidge Highway  
Oak Park 37, Michigan  
JORDAN 4-5913



# changes, insurance requirements

By H. Thompson Stock, C.P.C.U., Insurance Counsellor,  
of Arthur J. Stock Company.

A Talk Before the Detroit Chapter, A.I.A.

As a consequence, of the meetings reported by Mr. Olp, your committee now has for your approval:

- (1) new articles 45 and 46 which amend articles 27 and 29 of the General Conditions. As your insurance counsellor, I have approved these articles.
- (2) changes in the Circular made necessary by the addition of the new articles. The new Circular will discuss ways to handle fire and extended coverage insurance when additions and alterations are involved and when the owner, usually a political unit, has a self-insurance plan.
- (3) a new set of model insurance provisions for use of architects who prepare their own specifications. Essentially, it is a combination of the requirements of the old and new articles pertaining to insurance, reworded, to some extent, and rearranged. As your insurance counsellor, I approved these provisions.

The important additions appearing in new articles 45 and 46 will now be discussed:

The owner is now required to have the extended coverage endorsement attached to his builder's risk fire insurance. As a result, the contractor's and the owner's investment are protected against most of the major perils that could cause physical damage to the new structure. Extended coverage perils include windstorm, hail, explosion (except steam boiler explosion), riot, including riot attending a strike, falling aircraft, damage by vehicles, and smoke—damage caused by the faulty operation of a heating or cooking unit in the premises connected to a chimney by a vent pipe. This new requirement is in line with present day insurance—buying practice. Mortgagees demand it. Recent tornadoes in Michigan, and places elsewhere though immune, have demonstrated the necessity of this new requirement.

Comprehensive bodily injury and property damage liability insurance is now required. This is an "all-risk" type of liability policy. It has its exceptions, however, and can be endorsed to exclude coverages not required, such as "completed operations." The advantages of the comprehensive form of policy are:

- (1) automatic coverage on all operations, locations and motor vehicles during term of the policy;
- (2) elimination of disputes as to which insurer is liable when different insurance companies write component

coverages. For example, automobile liability policies cover "unloading" of insured motor vehicles. But when does "unloading" end? Court decisions differ widely.

Article 27 requires the contractor to "maintain such insurance as will protect him from claims . . . for damages because of bodily injury, including death, which may arise from and during operations under this Contract . . ."

No mention is made there of claims arising from automobiles. Your committee thought that such claims should be mentioned.

New article 45 requires property damage liability insurance. This kind of liability insurance protects the insured against his legal liability for damage caused by accident to property of others except property in his care, custody and control.

A building under construction is under the general contractor's "care, custody and control". An addition to a building would be under the general contractor's "care, custody and control" but not the occupied building. What is "care, custody and control" is illustrated by the case of Cohen VS. Keystone Mutual Casualty Co., 30 Atl. (2nd) 203. A subcontractor was hired by a general contractor to demolish the top five stories of an eight-story building. The debris was moved across the roof of the one-story section of the building. The roof collapsed. Court held that the one-story section was not in subcontractor's "care, custody and control" because he was not hired to work on that section.

How, then, can the general contractor and subcontractors be protected against their legal liability for damage by fire etc. to the building or addition under construction? This can be done either:

- (1) by getting the "care, custody and control" exclusion eliminated in the property damage liability policy, which may be difficult to do.
- (2) by buying a separate fire etc. legal liability policy.
- (3) by the owner and contractor (and his subcontractors) each agreeing to not hold the others liable for acts resulting in a loss caused by fire, lightning and extended coverage perils. Further, the owner and contractor must have a subrogation waiver clause on the fire and extended coverage insurance on the owner's property and on the contractor's equipment, scaffolding, temporary buildings, etc. Fire insurance companies make no charge for this waiver of subrogation. New article 46 takes care of all this.

Reference has been made to subrogations. What is it? When one has been injured or his property has been damaged by the negligent acts of a third party, he can either sue that party, or collect from his insurance company if he has the right kind of insurance. If he elects to collect under his fire and extended coverage insurance, he has to assign his rights to collect from the party at fault to his fire insurance companies. Insurance companies call this their right of subrogation. When the insured agrees not to hold another party responsible for a loss that might occur, he must have a waiver of subrogation endorsement on his policies to prevent voiding his own insurance.

Mr. William Stanley Parker told about a case in Spokane that demonstrates the need of this new agreement in article 46. A parish house auditorium was being erected next to the church. Beams were cut out by a blow torch, to put in a pipe. Fire loss occurred. Insurance Company paid the loss and then subrogated against the contractor for \$40,000. The Campbell Construction Company case illustrates the need for both property damage, liability insurance and the subrogation waiver agreement. According to the January 31, 1952 issue of the National Underwriter, Campbell Construction workmen were, settled for \$175,000 the action growing out of the fire March 10, 1950 that caused \$600,000 loss at Detroit to the warehouse building owned by F. L. Brownley and the contents of Motor Products Co. . . . Campbell Construction workmen were, with acetylene torches, removing a ventilating stack over an old spray booth. Accidentally they set fire to the stack . . ."

New Article 45 now requires minimum bodily injury liability limits of \$100,000 per person, \$300,000 per accident and minimum property damage limits of \$50,000 per accident and \$50,000 per policy year. The Campbell Construction Company case shows the need for high property damage liability limits. The August 27, 1953 issue of the National Underwriter tells about a \$360,000 settlement to the driver of a pickup truck who became permanently paralyzed as the result of his truck being hit by a tanker truck. For further proof of the need for high bodily injury liability limits, see article in This Week Magazine published by the Detroit News October 11, 1953 entitled "What is Your Life Worth?"

Fortunately, high limits do not cost much. \$25,000/50,000 bodily injury limits for contractors liability insurance costs but 36% more than \$5,000/10,000 limits. \$100,000/300,000 limits cost but 54% more than the \$5,000/10,000 limits. \$5,000 contractors property damage liability costs 25% more than \$1,000. \$50,000 limits cost but 51% more than \$1,000. It is far better to have more liability insurance than one needs rather than not to have enough.

Your committee has made an important step toward assuring the financial stability of the contractors you do business with. It should be continued in order to keep abreast of current developments. Furthermore, your members should be informed more fully about insurance than can be told in the Circular. They and the contractors should get this information from their insurance agents.





**23 SIZES • 57 MODELS**

Stocked in our warehouse and serviced by  
our factory-trained personnel



*Automatic* **WATER HEATERS**  
**GAS • ELECTRIC • OIL • L.P. GAS**

**for DOMESTIC  
COMMERCIAL • INDUSTRIAL**

**WALTER VALLETT COMPANY**

12151 COYLE AVE. • DETROIT 27, MICH.  
BRoadway 3-9500

**KURTZ Brick Company**

Manufacturers & Distributors

**LARGEST STOCK OF FACE BRICK IN MICHIGAN**

DIRECT FROM THE KILN TO THE JOB

BEAUTIFUL BRICK OF QUALITY, ENDURANCE & ECONOMY

WIRE CUTS - MATS - RUGS - BUFFS - GREYS - IRON SPOTS - SMOOTHS - REDS - OAK BARKS

BROKEN TILE - NORMAN - ROMAN - IN STRAIGHT SHADES - OR IN MULTI-COLORS

**J. L. HUDSON NORTHLAND  
WORLD'S LARGEST SHOPPING CENTER**

We furnished all face brick used on  
this project and after 2½ years our  
12 inch Norman size and 8 inch brick  
has not varied as to size or color.

This brick was exclusively made for  
this project to customer's specifica-  
tion.

14183 Wyoming Ave., Detroit 38, Michigan • WEbster 3-2384

**SMITH-MAYNARD  
ELECTRIC**

electrical contractors and engineers

1108 NORTH WATER STREET  
BAY CITY, MICHIGAN  
BAY CITY 3-6044

Member  
Michigan Society  
of Professional Engineers

**BEFORE SELECTING**

**BRICK or TILE**

**VISIT OUR SHOWROOMS**

**Our Complete Lines Include:**

- Face Brick in Every Color, Size and Texture • Terra Cotta • Paving Brick • Structural Glazed and Unglazed Facing Tile • Floor Brick and Quarry Tile • Acid Brick

Also distributors for

Anti-Hydro Waterproofing and Cardinal Masonry Saw Blades



1800 EIGHTEENTH STREET at  
WEST VERNOR HIGHWAY  
TELEPHONE Tashmo 5-0725



## CASE STUDY NO. 17

The Kelsey-Hayes installation makes inspection more accurate. A similar lighting fixture detects minute scratches on stainless steel jet engine rotor blades for another manufacturer.

### Planned Lighting Brings Out Imperfections

Inspectors at Kelsey-Hayes Wheel Co., Detroit, found it difficult to detect every fault in the constant stream of chrome plated wheels and spokes flowing through the plant. The glitter from multi-curved surfaces obscured imperfections; caused critical eyes to falter.

The solution was an Edison-engineered fluorescent fixture which actually uses the reflective value of chrome to uncover hard-to-see blemishes. How? By the emission of uniform, low brightness light. Under it plating defects seem to jump right out as darker, entirely different colored areas. Now inspection safely moves at a faster tempo.

It takes know-how to put a complicating factor, the eye-fatiguing reflections off bright chrome, to work like this. For Planned Lighting to fit your special needs, call the nearest Edison office. The same helpful advisory service is yours without cost or obligation.



# Detroit Edison



W

E

I

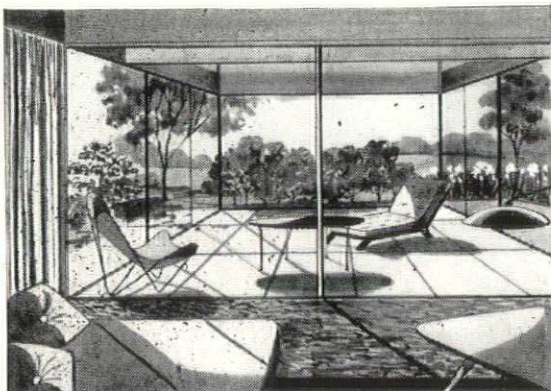
V

A

N

A

P



## a sliding glass living-room wall to open on terrace or patio

Panaview sliding glass panels — built by the makers of Glide — are framed in highest quality heavy gauge extruded aluminum. All sash slide, all hardware is flush, sill track is flush with floor. Glazed with  $\frac{3}{4}$ " plate glass or Thermopane. Available in a complete range of standard sizes.

Write or phone us for complete information

## Standard Building Products

14200 Cloverdale  
Detroit 38, Mich.

WEBster 3-2618

# McDonnell Brothers, Inc.

Representing

KERRIGAN IRON WORKS, INC.

STEEL GRATINGS  
STAIR TREADS

3930 Lonyo Road  
Detroit 10, Michigan  
LUzon 1-4550

## Good Planning Should Include Good Protection

Those Who Play Safe  
Always Specify  
Uniformed Armed Guards  
During Construction Work

## BONDED GUARD SERVICES

441 E. GRAND BLVD., DETROIT 7  
LORAIN 8-4150

Used by All Big Contractors on All Construction

**DON'T TAKE  
CHANCES HERE!**

Excessive temperature and pressure in hot water heaters can mean trouble, and real danger! Here's the best answer to these twin hazards yet developed. The McDonnell 202 Series combines, for the first time, (1) a time-tested pressure relief valve Btu.-rated in steam capacity, and (2) a time-tested temperature relief valve Btu.-rated and listed by the American Gas Association. Verna-therm element assures accurate, positive operation and drip-tight reseating. New fixture connection for service water flow simplifies installation and eliminates air accumulation in valve. Available with opening pressure settings of 75, 100 or 125 lbs.

Write for complete engineering facts

McDONNELL & MILLER, INC.  
3500 N. Spaulding Ave., Chicago 18, Ill.

**NEW McDONNELL  
202 SERIES  
COMBINATION  
T & P VALVE**



Michigan Representative:

WM. G. BOALES & ASSOC., INC.  
1150 W. Baltimore Ave., Detroit 2, Mich. TRinity 2-4242

COMPLIES WITH NEW DETROIT PLUMBING CODE

may '54 monthly bulletin





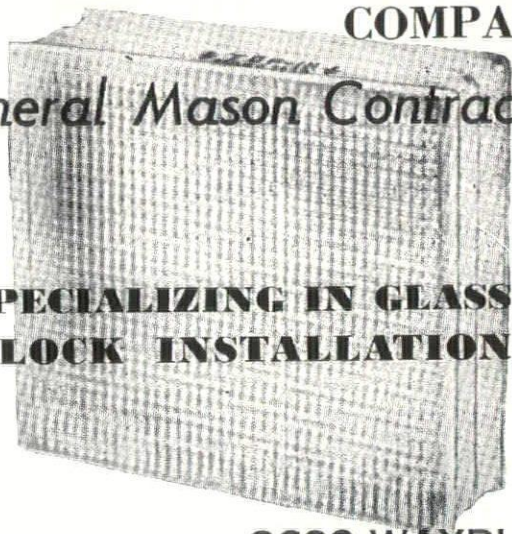


# G. FORTE

COMPANY

General Mason Contractor

**SPECIALIZING IN GLASS  
BLOCK INSTALLATION**



3692 WAYBURN  
DETROIT, MICH.  
TUXEDO 2-2197

## Superior

MATERIALS

WORKMANSHIP

SERVICE

westover-kamm company

ARCHITECTURAL WOODWORK  
MOVABLE OFFICE PARTITIONS

general office & factory, bay city, mich.  
telephone bay city 3-6558

detroit office: 403 donovan building  
telephone woodward 2-1001

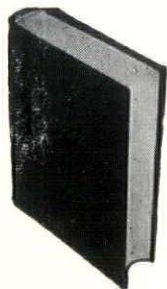
## Estimating Construction Costs

by R. L. Peurifoy  
Professor of Civil Engineering

A and M College of Texas  
315 pages, 6 x 9, 60 illus., \$7.50

You'll make much more realistic estimates with the accurate guidance this practical book gives you on all types of major construction. Covering each type in detail, it brings you simpler ways of appraising the many varying factors that influence the costs of labor, equipment, and materials. PLUS including your overhead and profit factors as well.

Includes material  
on cost of fabricat-  
ing structural steel  
and erecting steel  
structures.



OVER  
100  
TABLES

Over 100 time-saving tables simplify involved combinations of labor, equipment, and materials. These tables break down operations into workable units such as the amount of material needed for a particular job . . . the man-hours it takes . . . the hourly cost of owning and operating the equipment used on the job. They give you a variety of valuable estimator's data in quick-reference form.

FOR EXAMPLE, you will find tables that tell you the hauling capacities of trucks . . . rates of handling earth by hand . . . representative rate of drilling rock with jackhammers and wagon drills . . . data on standard Raymond concrete piles . . . quantities of material for one cubic yard of mortar.

The book contains unusually comprehensive descriptions of the means for determining the production rates of both labor and equipment. It gives positive help, enabling you to understand the factors which affect production rates, such as how rates for digging may differ between hard and soft earth . . . how maneuverability in close quarters cuts equipment production, etc.

CONTENTS: Handling and Transporting Materials. Earthwork and Excavation. Highways Foundations. Concrete Structures. Floor Systems. Masonry. Timber Structures. Steel Structures. Water and Sewerage Systems. Total Cost of Engineering Projects. Appendix.

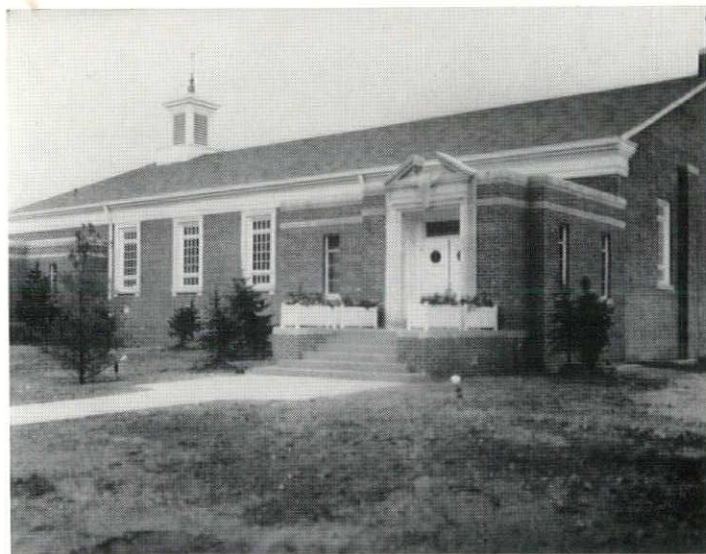
Write to

**MONTHLY BULLETIN**

### TREATS SUCH SPECIALTIES AS:

- tilt-up concrete
- new floor systems
- wellpoint systems
- water and sewer pipes
- highways
- timber structures
- welded steel structures

120 MADISON AVE.  
DETROIT 26, MICH.



Guardian Lutheran Church  
24544 Cherry Hill  
Dearborn, Michigan

The New Building  
Will Serve As A  
Church and Parish Center

A Fire Safe  
CHURCH AND PARISH CENTER  
constructed with

**HURON MASONRY CEMENT**

Maul and Lentz  
Detroit, Michigan  
Architects

Ray Misch & Son  
Detroit, Michigan  
General Contractors

Horn Fuel & Supply Co.  
Detroit, Michigan  
Dealer



**HURON PORTLAND CEMENT CO.**  
GEN. OFFICES: FORD BLDG. - DETROIT 26, MICH.



# saginaw valley

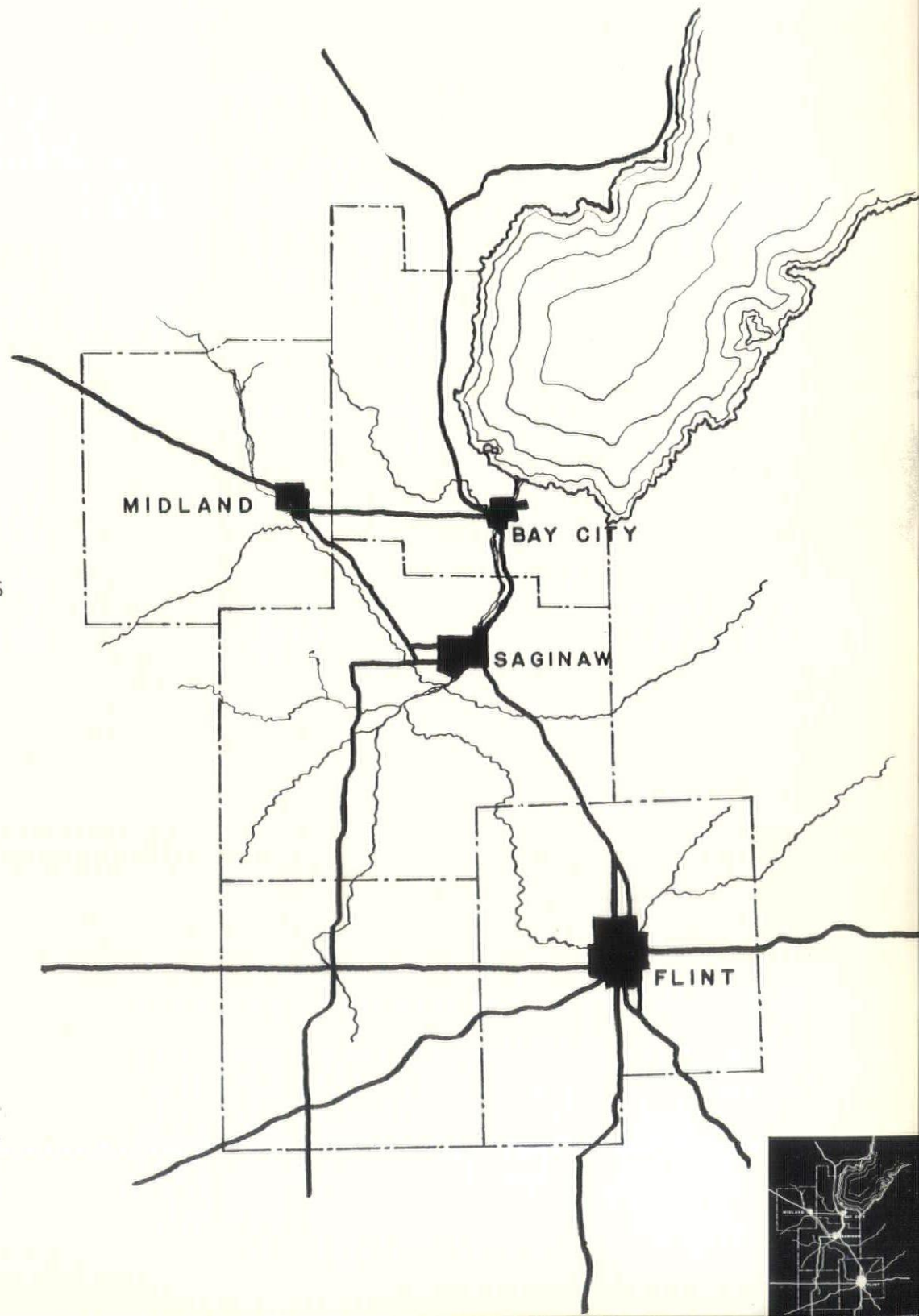
THE SAGINAW VALLEY CHAPTER, AMERICAN INSTITUTE OF ARCHITECTS, ORGANIZED IN 1945, ENCOMPASSES THAT PORTION OF THE STATE OF MICHIGAN EMBRACED BY THE COUNTIES OF BAY, GENESEE, MIDLAND, SAGINAW AND SHIAWASSEE

## CORPORATE MEMBERS

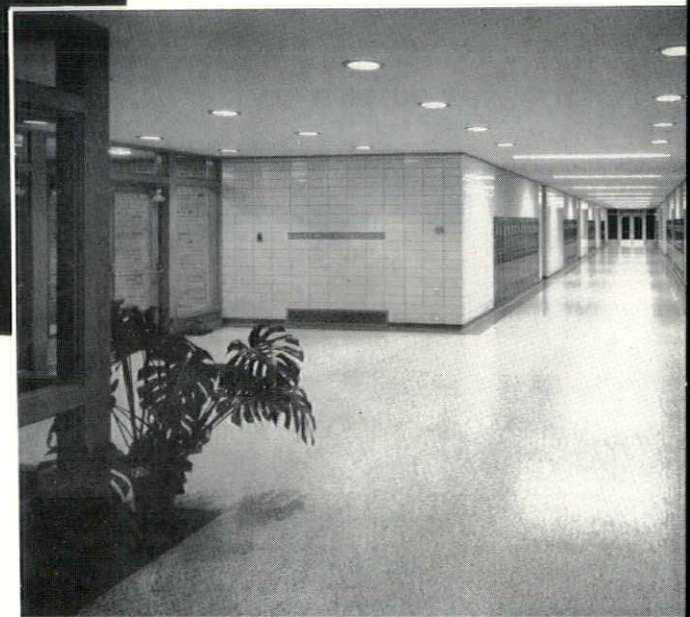
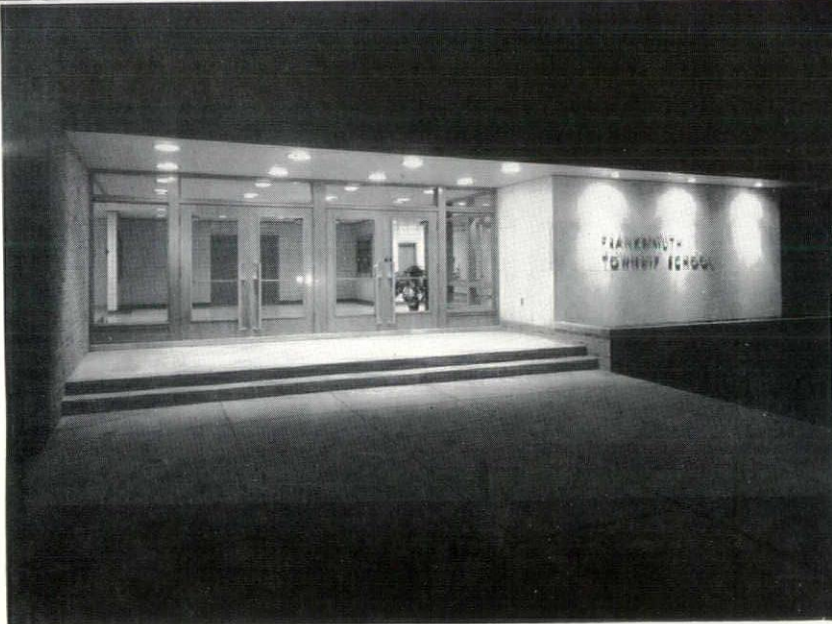
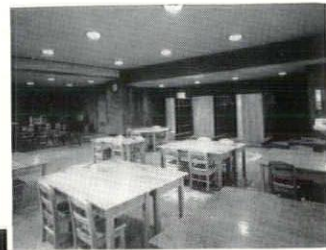
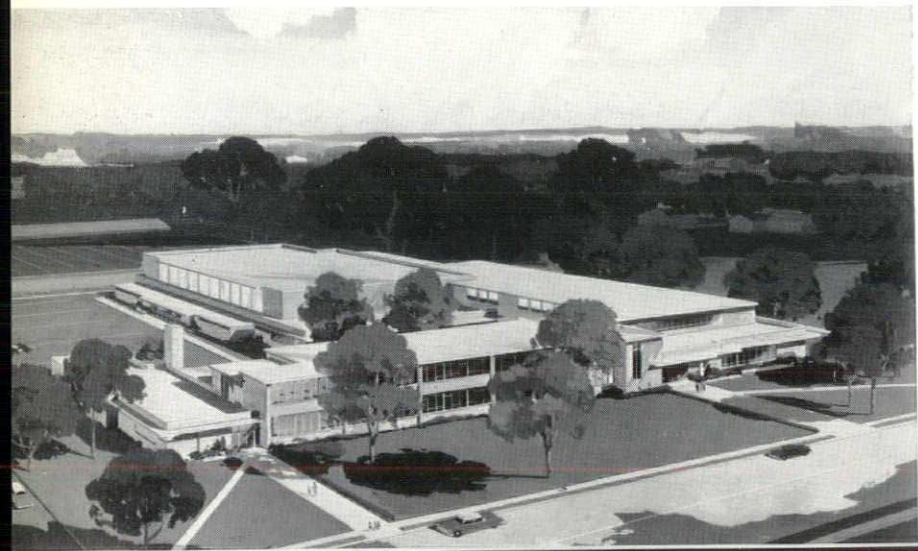
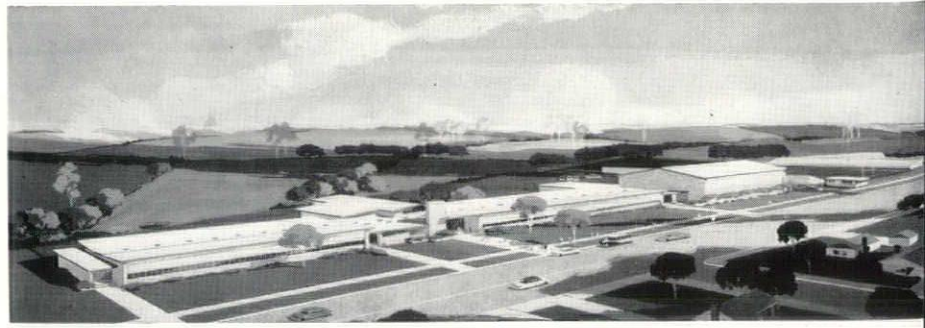
SAMUEL C. ALLEN  
GEORGE J. BACHMANN  
GLENN M. BEACH  
PAUL A. BRYSELBOUT  
RALPH T. DITTMER  
ALDEN B. DOW  
NEEL T. EUBANK  
ROBERT B. FRANTZ  
WILLARD E. FRASER  
ROBERT GOODALL  
JOSEPH C. GODDEYNE  
GEORGE S. HAWES  
A. CHARLES JONES  
DONALD A. KIMBALL  
HERMAN J. KLEIN  
RALPH W. KNUTH  
JOHN Mac KENZIE  
S. ALEXANDER NURMI  
P. R. PEREIRA  
LELAND G. PRIEST  
JAMES A. SPENCE  
FREDERICK E. WIGEN

## ASSOCIATE MEMBERS

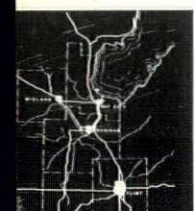
H. C. ALLISON  
ROBERT K. BERRY  
VINCENT T. BOYLE  
HARRY L. CUMMINGS  
PETER FRANTZ  
ROBERT S. GAZALL  
CLIFFORD E. GIBBS  
RICHARD E. GUSTAFSON  
JACKSON B. HALLET  
DONALD R. HUMPHREY  
ROBERT G. MENGEL  
DOUGLAS C. MORRIS  
AULDIN H. NELSON  
WILLIAM O. PRINE  
DONALD SELLERS  
EUGENE C. STARKE  
WILLIAM G. TOLL  
JAMES E. TOMBLINSON  
FRANCIS E. WARNER  
WILLIAM G. WESOLEK



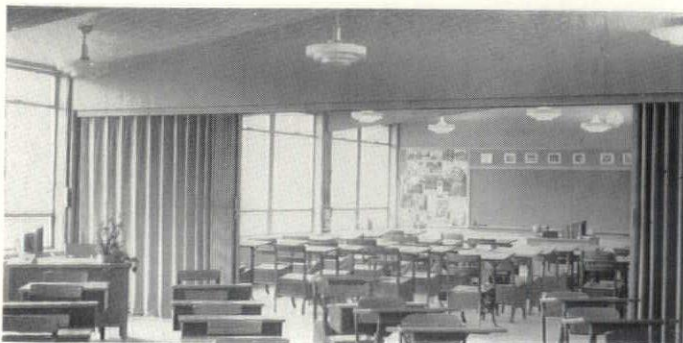
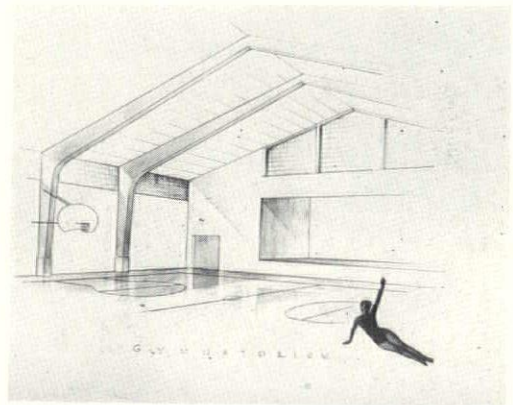
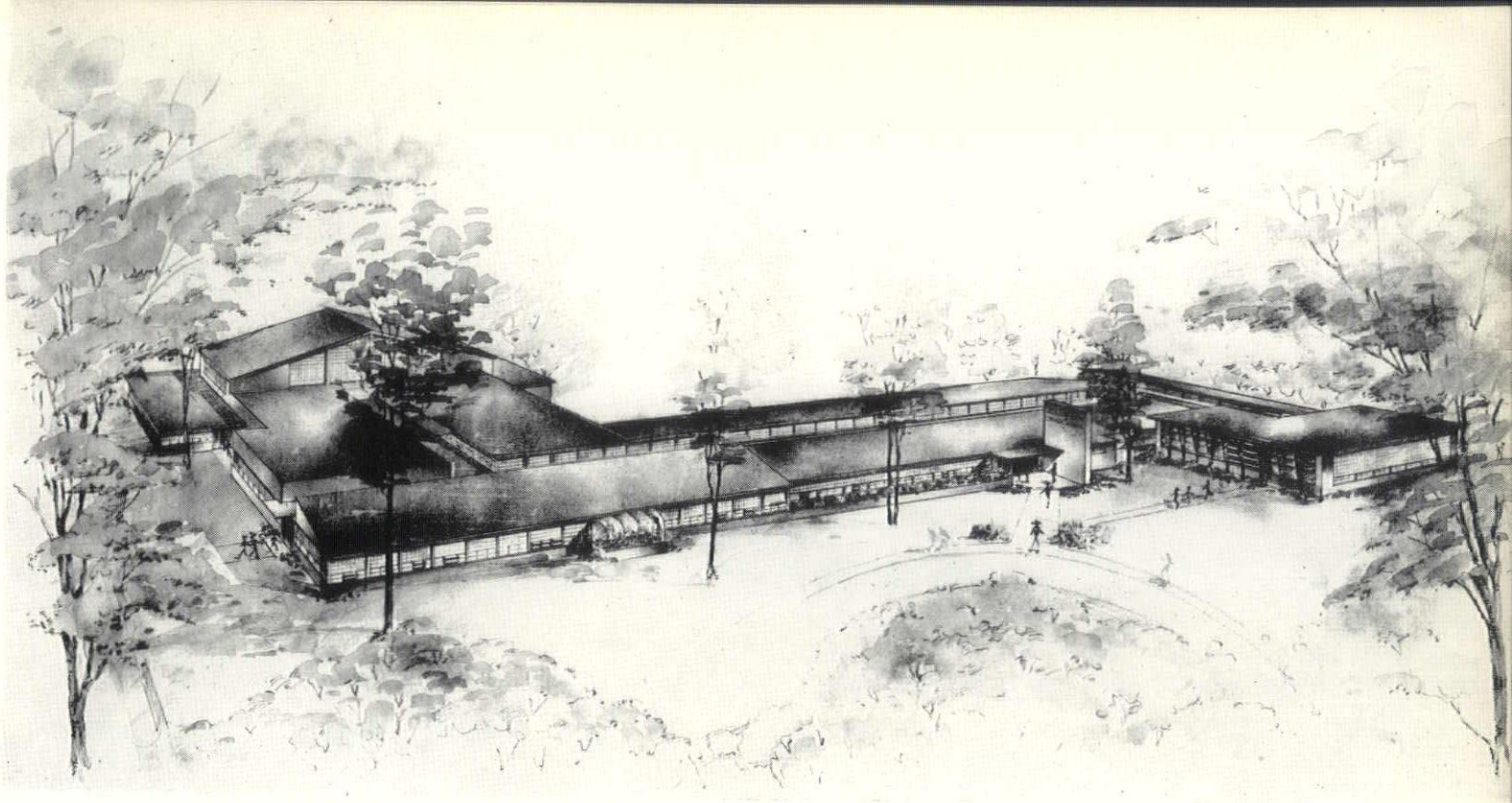




FREDERICK E. WIGEN











MacKENZIE, KNUTH AND KLEIN

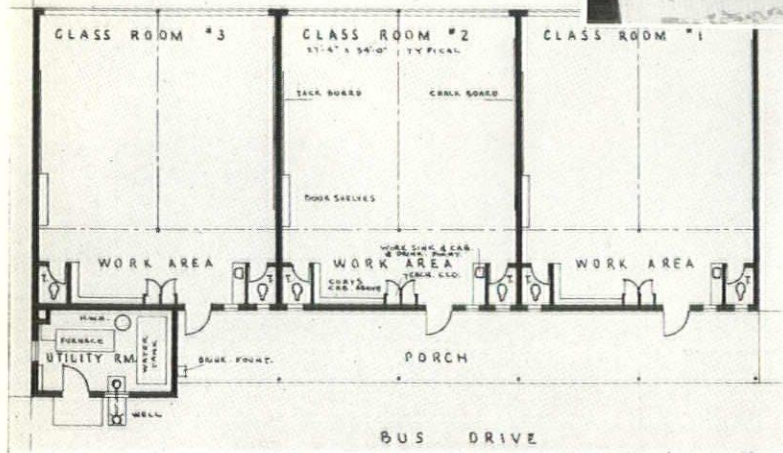
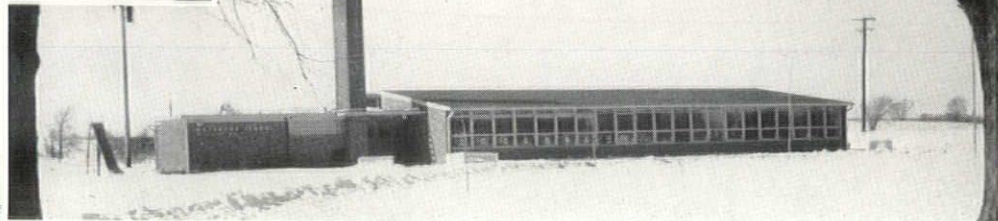




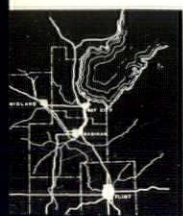
DONALD A. KIMBALL







A. CHARLES JONES



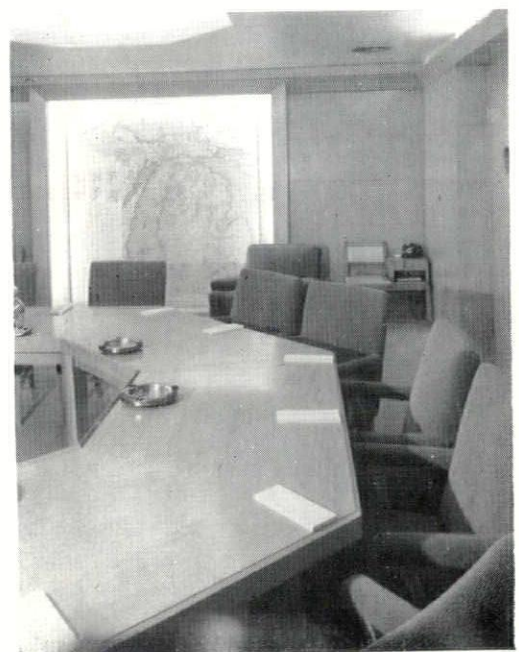
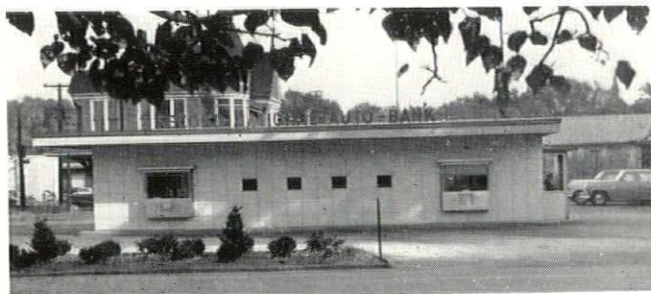




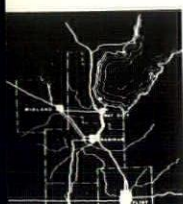
ROBERT GOODALL



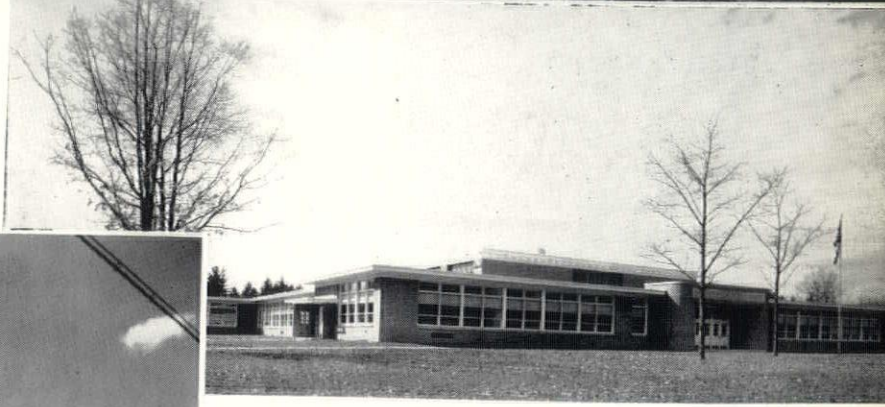




FRANTZ AND SPENCE



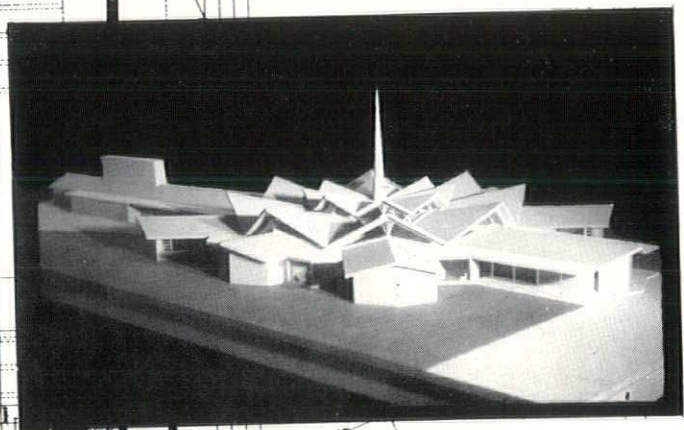
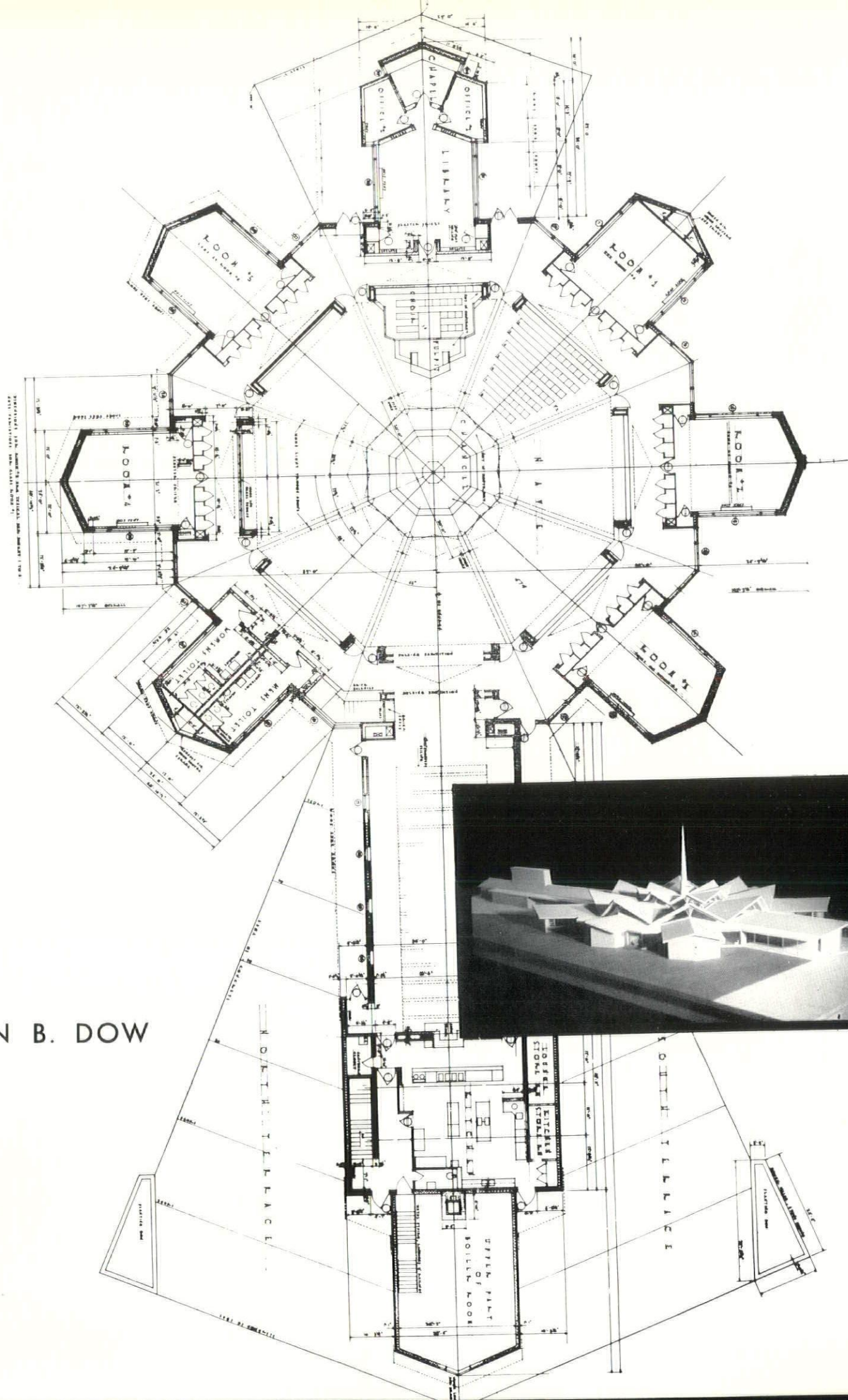




JOSEPH C. GODDEYNE



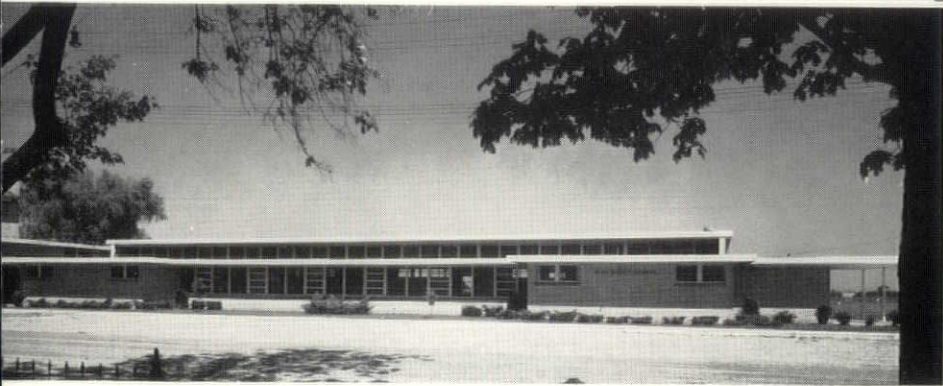
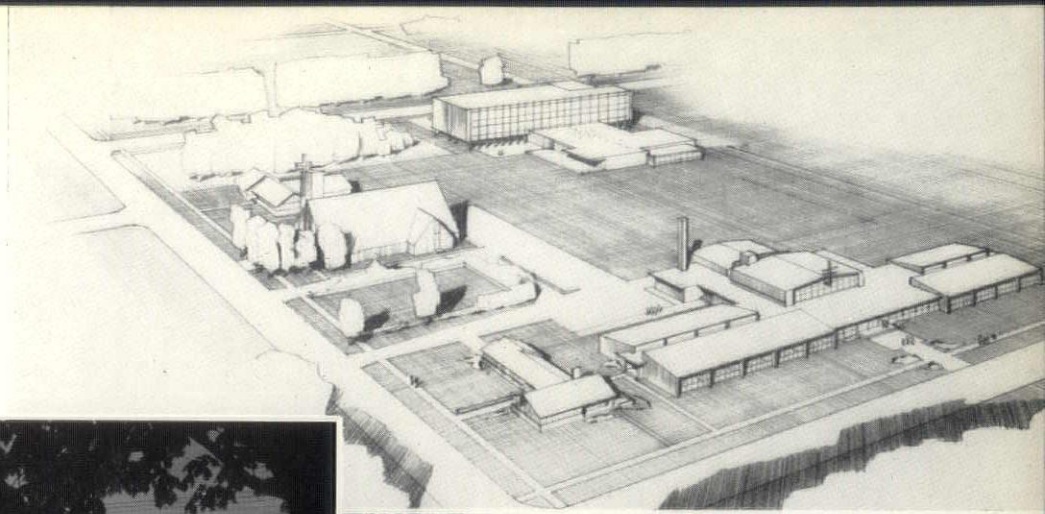




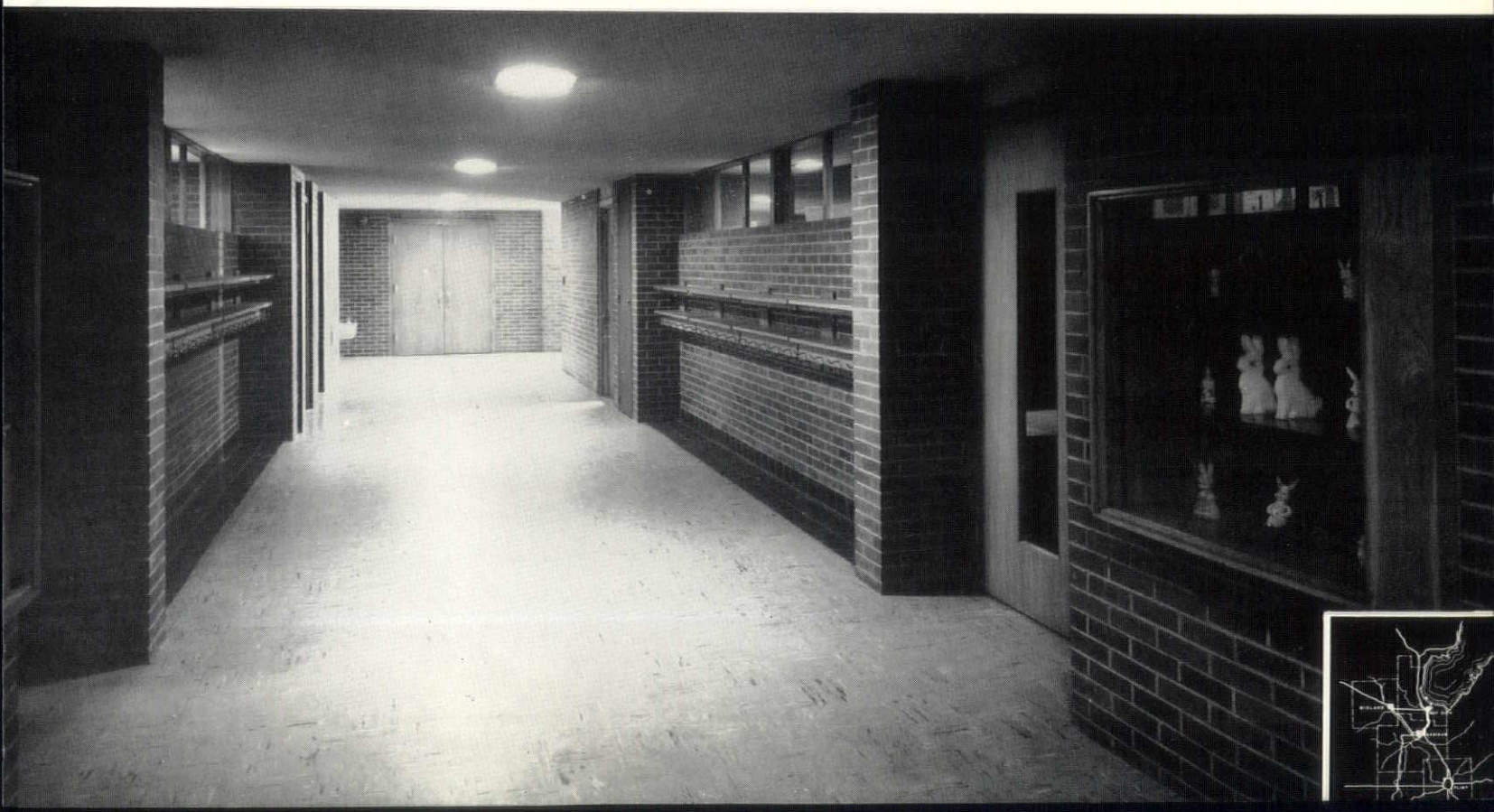
ALDEN B. DOW



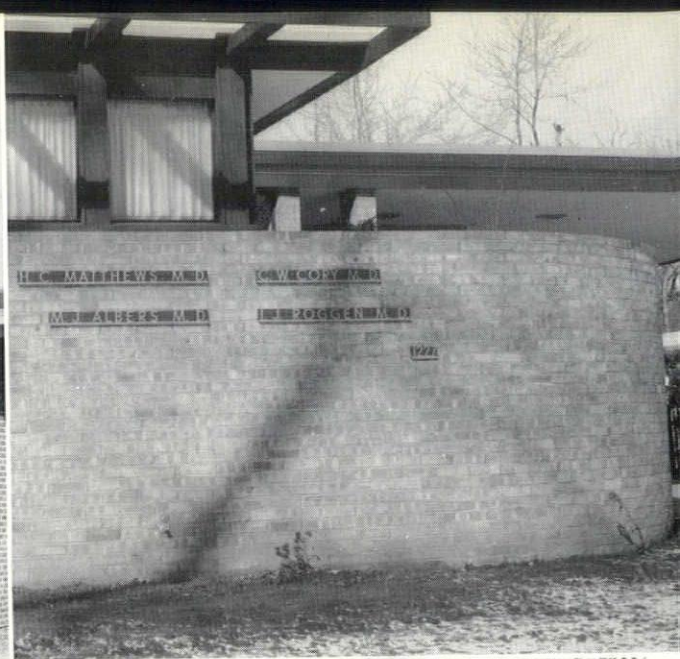




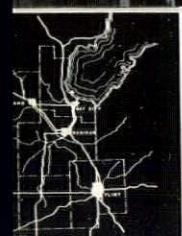
PAUL A.  
BRYSSSELBOUT







GLENN  
M.  
BEACH



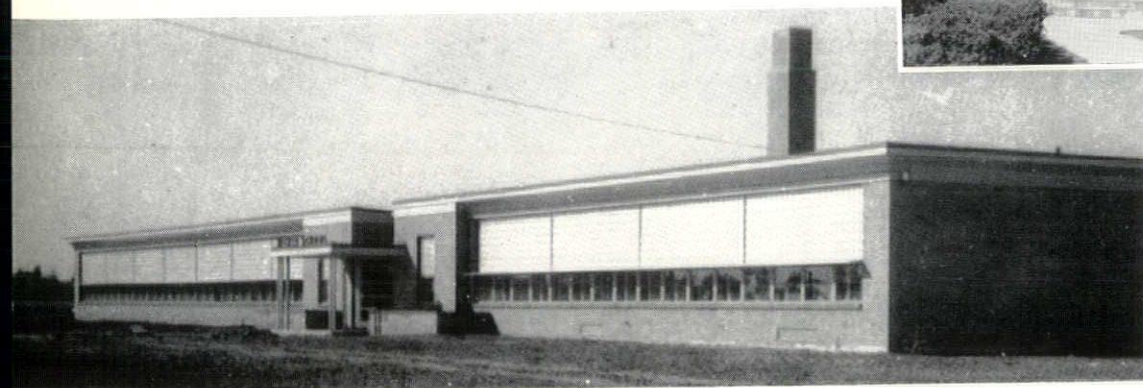
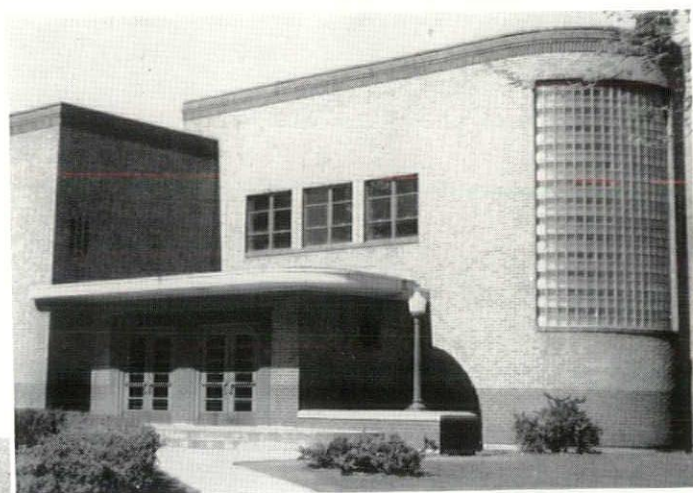




GEORGE J. BACHMANN







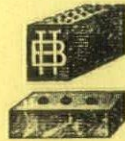


# Thomas Brick & Tile Co.

14360 Livernois Ave.  
Detroit 4, Michigan

FACE BRICK — GLAZED  
BRICK — PAVING  
BRICK — ACID BRICK  
— REFRACTORY BRICK  
AND CEMENTS — CUP-  
PLES ALUMINUM WIN-  
DOWS — WARE ALUM-  
INUM WINDOWS

Est. 1896



Telephone

TOWNSEND 8-1354

NEON *and* METAL LETTERS  
**Long** SIGN CO.  
6209 HAMILTON AVE.  
DETROIT 2, MICH.

PORCELAIN • STAINLESS • ALUMINUM

THE  
JOHN H. BUSBY  
C O M P A N Y  
  
E L E C T R I C A L  
C O N T R A C T O R S

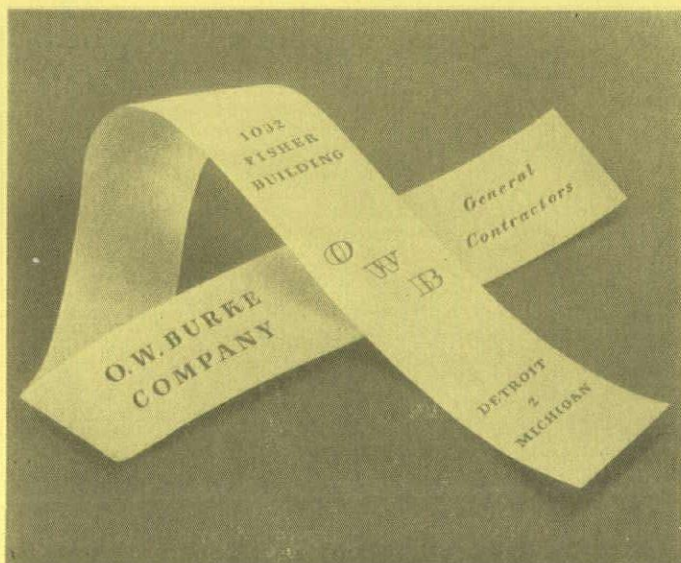
826 Cherry Street  
Detroit 1, Mich.  
WOODWARD 1-1681

*The W. E. Turley Company*

*Assisting Architects in Fine Custom Interiors*

WE MANUFACTURE FURNITURE  
AND WEAVE CARPETS AND FABRICS  
TO YOUR SPECIFICATIONS

2900 WEST GRAND BOULEVARD  
DETROIT 2, MICH. • TRINITY 1-1080



*On Top Since '79*  
**J. D. Candler**  
ROOFING COMPANY, INC.  
551 E. VERNOR HWY. • DETROIT  
D. W. CANDLER • DR. C. L. CANDLER

ROOFING AND  
SHEET METAL  
WORK  
INDUSTRIAL AND  
RESIDENTIAL  
NEW ROOFS —  
ASPHALT  
SHINGLES  
COMPLETE  
ROOFING AND  
SHEET METAL  
REPAIRS FOR  
OVER 72 YEARS





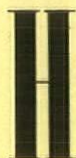
## What Other Information Should Be Obtained in the Field?

The height of the water table is of first importance. If the soil is saturated above the level to which free water will rise in the drill-hole, it follows that the moisture above this level is retained by capillarity, and its weight contributes to the stability of the soil mass.

On sloping ground, the field engineer should look for evidence of previous earth-slips. These may be betrayed by natural berms on the slopes, or by characteristic bends in the tree trunks. Some engineers value a record of the number of blows required to drive the casing a given distance, as indicative of the relative bearing capacity of the soil at various depths.

## Michigan Drilling Co.

13911 Prairie Ave.  
Detroit 4, Michigan  
Webster 3-8717



## HANLEY COMPANY

Established 1893

LARGEST MANUFACTURERS  
OF GLAZED AND FACE BRICK  
IN THE EAST

(Capacity 7,000,000 Units Per Mo.)

FACE BRICK  
GLAZED BRICK  
ACID BRICK  
UNGLAZED FACING TILE  
GLAZED FACING TILE  
QUARRY TILE  
FLOOR BRICK

E. F. Zerga, Mgr.  
14523 SCHAEFER HWY., DETROIT 27  
VERmont 7-3200

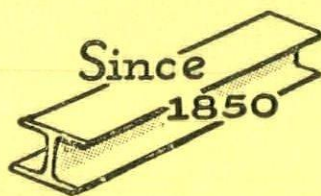
## wallace candler, inc.

COMMERCIAL  
AND INDUSTRIAL  
ROOFING &  
SHEET METAL  
SERVICE

9000 roselawn  
webster 3-7544  
detroit 4

## KOEHLER BROS.

2000 Holland Ave., Saginaw, Mich.  
Saginaw 3-4491



SERVING  
THE ARCHITECTS  
OF  
BAY CITY  
SAGINAW  
MIDLAND

UNDERWRITERS' LABORATORIES APPROVED  
**VAULT DOORS**  
GROUT OR NON-GROUT

Complete SERVICE Facilities

**Diebold**  
INCORPORATED

4105 Cass Ave. Detroit 1, Mich. TE. 3-4477

Now . . . an amazingly complete work  
to help everyone interested in building



## BUILDING FOR INVESTMENT

by Clinton H. Cowgill

Head, Dept. of Architecture  
Virginia Polytechnic Institute

This valuable book examines the many problems of building from the point of view of anyone with broad interests in building finance. It sets forth the procedures involved in the design, construction and remodeling of buildings of every type from houses to industrial plants. Professor Cowgill explains the relation of building to site, neighborhood, and geography. He discusses in easy-to-read language all the major building types and fully covers architecture, real estate, investment, ownership, appraisal, purchase, sale, finance, law and urban and regional planning.

Architects should find this big book useful as a general guide and for specific help in building finance problems. 482 Pages, \$7.00.

ORDER NOW FOR IMMEDIATE DELIVERY

## NATIONAL ARCHITECT

120 MADISON AVENUE  
Detroit 26, Michigan



# Heineman & Lovett Co.

WATERPROOFING  
ENGINEERS AND  
CONTRACTORS

GENUINE  
**IRON BOND**  
SYSTEMS

For Basements, Pools, Tanks  
And Other Sub Structures

**H**I-TEX  
CEMENT  
COATINGS

Restoring Concrete & Masonry  
Super Structures, Cement Coating  
For Waterproofing & Decoration

5327 Tireman Ave.  
Detroit 4, Michigan  
TYler 6-1226

*“depend on  
a dependable  
name”*

## JOHN A. MERCIER BRICK COMPANY

3895 Roulo Ave., Dearborn  
VI. 1-0761

*Manufacturer and Distributor*

*Mercrete*  
**SLAG BLOCK**  
Lighter in Weight  
**SLAG BRICK**  
Lighter in Color

QUALITY FACE BRICK

*“specify  
the best”*



B Roadway 3-2500

## WALTER L. COUSE & CO.

Engineers & Contractors

12740 LYNDON AVENUE  
DETROIT 27, MICHIGAN

## Nelson Company

PLUMBING  
HEATING &  
AIR CONDITIONING  
SUPPLIES

WHOLESALE

MAIN OFFICE  
and  
DISPLAY ROOM

2604 Fourth Ave., Detroit 1  
WOodward 2-4160

ROYAL OAK  
GROSSE POINTE  
ANN ARBOR

## H. H. Dickinson Company

COMPLETE  
BUILDERS'  
SUPPLIES

OFFICE  
AND  
WAREHOUSE:  
9940 Roselawn Avenue  
Detroit 4, Michigan

PHONE:  
WEbster 3-6263

## Maurice V. Rogers Company

GENERAL  
CONSTRUCTION

CUSTOM RESIDENTIAL  
COMMERCIAL BUILDING

UNiversity 3-3171  
15849 WYOMING AVE.  
DETROIT 21, MICHIGAN





# moynahan bronze co., inc.

flat rock, mich., du. 2-3234 • detroit office, 9545 grand river, te. 4-2198

ORNAMENTAL  
METALS

## DARIN & ARMSTRONG, INC.

*General Contractors*



DETROIT 3, MICHIGAN

## M. DEN BRAVEN CO. established 1912

SHEET METAL  
VENTILATING  
AIR CONDITIONING

9080 ALPINE AVENUE  
DETROIT 4, MICHIGAN  
WE. 3-7494-5-6



## ALUMINUM AND ARCHITECTURAL METALS CO.



MISCELLANEOUS IRON AND ORNAMENTAL METAL WORK  
ALUMINUM, BRONZE, AND STAINLESS STEEL  
STEEL STAIRS

1974 Franklin Street, Detroit 7, Michigan • LOrain 7-6880

## F. H. MARTIN CONSTRUCTION CO.

955 E. JEFFERSON AVE. DETROIT 7, MICHIGAN  
WOODWARD 1-4890

• SINCE 1884 •



LUMBER COMPANY

14400 WYOMING WE. 3-4830  
Detroit 21, Michigan



F. M. SIBLEY  
LUMBER CO.  
LO. 7-5100  
6460 Kercheval Avenue  
Detroit 14, Mich.

*Wm. F. Back*   
LUMBER CO. 5172 ST. JEAN AVENUE  
DETROIT 13, MICHIGAN WA 1-9460

GRACE HARBOUR  
Lumber Company  
13833 West Chicago ESTABLISHED  
DETROIT 28, MICH. WE 3-4913



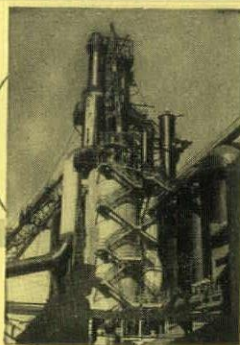
# R. C. HENDRICK & SON

GENERAL CONTRACTORS

427 Atwater Street, Phone 8116  
Saginaw, Michigan

General Contractors on  
St. James High School, Bay City  
Franciscan Friary, Saginaw

BUILDING IN MICHIGAN FOR OVER 70 YEARS



*The Mack* IRON WORKS COMPANY

• STEEL FABRICATION •

BRONZE  
ALUMINUM

SANDUSKY, OHIO.

## MIDWEST *architectural* METALS CO.

Fabricators of Custom Metal Work  
ALUMINUM, BRONZE, STAINLESS STEEL

KEnwood 4--9060

11661 Woodbine Ave.  
Detroit 28, Michigan

## THE DUNN - RAINEY COMPANY

Manufacturers

"DURA-GLAZE" ELASTIC GLAZING COMPOUNDS  
"DURA-SEAL" ELASTIC CAULKING COMPOUNDS  
METAL AND WOOD SASH PUTTY

4461 W. Jefferson Ave.  
Detroit 9, Michigan

Telephone TA. 5-7156

For over half a century Detroit's quality roofer

*Robert Hutton & Co. Inc.*

ROOFING AND SHEET METAL CONTRACTORS

622 FORT ST. E. • DETROIT 26 • WOODWARD 2-1073

JOHNS-MANVILLE PRODUCTS

SEE OUR  
CATALOG  
in  
SWEET'S FILE  
ARCHITECTURAL

**Plastoid**

WOOD & METAL SASH PUTTIES  
AND CAULKING COMPOUNDS

LABORATORY-  
CONTROLLED  
TIME-PROVEN  
*Specifications  
Products by*

**PLASTI-GLAZE**  
GLAZING COMPOUNDS

**PLASTIC PRODUCTS COMPANY**

General Offices and Laboratories

6457 GEORGIA AVENUE • DETROIT 11, MICHIGAN

Factories: Jersey City  
Detroit • New Orleans  
Chicago • Oakland, Calif.



School, Church  
Laboratory, Library  
Furniture & Equipment

WINDOW SHADES      CHALKBOARDS  
DARKENING SHADES      CORKBOARDS

We Stock — We Install

**B. F. FARNELL COMPANY**

435 W. Seven Mile Rd., Detroit 3, Michigan  
(Between Woodward and John R)      TOWNSEND 8-9231

**OTTO H. SAUER CO.**

**General Building Contractors**

*Churches, Commercial, Custom Residential*

5735 Rohns Avenue  
Detroit 13, Michigan  
WALNUT 1-3054

**M. H. WILKINS CO.**

*Structural Steel and Steel Joists  
Fabricated and Erected*

20501 HOOVER, DETROIT 5  
LAKEVIEW 6-1000

**bent. young  
waterproofing co.**

bituminous waterproofing  
and dampproofing

TO. 9-3227  
TO. 9-0047

427 W. SEVEN MILE ROAD, DETROIT 3, MICHIGAN

**ACE SPRINKLER  
COMPANY**

ENGINEERS AND CONTRACTORS  
For Automatic Sprinkler Fire Protection  
In Commercial & Industrial Properties

12125 CARDONI AVENUE  
HIGHLAND PARK 3, MICH.  
TULSA 3-0511

GYPSUM ROOF DECKS  
Fireproof  
Lightweight  
Insulating

**hoge-warren-zimmermann co.**

E. C. HOGE — J. H. HOGE  
5300 Vine St., Cincinnati 17, Ohio  
Avon 5621

ALFRED W. WARREN  
111 Washington St., Chicago 1, Illinois  
State 2-8029

JOHN S. M. ZIMMERMANN  
4500 E. Nevada Ave., Detroit 34, Mich.  
TWINBROOK 2-5421

**HAMILL  
ELECTRIC COMPANY**

*Electrical Contracting Engineers*

2921 EAST GRAND BOULEVARD  
DETROIT, (2) MICH.

TRINITY 1-2650

**Turner-Brooks, Inc.**

*Floor Covering and Acoustical Contractors*

9910-30 DEXTER BOULEVARD  
DETROIT 6, MICHIGAN

TOWNSEND 8-2470



ENGINEERING • MATERIAL • INSTALLATION

# N. W. Hamill Co.

Caulking  
Tuck-Pointing  
Weatherstrips

407 EAST FORT ST.  
DETROIT 26  
WOodward 1-0110

ATLANTIC METAL PRODUCTS, INC.

- Hollow Metal Doors & Frames
- Kalamein & Tincled Doors

KANE MFG. CO.

- Light Proof Shades

VENTILOUVRE CO.

- Louvres

SEAPORCEL METALS, INC.

Architectural Porcelain Enamel Work

STEELBILT, INC.

Steel Horizontal Sliding Glass  
Doorwalls & Windows

THE KAWNEER COMPANY

Institutional Entrances  
Aluminum Flush Doors

## THE TAUBMAN COMPANY

General  
Contractors

QUALITY CONSTRUCTION

COMMERCIAL • INDUSTRIAL • INSTITUTIONAL

10325 PURITAN AVENUE  
DETROIT 21, MICHIGAN

TEL. UN. 4-8638

## R. E. LEGGETTE CO.

Established 1932

Acoustical & Building Specialty Contractors

CELOTEX Acoustical Products

SANYMETAL Toilet Partitions

INSULROCK Structural Insulating  
Acoustical Roof Deck

9335 St. Stephens Ave., Dearborn, Mich., LUzon 4-2000

CALL US FOR QUOTATIONS  
ON ANY BLUE PRINT  
FOR  
PETERSON SLIDING WINDOWS  
RESIDENTIAL OR COMMERCIAL

## SCHAAFSMA'S

1444 Chicago Drive, S.W.  
Grand Rapids, Michigan  
CH. 1-1031

## Detroit Acoustical Contracting Company

ACOUSTICAL CONTRACTORS

Representing

ARMSTRONG CORK CO.

CERTAIN-TEED PRODUCTS CO.

17137 James Couzens Highway  
Detroit 35, Michigan  
UNiversity 4-7888

## *turner engineering company*

DEPENDABLE  
ELECTRICAL  
CONSTRUCTION  
FOR 38 YEARS

464 Brainard Street  
Detroit 1, Michigan  
TEmple 1-0470

## B & L ELECTRIC C O M P A N Y ELECTRICAL CONTRACTORS

18424 Fitzpatrick Ave.  
Detroit 28, Michigan  
VERmont 7-3800

ENGINEERING & CONSTRUCTION

Underground  
LAWN IRRIGATION  
Contractors

Complete Plan &  
Specification  
Service

A. J. Miller,  
Civil Engineer

**A. J. MILLER, Inc.**  
ESTABLISHED 1923

2337 W. McNichols Rd., Detroit 21 UN. 1-3393



# No Building is Better than its Floors!

Whitcomb-Bauer Flooring, Inc. can solve your hardwood flooring problems. Distributors and installers of IRONBOUND CONTINUOUS STRIP\* hard maple flooring, flat grain or edge grain, the finest floor obtainable for gymnasiums, class rooms, bakeries, newspaper plants and industrial areas. We specialize in designing and installing heavy duty removable panels for press plants.

- Press plant panels
  - Nailed floors, all types
    - Worthwood end grain Fir flooring
      - IRONBOUND CONTINUOUS STRIP Maple flooring

\*Reg. U.S. Pat. Off.



IRONBOUND CONTINUOUS STRIP\* Maple over cork in gymnasium

## WHITCOMB-BAUER FLOORING, INC.

OFFICE AND WAREHOUSE • 10301 LYNDON AT GRIGGS • DETROIT 21, MICHIGAN • WEBSTER 3-4320

MEMBER



MARBLE INSTITUTE OF AMERICA, INC.

## WOLVERINE MARBLE CO.

DOMESTIC & IMPORTED MARBLES FOR ALL FINE BUILDING PROJECTS

SERVICE  
SINCE  
1923

OFFICE & FACTORY  
14269 FLEMING AVE.  
AT DET. T. R. R.  
DETROIT 12, MICHIGAN  
TOWNSend 8-7113

## CENTURY BRICK COMPANY

*face brick*

norman - roman and standard size - pc glass block - chem brick

*for beauty and permanence  
better brick builds better buildings*

14900 LINWOOD AVENUE, DETROIT 21, MICHIGAN

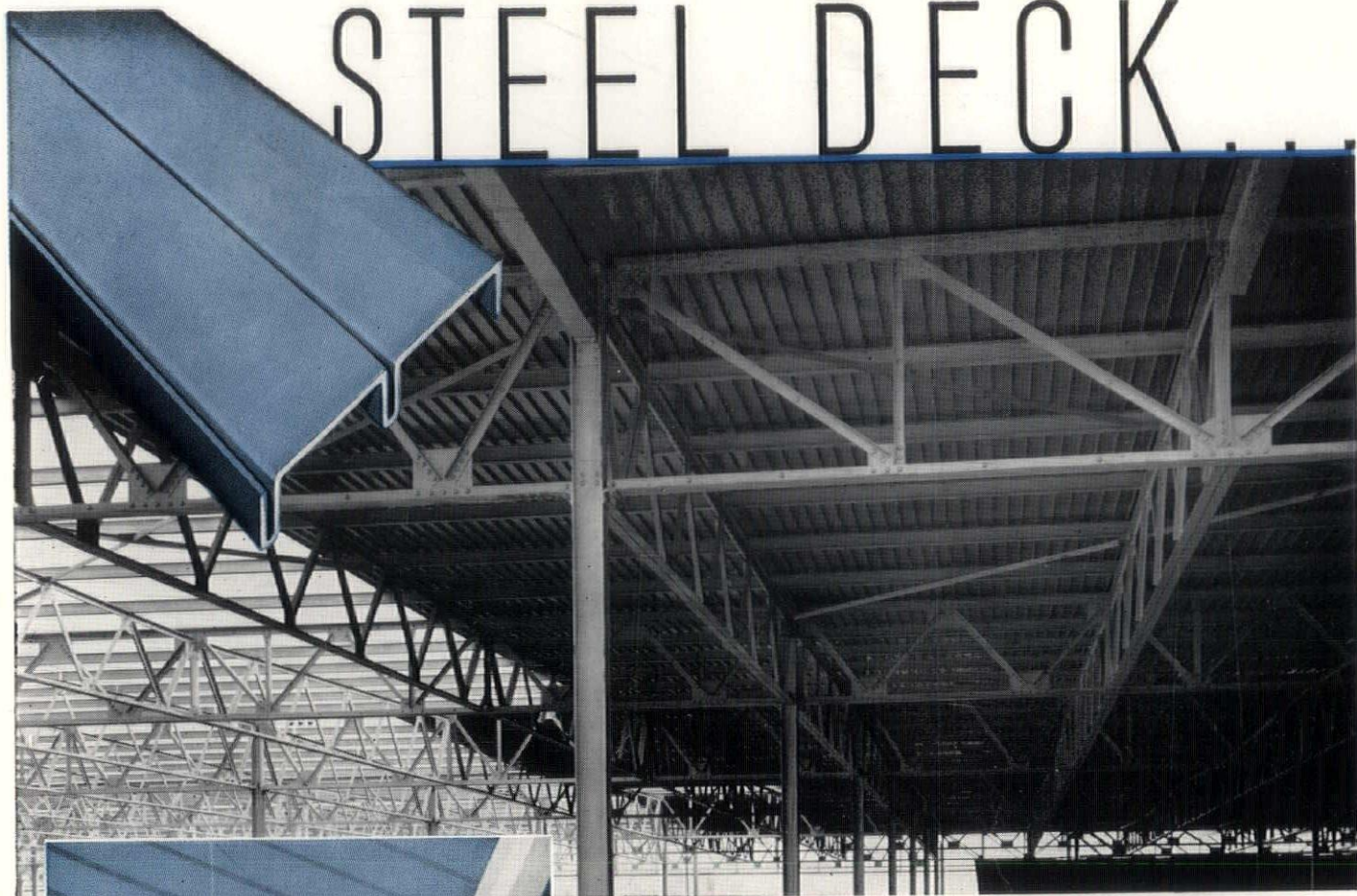
UNiversity 1-8200

## FLINT MOSAIC TILE & TERRAZZO, INC.

2441 EAST BRISTOL ROAD, FLINT, MICHIGAN — FOR 30 YEARS, SAME PHONE: FLINT 3-3551



# STEEL DECK

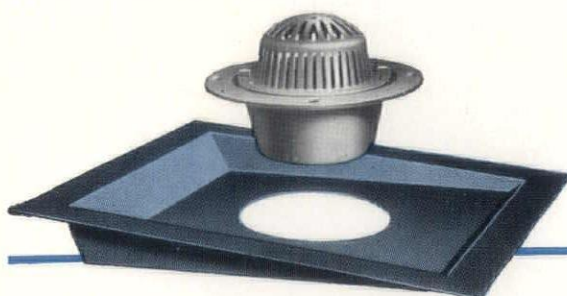


## Now Provides SAFEST ROOF, and it is the LOWEST COST ROOF Obtainable!

A new concept in roof construction adds to Steel Deck's many advantages over other types of deck material. An effective, new type vapor seal provides safeguard against pitch seepage under extreme fire conditions. Now, more than ever before, Steel Deck is the most practical deck material available for modern roof construction. Year after year, Steel Deck roofs a greater percentage of new construction. The reason for this is simple . . . the over-all cost of a Steel Deck Roof is less than any other type of permanent, firesafe material. Steel Deck's light weight, and the fact that it can be insulated to the exact degree to meet local requirements, permits substantial savings in the supporting structure—total dead roof load will prove to be less than any other type in any given locality. Mahon Steel Deck is available in Galvanized or Enamel Coated Steel . . . stiffening ribs are vertical—no angular or horizontal surfaces where troublesome dust may accumulate. In the enamel coating process, the metal is chemically cleaned, phosphated, and treated with a chromic acid solution to provide paint bond, and the protective coating of synthetic enamel is baked on at 350° F. prior to roll-forming. Consider these extra-value features . . . See Sweet's Files for complete information, or write for Catalog B-54-A.

### BUILT-UP SADDLES ELIMINATED

Built-up saddles are eliminated in Steel Deck Roofs. Purlins can be set to create valleys at sump locations in the drainage area. Steel Deck can be warped to conform. No additional deck plates are required—no cutting, fitting or bending necessary.



### SUMP RECESSES and SUMPS

Mahon Roof Sump Recesses for use with Mahon Steel Deck can be furnished to fit any roof pitch. Mahon Cast Iron Sumps can also be furnished for 4", 5", and 6" conductors.

**T H E   R .   C .   M A H O N   C O M P A N Y**

Detroit 34, Michigan • Chicago 4, Illinois • Representatives in all Principal Cities  
Manufacturers of Steel Deck for Roofs, Partitions, and Permanent Concrete Floor Forms; Insulated Metal Walls of Aluminum, Stainless or Galvanized Steel; Insulated Metal Wall Panels; Rolling Steel Doors, Grilles, and Underwriters' Labeled Rolling Steel Doors and Shutters.

# MAHON



# DEPARTMENTAL CORRESPONDENCE

SUBJECT REMOVAL AND STORAGE OF DEFENSE MACHINERY

To Director of Purchases  
FROM Plant Engineering Dept.

Our plant requires outside help to remove, process, transport and store 2100 machine tools. This job must be done to government specifications as tools are defense machinery subject to being reactivated quickly. Advise name and address of qualified contractors.

*W. M. M. M.*  
Vice President  
Plant Engineering Dept.

*Call Commercial Contracting  
they're doing this kind of  
work now for a number  
of large corporations.*



COMMERCIAL CONTRACTING CORPORATION  
General Contractors  
12160 CLOVERDALE, DETROIT 4, MICHIGAN

A. D. BEVERIDGE  
PRESIDENT

## FOR COMPLETE INFORMATION WRITE:

COMMERCIAL CONTRACTING CORPORATION DEPT. M-2  
12160 CLOVERDALE • DETROIT 4, MICHIGAN

Please send information on Removal and Storage of Machinery.

NAME \_\_\_\_\_

ADDRESS \_\_\_\_\_

COMPANY \_\_\_\_\_

COMMERCIAL CONTRACTING CORPORATION • General Contractors  
12160 CLOVERDALE, DETROIT 4, MICHIGAN • TEXAS 4-7400