

The Octagon
1741 New York Ave.
Washington, D.C.

MONTHLY BULLETIN



MICHIGAN SOCIETY OF ARCHITECTS

A State Organization of The American Institute of Architects

OFFICERS

LEO M. BAUER, President
RALPH W. HAMMETT, 1st V.-President
ADRIAN N. LANGIUS, 2nd V.-President
JAMES A. SPENCE, 3rd V.-President
PETER VANDER LAAN, Secretary
JOHN O. BLAIR, Treasurer
TALMAGE C. HUGHES, Executive Sec.

TALMAGE C. HUGHES, F.A.I.A., Editor
THEODORE G. SEEMEYER, JR., Adv. Dir.

120 Madison Avenue, Detroit 26
WOodward 5-3680

DIRECTORS

ALDEN B. DOW
SOL KING
CHARLES B. MCGREW
CARL J. RUDINE
LINN C. SMITH
ARTHUR J. ZIMMERMANN

Entered as second class matter January 15, 1946 at Postoffice at Detroit, Mich., under Act of March 3, 1879. Published Monthly
Subscription price \$3 per year (Members \$2). 30c per copy (Special Numbers \$1).

Volume 25

DETROIT, MICHIGAN, SEPTEMBER, 1951

Number 9

GRACIOUS LIVING IN GROSSE POINTE



J. IVAN DISE, A.I.A., ARCHITECT, DETROIT, MICHIGAN



An Established Dealer

Carrying a Complete Line of All

Masonry and Plastering Materials

Distributors of Concrete Masonry Reinforcing

HORN FUEL & SUPPLY CO.

9133 Hubbell Ave., Detroit 28

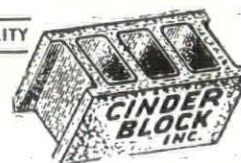
11841 Kercheval Ave., Detroit 14

VERmont 8-2200

VALley 2-4450

**MANUFACTURERS OF
CINDER CONCRETE MASONRY UNITS
SINCE 1923**

CONTROLLED QUALITY



STEAM CURED

9143 HUBBELL AVE.

DETROIT 28

VERmont 8-3200

We begin our second century of service



One hundred years ago the Detroit Gas Light Company made its first few hundred feet of gas, sending it through small mains to a few scattered homes in which the newly developed gas lamps of that day were installed. Three days later the first gas lamps were lighted in the streets of Detroit.

From that beginning our Company has grown into the great distribution system which today

serves more than 715,000 customers living in 69 cities, villages and communities in Michigan.

We enter our second century with long range plans to keep pace with the growth of the communities served. We aim to maintain the highest standards of service, with a deep sense of our responsibility and our obligation to contribute in every way we can to the public good.

MICHIGAN CONSOLIDATED GAS COMPANY

LATH AND PLASTER

— VERSUS —

DRY WALL and BARE BLOCKS

Why Architects should prescribe Lath and Plaster for partitions and at least plaster for inside covering over blocks.

Schools, factories, public buildings, and the like, need the fire-proof monolithic, sanitary, washable surface of plaster, both for partitions, as well as for a covering over rough block.

What kind of an impression does a rough block wall give to school children? Surely it doesn't enhance their learning. It cannot very well increase their desire to attend school or to learn. Does it become an object of dislike, discontent, to have to look at a discordant wall or ceiling? The same is true of grown-up human beings at work, or at play.

On the question of imitation wood paneling, etc., how many women like to keep the same surroundings year in and year out? Do they not get tired of only one pattern for years and years? Even natural wood coloring of so-called dry-wall partitions may become a pall on the mind. Lath and plaster gives so many bright-colored changes, that it will continue to be the favorite wall covering for all purposes.

There is no substitute for Lath and Plaster.

Plastering Industry Joint Conference Board, Inc.

UN. 4-1897

3436 Fenkell Ave.

UN. 4-6257

Detroit 21, Michigan

MEIER CUT STONE Co.

FINE BUILDING STONES FOR FINE BUILDING PROJECTS

SERVICE
SINCE
1863

MAIN OFFICE
9664 French Road
at Gratiot

Detroit 13, Mich.
Walnut 1-3343

Yard No. 2, 6615 French Rd.

Fabricators & Erectors of Structural Steel for Over Twenty-Five Years

STERLING
STRUCTURAL
STEEL CO.

Structural and Miscellaneous Iron Work

VE. 8-0230

12700 LYNDON
AT MEYERS ROAD
DETROIT 27, MICH.

NEON *and* METAL LETTERS
Lona SIGN CO.
6209 HAMILTON AVE.
DETROIT 2, MICH.
PORCELAIN • STAINLESS • ALUMINUM



**Maurice V. Rogers
Company**

GENERAL
CONSTRUCTION

COMMERCIAL BUILDING
CUSTOM RESIDENTIAL

UNiversity 3-3171
15849 WYOMING AVE.
DETROIT 21, MICHIGAN



STEVENS HEATING & VENTILATING, INC.
PROMPT SERVICE ON COMMERCIAL AND INDUSTRIAL HEATING

ALL LEADING MAKES OF BOILERS, FURNACES, GAS & OIL BURNING EQUIPMENT
FOR AUTOMATIC HEATING

TRinity 5-7625

Lincoln 3-2752

JOSEPH A. KRAUSMANN CO.

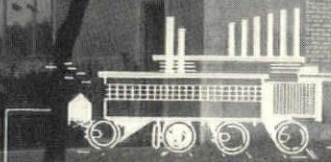
GENERAL CONTRACTORS

4612 WOODWARD AVENUE
DETROIT 1, MICHIGAN
PHONE: TEMPLE 1-7250

all-purpose
chem brick.

THE PRACTICAL BRICK FOR ALL TYPES OF CONSTRUCTION

NORTH
ELEVATION OF
NEW DETROIT
HISTORICAL MUSEUM
WOODWARD AT KIRBY



DETROIT BRICK & BLOCK CO.

VA. 2-4879 • FOOT OF ST. JEAN

ANNOUNCING OUR NEW LOCATION!



HARRY T. WUNDERLICH

CARPENTER CONTRACTOR

12045 Twelfth Street

Detroit 6, Michigan

TO. 8-4575

Entire CARPENTRY and MILLWORK on the
D. J. Healy School

1921 — THIRTY YEARS OF FINE CARPENTRY — 1951

H. H. DICKINSON CO.



Complete
Builders'
Supplies



OFFICE:

5785 Hamilton Avenue

WAREHOUSE:

9940 Roselawn Avenue

PHONE:

TRinity 5-4950

POST OFFICE BOX:

218 Detroit 2, Michigan

WALTER H. MAST, Inc.

BUILDERS

OF THE

MOTSCHALL RESIDENCE

Grosse Pointe Shores

Michigan

20039 MACK AVENUE

Grosse Pointe Woods

Detroit 30, Michigan

"HOUSES THAT ARE HOMES"

MURRAY W. SALES & CO.

WHOLESALE

PLUMBING AND HEATING SUPPLIES

801 W. Baltimore Avenue,

Detroit 2, Michigan,

TRinity 5-4200

FLINT

WYANDOTTE

PONTIAC

For over half a century Detroit's quality roofer

Robert Hutton & Co., Inc.

ROOFING AND SHEET METAL CONTRACTORS

622 FORT ST. E. • DETROIT 26 • WOODWARD 2-1073

JOHNS-MANVILLE PRODUCTS

MONTHLY BULLETIN

MICHIGAN SOCIETY OF ARCHITECTS

120 Madison Avenue Detroit 26, Michigan
(Formerly Weekly Bulletin)

Owned by the Michigan Society of Architects, a Michigan non-profit corporation. Founded, edited and published by Talmage C. Hughes, F.A.I.A., Executive Secretary of the Michigan Society of Architects and of the Detroit Chapter of the American Institute of Architects, under the direction of the Society's Administrative Committee—Alden B. Dow, Chairman, James A. Spence, Arthur J. Zimmerman.

Other Society Committees:

Education and Research—Ralph W. Hammett, Chairman; John O. Blair, Alden B. Dow, Sol King.

Public and Professional Relations—Charles B. McGrew, Chairman; Adrian N. Langius, Linn C. Smith, Peter Vander Laan.

1951 Midsummer Conference—Grand Hotel, Mackinac Island, August 2-5, 1951—Carl J. Rudine, Chairman.

38th Annual Convention—Hotel Statler, Detroit, March 5-8, 1952—Linn C. Smith, Chairman.

APELSCOR—Charles B. McGrew, Linn C. Smith, Alternates; Carl B. Marr, John O. Blair.

Monthly Bulletin is also the official publication of the Detroit Chapter of The American Institute of Architects: Eero Saarinen, President; Amedeo Leone, Vice-President; Eugene T. Cleland, Secretary; Paul B. Brown, Treasurer; Thomas H. Jewlett, Suren Pilafian, L. Robert Blakeslee, David H. Williams, Jr., Directors; Talmage C. Hughes, Executive Secretary.

Official Publication—SAGINAW VALLEY CHAPTER, A.I.A.: James A. Spence, President; Paul A. Rysselbout, Vice-President; Carl G. Schulwitz, Secretary; Ralph W. Knuth, Treasurer; Alden B. Dow, Director; Willard E. Fraser, Correspondent.

—WESTERN MICHIGAN CHAPTER, A.I.A.: Elmer J. Manson, President; James K. Haveman, Vice-President; Charles A. Bryon, Secretary-Treasurer; Christian Steketee, Director; Charles V. Opdyke, Correspondent.

Theodore G. Seemeyer, Jr., Advertising Director, 120 Madison Avenue, Detroit 26, Michigan. Telephone WOodward 5-3680.

Entered as second-class matter Jan. 15, 1946 at the Post Office at Detroit, Mich., under Act of March 3 1879. Published monthly. Subscription price \$3.00 per year (members \$2). 30c per copy (Special numbers \$1).

This Month

"Organizing to Build" is the title of a booklet just published by the Michigan Society of Architects through its committee on public and professional relations, of which Charles B. McGrew, F.A.I.A. is chairman. Other members working with McGrew for the past year are Adrian N. Langius, of Lansing; Peter Vander Laan, of Kalamazoo, and Linn C. Smith, of Detroit.

In addition to a schedule of recommended minimum charges, approved by the three chapters of the A.I.A. in Michigan, the 24-page illustrated booklet outlines the major steps in a typical construction job and the responsibilities of each major participant in a brief and simple way. It is thus intended to aid those who may not fully understand the duties of the owner, architect and contractor and their relations to one another on the project which they as a team are to build. It is also expected to assist in creating smooth-working organizations capable of doing their jobs with the minimum of confusion, trouble and expense.

Chapter titles of the brochure include

A Grand Conference at The Grand Hotel

Elsewhere in this issue you are informed of various phases of the Michigan Society of Architects Eighth Annual Midsummer Conference at The Grand Hotel on Mackinac Island, August 2-5, 1951.

For instance: There were 199 present. Don't know what happened to the other one — probably went for a bicycle ride.

At any rate, all in attendance were not staying at the Grand Hotel — some were on their yachts. And we couldn't blame them much, for the Grand Hotel is expensive — once you break a quarter it doesn't last long.

The phenomenal performance of Gus Langius, the Old Faithful — so designated because he erupts but can always be depended upon to subside at just the right time. Leo Bauer, whose notes were in long-hand — and that's an understatement if there ever was one. The award to him of the 1951 cement trophy by Portland Cement Association — an Illini foot ball player being tackled by a Wolverine, rampant on a field of cement blocks.

Then there is the alleged poetry, which should have mentioned also our honor guests, who have been with us for many years — Ray Kastendieck and Bill Bachman and their charming wives; also with their better halves, Messrs Britch and Moser, presidents of Ohio and Indiana Societies, respectively; George Caleb Wright and Mrs. W. (he is editor of Indiana Society's excellent Bulletin).

Giles Kavanagh, our collector of internal revenue; Ernie Baumgarth, Home Section Editor of The Detroit News; our photographer, Bill Bradley.

When John Thorton revealed the information "the more lime the less leaks," it made us think of Theron Taylor.

Seriously, the conference was by far the best yet, and most of the credit goes to Carl Rudine, who left nothing undone to make it so. There were even more present at the business meetings than were in attendance at annual convention business meetings. This is particularly encouraging. There were many more who wanted to go on the complimentary carriage ride than there were carriages available.

The Building Problem, The Architect's Fee, Selecting An Architect, The Architect's Services, The Architect's Contract, Schedule of Recommended Minimum Fees, Methods of Making Payments, Other Methods of Determining Fees, Partial Services of Architects, and The Contractor and the Construction Contract.

The booklet, which supersedes a single-sheet document which had been in use by the Society since 1928, has been distributed at the Society's Mid-Summer Conference on Mackinac Island, August 2 - 5, mailed to members and to a special list of city, county and State officials, building committees and others who have to do with employing architects.

Copies will also be offered for sale at the office of the Society.

At the board meeting: the Monthly Bulletin was incorporated; a motion to request The Institute to return five dollars of each member's dues to his chapter was defeated, but brought out much information as to what The Institute is doing; heard of the good work being done by the Special Legislative Committee, headed by Charlie McGrew; heard about publicity — newspapers, radio and television — already accomplished, and to come.

President Stanton's address, while informal, was masterful. Mr. Stanton said that in the schools some were allergic to acanthus, while others were nostalgic for it. "Some architects," he said, "say that ruin is universal, that we will have to start all over again."

"On the contrary," he asserted, "We have never faced a crisis that we did not overcome and go on to become stronger."

Senator Blair Moody's address was brilliant, and we were honored to have at the speakers' table Mrs. G. Mennen Williams, wife of the Governor. Governor Williams sent a telegram expressing his regret at being unable to attend.

Hail to the Chief! We have a great President in Leo M. Bauer, and one has only to attend one of these functions to realize that fact.

MICHIGAN'S GOVERNOR G. MENNEN WILLIAMS has appointed Talmage C. Hughes, F.A.I.A. a member of the State Board of Registration for Architects, Professional Engineers and Land Surveyors, to fill the unexpired term of Andrew R. Morison, who died in April.

Other architects on the board are Wells I. Bennett, Dean of the College of Architecture and Design, University of Michigan, and Robert B. Frantz, of Saginaw.

Engineer members are professor Wilfrid C. Polkinghorne, of the College of Mines, at Houghton; William H. Harvie and Clyde R. Paton, of Birmingham, and Harry T. McGaughan of Pontiac.

Professor Polkinghorne is president of the Board.

Leo M. Bauer, president of the Michigan Society of Architects, will be chairman of a seminar on office practice at the A.I.A. Great Lakes regional conference scheduled at the Deshler-Wallich Hotel in Columbus, Ohio, October 17-20.

John N. Richards, of Toledo, Ohio, regional director, announces that the four-day conference of the district's eleven chapters and two state associations will conclude Saturday morning, permitting delegates to attend the Ohio State-Indiana foot ball game that afternoon.

UNIVERSITY 1-8200
14900 LINWOOD

CENTURY BRICK CO.

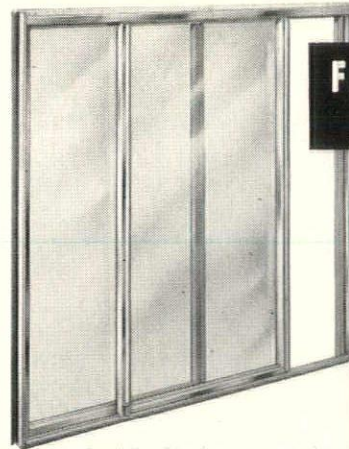
Beauty and Permanence
for

VITRIFIED PIPE
CHEM BRICK

FACE BRICK PC GLASS BLOCK

Better Brick Builds Better Buildings

(Ah ha! We thought you'd turn us right-side up!)



FOR MODERN BUILDINGS

60 standard sizes up to 6' height, 10' width. 2, 3, 4 and 5 panel styles.

ALUMINUM *Horizontal Sliding* WINDOWS

● Ideal for fine homes, apartments, commercial buildings. A quality unit with puttyless glazing. Weather-tight. Locks in closed and 1", 2" and 3" positions. Complete with screens and double glazing. Now Available.

Dormitory—Mich. St. Coll.



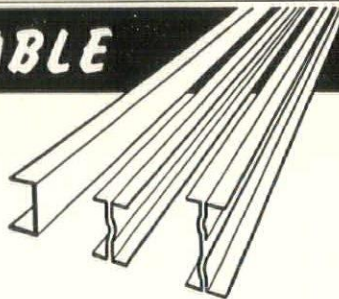
PETERSON WINDOW CORP.

1397 E. 8 MILE RD.

FERNDAL 20, MICH.

NOW AVAILABLE

STRAN STEEL



NAILABLE JOISTS AND LIGHT BEAMS

Lighter in weight than hot-rolled beams of equal depth • Nailable for simple assembly

SUGGESTED USES—

Light trusses for pitched roofs or flat roofs . . . purlins . . . girts . . . interior partition studs . . . tool crib framing . . . shelving supports . . . loading platforms . . . suspended ceiling framing . . . miscellaneous sheds . . . mezzanine floors . . . interior structures within industrial buildings . . . drying kilns . . . ventilating system framing . . . duct work framing and supports.



LaSalle Electric & Mill Supply Co.

STEEL FABRICATING DIVISION

6370 E. Davison, Detroit 12

TW. 1-7060

Stran-Steel framing is a building product of Great Lakes Steel Corporation

FACE BRICK

for

D. J. HEALY SCHOOL
DETROIT

HANLEY COMPANY

Established 1893

LARGEST MANUFACTURERS
OF GLAZED AND FACE BRICK
IN THE EAST

(Capacity 7,000,000 Units Per Mo.)

FACE BRICK
GLAZED BRICK
ACID BRICK
UNGLAZED FACING TILE
GLAZED FACING TILE
QUARRY TILE
FLOOR BRICK

E. F. ZERGA, MGR.
14545 SCHAEFER HWY. DETROIT 27
VE. 7-3200

CONFERENCE BANQUET WAS COLORFUL EVENT

—PRESIDENT BAUER

Your Excellencies — Our First Lady, Our Senator, Mr. President and Secretary of all Architects, Mr. Regional Director, Mr. Past President, Mr. Toastmaster, Fellow Architects, Very Gracious Ladies, Gentlemen, and Dear Friends, All.

On behalf of all Architects of Michigan, may I extend to you a most warm welcome to this, our Eighth Midsummer Conference, and to this Grand Hotel on historic Mackinac Island; to the land of Cadillac, Nicholet, Pere Marquette and those other sturdy pioneers of history who have made this, our land, the greatest nation known to mankind — to this land of story, of lore and of legend as the land of Hiawatha. Indeed, one of the most historic spots in all of North America.

We are met here to take account of ourselves as Architects, to assimilate the grandeur of the geography and its setting, but the more so to enjoy the fellowship of you our guests, and of each other. May we hope that you may say that little has been omitted in our endeavor to make of this an historic event.

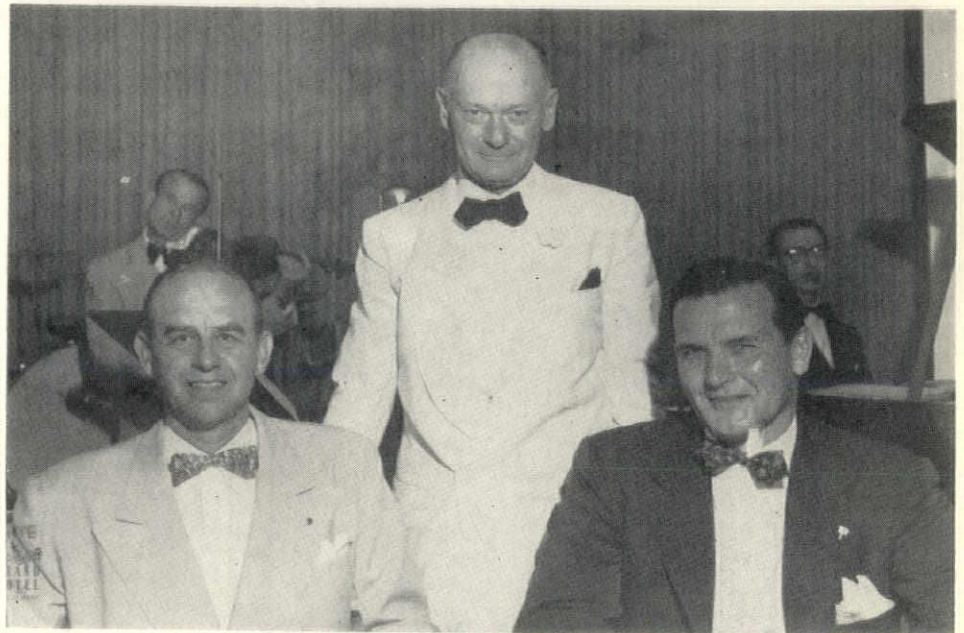
As for myself, this is indeed an event of great moment. Never has it been my lot, nor will it ever be my privilege again, to preside over such distinguished company as is here represented. Let it be said that, for the moment, I am in complete command of this situation, and no one here dare be heard except as I may direct.

To you honored first lady and sir; the one whose husband may direct orders to our National Guard and Our State Constabulary; who may initiate a Kefauver investigation and who may direct collection of taxes levied on incomes and funds which we do not have; or who may preside over all Architects of this nation; for once your humble chronicler commands the spotlight and for the moment you ladies and gentlemen must do his bidding.

In support of that contention let me relate that at the last meeting of our board at Saginaw, our executive secretary submitted to us for de-coding, a wire which had been received from our distinguished speaker wherein was requested an alternate means of transportation to this island, rather than the conventional, occasioned by the Senator's previously arranged speaking engagements on Friday and Sunday of this very week. Unintelligent as we Architects are, it must be assumed that Western Union garbled the contents of the wire, and of course, not the Senator's office.

Next day came a long distance telephone call from the personage of Mr. Robert Ball, the Senators administrative assistant. He advised that in order to keep the Senator's itinerary for a speaking engagement at Battle Creek tomorrow, August 5th, that it would be necessary for the Senator to leave Mackinac Island this very night at 7:00 p.m. (the very start of this meeting) to make the night train for Detroit.

To Mr. Ball I said, "to hell with all this prattle". I am running this show. The senator will be here as was sche-



TOASTMASTER LANGIUS,

PRESIDENT BAUER,

SENATOR MOODY

duled weeks ago. He will not leave our meeting at 7:00 p.m., he will not take the night train for Detroit, and he will cover his speaking engagement at Battle Creek on Sunday, August 5th. The fact is, he is here and the show will go on.

So, to you gentlemen, once the toastmaster sets you on your way, let us hope that you may have mercy on us poor Architects; for we too, just as you, are subject to the criticisms and oppressions of our dear clients, the great American public.

Michigan Architects are blessed with just a very few known to be talented as administrators, and as good story tellers. We have one such in our midst. I would be remiss in my duty were I not to pay the highest of respects to a particular one; known and loved by all in the profession. His accomplishments are so great, and his nomenclature so long, that to do the individual justice it would be necessary to hitch a vehicle to the titles which are his. He first opened his French eyes in a Dutch community on a cold November day in 1903 on the west shore of our state, where he also received his early education. He attended Hope College, and was graduated from our state university, which is known to all Illini as the lair of the crafty Wolverine (I did not say nasty). For years he has served our society in the role as director, second vice president, and was a distinguished president

in 1947, and 1948. He is a member of the American Institute of Architects, and was president of the Grand Rapids Chapter in 1942, and 1943. He is a member of clubs and professional organizations, too numerous to mention. He is in state government, and is director of the building division of the Department of Administration. He has been discussed and cussed in disgust by Architects, builders, his own friends, and by those in government. He rises from each of these sufferings and oppressions a greater public servant, a more lovable character. In fact, he is what one might call a triumphant. He indulges in invectives with the same agility as with expletives.

Author, scholar, clever humorist, a great administrator, a thoroughly swell fellow — Ladies and Gentlemen; the toastmaster of the evening, our own Gus Langius of Lansing and points south.

TOASTMASTER LANGIUS

President Bauer — fellow Architects — associates in the Building Industry and distinguished guests:

This is a special occasion for me. No one knows better than I, the tremendous handicap I am under. I am well aware that in this audience is a past master who is watching every move and weighing every word. I have therefore drilled myself completely in all the fundamentals of toastmastering. The only phase in which I find myself in-

THOMAS BRICK & TILE COMPANY

Established 1896



Telephone
TOWNSEND 8-1354

FACE BRICK — GLAZED BRICK — PAVING BRICK — ACID BRICK
REFRACTORY BRICK & CEMENTS
CUPPLES ALUMINUM WINDOWS — WARE ALUMINUM WINDOWS

14360 LIVERNOIS AVENUE
DETROIT 4, MICHIGAN

GLANZ & KILLIAN CO.

Contractors

PLUMBING — HEATING — VENTILATING

Fire Protection Sprinkler Systems

1761 WEST FOREST AVENUE — DETROIT 8 — TE. 1-7820

When the Shooting Stops

*Let's not drop our guard again.

*Let's remember that the freedom we cherish was built on strength not weakness.

*Let's never again mistake a ceasefire for real peace, and above all, let's not be lulled into dropping our defense program.

Only when our defenses are strong enough to resist those who would destroy us can we turn our entire efforts, strength and materials to the constructive and peaceful building of an even better and stronger America.



HURON PORTLAND CEMENT CO.

General Offices

FORD BUILDING

DETROIT 26, MICH.

Michigan Plants Located at Muskegon, Alpena, Saginaw, Detroit, Wyandotte

ARM-GLAZE

the
E-L-A-S-T-I-C
GLAZING COMPOUND

● Specified by leading Architects and Engineers—preferred by Contractors. Easy to apply. Never gets rock-hard. Won't chip, crack or crumble. Provides LASTING protection. Reduces maintenance. A type for every type of sash. Try Armstrong's Arm-glaze!

● SEE OUR CATALOG IN SWEETS . . . also FREE, upon request, use of Sound Slidefilm, "Application of Glazing Materials."

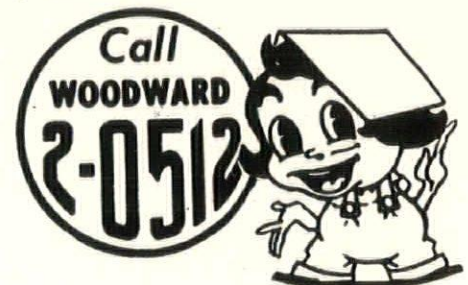
The ARMSTRONG COMPANY
241 S. Post St., DETROIT, MICHIGAN

F. H. MARTIN CONSTRUCTION CO.

955 E. JEFFERSON AVE.
DETROIT 7, MICHIGAN
WOODWARD 1-4890

On Top Since '79
J. D. Candler
ROOFING COMPANY, INC.
551 E. VERNOR HWY. • DETROIT
D. W. CANDLER • DR. C. L. CANDLER

ROOFING & SHEET METAL WORK
INDUSTRIAL & RESIDENTIAL
NEW ROOFS - ASPHALT SHINGLES
COMPLETE ROOFING & SHEET METAL
REPAIRS FOR OVER 72 YEARS



adequate to cope with is the unanticipated build-up from the man on my right.

Tonight I am a debutante. I may not look like the budding type, nevertheless, I am a debutante. I am making my debut as a toastmaster. I want you to know at the outset that I am mindful of Professor Quoney's warning concerning the first law of physics, namely, "the mind can absorb only as much as the seat can endure." I shall do everything in my power to make these ceremonies short and snappy.

If one must make a debut as a toastmaster, it is certainly a privilege to make it here with you, my good friends and associates in the great building industry of Michigan.

By associates in the building industry, I mean not only my fellow Architects, but also the stubborn and unromantic engineer who can specify more ducts, conduits and gadgets that can be housed in the structure they are supposed to serve; I mean the realtor who collects just as much fee as my fellow Architects and gives far less than half the service; I mean the producer and the distributor of materials and goods, who, in addition to having a repertoire of the latest stories (most of which you couldn't use at this banquet), have big expense accounts; and last but not least, the contractor who seems to do so little and still makes so much money.

It is also a privilege to be able to be with so many distinguished guests, I mean, not only those individuals who are seated at this table with me, but you glamorous members of the weaker sex, who always add so much to these occasions.

I feel, however, that many of you are here only because the old man had a guilty conscience, or because he thought you could be covered by the expense account, or, because you just got your ginger up and said:

"Nuts to you — you're not leaving me at home this year."

It was good of President Bauer to say such nice things about me. It gives me confidence, especially because all of it is true — it should be, I just gave it to him a few minutes ago. I don't know why he didn't use the other 3 pages I gave him; I am sorry too, that, being in Indian country, he didn't tell you that my great, great grandfather, old Ya Ya Strawbelly, Chief of the Zuider Zee Tribe, with his Dutch-Indian agility, single-handed, beat the tar out of Paleface Ditchy, the Voyager from Kelley Island, who had robbed the poor Ohio Indians of their pelts and bartered them with John Jacob Astor for a drum of cheap French Brandy. That was long before this Island had its first horse, and without which The Grand Hotel could have no geraniums.

Isn't it uncanny how the lust for drink and the craving for travel stay in the blood. Be that as it may, your notice of me was far better than the one I received in the Conference Issue of the Monthly Bulletin. The best I



Speakers' Table (L. to R.): Alden B. Dow, immediate past president, now director of the Society; John N. Richards, Great Lakes Regional Director, A.I.A.; Glenn Stanton, President, A.I.A.; Nancy Williams, wife of Gov. G. Mennen Williams; President Bauer, Toastmaster Langius, Senator Moody, Clair W. Ditchy, Secretary, A.I.A.; William F. Doyle, Chairman Mackinac Island State Park Commission; Carl J. Rudine, Chairman of the Conference Committee.

could do in that sheet, was, and I quote: "Others to be heard will be Adrian N. Langius, head of the Building Division at Lansing."

Until that time, I had thought that toastmastering commanded far more recognition. It seemed to me that in the past, others always got a big play — at times I felt it was more than they really deserved. This lack of recognition has cut me deeply, because I must admit I have always had an almost indecent desire to preside as toastmaster at a banquet and introduce the distinguished guests and after-dinner speakers. As a matter of fact, I don't think there is anything that I so sincerely wished for. My great desire can best be described by the story of a young lady who also wanted something very badly. Her desire was far greater than mine, however, she wanted a mink coat. This poor working girl wanted that mink coat so badly it was almost an obsession with her. In fact it was said she was willing to do most anything for it. Well — to make a long story short — she finally got her coat — but, why go on? I see you know the rest. So it is with many toastmasters — its difficult to button them up.

In addition to my purely personal desire to be a toastmaster, I believe there are other perfectly valid reasons for dispensing with the same old blabber blabber we have heard year-in and year-out. Much as I respect that faithful gentleman, I am sure a change is welcome. While I recognize he is a fine old patriarch, a master of the metaphor, and a strong, intelligent and handsome squire — but so what — so was Francis X. Bushman.

What we need is some new blood — irrespective of the type — even if it has to be Type O rh negative — Just so its NEW and YOUNG. There were times in

the past when I would have settled for someone with anemia.

In order to keep the records straight, I want you to know that Roger Allen is my favorite toastmaster — my favorite Architect — and one of my oldest and best friends. Of course, I classify Mrs. Allen somewhat differently. She is included with the younger and more glamorous group.

Few individuals realize the effort Roger expends year after year to make his part of our Annual Building Industry Banquet the success it always is when he presides. Toastmastering is a trying and difficult job, even at best. Of course, it has its rewards at times in other ways. Only yesterday, when I was visiting with Roger on this subject, he told me that recently he had been asked to be the toastmaster at Michigan State College where the Michigan Association of Veterinary Physicians were holding a conference. The principal speaker's address concerned "The treatment of a cow in labor." Imagine! Now he knows how to deliver a cow — for years, he has only known how to deliver the bull.

I am convinced, after all the effort I have put forth in preparing to be your toastmaster for this evening's banquet, that no one will ever be able to substitute for the "Old Sage." I trust you will believe me when I say that I accepted the job only because I felt that for once the Old Maestro should attend a conference without a duty or a care.

Just take a look at him over there — smoking his 50c cigar and cavorting with the beautiful women.

We have with us tonight several distinguished guests, all of whom will be introduced, and it should go without saying, only one of whom I promise you, will make a speech.

Our first distinguished guest is the

Thermopane

GLASS BY CADILLAC

2570 HART, DETROIT 14
VA 1-7200

47 STANDARD SIZES
IN STOCK!

CHICAGO • CLEVELAND • ROCKFORD

**FASTER-EASIER
GLASS SETTING**
in all
types of metal sash
Ideal for aluminum



PLASTI-GLAZE
TYPE "C" GLAZING COMPOUND

(Dark Grey or Aluminum Grey)

See our 1951 Sweet's File Catalog $\frac{7c}{PI}$



"ONE WIPE" APPLICATION cuts glazing time.
Ready to use. No mixing or thinning required.



FIRM, ELASTIC BOND that sets quickly but
always stays semi-plastic to withstand vibration
and maintain a constant seal.



FOUR FACTORIES TO SERVE YOU . . . Detroit,
Chicago, Jersey City, and New Orleans.

**PLASTIC
PRODUCTS
COMPANY**

General Office and Laboratory
6451 GEORGIA AVE.
DETROIT 11, MICH.

ATLANTIC METAL PRODUCTS, INC.
• Hollow Metal Doors & Frames
• Kalamein & Tincad Doors

KANE MFG. CO.
• Light Proof Shades

VENTILOUVRE CO.
• Louvres

ENGINEERING • MATERIAL • INSTALLATION

N. W. Hamill Co.

GENERAL LEAD CONSTRUCTION CO.
X-Ray Protection • Engineering
Fabrication • Installation

UNIVERSAL WINDOW CO.
Donovan Awning Type Windows
THE KAWNEER COMPANY
Institutional Entrances
Aluminum Flush Doors

Caulking • Tuck-Pointing • Weatherstrips
407 EAST FORT STREET • DETROIT 26 • WOODWARD 1-0110

Radiant Heating in
Motschall Residence

By

GUY E. MURPHY COMPANY

Plumbing and Heating Contractors

SPECIALISTS IN RADIANT HEATING
For Residential, Commercial and Industrial Work

1439 FORT ST., WYANDOTTE, MICHIGAN
Wyandotte 2095 - 6553 and VI. 3-7861

Aluminum & Architectural Metals Co.

Misc. Iron and Ornamental Metal Work

Aluminum, Bronze and Stainless Steel

Steel Stairs

1974 FRANKLIN STREET, DETROIT 7, MICH.

LOrain 7-6880

Turner-Brooks, Inc.

FLOOR COVERING AND ACOUSTICAL CONTRACTORS

TOwnsend 8-2470

9910-30 DEXTER BOULEVARD

Detroit 6, Mich.

Chairman of our Annual Mid-Summer Conference. I am confident it is principally through his efforts that it has been such a success. He is a member of the Western Michigan Chapter of the American Institute of Architects and has always been active in its affairs. He is Carl J. Rudine of Grand Rapids.

The operation of the legislative branch of Michigan's Government, like our national government, can generally give better consideration to some particular piece of legislation if those interested in such legislation are represented at the hearings before the various committees by specially trained men, who are not only familiar with the affairs of their client, but also the procedures of government itself. These specially trained individuals represent their particular interests much the same as a lawyer represents his client in a court of law. They are called Legislative Consultants. Many of them have devoted their lives to this particular work and command the respect and confidence of our most diligent law-makers. At this point, I want to be sure to interject that Legislative Consultants are like apples or any other product — there are good Legislative Consultants as well as bad Legislative Consultants.

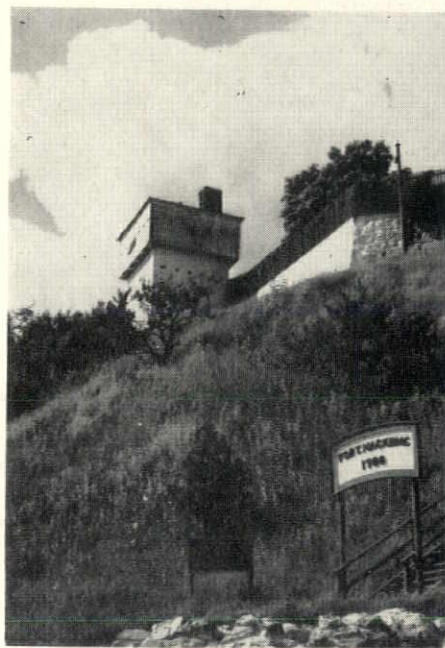
One of our distinguished guests tonight is considered by many to be the best Legislative Consultant in the Capitol City of Lansing. Many leaders of both parties have tried to outmaneuver him. It has been extremely interesting, during my 22 years in the Government of this State, to watch him in operation. I consider him a personal friend. He is here, not because of his achievements in the Capitol City, even though his services during the last session of the Legislature could have made our case before the Legislature somewhat simpler, but because he is Chairman of the Mackinac Island State Park Commission. That Commission is the guardian of this beautiful Island for the people of this State. He is an Irishman — and if an Irishman could be prejudiced (and Heaven knows that he can be — and Heaven knows this one is), I must admit that he is extremely prejudiced in all matters concerning this heritage. He jealously guards with genuine and sincere effort any action which might destroy this historic shrine.

This Island is in good hands and I doubt whether the French, the English, the Democrats or the Republicans can ever take it away from this stubborn and determined Irishman — Mr. W. F. Doyle, Chairman of the Mackinac Island State Park Commission.

I have made no notes concerning the next guest — principally because he is the one individual in the profession in Michigan about whom anything and everything good you might want to say would apply. One of his greatest assets is his charming wife and 3 fine daughters. At the present time, he is a perfect example of the "Father of the Bride." He has held every office that the profession in Michigan could offer. He has done more for the profession in Michigan than any other Architect. Two

years ago I started a campaign to make him President of the American Institute of Architects. It is my sincere hope that before he leaves this earth, that honor can be bestowed upon him. He is Clair Ditchy, Secretary of The American Institute of Architects.

Although there is nothing new for an Architect to be up in the air, it is rather unusual for it to last such a long time. Our next guest should be presented with the "Conference Medal of Honor." He left Portland, Oregon, only yesterday to attend this conference. He addressed us this morning and it was gratifying to learn that although he has



been up in the air for such a long time, he still has his feet on the ground.

He is the Chief Representative of the profession in the United States. That means not only Michigan, but also the other states and possessions. It was nice to have such an important guest travel so many miles to be with us. He is A. Glenn Stanton, President of The American Institute of Architects.

The domain of The American Institute of Architects includes 12 districts. Each district is represented by a director. Some people think that these directors are selected because of their physical pulchritude. From all outward appearances, it would seem that our director substantiated such a statement. That is not the case, however, because in addition to his "beauty," he is one of the successful Architects in the State of Ohio, he is one of the very active members of the national Board of Directors — he is the genial John N. Richards of Toledo, Director of the Great Lakes District of The American Institute of Architects.

Several years ago, when Esther Williams came to this Island during the production of the moving picture, "This Time for Keeps," it was necessary for Mr. Woodfill to heat the water before she would enter the pool and perform before the cameras. It should be known that our next guest swam with Voyager

Ditchy in Lake Michigan on its rocky shores on one of the coldest nights of the 1949 conference in his B. V. D's. He is here not because of his athletic accomplishments, but because he is the immediate past president of the Michigan Society of Architects and one of Michigan's outstanding Architects. With out him no Mackinac Island conference would be complete. He is presently a member of the Board of Directors of the Michigan Society. He is Alden B. Dow, Midland.

Recently, I had a chance to read a copy of an article which will be published in the Journal of the American Institute of Architects, "Words and the Architect" by Roger Allen. I was indeed flattered to learn that in it, my esteemed friend told how my personal convictions concerning certain phases of the practice of architecture (all of which I have related from time to time to many of the Architects in this room) were similar to those of the late Albert Kahn, whose success as an architect is regarded with veneration by our entire profession. After an introduction in which Roger describes Mr. Kahn as an architect to whom a million dollars is merely mad money, to be pinned to your underwear, he quotes him as follows:

"Most architects start to draw too soon, when they get a commission. If they would spend more time talking and looking out of the window and thinking, they'd know better what to draw when they start drawing."

He then goes on to quote me:

"A building doesn't start with lines. A building starts with words — hundreds of words, thousands of words. If they are right words, the building will be successful."

The article contains much good reading and common sense about clients and the approach to the problem and ends with a punch that only an Allen script has: "Then, as Mr. Kahn advised, **Look out of the Window** and think. Plate glass, of course, requires more **looking out** of than double-strength."

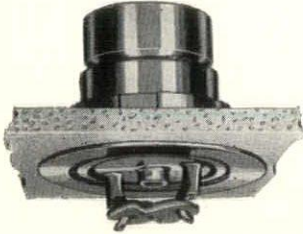
I mention this article not for my personal significance but only because it makes it possible for me to establish a point concerning the presentation of our principal speaker. If it is true, in order to design a successful building, one must do a lot of "**looking out of**," I am certain there is a similar corollary which also allies that success to a lot of "**looking into too**."

About 3 months ago Michigan lost one of its most distinguished and illustrious citizens. It came at a time when our country, and the world, could ill afford to lose the wise counsel and judgement of Arthur H. Vandenburg, Michigan's Senior Senator of the United States. It has been said that the naming of a successor to that great man, was for Governor Williams, one of the most important tasks of his entire public career.

Many matters affecting our entire way of life and even our very existence were and still are pending before Con-

VIKING SPRINKLER COMPANY

Manufacturers and Contractors



UNDERWRITER APPROVED "VIKING" DEVICES
FOR MORE POSITIVE PROTECTION AGAINST
FIRE LOSS

This new Flush Sprinkler is available where appearance is important. It is modern, efficient fire protection for today's offices, display rooms and locations of ultra design.

Let us show you these modern installations

4612 WOODWARD AVE., Detroit 1
TE. 1-9604

315 ALLEN ST., N. W., Grand Rapids 4
Tel. 9-6341

NELSON COMPANY

PLUMBING

HEATING

& AIR CONDITIONING
SUPPLIES

WHOLESALE

MAIN OFFICE

and

DISPLAY ROOM

2604 Fourth Ave.

Detroit 1

WO. 2-4160

Royal Oak - Grosse Pointe - Ann Arbor

JOHN H. FREEMAN COMPANY

Distributors

Builders' Hardware • Contractors' Supplies

3627 CASS AT BRAINARD
DETROIT 1, MICHIGAN
TE MP LE 1-6760

THE TOLEDO PLATE and WINDOW GLASS CO.

ESTABLISHED 1889

Manufacturers & Distributors

Glass Jobbers and
Glazing Contractors

Glass for Every Purpose

Polished Plate — Crystal Sheet
and Window Glass

Rolled, Figured, Wired
and Polished Plate Wired

L.O.F. Thermopane
Insulating Units

Vitrolite Structural Glass
Safety Glass

Metal Storefront Construction

Tee-Pee Asphalt Roofing
Asbestone Asbestos Siding Shingles

Manufacturers of
Mirrors — Beveled Plate
Beau-Fort Medicine Cabinets

The Home of the Famous
BEAU-VUE MIRRORS

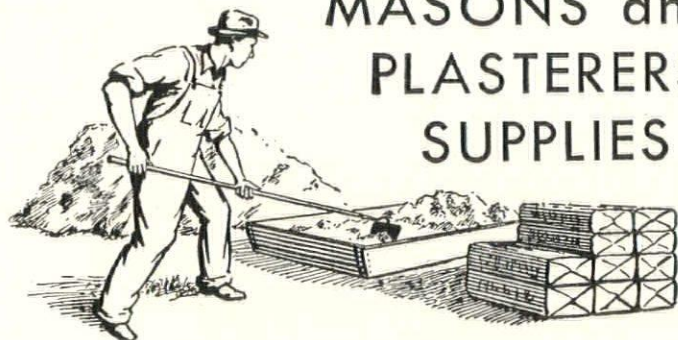
WAREHOUSES

DETROIT — GRAND RAPIDS
CLEVELAND — TOLEDO

JOHN R FUEL and SUPPLY CO.

Complete Line of

MASONS and
PLASTERERS'
SUPPLIES



WASHED SAND—GRAVEL—PEBBLES
AND SEWER CROCKS

WE OPERATE
OUR OWN
GRAVEL PITS

FOrest
6-0200

19225 JOHN R

gress; all of them requiring a good "looking into" by an honest, fearless and sincere individual. I believe few citizens question the Governor's splendid choice for this most important job at this most important time.

Our new senator is certainly qualified by experience and training to fill that position. His energy seems unlimited. He is already diligently "looking into" all of the matters affecting our State, its industries, and its citizens. There is marked evidence of his presence in the national capitol. Already he has been appointed to some of The most important committees in Congress.

His career in Washington since 1933 as correspondent and columnist for the Detroit News and others, his war and foreign assignments in North Africa, Italy, Iran and Britain, and his radio program (since 1946), "Meet your Congress" serve him in good stead.

It is doubtful if another citizen of this State could have grasped such a tremendous job and shown such splendid results within such a short time. It was my special privilege to be one of the few Michigan citizens in the Senate last April when he took his seat on the floor of that body. I saw the first reaction of that great body of men towards this new and young senator. It was also my privilege to lunch with some of his former newspaper colleagues and visit with them in the Senate press room and hear their commendations of his achievements.

There can be no doubt he commands the respect of all of these men and that he is currently a success as Michigan's Junior Senator of the United States.

It is a great pleasure and a personal privilege to present him to you at this time, the Hon. (Arthur Edson) Blair Moody, Michigan's new Senator of the United States.

BULLETIN

We are delighted indeed to know that your meeting was successful, and especially pleased that, with each successive year, the number is "going up." That is a good sign for all of us.

Your nice letter to Mr. Stewart Woodfill was the best medicine he has had since he was taken ill, and brought about the first real smile we have seen from Jim for some time.

Entertaining you and your fine group is really a pleasure for all of us. I think it is a definite advantage for both your organization and the hotel when you return here year after year. We learn to know you and your people and, in my opinion, can do a better job of pleasing you.

M. G. ROTTER
Convention Manager
Grand Hotel

Timber Structures, Inc., of Portland, Oregon, announces the opening of a district office at 1116 Book Building, Detroit. The telephone number is Woodward 3-0235.

Tom Doyle is district manager.

POME ON THE WAY HOME FROM MACKINAC ISLAND

If this is what happens to one who attends an architects' convention — I wonder! It is by a Mr. Anonymus, which means that I know but I am not going to tell you. Any way, all of the clues are contained in the piece itself, so make a kind of game of guessing the "poet's" name—Ed.

'Twas early in August at Mackinac Isle
That the architects met after closing
each file.

They expected this year would be better than fifty,
So they brought their good wives, who were dainty and nifty.

We journeyed by autos or air planes gigantic,
The Straits were quite choppy, like the mighty Atlantic.

President Bauer's board meeting had decorum and wit,
When the boys were out of order Leo wouldn't stand for it.

John Thornton told us how to specify mortar and brick,
Said if the clay wasn't right the mud wouldn't stick.

John Richards gave a talk on A.I.A.'s forty features,

President Stanton explained how to treat clients and creatures.

We didn't hear that speech on N.P.A. documentation,

The new "simplified" form had caused gastric fermentation.

Carl Rudine planned the conference with care architectural,

Tal Hughes' annual report was concise and most cultural.

Gardner Martin's party gave us fun and harmony immense,

Barber shop singing was accompanied by maestro Jim Spence.

The weather was fair and cool, the pool it was colder,

Swimmers sat around crying on each others shoulder.

From the Upper peninsula came Gjellesten and Kaake,

They said "come to God's country to see stream and lake."

The wealthy salesmen who came included Oakley and Mohr,

They forgot joist and brick, dancing on the Terrace Room floor.

At the banquet Pres Leo quoted the poet Longfellow,

Till toastmaster Langius started to cry in his jello.

A.I.A. was also represented by the national secretary,

From Kelly's Island came friend Ditchy with his smile always merry.

Mrs. Williams and Blair Moody were present at the speakers' table,

Our senator's talk showed us that he's both politic and able.

When the toastmaster told us his choice mink coat story,

We were kind enough not to tell him it was both old and hoary.

We sure had some fun at the hotel they call Grand,

So "be with us next year" is our request and command.

199 ATTEND CONFERENCE

Mr. and Mrs. Roger Allen, Mr. and Mrs. George P. Anderson, Mr. and Mrs. H. M. Armstrong,

Mr. and Mrs. William J. Bachman, Victor Basso, L. M. Bauer, Misses Anna M. and Mary J. Bauer, E. A. Baumgarth, Mr. and Mrs. Glenn Beach and two children, Mossie Belco, Mr. and Mrs. L. R. Bennett, Mr. and Mrs. Wells I. Bennett, Mr. and Mrs. John O. Blair, Mr. and Mrs. William E. Bradley, Mr. and Mrs. Carl C. Britsch.

Mr. and Mrs. Noble Carr, Mr. and Mrs. R. A. Curtiss,

Mr. and Mrs. A. M. Davis, Mr. and Mrs. Clair W. Ditchy, Mr. and Mrs. Alden B. Dow and two children,

Mr. and Mrs. Robert B. Frantz, Mr. and Mrs. P. J. Funke,

H. W. Gjellesten,

Mr. and Mrs. V. G. Hahn, C. A. Harlan (party of five), Mr. and Mrs. Max C. Hanisch, Mrs. M. C. Hanisch, Sr., Mr. and Mrs. John J. Hartnett, Mr. and Mrs. Philip J. Haughey, Mr. and Mrs. Wright Hitt, Mr. and Mrs. Walter W. Horn, Don Hougen (party of four), Mr. and Mrs. Talmage C. Hughes, Mr. and Mrs. L. A. Hume,

Mr. and Mrs. T. R. Jahr, Mr. and Mrs. Glenn A. Johnson,

Mr. and Mrs. E. M. Kaake, Mr. and Mrs. Raymond S. Kastendieck, Giles Kavanagh, Mrs. Kay, Mr. and Mrs. F. M. Kirchgessner, Mr. and Mrs. W. E. Kloske, Mr. and Mrs. Alex Kohner,

Mr. and Mrs. Adrian N. Langius, Mr. and Mrs. R. P. Leon, Mr. and Mrs. A. Leone, Mr. and Mrs. F. A. Loebach, Mr. and Mrs. F. Long,

Charles B. McGrew & Charles, Jr., Mr. and Mrs. R. H. McManus, J. G. Martin (party of 10), Mr. and Mrs. John L. Mitchell, Mr. and Mrs. Wayne Mohr, Blair Moody, Mr. and Mrs. James B. Morison, Mr. and Mrs. Lloyd V. Moser, Mr. and Mrs. William Mueschenheim, Mr. and Mrs. Thomas Murphy,

Mr. and Mrs. W. E. Nichols, Mr. and Mrs. Fred Nicholson, Charles Norton,

Mr. and Mrs. Clyde T. Oakley, Mr. and Mrs. C. A. O'Bryon, Mr. and Mrs. W. Ohman, Mr. and Mrs. L. T. Ollesheimer,

Mr. and Mrs. P. F. Rice, Mr. and Mrs. John N. Richards, Mr. and Mrs. Warren L. Rindge, Mr. and Mrs. J. W. Robinson, Mr. and Mrs. Carl Roesch, Mr. and Mrs. B. Rollason, Mr. and Mrs. Clarence Rosa, Mr. and Mrs. Walter J. Rozycki and four children, Mr. and Mrs. Carl J. Rudine,

Mr. and Mrs. Walter Sanders, Mr. and Mrs. C. E. Schley, Mr. and Mrs. Arthur O. A. Schmidt and three children, Mr. and Mrs. G. W. Scott, Ted Seemeyer, Mr. and Mrs. P. R. Sewell, Mr. and Mrs. John Small, Mr. and Mrs. E. M. Smith, Mr. and Mrs. James A. Spence, Glenn Stanton, J. H. Gus Stefens, Mr. and Mrs. F. B. Strale, Mr. Mathias T. Sumner, Mr. and Mrs. Erwin D. Teepe, Mr. and Mrs. John C. Thornton, Mr. and Mrs. H. J. Vincent, Dr. and Mrs. Whittaker, Mr. and Mrs. Geo. Willard, Nancy Williams and guest, Mr. and Mrs. Geo. Caleb Wright, Mr. and Mrs. John M. Zimmerman.

DARIN & ARMSTRONG, INC.

General Contractors

DETROIT 3, MICHIGAN

RENTALS

G. A. ODIEN EQUIPMENT CO.

1935 McGraw Ave.

Detroit 8, Mich.

TYler 4-0100

BACKHOE MACHINES
BULLDOZERS
AIR COMPRESSORS
TRENCHING MACHINES

O'Brien & Williamson Metal Products Company

STEEL

STAIRS

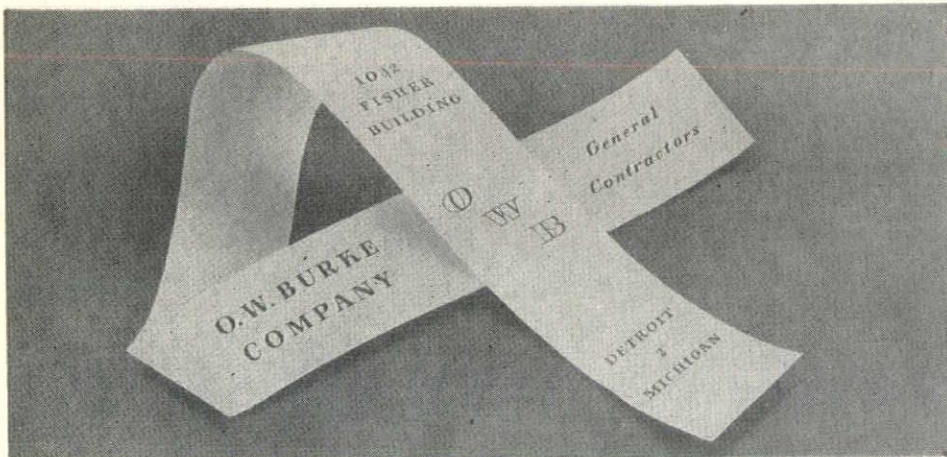
and

MISCELLANEOUS

IRON

Furnished for the
Daniel J. Healy School
Detroit, Michigan

26590 Capitol Avenue
Detroit 23, Michigan
Brightmoor Station, P.O. Box 82
KENwood 1-6400



EASTERN CABINET WORKS

ARCHITECTURAL WOODWORK—CUSTOM BUILT FURNITURE—STAFF DESIGNING AVAILABLE

LORAIN 7-9515

3456 EAST JEFFERSON AVE.

DETROIT 7, MICHIGAN

COLORFUL OHIO
SHALE BRICK

KURTZ Brick Company

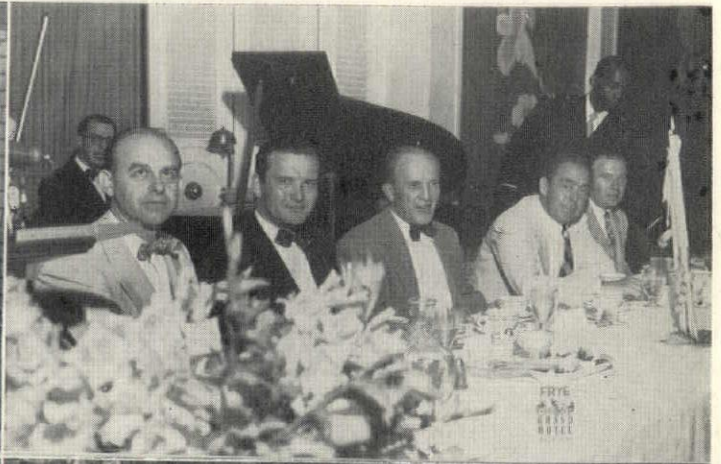
FOR RESIDENTIAL
AND
COMMERCIAL
BUILDING

Our Fleet of Diesel Powered Highway Trains Deliver Your Brick Direct from Our Ohio Kilns to Your Job Site
NO WAITING — NO DELAY — NOT A CHIP IN A CARLOAD

14183 WYOMING, DETROIT 4

WE. 3-2384

SOME OF THE 1951 MSA MIDSUMMER CONFERENCE, GRAND HOTEL, MACKINAC ISLAND



Building?

Include a



"ALL ELECTRIC" KITCHEN

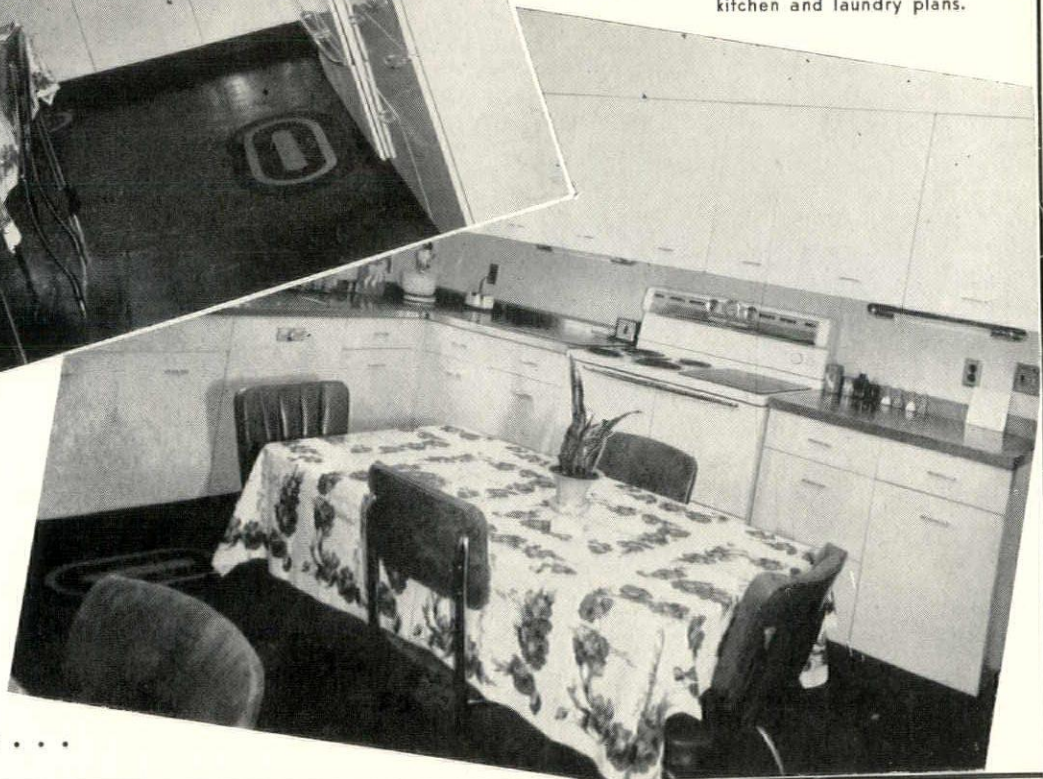
AND

LAUNDRY

WITH

"MATCHED" APPLIANCES

SEE . . . on page 28 the beautiful General Electric Kitchen featured in the A. R. Motschall residence (pictured here) in Grosse Pointe Shores, Michigan. Into this home we have placed a General Electric Refrigerator, Range, Dishwasher, and Disposall — just one of many examples of how we can help you with your kitchen and laundry plans.



Let Us Help
You With Your
Kitchen and
Laundry Plans.

Phone or write . . .

TEETZEL CO. decorators

917 E. Jefferson
DETROIT 7, MICHIGAN
WO. 2-4800

MEETING DETROIT CHAPTER AIA
RACKHAM MEMORIAL BUILDING, DETROIT

WEDNESDAY, SEPT. 19, 1951

Dinner, 6:30; Lecture, 8:00 p.m.

Buckminster Fuller, Chapter Speaker

Subject: "Architectural Initiative in Meeting Resource Strigency"

DETROIT CHAPTER MEETINGS

Eero Saarinen, president of the Detroit Chapter of The American Institute of Architects, has announced the Chapter's schedule of meetings for the 1951-52 season, as follows:

September 19, October 17, November 21, December 14, January 16, February 22, March 21, April 16, and May 16.

All meetings are scheduled at headquarters of The Engineering Society of Detroit in the Rackham Building, 100 Farnsworth Avenue, Detroit. Dinners at 6:30 P.M. are preceded by afternoon board meetings and followed by lectures in the auditorium of the same building. Lectures are free and open to the public.

Suren Pilafian, chairman of the Chapter's program committee, announces that on September 19 the speaker will be Buckminster Fuller, industrial designer, famed for his "Dymaxion" house and other notable contributions to research in the building field.

"Buckminster Fuller is now working on developments which he does not expect to see realized during his lifetime. They are revolutionary in the extreme, and contemplate doing away with practically all utilities," Pilafian said.

"He visions disposing of waste entirely by chemical and mechanical means; using only the elements for heat, light and air conditioning. He believes that new developments in the line of food will revolutionize cooking and practically make the kitchen unnecessary."

Pilafian further announced that an "Award of Merit" certificate will be formally presented to Mr. Louis Rossetti, of Giffels & Vallet, Inc., L. Rossetti, Associate, Engineers and Architects, for their Veterans' Hospital in Fort Wayne, Ind., on which A. M. Strauss, of Fort Wayne, was associate architect. The award was won in the A.I.A. Honor Awards competition at the recent Institute convention in Chicago.

Only two other programs have been definitely settled, according to Pilafian: the annual meeting and election of officers in October and the joint meeting with members of the Chapter's three student affiliates at the University of Michigan, University of Detroit and Lawrence Institute of Technology, in May.

FOR SALE—Approx. 20 pcs. oak, 1/2" x 16 1/2", 12' to 14' long. Ceiling panels, milled around 1875, finished one side only; require sanding only to receive new finish. Excellent condition. P. O. Box 2002, University Station, Ann Arbor, Michigan.

The speaker will bring out the surprise factors developing in technical trends of the building arts, with special reference to recent successful research developments in amplifying performance, while reducing pounds per function of structure, and permitting advancing standards, in the face of progressive restrictions in allocations to the building industry.

The lecture will be illustrated with 150 Kodachrome slides.

It will be free and open to the public. Ladies are invited to both dinner and lecture.

EERO SAARINEN, president of the Detroit Chapter of The American Institute of Architects, will leave for Europe on September 23, for one month. He will visit Italy and France and inspect public squares with the purpose of making use of their design in city planning in this country.

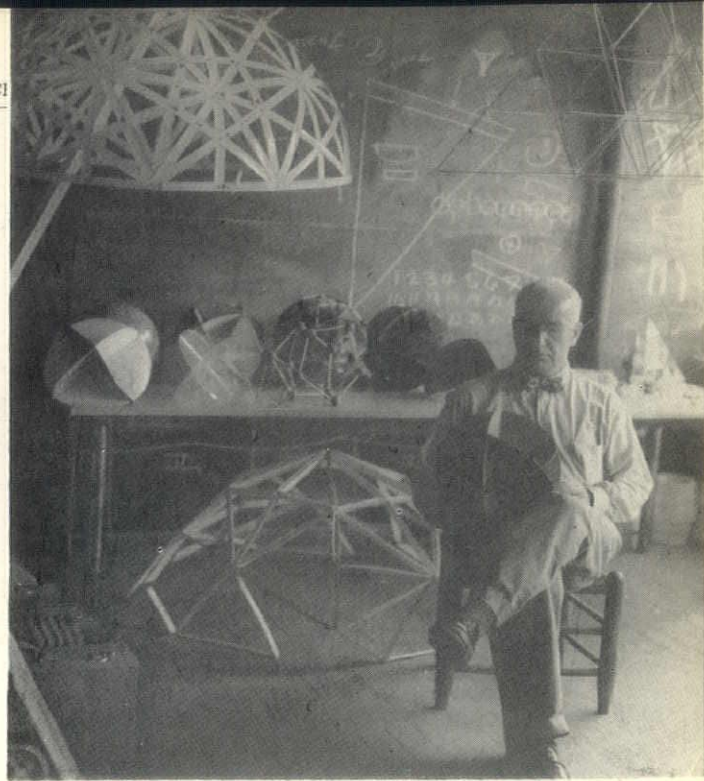
Saarinen is consultant to the Detroit City Plan Commission in its Civic Center development. His memorial arch for the City of St. Louis, which commission he won in nation-wide competition, was published in the current issue of Architectural Record.

Eight Michigan men have been appointed on national committees of The American Institute of Architects, it is announced from Institute headquarters in Washington.

Clair W. Ditchy of Detroit is a member of the committee on By-laws; Alden B. Dow of Midland, Allied Arts; Leo M. Bauer of Detroit, Architect and the Government; Robert B. Frantz of Saginaw, International Relations; Eberle M. Smith of Detroit, School Buildings; Emil Lorch of Ann Arbor, Preservation of Historic Buildings, and George B. Brigham of Ann Arbor, Collaboration with National Association of Home Builders.

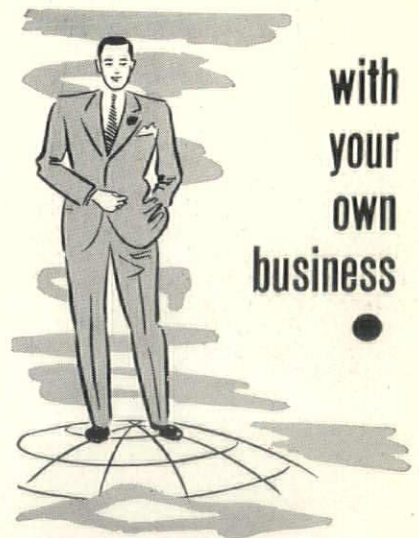
W. C. Randall of Detroit Steel Products Co., of Detroit, was named a member of the Joint Committee of The Institute and Producers Council, representing the Council.

Detroit Chapter of The American Institute of Architects announces the election of two new members: Walter B. Sanders and William Muschenheim. Both are professors at the College of



Picture shows Bucky Fuller working on his skeletal dome framing system, described in an 8-page feature in the current Magazine of Building. — Hazel Frieda Larsen photo.

Architecture and Design at the University of Michigan. Both transferred membership from the New York Chapter, A.I.A.



Success comes naturally to good sales and management men, who adapt the Kaufmann Plan of merchandising aluminum building products. It lets you start as small as you wish and promotes your growth as fast as you can take it.

WRITE FOR DETAILS

KAUFMANN CORP.

17210 GABLE DETROIT 12, MICHIGAN

WESTERN MICHIGAN REPORT

Correspondent Charles V. Opdyke reports that the next meeting of the Western Michigan Chapter will be held in Kalamazoo on September 17, at which Kenneth C. Black will show his three dimensional color pictures taken in Sweden last year.

Program Chairman of the meeting, Randall Wagner, announces that the dinner will be preceded by a social hour. Other details have not been settled but will be given in Architectonics soon.

Attention is directed to the "Building Cost Report Sheet," published in the August issue of the Bulletin, and all members are urged to fill in this form and return it to William A. Stone, 1507 American National Bank Bldg., Kalamazoo 4, Mich., in order that he may complete the tabulation and issue a report to members.

Charles states that he has received some interesting reports on research tests made by the Texas Engineering Experiment Station at College Station, Texas. These reports cover a wide variety of subjects — School Architecture, Insulating, Rammed Earth Construction, Movies for Shop and Class Room, Furniture Manufacturing in Texas, The use of Models for predetermining Natural Lighting and Ventilating, Natural Ventilation of Buildings, and the Measurement of low-air speeds by the use of Titanium Tetrachloride. They are available on request.

Your correspondent has also written a comprehensive report on the meeting of editors at the Chicago convention of The A.I.A., as well as a report of a talk given by Mr. A. H. Eicheimer, of the U.S. Weather Bureau, before the Western Michigan Chapter.

During the last fifty-years this world has been wrought from one of scarcity to one of plenty.

It was primarily the architects and engineers who sought out and made possible this tremendous achievement.

The architects and engineers, however, have been very backward in organizing and demanding for themselves the recognition which their contribution to society deserves.

You have distinguished yourself in the building industry, have now been

honored with membership on the Michigan State Board of Registration for Architects, Professional Engineers and Land Surveyors.

What these professions need more than anything else is public recognition. Certainly they contribute as much as the doctors or lawyers, both of whom have been highly organized for many generations.

In your capable hands, the big job which confronts you, it is hoped, will come closer to fruition.

C. ALLEN HARLAN

BULLETIN

Back in the early 1930's I served for a period of six years as Chairman of our Institute of Architects' Journal Committee, and over that period you were kind enough to exchange copies of your Journal. These are carefully bound and form a part of my office library. Quite recently, my son, who is now a qualified architect, has enjoyed reading these journals.

I was interested to see in the April 1951 issue of the "Architectural Record" where you had celebrated the Silver Anniversary of your bulletin and that you had published an anniversary number. You are to be congratulated on your great service to the Michigan Society.

I wonder if you have a spare copy of this issue. I would welcome the opportunity to add it to our library.

Our own journal has gone through a very checkered history. Early in the last war we had to cease publication due to paper shortage and other difficulties, and for several years after the war the Institute went through a period when it did not seem to have the support to revive the journal. We have, however, over the past couple of years been putting out a small bi-monthly publication along the lines of your A.I.A. Journal, and by ordinary mail I have mailed you a few copies of the journal.

I have also sent you a special issue of the London "Architectural Review" that was devoted to Australia. I feel you will find this of some interest.

Leslie M. Perrott,
Melbourne, Australia

DAVID H. WILLIAMS, Jr., director of the Detroit Chapter of The American Institute of Architects, has received notification of recent action by the Board of the Institute as follows:

"Resolved that the Board advises all chapters and state organizations publishing lists of work executed by members that such lists should be accompanied by a statement that the list is necessarily incomplete, and calling attention to the fact that an architect truly competent in one type of work will be found to be competent in other types he sees fit to engage in, whether or not he has actually completed such work previously."

Williams explained that the resolution was brought about by publication of lists of so-called specialists in the fields of hospitals, schools, churches, etc., which has led, in some cases, to building committees believing that it is necessary for them to engage architects from other states in order to get proper service.

"The truth is," says Williams, "an architect who has had proper training, experience and background is capable of solving any problem that is an architectural one."

C. Howard Crane, A.I.A., was a visitor to Detroit last week, enroute from Miami, Fla., to New York City.

A member of the Detroit Chapter of The American Institute of Architects, Crane formerly practiced in Detroit, still maintains offices here under the direction of Elmer G. Kiehler and Dixon B. Kellogg, at 112 Madison Avenue. The Crane firm is now associated with Detroit architects, O'Dell, Hewlett & Luckenbach on the Music Hall for Detroit's Civic Center.

For the past 16 years Crane has been living and practicing in London, England, with offices also in Birmingham, England, and Honolulu, T. H. He has just completed a large project at Bermuda, and is starting an elaborate hotel in Nassau.

Mr. Crane stopped in Miami for a visit with George J. Haas, A.I.A., formerly of Detroit. George has never lost his interest in and love for Michigan, reports Howard.

WESTERN MICHIGAN CHAPTER members will share in Grand Rapids' \$11,000,000 school building program.

Architectural offices offered assignments are: Louis C. Kingscott & Associates of Kalamazoo, coordinator; J. & G. Daverman Co., Roger Allen & Associates, James K. Haveman, C. A. O'Bryon, and Chris Steketee, all of Grand Rapids, and Warren S. Holmes Co.

At the request of John Reid, commissioner of labor for the State of Michigan, at Lansing, the Michigan Society of Architects has appointed three of its members to the State Safety Council. They are: Warren L. Rindge of Grand Rapids, Donald A. Kimball of Saginaw, and John C. Thornton of Detroit.

GREEN "EZY-RASE" NUCITE CHALKBOARDS

Over 100 Installations in Michigan During the Past 10 Years
Has Proven the Quality of This Material

ALUMINUM FRAMING & CORK BULLETIN BOARDS

DANIEL J. HEALY ELEMENTARY SCHOOL
Detroit, Michigan

PENINSULAR SLATE CO.

Michigan Representative New York Silicate Book Slate Co.

712 Amsterdam Avenue

Office and Warehouse
TR. 5-4301

Detroit 2, Michigan

STIRTON MOSAIC PORTRAIT

Through Louis Palombit, of Detroit, president of the National Terrazzo and Mosaic Association, Malcolm R. Stirton, partner in the firm of Harley, Ellington and Day, Inc., architects and engineers, has received a mosaic panel, representing a portrait of himself, made by the students at the School of Spilembergo, in the Province of Udine, Italy.

The school, which is 475 years old, follows the old tradition of the master craftsman, beginning their students at the age of ten and continuing their apprenticeship for a period of ten years. The type of mosaic used is similar to that of the early Italian examples at Ravenna and St. Marks in Venice.

Purpose of this example is to remind the architects of America of the possibilities of this almost-forgotten art and to help the school in its struggle for survival. The National Terrazzo and Mosaic Association has subsidized the school and is undertaking to encourage it in every way possible. A similar portrait was presented to President Truman as a means of enlisting support and attracting commissions for the school.

Palombit secured a photograph from Stirton, took a few notes as to color characteristics of complexion, hair, eyes, etc., and from this an oil painting was made, from which the mosaic portrait was developed. The photograph of the mosaic does not include the color shades and softly graded tones of the original.

The project took approximately eight months to complete, as the same rough hand-craft instruments were used as they were in earlier times. The cost is low because of the low labor rates in Italy.

The Detroit Institute of Arts has examined this mosaic and declared it an excellent example of mosaic craftsmanship. It was felt, however, that it is not a true mosaic technique in that it simulates a painting or photograph and does not have the true wall flat character of mosaic. This criticism, it is explained is a just one, but inasmuch as the school was attempting to show ability and working from a photograph, it does not detract from the craftsmanship of the work.

The finished mosaic is 11" x 15", which means that there was an enlargement involved in the preparation of the work.

Palombit states that the school is in a position to execute commercial commissions for the American trade at a cost comparable to faience tile work.

Frederick Crowther, architectural renderer announces his new location at 2222 Woodward Avenue, Detroit 1, TE 2-2977.

Crowther has served more than two hundred architects and others in the Detroit area, as delineator, perspective artist and renderer.



STIRTON PHOTO



STIRTON MOSAIC

MET IN SAGINAW

JAMES A. SPENCE, President of the Saginaw Valley Chapter, A.I.A., and Vice-President of the M.S.A., was host to the Society's Board of Directors, at the Spence home, 8 Edgewood Road, in Saginaw, on July 11.

Because of the Mackinac Conference this item was crowded out of the August issue of the Bulletin, but we do want to report that there was a 100% attendance, which speaks well for the Saginaw Valley Chapter and for Jim Spence. Those attending were amply rewarded by genial host James. Jim and Sally have a charming home in a setting that is so delightful — facing on a golf course.

Bob Frantz, who lives next door, dropped in and was welcomed most heartily by President Bauer, as well as by all of the Directors.

Frantz and Spence designed all of the houses in their subdivision, except one — which is to say that they are really good architecture.

EUGENE T. CLELAND, secretary of the Detroit Chapter of The American Institute of Architects, announces that the chapter will soon undertake a project to redesign its printed matter.

The project, which will be in the form of a competition among the chapter's 400 corporate and 100 associate members, will have for its objective, some uniformity of stationery, membership cards, place cards, bulletins, notices of meetings, documents and other pieces, so as to attain simplicity and modern professional character.

With this as a first step, it is expected that statewide action will follow toward including printed matter of the Western Michigan and Saginaw Valley Chapters, and the Michigan Society of Architects. In the Society will be included the Monthly Bulletin, official publication of the organizations, and its cover and format will come under scrutiny.

HARRY M. DENYES ELECTED

Architect Harry M. Denyes has just been elected chairman of Birmingham's City Planning Board. William Brown was elected vice-chairman, and Irene Hanley, secretary.

Other members of the board are Coit Alee, William Burgum, Don Egbert, L. R. Gare, George Green, Wylie Groves and George Marin.

Denyès, who received his architectural education at the University of Michigan and Illinois Institute of Technology, is on the staff of Swanson Associates, architects, of Bloomfield Hills. His home is at 544 Willets, Birmingham.

The new president announces that the City of Birmingham has adopted the Basic Building Code of the Building Officials Conference of America. He further states that his board is seeking the cooperation of architects doing work in Birmingham, in the matter of submitting their preliminary sketches for building projects well in advance of letting construction contracts. This is in accordance with a City ordinance.

"With such cooperation", Denyes said "our board will be able to function more efficiently in checking building plans against the overall plan for the development of Birmingham, thus avoiding costly last-minute changes.

"Two large oil companies recently changed their plans from hard-line commercial type structures to attractive buildings more suitable to the areas in which they are located. Their action indicated that architects' clients are willing to cooperate with the board, realizing that it is an excellent way of building good will in the community.

"In another case, where plans were submitted only a few hours before work was scheduled to begin, approval was given by only a four-to three vote, and the sponsors of the project have been severely criticized, not only by some members of the board, but also by residents of the community."

SPECIALIZED SERVICES
for
ARCHITECTS

**DUNN
BLUE PRINT
CO.**

MAIN OFFICE
5920 SECOND-TR. 5-2125

EAST SIDE WEST SIDE
17110 BRADFORD 18019 JAS. COUZENS
VE. 9-3900 UN. 1-5512

FACE AND GLAZED BRICK
Of Every Kind and for Every Purpose

STRUCTURAL FACING TILE
Ceramic Color Glazes — More than fifty colors and in all sizes.
Clear Glazes - Salt Glazes - Unglazed - Various Colors and Sizes


SPECIAL INDUSTRIAL FACING TILE
Glazed and Unglazed

ANTI-HYDRO — Concrete Waterproofing and Floor Hardened

FREDERIC B. STEVENS INCORPORATED

1800 - 18TH ST. Detroit 16, Mich. T Ashmoo 5-0725

VE. 8-0660



WALTER L. COUSE & Co.

GENERAL BUILDERS
12740 LYNDON AVE., DETROIT 27

R. D. THAYER COMPANY
WATERPROOFING CONTRACTORS AND ENGINEERS

2701 JOY ROAD
DETROIT 6, MICH.
TYler 6-9626


COMPLETE WATERPROOFING SERVICE
For The Preservation of Your Structure

WORKING IN COOPERATION WITH
LEADING WATERPROOFING MANUFACTURERS

842 HALL ST., S. E.
GRAND RAPIDS 7
Phone: G. R. 5-5180

**SHEET METAL
VENTILATING**

AIR CONDITIONING



M. DEN BRAVEN CO.
9080. ALPINE AVENUE
DETROIT 4, MICHIGAN


WE 3-7494-5-6

Koenig Coal & Supply Co.
SINCE 1870

READY - MIXED CONCRETE — FUEL OIL — COAL

Main Office: 1486 Gratiot Avenue, Detroit 7

WO. 1-1584



What The Institute and Michigan Society of Architects Are Doing

A member of the Detroit Chapter, A.I.A. (name on request) writes:

"I would greatly appreciate it, if you or someone qualified would write an article in the Bulletin which would describe in detail what the A.I.A. does, what the M.S.A. does, who gets the money that is paid for dues, etc.

"For the past five years I have been toying with the idea of dropping my A.I.A. membership, as frankly I do not think it does me any good and a few years ago it tried to do me harm.

"A few weeks ago I got around to parting with my fifty bucks (which would have bought me a suit) and about a week ago I received a "dun" for another \$100.00 (two suits) to support something which the "Bulletin" is apparently afraid to talk about. Who decided upon this? To my knowledge there is no meeting of the M.S.A. except at the Statler or Grand Hotel. (They will let me into the Statler with my \$50. suit if it is well pressed, but I have never dared to try crashing the Grand Hotel with it even with a razor edge crease.)

"Perhaps I might feel differently if I knew more about the organization to which I pay tribute at the rate of a buck a week. It seems to me there may be others who would like to read a frank complete discussion of this whole setup. Among other things which might be explained is how can one belong to the M.S.A. and not the A.I.A., and if possible for how much, and why?

"I know this letter is a bit disconnected and perhaps somewhat satirical, but I feel as if I had been sold something instead of buying it."

SAYS CLAIR DITCHY:

The Institute is composed of over 8000 architects in the forty-eight states and territorial possessions of the United States, is an incorporated body under the laws of the State of New York.

Its activities are dictated by and are subject to the will of its members through the medium of an annual convention where every member is represented by a duly appointed delegate. The convention elects a Board of Directors with officers to carry out the mandates of the membership.

To properly discharge these duties, a staff and headquarters is maintained in Washington, D.C. In 1948, in order to efficiently perform the multifarious and rapidly increasing services required of the staff, the headquarters was divided into three general departments.

- (1) Administrative
- (2) Public Relations
- (3) Education and Research

These three departments, under the direction of the Board of Directors, carry on Institute activities.

The Board, acting in a purely administrative capacity appoints committees from its membership and assigns to each committee certain specific duties. The number of committees varies, for

in addition to permanent or standing committees, there are many special committees appointed for special projects which are discharged when their missions are completed. At the present time, there are approximately forty committees whose names indicate the nature of their work. I append a partial list to indicate the scope of their activities:

Committees on Public Relations, National Capitol, Allied Arts, Chapter Affairs, Architect and the Government, Membership, National Defense, International Relations Fees, Urban Design and Housing, Architectural Competitions Accounting Methods and Office Practice, Collaboration with N.A.H.B., Awards and Scholarships, Education, Hospitalization and Public Health, Expansion of Research Facilities, Architecture and Nuclear Science, School Buildings, Building Codes, Taxation, Publications, National Defense Contract Documents, Architectural Competitions, The Institute and Producers' Council, A.I.A. and A.G.C., Honor Awards, Convention Exhibits, Judiciary, etc. etc.

If there is any problem concerning a member's practice, he may write to The Institute and receive aid or information concerning it. The various documents which The Institute has prepared and perfected over the years are invaluable in establishing fool-proof office procedure, use of the new accounting system will put the architects office on a sound financial and business basis, and, at the present time, The Institute is developing a group insurance service which will be available to the smallest as well as the largest offices.

There is no phase of architectural practice, which The Institute neglects. It is ready to assist in all of them and is constantly studying ways and means to make The Institute of increasing value to its members, and thus, as stated in the by-laws (Chapter I, Article 1. Section 2), to make the profession of ever-increasing service to society.

The Institute disseminates its information as widely and freely as possible through "The Journal", "Bulletins" and the "Memos." It assists in the holding of regional conferences, where current techniques and architectural developments are discussed by leaders in these fields. It sponsors exhibits.

To do all this takes money. A recent pamphlet "Report of the 83rd Convention" is available to every member and gives a much more comprehensive outline of Institute activities than I do here. It shows the source of Institute income, the amount of it and how it is spent. I recommend a careful reading of it to any member who is at all vague on the subject of this wonderful organization to which he is privileged to belong.

It is my firm belief that were it not for The American Institute of Architects, the profession of architecture would not exist as it does today. Were

it not for The Institute, the average architect would not be able to practise with the freedom, facility and protection that he does, and his status as a dignified, respected and responsible member of society would be seriously impaired, if indeed it even existed.

STATE AND LOCAL

The Institute was founded in 1857, the Detroit Chapter in 1887, the Michigan Society of Architects in 1914, the Western Michigan Chapter in 1923 and the Saginaw Valley Chapter in 1945.

All have worked for the common purpose of promoting the interests of the profession and to make it of ever-increasing service to society.

We believe that Mr. Ditchy has fully justified the payment of dues to the national body. To take the Detroit Chapter as an example (dues in each are ten dollars). First of all, three dollars of each member's dues go to the Michigan Society of Architects, leaving seven dollars for the Chapter. The largest item in the budget is subsidizing dinners of members - 75c each. If a member attended all nine of the meetings during a season, this would amount to \$6.75.

Speakers are engaged for at least one-half of the meetings and are generally paid an honorarium and expenses. There are naturally other operational expenses — the Chapter pays its executive secretary \$500 per year for his services, which represents what it is able to pay. We believe that the other chapters operate in a similar manner.

As for the Michigan Society of Architects, I am sure that no architect ever spent three dollars to better advantage. For twenty-five years the Bulletin has endeavored to inform members of the beneficial services the Society renders to its members and to the public. It is too bad that more members cannot serve on the board of the Society, and know what an amount of good work is being done in their interest.

Recently the Society published a booklet, "Organizing to Build", which supersedes a single-sheet document that had been in use since 1928. I happen to know that this former document had stood up in court and otherwise, and was most valuable in many ways. The booklet will be even more so. It has been mailed to all members, plus a special mailing to what we call our master list — city, county, state, federal officials, school boards, and many others who have to do with the selection of architects, numbering nearly 5000. This is only one item. There are many others.

Can you imagine anything like this being done without architectural organization?

"It is well for a man to respect his own vocation whatever it is, and to think himself bound to uphold it, and claim for it the respect it deserves"— Charles Dickens.

SUPERIOR ROOF DECKS
OF
POURED & PRE-CAST GYPSUM

STRONG — DURABLE — FIREPROOF

Materials Immediately Available for Your Needs

GYPSUM CONSTRUCTORS, INC.

5905 Middlebelt Road

MIDDLEBELT 5513

Garden City, Mich.

A. Bruce & Sons, Inc.

EXCAVATING CONTRACTORS

for

DANIEL J. HEALY ELEMENTARY SCHOOL

12303 Cloverdale Ave., Detroit 4

Webster 3-4218

THE C. J. PAGE TILE CO.

TILE WORK

in

D. J. HEALY SCHOOL

2715 CHENE STREET, DETROIT 7

LOrain 7-0110

UNiversity 4-8167

PAINTING

on

DANIEL J. HEALY SCHOOL

by

NICK KRUGER & SON

Established 1919

PAINTING and DECORATING CONTRACTORS

8035 W. 8 MILE RD., DETROIT 21

Sun Electrical Contracting Co.

ELECTRICAL CONTRACTORS

8409 FENKELL AVENUE

Detroit 21, Michigan

Diamond 1-0010

For successful heating...

ALWAYS SPECIFY

BRYANT HEATER DETROIT SALES BRANCH
617 Central Detroit Warehouse • Phone, Woodward 3-0182

bryant
AUTOMATIC HEATING

Your single source of supply for everything in gas heating equipment!



SAGINAW VALLEY CHAPTER

This chapter takes a rest during the summer although the adjective "well-earned" may not be justified. The reason for not having meetings in the summer has no relation to climate as the Arctic Circle, like the 38th parallel, shows a strong tendency to move south this year.

The only member your correspondent has seen all summer has been Mr. Beckbissinger, who was met by accident on the street in Saginaw. "Becky," as he likes to be called, is the senior architect in this area if not in the entire out state. He is a discursive talker and in the half hour we talked covered the early history of the Michigan Society and his experiences in Chicago in his youth. One point he brought out was that the so-called Chicago School, around the late eighties is not sufficiently credited with the pioneering they did in foundation design.

"They had no precedent to go on," he said, "but by keeping track of every pound that went into a building they found they could safely go ten stories high. Then when they thought this was a safe standard, as the city blocks began to be built up to this height they found the whole square block was overloaded and the clay moved up and out into the street." He is much interested now in pre-stressed concrete. "I have lived through it all" he said. "I can remember when it was said that a steel-frame building was impractical because the steel would rust out."

A telephone spot-check of several offices shows that the recent restrictions on building are not clearly understood. The tendency, as this writer observes it, is somewhat in keeping with the old drafting room joke in the days of cloth drawings: "ink it in and see how it looks." Now it seems to be "pour the concrete, maybe we can finish it."

WILLARD E. FRASER

LOUIS C. KINGSCOTT & ASSOCIATES have donated their architectural services on the Bear Lake elementary school which has just been completed.

The gift, valued at more than \$4,000, is a memorial to Louis Kingscott's bro-

ther Alonzo J. "Hap" Kingscott, who passed away February 3, 1948. Both Louis and Alonzo, sons of Mr. and Mrs. Ralph Kingscott, were pupils at the Bear Lake school.

Alonzo was one of the pioneers in developing the modern trend in school architecture and was called in by the State Department of Public Instruction as a consultant to work out the architectural principles for the State's school building program.

The firm of Louis C. Kingscott & Associates was organized in 1932 by Louis Kingscott. In 1932 it was reorganized, with Louis remaining as secretary-treasurer. The firm has been responsible for many of the most outstanding buildings in the State.

A. W. Kutsche & Co.

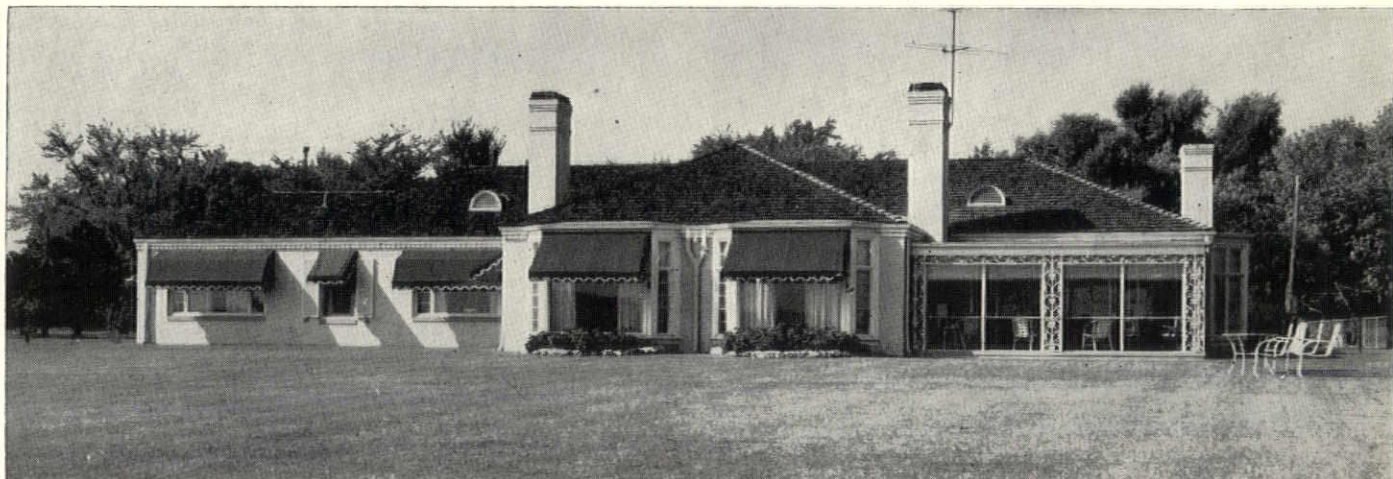
BUILDING CONSTRUCTION



TRinity 1-8410

2924 West Grand Blvd.

Detroit 2, Michigan



THE ANTHONY MOTSCHALL RESIDENCE
GROSSE POINTE SHORES, MICHIGAN
J. IVAN DISE, ARCHITECT

Andersen WOOD CASEMENTS, PICTURE and PRESSURE-SEAL double-hung windows were used throughout the Anthony Motschall residence.

The appearance, widespread use and always present functional qualities of Andersen windows recommend these units to the most discriminating home owner or architect. They are beautiful in appearance and beautiful in performance too.

We invite your inspection of these fine window units at our display room and warehouse on Fenkell Ave.

DISTRIBUTED BY

KIMBALL AND WILSON, INC.

WHOLESALE SASH AND DOORS

2127 FENKELL AVE.

DETROIT 3, MICH.

UNIVERSITY 1-3480

MRS. EMIL LORCH

Mrs. Emil Lorch, 70, wife of Prof.-Emeritus Emil Lorch, F.A.I.A., former Dean of the University of Michigan's College of Architecture, died in St. Joseph's Mercy Hospital in Ann Arbor on July 24, after a long illness.

Mrs. Lorch was born at Gartley in Aberdeenshire, Scotland on Sept. 1, 1880. She came to America as a child and, with her parents, the late John and Jane Wans Elmslie, went to Chicago, where she was educated at Hyde Park High School, and Armour Institute of Technology, and studied piano.

She was active in music circles, having been treasurer of the former Chamber Music Association in Ann Arbor, and patroness of Sigma Alpha Iota music sorority there. She was also a charter member and past president of the Faculty Women's Club in Ann Arbor.

The Lorches were married on Aug. 22, 1906 in Chicago, soon thereafter moving to Ann Arbor, where they lived since.

To her more intimate friends, Mrs. Lorch was known to be rather retiring by nature. She did not enjoy large groups, hence she attended few conventions. In this she was like her gifted brother, George Elmslie, who was so long associated with Louis Sullivan after Frank Lloyd Wright left him.

She made lasting, loyal friends of those who rang true, was democratic and tolerant to the last degree. She was above all, devoted to her family

and enjoyed helping as long as it was possible — in life and home and garden.

Many students, new instructors and others were made to feel at home by her, and she came to know much about their problems. Many have returned to see the family and have sent holiday greetings.

Besides her husband, she is survived by three daughters; Mrs. Roger Bailey of Salt Lake City, Utah; Mrs. George D. Wells, Jr. of Toledo, Ohio, and Mrs. W. Osler of Ann Arbor; one son, Richard E. Lorch of Lakewood, Ohio, and one granddaughter.

Also surviving are five sisters; the Misses Louise, Frances and Edith Elmslie, all of Chicago; Mrs. Lavinia Dow of Omaha, Neb., and Mrs. Isabelle Miller of Pittsburgh, Pa; and one brother, George Elmslie of Chicago.

Memorial services were held in Ann Arbor on Friday, July 27. The family home is at 1023 S. Forest Ave., Ann Arbor.

J. W. ROLLINSON

James W. Rollinson, well known in the building industry of Michigan for many years, as a manufacturers' agent, died in Harper Hospital, Detroit, on August 1, at the age of 67.

Mr. Rollinson was born in Marshall, Michigan. He graduated in architecture from the University of Pennsylvania. He had lived in Detroit for most of his life and had many friends here.

TWO NEW MEMBERS OF AIA

CLAIR W. DITCHY, of Detroit, secretary of The American Institute of Architects, has informed the Detroit Chapter, A.I.A., of the election to Institute membership and assignment to the Detroit Chapter of Joseph C. Burns of Detroit and C. Theodore Larson of Ann Arbor.

Burns received his degree of bachelor of science in architectural engineering from the University of Detroit in 1935 and has been employed in architectural offices in Detroit. He is at present with the office of Cornelius L. T. Gabler.

Larson received his A.B. degree from Harvard College in 1925, his M.A. degree from Harvard School of Design in 1929. His work has been mostly in the fields of editing and teaching. He has served on the editorial staffs of the Architectural Record and Architectural Forum. At present he is professor of architecture at the University of Michigan, College of Architecture and Design.

* * *

FREDERICK BRAUNING, of 3528 Nottingham Road, Detroit, is a new associate member of the Detroit Chapter, A.I.A., having been advanced from student associateship.

Brauning received his degree of Bachelor of Science in architectural engineering from Lawrence Institute of Technology, at which school Earl W. Pellerin, A.I.A., is head. He has been employed by the H. E. Beyster Corporation and Maguolo & Quick.

FINISH HARDWARE

Residential - Commercial



BULLOCK-GREEN Company
Hardware Specialists Since 1888

TASHMOO 5-3490

DETROIT 16, MICH.

2554 MICHIGAN AVE.



N. H. MALOW CO.

CARPENTER CONTRACTORS

Announces
Removal To Its New Building

15850 WYOMING AVENUE
DETROIT 21, MICHIGAN
Diamond 1-1880

Products News

DETROIT STEEL PRODUCTS COMPANY announces the election of H. D. Palmer to fill the office of president of the company, made vacant by the death of W. C. Owen on June 8, it is announced by H. F. Wardwell, chairman of the board.

C. Garrit Bunting was named secretary; W. J. Maurer, general production manager; John E. Bloomstrom, director of industrial relations.

W. H. Beeby has been named district manager of the Michigan sales territory, to succeed Walter J. Torbet who died in June. Lee S. Reese was named district representative for the Strand Garage Door Division.

PRODUCERS' COUNCIL, INC., Detroit Chapter will hold its first fall dinner meeting on Monday, September 10 at Hotel Fort Shelby. Thereafter during the current season meetings will be held regularly on second Mondays each month at the same hotel.

Architects and engineers are cordially invited to attend these Council meetings, it is announced by W. F. Mulcahy, vice-president of the organization.

BULLETIN:

During your conference I kept in touch with the hotel by telephone and was informed that everything was going nicely, but your good letter is most reassuring.

I am still laid up at home with my bad foot, and cannot stir around. I am sorry that this kept me from a visit with you and others of your group, which I would have so much enjoyed.

It is good to know that your Society plans to be back with us another year. We are most grateful for your interest and continued confidence in our ability to serve you.

W. STEWART WOODFILL,
President, Grand Hotel

C. WILLIAM PALMER, A.I.A. announces, effective Sept. 1, the removal of his offices from 2663 Penobscot Bldg. to 409 Griswold St., Detroit 26, where he will occupy the same space he had before World War II.

The telephone number will remain the same, Woodward 2-1535.

The Palmer office is now engaged on the State hospital program and other projects, including the Redford Avenue Presbyterian Church, construction of which is to start in September.

He also has in progress the air conditioning and other trades to complete the second floor of the RWAY building at W. Grand Boulevard and 14th Street, in Detroit.

Heineman & Lovett Co.

WATERPROOFING ENGINEERS AND CONTRACTORS

**I GENUINE
IRON BOND
SYSTEMS**



**H I - TEX
CEMENT
COATINGS**

For Basements, Pools, Tanks
And Other Sub Structures

Restoring Concrete & Masonry
Super Structures, Cement Coating
For Water proofing & Decoration

5327 Tireman Avenue, Detroit 4, Michigan

TYler 6-1226

"DEPEND ON A DEPENDABLE NAME"

JOHN A. MERCIER BRICK COMPANY

3895 Roulo Ave., Dearborn

VI. 1-0761

MANUFACTURER & DISTRIBUTOR

Slag Block *Mercrete* Slag Brick

Lighter in Weight

Lighter in Color

QUALITY FACE BRICK

"SPECIFY THE BEST"

WHY YOU SHOULD SPECIFY

DIEBOLD VAULT DOORS

1. FOR YOU—Diebold maintains a vault door specialist in Detroit whose entire time is at your call and disposal.
2. FOR YOUR CLIENT—A direct factory branch and warehouse in Detroit with factory trained experts who can be reached any hour of the day or night means fast, personalized service when fire or burglars strike.
3. FOR THE CONTRACTOR who puts into brick and stone the building you have created—Our new non-grout doors have greater tolerances than any doors on the market, simplifying and speeding installation and really biting into the rising building costs.

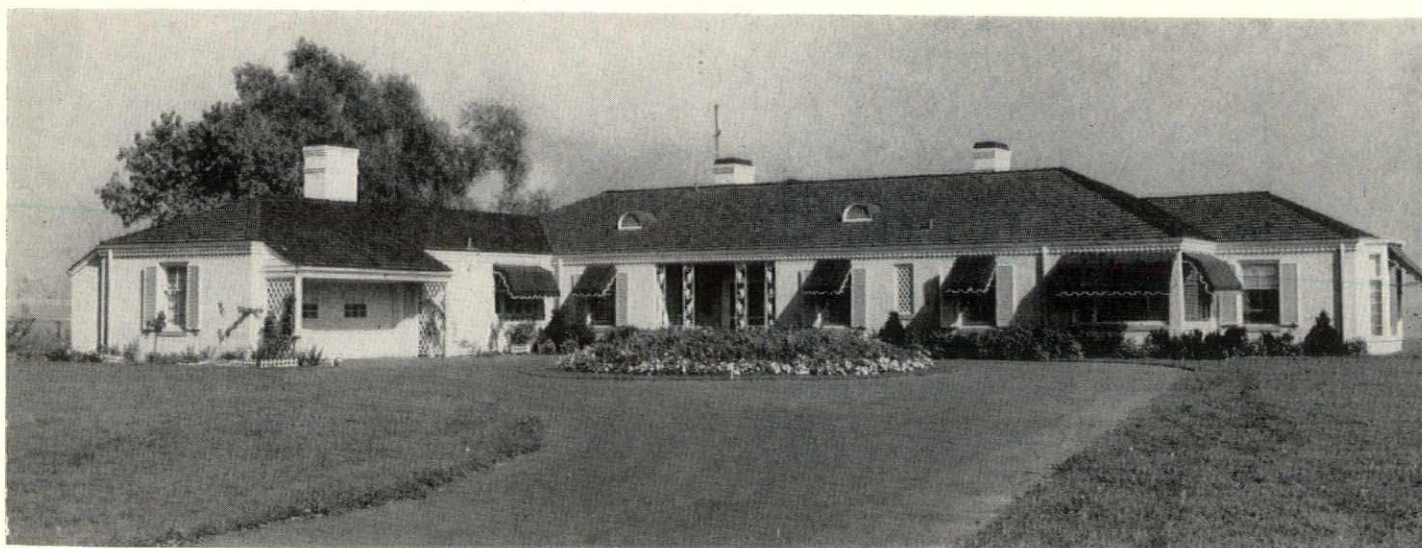
Built to S.M.N.A. Specifications
Underwriters Laboratories Inspected

Diebold

INCORPORATED

4105 CASS AVE., DETROIT 1

TEmpLe 3-4477



GRACIOUS LIVING IN GROSSE POINTE

Residence of Mr. and Mrs. Anthony Richard Motschall, 824 Lake Shore Road, Grosse Pointe Shores, Mich

The opportunity to design and build the home of Mr. and Mrs. Anthony Richard Motschall was one that would have been welcomed by any architect. The prominent location of the property, adjacent to the Grosse Pointe Yacht Club, and the fact that it was a lot reclaimed from the lake, offered a challenge in both design and construction.

The architect is pleased to have received many compliments on the design. The structural problem was overcome by using special foundations and avoiding the use of any basement.

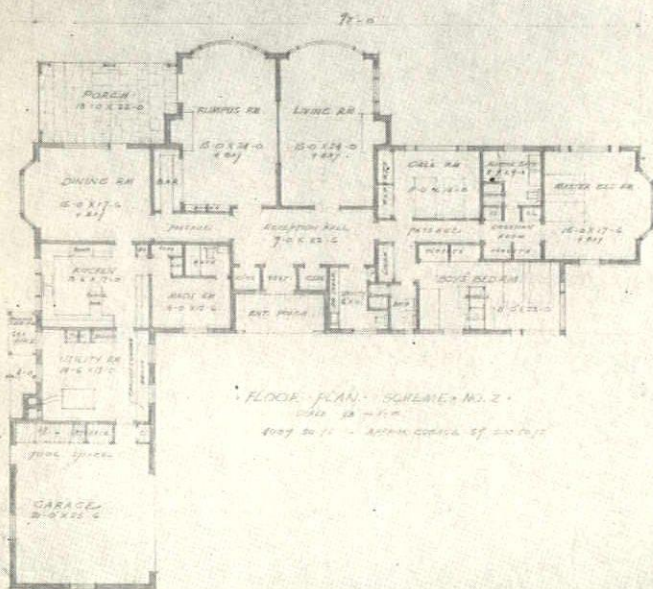
The house was designed for a family of two adults, 3 sons, a daughter, and one resident servant. A study of the plan will show how this was accomplished.

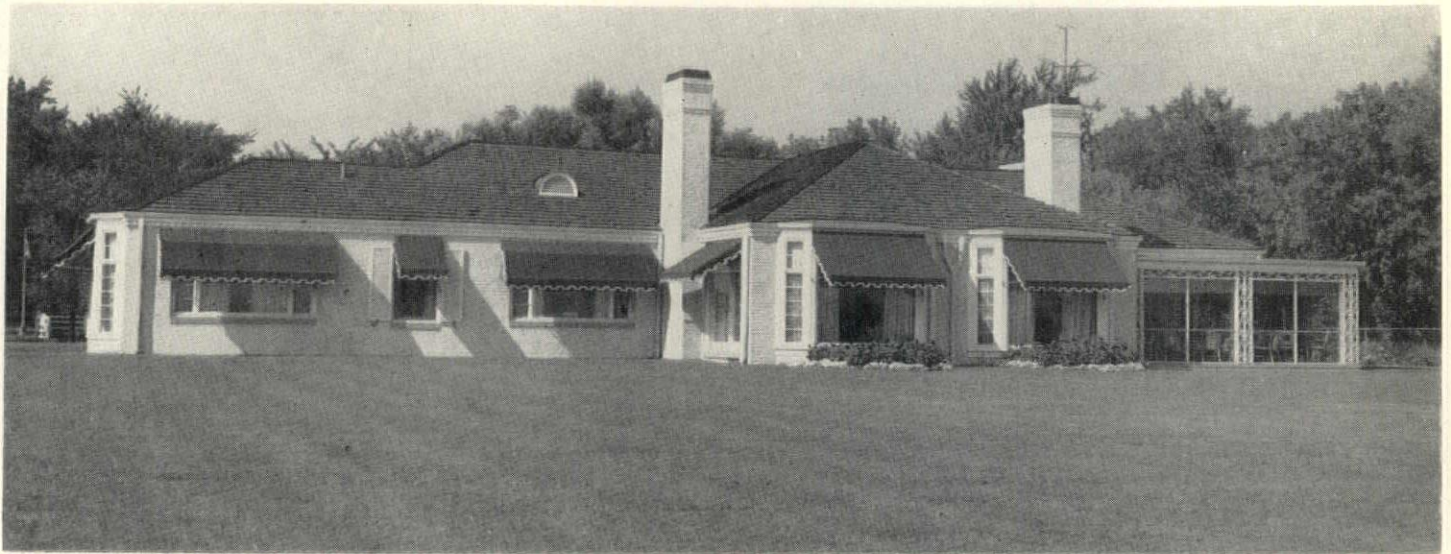
The house contains many interesting features



ABOVE: Rumpus Room Showing Bar

BELOW: Rumpus Room With Panels Closed

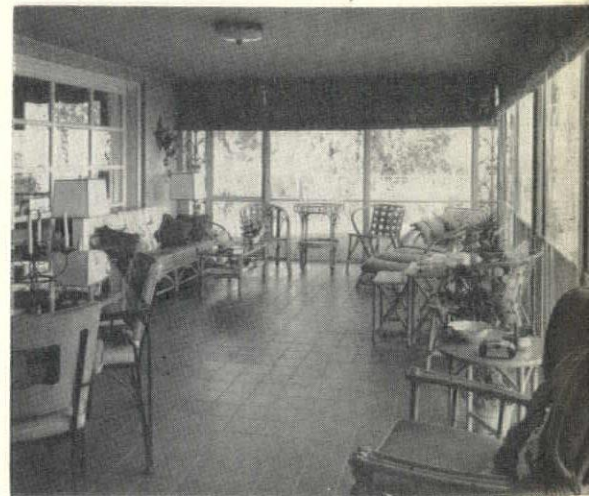




All Photos by William E. Bradley, Detroit

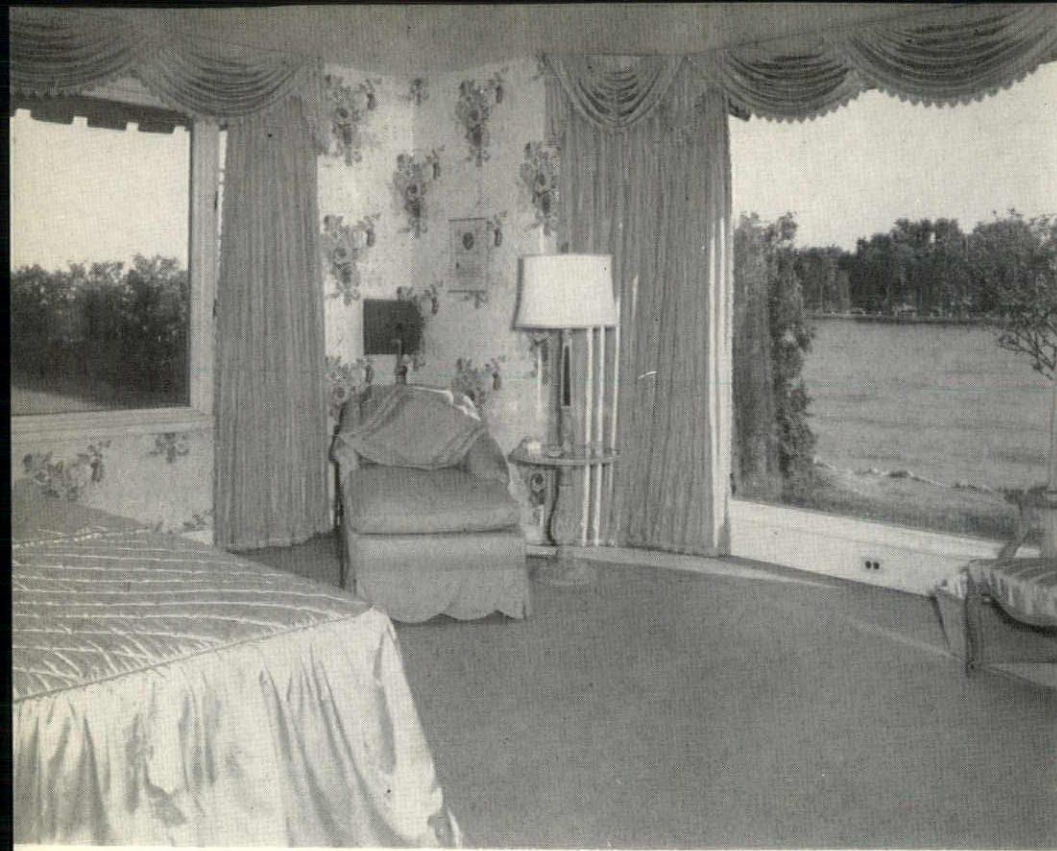
ABOVE: Lake Shore Elevation

BELOW: Interior of Porch Shown Above



BELOW: Built-in Vanity in
Powder Room Off Reception Hall





WM. F. BACK LUMBER CO.

BULLOCK-GREEN HARDWARE CO.

GENERAL ELECTRIC SUPPLY CORP.

ROBERT HUTTON & CO., Inc.

KIMBALL & WILSON, Inc.,

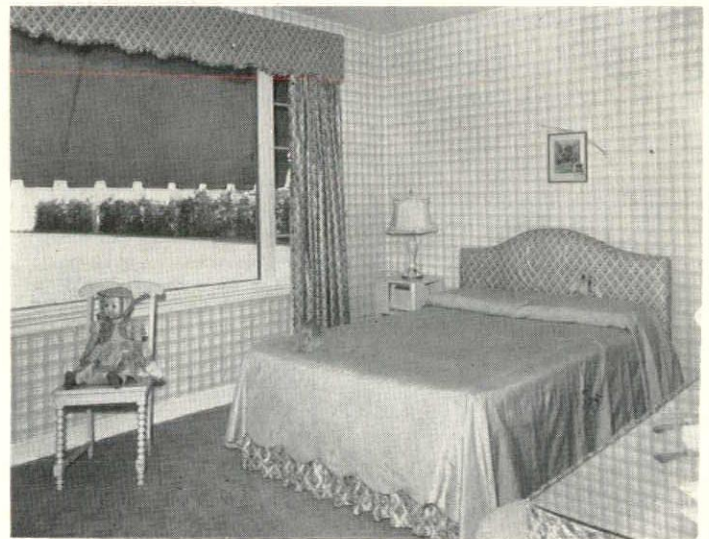
WALTER H. MAST, Inc.

GUY E. MURPHY CO.

TEETZEL CO.

TOLEDO PLATE & WINDOW GLASS
CO.

among which are the large sliding partitions between the living room and the rumpus room allowing them to be opened up into one large room for entertaining. The bar off the rumpus room which is concealed by the paneling when closed can be locked from the inside and entirely isolated in case of a children's party or similar occasion. Every principal room has a picture window and an outlook to the lake. The entire house is heated with radiant heat in the concrete floors, including the porch which is enclosed in glass in winter and screened in summer. As to other features and conveniences, the plan and illustrations shown should speak for themselves.



ARCHITECT OF THE MONTH



J. IVAN DISE has been in private practice in Detroit for almost 30 years. Dise has been associated with architecture since he was 15 years old at which time his father an architect of York County, Pennsylvania, began to teach him the ins and outs of the profession.

He received his early education in the local public schools and York Collegiate Institute. Entering the University of Pennsylvania in 1905, he graduated in the Architectural Department with a B. S. in Arch. Degree 1909.

After some preliminary training in smaller offices in Pennsylvania, he joined the staff of Cass Gilbert in New York where he was employed on design and working drawings for such buildings as The Detroit Public Library, Waterbury City Hall, New Haven Railroad Station, Austin Nichols Warehouse (of World War I Fame) and other important buildings.

After 6 months on the Mexican Border in 1916 with the 7th N.Y. Infantry, he was commissioned as an Officer in the Air Service in World War I. There he met some of his life-long friends such as Bill Palmer, who served with him. Actually, Palmer had much

to do with his decision to come to Detroit after the war because of Palmer's glowing description of the motor city.

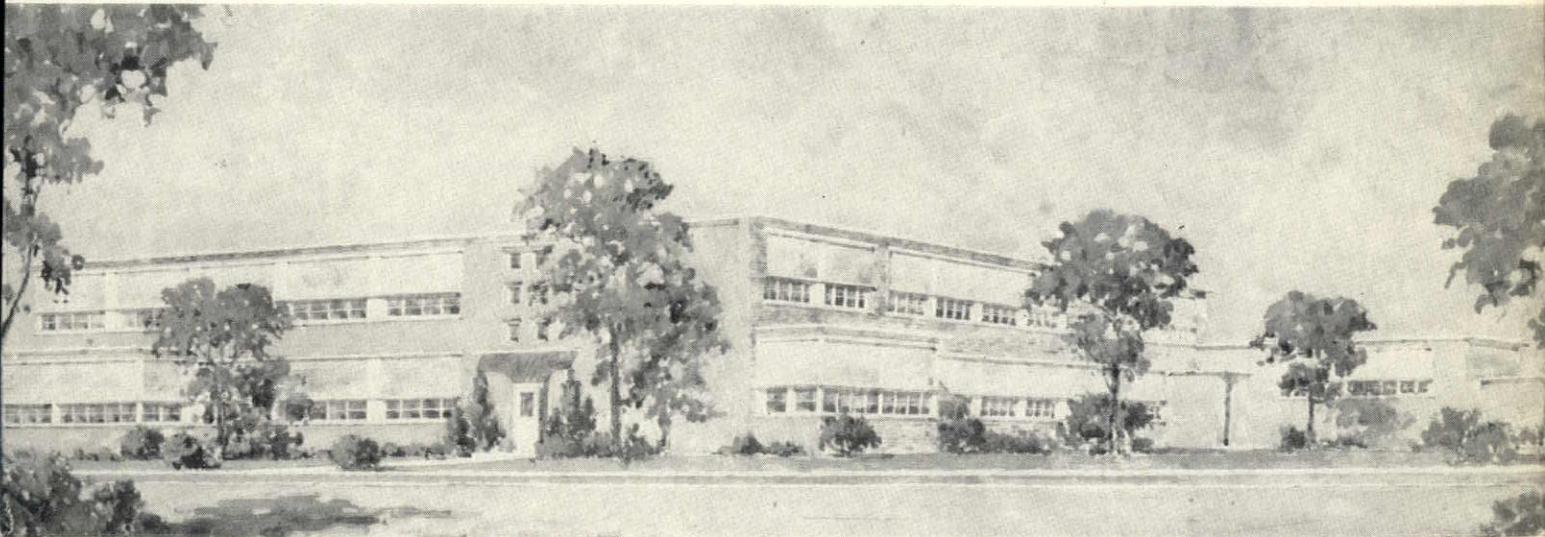
Come to Detroit he did and according to all subsequent happenings Albert Kahn was glad to receive him and install him as one of his designers along with the rest of the "Prima Donnas" such as Wirt Rowland, Hugo Knapp and Bob Hubel.

During his career as a draftsman he won many prizes in competitions for houses and other projects.

On January 1, 1922 he established his own practice and since then has designed and built hundreds of important homes in Grosse Pointe, Bloomfield Hills, Detroit and many neighboring cities, as well as Detroit City Schools since 1926 and other commercial, church and educational buildings.

He has been a member of the A.I.A. since 1924 and has been registered to practice in New York and Wisconsin as well as in Michigan. He also has a Senior Council Record with the N.C.A.R.B.

We believe that the two buildings illustrated are good examples of the standard of work from the Dise office.



Rendering by Fred Crowther

DANIEL J. HEALY ELEMENTARY SCHOOL

22701 West Davison Avenue and West Parkway, Detroit, Michigan

The Detroit Board of Education's five-year building program has been

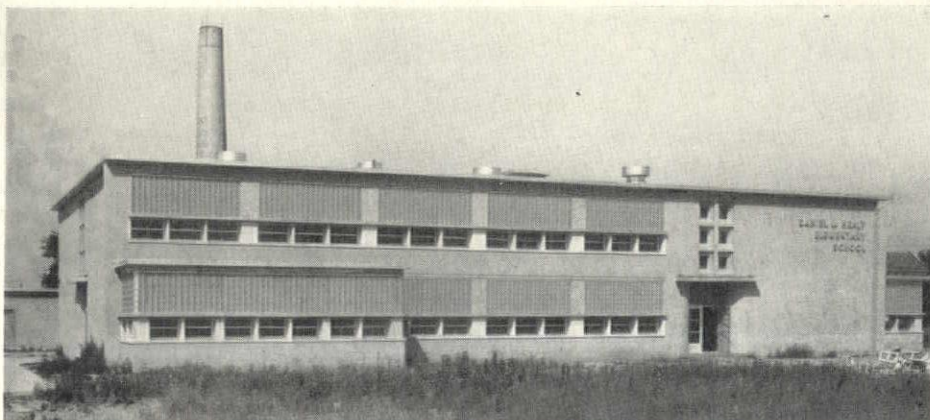
a great boon to the Dise office, although either fortunately or unfor-

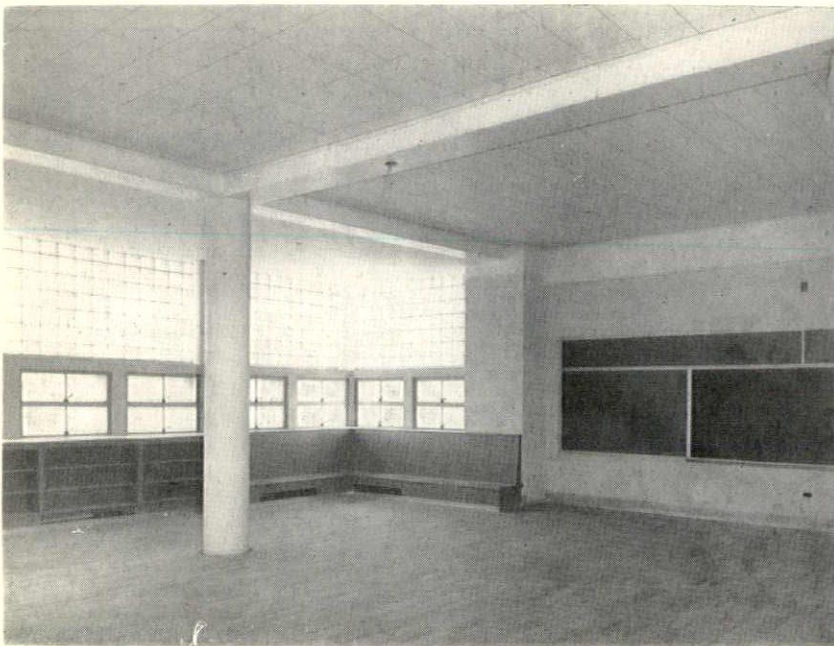
tunately, it had in the last 25 years designed so many first units that most of its work consisted of building additions to its former projects.

In consequence of this the office was really pleased to be awarded the Daniel J. Healy Elementary School — a new project.

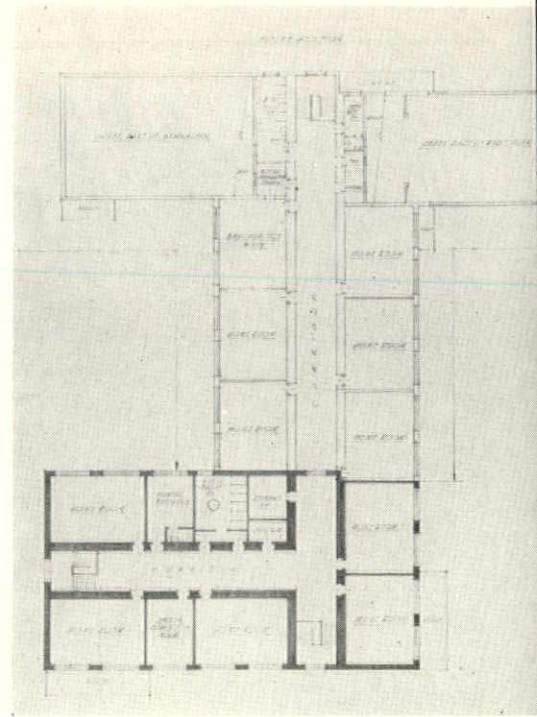
Dise's school additions naturally followed the original designs but the Healy gave an opportunity to really go modern.

"In this connection as well as with all our present and former school work we can't give too much credit to the Board of Education's Depart-

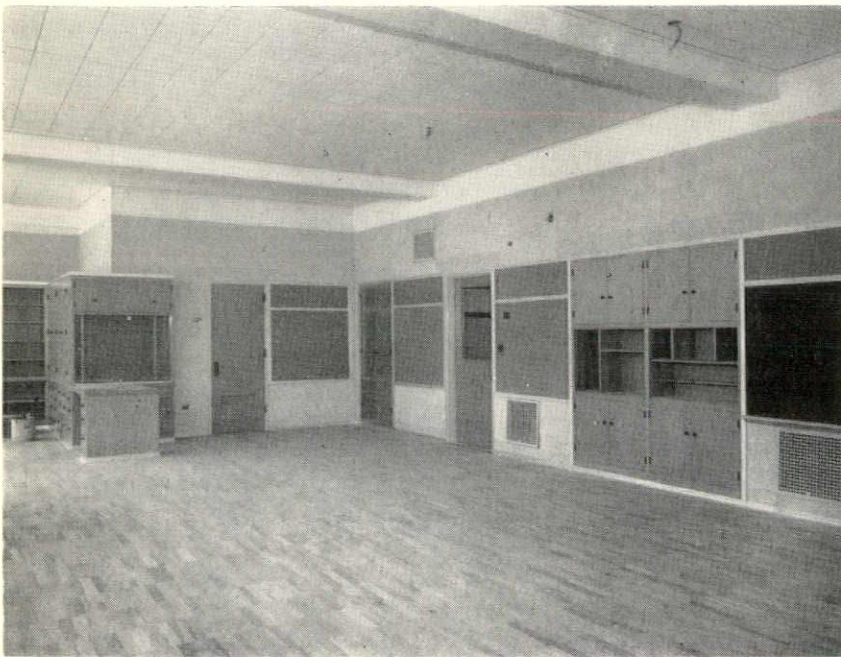




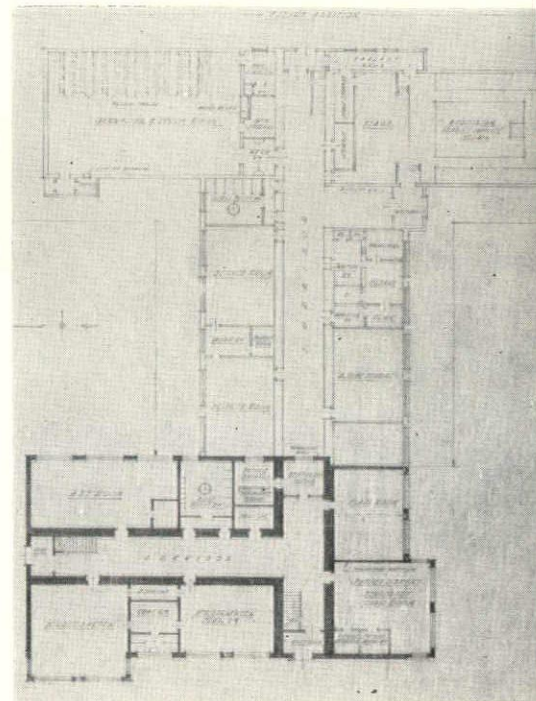
KINDERGARTEN ROOM



SECOND FLOOR PLAN



ART ROOM



FIRST FLOOR PLAN

ment of Architectural Planning under the direction of Mr. George Schulz," Dise says.

"The basic plans of all our schools were prepared by this department as directed and supervised by the Board's Educational Staff. In our case these plans have all been so well thought out from the standpoint

of possible exterior appearance that in designing the exteriors we have never found it necessary to suggest any change in arrangement.

"The plans published herewith are the original sketches furnished to us by this department.

"We are illustrating herewith photographs of the completed first unit

and a perspective showing the design of the ultimate building.

"The design of the Healy School follows the trend of most of the recent new buildings for the Board.

"The exterior is of a buff face brick with stone trim, glass block and steel windows. The deeply recessed lower windows are the result of a design

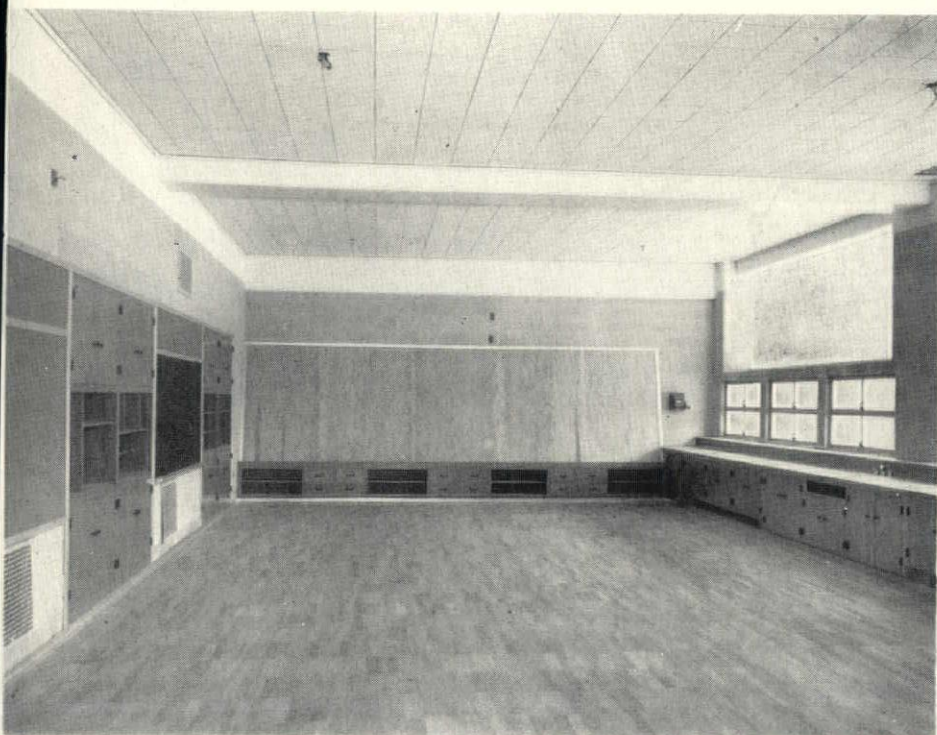


Photos by William E. Bradley, Detroit

and detail devised by Mr. Schulz which has proven eminently successful. We are pleased that our school was the guinea pig for this experiment. Except for lightproof shades in special rooms, this design eliminates all window shades. The exterior

doors and frames are of aluminum. All interior door frames are of steel. All interior trim of blackboards, cork boards, cases, etc. is of aluminum. Class rooms and corridors generally are of the standards established by the Board with cinder block and

glazed tile walls, acoustic tile ceilings, wood block, asphalt tile, linoleum and ceramic tile floors, metal lockers and shelving, fluorescent lighting, modern plumbing fixtures, forced ventilation and concealed radiation."



ART ROOM

ALUMINUM & ARCHITECTURAL METALS CO.
THE BELDEN-STARK BRICK CO.
A. BRUCE & SONS, Inc.
CADILLAC GLASS CO.
HANLEY CO.
JOHN R FUEL & SUPPLY CO.
JOSEPH A. KRAUSMANN CO.
KOENIG COAL & SUPPLY CO.
NICK KRUGER & SON
LONG SIGN CO.
NELSON COMPANY
O'BRIEN & WILLIAMSON METAL PRODUCTS CO.
THE C.J. PAGE TILE CO.
PENINSULAR SLATE CO.
SUN ELECTRICAL CONTRACTING CO.
TURNER-BROOKS, Inc.
HARRY T. WUNDERLICH

The Michigan Society of Architects board of directors will meet at Hotel Hayes in Jackson on the afternoon and evening of Wednesday, September 12, it is announced by Leo M. Bauer, Society president.

The board meets regularly, on second Wednesdays, in various cities throughout the State.

Officers are Leo M. Bauer of Detroit, president; Adrian N. Langius of Lansing, Ralph W. Hammett of Ann Arbor, and James A. Spence of Saginaw, vice-presidents; Peter Vander Laan of Kalamazoo, secretary; John O. Blair of Detroit, treasurer, and Talmage C. Hughes of Detroit, executive secretary.

Directors are Alden B. Dow of Midland, Carl J. Rudine of Grand Rapids, Arthur J. Zimmerman of Lansing; Sol King, Charles B. McGrew and Linn C. Smith, all of Detroit.

The Society's 38th Annual Convention is scheduled to be held at Hotel Statler in Detroit, March 5-8, 1952. Linn Smith is Convention Chairman.

McCAUSEY LUMBER CO.

7751 Lyndon
Detroit 21, Michigan

Telephone
UNiversity 1-2523

GEO. T. GILLERAN
OWNER

HARRIGAN and REID CO.

HEATING
&
PLUMBING
ENGINEERS

SUMMER AND WINTER
AIR CONDITIONING

SHEET METAL WORK

1365 BAGLEY AVE., DETROIT 26

WOodward 1-0243

SPECIALIZING IN STAINLESS STEEL

DIRECTORY OF ADVERTISERS

Aluminum & Architectural Metals Co.	10
Armstrong Co., The	8
Back, Wm. F. Lumber Co.	32
Belden-Stark Brick Co.	32
Braun Lumber Co.	32
Bruce, A. & Sons, Inc.	22
Bryant Automatic Heating	22
Bullock-Green Co.	24
Burke, O. W. Co.	14
Cadillac Glass Co.	10
Candler, J. D. Roofing Co., Inc.	8
Century Brick Co.	6
Cinder Block, Inc.	2nd Cover
Concrete Pipe Assn. of Mich., Inc.	3rd Cover
Couse, Walter L. & Co.	20
Darin & Armstrong, Inc.	14
Den Braven, M. Co.	20
Detroit Brick & Block Co.	3
Detroit Edison Co., The	4th Cover
Dickinson, H. H. Co.	4
Diebold, Inc.	25
Dunn Blue Print Co.	20
Dunn-Rainey Co., The	3rd Cover
Eastern Cabinet Works	14
Freeman, John H. Co.	12
Glanz & Killian Co.	8
Grace Harbor Lumber Co.	32
Gypsum Constructors, Inc.	22
Hamill, N. W. Co.	10
Hanley Company	6
Harrigan & Reid Co.	32
Heineman & Lovett Co.	25
Horn Fuel & Supply Co.	2nd Cover
Huron Portland Cement Co.	8
Hutton, Robert & Co., Inc.	4
John R Fuel & Supply Co.	12
Kimball & Wilson	23
Koenig Coal & Supply Co.	20
Krausmann, Joseph A. Co.	3
Kruger, Nick & Son	22
Kurtz Brick Co.	14
Kutsche, A. W. & Co.	23
LaSalle Electric & Mill Supply Co.	6
Long Sign Co.	2
N. H. Malow Co.	24
Martin, F. H. Construction Co.	8
Mast, Walter H., Inc.	4
McCausey Lumber Co.	32
Meier Cut Stone Co.	2
Mercier, John A. Brick Co.	25
Michigan Consolidated Gas Co.	2nd Cover
Moynahan Bronze Co., Inc.	3rd Cover
Murphy, Guy E. Co.	10
Nelson Co.	12
O'Brien & Williamson Metal Products Co.	14
Odien, G. A. Equipment Co.	14
Page, C. J. Tile Co., The	22
Peninsular Slate Co.	18
Peterson Window Corp.	6
Plastering Industry Joint Conference Board, Inc.	1
Plastic Products Co.	10
Restrick Lumber Co.	32
Rogers, Maurice V. Co.	2
Sales, Murray W. & Co.	4
Sibley, F. M. Lumber Co.	32
Sterling Structural Steel Co.	2
Stevens Heating & Ventilating, Inc.	2
Stevens, Frederic B., Inc.	20
Sun Electrical Contracting Co.	22
Teetzel Co.	16
Thayer, R. D. Co.	20
Thomas Brick & Tile Co.	8
Toledo Plate & Window Glass Co., The	12
Turner-Brooks, Inc.	10
Viking Sprinkler Co.	12
Virginia Metals Co.	24
Wunderlich, Harry T.	4

★ ★

Duplicate!

- BLUEPRINTS (Nu-Blue)
- PHOTOSTATS (Sharp)
- PHOTOGRAPHIC MURALS

ENLARGEMENTS • TONING
MOUNTING

Snappy Delivery Service!

CALL FOR OUR SALESMAN

The Multi-Color Co.

629 Woodward
WO. 1-0666

126 Delaware
TR. 5-0780

Monthly Bulletin, Inc. is now a new subsidiary of the Michigan Society of Architects, a Michigan non-profit corporation, the purposes of which are to own and publish the Monthly Bulletin of the Society. For the past 25 years the Bulletin has been unincorporated.

Incorporators are Alden B. Dow, of Midland; Carl J. Rudine of Grand Rapids, and James A. Spence of Saginaw. Talmage C. Hughes, 120 Madison Avenue, Detroit 26, the Bulletin's editor, is resident agent.

BELDEN FACE BRICK

SINCE 1885

For Color Texture and Quality
It's Better to Build with Brick
Than to Wish You Had . . .
The Money SAVED Will Pay
Your Mortgage Faster

The
BELDEN-STARK BRICK CO.

Michigan's Foremost Brick Co.

14305 Livernois Avenue
Detroit 4, Michigan

WEbster 3-1331

Patronize Bulletin Advertisers

— LUMBER DEALERS —

Wm. F. Back 

LUMBER CO. WA. 1-9460
5172 ST. JEAN AVENUE • DETROIT 13, MICHIGAN

BRAUN LUMBER COMPANY

TO. 8-0320

1555 E. Davison

Detroit 3

GRACE HARBOR Lumber Company

13833 West Chicago
DETROIT 28, MICH.

ESTABLISHED 1892
WE 3-4913

Restrick Lumber Company

Since 1884
14400 WYOMING AVENUE
DETROIT 21, MICHIGAN
WE. 3-4830



F. M. SIBLEY
LUMBER CO.
LO. 7-5100

6460 Kercheval Avenue
Detroit 14, Mich.



MOYNAHAN BRONZE CO., Inc.

ORNAMENTAL METAL CONTRACTORS

Sales Office, 2833 Cadillac Tower, Detroit 26, Michigan

Phone: WOODWARD 3-9421

Manufacturing—Flat Rock, Michigan



City of LIVONIA, Michigan

Sewage disposal System #1—
designed for the city of Livonia, by the
firm of Hubbell, Roth, and Clark, Inc.,
consulting engineers, is under construc-
tion at the present time.

Specifications for this 75,000 foot project,
allow for the use of the following concrete
sewer pipe.

ASTM C-14-41

(non-reinforced concrete sewer pipe)

14,937 ft. — 12" dia.

11,711 ft. — 15" dia.

15,010 ft. — 18" dia.

1,332 ft. — 21" dia.

ASTM C-75-41

(Rein. Con. Sewer)

7,348 ft. — 24" dia.

12,703 ft. — 30" dia.

7,455 ft. — 36" dia.

900 ft. — 42" dia.

ASTM C-76-41

(Rein. Con. Culvert)

571 ft. — 42" dia.

3,167 ft. — 48" dia.

Concrete Pipe Association of Michigan, Inc.

P. O. BOX 416

ANN ARBOR, MICH.

THE DUNN - RAINEY COMPANY

MANUFACTURERS

"DURA-GLAZE" ELASTIC GLAZING COMPOUNDS

"DURA-SEAL" ELASTIC CAULKING COMPOUNDS

METAL AND WOOD SASH PUTTY

4461 West Jefferson Avenue

DETROIT 9, MICHIGAN

Telephone

TAshmoo 5-7156

Planned Lighting Brings
Diamonds out of the Dark



... pays off for Sidney Krandall & Sons

"Presenting precious stones in the right light is the life-blood of a jeweler's business. Ours is lighting that attracts—lighting that sells," says Mr. Sidney Krandall.

Planned Lighting paves the way to sales at Krandall's. Outside lights command without shouting. And interior lighting harmonizes with store decor; makes "show-offs" of the gems it shines upon. It's dynamic, purposeful lighting — co-product of Leo Pearl Associates and Edison's lighting consultants.

Modernizing? Building? Then plan on Planned Lighting. Ask your architect or contractor to call in Edison's lighting men. Their services are yours without charge.

Detroit Edison

Call WO 2-6800 and ask for the
 Lighting Division.

