

Frederick Guthelm  
American Institute of Architects.  
1741 New York Ave.,  
Washington 8, D.C.

# MONTHLY BULLETIN



## MICHIGAN SOCIETY OF ARCHITECTS

*A State Organization of The American Institute of Architects*

### OFFICERS

LEO M. BAUER, President  
RALPH W. HAMMETT, 1st V.-President  
ADRIAN N. LANGIUS, 2nd V.-President  
JAMES A. SPENCE, 3rd V.-President  
PETER VANDER LAAN, Secretary  
JOHN O. BLAIR, Treasurer  
TALMAGE C. HUGHES, Executive Sec.

TALMAGE C. HUGHES, F.A.I.A., Editor  
THEODORE G. SEE MEYER, JR., Adv. Dir.  
120 Madison Avenue, Detroit 26  
Woodward 5-3680

### DIRECTORS

ALDEN B. DOW  
SOL KING  
CHARLES B. MCGREW  
CARL J. RUDINE  
LINN C. SMITH  
ARTHUR J. ZIMMERMANN

Entered as second class matter January 15, 1946 at Postoffice at Detroit, Mich., under Act of March 3, 1879. Published monthly  
Subscription price \$3 per year. (Members \$2). 30c per copy (Roster Numbers \$1).

Volume 25

DETROIT, MICHIGAN, JUNE, 1951

Number 6

### LOUISIANA STATE UNIVERSITY - General Development Plan



SWANSON ASSOCIATES, ARCHITECTS & PLANNERS, BLOOMFIELD HILLS, MICHIGAN





*An Established Dealer*

*Carrying a Complete Line of All  
Masonry and Plastering Materials*

Distributors of Concrete Masonry Reinforcing

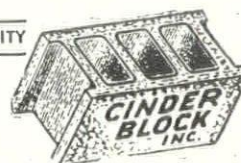
## HORN FUEL & SUPPLY CO.

9133 Hubbell Ave., Detroit 28  
11841 Kercheval Ave., Detroit 14

VERmont 8-2200  
VALley 2-4450

MANUFACTURERS OF  
CINDER CONCRETE MASONRY UNITS  
SINCE 1923

CONTROLLED QUALITY



STEAM CURED

9143 HUBBELL AVE.

DETROIT 28

VERmont 8-3200

## Famous Baked Goods From Gas-Fired Ovens



At the Women's City Club of Detroit, 2110 Park Avenue, members and guests are served baked goods well-known for their excellence and variety. The Club's own bakery products are also sold to members in the lobby bake shop, and shipped throughout the country as a special catering service.

Three Gas-fired bake ovens, each with three individually controlled decks, permit the Club's bakers to handle a variety of products simultaneously at different temperatures—and maintain the quality for which the Club is famous.

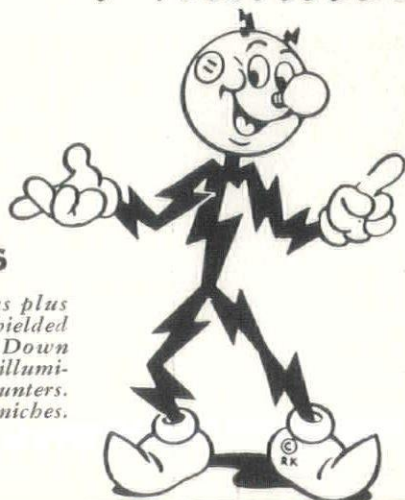
**MICHIGAN CONSOLIDATED GAS COMPANY**





**MAX'S JEWELRY COMPANY  
10000 Jos. Campau Avenue  
Hamtramck, Michigan**

## *Planned Lighting...*



### **FEATURES**

"Drop ceiling" areas plus continuous rows of shielded fluorescent fixtures. Down lights provide good illumination over the counters. Note the lighted wall niches.

"Our lighting system was planned to fit the particular needs of our store. I am very well pleased with the results and am sure our sales are better. Customers and employees have commented most favorably." C. Martin, Manager.

Let an Edison expert help you plan lighting that sells. Phone WO 2-2100, extension 300.

**Detroit Edison**



- For Window Cleaning . . .
- For Cleaning of Brick, Stone, Glass, and Interior Tile . . .
- For Cleaning of Steel Partitions . . .

*... always depend on*  
**DAELYTE**

DAELYTE has the experience, equipment and specialized personnel to render complete dependable service. Whether a building is the commercial, industrial or institutional type . . . located in Michigan, Ohio, Indiana or Pennsylvania . . . Daelyte's service is available the year around. So whenever the occasion arises for a cleaning job of any kind, don't be in the dark—call "Daelyte."

### Other Daelyte Services:

- Painting
- Building Cleaning
- Caulking
- Sand Blasting
- Tuck Pointing
- Steam Cleaning
- Concrete Repairs
- Wall Washing
- Water Proofing
- Cement Finishing
- Glazing
- Floor Waxing
- 24-hour Janitor Service
- Cleaning and Pointing tile in new buildings

A Daelyte representative will gladly call and explain in detail Daelyte's complete service.

## Daelyte Service Co.

*Complete Building Maintenance — since 1920*

300 Riopelle St., Detroit 7  
 Woodward 1-4131

## J. A. UTLEY CO.

GENERAL CONTRACTING

FOR

SWANSON ASSOCIATES'

OFFICES

BLOOMFIELD HILLS, MICHIGAN

723 East Ten Mile Road, Royal Oak, Mich.  
 Lincoln 1-3280                      Jordan 4-6960

FLINT BRANCH OFFICE

3821 Lapeer Road, Flint, Michigan  
 Flint 3-8247

## HEATING REFRIGERATION AIR CONDITIONING

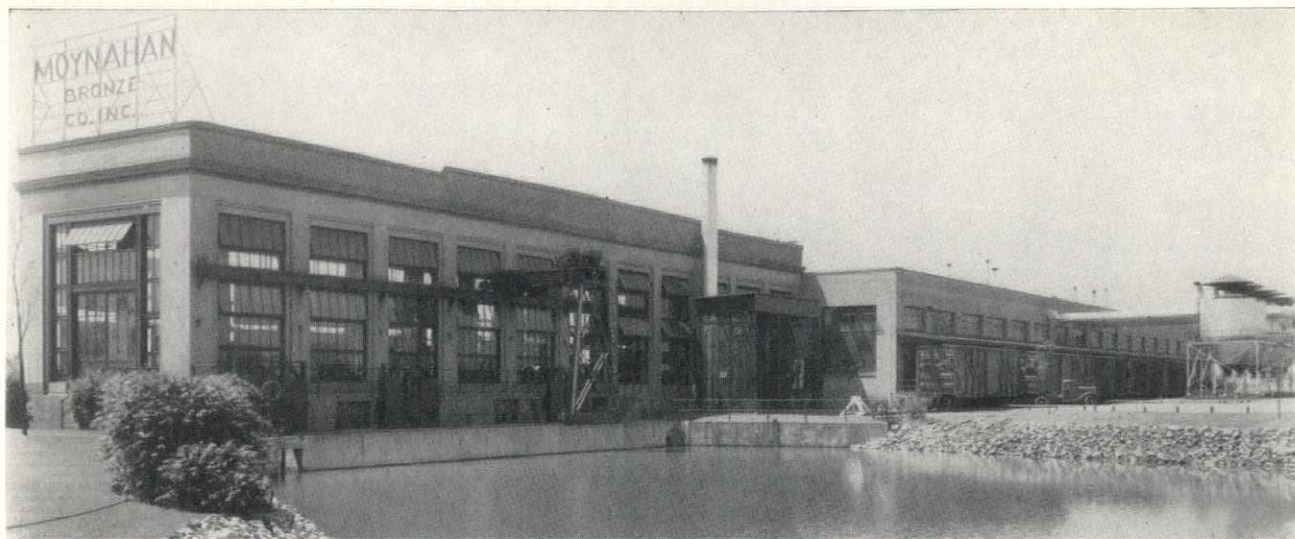
*Designed - Installed - Serviced*  
*Specialists for Industrial Process*

OUR  
 31st YEAR



**Mechanical Heat & Cold Inc.**  
 12320 HAMILTON AVE., DETROIT 3  
 PHONE TO. 8-9600





## MOYNAHAN BRONZE CO., Inc.

ORNAMENTAL METAL CONTRACTORS

Sales Office, 2833 Cadillac Tower, Detroit 26, Michigan

Phone: WOodward 3-9421

Manufacturing—Flat Rock, Michigan

PERMA-COLOR

## FACE BRICK

For BEAUTY and PERMANENCE

Distributor for  
PITTSBURGH-CORNING GLASS BLOCK

and for  
CHEM BRICK

VITRIFIED PIPE

## Century Brick Co.

SAM BURTMAN, Mgr.

14900 LINWOOD AVENUE  
DETROIT 21, MICHIGAN  
UNiversity 1-8200

**FASTER-EASIER  
GLASS SETTING**  
in all  
types of metal sash  
Ideal for aluminum



## PLASTI-GLAZE TYPE "C" GLAZING COMPOUND

(Dark Grey or Aluminum Grey)

See our 1951 Sweet's File Catalog  $\frac{7c}{PI}$

"ONE WIPE" APPLICATION cuts glazing time.  
Ready to use. No mixing or thinning required.

FIRM, ELASTIC BOND that sets quickly but  
always stays semi-plastic to withstand vibration  
and maintain a constant seal.

FOUR FACTORIES TO SERVE YOU . . . Detroit,  
Chicago, Jersey City, and New Orleans.

**PLASTIC  
PRODUCTS  
COMPANY**

General Office and Laboratory  
6451 GEORGIA AVE.  
DETROIT 11, MICH.

## Turner-Brooks, Inc.

FLOOR COVERING AND ACOUSTICAL CONTRACTORS

TOwnsend 8-2470

9910-30 DEXTER BOULEVARD

Detroit 6, Mich.



## MEIER CUT STONE Co.

FINE BUILDING STONES FOR FINE BUILDING PROJECTS

SERVICE  
SINCE  
1865

MAIN OFFICE  
9664 French Road  
at Gratiot  
Detroit 13, Mich.  
WAlnut 1-3343  
Yard No. 2, 6615 French Rd.

*Fabricators & Erectors of Structural Steel for Over Twenty-Five Years*

**S**TERLING  
STRUCTURAL  
STEEL CO.

*Structural and Miscellaneous Iron Work*

VE. 8-0230

12700 LYNDON  
At MEYERS ROAD  
DETROIT 27, MICH.

NEON *and* METAL LETTERS  
**Lona** SIGN CO.  
6209 HAMILTON AVE.  
DETROIT 2, MICH.  
PORCELAIN • STAINLESS • ALUMINUM



**Maurice V. Rogers  
Company**

GENERAL  
CONSTRUCTION

COMMERCIAL BUILDING  
CUSTOM RESIDENTIAL

UNiversity 3-3171  
15849 WYOMING AVE.  
DETROIT 21, MICHIGAN



**STEVENS HEATING & VENTILATING, INC.**  
PROMPT SERVICE ON COMMERCIAL AND INDUSTRIAL HEATING

ALL LEADING MAKES OF BOILERS, FURNACES, GAS & OIL BURNING EQUIPMENT  
FOR AUTOMATIC HEATING

TRinity 5-7625

Lincoln 3-2752



# MONTHLY BULLETIN

MICHIGAN SOCIETY OF ARCHITECTS

120 Madison Avenue Detroit 26, Michigan  
(Formerly Weekly Bulletin)

Owned by the Michigan Society of Architects, a Michigan non-profit corporation. Founded, edited and published by Talmage C. Hughes, F.A.I.A., Executive Secretary of the Michigan Society of Architects and of the Detroit Chapter of The American Institute of Architects, under the direction of the Society's Administrative Committee—Alden B. Dow, Chairman, James A. Spence, Arthur J. Zimmerman.

## Other Society Committees:

**Education and Research**—Ralph W. Hammett, Chairman; John O. Blair, Alden B. Dow, Sol King.

**Public and Professional Relations**—Charles B. McGrew, Chairman; Adrian N. Langius, Linn C. Smith, Peter Vander Laan.

**1951 Midsummer Conference**—Grand Hotel, Mackinac Island, August 2-5, 1951—Carl J. Rudine, Chairman.

**38th Annual Convention**—Hotel Statler, Detroit, March 5-8, 1952—Linn C. Smith, Chairman.

**APELSCOR**—Charles B. McGrew, Linn C. Smith, Alternates; Carl B. Marr, John O. Blair.

**Monthly Bulletin** is also the official publication of the Detroit Chapter of The American Institute of Architects: Eero Saarinen, President; Eugene T. Cleland, Secretary; Paul B. Brown, Treasurer; Thomas H. Hewlett, Suren Pilafian, L. Robert Blakeslee, David H. Williams, Jr., Directors.

**Theodore G. Seemeyer, Jr.**, Advertising Director, 120 Madison Avenue, Detroit 26, Michigan. Telephone WOodward 5-3680.

Entered as second-class matter Jan. 15, 1946 at the Post Office at Detroit, Mich., under Act of March 3 1879. Published monthly. Subscription price \$3.00 per year (members \$2). 30c per copy (Special numbers \$1).

## This Month THE REASON FOR THE PLACE CARD

Membership in the Detroit Chapter of The American Institute of Architects has increased in recent years to such an extent that it is no longer easy for members to know one another intimately. Yet, this is one of the objectives of such an organization.

Different methods of acquainting members with each other were considered—a reception or greeting committee to introduce them, badges to be worn by each member, or having each one arise and introduce himself. None of these seemed to be suitable.

Then it was thought that if place cards are good for the speakers' table, why not for all members? Naturally, it would be difficult to place the cards on the table for every one, as considerable confusion would result when some 100 or so went about looking for their cards. So, the answer seemed to be to give each his place card as he secured his dinner ticket and let him place it in front of him wherever he sits. This enables members to form their own groups and sit with friends.

Moreover, it was only natural that a double card, instead of single, be used,

## MICHIGANDERS AT THE A. I. A. CONVENTION

Thirty-four architects from Michigan attended the 83rd Annual Convention of The American Institute of Architects in Chicago, May 8-11. In addition, there were 18 ladies.

Institute members attending were Messrs. Atwood, Wells Bennett, Kenneth Black, Blakeslee, Brigham, Chesnow, Christenson, George Diehl, Ditchy, Dow, Frantz, Fry, Gould, Hammett, Harley, T. C. Hughes, Paul Kasurin, Kolm, Leinweber, Manson, Marshall, Moss, O'Bryon, Opdyke, Pettibone, Plank, Redstone, Rindge, Rush, Sanders, Spence, Stanton, Stone, Taylor, Bulthuis, Lattin, Newlander, Pratt, and Sprau.

Of particular interest to the delegation was the re-election of Clair W. Ditchy as Secretary, and the Award of Merit to Giffels & Vallet, Inc., L. Rossetti Associate, for their Veterans Hospital at Fort Wayne, Ind. A. N. Strauss, of Fort Wayne, was Associate Architect. Our former member, Maynard Lyndon, was awarded first prize in the residential class for his own house at Malibu, Calif.

Detroit Steel Products Co. received an award in the Products Literature contest. John C. Thornton, A.I.A., was on the jury.

At the preconvention meeting of the National Council of Architectural Registration Boards, a resolution expressing sorrow and deep sense of loss at the passing of Andrew R. Morison, long active on the Council, was passed.

Charles Luckman, who was the prin-

ciple speaker at our last Michigan Society of Architects convention, appeared on the program of the Producers Council.

Among those elevated to fellowship was our former member, Rowland A. Wank. Maurice J. Sullivan, who was elected Treasurer, was also made a fellow. He is a brother of our late member, Charles Sullivan.

At the closing session of the convention, President Walker read a telegram from Leo M. Bauer, President of the Michigan Society of Architects, concerning Senate Bill 330, believed to be not in the best public interest for the State of Michigan. He urged all Michigan architects in attendance at the national convention to appear for a hearing at the State Capitol at Lansing on Tuesday morning, May 15.

It's surprising how many architects throughout the United States have come under Detroit's influence—in the offices of Albert Kahn; Smith, Hinchman & Grylls, G. & V., H., E. & D., and other large offices.

enabling it to be read from both sides of the table. Also, to be most useful, the type should be readable from some distance. At first we began to have them printed, but this method did not lend itself to filling in names of those who came without reservations. So, the typewriter with large type was decided upon as most flexible. The place cards are made up from the post cards sent in for reservations, and the portable typewriter is taken to the dinner to take care of the few who do not make reservations.

Cards are collected after the dinner and used again, except in cases where

members desire to take the cards with them. We are glad to have them do this, as the making of new ones is so easy. If any one wants to take the place card to put on his desk, like a vice-president, or as a souvenir, he is welcome to do so. We will simply make another and soon will have a complete file, which will only need filling in of guests and those who come infrequently.

There are many members whom we do not see often enough. There are many whose faces we know and we should remember their names, but we don't. It is hoped that this system will remedy this defect.

5" x 6" card, is folded to 5" x 3", forming a double "easel." Name is typed in black, other printing is red, as well as reverse side of card. Face of card is white, enamel finish.

*Detroit*



*Chapter*

EERO SAARINEN

*The American Institute of Architects*



**SPECIALIZED SERVICES**  
*for*  
**ARCHITECTS**

**DUNN  
BLUE PRINT  
CO.**

**MAIN OFFICE**  
**5920 SECOND-TR. 5-2125**

**EAST SIDE    WEST SIDE**  
**17110 BRADFORD    18019 JAS. COUZENS**  
**VE. 9-3900    UN. 1-5512**

woodward 3-7418

woodward 3-0813

**Ray T. Lyons Co.**

2457 Woodward Avenue, Detroit, Michigan

**Distributors**

LUDMAN Auto-Lok Aluminum Windows  
 MIAMI Medicine Cabinets, Mirrors & Acces.  
 BROAN Ventilating Fans & Electric Heaters  
 WASCO Copper Flashings  
 & WASCOLITE Plexiglas Skylights

PENNSYLVANIA, NEW YORK Flagstone  
 VERMONT Colored Slate Roofing & Floors  
 CRAB ORCHARD Tennessee Stone  
 LANNON-WISCONSIN Veneer Stone  
 "Our 22nd Year"

VE. 8-0660

**WALTER L. COUSE & Co.****GENERAL BUILDERS**

12740 LYNDON AVE., DETROIT 27

**R. D. THAYER COMPANY****WATERPROOFING CONTRACTORS AND ENGINEERS**

2701 JOY ROAD  
 DETROIT 6, MICH.  
 TYler 6-9626

**COMPLETE WATERPROOFING SERVICE**  
*For The Preservation of Your Structure*

**WORKING IN COOPERATION WITH**  
**LEADING WATERPROOFING MANUFACTURERS**

842 HALL ST., S. E.  
 GRAND RAPIDS 7  
 Phone: G. R. 5-5180

**SHEET METAL  
VENTILATING****AIR CONDITIONING**

WE 3-7494-5-6

**M. DEN BRAVEN CO.**

9080 ALPINE AVENUE  
 DETROIT 4, MICHIGAN

**Koenig Coal & Supply Co.**

SINCE 1870

**READY - MIXED CONCRETE — FUEL OIL — COAL**

Main Office: 1486 Gratiot Avenue, Detroit 7

WO. 1-1584





## MEETING IN MEMORY OF ANDREW R. MORISON

On the evening of May 4, 1951, members of the Detroit Chapter of The American Institute of Architects gathered at the Rackham Memorial Building in Detroit to pay tribute to the memory of one who had made a deep impression upon our lives—Andrew R. Morison.

Eero Saarinen, who succeeded to the Chapter Presidency, conducted the meeting, and opened it with a few beautiful words about the departed. He stated that he liked to look upon his life as a totality, rather than as we look upon our own lives. Eero read telegrams from the Board of Directors of The American Institute of Architects, from Clair W. Ditchy, Institute Secretary, and from John N. Richards, our Regional Director. He also read resolutions passed by the Board of the Detroit Chapter, A.I.A., and the Michigan Society of Architects.

Eero then called upon Talmage C. Hughes, who gave a biographical sketch of Mr. Morison, Amedeo Leone, "Mr. Morison's Work at Smith, Hinchman & Grylls," Dean Wells I. Bennett, "Mr. Morison's Work on the State Registration Board," Howard P. Seelye, "Mr. Morison's Work on APELSCOR," and Leo M. Bauer (President of MSA), "Mr. Morison as an Architect."

### MR. HUGHES' SKETCH

Andrew Morison was born on May 15, 1889 in Kilmarnock, Scotland, where he received his early education and apprenticeship. He later studied at technical college and Glasgow School of Architecture, the second school outside of France to adopt the Beaux Arts system.

When he came to Canada in 1909 and was employed in the office of W. S. Painter, he continued his studies at Atelier Maxwell in Montreal. At that time, the firm had the commission to design the large stations and hotels for the Canadian Pacific Railway. Mr. Painter because associated with Frances Swales, resulting in the broadening of their field of activity and the opening of branch offices. Andrew Morison was put in charge of work at Lake Louise in the Canadian Rockies, where he handled several extensive hotel additions and alteration projects, as well as camps, bridges, etc. for the Canadian Government.

He spent the year 1913 in Europe, then returned to Canada to enter the office of Ross & McDonald, from which he transferred to the staff of the Toronto Terminal Architects (Ross & McDonald, Hugh G. Jones and John M. Lile). He came to Detroit in 1916 and entered the office of Smith, Hinchman & Grylls. It was there that I first met him, and from the beginning I realized that he was no ordinary person. His character and ability marked him as one whose influence would be felt in the world.

First elected treasurer of the Michigan Society of Architects in 1928, he was re-elected each year until 1936. During that period, the Weekly Bulletin carried on its masthead the words of Theodore Roosevelt, "every man owes a portion of his time to the up-building of the profession or business

of which he is a part." I think that to most of us Andrew Morison was the inspiration for that quotation. During these years he worked diligently and, as is often the case with treasurers, he was behind the scenes, carrying on in an unspectacular way. But the Society prospered and in recognition of his contributions he was elected president in 1936 and again in 1937. During his administration he forged one of the most important links in the Society's chain of progress to become one of the outstanding architectural organizations of the country.

Kenneth C. Black states, "you will probably recall that I succeeded Andy as president of the Michigan Society of Architects back in the days when it was difficult to create very much enthusiasm for the organization. Andy probably did as much as anybody to enlist the interest and support of the architects outside the Detroit area, and the success we later achieved would have been much more difficult without the groundwork done during his administration and leadership."

And so it was natural that the Society should take the leadership in attaining the highest percentage of membership to architects registered in the State. Other states followed and then the Institute recognized the fact that it should truly represent a majority of practitioners in the country.

Andrew Morison's contributions to the cause of registration, through his 14 years on our State Board, were invaluable. My connections with the National Council of Architectural Registration Boards enabled me to realize that his influence far transcended state lines. There had existed a lack of understanding between state boards until, at Andrew Morison's invitation, the National Council Board came to Michigan and met jointly with our State Board, at the Society's Midsummer Conference on Mackinac Island in 1949. Other state boards did likewise and today architects of the nation are benefitted by reciprocity and NCARB registration.

Leon Snyder, Jr., A.I.A., of Battle Creek, Michigan, writes, "It is with deep regret that I inform you that it will be impossible for me to attend the meeting honoring the memory of the late beloved Andrew R. Morison. I am writing to ask that, if at all possible, you be my voice at this meeting by reading the enclosure, that those present may know that we who live at some distance have been greatly shocked and feel that the profession has lost a really fine man and architect who was regarded with the greatest respect.

"When the course of events seemed

to make the road of architecture too difficult to travel, his assuring presence and friendly smile gave that added strength to a shaken faith. He gave in strength of mind and of his time and physical self to further the ethical foundations and build the superstructure of his chosen profession. He lent a quiet dignity to any gathering of his colleagues and was the first to lead and pioneer that others might gain from his experience and follow in a worthy footsteps.

"He gave generously of his time to contribute to the development of the uninitiated, always being tolerant and giving inspiration by sketching a picture of soundness, balance and beauty, placing the perfection of his profession above monetary gain.

"He has built and left monuments in steel and stone to be remembered but, above all, he will leave a lasting memory in the hearts of all who knew him, for his fairness, understanding, sense of humor and tolerance for all his fellow men."

Andy's resourcefulness is illustrated by his work during the depression, when he devised and produced himself articles that found ready sale in the market places. It was in the early 30s that I worked with him on HOLC rehabilitation, and again we worked together during World War II on the Government's housing conversion program. I understood then the high regard in which he was held by those agencies.

In the words of Harry L. Mead, of Grand Rapids, "To have lived an active life for so many years and earned and kept the universal respect and friendship of his acquaintances and contemporaries is the accomplishment of a worthy man, indicating a fair and just mind and a sense of responsibility to his profession as well as to those about him. Such was the character of our late friend Andrew R. Morison, who was always willing to do a good turn. He was a tireless worker. We shall miss him. May he rest in peace."

In his tenure of office as president of the Detroit Chapter of The American Institute of Architects, in which he was serving his second term, he was rounding out a quarter century of service to his profession. To say that he will be missed are but inadequate words.

E. A. Baumgarth of The Detroit News said, "he was designing a church for a Methodist congregation in Birmingham and he came to my fence where I was working in the garden and we talked over the fence and I am afraid that I kept him away from his architectural duties too long, but in that talk I came to recognize what a splendid person he was."

In honor of our great leader and beloved President, Andrew R. Morison, this meeting is dedicated. In following his example, we will always cherish his memory.

(Continued on Page 9)



## THOMAS - WILSON Co., Inc.

GENERAL CONTRACTORS

FOR

FRANKLIN ELEMENTARY SCHOOL

FRANKLIN, MICHIGAN



14330 MEYERS ROAD

DETROIT 27, MICHIGAN

VERMONT 8-0890

## HALL ENGINEERING CO.

ELECTRICAL CONTRACTORS

ON

BIRMINGHAM HIGH SCHOOL

BIRMINGHAM, MICHIGAN

AND

McLOUTH STEEL CORPORATION

DETROIT, MICHIGAN

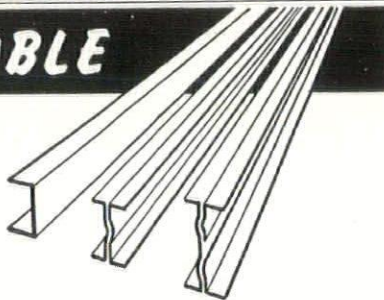
888 West Baltimore Avenue

Detroit 2, Michigan

Trinity 1-8200

**NOW AVAILABLE**

## STRAN STEEL



### NAILABLE JOISTS AND LIGHT BEAMS

Lighter in weight than hot-rolled beams of  
equal depth • Nailable for simple assembly



#### SUGGESTED USES

Light trusses for pitched roofs or  
flat roofs . . . purlins . . . girts . . . interior partition studs . . .  
tool crib framing . . . shelving supports . . . loading platforms . . .  
suspended ceiling framing . . . miscellaneous sheds . . . mezzanine  
floors . . . interior structures within industrial  
buildings . . . drying kilns . . . ventilating system  
framing . . . duct work framing and supports.



### LaSalle Electric & Mill Supply Co.

STEEL FABRICATING DIVISION

6370 E. Davison, Detroit 12

TW. 1-7060

Stran-Steel framing is a building product of Great Lakes Steel Corporation

## ROHN FIREPROOFING CO.

GYPSUM ROOF DECK  
for

TORRY ELEMENTARY  
SCHOOL  
Birmingham, Michigan

— □ —

3000 Grand River Ave.

Detroit 1, Michigan

TE. 1-6122

TE. 1-4966



**MR. LEONE'S PAPER**

In 1916 Detroit was a City of about  $\frac{3}{4}$  of a million people with two established industries; pharmaceutical and stove-making, and the automobile industry was commencing to assume major proportions. The City had grown as far as Boston Boulevard to the North and just beyond West Grand Blvd. to the Northwest. A real estate boom was developing and absorbing available farm lands beyond this area.

The business section of the downtown area was dominated by the Dime Bank Building and the Ford Building. The Statler Hotel had just been completed and the old Pontchartrain was the mecca for the budding automobile industrialists. On Madison Avenue Mr. Kahn's Italian D. A. C. was in the process of completion. Cass, Second and Woodward Avenues above the park were still proud of their trees, although the traffic problem was beginning to be felt.

Detroit with its exciting promises of industrial development was attracting men from all over the country. With this a building boom was in the making to take care of the physical, social and spiritual needs of a fast growing community. Such was the Detroit that Andy found when he arrived here on April 3, 1916 from Buffalo.

In Buffalo he had worked for the firm of Architects, Wood & Bradney for one year. Previous to that he had spent two years with Ross & McDonald at Montreal where he had done considerable work on the Canadian Pacific Development.

In the office of Smith, Hinchman & Grylls, Inc., he found himself in an organization of about 100 people; 60 of whom were structural, mechanical, electrical engineers and architects. An active group of men full of enthusiasm, at time boisterous, they were held in check by the chief slave driver Lew Hoffman. The office occupied the entire 7th floor of the Washington Arcade Building, now taken over by Himel-hochs. The staff worked 44 hours a week and the coffee hour was unknown.

The office was in a changing process—where the work had been in general of an engineering nature, it was now developing more towards definite architectural projects of a commercial, educational, ecclesiastical as well as residential work on occasions.

While with industrial work being done at the time, a freedom of expression was prevalent, tradition prevailed in the other types of buildings. We are effected by trends, and at that time the New York office of McKim, Meade & White; York & Sawyer, Charles Platt, Delano & Aldrich; Cram, Goodue & Ferguson were the leaders in their field. Form did not seem to follow function as easily as it does today. Mr. Wright's soundings were not being heard in this country, but were becoming quite active in Europe.

We were still concerned with craftsmanship, and architecture was custom-built. Goodue's St. Thomas Church in

New York had just been completed and published in architectural magazines as well as the Church of the Intercession in up-town New York. The profession worshipped at these shrines and rightly so. York & Sawyer had completed the Guarantee Trust Building in an Italian manner with beautifully executed details and use of fine materials. The number of the Architectural Review which contained this building became a Bible in most of the offices and many buildings were inspired from it.

The sophisticated town house was exemplified in the Delano & Aldrich work and Mr. Platt's country houses and gardens were the goal to achieve. Incidentally, the Alger House Museum on Lakeshore was of that period.

Being a master builder at heart and lover of craftsmanship, Andy followed these trends. With his friendly disposition it was not long before Andy was accepted whole-heartedly in the organization as a friend and associate, among them being Hi Walton, Bill Zabriskie, Cyril Schley, Paul Ketelhut, Austin Howe, Jim Parson, George Masson, Art Janke, Wallace MacKenzie, Newton Hill, Bill Bruss, George Page, Fred Slagle, Frank Wright, our distinguished Executive Secretary, Talmage Hughes, Ed Giberson, Vern Venman, Fred O'Dell of the University of Michigan, George Diehl, Cy Cox, George McLaughlin, Roger Allen, Bill Kapp, Charles McGrew and others.

From his first assignments, he was very successful and as a job-captain he soon came to the attention of Mr. Smith and Mr. Grylls who took a great liking to him, both for his personality and his accomplishments. On November 1917 when Lew Dvorak left, he was made Chief Draftsman. He was barely 30 years old.

The chief draftsman's job can at times become purely a clerical job with assignments to be given out to job captains, keeping of time slips and going over routine mail. To young Andy this Chief draftsman's assignment provided more of a challenge and he accepted it whole-heartedly. He constantly worked with job captains on their various jobs and went from board to board giving freely of his advice so that all jobs were well coordinated by all departments. Full-size detailing, which was a very important part of that era, came under his jurisdiction and while the designers spent many weary hours developing profiles and mouldings, Andy took keen delight in working out ways and means to carry out most of their ideas.

In his quiet manner he displayed unusual administrative ability as well as resourcefulness. The young men who were starting at the bottom of the ladder, such as blueprint boys and tracers, were greatly helped by his architectural guidance and, whether they stayed on in the office or carried on with their education through the University, most of them are better today for their privilege of having come under his spell.

The John Dodge house on Lakeshore Drive, designed by Bloodgood Tuttle, a Goodhue disciple, became an exciting project for the staff and Andy was quite proud of the set of finished drawings that came out under his supervision and he would show them to any new men coming into the organization so they would know what was expected of them. About the same time very elaborate sketches were made for a preliminary scheme of the Jefferson Avenue Presbyterian Church, which was never executed, and he was deeply inspired by these drawings and delighted to supervise them.

With World War I considerable industrial work developed, particularly the expansion of the Dodge Plant and Ordnance Plant work. In this phase of work his ability to organize and carry out the work under pressure became evident.

To such commercial structures as the Fyfe Building, the Hudson group, the Edison Building on Second Avenue and many Telephone Buildings, he contributed his valuable knowledge of construction and design.

Andy's ambition, always of that pleasant and unobtrusive kind, could have but one result, and in May, 1922 he left our organization with our sincere regret and our best wishes, and ventured out for himself on that successful professional career with which we are all familiar.

Just yesterday in talking to Mr. MacKenzie and Mr. Janke about Andy, I asked them what in their opinion was his outstanding characteristic. Both agreed that his ability to put building materials together in a clean, economical way has had few equals in the office since.

To me, Andy was the Master Builder.

**MR. BAUER'S TRIBUTE**

Mrs. Morison, Members of your Bereaved Family, and Dear Friends:

"You shall know neither the day nor the hour." So it was with Andrew Morison—and so it shall be with each one of us.

This is indeed a most difficult moment for me, and my poor words wither away in the depth of feeling which I am sure, we all experience. There is little that I can add to the encomiums already and justly given in this memorial to our dear departed brother, but I would be remiss in my duty if I did not add my mead of tribute to—Andrew Morison, the Man; the Character; the Architect; the Soul. I feel my total inadequacy of this occasion.

Undoubtedly the greatest tribute that we may pay his memory is that his life and his work form a most distinguished and edifying example to us—the living. He served his God as he served our brotherhood of man, and we, his survivors, may take comfort in these words:

"Oh weary heart, be brave and strong,  
Nor wince beneath the sting;  
Beyond the gates of death there lies



*To Serve You Better*



**Chaffee**  
**ROOFING COMPANY**

formerly  
**LENTZ & CHAFFEE**

**A NEW NAME AND A NEW LOCATION**

**14300 MEYERS ROAD**

**DETROIT 27, MICH.**

**TEexas 4-0303**

**INDUSTRIAL and RESIDENTIAL ROOFING and SHEET METAL WORK**

## **MASTERCRAFT Heat Engineering Co.**

**MECHANICAL CONTRACTORS**

**8560 Linwood Avenue, Detroit 6**

**Tyler 5-1464**

## **O. C. WITTE CO.**

**CHALK BOARDS**

**GLASS — SLATE — PLASTIC — COMPOSITION**

**CORK BOARDS**

**ALL TYPES — TAN, GREEN & SPECIAL COLORS**

**ALUMINUM & STEEL TRIM**

**403 DONOVAN BUILDING, DETROIT 1**

**WOODWARD 2-1001**

## **Aluminum & Architectural Metals Co.**

**Misc. Iron and Ornamental Metal Work**

**Aluminum, Bronze and Stainless Steel**

**Steel Stairs**

**1974 FRANKLIN STREET, DETROIT 7, MICH.**

**LOrain 7-6880**

## **"GUNITE" WALLS ON NEW BIRMINGHAM HIGH SCHOOL**

**BUILT BY**

**HANNA, ZABRISKIE & DARON**

**"GUNITE" Contractors for 29 Years**

**6425 TIREMAN AVENUE**

**DETROIT 4, MICHIGAN**

**TEexas 4-0070**



The sweet eternal spring."

Andrew Morison gave most unstintingly of his time and effort in the advancement of the younger members of the profession, so that they might benefit from his friendly counsel and his wealth of wisdom. It seemed that he had no limit on time for his undertaking. While I knew him well throughout many long years, I knew him as a patient, genial, humble, kindly individual with a heart of gold, and with always a pleasant word for everyone. Just to know him was a great inspiration—and I feel my life is better and richer for his having come this way. I am sure that you, too, believe as I do.

In the many years which he served our State as a member of the Registration Board he witnessed a resurgence and an expansion of our profession in which he had a great part. He loved his calling and he left nothing undone in his effort to make it a better one for all of us.

While Andrew Morison never sought them—honors came to him unending. Aside from his great service to the people of Michigan on the State Registration Board—he was a past president of The Michigan Society of Architects, and at the time of his death, he was president of our Detroit Chapter. He served the Institute, the Society, and the Chapter on various committees and commissions with great fidelity. Yet the honor which I believe he deserved without reservation and to which he was justly entitled, never came—Fellowship in the Institute. With each of you I regret exceedingly that he could not have had this award as his flower of life while he still remained with us. He it was who gave his all to the profession and to the public which he served.

His loss is irreparable. The Michigan Society of Architects is proud to proclaim him a great leader, a soulful man, and while a very humble tribute for one of his sterling worth, in our humility we join his many friends and the Detroit Chapter in offering a living testimonial to his memory.

Perhaps there is no more fitting epitaph that may be written than these words of Bryant:

"So live, that when thy summons comes to join

The innumerable caravan, which moves

To that mysterious realm, where each shall take

His chamber in the silent halls of death

Thou go not, like the quarry slaves at night,

Scourged to his dungeon, but, sustained and soothed

By an unfaltering trust, approach thy grave

Like one who wraps the drapery of his couch

About him, and lies down to pleasant dreams."

Andrew Morison has left us for just a little while, but his work and deeds live forth with us—as truly as we live. And, as his just reward—today he may be marching with the legions of Caesar,

or perhaps—he may be watching with the shepherds at Bethlehem.

"And so the ships go on to their haven under the hill. Oh, for the touch of his vanished hand and the sound of the voice that's stilled."

In memorium to you, our dearly departed, who has sponsored so many of our sons and young men in this great profession of architecture, we bid you adieu.

Our beloved Andrew Morison; may your soul rest in eternal peace.

### ANDREW R. MORISON MEMORIAL SCHOLARSHIP FUND

As of May 18, 1951, the fund had reached the amount of \$1,156, contributed by the following:

Acme Infra Red Co., Victor C. Adler, Charles N. Agree, David M. Anderson, Leo J. Armstrong.

George F. Bahlke, J. Healan Baker, Mr. and Mrs. Wm. Brisson, Builders Association of Metropolitan Detroit, John O. Blair.

N. DeCampbell, O. H. Cartwright, Louis Chesnow, Cyril F. Cox.

George F. Diehl, Mr. and Mrs. David Donaldson, Douglas Electric Co., John G. Drainie.

Lynn W. Fry.

Garden Club, Gardiner, Henry G. Groehn.

Stanley G. Hahn; Harley, Ellington & Day; Herbert S. Hicks, Dr. A. H. Hoppel, Wm. H. Hudson, Clarence Hubbard, Talmage C. Hughes, The Hinchman Corp.

Faye Elizabeth Keyes.

A. Lont.

H. W. Mason, Charles B. McGrew, McRea Heating Appliances, John A. Mercier Brick Co., Michigan Society of Architects, Miss Hilda Miller, J. S. Millie, Alex Morison.

C. William Palmer, C. R. Paton, W. K. Pierpont, Producers Council, Redford Women's Club, Robt. Robertson, Theodore Rogvov, Walter M. Roth, Eero Saarinen, George K. Scrymgeour, Sewell & Schoettley, Mr. and Mrs. John M. Small, Grace Smith, R. L. Spitzley Heating Co., R. D. Sweeney.

The Misses Taylor, Leslie D. Tincknell, Thomas Brick Co., Trowell Construction Co.

R. R. Varani.

Hale Walker, Women's Association, Calvary Presbyterian Church, Mr. and Mrs. Fred Wolfenden, J. M. Worswick Co., Barton D. Wood, Harold R. Wright.

WILFRED C. POLKINGHORNE, of Houghton, was elected Chairman of the Michigan State Board of Registration for Architects, Professional Engineers and Land Surveyors, at its recent annual meeting. Dean Wells I. Bennett was elected Vice-Chairman, and Andrew R. Morison, Secretary. Robert B. Frantz, of Saginaw, is another architect-member. Henry G. Groehn is Executive Secretary.

Appointment of a successor to Mr. Morison, who died on April 26, has not been made.

### NEW AGC MANAGER

George W. Combs has assumed duties as Secretary-Manager of the Michigan Chapter Associated General Contractors of America, Inc., with offices at 127 N. Cedar Street, Lansing. He replaces W. Weldon Allen, of 1430 Sunnyside Ave., Lansing, Michigan, who resigned.



Mr. Combs came to the state AGC organization the first of this year as Assistant Manager. A graduate of Northwestern University Institute of Trade Association Management and an alumnus of the University of Michigan. Mr. Combs was previously employed as Administrative Assistant to Ralph Mac-

Mullen, Secretary-Manager of the Detroit AGC Chapter. He has been in AGC work since 1941.

He was formerly Secretary of the Detroit Trade Association Executives organization, and served with Mr. MacMullen early in the formation of the Detroit Building Employers Labor Relations Council. Mr. Combs has also been active in apprenticeship work, serving as a member of the Carpentry and Bricklaying Joint Apprenticeship Committees, while in Detroit. He was also responsible for carrying out many of the public relations activities of the Detroit AGC Chapter.

During World War II, Mr. Combs served four years with the United States Air Force. He received a direct field commission while serving in the European Theater and holds the Bronze Star Award.

The Michigan Chapter AGC is composed of 32 general building firms engaged in heavy, industrial, institutional, and commercial construction throughout Michigan.

### MIDSUMMER CONFERENCE

Carl J. Rudine, of Grand Rapids, Chairman of the Michigan Society of Architects Annual Midsummer Conference, scheduled at the Grand Hotel on Mackinac Island, August 2-5, 1951, announces that plans are well on the way to completion. He has some unusual events scheduled, most of which will be recreational.

Of course, there will be at least one outstanding speaker, with several others at the business sessions.

It is suggested that architects, Producers, their friends and families make plans now to attend this event, with the possibility of combining it with their vacations. What could be better than a week end at the Grand Hotel, followed by further travels into the excellent vacation facilities of upper Michigan?

Reservations should be made direct with the Grand Hotel, Mackinac Island, Michigan, as soon as possible.



# DARIN & ARMSTRONG, INC.

*General Contractors*

DETROIT 3, MICHIGAN

## underground construction

WATER MAINS  
SEWER TUNNELS  
ELECTRIC CONDUITS

GEORGE A. ODIN INC.

1935 McGraw Ave.  
Detroit 8, Michigan  
TYler 4-0100

*Never before  
a brick  
like this*

Use

# CHEM

The All Purpose Brick

For

RESIDENTIAL  
COMMERCIAL

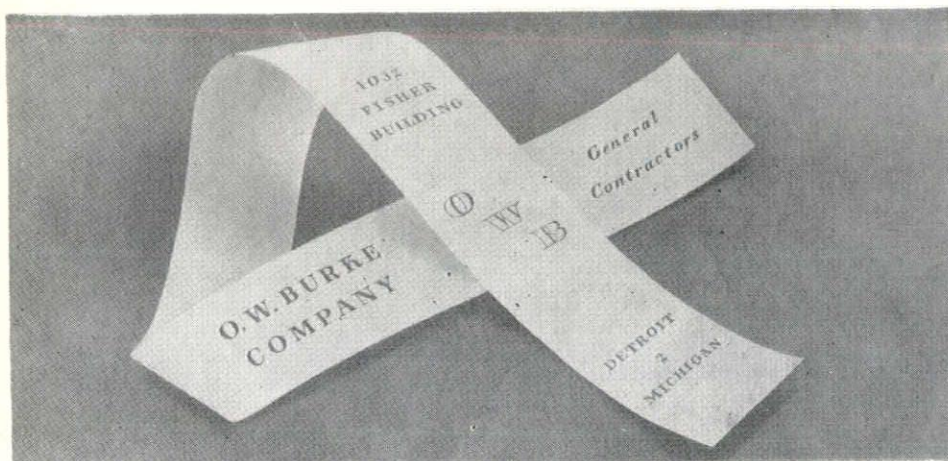
And

INDUSTRIAL  
CONSTRUCTION

## DETROIT BRICK & BLOCK CO.

Foot of St. Jean      Detroit 14  
VA. 2-4879

CHEM BRICK MEETS A.S.T.M.  
SPECIFICATION FOR S.W. BRICK



## EASTERN CABINET WORKS

ARCHITECTURAL WOODWORK—CUSTOM BUILT FURNITURE—STAFF DESIGNING AVAILABLE

LORAIN 7-9515

3456 EAST JEFFERSON AVE.

DETROIT 7, MICHIGAN

COLORFUL OHIO  
SHALE BRICK

# Kurtz Brick Company

FOR RESIDENTIAL  
AND  
COMMERCIAL  
BUILDING

Our Fleet of Diesel Powered Highway Trains Deliver Your Brick Direct from Our Ohio Kilns to Your Job Site  
NO WAITING — NO DELAY — NOT A CHIP IN A CARLOAD

14183 WYOMING, DETROIT 4

WE. 3-2384



# THE STATE OF ARCHITECTURAL DESIGN IN THE UNITED STATES

A Lecture before the Detroit Chapter, A.I.A., April 18, 1951

*Pietro Belluschi, F.A.I.A., Dean of the School of Architecture and Planning, Massachusetts Institute of Technology*

When Mr. Pilafian, some weeks ago asked me to come to your meeting, I expected to speak to you extemporaneously and touch in a very informal way on some of the common problems of our profession, and on the state of architectural design in the United States.

I didn't and still do not want to give you a lecture, but I'd rather like to exchange ideas with you and perhaps dispel some of the confusion which seems to exist as to our direction at the present time.

Mr. Talmage Hughes' repeated requests, for an advance title of the subject and for copies of this address, made me self-conscious to the extent of wanting to put in writing at least the introductory portion of my remarks; so you'll have to bear my reading it to you. It will take the form of questions to which you, the audience, I hope, will participate in exploring the answers.

As I grow older I become increasingly aware of man's limitations and of his many shortcomings. What saves him is his perennial hunger for truth; to its search he enthusiastically dedicates his best efforts.

The fact that truth is an abstraction which he can grasp only in a very limited way seems to discourage him not at all. He lives and fights by the light of certain ideals which are but the reflections of truth as they are given him to see at any particular period of his history.

I will begin, then, by asking the first main question: In what direction is architecture heading today?

Each one of us may have his own answer to this burning question. We may view with alarm, be discouraged, inspired or disgusted, depending on the condition of our spleen, or whether we have an interesting job full of possibilities on our boards. In trying to give an answer, we are also quite conscious of the fact that western civilization is going through a period of deep transformation, and that architecture reflects in many ways the crisis of our time.

In the hesitations and pains of this unhappy age, we have become rather confused even in the statement of our ideals. Our belief in the validity of the old familiar forms has been today all but destroyed; we have become generally disbelieving and, for that reason, we are not quite up to the task of creating new forms of sufficient significance to fill the demands of our community living. Perhaps it is unreasonable to expect them to grow from such an unstable society as ours. The best we can say is that perhaps we are in the process of finding out that architecture is not an intellectual game to be played and enjoyed by the initiated, or by the rich or by the few, that it is not something to put on or take off at will, nor an exercise in cleverness, but it is life itself. Perhaps we are also finding out that architecture, any more than any culture itself, cannot be successfully superimposed from above either by prodding historians or by brilliant theoreticians. Architecture as culture to be valid and lasting and

accepted, must spring from the grass roots; it must be spawned by the economic and social forces peculiar to our society and nourished to spiritual and visual maturity by the practical idealist, such as the common variety of practicing architect may be called.

The lyrical and poetical works of the very few men of genius are needed as a beacon of inspiration, but only what is wrought by the events of life can in the end shape our environment with any degree of significance.

Another question which may well follow the first is: What is happening to so-called modern architecture?

I, for one, believe that it is in the process of shedding some of the programmatic objectivism and academic mannerisms which seemed to be in danger of degenerating, and that again is developing those sympathetic human qualities which all the best architects of the past possessed in large measure, without either giving up the discoveries and the gains which it has achieved in these last thirty years, nor without having to return to the false sentimentalities of the past.

We may observe that good, modern, architects are designing their buildings with a new consciousness that man is the criterion and the main motive, and that man is not a simple cog to be disposed of by a mere symbol, but a highly complicated creature, full of strange emotions and illogical desires, swayed by love and by hatred, both idealist and materialistic, gregarious and misanthropic. So we may detect in our modernism a trend away from the rationalities of the past two decades, and an effort to add our own personal contributions to the complex elements of a warmer and more human environment. We may go as far as to state that today's modernism is no longer a label but a way of life. We are becoming impatient of clichés, we want the essence not the surface of life; what new tools have architects shaped for this new task?

First, I believe they are re-discovering the function of space, and finding that properly organized space can give a visual satisfaction, deeper than that obtained by any other means. Some gifted designers have proved to us that a house is modern, not because of its flat or butterfly-shaped roof, but because of the creative arrangement of its parts, because of the feeling of grace, suspense and eloquence which space can provide. That is particularly true of larger-scale projects, such as community planning, where important

contributions have been made and where abundant proof is offered to the contention that the relationship of units to each other is more important than the exterior wrapping of the units themselves.

I know what the pessimists are saying about the sad present state of our environment and how little it has been improved by such small efforts as have been made to date. But so many changes have occurred in these last decades—so much is still to be digested—that it is unfair to expect quick results in such a tremendous task. I believe that slowly and tentatively we are finding our way among the complexities of a modern world; and we are trying in a limited way to establish visual order from chaos, yet rejecting the intellectual and academic attempts to superimpose artificial patterns to our peculiar way of life; I believe that we are attempting to distill beauty out of the components of the American scene and we are shaping new forms out of the necessities of our machine age; our impatience is great, today we are quite discouraged by Hollywood, the comic books, the advertising posters, and our general bad taste, but, undigested as they are, we may be allowed to speculate on many new possibilities developed by the circumstances of a new society. Beauty itself, which has always been a difficult virtue to define, is slowly revealing itself in unexpected forms, being a subjective experience is always changing and forever eluding possession, yet it is our great motivating ideal and the search for it our greatest source of strength.

A plane in flight, the great suspension bridges, our dams, the network of highways, the few but very exciting attempts to make community living again an integrated experience—these are new aspects of beauty more significant, certainly more convincing to us than the old classic styles could be to us or even to our fathers.

At this point we may pause and wonder how much optimism can we afford for one evening without pointing out the dangers ahead:

Are we thinking in a wishful way of our possibilities? Are we really up to the task of bringing about our own salvation? Has democracy, in its slow self-defeated way, taken from us the means to plan in a larger scale for a happier society? Is our capitalistic system capable of building anything else but what promises to give a return on the dollar? Do we have to go through more wars and destruction in order



*Specializing Exclusively in*  
**Builders Hardware**

Architect Approved Hardware

**RUSSWIN**

Contractor Approved Service

**Russell A. McBride**

Architectural Hardware Consultant, with thirty years experience will gladly give his personal attention to your hardware requirements. Complete estimates and personal supervision of all jobs.

**Russell Hardware Co.**

"The Builders' Hardware Store"

165 Pierce St. Birmingham, Mich.  
 Midwest 4-0100

**GREEN "EZY-RASE" NUCITE CHALKBOARDS**

Over 100 Installations in Michigan During the Past 10 Years  
 Has Proven the Quality of This Material

ALUMINUM FRAMING & CORK BULLETIN BOARDS

on

Torry Elementary School, Birmingham, Michigan  
 Franklin Elementary School, Franklin, Michigan

**PENINSULAR SLATE CO.**

Michigan Representative New York Silicate Book Slate Co.

712 Amsterdam Avenue Office and Warehouse TR. 5-4301 Detroit 2, Michigan

GLUE LAMINATED BEAMS AND COLUMNS

FOR

FLYNN MEMORIAL BUILDING  
 BELLE ISLE, DETROIT, MICHIGAN

Furnished by

**NOBLE CARR**

UNIT STRUCTURES, INC.

616 Farwell Building, Detroit 26, Mich.

WO. 2-5924

WOOD TRUSSES TECO-CONNECTOR BUILT & LAMINATED ARCHES

HOSPITALS

SCHOOLS

WE ARE ESPECIALLY PROUD  
 TO HAVE BEEN SELECTED  
 AS THE  
 GENERAL CONTRACTOR  
 FOR THE  
 FIRST BAPTIST CHURCH  
 OF  
 FLINT, MICHIGAN

FOR  
 SWANSON ASSOCIATES  
 BLOOMFIELD HILLS, MICHIGAN

**SORENSEN - GROSS  
 CONSTRUCTION CO.**

2505 LAPEER STREET, FLINT, MICHIGAN  
 FLINT 4-5688

CHURCHES

COM. & INDUST'L

*for over 61 years*

MICHIGAN ARCHITECTS

HAVE BUILT FOR

*Beauty and Permanence*

WITH

*Bay Port Stone*

USED ON THE  
 FLYNN MEMORIAL BUILDING  
 BELLE ISLE, DETROIT, MICHIGAN

**THE WALLACE STONE COMPANY**

(51ST ANNIVERSARY)

BAY PORT, MICHIGAN

Bay Port Stone—Hardest Limestone Known



to hope for the reconstruction and rehabilitation of our cities?

These are all open questions to which you may give your own answers.

But it can certainly happen that our great potentialities may never come to fruition—that the great vitality, so apparent in every phase of American life, may fail to mature into a civilization worth being remembered—that our search for material things may, in the end, wither our desire for higher, more satisfying and more enduring accomplishments. The dangers are there, obvious and visible—it may be well not to ignore them.

I feel that we architects and, in particular, we the common working variety who are front-line men, who must face frustration and compromise in our dealing with the people as clients and who must understand, absorb, and give visual form to so many of the forces which make our world move, have a prime responsibility to bring general order into our confused environment is a complex task to be performed by many people working with a common purpose and not by a few stars performing dramatic and sporadic feats. Each one of us can do his best, not ashamed to listen nor to understand what lives around us, ever mindful that each one of us can give more in a creative way by being a part of the great mass of people, sharing their loves and enthusiasms, guiding them in the realization of their ideals.

It seems completely immodest at this point to show you some colored slides of work done by my office on the Pacific Coast—but beliefs and opinions expressed only in words cannot carry the same weight that deeds do. My own faults and compromises are here for you to see and judge by.

With few exceptions, these slides represent work done in recent years—some still under construction.

I hope that, if not too late, you may be moved by my statements, and by the graphic presentation of my beliefs, to answer some of the questions which I have posed to you, and to present new ones for discussion.

#### BULLETIN:

We have just received our copy of the Monthly Bulletin for May 1951 and wish to express our approval of and appreciation for the continuing improvement which we have noted in your publication in recent months. Of all the state architectural journals regularly coming to our attention, the Bulletin has become the finest.

In our opinion each issue of the Bulletin since October last is evidence of the wisdom of your decision to publish monthly instead of weekly as theretofore. The new format and greatly improved editorial content have made the Bulletin a welcome and valued addition to our magazine library.

Congratulations.

Helen Bunch,  
Albert Kahn Associated Architects and Engineers, Inc.

## FRANK LLOYD WRIGHT SPEAKER IN DETROIT

FRANK LLOYD WRIGHT spoke at the Music Hall in Detroit on the evening of Monday, May 14, under auspices of the Architectural Club, Student Branch, A.I.A., of Lawrence Institute of Technology.

He and Mrs. Wright were on their way to New York, to sail for Italy to open an exhibition of his work to be shown in five European countries. The 2300-seat theatre was filled to capacity.

At a dinner preceding the lecture, Mr. Wright stated that the exhibition's 10,000 square feet weighed 30,000 pounds. Asked if it would be shown in America later, he said, "not if I can prevent it."

When the Institute Convention was mentioned, he said, "I understand they gave the Medal to a man named Maybeck. I wonder what that makes the Medal worth."

He was reminded that Philadelphia

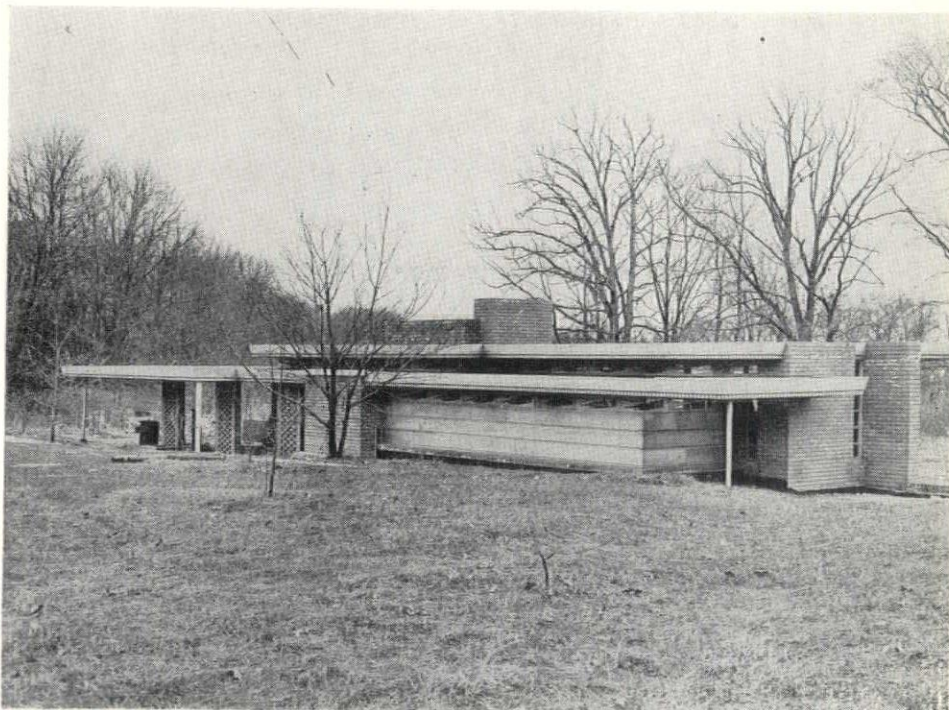
papers recently quoted him as saying that the reason he was wearing the British Medal was because it was the only one that had a ribbon. He denied this, saying it was just newspaper rubbish. The real reason, he said, was because the British Medal is the only one that means anything.

While in Detroit, Mr. and Mrs. Wright visited the Bloomfield home of Mr. and Mrs. George Affleck, which Mr. Wright designed. They were also at the home of Mr. and Mrs. Maxwell Smith in Bloomfield Hills, Mr. Wright's latest job in the Detroit area.

Shown below is the Smith house while under construction.



MR. WRIGHT



### Overlooked Opportunity To Serve?

SPECIFY ALUMINUM  
COMBINATION DOORS AND  
WINDOWS BY KAUFMANN

Write for complete information

**KAUFMANN CORPORATION**

TWinbrook 3-2000

17210 GABLE

DETROIT 12, MICHIGAN



# A. W. Kutsche & Co.

BUILDING CONSTRUCTION



TRinity 1-8410

2924 West Grand Blvd.

Detroit 2, Michigan

## FACE AND GLAZED BRICK

Of Every Kind and for Every Purpose

## STRUCTURAL FACING TILE

Ceramic Color Glazes — More than fifty colors and in all sizes.  
Clear Glazes - Salt Glazes - Unglazed - Various Colors and Sizes

## SPECIAL INDUSTRIAL FACING TILE

Glazed and Unglazed

ANTI-HYDRO — Concrete Waterproofing and Floor Hardened

FREDERIC B. **STEVENS** INCORPORATED

1800 - 18TH ST.

Detroit 16, Mich.

TAshmoo 5-0725

# H. H. DICKINSON CO.



Complete  
Builders'  
Supplies



## OFFICE:

5785 Hamilton Avenue

## WAREHOUSE:

9940 Roselawn Avenue

## PHONE:

TRinity 5-4950

## POST OFFICE BOX:

218 Detroit 2, Michigan

Underwriters Laboratories  
Inspected, Fire Resistive

## VAULT DOORS

Built to S.M.N.A. Specifications

## HOLLOW METAL DOORS

SAFES, MONEY CHESTS

And

## BANK VAULTS

**Diebold**  
INCORPORATED

4105 CASS AVE., DETROIT 1

TEmples 3-4477

# MURRAY W. SALES & CO.

W H O L E S A L E

## PLUMBING AND HEATING SUPPLIES

801 W. Baltimore Avenue, Detroit 2, Michigan, TRinity 5-4200

FLINT

WYANDOTTE

PONTIAC

*For over half a century Detroit's quality roofer*

**Robert Hutton & Co. Inc.**

ROOFING AND SHEET METAL CONTRACTORS

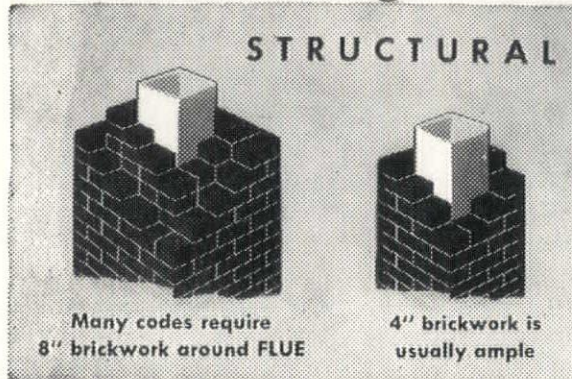
622 FORT ST. E. • DETROIT 26 • WOODWARD 2-1073

JOHNS-MANVILLE PRODUCTS

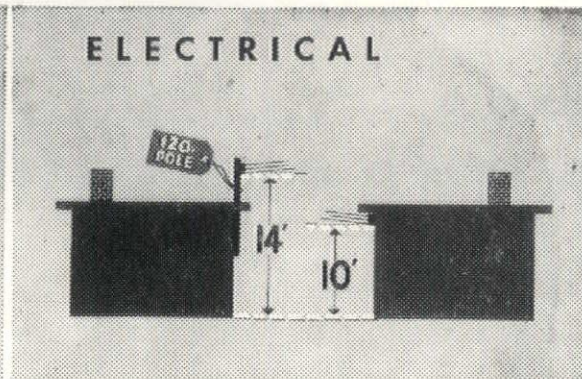


*Buyers Would Benefit:*

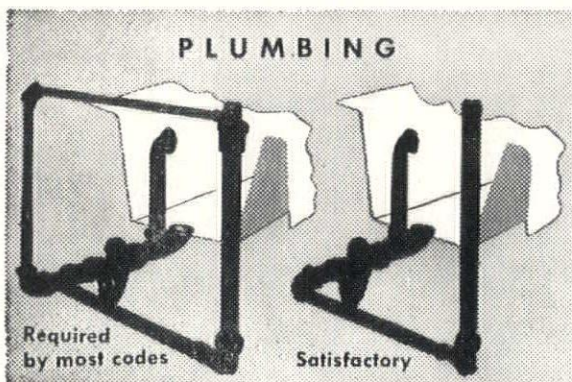
## *Builders Urge Better Codes*



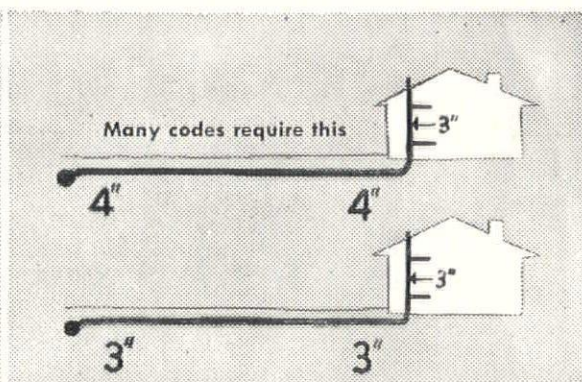
New home costs can be lowered in many instances, says the National Association of Home Builders, if cities will revise excessive, wasteful building codes. NAHB cites chimneys as an example. Many codes require 8" brickwork around flues, while national safety standards say 4" brickwork is ample in nearly all cases.



Here is a specific example where \$20 could be easily saved. Left, most codes require a pole attached to the side of the home for electrical wiring attachment purposes. Right, the wiring could come directly to the box on the side of the house, ten feet above ground, eliminating the pole.



Too many codes require unnecessary bathroom vent pipes, such as the above example, at left. Such codes require extra labor and material that serves no useful purpose, but buyer pays.



Many codes also require larger and longer drainage lines than necessary. A change from a four inch to a three inch house sewer pipe would save 160 pounds of vital cast iron in the average home.



VISIT OUR SHOWROOM

- SHOWER DOORS
- TUB ENCLOSURES

*In the*  
J. LAFAYETTE COTE' RESIDENCE

WERE CUSTOM-BUILT AND INSTALLED BY

### NATIONAL

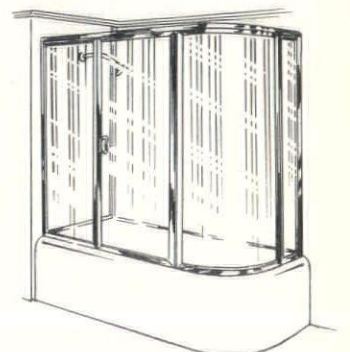
MICHIGAN'S LARGEST MANUFACTURER OF GLASS SHOWER CLOSURES . . . DEVOTED EXCLUSIVELY TO THIS WORK, PROFESSIONAL ENGINEERING SERVICE AVAILABLE WITHOUT OBLIGATION.

## NATIONAL SHOWER EQUIPMENT MFG. CO.

832 ABBOTT STREET

PHONE WO. 5-4410

DETROIT 26, MICHIGAN





## MUNRO AIRD

ESTABLISHED 1922

LATHING & PLASTERING  
CONTRACTORS

ON

McLOUTH STEEL CORPORATION  
OFFICE BUILDING

1274 West Forest Avenue  
Detroit 1, Michigan  
TE. 1-8667

## ST. CLAIR SALES CO.

ALUMINUM DISPLAY CASES

furnished for  
TORRY ELEMENTARY SCHOOL  
BIRMINGHAM, MICHIGAN

Fabricators of Aluminum Letters  
and Specialty Items

4145 CASS AVE., DETROIT 1

TE. 1-4145

GLASS & GLAZING

ON

TORRY ELEMENTARY SCHOOL  
BIRMINGHAM, MICHIGAN

McLOUTH STEEL CORPORATION  
DETROIT, MICHIGAN

## WEST DETROIT GLASS CO.

5815 W. Jefferson Ave., Detroit 9  
VI. 1-7000

## Crawford Door Sales Company

COMMERCIAL & RESIDENTIAL DOORS  
ELECTRIC OPERATORS — PUSHBUTTON, MANUAL OR RADIO CONTROLS

OVERHEAD DOOR FOR McLOUTH STEEL CORPORATION BUILDING  
MIDGET SLAT SHUTTERS FOR BIRMINGHAM HIGH SCHOOL

4651 BEAUFIT, Detroit 7, Michigan

WAlnut 4-9300

## DETROIT ACOUSTICAL CONTRACTING CO.

DISTRIBUTORS FOR  
Armstrong Cork Co.  
Kelley Island Lime Transport Co.  
Certain-teed Products Co.

5050 JOY ROAD, DETROIT 4

TE. 4-7870

## WHITCOMB-BAUER FLOORING, INC.

WOODFLOOR ENGINEERS  
HARDWOOD FLOORING  
MASTIC SET — NAILED  
COMPLETE INSTALLATIONS

Office and Warehouse  
10301 Lyndon at Griggs, Detroit 21  
WEbster 3-4320

IRONBOUND HARD MAPLE FLOORING



## SOCIETY BOARD MET IN G.R.

The Board of Directors of the Michigan Society of Architects met at the Peninsular Club in Grand Rapids on May 2, 1951.

All officers and directors were present except Alden Dow, who was in Texas and Carl Rudine, who was on vacation. President Leo M. Bauer presided.

Before entering upon the business of the Society, a moment of silence was observed in memory of Andrew R. Morison, the Society's Past President, whose untimely passing occurred on April 26.

The Board approved the continuance of the Bulletin as a monthly, and instructed James A. Spence, Chairman of its Administrative Committee that "a separate corporation be formed which shall own and be responsible for the Monthly Bulletin in conformity with legal council which shall be obtained."

Ralph W. Hammett reported for the Committee on Education and Research that the Wayne County Board of Supervisors may adopt the Abridged edition of the Basic Building Code. The Secretary was instructed to inform Mr. Joseph P. Wolff, Commissioner of Buildings and Safety Engineering, City of Detroit, that the Society has approved these codes. Steps were taken looking toward the adoption of a State Building Code.

Charles B. McGrew reported that the proposed brochure containing a statement of architects services and schedule of recommended minimum fees, entitled "Organizing to Build," as published in our March issue, was in its final form and ready to go to the printer. This document will be sent to a master list of prospective clients and single copies will be sent members of the Society. Additional copies will be offered for sale at a nominal price to cover the cost of production.

Senate Bill 330 was again discussed and members will hear more about this later, in addition to the many letters and telegrams they have already received on this subject.

A successor to Andrew Morison as a member of the State Registration Board was discussed and the names of three were approved for recommendation to the Governor.

Contribution of \$150 by the Society to the Andrew R. Morison Memorial Scholarship Fund was approved.

Final amended report of the 1951 Convention Committee was rendered by Chairman Sol King, and his recommendations passed on to Linn C. Smith, named Chairman for the next Convention, which is to be held in Detroit March 5 - 8, 1952.

In the absence of Mr. Rudine, Chairman of the Midsummer Conference at the Grand Hotel on Mackinac Island, August 2 - 5, 1951, Talmage Hughes reported that plans are well on the way to completion.

Charles B. McGrew submitted a resolution of sorrow, expressing the deep sense of loss at the passing of Andrew

Morison, which was passed.

Treasurer Blair submitted his report and was given a vote of thanks. The financial affairs of the treasury are in better position than ever before.

The Board accepted the invitation of Alden Dow to hold its next meeting at the Dow home in Midland on June 6.

## TWIN CITY ARCHITECTS

The architectural practice of the late Robert V. Knox, is being continued by three men in St. Joseph, Michigan. They are William N. Setterberg, A.I.A., Donald J. McGrath and A. A. Jack-



SETTERBERG JACOBOWSKI McGRATH

obowski. It will bear the name of the well-known architect who died in London late last year, while enroute to Rome on a Holy Year pilgrimage.

William Setterberg is a member of the Western Michigan Chapter, A.I.A., and an instructor in engineering and dean of men at the junior college of Benton Harbor. He will continue his teaching. A native of Chicago, he is a graduate of the Illinois Institute of Technology, and has done graduate work at the University of Michigan, the University of Chicago and at Texas A. & M. McGrath is a native of St. Joseph and a graduate of Notre Dame. He had been in the Knox office for three and a half years.

Jackobowski received his degree of bachelor of science in architecture from Illinois Institute of Technology.

CENTURY BRICK COMPANY announces the appointment of K. W. (Pat) Shingledecker as Sales Manager. A native Detroiter, he has been connected with the building industry for the past twelve years, with some time out spent in the Armed Service. More recently, he had been associated with Detroit Brick and Block Co.

Century has become distributor for Pittsburgh Corning glass block, the addition of which enables the company to render a more complete service to architects and the industry.

Sam Burtman, Manager, has had 31 years experience in the brick business, 17 years of which have been with Century.

BREITMEYERS, INC., 106 With-  
erell St., Detroit, invites you to in-  
spect some objects of art for sale, in-  
cluding beautiful Italian marble  
tables and wrought iron gates.

## STATURE OF THE PROFESSIONAL ENGINEER

Being Excerpts from an Address

(By Dean Clement J. Freund of the University of Detroit College of Engineering . . . delivered at meeting of the Saginaw Valley Chapter of the Michigan Society of Professional Engineers.)

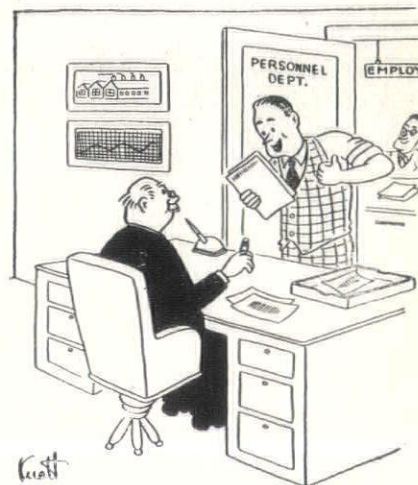
It is fair to say that most engineers never think about professional standing. If the question is brought to their attention, they toss it off as unimportant. On the other hand, a very few engineers, probably the best of them, do think, and think hard, about professional standing.

All engineers want to be known as professional men. But are we sure that we know just what a professional man is? What constitutes professional standing? How do we distinguish the engineer who is professional from the engineer who is not professional?

The professional man, in the opinion of authorities, is such to the extent that he is motivated by a desire to serve his fellow men; and an engineer is not professional to the extent that he has no interest in his fellow men.

An engineer may become the world's authority in reinforced concrete or in the metallurgy of alloy steel, or in jet engines, or in the refining of petroleum, or in aerodynamics, but he will never become professional if he has no concern for the well-being of the community.

In my own view, the most important item in the professional engineer's relation to his fellow men is keen sense of right and wrong. The engineer's understanding of science and applied science gives him control over the life and death of his fellows. The atomic bomb is an obvious example. When anybody had that much power over his fellows, it is of tremendous consequence that he shall possess a sensitive moral judgment.



"According to his aptitude tests  
this guy should have your  
job, boss."



# THOMAS BRICK & TILE COMPANY

*Established 1896*



Telephone  
TOWNSEND 8-1354

FACE BRICK — GLAZED BRICK — PAVING BRICK — ACID BRICK  
REFRACTORY BRICK & CEMENTS  
CUPPLES ALUMINUM WINDOWS — WARE ALUMINUM WINDOWS

14360 LIVERNOIS AVENUE  
DETROIT 4, MICHIGAN

## GLANZ & KILLIAN CO.

*Contractors*

PLUMBING — HEATING — VENTILATING

Fire Protection Sprinkler Systems

1761 WEST FOREST AVENUE — DETROIT 8 — TE. 1-7820

## THE RIGHT COMBINATION . . .



The combination of good design, good workmanship and good materials, result in a brick or masonry wall which will give life-long protection from moisture penetration. Properly designed and placed flashings, full head joints and uniform tooled joints combined with HURON MASONRY CEMENT for mortar will give you a job which you can point to with pride throughout the years.



### HURON PORTLAND CEMENT CO.

—General Offices—

FORD BUILDING

DETROIT 26, MICH.

Michigan Plants Located at Muskegon, Alpena, Saginaw, Detroit, Wyandotte

## ARM-GLAZE the E-L-A-S-T-I-C GLAZING COMPOUND

● Specified by leading Architects and Engineers—preferred by Contractors. Easy to apply. Never gets rock-hard. Won't chip, crack or crumble. Provides LASTING protection. Reduces maintenance. A type for every type of sash. Try Armstrong's Arm-glaze!

● SEE OUR CATALOG IN SWEETS . . . also FREE, upon request, use of Sound Slidefilm, "Application of Glazing Materials."

The ARMSTRONG COMPANY  
241 S. Post St., DETROIT, MICHIGAN

## F. H. MARTIN CONSTRUCTION CO.

955 E. JEFFERSON AVE.  
DETROIT 7, MICHIGAN  
WOODWARD 1-4890

ROOFING & SHEET METAL WORK  
NEW ROOF REPAIRS — ASPHALT SHINGLES  
INDUSTRIAL — RESIDENTIAL  
FOR OVER 72 YEARS

*On Top Since '79*  
**J. D. Candler**  
ROOFING COMPANY, INC.  
551 E. VERNOR HWY. • DETROIT  
D. W. CANDLER • DR. C. L. CANDLER





## SAARINEN NEW PRESIDENT

Upon the passing of Andrew R. Morison, our beloved President of the Detroit Chapter of The American Institute of Architects, Eero Saarinen became President, by reason of his having been elected Vice-President at the Chapter's Annual Meeting and Election of Officers, last October. The Board has not yet elected a new Vice-President to succeed Mr. Saarinen.

Eero has presided at one meeting of the Board and at one dinner meeting of the Chapter. These were on the occasion of the special meeting in memory of our late President, held on May 4, 1951. At that time Eero stated that he felt as Mr. Truman must have felt upon the death of Franklin D. Roosevelt. He was deeply impressed with the responsibility that had devolved upon him and stated that he had an important assignment to fill in following President Morison and trying to carry on the pace he had set.

Our President states that he is going to need a great deal of help, not only from other members of his Board but also from all members of the Detroit Chapter.

We feel sure that this help will be forthcoming.



SAARINEN

## NELSON CO. SHOWS NEW PRODUCT TO ARCHITECTS

On Wednesday evening, the Nelson Company of Detroit, was host to architects, engineers and others at a social hour and dinner at the Detroit Leland Hotel.

The occasion was the showing of a new all-year air conditioner manufactured by Servel, Inc. At the speakers' table were architects Blakeslee, Linn Smith and T. C. Hughes. Representing the Nelson Company were Harry O. Nelson, Norman J. Ermatinger, A. F. Farquhar and William Dixon. Speakers from the Servel Company were J. K. Knighton, John Gilbreath and Paul Kennedy. Also at the speakers' table were engineers S. S. Sanford of the Detroit Edison Co., William J. Hampton of the Michigan Consolidated Gas Co., L. Glenn Shields, Chief of the Bureau of Plumbing, City of Detroit, and C. F. Donahue, President of ASH&VE.

Mr. Ermatinger conducted the meeting, which was most enjoyable and instructive. This new development means that one can have winter heating and humidifying plus summer cooling and dehumidifying from the same unit, and at very reasonable costs. Speakers brought out that heating has more than kept pace with progress in the building industry, and that air conditioning is no longer considered a luxury, but a necessity. In fact, it opens a whole new field of opportunities. In addition to visual displays, units were connected

and in operation.

We appreciate this cooperation on the part of the Nelson Company for we see at such meetings many whom we do not see often enough. It is hoped that they will get the habit and attend our own meetings more often.

J. H. GUSTAV STEFFENS, A.I.A., of Dearborn Michigan, left on Saturday, May 19, to join The American Institute of Architects Spring Trek to Europe, conducted by Harold R. Sleeper, F.A.I.A., and Mrs. Sleeper, of New York City.

The group sailed from New York on May 20, will visit many European countries, over a period of more than five weeks.

Gus has done considerable travel in recent years, since becoming a hotel owner and operator in this area. He has had a most colorful career in the practice of architecture, and, while he is now engaged in other activities, his interest in the profession has never waned.

He is one of the most loyal members of the Detroit Chapter, A.I.A., and of the Michigan Society of Architects.



STEFFENS



"It's these new sliding doors! We have always had swinging doors before."

WESTERN MICHIGAN CHAPTER scheduled its May meeting on the 23rd at the Elks Country Club in Kalamazoo, with Louis C. Kingscott as speaker on the subject "Estimating Building Costs."

According to ARCHITECTONICS, "As you probably know, Louie's jobs never run over his estimated costs. If you want to know how it's done, be sure to attend this meeting. If that doesn't bring out almost a full attendance, this Swede will be very much surprised."

The Chapter's Annual Summer Outing is scheduled for Saturday, June 23, at the Macatawa Hotel in Holland. A stimulating program has been arranged for the afternoon and evening. Hotel accommodations are ample for an overnight stay.

## EXHIBIT BRITISH PLANNING

An exhibition of "Town and Country Planning in Great Britain" has opened at the Detroit Institute of Arts and will continue to June 1.

It is co-sponsored by Future Detroit, Inc., and the Detroit chapter of the American Institute of Architects.

The exhibition, described as one of the most interesting and attractive exhibits in recent years in this field, was prepared by the Ministry of Town and Country Planning in Great Britain. This agency operates under the highly progressive post-war legislation which controls most of the current rebuilding in Great Britain.

The exhibition, on a nation-wide tour, contains 24 panels. Subjects include, Problems of War Damage, Zoning, Street and Office Blocks, Light Industries and Warehouses, Administrative and Cultural Center, The Middlesbrough Plan, the City of Manchester Plan, the Country of London Plan and Hyde Park Corner.

The exhibition is sponsored by the Detroit Chapter, A.I.A., Future Detroit, Inc., and the Detroit Institute of Arts.

MISS MARGARET BEALE is the new head of the Fine Arts Department at the Detroit Public Library. She was formerly Architectural Librarian at Massachusetts Institute of Technology.

On Monday afternoon, April 16, members of the Founders Society of the Detroit Institute of Arts, and the Institute's Library Committee were privileged to meet her at a tea in the Reference Library at the Institute.

While there attendants were shown the gifts received by the D.I.A. Library during the past year. They included the Albert Kahn books, numbering 312 volumes and valued at \$2600; the William B. Stratton books, numbering 445 volumes and valued at \$2300. There is also a 60-volume gift from Alpheus Chittenden.

REGISTERED ARCHITECT wanted for position in charge of contracts and specifications with Conservation Department, at Lansing, Mich. \$450-\$545. Paid vacation, sick leave and other benefits. Write F. Andrew Bell, Chief, Recruiting and Placement Section, Civil Service Commission, 220 N. Grand, Lansing, Mich.

VOGEL, FORTNEY, KALLMES & ZANNOTH is the name of a new architectural firm composed of Charles J. Vogel, Ralph B. Fortney, John J. Kallmes and George G. Zannoth, at 806 Park Avenue Building, Detroit 26, Michigan. The telephone numbers are Woodward 1-3060 and Woodward 3-7712. All are members of The American Institute of Architects and its Detroit Chapter.



## GIBRALTAR FLOORS, INC.

•  
TILE  
AND  
TERRAZZO  
WORK  
ON

BIRMINGHAM  
HIGH SCHOOL AND  
NATIONAL BANK

•  
48 WEST STATE FAIR AVE.  
FOREST 6-0100  
DETROIT 3, MICH.

FACE BRICK  
for  
RECEIVING HOSPITAL  
DETROIT

## HANLEY COMPANY

*Established 1893*

LARGEST MANUFACTURERS  
OF GLAZED AND FACE BRICK  
IN THE EAST

*(Capacity 7,000,000 Units Per Mo.)*

FACE BRICK  
GLAZED BRICK  
ACID BRICK  
UNGLAZED FACING TILE  
GLAZED FACING TILE  
QUARRY TILE  
FLOOR BRICK

E. F. ZERGA, MGR.  
14545 SCHAEFER HWY. DETROIT 27  
VE. 7-3200

ELECTRICAL INSTALLATION  
for  
FIRST BAPTIST CHURCH  
FLINT, MICHIGAN

By

## UNITED ELECTRIC Co., Inc.

1134 DETROIT STREET  
FLINT 3, MICHIGAN

Electrical Construction

Industrial  
Commercial  
Institutional

FLINT 2-5615  
John Krason

## J. C. Nielsen & Company

GENERAL CONTRACTORS

ON

TORRY ELEMENTARY SCHOOL  
BIRMINGHAM, MICHIGAN

1209 Morse Street, Royal Oak, Mich.

Lincoln 4-1515

## PALOMBIT TILE COMPANY

ALL QUARRY TILE WORK  
IN FLYNN MEMORIAL BUILDING

TERRAZZO FLOOR AND STAIRS  
IN FRANKLIN ELEMENTARY SCHOOL

9750 GRINNELL AVENUE

DETROIT 13

WAlnut 2-2658

## THE STANLEY-CARTER CO.

MECHANICAL CONTRACTORS

Plumbing, Heating and Ventilating in McLouth Steel Corporation Office Building

13540 LINWOOD AVENUE

DETROIT 6, MICHIGAN

TULSA 3-1200



## TURPIN C. BANNISTER SPEAKER AT DETROIT CHAPTER MEETING

Turpin C. Bannister, Head of the Department of Architecture at the University of Illinois, was the speaker at the Detroit Chapter's annual joint meeting with its student associates in the Rackham Building, Detroit on the evening of May 24. His subject was "Is Modern Architecture Really Modern?"

Eighty-five members and guests were present for dinner. Before hearing the speaker of the evening President Saarinen gave a brief report of the Board meeting which took place during the afternoon. He also called upon

Clair Ditchy for a report of the Institute Convention just held in Chicago. The President read a letter from the Belding, Michigan Housing Commission, addressed to the Chapter, stating that the Commission would soon be in need of an architect, and inviting Chapter members who are qualified to get in touch with them.

Talmage Hughes was asked to outline the proposal for listing Detroit Chapter members under a special heading in the classified telephone directory, and he read the statement published in the May issue of the Monthly Bulletin. Members voted to put the plan into effect, with the understanding that it was for a trial period of one issue of the directory and would then be submitted to the membership again for further consideration and action before renewing it.

Announcement was made that Amedeo Leone had been elected by the Board as the Chapter's new Vice-President, to succeed Eero Saarinen, who became President upon the death of Andrew R. Morison.

It was announced that the Morison Memorial Scholarship fund had reached a total of \$1,338. The Board has under advisement a plan for the use of this fund. Letters of thanks and appreciation from Mrs. Morison and the staff of the Morison office were read.

Leo M. Bauer, President of the Michigan Society of Architects, gave a report on the status of Senate Bill 330, at Lansing.

This bill, which would greatly increase the size of residences that could be done without architectural services, had passed both the House and Senate, but, by much hard work, Mr. Bauer, Mr. Langius and our other representatives were able to have it referred back to Committee. You will hear much more about this in the near future.

At the Board meeting there appeared Mr. Donald M. Chaffee, of Chaffee Roofing, and Mr. Thomas A. Marshall, of Robert Hutton & Co., Inc., representing the Detroit Sheet Metal and Roofing Contractors Association, who presented a proposed plan for roof inspection service. The Board felt that there was much merit in the plan and referred it to its Committee on Relations with the Construction Industry: John C. Thornton, Chairman; Lyall H. Askew, George B. Brigham, C. William Palmer and George L. W. Schulz.

The President called upon Dean Wells I. Bennett of the College of Architecture and Design, University of Michigan, to conduct the portion of the meeting devoted to student awards. The Dean called upon L. Robert Blakeslee who made the two school awards for the University of Detroit to Edward A. Wettengel and Richard V. Wagener, and

the Detroit Chapter award to Carl Fromm.

Earl Pellerin of Lawrence Institute of Technology presented his school awards to Leon Yulkowski, Richard Reid, John Amarantides and Harold Kahn. The Detroit Chapter award also went to Yulkowski.

George M. McConkey presented the U. of M. Alpha Rho Chi Medal to James A. Fox.

Clair Ditchy presented the Henry Adams book, Mont St. Michel and Chartres, and the A.I.A. Medal to Sanford G. Rosen, also the book to Phineas Alpers. The Harley, Ellington & Day Scholarship went to Andrew J. Smith; the George G. Booth Traveling Fellowship to Robert C. Gaede; the Arthur C. Tagge Scholarship to Richard C. Millman and Raymond J. Taylor. The Detroit Chapter Award for U. of M. will be announced later.

After Dean Bennett's introduction, Prof. Bannister got quickly into his subject to indicate that "history is often more modern than today's inventions." His lecture was illustrated in a most interesting way with rare slides from historical documents to back up his findings that even our gadget mania is not particularly new.

Professor Bannister's lecture will be published in a future issue of the Bulletin.

## CONGRATULATIONS

To AMEDEO LEONE, who has just been named Vice-President of the Detroit Chapter of The American Institute of Architects.

Al needs no introduction to our members, having been tops in architectural circles hereabouts for many years. He came up by the design route, which in our book is the best of all. As Vice-President of Smith, Hinchman & Grylls, Inc., he has made distinct contributions to the art and architecture of our city and far beyond.

He is musical, and his whistling in the drafting room is not noise (unwanted sound) but is beautiful and a treat. In fact, they say that Al once studied music, and some of his old teachers still carry his notes.

ROBERT J. DAVIS, consulting structural engineer, announces the opening of offices at 2410 Book Tower, Detroit 26, Mich. His telephone number is Woodward 5-7474.



## ARCHITECTS COOPERATION

The following letter from E. J. Brunner, secretary of the Builders and Traders Exchange of Detroit merits full consideration:

Every time the NPA Order M-4 is amended, it includes more types of construction for which authorization is required before being started. As it stands now, recreational construction is prohibited, and authorization must be secured for commercial construction and for any type of construction which will use more than 25 tons of steel. Obtaining the authorization is a gamble, and securing the approval takes some little time.

General contractors, subcontractors and suppliers are all brought into the expense of estimating when a job goes out for bids. Lately the burden of figuring jobs for which no authorization has been made is terrific, and so we need help and understanding of our problem from the architects.

Through many years, the relations of the architects with the contractors and others in construction has made us sure of the good fact that the architects cooperate constructively. You do cooperate to sustain the economy of the construction industry.

At this time may we call upon you to do all you can to secure authorization before jobs are put out for competitive figuring. We, in turn, shall be glad to help in any way we can cooperate with you.

Editors Note: Many of you will remember that on January 17th, Mr. Brunner put this same thought before us when he addressed the meeting of the Detroit Chapter meeting in Veterans Memorial Hall.

CLAIR W. DITCHY is the author of a 13-page article on Eliel Saarinen in current issue of the Dutch magazine FORUM. It is beautifully illustrated by examples of Mr. Saarinen's work, and, while the text is in a foreign language, it is safe to say that it is a thoroughgoing and interesting treatise.

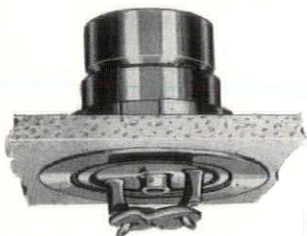
Clair has accepted the invitation of the Middle Atlantic District, A.I.A., to be toastmaster at the banquet, concluding event of District's Conference to be held concurrently with the Annual Convention of the New Jersey Society of Architects at the Berkeley-Carteret Hotel at Asbury Park, N. J., June 21-23, 1951. The District includes the states of Pennsylvania, New Jersey, Delaware, Maryland, District of Columbia, Virginia and West Virginia. C. E. Silling is Regional Director.

Also on his busy schedule is the fall trek to Europe for architects, scheduled to leave New York on September 1 and return October 6.



## VIKING SPRINKLER COMPANY

Manufacturers and Contractors



UNDERWRITER APPROVED "VIKING" DEVICES  
FOR MORE POSITIVE PROTECTION AGAINST  
FIRE LOSS

This new Flush Sprinkler is available where appearance is important. It is modern, efficient fire protection for today's offices, display rooms and locations of ultra design.

Let us show you these modern installations

4612 WOODWARD AVE., Detroit 1  
TE. 1-9604

315 ALLEN ST., N. W., Grand Rapids 4  
Tel. 9-6341

## NELSON COMPANY

PLUMBING

HEATING

& AIR CONDITIONING  
SUPPLIES

WHOLESALE

MAIN OFFICE

and

DISPLAY ROOM

2604 Fourth Ave.

Detroit 1

WO. 2-4160

Royal Oak - Grosse Pointe - Ann Arbor

## JOHN H. FREEMAN COMPANY

Distributors

*Builders' Hardware • Contractors' Supplies*

3627 CASS AT BRAINARD  
DETROIT 1, MICHIGAN  
TEMPLE 1-6760

## THE TOLEDO PLATE and WINDOW GLASS CO.

ESTABLISHED 1889

Manufacturers & Distributors

Glass Jobbers and  
Glazing Contractors

### Glass for Every Purpose

Polished Plate — Crystal Sheet  
and Window Glass

Rolled, Figured, Wired  
and Polished Plate Wired

L.O.F. Thermopane  
Insulating Units

Vitrolite Structural Glass  
Safety Glass

Metal Storefront Construction

Tee-Pee Asphalt Roofing  
Asbestos Asbestos Siding Shingles

Manufacturers of  
Mirrors — Beveled Plate  
Beau-Fort Medicine Cabinets

The Home of the Famous  
BEAU-VUE MIRRORS

WAREHOUSES

DETROIT — GRAND RAPIDS  
CLEVELAND — TOLEDO

## Heineman & Lovett Co.

WATERPROOFING ENGINEERS AND CONTRACTORS

GENUINE  
IRON BOND  
SYSTEMS



HI-TEX  
CEMENT  
COATINGS

For Basements, Pools, Tanks  
And Other Sub Structures

Restoring Concrete & Masonry  
Super Structures, Cement Coating  
For Water proofing & Decoration

5327 Tireman Avenue, Detroit 4, Michigan

TYler 6-1226

"DEPEND ON A DEPENDABLE NAME"

JOHN A. MERCIER BRICK COMPANY

3895 Roulo Ave., Dearborn

VI. 1-0761

MANUFACTURER & DISTRIBUTOR

Slag Block *Mercrete* Slag Brick

Lighter in Weight

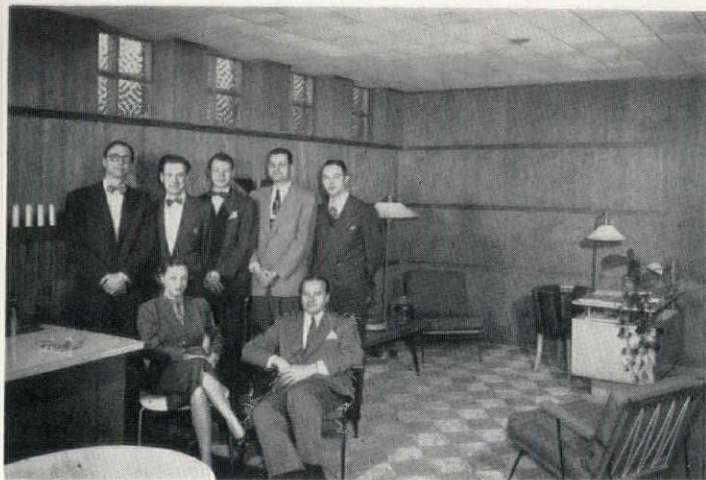
Lighter in Color

QUALITY FACE BRICK

"SPECIFY THE BEST"



# ARCHITECTS OF THE MONTH



Richard Shirk Photo

Swanson Associates, Architects, (left to right, sitting) Pipsan Saarinen Swanson, A.I.D., J. Robert F. Swanson, A.I.A. (left to right standing) John M. Crowell, A.I.A., John W. Jickling, A.I.A., Bruce A. King, Jr., Harold Broock, Harry M. Denyes, Jr., A.I.A.

IN THE SPRING OF 1924 Henry Scripps Booth and J. Robert F. Swanson opened an architectural office in an adjacent section of the Brookside School, Cranbrook, Bloomfield Hills, Michigan, doing residential work, early studies of the Cranbrook schools, and other work on the estate. The late Eliel Saarinen joined this group in 1925, and a year later, with the Boy's School well under way, the Cranbrook Architectural Office was established as an institutional operation under Eliel Saarinen. At that time Mr. Swanson formed his own office to carry on the outside work. Since then he has continually maintained an office in this area, at various times was associated with Eliel Saarinen and was his partner from 1941 to 1947. In 1928 Pipsan Saarinen Swanson joined the office to take over the Interior Design Department.

Having been engaged in work of considerable variety during this period, the Swanson organization continues to offer complete, integrated service in widely-diversified fields of design. In addition to a general architectural practice ranging from residential and commercial buildings to schools, churches and other institu-

tional buildings, the firm is also active in city and site planning work and interior and industrial design.

City planning work accomplished by Swanson Associates has included extensive research programs and comprehensive development plans for the cities of Champaign-Urbana, Rockford, and Wilmette, Illinois; New Castle, Indiana; Willow Run, and Bloomfield Hills, Michigan. The firm also has served as planning consultant to several universities, including the University of Illinois, Antioch and Stephens Colleges, Drake University, and Louisiana State University. (See Cover). The Swansons were also closely identified with the inception and planning work for the Cranbrook schools, the General Motors Technical Center, and the Detroit Civic Center.

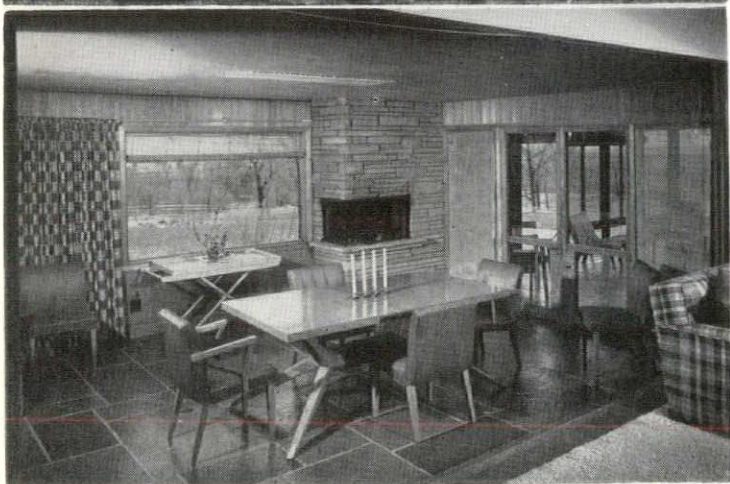
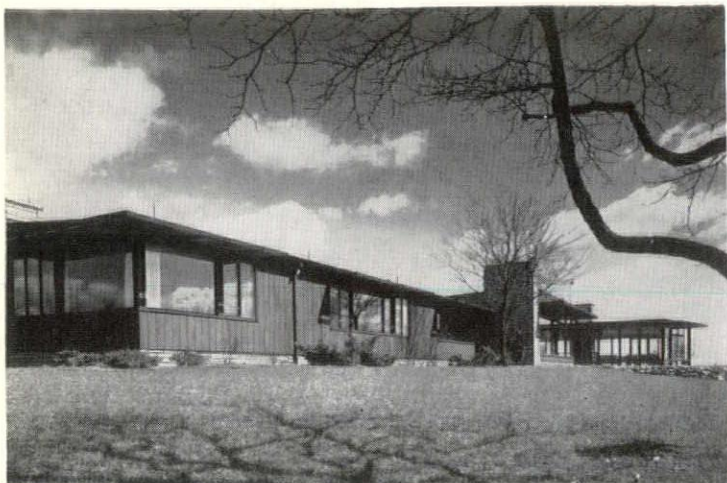
The organization engages not only in complete interiors for most of the buildings designed by the office, but also has developed widely-known coordinated home furnishings; furniture, glassware, metalcraft objects, textiles, and other industrial design products. These products are available under the auspices of such dis-



Harvey Croze Photo

Swanson Associates Building, West Long Lake Road, Bloomfield Hills, Michigan.





Richard Shirk Photos

J. Lafayette Cote' Residence, Oxford, Michigan—general view and dining room.

tinguished names as Goodall Fabrics, Cray of Boston, Tiffin Glassware, Johnson Furniture Company, and Ficks-Reed Company. (See Picture). These enterprises have led to a number of pioneering design innovations, typified by the stacking chair, illustrated on these pages, developed for the American Seating Company. This broad approach to the entire design field has made possible the exercise of an unusual degree of control, insuring harmonious and well-integrated results in given building situations.

Professional honors accorded members of the firm and the office include awards in several important competitions, among them the first prize for the Smithsonian Art Gallery with the Saarinens, the second prize in the Wayne University competition with Eliel Saarinen, the first prize in the Chicago Plan Competition, which was won by the same office, although the project was entered under the names of some of the staff. More recently, Swanson Associates received the Award of Merit for school design by the National Association of School Administrators and first prize in a competition for the best large church design awarded by the Guild of Church Architects and the North American Conference on Church Architecture.

Harvey Croze Photo



Sol-Air furniture group, designed by Swanson Associates, manufactured and sold by Ficks-Reed Company.





George W. Davis Photo

Stacking Chair, designed by Swanson Associates, produced by American Seating Co.



Richard Shirk Photo

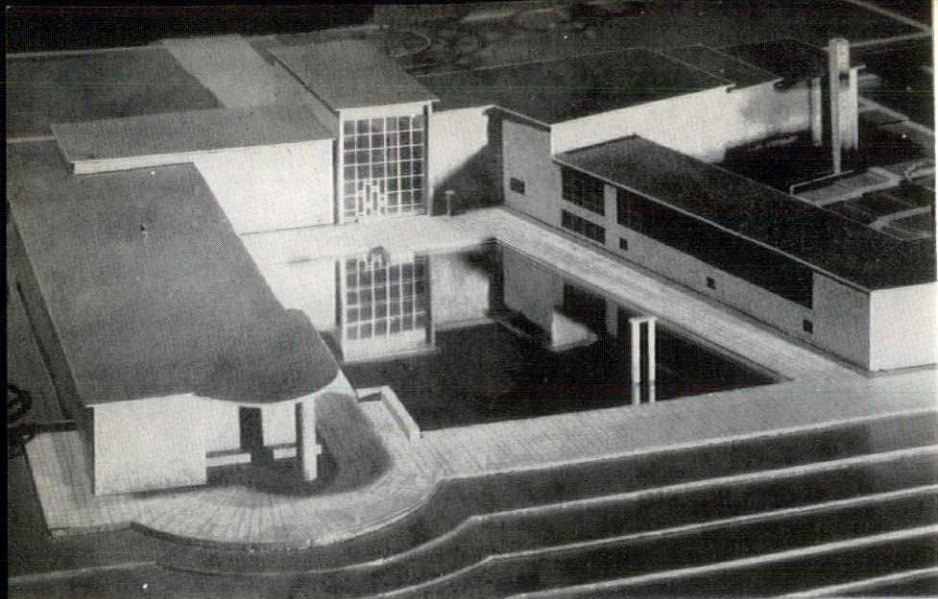
Franklin Elementary School, Franklin, Michigan—interior view.

Swanson Associates office is located in its own building on West Long Lake Road, in Bloomfield Hills, Michigan. The organization furnishes complete engineering services and brings in specialized consulting engineering services as particular situations may require. The building incorporates all the facilities needed to service a well-rounded organization, including a fully-equipped model shop and blueprinting department.



Birmingham National Bank, Birmingham, Michigan—interior showing of office areas.





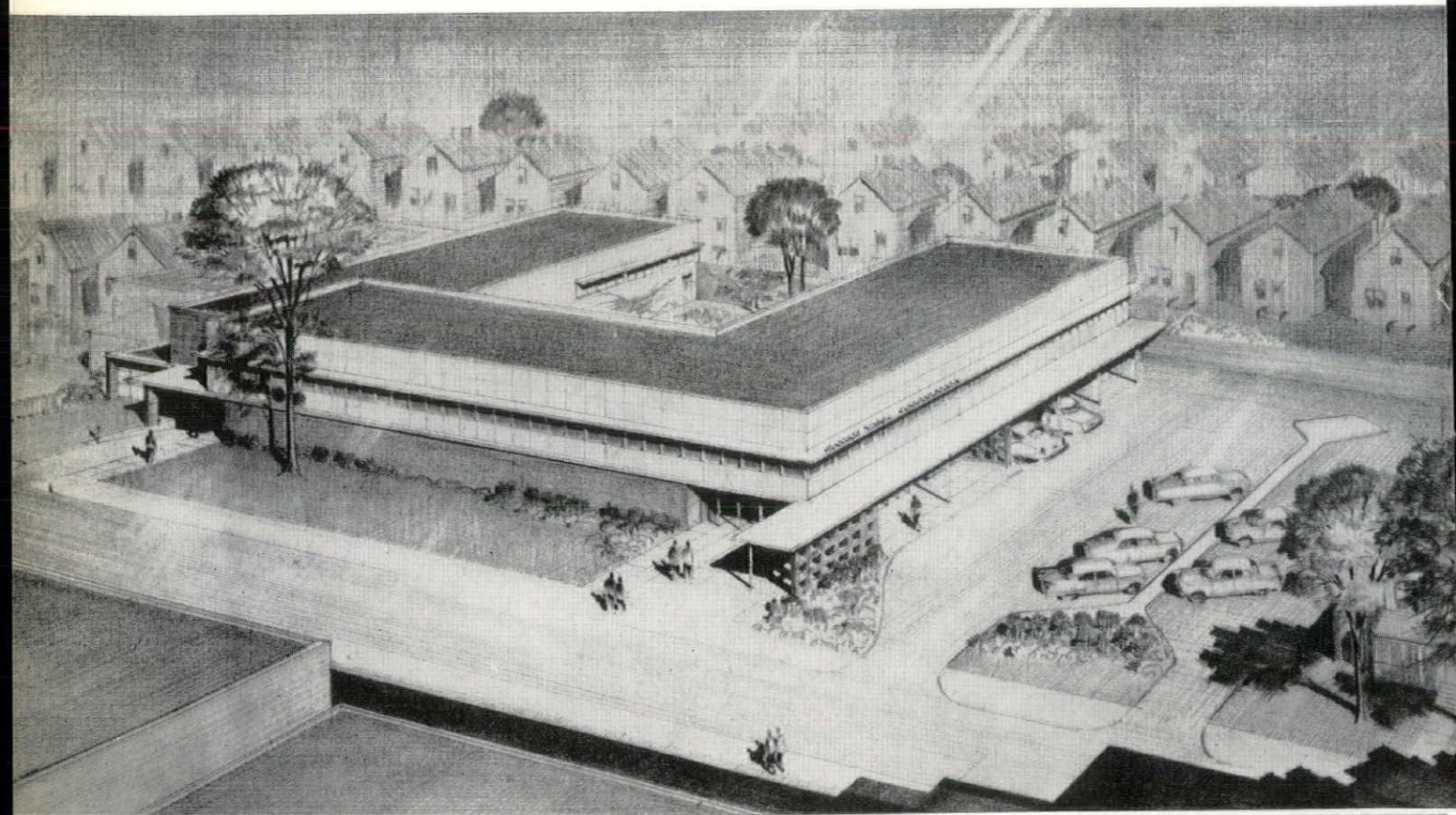
\*Saarinen and Swanson, Architects

Harvey Croze Photo

Fort Wayne Art School and Museum, Fort Wayne, Indiana,  
general view of the model.

To facilitate and expedite contact with the office projects and clients the organization maintains and operates an office airplane.

The work of the office of Swanson Associates, Architects, illustrated by the photographs on these pages, is intended to be representative of the diverse character and scope of the work produced by this office.



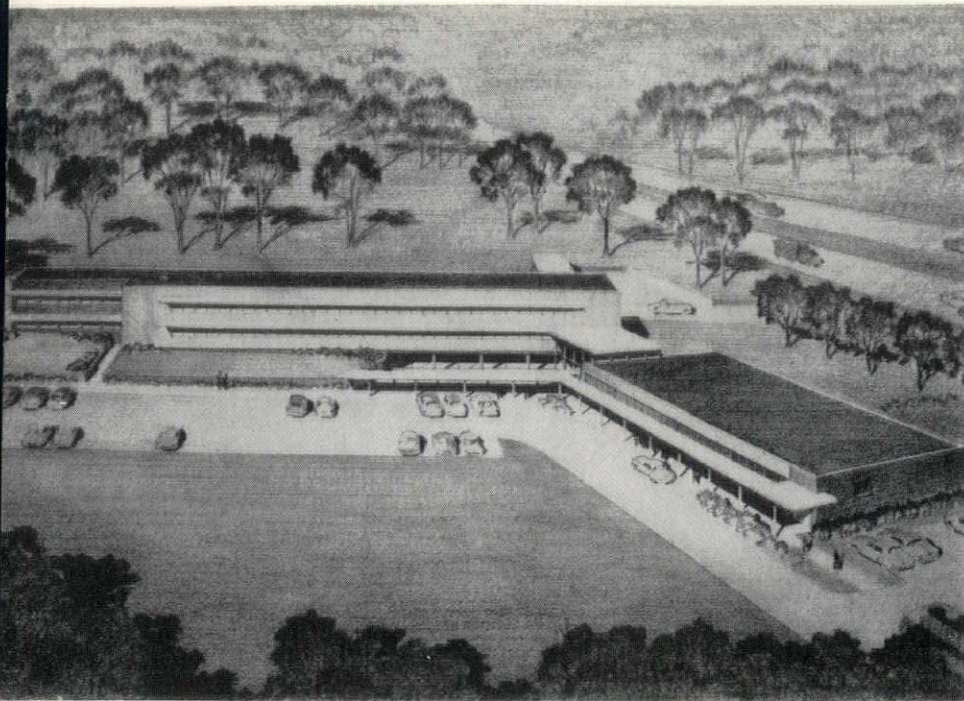
McLouth Steel Corporation, Office Building, Detroit, Michigan—ultimate expansion.

McLouth Steel Corporation, Office Building, Detroit, Michigan—first unit.



Richard Shirk Photo

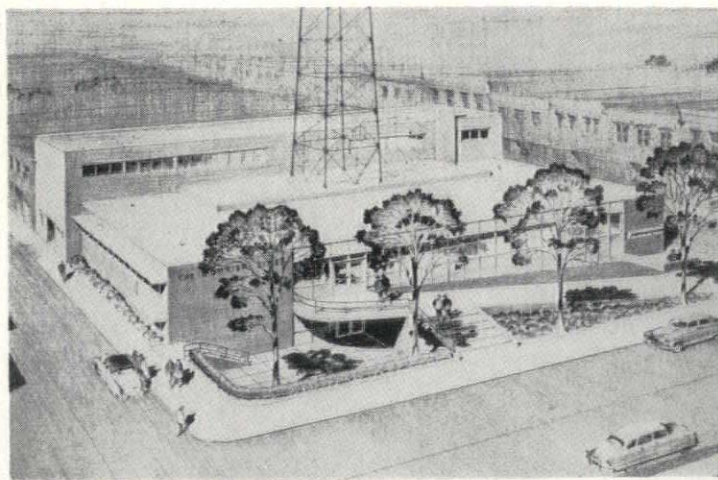




Multi-Color Photo

MacManus, John & Adams, Office Building,  
Bloomfield Hills, Michigan—general view.

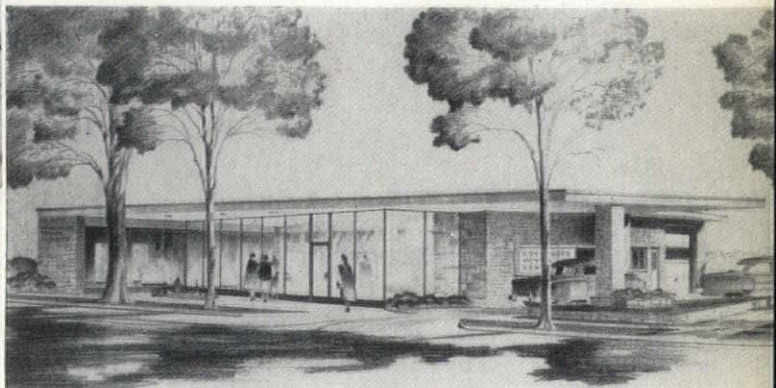
In the commercial and industrial field many modern and efficient buildings have emanated from the office of Swanson Associates, of which a representative sampling is pictured on these pages. The firm has served in a regular consulting capacity to various industrial and manufacturing concerns. As consultants, the problems of site selection and analysis as related to utilities, soil, highway transportation, and other basic data becomes an important factor in the studies made. The city planning department develops many of the phases of these operations.



Newspaper Plant, "The Courier Times,"  
New Castle, Indiana—general view.



Wyandotte Savings Bank, Wyandotte, Michigan—general view.



Multi-Color Photo

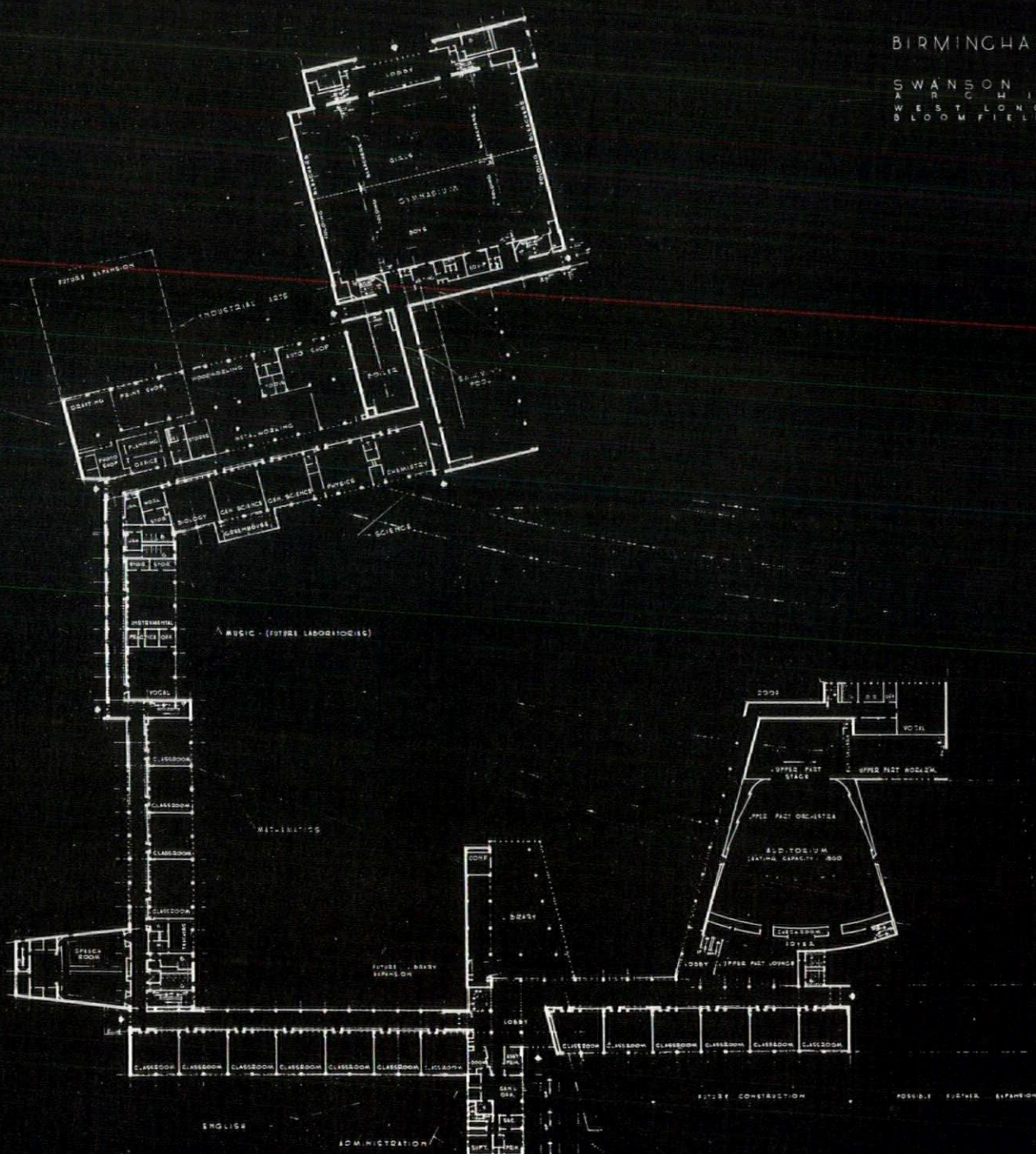
Consumers Power Company, Birmingham,  
Michigan — Customers' Service Depot.



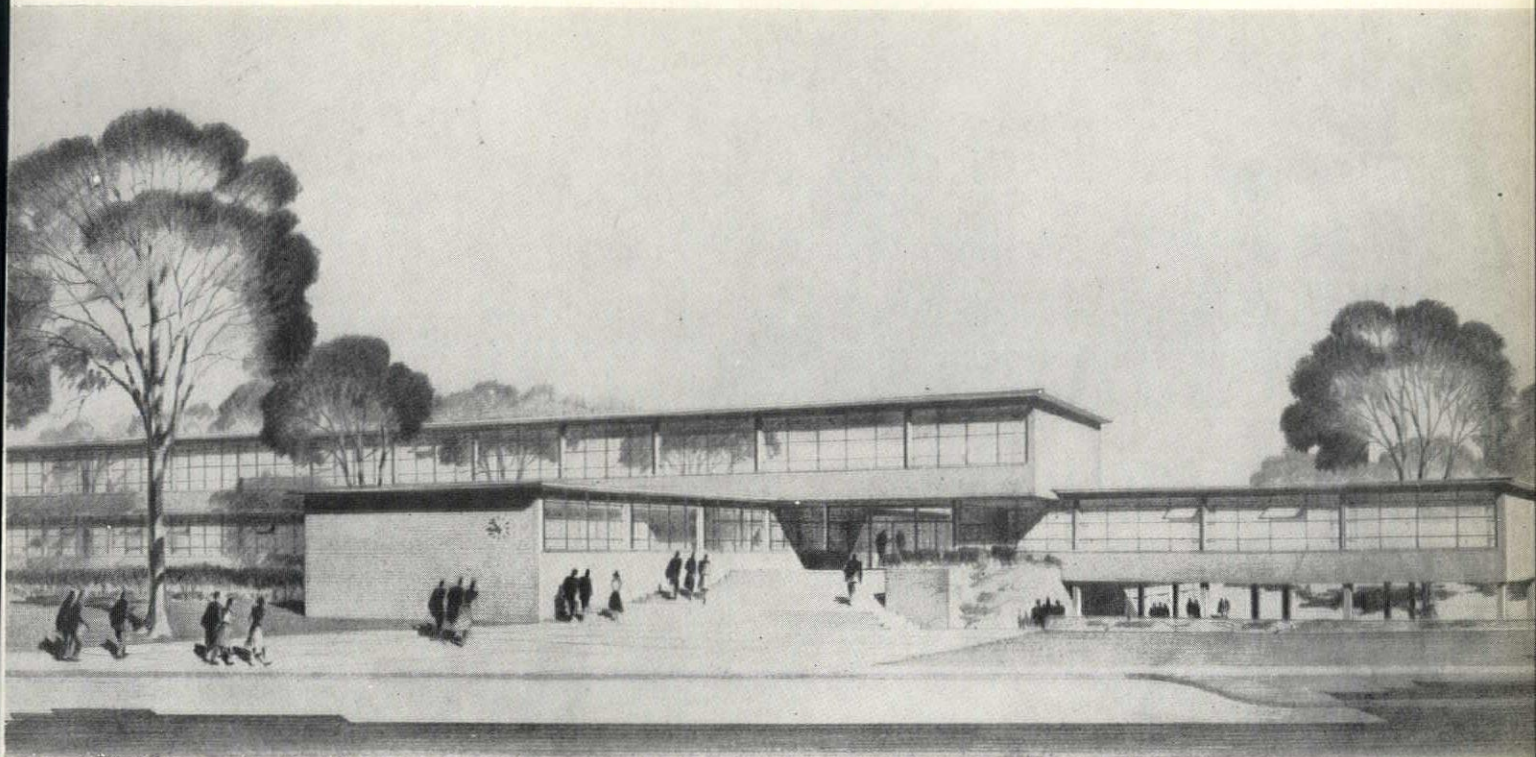
erected in the United States during the post-war period. Designed ultimately to accommodate 1,500 to 1,800 students, this modern school plant incorporates virtually every feature that progressive educational methods require, yet

B I R M I N G H A M   H I G H   S C H O O L

SWANSON ASSOCIATES  
ARCHITECTS  
WEST LONG LAKE  
BLOOMFIELD HILLS MI







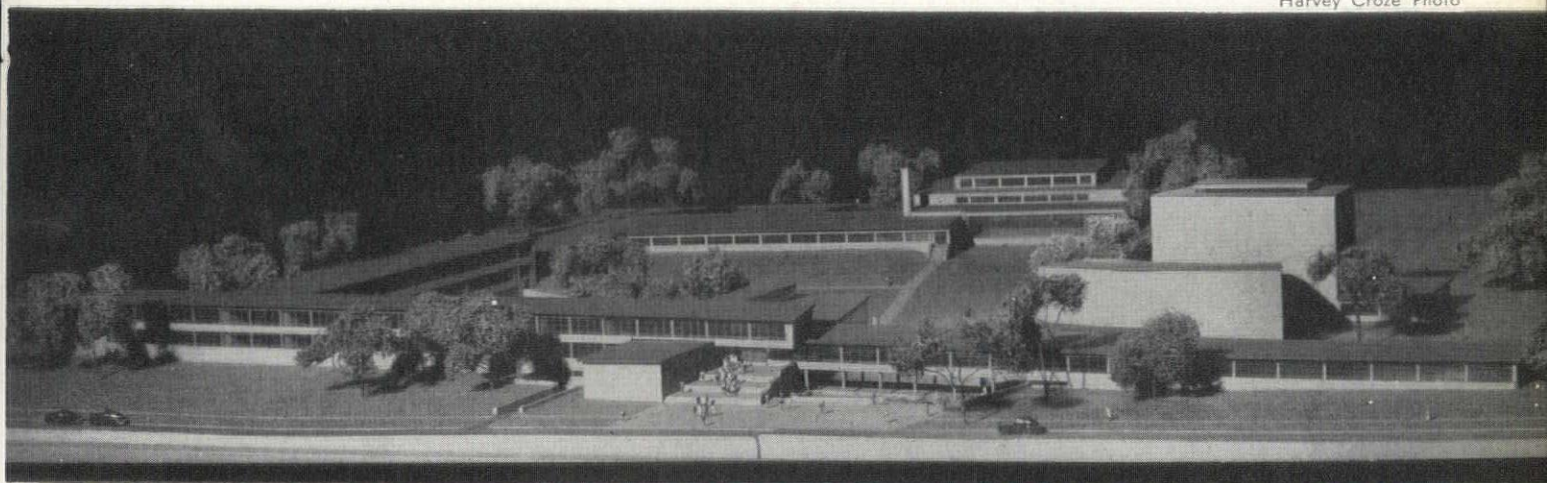
Birmingham High School, Birmingham, Michigan—entrance detail.

its unit cost compares very favorably with other high schools.

This building is constructed of steel frame throughout, with brick curtain walls, brick and gunite spandrels, limestone trim, and aluminum sash.

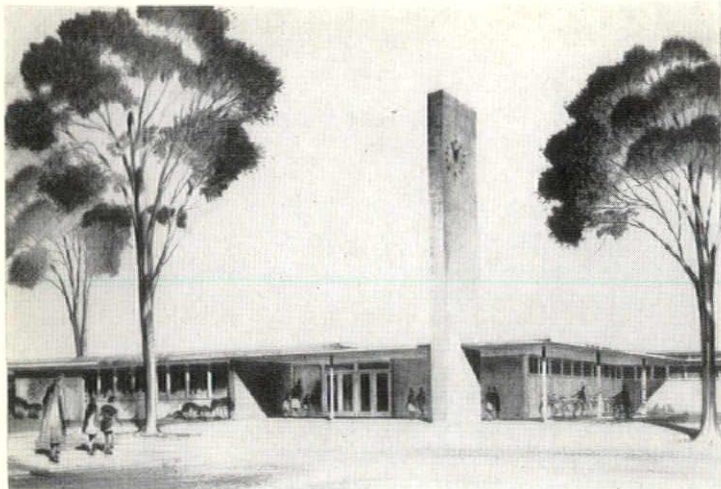
The Auditorium, not being erected in the current program, will accommodate 1,800 persons, will have every facility for legitimate theatre productions, and will serve the entire community life as well as the school proper. A smaller auditorium is included in initial plant now being built.

Harvey Croze Photo



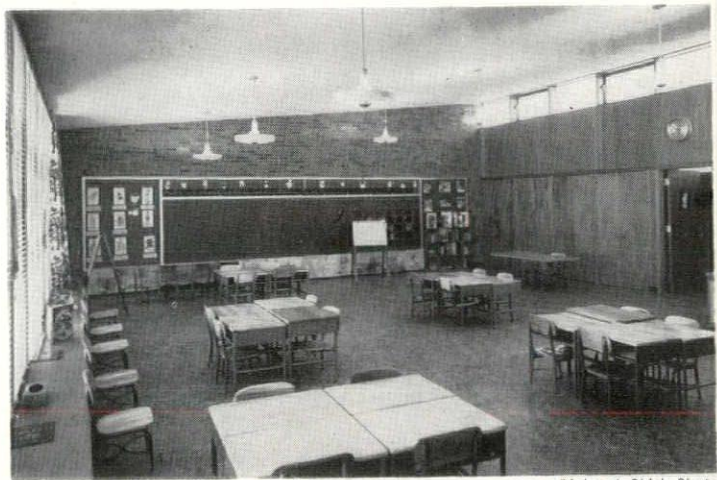
Birmingham High School, Birmingham, Michigan—general view of the model.





Torry Elementary School, Birmingham, Michigan—entrance detail.

Torry Elementary School, Birmingham, Michigan—general view of typical classroom.



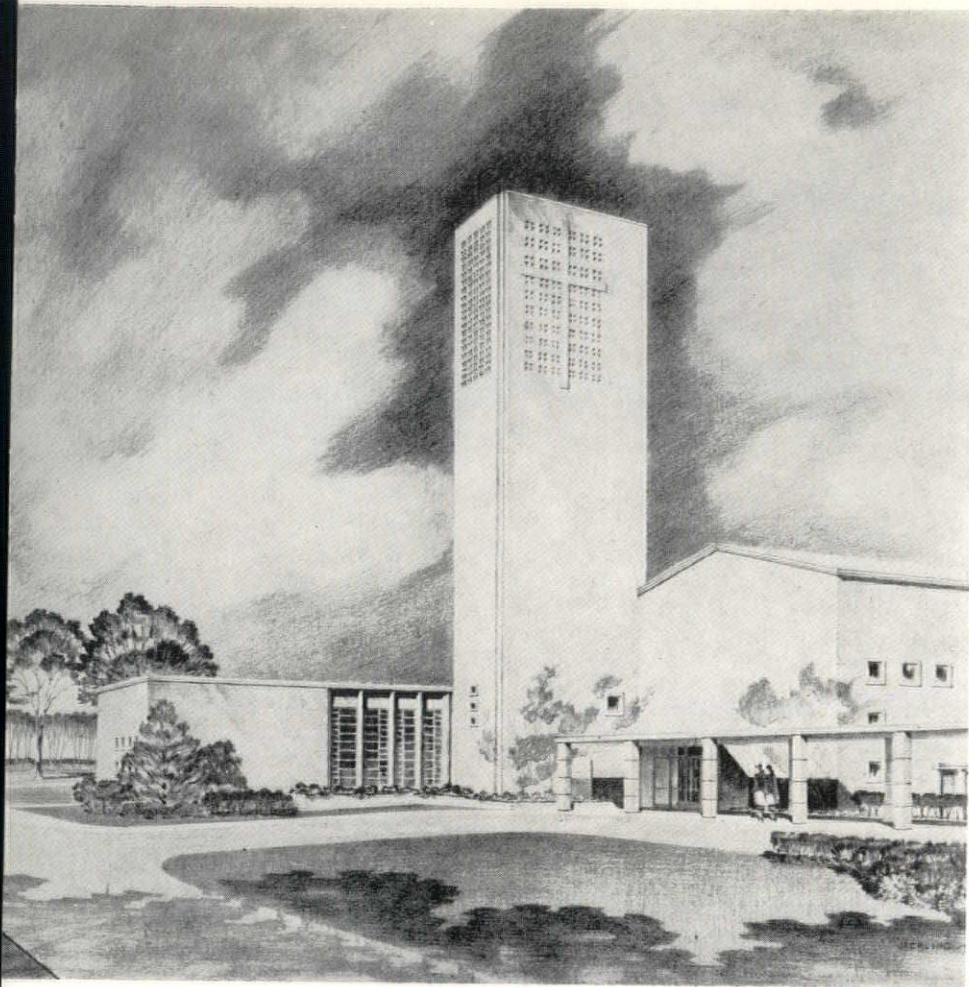
Richard Shirk Photo

This school, consisting of nine classrooms and relating functions, is an admirable illustration of the trend in modern design practice toward scaling elementary school building to the children and harmonizing their entire atmosphere to make them an

adjunct to, and transition from, the home. This philosophy has found expression in this building in the use of materials and color in a decorative theme as home-like as possible, commensurate with reasonable first cost and maintenance factors. Extensive use is made of natural wood finish and cheerful, bright color and pattern. Bi-lateral lighting is employed throughout, as well as radiant floor panel heating.

This school received an Award of Merit when exhibited at the Atlantic City convention of the National Association of School Administrators earlier this year.



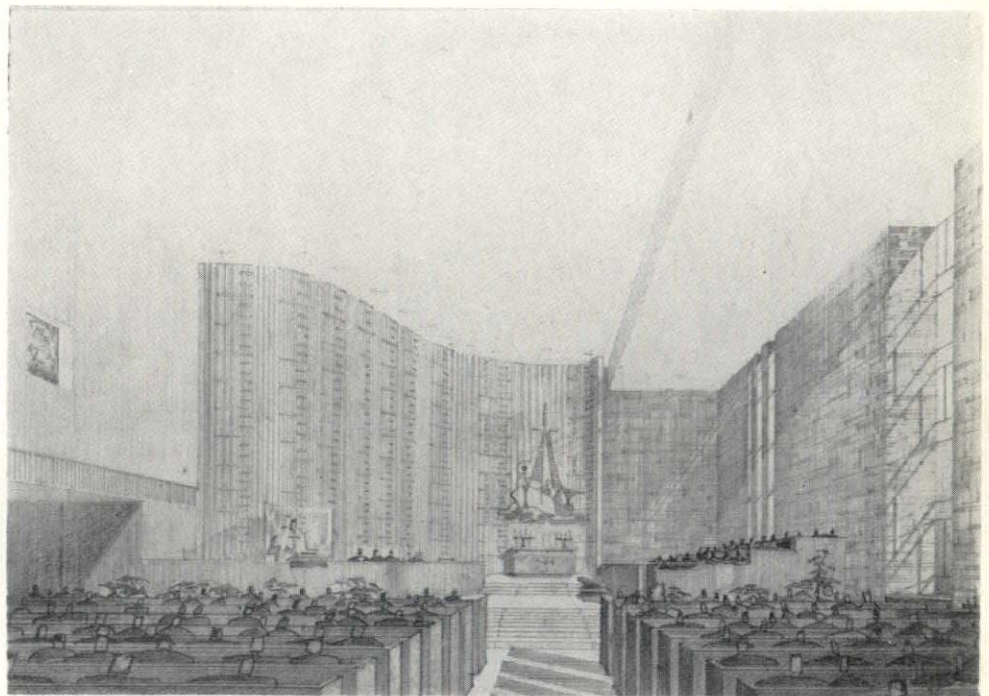


Multi-Color Photo

This large church plant, now under construction, represents the fruition of a progressive concept of the Church as a community institution as well as one to serve the immediate needs of the congregation itself. It is, therefore, rather complex in its functions, with many spaces designed for multiple uses. It will accommodate day school activities, civic organization meetings, etc., in addition to the specific program of the Church.

First Baptist Church, Flint, Michigan—tower and entrance detail.

This building exemplifies a fresh approach to the problem of church design character and is the result of studies carried on over a period of several years, ranging from stylistic to completely modern versions. The building will be executed in a brick of light tone with stone trim.



First Baptist Church, Flint, Michigan—sanctuary and chancel. This building was awarded first place in a competition for churches of this classification throughout the United States, sponsored by the North American Conference on Church Architecture and the Guild of Church Architects.



## THE FOLLOWING FIRMS ARE IDENTIFIED WITH THE WORK FEATURED

### BIRMINGHAM HIGH SCHOOL

BERTI PLASTERING SERVICE  
CHAFFEE ROOFING CO.  
CRAWFORD DOOR SALES CO.  
DODD & STRUTHERS, INC.  
GIBRALTAR FLOORS, INC.  
HALL ENGINEERING CO.  
HANNA, ZABRISKIE & DARON  
RAY T. LYONS CO.  
MOYNAHAN BRONZE CO., INC.  
RUSSELL HARDWARE CO.  
THOMAS BRICK & TILE CO.  
WESTERN WATERPROOFING CO.  
WHITCOMB-BAUER FLOORING, INC.  
O. C. WITTE CO.

### BIRMINGHAM NATIONAL BANK

ALUMINUM & ARCH. METALS CO.  
CINDER BLOCK, INC.  
JOHN H. FREEMAN CO.  
GIBRALTAR FLOORS, INC.  
THOMAS BRICK & TILE CO.

### J. LAFAYETTE COTE' RESIDENCE

DODD & STRUTHERS, INC.  
E. J. KOWALSKY, PLUMB. & HEAT.  
RAY T. LYONS, CO.  
NATIONAL SHOWER EQUIP. MFG. CO.  
RUSSELL HARDWARE CO.  
HARRY & CHARLES SWEENEY, PLAST'NG.  
TURNER-BROOKS, INC.

### FLYNN MEMORIAL BUILDING

NOBLE CARR, UNIT STRUCTURES  
JOHN H. FREEMAN CO.  
N. W. HAMILL CO.  
PALOMBIT TILE CO.  
THE WALLACE STONE CO.  
WHITCOMB-BAUER FLOORING, INC.

### FRANKLIN ELEMENTARY SCHOOL

CINDER BLOCK, INC.  
DODD & STRUTHERS, INC.  
N. W. HAMILL CO.  
MASTERCRAFT HEAT ENGINEERING CO.  
MEIER CUT STONE CO.  
PALOMBIT TILE CO.  
PENINSULAR SLATE CO.  
RESTRICK LUMBER CO.  
RUSSELL HARDWARE CO.  
THOMAS-WILSON CO., INC.

### McLOUTH STEEL CORPORATION

MUNRO AIRD, PLASTERING  
CINDER BLOCK, INC.  
CRAWFORD DOOR SALES CO.  
GYPSUM CONSTRUCTORS, INC.  
HALL ENGINEERING CO.  
THE STANLEY-CARTER CO.  
THOMAS BRICK & TILE CO.  
TURNER-BROOKS, INC.  
WEST DETROIT GLASS CO.

### FIRST BAPTIST CHURCH

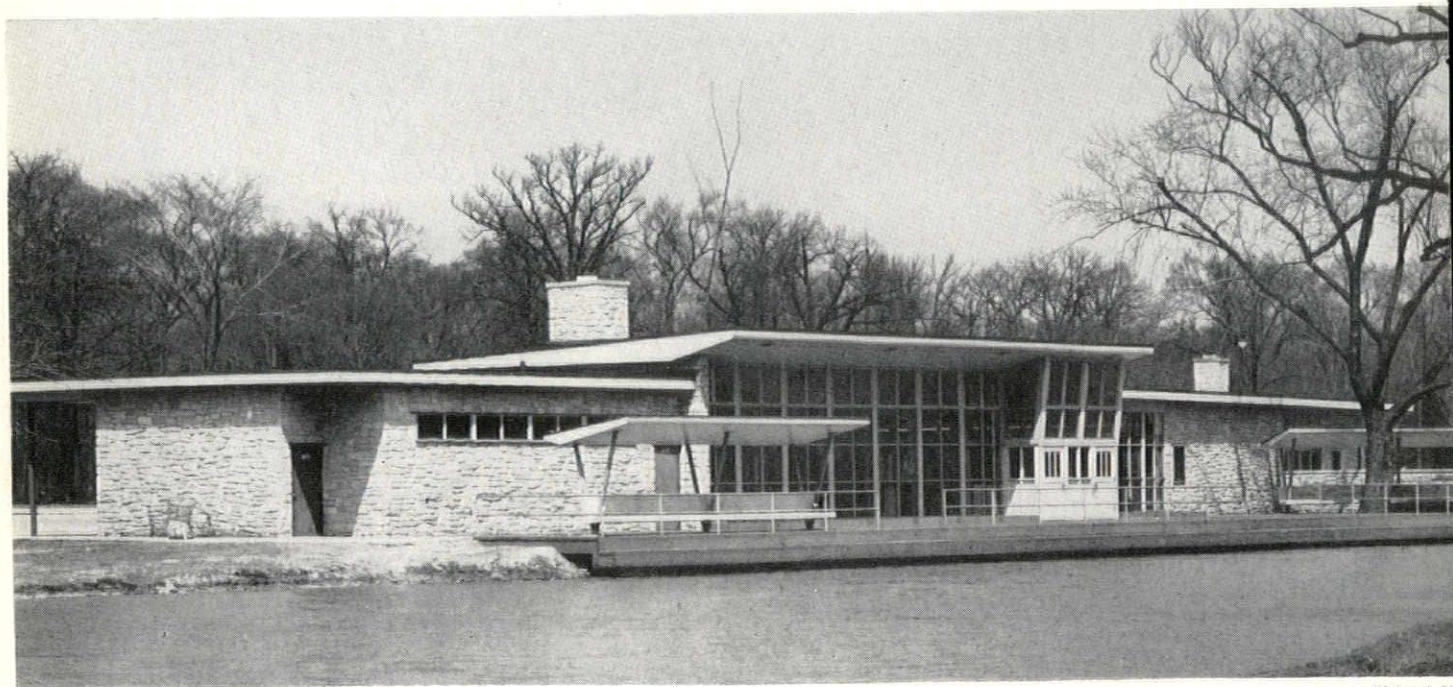
DETROIT ACOUSTICAL CONTR. CO.  
SORENSEN-GROSS CONSTRUCTION CO.  
STERNER ROOFING & SHEET METAL CO.  
UNITED ELECTRIC CO., INC.

### SWANSON ASSOCIATES' OFFICES

CADILLAC GLASS CO.  
RAY T. LYONS CO.  
RUSSELL HARDWARE CO.  
J. A. UTLEY CO.

### TORRY ELEMENTARY SCHOOL

CINDER BLOCK INC.  
DODD & STRUTHERS INC.  
RAY T. LYONS CO.  
MASTERCRAFT HEAT ENGINEERING CO.  
J. C. NEILSEN & CO.  
PENINSULAR SLATE CO.  
C. E. REAM PLUMBING  
ROHN FIREPROOFING CO.  
RUSSELL HARDWARE CO.  
MURRAY W. SALES & CO.  
ST. CLAIR SALES CO.  
THOMAS BRICK & TILE CO.  
WEST DETROIT GLASS CO.  
WESTERN WATERPROOFING CO.



Flynn Memorial Recreation Building, Belle Isle, Detroit, Michigan—general view.



## C. E. REAM

PLUMBING  
and  
HEATING  
CONTRACTOR



620 South Main St.  
Royal Oak, Michigan  
Lincoln 1-2490

## STERNER Roofing & Sheet Metal Co.

C. L. HOWARD, Mgr.

Bonded Roofing and  
Air Conditioning  
for  
FIRST BAPTIST CHURCH  
Flint, Michigan

CRAPO STREET, at G.T.R.R.  
FLINT, MICHIGAN  
FLINT 4-8676

## WESTERN WATERPROOFING COMPANY

WATERPROOFING  
CONTRACTORS & ENGINEERS

IRONITE—For Below-Grade  
Waterproofing

RESTO-CRETE—For Weather-  
proofing & Building  
Restoration

9960 Freeland Detroit 27, Mich.  
TEXas 4-5550

ATLANTIC METAL PRODUCTS, INC.  
• Hollow Metal Doors & Frames  
• Kalamein & Tinclad Doors

KANE MFG. CO.  
• Light Proof Shades

VENTILOUVRE CO.  
• Louvres

ENGINEERING • MATERIAL • INSTALLATION

*N. W. Hamill Co.*

GENERAL LEAD CONSTRUCTION CO.  
X-Ray Protection • Engineering  
Fabrication • Installation

UNIVERSAL WINDOW CO.  
Donovan Awning Type Windows  
THE KAWNEER COMPANY  
Institutional Entrances  
Aluminum Flush Doors

Caulking • Tuck-Pointing • Weatherstrips  
407 EAST FORT STREET • DETROIT 26 • WOODWARD 1-0110

## Harry and Charles SWEENEY

PLASTERING CONTRACTORS

ESTABLISHED 1921

Specializing in  
Fine Residential Work

30 ENSLEY ST., OXFORD, MICH.  
OAKLAND 8-3595

## E. J. KOWALSKY

ESTABLISHED 1921

PLUMBING & HEATING  
CONTRACTORS

Automatic Heating of all kinds and  
Specialists in Radiant Heating for  
Fine Residences

Hot Point and Westinghouse Appliances  
Timken Silent Automatic Heating

697 LAPEER ROAD, M-24,  
OAKLAND 8-3201 OXFORD, MICH.

## BERTI PLASTERING SERVICE

ESTABLISHED 1914

Lathing and Plastering Contractors  
for Birmingham High School

18500 JAMES COUZENS HWY.,  
University 4-8024 DETROIT 35

## THE DUNN - RAINEY COMPANY

MANUFACTURERS

"DURA-GLAZE" ELASTIC GLAZING COMPOUNDS  
"DURA-SEAL" ELASTIC CAULKING COMPOUNDS  
METAL AND WOOD SASH PUTTY

4461 West Jefferson Avenue  
DETROIT 9, MICHIGAN

Telephone  
T Ashmo 5-7156



ERWIN  
D  
T  
E  
E  
P  
E

## PLUMBING and HEATING

VERmont 7-3798

13624 AUBURN ST.

Detroit 23, Mich.

## SEVERAL BUILDINGS

ILLUSTRATED IN THIS ISSUE

ARE PROTECTED WITH

DODD & STRUTHERS

LIGHTNING RODS

— □ —

**Dodd & Struthers, Inc.**

1721 MOY AVE., WINDSOR, ONT.

WINDSOR 3-8510

**HARRIGAN  
and REID CO.**

HEATING  
&  
PLUMBING  
ENGINEERS

SUMMER AND WINTER  
AIR CONDITIONING

SHEET METAL WORK

1365 BAGLEY AVE., DETROIT 26

WOodward 1-0243

## Directory of Advertisers

Aird, Munro	18
Aluminum & Architectural Metals Co.	10
Armstrong Co.	20
Back, Wm. F. Lumber Co.	36
Berti Plastering Co.	35
Braun Lumber Co.	36
Bryant Heater Detroit Sales	3rd Cover
Burke, O. W. Co.	12
Cadillac Glass Co.	3rd Cover
Candler, J. D. Roofing, Inc.	20
Carr, Noble	14
Century Brick Co.	3
Chaffee Roofing Co.	10
Cinder Block, Inc.	2nd Cover
Couse, Walter L. & Co.	6
Crawford Door Sales Co.	18
Daelyte Service Co.	2
Darin & Armstrong, Inc.	12
Den Braven, M. Co.	6
Detroit Acoustical Contracting Co.	18
Detroit Brick & Block Co.	12
Detroit Edison Co.	1
Dickinson, H. H. Co.	16
Diebold, Inc.	16
Dodd & Struthers, Inc.	36
Dunn Blue Print Co.	6
Dunn-Rainey Co.	35
Eastern Cabinet Works	12
Freeman, John H. Co.	24
Gibraltar Floors, Inc.	22
Glanz & Killian Co.	20
Grace Harbor Lumber Co.	36
Gypsum Constructors, Inc.	3rd Cover
Hall Engineering Co.	8
Hamill, N. W. Co.	35
Hanley Co.	22
Hanna, Zabriskie & Daron	10
Harrigan & Reid Co.	36
Heineman & Lovett Co.	24
Horn Fuel & Supply Co.	2nd Cover
Huron Portland Cement Co.	20
Hutton, Robert & Co., Inc.	16
Kaufmann Corporation	15
Koenig Coal & Supply Co.	6
Kowalsky, E. J.	35
Krieghoff Co.	3rd Cover
Kurtz Brick Co.	12
Kutsche, A. W. & Co.	16
LaSalle Electric & Mill Supply Co.	8
Long Sign Co.	4
Lyons, Ray T. Co.	6
Mahon, The R. C. Co.	4th Cover
Martin, F. H. Construction Co.	20
Mastercraft Heat & Engineering Co.	10
Mechanical Heat & Cold, Inc.	2
Meier Cut Stone Co.	4
Mercier, John A. Brick Co.	24
Michigan Consolidate Gas Co.	2nd Cover
Moynahan Bronze Co.	3
Multi-Color Co.	36
National Shower Equipment Mfg. Co.	17
Nelson Co.	24
Nielsen, J. C. & Co.	22
Odien, George A., Inc.	12
Palombit Tile Co.	22
Peninsular Slate Co.	14
Plastic Products Co.	3
Ream, C. E.	35
Restrick Lumber Co.	36
Rogers, Maurice V. Co.	4
Rohn Fireproofing Co.	8
Russell Hardware Co.	14
Sales, Murray W. & Co.	16
Sibley, F. M. Lumber Co.	36
Sorensen-Gross Construction Co.	14
Stanley-Carter Co.	22
St. Clair Sales Co.	8
Sterling Structural Steel Co.	4
Stern Roofing Co.	35
Stevens, Frederic B., Inc.	16
Stevens Heating & Ventilating Co.	4
Sweeney, Harry & Charles	35

**Duplicate!**

- BLUEPRINTS (Nu-Blue)
- PHOTOSTATS (Sharp)
- PHOTOGRAPHIC MURALS
- ENLARGEMENTS • TONING
- MOUNTING

*Snappy Delivery Service!*

CALL FOR OUR SALESMAN

**The Multi-Color Co.**

629 Woodward  
WO. 1-0666

126 Delaware  
TR. 5-0780

Teepe, Erwin D.	36
Thayer, R. D. Co.	6
Thomas Brick & Tile Co.	20
Thompson-Wilson Co.	8
Toledo Plate & Window Glass Co.	24
Turner-Brooks, Inc.	3
Unit Structures, Inc.	14
United Electric Co., Inc.	22
Utley, J. A. Co.	2
Viking Sprinkler Co.	24
Wallace Stone Co.	14
West Detroit Glass Co.	18
Western Waterproofing Co.	35
Whitcomb-Bauer, Flooring, Inc.	18
Witte, O. C. Co.	10

ALBERT KAHN ASSOCIATED ARCHITECTS & ENGINEERS, INC., announces the reelection of its Board of Directors, to serve for the current year.

Board members are: George H. Miehl, Sheldon Marston, Saul Saulson,



MARSTON



MIEHLS

O. L. Canfield and George K. Scrymgeour.

The Board reelected Miehl, President; Marston, Executive Vice-President; Scrymgeour, Secretary, and the following as Vice-Presidents: Saulson, Canfield, R. E. Linton, F. K. Boomhower, and F. A. Fairbrother.

## — LUMBER DEALERS —

*Wm. F. Back*

LUMBER CO. WA. 1-9460  
5172 ST. JEAN AVENUE • DETROIT 13, MICHIGAN

BRAUN LUMBER COMPANY

TO. 8-0320

1555 E. Davison

Detroit 3

**GRACE HARBOR**  
Lumber Company

13833 West Chicago  
DETROIT 28, MICH.

ESTABLISHED 1892  
WE 3-4913

*Restrick Lumber Company*


Since 1884  
14400 WYOMING AVENUE  
DETROIT 21, MICHIGAN  
WE. 3-4830



F. M. SIBLEY  
LUMBER CO.  
LO. 7-5100

6460 Kercheval Avenue  
Detroit 14, Mich.





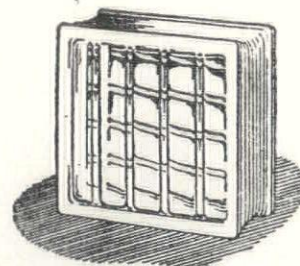
**KRIEGHOFF  
COMPANY**  
GENERAL BUILDERS  
Est. 1909

INSTITUTIONAL  
INDUSTRIAL  
COMMERCIAL

6661 FRENCH ROAD  
DETROIT 13, MICHIGAN

Walnut 1-3400

## Glass Block



FOR YOUR PLANT

Now!

CRITICAL MATERIALS ARE NOT REQUIRED TO ERECT GLASS  
BLOCK PANELS IN THAT NEW PLANT ADDITION — OR IN  
REPLACING WORNOUT SASH IN EXISTING BUILDINGS.

*Get Insulux Glass Block — Without Delay*

CALL VALLEY 1-7200

**CADILLAC GLASS COMPANY**

2570 HART AVENUE, DETROIT 14, MICHIGAN

## SUPERIOR ROOF DECKS OF POURED & PRE-CAST GYPSUM

STRONG — DURABLE — FIREPROOF

Materials Immediately Available for Your Needs

**GYPSUM CONSTRUCTORS, INC.**

5905 Middlebelt Road

MIDDLEBELT 5513

Garden City, Mich.

*For successful heating...*

# ALWAYS SPECIFY

# bryant

**AUTOMATIC HEATING**

BRYANT HEATER DETROIT SALES BRANCH  
617 Central Detroit Warehouse • Phone, Woodward 3-0182

Your single source of supply for everything in gas heating equipment!





# INSULATED

# METAL WALLS

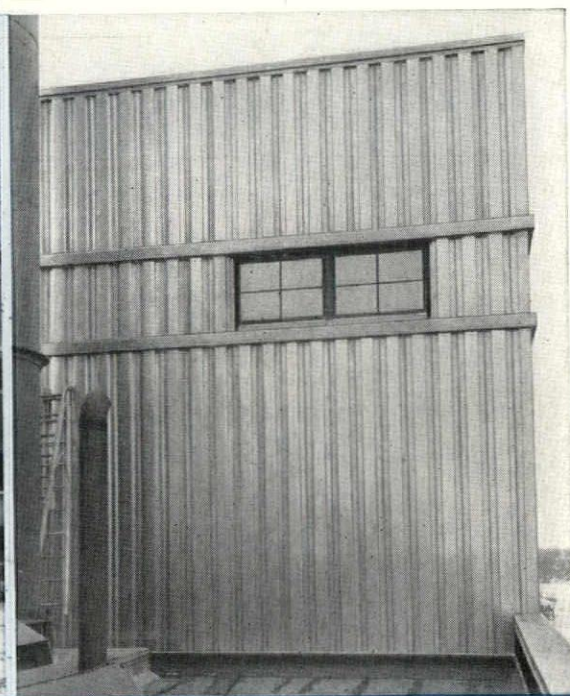
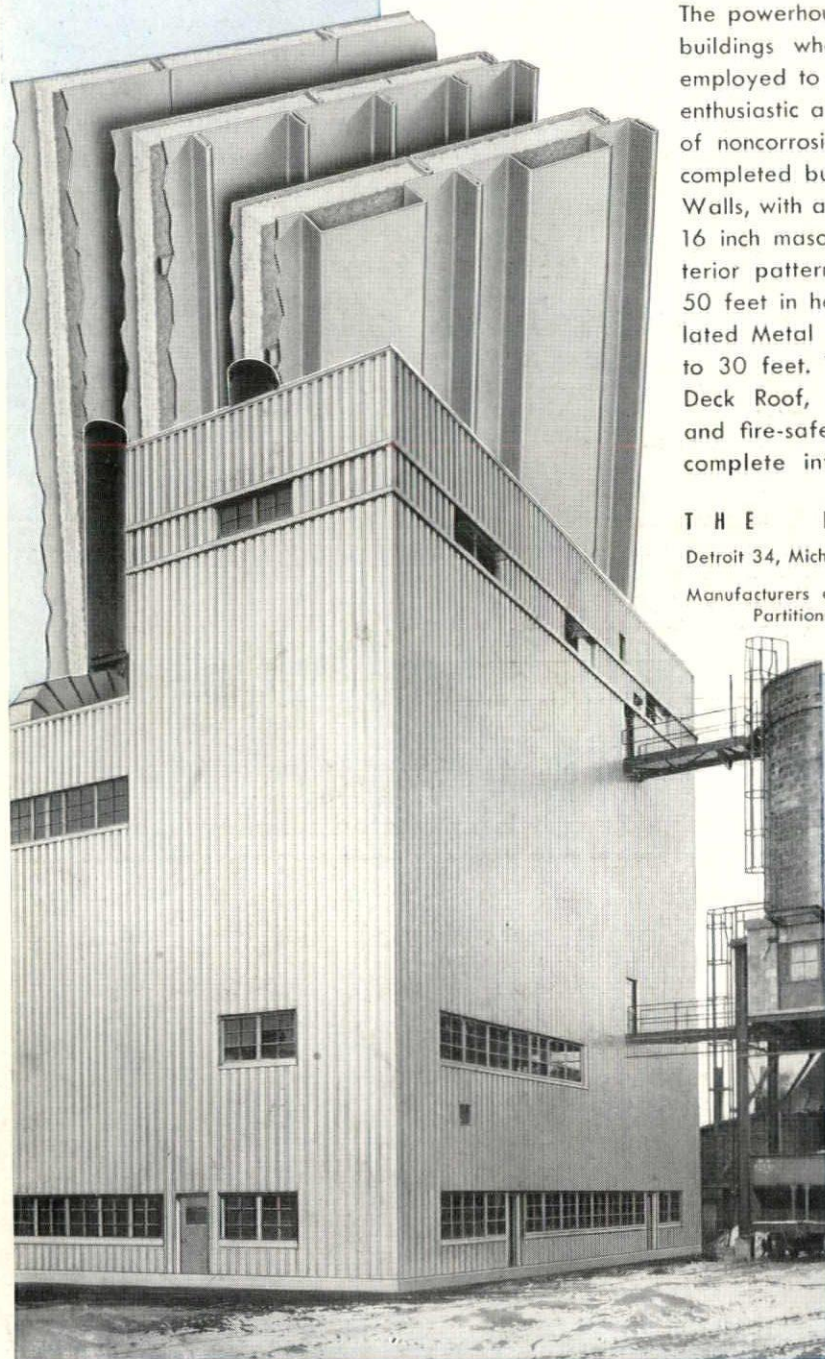
for INDUSTRIAL and COMMERCIAL BUILDINGS  
ALUMINUM, STAINLESS or GALVANIZED STEEL

The powerhouse illustrated below is typical of many industrial buildings where Mahon Insulated Metal Walls have been employed to good effect . . . both architects and owners are enthusiastic about the economy in construction, the permanence of noncorrosive metals, and the over-all appearance of the completed buildings. Mahon Field Constructed Insulated Metal Walls, with an over-all "U" Factor equivalent to a conventional 16 inch masonry wall, are available in the three distinct exterior patterns shown at left. Walls may be erected up to 50 feet in height without horizontal joints. Prefabricated Insulated Metal Wall Panels are also available in any length up to 30 feet. These metal walls, together with a Mahon Steel Deck Roof, provide the ultimate in economy, permanence, and fire-safety in modern construction. See Sweet's Files for complete information, or write for Catalog No. B-51-B.

THE R. C. MAHON COMPANY

Detroit 34, Mich. • Chicago 4, Ill. • Representatives in Principal Cities

Manufacturers of Insulated Metal Walls; Steel Deck for Roofs, Floors and Partitions; Rolling Steel Doors; Grilles; and Underwriters' Labeled Rolling Steel Doors and Fire Shutters.



Mahon Insulated Metal Walls Employed in the Construction of a New Powerhouse for Fairbanks-Morse & Co., Beloit, Wisconsin. Stone & Webster, Architects & Contractors.

# MAHON