

WEEKLY BULLETIN



MICHIGAN SOCIETY OF ARCHITECTS

OFFICERS

ROGER ALLEN, President
ADRIAN N. LANGIUS, 1st V.-President
EARL W. PELLERIN, 2nd V.-President

JOSEPH W. LEINWEBER, 3rd V.-President
L. ROBERT BLAKESLEE, Secretary
MALCOLM R. STIRTON, Treasurer

DIRECTORS

TALMAGE C. HUGHES, Executive Secretary
ROBERT B. FRANTZ, GEORGE M. McCONKEY
WILLIAM E. KAPP, JOHN C. THORNTON
HARRY L. MEAD, EERO SAARINEN
DONALD A. KIMBALL

Published Weekly. Subscription Price 50c per year. (Non-members \$1.00) 10 cents per copy.

EDITOR—TALMAGE C. HUGHES

120 Madison Avenue, Detroit 26, Michigan

E. B. FAUQUIER—ADVERTISING MANAGER

Volume 20

DETROIT, MICHIGAN, JANUARY 1, 1946

Number 1

CHEVROLET MOTOR DIVISION

GENERAL MOTORS CORPORATION, LOS ANGELES, CALIFORNIA

Albert Kahn, Associated Architects & Engineers, Inc.

ANOTHER PROJECT in the extensive program of expansion of the Chevrolet Motor Division of General Motors is now under construction in the Los Angeles area, to add 400 cars and trucks daily to the anticipated needs of West Coast buyers.

The development, recently announced by M. E. Coyle, General Manager of the Chevrolet Division and Vice President and Director of General Motors Corporation, consists of three major buildings on a 100-acre site fronting on Van Nuys boulevard to the West and adjacent to the main line of the Southern Pacific Railroad to the South. Spur lines as well as trucking facilities will service the operating units.

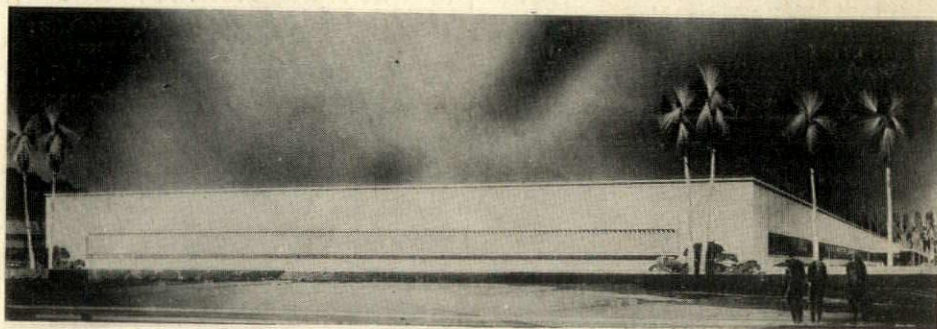
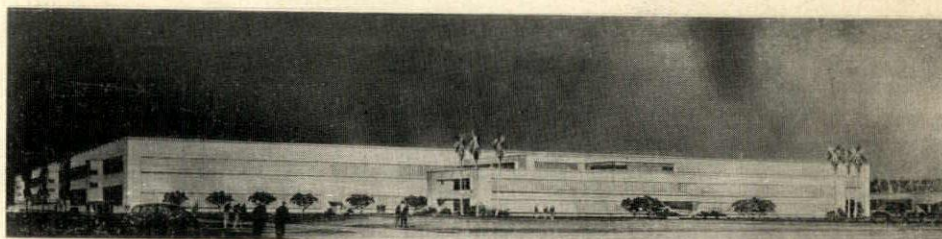
The principal units consist of parts warehouse now under construction, two-story office building, and a main building housing Fisher Body and Chevrolet assembly operations under one roof.

Plans are being prepared by Donald B. Parkinson, architect of Los Angeles, with Albert Kahn Associated Architects and Engineers, Inc. as consultants. The overall pattern follows closely the Kahn-designed expansion of Chevrolet production facilities at Flint, Michigan, which is now under way.

One interesting architectural innovation, however, consists of "sunshade" type windows on the Western exposures of the Van Nuys project. While these sun-deflecting windows have been used in Brazil, the Van Nuys development is believed to mark their first industrial application in this country.

The "sunshade" design consists of deep set window fronted by fixed panels which resemble a venetian blind stood vertically. Concrete panels are specified for these shields. Each panel is two feet long and seven feet high and is so angled that sun rays cannot reach the window glass and transmit heat to the interior.

The three major buildings all have this type window to the West, while a continuous band of steel sash seven feet high extends the full depth of the South, East and North exposure. All buildings are of steel frame and concrete constructions. All have flat, metal deck roofs. There are no basement areas.



Two Views of Chevrolet's New L. A. Plant

Relatively uniform climate conditions permit exposed concrete wall surfaces exterior and interior, decorated with the sash band already mentioned. Walls to the East are less permanent than on the other three sides, however, to permit expansion in that direction if desirable at some future date.

The parts building, a one-story structure 240' by 360', is located at the South edge of the property adjacent to the Southern Pacific tracks. Railway dock areas are provided on one side of the building and truck facilities on the other. Between the parts building and the main plant is an open parking area.

The two-story office building, with interesting landscaping in front, extends 300' North and South along Van Nuys boulevard and is 50' deep. A two-story extension in the rear, housing an office workers' cafeteria on the second floor and a garage for company cars on the first, connects the general offices with the main plant.

This building is 710' wide and 850' deep, with Fisher Body occupying the Northern half and Chevrolet final assembly the Southern. Separate parking lots are provided for Chevrolet and Fisher employees adjacent to their work areas, each lot

(See CHEVROLET Page 3)

O. W. BURKE CO.

GENERAL CONTRACTOR

FISHER BUILDING

MADison 0810 Detroit, Mich.

UNiversity 2-3413

DARIN and ARMSTRONG

Incorporated

GENERAL CONTRACTORS

2041 FENKELL AVENUE DETROIT

Glanz & Killian Co.

Contractors

PLUMBING — HEATING — VENTILATING
FIRE PROTECTION SPRINKLER SYSTEMS
1761 West Forest Avenue Temple 1-7820

Marsh Wall Products, Inc.

EXCLUSIVE MANUFACTURERS OF DECORATIVE

Marlite

DOVER, OHIO

Division Engineer, Wm. E. Ogden
6132 Cass Avenue Detroit 2, Michigan
MADison 6300

Punch & Judy Theatre

Kercheval at Fisher Road Ni. 3898

TUESDAY—WEDNESDAY—THURSDAY JAN. 1-2-3

Humphrey Bogart—Alexis Smith

"CONFLICT"

FRIDAY—SATURDAY JANUARY 4-5

Eddie Bracken—Veronica Lake

"OUT OF THIS WORLD"

Murray W. Sales & Co.

Wholesale

Plumbing and Heating Supplies

Flint — DETROIT — Pontiac
801 W. Baltimore MA. 4200

HANLEY COMPANY

E. F. Zerga, Mgr.

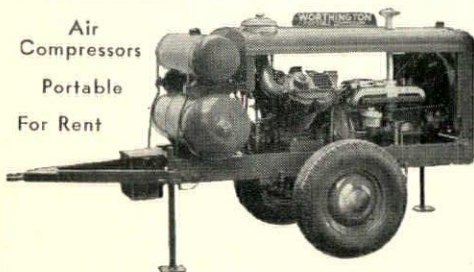
FACE BRICK UNGLAZED FACING TILE
FLOOR BRICK CERAMIC GLAZED TILE
CERAMIC GLAZED BRICK FLOOR TILE
ACID BRICK

14545 Schaefer VE. 7-3200 Detroit 27, Mich.

Air
Compressors

Portable

For Rent

60 to 500 cu. ft.—By Day, Week or Month
All Accessories FurnishedW. H. ANDERSON CO., INC.
Detroit, Michigan

CINDER BLOCK INC.

VERmont 6-5500

9303 Hubbell Avenue
Bet. Chicago and Joy

H. H. Dickinson Co.

COMPLETE BUILDERS SUPPLIES

Armored Concrete Curbing
Masters' Builders Products
HEATILATORS — ASPHALTS

5785 Hamilton Avenue MADison 4950

Koenig Coal & Supply Co.

Certified Concrete

CONCRETE — FUEL OIL — COAL

Main Office: 1486 Gratiot Ave. CADillac 1584

NELSON COMPANY

Plumbing, Heating and Air Conditioning

Supplies

Wholesale

Main Office and Display Room
2604 FOURTH AVE. PHONE RA. 4162Branches
Royal Oak — Grosse Pointe — Ann Arbor

The Esslinger-Misch Co.

General Builders

159 East Columbia Street RANDolph 7021
DETROIT, MICHIGAN

FREDERIC B. STEVENS, INC.

FACE BRICK, ENAMELED BRICK, GLAZED
BRICK AND TILE, ROOFING AND
FLOOR TILERepresentatives for
ANTI-HYDRO—For Hardening and Waterproofing
ConcreteTHIRD AND LARNED STREETS
RANDolph 5990 DETROIT, MICH.

Viking Sprinkler Co.

Fire Protection Engineers & Contractors
Automatic Sprinkler Systems

Also a Complete Line of Pre-Action Devices

1125 East Milwaukee Avenue
MADison 4230 DETROIT

Brick For Permanence

Tile for Beauty and Endurance

Belden-Stark Brick Co.

14305 Livernois Detroit 4, Michigan

HOgarth 1331 - 1332 - 1333



Long Experience — Adequate Facilities

Clean Cut Business Procedure

BLUE PRINTING AND PHOTOSTAT
REPRODUCTIONS

O & O Blue Print & Supply Co.

CADillac 0005-0011

77 Sibley

CADillac 4890

F. H. Martin Construction Company

955 E. Jefferson Ave.

Detroit, Michigan

COUSE & WESTPHAL

General Builders

12740 Lyndon Avenue

HOgarth 3525

Detroit, Mich.

FOX THEATRE

Now Showing

Gene Tierney - Cornel Wilde - Jeanne Crain

... in ...

"LEAVE HER TO HEAVEN"

— CLASSIFIED —

BRAUN LUMBER CORP. — TO. 8-0320, Davison
and G.T.R.R.F. M. SIBLEY LUMBER COMPANY — 6460 Ker-
cheval Avenue, Filtroy 5100RESTRICK LUMBER COMPANY — 14400 Wyoming,
HOgarth 4830

TURNER-BROOKS, INC.

Floor Covering Contractors

All Types Floor, Wall and Ceilings

ASPHALT TILE LINOLEUM
RUBBER TILE CORK TILE
CARPETS RUGS
WINDOW SHADES VENETIAN BLINDSACOUSTICAL MATERIALS
WOOD MOSAIC PARKAY FLOORS
MARLITE TILE9910-20 Dexter Blvd.
Detroit, Michigan

TO. 8-2470

• CELOTEX - CELO - BLOCK

• COLD STORAGE INSULATION

PIPE and BOILER COVERING

GREAT NORTHERN ENGINEERING CO.

13107 Grand River Ave., Detroit 27

HO. 0400

CELOTEX

ROCKWOOL INSULATION

COMMERCIAL and DOMESTIC

GREAT NORTHERN INSULATING CO.

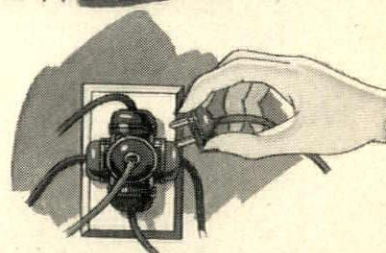
13105 Grand River Ave., Detroit 27

HO. 2166

*There isn't always room
for one more*



THERE isn't room for one more in this bridge foursome—even for a kibitzer. . . all he does is cause trouble for the players. And one appliance too many on an electrical circuit may be the cause of that troublesome blown fuse. Many people are accustomed to inadequate wiring. But overloaded circuits are not your only handicap to home happiness if you have inadequate wiring. It may mean improper distribution of outlets—not having the electric roaster where you want it, because there's no outlet convenient—or maybe Dad can't plug in his new electric shaver where he wants it. Adequate wiring means a home for you "as good as new"—good enough to use every new appliance you'll want in your home. And, of course, if your plans for tomorrow include a brand-new home, it's doubly important that your plans and specifications be checked for adequate wiring.



This is one of a series of advertisements prepared in cooperation with the Electrical Association of Detroit in the interest of insuring adequate wiring for every home in this area. Any house wired today should have enough properly spaced convenience outlets, enough circuits and large enough wire sizes for tomorrow's electrical living. It should accommodate the new frozen-food cabinets, electric ranges, automatic laundries, electric dishwashers and many other electrical appliances that will make living pleasanter and easier. When you build or remodel, be sure your home "measures up" in this important respect.



THE DETROIT EDISON CO.

mill operators claim they cannot give because of the O.P.A. price ceilings on their product.

In normal times there is carried in stock at the mills and wholesale yards at least 10 to 12 billion feet, and at least half that much in the retail yards. At present there is no stock on hand in the mill yards and very little in the hands of the retailers.

For months past, most of the cuts has been sawed and placed in shipment with no drying, where ordinarily it is either air-dried or put through dry kilns. This shipping of green stock has been a tremendous load on the railroads, and has made for extra cost in additional freight.

The reason that this stock has not been dried in the mills is the heavy demand and the lack of man-power for handling the lumber through the yard or kiln.

Colonel Greeley, Secretary-Manager of the West Coast Lumber Manufacturing Association, advised me that the association's mills cutting fir, hemlock, etc., need 1,500 extra men to bring the cut up to where it would take care of demands.

I was advised by a wholesaler in Portland, Oregon, that buyers were in the field from European countries; England wanting 105 million feet; France, 250 million feet; Holland and Belgium each 200 million feet, and that they were paying more than ceiling prices.

My observations from the contacts and information I had indicated that it would take several months before there will be any perceptible change in the situation or any volume of dry lumber.

MR. C. L. LAUDE, General Sales Manager of the Huron Portland Cement announces the addition of Joseph A. Kauer to the Technical Service staff under George A. Mansfield, Director.

Mr. Kauer spent a number of years with the Ohio Department of Highways until 1942 when he joined the U. S. Engineers to take charge of all laboratory and field concrete activities for the McArthur Lock at Sault Ste. Marie, Michigan.

On January 1, 1944, Mr. Kauer was selected as manager of the Ready-Mix Concrete Engineering Service in Cleveland, Ohio and remained in that capacity

until his recent association with the Huron Portland Cement Company.

With this background in engineering and concrete experience, the Huron Portland Cement Company will be able to give greater assistance to users of cement in the concrete and concrete products fields.

WANTED

Experienced Architectural Draftsmen.
Derrick & Gamber, 515 Hammond Bldg.,
Detroit 26, Mich. RAndolph 3175.

WANTED

Experienced Architectural
Draftsmen, Good Working
Conditions, Good Salaries

ALDEN B. DOW

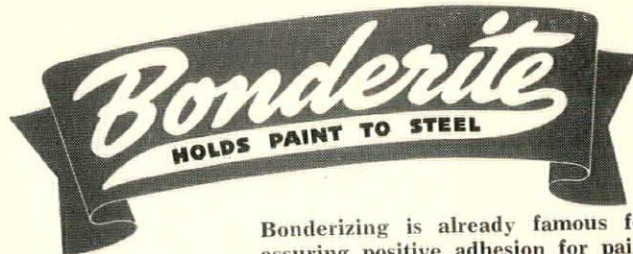
Post. St., Midland, Mich.

DAY and EVENING COURSES

in
ENGINEERING and
CHEMISTRY

Spring Courses Start
February 4

DETROIT INSTITUTE OF
TECHNOLOGY
303 Downtown Y.M.C.A.
Bldg., Detroit



Bonderizing is already famous for assuring positive adhesion for paint finishes on all types of sheet metal building equipment . . . Provides effective protection for steel sash, electrical, air conditioning and heating units.

PARKER RUST PROOF COMPANY

DETROIT, MICHIGAN

Structural Steel Fabricators and Erectors also Welded Steel Products

WHITEHEAD & KALES

VI. 1-8300

DETROIT

Chevrolet—Con't. from Page One

with a capacity of more than 500 cars. Peak employment is estimated at 1600 people.

There are likewise separate personnel facilities for the two groups of workers. Each has separate entrances, employment offices, lockers, showers, toilets, X-ray and physical therapy rooms for treatment of minor injuries. These are housed in the West end of the plant, in an area 50' deep and extending the full width of the structure. Each group of personnel offices is almost an exact duplicate of the other.

The main plant is part two-story and part one-story construction. Centrally located above the personnel offices is a large kitchen which services a Fisher cafeteria to the North, a Chevrolet cafeteria to the South and an office workers' cafeteria to the West above the garage. All are at the second floor level and adjacent to the central kitchen.

In the main plant columns are spaced 50' apart each way. In the Fisher section, the finishing ovens and spring and cushions sub-assemblies are for the most part located upstairs. The main car assembly line runs the length of the Chevrolet section, with storage of parts and sub-assemblies on either side.

Because of climate conditions, space heaters are located infrequently throughout the project as needed. Ventilating fans provide free air movement in the kitchen, toilets and inside office areas, with provision made in the office building for complete ventilation at some future date if desired.

There is no boiler house, all power and service requirements being met by the existing public utility systems.

Installation of fluorescent lighting will assure ample level of light in all working areas. In the office building there will be some diminution of natural light as a result of the "sunshade" installations at the West end, but much cooler and more comfortable working conditions are greatly off-setting factors.

Other developments on the site include an 850' test track with turn-around bottoms at either end, haul-away facilities, car storage, pump house, acetylene building and other service adjuncts.

The assembly plant at Oakland, California, which Chevrolet operated since 1916 was taken over by the government during the war. It is shortly to be returned to the owners, Mr. Coyle said, and reconverted to Chevrolet assembly at pre-

war capacity. The Van Nuys development, therefore, will represent additional car and truck capacity to meet the expanded market potential, particularly in Southern California.

HAROLD S. ELLINGTON, of the Detroit architectural and engineering firm of Harley, Ellington and Day, has left for a tour of Latin American countries to make a study of beverage and brewing plants.

Harley, Ellington and Day specialize in brewery and beverage plant architecture, and have extensive dealings throughout South America, the West Indies and Europe.

Mr. Ellington's tour is being made in furtherance of the firm's consistent good neighbor policy toward the Latin American countries.

Accompanying Mr. Ellington on his tour will be William U. Troncoso, supervising engineer with the firm.

Born in Mexico City, Mr. Troncoso is the son of Dr. Manuel Urik Troncoso, of the faculty of Columbia University.

He received his training in the United States and has had more than twenty-five years' experience with the leading architectural firms in the design and construction of a wide variety of projects.

Mr. Troncoso speaks Spanish, French and Portuguese fluently, and is entirely familiar with the business methods and conditions in South American countries.

Art Classes

Drawing, Painting, Clay Modeling, Water Color,
Fashion and Commercial Art
Saturday Morning Children's Classes

**ART SCHOOL OF THE
SOCIETY OF ARTS & CRAFTS**

47 Watson Street, Detroit Cadillac 4721

PLASTI-GLAZE



Plasti-Glaze the Post War Glazing Compound to specify. Made from bodied oils and special pigments. Weatherometer tests prove that Plasti-Glaze when properly applied and maintained will last as long as the sash. Dries rubbery hard, not rock hard, easy to apply, easy to remove.

For long life, weather and air-tight glazing use
America's Leading Glazing Compound Plasti-Glaze.

PLASTIC PRODUCTS CO. INC.
DETROIT • CHICAGO • JERSEY CITY

The Lumber Situation

By Alton J. Hager

Hager & Cove Lumber Company, Lansing

A Talk Before The Michigan Construction Industry Conference

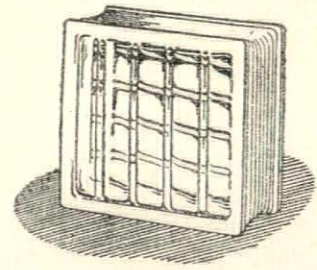
Lumber for the past two years has been about the most critical construction item for several reasons. At the start of the war it was used in many places where formerly many critically strategic materials had hitherto been used. For the four years of 1942, 1943, 1944 and 1945, at least 60% of the production of about 125 billion feet in lumber had gone into the war effort.

Many people have thought since VJ Day that early shipments could be made for civilian construction use. I just returned last Thursday from a three weeks trip to the West Coast, where about two thirds of the lumber is cut, and find after contact with both mill operators and wholesalers these conditions:

The army has cancelled a large percentage of their orders, but the material for these orders was not yet out — it is still in the trees. Further, it is expected that they will require a considerable amount of material.

The navy did not cancel but a very small percentage of the orders they had placed, which, as was the case with the army material, was yet uncut.

The A.F. of L. Loggers and Millmen had voted six to one to go on strike October 1st unless their wages were raised from \$.90 to \$1.10 per hour, which the



GLASS BLOCK FOR YOUR PLANT—NOW!

Critical materials are not required to erect glass block panels in that new plant addition—or in replacing wornout sash in existing buildings. Get Insulux Glass Block at pre-war prices—without delay.

CADILLAC GLASS CO.

LENOX 4940

2570 HART AVENUE

DETROIT

STANDARD COTTON INSULATION

- Moisture Proof
- Best at Lowest Cost
- Greater Heat Resistance
- Vermin Proof

Tests Prove Greater Efficiency of Cotton

Warren Fibre Products Co.

14290 Meyers Road Detroit 27, Michigan
Telephone HOgarth 5675

PAID

Detroit, Mich.
Permit No. 4123

The Octagon,
1741 New York Ave.,
Washington, D.C..

POSTMASTER: If forwarded, or undeliverable, FOR ANY REASON, notify sender of new address, or reason, on form 3547, postage for which is guaranteed.

BEAUTIFUL INTERIORS

are created with wall paper
furnished by

FISHER WALL PAPER CO.

We have a competent staff, willing to show you the best in style and color, the leading Wall Paper Manufacturers of the country offer.

Let Us Help You

5840 Woodward Avenue
6 LOCAL BRANCHES IN DETROIT

"Ask Your Decorator"
He will tell you that

Fisher Wall Paper Co.

are Michigan's largest wall paper distributors.

John H. Freeman

Finish Hardware

Architects Bldg.

Detroit 1

Phone

Temple 1-6760

Members American Society Architectural
Hardware Consultants

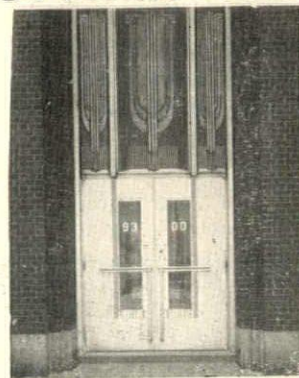
MOYNAHAN

BRONZE COMPANY

Always Forward

WITH DESIGNS, TECHNICS
AND MANUFACTURING
FACILITIES TO ASSIST
YOU IN

POSTWAR WORK

Y
E
S
T
E
R
D
A
YT
O
M
O
R
R
O
W

9071 ALPINE AVENUE • DETROIT 4, U.S.A.

BLUE PRINTS

PHOTOCOPY PRINTS

OZALID DIRECT PRINTS

DRAFTING ROOM FURNITURE

DRAWING MATERIALS

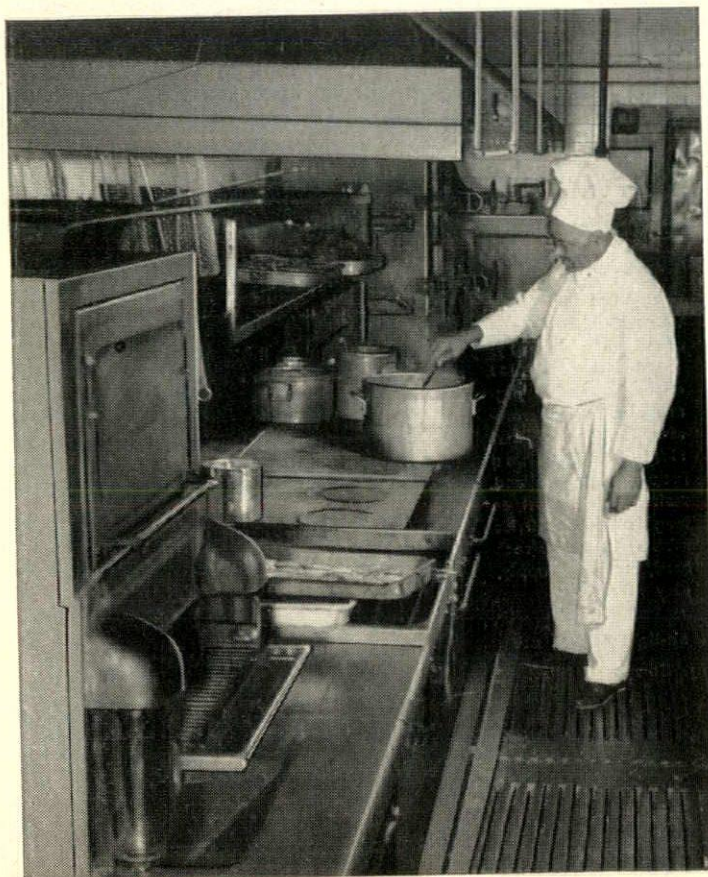
DUNN BLUE PRINT CO.

"At Your Service—Any Time—Any Where"

5922 SECOND

TR. 1-7525

DETROIT, MICH.



DETROIT'S BEST HOTELS

**Insist on Gas for
Speedy, Fine Cooking**

The Wardell-Sheraton Hotel (kitchen pictured at left), is just one of the many places in Detroit using Gas for cooking. Always dependable, fast and economical, Gas is the ideal fuel to make fine, precision cooking easier, speedier, better!

**MICHIGAN CONSOLIDATED
GAS COMPANY**

415 Clifford

• CHerry 3500

WEEKLY BULLETIN



MICHIGAN SOCIETY OF ARCHITECTS

OFFICERS

ROGER ALLEN, President
ADRIAN N. LANGIUS, 1st V.-President
EARL W. PELLERIN, 2nd V.-President
JOSEPH W. LEINWEBER, 3rd V.-President
L. ROBERT BLAKESLEE, Secretary
MALCOLM R. STIRTON, Treasurer

TALMAGE C. HUGHES
Executive Secretary

DIRECTORS

ROBERT B. FRANTZ
WILLIAM E. KAPP
HARRY L. MEAD
GEORGE M. McCONKEY
JOHN C. THORNTON
EERO SAARINEN
DONALD A. KIMBALL

Published Weekly. Subscription Price 50c per year. (Non-members \$1.00) 10 cents per copy.

EDITOR—TALMAGE C. HUGHES

120 Madison Avenue, Detroit 26, Michigan

E. B. FAUQUIER—ADVERTISING MANAGER

Volume 20

DETROIT, MICHIGAN, JANUARY 8, 1946

Number 2

Art Center In Every British Town

By HUBERT E. BIRD

British broadcaster and feature writer

THE POST-WAR translation of Britain's wartime Council for the Encouragement of Music and the Arts (CEMA) into the official Arts Council is one of the few blessed legacies of six long years of World War II. As CEMA, the Arts Council's achievements were real and impressive. It found among ordinary thinking men and women a hunger for the best in music, painting, sculpture and the drama, which only those who lived in the big cities had hitherto been able to satisfy. Undaunted, but deeply stirred by the wartime disasters of 1940, these

ordinary people became more articulately aware of their spiritual needs, and the State recognized the reality of these wants.

With Government aid, CEMA took the Arts to the people - in concerts and ballets, plays and exhibitions. These it presented in factory canteens, provincial town-halls, churches, libraries, and departmental stores, in hangars and show-rooms and Nissen huts - and, very rarely, in a theatre or concert hall which had been properly designed for the purpose. In the big cities, theatres and concert halls were not lacking. But in the medium-sized industrial and market towns of the provinces the need for some suitable building where plays and concerts and exhibitions could be staged proved to be acute. Yet it is in just such towns, with 15,000 to 30,000 inhabitants, that a considerable proportion of Britain's urban population dwells.

Special Hall Wanted

Their needs are special needs. In towns of this size it is not economically possible to maintain a theatre, a concert-hall and an art gallery separately. Here what is wanted is a single multi-purpose hall, where occasional visiting drama-companies, orchestras, concert artists and traveling exhibitions can be accommodated,

and where local amateur dramatic and musical societies and art clubs can stage their shows.

Out of its wartime experience the Arts Council has been able to assess these needs, and now it has published a small book called "Plans for an Arts Center," for the guidance of local authorities in these smaller towns, where, it is felt, the

proven demand for social and cultural relaxation should in the settled days of peace be more adequately met.

The purpose of the Council is to present plans for an Arts Center of a size appropriate to towns of 15,000 to 30,000 inhabitants. These plans have been worked out in detail in close consultation with Britain's Ministry of Town and Country

(See ART CENTER—Page 3)

Meeting of the Detroit Chapter

THE AMERICAN INSTITUTE OF ARCHITECTS

Rackham Memorial Building, 100 Farnsworth Ave., Detroit

WEDNESDAY, JANUARY 9, 1946

M.S.A. Board meeting, 2:00 p. m.; Chapter Board, 4:00 p. m.; Dinner, 6:30 p. m.

SPEAKER: Roger Allen, A.I.A., President, Michigan Society of Architects;
Architect pre-eminent, author, columnist, lecturer.

SUBJECT: HUMOR IN HOUSE DESIGNING

Mr. Allen has gained national recognition for his humorous, as well as serious, writing and speaking on architectural subjects. His book, BACK-FIRED at RANDOM, has just been published, containing selections from his daily column, FIRED AT RANDOM, appearing in the Grand Rapids Press.



GIBRALTAR ALL PURPOSE CONCRETE
"The all-purpose ready mixed dry concrete"—a scientifically prepared mixture of dehydrated sand and gravel with cement to obtain the maximum strength.

GIBRALTAR BRICK-SET MORTAR
The NEW Dry Ready Mixed Brick Mortar Contains Everything
"SPECIFY GIBRALTAR FLOORS"

GIBRALTAR FLOORS INC.
48 State Fair Avenue West
Telephone Townsend 8-0045

Detroit, Mich.
Telephone Townsend 8-0044

O. W. BURKE CO.

GENERAL CONTRACTOR

FISHER BUILDING

MAdison 0810

Detroit, Mich.

UNiversity 2-3413

DARIN and ARMSTRONG

Incorporated
GENERAL CONTRACTORS

2041 FENKELL AVENUE

DETROIT

Glanz & Killian Co.

Contractors

PLUMBING — HEATING — VENTILATING
FIRE PROTECTION SPRINKLER SYSTEMS
1761 West Forest Avenue TEmple 1-7820

Marsh Wall Products, Inc.

EXCLUSIVE MANUFACTURERS OF DECORATIVE

Marlite
DOVER, OHIODivision Engineer, Wm. E. Ogden
6132 Cass Avenue Detroit 2, Michigan
MAdison 6300

Punch & Judy Theatre

Kercheval at Fisher Road

Ni. 3898

FRIDAY-SATURDAY

JANUARY 11-12

Cornel Wilde—Phil Silvers

"A THOUSAND AND ONE NIGHTS"

SUNDAY-MONDAY-TUESDAY JANUARY 13-14-15

Lizabeth Scott—Robert Cummings

"YOU CAME ALONG"

Murray W. Sales & Co.

Wholesale

Plumbing and Heating Supplies

Flint — DETROIT — Pontiac
801 W. Baltimore MA. 4200

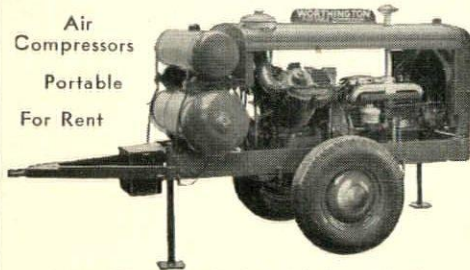
HANLEY COMPANY

E. F. Zerga, Mgr.

FACE BRICK UNGLAZED FACING TILE
FLOOR BRICK CERAMIC GLAZED TILE
CERAMIC GLAZED BRICK FLOOR TILE
ACID BRICK
14545 Schaefer VE. 7-3200 Detroit 27, Mich.Air
Compressors

Portable

For Rent

60 to 500 cu. ft.—By Day, Week or Month
All Accessories FurnishedW. H. ANDERSON CO., INC.
Detroit, Michigan

CINDER BLOCK INC.

Vermont 6-5500

9303 Hubbell Avenue
Bet. Chicago and Joy

H. H. Dickinson Co.

COMPLETE BUILDERS SUPPLIES

Armored Concrete Curbing
Masters' Builders Products
HEATILATORS — ASPHALTS

5785 Hamilton Avenue

MAdison 4950

Koenig Coal & Supply Co.

Certified Concrete

CONCRETE — FUEL OIL — COAL

Main Office: 1486 Gratiot Ave. CADillac 1584

NELSON COMPANY

Plumbing, Heating and Air Conditioning

Supplies
WholesaleMain Office and Display Room
2604 FOURTH AVE. PHONE RA. 4162Branches
Royal Oak — Grosse Pointe — Ann Arbor

The Esslinger-Misch Co.

General Builders

159 East Columbia Street RANDolph 7021
DETROIT, MICHIGAN

FREDERIC B. STEVENS, INC.

FACE BRICK, ENAMELED BRICK, GLAZED
BRICK AND TILE, ROOFING AND
FLOOR TILERepresentatives for
ANTI-HYDRO—For Hardening and Waterproofing
Concrete
THIRD AND LARNED STREETS
RANDolph 5990 DETROIT, MICH.

Viking Sprinkler Co.

Fire Protection Engineers & Contractors
Automatic Sprinkler SystemsAlso a Complete Line of Pre-Action Devices
1125 East Milwaukee Avenue
MAdison 4230 DETROIT

Brick For Permanence

Tile for Beauty and Endurance

Belden-Stark Brick Co.

14305 Livernois Detroit 4, Michigan

HOgarth 1331 - 1332 - 1333

Long Experience — Adequate Facilities
Clean Cut Business Procedure
BLUE PRINTING AND PHOTOSTAT
REPRODUCTIONS

O & O Blue Print & Supply Co.

CADillac 0005-0011

77 Sibley

CADillac 4890

F. H. Martin Construction Company

955 E. Jefferson Ave.

Detroit, Michigan

COUSE & WESTPHAL

General Builders

12740 Lyndon Avenue

Detroit, Mich.

HOgarth 3525

FOX THEATRE

Now Showing

Gene Tierney - Cornel Wilde - Jeanne Crain

... in ...

"LEAVE HER TO HEAVEN"

— CLASSIFIED —

BRAUN LUMBER CORP. — TO. 8-0320, Davison
and G.T.R.R.F. M. SIBLEY LUMBER COMPANY — 6460 Ker-
cheval Avenue, Fltzy 5100RESTRICK LUMBER COMPANY — 14400 Wyoming,
HOgarth 4830

TURNER-BROOKS, INC.

Floor Covering Contractors

All Types Floor, Wall and Ceilings

ASPHALT TILE LINOLEUM
RUBBER TILE CORK TILE
CARPETS RUGS
WINDOW SHADES VENETIAN BLINDS
ACOUSTICAL MATERIALS
WOOD MOSAIC PARKAY FLOORS
MARLITE TILE9910-20 Dexter Blvd.
Detroit, Michigan

TO. 8-2470

• CELOTEX - CELO - BLOCK

- COLD STORAGE INSULATION
- PIPE and BOILER COVERING

GREAT NORTHERN ENGINEERING CO.

13107 Grand River Ave., Detroit 27

HO. 0400

CELOTEX

ROCKWOOL INSULATION

COMMERCIAL and DOMESTIC

GREAT NORTHERN INSULATING CO.

13105 Grand River Ave., Detroit 27

HO. 2166

Art Center—(Cont'd from Page 1)

Planning and should be considered as suggestions only and not rigid building prototypes. Here they are discussed simply but comprehensively, and the book contains pictures of models and advice on siting, decoration and management.

"There are three main components in this Arts Center, and each is planned to function independently or in combination with the others. They can be arranged in a variety of ways to suit varying sites. These are: (1) A hall to seat 600, with stage, property store, paint shop, studio, dressing rooms and store rooms. (2) An exhibition or lecture room, with adjoining reading or committee room, and stores. (3) A restaurant to seat 200, with bar, service counter, kitchen, store rooms, wash-up and staff office, foyer and corridor complete the indoor accommodation."

Near Civic Center

In the Council's recommendation it is stressed that the Arts Center should be near to the center of the town's civic and commercial activities. A site of one acre would be adequate to an efficient layout, but two acres are desirable as giving more scope for the orderly arrangement of paved terrace, lawns and shrubs, which is part of the plan. Adjacent car-parks, linked to a spacious foyer by a covered way, have a place in this lay-out.

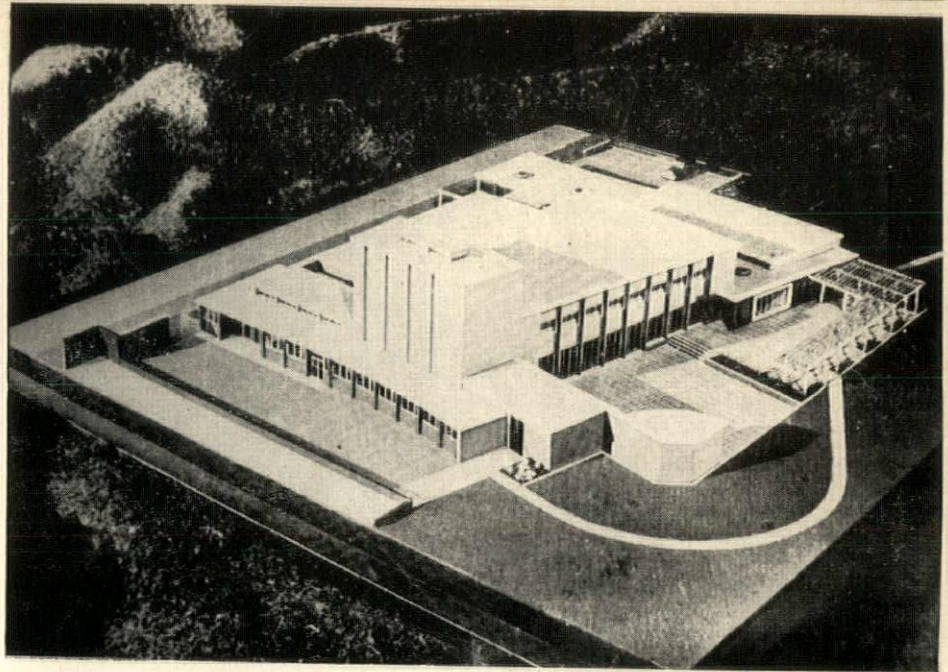
Sited to function separately, but equally accessible from the foyer, are the multi-purpose hall, the restaurant and the exhibition room. A series of double doors make it possible for the foyer to become part of the exhibition room, and provide easy access to current exhibitions for the concert audiences during intervals. An adjacent store-room takes, when unwanted, the furniture and fittings variously necessary to its function as lecture room and display gallery. Clerestory lighting is supplemented by glazed folding doors opening on to lawn. Part of the exhibition room can be closed off with sliding doors to make a reading room, available for committee meetings and rehearsals.

In all the various lay-outs the multi-purpose hall is sited in close relation to the lecture room and restaurant. Its stage is adequate for plays, ballets, films, concerts, lectures and debates. Its 600 seats are movable if and when the hall is required for dances or social gatherings. Folding glazed doors lead to an open-air terrace, intended for out-of-door concerts and dancing in summer.

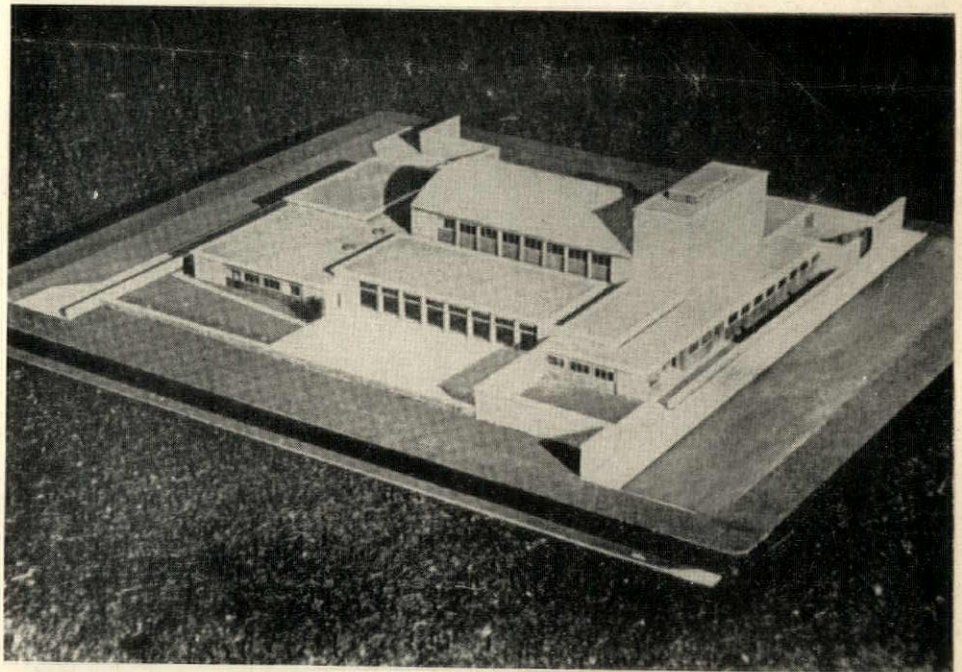
Movable Platform

The stage fittings and film projection units are designed to professional standards. The stage can be extended for orchestral concerts by the addition of a movable platform over the orchestra pit. This projects 15 feet and rests on sliding steel rails which run under the stage floor.

The plans, given in outline only, are put



Model of Arts Centre, showing view from the service road with restaurant and terraces on the left. Entrance to kitchens in the foreground, with dressing rooms and stage tower behind.



Model of Arts Centre, showing view from the back of the hall, the terraces and bandstand, and entrance into the studio and property store.

forward as variations on certain carefully considered principles of lay-out logically related to the specific functions which the Arts Center is designed to perform. These being adhered to, the three main elements in the plan are capable of infinite adaption to the exigencies of particular sites without

(See ART CENTER—Page 4)

WANTED

EXPERIENCED

ARCHITECTURAL DRAFTSMEN

DERRICK AND GAMBER

CAadillac 3175 - 515 Hammond Bldg.
Detroit 26, Michigan

Day and Evening Courses

in

Engineering and Chemistry

Spring Courses Start February 4

**DETROIT INSTITUTE OF
TECHNOLOGY**

303 Downtown Y.M.C.A. Bldg., Detroit

WANTED

EXPERIENCED ARCHITECTURAL
DRAFTSMEN, GOOD WORKING
CONDITIONS, GOOD SALARIES. —

ALDEN B. DOW,

POST. ST., MIDLAND, MICH.

1946 JAN 17 AM 8:36

WASHINGTON, D. C.

The Octagon,
1741 New York Ave.,
Washington, D.C..

Sec. 562 P.L. & R.
U. S. POSTAGE

PAID

Detroit, Mich.
Permit No. 4123

POSTMASTER: If forwarded, or undeliverable, FOR ANY REASON, notify sender of new address, or reason, on form 3547, postage for which is guaranteed.

Art Center—(Cont'd from Page 3)
any loss of that ease of access and ingenious economy of space that mark good planning.

A series of traveling cabinets have been made for the Arts Council by the Ministry of Town and Country Planning, which show three models of interiors—foyer, hall, and restaurant—as well as models of the

complete centre from without. These are being sent on tour through the medium-sized towns whose needs they are designed to meet, and they have already met with the approval that the plans and the high finish of the models deserve.

STANDARD COTTON INSULATION

- Moisture Proof
- Best at Lowest Cost
- Greater Heat Resistance
- Vermin Proof

Tests Prove Greater Efficiency of Cotton

Warren Fibre Products Co.

14290 Meyers Road Detroit 27, Michigan
Telephone HOgarth 5675

The Toledo Plate & Window Glass Co. Glass Jobbers & Glazing Contractors

Distributors of
WEAVER-WALL Asphalt Shingles
and
ASBESTOS LTD. Asbestos Siding
Warehouses
Detroit Grand Rapids Cleveland Toledo

PLASTI-GLAZE



Plasti-Glaze the Post War Glazing Compound to specify. Made from bodied oils and special pigments. Weatherometer tests prove that Plasti-Glaze when properly applied and maintained will last as long as the sash. Dries rubbery hard, not rock hard, easy to apply, easy to remove.

For long life, weather and air-tight glazing use America's Leading Glazing Compound Plasti-Glaze.

PLASTIC PRODUCTS CO. INC.

DETROIT • CHICAGO • JERSEY CITY

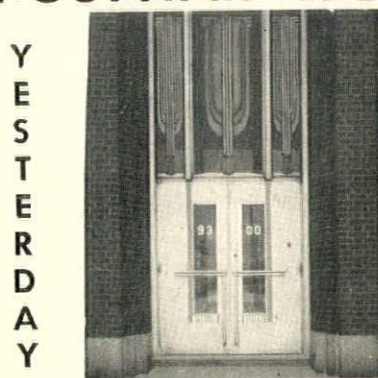
MOYNAHAN

BRONZE COMPANY

Always Forward

WITH DESIGNS, TECHNIQS
AND MANUFACTURING
FACILITIES TO ASSIST
YOU IN

POSTWAR WORK



9071 ALPINE AVENUE • DETROIT 4, U.S.A.

BLUE PRINTS

PHOTOCOPY PRINTS

OZALID DIRECT PRINTS

DRAFTING ROOM FURNITURE

DRAWING MATERIALS

DUNN BLUE PRINT CO.

“At Your Service—Any Time—Any Where”

5922 SECOND

TR. 1-7525

DETROIT, MICH.

341

WEEKLY BULLETIN



MICHIGAN SOCIETY OF ARCHITECTS

OFFICERS

ROGER ALLEN, President
ADRIAN N. LANGIUS, 1st V.-President
EARL W. PELLERIN, 2nd V.-President
JOSEPH W. LEINWEBER, 3rd V.-President
L. ROBERT BLAKESLEE, Secretary
MALCOLM R. STIRTON, Treasurer

TALMAGE C. HUGHES
Executive Secretary

DIRECTORS

ROBERT B. FRANTZ
WILLIAM E. KAPP
HARRY L. MEAD
GEORGE M. McCONKEY
JOHN C. THORNTON
EERO SAARINEN
DONALD A. KIMBALL

Published Weekly. Subscription Price 50c per year. (Non-members \$1.00) 10 cents per copy.

EDITOR—TALMAGE C. HUGHES

120 Madison Avenue, Detroit 26, Michigan

E. B. FAUQUIER—ADVERTISING MANAGER

Volume 20

DETROIT, MICHIGAN, JANUARY 15, 1946

Number 3

DETROIT'S SLUM PROBLEM

By F. GORDON PICKELL, A.I.A.

DETROIT AGAIN HAS A HOUSING PROBLEM, meaning that there is need for more housing and better housing to replace much of what we have. Our Mayor thinks that discussion can help. Does he think that something is needed to smokescreen our Federally subsidized speedways? He told Washington that we must have \$148,000,000, when all the informed agree that this spending of millions to get people who work in town out into the country is nonsense. If we spend one-third as much, MAKING THE CITY HABITABLE, it will be better for the people and the city. It may be granted that those who can get out will be better off, with more air and less taxes. The automobile without the speedways did the job for a while in the past. But in time this moving out of the city became a menace. Thousands of families were moving out yearly, earning their living in Detroit, spending their wages outside. This became one of the factors that created slums and blighted areas in Detroit.

Our Engineers with their political grease are now to have their way and the city is at their mercy, the problems of parking, parks and housing they leave for others to take care of. Plans are not lacking for these needs but unfortunately they are sterilized by our tax policy. "The real problem will be to obtain the slum areas at any price that will permit demolition of the existing structures and construction of new housing of the required low-cost units with a density per acre not exceeding what the surrounding local conditions will determine to be reasonable," said William Stanley Parker, Fellow of The American Institute of Architects, as Chairman of Mayor Curley's Committee, making an architectural survey of Boston.

If Detroit could solve the LAND COST PROBLEM, with the O.P.A. gone and forgotten, there still remains a great handicap to housing which the Mayor and his Council are responsible for. Since I helped write the 1919 City Building Code I have learned that certain desirable features have a tendency to raise costs to a point where few can pay for new housing and defeat the objectives of proper public regulation. They simply put a premium on what sub-standard and old housing we have and prolong their retention. I am sorry to say that my fellow architects seem

blind to the changes made possible by our new building materials and are stuck in the mud of timidity when this question arises. They know that our code tends to be a specification. It is over twice the size of the one we wrote in 1919, but there is nothing they can do about it, so it seems. Architects must live and earn their rent, etc., and code-writing is a thankless job. The Twentieth Century Fund has pointed out all these things but Detroit and its architects and builders would not know about that.

Dean Freund Honored

Clement J. Freund dean of the University of Detroit College of Engineering has been appointed to the Accrediting Committee of the Engineers' Council for Professional Development.

He will supervise the examination and inspection operations of technical institutes and engineering schools in Michigan, Ohio, Indiana and Kentucky. He previously assisted in the inspection of Franklin and Wentworth Institutes in Boston.

Dean Freund is also a member of the Administrative Council of the Society of the Promotion of Engineering Education and has been active in conducting meetings of the Committee on Academic Tenure, Professional Practice and Responsibility and the Committee on Aims and Ideals of Cooperative Engineering Education.

EDWARD G. ROSELLA, A.I.A., announces the opening of his office for general the practice of architecture at 17114 Bradford Ave., Detroit 5, Mich. He is a member of the Chapter's Program Committee.

J. Campbell Morrison

J. Campbell Morrison, pioneer Michigan architect, and long a member of the Michigan Society of Architects, died at his home in St. Clair Shores, Mich. on January 3. He was 87 years old.



Born in Scotland, his family moved to Buffalo, N. Y., in 1866, and to Montreal in 1869. He took college and polytechnic courses in Nichols and Wood Academies. In 1875 he was articulated to Alex Hepborne, architect, for three years, following which he formed a partnership with A. J. Somers at Kearney, Neb. He later went with W. W. Sanborn of Clinton, Iowa, and upon his death succeeded to his practice.

From 1889 to 1905 he practiced in Chicago, during which time he was a member of Illinois Chapter, A.I.A., and aided in forming the Chicago Architects' Business Association. He came to Detroit in 1916, and practiced here until his retirement some years ago. He had been most active in the Michigan Society of Architects.

Mr. Morrison was most loyal to his profession, contributing generously of his time toward betterment of its conditions. He was always ready and willing to help younger men, was loved by all who knew him. The profession has lost a good friend.

He leaves his wife, Mrs. Frances Morrison, and three daughters, Mrs. J. K. Welford, of Pelham, N. Y.; Mrs. Herbert Light, Minneapolis, and Mrs. Ray Roage, Jackson Heights, L. I., N. Y.

O. W. BURKE CO.

GENERAL CONTRACTOR

FISHER BUILDING

MAdison 0810

Detroit, Mich.

UNiversity 2-3413

DARIN and ARMSTRONG

Incorporated

GENERAL CONTRACTORS

2011 FENKELL AVENUE

DETROIT

Glanz & Killian Co.

Contractors

PLUMBING — HEATING — VENTILATING
FIRE PROTECTION SPRINKLER SYSTEMS
1761 West Forest Avenue Temple 1-7820**Marsh Wall Products, Inc.**

EXCLUSIVE MANUFACTURERS OF DECORATIVE

Marlite

DOVER, OHIO

Division Engineer, Wm. E. Ogden

6132 Cass Avenue

Detroit 2, Michigan

MAdison 6300

Punch & Judy Theatre

Kercheval at Fisher Road

Ni. 3898

WEDNESDAY-THURSDAY

JAN. 16-17

Franchot Tone—Susanna Foster

"THAT NIGHT WITH YOU"

FRIDAY-SATURDAY

JAN. 18-19

Gene Tierney—John Hodiak

"BELL FOR ADANO"

Murray W. Sales & Co.

Wholesale

Plumbing and Heating Supplies

Flint — DETROIT — Pontiac

801 W. Baltimore MA. 4200

HANLEY COMPANY

E. F. Zerga, Mgr.

FACE BRICK UNGLAZED FACING TILE

FLOOR BRICK CERAMIC GLAZED TILE

CERAMIC GLAZED BRICK FLOOR TILE

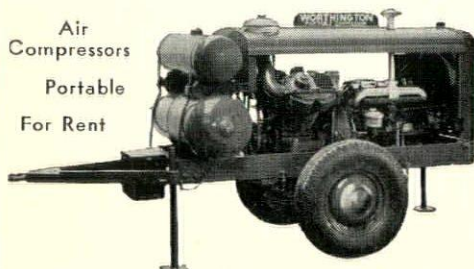
ACID BRICK

14545 Schaefer VE. 7-3200 Detroit 27, Mich.

Air
Compressors

Portable

For Rent

60 to 500 cu. ft.—By Day, Week or Month
All Accessories Furnished**W. H. ANDERSON CO., INC.**
Detroit, Michigan**CINDER
BLOCK
INC.**

Vermont 6-5500

9303 Hubbell Avenue
Bet. Chicago and Joy**H. H. Dickinson Co.**

COMPLETE BUILDERS SUPPLIES

Armored Concrete Curbing
Masters' Builders Products
HEATILATORS — ASPHALTS

5785 Hamilton Avenue

MAdison 4950

Koenig Coal & Supply Co.

Certified Concrete

CONCRETE — FUEL OIL — COAL

Main Office: 1486 Gratiot Ave. CADillac 1584

NELSON COMPANY

Plumbing, Heating and Air Conditioning

Supplies

Wholesale

Main Office and Display Room

2604 FOURTH AVE. PHONE RA. 4162

Branches
Royal Oak — Grosse Pointe — Ann Arbor**The Esslinger-Misch Co.**

General Builders

159 East Columbia Street

RAndolph 7021

DETROIT, MICHIGAN

FREDERIC B. STEVENS, INC.FACE BRICK, ENAMELED BRICK, GLAZED
BRICK AND TILE, ROOFING AND
FLOOR TILE

Representatives for

ANTI-HYDRO—For Hardening and Waterproofing

Concrete

THIRD AND LARNED STREETS

RAndolph 5990

DETROIT, MICH.

Viking Sprinkler Co.

Fire Protection Engineers & Contractors

Automatic Sprinkler Systems

Also a Complete Line of Pre-Action Devices

1125 East Milwaukee Avenue

MAdison 4230

DETROIT

*Brick For Permanence**Tile for Beauty and Endurance***Belden-Stark Brick Co.**

14305 Livernois Detroit 4, Michigan

HOgarth 1331 - 1332 - 1333



Long Experience — Adequate Facilities

Clean Cut Business Procedure

BLUE PRINTING AND PHOTOSTAT
REPRODUCTIONS**O & O Blue Print & Supply Co.**

CADillac 0005-0011

77 Sibley

CADillac 4890

**F. H. Martin Construction
Company**

955 E. Jefferson Ave.

Detroit, Michigan

COUSE & WESTPHAL

General Builders

12740 Lyndon Avenue

HOgarth 3525

Detroit, Mich.

FOX THEATRE

Now Showing

Gene Tierney - Cornel Wilde - Jeanne Crain

... in ...

"LEAVE HER TO HEAVEN"

— CLASSIFIED —

BRAUN LUMBER CORP. — TO. 8-0320, Davison
and G.T.R.R.F. M. SIBLEY LUMBER COMPANY — 6460 Ker-
cheval Avenue, Filtroy 5100RESTRICK LUMBER COMPANY — 14400 Wyoming,
HOgarth 4830**TURNER-BROOKS, INC.**

Floor Covering Contractors

All Types Floor, Wall and Ceilings

ASPHALT TILE

LINOLEUM

RUBBER TILE

CORK TILE

CARPETS

RUGS

WINDOW SHADES VENETIAN BLINDS

ACOUSTICAL MATERIALS

WOOD MOSAIC PARKAY FLOORS

MARLITE TILE

9910-20 Dexter Blvd.
Detroit, Michigan

TO. 8-2470

• **CELOTEX - CELO - BLOCK**• **COLD STORAGE INSULATION**

PIPE and BOILER COVERING

GREAT NORTHERN ENGINEERING CO.

13107 Grand River Ave., Detroit 27

HO. 0400

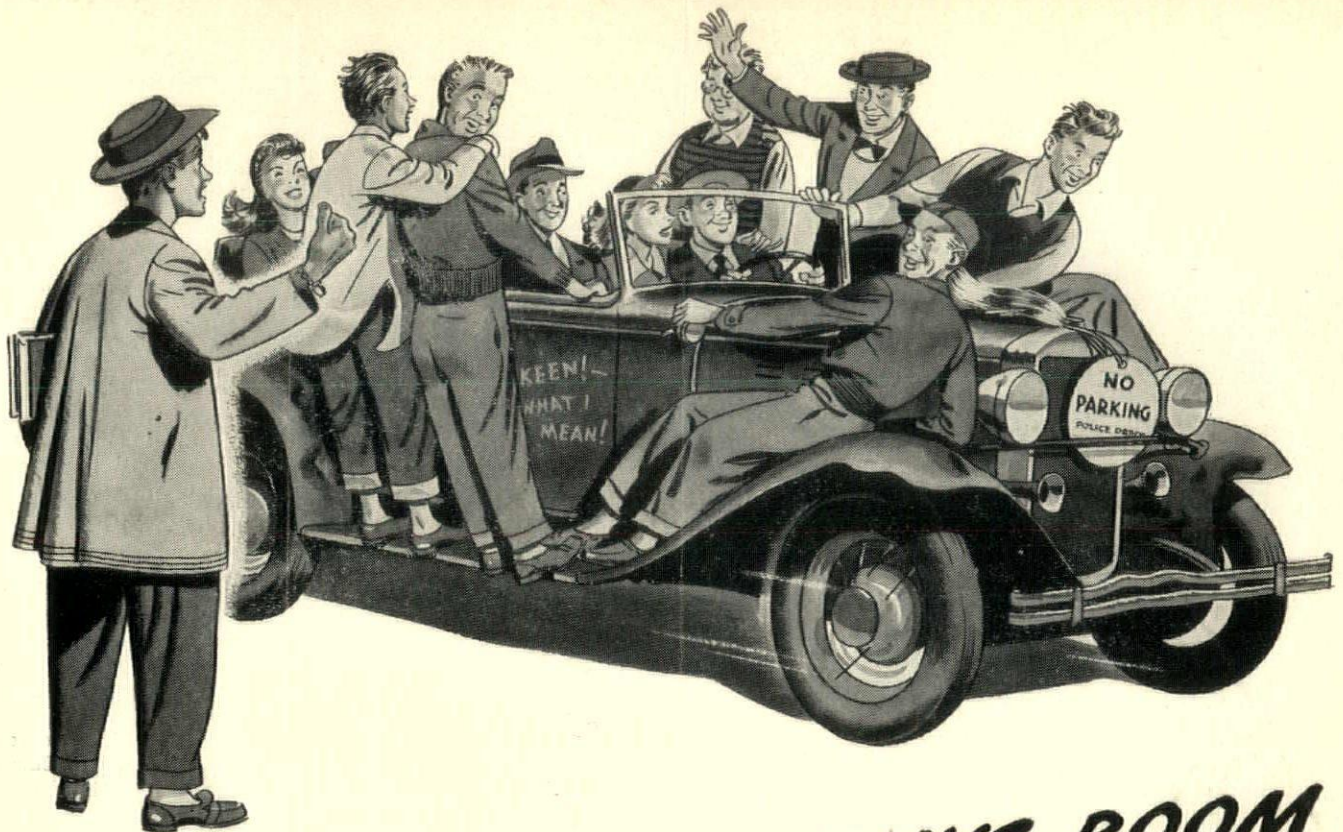
CELOTEX**ROCKWOOL INSULATION**

COMMERCIAL and DOMESTIC

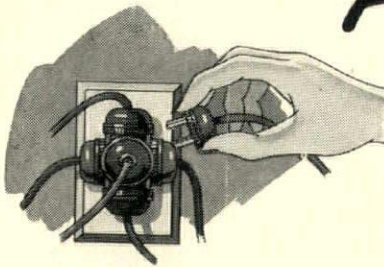
GREAT NORTHERN INSULATING CO.

13105 Grand River Ave., Detroit 27

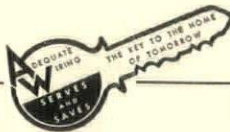
HO. 2166



THERE ISN'T ALWAYS ROOM FOR ONE MORE—



This is one of a series of advertisements prepared in cooperation with the Electrical Association of Detroit in the interest of insuring adequate wiring for every home in this area. Any house wired today should have enough properly spaced convenience outlets, enough circuits and large enough wire sizes for tomorrow's electrical living. It should accommodate the new frozen-food cabinets, electric ranges, automatic laundries, electric dishwashers and many other electrical appliances that will make living more pleasant and easier. When you build or remodel, be sure your home "measures up" in this important respect.



Ol' "Leaping Lena" ain't what she used to be. One more bobby-soxer and Lena would give up with a well-earned wheeze and a sigh. Likewise, homes wired for yesterday's electrical needs are inadequate for today's electrical living. Yet many home owners have become accustomed to inadequate wiring—to frequent blown fuses because of an overloaded circuit. Making sure that your home wiring is up to date is your assurance of being able to use the electrical appliances you want in your home when you want to use them—where you want to use them. It means having your home furnishings arranged to suit your taste, with outlets always convenient. And, of course, if your plans for tomorrow include a brand-new home, adequate wiring is an "A-1" item to check in plans and specifications.

THE DETROIT EDISON CO.

lets, cafeteria, kitchen first aid, and similar facilities, with stairways to the main assembly floor.

The assembly line runs the length of the North section of the plant. Incoming parts are received in the railroad track bay along the South side of the building and are processed as they move across the floor to the proper station on the line. Finished cars move on to a test off the Northwest section of the plant, with adjacent shipping and drive away facilities.

In the Southwest area of the plant is a service parts depot with car and truck loading facilities for the convenience of dealers in the area.

West of the main plant is the one-story office building 230 by 310 feet housing general and executive offices, cafeteria for visitors and office workers, display room combined with the lobby, and conference room for service instruction and similar functions.

A garage connects office and plant. This is 65 feet by 250 feet and houses company cars.

A separate power house, 100 feet by 120 feet, stands off the South side of the main plant. Three oil-fired boilers, each with a capacity of 60,000 pounds of steam per hour, provide steam for heating all buildings and for process work. Also in the boiler house are three rotary-type air compressors, each with a capacity of 1,600 cubic feet per minute.

Large fuel oil tanks surrounded by a protecting dyke are provided adjacent to the boiler house and convenient to the railway spur.

There is, in addition, an oil house containing storage facilities for various kinds of lubricants and paints, and mixing equipment.

Typifying the most modern type of industrial architecture, provision is made in the original plan for future expansion when desired, notably in the boiler house and on the East end of the main assembly plant.

The Patrick Warren Construction Company is the general contractor for this project.

Home Planners Hear Architect

Some 140 people attended the third meeting of the Home Planners Institute, Dec. 6, in Port Huron's Junior College High School Auditorium. F. C. O'Dell, A.I.A., of the College of Architecture and Design, University of Michigan, spoke on "The Selection of Materials."

"Contractor and Construction" will be the subject of a talk by George B. Brigham, Jr., A.I.A., also of the College of Architecture and Design, at the fourth meeting of the Institute, on Dec. 20, in the same auditorium.

Frank Conger Baldwin

1869-1945

*Distinguished Architect, Writer
and Civic Leader*

Frank Baldwin was one of that small but vigorous group of architects who laid the foundation for architectural organization in Michigan. Holding membership in the Western Association of Architects through the Michigan State Association they became members of The American Institute of Architects in 1891 when the Western Association was consolidated with the Institute; this unification took place shortly after Baldwin returned to Detroit from his studies at Boston Tech and entered the office of John Scott and Company where the late H.J.M. Grylls was, then the ever-helpful head draftsman. Affiliation with the Michigan Chapter soon followed and full membership in the Institute of which he became a Fellow in 1897.

Meanwhile, he had formed a most felicitous partnership with William B. Stratton, the firm of Stratton and Baldwin being the first in Michigan to be made up of men trained in American architectural schools. The varied practice of the firm, including many fine residences, was mark-

Among the buildings designed by Messrs. Stratton and Baldwin are the Baldwin residence, visited by the delegates to the Architectural League convention in 1908; the Pewabic Pottery of Mrs. Mary Chase Stratton; the Belle Isle Park Bath House; the Frederick Stearns Laboratories and the Riverside Warehouses, both of which brought an architectural note into their respective fields, and the residence of stone, now the executive center of Wayne University, a house that should be preserved as one of the very best of its time in Detroit.

ed by excellence and charm in design and by exemplary of professional standards. Small staffs prevailed at that time in Detroit, favoring close contact with all aspects of projects and with co-workers; a boon to architectural students, employed during vacations, was an informal mentorship the capturing of whose values was the aim of the Mentor Plan many years later. Although trained in design and a good pen draftsman, Baldwin soon became the administrator of the firm, systematizing to a degree unusual in Michigan fifty-years-ago records, written and photographic, of current construction and of drafting and other costs. With a view to improving specifications, he published the Specification Index in card form; the printed General Conditions,

the work of a Chapter committee of which he was a member, became the corner stone for the Standard Documents of the Institute of whose first committee in that field he was a member. In this pioneer contribution by the Michigan Chapter he was associated with James S. Rogers, R. E. Raseman and Henry J. Meier.

The record reveals that Messrs. Baldwin, Stratton and Burrows all became presidents of the Michigan (now Detroit) Chapter, as did Messrs. D.J.V. Snyder and Arthur K. Hyde who were associated with Stratton during different periods after the removal to Washington of Baldwin who had started the tradition of leadership. With many and varied interests, his chief passion while in Detroit seemed to be The Institute whose state chapter he long served as secretary, president and in other capacities. The distinguished architects who made sacrifices on behalf of The Institute, some of whom he met during the Detroit convention of 1896, and the ideals of the organization were an inspiration to him not only early in his career but were a continuing influence in his later life and explain his extraordinary devotion to The Institute. For him there could be but one senior national organization, one whose spirit and form had ripened through the years and which had demonstrated its right to represent the profession before the nation and the world. He sought with the approval of the Board to link the Architectural League of America, of which he was president 1908-1911 and which consisted largely of architectural clubs, as a junior organization to the Institute, a step which might have committed the senior organization to the broad educational program of the League for draftsmen.

His interest in civic affairs led to his election as mayor of suburban Grosse Pointe, secretary, of Detroit's first planning commission and president of the Detroit School of Design of which he was a founder.

In Washington he served three years as a vice-president of the Institute, was a member of the Jury of Fellows, and was national secretary 1926-1934. He represented the United States at three sessions of the International Congress of Architects, including those of Rome and Budapest.

The life of Frank Baldwin was a rich one filled with constructive effort and accomplishment in architectural, civic and cultural fields, and during a period when whole-hearted cooperation was much needed he gave generously of himself to upbuilding his profession and to strengthening The American Institute of Architects.

Emil Lorch

Day and Evening Courses in

Engineering and Chemistry
Spring Courses Start February 4

DETROIT INSTITUTE OF TECHNOLOGY

303 Downtown Y.M.C.A. Bldg., Detroit

WANTED

EXPERIENCED ARCHITECTURAL
DRAFTSMEN, GOOD WORKING
CONDITIONS, GOOD SALARIES. —

ALDEN B. DOW,

POST. ST., MIDLAND, MICH.

WANTED

EXPERIENCED

ARCHITECTURAL DRAFTSMEN

DERRICK AND GAMBER

Caillac 3175 - 515 Hammond Bldg.
Detroit 26, Michigan

Ford Motor Company

Albert Kahn Associated Architect & Engineers, Inc.

Latest announced addition to the huge production facilities of the Ford Motor Company is a new assembly plant at St. Louis, Missouri, which will add more than 850,000 square feet to the firm's existing facilities.

The Ford Motor Company's former service building on Forest Park Boulevard was sold some years ago. This project represents a renewed Ford activity in the St. Louis area and is designed to cut delivery time and increase the supply of cars and trucks anticipated in the expanded market in the territory to be serviced from the plant.

The new assembly layout, as conceived on the design boards of Albert Kahn Associated Architects and Engineers, Inc., comprises an assembly building, to which is joined a separate office building separate power house, related service structures, and test track.

The site fronts on U. S. Highway 66 and backs up to Cold Water Creek just beyond the St. Louis city limits in the vicinity of the municipal airport. Two tracks from the adjacent Wabash railway service the plant, in combination with trucking facilities.

All buildings are of structural steel, with steel sash and enclosing walls of brick and gunite. The center and higher portion of the office building containing the entrance lobby, fan room, etc., is faced with limestone.

An architectural feature is the large combination office and display room, monumental and modern in character, with high curved ceiling, stone piers, aluminum sash, and wall finish partly in limestone and the balance in plaster and acoustic material.

The assembly building is 520 feet by 1480 feet, with the production area one-story high. A monitorless roof of insulated cement tile supports eight fan rooms for summer and winter ventilation, as well as transformer and switch rooms.

Across the building midway of its length is a second story portion 120' by 450' exclusively for employee facilities. To the North of the building, and extending to the property line is a parking area with a capacity of 650 employee cars. Public bus transportation facilities are also provided in an arrangement which prevents cross-traffic. From the parking lot area, stairways and overpass, bridging the factory driveway, give access to the second story portion of the assembly plant.

Here are grouped lockers, showers, toi-

(Cont. on Page 4—Col. 1)

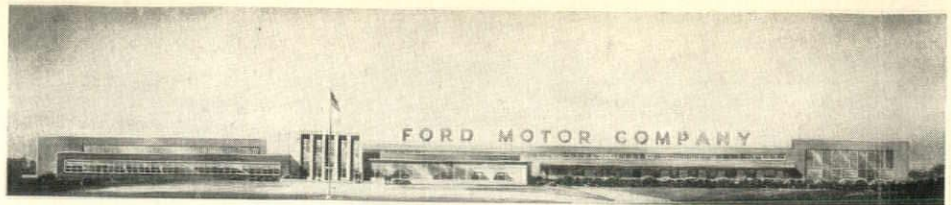
STANDARD COTTON INSULATION

- Moisture Proof
- Best at Lowest Cost
- Greater Heat Resistance
- Vermin Proof

Tests Prove Greater Efficiency of Cotton

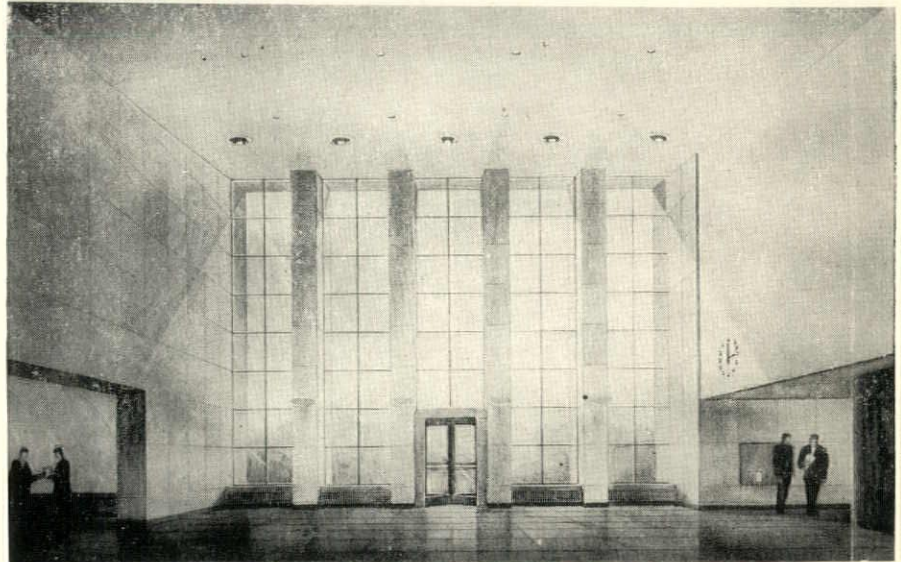
Warren Fibre Products Co.

14290 Meyers Road Detroit 27, Michigan
Telephone HOgarth 5675



Ford Motor Company's St. Louis, Mo., Plant

Below: View of office building lobby. Albert Kahn Associated Architects and Engineers, Inc.



Art Classes

Drawing, Painting, Clay Modeling, Water Color,
Fashion and Commercial Art

Saturday Morning Children's Classes

ART SCHOOL OF THE SOCIETY OF ARTS & CRAFTS

47 Watson Street, Detroit CADillac 4721

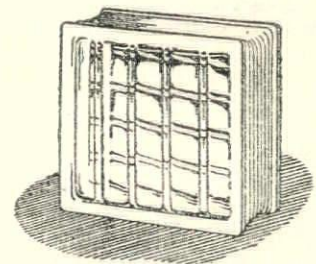
PLASTI-GLAZE



Plasti-Glaze the Post War Glazing Compound to specify. Made from bodied oils and special pigments. Weatherometer tests prove that Plasti-Glaze when properly applied and maintained will last as long as the sash. Dries rubbery hard, not rock hard, easy to apply, easy to remove.

For long life, weather and air-tight glazing use
America's Leading Glazing Compound Plasti-Glaze.

PLASTIC PRODUCTS CO. INC.
DETROIT • CHICAGO • JERSEY CITY



GLASS BLOCK FOR YOUR PLANT—NOW!

Critical materials are not required to erect glass block panels in that new plant addition—or in replacing wornout sash in existing buildings. Get Insulux Glass Block at pre-war prices—without delay.

CADILLAC GLASS CO.

LENOX 4940

2570 HART AVENUE

DETROIT

Sec. 562 P.L. & R.
U. S. POSTAGE

PAID

Detroit, Mich.
Permit No. 4123The Octagon,
1741 New York Ave.,
Washington, D.C..POSTMASTER: If forwarded, or undeliverable, FOR ANY
REASON, notify sender of new address, or reason, on
form 3547, postage for which is guaranteed.

BEAUTIFUL INTERIORS

are created with wall paper
furnished by

FISHER WALL PAPER CO.

We have a competent staff, willing to show
you the best in style and color, the leading
Wall Paper Manufacturers of the country offer.

Let Us Help You

5840 Woodward Avenue
& LOCAL BRANCHES IN DETROIT"Ask Your Decorator"
He will tell you that

Fisher Wall Paper Co.

are Michigan's largest wall paper distributors.

John H. Freeman
Finish Hardware

Architects Bldg.

Detroit 1

Phone

TEmp 1-6760

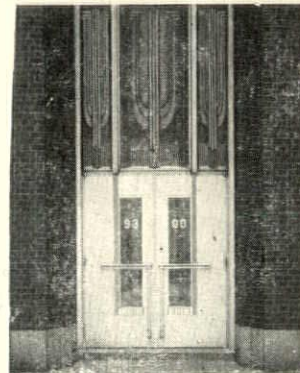
Members American Society Architectural
Hardware Consultants

MOYNAHAN

BRONZE COMPANY

*Always Forward*WITH DESIGNS, TECHNICS
AND MANUFACTURING
FACILITIES TO ASSIST
YOU IN

POSTWAR WORK

Y
E
S
T
E
R
D
A
YT
O
M
O
R
R
O
W

9071 ALPINE AVENUE • DETROIT 4, U.S.A.

BLUE PRINTS

PHOTOCOPY PRINTS

OZALID DIRECT PRINTS

DRAFTING ROOM FURNITURE

DRAWING MATERIALS

DUNN BLUE PRINT CO.

"At Your Service—Any Time—Any Where"

5922 SECOND

TR. 1-7525

DETROIT, MICH.

NEW LOWER GAS
RATES OFFER STILL
MORE SAVINGS!With the new lower gas rates
now in effect, you can enjoy
the convenience of gas at
the lowest price ever. In
fact, you can add still more
gas appliances, operating
for only a few pennies
more a month! At left is a
scene from a kitchen in one
of Detroit's best hotels.
Here, too, gas is used for
cooking . . . for Gas is best!

MICHIGAN CONSOLIDATED GAS COMPANY

415 Clifford

CHerry 3500

WEEKLY BULLETIN



MICHIGAN SOCIETY OF ARCHITECTS

OFFICERS

ROGER ALLEN, President
ADRIAN N. LANGIUS, 1st V.-President
EARL W. PELLERIN, 2nd V.-President
JOSEPH W. LEINWEBER, 3rd V.-President
L. ROBERT BLAKESLEE, Secretary
MALCOLM R. STIRTON, Treasurer

TALMAGE C. HUGHES
Executive Secretary

DIRECTORS

ROBERT B. FRANTZ
WILLIAM E. KAPP
HARRY L. MEAD
GEORGE M. McCONKEY
JOHN C. THORNTON
EERO SAARINEN
DONALD A. KIMBALL

Published Weekly. Subscription Price 50c per year. (Non-members \$1.00)

Application Pending at Detroit, Michigan for Second Class Matter

EDITOR—TALMAGE C. HUGHES

120 Madison Avenue, Detroit 26, Michigan

E. B. FAUQUIER—ADVERTISING MANAGER

Volume 20

DETROIT, MICHIGAN, JANUARY 22, 1946

Number 4

ARCHITECTS TO AID VETERANS' TRAINING

ARCHITECTS OF MICHIGAN will organize a combined program of veterans' training and architectural apprenticeship, it was announced by Roger Allen, Grand Rapids architect and president of the Michigan Society of Architects, following the Society's board meeting in Detroit on January 9. Clair W. Ditchy, president of the Detroit Chapter, The American Institute of Architects, reported that the plan was approved by that organization's board.

"Already architects in Lansing, Saginaw and Kalamazoo have entered into such a program," Allen stated, in explaining that the plan would be state wide. Contemplating taking advantage of benefits offered by the G. I. Bill of Rights through the Veterans' Administration, in which the Government allowance for training is \$65 for single men and \$90 for married men per month, the program will be supplemented by apprenticeship in architects' offices. This combined income will enable the veteran whose training in architecture was interrupted by the war to return and to gain some practical experience. Since there is a scarcity of architectural help the program will be of great value to the profession as well as the veteran, and enable offices to complete more planning for future construction.

It is hoped that the plan, when worked out, will permit veterans who have graduated, but have had no experience, to take refresher courses while taking advantage of apprenticeship in architects' offices. A bottleneck may develop in the schools, however, as they are being taxed already.

Of the 1,157 veterans registered at Wayne University, 878 are receiving grants in aid either from the government or private sources, school officials state. Approximately 825 have elected to enter university training under some section of the GI Bill of Rights. Of this number about

279 are paying their own expenses, the announcement says.

Don H. Palmer, university counselor in Veterans' affairs, said 708 enrollees have applied for assistance under Public Act 346, which now provides up to \$65 a month for single men and \$90 a month for married men. About 900 veterans are attending Wayne for the first time, Palmer said.

Allen, who is also a newspaper columnist, was the speaker at the Chapter's dinner in the Rackham building following the board meetings. He gave a humorous talk on house planning, quoting from his recent book, "Backfired at Random," which contains excerpts from his daily column, "Fired at Random," appearing in the Grand Rapids Press.

Ditchy announced that the Chapter's February 15 meeting would be for members only and he invited them to come prepared to present any matters which they considered of benefit to the profession. On March 15, he said, the Chapter will join with the Michigan Society of Architects in its 32nd Annual Convention scheduled at the Rackham building.

Allen appointed a committee to nominate officers and directors to serve on the Society's Board for 1946-47. They are Adrian N. Langius, chairman; Clarence Rosa and Kenneth C. Black. The Board of the Society elected another committee

to prepare a second slate, consisting of John C. Thornton, chairman; Malcolm R. Stirton and Clair W. Ditchy.

A special Unification Committee for the Society was announced as Adrian N. Langius, chairman; Joseph C. Goddeyne and Malcolm R. Stirton.

The Committee on Veterans' Training consists of William A. Stone, chairman; Clark Ackley and Robert B. Frantz.

GEORGE F. DIEHL, A.I.A. Representative to The Engineering Society of Detroit, announces that ESD proposes a refresher course to be conducted at the Rackham building for the purpose of preparing candidates for registration as architects or engineers. In order to make arrangements for space, teachers, etc., it is desirable to sound out the field to see if there would be enough interested to make such an undertaking worth while. This information is desired before the next meeting of the group, to be held on January 28. Will those interested please communicate with Mr. Diehl.

O

RUS RADFORD, has returned from the armed service, is enjoying a short vacation, after which he will probably return to his former position with The Detroit Edison Co.

GIBRALTAR ALL PURPOSE CONCRETE

"The all-purpose ready mixed dry concrete"—a scientifically prepared mixture of dehydrated sand and gravel with cement to obtain the maximum strength.

GIBRALTAR BRICK-SET MORTAR

The NEW Dry Ready Mixed Brick Mortar Contains Everything
"SPECIFY GIBRALTAR FLOORS"

GIBRALTAR

48 State Fair Avenue West
Telephone TOWNSEND 8-0045



FLOORS INC.

Detroit, Mich.
Telephone TOWNSEND 8-0044

O. W. BURKE CO.
GENERAL CONTRACTOR
FISHER BUILDING

MADison 0810 Detroit, Mich.
UNiversity 2-3413

DARIN and ARMSTRONG
Incorporated
GENERAL CONTRACTORS

2011 FENKELL AVENUE DETROIT

Glanz & Killian Co.
Contractors

PLUMBING — HEATING — VENTILATING
FIRE PROTECTION SPRINKLER SYSTEMS
1761 West Forest Avenue Temple 1-7820

Marsh Wall Products, Inc.

EXCLUSIVE MANUFACTURERS OF DECORATIVE

Marlite
DOVER, OHIO

Division Engineer, Wm. E. Ogden
6132 Cass Avenue Detroit 2, Michigan
MADison 6300

Punch & Judy Theatre

Kercheval at Fisher Road Ni. 3898

WEDNESDAY-THURSDAY JANUARY 23-24

Constance Moore — Leo Carrillo
"MEXICANA"

FRIDAY-SATURDAY JANUARY 25-26

Evenings Only
George Sanders — Donna Reed
"PICTURE OF DORIAN GRAY"

Murray W. Sales & Co.

Wholesale

Plumbing and Heating Supplies

Flint — DETROIT — Pontiac
801 W. Baltimore MA. 4200

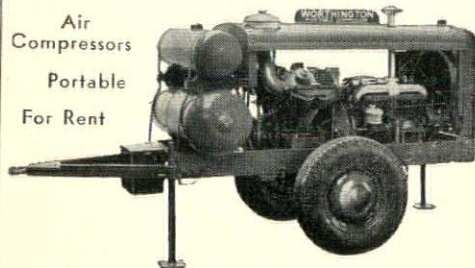
HANLEY COMPANY

E. F. Zerga, Mgr.

FACE BRICK UNGLAZED FACING TILE
FLOOR BRICK CERAMIC GLAZED TILE
CERAMIC GLAZED BRICK FLOOR TILE
ACID BRICK

14545 Schaefer VE. 7-3200 Detroit 27, Mich.

Air
Compressors
Portable
For Rent



60 to 500 cu. ft.—By Day, Week or Month
All Accessories Furnished

W. H. ANDERSON CO., INC.
Detroit, Michigan

CINDER BLOCK INC.
Vermont 6-5500

9303 Hubbell Avenue
Bet. Chicago and Joy

H. H. Dickinson Co.

COMPLETE BUILDERS SUPPLIES

Armored Concrete Curbing
Masters' Builders' Products
HEATILATORS — ASPHALTS

5785 Hamilton Avenue MADison 4950

Koenig Coal & Supply Co.

Certified Concrete

CONCRETE — FUEL OIL — COAL

Main Office: 1486 Gratiot Ave. CADillac 1584

NELSON COMPANY

Plumbing, Heating and Air Conditioning
Supplies

Wholesale

Main Office and Display Room
2604 FOURTH AVE. PHONE RA. 4162

Branches
Royal Oak — Grosse Pointe — Ann Arbor

The Esslinger-Misch Co.

General Builders

159 East Columbia Street RANDolph 7021
DETROIT, MICHIGAN

FREDERIC B. STEVENS, INC.

FACE BRICK, ENAMELED BRICK, GLAZED
BRICK AND TILE, ROOFING AND
FLOOR TILE

Representatives for
ANTI-HYDRO—For Hardening and Waterproofing
Concrete

THIRD AND LARNED STREETS
RANDolph 5990 DETROIT, MICH.

Viking Sprinkler Co.

Fire Protection Engineers & Contractors
Automatic Sprinkler Systems

Also a Complete Line of Pre-Action Devices
1125 East Milwaukee Avenue

MADison 4230 DETROIT

Brick For Permanence

Tile for Beauty and Endurance

Belden-Stark Brick Co.

14305 Livernois Detroit 4, Michigan

HOgarth 1331 - 1332 - 1333

Good Hardware for Over 60 Years

T. B. RAYL'S

Wholesale Builders Hardware Dept.

228 Congress St. W. Retail Store, 1149 Griswold

Patronize Our Advertisers!

Long Experience — Adequate Facilities

Clean Cut Business Procedure

BLUE PRINTING AND PHOTOSTAT
REPRODUCTIONS

O & O Blue Print & Supply Co.

CADillac 0005-0011

77 Sibley

CADillac 4890

**F. H. Martin Construction
Company**

955 E. Jefferson Ave.

Detroit, Michigan

COUSE & WESTPHAL

General Builders

12740 Lyndon Avenue

Detroit, Mich.

HOgarth 3525

FOX THEATRE

Now Showing
"FRONTIER GAL"

Starring Yvonne DeCarlo

Plus

Chester Morris in "BOSTON BLACKIE"

— CLASSIFIED —

BRAUN LUMBER CORP. — TO. 8-0320, Davison
and G.T.R.R.

F. M. SIBLEY LUMBER COMPANY — 6460 Ker-
cheval Avenue, Filtroy 5100

RESTRICK LUMBER COMPANY — 14400 Wyoming,
HOgarth 4830

TURNER-BROOKS, INC.

Floor Covering Contractors

All Types Floor, Wall and Ceilings

ASPHALT TILE

LINOLEUM

RUBBER TILE

CORK TILE

CARPETS

RUGS

WINDOW SHADES

VENETIAN BLINDS

ACOUSTICAL MATERIALS

WOOD MOSAIC PARKAY FLOORS

MARLITE TILE

9910-20 Dexter Blvd.
Detroit, Michigan

TO. 8-2470

• CELOTEX - CELO - BLOCK

• COLD STORAGE INSULATION

PIPE and BOILER COVERING

GREAT NORTHERN ENGINEERING CO.

13107 Grand River Ave., Detroit 27

HO. 0400

CELOTEX

ROCK WOOL INSULATION

COMMERCIAL and DOMESTIC

GREAT NORTHERN INSULATING CO.

13105 Grand River Ave., Detroit 27

HO. 2166

College of Architecture Has Vets' Refresher Course

WELLS I. BENNETT, Dean of the College of Architecture and Design at the University of Michigan announces that over the past year the College has had many inquiries from men in the armed services relative to a possible refresher course. These men are graduates of architectural schools and some of them have had considerable experience. They feel rusty, however, and express a desire for review work to bring them up to date before going into active professional work.

To meet this situation the College is planning to offer a refresher course for the spring term of 1946.

UNIVERSITY OF MICHIGAN COLLEGE OF ARCHITECTURE AND DESIGN

Refresher Program In Architecture

For the Spring Term of 1946

February 27 — June 19

The course is divided into two periods. The first, given to review, is to prepare for the nine weeks full-time co-ordinated project.

Six Weeks Review Period: Mar. 4-Apr. 13
Mechanics and Construction—MTWTF—

8:00—Professors McConkey and Marshall

Materials—MWF—11:00—Professor Brigham

Building Costs—TTh—11:00 — Professor McConkey

Design—MTWTF 1-5, S 8-12—Professors Hebrard and O'Dell

Nine Weeks Project Period: April 15-June 14

Criticism on Design—Afternoons—Professors Hebrard and Hammett

Criticism on Construction — Mornings — Professors McConkey and Marshall

This program is planned for veterans who are graduates of architectural schools. It may be taken under the provisions of the so-called G.I. Bill of Rights. As to standards and requirements, the work is the equivalent of twelve hours of college credit, but it is not to be applied for credit on the undergraduate or graduate degree programs of this College.

Architects' Civic Design Group Of Metropolitan Detroit

Dear Fellow Member:

A communication dated November 14, 1945, and addressed to members of the Architects' Civic Design Group stated that a small group has been preparing models of some of the study areas at Cranbrook on Saturdays.

As one of those engaged in this work and deriving some knowledge and gaining pleasure from it, I want to share the privilege with others who have not enjoyed it.

I know of no experience in our professional field, within recent years, which has been equally fascinating and compelling. The value of Mr. Saarinen's criticisms and suggestions is recognized and appreciated. Also the privilege of working at Cranbrook is one for which I am grateful.

Some of the members believe that they can work to better advantage at home. Such may be the case, but I am convinced that by so doing, one cannot receive as much good from the work, or progress as rapidly. There is not the same opportunity to work back and forth from the complete "bubble" map. Equally lacking is the possibility of studying the relation of one area to the adjoining areas, either in the plan or on the models.

Added to all this is the good fellowship, and the friendly, cooperative spirit which is fostered by working together. And most important is the privilege of knowing and understanding better our kindly patron, Mr. Saarinen, under whose tutelage the value of good planning is becoming clearer.

Progress has been made, but the group studies should move faster towards com-

pletion. The "bubble" may should be revised and set in place. Additional models should be made, so that we will have more to show at the proposed "special" meeting to which others besides our members will be invited.

Again we emphasize the value of this work, both to ourselves, and to others who will appraise it. And once more we mention the unusual opportunity which some members are missing. Come along to the next meeting and judge for yourself.

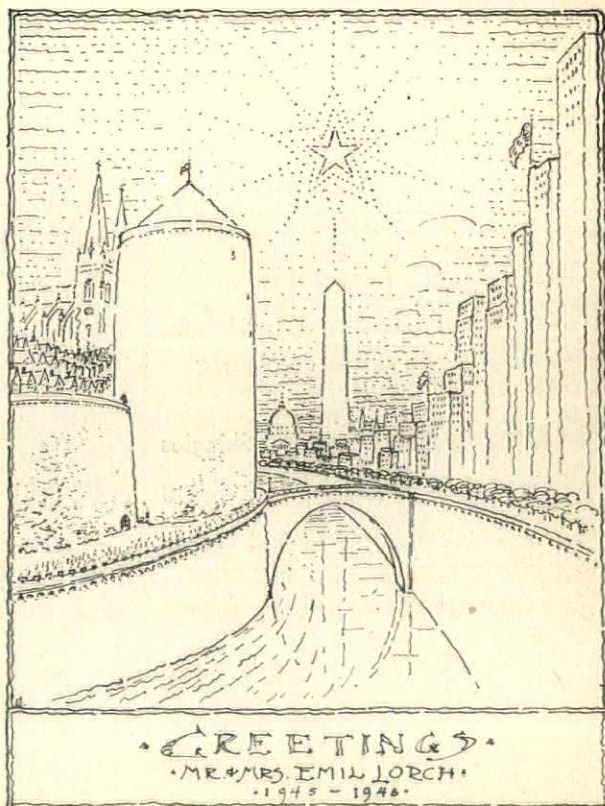
Branson V. Gamber,
Chairman, A.C.D. Group

NATIONALLY-KNOWN manufacturer of building material is seeking a man to train as representative in the new construction field in the Detroit area. The company makes careful selection of its representatives and once they are engaged it goes to considerable expense to train them in its factory and in the field. Applicant should be between 30 and 40 years of age, with an established residence and family. The company definitely requires previous selling experience but not necessarily in its field.

Requirements are for one with some knowledge of the construction industry, preferably with experience in contacting architectural and engineering offices in the Detroit area. The position is a desirable one, the basis of compensation being a salary, expenses and bonus. The company now has some established business in this field and is known to the larger architectural firms, general contractors and others through the sale of its materials over a period of years.

For further information communicate with the Weekly Bulletin.

Reproduced here is the Christmas card of Mr. and Mrs. Emil Lorch, of Ann Arbor. Contrasting Europe with its old walled cities, crowded houses, the castle of the duke or ruler and the church, with the land of lands, the star over the Washington Monument and the domed Capitol, with buildings soaring high as the sky.



What Does 1946 Hold For The Building Industry?

1. Will We Get Materials?
2. Will Price Control Bottlenecks Be Broken?
3. Will We Have Project Planning?
4. Will Red Tape Be Lengthened Or Shortened?

Do you want to hear the answers to these questions and many other similar pressing problems? You do? Then come and hear

RAYMOND M. FOLEY

Commissioner of the Federal Housing Administration

Thursday Eve., Jan. 31, 7:00 P.M. — Ballroom, Statler Hotel

This is a Testimonial Banquet to Mr. Foley under the joint sponsorship of the Construction Industry Council and the Detroit Board of Commerce

All Tables Are Reserved

Tickets and reservations will be available on or after January 21. Checks must accompany all reservation requests. For reservations call the Detroit Board of Commerce — CHerry 3700

BANQUET TICKETS \$5.00

(Make checks payable to the Detroit Board of Commerce)

Mr. Harold A. Bean,
14200 Woodmount,
Detroit, Mich. 27



Bonderizing is already famous for assuring positive adhesion for paint finishes on all types of sheet metal building equipment . . . Provides effective protection for steel sash, electrical, air conditioning and heating units.

PARKER RUST PROOF COMPANY

DETROIT, MICHIGAN

WANTED

EXPERIENCED

ARCHITECTURAL DRAFTSMEN
DERRICK AND GAMBER

Cadillac 3175 - 515 Hammond Bldg.
Detroit 26, Michigan

Day and Evening Courses
in

Engineering and Chemistry
Spring Courses Start February 4

**DETROIT INSTITUTE OF
TECHNOLOGY**

303 Downtown Y.M.C.A. Bldg., Detroit

WANTED

EXPERIENCED ARCHITECTURAL
DRAFTSMEN, GOOD WORKING
CONDITIONS, GOOD SALARIES. —

ALDEN B. DOW,
POST. ST., MIDLAND, MICH.

HARRY L. WHITE, A.I.A., member of the Detroit Chapter, was in Detroit for a few days lately, after finishing an assignment for the FPMA, in which work he has been engaged for the past several years. It had been his intention to again settle in Detroit, but he was called back in that agency's program of providing housing for returning veterans.

HUGH KEYES, A.I.A., announces the new location of his architectural office, at 309 Wabek Building, Birmingham, Michigan. Telephone Birmingham 2341.

STANDARD COTTON INSULATION

- Moisture Proof
- Best at Lowest Cost
- Greater Heat Resistance
- Vermin Proof

Tests Prove Greater Efficiency of Cotton

Warren Fibre Products Co.

14290 Meyers Road Detroit 27, Michigan
Telephone HOgarth 5675

The Toledo Plate & Window Glass Co.

*Glass Jobbers & Glazing
Contractors*

Distributors of
WEAVER-WALL Asphalt Shingles
and
ASBESTOS LTD. Asbestos Siding
Warehouses
Detroit Grand Rapids Cleveland Toledo

PLASTI-GLAZE



Plasti-Glaze the Post War Glazing Compound to specify. Made from bodied oils and special pigments. Weatherometer tests prove that Plasti-Glaze when properly applied and maintained will last as long as the sash. Dries rubbery hard, not rock hard, easy to apply, easy to remove.

For long life, weather and air-tight glazing use
America's Leading Glazing Compound Plasti-Glaze.

PLASTIC PRODUCTS CO. INC.

DETROIT • CHICAGO • JERSEY CITY

MOYNAHAN

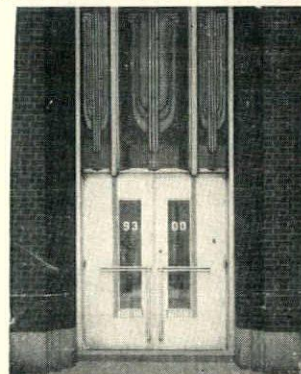
BRONZE COMPANY

Always Forward

WITH DESIGNS, TECHNICS
AND MANUFACTURING
FACILITIES TO ASSIST
YOU IN

POSTWAR WORK

Y
E
S
T
E
R
D
A
Y



T
O
M
O
R
R
O
W

9071 ALPINE AVENUE • DETROIT 4, U.S.A.

BLUE PRINTS

PHOTOCOPY PRINTS

OZALID DIRECT PRINTS

DRAFTING ROOM FURNITURE

DRAWING MATERIALS

DUNN BLUE PRINT CO.

"At Your Service—Any Time—Any Where"

5922 SECOND

TR. 1-7525

DETROIT, MICH.

The Octagon,
1741 New York Ave.,
Washington, D.C.



WEEKLY BULLETIN

MICHIGAN SOCIETY OF ARCHITECTS

OFFICERS

ROGER ALLEN, President
ADRIAN N. LANGIUS, 1st V. Pres.
EARL W. PELLERIN, 2nd V. Pres.
JOSEPH W. LEINWEBER, 3rd V. Pres.
L. ROBERT BLAKESLEE, Secretary
MALCOLM R. STIRTON, Treasurer
TALMAGE C. HUGHES, Exec. Sec.

EDITOR

TALMAGE C. HUGHES
120 Madison Avenue, Detroit 26
CHerry 7660

DIRECTORS

ROBERT B. FRANTZ
WILLIAM E. KAPP
DONALD A. KIMBALL
GEORGE M. McCONKEY
HARRY L. MEAD
EERO SAARINEN
JOHN C. THORNTON

Published weekly. Subscription Price 50c per year. (Non-members \$1.00). Application Pending at Detroit, Michigan for Second Class Matter

Volume 20

DETROIT, MICHIGAN, JANUARY 29, 1946

No. 5

HUMOR IN HOUSE BUILDING

*Excerpts from a talk at a meeting of the Detroit Chapter,
The American Institute of Architects, January 9, 1946*

By ROGER ALLEN, A.I.A.,

President of the Michigan Society of Architects

AS MOST OF YOU KNOW, I practice architecture in the daytime and column writing at night. I am a sort of a literary "resurrection man," spending the dark watches of the night in excavating dead witticisms, moribund anecdotes and verse of a cadaverous aspect, and bringing back, to limited extent, the aspect of life to these defunct gravity-removers. Also, I compose original remarks of my own. That is, I compose remarks and then try to find out if they are original.

Recently a collection of material from my daily column was published in book form and in the foreword I tried to answer a frequently asked question. (This is not a disguised commercial; the entire edition of this book is exhausted and so am I.)

One of the recompenses of column writing is the fact that now and then you print something that touches, if not the great heart of suffering humanity, at least the funny bone thereof. This happened to me lately. I began printing a series of articles entitled "SHORT COURSE IN HOUSE BUILDING" and this series, which is still continuing and for anything I can see to the contrary, can run forever, stirred up more letters, 'phone calls, and comment than anything I ever had in the column, with one exception. The exception was the time, when in a verse I quoted the line, "And what is so rare as a day in June?" and attributed it to Alfred, Lord Tennyson. Apparently I am the only man on the North American continent capable of temporarily forgetting that this line is from "The Vision of Sir Launfal" by James Russell Lowell. After all, Lowell does not rhyme with "venison," and Tennyson does. You can't have everything.

To conduct this quick course in house construction, we invited a high-priced architect (me) to analyze the various parts of the structure of the typical American dwelling. This is the first installment. Do

not read this if alone in the house late at night.

Mr. Allen's "Short Course" took up the various steps in house building, covering many details. The following is his discourse on Roofs:

Roofs are of two types, flat and pitched. Owners of new roofs are of one type, flat, as roofs are very expensive.

If there is a hole in your roof there will be a leak, but not where the hole is. This phenomenon is known as Quoony's law of physics, and has made millions of dollars for roofing contractors. If roofs leaked where the break in the roofing is located, anybody could fix them, but owing to their curious habit of leaking in a locality eight or nine feet away from the hole, the services of an expert are required. He will then crawl around the roof and fix the original task. Naturally, there will be five or six new leaks where he crawled around the roof, but one can't have everything, one can't. Two can't, either.

The preceding remarks, supposedly very comical, have a firm understratum of truth. There are a great many things wrong with house building. Perhaps the principal thing wrong is that there isn't enough of it. As the Kansas City Star puts it, "The slogan for the OPA in 1946 will be 'Two families in every garage.'"

All over this fair land civic committees are wrestling with the problem of sti-

mulating house building. Few of these committees are headed by architects, which is just as well. In my own home town the committee chairman is a returned chaplain. I like him very much, but nobody can make me believe that a returned chaplain has the vocabulary to deal with housing nowadays. The architects are consulted at crucial moments when somebody has to do some drawing for nothing.

When I see all these amateurs tackling the problem of housing I seem inevitably to be reminded of Mrs. Mulrooney, mother of 12, walking home from mass with Mrs. Gilhooley, mother of 9. "Twas a fine sermon his reverence gave us on the joys of having a large family," said Mrs. Mulrooney. "It was," agreed Mrs. Gilhooley, "and I wish I knew as little about it as his reverence."

After thinking the matter over in my quiet way, I have come to the conclusion that the way to end the housing shortage is to build more houses. It is figuring out hard stuff like this that has made me what I am today, and what is that, you may well ask. I have thought for some time that if we, as architects, really know as much about housing as we think we do, we ought to build some houses. If every architect in Michigan would build a house, suitable for a returned service man, and sell it to some former GI, we would be accomplishing some desirable results; we

(See ALLEN, Page 3)

O. W. BURKE CO.

GENERAL CONTRACTOR

FISHER BUILDING

Madison 0810

Detroit, Mich.

UNiversity 2-3413

DARIN and ARMSTRONG

Incorporated

GENERAL CONTRACTORS

2041 FENKELL AVENUE

DETROIT

Glanz & Killian Co.

Contractors

PLUMBING — HEATING — VENTILATING
FIRE PROTECTION SPRINKLER SYSTEMS

1761 West Forest Avenue

Temple 1-7820

Marsh Wall Products, Inc.

EXCLUSIVE MANUFACTURERS OF DECORATIVE

Marlite
DOVER, OHIO

Division Engineer, Wm. E. Ogden

6132 Cass Avenue

Detroit 2, Michigan
MADison 6300**Punch & Judy Theatre**

Kercheval at Fisher Road

Ni. 3898

WEDNESDAY-THURSDAY JANUARY 30-31

Tom Neal — Margaret Lindsay

"CLUB HAVANA"

FRIDAY-SATURDAY FEBRUARY 1-2

Dorothy Lamour — Arturo DeCordova

"A MEDAL FOR BENNY"

Murray W. Sales & Co.

Wholesale

Plumbing and Heating Supplies

Flint — DETROIT — Pontiac

801 W. Baltimore MA. 4200

HANLEY COMPANY

E. F. Zerga, Mgr.

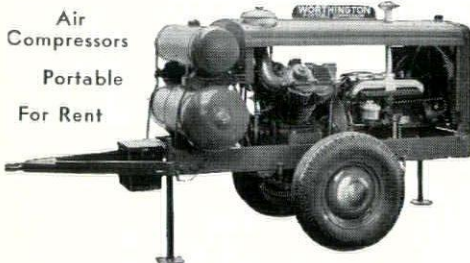
FACE BRICK UNGLAZED FACING TILE

FLOOR BRICK CERAMIC GLAZED TILE

CERAMIC GLAZED BRICK FLOOR TILE

ACID BRICK

14545 Schaefer VE. 7-3200 Detroit 27, Mich.

Air
Compressors
Portable
For Rent60 to 500 cu. ft.—By Day, Week or Month
All Accessories Furnished**W. H. ANDERSON CO., INC.**
Detroit, Michigan**CINDER BLOCK INC.**

Vermont 6-5500

9303 Hubbell Avenue
Bet. Chicago and Joy**H. H. Dickinson Co.**

COMPLETE BUILDERS SUPPLIES

Armored Concrete Curbing
Masters' Builders Products
HEATILATORS — ASPHALTS

5785 Hamilton Avenue

MADison 4950

Koenig Coal & Supply Co.

Certified Concrete

CONCRETE — FUEL OIL — COAL

Main Office: 1486 Gratiot Ave. CADillac 1584

NELSON COMPANYPlumbing, Heating and Air Conditioning
Supplies

Wholesale

Main Office and Display Room
2604 FOURTH AVE. PHONE RA. 4162Branches
Royal Oak — Grosse Pointe — Ann Arbor**The Esslinger-Misch Co.**

General Builders

159 East Columbia Street

RAndolph 7021

DETROIT, MICHIGAN

FREDERIC B. STEVENS, INC.FACE BRICK, ENAMELED BRICK, GLAZED
BRICK AND TILE, ROOFING AND
FLOOR TILERepresentatives for
ANTI-HYDRO—For Hardening and Waterproofing
ConcreteTHIRD AND LARNED STREETS
RAndolph 5990 DETROIT, MICH.**Viking Sprinkler Co.**Fire Protection Engineers & Contractors
Automatic Sprinkler Systems

Also a Complete Line of Pre-Action Devices

1125 East Milwaukee Avenue
MADison 4230 DETROIT*Brick For Permanence**Tile for Beauty and Endurance***Belden-Stark Brick Co.**

14305 Livernois Detroit 4, Michigan

HOgarth 1331-1332-1333

Good Hardware for Over 60 Years

T. B. RAYL'S

Wholesale Builders Hardware Dept.

228 Congress St. W.

Retail Store, 1149 Griswold

Patronize Our Advertisers!

Long Experience — Adequate Facilities

Clean Cut Business Procedure

BLUE PRINTING AND PHOTOSTAT
REPRODUCTIONS**O & O Blue Print & Supply Co.**

CADillac 0005-0011

77 Sibley

CADillac 4890

F. H. Martin Construction Company

955 E. Jefferson Ave.

Detroit, Michigan

COUSE & WESTPHAL

General Builders

12740 Lyndon Avenue

HOgarth 3525

Detroit, Mich.

FOX THEATRE

Now Showing

"KISS AND TELL"

Starring Shirley Temple

— CLASSIFIED —

BRAUN LUMBER CORP. — TO. 8-0320, Davison
and G.T.R.R.F. M. SIBLEY LUMBER COMPANY — 6460 Ker-
cheval Avenue, Fltzroy 5100RESTRICK LUMBER COMPANY — 14400 Wyoming,
HOgarth 4830**TURNER-BROOKS, INC.**

Floor Covering Contractors

All Types Floor, Wall and Ceilings

ASPHALT TILE

LINOLEUM

RUBBER TILE

CORK TILE

CARPETS

RUGS

WINDOW SHADES

VENETIAN BLINDS

ACOUSTICAL MATERIALS

WOOD MOSAIC PARKAY FLOORS

MARLITE TILE

9910-20 Dexter Blvd.

Detroit, Michigan

TO. 8-2470

• CELOTEX - CELO - BLOCK

• COLD STORAGE INSULATION

PIPE and BOILER COVERING

GREAT NORTHERN ENGINEERING CO.

13107 Grand River Ave., Detroit 27

HO. 0400

CELOTEX**ROCKWOOL INSULATION**

COMMERCIAL and DOMESTIC

GREAT NORTHERN INSULATING CO.

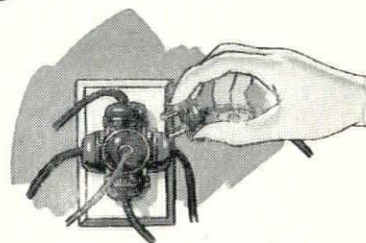
13105 Grand River Ave., Detroit 27

HO. 2166



THERE ISN'T ALWAYS ROOM FOR ONE MORE—

PADAUNG SAL has reached the height of her social career—if those neck ringlets mean anything. And likewise, a good many of today's homes have reached the height of their electrical careers if there isn't room for one more electrical appliance without overloading the circuits and blowing fuses. To help you enjoy tomorrow's electrical living, have your home checked for adequate wiring. Your home may be an old one, but it can hold all the electrical conveniences of a new one—with adequate wiring. And if you are planning on building or buying a new home, it's doubly important to see to it that your home is adequately wired for the good things electricity can give you.

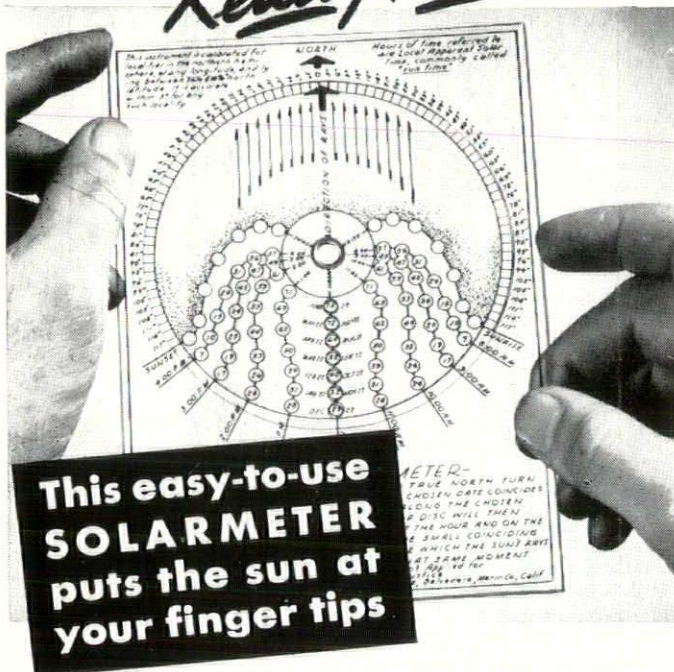


This is one of a series of advertisements prepared in cooperation with the Electrical Association of Detroit in the interest of insuring adequate wiring for every home in this area. Any house wired today should have enough circuits and large enough wire sizes for tomorrow's electrical living. It should accommodate the new frozen-food cabinets, electric ranges, automatic laundries, electric dishwashers and many other electrical appliances that will make living more pleasant and easier. When you build or remodel, be sure your home "measures up" in this important respect.



THE DETROIT EDISON CO.

*Here's something
Really New!*



Have you ever wished for a scientifically designed, easy-to-use instrument which would enable you to plan accurately for maximum effective orientation to sunlight?

The SOLARMETER literally puts the sun at your finger tips!

By using the SOLARMETER you can know the precise direction and inclination of the sun's rays at the hours and days you select. And it doesn't matter where in the U.S.A. you are planning your structure. There is a SOLARMETER calibrated for your band of latitude. Thus, during preliminary planning, you can dispose elements, locate and orient the building, check canopies, roof overhangs, windows, garden arrangement, etc., to take full advantage of sunlight throughout the year.

The SOLARMETER is as easy to use as a T-square. Simply lay the translucent instrument on top of any plan at any scale. Set the dial on the hour and date in question and the pointing arrow will indicate the direction in which the sun's rays are travelling at that moment, together with their inclination to the horizontal plane. It can be used on the board or in the field.

The SOLARMETER is precision-made of durable Vinylite, with machine-set indices calibrated to your particular brand of latitude. It's an instrument no architect, designer or draftsman should be without. Your client will be impressed with your progressiveness and attention to detail. Hundreds are already in use. Endorsed by leading architects.

The supply of sheet plastics is still limited. Order your SOLARMETER today!

Please send me a GRAPHIC SOLARMETER calibrated to my particular locality: ☐ Enclosed is my check for \$3.00 (Purchase price to be promptly refunded if I am not satisfied.) ☐ Send me a SOLARMETER for one week trial without obligation.

NAME _____

ADDRESS _____

R. W. JUSTICE, Box 122-A, BELVEDERE, MARIN COUNTY, CALIF.

Day and Evening Courses
in
Engineering and Chemistry
Spring Courses Start February 4
**DETROIT INSTITUTE OF
TECHNOLOGY**
303 Downtown Y.M.C.A. Bldg., Detroit

Art Classes
Drawing, Painting, Clay Modeling, Water Color,
Fashion and Commercial Art
Saturday Morning Children's Classes
**ART SCHOOL OF THE
SOCIETY OF ARTS & CRAFTS**
47 Watson Street, Detroit CADillac 4721

WANTED
**EXPERIENCED ARCHITECTURAL
DRAFTSMEN, GOOD WORKING
CONDITIONS, GOOD SALARIES. —**
ALDEN B. DOW,
POST. ST., MIDLAND, MICH.

WANTED
EXPERIENCED
ARCHITECTURAL DRAFTSMEN
DERRICK AND GAMBER
CADillac 3175 - 515 Hammond Bldg.
Detroit 26, Michigan

**The Toledo
Plate & Window Glass Co.**
**Glass Jobbers & Glazing
Contractors**
Distributors of
WEAVER-WALL Asphalt Shingles
and
ASBESTOS LTD. Asbestos Siding
Warehouses
Detroit Grand Rapids Cleveland Toledo

BEAUTIFUL INTERIORS
are created with wall paper
furnished by
FISHER WALL PAPER CO.
We have a competent staff, willing to show
you the best in style and color, the leading
Wall Paper Manufacturers of the country offer.
Let Us Help You
5840 Woodward Avenue
6 LOCAL BRANCHES IN DETROIT
"Ask Your Decorator"
He will tell you that
Fisher Wall Paper Co.
are Michigan's largest wall paper distributors.

**STANDARD COTTON
INSULATION**
• Moisture Proof
• Best at Lowest Cost
• Greater Heat Resistance
• Vermin Proof
Tests Prove Greater Efficiency of Cotton
Warren Fibre Products Co.
14290 Meyers Road Detroit 27, Michigan
Telephone HOgarth 5675

Producers' Committees

The Producers' Council of Michigan announces the appointment of committees for 1946 as follows, the first named being chairman:

Entertainment: M. Goldenburg, R. L. Deppman, W. A. Cory.

Program: Paul R. Marshall, C. J. Bradley, W. R. Sherman.

Membership: W. E. Ogden, E. J. Anderson, W. F. Mulcahey.

Attendance: A. A. Shirley, H. C. Black, William Portland.

Publicity: Walter Torbet, E. C. Baker, C. A. Smith.

Advisory: R. B. Richardson, Wayne Mohr, W. T. Harms.

Liaison with Architects: Floyd Clise, A. H. Knowlton, William Partland.

Construction Industry: Louis T. Ollesheimer.

Joseph F. Busse, president; Dayton Proudy, vice-president; Howard Miller, treasurer, and M. J. Maley, secretary.

Home Show at Hudson's

You have undoubtedly seen the news articles about the postwar exhibit the Plexiglas Dream Suite—in Life, Newsweek, Business Week, Modern Plastics, and the architectural magazines.

This interesting plastic creation is being shown from January 21st to February 2nd on the tenth floor of the J. L. Hudson Company store. It is an outstanding feature of their greatest annual Housewares Exposition. Architects, will find particular interest in this exhibit.

We believe you will find the edge-lighted, three dimensional mural, the "radiant walls" and the "turret shower" particularly provocative.

ARCHITECT registered Michigan and Pennsylvania, Member A.I.A., now employed as designer and delineator by nationally known organization, desires connection with smaller firm or individual offering possibilities for future partnership. Inquire of the Weekly Bulletin.

Allen—(Continued from Page 1)

would be doing something, even if it were only a drop in the bucket, to relieve the shortage, and we would also give a visual demonstration that a house designed by a skilled technician looks better and functions better than the doleful dwellings produced by the average realtor. Who knows, in time people might grow to like architects?

I.E.S. Meeting

There is being planned a meeting of the Michigan Section of the Illuminating Engineering Society which it is believed will interest the architects.

Mr. T. P. Brown, District Engineer of the Lamp Department of the General Electric Company, will speak on "Lighting Progress" at 7:30 p.m., February 12, 1946, in the Sales Auditorium of The Detroit Edison Company, at 2000 Third Avenue.

Dinner will be served at 5:45 p.m. in the Edison Cafeteria in their General Offices, at 2000 Second Avenue, for which reservations will be required, and the charges will be one dollar.

Notices will be mailed to architects with dinner reservation cards.

Mr. Brown will discuss the important developments in light sources during the past year, and will not only have considerable demonstration equipment, but will also have a display of many newly designed pieces of lighting equipment which will be of interest to the architects. —D. E. Trefry, Detroit Edison Co.

EDWIN B. MORRIS, A.I.A., is the author of an article in the December issue of Atlantic Monthly, entitled "2 Bedrooms, 6 Baths," in which he states: "A new type of bathroom has recently been evolved. It invites three persons, regardless of sex, or previous condition of acquaintance, to enter the same wash-up and make-up area at the same time. Such a bathroom to accommodate three, costs but little more than two bathrooms—showing thus a clear gain.—We are carefully progressing toward the cliff-dweller theme of simplified housekeeping. Sequestered seclusion is no longer feasible. We must recapture the original frankness of which the race was once master.—The progressive bathroomer goes along knocking at doors. He finds a vacant spot, which happens to be a toothbrushing routine. Finished that, he proceeds with his knocking and finds another spot. A lady emerges from the hardest location and he, carrying it off with smile and merry quip, gracefully enters.—We inevitably have before us, therefore, the knotty problem of redesigning people who are to occupy houses.—We must be aware that our immediate prospect is not to build modern houses, but to build people suited to occupy modern houses."

O

BILL HARMS, our good friend we know so well in the Producers' Council, has recently returned from foreign service, and is again with the Detroit office of Master Builders Co.

Dow Speaks at MSC

Alden B. Dow, well-known Midland architect, spoke at the third lecture meeting of the Fine Arts Series at Michigan State college, East Lansing. His topic was "Man and Modern Architecture" and the program included showing of a color film presenting some of his work in private housing as well as larger projects such as Lake Jackson, Tex.

Following an informal forum discussion, the audience viewed an exhibit on "Post-war Housing" which is circulated by the Museum of Modern Art, New York City, and which includes examples of buildings designed by Dow.

Chapter Open Forum

Clair W. Ditchy, FAIA, president of the Detroit Chapter, AIA, announces that the next dinner meeting of the Chapter, on Feb. 15, will be an open forum. This is in accordance with the Chapter's policy to hold at least one meeting a year at which members may "speak their minds." The meeting will be for members only, and your president requests that members give thought to matters they would like to have discussed, and come prepared to take the floor. No program, other than open discussion, will be prepared.

A change in time of the Chapter Board meeting, which regularly precedes the dinner meeting, has been made necessary. Heretofore the Board has met at 4:00 p. m. On this occasion it will meet at 2:30 p. m. because of a Michigan Society of Architects' Board meeting at 4:30. The later hour is more suitable to out-of-town directors.

The Society Board will discuss plans for its 32nd Annual Convention at the Rackham Building, on March 15. As in the past few years, this will be a one-day and evening affair, with possibly some entertainment the preceding evening. A speaker of note will be engaged.

The dinner meeting on Feb. 15 will be at 6:30 p. m. in the Rackham Building. Keep this date open for a rousing meeting, at which the members will put on the show.

CONWAY PIERCE announces the opening of his office in the Transportation Building for the practice of mechanical and electrical engineering. He was formerly of the Detroit office of Allied Engineers, Inc. Operating in the field of power, heating and industrial engineering, he is prepared to do work on a fee basis or percentage rate. The telephone number is RAndolph 2872.

BLUE PRINTS PHOTOCOPY PRINTS OZALID DIRECT PRINTS DRAFTING ROOM FURNITURE DRAWING MATERIALS

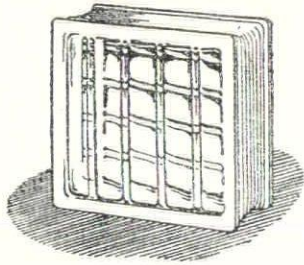
DUNN BLUE PRINT CO.

"At Your Service—Any Time—Any Where"

TR. 1-7525

5922 SECOND

DETROIT, MICH.



GLASS BLOCK FOR YOUR PLANT—NOW!

Critical materials are not required to erect glass block panels in that new plant addition—or in replacing wornout sash in existing buildings. Get Insulux Glass Block at pre-war prices—without delay.

CADILLAC GLASS CO.

LENOX 4940 2570 HART AVENUE
DETROIT

PHOTOGRAPHS

Architectural Progress Copies

JOHN S. COBURN

517 Charlevoix Bldg., Detroit, CHerry 2836

PLASTI-GLAZE



Plasti-Glaze the Post War Glazing Compound to specify. Made from bodied oils and special pigments. Weatherometer tests prove that Plasti-Glaze when properly applied and maintained will last as long as the sash. Dries rubbery hard, not rock hard, easy to apply, easy to remove.

For long life, weather and air-tight glazing use America's Leading Glazing Compound Plasti-Glaze.

PLASTIC PRODUCTS CO. INC.
DETROIT • CHICAGO • JERSEY CITY

MOYNAHAN

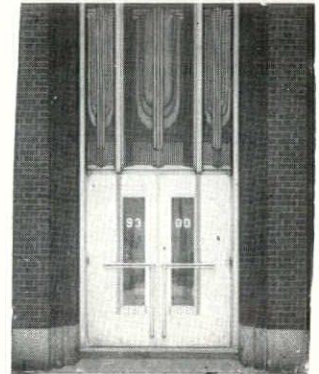
BRONZE COMPANY

Always Forward

WITH DESIGNS, TECHNICS
AND MANUFACTURING
FACILITIES TO ASSIST
YOU IN

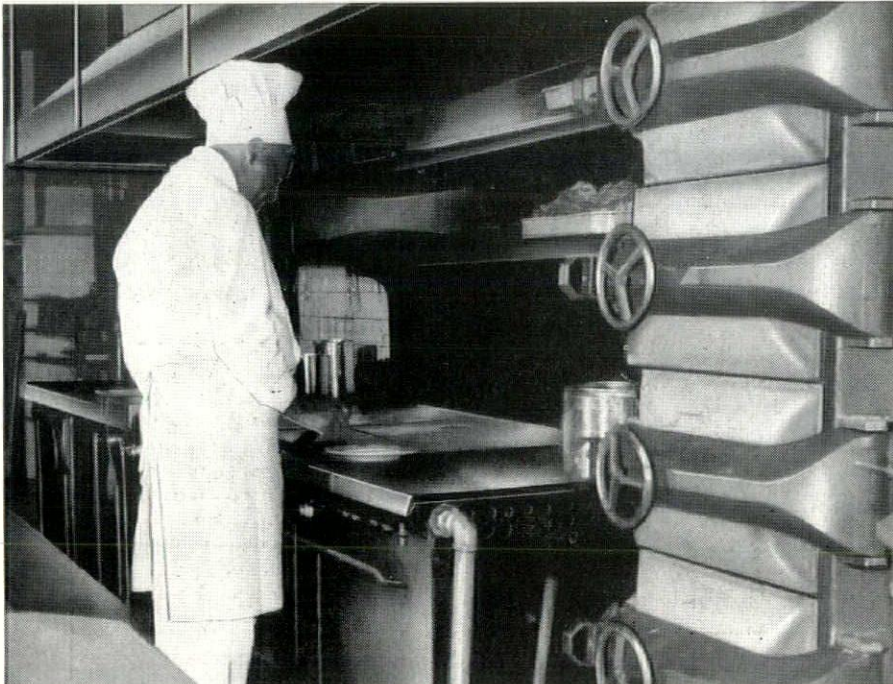
POSTWAR WORK

Y
E
S
T
E
R
D
A
Y



T
O
M
O
R
R
O
W

9071 ALPINE AVENUE • DETROIT 4, U. S. A.



**Always Efficient
Always F-A-S-T
and Economical**

Gas is best

Wherever speedy, precision cooking is desired, you'll find that gas is the most satisfactory fuel. For heavy-duty cooking, gas is always dependable. And with the new, lowered rates, gas costs less than ever. Pictured left is one of the kitchens in a large Detroit hotel where gas is used for cooking, for *Gas is Best!*

MICHIGAN CONSOLIDATED GAS COMPANY

415 Clifford

CHerry 3500