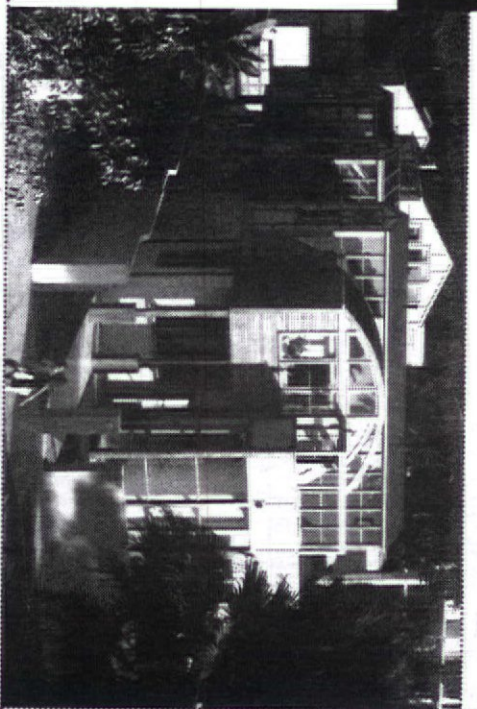


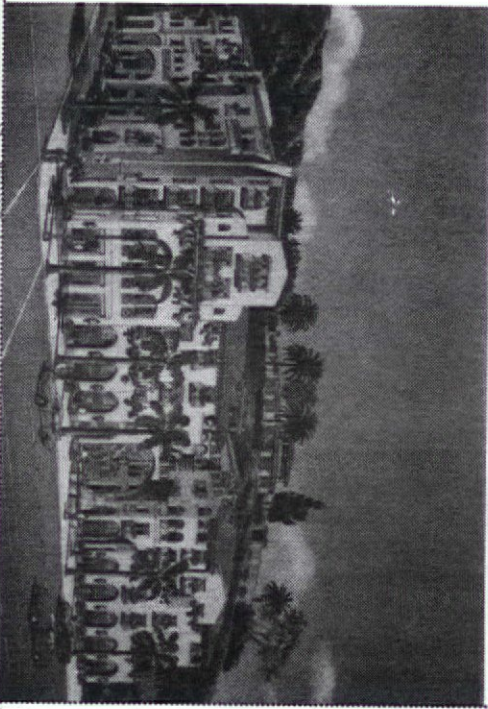
melinda gray architect

Melinda Gray, an Adjunct Professor at Woodbury University, established her practice in 1986. Since that time, she has received numerous citations for her single- and multi-family projects such as the **Giulam Residence**, right. Here, framing serves both decorative and structural functions.



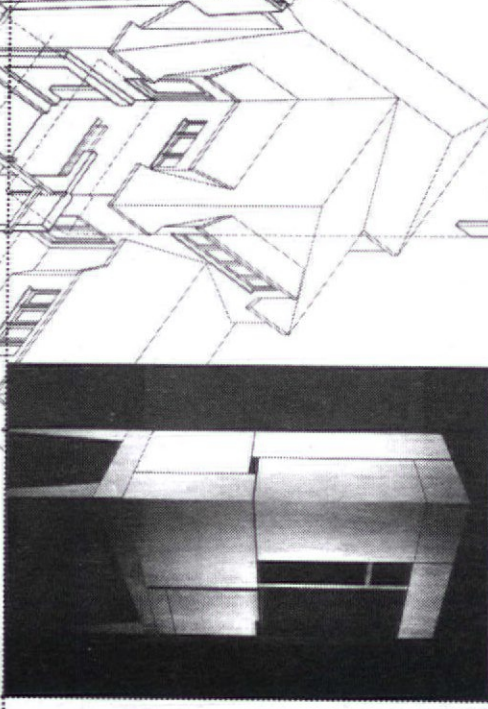
design aid architects

Lambert Geissinger, AIA and Jeffrey B. Samudio, APA formed the Architecture, Planning and Preservation partnership in 1989. Projects include the Levuka Heritage Master Plan, Fiji as well as projects in Canada, Mexico and locally such as the **Colorado Terrace** (shown), a mixed-use project in Eagle Rock with 70 units of senior housing, retail and offices.



j.m. reynolds architects

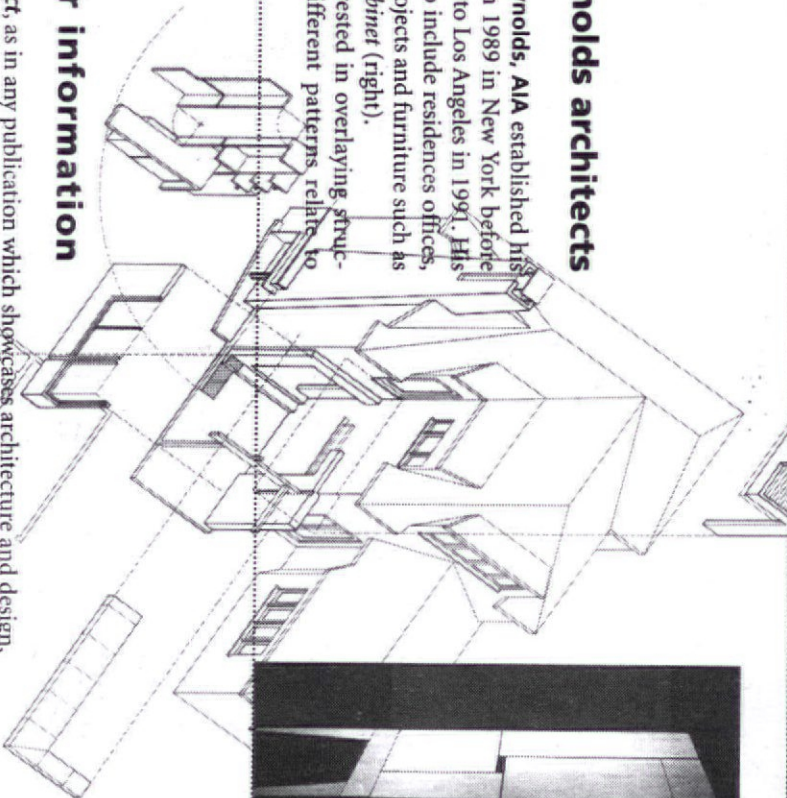
Jay M. Reynolds, AIA established his practice in 1989 in New York before relocating to Los Angeles in 1991. His firm's portfolio include residences, offices, commercial projects and furniture such as the **Vertical Cabinet** (right). "I'm interested in overlaying structures—how different patterns relate to each other."



for your information

In *L.A. Architect*, as in any publication which showcases architecture and design, our editors and readers welcome a wider range of submissions as well as greater diversity from a larger pool of talent and projects... **that means you!**

To that end, please also check out **Submission Requested** on page 6 and the *L.A.A.* **Call for Submissions** on page 7, and get to work on your portfolios. Editors hate waiting and won't always seek you out. —*RDM*



Anderson Residence Axonometric
J.M. Reynolds Architects

Bulk Rate
U.S. Postage Paid
Pacific Rim Mailers

L.A. Architect

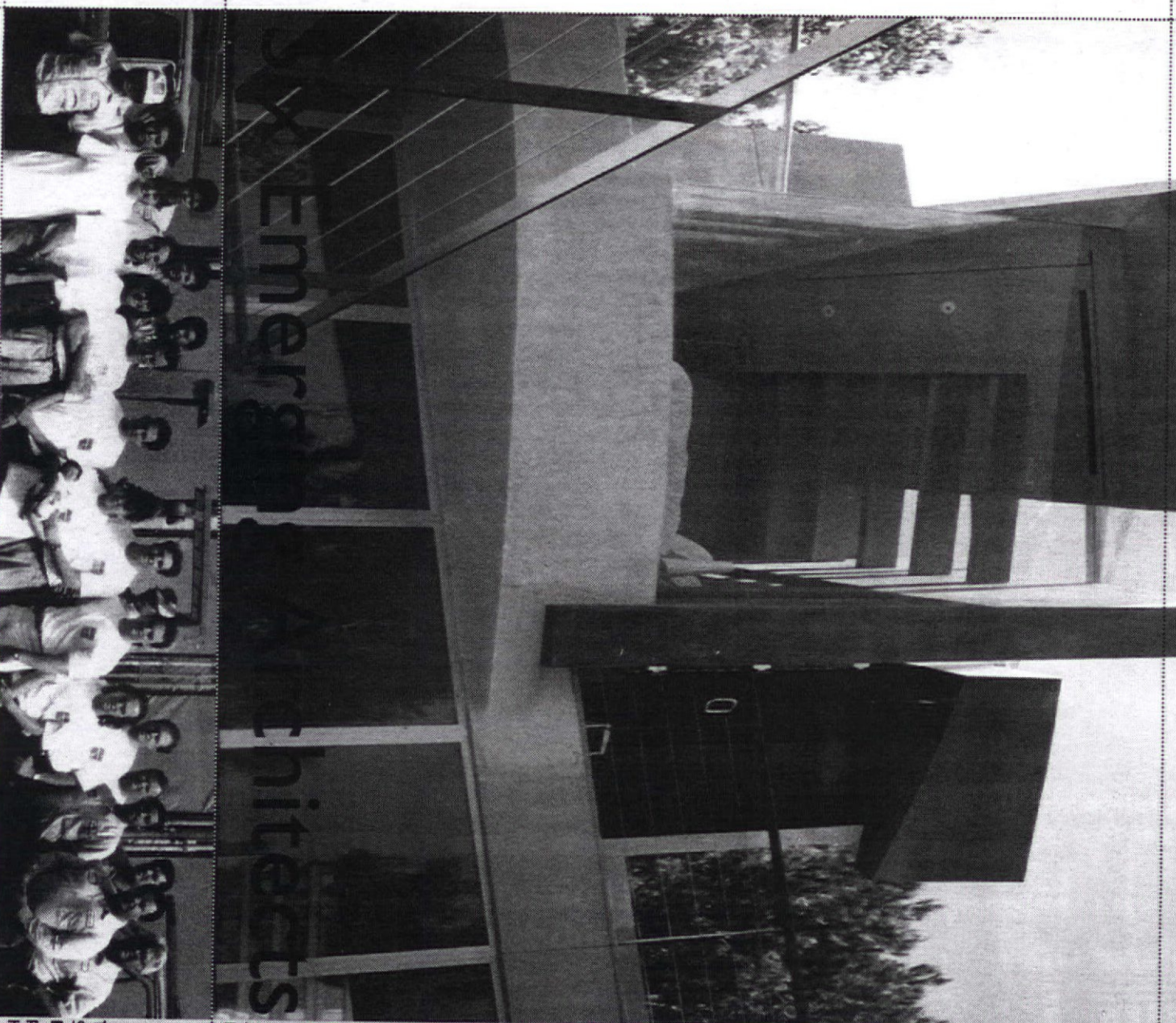
Published by the
Los Angeles Chapter,
American Institute
of Architects:
Pacific Design Center
8687 Melrose Avenue
Suite M3
Los Angeles, CA 90069
AIA.LOSANG@aol.com
\$4.00

syndesis, inc.

"We are innovators whose work crosses established boundaries to stake out new imaginative territories with an orientation towards the future and a clear sense of public benefit.

We are concerned with achieving sustainability through ecologically sensitive design that is accessible to a diverse range of people through appropriate technology, communication, and beauty."

See pages 3 - 5 for
Emerging Architects.



Top: Bay Renovation by
Syndesis Studio.
Bottom: Syndesis staff
photo. (Architect, David
Hertz is in the center.)

Tanaka Joins Board of Education Committee



AI/A President, Ted T. Tanaka, FAIA has been invited to sit on the Los Angeles Board of Education's *Blue Ribbon Citizen's Oversight Committee*. This Committee was set up to ensure that the bond funds from the recently passed

Proposition BB are spent for the intended purposes and in the most efficient and cost-effective manner possible.

Proposition BB authorized the LAUSD to issue bonds for up to \$2.4 billion to finance repairs and renovations to the district's aging school facilities. Tanaka will be one of eleven individuals with demonstrated expertise in finance, building design and construction, large scale project oversight and community leadership. His term will last one year.

New Plans for L.A. Architect

A few months ago the AIA/LA issued an RFP to selected publishers to explore the possibility of "out sourcing" the publishing and advertising sales aspects of *L.A. Architect*. The Chapter is currently in negotiation with several strong candidates. The style and editorial content of *LAA* will remain under the complete control of AIA/LA and the Editorial Board of *LAA*. The first issue of the "new" *L.A. Architect* will be published this fall.

Partnership with a strong outside publisher will provide several attractive advantages over the current policy of self-publishing, among which would be an expanded format, color, wider distribution and financial consistency.

We look forward to greater participation from the Chapter and the entire A&D community as *L.A. Architect* takes a new form.

—Michael Hricak, FAIA
Co-Chair, *L.A. Architect*

Note: The Editorial Board is presently considering new members to be a part of this exciting change. Candidates should submit a letter of interest and resume to the Chapter office attention: Michael Hricak, FAIA, Co-Chair, *L.A. Architect*.

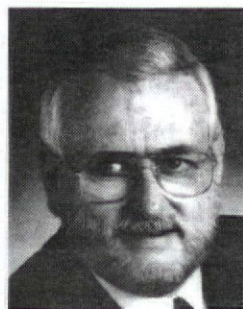
L.A. Architect Call for Submissions

L.A. Architect is currently accepting submissions for consideration in our upcoming issue: *Entertainment Architecture '97: Hollywood and the Motion Picture Industry*. This issue will investigate the *City as a Set*, and the *Set as a City*, and look into the burgeoning post-production industry. We will also try to understand Hollywood's infatuation with the architect as a character type. This issue will include a series of interviews with three of Hollywood's decision makers regarding their opinions on whether architecture influences Hollywood or vice versa.

Submissions are due at the end of August. For guidelines and information, contact Rochelle Dynes Mills, editor, at *LAA*: (310) 785-1813, or directly at: (213) 294-5825.

Note: In anticipation of our new format, *LAA* will be updating its editorial/submission guidelines, editorial calendar, advertising rates and media kits. We encourage your submissions and suggestions in future issues including upcoming *Residential Architecture*, and *Architecture and Technology*. For updated information when it becomes available, contact *LAA* at the number listed above.

Chester Widom Elected to Charter Commission



Chester (Chet) Widom, FAIA, has been elected Charter Commissioner for the Sixth District of Los Angeles which includes Cheviot Hills, Rancho Park, parts of West Los Angeles, Venice, Marina and Playa Del Rey and Westchester.

Widom, who defeated Jimmie Woods-Gray garnering more than half of total votes, will now serve as one of a 15-person commission—one person from each Councilmatic District—elected for the sole purpose of drafting a new city charter for presentation and approval by the voters within two years.

Widom was former national President of the AIA, and currently serves on the special AIA Advisory Team on Kobe, Japan.

AIA/LA Design Committee

The AIA/LA Design Committee continues its highly acclaimed *Good Business/Good Design* series **Thursday, August 21, 1997** at the West Los Angeles office of **Widom Wein Cohen**. The evening will feature a presentation by WWC partner **Andrea Cohen Gehring, AIA**.



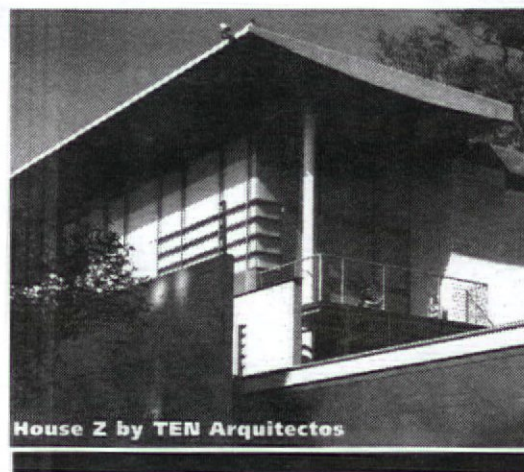
GB/GD offers guests a glimpse into the studios and practices of local architects and earns four (4) **AIA CEU's**. Past office visits have included **RoTo Architects**, **R. L. Binder Architecture & Planning** and **Moore Ruble Yudell**. Space is limited. For reservations contact Howard Barnett, Co-Chair, at (310) 371-2505.

AIA/LA Associates

The AIA/LA Associates will host their **16th Annual Sandcastles Competition September 7** at **Zuma Beach** in Malibu (near Trancas Tower) from **10:00 am – 5:00 pm**. The event, which raises funds for scholarships, is being held in conjunction with **A Day At The Beach**—a triathlon and beach festival by Michael Epstein Productions, Inc.

Sandcastles is open to all. Registration is \$16 per adult, \$10 per child. For information contact Shaun Jennings at (310) 306-9102 x4406 or sjennings@cunningham.com. (Also see the insert in this issue for information on both **Sandcastles** and **A Day At The Beach**.)

Last year's winning teams were: **The Jerde Partnership** in first place; **Cunningham Group** in second and **RTKL** in third.



House Z by TEN Arquitectos

Masters of Architecture

The **Masters of Architecture 1997 Fall Series** will begin with a lecture by internationally renowned architect, **Enrique Norten**, of **TEN Arquitectos** (Cuernavaca, Mexico). Enrique Norten began his professional practice in 1981 in Mexico City as partner of Albin y Norten Arquitectos. In 1986 he founded the firm Taller de Enrique Norten Arquitectos (TEN Arquitectos) with partner Bernardo Gómez-Pimienta.

TEN has received several international awards including the Architecture Prize of the National Fund for the Arts in 1990; the Latin American Grand Award at the Buenos Aires Biennial and Record Houses Award in 1993, and Progressive Architecture Awards in 1994 and 1995.

Mr. Norten received his first professional degree at the Universidad Iberoamericana in Mexico City, and his Masters of Architecture from Cornell University. He is founding member and Member of the Editorial Board of *ARQUITECTURA* magazine.

Coming to the **Masters of Architecture Fall Series** are **Craig Hodgetts** and **Hsin-Ming Fung** of Hodgetts + Fung Design Associates, **October 16**, and **Frank O. Gehry, FAIA** of Frank O. Gehry & Associates in dialog with a leading Japanese architect, **early November**.

All lectures take place at the L.A. County Museum of Art, Bing Theater, at 6:30 p.m.. Tickets are \$12 for public, \$10 AIA and LACMA members, \$5 for seniors and students w/valid ID. (USC students free.) For additional information on these and other AIA programs, contact the AIA/LA at (310) 785-1809.

The goals of the Masters of Architecture Series are to increase public awareness of the value of design excellence in architecture, to contribute meaningfully to cultural and educational programming in the city, and to provide a forum for discussion between international, national and local architect; between masters and students.

Speakers are selected based on their reputation for architectural excellence as exemplified by the honors and awards received, and worldwide recognition in journals and publications.

AIA/Los Angeles would like to thank the following companies and individuals for their generous support in sponsoring our 1997 Chapter programs:

Masters of Architecture Lecture Series
Artemide, Inc.
British Consulate-General
California Council of Architect's Education
Calvin R. Abe Associates
Form Zero Architectural Books + Gallery
Martin B. Gelber, FAIA
Japan America Society of Southern California
Los Angeles County Museum of Art
Pacific Printing on Third Street
Paul S. Veneklasen & Associates
Studio Francesca Garcia-Marques
University of Southern California (USC)
Virgin Atlantic Airways
Bernard Zimmerman, FAIA

1997 Officer & Board of Directors Installation
Continental Graphics
Dealey, Renton & Assoc.
Insurance Brokers
Design Professionals Insurance Company
DMJM
Dworsky Associates
Jacobus & Yang, Inc.
John A. Martin and Associates
RAMCO Insurance Services
Ted Tokio Tanaka Architects
William J. Yang & Associates

Chapter Events
A.N. Abell Auction Co.
Associates Purchasing
bulthaup
Driver-Eddy Construction Company
Ford Graphics
Hennessey + Ingalls Bookstore
Kimball International
Knoll
Marvin Rand, Hon. AIACC
Miele Appliances
Poggenpohl US, Inc.
Sub-Zero

WestWeek
Apple Computer
BQE Software
Shaw Contract
Sitag International
Universal Reprographics

MTA Exhibit and Reception
LaVigne Muffie Inc.
MAA Engineering Consultants, Inc.
Parsons Brinckerhoff
Sverdrup

ARE Study Seminar Program
William Amor, AIA
Ed Caruana, AIA
Mark DiCecco, AIA
Ihsan Faraj, P.E.
Ford Graphics
Russ Givens
Michael Hricak, FAIA
Lou Kaufman, AIA
Ernie Marjoram, AIA
Stephen Perlof, S.E.
Forrest Petersen

Home Tour
Bernie Altman, AIA
Sally Landworth, Hon. AIA/LA
Michael Lehrer, AIA

For Sponsorship Opportunities, contact:
Nicci Solomons
Executive Director
Tel: (310) 785-1809

For additional information regarding AIA/LA calendar events, call (310) 785-1809.

1997 AIA/LA Design Awards & NEXT LA Awards

Eligibility

Design Awards: Distinguished Building, Urban Design Awards

Projects by L.A. based architects, or projects constructed within AIA/LA Chapter boundaries by architects in L.A. or beyond. (Projects which have previously won Design Awards are ineligible.)

NEXT LA: On the Boards, Competition Submissions, Urban Planning Schemes, Unbuilt Projects, Student Work, Theoretical Projects

Projects by L.A. based architects, designers and students.

Entry Fees

\$175 for AIA/LA members; \$230, non-members; \$50 students. Multiple entries are welcome.

Save the Dates

September 3 Registration forms must be postmarked.
October 13 Submittal packages must be received by 3:00 p.m.
October 17 **Opening Reception** at Bergamot Station. (Award winners will not be announced.)
October 30 **Awards Dinner** at the Biltmore Hotel honoring recipients of the **AIA/LA Design Awards**, **NEXT LA Awards** as well as recipients of the **1997 Presidential Awards**. Each first entry will receive one ticket to this black-tie gala. Additional tickets are \$100 per person, AIA/LA members; \$125 per person, non-members.

For additional information, call (310) 785-1809. **NEXT LA** is co-sponsored by AIA/LA and the Design Council of MOCA.

Yoli's
treats from the pantry
custom cakes • breads • cookies • candies
gift baskets • corporate events • special occasions
(213) 734-9527
delivery available

MICHAEL SHAW, Ph.D.
CONSULTATION/PSYCHOTHERAPY

INDECISION	STRESS	COLLABORATION
TRANSITION		
COMMUNICATION	VISION	
CONCENTRATION	CONFIDENCE	

PSYCHOLOGICAL CONSULTANT
SCI-ARC + OTIS COLLEGE OF ART AND DESIGN
310.581.1076 OR MSHAW@SCIARC.EDU

Jacobus & Yuang, Inc. MBE/DBE Available
[Caltrans, LACMTA,
Construction Consultants City of LA]

Cobus Malan & Steve Hsieh
Principals each have 20 years related experience!
Cost Estimating - Value Engineering - Scheduling
520 So. Grand Avenue, Suite 360, Los Angeles, CA 90071
Tel (213) 688-1341 Fax (213) 688-1342

Design LAW

Mehrdad Farivar, AIA, Attorney at Law

11755 Wilshire Blvd., Suite 1200
Los Angeles, CA 90025
310-444-9697

Contracts
Design and Construction Defect Disputes
Claims and Liens
Mediation, Arbitration, Litigation
Work Product Review
Project Entitlements

Legal services for architects:

Upper Class

FOR YEARS, FIRST CLASS
TRAVELERS HAVE BEEN
UPGRADING TO
OUR BUSINESS CLASS.

Only Upper Class® by Virgin Atlantic features huge
sleepers complete with sleepwear and 15 inches
of extra legroom. Personal video screens at every
seat and even private chauffeured sedan service to
and from each airport. Virgin Atlantic Airways.
You really do deserve it. For information and
reservations call your travel agent or Virgin Atlantic
at 800-862-8621.

virgin atlantic

Virgin Atlantic Airways offers all non-smoking flights to Great Britain from Los Angeles, New York (JFK and Newark), Boston, Miami, Orlando, San Francisco and Washington (Dulles). Service from Milwaukee is via Boston on Midwest Express.

Classifieds

Manager Studio Design

Leading manufacturing company is seeking a 10+ years Design Manager with hands on experience in retail design work & project management. Individual will manage a small staff of designers. Graduate degree in architecture required, registered architect preferred.

Ideal candidate will have experience in retail with the ability to manage numerous corporate projects effectively while servicing the needs of individual franchisees. Must be customer service oriented and proficient at meeting deadlines. Requires proficiency in AutoCAD. Some travel involved.

We offer outstanding benefits package with a stable work environment. Fax resume to:
(310) 337-2364

12 Acres

Prime Hollywood Hills

Upslope with views. Last large development lot. Great opportunity. OWC with 25% down.
\$545,000

David - Agent: (310) 271-2191

Sublet for Fabulous Creative Space

6000 - 9000 square feet of open space in excellent westside location. Available JAN 98. Share Conference rooms and amenities. Have own area with a warehouse type structure and open floor plan. Interested in creative companies who compliment our work style and environment. Prefer architectural PR or new multi media type partner. (10 minutes from dreamworks.)
Call: (310) 264-9416

More Space

Bright, high ceiling office/studio space to share with architect in distinctive, historic building in Santa Monica. Accommodates three workstations in private area. \$675 / mo.

Melvyn Bernstein Architects
(310) 260-4731

ARCHITECTURAL PHOTOGRAPHY & DESIGN



RICHARD J. LEVY, AIA, APA
1015 N. Kings Road
Suite 115
Los Angeles, CA 90069
(213) 654-0335

Fine Art Quality Photography

- Architecture
- Historical
- Site & Vicinity
- Interiors
- Preservation
- Landscape
- Construction
- Models
- Real Estate
- HABS/HAER
- Renderings
- Documentation

For Use In

- Publications
- Displays
- Portfolio/Slides
- Brochures
- Archives
- Design Awards
- Restoration
- Drawings
- Adaptive Reuse

EYE OF THE PRACTICING ARCHITECT
EXPERIENCE OF THE VISUAL IMAGE MAKER

Positions Offered

Design-led firm in San Francisco seeks senior designers and technical architects for expanding practice, specializing in hotel/resort, corporate/commercial, and custom residential projects. Requires collaborative skills and mature judgment about people and projects. Design skill set: Initiation and development of design concepts, satisfying client program elements; hospitality experience preferred. Technical skill set: California license, 10+ years experience (Types I and III), AutoCAD, able to undertake whole areas of responsibility and produce documents. Reply to:

MPA

1174 Holman Road
Oakland, CA 94610
Tel: (888) 334-1175
Fax: (510) 452-1411

E-mail: MPAPearson@aol.com

Positions Offered

Design-led firm in Los Angeles seeks senior technical architects. Initial assignment will be a high-profile institutional project. Technical skill set: 7-10+ years experience (Type I construction), AutoCAD v13, ability to undertake whole areas of responsibility and produce documents. Requires collaborative skills and mature judgment about people and projects. Reply to:

MPA

1174 Holman Road
Oakland, CA 94610
Tel: (888) 334-1175
Fax: (510) 452-1411

E-mail: MPAPearson@aol.com

For Sale

Do your own rendering and animation with 3D Studio Release 4 and Animator Pro. Brand new / never installed. \$1200 or best offer. Please call (310) 451-7822.

Architect

Design position available with a new Los Angeles office for an architect with entertainment/commercial experience. Please fax resume to:

G. P. Smith, Morris Architects
(310) 837-1186

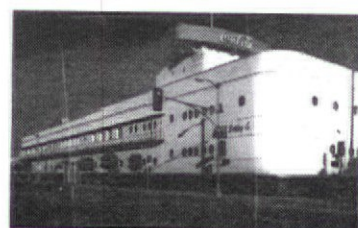
http://www.morrisarchitects.com

TIXA Wine Cellar

Custom wine racks. Earthquake locking device! Climate controlled, insulated Lay out design and free estimate. Call (213) 650-1829 or fax to (213) 650-8869.

Events Around Town

● The Western Heights Neighborhood Assoc. and Koreatown West Adams Public Safety Assoc. will host "Looking Back, Moving ahead"—a tour of ten turn of the century homes in West Adams, Sunday, September 21 to raise money for the area's proposed Koreatown West Adams Police Substation. Contact Stevie: (213) 737-7226, or Sally (213) 737-5357.



● The L.A. Conservancy's Modern Committee will present "Cruising Industrial Los Angeles" a comprehensive driving tour of the city's industrial buildings. Sites include the Citadel, old Pabst Brewery, and Coca-Cola Building (pictured). Sunday, October 5. Call (213) 623-2489.

Submissions Requested

● The Society of Architectural Historians is requesting written abstracts (max. 250 words) that can be used to address one of several topics in their upcoming Annual Meeting (see SAH, page 1). For information, call (800) 9SAH-SCC. Deadline: September 3.

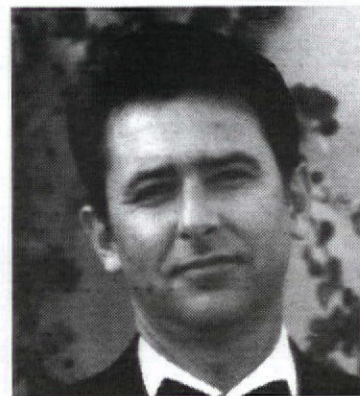
● The Architecture Foundation of Los Angeles (AFLA) in association with the Architecture and Design Council of MOCA will host the third, bi-annual "L.A. Winners" GALA on September 19. For submission information or reservations, contact AFLA at (213) 389-6490.

● The 1998 Great American Home Awards sponsored by the National Trust for Historic Preservation celebrates its 9th year. Categories include Exterior Rehabilitation, Interior Rehabilitation, Sympathetic Addition, Landscape, and Bed & Breakfasts. For entry information, call (202) 588-6283. Deadline: September 30.

● Art by Architects '97, an exhibit featuring paintings and sculptures by registered architects and landscape architects hosted by the Fisher Gallery (Albuquerque) takes place Nov. 1-23. Jurors include Bart Prince, AIA, Karin Pitman and Max Flatlow. For complete prospectus, send SASE:

ABA'97, P.O. Box 11222,
Albuquerque, NM 87192-0222





rivera design

Alberto Rivera, Assoc. AIA, studied and practiced in the US, London, Paris and Barcelona. When he established **Rivera Designs** in 1993, his comprehensive design approach and collaborations with craftsmen in related fields afforded him the ability to tackle a broad range of project types including residential, retail, warehouse, and nightclubs; exhibition work; furniture, lighting and object design.

The **United Colors of Benetton** flagship store (New York) expresses the clients' interest of showcasing its fashion, accessories and Sportssystem lines in a single megastore. Left, floating partitions double as a backdrop for the stair landing and as a screen for fitting rooms beyond. The design also incorporates a Cafe/Espresso bar to promote long term shopping.

Architects



Photos: J. Scott Smith

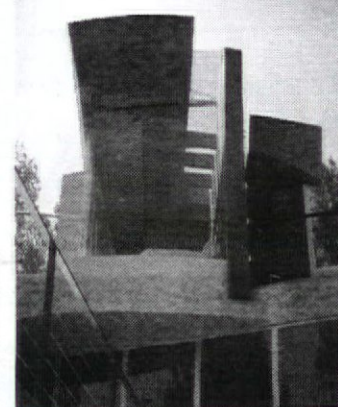


shubin+donaldson architects

Russell J. Shubin, AIA, and Robert S. Donaldson III, AIA, worked for larger firms and owned private practices prior to forming their partnership in 1993. The firm, based in Los Angeles and Santa Barbara, has residential and institutional project experience.

The **Urban Residence**, a new 4,000 sq. ft. family home, emerged from the ashes of the Laguna Beach fire in 1993. Using the opportunity to rebuild, the client asked for something "dramatic" to be built on the tight, hillside lot. The result? A contemporary home organized around a wall that bisects the house into communal and private zones with windows and skylights providing 270° views of the ocean and coast.

On the Cover



syndesis incorporated

David Hertz, AIA, founded **Syndesis, Inc.** in 1984. Probably better known for the development of **Syndecrite**, a pre-cast lightweight concrete, the firm's architectural projects are coming into their own.

Like many of the firms spotlighted in this issue, Hertz is diligent in sharing and promoting his firm's work. The pay off has been the exposure his firm receives in the numerous exhibits, publications and tours his work is featured locally and nationally.

Hertz teaches sustainable design at UCLA's Extension and the SCI-Arc Professional Development programs. His office is currently working on a rammed earth residence in Malibu Canyon as well as other projects.

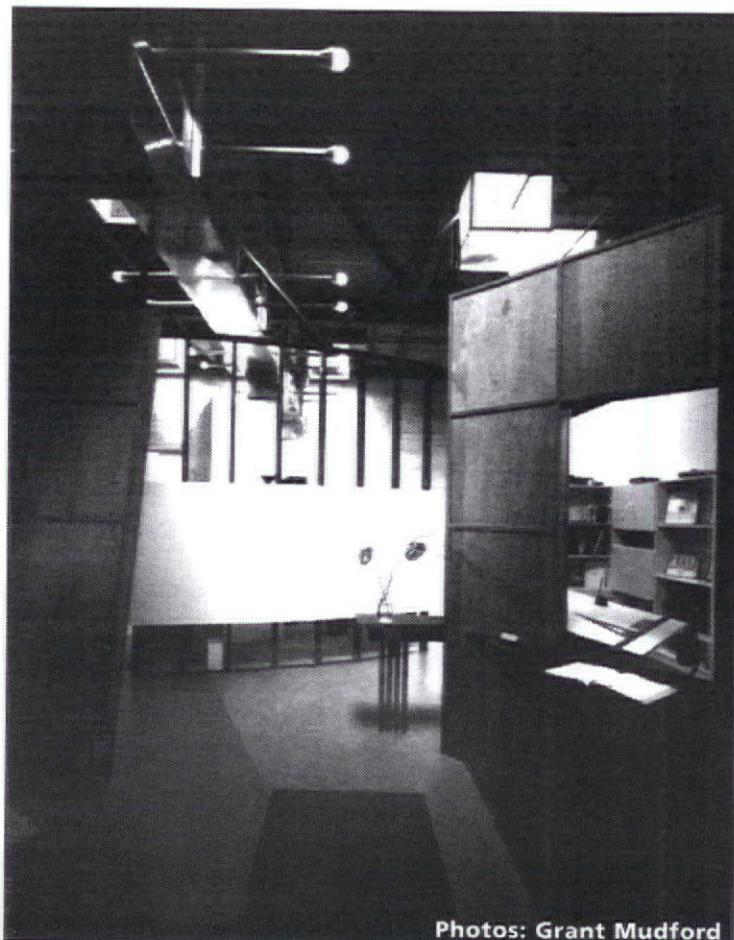
The **Bay Renovation** (shown) features a dramatic re-design and addition to a modernist building—originally designed by architect, Jerrold A. Lomax, AIA—focusing on the master suite. Floating cantilevers and floor to ceiling, frameless glass assure that no structure blocks the views.



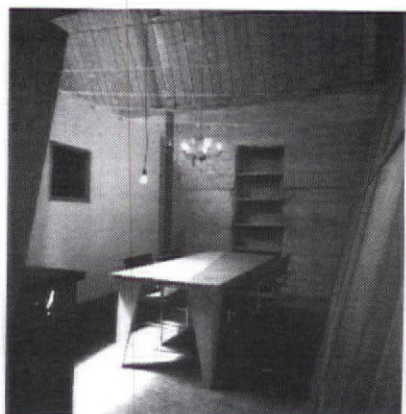
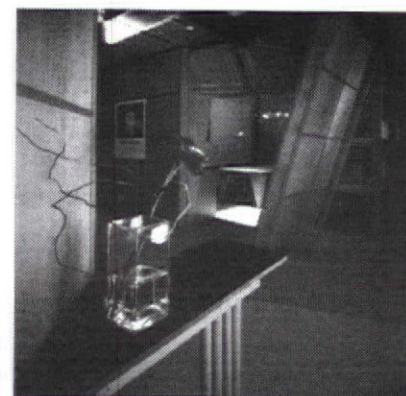
alison wright architects

Founded in 1988, **Alison Wright Architects** looks to a diverse spectrum of sources for inspiration. The design team works through a collaborative process using various backgrounds in painting, literature, sculpture and photography to inspire the design process on projects varying from small residential remodels to large industrial buildings.

Within the existing shell of the 1930's Streamline Moderne **Helms Bakery Building**, the firm's design challenge was to express a sense of the historical use while creating a strong, contemporary identity for **Johans & Son Advertising and Design** who are housed in the bakery's original mechanical vault.



Photos: Grant Mudford



Notable Quotes

"If the perspective changed the way architecture was conceived during the Renaissance, the use of the new digital imaging technologies will reinvent the very notion of Architecture."—Hraztan Zeitlian, Assoc. AIA

"Each design is approached on its individual attributes and requirements, however, certain themes are prevalent throughout the work. Form, volume, color, light, and motion are used to explore and amplify the narrative qualities suggested by a space."—Alison Wright, AIA

"Architects should have to build their own designs—at least once."—J. M. Reynolds, AIA



j. staff architect

C John Staff III, AIA, established his firm in 1989 specializing in high-end residential and commercial architecture, multi-family housing and interiors. He studied furniture and jewelry design at San Diego state as an undergraduate before choosing architecture.

The **Federal Ave. Commercial Building**, a three-unit, concrete and stainless steel clad building, expresses Staff's affinity towards light. (See inset: **Exposure Photo Studio** interior.) Staff shares an office unit with wife Lori Appel Staff, whom he met while the two studied at SCI-Arc. Lori's company was developer and builder for the project.

In an *L.A. Times* interview, Staff commented, "...I tend to think of buildings as large pieces of furniture."



Photos: J. Scott Smith

Emerging

struere

is an experimental design research group and movement which strives to advance the design of environments, furniture and industrial objects as well as design theory.

Founded in 1990 by **Hraztan Zeitlian, Assoc. AIA**, Design Principal, and **Eli Bonerz**, Designer, **Struere** pursues new architectural directions informed

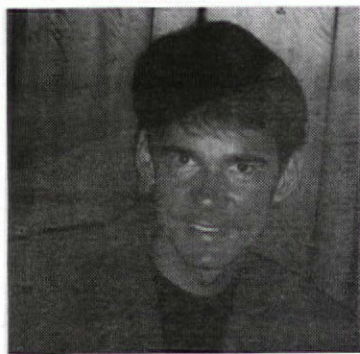
by technology and popular culture through a creative and extreme use of emerging new 3-d modeling and imaging technologies. Rounding out the group are: **Karnig Ohannessian** (Managing Principal), and **Michael Amaya** (Designer).

ESPACE Project (shown left) is a concept for a new kind of public space for the age of the internet which relies on elegantly

detailed video billboards erected above conventional one-story commercial buildings. The project was inspired by the gigantic (yet static) billboards of the Sunset Strip.

ESPACE Credits: Zeitlian,; Ohannessian; Rashmi Vasavada, designer/digital model, Mike Amaya, designer/ animator; Michael Lutz, physical model; Jason Sweers, graphic designer.

Emerging Architects Notables continues on page 8.

**landry design group**

Richard Landry, AIA worked in Canada before moving to the US. But after only three years, he says, "I

knew it was time to start my own practice." The **Landry Design Group** was incorporated in 1987.

"Learning to say 'No' to potential work has been one of [our firm's most difficult] decisions."

However, by sticking to this principal he notes, "the quality of our commissions and clients are improving with every project." As a testament to his belief, the firm

has designed more than 120 high-end residences including the **Westerman Residence** in Santa Barbara, shown below.

On the boards are a residential and multi-purpose complex in Singapore; a 40,000 sq. ft. custom residence in Jakarta, among other projects.

Architects

A Photographic Essay

New Members**AIA**

Joel Blank
Kenneth H. Drucker
Constance H. Hall
Doyle Hong
Yael S. Kimsky
Thomas Masterson
William Murray
Susan Hubbard Oakley
Rodney A. Wrang
Jed Zimmerman, Jr.

Advancing to AIA

William S. Durr, Dr.
Jim Fry
Reginald B. Hernandez

Associates

Glen W. Dunflinger, Jr.
Lori L. Hays
Elvin Leroy Nixon
Elvira Perez-Quarleri
Luke Tam
David Watson

PAL

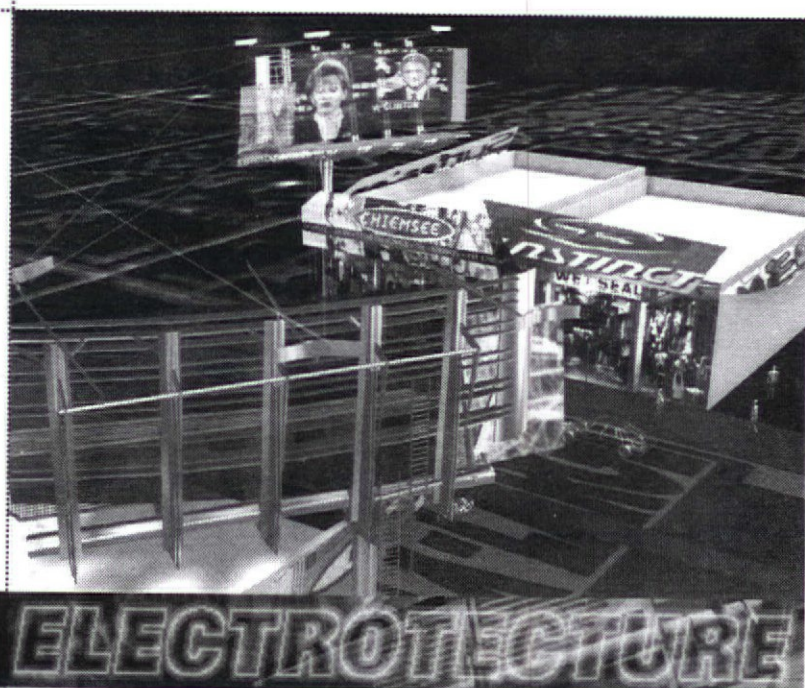
Gagan P.S. Bains
ARC Engineering
Teal Brogden
Horton Lee Lighting
Donna M. Greco
Associates Purchasing
J. Graham Keighley
J and J Construction Inc.
Tom Richard
Contract Illumination, Inc.
Ismael Rosales
Green Building Concepts

Student

Sherrilyn Arnold
Marco Izaquirre
Greg Kilpatrick
David Lam
Kenneth Lim
Krishna McIver
Bueneventura Quirino
Andrew Ratzch
L.J. Windsor



people



ELECTROTECHTURE

Editorial Board

Michael Hricak, FAIA
Co-Chair
Cynthia Mabius, AIA
Co-Chair
Dianne Bates
Charles Cordero, AIA
James Dunham
Residential Editor
Pamela Edwards Kammer, AIA
Michael Lehrer, AIA
Mitzi March Mogul
Preservation Editor
Walter Scott Perry,
Environmental Editor
Peter Mitsakos, AIA
Rinaldo Veseliza, AIA

Editor-in-Chief
Design/Production
Rochelle Dynes Mills
(310) 785-1813

Advertising Sales
(310) 785-1813

Contributors
Dianne Bates

L.A. Architect
AIA/Los Angeles
Pacific Design Center
8687 Melrose Avenue
Suite M3
Los Angeles, CA
90069-5071
Tel: (310) 785-1813
Fax: (310) 785-1814

Subscriptions
\$30 Domestic
\$48 Foreign

L.A. Architect is
published by the
Los Angeles Chapter of the
American Institute of
Architects.

L.A. Architect welcomes
your editorial suggestions
and contributions.
Contact the Editor for a
copy of the Editorial
Guidelines.

Except where noted,
the opinions stated are
those of the authors. All
efforts are made to insure
accuracy, however, neither
L.A. Architect, the AIA nor
the L.A. Chapter will be held
liable for errors, omissions,
or inaccuracies. The
appearance of names and
pictures of products and
services, in editorial,
advertising, or inserts
does not constitute
endorsement.

Who's Doing It

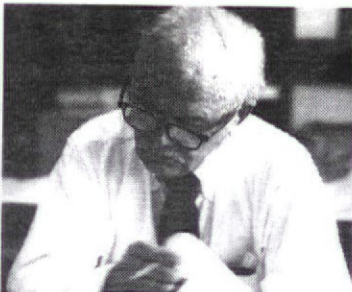
Charles Scott Wing, AIA joins the firm Lee, Burkhardt, Liu, Inc. as Assistant Principal. Georgia Lee Ford has been promoted from he position as Senior Associate to Assistant Principal. Also on the move is Tracy Calingaert, from Accounting Manager to Controller at the firm... The City of Beverly Hills presented Architectural Design Awards to four firms: Richard Meier & Partners, Pizzulli & Associates, Inc., Kirkpatrick Associates Architects, and Backen Arrigoni & Ross, Inc. for "notable contribution to the enrichment of the city"... MCG Architects has been selected to design a 10,000 sq. ft. clubhouse for the Cascades Golf Course, a new 18-hole championship golf course in Sylmar... Meléndrez Associates has received a 1997 Comprehensive Planning Award Honorable Mention from the Los Angeles Section American Planning Association (APA) as well as a Beautification Award from the Los Angeles Business Council for Public and Civic Use for their Civic Center Shared Facilities and Enhancement Plan. The team of consultants included John Fain Partners, RAW Architecture, Public Works Design, and Landmark Partners... Giuseppe Aliano and Karl Schoenbaum have been named Associates at

the Santa Monica based firm, Killefer Flammang Purtil Architects... Ehrenkrantz & Eckstut Architects has changed their name to Ehrenkrantz Eckstut & Kuhn Architects, PC in recognition of the promotion of principal Denis Glen Kuhn, FAIA—who has been with the firm for over 30 years—to partner... ●

Oops!

In the last issue of *L.A. Architect*, we erroneously listed Barbara Bestor, AIA as the sole architect of the Verrone Residence. The home was designed by both Barbara Bestor, AIA and Norman Millar.

In Memorium



Burnett C. Turner, FAIA died March 28. Active in the Chapter and the architecture community, he was instrumental in rewriting the L.A. Chapter by-laws some 20 years ago. During his practice, he developed a master plan for the Pueblo de Los Angeles which is still consulted today. Turner was 95.

architecture... On Exhibit

● **Macintosh Exhibit** at Los Angeles County Museum of Art, a retrospective of architectural renderings, textiles, furnishings and other works by noted British architect, furniture designer and artist, Charles Rennie Mackintosh **thru October 5.** (213) 957-0800

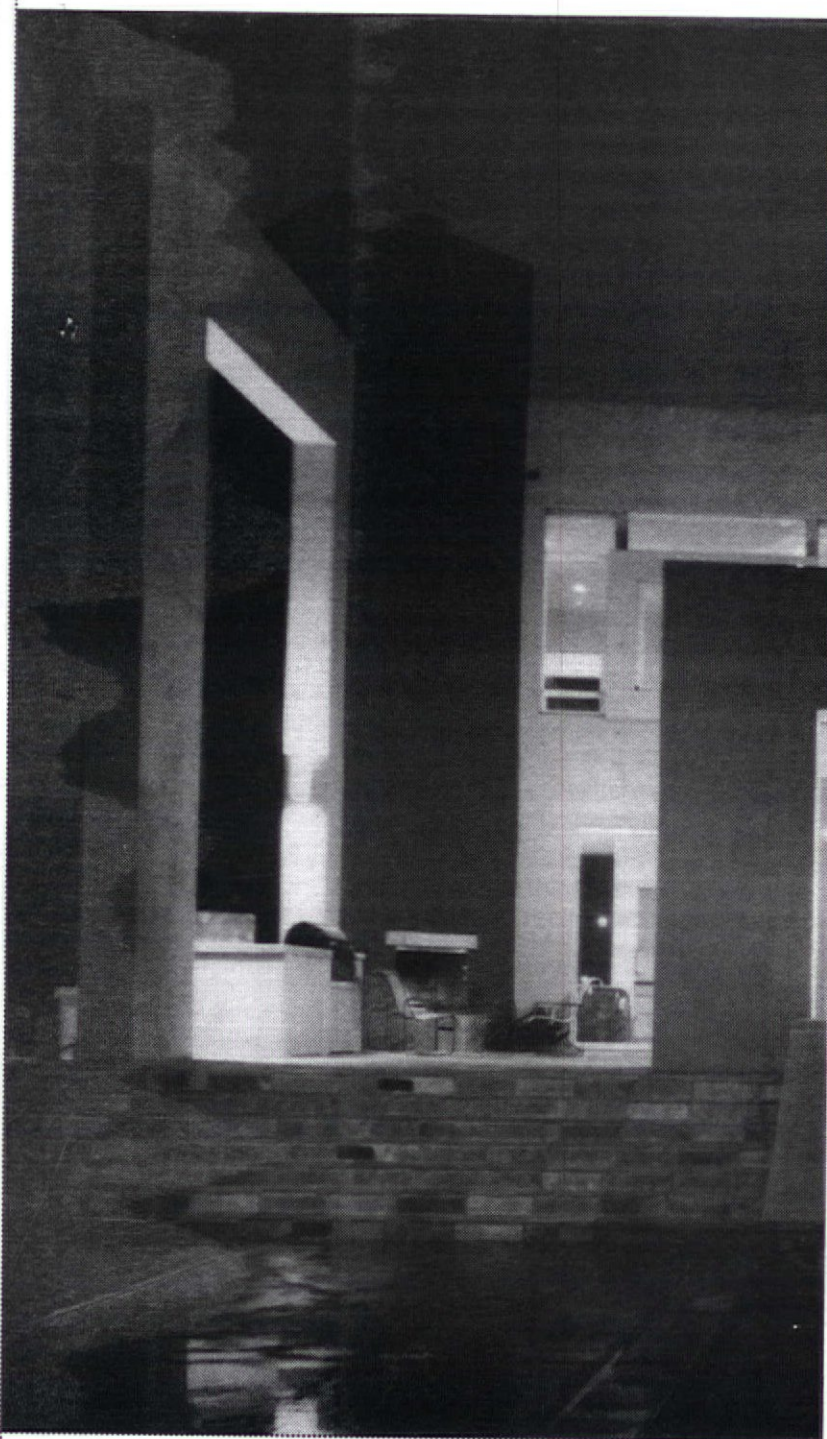
● **Architecture in Balance: 7 Southern California Architects** features work by Victoria Casasco; Richard Corsini (organizer and curator of this exhibit); Daly, Genik; Johnson, Favro; Lubowicki/Lanier, and Lorcan O'Herlihy continues **thru August** at the **Armory Center for the Arts.** (818) 792-5101

● **Steven Ehrlich Architects: World Beat Architecture**, a retrospective exhibition of selected works and upcoming projects continues **thru November 30** at the **Hollyhock House Gallery.** (213) 913-4157

● ...an exhibition of works by celebrated photographer, **Marvin Rand.** A long time member and friend of the Chapter, Rand's photographs include several new architectural and geological studies. The exhibition continues **thru the Fall** at the **AIA/LA Chapter office.** (310) 785-1809

● The **Walt Disney Concert Hall Committee** has relocated to **330 S. Hope St.** taking the Concert Hall models with them. The models are available for public viewing **Fridays, 11:00 a.m. - 3:00 p.m.**

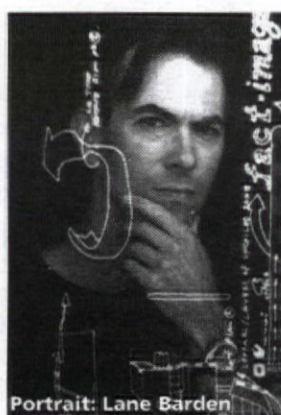
Emerging



L.A. Architect

1
L.A. Architect August/September 1997

SCI-Arc Selects New Director



Portrait: Lane Barden

The Board of Directors of the Southern California Institute of Architecture (SCI-Arc) has named Los Angeles architect Neil M. Denari to the position of SCI-Arc Director. The third architect to hold the post, Denari will succeed Michael Rotondi, who has served as director since 1987. Denari was selected from a pool of four other candidates which included Sheila Kennedy, Principal, Kennedy & Violich Architecture (Boston), Robert Mangurian and Mary-Ann Ray, Principals, Studio Works (Los Angeles), Samuel Mockbee, Partner, Mockbee/Coker Architects (Canton, MS/Memphis, TN) and Lebbeus Woods, Architect (New York).

Denari, principal of Cor-Tex Architecture, has for the past nine years been involved in a number of architectural projects including exhibition designs for Columbia University, Japan Association for the Promotion of Events, Museum of Modern Art-Sydney, and Gallery of Functional Art. He recently won a design award from *ID* magazine for an experimental interior constructed at Gallery MA in Tokyo.

No stranger to SCI-Arc, Denari has also served for nine years as a SCI-Arc instructor offering such design studio topics as "The Love and Futility of Postlinearity." Teaching credits include Columbia University, Shibusawa Institute of Technology in Tokyo, University of Texas at Arlington, The Bartlett at University College of London, and Texas A & M University.

Says Denari, "After Ray Kappe and Michael Rotondi, my project as director will be to carry on the vital aspects of their work, while at the same time, moving the school into newer and more intense territories of knowledge and research. I think the next period of work at SCI-Arc will deal directly with, on both a local and global level, the profound shifts occurring in the social, urban and technological landscapes around us."—RDM

Kennard Design Group Celebrates 40th

The Kennard Design Group, formerly named KDG Architecture & Planning, celebrates its fortieth anniversary this month. Founded by Robert Kennard, FAIA, in 1957, and now managed by his daughter, Gail Kennard Madyun, it is the oldest, continuously operating black owned firm in the West.

KDG has completed more than 700 pro-



jects throughout California, the US and abroad notably, Carson City Hall and Community Center, the Van Nuys State Office Building, and the Wilshire/ Normandie Metro Red Line Station. Current projects include a new ticket office, Museum store and plaza at the Hollywood Bowl, the soon to open City of Los Angeles 77th St. Regional Police Facility (rendering above) and a \$36 million Trauma Center addition at King/Drew Medical.—RDM

SAH to Head West

The 51st Annual Meeting of the national Society of Architectural Historians (SAH) will come to Los Angeles April 15 - 19, 1998. The annual meeting will draw several hundred historians and related professionals to the area to participate in forums, symposia and a host of architectural tours related to architectural history in general and the California's contribution to architectural landscape in particular.

The selection of Southern California as a venue offers an opportunity for SAH to broach a diverse range of topics not traditionally associated with the architectural historian community or the "academic" climate of meetings past. Session topics include: Public Spaces, Women's Spaces; Scenography and Architecture Since 1890; Architectural History and its Companions; Competing Modernisms; QueerSpace: An Examination of Gay and Lesbian Historic Environments; Decorative Arts in Historic Interiors, and Architecture as Seen in Ethnic American Communities.—RDM

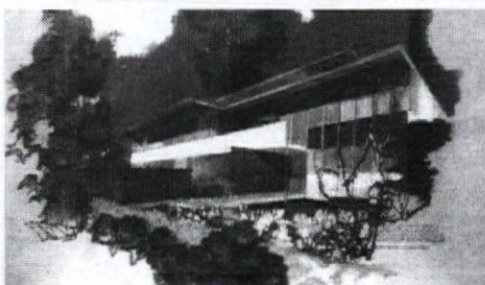
Pei Selected for UCLA Medical Center

UCLA Medical Center and the health sciences complex has selected I.M. Pei, FAIA as the chief planner for the construction of new hospital facilities to replace current facilities which sustained significant structural damage in the 1994 Northridge earthquake. Pei will work with Pei Partnership Architects founded by sons, Chien Chung Pei, AIA and Li Chung Pei, AIA. Rounding out the construction consulting team are Lee, Burkhardt, Liu; Cesar Pelli Associates, and Perkins and Will.

The project requirements include creating a state-of-the-art facility that is seismically sound, increases space for research, and takes

into account medical practices of the 21st century without extending beyond the boundaries of the existing facilities, or disrupting current medical services or access to the campus.

The project, which may begin construction as early as 1998 with a completion goal of 2010, is currently undergoing a \$300 million private fund-raising effort. The capital raised is in addition to the \$432 million in construction funds provided by FEMA.—RDM



Silverlake Research House Rendering by Richard J. Neutra, on view at Couturier Gallery

Neutra on Exhibit

Richard Neutra's legendary Lovell House (1929) introduced "international style" residential architecture to the United States. His steel and glass frame structures allowed for a perfect melding of environment and habitat.

Couturier Gallery, 166 N. La Brea Ave., will mount an exhibit of drawings and renderings, *objets*, and original prototype furniture by Richard J. Neutra, October 17 - November 29. Co-curated by Dion Neutra, son and architectural partner of Richard, the works are comprised mostly of projects from the 1940's thru the 1960's, the majority of which have never been exhibited and will be available for purchase. Included are two extremely rare renderings submitted as proposals for the design competition of Griffith Park Observatory, and drawings of an elaborate estate for Howard Hawks which was never built.

In conjunction with the exhibit, Dion Neutra will lecture at the gallery on Sunday, October 26. A tour of Neutra's work, organized in conjunction with the exhibit, will occur in mid-November.—Dianne Bates

(See *Architecture on Exhibit*, page 2.)

MOCA Adds New Architectural Element

The Museum of Contemporary Art is constructing a glass and metal canopy—actually one of MOCA architect, Arata Isozaki's, proposed early refinements to the completed museum. Isozaki worked with the late Peter Rice of Ove Arup & Partners to design the tensile structure which will float above ARCO Court adjacent to the galleries' lobby and allow views of the sky overhead.

Construction of "the translucent cloud" is currently underway and is expected to be completed in early September.—RDM

AIA/Los Angeles

Officers

Ted T. Tanaka, FAIA
President
Robert Newsom, AIA
Vice President
Bernard Altman, AIA
Secretary
Cynthia Mabus, AIA
Treasurer

Directors

Michael Hricak, FAIA
Past President
Clifton P. Allen, AIA
Ildiko Choy, AIA
Stephen O. Converse, AIA
Gary Dempster, AIA
Andrea Cohen Gehring, AIA
Michael Lehrer, AIA
Robert Nasraway, AIA
Merry Norris, Hon. AIA
Leslie Young, Assoc. AIA
President,
AIA/LA Associates
Sally Landworth, Hon. AIA
WAL Representative
Mark Rios, AIA
AFLA Representative

AIA/CC Regional Board Members

Lance Bird, AIA
National Representative
Carl Meyer, AIA
AIA/CC Delegate
Gordon Park, AIA
AIA/CC Delegate

Ex-Officio

Board Members
Peter Borrego, Dean
Otis School of Art and Design
Jeffrey Daniels, AIA, Chair
Architecture, Interior and Environmental Design Program,
UCLA Extension
Sylvia Lavin, Dean
Department of Architecture, UCLA
Lou Naidorf, FAIA, Dean
School of Architecture
Woodbury University
Michael Rotondi, FAIA
Director,
Southern California Institute of Architecture
Linda Sanders, Dean
School of Architecture
California State Polytechnic University,
Pomona
Robert H. Timme, FAIA,
Dean
School of Architecture
University of Southern California

Nicola Solomons
Executive Director
Maria O'Malley
Membership Director
Tel: (310) 785-1809
Fax: (310) 785-1814