

# LA/AIA Design Awards 1986

## Honor Awards

### Introduction

This year's 154 submittals for LA/AIA Design Awards represent the broad range of practice of our members. The jury was a distinguished one: Fumihiko Maki from Japan, Arthur May, AIA from Kohn Petersen Fox Associates in New York and Dr. Kurt Forster, architectural historian and the Director of the Getty Center in Los Angeles. The jury was selected for their varied

viewpoints, for their familiarity with Southern California, and for their stature in the profession in order that our work would face a demanding review.

The jury gave 13 awards, 7 Honor and 6 Merit, in 10 different categories. Despite their visual prominence in our cities, relatively few high-rise buildings were submitted and again none were recommended for an award; a possible commentary on the general

quality of design or angst about this building form.

In any event, the award-winning projects are instructive. They are commonplace project types using commonplace materials but are most uncommon in the design talent which has been brought to them.

In most cases the project programs must have seemed mundane indeed; a small speculative office building on a stringbean site, an industrial testing facility, or a low-

income housing project. These 13 projects received awards because their architects succeeded in doing what most of us only attempt—to transform the ordinary into the exceptional.

#### Awards Jury:

Fumihiko Maki

Arthur May, AIA

Dr. Kurt Forster

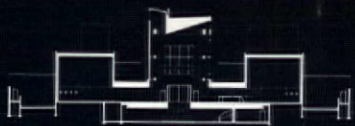
Chairman of the Awards Committee

Lou Naidorf, FAIA

## Frances Goldwyn Regional Branch Library

## Cultural

*Architects:* Frank O. Gehry & Associates  
*Owner:* City of Los Angeles Public Library  
*Contractor:* J.A. Stewart Construction



MICHAEL MORAN



MICHAEL MORAN

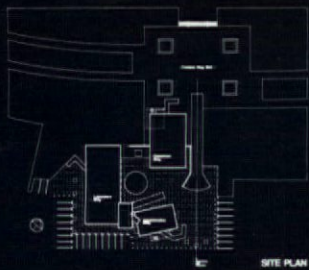
#### Jury Comments

Built in a difficult location, obliged to respect many different limitations, this highly successful public building strikes some as more willfully sculptural than architecturally accomplished. Everyone recognizes its unique balance of informal dignity and civic purpose. A marvellously sculptural composition with a dynamic rapport among its parts and a strong use of light inside and out. The Goldwyn Library demonstrates that a certain grandeur and inventive power can be realized even on a modest budget.

## I & C S/ERF

## Educational

*Architects:* Frank O. Gehry & Associates  
*Owner:* University of California, Irvine  
*Contractor:* Architectural Design Services



TIM STREET PORTER



TIM STREET PORTER

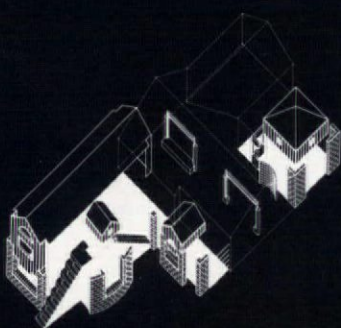
#### Jury Comments

The forms of these engineered buildings are familiar but grouped together as they are here, they become unfamiliar and powerful. Different materials and colors both accentuate separate parts and tie starkly volumetric units into a composition. A splendid stage of eminently architectural character and powerful public imagery.

## Bernstein Residence

## Residential Remodel

*Architects:* R.L. Binder, AIA, Architects  
*Owner:* Frederic & Kaye Bernstein  
*Contractor:* Herman Construction Co.



R.L. BINDER



R.L. BINDER



MARVIN RAND

#### Jury Comments

A beautiful transformation of a humdrum house into a strongly-composed, lovingly-detailed residence. A near-monumental vocabulary is introduced on a modest scale, creating a rich and spatially sophisticated environment far beyond the ordinary house.



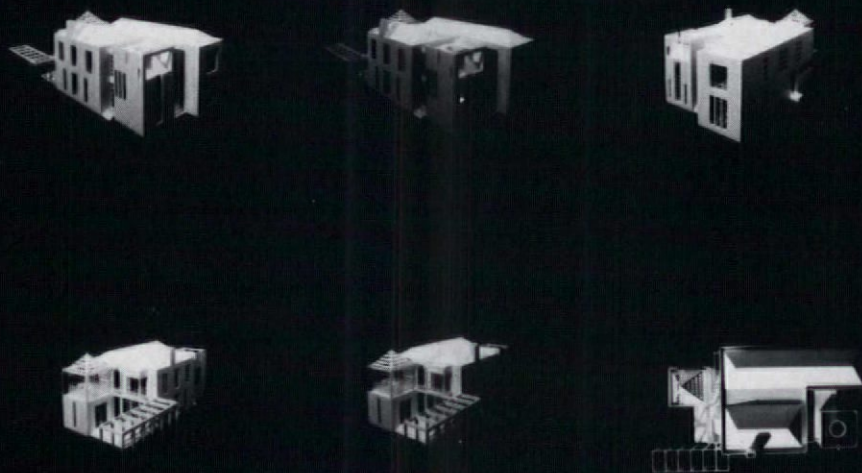
## House C

*Architect:* Panos Koulermos, AIA, RIBA  
*Owner:* Mr. & Mrs. J. Caloyeras

## Unbuilt

### Jury Comments

A sophisticated definition of interior spaces and neatly-balanced exterior volumes. The purposeful variety of windows forms handsome and disciplined patterns, enhancing the play of closed and open volumes.



## Yorkshire Terrace

*Architects:* John Vaughan Mutlow, A.I.A.  
*Owner:* Pico Union Housing Corp.  
*Contractor:* J.H. Hedrick & Company

## Multi-Family Residential

### Jury Comments

This tightly-organized, economic cluster of apartments possesses a sense of amenity and scale. Deliberately patterned on the traditional Los Angeles courtyard houses, Yorkshire Terrace combines highly-efficient, thoughtfully-planned interiors with dignified exteriors. Privacy and public presence are handsomely balanced and the interior court with its use of colors and elementary shapes results in a delightful housing project.



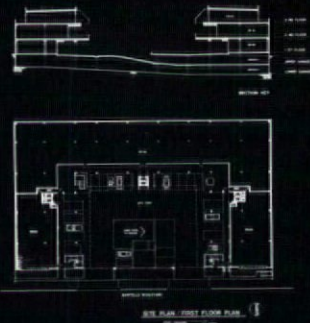
## Sawtelle Place

## Small Commercial

*Architects:* Urmston, Stiehl Assoc., Inc.  
*Owner:* Yehuda Netanel, Inc.  
*Contractor:* Fassberg Construction

### Jury Comments

Based on a simple, strong plan, Sawtelle Place frames its lot with cheerful facades. Handsome detailing enhances the sense of frontality and orientation to the street. Too bad the central court had to be given over to parking.

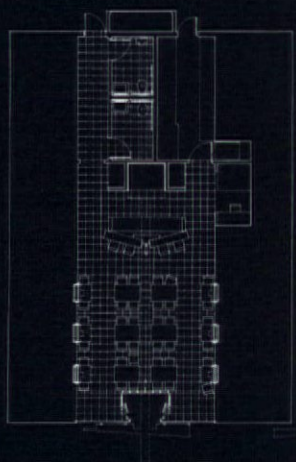




## Awards of Merit

### Cafe Pizzeria Angeli

*Architects:* Mayne-Rotondi Architects  
*Owner:* Evan Kleiman and John Strobel  
*Contractor:* Marty Herling Construction



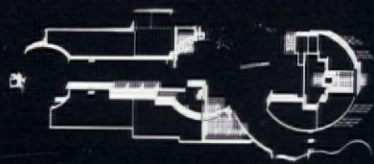
### Commercial Remodel

#### Jury Comments

A perhaps perversely idiosyncratic project which possesses many refinements without losing spatial clarity. Sculptural elaboration and whimsical detailing enrich a basically simple and effective concept.

### L.A. Zoo Entrance/Mall

*Architects:* John Aleksich Associates  
*Owner:* G.L.A.Z.A.  
*Contractor:* Dillingham Construction

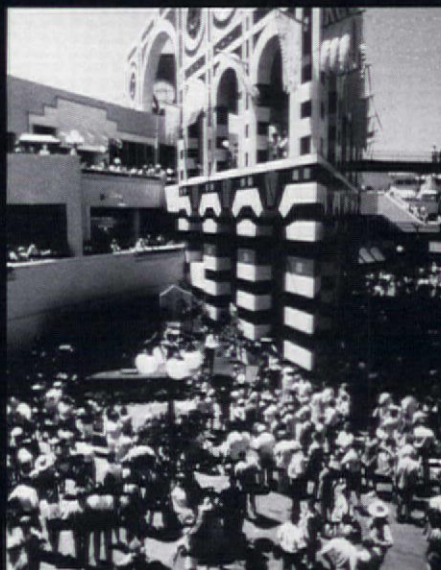
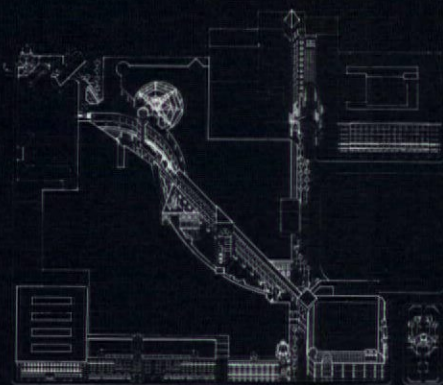


#### Jury Comments

A pleasant and unimposing way to receive people, appropriate in gesture and inviting in every part. A small and narrow approach is elegantly organized and ornamented with crisp lettering. One juror thought the graphics the best thing and hoped the architect didn't have a graphics consultant.

### Horton Plaza

*Architects:* The Jerde Partnership Inc.  
*Owner:* The Hahn Company  
*Contractor:* Nu-Hahn



### Commercial

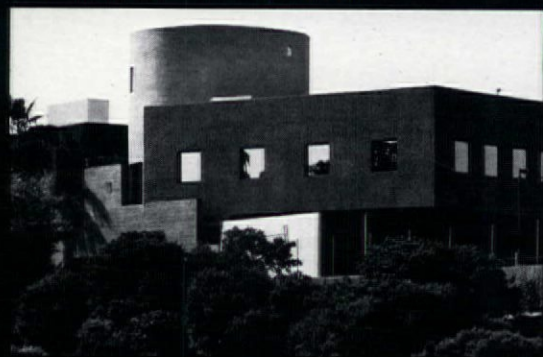
#### Jury Comments

This project, with its razzle-dazzle and unvarnished mix of architectural forms is as willful as it is lively and successful. It raises basic cornball stuff momentarily to an effective level of ephemeral design.



## Arlington II Office Building

Architects: John Aleksich Associates  
Owner: Robert Englekirk  
Contractor: Beam Construction



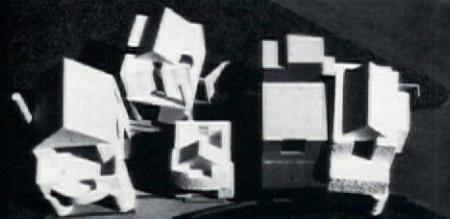
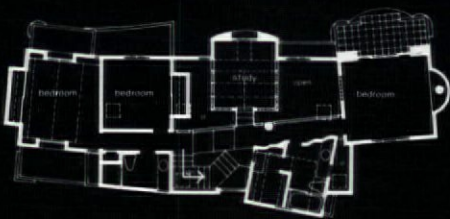
## Small Commercial

### Jury Comments

On a near impossible site, this speculative office building is intelligently located and cleverly differentiated. Inexpensive materials, simple but thoughtful detailing, and an effective use of colors combine to lend the building identity, even a stage-like presence. Memorable, in an almost unreal sense, this group of structures dignifies an ordinary purpose with an inventive set of basic building forms.

## Croyden House

Architects: William Adams Architect AIA  
Owner: William and Sue Adams  
Contractor: Bolton & MacAllister Construction



## Single Family Residential

### Jury Comments

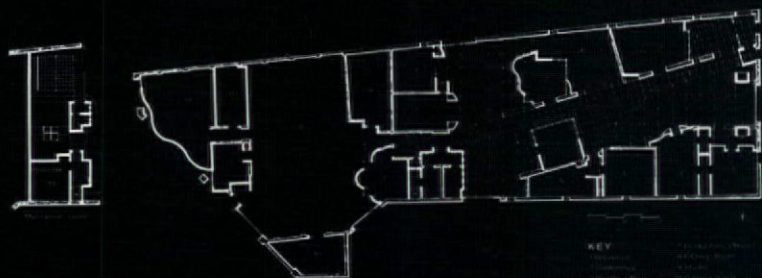
A very livable house with an inventive plan. Its complexities seem to add up to quite a lot. The sequence of pavilion-like units, each scaled separately, enriches the occupant's sense of passage and experience of individual parts in the house. While the exterior experience strongly conveys the sense of a house—a particularly refreshing aspect in the eyes of one juror—real materials, instead of colors, might have strengthened it further.



STEW HOPKINS

## Pytko Film Studio

Architects: William Adams Architects  
Owner: Joseph Pytko  
Contractor: Sandpiper Construction



KEY  
1. Reception  
2. Office  
3. Conference Room  
4. Studio  
5. Studio  
6. Studio  
7. Studio  
8. Studio  
9. Studio  
10. Studio  
11. Studio  
12. Studio  
13. Studio  
14. Studio  
15. Studio  
16. Studio  
17. Studio  
18. Studio  
19. Studio  
20. Studio  
21. Studio  
22. Studio  
23. Studio  
24. Studio  
25. Studio  
26. Studio  
27. Studio  
28. Studio  
29. Studio  
30. Studio  
31. Studio  
32. Studio  
33. Studio  
34. Studio  
35. Studio  
36. Studio  
37. Studio  
38. Studio  
39. Studio  
40. Studio  
41. Studio  
42. Studio  
43. Studio  
44. Studio  
45. Studio  
46. Studio  
47. Studio  
48. Studio  
49. Studio  
50. Studio  
51. Studio  
52. Studio  
53. Studio  
54. Studio  
55. Studio  
56. Studio  
57. Studio  
58. Studio  
59. Studio  
60. Studio  
61. Studio  
62. Studio  
63. Studio  
64. Studio  
65. Studio  
66. Studio  
67. Studio  
68. Studio  
69. Studio  
70. Studio  
71. Studio  
72. Studio  
73. Studio  
74. Studio  
75. Studio  
76. Studio  
77. Studio  
78. Studio  
79. Studio  
80. Studio  
81. Studio  
82. Studio  
83. Studio  
84. Studio  
85. Studio  
86. Studio  
87. Studio  
88. Studio  
89. Studio  
90. Studio  
91. Studio  
92. Studio  
93. Studio  
94. Studio  
95. Studio  
96. Studio  
97. Studio  
98. Studio  
99. Studio  
100. Studio  
101. Studio  
102. Studio  
103. Studio  
104. Studio  
105. Studio  
106. Studio  
107. Studio  
108. Studio  
109. Studio  
110. Studio  
111. Studio  
112. Studio  
113. Studio  
114. Studio  
115. Studio  
116. Studio  
117. Studio  
118. Studio  
119. Studio  
120. Studio  
121. Studio  
122. Studio  
123. Studio  
124. Studio  
125. Studio  
126. Studio  
127. Studio  
128. Studio  
129. Studio  
130. Studio  
131. Studio  
132. Studio  
133. Studio  
134. Studio  
135. Studio  
136. Studio  
137. Studio  
138. Studio  
139. Studio  
140. Studio  
141. Studio  
142. Studio  
143. Studio  
144. Studio  
145. Studio  
146. Studio  
147. Studio  
148. Studio  
149. Studio  
150. Studio  
151. Studio  
152. Studio  
153. Studio  
154. Studio  
155. Studio  
156. Studio  
157. Studio  
158. Studio  
159. Studio  
160. Studio  
161. Studio  
162. Studio  
163. Studio  
164. Studio  
165. Studio  
166. Studio  
167. Studio  
168. Studio  
169. Studio  
170. Studio  
171. Studio  
172. Studio  
173. Studio  
174. Studio  
175. Studio  
176. Studio  
177. Studio  
178. Studio  
179. Studio  
180. Studio  
181. Studio  
182. Studio  
183. Studio  
184. Studio  
185. Studio  
186. Studio  
187. Studio  
188. Studio  
189. Studio  
190. Studio  
191. Studio  
192. Studio  
193. Studio  
194. Studio  
195. Studio  
196. Studio  
197. Studio  
198. Studio  
199. Studio  
200. Studio  
201. Studio  
202. Studio  
203. Studio  
204. Studio  
205. Studio  
206. Studio  
207. Studio  
208. Studio  
209. Studio  
210. Studio  
211. Studio  
212. Studio  
213. Studio  
214. Studio  
215. Studio  
216. Studio  
217. Studio  
218. Studio  
219. Studio  
220. Studio  
221. Studio  
222. Studio  
223. Studio  
224. Studio  
225. Studio  
226. Studio  
227. Studio  
228. Studio  
229. Studio  
230. Studio  
231. Studio  
232. Studio  
233. Studio  
234. Studio  
235. Studio  
236. Studio  
237. Studio  
238. Studio  
239. Studio  
240. Studio  
241. Studio  
242. Studio  
243. Studio  
244. Studio  
245. Studio  
246. Studio  
247. Studio  
248. Studio  
249. Studio  
250. Studio  
251. Studio  
252. Studio  
253. Studio  
254. Studio  
255. Studio  
256. Studio  
257. Studio  
258. Studio  
259. Studio  
260. Studio  
261. Studio  
262. Studio  
263. Studio  
264. Studio  
265. Studio  
266. Studio  
267. Studio  
268. Studio  
269. Studio  
270. Studio  
271. Studio  
272. Studio  
273. Studio  
274. Studio  
275. Studio  
276. Studio  
277. Studio  
278. Studio  
279. Studio  
280. Studio  
281. Studio  
282. Studio  
283. Studio  
284. Studio  
285. Studio  
286. Studio  
287. Studio  
288. Studio  
289. Studio  
290. Studio  
291. Studio  
292. Studio  
293. Studio  
294. Studio  
295. Studio  
296. Studio  
297. Studio  
298. Studio  
299. Studio  
300. Studio  
301. Studio  
302. Studio  
303. Studio  
304. Studio  
305. Studio  
306. Studio  
307. Studio  
308. Studio  
309. Studio  
310. Studio  
311. Studio  
312. Studio  
313. Studio  
314. Studio  
315. Studio  
316. Studio  
317. Studio  
318. Studio  
319. Studio  
320. Studio  
321. Studio  
322. Studio  
323. Studio  
324. Studio  
325. Studio  
326. Studio  
327. Studio  
328. Studio  
329. Studio  
330. Studio  
331. Studio  
332. Studio  
333. Studio  
334. Studio  
335. Studio  
336. Studio  
337. Studio  
338. Studio  
339. Studio  
340. Studio  
341. Studio  
342. Studio  
343. Studio  
344. Studio  
345. Studio  
346. Studio  
347. Studio  
348. Studio  
349. Studio  
350. Studio  
351. Studio  
352. Studio  
353. Studio  
354. Studio  
355. Studio  
356. Studio  
357. Studio  
358. Studio  
359. Studio  
360. Studio  
361. Studio  
362. Studio  
363. Studio  
364. Studio  
365. Studio  
366. Studio  
367. Studio  
368. Studio  
369. Studio  
370. Studio  
371. Studio  
372. Studio  
373. Studio  
374. Studio  
375. Studio  
376. Studio  
377. Studio  
378. Studio  
379. Studio  
380. Studio  
381. Studio  
382. Studio  
383. Studio  
384. Studio  
385. Studio  
386. Studio  
387. Studio  
388. Studio  
389. Studio  
390. Studio  
391. Studio  
392. Studio  
393. Studio  
394. Studio  
395. Studio  
396. Studio  
397. Studio  
398. Studio  
399. Studio  
400. Studio  
401. Studio  
402. Studio  
403. Studio  
404. Studio  
405. Studio  
406. Studio  
407. Studio  
408. Studio  
409. Studio  
410. Studio  
411. Studio  
412. Studio  
413. Studio  
414. Studio  
415. Studio  
416. Studio  
417. Studio  
418. Studio  
419. Studio  
420. Studio  
421. Studio  
422. Studio  
423. Studio  
424. Studio  
425. Studio  
426. Studio  
427. Studio  
428. Studio  
429. Studio  
430. Studio  
431. Studio  
432. Studio  
433. Studio  
434. Studio  
435. Studio  
436. Studio  
437. Studio  
438. Studio  
439. Studio  
440. Studio  
441. Studio  
442. Studio  
443. Studio  
444. Studio  
445. Studio  
446. Studio  
447. Studio  
448. Studio  
449. Studio  
450. Studio  
451. Studio  
452. Studio  
453. Studio  
454. Studio  
455. Studio  
456. Studio  
457. Studio  
458. Studio  
459. Studio  
460. Studio  
461. Studio  
462. Studio  
463. Studio  
464. Studio  
465. Studio  
466. Studio  
467. Studio  
468. Studio  
469. Studio  
470. Studio  
471. Studio  
472. Studio  
473. Studio  
474. Studio  
475. Studio  
476. Studio  
477. Studio  
478. Studio  
479. Studio  
480. Studio  
481. Studio  
482. Studio  
483. Studio  
484. Studio  
485. Studio  
486. Studio  
487. Studio  
488. Studio  
489. Studio  
490. Studio  
491. Studio  
492. Studio  
493. Studio  
494. Studio  
495. Studio  
496. Studio  
497. Studio  
498. Studio  
499. Studio  
500. Studio  
501. Studio  
502. Studio  
503. Studio  
504. Studio  
505. Studio  
506. Studio  
507. Studio  
508. Studio  
509. Studio  
510. Studio  
511. Studio  
512. Studio  
513. Studio  
514. Studio  
515. Studio  
516. Studio  
517. Studio  
518. Studio  
519. Studio  
520. Studio  
521. Studio  
522. Studio  
523. Studio  
524. Studio  
525. Studio  
526. Studio  
527. Studio  
528. Studio  
529. Studio  
530. Studio  
531. Studio  
532. Studio  
533. Studio  
534. Studio  
535. Studio  
536. Studio  
537. Studio  
538. Studio  
539. Studio  
540. Studio  
541. Studio  
542. Studio  
543. Studio  
544. Studio  
545. Studio  
546. Studio  
547. Studio  
548. Studio  
549. Studio  
550. Studio  
551. Studio  
552. Studio  
553. Studio  
554. Studio  
555. Studio  
556. Studio  
557. Studio  
558. Studio  
559. Studio  
560. Studio  
561. Studio  
562. Studio  
563. Studio  
564. Studio  
565. Studio  
566. Studio  
567. Studio  
568. Studio  
569. Studio  
570. Studio  
571. Studio  
572. Studio  
573. Studio  
574. Studio  
575. Studio  
576. Studio  
577. Studio  
578. Studio  
579. Studio  
580. Studio  
581. Studio  
582. Studio  
583. Studio  
584. Studio  
585. Studio  
586. Studio  
587. Studio  
588. Studio  
589. Studio  
590. Studio  
591. Studio  
592. Studio  
593. Studio  
594. Studio  
595. Studio  
596. Studio  
597. Studio  
598. Studio  
599. Studio  
600. Studio  
601. Studio  
602. Studio  
603. Studio  
604. Studio  
605. Studio  
606. Studio  
607. Studio  
608. Studio  
609. Studio  
610. Studio  
611. Studio  
612. Studio  
613. Studio  
614. Studio  
615. Studio  
616. Studio  
617. Studio  
618. Studio  
619. Studio  
620. Studio  
621. Studio  
622. Studio  
623. Studio  
624. Studio  
625. Studio  
626. Studio  
627. Studio  
628. Studio  
629. Studio  
630. Studio  
631. Studio  
632. Studio  
633. Studio  
634. Studio  
635. Studio  
636. Studio  
637. Studio  
638. Studio  
639. Studio  
640. Studio  
641. Studio  
642. Studio  
643. Studio  
644. Studio  
645. Studio  
646. Studio  
647. Studio  
648. Studio  
649. Studio  
650. Studio  
651. Studio  
652. Studio  
653. Studio  
654. Studio  
655. Studio  
656. Studio  
657. Studio  
658. Studio  
659. Studio  
660. Studio  
661. Studio  
662. Studio  
663. Studio  
664. Studio  
665. Studio  
666. Studio  
667. Studio  
668. Studio  
669. Studio  
670. Studio  
671. Studio  
672. Studio  
673. Studio  
674. Studio  
675. Studio  
676. Studio  
677. Studio  
678. Studio  
679. Studio  
680. Studio  
681. Studio  
682. Studio  
683. Studio  
684. Studio  
685. Studio  
686. Studio  
687. Studio  
688. Studio  
689. Studio  
690. Studio  
691. Studio  
692. Studio  
693. Studio  
694. Studio  
695. Studio  
696. Studio  
697. Studio  
698. Studio  
699. Studio  
700. Studio  
701. Studio  
702. Studio  
703. Studio  
704. Studio  
705. Studio  
706. Studio  
707. Studio  
708. Studio  
709. Studio  
710. Studio  
711. Studio  
712. Studio  
713. Studio  
714. Studio  
715. Studio  
716. Studio  
717. Studio  
718. Studio  
719. Studio  
720. Studio  
721. Studio  
722. Studio  
723. Studio  
724. Studio  
725. Studio  
726. Studio  
727. Studio  
728. Studio  
729. Studio  
730. Studio  
731. Studio  
732. Studio  
733. Studio  
734. Studio  
735. Studio  
736. Studio  
737. Studio  
738. Studio  
739. Studio  
740. Studio  
741. Studio  
742. Studio  
743. Studio  
744. Studio  
745. Studio  
746. Studio  
747. Studio  
748. Studio  
749. Studio  
750. Studio  
751. Studio  
752. Studio  
753. Studio  
754. Studio  
755. Studio  
756. Studio  
757. Studio  
758. Studio  
759. Studio  
760. Studio  
761. Studio  
762. Studio  
763. Studio  
764. Studio  
765. Studio  
766. Studio  
767. Studio  
768. Studio  
769. Studio  
770. Studio  
771. Studio  
772. Studio  
773. Studio  
774. Studio  
775. Studio  
776. Studio  
777. Studio  
778. Studio  
779. Studio  
780. Studio  
781. Studio  
782. Studio  
783. Studio  
784. Studio  
785. Studio  
786. Studio  
787. Studio  
788. Studio  
789. Studio  
790. Studio  
791. Studio  
792. Studio  
793. Studio  
794. Studio  
795. Studio  
796. Studio  
797. Studio  
798. Studio  
799. Studio  
800. Studio  
801. Studio  
802. Studio  
803. Studio  
804. Studio  
805. Studio  
806. Studio  
807. Studio  
808. Studio  
809. Studio  
810. Studio  
811. Studio  
812. Studio  
813. Studio  
814. Studio  
815. Studio  
816. Studio  
817. Studio  
818. Studio  
819. Studio  
820. Studio  
821. Studio  
822. Studio  
823. Studio  
824. Studio  
825. Studio  
826. Studio  
827. Studio  
828. Studio  
829. Studio  
830. Studio  
831. Studio  
832. Studio  
833. Studio  
834. Studio  
835. Studio  
836. Studio  
837. Studio  
838. Studio  
839. Studio  
840. Studio  
841. Studio  
842. Studio  
843. Studio  
844. Studio  
845. Studio  
846. Studio  
847. Studio  
848. Studio  
849. Studio  
850. Studio  
851. Studio  
852. Studio  
853. Studio  
854. Studio  
855. Studio  
856. Studio  
857. Studio  
858. Studio  
859. Studio  
860. Studio  
861. Studio  
862. Studio  
863. Studio  
864. Studio  
865. Studio  
866. Studio  
867. Studio  
868. Studio  
869. Studio  
870. Studio  
871. Studio  
872. Studio  
873. Studio  
874. Studio  
875. Studio  
876. Studio  
877. Studio  
878. Studio  
879. Studio  
880. Studio  
881. Studio  
882. Studio  
883. Studio  
884. Studio  
885. Studio  
886. Studio  
887. Studio  
888. Studio  
889. Studio  
890. Studio  
891. Studio  
892. Studio  
893. Studio  
894. Studio  
895. Studio  
896. Studio  
897. Studio  
898. Studio  
899. Studio  
900. Studio  
901. Studio  
902. Studio  
903. Studio  
904. Studio  
905. Studio  
906. Studio  
907. Studio  
908. Studio  
909. Studio  
910. Studio  
911. Studio  
912. Studio  
913. Studio  
914. Studio  
915. Studio  
916. Studio  
917. Studio  
918. Studio  
919. Studio  
920. Studio  
921. Studio  
922. Studio  
923. Studio  
924. Studio  
925. Studio  
926. Studio  
927. Studio  
928. Studio  
929. Studio  
930. Studio  
931. Studio  
932. Studio  
933. Studio  
934. Studio  
935. Studio  
936. Studio  
937. Studio  
938. Studio  
939. Studio  
940. Studio  
941. Studio  
942. Studio  
943. Studio  
944. Studio  
945. Studio  
946. Studio  
947. Studio  
948. Studio  
949. Studio  
950. Studio  
951. Studio  
952. Studio  
953. Studio  
954. Studio  
955. Studio  
956. Studio  
957. Studio  
958. Studio  
959. Studio  
960. Studio  
961. Studio  
962. Studio  
963. Studio  
964. Studio  
965. Studio  
966. Studio  
967. Studio  
968. Studio  
969. Studio  
970. Studio  
971. Studio  
972. Studio  
973. Studio  
974. Studio  
975. Studio  
976. Studio  
977. Studio  
978. Studio  
979. Studio  
980. Studio  
981. Studio  
982. Studio  
983. Studio  
984. Studio  
985. Studio  
986. Studio  
987. Studio  
988. Studio  
989. Studio  
990. Studio  
991. Studio  
992. Studio  
993. Studio  
994. Studio  
995. Studio  
996. Studio  
997. Studio  
998. Studio  
999. Studio  
1000. Studio

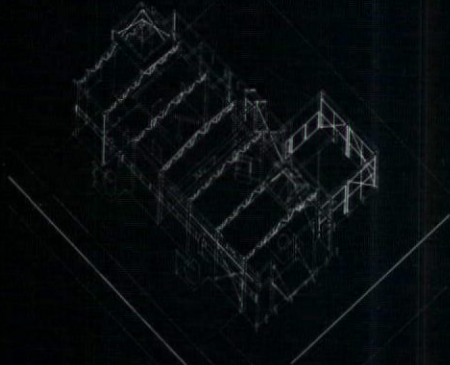
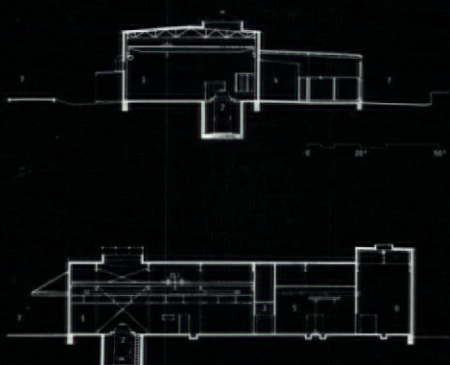


### Jury Comments

A most innovative project in the category of office environments. Spatially rich and imaginatively detailed. The various pavilions lend a delightful sense of scale and identity to what must be a wonderful workplace.

## Environmental Test Building

Architects: Richard W. Rose, AIA, Ronald Rose, AIA  
Owner: Allied Bendix Aerospace Oceanics Division  
Contractor: Ed Layton Construction Company



### Jury Comments

A building of refreshing simplicity and clarity of purpose. It does not strive for compositional effect nor overplay its technological purpose as do so many other projects. Lean in its elements, and lovingly detailed, it manages to make a simple, volumetric statement while allowing its utilitarian components to assume a poetic presence.

TIM BRADLEY AND JACK DAVEY

## Industrial