



1977 Officers and Board of Directors: (Front row, left to right) Susan Peterson, Lester Wertheimer, Thornton Abell, David Martin, Norma Sklarek, and Ralph Flewelling. (Back row) Joseph Amestoy, Michael Friedman, Peter Creamer, Donald Brackenbush and Jeffrey Skorneck. (Not shown: Robert Tyler and Bernard Zimmerman.) Photograph by Paul Goodwin.

INSTALLATION DINNER-DANCE ON JANUARY 29

Installation of the 1977 officers and directors of the Southern California Chapter/AIA will be celebrated at a dinner and dance in the spectacular new Bonaventure Hotel on Saturday evening, January 29. Invitations and RSVP cards will be mailed directly to Chapter members and guests.

The evening's festivities will also include installation of officers and executive board members of the Women's Architectural League.

The program will begin at 6:30 p.m. in the Catalina Ballroom with a reception and no-host bar. Dinner and dancing follow at 8:00 p.m., and the formal installations will take place at 9:00 p.m. Dancing to contemporary music will continue throughout the rest of the evening. Members and guests who can't attend the dinner are urged to join the party for the installation ceremonies starting at 9:00 p.m. The price per person for the evening's program is \$15.00.

A. Quincy Jones, FAIA, will serve as installing officer for the Chapter officers and directors, including David C. Martin, President; Thornton M. Abell, FAIA, Vice President; Ralph H. Flewelling, Secretary; Robert Tyler, Treasurer; Peter T. Creamer, Norma Merrick Sklarek, Lester Wertheimer and Bernard Zimmerman, Directors. (Continuing Chapter Directors include Joseph Amestoy and Donald H. Brackenbush.)

Henry Silvestri, Past President of the SCC/AIA and current AIA Regional Director from California, will serve as installing officer for WAL officers and executive board members, including Mrs. Stanley (Kathy) Brent, President; Mrs. William (Sally) Landworth, Vice President; Mrs. Charles (Jimmie) Sigsway, Recording Secretary; Mrs. Victor (Carol) Newlove, Corresponding Secretary; Mrs. Peter (Gretchen) Creamer, Treasurer; Mrs. Edgar (Anni) Szanto, Mrs. Raymond L. (Betty) Gamble, Directors; and Mrs. Miller (Jetty) Fong, Parliamentarian.

The Hotel Bonaventure, located at 5th and Figueroa in downtown Los Angeles, is the newest addition to the downtown skyline — and the SCC/AIA will be among the first groups to make use of its dramatic facilities. Look for invitations and RSVP cards in the mail.

1977 PRESIDENT ON PRIORITIES IN YEAR AHEAD

It is clear that the Southern California Chapter has a very relevant series of tasks to perform in 1977 to effectively serve the membership and the community. Rapid change is occurring in our community and in our professional practice. There is no question that we are capable of influencing that change and it is my opinion that to be effective we must interact with our membership, with legislators, and with the community in the clearest, most straightforward manner. During the past few months I have had several meetings and conversations with past presidents, and with a task force to analyze membership attitudes, and with key chairmen of several committees to determine appropriate programs for

1977. With a great deal of help we have pulled together the framework of activities for the next year.

I would like to share with you our thoughts on the planning activities for 1977:

I. STRUCTURE

We want to simplify the committee structure of the organization in an effort to get better communication between committees, chairmen and the Board of Directors. By simplifying the structure we want to develop committees that have a high priority for action, particularly in terms of the effect of that committee on the overall membership. The committees will be grouped into categories which relate to one another and as in the past, a board member will be responsible for the coordination of related committees, as well as group quarterly committee meetings. The categories of committees are in order of priority: Legislation, involving buildings and the environment; Communication; Compensation; Membership; and Energy.

There are other activities of professional practice, activities of ethics, fellowship and education that are very important to our practice, but it is my thought that the most relevant issues for 1977 are those that I have just mentioned as priorities. This is where we want to be well organized. This is where we want to be most effective. There will be a conscious effort to place an associate and a student on each of the key committees.

II. COMMUNICATION

We want to seek ways to communicate with greater numbers of our members. At each Chapter meeting before the main speaker gives his presentation, we will give the audience a brief report on Chapter activities of note. We look to the L.A. ARCHITECT to develop new techniques of covering Chapter activities that need more exposure to the membership. This year we would also like to try one or two sectional meetings — a group of small meetings involving people of a particular region in the city.

III. CCAIA

I must be frank in stating that our Chapter has had a particular frustration with the CCAIA organization. I feel we should explore why that frustration exists. How can our frustrations be alleviated? How can the CCAIA and the Southern California Chapter strive to work more effectively and therefore more harmoniously with one another?

IV. BUDGET

In the last few years, and potentially in 1977, our income is down. Speaking about the Chapter budget, we haven't necessarily lost membership as much as we have lost the income through the supplementary dues. We have less money. We also have less reserve funds. This board must end the year with a balanced budget.

I would like to conclude by saying that if you are capable, and if you are interested, we need your help. There will be issues in 1977 that will have tremendous impact on our practice. We can have an impact on these issues, and we possess opportunities to express our viewpoints to one another as to the community. Please contact us. We are striving for a structure which can best use your input.

In the February issue of the L.A. ARCHITECT we will publish the full committee structure.

David C. Martin, AIA

1977 PROGRAM HIGHLIGHTS

Last year's Program Committee, under the spirited leadership of Bernard Zimmerman, spearheaded a number of innovations in Chapter meetings in an effort to provide more meaningful programs to greater numbers of people in the Chapter and the community.

Modestly-priced receptions were favored over expensive banquets; the L.A. county Art Museum's Bing Theater was used regularly as a meeting place; representatives of allied professions and other disciplines were encouraged to take part in Chapter meetings; and, perhaps most important of all, the meetings were opened to the public. As a result, the 1976 program of Chapter meetings saw record turn-outs month after month.

Highlights included James Stirling's standing-room-only appearance last April; the transformation of the Bradbury Building into five floors of festivity for last January's installation banquet; and the appearance of Charles and Ray Eames to receive Honorary Associate Memberships before a crowd of 600 people.

The 1977 program promises to be just as exciting — and just as well-attended. Here's a preview of upcoming Chapter meetings through next December. Please mark your calendar now!

29 January (Saturday): Installation of 1977 SCC/AIA and WAL Officers-Directors, Catalina Ballroom, Bonaventure Hotel.

8 February (Tuesday): Robert Blaich, Herman Miller Vice President of Corporate Design, Bing Theater, L.A. County Art Museum.

8 March (Tuesday): "Wit in Architecture," Stanley Tigerman, FAIA.

12 April (Tuesday): Rudi Gernrich.

10 May (Tuesday): Paul Rudolph, FAIA.

14 June (Tuesday): "Architectural Responsibility and Behavior," William Bluestein, Attorney and Behaviorist.

12 July (Tuesday): Tour of MCA Building at Universal City by Skidmore, Owings & Merrill, Mark Goldstein, FAIA.

14 August (Sunday): Designer's Picnic.

13 September (Tuesday): A political event.

11 October (Tuesday): Retrospective and Exhibit on A. Quincy Jones, FAIA.

8 November (Tuesday): 1977 Honors Award Program.

6 December (Tuesday): "Eros in Architecture," Brendan Gill, New Yorker Magazine.

ARCHITECTURAL HISTORIANS' CONFERENCE

The historic Biltmore Hotel in downtown Los Angeles will host the 1977 Annual Meeting of the Society of Architectural Historians, starting February 2. A full program of seminars, colloquia and local tours will highlight the program, which is open to non-SAHA members (\$25 registration fee) and students (\$7.50).

Of particular interest to local architects are programs scheduled for Thursday morning, February 3, on "American Public Architecture in the Twentieth Century;" Thursday's afternoon session on "Twentieth Century Architecture in Southern California" (chaired by Robert W. Winter of Occidental College and featuring papers by Thomas S. Hines, Esther McCoy, and other local scholars and journalists); and the afternoon session on Friday, February 4, on "Northern California Architecture."

Local exhibitions will include "The Architecture of Charles and Henry Greene" at Hollyhock House; "Connections: The Work of Charles and Ray Eames" at UCLA's The Art Gallery; "Historic Los Angeles" at the Los Angeles Public Library in downtown Los Angeles; and "A Selection of the Drawings of Richard J. Neutra" at UCLA's School of Architecture and Urban Planning.

A number of bus tours are scheduled for Saturday and Sunday, February 5 and 6, ranging from "Period Architecture of the 20s and 30s" to "Wilshire Boulevard."

For information and pre-registration (at reduced fees), please contact Mrs. Rosann S. Berry, SAH Executive Secretary, 1700 Walnut Street, Philadelphia, Pa. 19103. Registration is also available at the door, but some programs and tours may be filled.

CALIFORNIA ARCHITECTURE EXHIBIT AT S.F. MUSEUM

To the casual observer, it has been a banner year for California architecture and for Southern California in particular, not because of all the building activity, which has been minimal, but because of the flurry of recognition both locally and nationally. It began in March when Los Angeles' KABC-TV Eyewitness News did a special on the California House from Greene and Greene's Gamble House to Richard Neutra's Silverlake home and Roland Coate's concrete-fortified Alexander House (which subsequently graced the cover of "Progressive Architecture's" August issue on houses.) This was followed by Four Days in April when James Stirling and John Hejduk met the Silver Group in a conference later memorialized in the October issue of P/A. In May there followed an exhibition of the Los Angeles 12 at Cesar Pelli's sleek Pacific Design Center. The Twelve, of course, had their conference which was also covered by the national press and appeared in the September issue of "Architectural Record." And finally in November, the "AIA Journal" reviewed the Southern California Chapter/AIA's urban design studies for a rejuvenated Hollywood. If MGM and Paramount can't save Hollywood, maybe the AIA can, at least if put forth some sound conceptual alternatives. (The above projects published nationally were first seen in L.A. ARCHITECT.)

As if all this wasn't enough to convince the doubting masses that Architecture, with a capital "A", was alive and well and living in California, on December 18 an extensive retrospective on the nation's most populous state, "A View of California Architecture: 1960-1976," opened at the San Francisco Museum of Modern Art. The idea for the show was the brainchild of the Museum's dynamic director, Henry Hopkins, who previously organized, with Walter

(Continued on "Perspective" Page)

FEEDBACK

"CCAIA affairs..."

Thank you for devoting space in your November issue to CCAIA affairs, namely the future location of CCAIA headquarters. This is an important determination which will come before the Council's 1977 board of directors and one of which California's membership should be aware.

Mr. Lyman's comments disturb me, however, as being more concerned with emotional and personal references (most of them incorrect) rather than with facts necessary for objective discussion and analysis. To my mind the matter of where CCAIA headquarters is most effectively located is far too important to allow emotion to rule.

With this in view, in accordance with a resolution by the CCAIA board of directors at its 20 August 1976 meeting, I appointed the following CCAIA Location Task Force: Joseph L. Woollett, AIA, Chairman (Orange County Chapter), William R. Hull, AIA (East Bay Chapter), Robert Tyler, AIA (Southern California Chapter), Joseph F. Thomas, FAIA (Pasadena & Foothill Chapter), M. George Lawry, AIA (Redwood Empire Chapter), David C. Boone, AIA, ex officio (East Bay Chapter), and Melton Ferris, Hon. AIA, ex officio (CCAIA executive vice-president). All members of this Task Force are also members of CCAIA's board of directors.

I am sure that the Location Task Force report to the 7 January 1977 meeting of the board will be factual as well as analytical and will provide a sound basis on which the board may proceed to any necessary decisions.

I have suggested to Mr. Lyman that it would be appropriate for him to bring any factual contribution he may wish to the attention of the Task Force.

William R. Hawley, AIA
President, CCAIA

JANUARY 1977

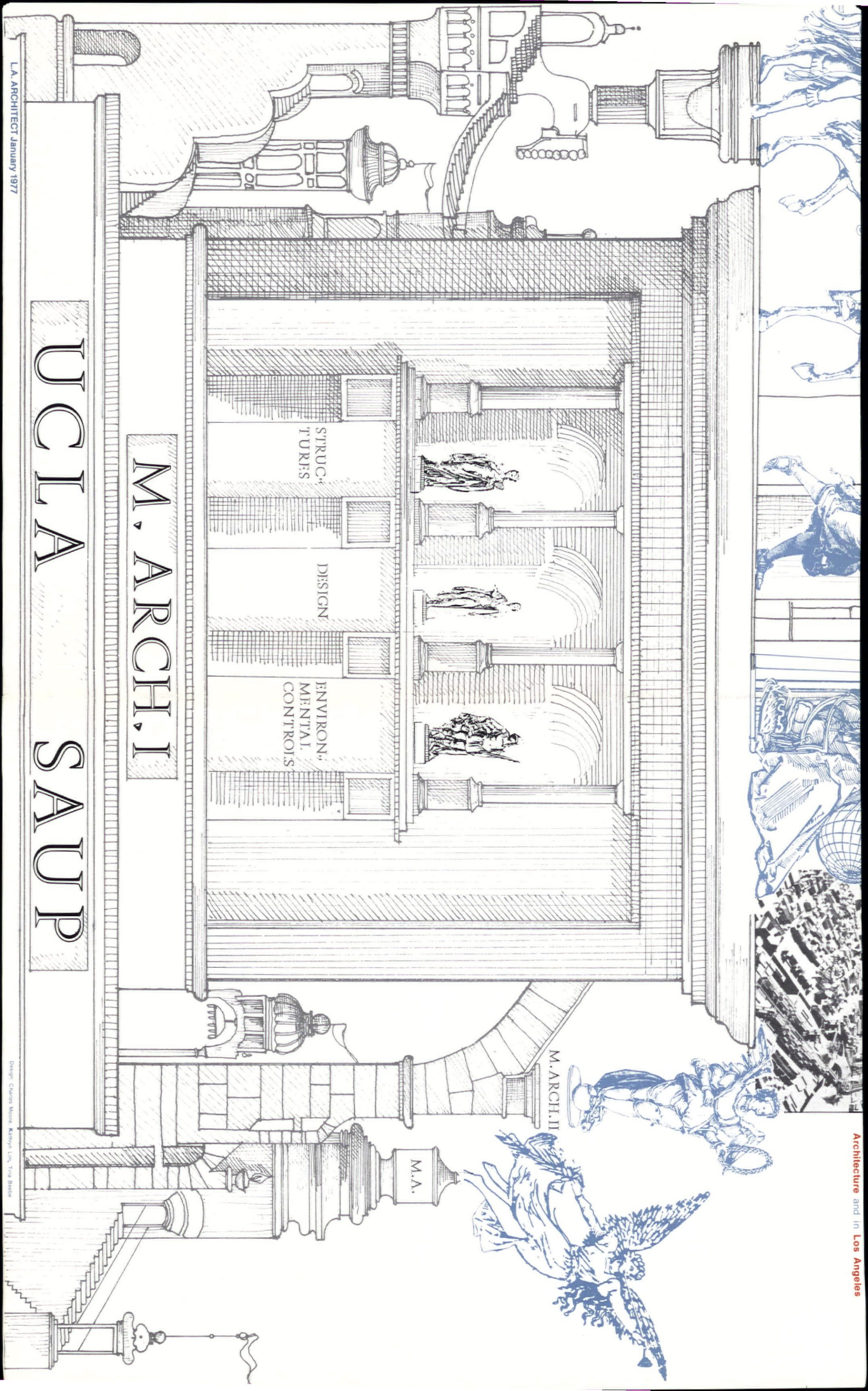
INSIDE:

UCLA School of Architecture and urban Planning.

Calendar:

January 18: Installation Dinner for ASA officers.

January 29: Installation Dinner for SCC/AIA and WAL officers and directors.



STRUCTURES

DESIGN

ENVIRON,
MENTAL,
CONTROLS

M.ARCH.II

M.A.

M, ARCH, I

UCLA SAUP

PERSPECTIVE

"...Architecture, with a capital 'A', is alive and well in California..."

(Continued from front page)

Hopps of the Smithsonian, an exhibit called "Painting and Sculpture in California: The Modern Era," which covered the work of almost two hundred artists over a seventy year period. "A View of California Architecture" is less ambitious covering only a sixteen year period, with 70 major buildings and projects by 22 California architects.

The exhibition itself was organized by David Gebhard of the University of California at Santa Barbara, and Susan King, architectural historian of the San Francisco Museum of Modern Art. The show is of significance, because it is the first major exhibit of modern architecture by an eminent institution in the state of California in as long as anyone can remember. It's true that San Francisco's M.H. de Young Museum is exhibiting "As We Were, As We Are: A Century of San Francisco Architecture," which contains some beautiful photographs of Victorian homes by Carol Olwell, and a pleasant review of early and mid-twentieth century houses organized by Sally Woodbridge, but it never attempts to address the question of "Where is modern architecture in California now?" which is the focus of the show at SFMOMA.

Of the 22 architects whose work appears, the exhibit highlights the accomplishments of Joseph Escherick, William Turnbull and Daniel Solomon from the north, Frank Gehry, Cesar Pelli, and John Lautner from the south, as well as the irrepressible, knows-no-boundaries-talents of Charles Moore. Also of note are projects by Craig Ellwood, Anthony Lumsden, Tim Vreeland, and Warren Callister. The initial impact of the sumptuous display reaffirms the place of architecture among the fine arts. Original drawings and models combined with color and black and white photographs illustrate the projects as the architects envisioned them and as they are in reality. Short of touring the entire state, it is the only way to appreciate the level of architectural design that exists today in California.

Beyond the joy of seeing fine work displayed well in the halls of a major museum, one searches in vain for an underlying theme, a point of view or conceptual approach which unifies the work, but it cannot be found. Perhaps this is how it should be. There is no style that we need adhere to. The post-modernist movement as described by Robert Stern rejects "the highly abstract architecture of orthodox modernism". The Gray school of architecture, exemplified by the work of Charles Moore and William Turnbull, is defined by Robert Stern as seeking, "to move toward an acceptance of diversity; it prefers hybrids to pure forms; it encourages multiple and simultaneous readings in its effort to heighten expressive content. The layering of space characteristic of much 'gray' architecture finds its complement in the overlay of cultural and art-historical references." This awareness of historical context and the "self-conscious use of historic imagery" is what Gebhard describes as the fundamental philosophy unifying the work he selected for exhibition. This concept is clearly valid in much of the work from Northern California. The wooded shed roofs of the Sea Ranch condominiums and houses by Moore and Turnbull (MLTW) and later Escherick Homsey Dodge and Davis evoke images of an earlier California, when redwood was plentiful and barns were hand hewn from raw timber. These skillful interpretations of the past have inspired a nation of Sea Ranch knock-offs, without the spatial surprise, wit or charm of the original.

In the south, Charles Moore and the UCLA Urban Innovations Group have continued to probe the potential of this eclectic approach in the Burns House, the Shelton House and the Selby Avenue Condominiums. Moore describes his designs as "architecture with a memory", deriving its esthetic inspiration from the indigenous architecture of the surrounding area, and making overt connections with an earlier California style.

Thomas R. Vreeland's Santa Barbara Museum addition attempts a more creative reinterpretation of the past than Langdon & Wilson's theatrical, stage-set reproduction of the Villa del Papiri at Herculaneum, for the J. Paul Getty Museum in Malibu. But is this reinterpreting the past what 1976 is all about? I think not. This is only half the story.

The other half embraces the technology, and reality of the later half of the twentieth century exploring new formal concepts and investigating alternate methods of enclosing and shaping space. This group Susan King has invested with the label: "New Ideas." It includes the smooth, reflective surfaces prevalent among the buildings by Cesar Pelli, and the extruded, membrane enclosed designs of Anthony Lumsden, both of whom came west to Daniel, Mann, Johnson, & Mendenhall from the office of the late Eero Saarinen and then Roche and Dinkerloo, in 1964. Pelli joined Gruen Associates in 1968, while Lumsden has remained with DMJM. Also prominent among Ms. King's "New Ideas" people are the unique designs of John Lautner and the continuing innovative work of Frank Gehry and Associates.

The skin enclosures pioneered by both Lumsden and Pelli offer some challenging and imaginative avenues of exploration as demonstrated in Pelli's streamlined, blue Pacific Design Center and carefully detailed Wells Fargo Bank in Oakland. The rolling surfaces of Lumsden's Beverly Hills Hotel and the Manufacturers Bank at Roxbury Plaza are further innovative investigations into a non-gravitational enclosure which can reflect changes in scale, in site conditions and in program requirements.

Frank Gehry's long association

with the modern movement in art has been incorporated into his approach to design. Just as Rauschenberg will invest new meaning in mundane objects such as old blueprint paper, a stuffed bird, or a broken umbrella, by the special context he creates for them, so Gehry explores new uses for common materials. Notable examples of this include his laminated, corrugated cardboard furniture, his use of giant sonotubes in the Hollywood Bowl remodeling, his corrugated aluminum enclosure in the oblique, quadrangular volume that is Ron Davis' award-winning studio, and in his recent studies for chain-link fences as a contemporary means of enclosure.

Along with Bruce Goff, John Lautner remains one of the few living practitioners who worked closely with Frank Lloyd Wright and has since developed his own extraordinary vocabulary of sculptural, architectural space. His residence for Bob Hope, reminiscent of Saarinen's TWA terminal, the Elrod residence, and the Stevens residence are all spatial studies that expand the potential palette of every architect.

As a total entity, "A View of California Architecture: 1960-1976" is a joy to behold. Everyone who is remotely interested in the state of architectural design today has another terrific reason to visit San Francisco between December 18 and February 6. On January 19,

Susan King and David Gebhard, co-curators of the exhibit, will debate: "Historicism in Modern Architecture: Do We Need It?" On January 22, a symposium on "The State and Future of Architecture in California" will be held including participants whose work is on exhibition. A catalogue of the exhibit is available with essays by both Mr. Gebhard and Ms. King which raise some polemical issues regarding the seriousness, or lack thereof, in today's California architecture.

If there are any trends to be discovered by viewing the exhibit, it is probably that Northern California architects are better at detailing wood buildings and their southern counterparts are better at glass and metal, while concrete goes both ways. There is probably also greater concern for the past in San Francisco and more interest in the future in Los Angeles.

One always wonders about choices for a show like this and perhaps some of your favorites didn't make it. I for one am puzzled how Pereira's triangular eyesore could be included and the consistent high quality of the San Francisco office of Skidmore, Owings and Merrill is absent. The

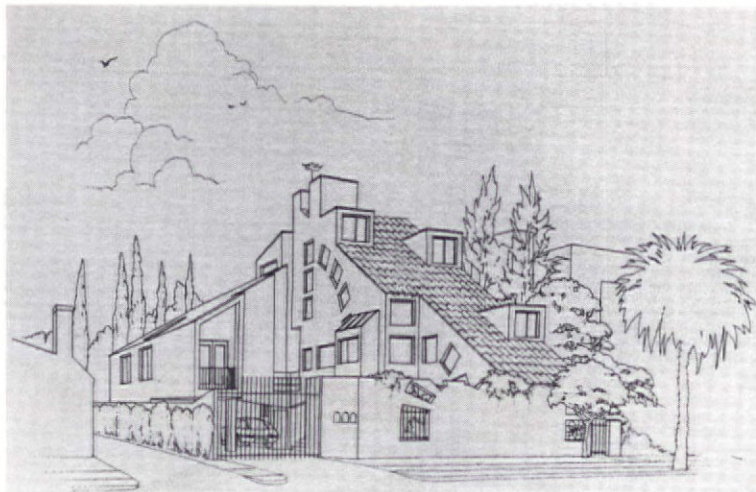
competition-winning work of Elbasani, Logan and Severin or Backen, Arrigoni and Ross (no relation) of San Francisco, or the exquisitely detailed wood and glass houses of Ray Kappe in Los Angeles, clearly represent work on a par with most of the projects included in the exhibition. It is always easy to second-guess curators, but each of us has our own preferences and with the limited space available, the show is unquestionably a success. As for the excellent work which isn't included, it should be a part of the next major architectural exhibit on the West Coast, which, with a little luck, might be held in Los Angeles.

Michael Franklin Ross, AIA

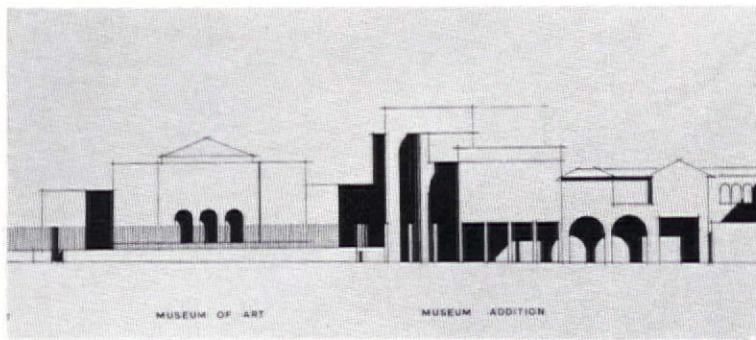
Photography Credits: (1) Saltzman residence by Daniel Solomon (Joshua Freilwald photograph); (2) Selby Avenue Condominium by Charles Moore, Urban Innovations Group (Ink Drawing by William Hersey); (3) Santa Barbara Museum Addition by Thomas R. Vreeland, Jr., Kamnitzer, Cotton & Vreeland; (4) Floriculture Pavilion by Warren Callister, Callister, Payne & Bischoff (Philip Molten photograph); (5) Pacific Design Center by Cesar Pelli, Gruen Associates (Marvin Rand photograph); (6) Sepulveda Water Reclamation Plant by Anthony J. Lumsden, Daniel, Mann, Johnson & Mendenhall; (7) Ron Davis Studio-Residence by Frank O. Gehry & Associates; (8) Bob Hope Residence (First Version Before Fire) by John Lautner.



1



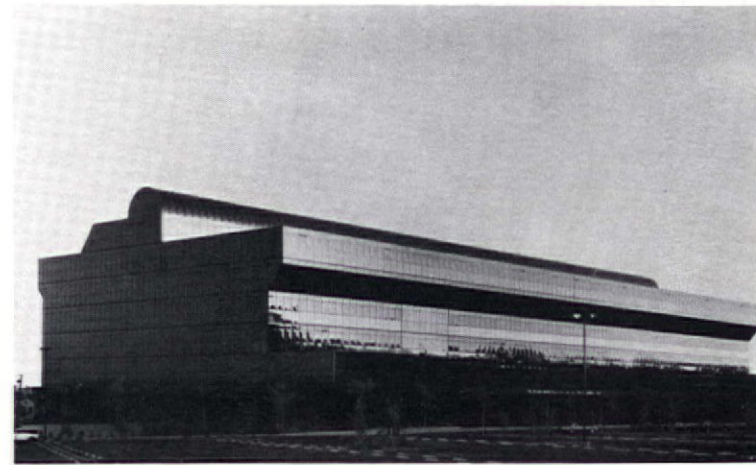
2



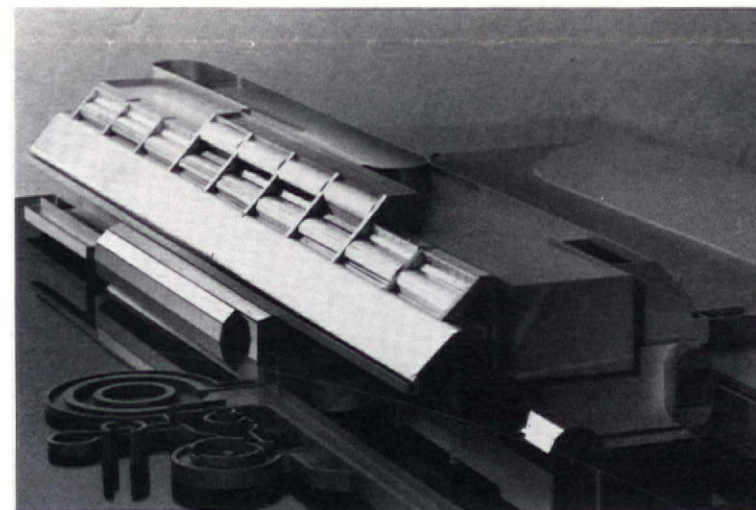
3



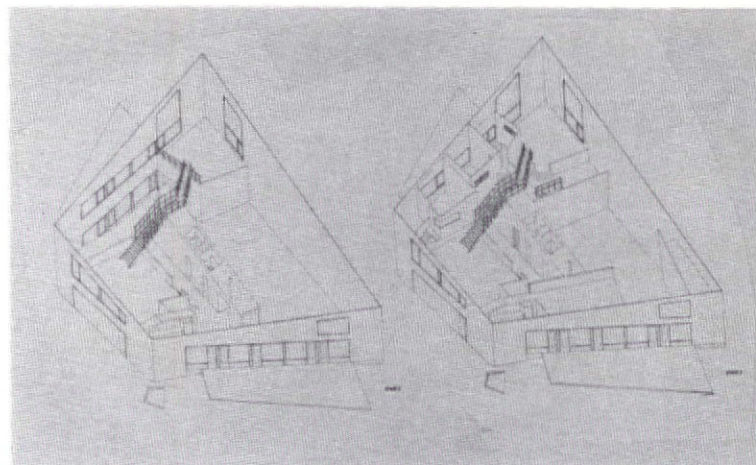
4



5



6



7



8

SAUP UCLA

The **School of Architecture and Urban Planning** at the **University of California**, Los Angeles, mounts a series of programs designed to advance the theory and (especially) the practice of Architecture. The basic professional program is the

Master of Architecture (M.Arch. I) which admits to selected students each year with a Bachelors' degree in any field. In three years, on a firm (and required) base of

Design, Structures and Environmental Controls, it allows a series of elective possibilities buttressed by the faculty and students of the

M.Arch. II program, in which advanced students with a professional degree (and generally some experience) in architecture, work in a two-year program of Urban Design and independent research. The

M.A. program is designed to promote research in architecture based on the social sciences and computer technology, and adds strength to the M.Arch. I and M.Arch. II programs.

Required studios in

Architectural Design occupy the first five of the nine quarters of the M.Arch. I program. They introduce the student, successively, to design in response to the needs of the human body and mind, design in the fabric of the city, design in the landscape, building design, and more building design. These studios depend heavily in related courses in building **Structures**, in natural and artificial **Environmental Controls**, and rely on a developing sense of history.

Interests developed in these studios and introduced by a distinguished list of **Visiting Critics** (see above) can be extended in a series of elective studios during the next quarters. Examples of recent special studios include a dazzling marathon of (mostly Italian) Rationalists marshalled by O.M. Ungers, the design of an extension to the Santa Barbara Museum of Art with Tim Vreeland, the architect for the extension.

A and ateliers to develop three exhibits of American suburban housing alternatives for the 1976 Venice Biennale (three of the eleven American architects invited to the Biennale, Cesar Pelli, Craig Hodgetts and Charles Moore, were on the UCLA faculty, so the project became elective studios). Moore's studio project, For a Suburban Alternative: the Mobile Home, is shown.

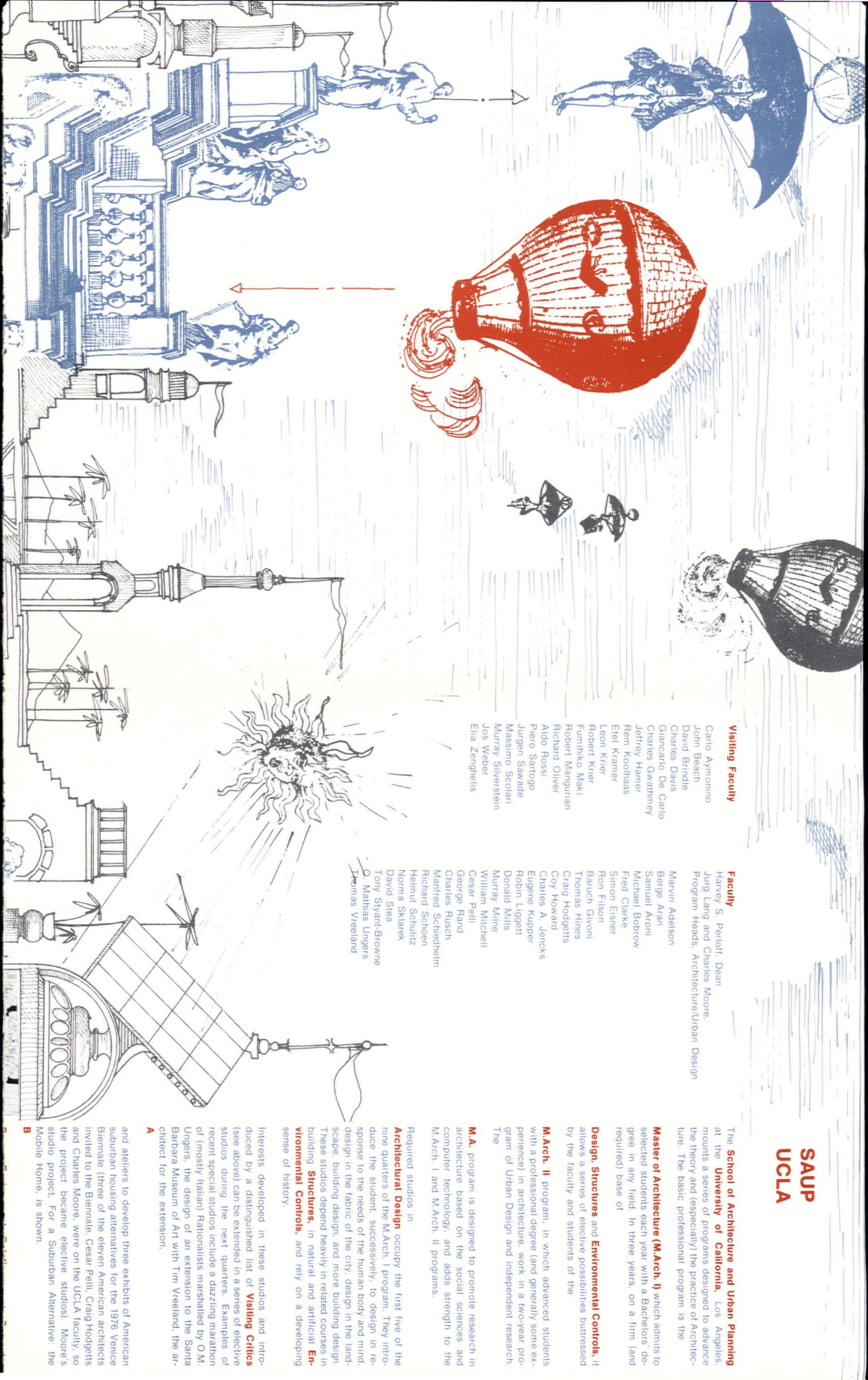
Visiting Faculty

Carlo Aymonino
John Beach
David Brindle
Charles Davis
Giancarlo De Carlo
Charles Gwathmey
Jeffrey Hamer
Rem Koolhaas
Etel Kramer
Leon Krier
Robert Krier
Fumihiko Maki
Robert Mangurian
Richard Oliver
Aldo Rossi
Piero Sartogo
Jurgen Sawade
Massimo Scolari
Murray Silverstein
Jos Weber
Elia Zenghelis

Faculty

Harvey S. Perloff, Dean
Jurg Lang and Charles Moore,
Program Heads, Architecture/Urban Design

Marvin Adelson
Berge Aran
Samuel Aroni
Michael Bobrow
Fred Clarke
Simon Eisner
Ron Filson
Baruch Givoni
Thomas Hines
Craig Hodgetts
Coy Howard
Charles A. Jencks
Eugene Kupper
Robin Liggett
Donald Mills
Murray Milne
William Mitchell
Cesar Pelli
George Rand
Charles Rusch
Manfred Schiedhelm
Richard Schoen
Helmut Schultz
Norma Sklarek
David Stea
Tony Syant-Browne
O. Mathias Ungers
Thomas Vreeland



Person-Environment Relations and **Computer Technology** provide courses and research projects which enrich all the programs. The docents on our educational edifice are noting George Rand's study of a child's perception of space

C and Robin Liggett and Bill Jepson's computer-generated topographical map of Yosemite Park.

D The cultural advantages and special attributes of life in Los Angeles (copied for so long by the rest of the world) as well as the dazzling variety of student backgrounds, encourage a rich mix of topics for the

Thesis which fills the last two quarters of the nine in the M.Arch. I program. Pamela Palmer's 1975 thesis on Urban Redevelopment is sited in Little Tokyo, in downtown Los Angeles.

E and Tommy Wong's thesis, also in 1975, is a recreational facility for Canton, China.

F Fred Fisher's thesis project in 1975 was a visiting Scholars' Center at Macchu Pichu, which was the precursor to his 1977 Progressive Architecture Design Award.

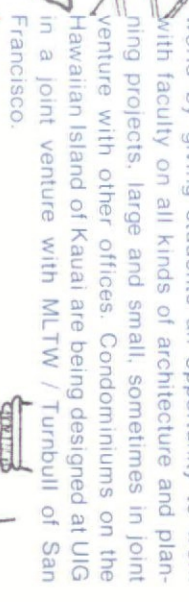
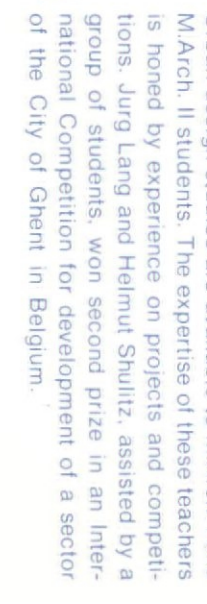
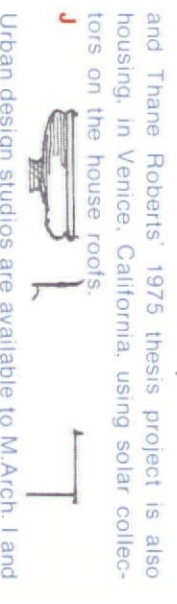
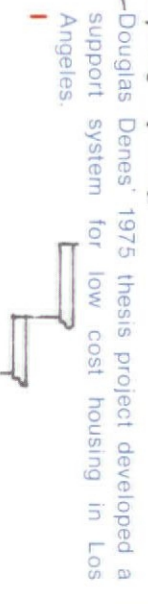
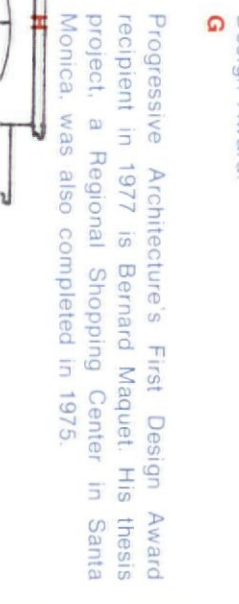
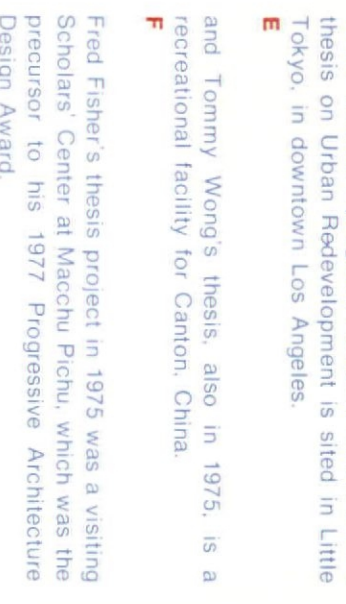
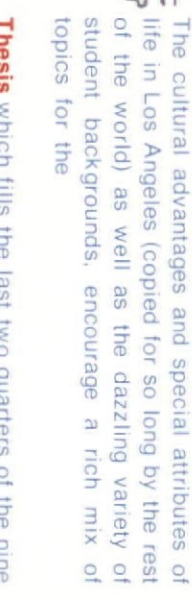
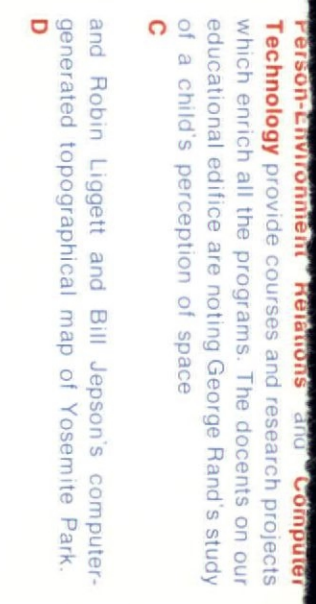
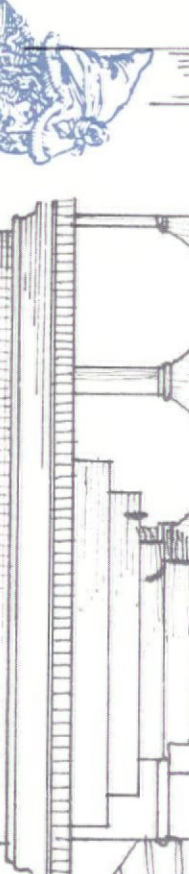
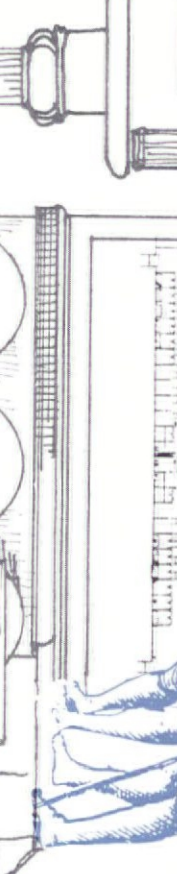
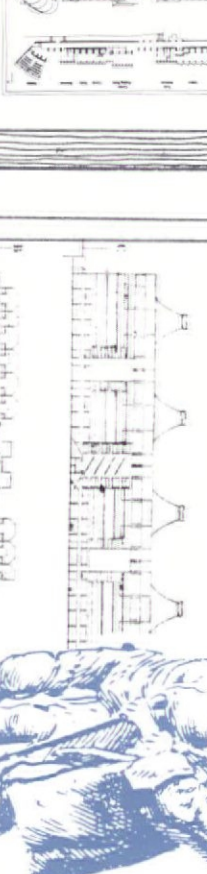
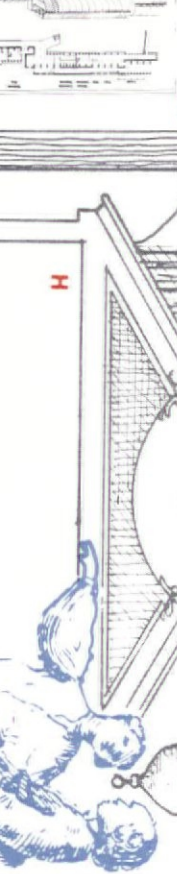
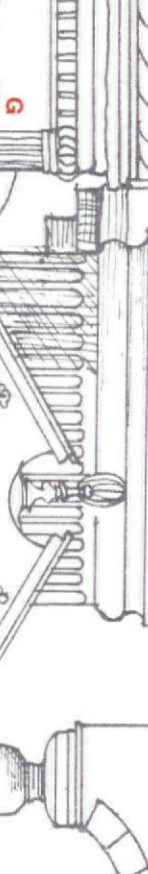
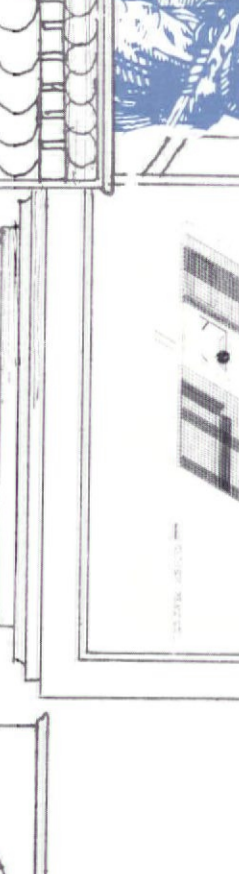
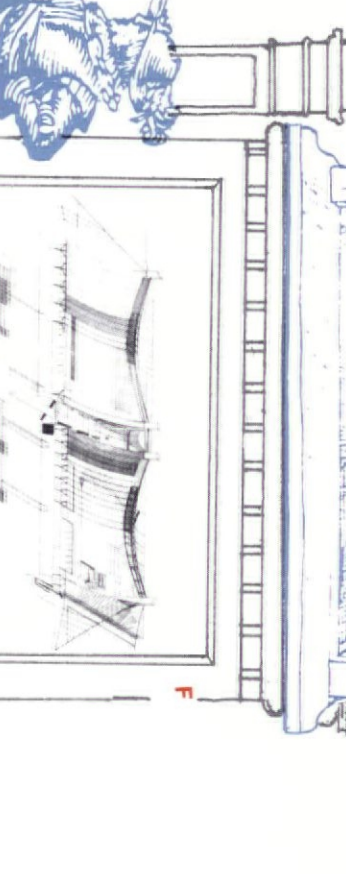
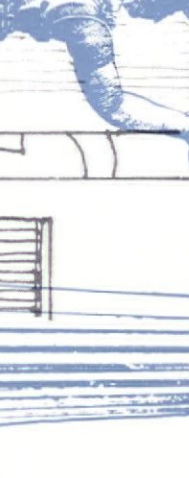
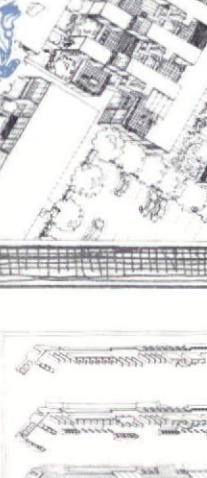
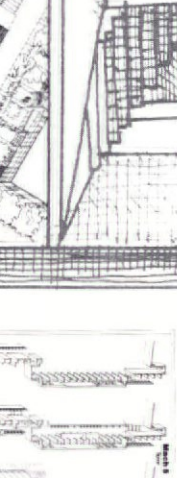
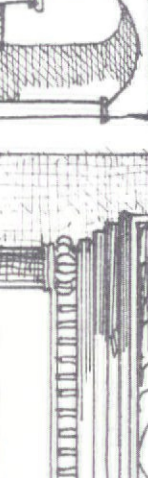
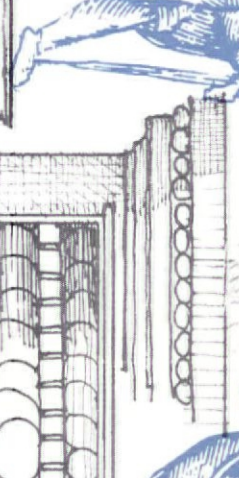
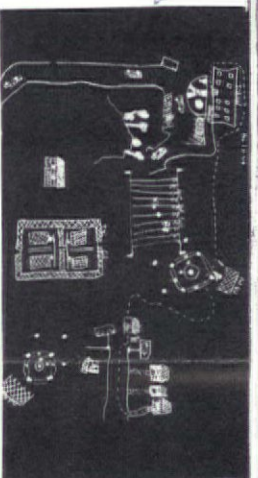
G Progressive Architecture's First Design Award recipient in 1977 is Bernard Maquet. His thesis project, a Regional Shopping Center in Santa Monica, was also completed in 1975.

H Douglas Denes' 1975 thesis project developed a support system for low cost housing in Los Angeles.

I and Thane Roberts' 1975 thesis project is also housing, in Venice, California, using solar collectors on the house roofs.

J Urban design studios are available to M.Arch. I and M.Arch. II students. The expertise of these teachers is honed by experience on projects and competitions. Jurg Lang and Helmut Shultz, assisted by a group of students, won second prize in an international Competition for development of a sector of the City of Ghent in Belgium.

K The school's practice arm, the Urban Innovations Group also strengthens connections with the real world by giving students an opportunity to work with faculty on all kinds of architecture and planning projects, large and small, sometimes in joint venture with other offices. Condominiums on the Hawaiian Island of Kauai are being designed at UIG in a joint venture with MLTW / Turnbull of San Francisco.



CHAPTER NEWS AND NOTES

The 2,126th Meeting of the SCC/AIA Board of Directors: On September 14, 1976, officers, directors, and guests met to discuss reports by the Secretary, Treasurer, Womens Architectural League, Programs Committee, Nominations Committee, L.A. ARCHITECT, Membership Committee, Cultural Heritage Committee, and Housing Committee.



VALE CAESAR

The 2,127th Meeting of the SCC/AIA Board of Directors: On October 20, 1976, officers, directors and guests met to discuss reports by the Secretary, Treasurer, Priorities Task Force, Women's Architectural League, Programs Committee, Membership Committee, Cultural Heritage Committee, and Student Associates. Topics under consideration included the CCAIA Convention, the CCAIA Retirement Plan, and a politically-oriented Chapter meeting.

Expert Speedy Typist

*Specifications, etc.
IBM Selectric II
choice of Type Face
Pick-up & Deliver*

Call Raymond—461-1660

BARNWOOD

Rocky Mountain & Midwestern barnwood. Good variety, reasonable price. Contact Steve Bloxham, Box 2821, Scottsdale, Az. 85252. (602) 968-0440

Field Inspection
Document Coordination
Contract Administration
30 Years Experience.

Hourly Rate
GEORGE LAMB
(213) 792-1800

1976 SCC/AIA President Henry Silvestri has been named to the Board of Directors of the Institute as the **Regional Director from California**, and also to the Board of the CCAIA.

A Conference and Exhibition of the L.A. 12 architects will be held on February 12 at Cal Poly Pomona's University Union. Participants will include the twelve member-architects as well as visiting dignitaries, students, and other members of the architectural community. The event is organized by the students of Cal Poly Pomona's Department of Architecture, School of Environmental Design, and sponsored by the Architecture Students Forum (ASC/AIA). For further information, call (714) 598-4182.



Mrs. Stanley (Kathy) Brent has been elected President of the Southern California Chapter Women's League, auxiliary to the SCC/AIA. Mrs. Brent has been a member of WAL for three years, serving as Membership Chairman and Vice President. Other officers include **Mrs. William (Sally) Landworth**, Vice President; **Mrs. Charles (Jimmie) Sigsway**, Recording Secretary; **Mrs. Victor (Carol) Newlove**, Corresponding Secretary; and **Mrs. Peter (Gretchen) Creamer**, Treasurer. Also serving on the Executive Board are the immediate past president, **Mrs. Edgar (Anni) Szanto**, Director; **Mrs. Raymond L. (Betty) Gamble**, Director; and **Mrs. Miller (Jetty) Fong**, Parliamentarian. Committee Chairmen are **Mrs. Ralph (Martha) Bowerman**, Education; **Mrs. Marcus (Batie) Swed**, historian; **Mrs. David (Diane) Duplanty**, Membership; **Mrs. Donald (Janet) Axon**, Public Relations; **Mrs. Edward (Dodie) Skibitzke**, Social; **Mrs. Paul (Nancy) Hoag**, Ways and Means-Operations; **Mrs. Cyril R. (Mary Louise) Shnier**, Program; **Mrs. Sheldon (Linda) Brown**, Project-L.A. Beautiful; **Mrs. Roger L. (Ruth) Bown**, Project-Architectural Scholarships; and **Mrs. Richard (Maureen) Dodson**, Hospitality.

The Education Services Committee of the **Construction Specifications Institute** is sponsoring two courses starting in January — **Contract Administration** by R. Redmond Coghlan, FCSI, and **Advanced Specifications Writing** by Jerome I. Orland, CSI. The classes will cost \$45.00 and run for seven weeks at the Masonry Institute. For information contact the CSI office at 481-1877 or **David A. Deyell**, AIA, CSI, at 763-7460.



At their annual business meeting in November, the **Southern California Chapter/Architectural Secretaries Association, Inc.** announced the results of the election of officers for the term beginning February 1, 1977. **Beverly Bolin**, Administrative Assistant for Harold Williams Associates, Architects and Urban Planners, will become President of the chapter. Her board will include: **Carol Cushing**, Personnel Manager/Administrative Assistant at Adrian Wilson Associates/A Division of Howard Needles Tammen & Bergendoff (HNTB), as 1st Vice President in charge of programs; **Joann Craig**, Technical Writer for Charles Luckman Associates, will be 2nd Vice President in charge of membership; **Barbara Marshall**, Office Manager for Lunden & Johnson, Architects, will be Recording Secretary; Corresponding Secretary will be **Mary Alice Long**, Secretary at Daniel, Mann, Johnson & Mendenhall; with **Sandy Nelson**, who is Billing Supervisor at Charles Kober Associates, becoming Treasurer. Directors will be past presidents: **Lily Nakao** (Charles Kober Associates), currently serving as of November 1st; **Helen R. Brewer** (The California State University & Colleges); **Vicki Hutton** (Inslee, Senefeld & Associates); and **Thelma Imschweller** (Adrian Wilson Associates/A Div. of HNTB). National ASA Treasurer, **Ruth P. Chilton** (Maurice H. Fleishman, Architect, AIA) will also serve on the Board of Directors. Installation will be on Tuesday, January 18th at the Velvet Turtle Restaurant in Chinatown. No-host cocktails will precede the 8 p.m. dinner and program. Installing officer will be **Robert McCroskery**, Office Manager for Harold Williams Associates. The guest speaker will be **Charles Kober**, AIA, President and Director of Charles Kober Associates. Mr. Kober has been chief executive of his firm since 1959. Advance reservations at \$8 per person are requested by outgoing president of the chapter, **Lily Nakao** of CKA at 2706 Wilshire Blvd., Los Angeles, 90057/386-7534.

California State University, Pomona announced a vacancy in the position of **Dean of the School of Environmental Design**. The Dean is the harmonizing force and projects the philosophical leadership in the School for the three disciplines of Architecture, Landscape Architecture, and Urban Planning. The School offers both bachelor's and masters's degrees in these disciplines. Candidates must have a professional master's degree and possess teaching and professional experience in one of the disciplines, preferably in more than one. Three years responsible administrative experience is also required. Full membership in at least one professional society is desirable. Send resume and application or letter of intent, in confidence, before January 31, 1977, to **Dr. Kenneth H. Anderson**, University Dean for Academic Affairs, California State Polytechnic University, Pomona,

3801 W. Temple Ave., Pomona, CA 91768, attention: **Charlotte Bray**. An equal opportunity/affirmative action employer.

PC '77 (Professional Consultants '77) is a new program of the **Producers' Council of Southern California**. A preview of this program was presented to incoming presidents of AIA Chapters last November at the Ambassador Hotel in Los Angeles. A description of PC '77 — what it is, how it works, etc. — is contained in a six-page booklet that's being mailed directly to Chapter members.

"Graphic Techniques in Landscape Architecture" is one of several courses now being offered by **Cal Poly Pomona's Continuing Education Program**. Call (714) 598-4391 for further information.

MAKE IT LAST MAKE IT MASONRY DIGNITY, ENDURANCE and ECONOMY

Masonry walls reduce sound transmission and conserve energy

FOR INFORMATION and
TECHNICAL ASSISTANCE CALL
MASONRY INSTITUTE OF AMERICA
2550 BEVERLY BLVD.
LOS ANGELES, CALIF. 90057
Phone (213) 388-0472

BOOKS on ARCHITECTURE • DESIGN • PLANNING
new • out-of-print • imported / hardcover & paperback
extensive stock / special values at reduced prices



WE ALSO BUY BOOKS

Hennessey & Ingalls, Inc.

Art and Architecture Bookstore
11833 Wilshire Boulevard
Los Angeles 90025 473-0380

Drafting Supplies
Offset Printing
Xerography
Delivery
Blueprinting
Architectural Photography



**UNIVERSAL
REPRODUCTIONS
INCORPORATED**
CORPORATE OFFICE (213) 558-8480
5915 Blackwelder St., Culver City, CA 90230

Precision Photography
Photo Reproductions
Drawing Restoration

"TOTAL CONCEPT REPRODUCTION SYSTEMS"

Seven Locations to Serve You

OFFSET PRINTING
1805 BLACKWELDER ST.
CULVER CITY, CALIF. 90230
(213) 558-8480

PHOTO LAB
5915 BLACKWELDER ST.
CULVER CITY, CALIF. 90230
(213) 558-8480

IRVINE
11941 156TH PARK CIRCLE
IRVINE, CALIF. 92703
(714) 919-0592

WEST L.A.
1606 CORNER STREET
LOS ANGELES, CALIF. 90026
(213) 477-5023

ORANGE
180 NORTH GLASSELL
ORANGE, CALIFORNIA 92668
(714) 997-2171

ALHAMBRA
17 NORTH FIRST STREET
ALHAMBRA, CALIF. 91801
(213) 283-0674

VALLEY
16000 VENTURA BLVD
SHERMAN OAKS, CALIF. 91403
(213) 789-8141

From its inception, URI has been service oriented in graphic arts reproduction, endeavoring to provide the very best products available to our clients.

graphic consultants
to the architect and engineer
overlay drafting systems *
diaz * xerography *
vacuum frame * photography
graphic design * offset

**ford
graphics**

downtown:
1225 west ninth street, los angeles, california 90015 627-5667
mid-wilshire:
735 south la brea, los angeles, california 90036 938-3739
westwood:
10980 wilshire boulevard, los angeles, california 90024 477-6501

L.A. ARCHITECT January 1977

L.A. ARCHITECT

Published monthly by the
Southern California Chapter
American Institute of Architects
Suite 510, Bradbury Building,
304 South Broadway,
Los Angeles, Ca. 90013
(213) 624-6561

One-year mail subscriptions: \$6.00
Advertising rates are available from the
Chapter office.

The opinions stated are those of the
authors only, and do not reflect the
official position of the AIA or the
Southern California Chapter, except
where indicated.

David C. Martin, AIA
President
Thornton M. Abell, FAIA
Vice President
Ralph H. Flewelling, AIA
Secretary
Robert Tyler, AIA
Treasurer

Directors:
Joseph Amestoy, AIA
Donald H. Brackenbush, AIA
Peter T. Creamer, AIA
Norma Merrick Sklarek, AIA
Lester Wertheimer, AIA
Bernard Zimmerman, AIA

Mrs. Stanley M. (Kathy) Brent
President, Women's Architectural
League

Thomas R. Vreeland, Jr., AIA
Chairman of the Editorial Board
Kenneth Dillon, AIA
Treasurer
Lester Wertheimer, AIA
Graphic Designer

Editorial Board:
Peggy Cochrane Bowman, AIA
Anne Luise Buerger
Thomas S. Hines, S.A.H.
Frederic P. Lyman, AIA
Charles W. Moore, FAIA
Michael F. Ross, AIA

Jonathan Kirsch
Editor
Gilbert L. Smith
Advertising Director

1/2 SIZE AND PHOTOGRAPHIC SYSTEMS TIME AND LABOR SAVING GRAPHICS PROGRAMS QUALITY BLUEPRINT COMPANY

Architectural Graphic Consultants

XEROGRAPHIC • DIAZO • PHOTOGRAPHIC • LITHOGRAPHIC

900 SO. ROBERTSON BLVD., LOS ANGELES, CA. 90035
657-0040

2100 PONTIUS AVE., LOS ANGELES, CA. 90025
473-0987

1429 FIFTH STREET, SANTA MONICA 90401
395-2995

LUMBER ASSOCIATION OF SOUTHERN CALIFORNIA

We have available to you:

Design information
Technical assistance
Literature including

Timber Construction Manual
Grading rule books
Western Wood Use Book
National Design Specifications
Span tables

WOOD — The only renewable natural resource

If we can be of help to you, call or come by

1915 Beverly Blvd. Ste. 202 Los Angeles, Ca. 90057
213-483-6450

