

LOUISIANA ARCHITECT

SEPTEMBER

1965

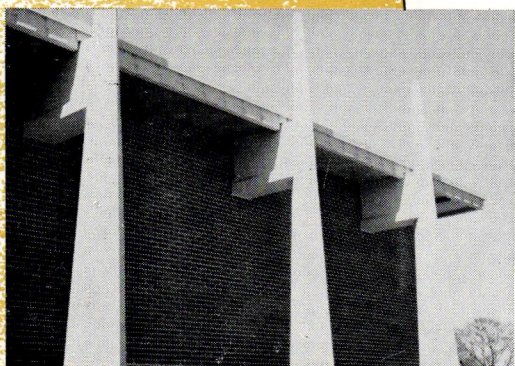
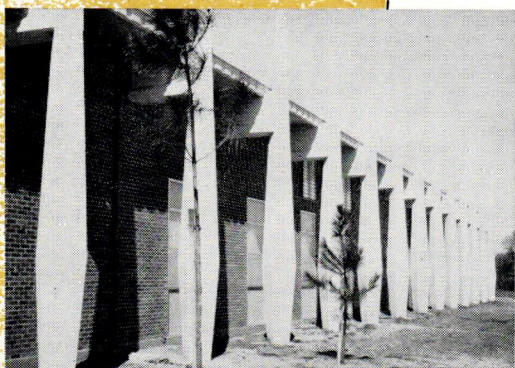
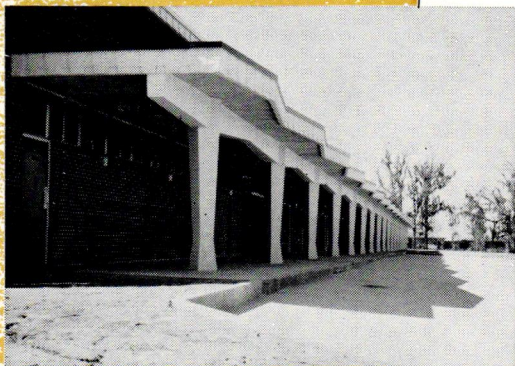
AMERICAN INSTITUTE
OF
ARCHITECTS

SEP 29 1965

LIBRARY



OFFICIAL PUBLICATION OF THE LOUISIANA ARCHITECTS ASSOCIATION



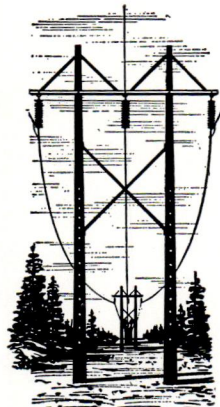
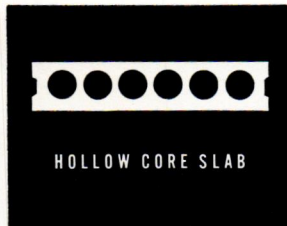
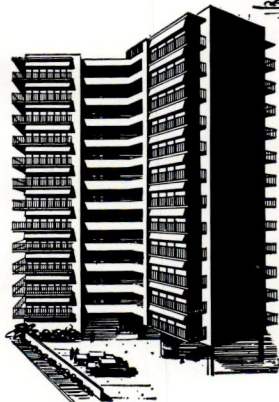
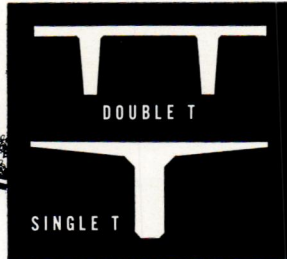
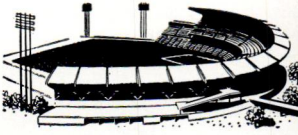
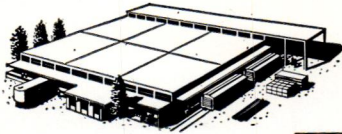
Sharon Hills Elementary School,
Baton Rouge, La. OWNER: East
Baton Rouge Parish School Board.
ARCHITECTS: LeBlanc & Deen.
CONTRACTOR: Milton J. Wo-
mack. PRE-STRESSED CONCRETE
by Louisiana Concrete Products,
Inc. BASE BID, \$493,000.

WHEN THE SCHOOL BELL RANG . . .

the workmen had long since departed from the scene. The job was done. Five separate buildings, including 18 classrooms, an administrative wing and a "cafetorium", supported by gracefully tapering pre-stressed concrete pillars and beams from Louisiana Concrete Products, Inc., stood as a tribute to architectural design and engineering. Complete date had been set at June, 1964. When the school bell rang, it was September, 1963! Louisiana Concrete is proud of the part it played in this exceptional time and money saving effort.

LOUISIANA CONCRETE PRODUCTS
INC.

4747 Choctaw Drive Baton Rouge, Louisiana
5401 France Road New Orleans, Louisiana
2101 Common St. Lake Charles, Louisiana



Warehouses to skyscrapers,
bridges to water tanks...

TODAY, IT'S **PRESTRESSED CONCRETE**

More and more architects and builders are choosing prestressed concrete for structures of every size and type. Prestressed concrete makes efficient use of two quality materials—high strength concrete and high tensile strength steel. This combination provides new opportunity for bold and imaginative design as well as money savings.

Prestressing makes possible long spans with beams and girders of shallow depth. Precasting of prestressed elements and site work can proceed together to shorten building schedules. Erection of the prestressed members is rapid. Prestressed designs give important weight reduction in large structures.

Upkeep costs are low. Concrete need not be painted. And in many cases, concrete's durability and fire resistance earn lower insurance rates.

The many advantages of versatile prestressed concrete provide structures that combine architectural appeal and construction efficiency.

PORTLAND CEMENT ASSOCIATION

611 Gravier Street, New Orleans, Louisiana 70130

A national organization to improve and extend the uses of concrete

TYPICAL PRESTRESSED CONCRETE PRODUCTS ... AND HOW THEY ARE USED

- | | |
|----------------------|------------------------|
| | Warehouses |
| | Industrial plants |
| | Bridges and overpasses |
| | Schools |
| | Gymnasiums |
| | Auditoriums |
| | Public buildings |
| | Shopping centers |
| | Office buildings |
| | Terminals |
| | Storage tanks |
| | Stadiums |
| | Railroad ties |
| | Apartments |
| | Transmission poles |
| Girders | |
| Beams | |
| Columns | |
| Roof and floor units | |
| Slabs | |
| Wall panels | |
| Joists | |
| Piling | |

LOUISIANA ARCHITECT

OFFICIAL JOURNAL OF THE LOUISIANA ARCHITECTS ASSN.

Vol. IV

No. 11

THE LOUISIANA ARCHITECT, Official Journal of the Louisiana Architects Association of the American Institute of Architects, is owned by the Louisiana Architects Association, not for profit, and is published monthly, Suite 200, Capitol House Hotel, Baton Rouge, La., telephone 348-4331. Editorial contributions are welcomed but publication cannot be guaranteed. Opinions expressed by contributors are not necessarily those of the Editor or the Louisiana Architects Association. Editorial material may be freely reprinted by other official AIA publications, provided full credit is given to the author and to the LOUISIANA ARCHITECT for prior use.

... Advertisements of products, materials and services adaptable for use in Louisiana are welcome, but mention of names or use of illustrations of such materials and products in either editorial or advertising columns does not constitute endorsement by the Louisiana Architects Association. Advertising material must conform to standards of this publication, and the right is reserved to reject such material because of arrangement, copy, or illustrations.

Printed by Franklin Press, Inc.

Editorial Advisors—W. J. Evans, W. R. Brockway, John L. Webb

Editor—Myron Tassin

Publisher—Louisiana Architects Association

Consulting Art Director — John H. Schaeffer.

LAA OFFICERS AND BOARD

David L. Perkins, President • Clifton C. Lasseigne, Vice President • Robert E. Middleton, Vice President • G. Ross Murrell, Secretary-Treasurer — Directors: Paul B. Ritter, Max J. Heinberg, Sam Hamilton, Hugh G. Parker, Jr., Harding Flair, Frank N. Brocato, Sidney J. Folsie, Jr., P. Murff O'Neal, William R. Brockway, George M. Leake, Milton H. Finger, Jr., James H. Gibert, Ernest E. Verges, Murvan M. Maxwell, Immediate Past President • • Myron Tassin, Executive Director

Civic Responsibility

Before the next issue of *LOUISIANA ARCHITECT*, United Community Campaigns will be kicked off in major cities throughout the State. As usual, architects will be solicited along with other professionals. This year, however, we hope that the awareness of civic responsibility being expressed by architects lately will prevail in the chapter cities where it has gone lacking in the past.

The sagacity and economy of giving once for many needs has been established and accepted throughout America. It would be a waste of time and space to expound on these points here. However, a letter from the joint chairmen for the Architects Section in the Baton Rouge United Givers Fund Campaign is reproduced here in the hope that it will awaken the generosity and free-enterprise fiber in the profession. It's so much easier to attend to these responsibilities at home.

Memo to the Members of the Baton Rouge A.I.A. Chapter

From: Roy Kuyrkendall and Frank Brocato

RE: This Year's United Givers Fund Campaign

As co-chairmen in charge of soliciting the members of our profession in this year's United Givers Fund campaign, we attended a meeting at UGF headquarters a day or so ago. On one hand, we were shocked at the poor level of participation by our group in this important annual community effort, and on the other hand, we were pleased with the size of contributions made in the past by the ones who have participated.

Although it is needless for us to point out the healthy state of the construction economy this year, we remind you of data in the LSU Business Review which indicates a spiralling trend with each passing month. Predicated on this period of prosperity, an appeal is being made to you this year to adequately support the important health, welfare, character building and medical research agencies in the Fund. Your pledge card is enclosed.

We further ask that you make use of the enclosed supply of pledge cards to solicit the associates and employees of your organization. We were astounded to find that very few of these people have been given the opportunity to support this important civic undertaking in the past.

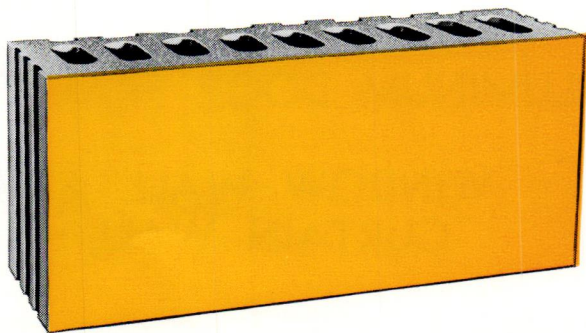
One of us will be calling you within the next few days to discuss your pledge and to make an appointment to pick up your pledge card (along with the contributions of your employees). Meantime, we hope you will consider giving what is considered to be a fair share gift according to the guide listed on the pledge card. Bear in mind the prosperous level of practice we are currently enjoying, and I hope you will agree it's little to give in the interest of our growing community.

Cover: John H. Schaeffer toys with the idea of United Giving—hoping that you will not be the missing link in this important community activity.

In This Issue

Civic Responsibility	4
Downtown BR Revivment Is Seen Soon by Architect	7
Your Liability Insurance Policy	8
FOUR Coffee Breaks a Day?	11
News, Notes, Zip Coders	13
If First Impressions Are Lasting Impressions	14

STARK STRUCTURAL GLAZED TILE



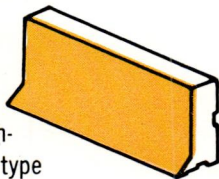
**LOWEST MAINTENANCE • SCRATCH
RESISTANCE • FIRE-PROOF SAFETY •
UNEQUALLED DURABILITY • INITIAL
ECONOMY • PERMANENT COLOR**

Only Structural Glazed Tile offers all of these performance, esthetic and economical advantages for wall construction.

Only Stark offers Structural Glazed Tile in such a wide variety of types to satisfy requirements of fire safety, sanitation, economy and design versatility.

NEW FEATHEREDGE COVE BASE . . .

Eliminates need for recessed floor construction. Stark Featheredge base may be installed after floor construction to accommodate resilient type floor coverings.



FULL SERVICE . . . We will be most happy to be of service at any time during your planning, specifying, bidding or building. Full information including sizes, colors, samples and prices are available . . . You'll find us convenient to write or call.



ACME BRICK of LOUISIANA

Division of Acme Brick Company

General Office, 924 Joplin, P. O. Box 2801, Baton Rouge, Louisiana

Custom Aluminum

Fabrication . . .

SPECIAL WINDOWS

ALUMINUM DOOR FRAMES

SUNSCREENS AND
DECORATIVE GRILLES

WINDOW WALL AND
CURTAIN WALL

ALUMINUM FLUSH DOORS

WE ARE AT YOUR SERVICE . . . CALL US FOR COMPLETE DESIGN
ASSISTANCE AND PRELIMINARY ESTIMATES.

ALUMAGLASS
CORPORATION

NEW ORLEANS

739 S. Clark St.

504-486-6581