



# LOUISIANA ARCHITECT

JULY

1965

OFFICIAL PUBLICATION OF THE LOUISIANA ARCHITECTS ASSOCIATION

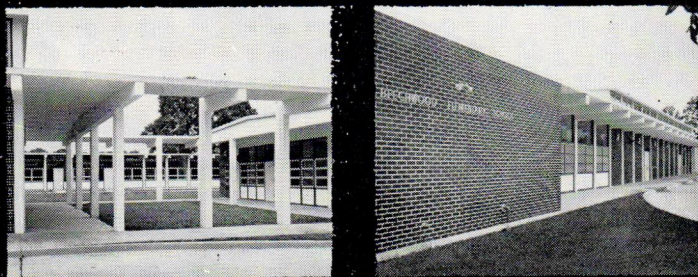


# Architecture was Centuries

# Old...

before this school was designed . . . an art which ages ago first utilized structural shapes and members still basic in construction. Arches. Columns. Beams. Used by **architektons** in shaping the glory of ancient Greece . . . used today by architects such as Brocato-Bentin of Baton Rouge, La., in shaping schools like Beechwood Elementary, recently completed in East Baton Rouge Parish at a cost far below the original budget. Ancient concepts with a new look. Graceful arches of prestressed concrete by Louisiana Concrete Products, Inc. Economical, fireproof, maintenance-free. Prestressed for greater strength, faster and better construction . . . to help make difficult elements become decorative features. A new avenue to creativeness by Louisiana Concrete.

**Architects:** Brocato-Bentin, Baton Rouge, La.  
**Structural Engineer:** Edward E. Evans, Baton Rouge, La.  
**Contractor:** Crump Construction Co., Baton Rouge, La.  
**Owner:** East Baton Rouge Parish School Board



**LOUISIANA CONCRETE PRODUCTS**  
**INC.**

4747 Choctaw Drive      Baton Rouge, Louisiana  
5401 France Road      New Orleans, Louisiana  
2101 Common St.      Lake Charles, Louisiana