

LOUISIANA ARCHITECT

JUNE

1965

AMERICAN INSTITUTE
OF
ARCHITECTS
JUN 23 1965
LIBRARY



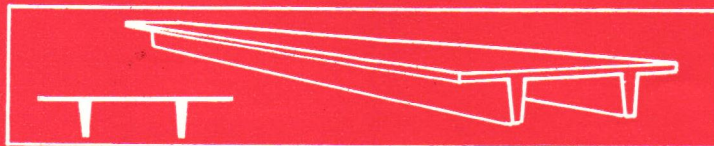
OFFICIAL PUBLICATION OF THE LOUISIANA ARCHITECTS ASSOCIATION

ZEPPELIN HANGAR PROBLEM SOLVED!



If you own a Zeppelin, you can truly appreciate the immensity of the problem! And even if you don't own one, you can still appreciate the solution:

free spans up to a full 75 feet,
with new Longspan Double-Tees by Louisiana Concrete.



These new, longer-length prestressed spans are unsurpassed by any material, in strength, durability and economy! They open the way for entirely new concepts in construction of warehouses, freight terminals, department stores or any structure requiring lots of free, open space.

Longer spans with more reliability and lower cost . . . yours with new Longspan Double-Tees, another quality development of Louisiana Concrete for better, safer building.

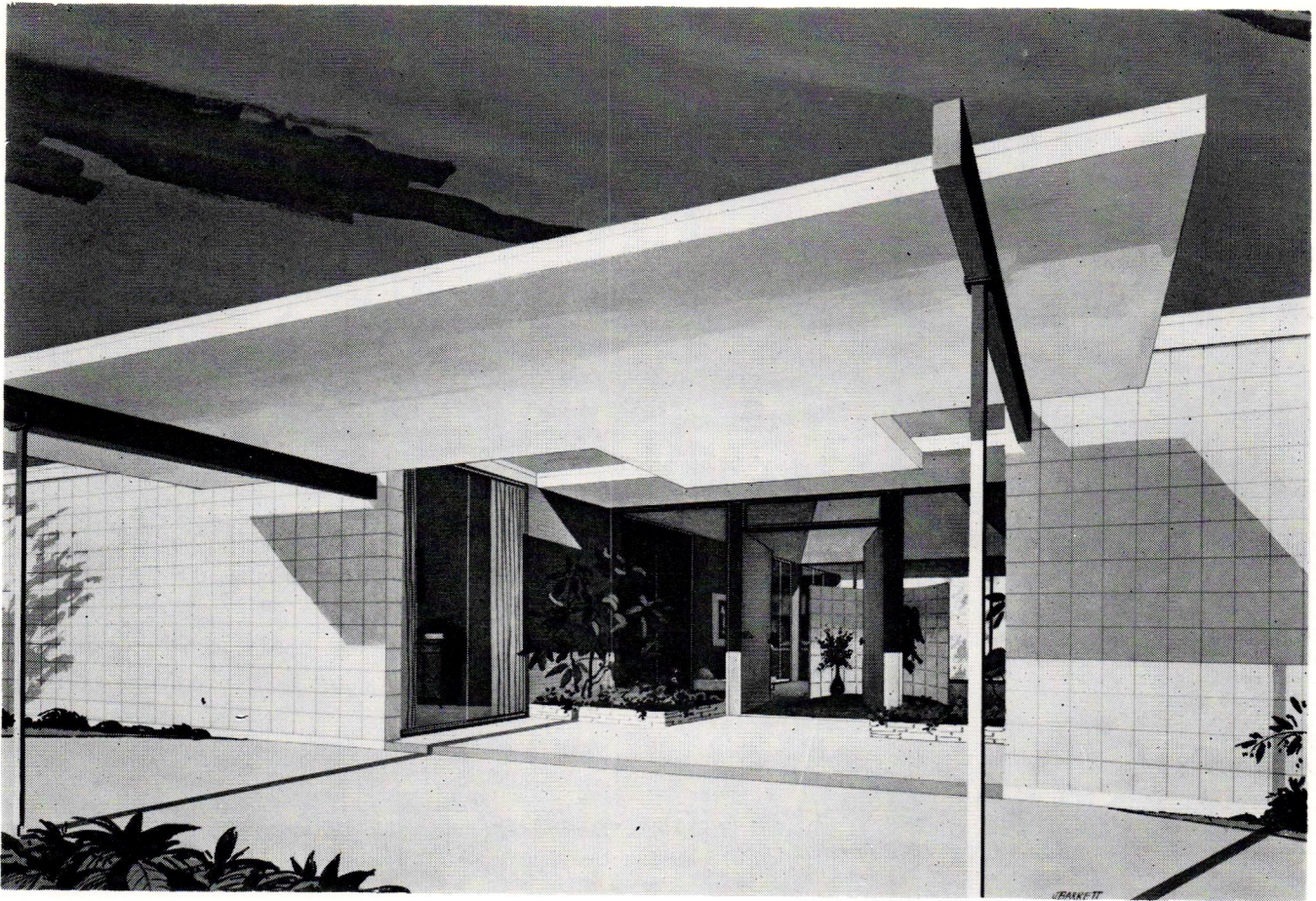
LOUISIANA **CONCRETE** PRODUCTS
INC.

BATON ROUGE, LOUISIANA
4747 Choctaw Drive

NEW ORLEANS, LOUISIANA
5401 France Road

PORT ALLEN, LOUISIANA
Louisiana Highway 1

LACRETE, INC.
LAKE CHARLES, LOUISIANA
2101 Common St.



Architect: ROBERT E. TUCKER, JR.

The Concrete Industries' HORIZON HOME will be shown in the Terrytown Section of the 1965 New Orleans Parade of Homes.

Out of the HORIZON HOMES Program

**Distinctive design ideas with
MODERN CONCRETE**

Beautiful things are being done, today, with concrete. Typical are the outstanding home designs created by architects for the annual HORIZON HOMES Program, sponsored by the concrete industries.

Modern concrete opens the way to fresh ideas. Architects are turning to concrete more and more for vital structural elements, as well as for intriguing decorative effects. No other basic material is so versatile or offers the home designer such freedom for innovation. Concrete offers a virtually unlimited range of colors, textures, patterns and shapes. Architects are finding that concrete readily accommodates the newest concepts in modern living and provides opportunity for distinctive home design.

Be sure to see the Concrete Industries' HORIZON HOME during the 1965 New Orleans Parade of Homes for fresh ideas in residential design. Located in the Terrytown section of the Parade, this home was designed by architect Robert E. Tucker, Jr. and built by Segall Construction Inc.

PORTLAND CEMENT ASSOCIATION

611 Gravier Street, New Orleans, Louisiana 70130
A national organization to improve and extend the uses of concrete

**TYPICAL PRESTRESSED CONCRETE PRODUCTS
... AND HOW THEY ARE USED**

**Girders
Beams
Columns
Roof and floor units
Slabs
Wall panels
Joists
Piling**

**Warehouses
Industrial plants
Bridges and overpasses
Schools
Gymnasiums
Auditoriums
Public buildings
Shopping centers
Office buildings
Terminals
Storage tanks
Stadiums
Railroad ties
Apartments
Transmission poles**

LOUISIANA ARCHITECT

OFFICIAL JOURNAL OF THE LOUISIANA ARCHITECTS ASSN.

Vol. IV

No. 8

THE LOUISIANA ARCHITECT, Official Journal of the Louisiana Architects Association of the American Institute of Architects, is owned by the Louisiana Architects Association, not for profit, and is published monthly, Suite 200, Capitol House Hotel, Baton Rouge, La., telephone 348-4331. Editorial contributions are welcomed but publication cannot be guaranteed. Opinions expressed by contributors are not necessarily those of the Editor or the Louisiana Architects Association. Editorial material may be freely reprinted by other official AIA publications, provided full credit is given to the author and to the LOUISIANA ARCHITECT for prior use.

... Advertisements of products, materials and services adaptable for use in Louisiana are welcome, but mention of names or use of illustrations of such materials and products in either editorial or advertising columns does not constitute endorsement by the Louisiana Architects Association. Advertising material must conform to standards of this publication, and the right is reserved to reject such material because of arrangement, copy, or illustrations.

Printed by Franklin Press, Inc.

Editorial Advisors—W. J. Evans, W. R. Brockway, John L. Webb

Editor—Myron Tassin

Publisher—Louisiana Architects Association

Consulting Art Director — John H. Schaeffer.

LAA OFFICERS AND BOARD

David L. Perkins, President • Clifton C. Lasseigne, Vice President • Robert E. Middleton, Vice President • G. Ross Murrell, Secretary-Treasurer — Directors: Paul B. Ritter, Max J. Heinberg, Sam Hamilton, Hugh G. Parker, Jr., Harding Flair, Frank N. Broca'lo, Sidney J. Folsø, Jr., P. Murff O'Neal, William R. Brockway, George M. Leake, Milton H. Finger, Jr., James H. Gibert, Ernest E. Verges, Murvan M. Maxwell, Immediate Past President • • Myron Tassin, Executive Director

Snags, Grey Areas and Wrinkles

Senate Bills 79, 80 and 81 have been enacted by the Legislature. Several amendments, prepared by the LAA, were adopted, thus removing some of the evident snags. However, the amendments by no means remove all potential bugs from the legislation.

There are grey areas like the definition of "substantial interest" which an architect or engineer is prohibited from having in a firm supplying building materials for state building or projects. Should a professional be allowed to have any interest at all?

One engineer felt state agencies should be added to those prohibited from issuing closed specs without justification. Will professional judgment be challenged by persons with less experience and training? Would it not be wise to seek to prohibit misuse of "allowances"?

Understand, please, that these are questions being posed to illustrate that these new laws, like many other laws, will have to be lived with for a while before it can be determined if inequities will develop. Should injustice ensue, the writer has been assured by at least two of the authors of the bills that they will help amend these statutes at the regular session in 1966.

On the final day of the session, Senator Duplantier, committee chairman, asked that LAA members be specifically requested, on his behalf, to look for wrinkles and to submit recommended amendments to him through LAA. He said he would personally introduce and steer worthy changes through the next regular session.

Therefore, if you should encounter unreasonable difficulties, please bring them to the attention of your State Headquarters.—EDITOR

Cover

Exodus? No — John H. Schaeffer illustrates incinerator story (see page 6)

In This Issue

An Attractive Incinerator?	6
Interior Decorating and Architecture	8
'Ruffin It'	10
Search for People Proof Design	14
News, Notes, Zip Coders	16
First Impressions	18



**Safe and sound...
the pressure-treated
wood products of ACW**

- *Top-quality materials* are carefully selected and seasoned.
 - *Proper penetration* of chemical preservatives is insured by ACW pressure equipment. Every step of manufacture is quality controlled.
 - *Quickest delivery* from any of ACW's five plants. We maintain large inventories of standard items... or make to your specifications.
- Poles, piling, crossties, crossarms, fence posts, lumber—pressure-treated with creosote, creosote-coal tar or pentachlorophenol.

AMERICAN CREOSOTE WORKS, INC.

"Built on 64 Years' Experience"

PLANTS AT
SLIDELL, LA. . . . WINNFIELD, LA. . . .
LOUISVILLE, MISS. . . . JACKSON, TENN. . . .
PENSACOLA, FLA.

WRITE, WIRE OR CALL—SALES OFFICES:
New Orleans, La. Jackson, Tenn. Pensacola, Fla.
UNiversity 1-1455 427-8561 HEmlock 8-4629
Kansas City, Kans. Chicago, Ill.
COLfax 2-2455 835-0608



Our studio is staffed with artists who interpret your ideas into full-color renderings of any architectural project. At Peter Briant Associates renderings are delineated from their most effective views, either exterior or interior, fully landscaped and placed in their proper geographical setting to provide dramatic emphasis to your project.

peter briant associates, inc.

• THE CLAIBORNE TOWERS / CANAL STREET • NEW ORLEANS, LOUISIANA 70112 • TELEPHONE 522-3366 •