

# LOUISIANA ARCHITECT

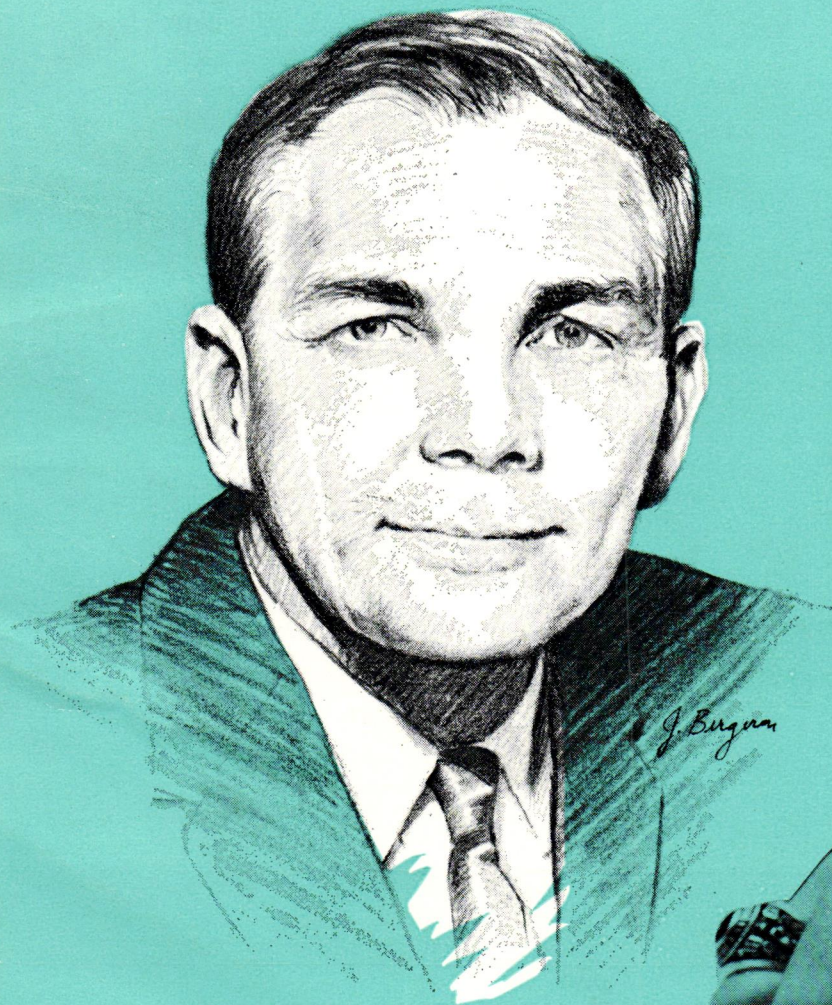
MAY

1964

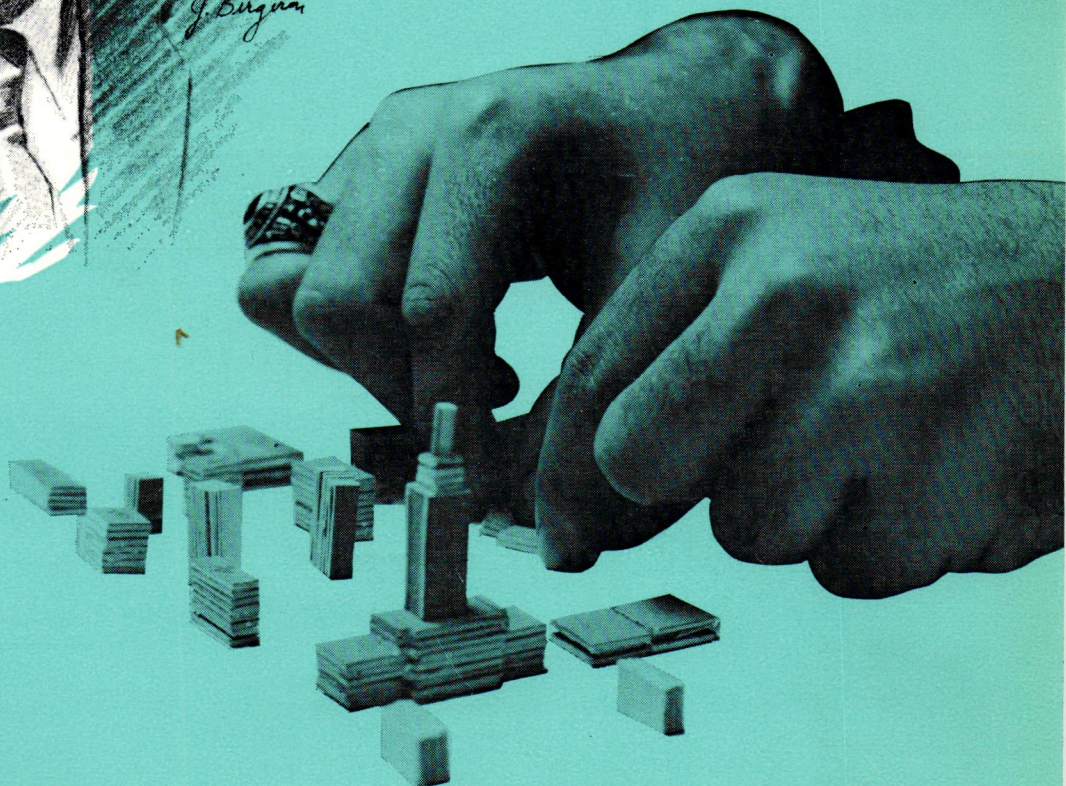
AMERICAN INSTITUTE  
OF  
ARCHITECTS

MAY 25 1964

LIBRARY



Very best wishes to Governor McKeithen  
as he pieces together his administration.



OFFICIAL PUBLICATION OF THE LOUISIANA ARCHITECTS ASSOCIATION

## When Is An Architect A Sculptor?

When he can etch the image a client wishes in a new building. Dignity or drama, elegance or reserve, charm or high style . . . wishes easily fulfilled when you choose concrete block from the vast array of shapes and sizes offered by Louisiana Concrete Products, Inc.

Dimension can dominate a wall, or play lightly across it . . . provide impact, or accent . . . pattern or texture. Block for strength, economy, beauty. Block for shaping images. What other modern building material gives you wider latitude?

**CONCRETE MASONRY...** *Permanent Walls of Fashion*

**LOUISIANA CONCRETE PRODUCTS  
INC.**

**BATON ROUGE, LOUISIANA** **NEW ORLEANS, LOUISIANA**  
4747 Choctaw Drive 5401 France Road

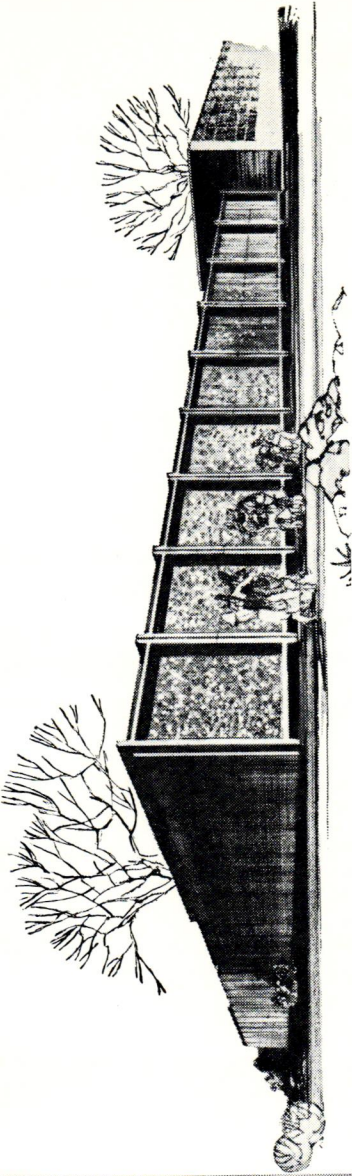
**LACRETE, INC.**  
**LAKE CHARLES, LOUISIANA**  
2101 Common St.

# No. 5 demountable classroom

a.i.a. file: 4-a

Prepared as a service to architects by Portland Cement Association

Clip along dotted line

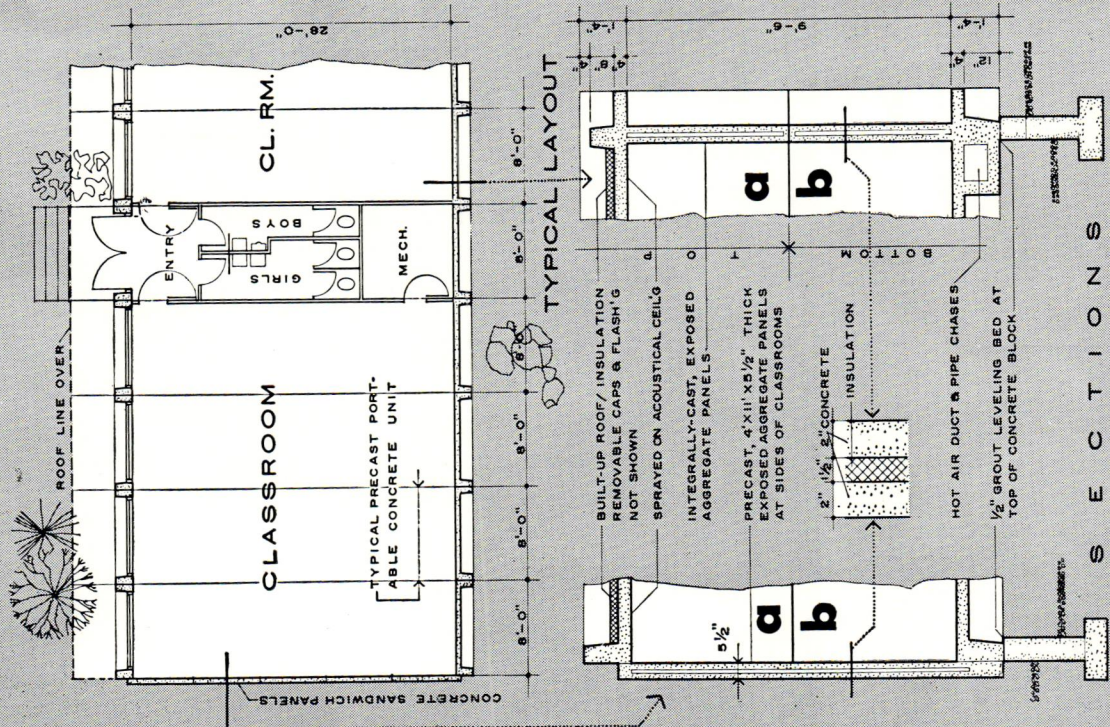
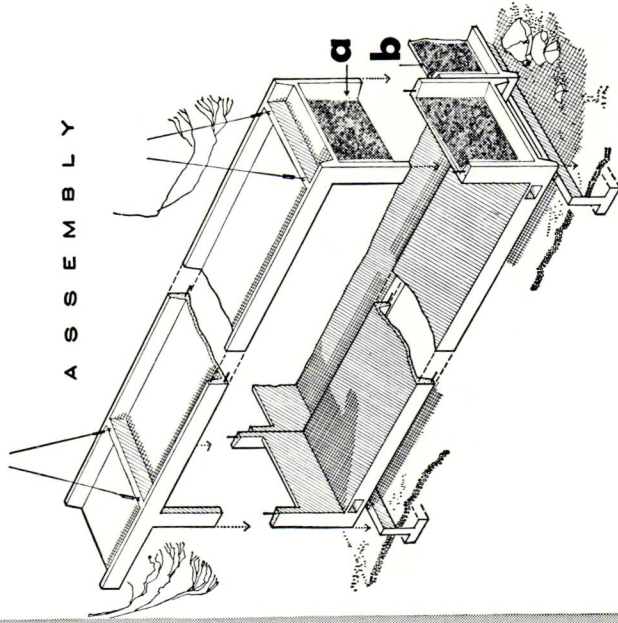


Pittsburgh Architects: John Pebruhn, A.I.A., Deeter and Ritchey, A.I.A., and Lawrence & Anthony Wolfe, A.I.A.  
Consulting Structural Engineer: R. A. Zern, Pittsburgh

**Entire classrooms precast in concrete** make up the new addition to the Homewood Elementary School, Pittsburgh, Pa. The design brings beauty, extra utility and easy upkeep to what is usually a "temporary" type of construction. Moreover, a degree of portability is achieved which allows future transportation to another site at very nominal cost.

The concrete segments—each 8' wide by 28' long—include a roof or floor section combined with half of each side wall. The precast units were designed for mass production and contain all the essentials of classroom planning. Air ducts, concealed conduits and pipe chases provide a finished room without unsightly exposed utilities.

Oriented to enclosed, planted playgrounds, the structure is completed by a street facade of integrally cast exposed aggregate panels that enhance aesthetic values... keep out dust and noise... discourage vandalism.



## PORTLAND CEMENT ASSOCIATION

611 Gravier Street, New Orleans, Louisiana 70130

A national organization to improve and extend the uses of concrete

THE LOUISIANA ARCHITECT, Official Journal of the Louisiana Architects Association of the American Institute of Architects, is owned by the Louisiana Architects Association, not for profit, and is published monthly, Suite 200, Capitol House Hotel, Baton Rouge, La., telephone DI 8-4331. Editorial contributions are welcomed but publication cannot be guaranteed. Opinions expressed by contributors are not necessarily those of the Editor or the Louisiana Architects Association. Editorial material may be freely reprinted by other official AIA publications, provided full credit is given to the author and to the LOUISIANA ARCHITECT for prior use.

... Advertisements of products, materials and services adaptable for use in Louisiana are welcome, but mention of names or use of illustrations of such materials and products in either editorial or advertising columns does not constitute endorsement by the Louisiana Architects Association. Advertising material must conform to standards of this publication, and the right is reserved to reject such material because of arrangement, copy, or illustrations.

Printed by Franklin Press, Inc.

Editorial Advisors—W. J. Evans, W. R. Brockway

Editor—Myron Tassin

Publisher—Louisiana Architects Association

Consulting Art Director — John H. Schaeffer.

**LAA OFFICERS AND BOARD**

Murvan M. Maxwell, President • David L. Perkins, 1st Vice-President • Henry Leroy Johns, Jr., 2nd Vice-President • John Louis Webb, Secretary-Treasurer — Directors: Clifton C. Lasseigne • H. H. Land, Jr. • William E. Bergman • Louis Moosy • Max Heinberg • Ray Reed • Patrick Gallagher • John A. Bani • F. V. Von Osthoff • Ralph Kiper • August Perez, III • M. Wayne Stoffle • Ernest E. Verges • Joseph M. Brocato, Immediate Past President • Myron Tassin, Executive Director

## Three Little Words

Needless to remind you that the Architect's Bill was vetoed in 1962 because it required that an architectural graduate acquire experience *IN THE OFFICE* of an architect before licensing.

The 1964 version of the Bill calls for experience under *THE DIRECT SUPERVISION* of an architect rather than *IN THE OFFICE*.

This seemingly insignificant change has brought support from many Legislators who, like the Governor, opposed the 1962 Bill because of this experience requirement.

As LAA members contacted Legislators during the past few weeks, many Representatives and Senators wondered what might happen if a recession, for instance, made jobs "*IN THE OFFICE*" unavailable. Others worried about the graduate who could not return to his hometown after graduation because his hometown has no architects. Some were concerned about the person who wants to qualify to take the exam through experience alone.

The experience requirement will not take effect until July 1, 1968 so that students presently committed in architectural school won't be affected.

Changing three little words can well mean success in the current legislative session . . . particularly, if LAA members continue to contact their Legislators.

Very special thanks are in order for the interested Legislators who made this excellent suggestion.

---

COVER ART BY JOHN BERGERON

---

### IN THIS ISSUE . . .

What Does H307 Do? .....	7
Know Your H307 Co-Sponsors .....	8
Experience Requirements in Other States .....	11
La. Architectural Educators Offer Support .....	12
Three Engineer Groups Endorse H307 .....	14
John Lawrence, F.A.I.A. ....	15
Kenilworth Plantation .....	16