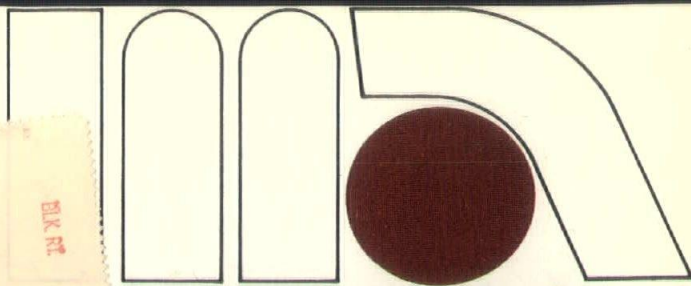


20036

EDITOR AIA JOURNAL
1785 MASS AVE N W
WASHINGTON DC



february 1972

midwest architect



1972 missouri building report

AMERICAN INSTITUTE
OF
ARCHITECTS

MAR 9 1972

LIBRARY



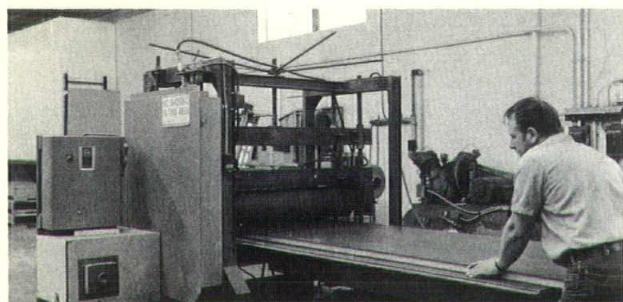


a Hearty Welcome to our new home

And you **deserve** this welcome! You—our customers — made it all possible.

We're pretty proud of our fine new facility at 5301 East 59th, in the Byram Ford Industrial Park. Of course, we have 30,000 square feet of floor space today, and it's a little more than we need. But with your help, we expect to "grow up to it."

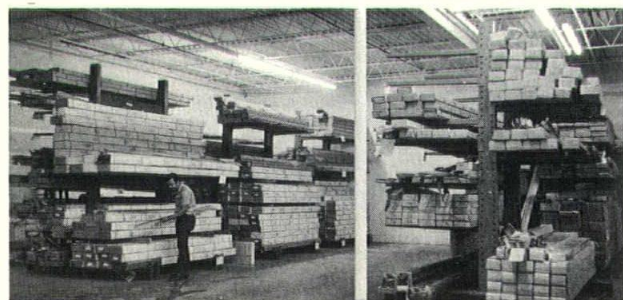
As most architects know, Glen O'Brien people take on a partition job as a single-source responsibility. With your supervision, we plan your partitions, build them, install them. Your Glen O'Brien partitions are built in Kansas City by Kansas City workmen. How could anyone else possibly give you comparable service?



This press seals our doors.



This is the panel-laminating department.



Storage area for aluminum extrusions.



5301 East 59th
Kansas City, Missouri 64130
Phone 361-2334

a note of introduction



Reaching your desk is a new magazine, the progeny of two previously published architectural publications that have merged to bring a more complete, detailed, and professionally-designed publication to architects, builders, suppliers and individuals who regularly utilize the services of architects.

Midwest Architect replaces and succeeds the *Missouri Architect*, formerly published as the official publication of the Missouri Council of Architects, and *Skylines*, the official publication of the Kansas City Chapter of the Missouri Council. Mailing lists of the two publications have been merged and augmented into one viable list of approximately 4,000. Included are all members of the Missouri Council of Architects which includes those in southwest Illinois and eastern Kansas, leading Missouri contractors, superintendents of schools of all Missouri educational institutions of at least 12 grades plus key officials in the state's colleges and universities, key city county and state officials, the Missouri Congressional delegation and other key

persons whose duties cause them to have an interest in latest architectural developments in the state.

Missouri Architect is being published by Fan Publications, Inc., of Kansas City. However, editorial responsibility and direction lies in the hands of an editorial committee comprised of members of the state's four A.I.A. chapters. Although Midwest Architect will attempt to present news coverage of activities of individual architects and chapters in the state, its primary objective will be to photographically and in print present latest trends, developments and achievements of the architectural profession in Missouri not only to its architect readers but even more importantly to key citizens across the state.

Midwest Architect is owned by the Missouri Council of Architects, it is being edited by architects. Its success will depend upon the cooperation, participation and assistance it receives. Your comments and criticisms on how it can better serve you in succeeding issues are invited.

—floyd e. sageser, publisher—



Photo by Midwest Research Institute

March 4, 1971

Buildex Lightweight
Exposed Aggregate Concrete

Buildex Lightweight Structural Aggregate Plays An Important Role In The Construction Of The K.C.I. Airport

BUILDEX has the ability to express both beauty and strength as used in the construction of Kansas City's newest airport.

The light tone buff color of the BUILDEX ceramic coated surface is pleasing to the public eye when exposed by light sand blasting.

With a structural design strength of 4,000 psi, over a two year period BUILDEX lightweight structural concrete 28-day strengths averaged in excess of 5,300 psi with a coefficient of variation of 9.17, which is excellent concrete control.

For more information on BUILDEX Lightweight Expanded Shale Coated Aggregate please contact us.

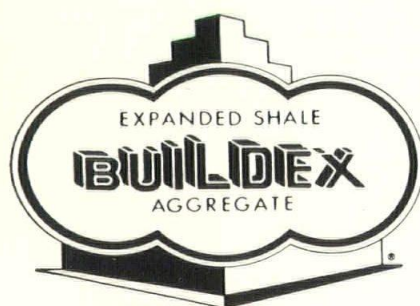
CREDITS:

Kivett and Myers, Architects

Burns & McDonnell, Engrs.

Del E. Webb Corp. General Contractor

Botsford Ready Mix Co., Supplier



BUILDEX, INC.

Phone
913/242-2177

P. O. Box 15
Ottawa, Kansas
66067

contents

banner building year for kc.....	6
kansas city area projects	12
wide array of projects in st. louis	16
st. louis area projects	20
out state projects	28
in the news	30

staff

floyd e. sageser	publisher
truman l. sloan.....	associate publisher
m. h. "mouse" straight.....	sales manager
mrs. patricia a. krisman	production manager
mrs. marilyn j. sageser	circulation manager
fred l. boehner	advertising sales

editorial

edward j. wimmer, a.i.a.	kansas city
ted wofford, a.i.a.	st. louis
edwin c. waters, a.i.a.	springfield
keith g. westenhaver, a.i.a.	columbia

advertising sales representatives

the atzenweiler company, missouri
box 16050
kansas city, mo. 64112

jerry clark, st. louis
3651 ridgedale
st. louis, mo. 63121

berthke-schaedel co., chicago
1474a merchandise mart
chicago, ill. 60654

john w. foster, pittsburgh
239 fourth avenue
pittsburgh, pa. 15222



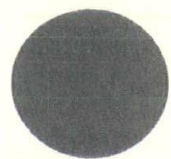
cover photo

the photographer, using an extreme bottom to top angle and utilizing heavy contrast printing has created this geographic design of a column capitol.

photo credits

Pages 3—M. H. Straight; 6—Shell Oil; 7—Paul Kivett, Shell Oil; 8—Paul Kivett; 10—Crown Center, Midwest Research; 12—Paul Kivett, Peckham-Guyton; 13—Lin-scott-Haylett, Peckham-Guyton; 14—Wilborn & Associates; Paul Kivett; 17—Bank Building Corp.; 18—Wedemeyer, Cernik & Corrubia, Inc.; 20—Dorrell Photocolor; 22—Hugo Harper; 24—Pioget, Dorrell Photocolor; 26—Robert Pettus; 28—Warner Studio; Scheffer Studio.

Midwest Architect is the official publication of the Missouri Council of Architects, Inc., a state organization of the American Institute of Architects. It is published in February, April, June, August, October and December by Fan Publications, Inc., 912 Baltimore, Kansas City, Mo., 64105. Telephone 816-474-4440. Subscriptions for A.I.A. members are included with A.I.A. memberships. Subscriptions for non-members, \$3.00 per year; \$8.00 for three years. Single copies 75¢. Opinions expressed herein are those of the publisher and contributing editors and the appearance of products or services, names or pictures in either advertising or editorial copy does not necessarily constitute endorsement of the product by the Missouri Council of Architects. Advertising in Midwest Architect is subject to the approval of the Editorial Committee, Missouri Council of Architects, Inc.



kansas city area construction

banner building year for kc in 1972

When one-third of a metropolitan area's \$3.2-billion announced construction is in major projects (\$20 million or over) currently under way and a sizeable piece of the remainder also is in progress, one could safely assume vitality is present.

When that city is Kansas City, Mo., with a population at the 2 million mark, it is somewhat of a per capita construction first.

Costwise and undoubtedly in overall impact heading the list of the 15 major projects is the 5,000-acre Kansas City International Airport (K.C.I.) with its price tag of \$240 million. Scheduled to open in July, this facility is designed to offer almost car-door-to-plane-seat efficiency. A short walk across an intervening ticketing and baggage area from curbside is all that's required of the traveler. The facility includes new runways, tower, baggage, airplane maintenance and ancillary services to meet the demands of the Jet Age. Already the object of study by international Airport designers, it is the expression of Kivett and Meyers.

Because of the airport's unique design—three terminal pods in a unit and the drive-to-your-plane principle involved—the hyperbolic paraboloid airframe maintenance building on the site and the construction elsewhere in the metropolitan area of a sports complex with separate stadiums for baseball and football, the area's 1972 construction offers an unusual flourish.

Crown Center, the \$200-million city-within-a city just south of Downtown, has passed the 25 per

cent completion mark and is heading toward a 1973 completion of phase I which will include a 750-room hotel, a 300,000-square-foot retail-entertainment complex, a bank building, 450 high and low rise apartments, a 10-acre square and 1,700 parking spaces. Two additional phases are projected for completion by 1980. This is a project of Crown Center Redevelopment Corporation, a subsidiary of Hallmark Cards. Edward Larabee Barnes is the master planner.

Lamar Hunt's (owner of the Kansas City Chiefs football team) imaginative 500-acre Worlds of Fun family amusement center on I-435 highway is scheduled to open April, 1973, at a cost of \$20.5 million.

Then there's the intriguing Harry S. Truman Sports Complex



This is an overall view of the \$75-100 million Tiffany Centro business community, a project of Plaza del Oro Corp. a wholly owned subsidiary of Shell Oil Co. Mid-Continent International Airport can be seen in the background.

which includes a 42,500-seat baseball stadium and a 77,000-seat football stadium in separate structures. A rolling roof to be used alternately for cover has never entirely faded from the plans. It has a \$52-million construction cost. Some architects have marveled at the enthusiastic electorate that would sponsor such a project. Project architects are Kivett and Meyer of Kansas City. Charles Deaton, Denver, is the designer.

Tiffany Centro, a \$100-million planned development south of the K.C.I. Airport, will house a Braniff International Motor Hotel, a Stouffer Inn and a bank-office building. Marshall and Brown is controlling the design of all that goes into this tract—a project of Plaza del Oro, a subsidiary of Shell Oil Company.

Scheduled for an official mid February opening is A.T.&T.'s long lines building. This \$4.5 million 2-story structure at 63rd near Paseo was designed by Davis, Horner and Blessing, architects.

Thumbing the remaining five major projects we have:

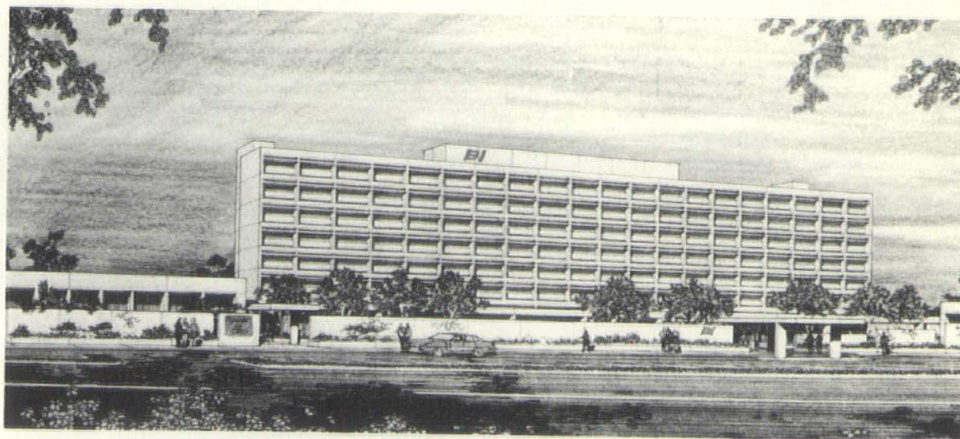
- Gateway Plaza development near the K.C.I. Airport entrance which will include motels and apartments in a \$100-million improvement plan. James W. Burns, Jr. is the architect.

- The Citadel, a close-in office and apartment complex at 63rd and Paseo, with a 6-story office building and 164 apartments well into first-phase completion. Total cost will be at \$75 million.

- Trans-World Airlines construction at K.C.I. Airport at \$60 million which embraces the 747/SST Airframe Overhaul Facility, shops and hangers (\$40 million), an air cargo facility, dining unit and commissary building, waste treatment plant expansion, and TWA's Kansas City simulator building. Aero-Shell, a combine of Biggs and Drummond and Cooper, Robison, Carlson, provided architectural planning.



This aerial photo by Paul Kivett of the Harry S. Truman sports complex reveals the frenzy of construction activity at the twin stadium complex and the extent of the surrounding parking lots.



A 200-room hotel to be constructed on the Tiffany Centro development on I-29 just south of the Kansas City International Airport is scheduled to start in the fall. The \$4-million dollar project will be operated by Braniff International Airways hotel subsidiary. Occupancy is planned for the spring of 1974.

kansas city area construction...

- Executive Office Park at I-435 and Roe, Overland Park, with one building topped out and improvements coming to total \$50 million. Boyle Wilson is the architect.

- Fox Hill Office Park also on I-435 in Overland Park has its office building and several others up with 28 buildings to be included in a \$40-million development. Fullerton, Carey Kastner & Oman are the architects.

- Four Colonies, a \$32-million project progressing on 141-acres at 83rd and Quivira as a planned unit development (P.U.D.) project. Nearing and Staats were the architects.

- A 10-story hospital for the Kansas City College of Osteopathic Medicine with 426 beds heading for a July opening at a cost of \$28 million. Robert W. Jackson Associates, Inc., were the architects.

- The Hallmark Cards Distribution Center in Liberty at the intersection of I-35 and U.S. 69 expected to be in operation in February at a cost of \$25 million. It includes 1.6 million square feet on a 595-acre site. This is a Marshall and Brown project.

- The Penn Valley Metropolitan Junior College campus about 15 blocks from Downtown—a \$20-million project with its first phase scheduled to open in January. This phase will house 3,500 students. Marshall and Brown are the architects.

- The Southwestern Bell Telephone Company Long Distance building addition of eight floors at a cost of \$20-million scheduled for a mid-1973 completion within the Downtown business district. Neville, Sharp and Simon are the architects.

The "sizeable piece of the remainder" actually under way but under the \$20-million minimum includes the Southwestern Bell Telephone Company office building in the northeast segment of the Downtown business district at \$13.5 million, a Kivett and Meyers

project; the University of Missouri—Kansas City medical school building at \$13.2; the I-435 bridge over the Missouri to the north at \$10-million; the Alameda Plaza luxury hotel in the Country Club Plaza, a Kivett and Meyers project at \$8 million and the Armour Processing plant in Martin City at \$9 million.

Also in the group are the Mark II apartments in the Downtown freeway loop at \$5.1 million, the Municipal Court building (Downtown) by Linscott and Haylett at \$3.8 million, Front Business Center at \$3.5 million, the Bluff street interchange to complete the Downtown freeway loop at \$3 million and the Plaza Point apartments (Country Club Plaza) at \$3.5 million, a George Peter Keleti & Associates project.

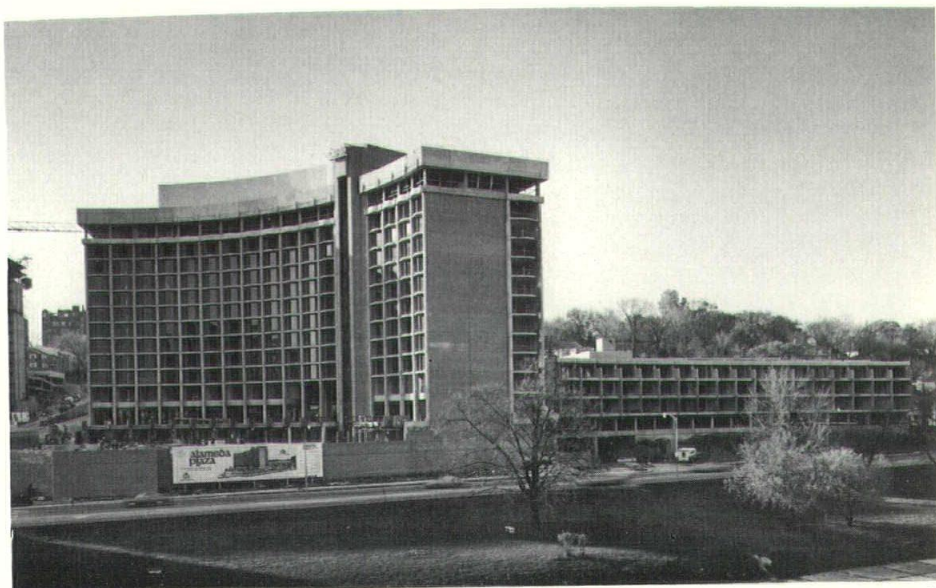
Hospital construction under way adds significantly to the total with the Independence Sanitarium and Hospital expanding 220 beds at \$11.5 million; St. Lukes Hospital with a \$9.5 million expansion under construction, a Neville, Sharp and Simon project; Martin Luther King, Jr., Hospital with a

\$5 million price tag, a Hewitt and Royer project; Veterans Administration Hospital with a new \$4.5 million research and education facility, and the Jackson County Hospital with a 56-bed, \$3.7 million addition, another Hewitt and Royer project.

The Baptist Memorial Hospital is adding an educational center and classrooms for \$2.7 million, Robert W. Jackson Associates, Inc., the architects; Research Hospital and Medical Center is adding nurses housing for \$1.6 million with Marshall and Brown serving as local consulting architects.

A new \$8 million addition to the North Kansas City Memorial Hospital will start this spring. A separate project adjacent to the North Kansas City Hospital is the Tri-County Mental Health Center. Robert W. Jackson Associates, Inc., is the architect on both projects as well as \$400,000 addition to the Shawnee Mission Hospital.

For balance consider that in the Missouri counties of Clay and Jackson there is \$22,446,775 in highway construction under way



This is the new Alameda Plaza Hotel that is scheduled for an April opening in Kansas City's Country Club Plaza. Kivett and Myers were architects with Linscott-Haylett and Associates handling the interior.

Continued on page 10

"THE ORIGINAL LIGHTWEIGHT AGGREGATE"

HAYDITE

Lightweight Structural
Haydite Concrete Reduces
Weight and Cuts Costs
Through—

- less concrete
- less labor
- longer spans
- smaller columns
- less reinforcing
- smaller foundations

plus—

- superior fire rating



TENMAIN BUILDING...The TenMain Building in Kansas City is a striking example of the economies of Haydite lightweight structural concrete. Complete design analysis for various structural systems, considering both Haydite concrete and conventional concrete, indicated a pan-joint system using Haydite lightweight concrete would be most economical. Using Haydite concrete in the parking garage adjoining the building permitted a reduction in the column size... an important factor where open floor and ramp space is paramount to operating efficiency.

ARCHITECT:
Charles Luckman & Associates, Los Angeles
ENGINEER:
Howard-Needles-Tammen & Bergendoff, Kansas City
ASSOCIATE ARCHITECT:
Marshall & Brown, Kansas City
CONTRACTOR:
Winn-Senter Construction Company, Kansas City
CONCRETE SUPPLIER:
Fordyce Concrete Company, Kansas City

Haydite aggregate is now "VITRI-COATED" for improved quality control through all phases of the job...from mix design to finishing. For detailed information, see your local Ready Mix producer, or contact us direct.

CONSTRUCTION THE MATERIALS
CARTER-WATERS
KANSAS CITY CORP. MO. 64108
2440 Pennway GRand 1-2570

Producers of
Haydite aggregate at
Centerville, Iowa, and
New Market, Missouri.

kansas city area construction...

and set for completion in 1972. There is an additional \$52,277,000 scheduled for letting in 1972 in the Missouri counties of Clay, Platte, Cass and Jackson.

On the Kansas side of the metropolitan area, \$10 million in highway construction was in construction or under contract in 1971 and an additional \$22 million has been tentatively programmed for letting in 1972.

For variety consider the Sunny Hills development just across the Missouri river from Kansas City's Downtown with 319 apartments well under way with Elsworth, Smith & Carlson the architects. Some of them are occupied, and 4,000 residential units are scheduled to come. Concorde Bridge development in Overland Park has completed 248 residential units of a projected 504, an Associated Designers and Architects design project.

In retail action, Stix, Baer & Fuller Store is building its first store out of St. Louis in the Ward Parkway Center more than 40 blocks south of the fashionable Country Club Plaza retail shopping area. J. C. Penney has scheduled its new 3-story department store for a February completion in the Blue Ridge Mall shopping center about 8 minutes on the 4-lane from the Downtown retail shopping area.

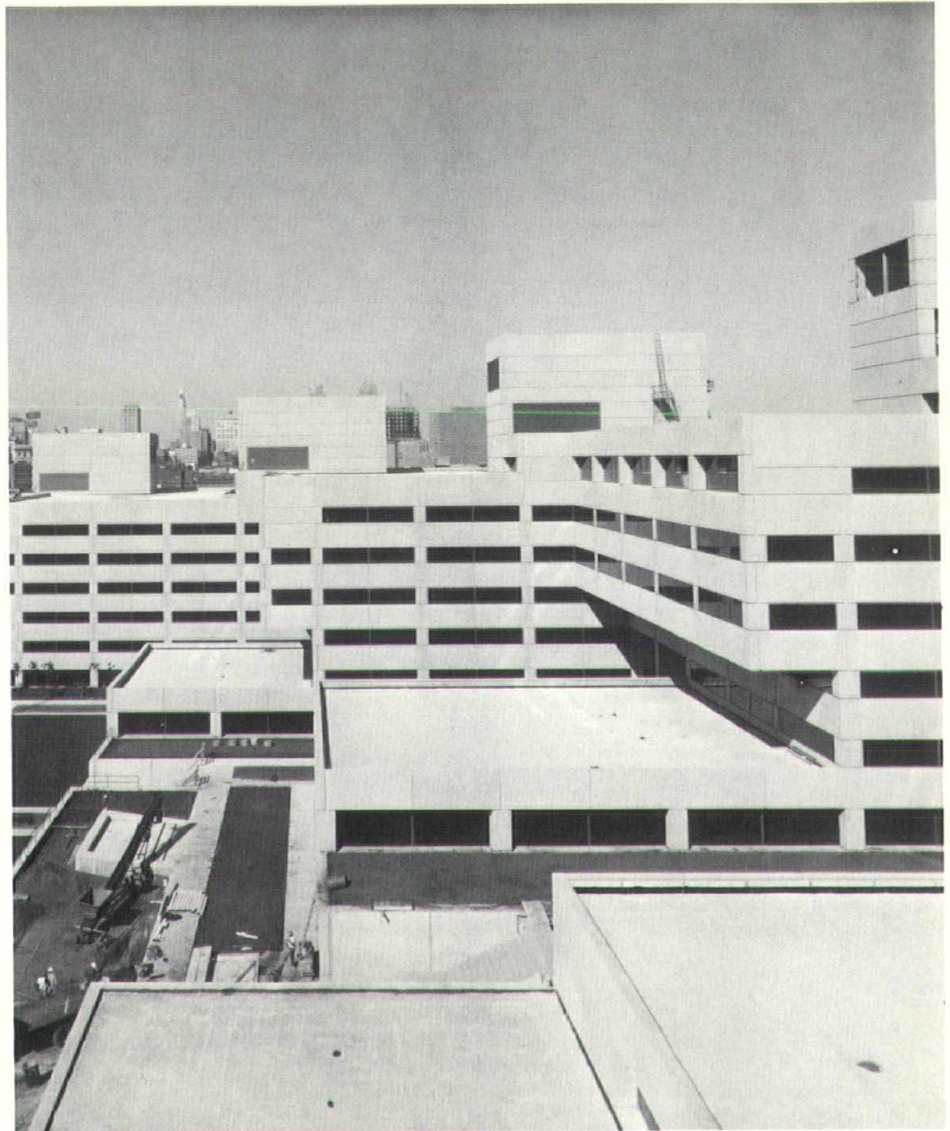
Venture Stores have three outlets under construction in the metropolitan area. It's also their first expansion out of St. Louis. T.G.&Y. Stores have six new outlets under way and Safeway stores, seven. And there are three new 100,000-square-foot shopping centers currently under way in the metropolitan area.

Strong upcoming construction projects include the Longview Community College buildings in Lee's Summit at \$1,750,000 with Marshall and Brown as the prime architect and Linscott and Haylett, associate architects, and Maple

Woods Community College in Kansas City North at \$1,198,000. Both are scheduled to start in March. Marshall and Brown; Seligson and Eggen are the architects.

Great Midwest Corporation

with 1,500 acres between Randolph and Claycomo, is a \$100-million projection scheduled to start a business-industrial park construction as soon as I-435 is completed.



FRAMED AGAINST the nearby downtown skyline, the new office buildings in Kansas City's Crown Center stand out as an architectural symbol of the city's future. Four of the five interconnected buildings containing a total of 660,000 square feet are shown here, stair-stepped along a sloping curve of Pershing road. The low rise building at the extreme left is the new headquarters of the Grand Avenue Bank and Trust Company. The office buildings, bank building and six-level parking garage beneath them were designed by Edward Larrabee Barnes, FAIA, New York, master planner for the \$200 million business and residential community being created by a subsidiary of Hallmark Cards, Inc.

Announced but not yet materialized are the following projects:

- A multimillion-dollar headquarters for the City National Bank & Trust Co. on the old Emery, Bird, Thayer store site in the heart of Kansas City's Downtown.

- The construction of an office building by Downtown Redevelopment Corporation at the north gateway to Downtown.

- A \$7-million Marriott motel at K.C.I. Airport.

- A Plaza Inn International near K.C.I.

- Three Ramada Inns — one near the new airport, one at 87th and Hillcrest and another at Reeder and 87th, Overland Park.

- Civic Plaza, a \$50-million plan to redevelop a section of the city south of the City Hall and Jackson County Courthouse, held up by litigation testing the state urban renewal law.

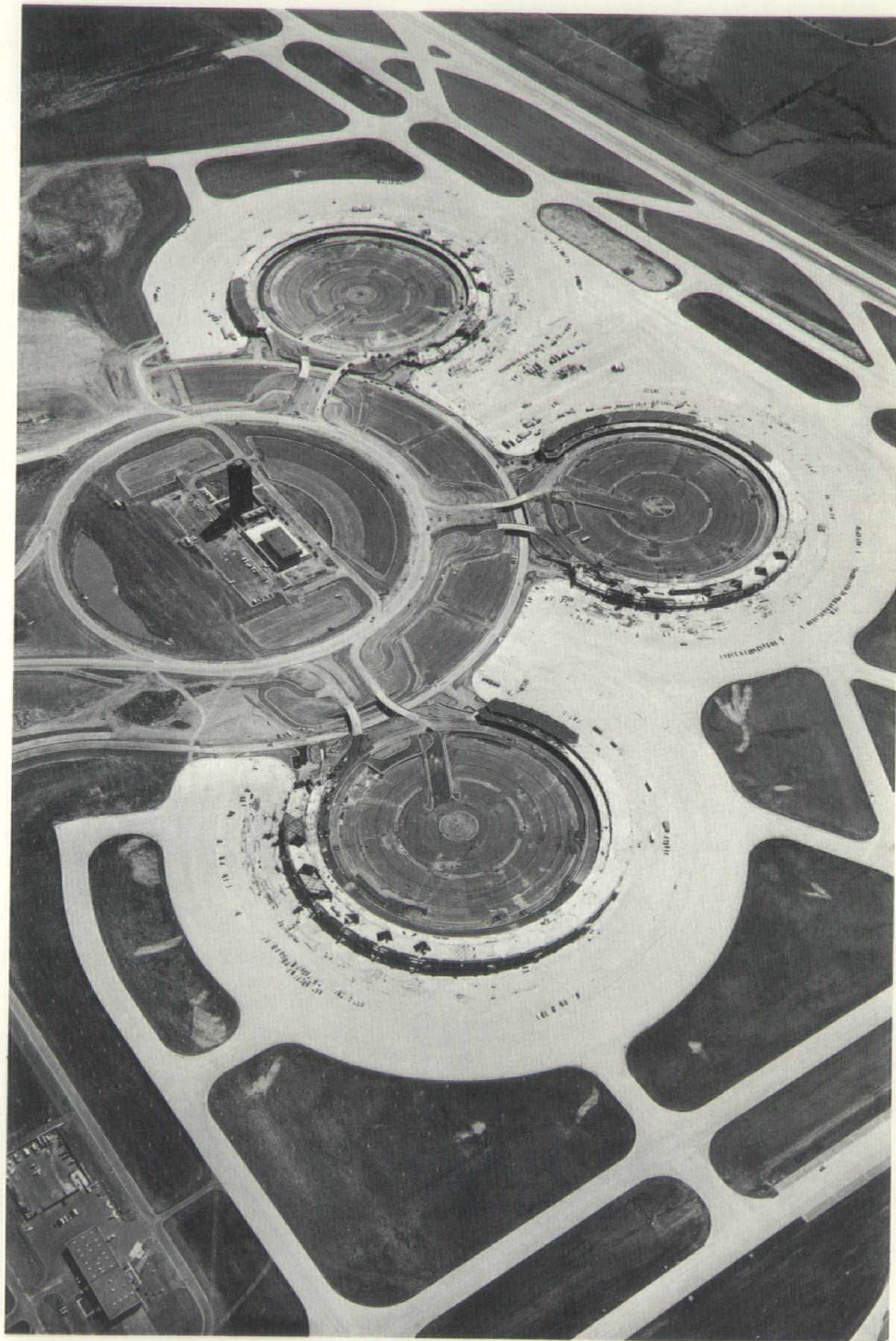
- Crosstown Center, a \$50-million redevelopment plan to include a part of the city south and west of the City Hall, held up by court action testing state urban renewal law.

- Place Liberte in Kansas City and Liberty north of the I-35—U.S. 69 interchange on U.S. 71 bypass, a multimillion-dollar residential-commercial project, is in planning.

- Jackson Plaza at M-7 and R. D. Mize Road in Blue Springs, also a multimillion-dollar venture in commercial and residential development, is not yet a reality.

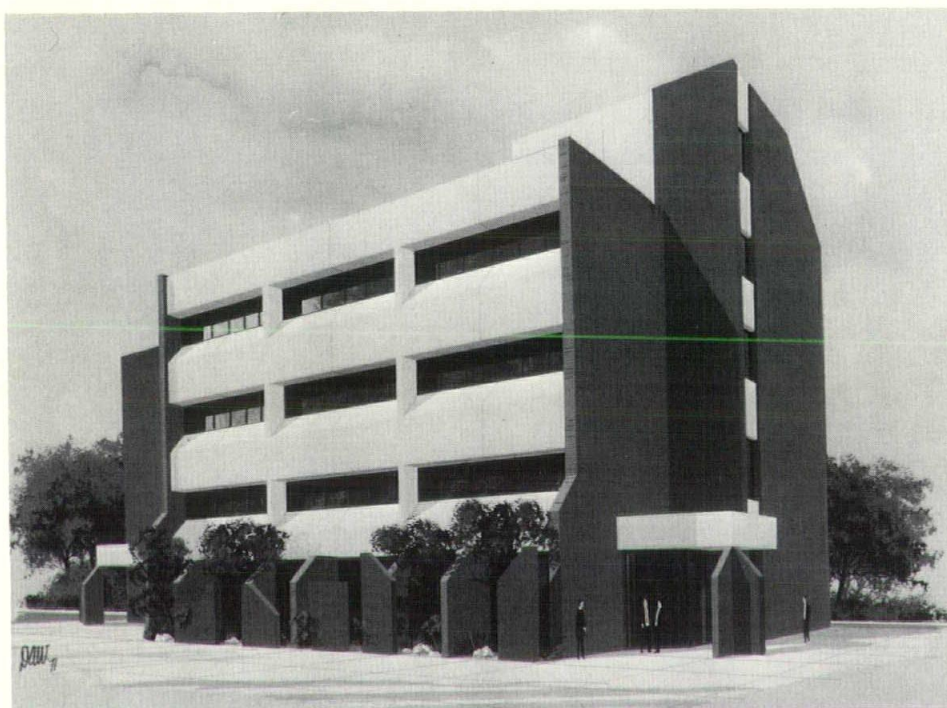
- Plans not yet definite but for which zoning has been obtained in the K.C.I. Airport development area actually total about \$400-million in private projections and exceed the public investment at K.C.I.

- Preliminary right of way acquisitions are under way for the construction of I-670 from State Line to Bluff to strengthen the city's corridors to the west. However construction starts are two years in the future.



Pod construction design of the Kansas City International Airport is clearly portrayed in the aerial of the \$240-million project expected to be ready for full operation in July, 1972. Control tower (center) appears to be serving as a giant sun dial for the complex. Passenger parking is on the center of each of the three pod terminals.

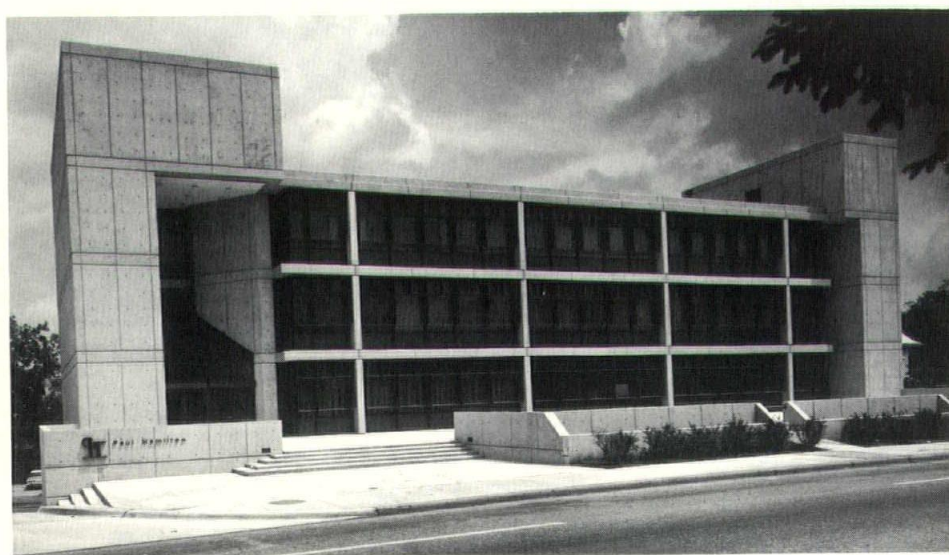
kansas city area projects



North American Savings Association

Grandview, Mo.
 Architect: Peckham-Guyton, Inc.

This office and banking facility was designed for North American Savings Association. The 4-story building, located in Grandview, Mo., contains 18,000 square feet.



Paul Hamilton Building

Kansas City, Mo.
 Architect: Urban Architects

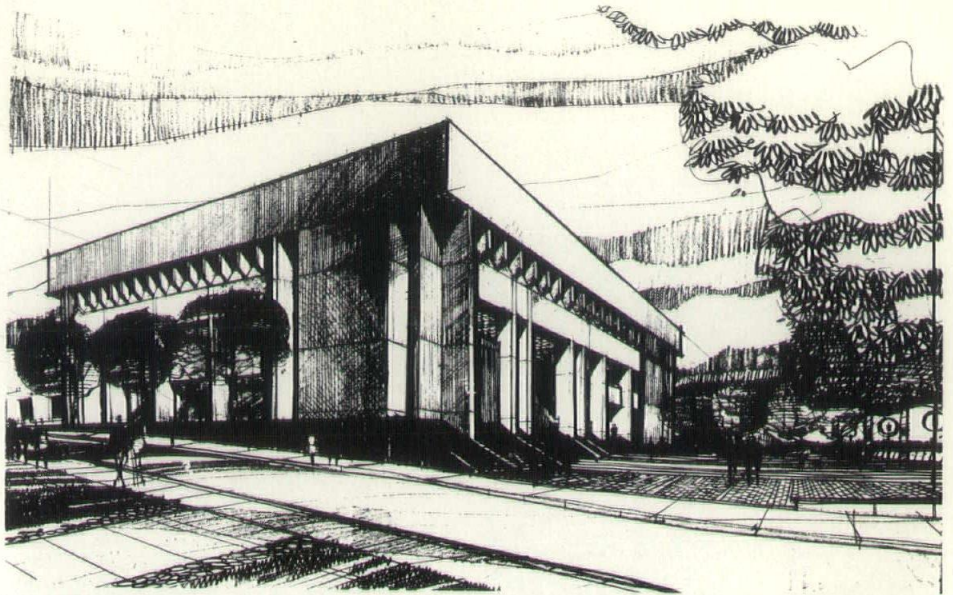
The 25,000 square foot structure at 4333 Madison Avenue, Kansas City, Mo., has rental space evenly divided over three floors and covered basement parking for 65 cars. The building is constructed of architectural concrete with a light sand blasted finish. To infill between the architectural concrete frame, a bronze anodized solar screen and aluminum window wall system was used with solar bronze glass and porcelain enamel panels.

Municipal Courts Building

Kansas City, Mo.

Architect: Linscott-Haylett and Associates

This Courts Building under construction at 11th and Locust in Kansas City has areas on the street level devoted to the court administrator, probation and prosecutors, all of whom have considerable "walk-in" public contact. Courtrooms are on the second and third levels in a linear system between public circulation and judges chambers. Phase Two of this project will be addition of courtrooms to the east.

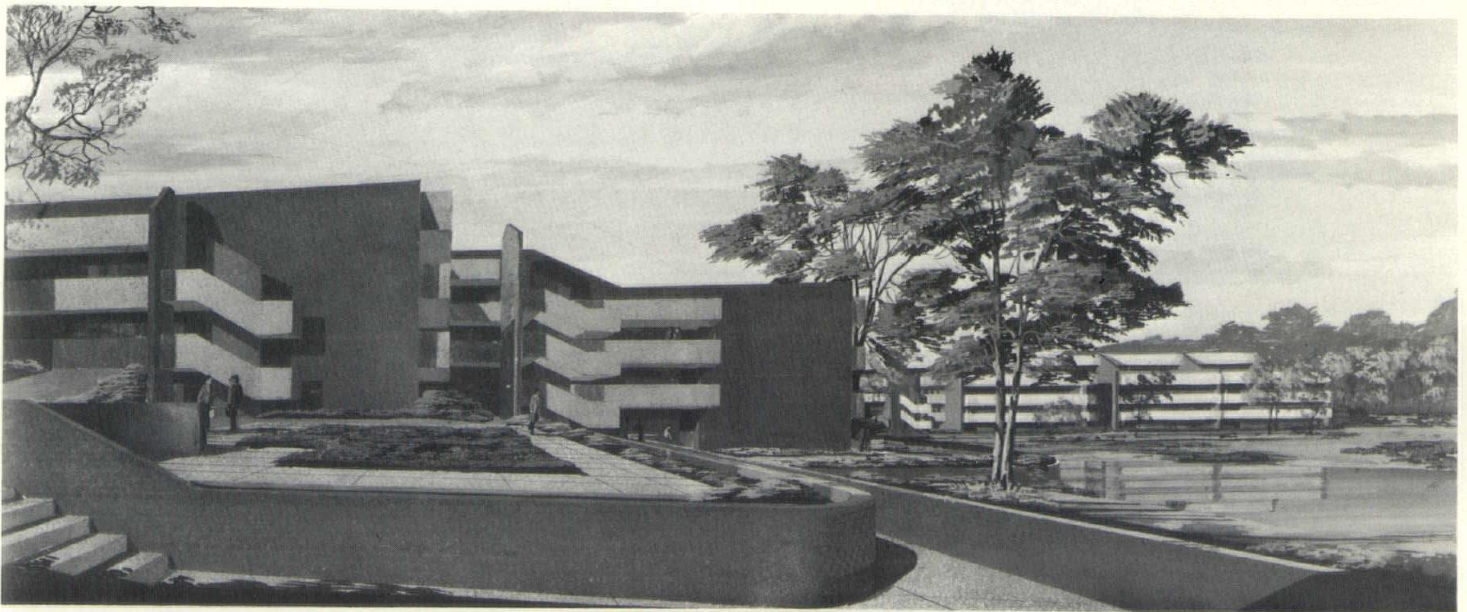
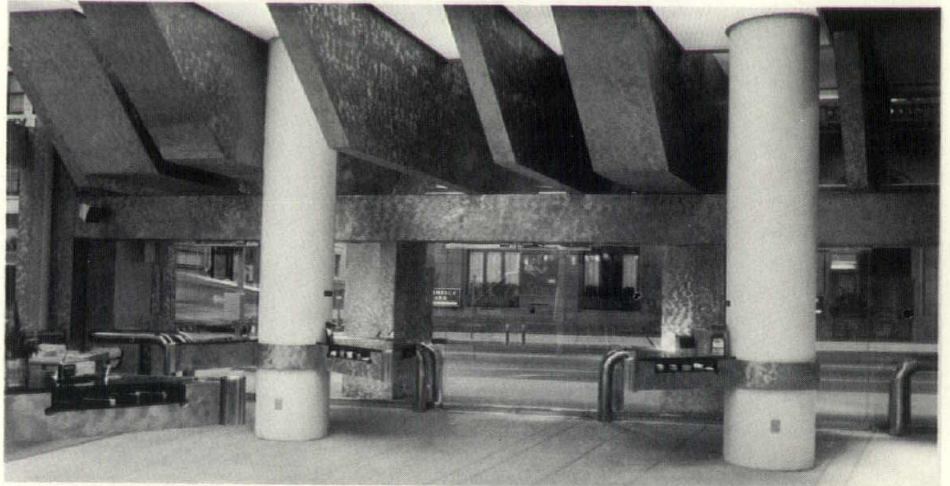


City National Bank West

Kansas City, Mo.

Architect: Seligson/Eggen, Inc.

This expanded facility for City National Bank of Kansas City was designed for a feeling of openness by utilizing strong sculptured highly reflective forms imploding through a glass wall and diverging to a focus at the rear. The open quality of the bank is reinforced by visually extending the surface patterns and spatial elements to the street. The facades are sheathed in textured stainless steel that result in a highly reflective surface with patterns changing with respect to view, reflected light and surfaces in the immediate proximity.



Fairway Office Center

Fairway, Kan.

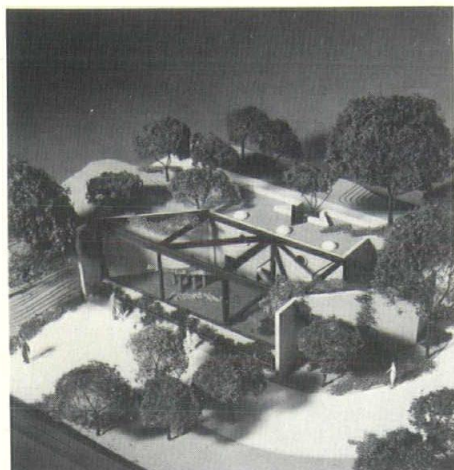
Architect: Peckham-Guyton, Inc.

The first 3-story office complex of an ultimate 13-building development in Fairway, Kansas, has been completed. The development will encompass

800,000 square feet with structured parking for 3,200 cars. It is a joint venture of the J. C. Nichols Co. and Linclay Corp.

Continued on page 14

kansas city area projects ...

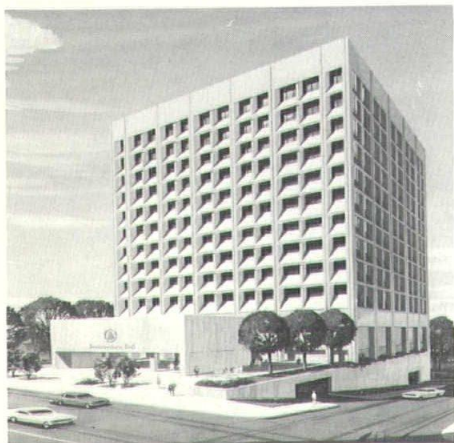


Feline Exhibit, Swope Park Zoo

Kansas City, Mo.

Architect: Linscott-Haylett and Associates

A one building concept that allows individual exhibition of 10 different animals, this structure will be finished this spring in the Kansas City zoo. All of the individual exhibits will be integrated into the site by means of earthen berms. Since the exhibits can be seen from above, the roof will be covered with sod.



Southwestern Bell Regional Office

Kansas City, Mo.

Architect: Kivett and Myers

This new regional office building for Southwestern Bell Telephone Co. will be occupied in 1972. A landscaped plaza forms the base of a 13-floor office tower of 350,000 square feet and covers a 6-level, 675-car parking garage. Estimated cost is \$13 million.



Brush Creek Towers

Brush Creek & Woodland
Kansas City, Mo.

Architect: John Lawrence Daw & Associates

Brush Creek Towers is a "turnkey" 12-story housing project for the elderly, sponsored by the Kansas City, Mo.,

Housing Authority. The all-concrete building, composed of 135 living units, is built around a skylight covered atrium. The main floor is a glass-walled social area encircling the garden atrium. The HVAC system is made up of vertical fan coil units with separate controls in each apartment.



UMKC Chemistry, Biological Science Building

Kansas City, Mo.

Architect: Kivett and Myers

The companion 6-story Kenneth A. Spencer Chemistry Building and Bio-

logical Science Building will open to students at the University of Missouri at Kansas City this year. The buildings contain 174,000 square feet of floor space and cost approximately \$5 million.

HOW MANY SQUARE FEET DO YOU HAVE TO HEAT AND COOL?

Whether it's a home, school, office building, or an industrial plant . . . a versatile gas unit or combination of gas units can do the year-round air conditioning job effectively and economically.

There are "tried-and-true" gas systems designed to use energy wisely . . . built for dependability to hold their efficiency through the years and to operate economically.

If you have plans on the drawing board for a new building, consult with the men from Gas Service. They can help you make practical and sensible decisions regarding the selection of energy.

When it comes to heating and cooling . . . gas helps make the *standard* of living go up while it keeps the cost of living down.



Natural Gas for Home, Business and Industry



st. louis area construction

st. louis building activity
features wide array of projects

Although no major building projects are scheduled for completion in the Greater St. Louis area early in 1972, a wide assortment of office structures, dwelling units, schools and hospitals are scheduled.

A disappointment to downtown developers was the 3-1 voter defeat of a \$20 million convention center. The convention center turn-down also blasted hope for the \$45 million Laclede's Landing project between the Eads and Veterans' bridges. Chances for an April beginning, the deadline originally set by the Board of Aldermen for a beginning, seem extremely remote.

Medical facilities construction will be a major factor in the 1972 St. Louis building scene. Some \$100 million in construction, or in the bid process, already is underway at St. Louis University, St. Anthony's, St. Mary's, Jewish Hospital, St. Joseph in Kirkwood and Barnes Hospital.

No major industrial construction is scheduled in the St. Louis area at this time with the exceptions of Union Electric's \$300 million Rush Island power plant 35 miles south of St. Louis that won't be completed before 1975 or 1976; and its \$400 million plus Labadie Installation on the Missouri River.

Two major downtown structures were completed in 1971 — the \$12 million 500 Broadway Building with Smith and Entzeroth as the architects and the 21-story, \$20 million Equitable Building designed by Hellmuth, Obata and Kassabaum, Inc.

First buildings of the Linclay Corporation's \$300 million, 1,300 Earth City project on the north side of I-70, east of the Missouri River, in northwest St. Louis County should be completed late this year.

In the housing field, work continues on the \$11 million Operation Breakthrough project to develop 464 new housing units in the old Mill Creek Valley area east and West of Laclede Town.

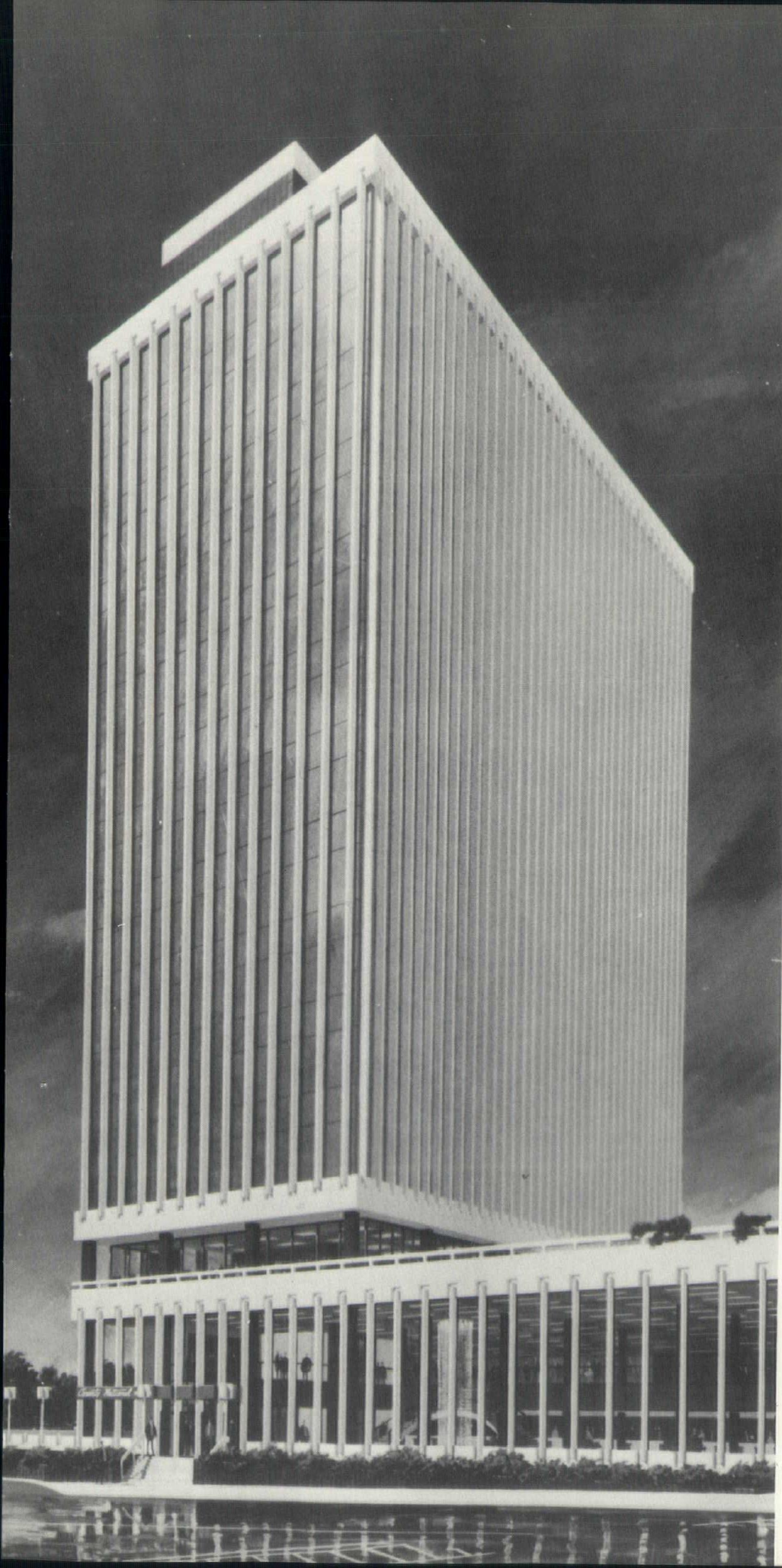
Major building projects initiated in 1971 include the \$13 million Chromalloy building in Clayton and the \$15 million McDonnell headquarters near the airport on which George Vernon Russell & Associates of Los Angeles and St. Louis are the architects. The University Club has announced plans for an early 1972 start on a new \$12 million structure in Richmond Heights.

A new office structure scheduled for a February dedication is Ozark Airlines' \$3 million, 85,000 square foot headquarters at the edge of Lambert Field. Gornet & Shearman were architects-engineers on the project. Ozark also will begin operations soon in its new 2,700 square foot jet engine test cell designed by Kenneth Balls & Associates.

Also near Lambert Field, the Marriott Corp. is expected to open its new 433-room hotel this spring.

Construction has begun on the first phase of the Landing, a 150-acre, \$30 million commercial development at Lake Saint Louis. Architect is Hellmuth, Obata and Kassabaum, Inc.

Continued on page 18



First phase of the St. Louis County National Bank Building, the 15-story office tower, is expected to be finished this month. The new horizontal structure housing public banking facilities and offices as shown in this photo will replace the existing bank building.

st.louis area construction...

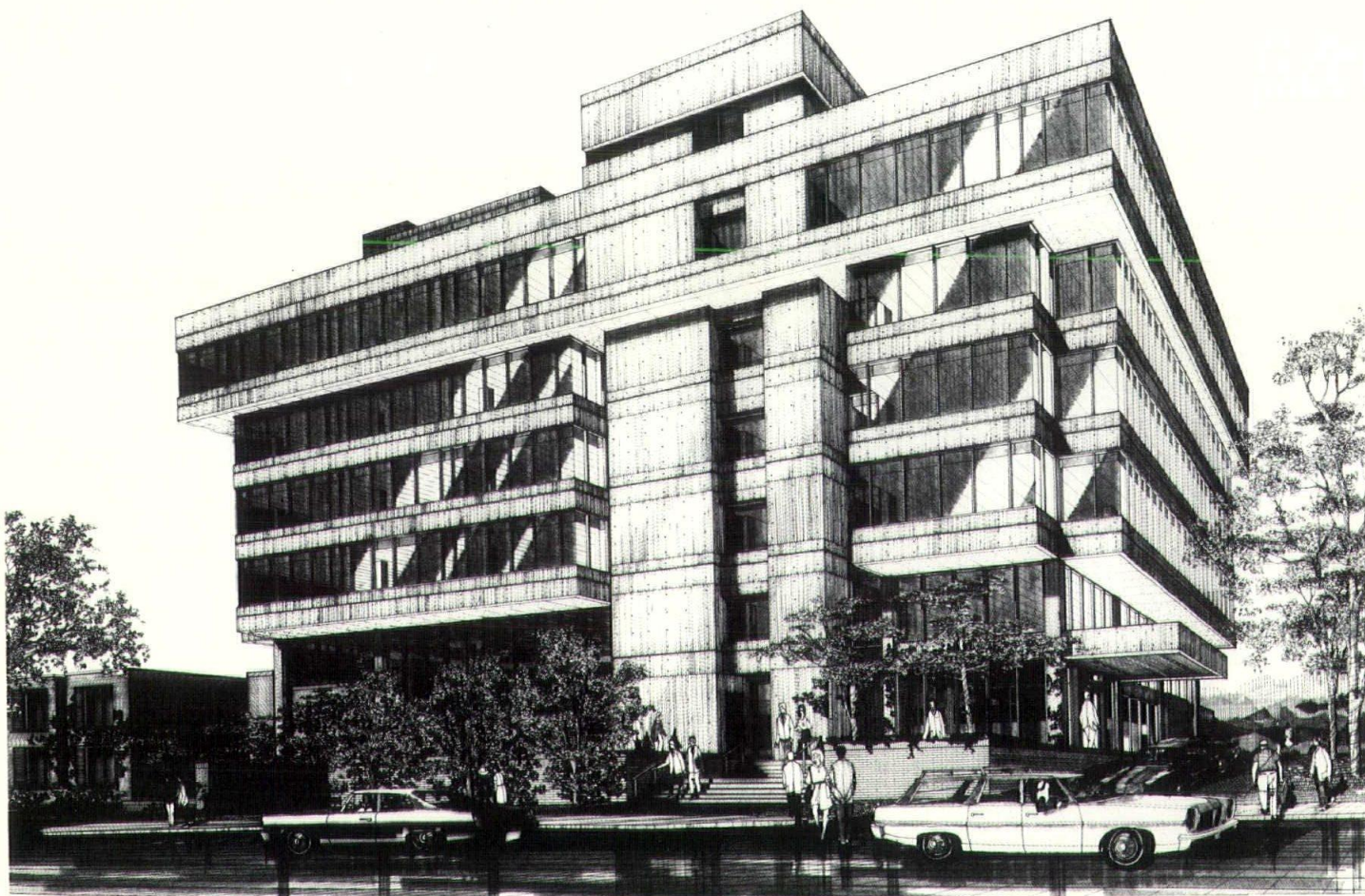
Commercial construction scheduled for early 1972 completion includes the 15-story office tower of the St. Louis County National Bank, a William F. Cann project; a 7-story Landmark office building at Olive Street Road and Bonhomme, Fred S. McNeil and Ralph R. Hohlt the architects; the City Bank Office Building, a 6-story structure at 4625 Lindell designed by Wedemeyer, Cernik and Corrubia, Inc.; a \$5 million J. C. Penney store and auto-

motive center at the River Roads shopping center, designed by Lee A. Daly Co.; a \$1.6 million Quality Motel and restaurant in Sunset Hills, designed by George Berg and Associates; the first office building of Westgate, the 66-acre, \$20 million residential-commercial retail community on Olive street road west of I-244.

The first phase of the Plaza at West Port, a 44-acre, \$30 million commercial and recreational city center at I-244 and Page with

Jerome Samuel Peters serving as architect; the 14-story Santa Anna apartments at 3237 Ashby road in St. Ann with Schwarz and Hennie as architects.

In the institutional building area, projects scheduled for completion in 1972 include the Grandel Medical Building, a \$915,000 project at Lindbergh and Highway 66, designed and engineered by Cassis Associates, Inc.; an East Pavilion addition to Barnes Hospital, a \$19.2 million project with Kenneth Wischmeyer and Associates the architects; the new North Senior High School, a \$5.4 million project designed by Hoffman-Saur at QeeQee road and Willowick.



This is the new City Bank Office Building on which final detail are being completed at 4625 Lindell in St. Louis. The bank will occupy the ground and mezzanine floors.

NOBODY WANTED THEIR \$1,000!

In the April '69 issue of **plan and print** magazine Western Blue Print of Kansas City offered a cool one thousand bucks to any reproductionist who thought he could copy difficult originals better than Western could using the **Opti-Copy*** process. They wanted the offer to be reciprocal, the beneficiary to be a favorite charity.

WESTERN DIDN'T GET A SINGLE TAKER!

Except for owners of new Opti-Copy Camera-Projectors Western didn't exclude ANYONE, ANYPLACE manufacturers, either of cameras or sensitized materials or captive photo departments or lens designers or Doctors of Chemistry or Microfilmists in ANY millimeter size, or any of the thousands of capable artisans who populate the World of Photography in the United States or abroad.

One company, Rapid Blue Print of Los Angeles, came to see what Western Blue was so proud of, and instead of challenging bought an Opti-Copy camera.

**OPTI-COPY, INC. JOINS WESTERN BLUE IN THANKING THE INDUSTRY FOR ITS
SILENT VOTE OF CONFIDENCE!**

Opti-Copy*
®

THE WORLD'S MOST SUPERB CAMERA-PROJECTOR

Manufactured under license from Western Blue Print Co., K.C., Mo. by
OPTI-COPY, INC., 1550 Ten Main Center, Kansas City, Mo. 64105

*Opti-Copy is a registered Trade Mark and Service Mark of Western Blue Print Co., K. C. Mo.

st. louis area projects

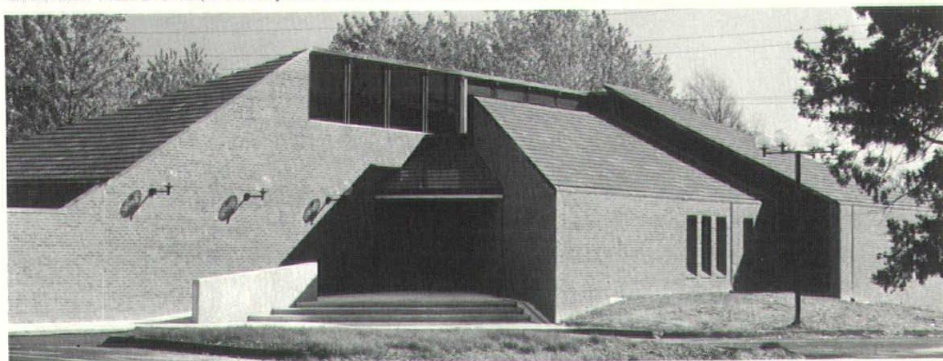


ST. LUKE'S HOSPITAL—WEST

Conway Road and Woods Mill, St. Louis, Mo.

Architects: Kenneth E. Wischmeyer and Partners

A spring start planned with completion scheduled in 1975, this general hospital is designed for 500 beds with 300 beds included in initial program. First unit will have 340,000 square feet and estimated cost of \$22 million.



City Hall, Ellisville, Mo.

Architect: Eugene J. Mackey, III

This new structure in a suburban St. Louis community houses city office, the police department and a meeting room to seat 65 persons in its 3,900 square feet. Since the government function occurs mainly at night, consideration was given to how the forms

would read at that time with light washing the wall and roof surfaces. Inside the inverted roof trusses and wood deck are exposed and highlighted by the incandescent lighting system. Construction cost was \$120,000.



Equitable Life Office Building

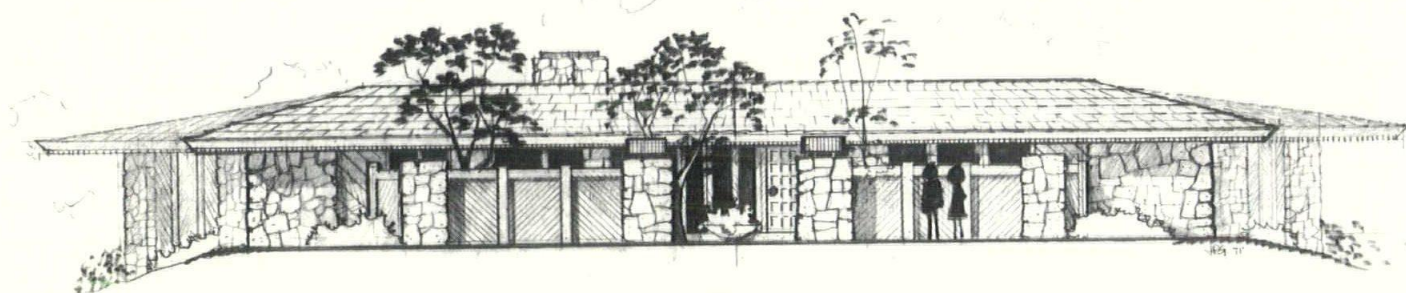
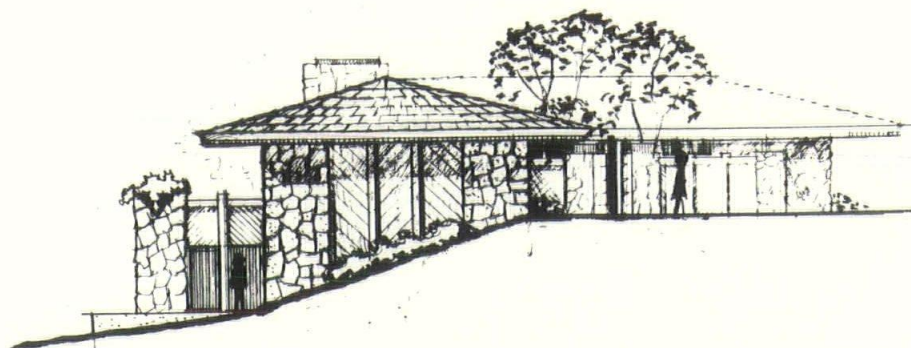
Gateway Mall, St. Louis, Mo.

Architects: Hellmuth, Obata & Kass-
baum, Inc.

Two building elements consist of low rise commercial center and 21-story tower containing about 480,000 square feet of floor area. Building is clad in silver reflective glass which reflects the historic Old Court House which stands on the block to the north.

Continued on page 22

st. louis area projects ...

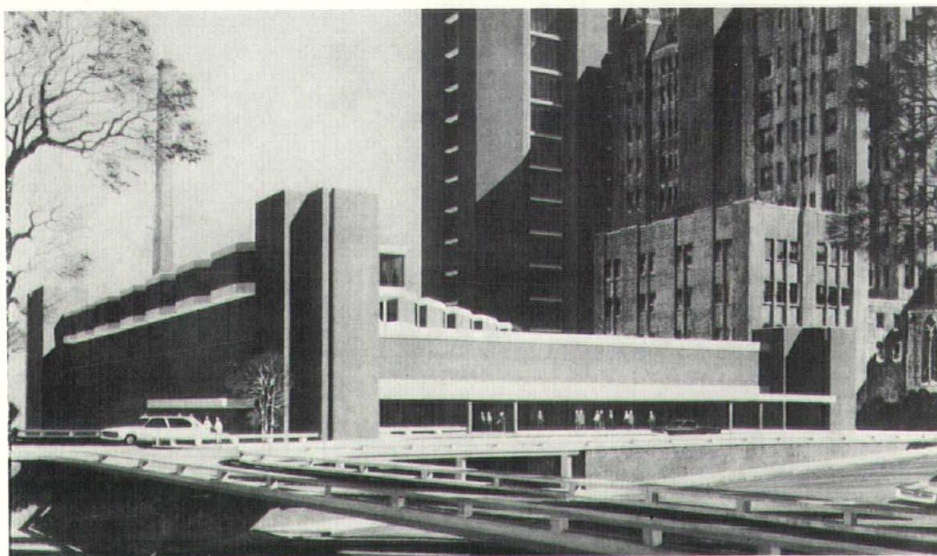


REDMAN HOME

Lake St. Louis, Mo.

Architect: J. Robert Green, AIA

This \$100,000 private residence is scheduled for completion in March.



ST. LOUIS UNIVERSITY MEDICAL CENTER MODERNIZATION

Architects: The Drake Partnership Merlin E. Lickhalter, AIA partner-in-charge
 A new six level building addition to Firmin Desloge Hospital, including 13-level transportation/logistics tower, that will contain about 200,000 square feet. Addition will have triangular-shaped patient care floor with 37 private rooms surrounding core of adjuvant facilities. Five-story base structure below nursing floor will contain mechanical systems and communications center; surgery and anesthesiology; admitting, care/emergency department and diagnostic radiology department. Renovation and new construction to cost estimated \$15.2 million.

If you're building a new building, let's hope you've seen this ad in time.

This concerns part of your new building you'll probably never see.

The insulation.

If your new building ends up like most, it won't have the insulation it should.

That means as long as you own the building you'll be spending more for heating and cooling than you should—as much as two or three times more.

But if the walls haven't gone up yet, there's still hope.

Get to a phone and call us. 471-0060, extension 489.

We'll go over your plans with you and your builder. Together we'll figure out if you need more insulation and what kind. No obligation.

Why are we offering this free service?

Because we think the best way to sell you electricity is to show you how best to use it. Not to stand by and watch you waste it.

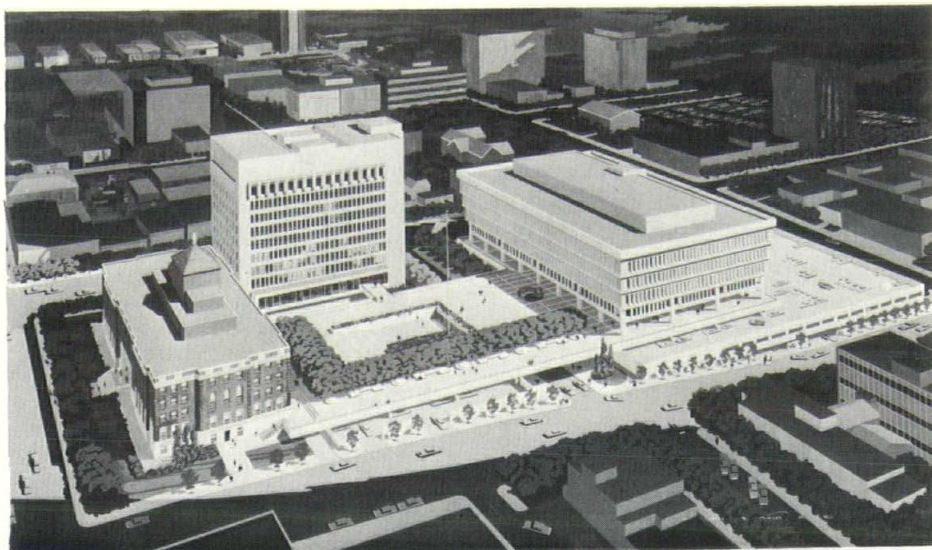


The Power & Light People

Offering a switch for the better



st. louis area projects...



ST. LOUIS COUNTY GOVERNMENT CENTER

Clayton, Mo.

Architects: Murphy, Downey, Wofford & Richman

This new administration and judicial facility for St. Louis County is scheduled for mid year completion. It comprises over 500,000 square feet with parking for 1,400 cars, provision for future expansion and composed about a large pedestrian plaza.



CLAYMONT MEDICAL BUILDING

Claymont Shopping Center, Ballwin, Mo.

Architect: Irvin J. Buxell, Jr. AIA

This 4-story structure will have 16,000 square feet of rentable space for physicians and dentists. Colonial design will harmonize with others in the shopping center. A feature will be a garden patio at the lower level.



DOCTORS OFFICE BUILDING

Lutheran Hospital, Jefferson and Potomac, St. Louis, Mo.

Architects: Froese, Maack and Becker

Scheduled for completion in late summer, this 4-story building is of structural steel frame with brick exterior and cut stone and slate trim. It is designed for future additional eight stories. It will be connected to present hospital complex by an enclosed passageway over Texas Avenue.



Southwestern Bell Administration Building

Kirkwood, Mo.

Architects: Berger, Field, Torno, Hurley Architects, Inc.

This 1972 project will incorporate the Kirkwood district offices and computer center in a 15-story reinforced concrete tower built on a 5'-0" module with a totally integrated ceiling, lighting and mechanical system for total interior planning flexibility. The concrete structural frame is fully exposed as in-situ architectural concrete, with heat reflecting double insulating glass infill.

USONA
Manufacturing Co.

3512 CHOUTEAU AVENUE
ST. LOUIS, MO. 63103

**We can make
your job a
lot easier!**

Life is difficult enough without having to worry whether the quality of the work you specify will be up to par . . .

That's why more and more builders and architects are turning to Usona Manufacturing. We've been serving architects in Missouri for over 60 years creating masterpieces in our foundry.

Let us make your life easier.

Specialists in Creative Manufacturing

Let us make your life easier.

call 314/664-8000

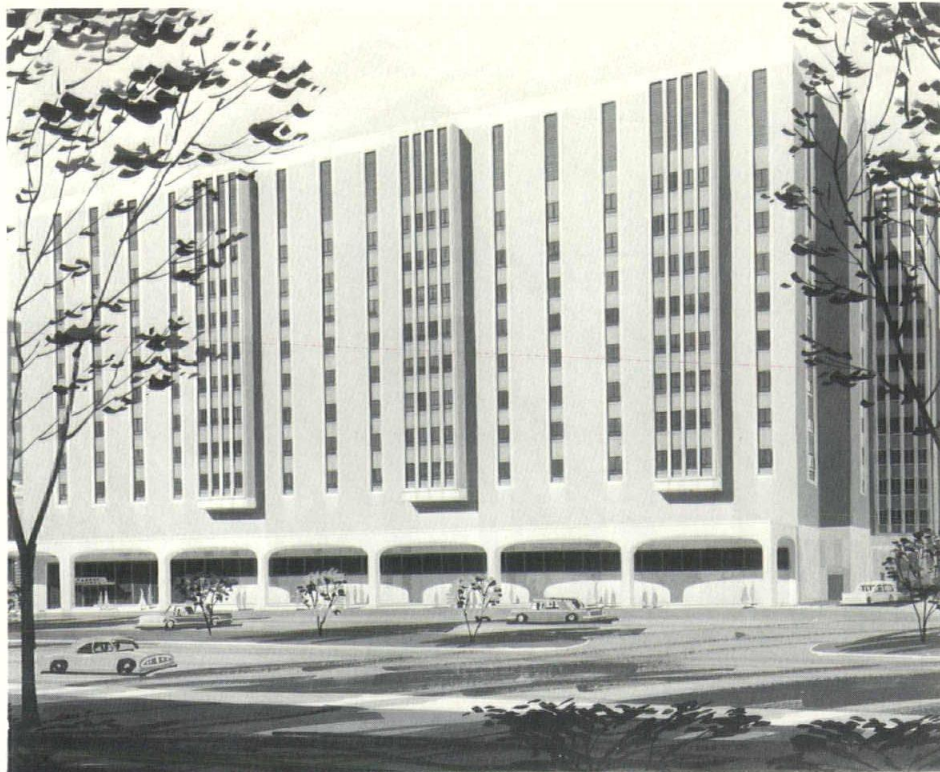
FABRICATORS OF ARCHITECTURAL AND ORNAMENTAL ALUMINUM, BRONZE,
IRON AND STAINLESS STEEL. NON-FERROUS FOUNDRY AND PLATING SHOP



Specialists in Creative Manufacturing

Continued on page 26

st. louis area projects ...



EAST PAVILION, BARNES HOSPITAL

St. Louis, Mo.

Architects: Kenneth E. Wischmeyer and Partners

Scheduled for completion October, 1972, this east wing of Central Pavilion of Barnes Hospital is part of masterplan to include a structure connected to the present maternity hospital on the east and extending some 435 feet to the west to Queeny Tower. Cost approximation \$20 million.

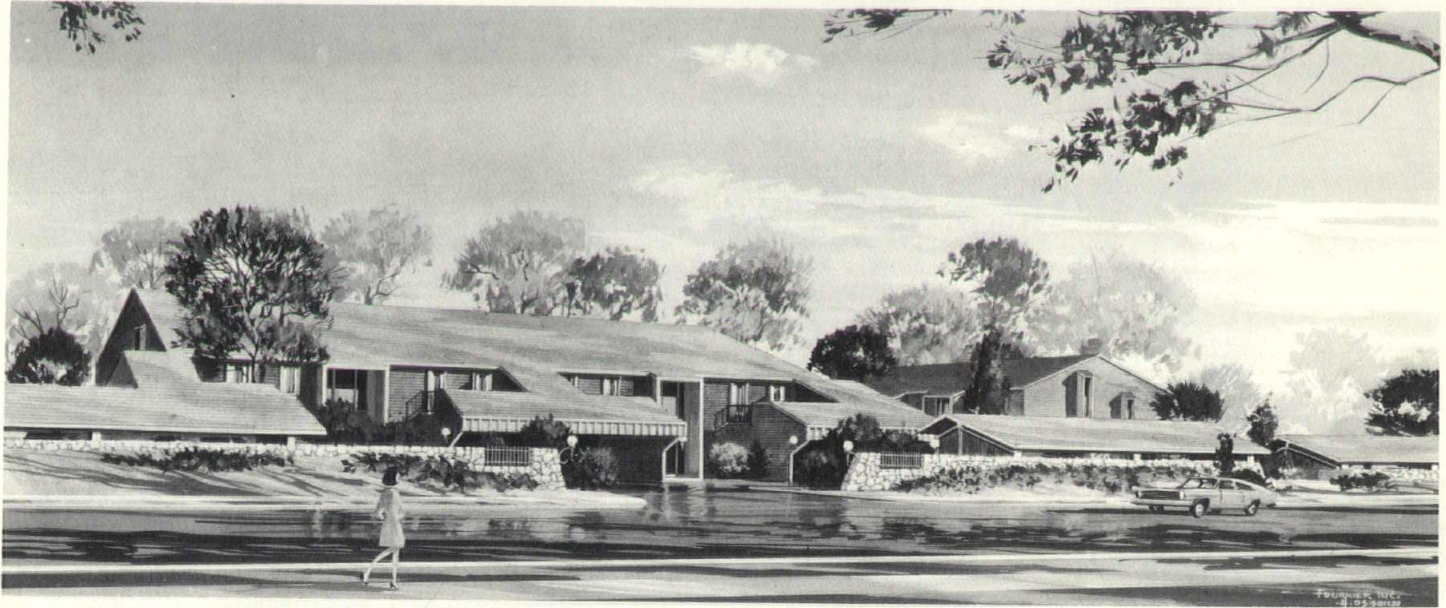


WARREN E. HEARNES CHILDREN & YOUTH CENTER

Fulton, Mo.

Architects: Kromm, Rikimaru and Johansen, Inc.

This group of seven buildings is the first of several centers to be built under guidance of the Division of Mental Health of the Dept. of Public Health & Welfare, State of Missouri. This group is designed for the help and treatment of mentally disturbed children and is nestled together to form a small community. Buildings are joined together by an open landscape mall intended as active pedestrian walkway. At far end of mall are three buildings used for educational purposes. The largest is the adolescent school, the next largest is an activities building, housing a gymnasium and future swimming pool. Smallest building is pre-adolescent school.

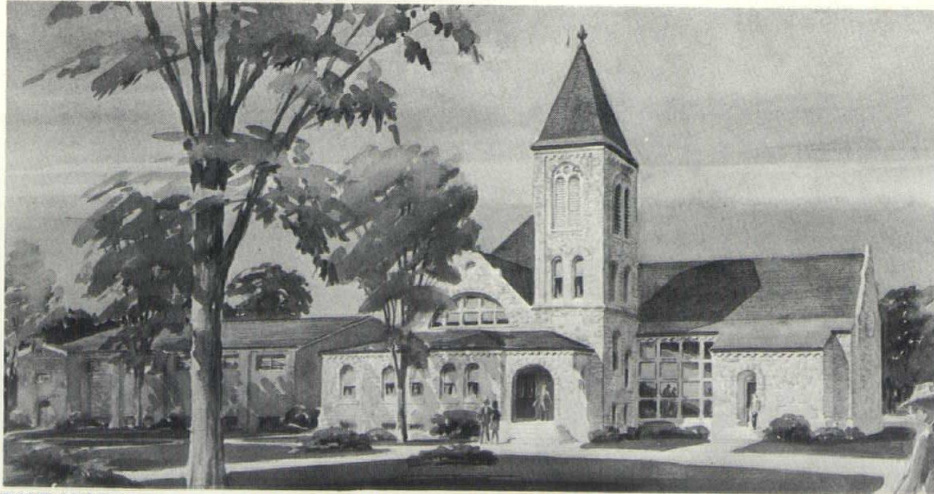


APARTMENT PROJECT FOR BENTON TAYLOR

Geyer Road, Kirkwood, Mo.

Architect: Fournier, Inc.

This 54-apartment complex is planned across from Kirkwood Park. Property is surrounded with metal fence and masonry wall to give an old estate atmosphere, nestled in a wooded residential area.



EXPANSION ST. LUCAS UNITED CHURCH OF CHRIST

11735 Denny Road, St. Louis County, Mo.

Architects: Manske, Dieckmann & Partners

Original structure built in 1905 was enlarged in an eastwardly direction, placing the altar in the east. A present narthex from Denny Road was maintained and a new narthex, which formerly was the chancel area, became the entrance from the parking lot, side and rear. Seating capacity increased from 300 to 600, new \$50,000 Schantz organ being installed. Project cost was \$335,774.

out-state projects

FREE SERVICE for Architects! Engineers!

A complete technical information service, covering all aspects of brick masonry construction is available to you at no cost! Receive our bi-monthly edition of "Brick & Tile" full color brochure! We also arrange for professional engineering liaison on specific projects!

If you are not on our mailing list, call:

**The
BRICK
PEOPLE**



A Regional Office of
Structural Clay Products
Institute Serving Mis-
souri-Kansas-Oklahoma.

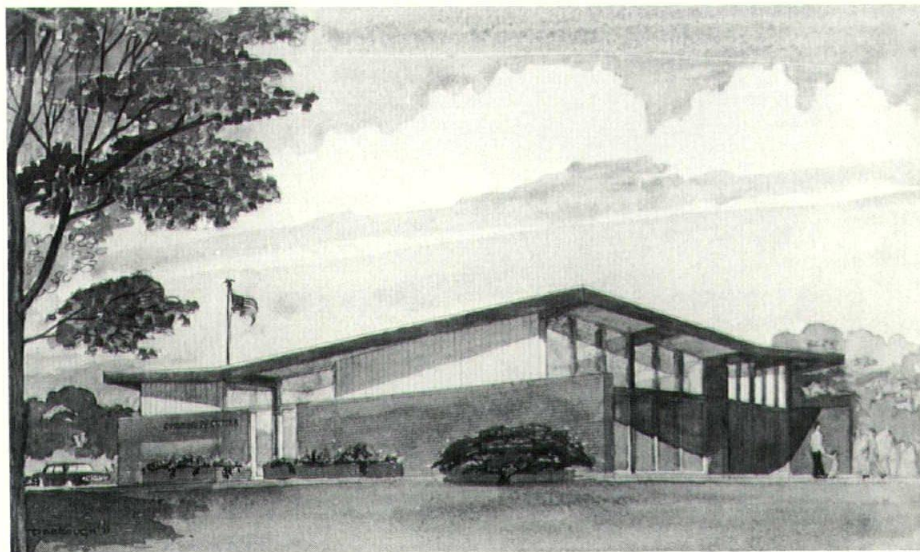
Suite 365
745 State Avenue
Kansas City, Kan. 66101
Telephone: 913-371-7474



**Commerce Bank of Hannibal
Hannibal, Mo.**

Architect: The Ramos Group

This is the new 5,000 square foot home of the Commerce Bank of Hannibal. Located as a free-standing structure on the McMaster Avenue side of the Huck Finn shopping center, the new bank will be housed in a distinctive contemporary building of light brick.

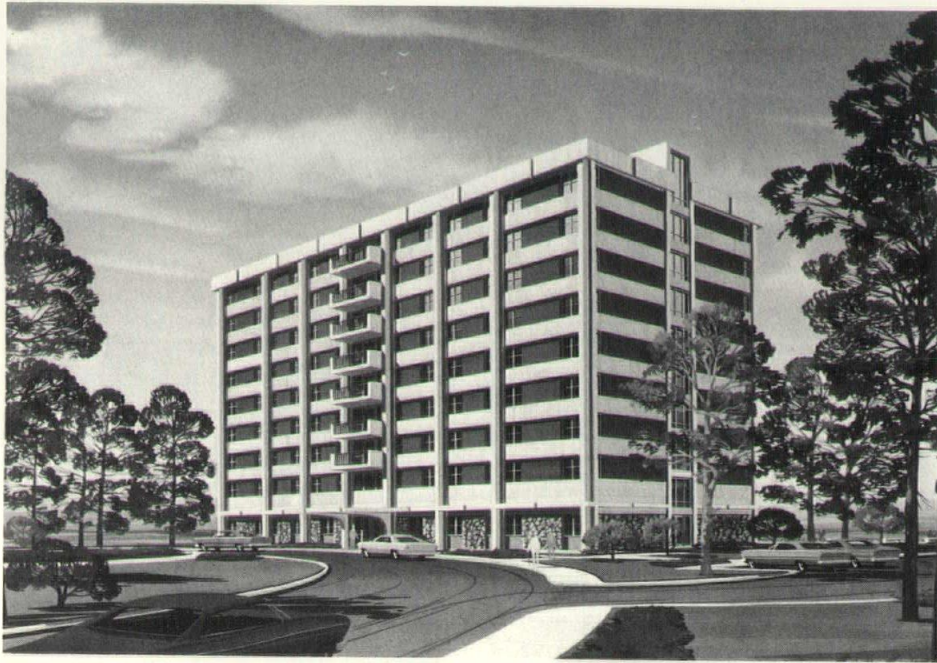


**Community Building, Bear Creek
Public Housing Project, Columbia**

Architects: Chinn, Darrough & Co.

This project, consisting of 100 low-rent dwelling units, mostly duplexes,

currently is under way. Construction cost is \$1,477,000.



**Low rent housing for elderly,
Jefferson City**

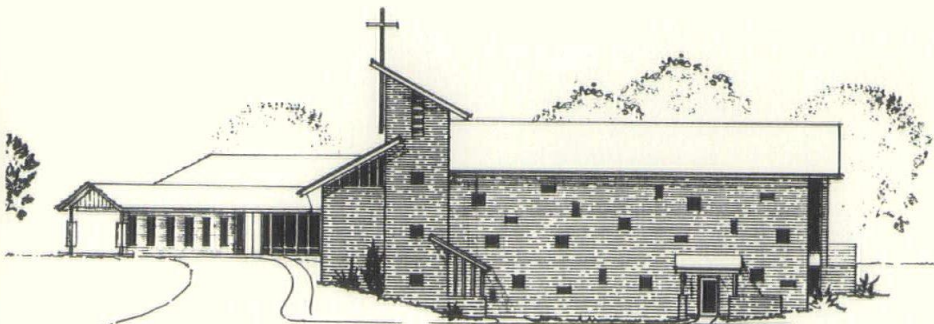
Architects: Pallardy-Evans and Associates

This project consists of 100 apartments that will be completed in March. Structural frame is used as a design element with smooth finish T-columns and spandrel beams of ribbed-pattern concrete by use of form liners. Spandrels and fascia are pre-cast. Balconies and fascia have sand blasted finish. By using structural concrete, it was possible to keep floor to floor dimensions to 8'-6", reducing the height of the building and to eliminate the need for fireproofing.

**St. John's Lutheran Church,
Mexico, Mo.**

Architect: Keith G. Westenhaver

Scheduled for early spring start is this new \$225,000 church including nave for seating 248, parish hall seating 160 at tables, six permanent classrooms, four multi-use classrooms, and offices. Precast and prestressed concrete floor structure and laminated wood arches supporting roof in nave is planned. Nave walls to be face brick on inside and outside. Other walls to be face brick on outside and painted light weight concrete block inside.



RENDERINGS

Color
or
Black and White

JAMES B. FISHER, JR.

2 Graybridge Lane

St. Louis, Mo. 63124

Telephone 314-993-9460

SPECIALTY COATINGS FOR EVERY COMMERCIAL, INSTITUTIONAL AND INDUSTRIAL BUILDING SURFACE

INTERIOR • EXTERIOR • WALLS

• FLOORS • CEILINGS • ROOFS

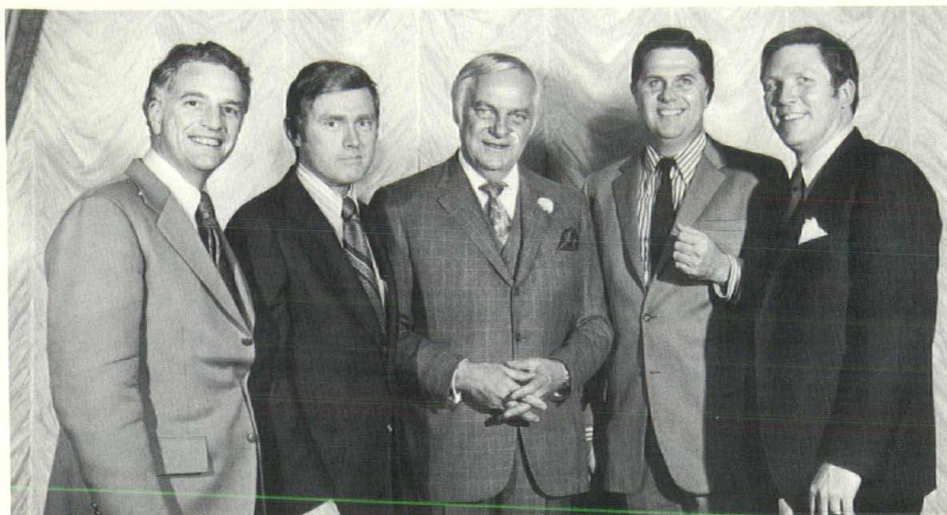
• DECKS

DENCO

Coatings of Kansas

616 North Rogers Road
Olathe, Kansas 66061
Telephone: (913) 782-3330

in the news



Snapped at the New Orleans Grassroots '72 conference were (l to r) Dean W. Graves, George W. Lund, Max O. Urbahn, National A.I.A. president; Dwight C. Horner, past president; and R. Bruce Patty.

kansas city chapter represented by four at new orleans meeting

Four members of the Kansas City chapter attended Grassroots '72 conference recently in New Orleans. They were Dean W. Graves, president elect; George W. Lund, president; Dwight C. Horner, past president; and R. Bruce Patty, director.

This year's agenda included a report of the National Policy Task Force. This report concerned itself with "America at Its Growing Edge". It concluded that:

1. Changes be made in many of the ground rules which presently shape the development of our communities.
2. The nation develop the capacity to build and re-build at neighborhood scale.
3. The federal, state and local governments, together, set the pace and standards for growth policy

registration exam deadline

The 1972 Missouri Registration Examination will be given June 20 through 23 with the deadline for filing applications being March 22. Requests for applications should be sent to the Missouri Board for Architects, Professional Engineers and Land Surveyors, Box 184, Jefferson City, Mo. 65101.

through a special impact program affecting 60 of the nation's urban regions and a third of the nation's expected growth between 1970-2000.

Other areas reviewed and discussed in smaller groupings were public relations, government relations, N Carb, programs and budget for 1972, institute structure, professional practice, employer-employee relations, institute operations, and dues.

The conferees reported that participation in Grassroots provided them with an opportunity to engage in personal dialogue with the Institute's leadership and to become further acquainted with A.I.A. programs. It also provided them with an opportunity to discuss problems and exchange ideas with their counterparts from other sections of the country.

registration refresher course

A concentrated refresher course to prepare candidates for the annual Registration Examination has been scheduled by the School of Architecture and the School of Continuing Education of Washington University, St. Louis, in cooperation with the education committee of the St. Louis Chapter of AIA.

The class will meet on Mondays and Thursdays from 7:30 to 9:30 p.m. March 2 through April 27, in Room 215, Cupples Hall II at Washington University.

The course will include lectures and discussions on the subjects of building equipment, site planning, structural design, history and theory of architecture, architectural design, building construction, and professional administration as pertains to Missouri and other state registration requirements. Fee for the 15-session course is \$80 per person.

disposal seminars set

Disposal of solid and liquid waste will be discussed at two seminars March 13-16 at Washington University, St. Louis, Mo.

"Solid Waste Management: Recovery of Resources," the first seminar, will be held March 13-14. Consulting engineers, process designers and government spokesmen will review current legislation, technology trends and comprehensive approaches to solid waste disposal and resource recovery.

"Wastewater Disposal," the second seminar, will be held March 15-16. Speakers for this program will be experts on secondary and tertiary wastewater treatment, water renovation and reuse and water conservation.

mid missouri installs

New officers of the Mid-Missouri chapter of the American Institute of Architects have been installed.

James T. Darrough, Columbia is the new president, succeeding Seth Evans, Jefferson City. Robert E. Lee, Columbia, is the new vice-president; Roy J. Pallardy, Columbia, was named secretary; and C. Wynn Brady, Columbia, was named secretary. New directors include Edward P. Hodge, Rolla; Dale R. Watson, Camdenton; and Burl R. Sammons, Sedalia.

Past President Evans was presented a plaque for outstanding service to the chapter.

women on aia board

Two women will be represented on the board of directors of The American Institute of Architects this year.

This is a first for the 24,000-member professional society.

Faye DeAvignon, a fifth-year student at the Boston Architectural Center, will serve on the board representing the architectural students who comprise the AIA's Association of Student Chapters.

Mrs. Sarah P. Harkness, a director of the Cambridge firm The Architects Collaborative, was appointed chairman of the Institute's Commission on Building Design. In this capacity she will meet with the board through 1972.

new information service

An information service is being launched by a group of architects, engineers and other practitioners of the building industry in the St. Louis region.

The objective is to create a regional center for the efficient acquisition and dissemination of information and to share the cost of commonly used research and data among the participating members.

The organization will take the form of a non-profit making cooperative. It is planned that during an interim period the research group at Washington University, which initiated the project, will be entrusted with setting up and administering the service. It is expected that once the St. Louis Regional Center is operating, other regions will follow the example and a national network of such centers will evolve.

The services offered to subscribing members include processing of important publications of their interest, an answering service giving quick reference, a clearinghouse of available expertise and information, distribution of a newsletter, and special research projects as commissioned.

The subscription fee is \$10. The answering service for non-subscribers will be available at \$10 per search.

Additional information can be obtained from B.I.R.D. Group, Washington University School of Architecture, Box 1079, St. Louis, Mo.

springfield names officers

Robert W. Marshall is the president for 1972 of the Springfield chapter of A.I.A. Other officers are: Earnest P. Ward, vice-president; Harry G. Rowe, secretary; and Burns H. Derrough, treasurer.

Directors named were Roxey Young, Robert W. Engle, Bill D. Rook, and James W. Matthews, the immediate past president.

The Springfield chapter has 30 corporate members, one member emeri-

tus, two professional associates, five associates, one professional affiliate and two honorary associates.

The chapter has assumed leadership in the formation of a new "Building Industry Council" for the southwest Missouri area. Deac Esterly is chairman.

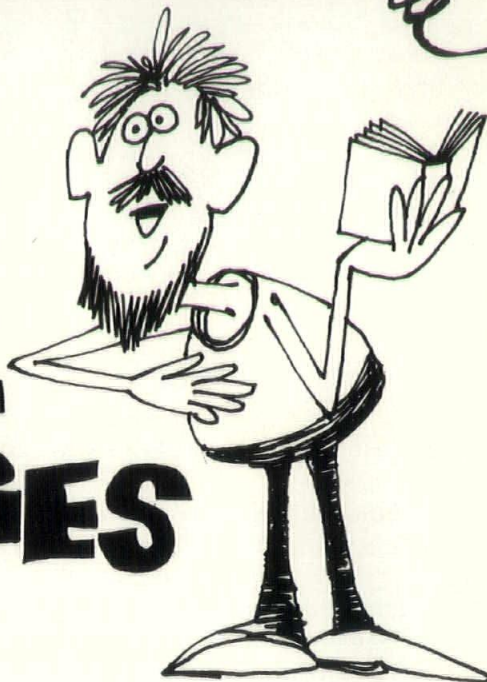
The SPRINGFIELD chapter of A.I.A. is continuing a program instituted last year in which architectural dis-

plays are prepared by member firms and displayed at the Springfield Art Museum for two weeks.

THE SPRINGFIELD City Zoo is benefiting from renovation plans prepared by members of the Springfield A.I.A. chapter. The layout included a landscaped lake, foot bridge, parking and toilet facilities. Ken Kahmann and Phil Smith developed the drawings. Dale Almon and Gary Bourgeois acted as advisers in checking the drawings.

Continued on page 32

3 SHORT STORIES



—with happy endings for architects!

An Architect specified a certain exterior paint, but supplied an incorrect color code. An Established Distributor brought this to his attention, the change was made, paint of the *right* color was delivered.

An Architect ordered certain bricks at the builder's request. The wall was constructed, but no one was satisfied. An Established Distributor applied influence. The wall was re-built at shared expense.

An Architect was in doubt about an exterior material which would meet esthetic requirements and yet fit severe budget limitations. An Established Distributor suggested Colored Portland Cement. The proposal was accepted. Budget and building look fine!

Moral: An Established Distributor causes *happy endings* for you!

AYLWARD PRODUCTS CO.

An Established Distributor

1201 Forest Phone 816-221-6262 Kansas City, Mo. 64106

architect's calendar

February

- 17—Kansas City—Luncheon, Savoy Grill, 9th & Central, Guest Speaker—Basil Honikman, visiting professor at U. of Kan., a member of faculty, Kingston Polytechnic, London, England.
- 21—St. Louis, Armchair Tour, University City Public Library, 8 p.m. Russia Part II, Joseph D. Murphy, A.I.A., in charge of program.

March

- 8—St. Louis—Producers' Council Expo '72, Carpenters' Hall Ballroom.
- 12—St. Louis—Architect's Sunday, Storz Instrument Company.
- 13-14—Washington, D.C.—AIA/CEC Public Affairs Conference, Statler Hilton Hotel.
- 22—Kansas City—American Wood Council Seminar
- 23—St. Louis, Armchair Tour, University City Public Library, 8 p.m. Missouri's Heritage, Gerhardt Kramer, A.I.A., in charge of program.
- 28—St. Louis Chapter Meeting.

April

- 4—Kansas City—Joint meeting sponsored by Kansas City Chapter and International Relations Council, and Penn Valley Community College. Guest speaker is Walter Bor, London, England, leading authority on urban design.

May

- 7-10—National A.I.A. Convention, Houston, Tex.



Officers of the Memphis, Tenn., chapter of AIA recently participated in an Architect's Sunday tour in St. Louis. Here Robert Lee Hall (center) president of the Memphis chapter, is presented with a miniature of the Gateway Arch by Ivan C. Parker, director of U.S. National Park Services in St. Louis. Others taking part in the presentation were (left to right) Chester E. Roemer, president of the St. Louis chapter of AIA; Betty Lou Custer, originator and director of the Sunday tours; Phil Moss, coordinator of Architects' Sunday tours that will start in Memphis in May; and Charles R. Buckley, director of the St. Louis Art Museum.

st. louis architects' sunday tours to visit different buildings in '72

A schedule of Sunday tours that will include 23 different buildings or developments designed by 16 member firms of AIA has been scheduled by the St. Louis chapter of AIA for 1972.

Each month the type of building varies to include a variety of structures located in St. Louis and St. Louis County. The designing architects and members of the firm conduct tours of the buildings from 2 to 5 p.m. No tickets or reservations are necessary for the building tours.

A special bus tour has been planned for April when Architects' Sunday goes to St. Genevieve.

Architects' Sunday is a public service that began in January, 1970, to enable visitation to contemporary and restored historical structures which might not be open to the public. Betty Lou Custer, AIA originator of the series, continues as coordinator. Chester E. Roemer, AIA, is president of the St. Louis chapter.

Other visits scheduled during 1972 include:

March 12—Storz Instrument Co., 3365 Tree Court Industrial Blvd., St. Louis County. Architects: Berger-Field-Torno-Hurley, Inc.

April 9—Architects' Sunday Goes to Ste. Genevieve, Bus tour 10 a.m. to 6 p.m., includes luncheon. Architect-in-charge — Gerhardt Kramer FAIA. Reservations must be made through St. Louis AIA office.

May 14—Progress West Business & Industrial Park, including Progress West Center. Architects: Peckham-Guyton, Inc.

June 11—John S. Lehmann Building, 2315 Tower Grove in Missouri Botanical Garden. Architects: Hellmuth, Obata and Kassabaum, Inc. Climatron, 2315 Tower Grove Avenue. Architects: Murphy and Mackey (now Murphy, Downey, Wofford and Richman)

Continued on page 34

obituaries

Angus McCallum

Angus McCallum, one of Kansas City's leading architects, died November 30 after a short illness.

Following World War II service with a bomb disposal unit, Mr. McCallum joined Kivett & Myers in Kansas City with the firm being known as Kivett & Myers & McCallum. He founded Angus McCallum & Associates in 1961.

Elected a Fellow of the AIA in 1966, Mr. McCallum was past president of the Kansas City chapter of the AIA. He was a member of the building code committee, Kansas City Chamber of Commerce; the advisory committee, College of Architecture, Kansas State University; the technical advisory committee, Metropolitan Planning Commission-Kansas City Region and the Mayor's Municipal Services Commission.

William R. Bovard, 85

William R. Bovard, 85, a lifelong resident of Kansas City, died November 8.

He was a charter member of the Missouri Association of Registered Architects and member-emeritus of the Kansas City Chapter of the American Institute of Architects.

Sigmund H. Sieben, 83

Sigmund H. Sieben, 83, of Kansas City, died October 9.

He was head of the architectural firm of Smith, Raym and Lovett from 1947-58. He was instrumental in designing the Kansas City Athletic Club and the Unity Temple, 707 W. 47th, Kansas City. He had designed many of the original buildings at the School of the Ozarks.

Luther O. Willis, 76

Luther Orville Willis, 76, retired as an architect in 1968, died December 27 at a Kansas City nursing home.

Mr. Willis specialized in religious, residential and bank buildings. He was past president of the Kansas City chapter of the American Institute of Architects and the Missouri Association of Registered Architects.



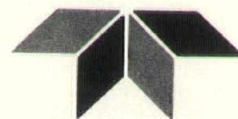
SHIRLEY SAYS:

We're saving architects money with our big 1860 Xerox. It makes one-half scale blueprints possible and cuts costs as much as 60%.

You'll like our Lane Service, too. Best pick-up and delivery anywhere!

Shirley

LANE BLUEPRINT



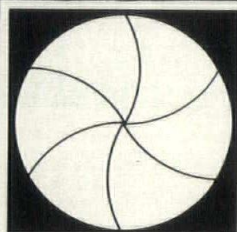
A TELEDYNE COMPANY

"THE MOST COMPLETE REPRODUCTION FACILITY IN KANSAS CITY"

900 Baltimore Avenue

(816) 221-2225

Kansas City, Mo. 64105



paul s. kivett / architectural photography

(913) 381-1118 / 8915 Maple Drive

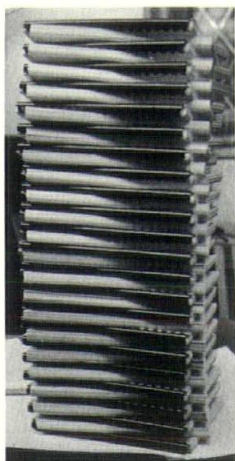
Overland Park / Kansas 66212

City National Bank West
Kansas City, Missouri

ARCHITECTS: Seligson and Eggen



SPECIFICATION PRINTING . . .



Imagine getting 30 sets of 160 pages each, with printed covers and binding, for only \$133.70! Our system of specification printing is unique. For more information and a complete price list, write or call . . . 531-7894

YE PRINT SHOPPE

3014 McGee Trafficway
Kansas City, Mo. 64108

GYPSUM ROOF DECKS

2 Hour Fire Ratings
Low Cost
Lower Insurance Rates
Slope to Drain Systems
Diaphragm Design
Fast Construction
Thermal Insulation
DONUTS (day old)

THE *Western*
FIREPROOFING CO

SUITE 707, TEN MAIN CENTER
KANSAS CITY, MISSOURI 64105
474-8787

news...

July 9—Pierre Laclede Center, 7701 and 7733 Forsyth Blvd., Clayton, Mo. Architects: Smith & Entzeroth, Inc. Missouri Savings Association, 10 N. Hanley Road, Clayton. Architects: Smith & Entzeroth, Inc.

August 13—Florissant Valley Community College, 3400 Pershall Road, Ferguson, Mo. Architects: Kenneth E. Wischmeyer and Partners.

September 10—Heat and Lighting Sciences Building, Emerson Electric Co., 8100 W. Florissant. Architects: Hellmuth, Obata and Kassabaum, Inc. Florissant Youth and Civic Center, Parker and Waterford Roads. Architects: Hastings & Chivetta.

October 8—Six residences in Ladue area: Mr. & Mrs. Carter B. Lewis, 26 Rolling Rock Court. Architect: Harris Armstrong, FAIA; Mr. and Mrs. Robert H. Orchard, 27 Huntleigh Woods. Architects: Anselevicius/Rupe Associates, George Dickie, associate architect; Mr. and Mrs. John Brouk, 9915 Litzsinger Road. Architects: Fournier, Inc.; Mr. and Mrs. Thomas E. Phelps, 61 Overhills Drive. Architect: Ralph Cole Hall; Mr. and Mrs. William L. Desloge, 22 Foreway Drive. Architect: Ralph Cole Hall; and Mrs. Harrison I. Barnes, 10066 Carter Manor Drive. Architect: Ralph Cole Hall.

November 12—St. Louis County Government Center, 7900 Forsyth Blvd., Clayton, Mo. Architects: Murphy, Downey, Wofford and Richman, Inc.

December 10—Concordia Seminary Library, 801 DeMun Avenue, Clayton, Mo. Architects: Froese, Maack and Becker. Fontbonne College Library, 6800 Wydown Blvd., Clayton, Mo. Architects: Pistrui & Conrad.

establishes caracas office

An office in Caracas, Venezuela, has been established by Chris Ramos, president of the Ramos Group/architects, Kansas City, Mo. The firm name is



Carbonell y Ramos, arquitectos, C.A. Principals are Diego Carbonell, Venezuelan architect, and Mr. Ramos. The newly-formed company has an architectural and technical staff along with clerical personnel and engineering consultants.

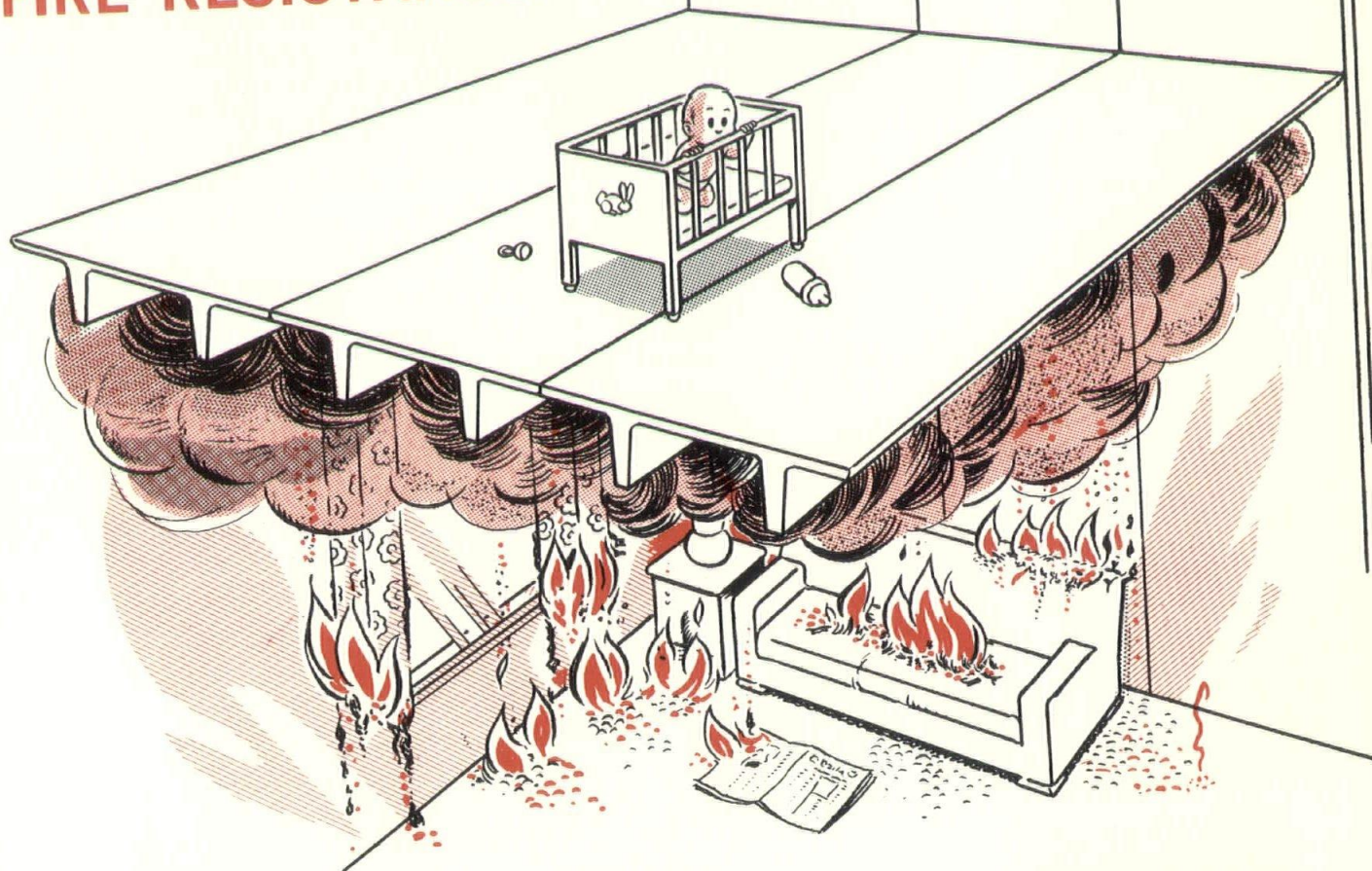
The first Venezuelan project of the new firm is the Centro Cuidad Commercial Tamanaco, 1,500,000 square foot urban complex, located on a 20-acre site in the heart of Caracas. Financed by a group of Venezuelan investors, the project contains a shopping center, office/entertainment/theater area, as well as a 400-unit motor hotel.

CRAFTSMAN HONORED BY SPRINGFIELD AIA



Presentation of a first "Craftsman Award" by the Springfield chapter of AIA was made recently by retiring President Jim Mathews (right) to Leonard Hill, lathing superintendent for Dugger Plastering Co. The Springfield chapter's Design and Awards Committee headed by Paul Rich, selected Mr. Hill from a list of nine craftsmen candidates. Mr. Hill, a third generation lather who has practiced his craft for 22 years, also is secretary of the Lathers Union, Local 203 in Springfield.

WANT TO TEST PRESTRESSED PRECAST CONCRETE'S FIRE RESISTANCE?



we hope you never have to, but . . .

...even in a building constructed with Wilson precast prestressed concrete Double Tee floors, ceilings and precast walls, a fire can be caused by a careless tenant in the apartment or office downstairs.

That's when you'll really appreciate living or working in a Wilson precast prestressed concrete building.

Wilson Concrete Double Tee slabs have been put to the test by Underwriter's Laboratories "fire bugs", who created flames, heat and smoke you wouldn't believe.

The result? Two and three hour fire resistance insurance ratings.

This means more than just lower insurance costs. It means ample time for you and your family and friends to get out safely.

Isn't this reason enough for you to look for an apartment or office in a Wilson Concrete fire safe building?



IDEAS . . . to stir your imagination

If a building is in your plans for the future, we'd like to share our FREE IDEA FILE with you. Shown are ways in which imaginative architects have used precast prestressed concrete components to create beautiful buildings. Perhaps you can adapt some of these ideas to your own needs.

WILSON CONCRETE CO., P.O. Box 10305, St. Louis, Mo.
Gentlemen: I'd like my FREE copy of your IDEA FILE.

Name _____
Firm _____
Address _____ State _____ Zip _____
City _____

A Profile of Cook Personalized Service

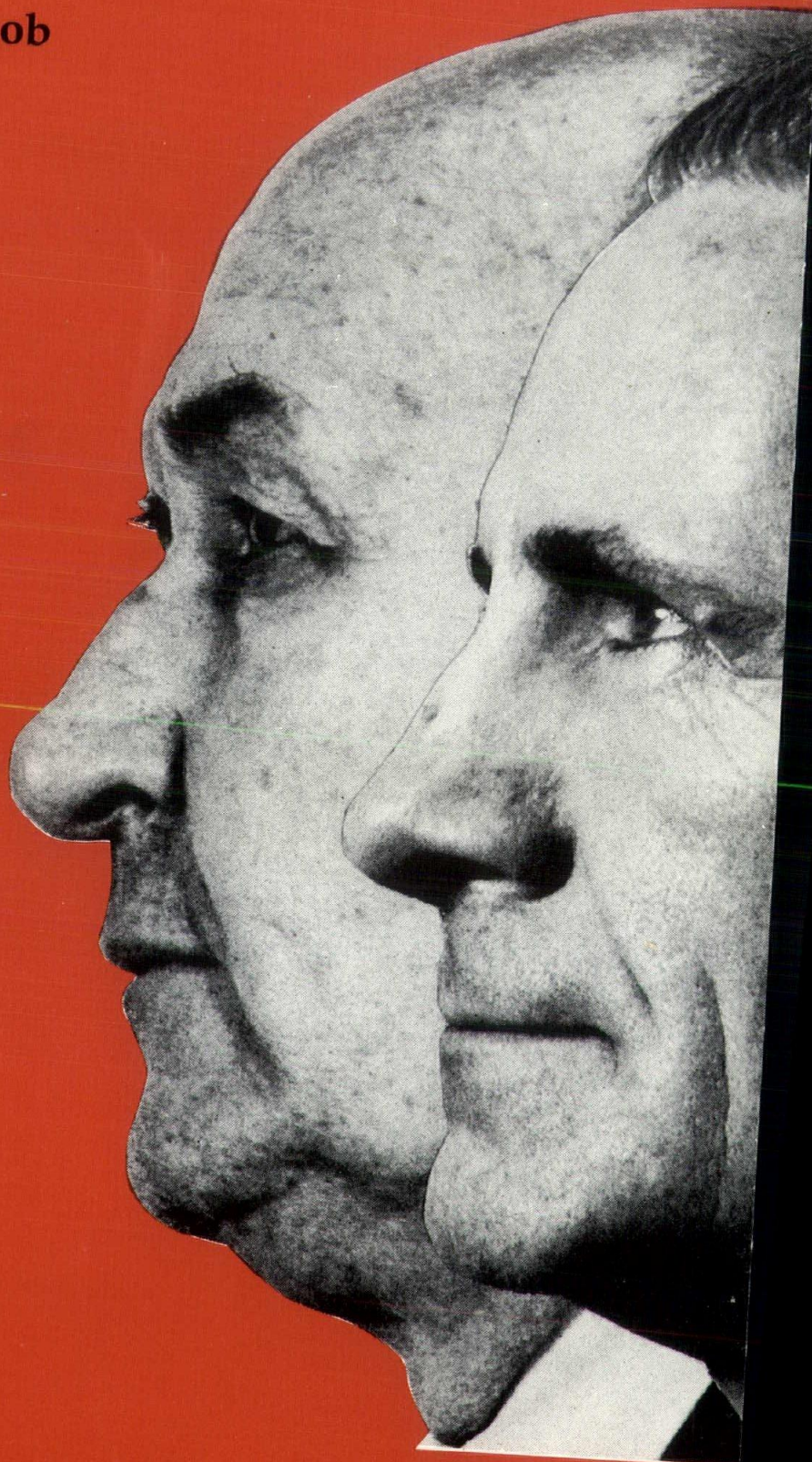
Two work together on each job to help you get the best service possible.

One works with the contractor and the other with the architect or specifier for the best performance possible. One sees to it that the order arrives on time and according to specifications, and the other sees that the specifications are met exactly.

Such was the case when Cook Paint was selected as a paint supplier for TWA's Breech Hostess Training Academy, Overland Park, Kansas, the only facility of its kind in the airline industry.

John Kirby (the profile at left) and Jim Thoennes (at right) gave PERSONALIZED SERVICE to TWA. John worked with the contractor while Jim served the architect to give the best service.

This is one example of how Cook offers PERSONALIZED SERVICE. If you want to know more about Cook service, write today to Dick Warner, Director of Architectural Sales, at...



COOK PAINT AND VARNISH COMPANY

P.O. Box 389

Kansas City, Missouri 64141

or Phone: 816-471-4800