

PLACES

total community
design for man

PEO
PLA

total cor
design

total community
design for man

PEOPLE
PLACES

total community
design for man

total community
design for man

PEO
PLA

total cor
design

PEOPLE PLACES

total community
design for man

total community
design for man

PLE CES

PEOPLE
PLACES

total community

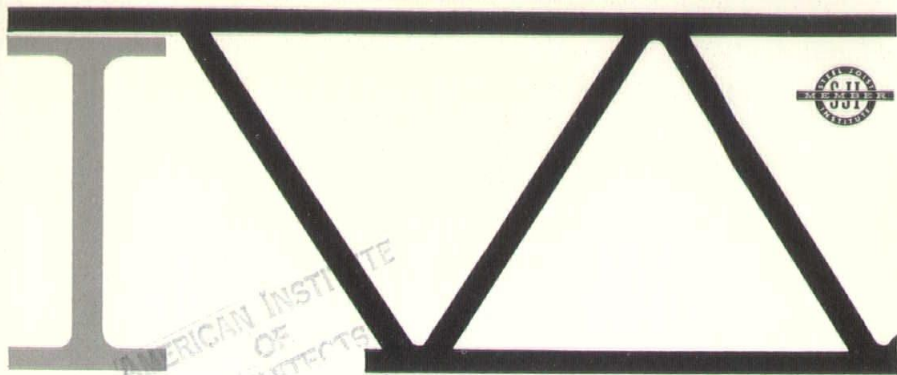
WE SERVE YOU . . . THE ARCHITECT

AS PLANNERS AND DESIGNERS . . . AND AS A PRIMARY SOURCE OF CONTEMPORARY

AND TRADITIONAL FURNISHINGS FOR BUSINESS, INSTITUTIONS AND HOME . . .

Kivett and Myers, Architects
Student Living Center
Kansas City Art Institute
John B. Miller, Interior Consultant

modern center



AMERICAN INSTITUTE
OF
ARCHITECTS
NOV 2 1964
LIBRARY

Get the Sheffield Joist Story at the Central States Regional AIA Convention

- Ask for your up-to-date Sheffield Joist Catalog
- See what is coming soon in Sheffield Joists
- Get data on H-Series, high strength Joists

See the Sheffield Open Web Steel Joist exhibit at your convention in Kansas City. All Sheffield Joists meet the widely accepted specifications of the Steel Joist Institute.

Sheffield Joists are a product of **Armco Steel Corporation**, Steel Division, 7000 Roberts Street, Kansas City, Missouri 64125.

ARMCO STEEL



Who says factories have to be UGLY?



We say they DON'T!
And we prove it
every chance we

get. According to personnel directors, "Employees enjoy working in pleasing, efficient surroundings... they work better, stay on the job longer, and, we get the "cream" of the labor market as a result!"

Extravagant? Not at all! Beauty can be engineered into plant layouts most economically. In production areas, offices, salesrooms... appearance is important to workers, executives and visitors alike.

In the above view of ELECTRO DYNAMICS CORP. (Earl D. Clark, Jr., Architect—Collins Construction Co., General Contractors), the partitions are of Masonite ROYALCOTE Honeytone Cherry, one of many woodgrains and colors available. Aluminum and glass perform their function beautifully.



Visit our modern, new plant, see our design and production facilities... and how we have utilized modern, new materials to create pleasant and productive working surroundings.

MOVABLE PARTITIONS ARE OUR ONLY BUSINESS
Your assurance of Specialized Service

GLEN

PHONE
WA 3-9705

®
"QUICK-CHANGE"
PARTITIONS

BRIEN

4905 LISTER
KANSAS CITY, MO.



SKYLINES

and
MIDWEST ARCHITECT

Vol. 14 No. 10

October 1964

TABLE OF CONTENTS

	Page
Director's Page	5
Chapter Fellows Honored	7
Membership Changes	12
Program: Central States Region, AIA, Conference	15
News Notes	44

Cover design by R. M. League,
League & Associates

EDITOR

Robin League

EDITORIAL BOARD

Chris P. Ramos, Chairman
Elizabeth Brooker
Frederick P. Chael
Richard E. Gyllenborg

Opinions expressed herein are those of the editor or contributors and the appearance of products or services, names or pictures in either advertising or editorial copy does not necessarily constitute endorsement of the product by the Kansas City Chapter of The American Institute of Architects.

Advertising in SKYLINES is subject to the approval of the Executive Committee of the Kansas City Chapter, A. I. A.

Subscription: one year \$3.00, three years \$8.00, single issue 50 cents. Special roster issue \$1.50. Copyright 1964 by the Kansas City Chapter, A. I. A.

A.I.A.



KANSAS CITY CHAPTER

FOUNDED 1890

CHAPTER OFFICE

604 Davidson Building
Kansas City Mo, 64108
Telephone: Victor 2-9737

EXECUTIVE SECRETARY

R.M. LEAGUE

OFFICERS

PRESIDENT

Louis H. Geis
Geis-Hunter-Ramos
704 Davidson Building
Kansas City, Missouri

VICE PRESIDENT

Gene E. Lefebvre
Monroe & Lefebvre
818 Grand Avenue
Kansas City, Missouri

SECRETARY

Frank H. Fisher
Marshall & Brown
1016 Baltimore Avenue
Kansas City, Missouri

TREASURER

Herbert E. Duncan, Jr.
Herbert Duncan & Assoc.
800 W. 47th Street
Kansas City, Missouri

DIRECTORS

1963-1965

Dwight C. Horner
Horner & Horner
1401 Fairfax Trkwy.
Kansas City, Kansas

1962-1964

Mark S. Sharp
Neville, Sharp & Simon
25 East 12th Street
Kansas City, Missouri

1964-1966

John E. Jameson
Voskamp & Slezak
18 East 11th Street
Kansas City, Missouri

1964-1966

Richard P. Stahl
Richard P. Stahl, Architect
1465 Glenstone Drive
Springfield, Missouri

*Angus McCallum
Director
Central States Region
American Institute of Architects*



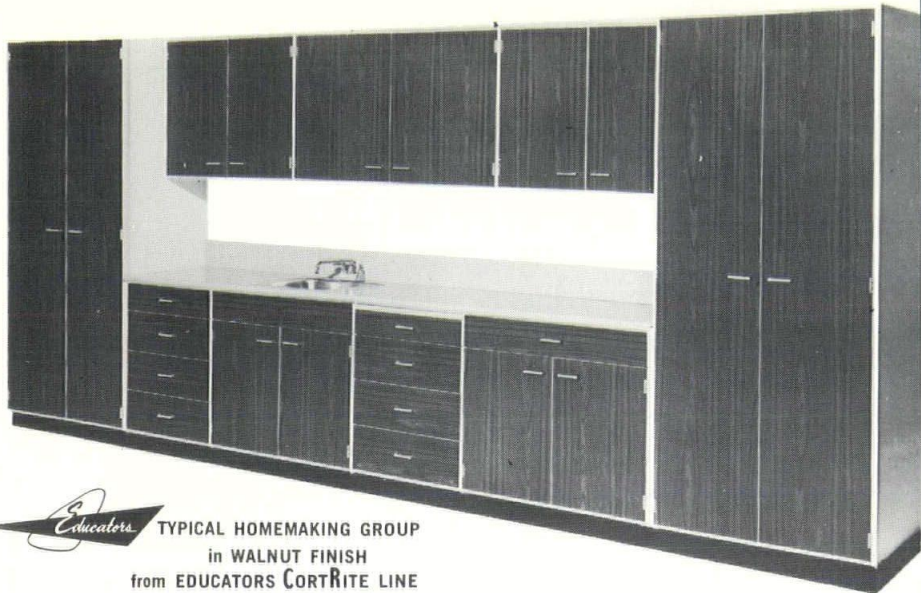
Director's Page

The keynote and program of the 1964 Central States Conference asks a pointed question of every architect in the five state area.....“What are your opportunities, your potential and your obligations in helping to guide the development of your community?”

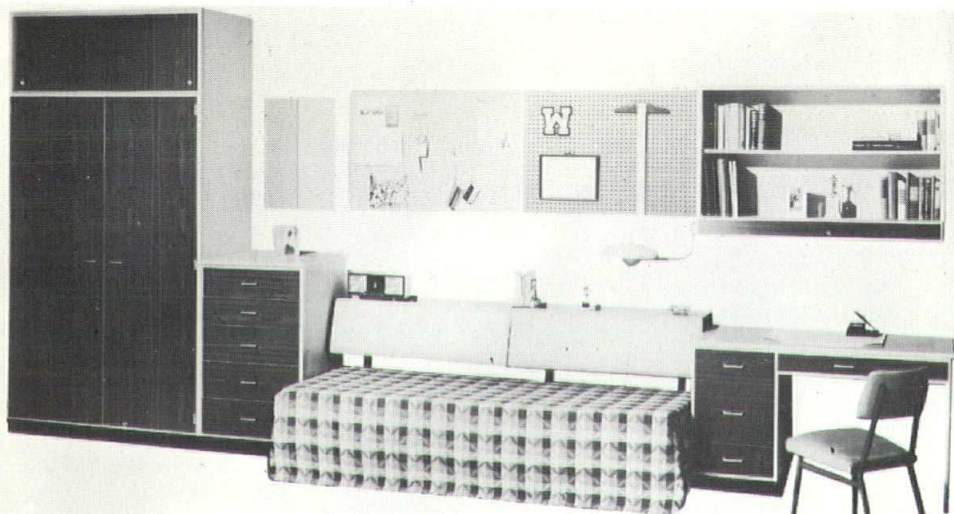
Where each of us.....student, recent graduate, or seasoned practitioner can fit into the picture....how we can more directly profit ourselves, our profession, and our neighbors as well, by understanding more clearly how each structure we design can better fit into the pattern of our community.....these are to be the themes explored by our Conference program.

Year by year the American Institute of Architects has grown....in membership....in service to that membership.....and in the regard of the public whom we all serve. No small part of this growth and service and regard have been the accomplishment of the architects of this Region....the 1964 Conference promises to continue the pattern. Activities of interest to the wives.....social events.....and every aspect of the program have been planned to make this Conference effective, productive.....and fun!

Hugh Stubbins, your newly elected vice-president....the Kansas City Chapter....and your Director, all urge you to come.....and look forward to enjoying these few days with you!



TYPICAL HOMEMAKING GROUP
in WALNUT FINISH
from EDUCATORS CORTRITE LINE



CAMPUS Line

Illustration showing typical student room arrangement
with Educators CAMPUS Line furniture for residence halls.
All items shown are included in the CAMPUS Line.



Arnold-Newbanks INCORPORATED

Building Products and School Equipment

TELEPHONE
ADAMS 6-4100

27 SOUTHWEST BLVD.
KANSAS CITY 3, KANS.

KANSAS CITY CHAPTER HONORS ITS FELLOWS



Chapter secretary, Frank Fisher, adds his congratulations to those of 150 guests attending the reception given by the chapter to honor its Fellows. Left to right, Ralph E. Myers, FAIA, (Mrs. Myers is standing behind Fisher), John T. Murphy, FAIA, Mrs. Murphy, I. Lloyd Roark, FAIA, Mrs. Roark, Arthur S. Keene (seated), FAIA, and President Geis, who presided during the program.

(Continued on Page 49)

for **FAST, PERSONALIZED SERVICE**
on:

- **BLUEPRINTS**
- **WHITEPRINTS**
- **GLOSSY PRINTS**
- **PHOTOSTATS**
- **OFFSET PRINTS**
- **105-35mm MICROFILM**
- **PHOTOGRAPHIC BLOW-UPS, REDUCTIONS**

**The Most Complete
Reproduction
Facilities in
Kansas City**

FOR PICKUP AND DELIVERY, CALL

LANE BLUEPRINT COMPANY

900 BALTIMORE AVE.

BA 1-2225



ARCHITECTS

CALL

Surface Paints

"Distributors Since 1884"

"Color Consultants to the Profession"

HAL SURFACE, JR.

B. C. WRIGHT



J. E. DYCHE

MARTIN

SENOUR

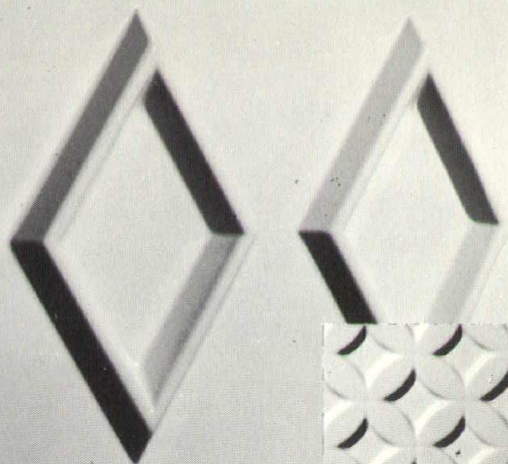
PAINTS

C. C. STUART

1737 Oak St., Kansas City, Mo.
Downtown Store & Warehouse



Harrison 1-0455



3rd

THE DIMENSION IS HERE!

PAX-Panel® announces true 3-dimensional panels after years of development, we now bring you panels which are formed and fabricated by the PAX-Panel® Division, Frank Paxton Lumber Co., of U.S. Rubber Royalite® overlayed with Dupont Tedlar®. This exciting development allows **You** to create **Your** own design in 3-dimensional, real 3-dimension, up to six-inches in depth.

Combine this freedom of design with economy, hair-cell finish, color durability of Tedlar®, light-weight (less than 2# per sq. ft. for an insulated panel), freedom from rust or corrosion, any desired U-factor, a wide variety of interior face materials, and you can see the horizons that open up to you. 6311 St. John Ave., Kansas City, Mo., HU 3-7000

Call or Write:



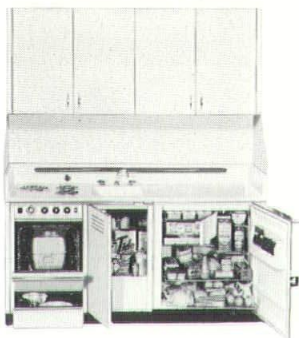
PAX-Panel



Add space with Dwyer Kitchens

By combining full kitchen facilities into single, compact units, Dwyer Kitchens actually add space to floor plans, make them more attractive and livable. And recess models, like the Series 69 shown, "hide-away" behind closures when not in use. There are kitchens designed for apartments, motels, hotels and other rental properties, for the executive office and employee lounge, schools, churches and institutions. Specific applications include "senior citizen" and college married student housing.

To receive a complete ARCHITECTS DATA FILE and additional information on Dwyer Kitchens, contact the Dwyer representative nearest you, or write DWYER PRODUCTS CORPORATION, Michigan City, Indiana.



Dwyer Products Corporation is a member of The Producers Council

DOOLITTLE EQUIP. CO.
1301 Westport Road
Kansas City, Mo.
PL. 3-4455

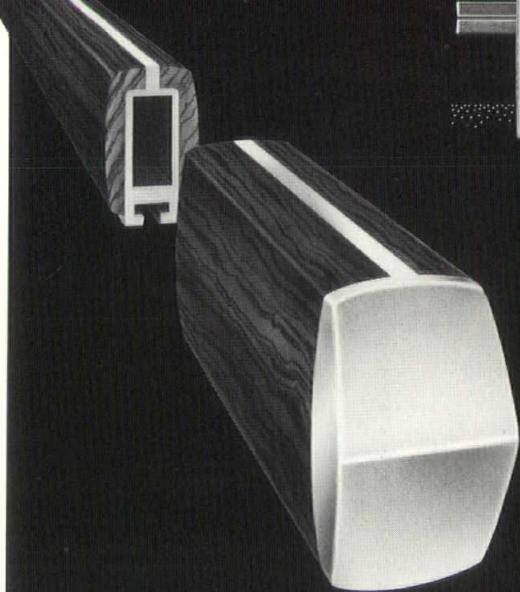
BERARD MATERIALS CO.
209½ 5th Street
West Des Moines, Iowa
277-7168

J.K. MONTEITH & ASSOC.
Suite 100, Medical W. Bldg.
950 Francis Place
Clayton, Missouri
PA. 5-5000

**OKLAHOMA ELECTRICAL
SUPPLY COMPANY**
427 North W. 4th St.
Oklahoma City, Oklahoma
CE. 6-5603

WICHITA CABINET CO.
1313 East Harry
Wichita, Kansas
AM. 5-8646

**NEBRASKA CUSTOM
KITCHENS**
4601 Dodge Street
Omaha, Nebraska
556-1000



NEW WOOD HANDRAILS with an aluminum core substructure are furnished as a complete unit by Blumcraft. The solid walnut wood, with a natural hand-rubbed oil finish, is bonded to the aluminum at Blumcraft's factory. This new railing concept combining wood and metal is trademarked **RAILWOOD®**

Complete 1964 catalogue available from Blumcraft of Pittsburgh, 460 Melwood St., Pittsburgh 13, Pa.

*Trademark

© 1964 Blumcraft of Pittsburgh



HAL WOODBRIDGE HAWKINS

Greenwood – SMS Training School,
Springfield, 1925-34

Missouri Military Academy, Mexico, Mo.
1936-36

Springfield Central High,
Graduated 1939

Southwest Missouri State at Springfield,
1946

Kansas State College at Manhattan.
Graduated 1950 with
B. S. in Architecture.

Opened office in Springfield, June 1956

Associate Member, AIA since 1958

- ☐ AD-AIRE
- ☐ ASPHALT SEAL COAT
- ☐ BAR SUPPORTS
- ☐ BLOK-JOINT
- ☐ BLOK-MESH
- ☐ BRICK
- ☐ COFAR
- ☐ CORRUFORM
- ☐ CULVERT PIPE
- ☐ DEK-SEAL
- ☐ EPOXIES
- ☐ EXPANSION JOINT
- ☐ FENESTRA DOORS & FRAMES
- ☐ GLAZED TILE
- ☐ GUARD RAIL
- ☐ HAYDITE AGGREGATE
- ☐ HAYDITE BLOCKS
- ☐ HUNT PROCESS
- ☐ JAHN FORMS
- ☐ JOINT SEALER
- ☐ REINFORCING BARS
- ☐ SATUROCK
- ☐ STEEL ROOF DECK
- ☐ SONAIRDUCT
- ☐ SONOTUBES
- ☐ SONOVOIDS
- ☐ STRIP-EEZ
- ☐ TRI-KOTE
- ☐ TUFCON
- ☐ WELDED WIRE MESH

NAME.....

FIRM.....

ADDRESS.....

CITY & STATE.....

☐ Architect ☐ Engineer ☐ Contractor

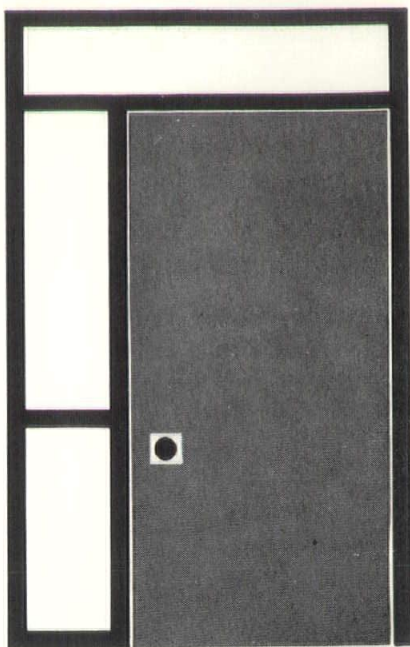
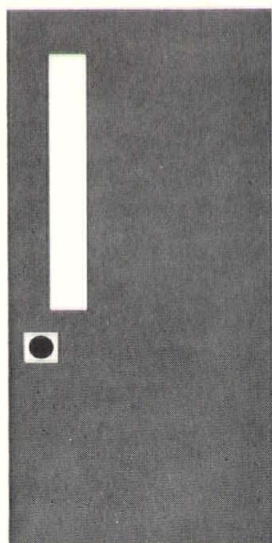
MAIL TO: The Carter-Waters Corp.

2440 Pennway • Kansas City, Mo. 64108

Telephone GRand 1-2570

- SMA-10

HOLLOW METAL



doors and frames

Fenestra Steel Doors and Frames with the "Custom Touch" provided by Carter-Waters' fabrication service.

Two important factors are working for you when you take advantage of Carter-Waters' Fenestra service: 1. The proven quality and reputation of the famous Fenestra line. 2. The outstanding fabrication service offered by Carter-Waters' skilled fabricators. Doors and frames are fabricated in our shop, from warehouse stock, to your specifications, for jobsite delivery without delays. Call us before you specify or bid. You'll like this new "Custom Touch" service.

diversified materials service



All the marble for your building ... from one reliable source



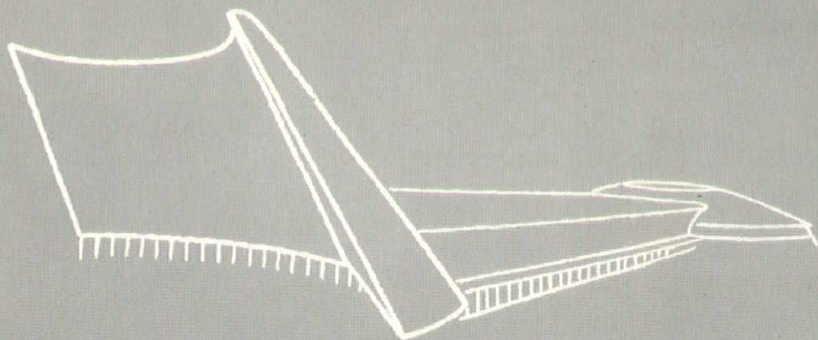
With more than 150 foreign and domestic marbles kept in permanent stock, with the largest marble finishing plant West of the Mississippi, Carthage Marble Corporation is your best source of marble in the Central States.



CARTHAGE MARBLE CORPORATION

3030 Wyoming Street, Kansas City, Mo. • P.O. Box 718, Carthage, Mo.

thin shells...



...of lightweight concrete

**“reduced
weight
and
increased
strength”**

...with



BUILDEX, INC.,

BOX 15,

OTTAWA, KANSAS

NEWS NOTES

NOMINATIONS IN ORDER FOR 9TH ANNUAL R. S. REYNOLDS MEMORIAL AWARD

WASHINGTON, Oct. 17 — Nominations are now being received for the ninth annual R. S. Reynolds Memorial Award, the largest in architecture, The American Institute of Architects announced today.

The international Award, consisting of an honorarium of \$25,000 and an original sculpture in aluminum, is conferred each year on an architect for design of a significant work of architecture in which aluminum has been an important contributing factor.

Nominations will be accepted by the AIA, which administers the Award, through December 31, 1964. The nominations will be reviewed by a jury of distinguished architects appointed by the AIA.

Brochures inviting nominations for the 1965 Award are being mailed to all AIA members and to architectural societies in foreign countries. An architect may be nominated by anyone, including himself or his firm, using a form included in the AIA brochure or by writing The Reynolds Award, The American Institute of Architects, 1735 New York Avenue, N. W., Washington, D. C., 20006. Preference is given to structures completed during the past three years.

The 1964 Award was given to Skidmore, Owings & Merrill, for design of the U. S. Air Force Academy Chapel, Colorado Springs, Colo. Walter A. Netsch, Jr., was partner in charge of design of the Chapel. Previous Awards have gone to architects in Germany, France, the United States, Switzerland, Australia, Belgium and Spain.

The R. S. Reynolds Memorial Award was established by Reynolds Metals Company in honor of its late founder.

M.A.R.A. ANNOUNCES STUDENT AWARD INCREASE

The Missouri Association of Registered Architects annual award to an architectural student was recently increased from a \$200.00 to a \$300.00 award, President Edward J. Thias has announced. This award was given to students enrolled in the School of Architecture at Washington University in 1961, 1962 and 1963. The award must be used for the recipient's tuition and it is granted to an outstanding student of architecture in Missouri.

ADDITIONAL DATA ON LEGAL SEMINAR AT UNIVERSITY OF NEBRASKA

Omaha, Nebraska – The Nebraska Architects Association, a Chapter of the A.I.A., and the College of Engineering and Architecture, University of Nebraska, are jointly planning a one day seminar on November 23, 1964 entitled "LEGAL ASPECTS OF THE CONTRACT DOCUMENTS". Last month, SKYLINES carried an announcement of this event and the latest information received conveys the following additional items:

The Seminar, which will be held in Lincoln, Nebraska at the Center for Continuing Education, University of Nebraska, will be open to all architects, designers, draftsmen, professional engineers, contractors and all other interested parties in the area. Registration fee will be \$10.00, including lunch. Registration may be secured in advance by writing:

Mr. C. W. Bowmaster,
Program Coordinator,
University of Nebraska
Center for Continuing Education
Lincoln, Nebraska 68503

Guest speakers and topics of discussion will be:

"Legal Aspects of Working Drawings and Shop Drawings"

Mr. William W. Eshbach, A.I.A.

Eshbach, Pullinger, Stevens & Bruder

Vice President, American Institute of Architects

Philadelphia, Pennsylvania

"Legal Aspects of Method and Materials Specifications"

Mr. Frank Couch

Smith, Hinchman & Grylls

Detroit, Michigan

"Legal Aspects of the General Conditions"

Mr. John Clark, Attorney

Deckert, Price & Rhoades

Philadelphia, Pennsylvania

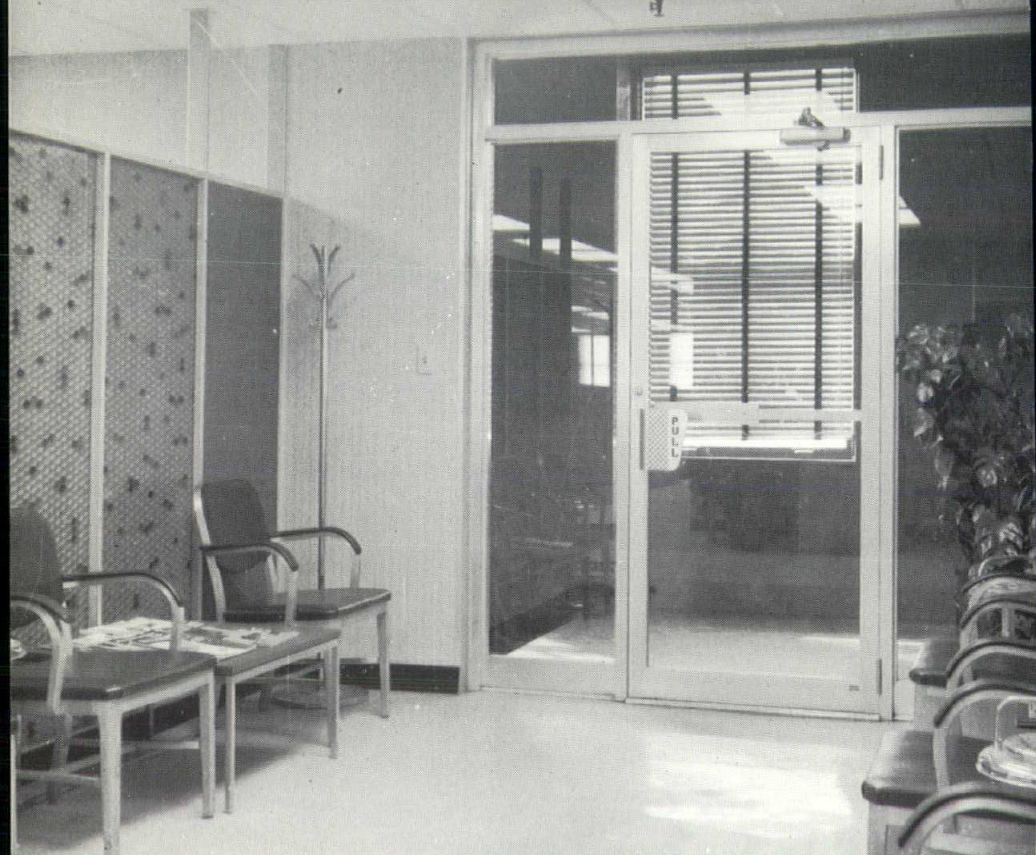
"Possibilities for Protection"

Mr. Victor O. Schinnerer, Insurance Counselor

Victor O. Schinnerer & Co., Inc.

Washington, D.C.

total interiors



a recently completed total interior

Kansas City Natural Slate Co. offers total interiors for your choosing...

- ceilings ■ floors ■ wall coverings
- partitions and epoxy coatings

SEE THESE NEW MATERIALS ON DISPLAY AT THE CONVENTION

KANSAS CITY NATURAL SLATE CO.

3051 S. W. BLVD. • KANSAS CITY, MISSOURI • PLaza 3-5040

V.C.C. #1

(Voluntary Customer Comment)

"We found out the hard way . . . over a period of years . . . that if certain prints absolutely HAVE TO BE GOOD, we have to send them to Western Blue."

That statement, faithfully quoted, didn't replace the profit motive, but it sure helped. It was made by a prominent member of the A.I.A. who likes our supervisors because they are perfectionists, and it paraphrases similar compliments we get daily, couched in slightly different language.

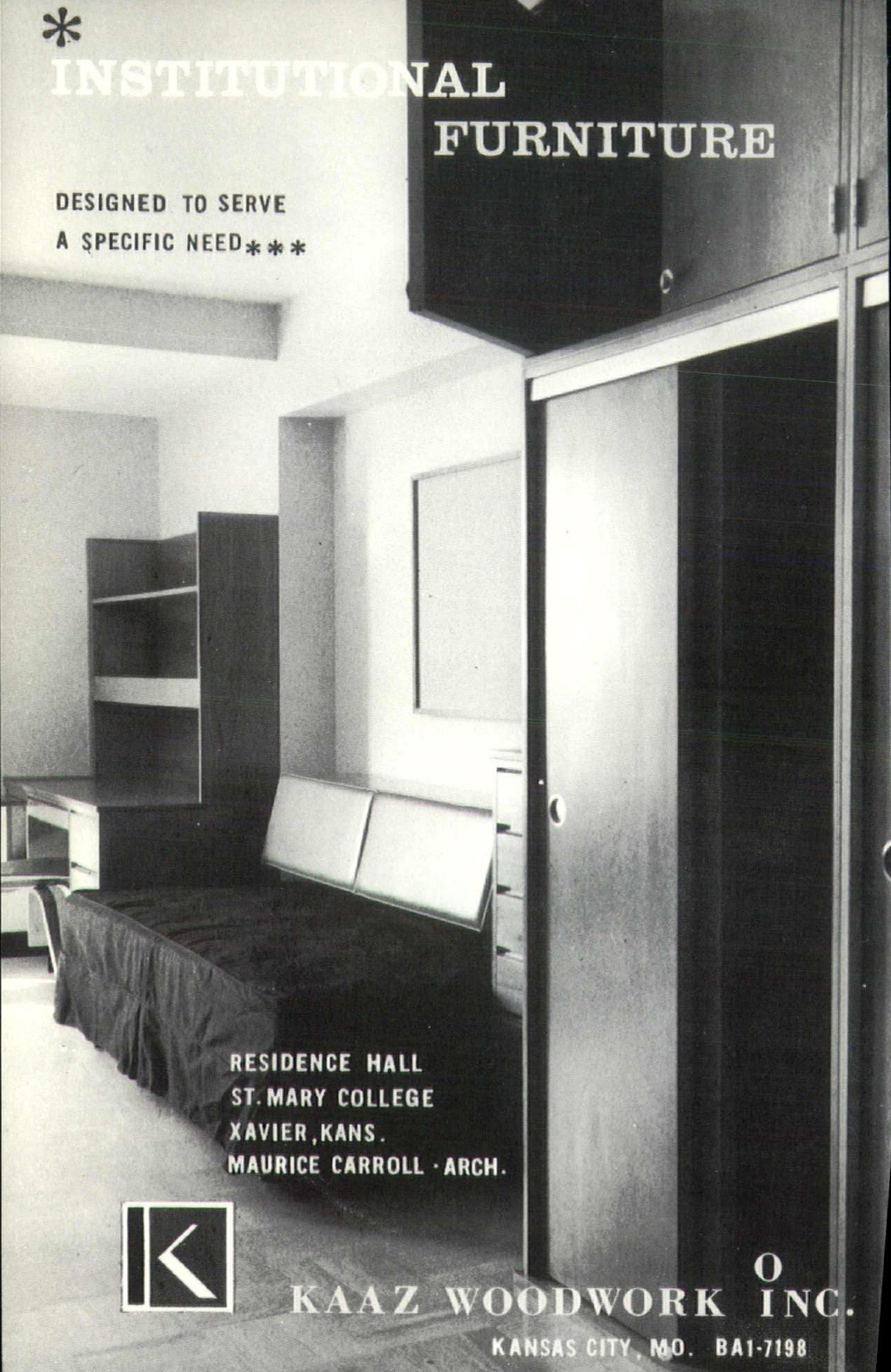
**WESTERN
BLUE PRINT CO**

**909 GRAND
17 E. GREGORY**



INSTITUTIONAL FURNITURE

DESIGNED TO SERVE
A SPECIFIC NEED***



RESIDENCE HALL
ST. MARY COLLEGE
XAVIER, KANS.
MAURICE CARROLL - ARCH.



KAAZ WOODWORK INC.

KANSAS CITY, MO. BA1-7198



(Continued from Page 7)

Ralph E. Myers, I. Lloyd Roark, Arthur S. Keene (seated), and John T. Murphy were presented plaques commemorating the occasion, expressing appreciation for the prestige and distinction their Fellowships have brought to the chapter.

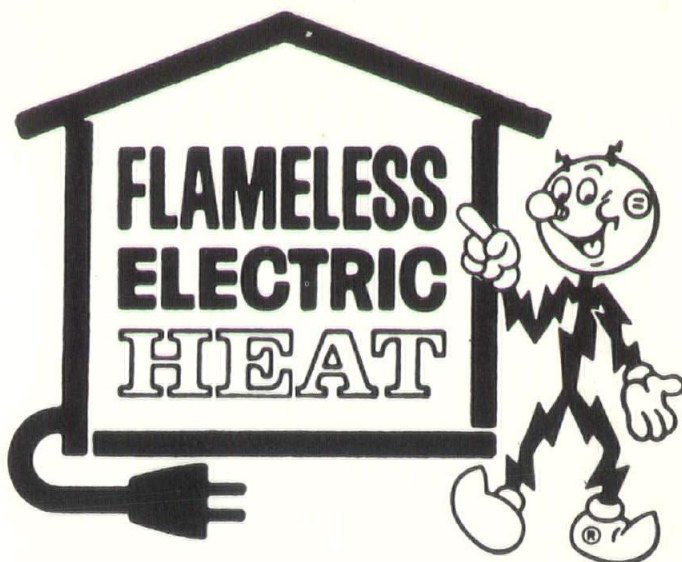
Member-Emeritus, Arthur S. Keene, elevated to the rank of Fellow in 1938, enjoyed the occasion and the opportunity to meet many old friends as well as new ones.



ADVERTISERS IN THIS ISSUE

	Page
Armco Steel Corp.....	1
Arnold-Newbanks, Inc.....	6
Blumcraft of Pittsburgh	11
Buildex	43
Carter-Waters Corp.....	12 & 13
Carthage Marble Corp.....	14
City Block & Products Co.....	56
Dwyer Products Corp.....	10
Great Western Paint Mfg. Corp.	53
Kaaz Woodworking Co.	48
Kansas City Natural Slate Co.	46
K. C. PFAC Contractors	4th Cover
Kansas City Power & Light Co.	51
Lane Blueprint Co.....	8
Modern Center	2nd Cover
Glen O'Brien Movable Partitions	2
Paxton Lumber Co.	9
Ronai Performance Materials, Inc.	3rd Cover
Sonken-Galamba Corp.....	52
Surface Paint Co.....	8
Western Blue Print Co.....	47
Wilson Concrete Co.	54

**HAVE A BUILDING
HEATING PROBLEM?**



**CLEAN...EFFICIENT...EASY TO
INSTALL...NO MAINTENANCE**

If you're planning a new office building, store or any kind of commercial or industrial project . . . expanding your present facilities or making alterations . . . it will pay you to find out more about the many advantages of Electric Space Heating. You may discover that it meets your needs precisely . . . and the rates are lower than ever before. New low-cost equipment, coupled with more economical installation, makes Electricity today's practical answer to many heating problems. And because it is so flexible in application Electric Heating is ideal for both new construction and remodeling. Why not pick up the phone right now and call GRand 1-0060 and ask for a Heating Specialist? Find out how Flameless Electric Heat can be of benefit to you at a cost that's surprisingly low!



**KANSAS CITY
POWER & LIGHT COMPANY**

Mr. Architect:

CALL US!

**We are STRUCTURAL
GLAZED FACING TILE
SPECIALISTS!!**

We can show you how to
put more S.G.F.T. in the job
you now have on your boards,
without increasing your costs!

Call Berry Bird
MAfair 1-4100


SOMKEN-GALAMBA
Corporation

RIVERVIEW AT 2ND STREET
Kansas City, Kans. 66118

Exclusive Distributors:

Arketex Ceramic Corp.
Stark Ceramics, Inc.
Darlington Glazed Brick
Mosaicos Rivero Pre-Cast
Terrazzo Floor & Wall Tile

Entirely New...

CERAMI-KOTE "505"

**GIVES A TILE-LIKE FINISH AT
A FRACTION OF THE COST OF TILE**

Suggested Uses:

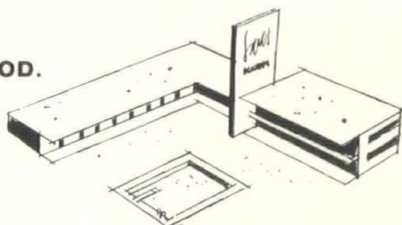
CONCRETE AND MASONRY. METAL. WOOD.

Cerami-Kote 505 has a high solids content which provides 3 to 4 mils per coat coverage; yet, once applied, Cerami-Kote 505 air dries tack-free in 2 to 5 hours, about the same as ordinary enamel. Cerami-Kote 505 has good flow and leveling characteristics so brush strokes blend beautifully.

Cerami-Kote 505 is much easier to use than other two-component coatings. An easy-to-mix 1 to 1 component ratio works best for most applications.

Most two-component systems have a "pot life" of 1 to 6 hours, so small batches must be mixed several times a day. Because Cerami-Kote 505 has a pot life of 16 to 48 hours, you can mix a full day's supply in advance.

No complicated metering equipment is required for spraying. Once mixed, Cerami-Kote 505 can be sprayed like ordinary paint . . . with ordinary equipment. Spraying with high-solids Cerami-Kote 505 produces a high build with few passes. Cleaning up equipment is simple, too.



for motels

hospitals

plants

restaurants

schools

retail stores

(WRITE FOR INFORMATION)

GREAT WESTERN PAINT MFG. CORP'N

1207 West 11th

Kansas City 1, Mo.

Baltimore 1-1322



Northern Natural Gas Parking Structure
Omaha, Nebraska

A three-level parking facility with approximately 25,500 square feet per level and a completion deadline in 90 of the usually worst weather days of the year — this was the unenviable position of contractors Peter Kiewit Sons & Company in January 1964. Fortunately the parking facility was designed to be built with Wilson Prestressed Concrete, and the job was completed the first week in April 1964. It was as easy as that. Provisions also were made to add two new levels as needed in the future. Along with fast, easy erection in all types of weather, Wilson Prestressed Concrete is economical (\$500 less per car area than a similar structure next door) and provides a sturdy maintenance-free structure with low insurance rates. It may pay you to specify Wilson Prestressed Concrete for your next building.

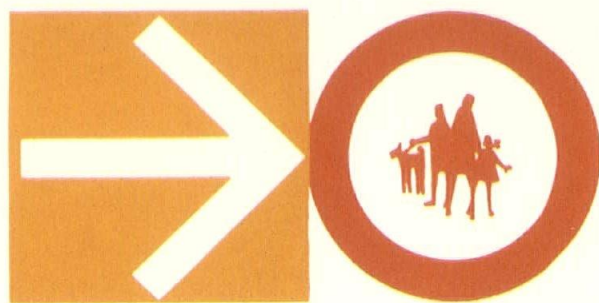
MEMBER KANSAS PRESTRESSED ASSOCIATION

Wilson
CONCRETE

6400 Kansas Avenue • Kansas City, Kansas

With plants in: Red Oak, Iowa • So. Sioux City, Nebraska • Grand Island, Nebraska • Omaha, Nebraska

PEOPLE PLACES



1 9 6 4

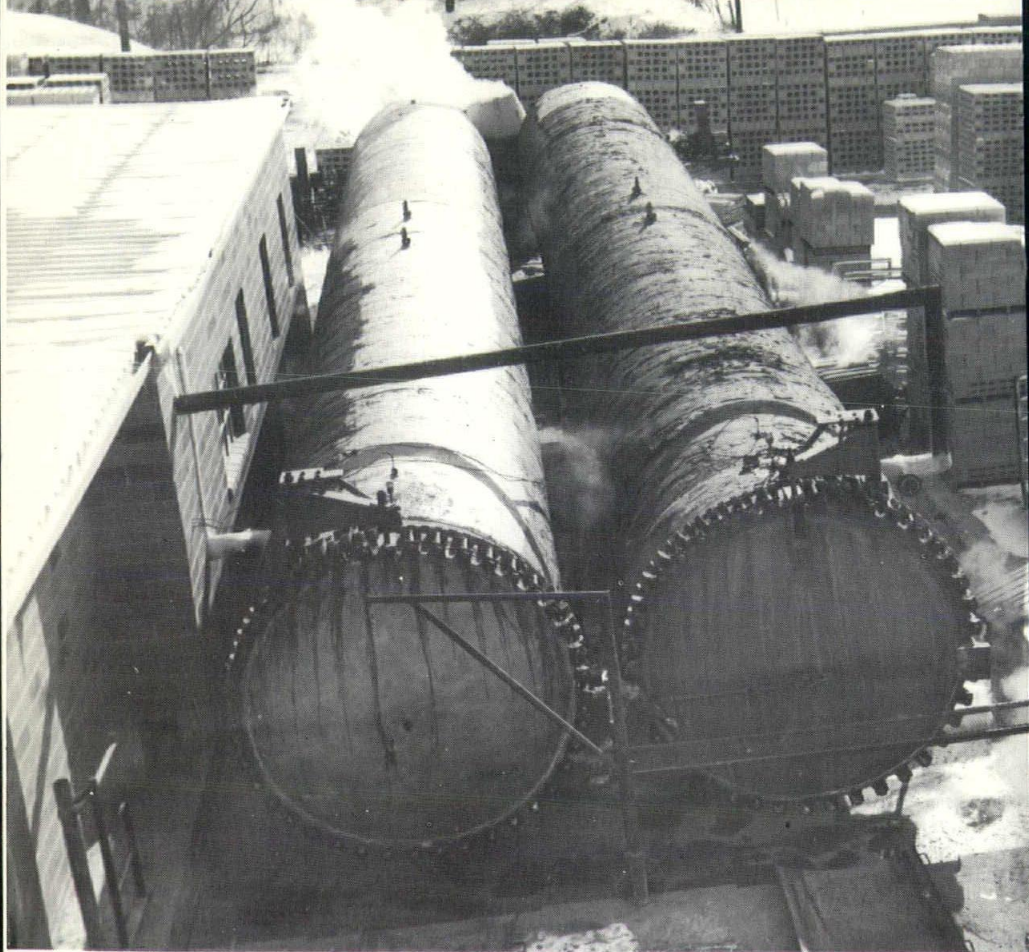
Central States Region

American Institute Of Architects

CONFERENCE

OCTOBER 29, 30, 31

**Hotel Muehlebach
Kansas City, Missouri**



CITY BLOCK AND PRODUCTS CO., has recently installed 2 vessels 80 feet long by 8 feet in diameter for high pressure steam curing masonry units.

For the first time in the Kansas City area you can now have **PRE SHRUNK BLOCKS** in one day's time.

Blocks are cured for 8 hours at a temperature of 360° F. under pressure of 150 lbs. P.S.I.

Suggested specifications have been mailed to all architects.

**CITY BLOCK
AND PRODUCTS CO.**
Independence, Mo.

1212 W. 24 Highway

CLifton 2-8760

WHY ?

At NO GREATER APPLIED COST than conventional paint,

ALL THIS:

- Ultimate in durability over any Paint system
- Minimum interruption maintenance-type finish
- You don't have to have spots
- Complete decorative flexibility of color—coarse or fine in tones, textures, blends or solids
- Proof of performance before acceptance
- Three-year Maintenance-free Service Agreement—
Cost-free service guarantees surface to remain
brand new for the first three years

**IF YOU HAVEN'T been getting this kind of result FOR
YOUR CLIENT — at a bid price of conventional painting —**

Call Ronai for help—

- Specification writing
- Preliminary cost analysis
- Qualified painting contractor bids



RONAI

BA 1-6777

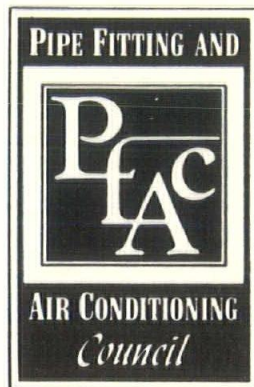
Performance Materials, Inc.

200 Southwest Blvd. Kansas City 8, Mo.

SEPARATE BIDS WITH A SINGLE CONTRACT OR SEPARATE CONTRACTS THE BEST WAYS TO BUILD

AN IMPORTANT MESSAGE FOR

1. Substantial savings.
2. Owner gets full value on mechanical work.
3. Eliminates bid shopping.
4. Owner and/or architect have better control over selection of mechanical contractors.



call your... ***PFAC contractor*** for better



When considering construction consult a registered architect and consulting engineer.

SKYLINES

and
MIDWEST ARCHITECT

604 DAVIDSON BUILDING
Kansas City, Mo. 64108

THE OCTAGON
THE AM. INST. OF ARCH.
1735 NEW YORK AVENUE NW
WASHINGTON D. C.

BULK RATE
U. S. POSTAGE
PAID
KANSAS CITY, MO.
PERMIT NO. 3736

H