



AIA Indiana

2015 Membership Directory

A publication of AIA Indiana | www.aiaindiana.org



PHOTOGRAPHY: TONY FRIEDRICH

RESEARCH AND DEVELOPMENT LABORATORY - BSA LIFESTRUCTURES, INC.



PHOTOGRAPHY: SUSAN FLECK PHOTOGRAPHY

EVANSVILLE MUSEUM OF ART, HISTORY AND SCIENCE - RATIO ARCHITECTS, INC.



PHOTOGRAPHY: BALHAZAR KORAB

COLUMBUS CITY HALL - SKIDMORE, OWINGS & MERRILL LLP



PHOTOGRAPHY: LESLE LANE | STUDIO 13 PHOTOGRAPHY

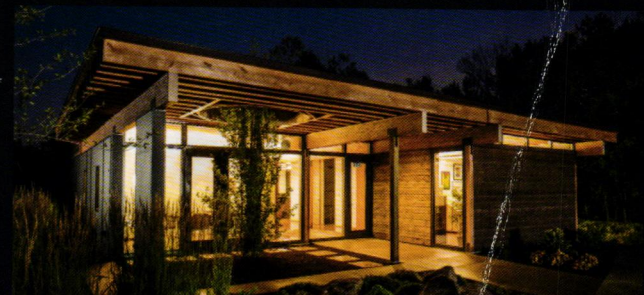
CITY COTTAGE - ONE 10 STUDIO ARCHITECTS

2014 AIA INDIANA DESIGN AWARD RECIPIENTS



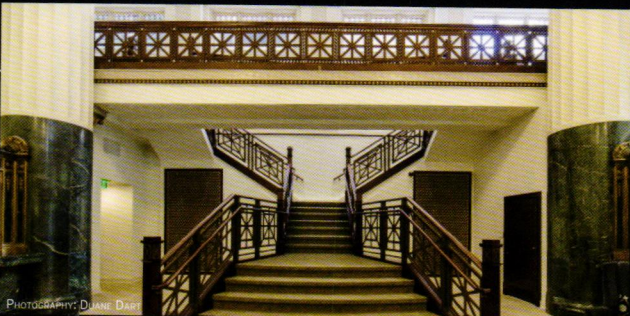
PHOTOGRAPHY: DANIEL HARTMANN / 360 PHOTOGRAPHY

INDYMOD ONE - AXIS ARCHITECTURE + INTERIORS



PHOTOGRAPHY: CHRIS BUCHER PHOTOGRAPHS

LANDSCAPES UNLIMITED - DAVID RAUSCH STUDIO



PHOTOGRAPHY: DIANE DARY

BARNES & THORNBURG LOBBY RENOVATION - SCHMIDT ASSOCIATES



PHOTOGRAPHY: CHRIS BUCHER PHOTOGRAPHS

RECESS + ROOM 4 RESTAURANT - DEMERLY ARCHITECTS

SPRAY-APPLIED THERMAL & ACOUSTICAL FINISHES



INTERNATIONAL
CELLULOSE
CORPORATION

k-13
spray-on systems®

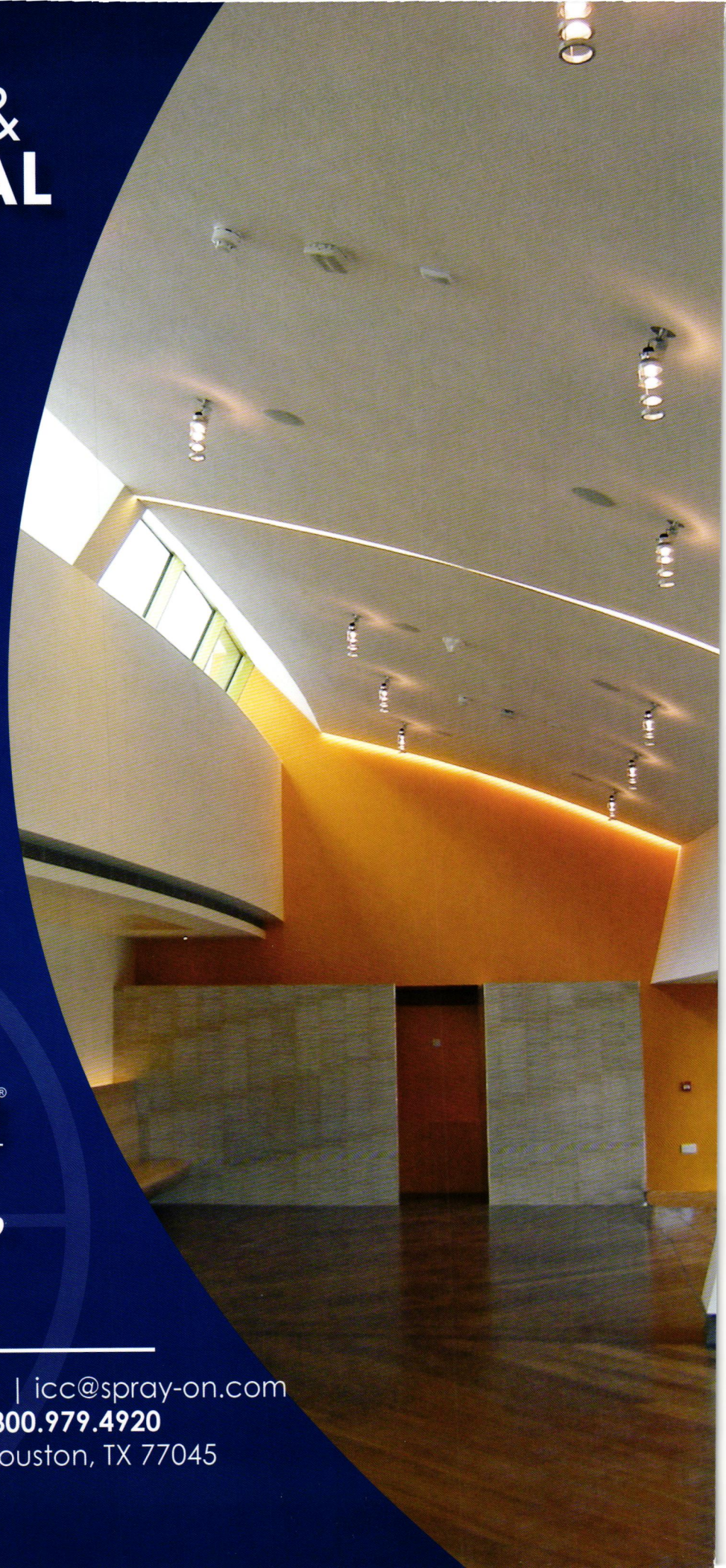
Ure-k
spray coating

SonaKrete®
Premium Acoustical Finishes

SonaSpray "fc"
Acoustical finish®



www.spray-on.com | icc@spray-on.com
713. 433.6701 | TF: 800.979.4920
12315 Robin Blvd. Houston, TX 77045



TREX ELEVATIONS® STEEL DECK FRAMING.
STRONGER. STRAIGHTER. SMARTER.

Trex Elevations®

STEEL DECK FRAMING
1-800-BUY-TREX



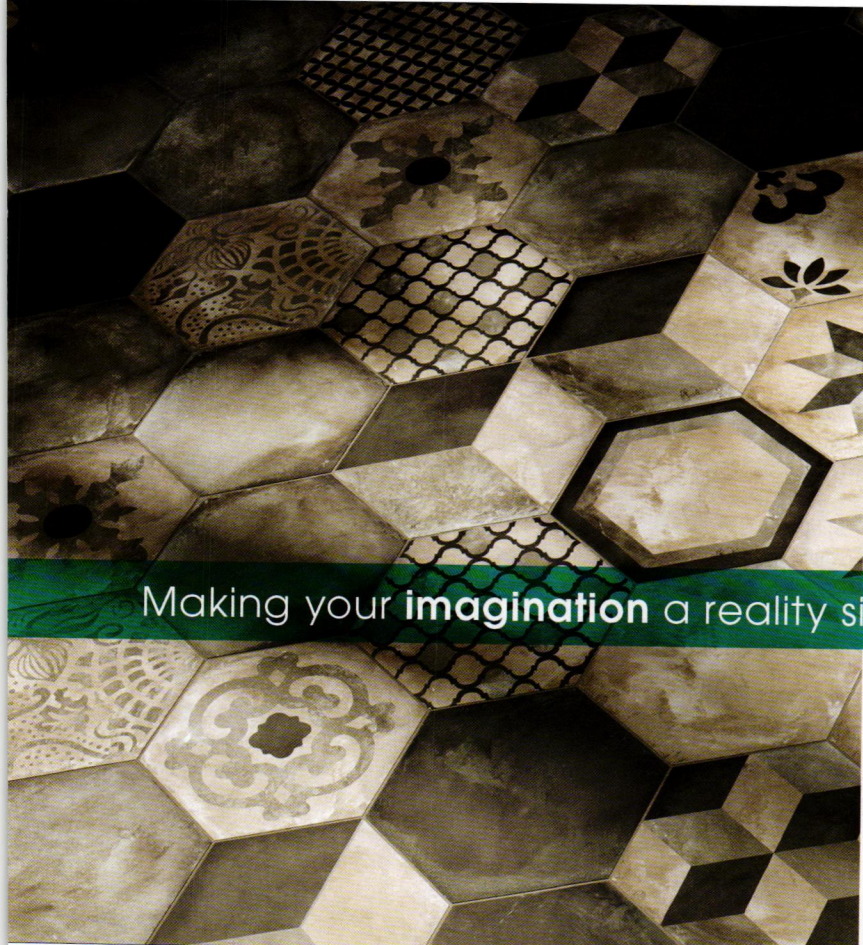
WON'T TWIST, WARP OR SAG | NON-COMBUSTIBLE | SPANS LONGER DISTANCES



Visit trex.com/elevations to take our AIA CEU course: Steel Deck Framing for Composite Decking



NILCO.NET • 800.777.9352



LOUISVILLE TILE

1955 - 2015 | Celebrating Our
Diamond Anniversary

Making your **imagination** a reality since 1955.

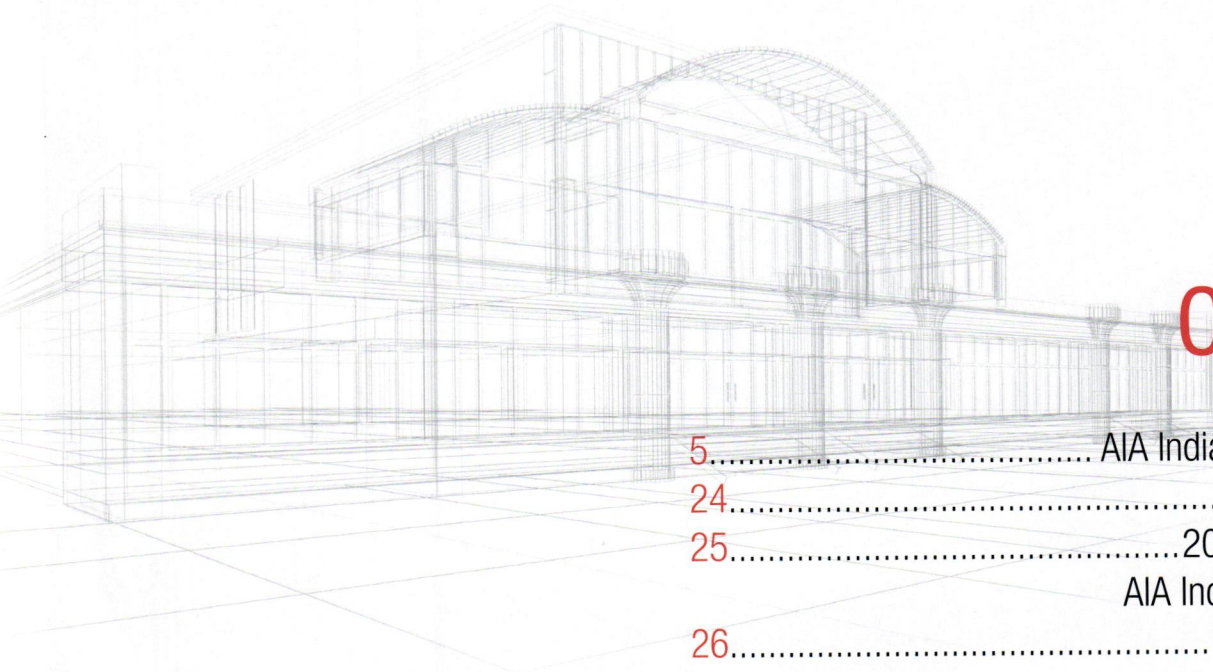
LOUISVILLE TILE OF INDIANAPOLIS

9906 North by Northeast Blvd.
Fishers, IN 46037

317 570-8453

LOUISVILLE-TILE.COM





Contents

5..... AIA Indiana Member Roster
 24..... Firm Profiles
 25..... 2014 AIA Indiana and
 AIA Indianapolis Sponsors
 26..... 2015 Buyers Guide

On the Cover

2014 AIA Indiana Design Award Winners

AIA Indiana

115 W. Washington St., Ste. 955 S.
Indianapolis, IN 46204
(317) 634-6993
www.aiaindiana.org

AIA Indiana 2015 Membership Directory is published by Innovative Publishing.
10629 Henning Way, Suite 8
Louisville, Kentucky 40241
844.423.7272
www.innovativepublishing.com

Innovative Publishing specializes in creating custom magazines for associations. Please direct all inquiries to Aran Jackson, aran@innovativepublishing.com.



2015 AIA Indiana Executive Committee Members

President

Jenelle Smagala, AIA
Synthesis Incorporated
251 N. Illinois St., Ste. 200
Indianapolis, IN 46204
(317) 951-9500
smagala@synthinc.com

Vice President/ President-Elect

Megan L. Crites, AIA
MKM architecture + design
119 W. Wayne St.
Fort Wayne, IN 46802
(260) 422-0783
mccrites@mkmdesign.com

Treasurer

Michael E. Davis, AIA
Hafer Associates, PC
21 SE 3rd St., Ste. 800
Evansville, IN 47708-1419
(812) 858-2938
mdavis@haferassociates.com

Secretary

Lisa Gomperts, AIA
Schmidt Associates
415 Massachusetts Ave.
Indianapolis, IN 46204
(317) 263-6226
lgomperts@schmidt-arch.com

Ex-Officio

Ron Searcy, AIA
1030 N. Central, Suite 1
Indianapolis, IN 46202
(317) 636-3211
ron@randbarchitects.com

Executive Director

Jason Shelley (nonvoting)
AIA Indiana
115 W. Washington St.,
Ste. 955 S.
Indianapolis, IN 46204
(317) 634-6993
jshelley@aiaindiana.org