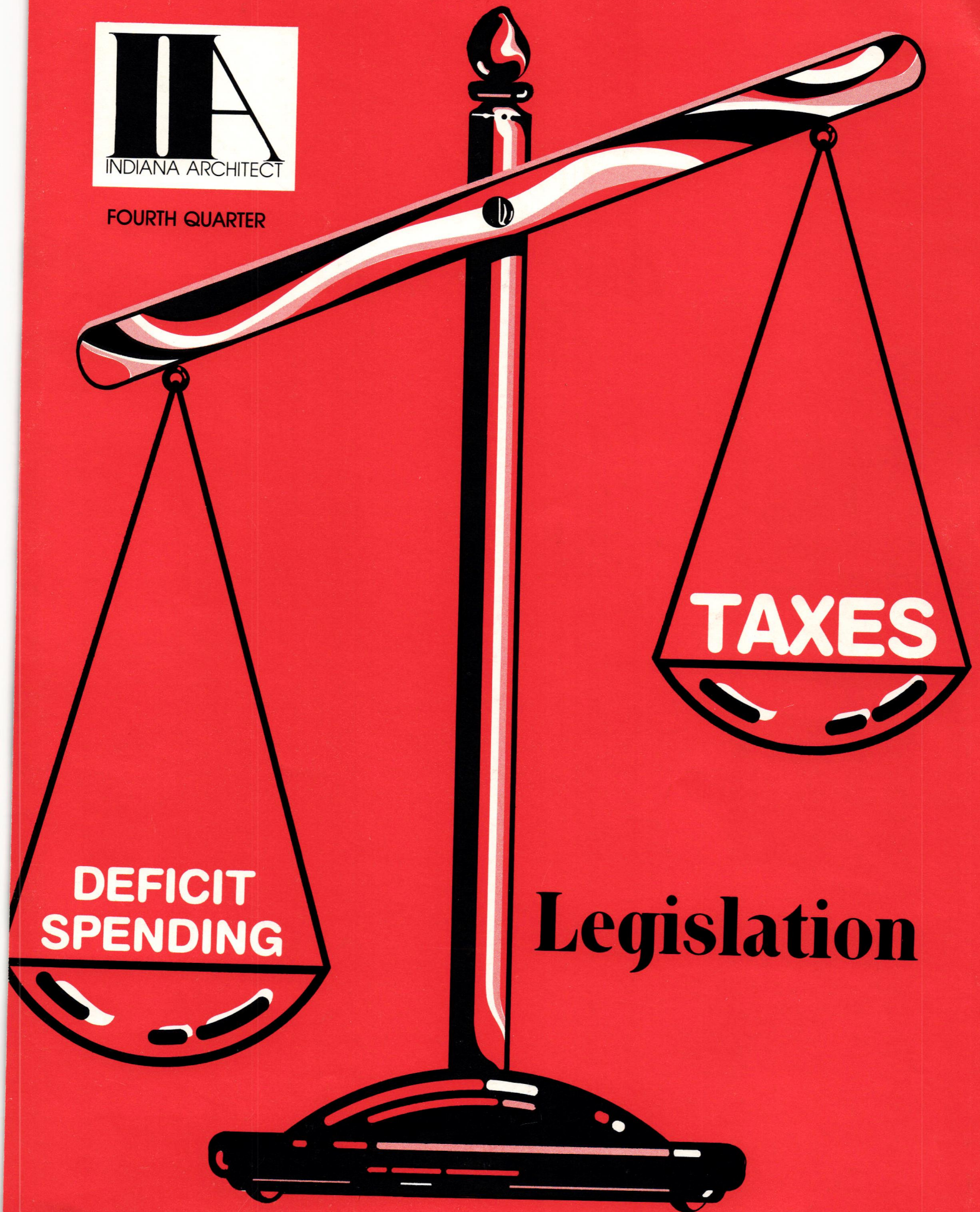




FOURTH QUARTER



**DEFICIT  
SPENDING**

**TAXES**

**Legislation**

... IN SIZE

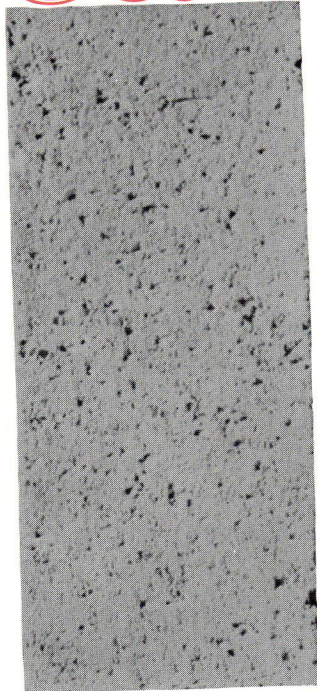
COLOR

TEXTURE

TRADITION

*Belden  
Brick Measures  
Up....*

**Color**



Who could disagree that color is an integral part of design? And whether your design calls for a wide range of color or a narrow range of color, BELDEN Brick covers the spectrum. The largest selection of color in the industry, from dusty pinks to light orange to deep reds and blacks. Over 200 variations of brick, including color, texture, and size, help to enhance your design ingenuity.

Your nearest BELDEN Dealer will show you the facts or write us at Box 910, Canton, Ohio 44701.

THE **Belden**  
**Brick**  
COMPANY



Indiana Architect is the official publication of the Indiana Society of Architects

Volume 5, No. 5 Fourth Quarter, 1982



Commentary	2
Legislative Concerns The Indiana Society of Architects, AIA	3
Designing for public education – is there still a challenge? by Raymond S. Thompson, AIA	7
Top Notch is alive, well despite strike by Robert L. Gildea	9
ABC promotes merit shop by Jan C. Goss	11
The Code Board by Dennie Skeens and Sandra Hawkins	13
Priority: Economic Development by Lt. Governor John Mutz	14
Indiana Designed	15
Tracings	16
Nuts and Bolts by Henry G. Meier, AIA	18
Life Safety by Courtney E. Robinson II, AIA	19

ISA Editorial Board: Wayne S. Schmidt, AIA, chairman; Stanley Dziacko, AIA; Edmund L. Hafer, AIA; William C. Moe, AIA; Lynn Molzan, FAIA; Dean L. Upshaw, AIA

The material in this publication does not necessarily reflect the opinions or beliefs of the Indiana Society of Architects.

Indiana Architect (ISSN 0445-8605) is owned by the Indiana Society of Architects and is published quarterly each year with a special issue in June. Subscriptions are \$12.50 per year. Third class postage paid at Indianapolis, Indiana. Copyright 1982. All rights reserved.

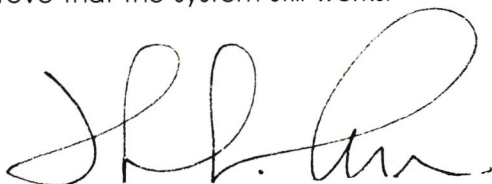
# Commentary

## From the President

Politics, Politics! Just when you're totally convinced the system works, your confidence is shattered. News of accusations of wrong-doing by a legislator or lobbyist brings with it a special sense of sorrow and concern to those of us who work within the system and believe in its unquestioned merit: sorrow, not for the individual who may have abused his position of trust, but for those of unimpugned integrity who must endure an imagined loss of credibility with the public; and concern, not because the system has properly purged itself, but because a special effort must now be made to convert a perceived weakness in that system into the correctly recognized strength that it truly has.

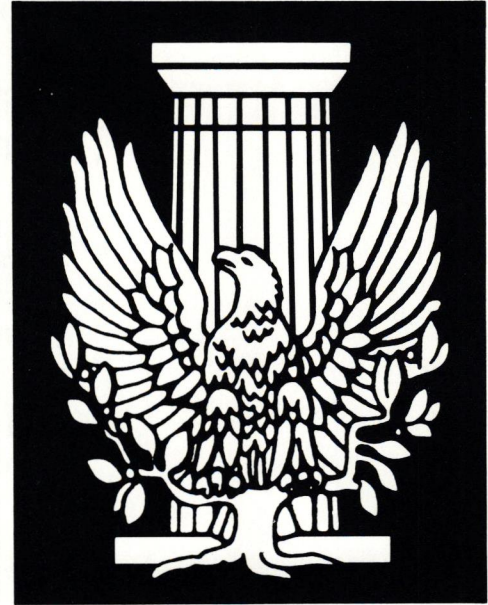
While lively, Indiana politics, to me, have always represented honesty, integrity and trust. The Indiana Society of Architects considers it basic to its active involvement in promoting legislative issues to consider the best interests of our membership, allied professionals and Indiana citizens. And to fight against proposals that we believe are not in these groups' best interest. One of five commissions, into which the ISA is organized, deals exclusively with legislative concerns, is considered the highest priority by a majority of our membership, and will for the first time, beginning in 1983, have the assistance of a professional legislative analyst and lobbying coordinator. In this issue of **Indiana Architect**, we have addressed several key areas of concern, stating our position, and proposing action. As bills are filed during the session we will, no doubt, have additional issues to deal with as we bring our unique experience and perspective to the political scene.

So, Dear Legislator, please understand this: We believe in the system; we believe in you; and we believe in these issues! You will be hearing from us. We want to work with you if we can, and we'll work against you if we must. We demand total honesty from you and we pledge to you the same. We are confident that the Indiana Legislature and the Indiana Society of Architects can together continue to demonstrate the true strength of politics and to prove that the system still works.



John S. Allen, AIA  
1982 President

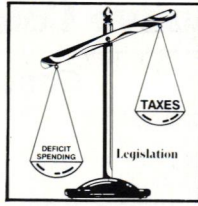
1857 \* 1982 The First 125 Years



# 125

THE AMERICAN INSTITUTE  
OF ARCHITECTS





# Legislative Concerns

## The Indiana Society of Architects, AIA

---

To the Citizens and Legislators of Indiana

The architects of Indiana and the members of the Indiana Society of Architects, a component of the American Institute of Architects, have concerns and proposals which we wish to place before the people, the legislators, and the government officials of the state of Indiana.

We are deeply concerned and involved with the conservation of our environment, the need for adequate housing and health facilities, the conservation of energy, and the reuse and rehabilitation of existing buildings. We are also deeply concerned with such professional issues as statutes of limitations.

The Indiana Society of Architects is committed to assist those persons in government involved in resolving our immediate problems. We are equally anxious to participate in formulating the long-range plans necessary to meet the physical and social needs of the people of our state.

The Indiana Society of Architects represents over 200 architectural firms that employ thousands of individuals who, in turn, are responsible for the design and construction administration of hundreds of millions of project dollars annually.

We believe that Indiana's Legislature has been among the most progressive in the country. The Indiana Society of Architects stands ready to assist in the legislative process.

**Robert N. Kennedy, FAIA, Chairman**  
**Archonics Corporation**  
c/o Indiana Society of Architects  
148 N. Delaware Street  
Indianapolis, IN 46204

### CONCERN: ENERGY

Buildings are responsible for the use of our national energy resources in three distinct phases: 1) the production of building materials, 2) the con-

struction process, and 3) maintenance and operation. The architectural profession can influence the effective use of energy in all three of these phases.

### Challenges:

1. Design innovation and construction are often hampered by the traditional values imposed by lending agents.
2. Codes, and local building and zoning regulations often do more to restrict good "energy-conscious" design than they do to encourage it.
3. The current stage of technology and economic incentives make "energy-conscious" design easily attainable by higher income consumers but nearly inaccessible to lower income groups. Unfortunately, if "energy-conscious" design were available to them, it is construction buyers from lower income levels who could make the greatest impact on both individual economic and national fuel savings.
4. Economic incentives (tax credits, grants, solar loans, etc.) must continue in order to encourage the consumer to conserve energy by investing in better construction or equipment.

### Proposals:

1. That public information and educational efforts be continued to promote "energy-conscious" design. Little will be done unless the designer, the lending agent, the builder, and the building owner are **all** convinced that additional initial costs are economically worthwhile, saleable and aesthetically acceptable.
2. That revisions be made to state and federal revenue codes to encourage "energy-conscious" design.
3. That a "solar loan" program be created to make construction money for "energy-conscious" design more available to lower income consumers.
4. That efforts be continued to encourage development of energy savings techniques in addition to "solar," such as: bio-mass, hydro-electric, photovoltaic, wind, "super-insulation," earth sheltering, and geothermal.