

BEST OF THE BEST: AIA IOWA AND CENTRAL STATES REGION WINNERS
KEVIN NORDMEYER: AIA IOWA MEDAL OF HONOR **AIA YOUNG ARCHITECT AWARD:** DANIELLE HERMANN
WINTER 2018

ia architect

THE OFFICIAL MAGAZINE OF AIA IOWA



Awards Issue

2017 AIA Iowa, Central States Region, and Annual Design Awards

CUSTOM BRICK SHAPES

YOU CREATE
THE VISION. WE
MAKE THE BRICK.



Sioux City Brick makes custom brick in thousands of shapes. Each begins with CAD drawings and ends with quality brick manufactured to the highest standards. Let us help make your next vision a reality.

Contact your local sales office or Sioux City Brick distributor to learn more about custom brick shapes for your next project.

Sioux City Brick

Since 1913

SIUXCITYBRICK.COM

UNITED BRICK
NEBRASKA BRICK
MINNESOTA BRICK
SIOUX CITY BRICK

515.254.0196
402.408.5555
952.888.9239
712.202.1100

editor's letter



Welcome!

Welcome to the 2017 awards issue of Iowa Architect, celebrating the best of Iowa architecture and the Central States Region. We are pleased to showcase a diverse portfolio of work created by architects who are raising the bar of good design through innovation, complex problem solving, awareness of human comfort, advancement of sustainable systems, and precise attention to detail at all scales.

As we look in awe at the beauty and rigor present in these award-winning projects, it becomes ever present that good architecture is both for the "architects" and the people. It must be beautiful, and it must be purposeful.

In addition, let us celebrate the individuals who continue to work toward the advancement and sustainability of the architecture profession. Congratulations to all of this year's award recipients.

Anna Schwennsen Jones, Assoc. AIA

Editor, Iowa Architect

iaarchitect

Editor Anna Schwennsen Jones, Assoc. AIA

Associate Editors Danielle Hermann, AIA; Brent Hoffman, Assoc. AIA; A. Grant Nordby, AIA; Justin Burnham, Assoc. AIA

Editorial Board Michael Bechtel, AIA; Jackson Den Herder, AIA; Dan Drendel, AIA; Curtis Ehler, AIA; Nathan Kalaher, AIA; Khalid Khan, Assoc. AIA; Katelyn Rutledge, Assoc. AIA; Matthew Schultz, Assoc. AIA; Jessica Terrill, AIA, Editor Ex-officio

Copy Editor Andrea Kline, Kline Copy Co.

Designer Project 7 Design

American Institute of Architects, Iowa Chapter

Executive Director Jessica Reinert, Hon. AIA Iowa

President Gary Van Dyke, AIA

First Vice President/ President-Elect
Danielle Hermann, AIA

Second Vice President Tonia Householder, AIA

Secretary Dan Drendel, AIA

Treasurer Kerry Weig, AIA

Past President Matt Ostaniak, AIA

Directors Alan Wieskamp, AIA; Doug Foreshoe, AIA; Steve King, AIA; Nick Lindsley, AIA; Lisa Kalaher, AIA

Associate Director Matt Schultz, Assoc. AIA

Allied Director Kelli Paskert

ISU Representative Deborah Hauptmann, Assoc. AIA

AIAS President Megan Dunham, AIA Iowa Student Affiliate

Central Iowa Architects Section President
Joe Copley, AIA

North East Architects Section President
Julie Etheredge, Assoc. AIA

North West Architects Section President
Eric Coleman, Assoc. AIA

South East Architects Section President
Nathan Griffith, AIA

South West Architects Section President
Brian Nohr, AIA

Iowa Architect, the official publication of the American Institute of Architects, Iowa Chapter

Iowa Center for Architecture
400 Locust Street, Suite 100
Des Moines, IA 50309
515-244-7502

www.AIAIowa.org / www.IowaArchitecture.org

Subscription Rates

\$24.95/year

Note to Subscribers: When changing address, please send address label from recent issue with your new address. Allow six weeks for change to take effect.

Advertising

Tonya Vitzthum
Associations Inc.
515-669-3010
tvitzthum@associationsinc.us

Publisher

Tom Smull
Associations Inc.
515-201-3133
tsmull@associationsinc.us

Managing Editor

Abby Gilman
319-573-2386
abbygilman@mac.com

Introducing

Masonry Institute of Iowa's

Design Partner Membership

Architectural firms, you are invited to become a member of the MII. For only \$100/year you can be part of the association that promotes quality masonry design in Iowa.

Benefits

- Three complimentary registrations and/or entries to MII's annual spring seminar or architectural design awards program
- Member pricing to MII's annual spring seminar
- First opportunity to host MII's lunch and learn programs
- Communications regarding quality masonry design



Working to build a better Iowa -
with brick, block and stone

For more information on membership visit:
[www. MasonryInstituteofIowa.org](http://www.MasonryInstituteofIowa.org)

Founded in 1975, the Masonry Institute of Iowa is a non-profit association dedicated to promoting the use of brick, stone, and block in construction. We strive to work with architects and engineers to design quality masonry structures in Iowa. Consider partnering with us today.

contents

IOWA ARCHITECT MAGAZINE WINTER 2018



^ Cedar Rapids
Public Library, p.22

Features

20 AIA Iowa Design Awards

Impressive work highlights
the 2017 AIA Iowa award winners

40 Central States Region Design Awards

The best of the best: award
winners from the greater region

Departments

06 Profile

AIA Iowa individual
award winners honored

12 Collected

Emerging Professionals
Competition and 15 years of
exemplary leadership from
Jessica Reinert, Hon. AIA Iowa

18 On The Boards

New IMT headquarters will
reflect its culture and values



ON THE COVER
Pacific Center Campus
Amenities Building, p. 26



AIA Iowa Medal of Honor

Kevin Nordmeyer pioneered sustainable architecture in Iowa. Now he's shepherding the next generation of designers as they make the world a healthier, happier place for everyone.

WORDS : HANNAH GILMAN

For 2017 AIA Iowa Medal of Honor awardee Kevin Nordmeyer, AIA, sustainable architecture isn't a choice – it's a necessity. And for more than 25 years, he's championed sustainable architecture as a designer, a leader, and a teacher. He served as president of AIA Iowa, helped guide the AIA Iowa Committee on the Environment (ICOTE), chaired the regional Convention of AIA Central States Region, and served as awards committee chair for AIA Iowa.

In addition, Nordmeyer served as director of Iowa State University's Iowa Energy Center, sat on the boards of several green building councils, and lectured at Iowa State University's College of Design.

Since 2011, he's been a principal at BNIM Architects' Des Moines office, where his colleagues proudly call him a friend, collaborator, partner, mentor, and pioneer. "Before it was popular – and before others came to realize it as a necessity – Kevin recognized the need for high-performance, sustainable design," writes Bob Berkebile, AIA, BNIM principal emeritus. In 1992, Nordmeyer led the design team that would create Iowa's first sustainable building: the University of Northern Iowa's Center for Energy and Environmental Education. Since then, he's been behind dozens of award-winning environmentally friendly

buildings, but more importantly, says Berkebile, he's helping shepherd the next generation of designers. "Above all, Kevin understands the importance of educating future design professionals on sustainable design and challenges them to continue to advance the systems currently in place."

Teaching is core to Nordmeyer's being. "I have had – and continue to have – mentors who demonstrate how to create beautiful, rigorous, and purposeful buildings," he says. "I have been fortunate that a few key mentors introduced me to the concepts of sustainable design, and through my success, I feel obligated to share what I have learned so that those who come after me can create even more meaningful, positive change for our planet." And with the increase of global climate problems, says Nordmeyer, architects must respond with design that considers this. "Creating buildings with these values, educating the public, and mentoring design students has become a driving force for me."

Looking back at his career and his body of work – which is still far from over, he says – Nordmeyer names receiving the AIA Iowa Medal of Honor as one of his proudest achievements; a testament to his heart for giving back to his community. "I love being able to take what I learned from others and through my work and help teach others

for the future, hopefully making a positive impact," he says. Regarding the Medal of Honor? Nordmeyer extends his sincerest thanks. "It's very humbling when I look at those who have received the award before me," he says. "Most of the architects on that list positively impacted me in my career and continue to do so. I hope I can continue to impact the list of medal awardees that is yet to come."

Congratulations, Kevin!

"Once you design with a focus on restoring the environment and creating spaces that improve human performance, it becomes apparent that there is no other way to design."

— KEVIN NORDMEYER, AIA



AIA Young Architect Award

Danielle Hermann creates a culture of diversity and excellence in Des Moines.

WORDS: LIZ BROWN

After receiving the Young Architect Award from the American Institute of Architects, Iowa Chapter in 2016, Danielle Hermann, AIA, associate principal at OPN Architects, won the National AIA Young Architect Award. Nationally, only 14 architects were given this award, based upon professional achievements and leadership. Danielle's investment in Iowa, in diversity, and her consistent pursuit of excellence in her work contributed to her being given this recognition. Over the course of her career, she has worked in corporate and historic settings, both transforming and preserving the city of Des Moines. She's a founder of the AIA Iowa Chapter's Diversity Committee, seeking not only to create great work, but to create a good work environment and to shape the future landscape of her entire field. What sets Hermann apart, even beyond her motivation to encourage the younger generation, is her curiosity and desire to learn.

A Budding Passion

Sometimes a person or an event can shift your entire perspective and give you clarity into the future, but in other cases, interest develops steadily. Hermann's case was the latter, as she had no defining moment that drew her into the profession, but rather it was a cumulation of interest, skill, and time. "It was something I'd been interested in honestly since I'd been really, really young so I can't point to a singular event that drew me to architecture," Hermann says. "I had a strong interest in math, science, [and] art." Hermann explained that sometimes children have both left- and right-brained tendencies, but don't have ideas or examples of future professions. In retrospect, seeing

how her interests led her to being an architect, she is able to help children vision-cast for their futures – possibly as architects themselves. Having an example in front of them makes a future easier to envision; they can "see themselves in you."

Focus on the Present to Improve the Future

"Your favorite is and always should be the project you're working on. That's the one that you should be passionate about at that moment in time," Hermann says. Kraus Gateway Center, designed in collaboration with Renzo Piano Building Workshop, in downtown Des Moines, is Hermann's current passion. A few years ago, had you asked her what her dream project was, "I'd have said working with Renzo, he's one of my favorite architects." Her dream did not disappoint: "Renzo is phenomenal," Hermann says. With such a career goal already under her belt within the first 10 years of her career, it would be easy for Hermann to take it easy, to coast for a bit. However, her response is quite the opposite: she's still learning and ready to set new goals.

"You should learn from what's immediately in front of you and take it and apply it to the next," Hermann says, each one expanding your horizons. She is ready to use what she's learned from this dream project in whatever project she takes on next. The same drive to further diversity in her field gives her the curiosity to take on new and unique projects and set new goals for her career.

Interestingly, but not uncharacteristically, Hermann's next career goal centers around shaping the

culture of her profession. "I was the first female partner in our firm and I'd love to continue ... to expand not only to women but to a diverse group of people that will continue to represent the population," Hermann says. Hermann is a founder of the AIA Iowa Chapter's Diversity Committee and has seen a growth in female representation in university-level architecture programs. Now, "it's less about making sure that we have women and minorities getting into schools, [and more about] building the pipeline – building networks and support systems" for women and other underrepresented people to have post-graduation jobs within the field, she says. Just as realizing her goal of working with Renzo only motivates Hermann to keep learning and creating, seeing more diversity within universities only drives her to make that goal even more widespread: now, she's playing the entire field.

Raising the Bar

Having made steps to promote diversity, Hermann expands her focus yet again. "Excellence in design as a whole is something that I've been focusing on in our firms. All architects ... should be passionate about it," she says. But, as in any creative field, as skill increases, the art is in keeping both your excellence and passion. She seeks to keep the bar set high, and with two prestigious awards under her belt so early in her career, a curiosity and desire to learn, and a passion for diversity, inclusion and the younger generation, there is no doubt Hermann will continue to create excellent work and remain at the forefront of her field.



AIA Iowa Educator Award

Iowa State University professor Ulrike Passe wants students to envision more than just well-designed buildings.

WORDS: KELLY ROBERSON

One day in the near future, Ulrike Passe, AIA, envisions architects, urban designers, and community planners utilizing microclimate information as part of their building energy model. Relying on a complex collection of real-world data, they'd be able to determine how occupants' interaction with a building relates to the near-building climatic conditions, such as trees and other structures nearby, versus the current-day constraints of using data collected mostly at airports. That new information would in turn support architects in the design of sustainable neighborhoods and in understanding the effects of their design on the buildings' context. It's the next evolution of sustainability.

That future — where buildings don't just meet today's standards but the future as well — has been at the core of Passe's career, both as an educator and a professional. It's just one of the reasons that the Iowa Chapter of the American Institute of Architects recognized her with its AIA Iowa Educator Award.

Before she became a professor of architecture, Passe was first a practitioner, and that time affected her outlook and

research agenda in profound ways. "I know that architecture can do an amazing job in providing healthy, resource-efficient environments through design — and you don't need highly sophisticated equipment to do that. It is the spatial composition, proportion of windows, orientation, placement on the site, which matters most," she says. "My goal is to educate the new generation of students and emerging professionals to connect building performance with design goals. Sustainable architecture is good architecture — it's not just about adding a pretty gadget."

Since joining Iowa State University in 2006, she has led a number of efforts and projects to advance that agenda, including the US DOE Solar Decathlon, a recurring summer Berlin studio, the creation of a course sequence in environmental forces and systems, and a sustainable design graduate studio that's become a flagship of the College of Design. Students from that studio have placed in the ACSA & AIA Committee on the Environment Top Ten for Students Competition three times in a row. "I used to say that the German word for 'sustainable architecture' was, simply, 'architecture,'" says Thomas Leslie, AIA,

Morrill Professor in Architecture, Pickard Chilton Professor in Architecture, and Director of Graduate Education at ISU.

"Thanks to Professor Passe's research and teaching, this is now the case throughout our program and state. She has instilled a standard of diligence toward these issues and many others that has raised the bar for all of us as teachers, researchers, and designers."

Passe continues to work on several initiatives, including a large-scale, interdisciplinary research project funded by the university's Presidential Interdisciplinary Research Initiative on data-driven science for sustainable city decision making. And always, there is the goal of educating students to understand that real-people and real-world concerns influence the buildings that they hope to work on one day. "I'm grateful for the award and the acknowledgment of what I've been able to do as an educator," Passe says. "I teach technology, which is not everyone's love child and some students have the idea that architecture is just about fancy pictures. This award is an acknowledgment that really supports my understanding of what is important."



AIA Iowa Young Architect Award

With die-hard dedication and team-building leadership, Kevin Wagner lays the path for future architects.

WORDS : LAUREN DAY

Each year the AIA Iowa Young Architect Award honors leadership and dedication to furthering areas of design, education, or community service of an architect early on in their career. This year, the recipient, Kevin Wagner, AIA, exemplifies what the award stands for. Wagner has progressed an environment of teamwork, volunteerism, education, thoughtfulness, and passion within the design community.

Wagner, an Illinois native, was drawn to Iowa State University's Architecture program over other universities in part because of the pace of life and quality of people he saw in Iowa. He graduated from the College of Design with a Bachelors of Architecture in 2010. Wagner now works at Substance Architecture in Des Moines, Iowa, as a project architect and project manager. "The environment at Substance is openly collaborative and inherently creative. We are able to draw upon the collective talents and ideas of the group to create meaningful design. It is therefore possible for a younger designer to feel more impactful than they might in a more

vertically structured firm," Wagner shares. His work with the firm has earned him accolades from his colleagues and other firms across Iowa, and last year, he and his team received an AIA National Small Project Award for the Deployable Smocked Porch they created in Winterset, Iowa, the second AIA Small Project Award for Substance.

Even in his early career, Wagner has been immersed in a variety of projects from residential to corporate and civic. He is currently working on a corporation that is allowing Substance to change the company culture through the design of a brand new space. Wagner is also involved in the design and construction of the two road bridges over the Des Moines River. The growing population in Iowa cities has created a need for more usable space. Wagner feels these projects have opportunities for Iowa's design culture and awareness to grow. To Wagner, it is important to be "conscience about more than just the end user when designing," he shares. "How does this impact the community as a whole? How does this benefit the general public?"

His dedication to the work doesn't stop at Substance. In collaboration with the AIA Iowa Emerging Professionals Committee, Wagner founded the Iowa Young Architects Forum (IAYAF) in 2016 to promote a cross-disciplinary discourse among AIA Iowa members and fellow design professionals. Wagner also instructs fourth-year architecture students each fall at Iowa State University as an adjunct professor. His class focuses on researching and creating solutions for the infrastructural tensions in the Mississippi River watershed. His time educating and equipping young and future professionals is creating a more valuable, focused, and experienced talent pool for the industry.

His problem-solving, team-building leadership has set the pace for young architects to follow. His thoughtfulness and sustainable design practice have impacted Iowa's appreciation and demand for quality, lasting design already.

Congratulations on receiving this dignified award, Kevin.

The background of the poster is a black and white photograph of a ballet performance. Several ballerinas in light-colored, short-sleeved dresses are in the foreground, with their arms raised high in a graceful pose. In the background, other dancers and audience members are visible, including two men in suits on the left and a woman on the right. A large, ornate chandelier hangs from the ceiling.

ballet

DES MOINES

ARTISTIC DIRECTOR: Serkan Usta

RUNWAY BALLET DES MOINES

Ballet Des Moines' Fundraising Event

Friday, February 23, 2018 | 6:00 p.m. | River Center Eventorium

FOR DETAILS PLEASE VISIT WWW.BALLETDESMOINES.ORG

Discover Rome

Join AIA Iowa and Iowa State University as we explore questions of sustainable urban renewal and long term preservation in one of the most architecturally rich cities of the world.



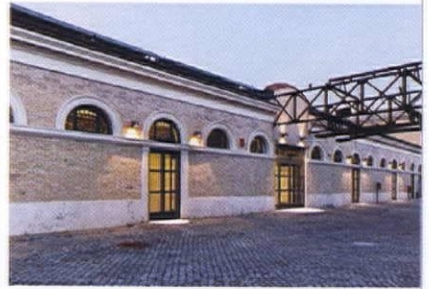
June 8-18, 2018



\$2150*

visit www.aiaiowaevents.org/rome

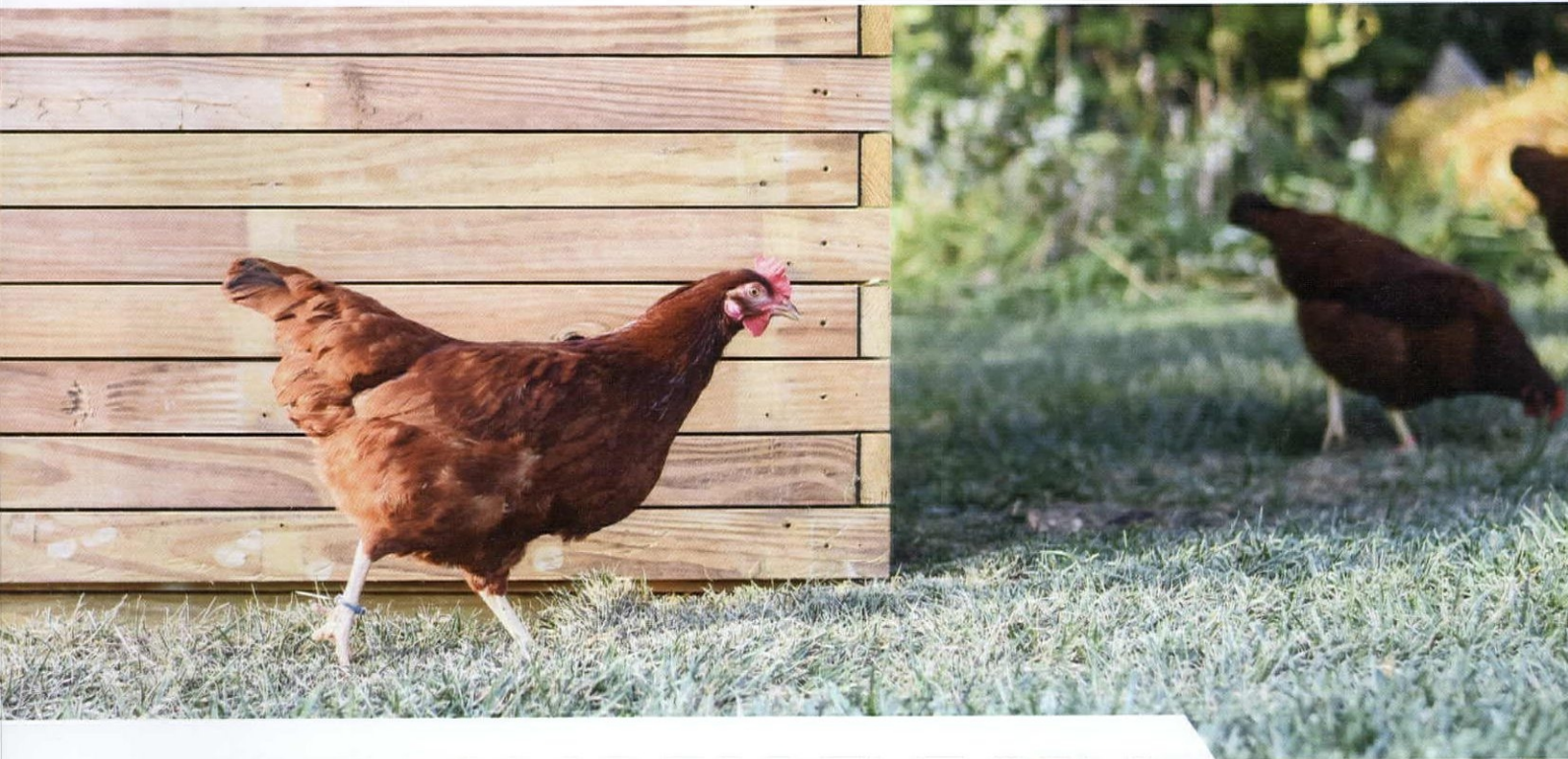
*Does not include round trip airfare and other amenities as specified. See website for details



www.thinkconfluence.com

LANDSCAPE ARCHITECTURE | PLANNING | URBAN DESIGN

DES MOINES | KANSAS CITY | CEDAR RAPIDS | SIOUX FALLS | MINNEAPOLIS | OMAHA



CHICKEN COOP FOR THE SOUL

Young professionals showcased projects at the annual Emerging Professionals competition.

WORDS : ABBY GILMAN

Every year, young architects have the chance to showcase their unique projects at the annual Emerging Professionals competition. Three submissions are chosen as the winners and the designers are sent home with a cash prize. This year's contest saw submissions of all sizes and styles, from a to-scale model of the State of Iowa Capitol Dome to a working chicken coop that's home to seven laying hens. "The competition is important because it gives younger architects and designers a platform to show unique, and sometimes non-traditional, work," says Josh Ridgely, AIA, who took first with his submission "Chicken Coop for the Soul." "It's a nice supplement to the traditional architecture that we often experience at the convention."

Inspired by his home's rural surroundings, Ridgely designed and built the chicken coop – with the help of his wife and children – for purely functional reasons. Much research went into the process. "My wife and I didn't know much about raising chickens, but there are some great resources for what chickens need to live," he says. "Besides looking cool, the coop has to be habitable, comfortable, and functional. We have to clean it regularly, provide food and water, and need a place to store supplies; all of that had to fit into a small footprint and be somewhat simple to build." It wasn't until he was showing coworkers his finished product that he decided to submit it to the Emerging Professionals competition. And his efforts paid off.



Congratulations to Josh Ridgely, AIA, and to the runners up: Jackson Den Herder, AIA, placed second with "Rietveld Sideboard Copy"; Graham Hanson, Assoc. AIA and Paulo Orlando, Assoc. AIA placed third with "Des Moines Food Hub."

Stand out | Builder Training



Register today at alliantenergy.com/standout.

This year, up your building game *and* sharpen your business skills at Builder Training.

CEUs available!

Cedar Rapids – January 16-17

Marriott Hotel

Ames – January 23-4

Gateway Hotel and Conference Center

Cost

| | |
|---|-------|
| Customer and Dealer Network members | \$99 |
| Non-customer, Non-Dealer Network | \$199 |
| Students | \$69 |

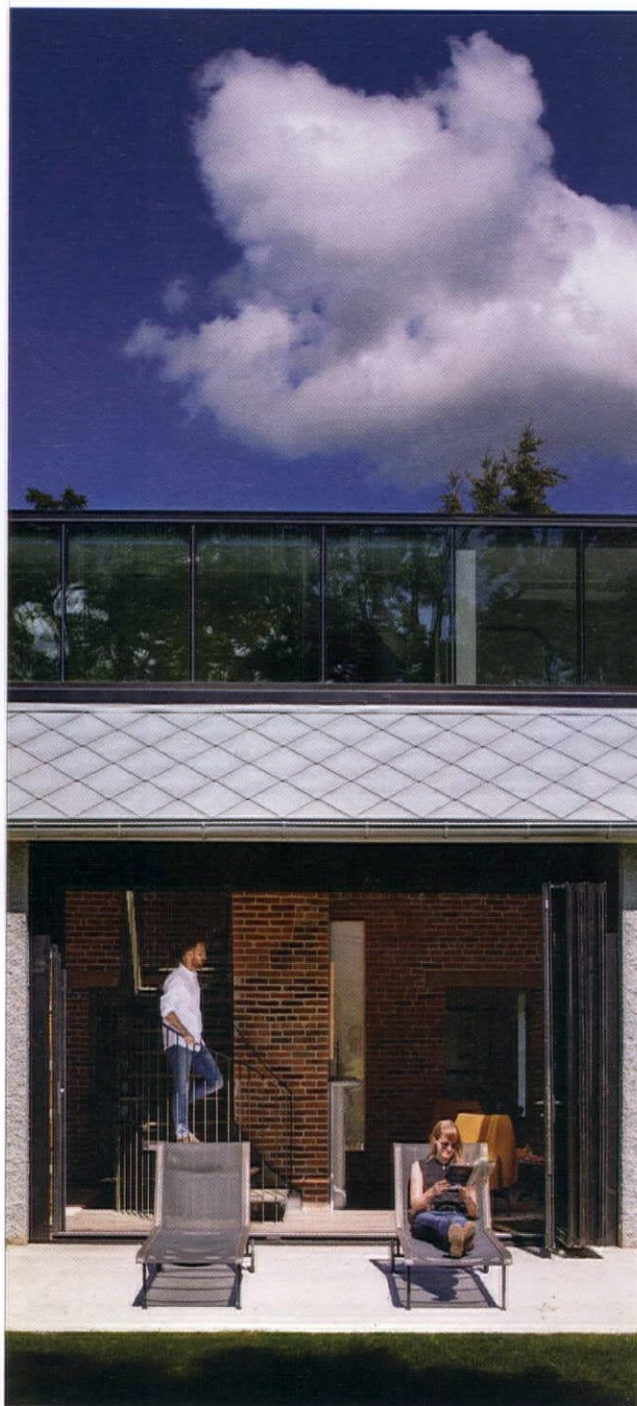
One-day pricing available online.



© 2017 Alliant Energy. E22M-0110002 1/17

NEUMANN MONSON ARCHITECTS

IOWA CITY | DES MOINES



RETREAT | RELAX | REPEAT

Leading us from the past into the future

Jessica Reinert marks her fifteenth year in leadership at AIA Iowa, reflecting on past successes and aspirations for the organization's advance into the future.

WORDS: COLE NORUM

Jessica Reinert, Hon. AIA Iowa, is excited for tomorrow. And the day after. But she makes sure to consider the past, a nod to the fifteen years she has spent with AIA Iowa and the organization's own rich history as the voice of the profession of architecture across Iowa and as a leader amongst components of the AIA. Reinert counts impacting state legislature and staying relevant in the digital age as successes during her tenure. She also looks ahead, particularly to AIA Iowa's continued outreach to lawmakers and the community as a whole. In an interview with Iowa Architect, Reinert describes these facets of her time at AIA Iowa and more in detail.

Iowa Architect: How did you start your career with AIA Iowa?

Jessica Reinert: My passion for working in a nonprofit began with my college internship and has grown since. The value of working for an association for me goes far beyond remuneration. After I started working for AIA Iowa, I quickly learned how my role had the potential to impact the careers and lives of our members and in turn impact communities across Iowa by providing support through advocacy, ongoing education for architects, and as the voice of the profession.

IA: What do you consider some of your greatest achievements in your time spent as Executive Director?

JR: Similar to other professional associations, everything at AIA Iowa is accomplished by the

partnership between the Chapter president and the executive director along with board leadership and committees, with the support of staff. Through this partnership, AIA Iowa has remained successful for over a century. Over the last 15 years, we have worked tirelessly to keep the Chapter relevant and integral to our community. We have impacted several changes in the legislature, moved the Chapter into the digital age, and expanded our outreach to the public through several initiatives, including our websites, magazine, and the Citizen Architect Program. I am very thankful to work with an outstanding group of professionals who seek out opportunities to give back to their profession, their life's work.

IA: What does it mean to you to have served the Association for the last 15 years, as Executive Director for the last five years?

JR: This opportunity to serve means a great deal to me, in fact, it has become my life's work. In this role I have the opportunity to help members expand their leadership skills, watch them grow in their career from students, to architects, and some to principals and business owners. I can't imagine myself anywhere else.

IA: In what ways have you seen AIA Iowa grow from when you began to what it is today?

JR: Over the last few years the Chapter has grown exponentially in terms of membership, programming, and financial stability. Just in the last



five years we have doubled our reserves by controlling our expenses, have had several notable achievements at the state house, and started a successful student affiliate membership that now has over 100 members. Over the last 15 years we have tripled the number of individuals in our Allied and Professional Affiliate membership categories, grown our convention exhibit hall by one-third, and increased the readership of the Iowa Architect magazine.

IA: Where would you like to see AIA Iowa head in the future?

JR: I would like to see the Chapter continue to grow its culture of advocacy. This outreach to the public and lawmakers is something that no other group or organization in our state can offer our members and it is a resource we can provide to elected officials as experts

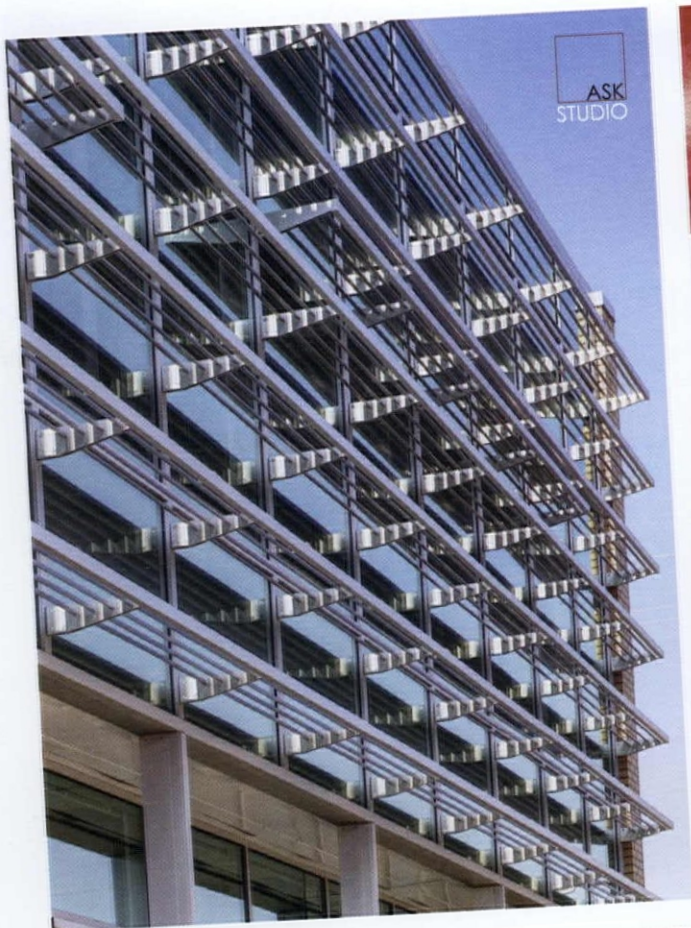
in the industry. In addition, I would like to grow our professional development programming that sets us apart from all other providers by offering quality education that our members need to continue to protect the health, safety, and welfare of Iowans.

IA: Have there been people who have contributed to your sustained success / people from whom you've sought input or guidance as Executive Director?

JR: Several people have contributed to my and the Chapter's sustained success, including the large network of other AIA Executives across the U.S., guidance from our volunteer leaders within the Chapter, and the wonderful group of staff members who I have the pleasure to work with at the Chapter — Jennifer Peters, Vicki Scott, Amy Spike, and recently retired Pamela French.

"In this role I have the opportunity to help members expand their leadership skills, watch them grow in their career from students, to architects, and some to principals and business owners. I can't imagine myself anywhere else."

— JESSICA REINERT,
HON. AIA IOWA



AIA Iowa

"In my past and present roles on the AIA Iowa Board of Trustees, I have worked with Jessica and can attest to the value she has brought to AIA Iowa. Her leadership, insight and professionalism have brought respect and distinction to our Iowa Chapter. Jessica is nationally recognized as an astute and passionate advocate for the profession of architecture."

Gary, Van Dyke, AIA, Shive-Hattery, Inc.
President, AIA Iowa



Congratulations, Jessica, for 15 years of invaluable AIA Iowa leadership!

SHIVEHATTERY
ARCHITECTURE+ENGINEERING



congratulations

Congratulations
Jessica Reinert,
Hon. AIA Iowa!

We appreciate your
15 years of leadership
and dedication.

THE WEIDT GROUP®



theweidtgroup.com

Recognizing 15 years of excellence



www.rapidsrepro.com



WINDSOR
WINDOWS & DOORS
A Woodgrain Millwork Company

Inspired by the
view

You have a vision for your project. How it looks, how it feels and most importantly, how it reflects your style.

At Windsor Windows & Doors, we're passionate about your vision and it's our mission to produce high-quality windows and doors that exceed your expectations. Countless style options, expert craftsmanship and high-performance technology – if you can dream it, we can build it. From new construction to renovation and replacement, Windsor can bring your vision to life. ***Now imagine what you can do...***

Download a FREE copy of our Windsor Product Guide at **ImagineWithWindsor.com** or visit one of your local **Gilcrest Jewett Lumber** locations to see our products in person.

1100 Alice's Road • Waukee, IA 50263 • 515.987.3600 | 5660 NE Hubbell Avenue • Altoona, IA 50009 • 515.957.0027

on the boards

Projects
In Progress

IMT Insurance Corporate Headquarters

IMT Insurance has outgrown its space with 300 employees split between two buildings. Their new facility, designed by Shive-Hattery Architecture-Engineering, will bring all its employees together and accommodates future growth. By taking an “inside-out” design approach, IMT Insurance will have a facility that meets employees’ needs and aligns with its culture and values.

The three-story building will offer 85,000 square feet with an exterior façade composed of white precast, black granite, and glass, with accents of red metal panel. A two-story atrium will serve as the heart of the headquarters, providing a large area where staff members can convene. The space will feature large windows, offering natural lighting and green space.

Each workstation will be equipped with height-adjustable work surfaces with several collaborative areas sprinkled throughout. The two-story cafe will sport a mixture of cafe, bar, and stadium seating, with views of a large, terraced patio with more seating options. Offices will feature a mix of windows and all-glass fronts, letting daylight permeate the space into open-office areas.

The lobby will feature custom-designed art walls with graphics that depict its story and history. The company’s red, black, and white diamond-shaped logo inspired several faceted design



West Des Moines, IA

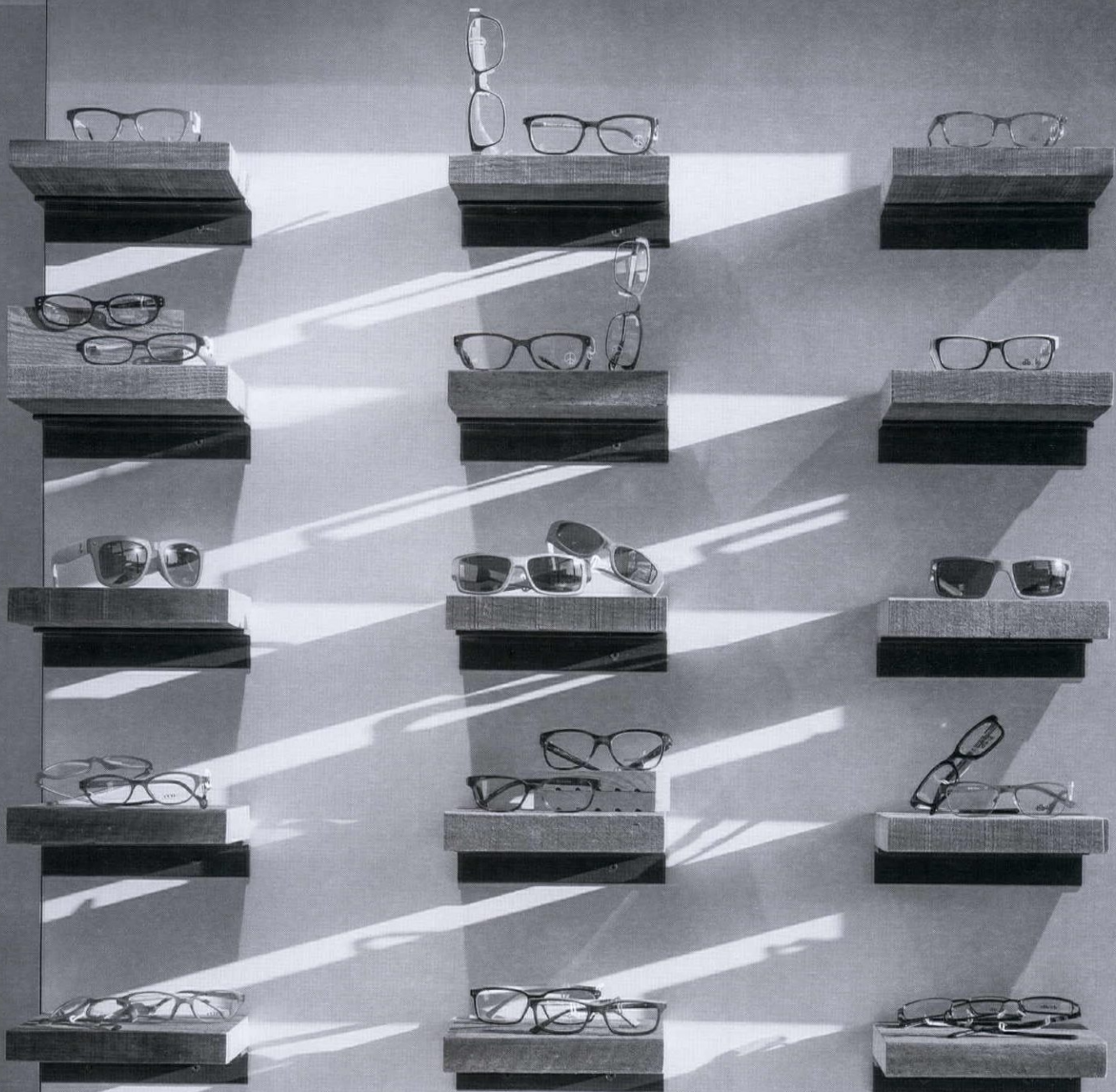
Shive-Hattery Architecture-Engineering

components, including the lighting fixtures, reception desk, and back wall of the lobby. Other amenities will include a fitness room, recreation room, and TV lounge area. A half-mile walking loop will also be integrated into the site.



MADE YOU LOOK

URBAN EYECARE & EYEWEAR



substancearchitecture

learn more about us substancearchitecture.com

AIA IOWA DESIGN AWARDS

MEET THE JURY



Anna Ives, AIA, is the managing partner at Patterhn Ives and a lecturer at Washington University in St. Louis, Missouri. She has a diverse portfolio of award-winning work focusing on higher education, healthcare, and planning. Anna approaches teaching and designing with criticality, rigor, patience, and persistence, and believes finding the complement of the two pursuits is essential. With degrees from Bryn Mawr College and Columbia University, Anna's education and background brings considerable depth to the practice of architecture. Prior to her graduate education, she studied Chinese history with a focus on economics. Compositing these interests, her thesis investigated advanced international economics as it pertains to Chinese banking and lending policies. Anna worked in offices in New York City, Philadelphia, Pennsylvania, and St. Louis, Missouri, prior to co-founding Patterhn Ives with partners Eric Hoffman and Tony Patterson. In 2009, Anna was among 30 outstanding St. Louis-area business professionals selected by the St. Louis Business Journal to receive the 30 Under 30 Award. Anna's thoughtful approach to design, balanced with her innate ability in management and language, consistently garners trust and appreciation among her many clients and colleagues.



Dan Treinen, AIA, is a design leader at BWBR in St. Paul, Minnesota. Dan is a South Dakota native and received his Bachelors of Architecture from Kansas State University's College of Architecture, Planning, and Design in 1992. After receiving his degree, he served as a Peace Corps volunteer for two years in the Republic of Moldova, where he taught English and design in the Department of Architecture at the Technical University of Moldova. Prior to joining BWBR, Dan spent more than a decade with Kohn Pedersen Fox in New York City, where his work took him around the nation and world for projects such as the MoMA expansion and renovation in New York City, Forum 66 mixed-use development in Shenyang, China, and multiple projects for New Songdo City, South Korea while living there. Dan also spent a year as a visiting teaching fellow in the Department of Architecture at the University of Bath in Bath, England.



E.B. Min, AIA, is the San Francisco-based principal of Min | Day and a director of the AIA San Francisco Chapter. An honors graduate of Brown University with dual concentrations in art history and studio art, she began her architectural studies as a cross-registered student at Rhode Island School of Design. She received her Master of Architecture from the University of California at Berkeley and is a licensed architect in California. E.B.'s experience in the landscape architecture office of Delaney and Cochran nurtured her interest in the integration of landscapes and buildings. E.B. has taught at U.C. Berkeley and is an adjunct professor in the Master of Architecture program at California College of the Arts in San Francisco. Founded in 2003 in San Francisco and Omaha, Min | Day draws on E.B. Min and Jeffrey L. Day's backgrounds in art, landscape, and architecture to provide informed, flexible design for a wide range of clients, sites, and projects. The firm has garnered numerous awards, including the 2007 AIA California Emerging Talent award, New Practices San Francisco 2009, California Home & Design's 2009 Ten to Watch, Residential Architect's 2010 Rising Star, Architectural Record Magazine's 2009 Design Vanguard, and the Architectural League of New York's 2016 Emerging Voices.



Elizabeth Whittaker, AIA, is the founder and principal of MERGE architects. She has served on the Boston Society of Architects/AIA Board of Directors, Rotch Traveling Fellowship Committee, and Nominating Committee. She was a recipient of the 2015 AIA Young Architects Award, and Merge Architects was honored with the 2014 Design Vanguard Award from Architectural Record and the 2015 Emerging Voices Award from the Architectural League of New York City. Elizabeth graduated from Harvard University's Graduate School of Design with distinction, where she received numerous awards during her graduate studies, including the Core Studio Prize, the Faculty Design Award, and the John E. Thayer Award for overall academic achievement. Elizabeth approaches architecture as a discipline embedded in both practice and academia. She has taught design studios in several architecture programs, including Massachusetts Institute of Technology, Northeastern University, the Boston Architectural College, and Harvard University, where she was also lead faculty in architecture in their Career Discovery Summer Program. Elizabeth currently holds a faculty position as associate professor in the Practice of Architecture at Harvard University's Graduate School of Design.



Steven Dwyer, AIA, is a design principal and vice president at Hammel, Green and Abrahamson (HGA) in Minneapolis, Minnesota, where he leads work in the Arts, Community, and Education Group. In his 17 years with HGA, he has garnered a multitude of regional, national, and international recognition, making him one of the firm's prominent design voices elevating the firm's work and reputation. In 2011, he received the AIA National Young Architects Award, and the projects he has led have been recognized with numerous awards, including several AIA regional and national Honor Awards, the Chicago Athenaeum's American Architecture Award, Woodworks Wood Design Honor Award, the Wood Design and Building Award, and the SCUP Excellence in Campus Architecture Honor Award. In 2016, ArchDaily named his work on the Whitetail Woods Camper Cabins among the Top 100 American Architecture Projects in the past 10 years. He has been a regular guest critic and adjunct instructor at the University of Minnesota's College of Design and has participated in design reviews for Washington University in St. Louis, Missouri, the Dunwoody Institute in Minneapolis, Minnesota, and the University of Wyoming. He's a regular committee member on AIA Minnesota's Committee on Design and chaired its award-winning publication Architecture Minnesota. Steven originally studied music performance and played professionally before beginning his studies in architecture. Still active musically, this background, as well as an undergraduate education in art and design, continues to influence his design philosophies.



James Garrett Jr, AIA, is a registered architect in the states of Minnesota and New York. He holds a Bachelor of Arts in Architecture from the College of Environmental Design at the University of California – Berkeley and a Master of Architecture from the Parsons School of Design. In 2015, he was awarded the American Institute of Architects Minnesota Chapter Young Architect Award. His creative work and art installations have been shown in New York City and Minneapolis, Minnesota, where he successfully completed a residency program entitled "The Artist Is In" as part of the Marks of Genius Exhibition in 2014 at the prestigious Minneapolis Institute of Art. In 2002, he co-founded 4RM+ULA, a design firm focused on transit design, transit-oriented development, cultural, and urban infill redevelopment projects. He currently serves on the Metropolitan Council for Livable Communities and Transit Oriented Development Advisory Committees.



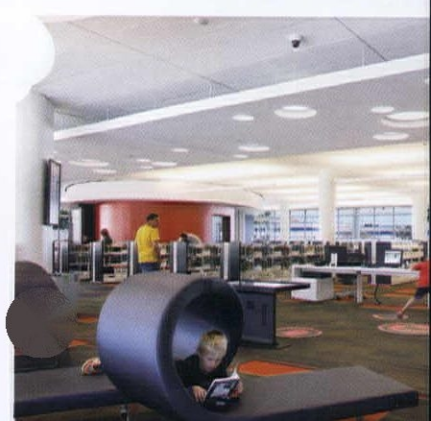
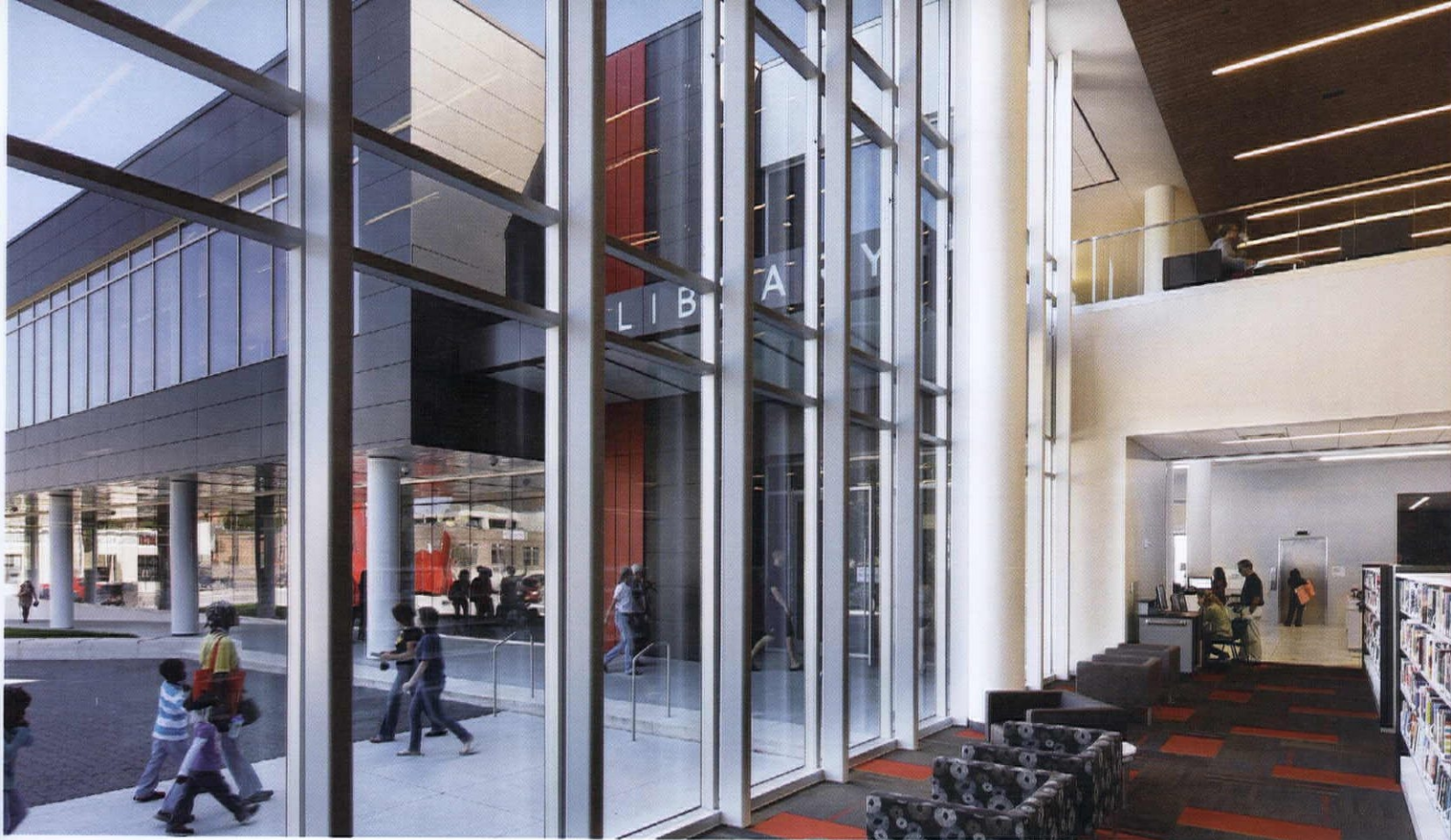
Marc Swackhamer, Assoc. AIA, is a co-founding principal of HouMinn Practice and professor and head of the School of Architecture at the University of Minnesota. HouMinn's work has been published and exhibited internationally and recognized with many awards, including a 2014 Architect Magazine R+D Award and a 2014 Core77 Design Award for prototype research. Marc is also a founding member of Minn-Lab, an interdisciplinary design lab, which won the 2017 City of Minneapolis Creative City Challenge with its project Orbacles. Marc studies the relationship between performance and ornament through the lenses of digital production and fabrication technologies, and has developed significant research in the area of biomimetics and its relationship to design. He co-authored (with Blaine Brownell) the book "Hypernatural: Architecture's New Relationship with Nature" in 2015. Marc serves on the Association for Computer Aided Design in Architecture's Board of Directors and is an associate member of the University of Minnesota's Digital Design Consortium, where he conducts research in the area of digitally produced modular wall systems. He received degrees from the University of Cincinnati and Rice University.

CEDAR RAPIDS PUBLIC LIBRARY

EXCELLENCE IN SUSTAINABLE DESIGN, HONOR ARCHITECT: OPN ARCHITECTS **LOCATION:** CEDAR RAPIDS, IOWA **SIZE:** 94,000 SF **COST:** \$24,128,634

The success of the Cedar Rapids Public Library demonstrates the impact a next-generation library can have on a community. After the floods of 2008 destroyed the existing library, OPN Architects, the library staff and board, and community seized the opportunity to reinvent library services and create a new vision for the future library. The new library creates an urban plaza, and positions the vibrant, active library spaces so the large expanses of glass highlight the services to the community. The library further embraces the sense of community with a 20,000-square-foot green roof that was a key part of the LEED Platinum certification, and has become a go-to spot.



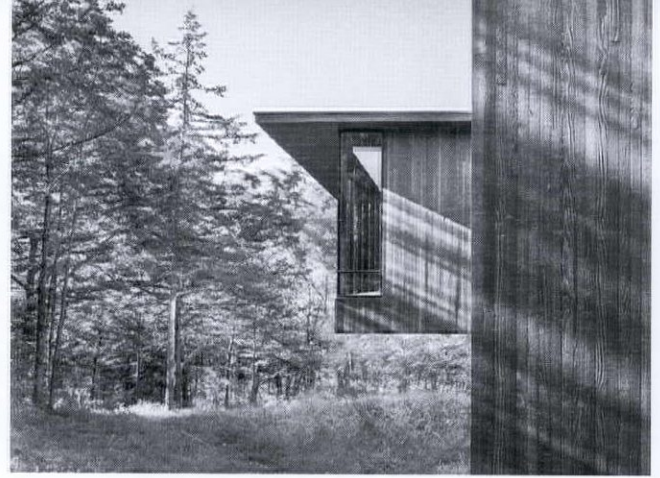


RAVINE RESIDENCE

EXCELLENCE IN DESIGN, HONOR ARCHITECT : BNIM **LOCATION** : RURAL IOWA **SIZE** : 8,795 SF

Located on an acreage in rural Iowa, the Ravine House draws its inspiration from the topography and vegetation of its forested site to create an experience of living within the landscape. A transparent social space elevated in the tree canopy bridges the ravine below, preserving this natural site feature and creating a strong form that accentuates the topography. This social space serves as the core of the house, connecting the entryway on the west to the bedrooms on the opposite bank. As the house wraps through the undulating site, it presents a collection of carefully curated experiences. Rigorous detailing and a restrained material palette create a taught canvas for the play of light and shadow throughout the course of days and seasons.





AIA IOWA DESIGN AWARDS

PACIFIC CENTER CAMPUS AMENITIES BUILDING

EXCELLENCE IN DESIGN, HONOR ARCHITECT: BNIM **LOCATION:** SAN DIEGO, CALIFORNIA **SIZE:** 407,000 SF

The new services building is an interactive, porous facility that promotes connection on multiple scales: it connects employees to services that support wellbeing; it connects employees to one another; and it brings together the existing buildings within the overall campus development. Intricately interwoven within the surrounding landscape, the building melds innovative workplace design with the benefits of being surrounded by nature. Several drivers were established to create a more productive workforce: providing employees with connections to nature through ample natural daylight, unobstructed views, natural ventilation, and a trail system connecting the adjacent Lopez Canyon. These workplace strategies create a richer social experience for more productive, meaningful interactions and provide the opportunity to engage with others through spatial organization.



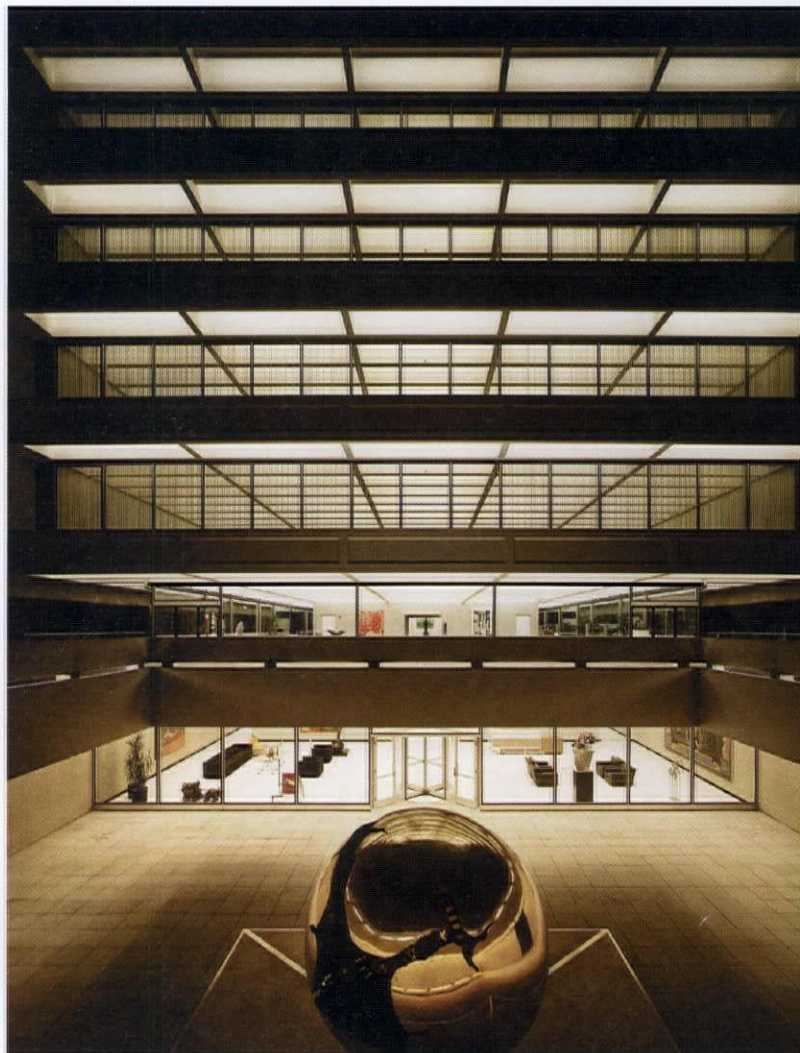


American Enterprise Group Corporate Headquarters Restoration

EXCELLENCE IN DESIGN, MERIT
ARCHITECT : BNIM

LOCATION : DES MOINES, IOWA
SIZE : 154,000 SF

Originally designed by Gordon Bunshaft at SOM, this iconic 1960s office building has racked up many design accolades. As the building aged, the owner consciously respected the importance of its design, and consequently, most of the significant architectural characteristics are still intact almost 50 years later. However, a number of finishes and materials had deteriorated, and the original building systems were extremely problematic. The building underwent a renovation in 2015 to address these issues and bring the workspaces up to date. A majority of the original furnishings, selected or custom designed by Bunshaft and SOM, continue to be used in harmony with open office workstations that provide a modern workplace, and the significant art collection remains a critical part of the experience.





Boehringer Ingelheim

EXCELLENCE IN DESIGN, MERIT

ARCHITECT: OPN ARCHITECTS

LOCATION: AMES, IOWA

SIZE: 52,088 SF

BUDGET: \$22,000,000

Conceived as an object in the landscape surrounded by prairie grass and corn fields, this laboratory and office building's simple massing and color palette complement and create contrast with the environment. Inspired by company leadership's desire for the facility to reinforce their corporate mission of collaboration, the design is transparent, connected, efficient, and responsive to its environment and program. A bright two-story lobby serves as a social connector and meeting space for employees and visitors. Views into the lab space challenge convention and offer a symbolic reminder of the company's mission to inspire innovative collaboration between lab and office.

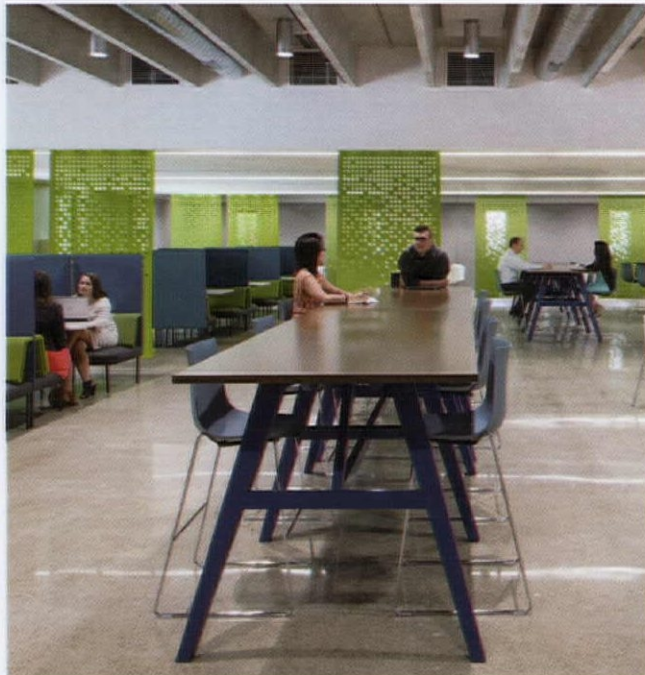
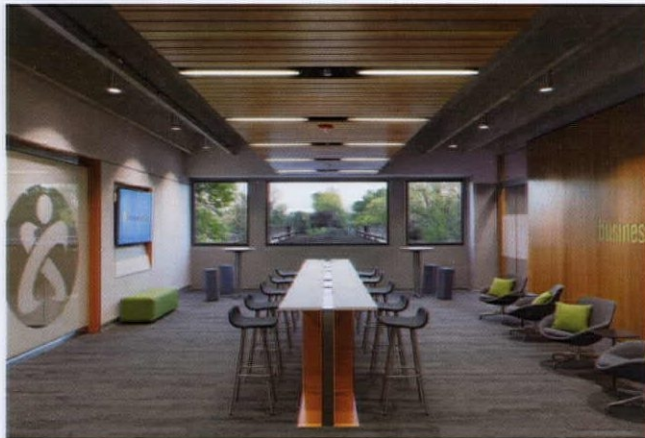


Businessolver

EXCELLENCE IN DESIGN, MERIT
ARCHITECT : SUBSTANCE ARCHITECTURE

LOCATION : WEST DES MOINES, IOWA
SIZE : 93,000 SF

After relocating to the Ashworth Tower in West Des Moines in 2010, Businessolver's rapid expansion continued, and by 2016, the business had taken over all five floors. Ashworth Tower was a typical office tower of the times with a central elevator/mechanical/restroom core, with the remainder divided into suites subdivided into private offices, conferences, and the likes. The dated building was in dire need of a remodel. The remodel removed all interior walls and drop ceilings except to create a more open work space. A new client entrance was designed on the south, including a cantilevered canopy to protect a drive-through drop-off. A smaller scale canopy and new entrance was added on the north for employees.





HNI Corporate Headquarters

EXCELLENCE IN DESIGN, MERIT

ARCHITECT: NEUMANN MONSON ARCHITECTS

LOCATION: MUSCATINE, IOWA

SIZE: 60,000 SF

COST: \$12,000,000

Founded in 1944, HNI molded itself on a mission to create long-term value, provide a great place to work, and treat everyone with fairness and respect. However, the company's facility, which straddles the main entry to downtown, presented the main street with windowless walls and corrugated steel. The renovation razed two warehouses to a plaza on axis with the company's historical headquarters. The company's belief in transparent integrity translates to the design with a wall of windows looking into the heart of the corporation. Original materials reappear throughout, from wall finishes to furniture to stair treads.

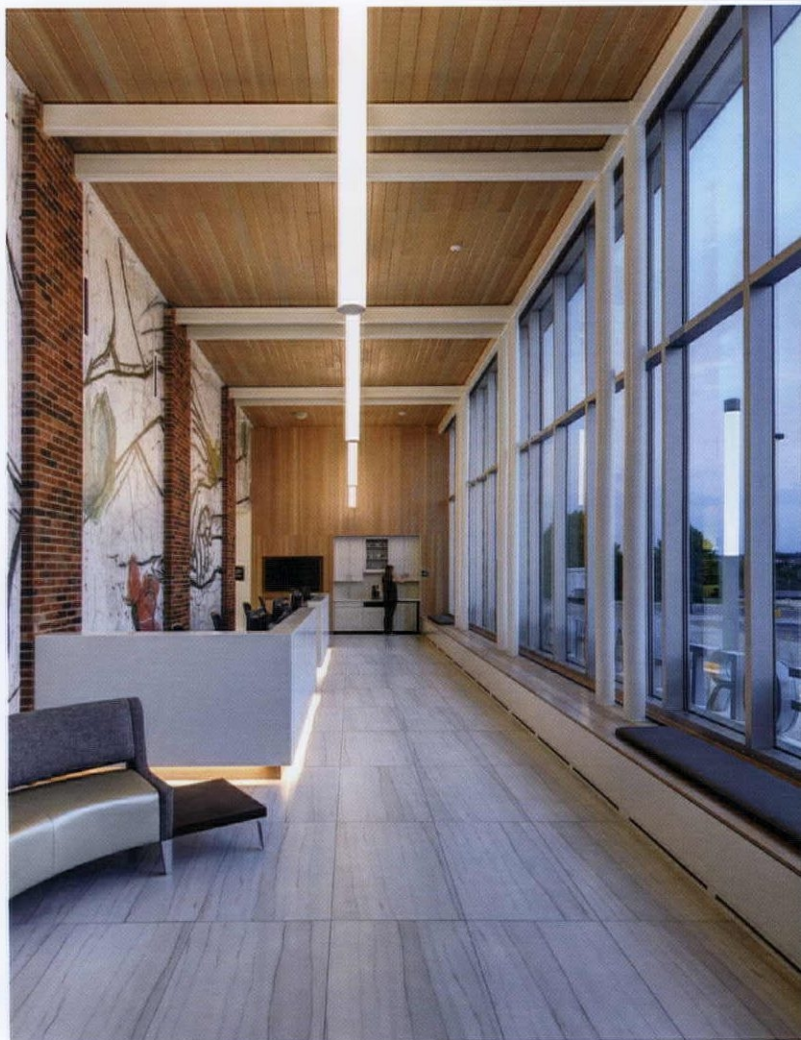


Mercy Women's Center

EXCELLENCE IN DESIGN, MERIT
ARCHITECT: INVISON ARCHITECTURE
LOCATION: CLIVE, IOWA

SIZE: 31,280 SF
COST: \$6,272,259

The design of the Mercy Women's Center expansion was focused on enhancing the patient experience. The dramatic height of the addition, transparent glass, and quality interior finishes promote a sense of confidence in the care patients are receiving by providing an open, bright, and welcoming space. The arrival experience is further impacted through large-scale artwork created by a local female artist. Once inside, separate and dedicated patient and provider zones and paths of travel allow patients to be serviced quickly and efficiently. Use of natural light-filled corridors and wayfinding graphics support self-direction for patients. Additional amenities in the Center include a meeting room for educational purposes.





Foster Road Retreat

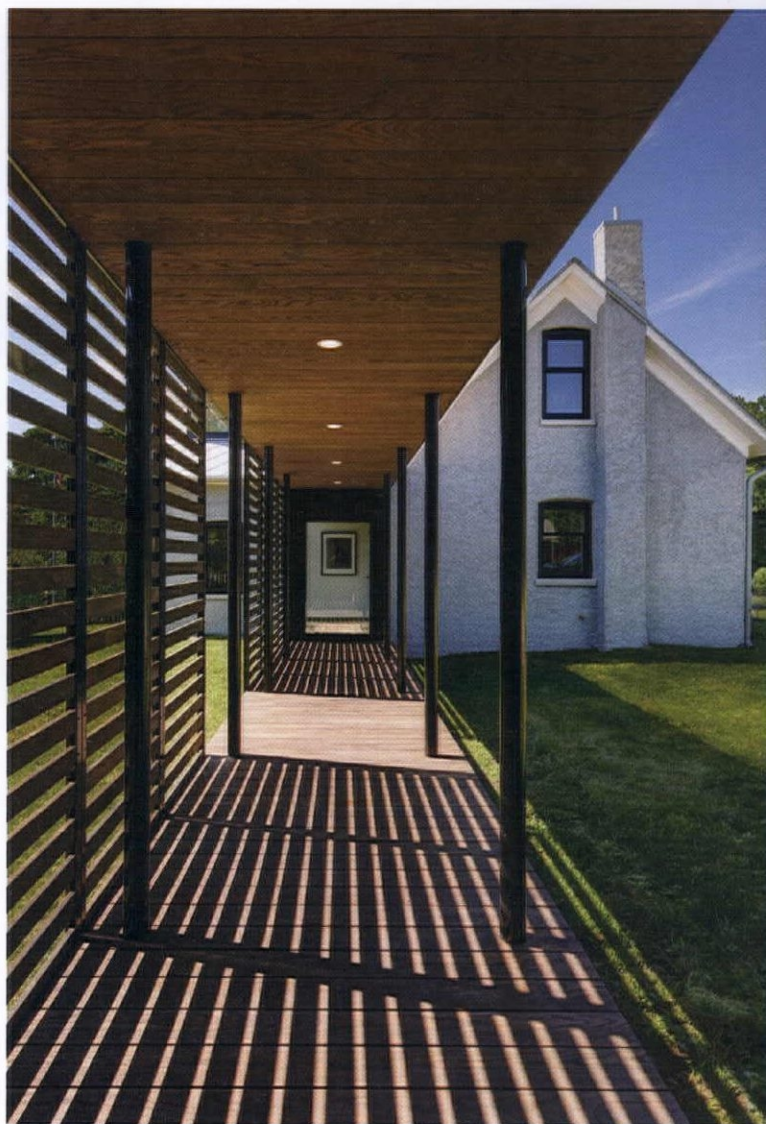
EXCELLENCE IN DESIGN, MERIT

ARCHITECT : NEUMANN MONSON ARCHITECTS

LOCATION : IOWA CITY, IOWA

SIZE : 2,063 SF

This retreat for an urban developer integrates minimalist elements into a modest 1850s farmhouse. Over the years, renovations and additions had cloaked the original design elements. The building's modest exterior belies the spaciousness of the main floor. Masonry and timber were left exposed, while new surfaces were painted varying shades of white. Details are minimized to let the wood, brick, steel, and light take the mainstage. A remnant of the original masonry fireplace anchors the composition, skirted by a suspended steel stair.





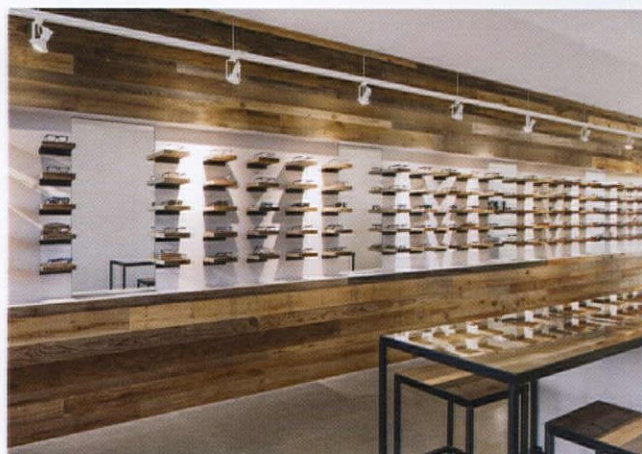
University of Iowa Hospitals & Clinics Centralized Emergency Power Generation Facility

EXCELLENCE IN DESIGN, MERIT
ARCHITECT: SHIVE-HATTERY
ARCHITECTURE-ENGINEERING

LOCATION: IOWA CITY, IOWA
SIZE: 10,876 SF
COST: \$19,460,000

The demands of an expanding UIHC medical campus led planners to seek a remote site for a new emergency power facility to serve the Stead Family Children's Hospital. Sited on a small pocket of land between a commuter parking lot and the Finkbine Golf Course, the architect was challenged to design the smallest possible footprint. The design team developed an efficient plant layout that features two double-loaded ventilation shafts that meet the massive air flow requirements of the generators without increasing the building footprint.





Urban Eyecare & Eyewear

EXCELLENCE IN DESIGN, MERIT

ARCHITECT : SUBSTANCE ARCHITECTURE

LOCATION : WEST DES MOINES, IOWA

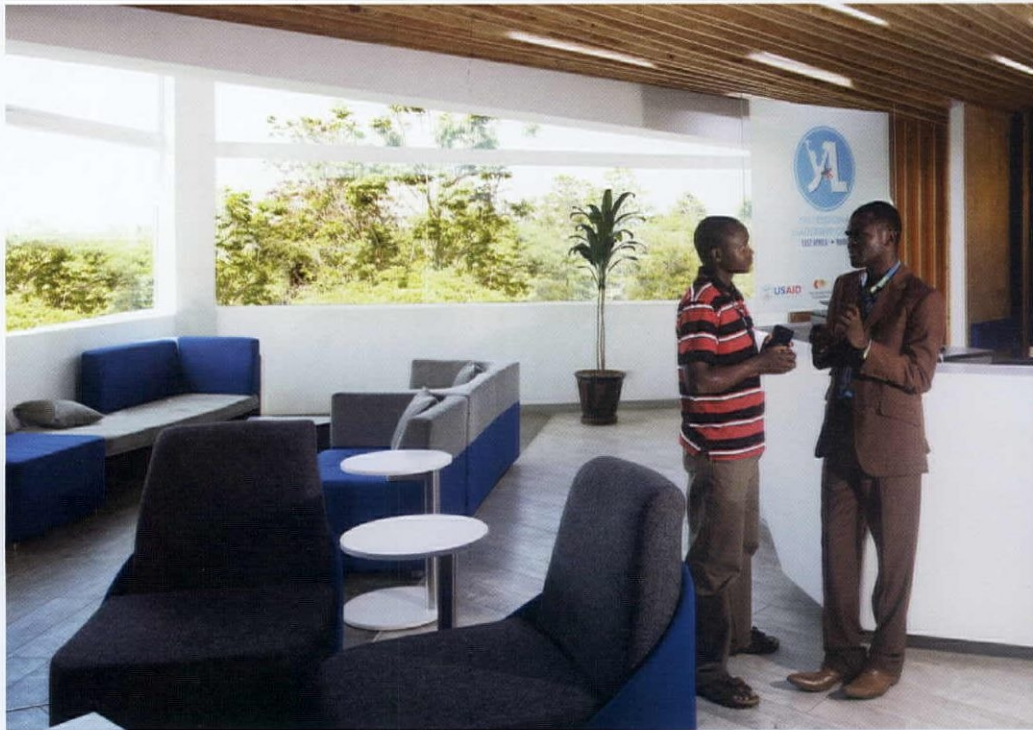
SIZE : 2,000 SF

Inserted between two storefronts of a mixed-use structure, Urban Eyecare & Eyewear required a design solution that allowed entry and visibility from both sides of the building. The interior space is divided lengthwise into two bays: public and private. An open reception area lined with an illuminated reclaimed wood wall used to display eyewear allows views and daylight directly through the space. Exam rooms, private offices, and adjacent support spaces are separated by a folding white gallery wall. Custom steel and wood millwork rigorously follow the module of the support spaces and the 250 custom reclaimed wood display shelves.

YALI Regional Leadership Center

EXCELLENCE IN DESIGN, MERIT ARCHITECT: DLR GROUP **LOCATION:** NAIROBI, KENYA **SIZE:** 7,000 SF

DLR Group and MASS Design Group alongside Deloitte Consulting partnered with the U.S. Agency for International Development to design the Nairobi Regional Leadership Center. The Center is part of President Barack Obama's Young African Leaders Initiative (YALI). The Nairobi Regional Leadership Center is striving to "improve the quality and availability of leadership training programs and professional development opportunities" for African leaders by "engaging young leaders from a wide range of organizations and backgrounds with a diversity of experiences." DLR Group and MASS designed the dynamic new Regional Center as part of the Chandaria Business Incubation and Innovation Center building at Kenyatta University. The design concept explores the intersection of modern technology with traditional, indigenous materials and vernacular to create a collaborative learning environment that supports the active-learning approaches necessary to prepare students for today's demanding work environments.



COMMERCIAL NEW CONSTRUCTION PROGRAM

AS A PROGRAM PARTICIPANT YOU WILL RECEIVE THE FOLLOWING COMPLIMENTARY SERVICES:

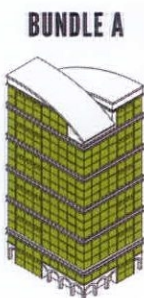


- A customized energy model simulating how energy will be used
- Assistance identifying and evaluating energy-saving strategies
- Analysis of energy costs and paybacks
- Financial incentives to help offset the cost of implementing energy-saving strategies

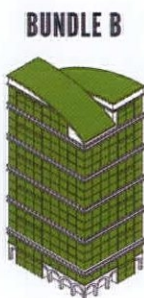
YOUR PROJECT



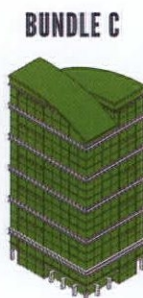
The energy consultants will create virtual versions of your building to help determine which bundle of energy efficiency strategies makes the most sense for your project.



BUNDLE A



BUNDLE B



BUNDLE C

| | | | |
|------------------------|-----------|-----------|-----------|
| Implementation Cost: | \$136,016 | \$203,404 | \$261,021 |
| Utility Rebate: | \$27,626 | \$37,691 | \$60,795 |
| Annual Energy Savings: | \$14,028 | \$17,302 | \$25,156 |
| Payback Period | 7.7 years | 9.6 years | 8 years |

*It pays to
make energy
efficiency part
of the plan.*

WHY SHOULD I PARTICIPATE?



- Receive fast and reliable energy analysis
- Compare multiple combinations of building systems and energy-saving strategies to see the impacts to your future energy bills
- Have energy questions answered by a dedicated team of knowledgeable consultants
- Receive rebates based on kWh and therm savings above code, as predicated by the energy model

Contact the program administrator, The Weidt Group®:

877-939-1874



alliantenergy.com/cnc

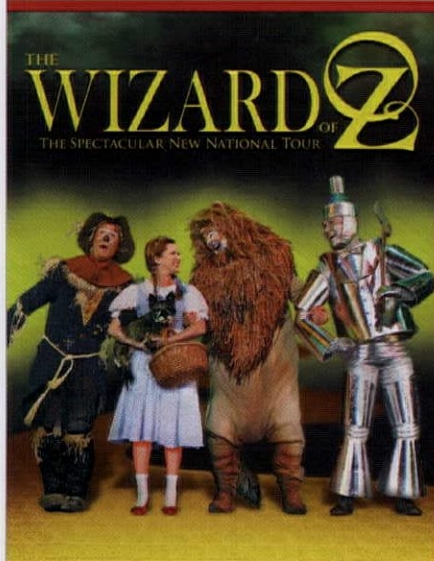


blackhillsenergy.com/iowacnc

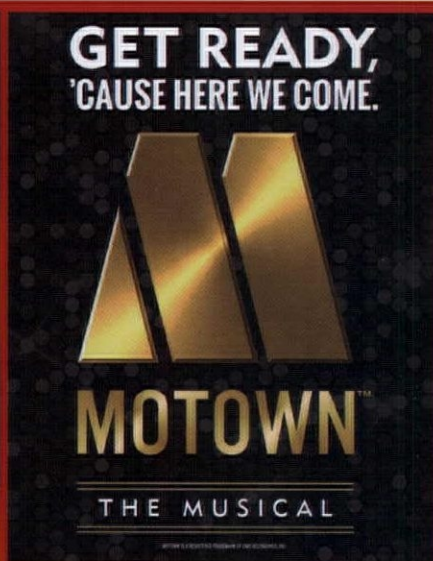


midamericanenergy.com/iowa-cnc

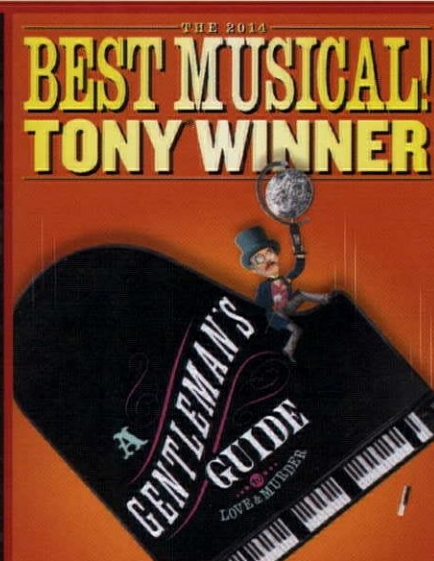
BROADWAY COMES TO STEPHENS AUDITORIUM!



TUESDAY, JANUARY 30



WEDNESDAY, FEBRUARY 28



TUESDAY, MARCH 6



Stephens Auditorium
2017-2018 Performing Arts Series

IOWA STATE UNIVERSITY™ | www.center.iastate.edu | 515.294.2479

BUY YOUR TICKETS TODAY!

www.center.iastate.edu or ticketmaster.com

Iowa State Center Ticket Office

Ticketmaster: 1-800-745-3000

Group Sales: 515-294-2479 (10 or more tickets)

**TICKETS
START
AT \$25!**

Present this ad for one
FREE non-alcoholic
beverage at the show!

VenuWorks ia



Historic Park Inn

7 West State Street • Mason City, IA | 641.422.0015 | historicparkinn.com

*Last remaining Frank Lloyd Wright
designed and built hotel in the world.*

1910
LOUNGE

FINE DINING
& LOUNGE

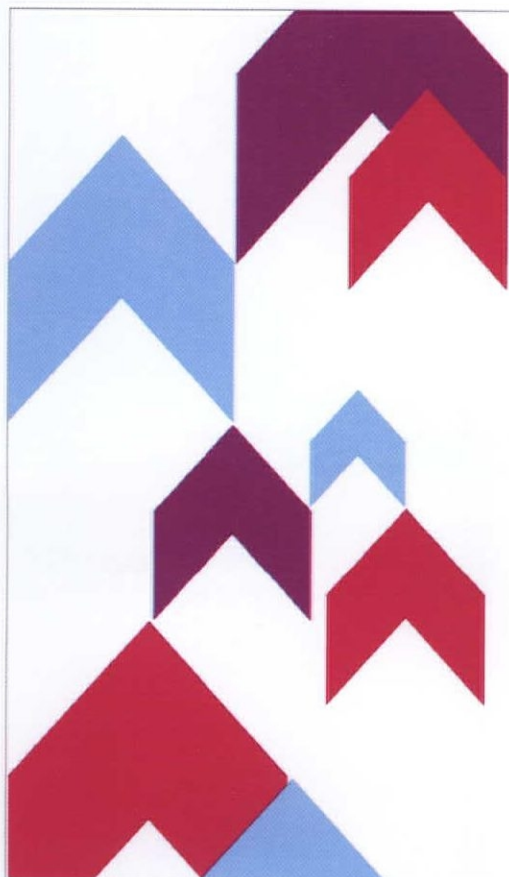
1910
GRILLE

8,000 SQ. FT. OF MEETING SPACE

27 UNIQUE SUITES

Listed in the National Registry of Historic Places





Our 2017 AIA Iowa Design Award Winners are moving up

take a closer look at the winners at IowaArchitecture.org today



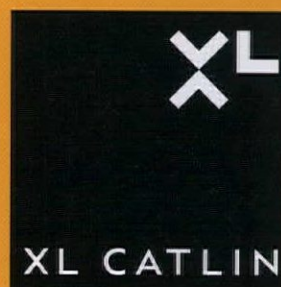
LOOKING FOR MORE VALUE IN ONE POLICY? TALK TO US.

XL Catlin's program for design professionals offers 3 areas of protection:

- + Professional Errors & Omissions
- + Privacy/Network Security Liability and Data Breach coverage
- + Employment Practices Liability

PLUS reduce your risk with online education from XL Catlin's Learning Management System and *XL Catlin's Contract eGuide*. What's more, your firm can earn premium discounts for improved risk management practices.

MORE THAN PAPER. PARTNERS.



Contact
Paula Dixon
PDixon@holmesmurphy.com

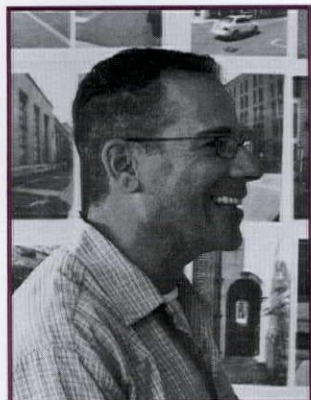
Nick Maletta
NMaletta@holmesmurphy.com

800 247 7756
www.holmesmurphy.com

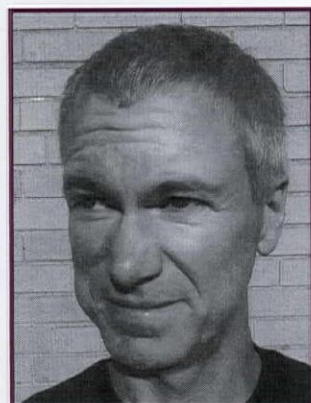
XL Catlin is the global brand used by XL Group Ltd's insurance subsidiaries. In the US, the insurance companies of XL Group Ltd are: Catlin Indemnity Company, Catlin Insurance Company, Inc., Catlin Specialty Insurance Company, Greenwich Insurance Company, Indian Harbor Insurance Company, XL Insurance America, Inc., and XL Specialty Insurance Company. Not all of the insurers do business in all jurisdictions nor is coverage available in all jurisdictions.

AIA AWARDS CENTRAL STATES REGION

MEET THE JURY



Joseph N. Biondo, FAIA, graduated from Kansas State University and pursued a career with Bohlin Cywinski Jackson Architects, where he worked closely with Peter Bohlin, an AIA Gold Medal recipient. In 1996, he established Joseph N. Biondo Architects, where he was able to redefine, solidify, and put his personal design philosophy into practice. In 2003, Joseph joined Spillman Farmer Architects, where he has brought design excellence to the forefront. A passionate practitioner of the art and craft of architecture, Joseph is actively involved in advancing the profession, serving as design juror and visiting professor for some of the country's most notable architecture programs.



Jules Dingle, AIA, is a principal and founding partner at DIGSAU, a Philadelphia, Pennsylvania, design firm with a diverse mix of project types and a broad view of architecture. Since its founding 10 years ago, the firm has been recognized with 26 design awards from the AIA and was named one of North America's Emerging Voices by the Architectural League of New York in 2013. Jules has taught design studios at Temple University and the University of Pennsylvania Graduate School of Design, and has served as a guest critic at numerous design schools. He regularly presents the firm's work at universities, conferences, and public lectures. In 2012, he was recognized with a Young Architect Award from the AIA Philadelphia Chapter.



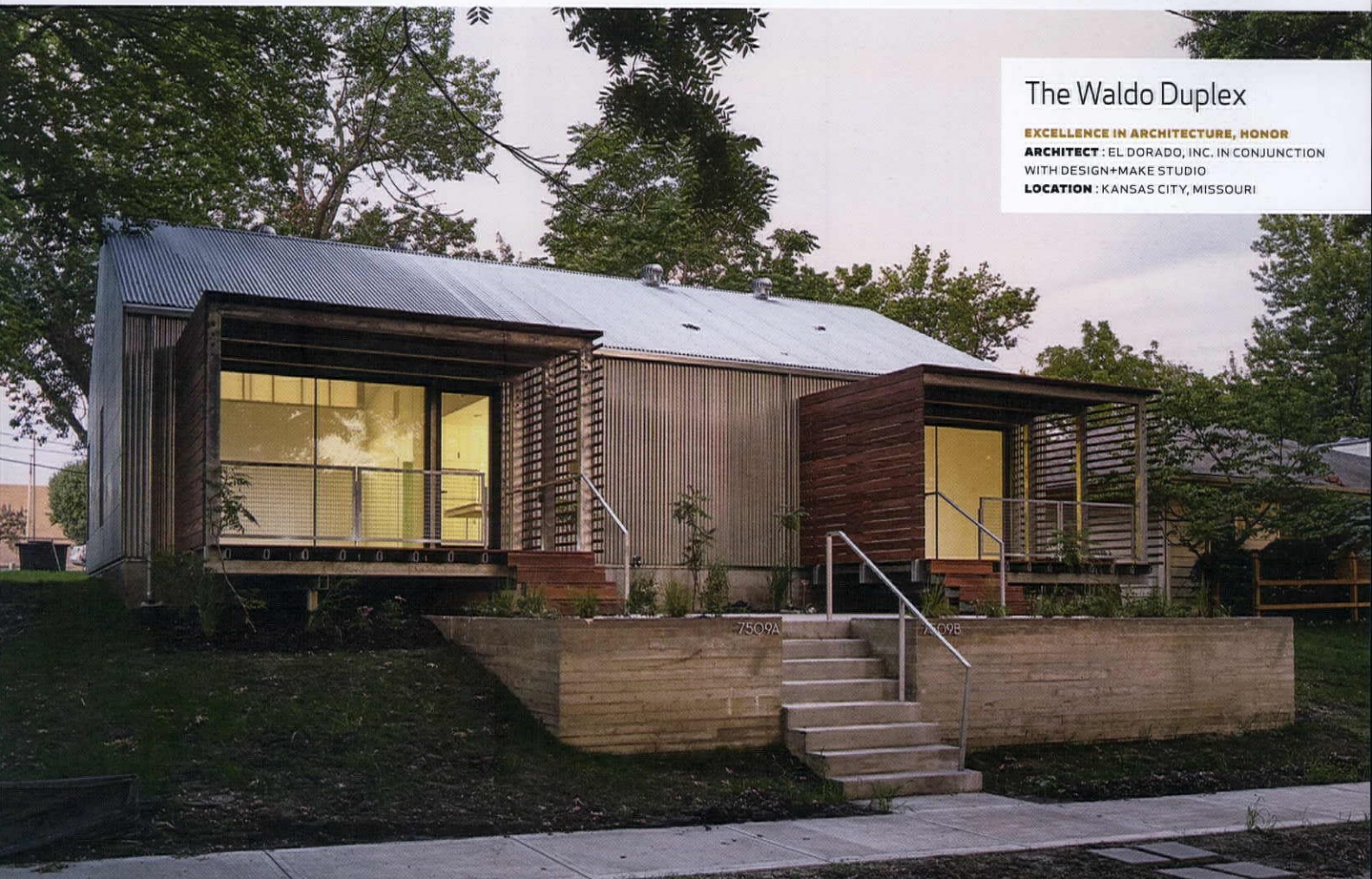
Theresa Ward Thomas, AIA, is a senior associate at Bohlin Cywinski Jackson, Wilkes-Barre, Pennsylvania. She received her bachelor of architecture degree from The Cooper Union for the Advancement of Science and Art in New York City, and prior to that studied at the London Architectural Association. Theresa started the AIA NEPA Annual Architectural Film Screening (a major conduit for funding the AIA NEPA Annual Scholarship); coordinated a two-day Downtown Charrette with Diamond City Partnership; and participated in design juries for AIA Pennsylvania chapters. She is committed to holistic design, starting with initial project programming and continuing through development of way-finding and donor signage that is integral to the building's architecture.



Blue Barn Theatre & Boxcar 10

EXCELLENCE IN ARCHITECTURE, HONOR

ARCHITECT : MIN | DAY **LOCATION** : OMAHA, NEBRASKA



The Waldo Duplex

EXCELLENCE IN ARCHITECTURE, HONOR

ARCHITECT : EL DORADO, INC. IN CONJUNCTION
WITH DESIGN+MAKE STUDIO
LOCATION : KANSAS CITY, MISSOURI

One Place at Riverfront Crossings

EXCELLENCE IN ARCHITECTURE, MERIT

ARCHITECT : NEUMANN MONSON ARCHITECTS

LOCATION : IOWA CITY, IOWA

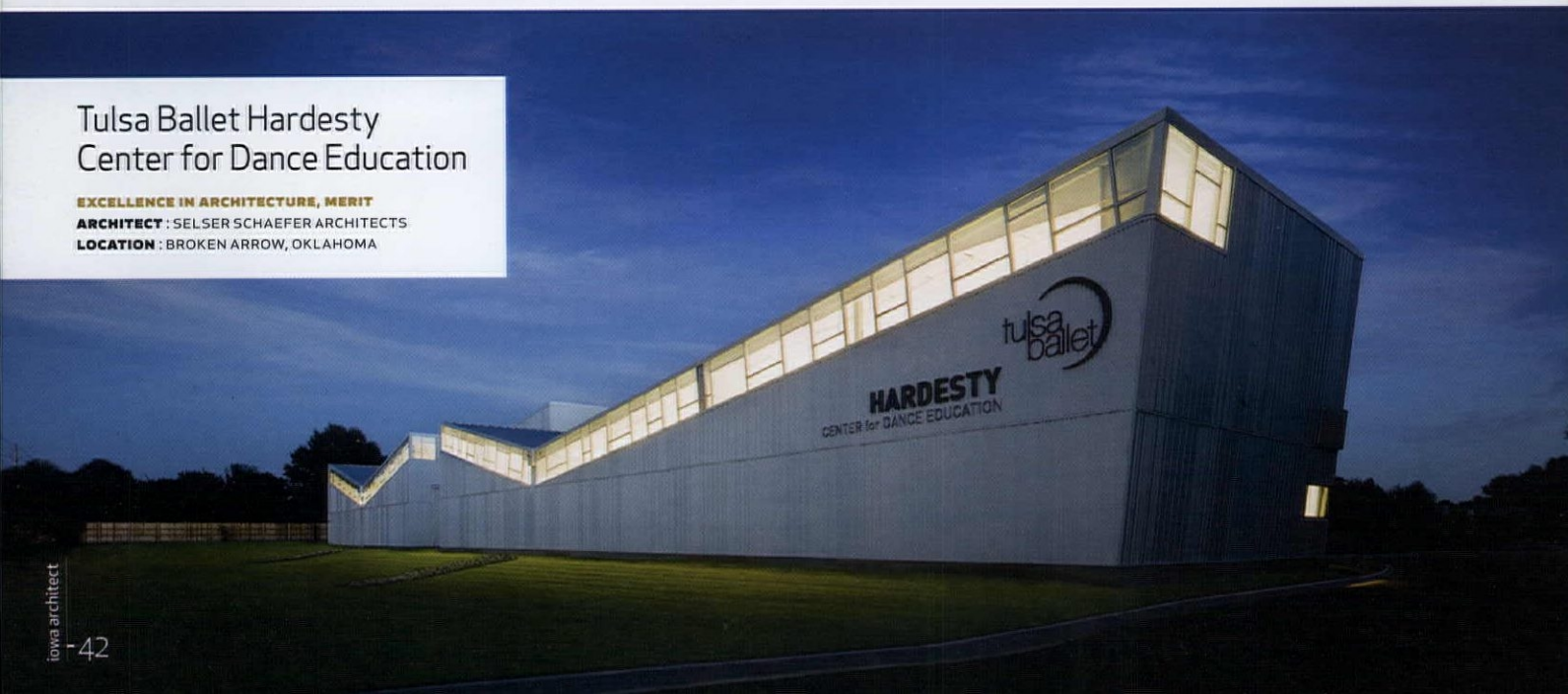


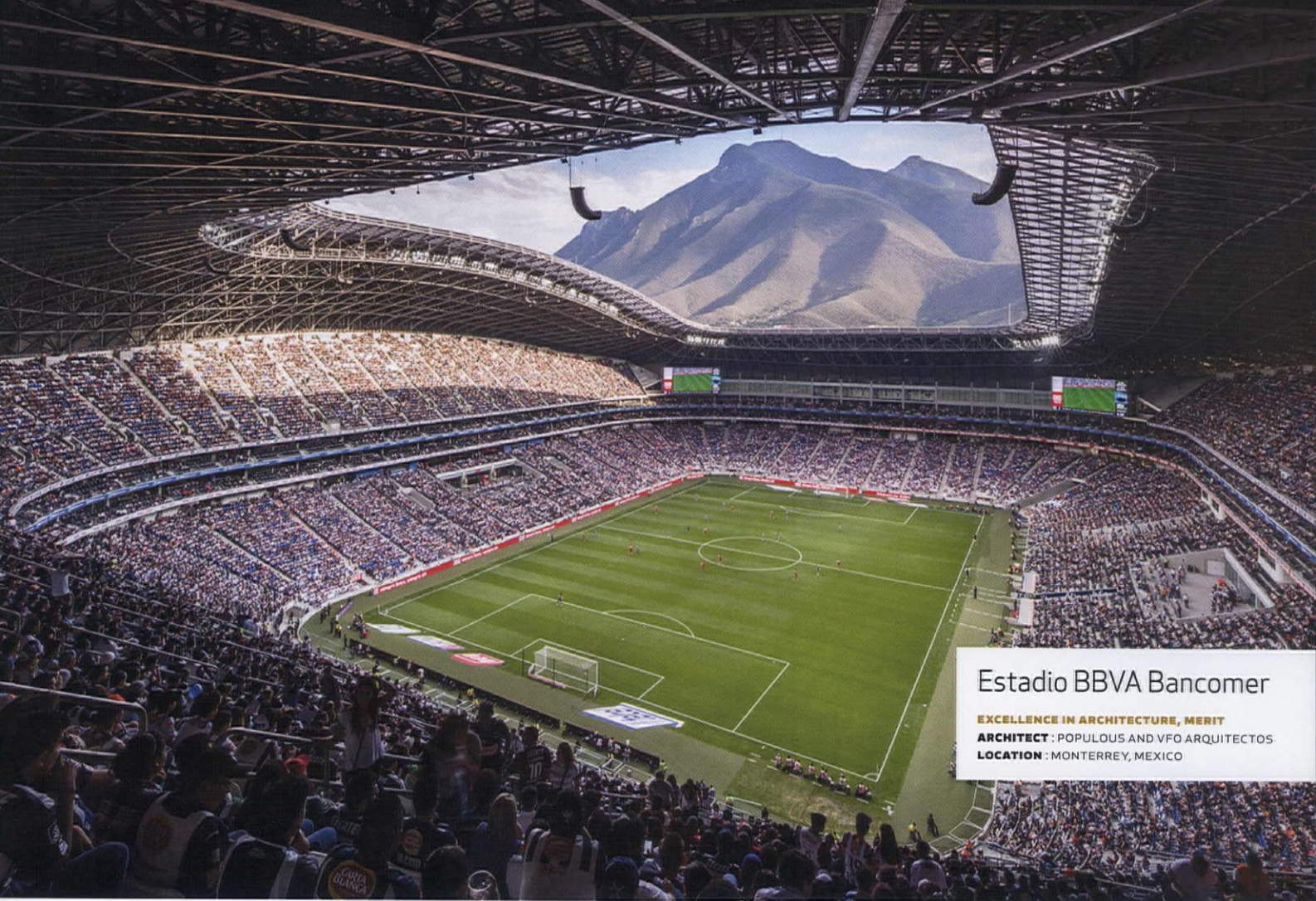
Tulsa Ballet Hardesty Center for Dance Education

EXCELLENCE IN ARCHITECTURE, MERIT

ARCHITECT : SELSER SCHAEFER ARCHITECTS

LOCATION : BROKEN ARROW, OKLAHOMA





Estadio BBVA Bancomer

EXCELLENCE IN ARCHITECTURE, MERIT

ARCHITECT : POPULOUS AND VFO ARQUITECTOS

LOCATION : MONTERREY, MEXICO

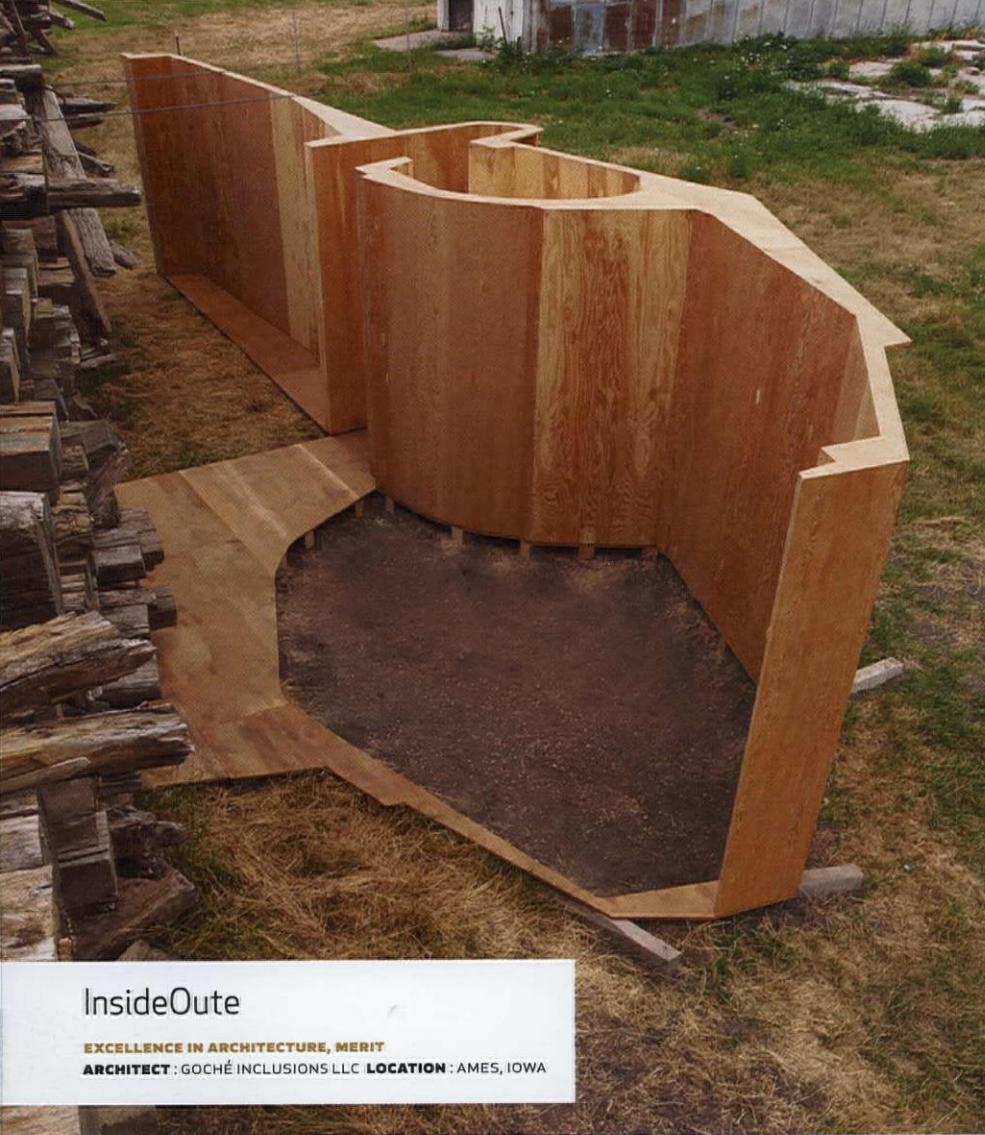


Foster Road Retreat

EXCELLENCE IN ARCHITECTURE, MERIT

ARCHITECT : NEUMANN MONSON ARCHITECTS

LOCATION : IOWA CITY, IOWA



InsideOute

EXCELLENCE IN ARCHITECTURE, MERIT

ARCHITECT: GOCHÉ INCLUSIONS LLC **LOCATION:** AMES, IOWA

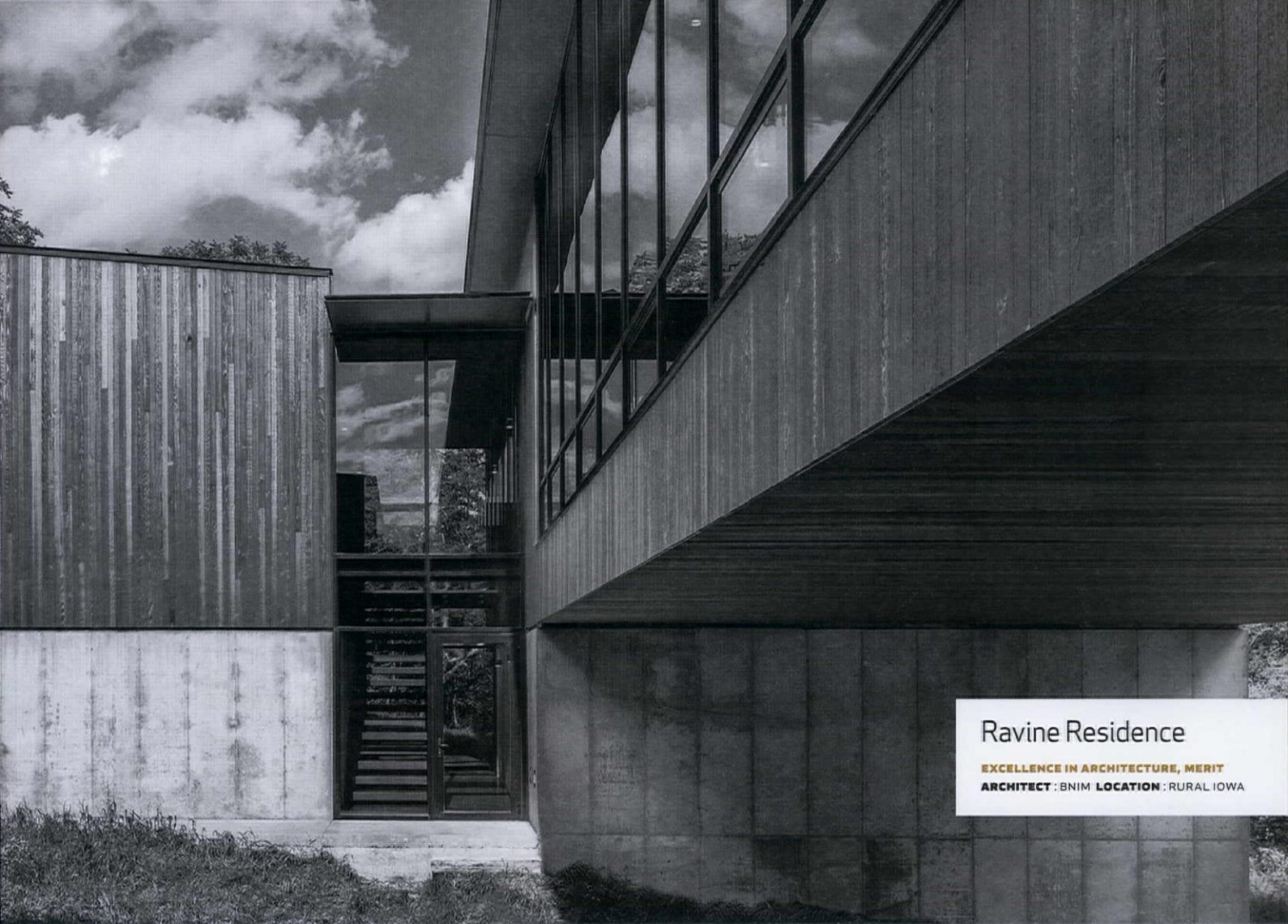


Pacific Campus Parking Structure

EXCELLENCE IN ARCHITECTURE, MERIT

ARCHITECT: HDR **LOCATION:** OMAHA, NEBRASKA



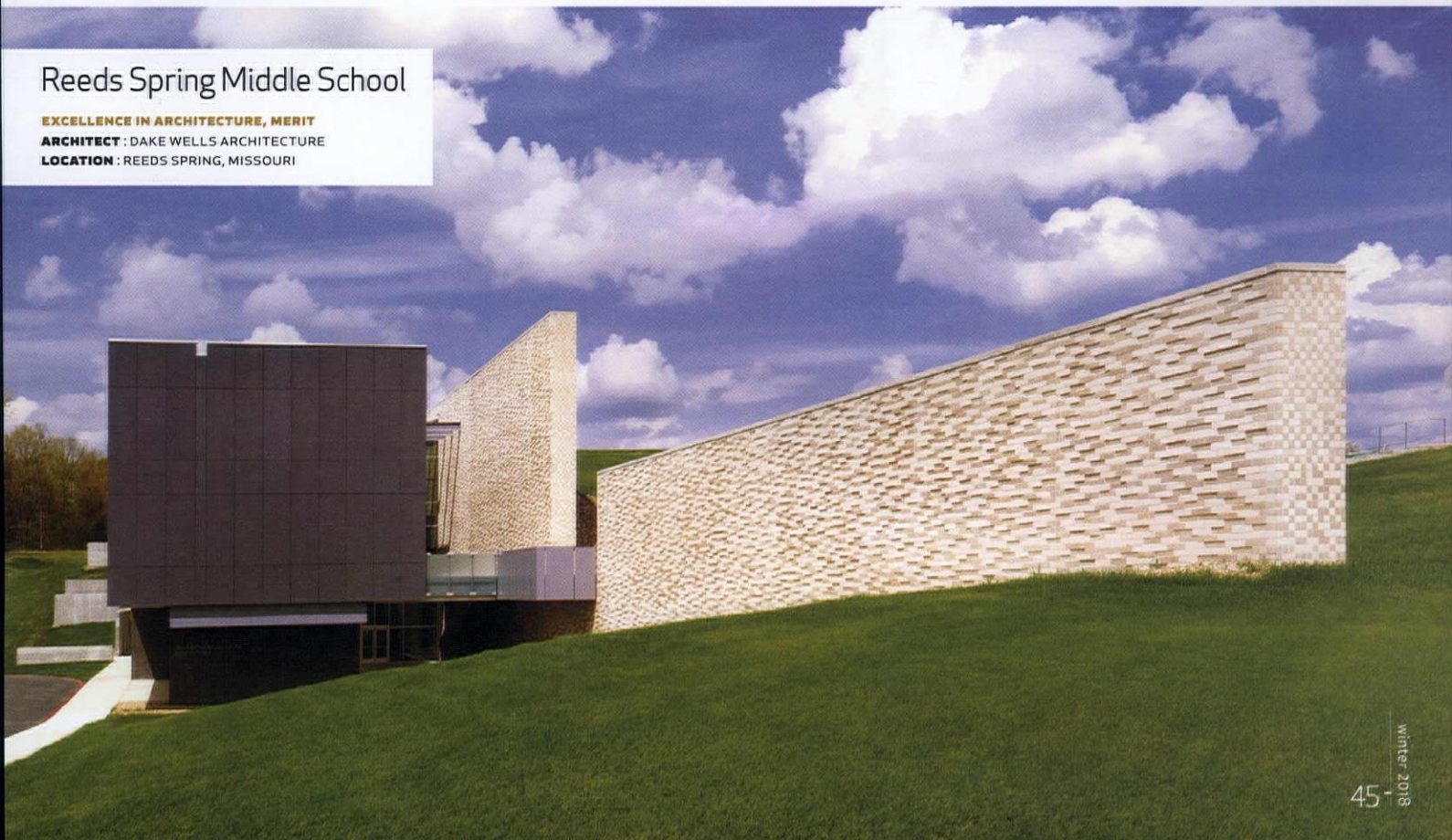


Ravine Residence

EXCELLENCE IN ARCHITECTURE, MERIT
ARCHITECT : BNIM **LOCATION :** RURAL IOWA

Reeds Spring Middle School

EXCELLENCE IN ARCHITECTURE, MERIT
ARCHITECT : DAKE WELLS ARCHITECTURE
LOCATION : REEDS SPRING, MISSOURI





St. Luke the Evangelist Catholic Church

EXCELLENCE IN ARCHITECTURE, MERIT

ARCHITECT : NEUMANN MONSON ARCHITECTS LOCATION : IOWA CITY, IOWA

Fassler Hall Dust Bowl

EXCELLENCE IN ARCHITECTURE, MERIT

ARCHITECT: FITZSIMMONS ARCHITECTS

LOCATION: OKLAHOMA CITY, OKLAHOMA

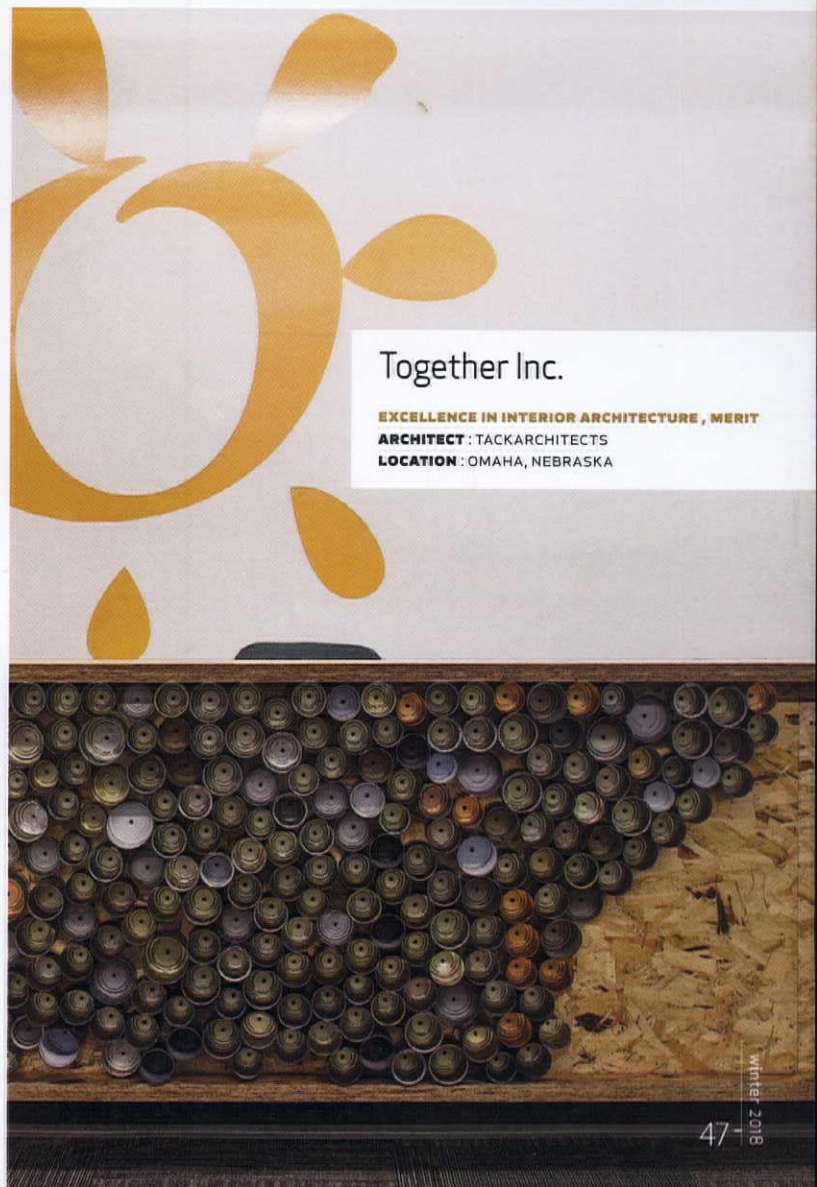


8th Street Market

EXCELLENCE IN ARCHITECTURE, MERIT

ARCHITECT: HUFFT

LOCATION: BENTONVILLE, ARKANSAS



Together Inc.

EXCELLENCE IN INTERIOR ARCHITECTURE, MERIT

ARCHITECT: TACKARCHITECTS

LOCATION: OMAHA, NEBRASKA

The Union for Contemporary Arts

EXCELLENCE IN INTERIOR ARCHITECTURE, HONOR

ARCHITECT : ALLEY POYNER MACCHIETTO ARCHITECTURE

LOCATION : OMAHA, NEBRASKA



Ervin & Smith

EXCELLENCE IN INTERIOR ARCHITECTURE, HONOR

ARCHITECT : RDG PLANNING & DESIGN

LOCATION : OMAHA, NEBRASKA



Barrios Mexican Restaurant

EXCELLENCE IN INTERIOR ARCHITECTURE, MERIT

ARCHITECT : GARDNER ARCHITECTS **LOCATION :** OKLAHOMA CITY, OKLAHOMA



Flywheel 1 & 2

EXCELLENCE IN INTERIOR ARCHITECTURE, MERIT

ARCHITECT : TACKARCHITECTS

LOCATION : OMAHA, NEBRASKA

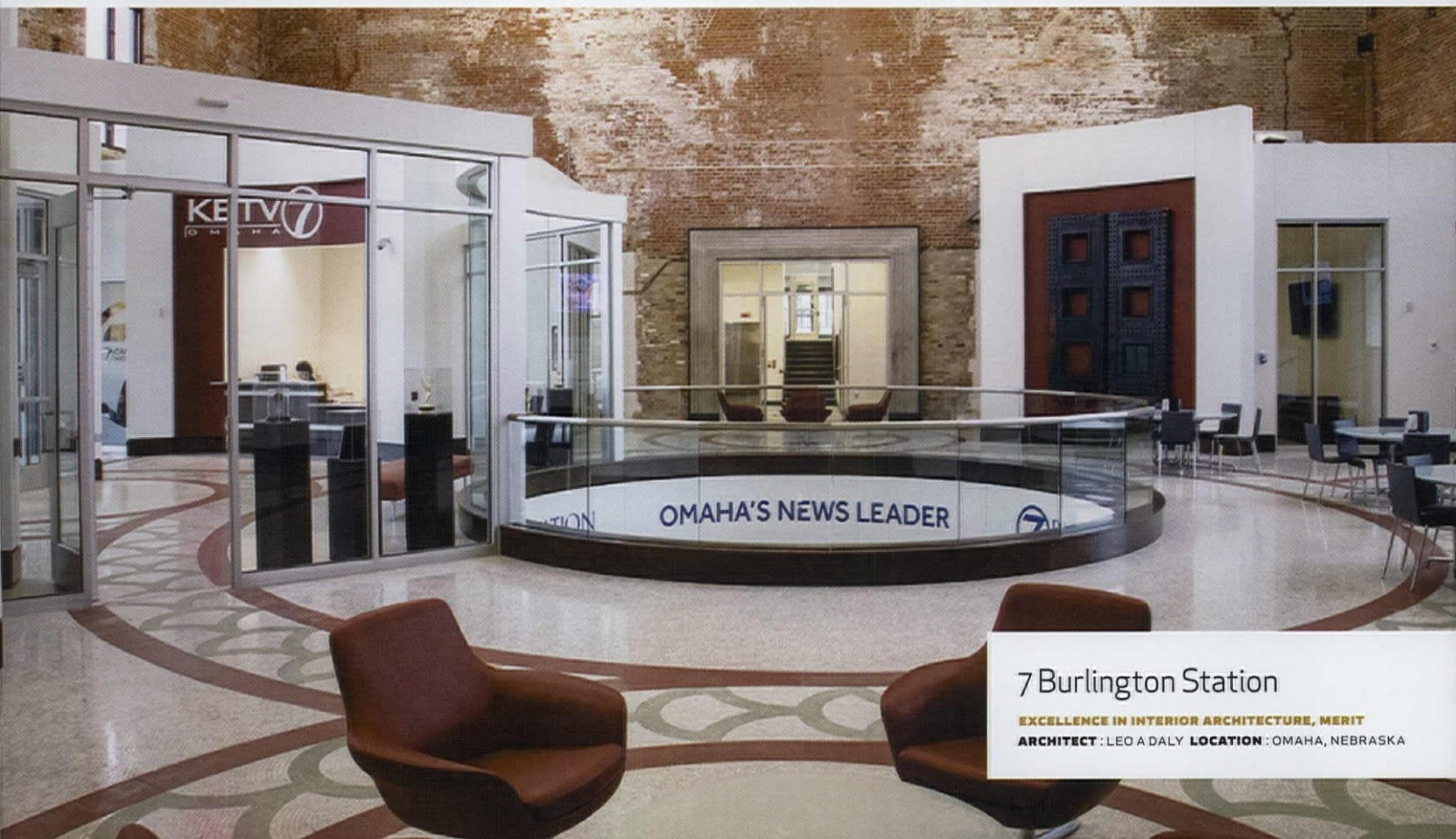


Design Studio & Workshop

EXCELLENCE IN INTERIOR ARCHITECTURE, MERIT

ARCHITECT : STUDIO MELEE

LOCATION : DES MOINES, IOWA



7 Burlington Station

EXCELLENCE IN INTERIOR ARCHITECTURE, MERIT

ARCHITECT : LEO A DALY **LOCATION** : OMAHA, NEBRASKA

Water Hutch

EXCELLENCE IN ARCHITECTURE DETAIL, MERIT

ARCHITECT: GOCHÉ INCLUSIONS LLC

LOCATION: DES MOINES, IOWA



Alate

EXCELLENCE IN ARCHITECTURE DETAIL, MERIT

ARCHITECT: STEVEN GINN ARCHITECTS

LOCATION: OMAHA, NEBRASKA

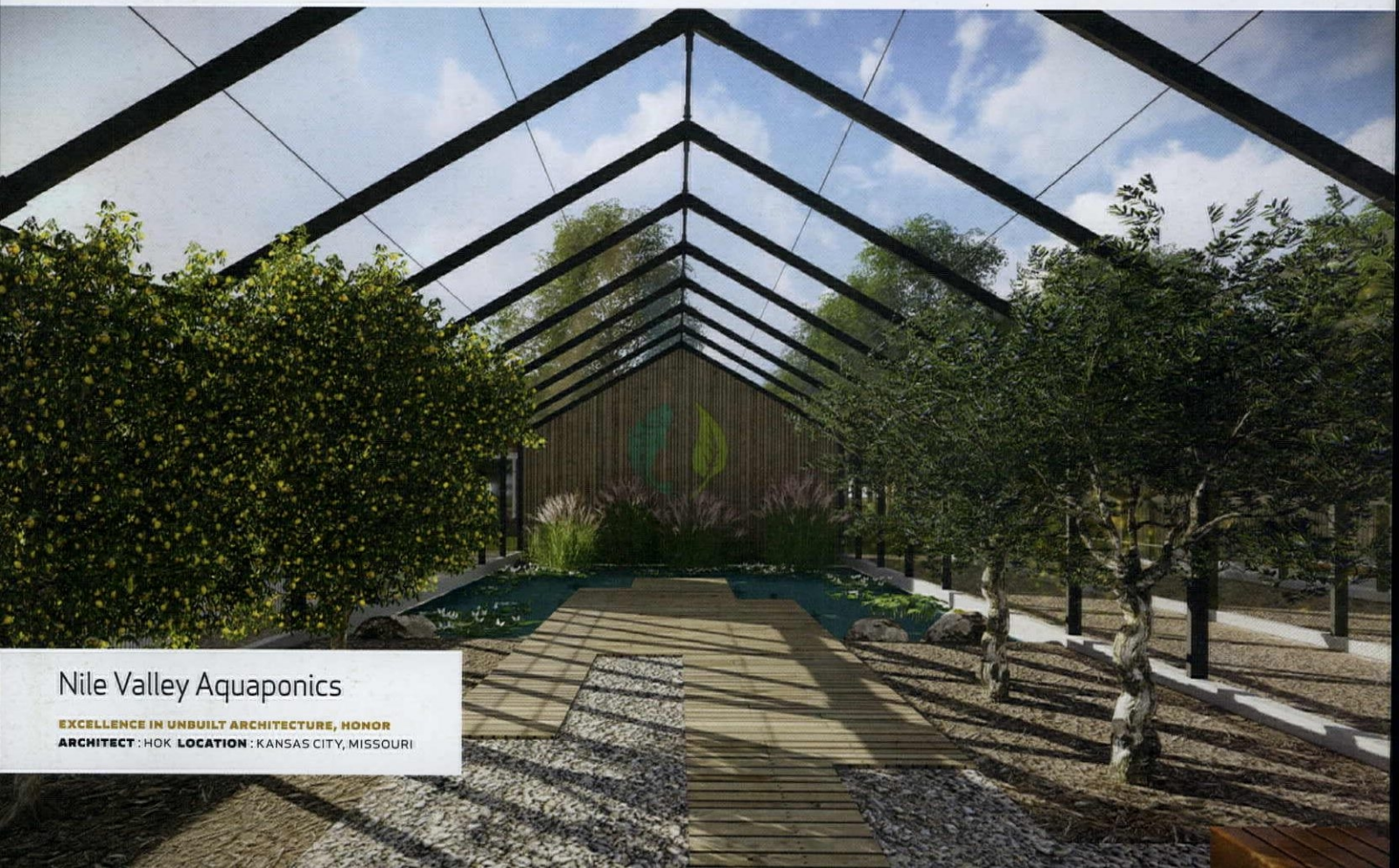


Cerner Innovations Campus

EXCELLENCE IN ARCHITECTURAL DETAIL, MERIT

ARCHITECT: GOULD EVANS

LOCATION: KANSAS CITY, MISSOURI



Nile Valley Aquaponics

EXCELLENCE IN UNBUILT ARCHITECTURE, HONOR

ARCHITECT: HOK **LOCATION:** KANSAS CITY, MISSOURI



Modular Hospital

EXCELLENCE IN UNBUILT DESIGN, MERIT

ARCHITECT: DEWBERRY ARCHITECTS INC.

LOCATION: WESTERN AFRICA



Better Place Forests

EXCELLENCE IN UNBUILT ARCHITECTURE, MERIT

ARCHITECT: MIN | DAY

LOCATION: POINT ARENA, CALIFORNIA

The power of design



At Home



At Work



In the Community

How could great design impact your everyday?

Join the conversation at

TopicA

Where the topic is
always architecture

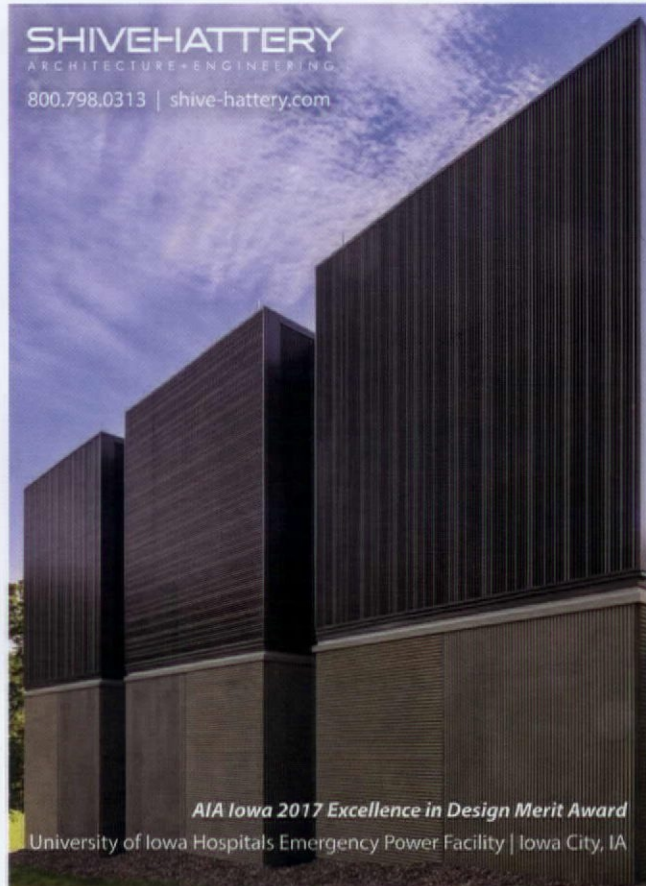
Images of AIA Iowa Design Award Winners. Learn more at IowaArchitecture.org

topicarchitecture.com



Tometich Engineering, Inc.
consulting structural engineers

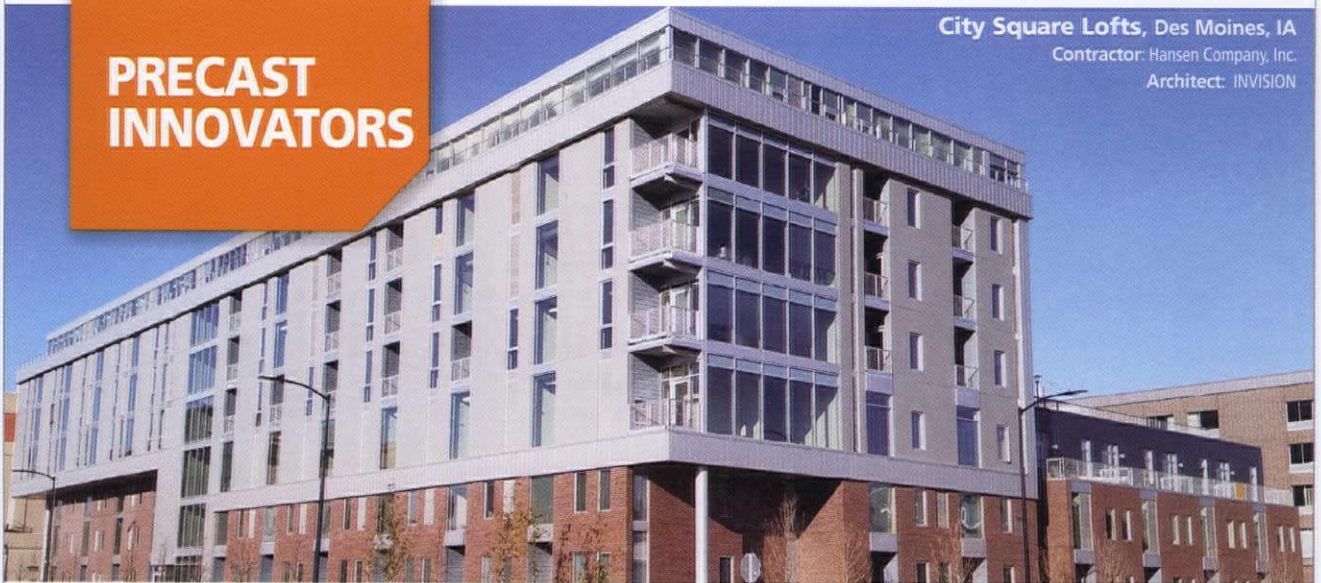
515.280.8022 • tometichengineering.com



AIA Iowa 2017 Excellence in Design Merit Award
University of Iowa Hospitals Emergency Power Facility | Iowa City, IA

PRECAST INNOVATORS

City Square Lofts, Des Moines, IA
Contractor: Hansen Company, Inc.
Architect: INVISION



Bringing Your Ideas to Life

Precast concrete brings ideas to life, efficiently, sustainably and affordably. With unlimited array of colors, textures and patterns available, precast concrete offers endless design possibilities.

For a seamless transition from vision to reality, partner with Wells Concrete. See what's possible at WellsConcrete.com



IOWA: 515.981.4624 | MINNESOTA: 800.658.7049 | NORTH DAKOTA: 800.732.4261

WELLSCONCRETE.COM



Photo: University of Iowa Stead Family Children's Hospital

PIGOTT

Places to inspire people.

When people are inspired by place, anything is possible. An environment powered by human-centered design can spark potential and drive prosperity.

Ready to elevate your space?
Let's work together.

Learn more at www.pigottnet.com



DIRTT
Build better.

project credits

AIA Iowa Design Award Winners

Cedar Rapids Public Library | 22

Location: Cedar Rapids, Iowa

Architect: OPN

Contractor: Ryan Companies (CM)/Knutson Construction

MEP Engineer: Design Engineers

Photographer: Main Street Studio

Engineer: M2B Structural Engineers

Cost Estimator: Stecker-Harmsen

Ravine Residence | 24

Location: Rural Iowa

Architect: BNIM

Structural Engineer: Saul Engineering

Photographer: Kelly Callewaert, BNIM

Pacific Center Campus Amenities Building | 26

Location: San Diego, California

Architect: BNIM

Contractor: DPR Construction

Engineer: Hope Amundson

Photographer: Assassi/Merrick/Hagopian

Engineer: MA Engineers

Engineer: Michael Wall Engineering

Engineer: Stuart Engineering

Landscape Architect: BNIM

Landscape Architect (local): landLAB

Structural Concrete: Morley Builders

Metal Skin/Guardrails: California Sheet Metal

Glazing/Sunshade: Vision Systems

American Enterprise Group Corporate HQ Restoration | 28

Location: Des Moines, Iowa

Architect: BNIM

Contractor: Ryan Companies US, Inc.

Engineer: Design Engineers

Photographer: Nick Merrick, Hedrich Blessing

Structural Engineer: Charles Saul Engineering

Civil Engineer: Snyder & Associates, Inc.

Code Consultant: FP+C Consultants, Inc.

Acoustical and A/V Consultant: The Sextant Group, Inc.

Owner Representative: Christensen Development

Historic Preservation Consultant: Christensen Development

Architectural Historian: Jennifer James Communication LC

Commissioning Consultant: SystemWorks LLC

MEP Contractor: Baker Group

Electrical Contractor: Baker Electric Inc.

Curtainwall Contractor: Architectural Wall Systems Co.

Fire Protection Contractor: Viking Automatic Sprinkler Co.

Furniture Vendor: Saxton Inc.

Interior Glazing Contractor: East Moline Glass / Elite Glass

Boehringer Ingelheim | 29

Location: Ames, Iowa

Architect: OPN

Contractor: Story Construction

Engineer: KJWW Engineering

Photographer: Wayne Johnson, Main Street Studios

Businessolver | 30

Location: West Des Moines, Iowa

Architect: Substance Architecture

Contractor: Hansen Company, Inc.

Photographer: Paul Crosby

Structural Engineering: Charles Saul Engineering

HNI Corporate Headquarters | 31

Location: Muscatine, Iowa

Architect: Neumann Monson

Contractor: Calacchi Construction Company, Inc.

Structural Engineer: Raker Rhodes

Photographer: Andrew Buchanan, Subtle Light Photography

Interior Design: IA Interior Architects

MEP Engineer: Hornbuckle Heating & Air Conditioning

Plumbing: Hometown Plumbing & Heating

Electrical: Tri City Electric

Civil Engineer: Martin & Whitacre

Mercy Women's Center | 32

Location: Clive, Iowa

Architect: INVISON

Contractor: Graham Construction

Photographer: Cameron Campbell, AIA

MEP Engineer: MODUS

Structural Engineer: Raker Rhodes

Civil Engineer: CEC

Foster Road Retreat | 33

Location: Iowa City, Iowa

Architect: Neumann Monson

Contractor: Smith & Wood Construction

Structural Engineer: M2B

Photographer: Cameron Campbell Integrated Studio

HVAC: E&J Geothermal

Electric: Advance Electric

University of Iowa Hospitals Emergency Power Facility | 34

Location: Iowa City, Iowa

Architect: Shive-Hattery

Contractor: Knutson Construction

Engineer: Affiliated Engineers Inc

Photographer: Mike Fager, Fisheye

Urban Eyecare & Eyewear | 35

Location: West Des Moines, Iowa

Architect: Substance Architecture

Contractor: Holcomb Corporation

Photographer: Paul Crosby

Custom Millwork: RCS Millwork

Graphic Design: Heather von Brown

YALI Regional Leadership Center | 36

Location: Nairobi, Kenya

Architect: DLR Group

Secondary Firm: MASS Design Group

Central State Region Design Award Winners

Blue Barn Theatre & Boxcar 10 | 41

Location: Omaha, Nebraska

Architect: MIN|DAY

Photographer: Paul Crosby

The Waldo Duplex | 41

Location: Kansas City, Missouri

Architect: el dorado, inc. in conjunction with Design+Make Studio

Photographer: Mike Sinclair

One Place at Riverfront Crossings | 42

Location: Iowa City, Iowa

Architect: Neumann Monson

Photographer: Cameron Campbell, AIA, Integrated Studio

Tulsa Ballet Hardesty Center for Dance Education | 42

Location: Broken Arrow, Oklahoma

Architect: Selser Schaefer Architects

Photographer: Ralph Cole Photography

Estadio BBVA Bancomer | 43

Location: Monterrey, Mexico

Architect: Populous and VFO ARQUITECTOS

Photographer: Jorge Taboada

Foster Road Retreat | 43

Location: Iowa City, Iowa

Architect: Neumann Monson Architects

Photographer: Cameron Campbell, AIA, Integrated Studio

InsideOute | 44

Location: Ames, Iowa

Architect: Goché inclusions llc

Photographer: Cameron Campbell, AIA, Integrated Studio

Pacific Campus Parking Structure | 44

Location: Omaha, Nebraska

Architect: HDR

Photographer: Dan Schwalm

Ravine Residence | 45

Location: Rural Iowa

Architect: BNIM

Photographer: Kelly Callewaert

Reeds Spring Middle School | 45

Location: Reeds Spring, Missouri

Architect: Dake Wells Architecture

Photographer: Gayle Babcock

St. Luke the Evangelist Catholic Church | 46

Location: Iowa City, Iowa

Architect: Neumann Monson

Photographer: Cameron Campbell, AIA, Integrated Studio

Fassler Hall Dust Bowl | 47

Location: Oklahoma City, Oklahoma

Architect: Fitzsimmons Architects

Photographer: Joseph Mills

8th Street Market | 47

Location: Bentonville, Arkansas

Architect: Hufft

Photographer: Jake Farmer

Together Inc. | 47

Location: Omaha, Nebraska

Architect: TACKarchitects

Photographer: Tom Kessler

The Union for Contemporary Art | 48

Location: Omaha, Nebraska

Architect: Alley Poyner Macchietto Architecture

Photographer: Dana Damewood

Ervin & Smith | 48

Location: Omaha, Nebraska

Architect: RDG Planning & Design

Photographer: Tom Kessler

Barrios Mexican Restaurant | 49

Location: Oklahoma City, Oklahoma

Architect: Gardner Architects

Photographer: Tim Hursley

Flywheel 1 & 2 | 49

Location: Omaha, Nebraska

Architect: TACKarchitects

Photographer: Tom Kessler

Design Studio & Workshop | 50

Location: Des Moines, Iowa

Architect: Studio MELEE

Photographer: Taylor J. Danger, Associate AIA

7 Burlington Station | 50

Location: Omaha, Nebraska

Architect: Leo ADaly

Photographer: Visko Hatfield

Water Hutch | 51

Location: Des Moines, Iowa

Architect: Goché inclusions llc

Photographer: Cameron Campbell, AIA, Integrated Studio

Alate | 51

Location: Omaha, Nebraska

Architect: Steven Ginn Architects

Photographer: Tom Kessler

Cerner Innovations Campus | 52

Location: Kansas City, Missouri

Architect: Gould Evans

Photographer: Tim Griffith

Nile Valley Aquaponics | 52

Location: Kansas City, Missouri

Architect: HOK

Modular Hospital (MOHO) | 53

Location: Western Africa

Architect: Dewberry Architects Inc.

Better Place Forests | 53

Location: Point Arena, California

Architect: MIN|DAY



Visit our beautiful showroom to bring your residential and commercial lighting projects to life.

Spectrum
LIGHTING & INTERIORS

2540 104TH ST. • URBANDALE, IA • (515) 276-5088 • WWW.SPECTRUMLIGHTING.BIZ



Project:
Leapfrog Technologies
Contractor:
Build to Suit Incorporated
Architect:
ASK STUDIO
Photo:
Steve Sullivan (Sullivan Photography)



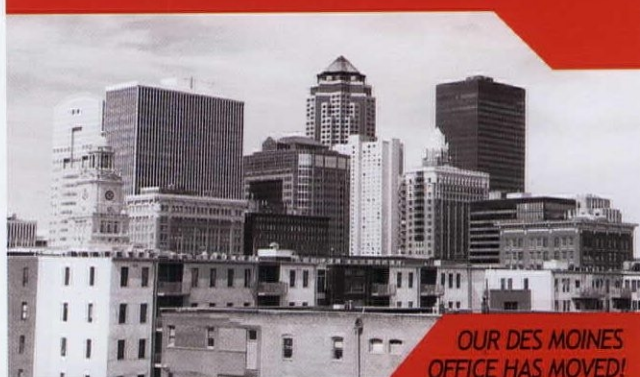
*Proudly serving the
Midwest's precast needs.*

(319) 986-2226 (Mount Pleasant)
(319) 217-8147 (Des Moines)
sales@mpcent.com / mpcent.com

+ Follow MPC
on LinkedIn



SAUL
ENGINEERING



**OUR DES MOINES
OFFICE HAS MOVED!**

The Equitable Building
604 Locust Street
Suite 202
Downtown Des Moines

www.saul.engineering/newoffice



Cedar Rapids | Des Moines
Iowa City | Madison
opnarchitects.com



AIA
Iowa

What it takes to be an Architect may surprise you:

550 Licensed AIA Iowa Architects
5-7+ years of post-secondary schooling
1,860 minimum internship hours
6 required intensive skills tests
12 hrs/year of continuing education

>50 hours/week of work
expert in: building codes,
environmental sustainability,
design, technology,
historic renovation, & more

Focuses on:
client needs, quality,
health, safety, welfare,
occupant use,
resource management, & more

an architect works with a team, builds relationships, invests in design...and really does love Legos



learn more at AIAIowa.org



PRSRT STD
U.S. POSTAGE
PAID
DES MOINES, IA
PERMIT NO. 589

***** AUTO**5-DIGIT 51101

0000711 S3 P2
EDWARD STORM
SHYFT COLLECTIVE
1201 4TH ST STE 201
SIOUX CITY IA 51101-2139



2018 RANGE ROVER VELAR

TAKE CENTER STAGE WITH EVERY TURN



ABOVE & BEYOND



There are some things that you can't help but be drawn towards, even if your instincts tell you otherwise. The New Range Rover Velar with its bold stance and slender full LED headlights may appear rather intimidating. But inside, it's a welcoming sanctuary you can't help but enter. A truly compelling design, inside and out, that can't help but captivate you. And of course, it's a Land Rover vehicle with unrivaled capability.

Land Rover Des Moines

9800 Hickman Road
Des Moines, IA 50325
888.355.8865

www.landroverdesmoines.com

complimentary pick-up & delivery anywhere in the state!