

Iowa Architect

S U M M E R 1 9 8 5 \$2.00



A R C H I T E C T U R E

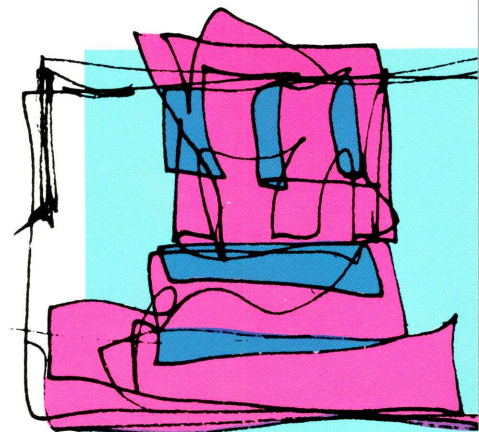
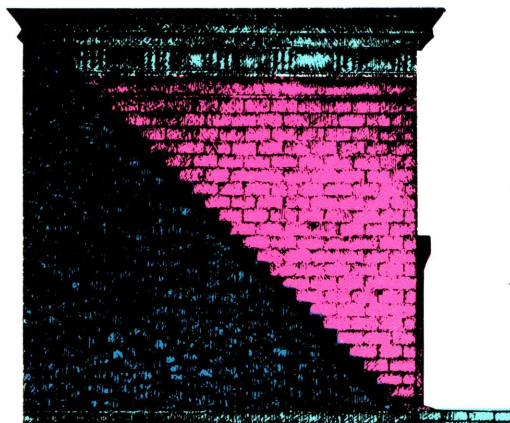
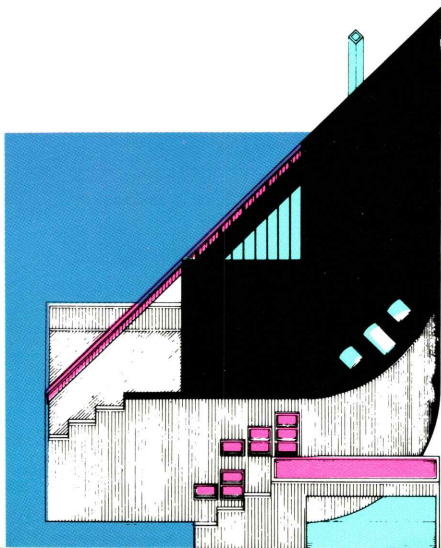
1985

**American Institute of Architects
Central States Region Convention
October 10 and 11, Des Moines, Iowa**

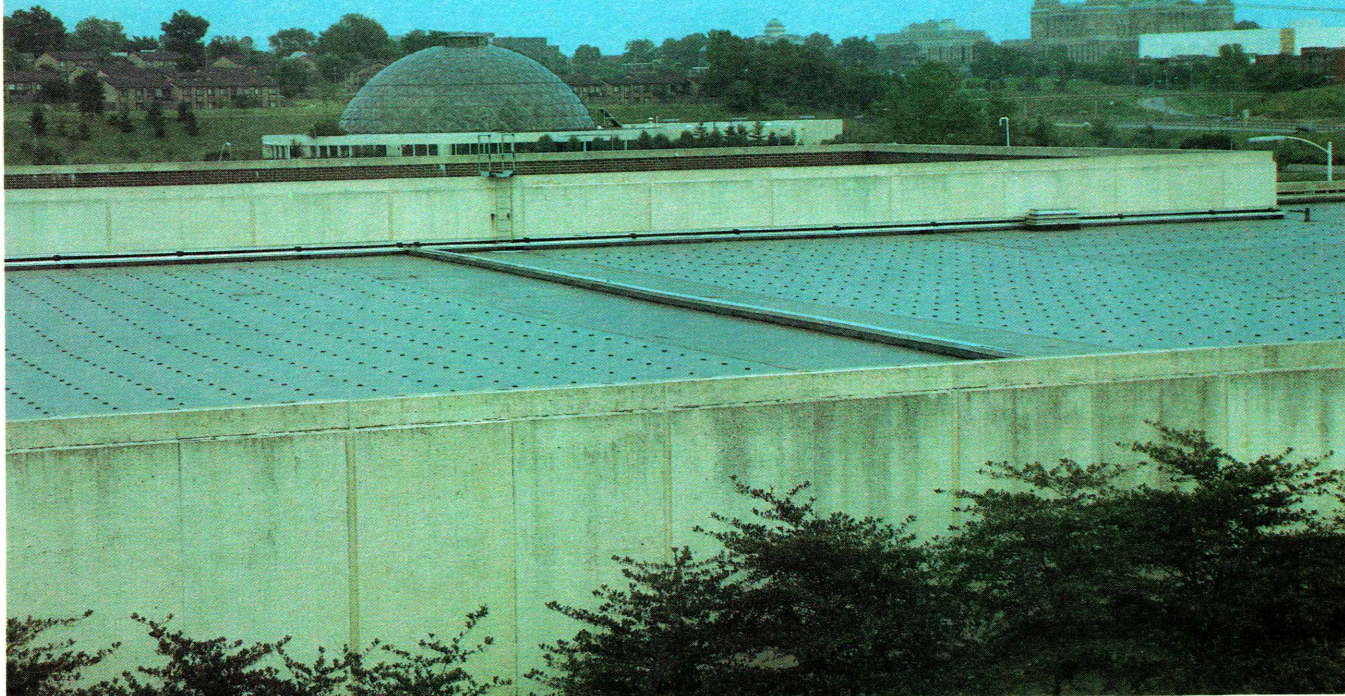
The Iowa Architect
will be the principal news medium
at the convention, with schedules
of events, information about the
city and an architectural tour guide.

For advertising contact:

Tom Holtz
(515) 280-3068



The Snap-on Roof is here!



United States Post Office, Maintenance Building, Des Moines, Iowa
Roofing Contractor: Wood Roofing and Sheet Metal, Des Moines, Iowa

Carlisle introduces America's first mechanically attached single-ply roof that doesn't penetrate the membrane.

It's here...M.A.R.S. Design NP™ (Mechanically Attached Roofing System—Non-Penetrating). This is the ultimate single-ply roof system, combining the lightweight advantage of adhered systems with the low cost holding power of ballasted systems. But with a plus! It also offers the economical advantage of mechanically attached systems *without penetrating the membrane!*

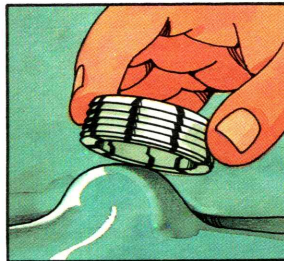
Used in Europe for nearly a decade, this innovative system will save you time, money, materials and weight.

Fast, easy installation.

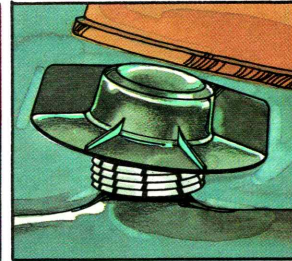
Carlisle's performance-proven Sure-Seal™ membrane is held in place by simple three-part assemblies. These are a snap to install...as easy as one, two, three. No special equipment. Even in marginal weather. A small crew of Carlisle approved applicators can install an entire roof in record time.



1 Roll membrane over knobbed base plate.



2 Roll and snap on white retainer clip.



3 Snap and screw on threaded black cap.

Flexible design.

Goes right over failing built-up roofs and those that can't support much weight. The system fastens to most substrates and can even be moved to another location.

Best of all, it's from Carlisle.

Trust Carlisle to bring you the best and most innovative roofing systems. We

promise single-source responsibility, trained professional applicators and over 20 years experience. Best of all, we offer a watertight warranty of up to 15 years.

For more information on our snap-on roof, call toll-free, (800) 233-0551, in PA (800) 932-4626. Call today, this is one snap decision your roof...and budget...will never regret!

Sure-Seal, M.A.R.S. Design NP and Carlisle are trademarks of Carlisle Corporation.
M.A.R.S. Design NP Patent Pending. ©1983 Carlisle Corporation

STETSON BUILDING PRODUCTS

Des Moines, Iowa 510 SW 9th 515/243-6286
Rock Island, Illinois 619 11th Street 309/788-8412

The roof that's requested by name

CARLISLE

Carlisle SynTec Systems

Division of Carlisle Corporation, P.O. Box 7000, Carlisle, PA 17013



■ For more information please call collect. Our representatives will be glad to call on you with samples.

United Brick and Tile

515/244-3264

Sioux City Brick and Tile

712/258-6571

- Quality Face Brick
- Ironspot Earth Tones (Numerous colors and sizes)
- Structural Glazed Facing Tile
- Floor Brick
- Interlocking "I" Pavers
- Matching Brick Pavers and Ceramic Tile
- Glazed Brick
- Cleaners and Sealers
- Mortar Colors
- Clay Roofing Tile
- *Kozy Heat* Fireplaces

We are a Full Service Company

Contents

Iowa Architect

VOLUME 33 NUMBER 3

Editor

Kirk Von Blunck, AIA

Editorial Staff

Edward Soenke, AIA
Mark Schmidt, AIA
William Anderson, AIA
Patricia Zingsheim, AIA
Brian Lubben, AIA
Rod Kruse, AIA
Sidney Robinson, AIA

Publisher

Holtz/Wilson Design

Marketing Director

Tom Holtz

Graphic Design

Holtz/Wilson Design, Inc.

Iowa Chapter

American Institute of Architects

Executive Director

Kate Campbell

President

Thomas Waggoner, AIA, Mason City

President Elect/ 1st Vice President

Richard Pattschull, AIA, Iowa City

2nd Vice President

Robert Smith, AIA, Des Moines

Secretary

Steven Gray, AIA, West Des Moines

Treasurer

Douglas Sires, AIA, Des Moines

Directors

Judith McClure, AIA, Des Moines

Dale McKinney, AIA, Sioux City

John Carlson, AIA, Iowa City

Past President

Kenneth Carpenter, AIA, Ames

Des Moines Architects

Council President

Daryl Metzger, AIA, Des Moines

Cedar Rapids/Iowa City

Architects Council

President

Roger Hadley, AIA, Cedar Rapids

Eastern Iowa Section

President

Scott Bengfort, AIA, Davenport

Northwest Iowa

Architects Council

President

Edward Storm, AIA, Sioux City

Subscription Rates

\$12.00 for one year. \$2.00 for single issue.

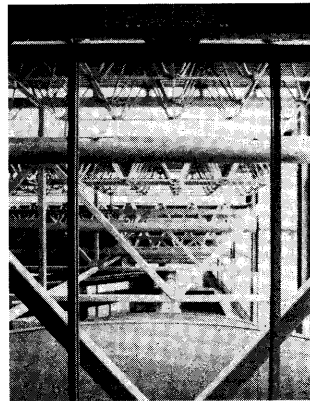
Note to subscribers: When changing address, please send address label from recent issue and your new address. Allow six weeks for change of address.

©1985, Holtz/Wilson Design, Inc. **Iowa Architect** is the official publication of the Iowa Chapter, American Institute of Architects. **Iowa Architect** is published bi-monthly by Holtz/Wilson Design, Inc., 733 19th Street, Des Moines, Iowa 50314, (515) 280-3068.

Editorial Offices

Iowa Architect, Iowa Chapter AIA, 512 Walnut Street, Des Moines, Iowa 50309, (515) 244-7502.

Reproduction of this material by any means without the permission of the publisher is prohibited.



On the Cover

Cedar Rapids Ground

Transportation Center,

Cedar Rapids, Iowa.

Architects

Cannon Design, Inc. Architects and Engineers

Olson Popa Novak, Architects, P.C.

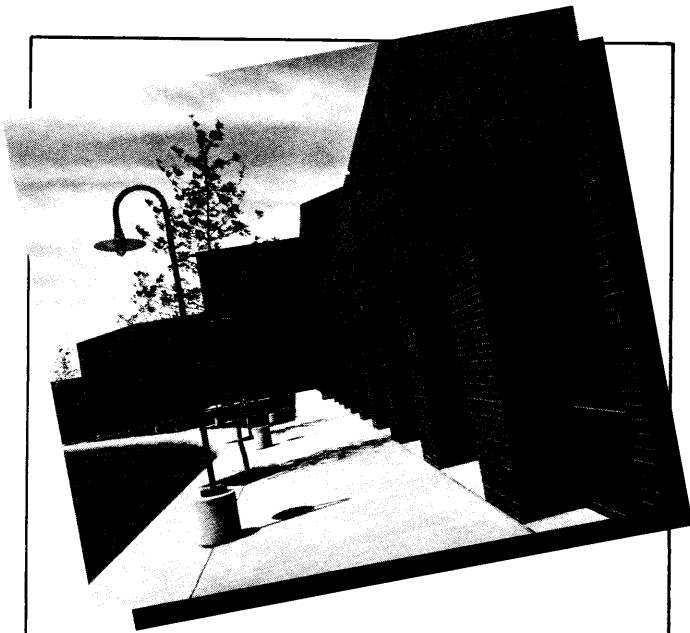
Brown Healy Bock, P.C. Associate Architects

Serving the Public

Japanese Friendship Garden	12
Cedar Rapids Ground Transportation Center	16
Sheboygan County Law Enforcement Center	20
Grundy Center Community Center	24
The Food's Out of This World . . . But the Place Lacks Atmosphere	26

Departments

Portfolio	6
Different By Design	9
Architects in Practice	10
Literature	31
New Products	32
The Arts	37
Journal	39
Advertising Directory	41



WHY THE PROS CHOSE ELECTRIC FOR CAPITOL CENTER III

The Pros: Architects — Shiffler Frey Baldwin; General Contractor — Ringland, Johnson, Crowley; Mechanical Engineer and Contractor — The Waldinger Corp.; Electrical Contractor — Brown Brothers Electric.

The Structure: 65,000 sq. ft. on three floors

Here's what they said...

The Architect: "In deciding on the HVAC system for this building, we were guided by the need for economy as well as to provide the maximum amount of leasable space. We looked at four different systems, both from a cost-of-installation standpoint and a ten-year life cycle analysis. This all-electric system proved to be the least expensive overall."

The Engineer: "The building type, shape, orientation, and intended use are extremely significant. This building is 'perimeter intensive' and requires an efficient, simple system with superior zoning flexibility. Variable air volume with electric heat proved to be the most attractive system in this case."

The Pros design for the future with electric.

For more information about costs and ideas for efficient HVAC systems, contact Bill Bloethe, Manager, Technical Services, Iowa Power, 515-281-2395.



Electric
Means Value Year After Year

The cost of this ad will be paid for by the customers of Iowa Power.

S I G N A G E



JSS

Johnson Specialty Sales

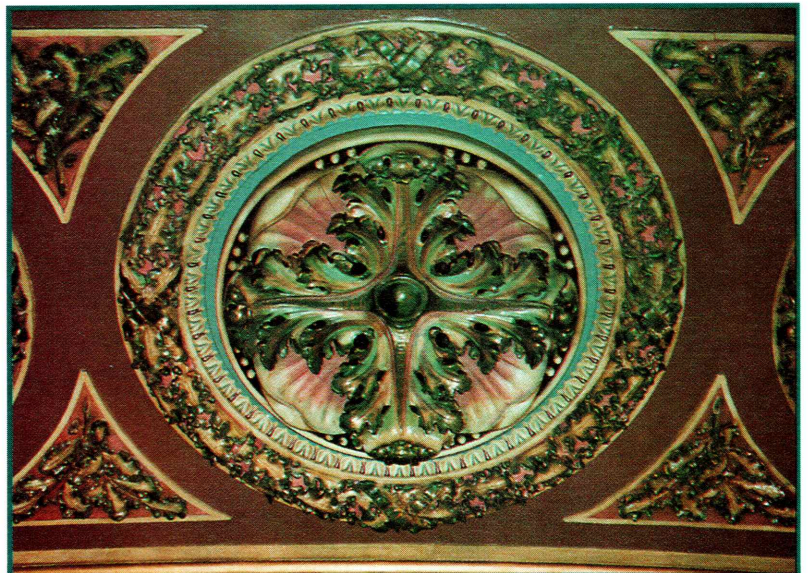
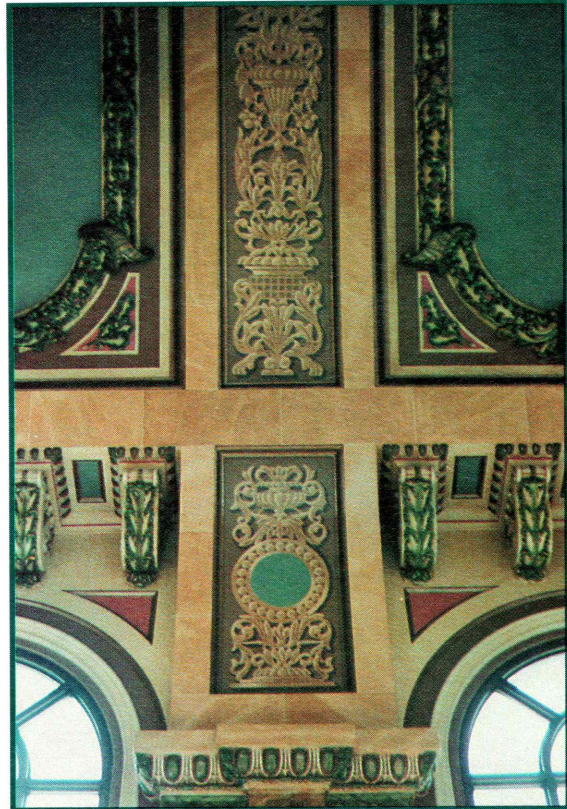
P.O. Box 2691
Des Moines, Iowa 50315
Telephone (515)285-2483
Iowa WATS 800-532-1284

ALLIED COMPANIES

Project
Des Moines City Hall
Des Moines, Iowa

Architect
Leo Carney

Restoration Contractor
Color, Inc.



COLOR INC

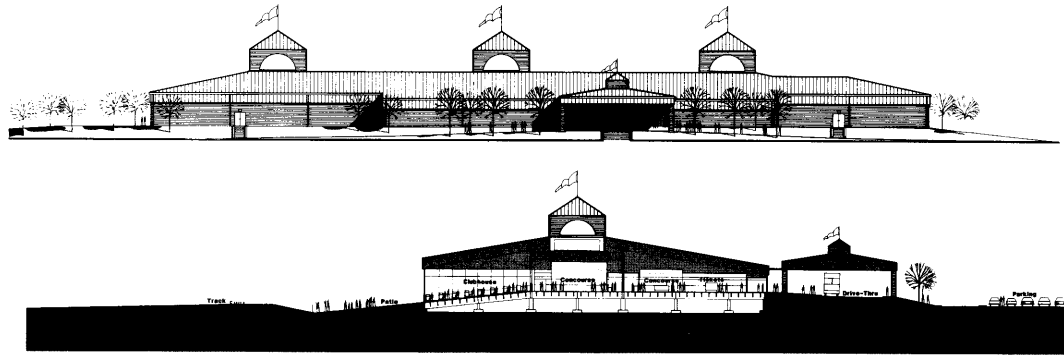
Painting/Contractors

Portfolio

Greyhound Racing Complex

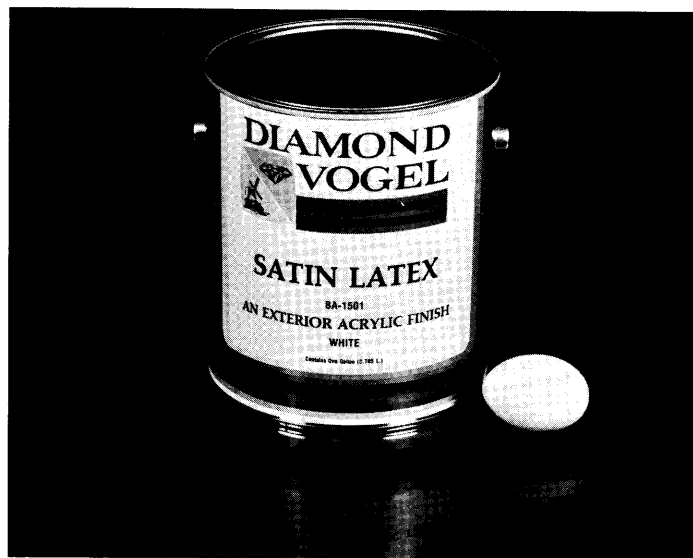
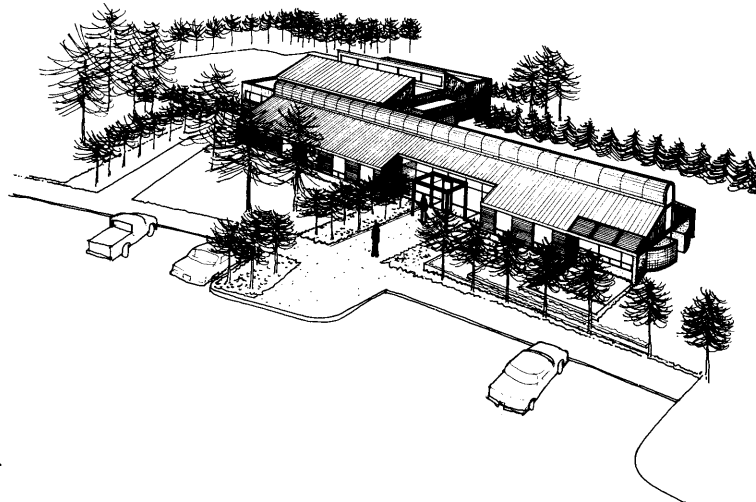
Greyhound racing – one of the nation's hottest spectator sports – took place against an unusual backdrop when Dubuque's \$10.1 million Greyhound Racing Complex opened this summer. The Dubuque facility is situated on recreational Chaplain Schmitt Memorial Island on the Mississippi River – accessible both from the new highway bridge that links Iowa and Wisconsin and from the river itself via a nearby harbor.

The Durrant Group Inc. provided architectural, structural engineering and construction management services for the \$9 million project under fast-track schedule: Final design started in mid-July of 1984 with the opening race set for June 1, 1985 – allowing just 10½ months for design and construction. Schive-Hattery Engineers provided site development, mechanical and electrical engineering services. Bird Fujimoto and Fish of San Diego was the architectural consultant, experienced in racetrack facilities.



Urbandale Water Department

Stouffer and Smith Architects has completed the design for the new operations center for the Urbandale Water Department. The 7,000 square foot facility houses both offices and maintenance spaces. The design concept employs a central circulation spine that links the office and maintenance spaces and results in a strong silhouette against the suburban landscape. The industrial character of the complex is emphasized with colored metal roofs, glass block, exposed structure, and metal panels. Completion is scheduled for April 1986.

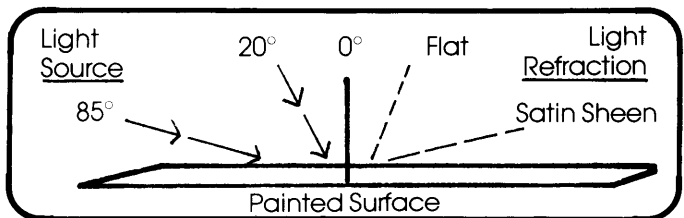


Diamond Vogel Paints

Iowa Sales Outlets

- Ames • Cedar Rapids • Clinton • Davenport • Des Moines
 - Fort Dodge • Marshalltown • Mason City
 - Newton • Sioux City • Spencer
- Iowa Manufacturers Locations
- Burlington • Marshalltown • Orange City

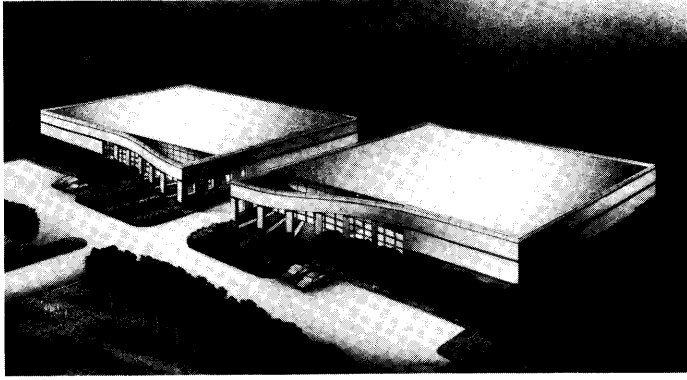
Acrylic Latex Sheen Finishes, like an eggshell, appear to be flat when seen head on, but take on a low luster when viewed from an angle.



Diamond Vogel Acrylic Exterior Satin Latex House paints provide surface luster without glare. The smooth surface, resulting from higher vehicle content, imparts a sparkle to the surface that lasts for years.



Contact your professional Diamond Vogel representative for further information.



**Meridian Business Campus
CMD Midwest, Inc.
Aurora, Illinois**

The firm of Hansen Lind Meyer is the winner of an invited competition for the master planning and design of several buildings for office and light industrial use. HLM's proposal located 10 new buildings, ranging from 32,400 square feet to 185,000 square feet on the existing business campus site and generated an overall design concept which emphasizes fronts and features individualized images.

**New Mexico State
Fair Ground Revitalization**

The Durrant Group, Inc. has assisted Mimbres, Inc. in the preparation of a master plan for the revitalization of the New Mexico State Fair Ground, located on a 226-acre site in Albuquerque, New Mexico.

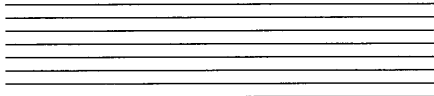
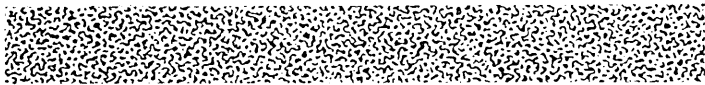
Central to the improvements recommended by the planning team is the creation of 12 districts which would function to bring the large site to a scale which fairgoers can more fully enjoy and also serve as the organizational core for both on and off season activities.



Private Residence

This shingle style residence, designed by Shiffler, Frey, Baldwin will be built in Des Moines in the midst of an established residential area. The 2½ story house, built on a field stone base, features

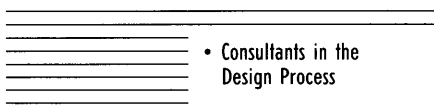
fan-shaped leaded windows, white columns and trim, trellised stone patios, stone fireplaces, a wood shingle roof, brick floors, coffered ceilings and a grand staircase.



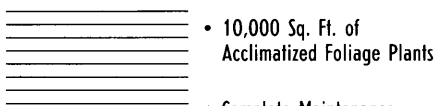
Certified Interior
Horticulturalist
On Staff



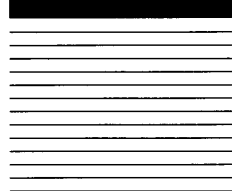
Member
Interior Plantscape
Association



- Consultants in the Design Process
- 10,000 Sq. Ft. of Acclimatized Foliage Plants
- Complete Maintenance Service
- Qualified Horticultural Technicians

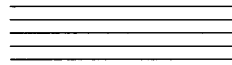


**HAWKINS
INTERIOR
PLANTINGS**

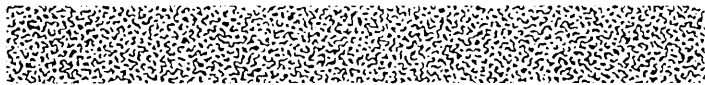


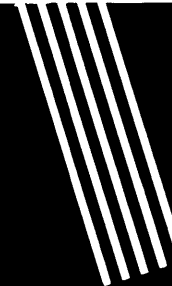
**THE
PROFESSIONAL
DIFFERENCE**

Dick Volkamer C.I.H./A.A.F.
Phone (515) 288-4831
4270 North Sixth Avenue
Des Moines, Iowa 50313



**HAWKINS
GREENHOUSE**





SERVICE
PHOTOPRINT

Engineers and Architects Supplies

Xerox
Reprographic Services
Camera-Modification
Commercial Art Supplies

924 Grand Avenue
Des Moines, Iowa 50309
515-288-1927



P R A I R I E
■
V I S I O N S

September 12, 13, 14

International Market Square's contract market and design conference, celebrating regionalism in interior design and architecture.

An exploration of midwestern creativity in its many forms and variations.

A wellspring of ideas.

Bring your own vision.
To participate, call or write:

International Market Square
275 Market Street
Minneapolis, MN 55405

612/338-6250

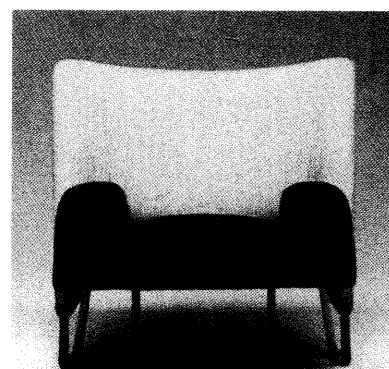
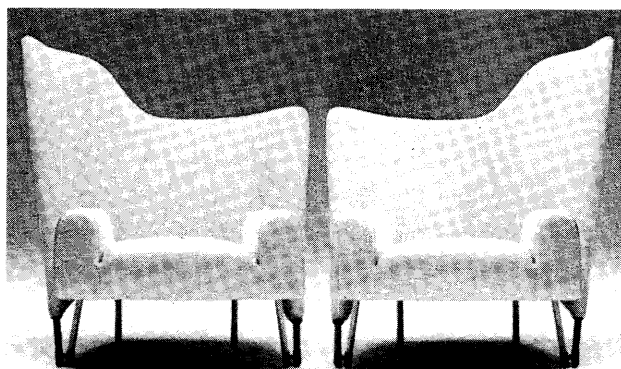
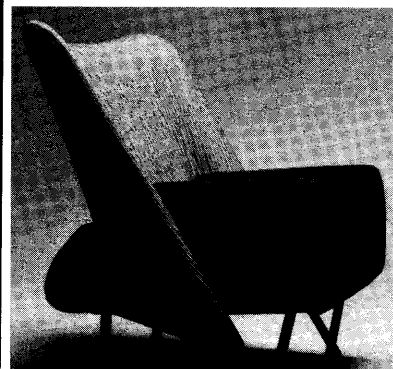


Paolo Deganello's Seating Collection

Atelier International continues to expand its collection of original designs created by an international group of architects and designers. Among these, Paolo Deganello's 1982 design of the Torso seating collection represents its most bold effort to bring to the American market the most significant, if sometimes unconventional, contributions to modern furnishings design.

Composed of horizontal and vertical elements which allow the creation of both symmetrical and asymmetrical seating units, the Deganello collection includes armchairs, sofa and a chaise lounge. Each unit is constructed of lacquered, tubular steel frames and utilizes AI's fine fabrics and leathers.

While the references to furniture designs of the 50's are immediately clear, the playful juxtaposition of crossing leg supports and fluid sweep of the backrest unmistakably connect the Torso pieces to current new wave design influences emanating from Milan.



Asbestos in Buildings

Finding Rational Solutions to a Complex Problem

The Iowa Chapter of the American Institute of Architects has formed a Task Force, headed by Mr. Howard Heil, AIA, to further investigate and evaluate the issue of asbestos in buildings and to develop for Iowa architects a coherent method of assessing asbestos related problems. The Task Force report, which will include a review of the five states with asbestos removal licensing laws now in effect, is expected by September 1, 1985.

Widespread media and public attention in recent months has been focused on the presence of asbestos in buildings. The result in some communities has been a near-panic over potential health risks to building occupants posed by asbestos-containing materials and a growing public fear that any asbestos in schools or other buildings represents an immediate threat to human safety.

It is ironic that asbestos, once specified by municipal building codes, architects and engineers to protect and save lives from fire should become the source of anxiety and agonizing debates over its presence in our nation's buildings and schools.

In fact, scientific studies indicate that the mere presence of an asbestos-containing material does not, of itself, pose any hazard to building occupants. The real issue is identifying under what conditions those materials pose a significant health risk, and determining how that risk should be minimized or eliminated.

The result is an important public health consideration, because hasty and unnecessary removal actions can actually create hazards where none previously existed. Numerous studies confirm that these actions can cause relatively high exposures to workers, and can actually leave a residual asbestos concentration in the building that is higher than the level before removal.

The key challenges facing those responsible for dealing with the asbestos issue, therefore, are understanding the facts and making scientifically-sound decisions.

The presence of asbestos in schools and other public buildings is a national issue; environmental statutes concerning such issues have historically been developed at the federal level. It is apparent, however, that in the absence of responsible action by EPA, it may become necessary to develop a system of separate, but uniform state standards.

In fact, a few states, including New Jersey and Maryland, have begun to address the issue

at the state level. New Jersey has adopted a standard for asbestos risk assessment, and Maryland has implemented certification requirements for asbestos abatement contractors.

The Presence of Asbestos

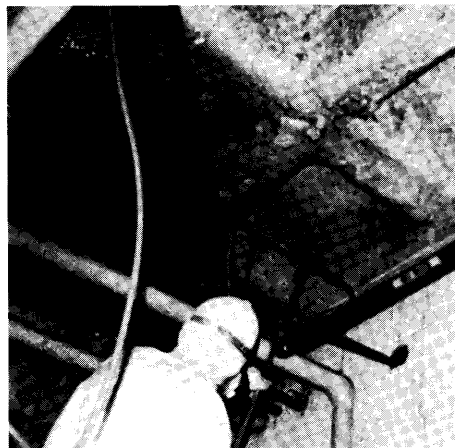
In the absence of uniform federal and state safety standards, school administrators and building owners are forced to make decisions based on fear, not fact.

Given its widespread natural occurrence in air and water, asbestos exposure is unavoidable. Normal, healthy lung tissues of persons never exposed in the workplace often contain millions of asbestos fibers. The National Academy of Sciences, the International Agency for Research on Cancer, and the Commission of European Communities have concluded that such low level exposures do not pose significant risks to health.

Numerous scientific studies on asbestos in schools and other public buildings have been conducted in the United States and abroad. They indicate that typical exposure levels of asbestos in buildings are indistinguishable from outside air. Very little, if any, risk is presented to building occupants in almost all situations. This conclusion has been echoed by the Ontario Royal Commission on Matters of Health and Safety Arising from the Use of Asbestos, the United Kingdom Commission on Asbestos, and numerous individual experts in the field.

Dr. Robert Sawyer, a noted authority on asbestos exposure, has testified before the Environmental Protection Agency that there is a common misconception that the discovery of asbestos-bearing construction products automatically indicates serious contamination and exposures in school buildings.

The Ontario Royal Commission stated "[We] deem the risk which asbestos poses to building occupants to be insignificant and therefore find that asbestos in building air will almost never pose a hazard to building occupants." The



Abatement program
at
Temple University

Commission also found that only a fraction of the asbestos removal projects in Canadian schools were warranted by the risks posed by asbestos, and noted that the risk of cancer created by such exposures is insignificant when compared to other risks faced by the public.

A recent advisory document from the Centers for Disease Control noted that: "From a public health perspective, potential exposures to low levels of asbestos in non-industrial settings may be less important than exposures to cigarette smoke (in relation to one's ultimate risk for premature morbidity and mortality)."

The National Institute of Building Sciences (NIBS) Task Force on Asbestos in Schools and Public Buildings stated it "does not believe that the mere presence of asbestos-containing materials in a building constitutes a hazard requiring immediate abatement, but requires instead a systematic approach to assessing the situation."

The Problem of Hasty and Unnecessary Removals

Because of the emotion and confusion surrounding asbestos in recent months, certain communities throughout the country have rushed into asbestos programs that are often unnecessary, and actually dangerous to the health and safety of the building occupants. In fact, most observers agree that the most serious problem regarding asbestos in schools and other public buildings is the danger that precipitous and unnecessary removal actions will often create a significant problem where none previously existed.

As the NIBS Task Force noted: "It is clear that poor abatement practices may exacerbate existing conditions rather than solve the problem." Similarly, a recent study of asbestos removal projects in the State of New Jersey by the State Public Advocate stated that improper removal of asbestos can be far more hazardous than if the asbestos is not removed at all.

One of the chief problems with asbestos re-

moval is the lack of trained experts who can identify those situations where some sort of abatement program is necessary, and then carry it out safely and effectively. In fact, as Dr. Sawyer has explained, "unqualified contractors and untrained workers are more likely to aggravate the risk than correct it. In the present environment of anxiety and haste, unnecessary removals are poorly-controlled removals. In these cases, a situation of highly questionable and dubious risk is replaced by one that is certain."

The Lack of Uniform Standards

The mishandling of asbestos abatement projects throughout the country can be traced, in large measure, to the ongoing confusion and lack of uniform standards among federal, state and local agencies in identifying when an asbestos problem exists and what to do about it. The EPA concedes that its asbestos-in-schools rule does not directly require school districts to take corrective actions, yet maintains that its school program "is working."

State and local officials, however, need guidance on which asbestos conditions require abatement and which do not. Despite EPA's apparent reluctance to take action, support for uniform standards is widespread.

According to the Centers for Disease Control: "Standardized, reliable and valid methods of asbestos hazard evaluation are necessary, especially if there is to be periodic reevaluation of asbestos hazards and an overall assessment of the effectiveness of the EPA rule." The CDC expressed support of "any potential efforts on the part of the EPA to develop uniform methods for surveillance of school asbestos hazards and to develop uniform criteria for conducting remedial activities."

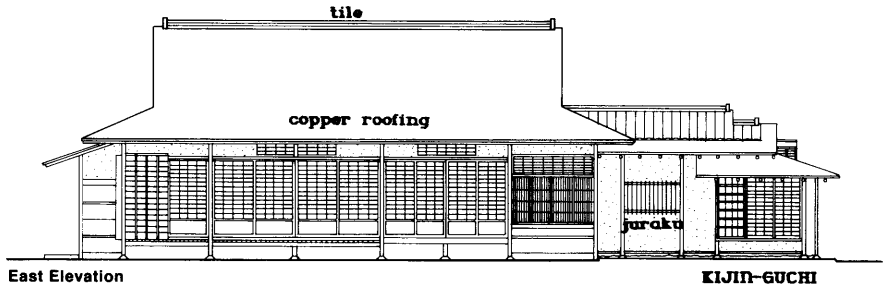
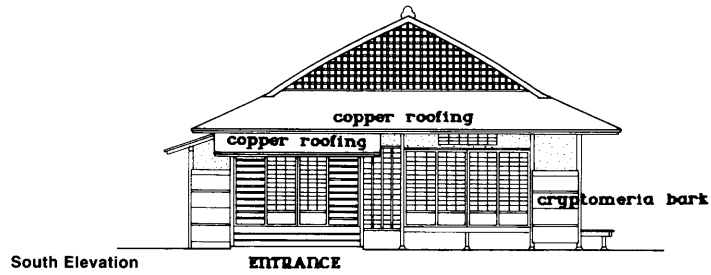
The Service Employee International Union (SEIU) has filed a suite against EPA to force the agency to quickly promulgate rules for determining when asbestos in schools is hazardous and requirements for corrective action. SEIU has stated that "since the abatement contractors have no legal standards to abide by, schools across the country have become more highly contaminated than if asbestos was never touched in the first place. The result has been that EPA has transformed a very bad situation into an environmental catastrophe." The NIBS Task Force concluded that "the establishment of standards is necessary as existing standards appear to be incomplete or inadequate." "The bottom line," it said, "is the need for a national process that will work at the local level."

The United States General Accounting Office said that "until EPA develops more specific criteria about when asbestos poses a serious threat requiring abatement actions, school officials may continue to overreact and spend money needlessly, or more importantly, underreact and expose school occupants to hazardous asbestos conditions . . . EPA's current program does not include any requirements that abatement actions be taken. Thus, the decision about whether or not the presence of asbestos-containing materials in an individual school presents a significant risk requiring abatement action will continue to be a highly subjective decision for local school boards."

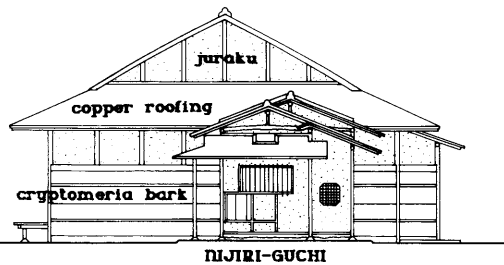
Without question, safety is the most important objective in addressing the presence of asbestos in schools and public buildings. The current system, however, is not working for anyone. While an interim system of individual state standards is preferable to having no standards at all, EPA still has a fundamental responsibility to provide guidance on this critical safety issue. The agency should move quickly to establish nationwide guidelines for assessing asbestos exposure risks and set standards for abatement if risks are identified. ■

Japanese Friendship Garden

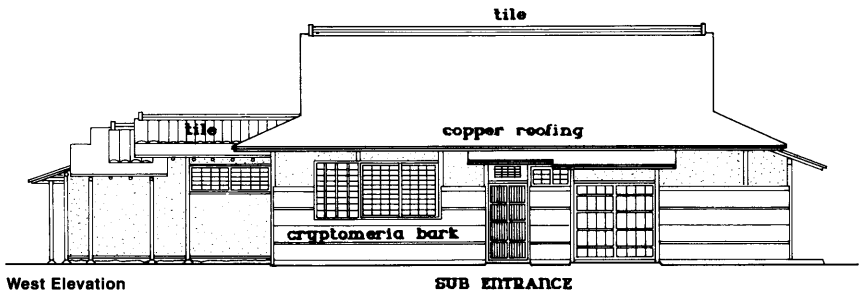
It is not possible to fully appreciate Japanese culture without understanding the art form of the tea ceremony. The ceremony is an appreciation of beauty shared among friends, stimulated by contemplation of architecture, landscape gardens, painting and, of course, tea. The Japanese Friendship Garden will comprise a unique and unparalleled cultural attraction for Iowa.



►
Upper Right
Japanese structure in Philadelphia constructed by the Rockefeller family and refurbished by the Japanese government as a gift for the American bicentennial. Its overall style and form is similar to that envisioned for the Des Moines Teahouse.

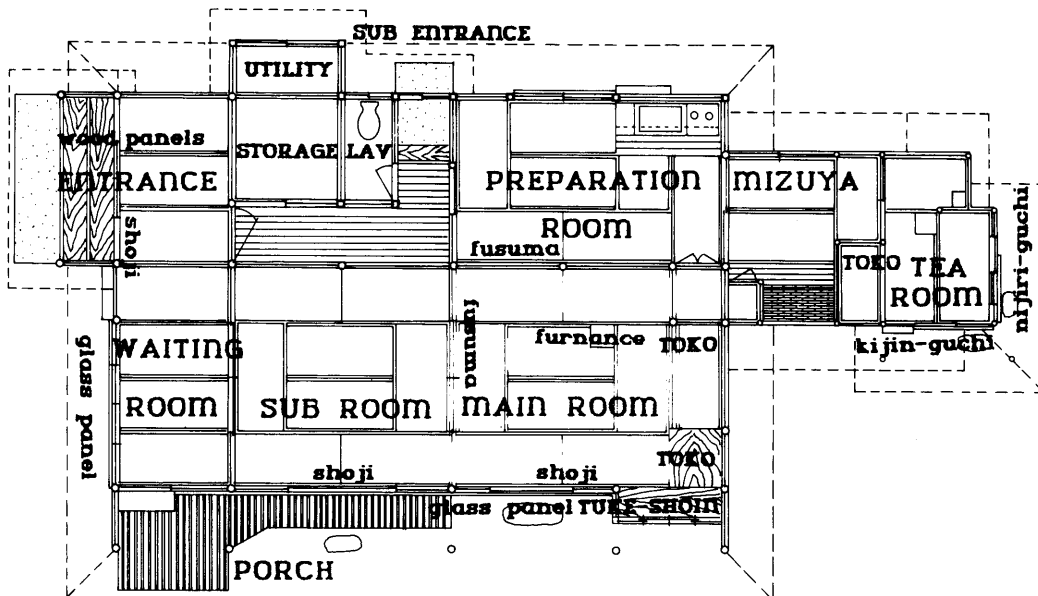


Lower Right
Shoin building interior – recently built – showing Tokonoma, display shelves and window. One sliding shoji panel is in view on the right.





Floor Plan
 Japanese Friendship Garden
 Teahouse
 Des Moines, Iowa



Recent advances in communication and transportation have helped to end the relative geographical isolation of the midwestern United States, and interest in foreign trade and travel is skyrocketing. As Des Moines and Iowa increasingly develop international economic ties, there has been a corresponding rise in the number of cultural and educational interchanges with other countries.

In keeping with this trend, a major international cultural attraction is under construction in Des Moines. The Japanese Friendship Garden is intended to provide a focal point for the active "sister state" and "sister city" relationships between the state of Iowa and Yamanashi Prefecture, and Des Moines and Kofu. The 10.3 acre site, which is a three minute drive from the Botanical Center, is located in Union Park above the Birdland Marina. Plans include a seventeenth century "strolling pond garden", an authentic traditional teahouse, and a pavilion for exhibits, performances, classes, business retreats, and receptions, plus administrative offices, a gift shop, and rest rooms. The enclosed park will feature two lakes, a waterfall, a stream, various kinds of wooden and stone bridges, a sand and stone meditation garden, several arbors, an azalea garden, a maple hill, a cherry blossom picnic area, lotus and iris wet gardens, large stone lanterns, and an impressive traditional entrance gate. Earth excavated from the lakes will be piled to form artificial hills and islands.

Annual seasonal festivals, cultural demonstrations, exhibits, and educational programs will be

scheduled. The Omote Senke School of Tea, and the National Saga Academy of Oriental Fine Arts, both owned by the royal family and located in Kyoto, Japan, have agreed to sponsor teachers. The Japanese Friendship Garden will be open year around on an admission fee basis. The project was initiated by the Des Moines Friendship and Sister City Commission, and is administered by the Des Moines Japanese Teahouse and Garden Association, Inc., a private non profit corporation.

Construction will take place in three phases. In the first phase, the teahouse complex and teagarden will be built. Phase two is the development of the entire garden, and phase three will be the construction of the pavillion.

The Japanese Friendship Garden is being financed by a public fund raising campaign. \$700,000 is the approximate cost of the first phase, and the total project will cost an estimated 2.5 million dollars.

The garden master plan was created by Dr. Koichi Kawana, an internationally recognized Japanese garden designer best known in this country for his garden at the Missouri Botanic Center in St. Louis. A famous Japanese teahouse architect, Junichi Hirai, is responsible for the design of the teahouse complex.

Mr. Hirai will cooperate with a team of Japanese craftsmen who have been apprenticed since youth learning ancient woodworking and plastering skills unique to Japan.

The teahouse will be constructed with an intri-

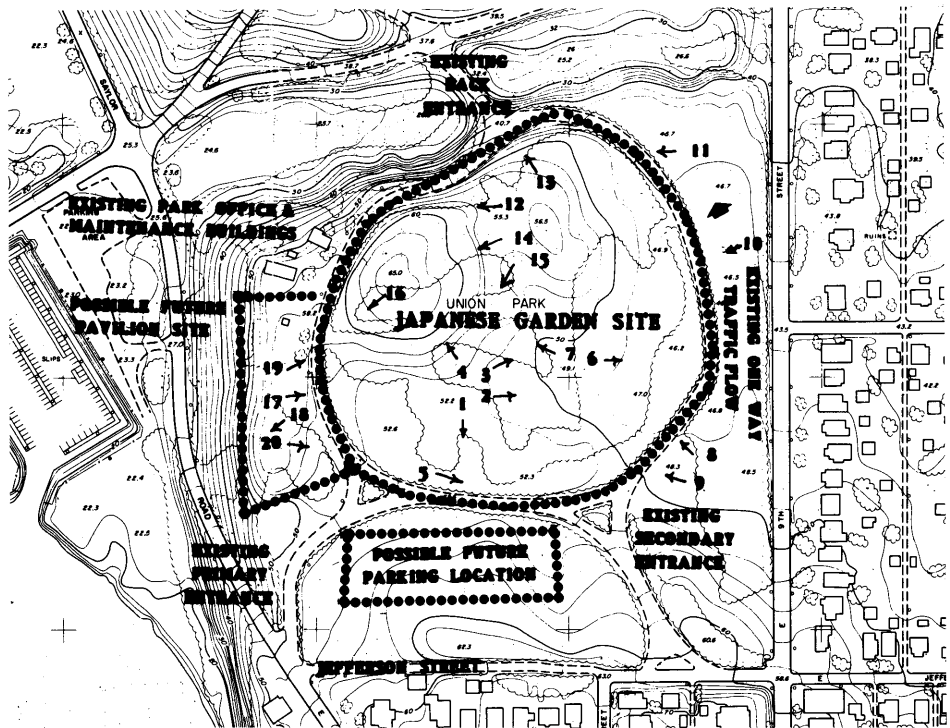
cate system of wooden joinery fitted with pegs. Rare woods, bamboos, and handmade paper will add rich finishing detail. The walls will be made of mud plaster, which is applied in a difficult and time consuming process over a woven bamboo lattice. The result will be a naturally shaded and mottled appearance prized by connoisseurs. The mud plaster is a durable surface which has lasted for centuries on some structures in Japan.

A combination of black clay tiles and a copper sheets will be used on the roof. The teahouse will incorporate an historic partial interior which came from Japan prior to World War II. Traditional woven straw tatami mats will be used for flooring, with the exception of the polished wood veranda.

A Japanese teahouse is designed for one purpose only: to provide a place for the ritualized drinking of tea. The ancient tea ceremony has evolved dramatically over the centuries, and is a condensation of Japanese history and culture. In fact, it is not possible to fully appreciate Japanese culture without understanding the art form of the tea ceremony.

When completed, the Japanese Friendship Garden, teahouse and pavillion will comprise a unique cultural attraction for Iowa, unparalleled in quality and authenticity any where in the United States. ■

Jeanine Gazzo is president of the Des Moines Japanese Teahouse and Garden Association Inc. and a Des Moines lawyer.



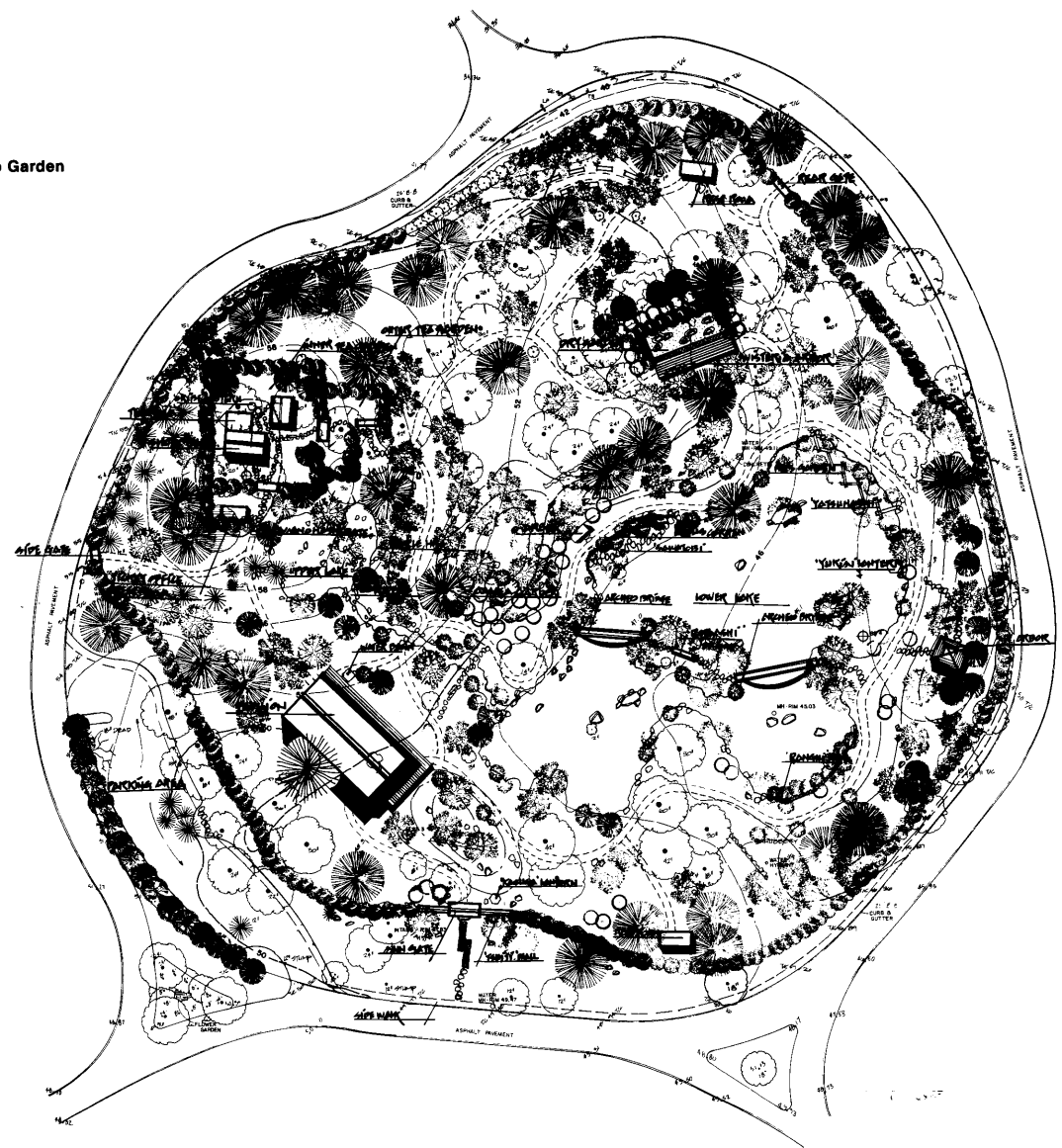
Architects
 J. Hirai Architects
 Douglas Sires Architects

Engineers
 Shive Hattery

Local Landscape Architects
 Crose Gardner Associates



Site Plan
Japanese Friendship Garden
Des Moines, Iowa



Cedar Rapids Ground Transportation Center

The Ground Transportation Center's openness, connection to outdoor plaza spaces and mixed use program emphasizes the human interchange and pluralism that has historically been an essential characteristic of the urban experience.

The design of the Cedar Rapids Ground Transportation Center communicates the importance of its role in the community. It is a role equal to that of the train stations of most European cities, which historically are major elements of each metropolis or burg and are integrated with, and flow into the heart of the city.

Taking a lesson from these train stations, this Ground Transportation Center presents a grand clearspan space for people, depositing newcomers and visitors at the place of greatest urban concentration and encouraging a casual coming together in the downtown.

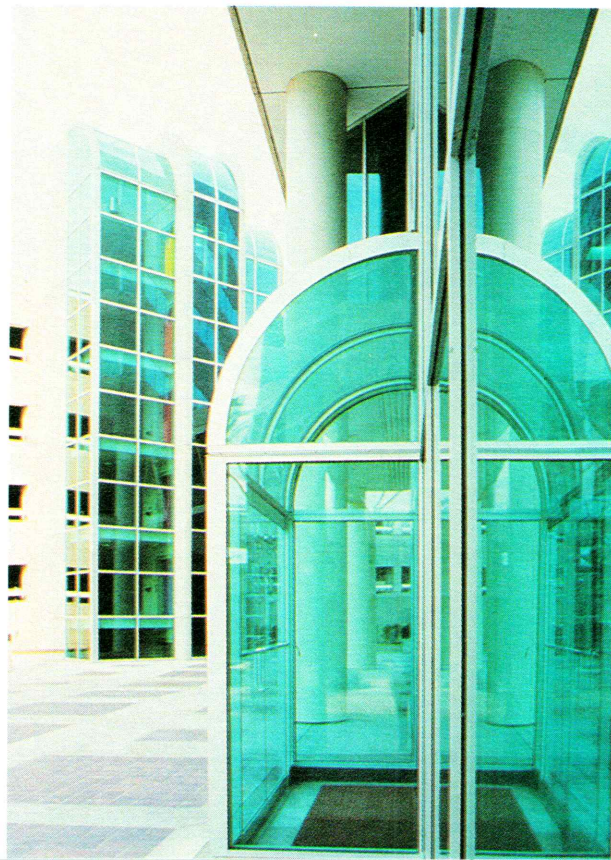
The Cedar Rapids Ground Transportation Center includes a city terminal, inter-city terminal, public plaza, and a 12-story office tower. It is directly connected to a 500-car municipal parking structure and the new public library. In addition, the air-rights located above the city terminal are designed to accommodate 6-9 stories of senior citizen housing.

The overlapping and interweaving of these different uses is a critical component in achieving the architects' original goals of establishing

a hub of activity. The complexities of meshing several functions actually makes transit more appealing and easier to use. One does not simply come to a drop-off point or waiting station; instead one comes to a major place where there is lots to do, where several different activities – opportunities for culture or commerce – present themselves.

During the preliminary design phase the architects developed several design concepts for transportation, housing, retail, and office components that resulted in a "design evaluation matrix" of possible Ground Transportation Center configurations. Based on this evaluation of alternatives, a plan was selected which met all the functional criteria and satisfied the often contradictory public use and private-use requirements.

The City bus system (public transportation) and the intercity carriers (privately operated) are separate transit elements, operationally distinct. The plan separates their terminals by a diagonal limited-access road which accommodates a taxi stand, auto pick-up and drop-off







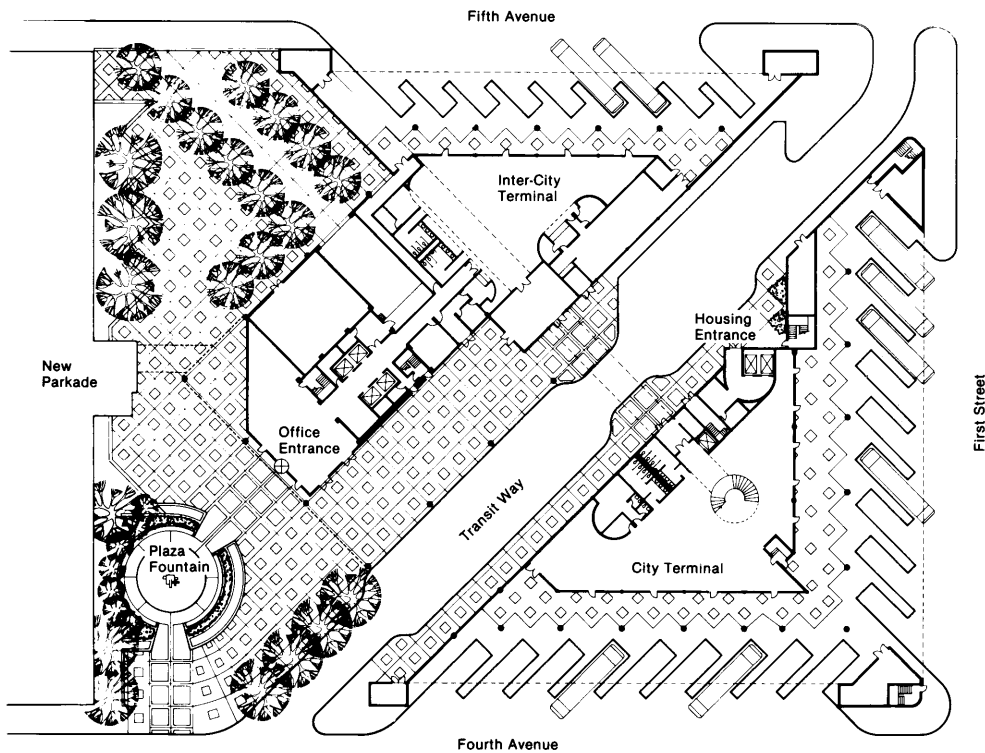
area, and mini-bus service. The separate terminals are linked at the second level by a glass enclosed skywalk, a system which also continues across Second Street to a 500-car parking garage. Entrance lobbies for office space and proposed air-rights housing are accommodated on the end of each terminal.

The full-block complex of Ground Transportation Center and the office block has been rotated 45° from the Cedar River and from the typical grid of streets in Downtown Cedar Rapids. This is a visual cue that something important and unique to the downtown occurs here. Also, the landmark quality of this major gateway offers a device for way-finding within the Cedar Rapids cityscape. The 45° rotation of the square-plan office tower creates views up and down rather than directly across the river, resulting in dramatic exposure for a large number of offices. However, the architecture of the elevations—the same on all sides—remains oblivious to the presence of the river as regional geographic feature.

Materials are from an agreed-upon palette used in a consistent design vocabulary throughout the complex. Pre-cast concrete, green-tinted skylights and reflective silver window walls are used throughout and even carried to the adjacent parkade. Story-high tri-cord trusses carry a roof which extends over passenger loading areas and pedestrian walkways. The large space frame roof structure, which is exposed on both interior and exterior, is the bus lobby's most striking feature. This visually entertaining web combined with an extensive use of glass, sidewalls and a cascading glass roof, creates dramatic shadow patterns and a direct link to the outdoors and the changing sky. In addition, these see-through walls increase safety and security and set aside user's negative perceptions of bus station. As a result, passengers can wait and easily view incoming buses; little artificial lighting is needed during daylight hours.

This facility's openness, combined with the surrounding outdoor plaza spaces and the mixed-use goals, focus the space both outward and inward, encouraging the type of interchange and pluralism that has always been an essential characteristic of the urban experience. ■

Patricia Zingshiem



Site Plan

Architect and Engineers

Cannon Design, Inc.
Architects and Engineers

Olson Popa Novak, Architects, P.C.

Brown Healy Bock, P.C.

Associate Architects

Shive-Hattery & Associates

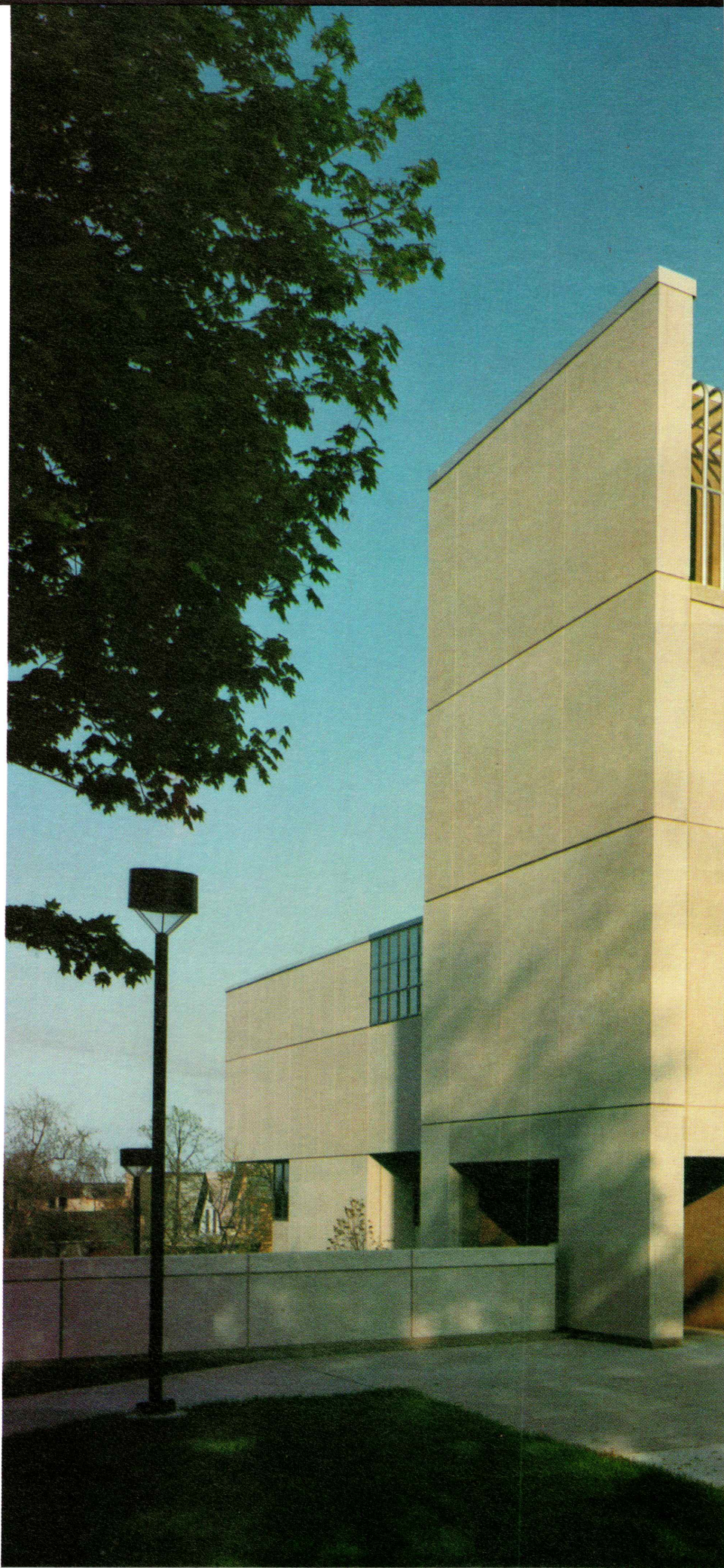
Krishna Engineering Co., Inc.



Eileen P. Vadoros

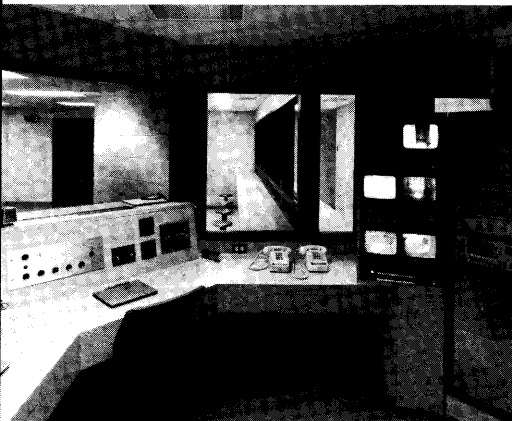
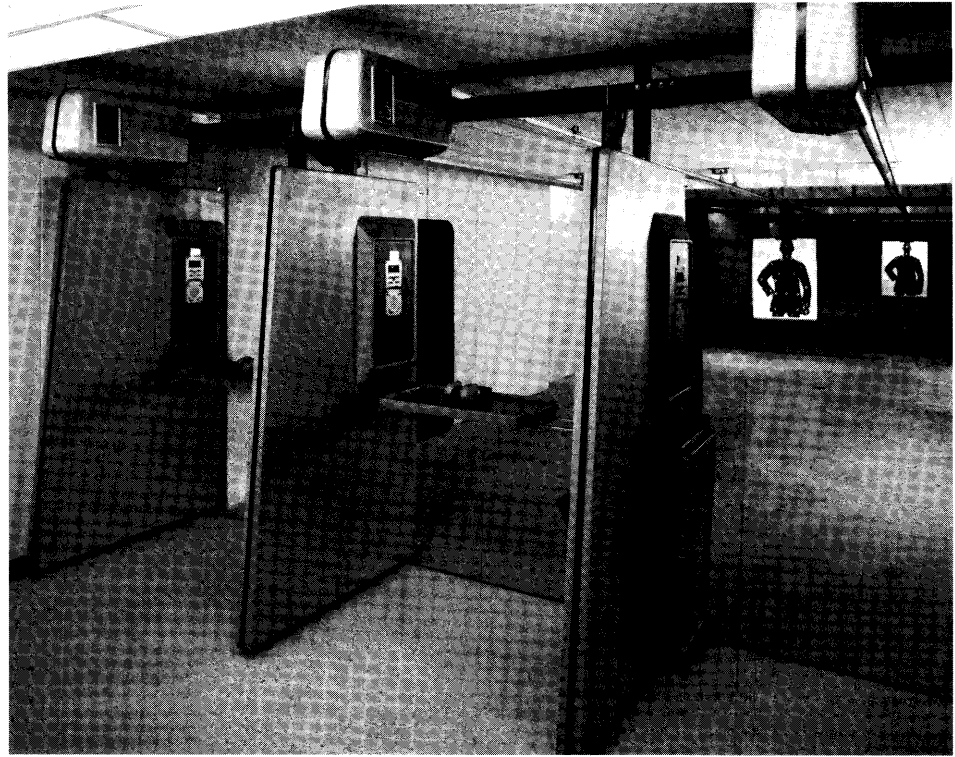
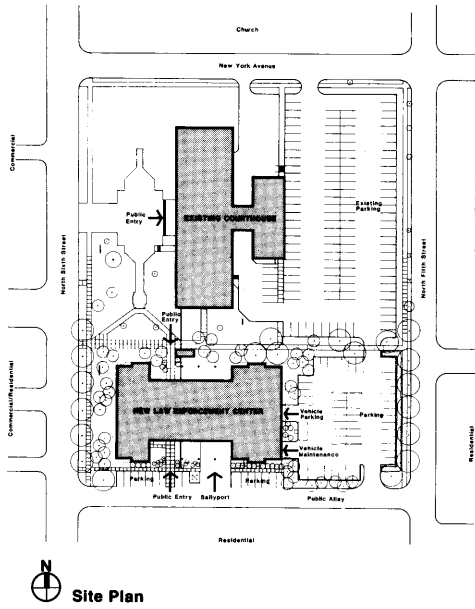
Sheboygan County Law Enforcement Center

The Sheboygan County Law Enforcement Center strives to form a visually and functionally cohesive center for county government at the end of an avenue containing the city's public buildings.





► Firing Range



▲ Communications Center

Sheboygan County Law Enforcement Center is an effective response to conditions and objectives that are widely shared by county governments today.

A primary objective was the development of a contemporary facility for detention which would provide a humane, secure and efficiently administered environment — and convey a positive image as an important public amenity, not just a jail facility.

An important additional consideration was the need to integrate the building with an adjacent courthouse on the National Register of Historic Places, to form a visually and functionally cohesive center for county government at the end of an avenue containing the city's public buildings.

Functions to be housed included a new 93-capacity county jail, replacing outmoded facilities in the courthouse building; offices for the Sheriff's Department; and support activities.

Designers responded with a three-story building functionally divided by floor housing state-of-the-art corrections spaces, systems and equipment.

Vehicle storage and support spaces are on the ground level. A sloping site allows access to the vehicle area from the exterior parking to the east, while keeping functions such as the firing range and mechanical equipment below

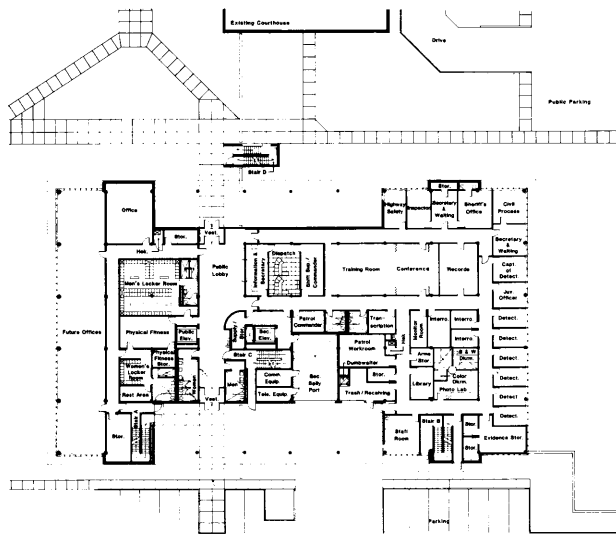
grade.

The first floor accommodates the Sheriff's Department offices. A public lobby connects the south entry and parking with the entry to the adjacent courthouse and green space to the north. Program improvements include centralized office space for patrol and detective staff, facilitating coordination of department functions; and centralized record-keeping areas, allowing for better storage and retrieval of often-used records.

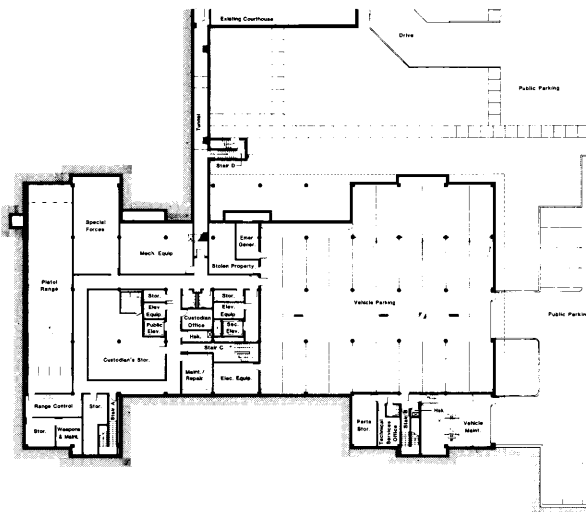
All detention functions are housed on the second floor. Inmate spaces/dayroom modules and work release dorms occupy the perimeter. These are monitored from an enclosed communications center with closed-circuit television including video and sound track. A penthouse contains the outdoor recreation area and mechanical equipment.

An underground tunnel provides a physical link between the two facilities to be used for transportation of inmates and sharing of mechanical and electrical services.

Integration between new and existing facilities is achieved visually and structurally. The low, broad mass of the new building relates to the two-story base of the adjacent seven-story building without using an imitative vocabulary. The precast concrete harmonizes with the limestone of the old, and a glazing pattern recalls the courthouse's windows. ■



First Floor



Ground Floor

Project

Sheboygan County Law Enforcement Center
Sheboygan, Wisconsin

Owner

County of Sheboygan
Sheboygan, Wisconsin

Architects

Durrant Architects, Inc.
Madison, Wisconsin and Dubuque, Iowa

Structural, Mechanical,

Electrical Engineer

Durrant Engineers, Inc.
Madison, Wisconsin and Dubuque, Iowa

Construction Manager

Bray and Associates
Sheboygan, Wisconsin

Photographer

Skot Weidemann

Building Area

81,700 Square Feet

Capacity

93 Inmates

Cost of Construction

\$6,896,800

Completion Date

December 1981

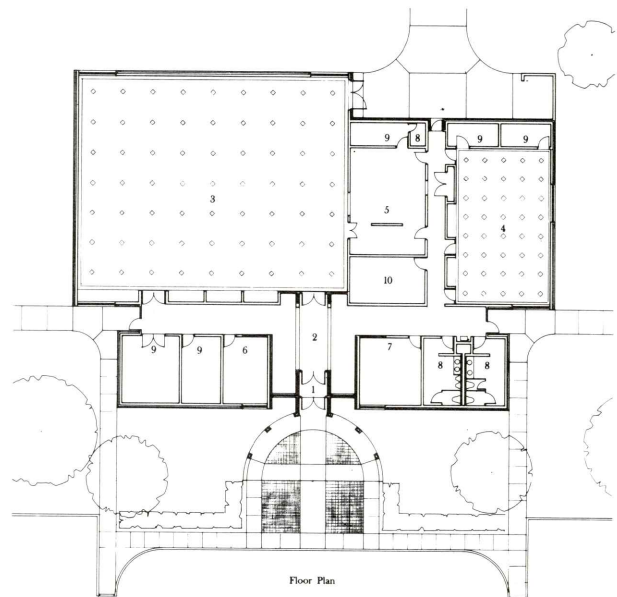
Grundy Center Community Center

While countless other small Midwestern towns struggle to survive, Grundy Center has very visibly reaffirmed its vitality with a progressive, spirited community center financed without either special taxes or federal government supports.

Grundy Center, a relatively small town in north-eastern Iowa, is somewhat of an anomaly in the state of Iowa. Many other small towns that are remotely located from urban centers are struggling to survive. Grundy Center, however, is not struggling; it is thriving and its community center is a physical example of this success. The center was financed entirely by private contributions with no special taxes or federal support. The community center is the most important public building constructed in Grundy Center in nearly 30 years.

An ambitious program called for a large meeting/banquet room seating 360 and a small meeting/dining room seating 60 as the principle functions of the center. An empty block located one block off the main business district was available for the 10,129 square foot center.

The building was located in the center of the site facing the business district and on axis with the county courthouse. The axis continues inside the entrance of the building with a translucent skylight over a patterned quarry tile floor and terminates at the entrance to the community room, the building's main space. The kitchen is located between the community room and the smaller meeting room to allow direct service to both rooms. The parapet height of the rear portion of the building, established by the ceiling height of the community room, is maintained around the lower roof of the kitchen and meeting room to hide necessary mechanical equipment. Support functions which require a lower ceiling height are placed in the two smaller masses flanking the entry. Following the example of existing public buildings in town, the community center is constructed of terra cotta brick with a dark brown brick base which rises to full building height at the entrance. A terra cotta brick exedra is placed at the entrance to create a strong sense of entry. This exterior space is intended to connect the use of the site with the interior building functions, and to literally reach out and establish a symbolic relationship with the town's business district and courthouse as a city center. ■



Project

Grundy Community Center

Location

Grundy Center, Iowa

Owner

Grundy Center

Architect

Charles Herbert & Associates

Consultants

Charles Vanderlinden, Structural

Paul Walters, Mechanical & Electrical

Contractors

R.H. Grabau, General

Brown Htg & Cooling, Mechanical

Lockman Electric, Electrical

Photographer

Charles Herbert & Associates

Completion Date

April 1983

WILTS
COMMUNITY
ROOM



The Food's Out of This World . . . But the Place Lacks Atmosphere

Be it a cave in the snow, manipulations with a cardboard box or sheets draped over the dining room chairs, every child, at some time, has the desire to construct shelter.



Editions of Sweets Catalog may someday contain a selection of radar controlled meteor detectors equipped, of course, with laser guns that would automatically destroy threatening meteors. Or building entrances may literally "suck" one up and in through a vacuum tube. Sound far-fetched? These may not seem like practical ideas on earth, but what if one were designing for an environment such as that found on the moon?

This is exactly what Des Moines students were challenged to do in conjunction with the Iowa Chapter AIA 1985 winter meeting. Eighty-six Talented and Gifted (T.A.G.) sixth, seventh, and eighth grade students participated in a competition to design a restaurant for the lunar surface. They were guided by members of the T.A.G. program and twenty architects from the

Des Moines area. Seven entries were judged winners, but odds are good that everyone, including the architects, felt it to be a most rewarding experience.

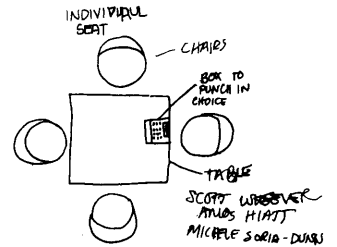
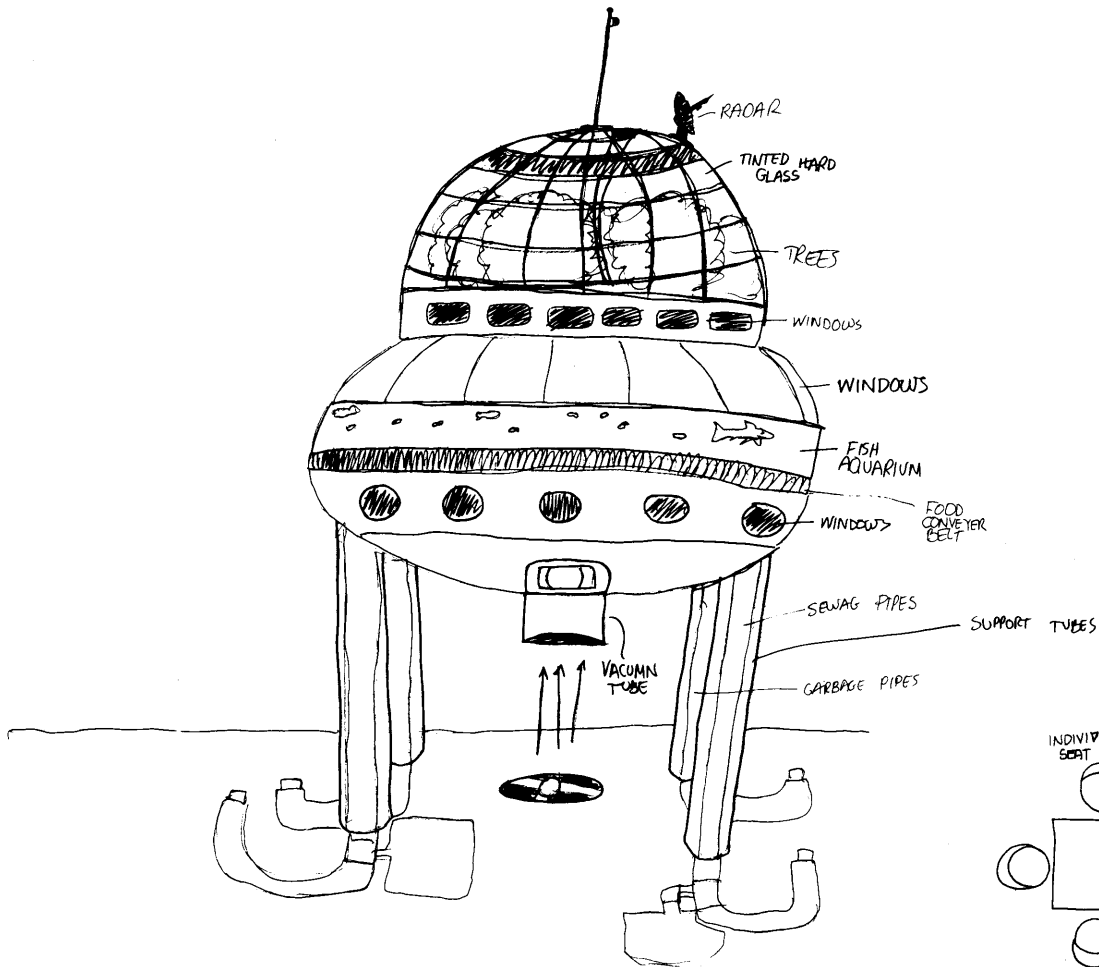
The day long activity taught the students a little about architects and a lot about the process of solving an architectural problem. It allowed full freedom of expression and encouraged imaginative thinking. It dealt with the varied elements of form and function. And it was just plain fun, a beautiful example of how successful interaction between the professional and the educational community can be.

Unfortunately, few people, including many educators, have any understanding of the art of architecture. And if something is not understood, it is very likely to be low on one's scale of values. Indeed, this lack of understanding may contribute to the enormous gap perceived today between the profession's values and the public's.

Interaction is the key. Understanding the language of architecture is a way by which one can come to appreciate the art form. It is a universal language of form, color, texture, light, harmony, rhythm, material, scale, proportion, space and time. It speaks to us every day and yet remains inaudible to many.

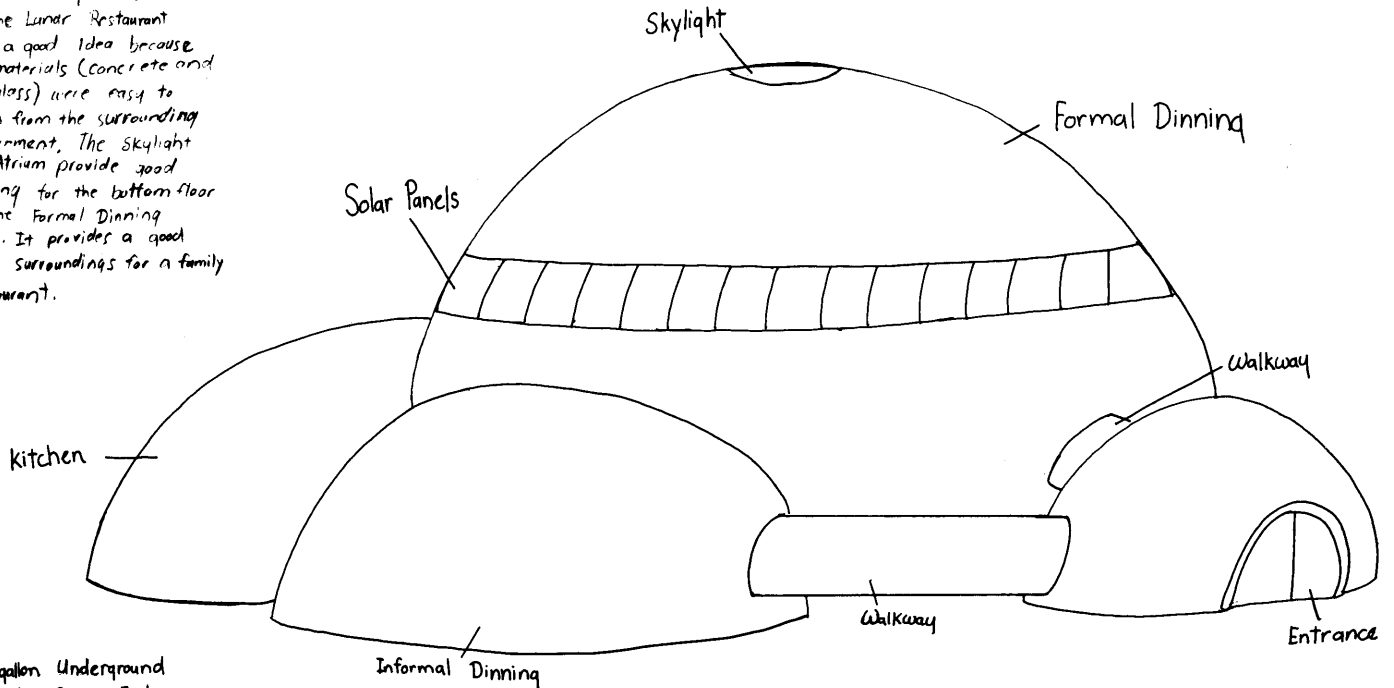
Every child, at sometime, has the desire to construct shelter. It may be a cave in the snow or manipulations with a cardboard box. Regardless, it is at this state of intellectual development that the teaching of the language of architecture should begin. Hopefully, the lunar experience touched the minds of those children involved and instilled a curiosity and desire to explore further this most complex of all art forms. ■ *William Anderson*





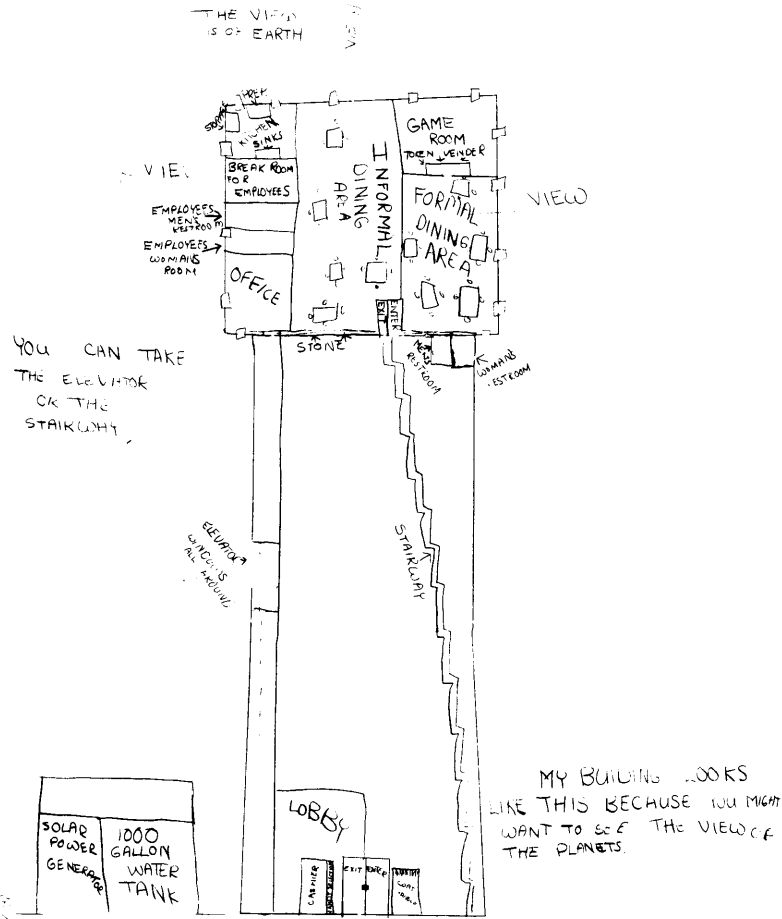
I believe my Plans.....
for the Lunar Restaurant
were a good idea because
the materials (concrete and
Fiberglass) were easy to
obtain from the surrounding
environment. The skylight
and Atrium provide good
lighting for the bottom floor
of the Formal Dining
room. It provides a good
happy surroundings for a family
Restaurant.

Larry Starner

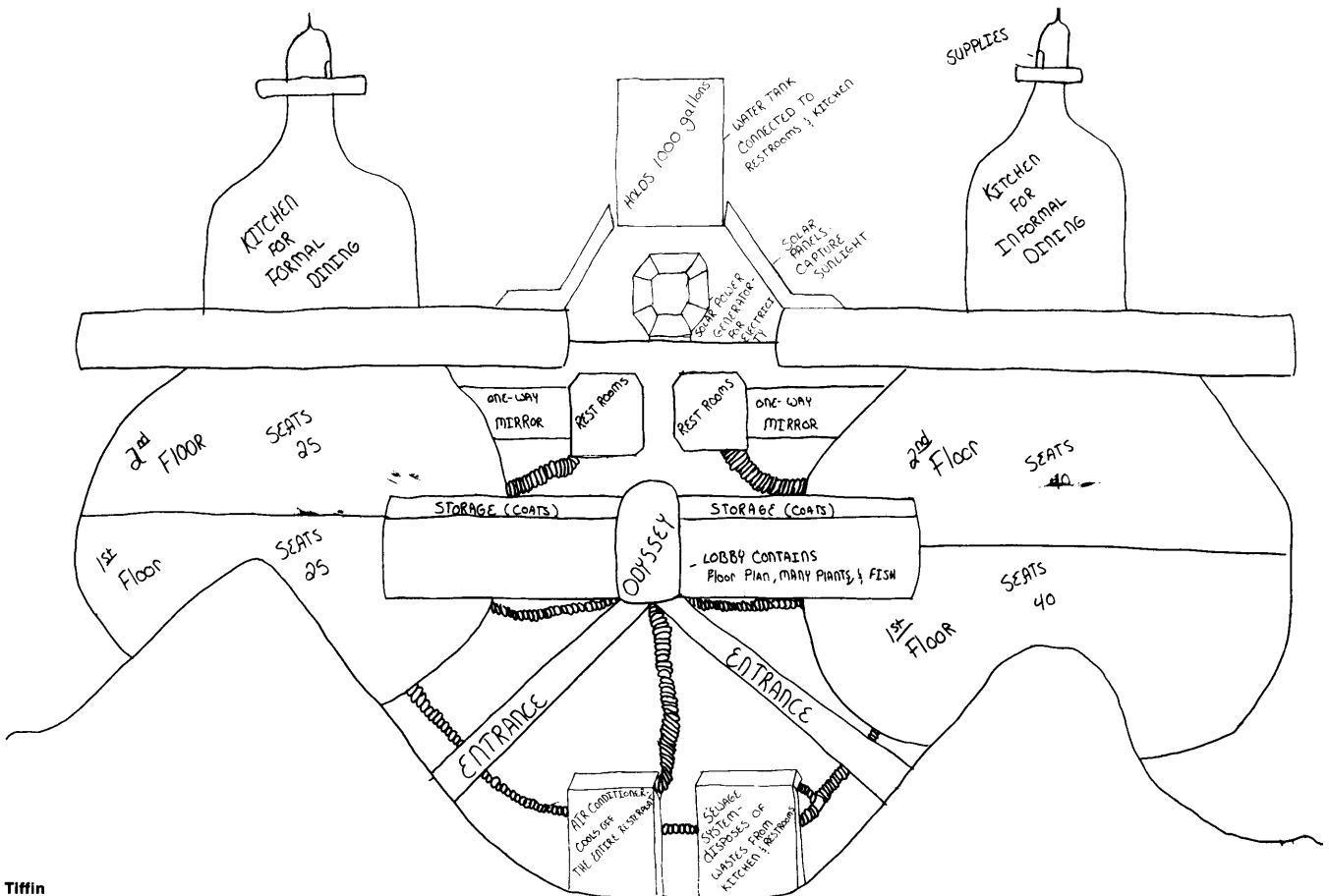


1000 gallon Underground
Water Storage Tank
Pipeline Running to
Kitchen

Jill Friesz



Ryan Tiffin



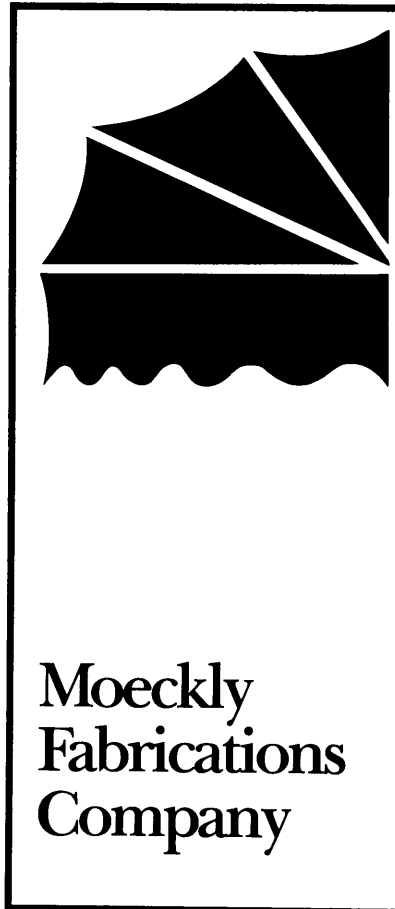


**A CATALOG OF PRODUCTS
WITH DESIGN IN MIND.**

SEND FOR YOUR FREE COPY TODAY.

DESIGNER TOOLS, 1224 25th St, Des Moines, IA 50311

Name _____
 Address _____
 City _____ State _____ Zip _____



**Moeckly
Fabrications
Company**

**Complete
Awning and
Canopy
Contractor**

R.R. #2, Box 22
 Huxley, IA 50124
 Phone (515) 597-2680

**Your Dependable
Source For**

Porcelain Enameled Panels-Pefco

Space Frames-PG Structures

Metal Roofing-Zip Rib

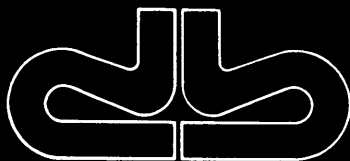
Wood Fibre Decking-Martin Fireproofing

Facias, Copings and Gravelstops-W.P. Hickman

Folding Partitions-Emco

Sound Doors-Industrial Acoustics

Translucent/Insulated Panels-I-Wall



david bear inc.
 construction components

515/262-8251 319/365-7133
 In Iowa 800/362-2786

**The Iowa Architect
Is Now
A Regional Publication**

The Iowa Architect is mailed, bi-monthly, to 6000 primary decision makers in the construction and design fields in 6 states.

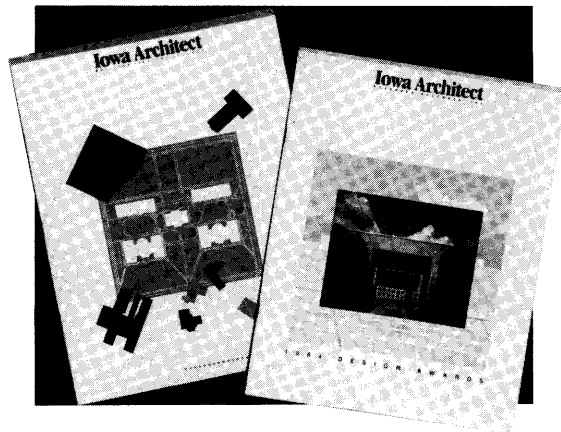
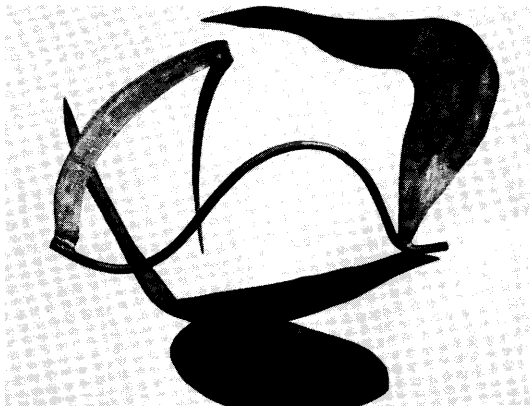
**IOWA
NEBRASKA
MISSOURI
KANSAS
OKLAHOMA
WISCONSIN**

Build awareness of your products or services. Advertise in the Iowa Architect.

Contact: Tom Holtz
 733 19th Street
 Des Moines, Iowa 50314
 (515) 280-3068

Reynolds Metal Company

"Albata", an aluminum sculpture by Arthur Gibbons of New York City, will be presented to the recipient of the 1985 R. S. Reynolds Memorial Award for distinguished architecture using aluminum, along with a \$25,000 honorarium. Established in 1957 in memory of the founder of Reynolds Metals Company, the annual award is administered by the American Institute of Architects. ■



"Images of Minnesota"

"Views of St. Paul (Wabasha Streetscape)," by Minnesota artist Nicholas R. Brewer, is included in "Images of Minnesota," an art exhibition from the collections of the Minnesota Historical Society on view at the James J. Hill House Gallery through August 24, 1985.



The exhibition is on view during regular Hill House hours, Wednesdays, Thursdays and Saturdays from 10 a.m. until 4 p.m. The James J. Hill House is located at 240 Summit Avenue in St. Paul. ■

Iowa Architect Wins Top Award

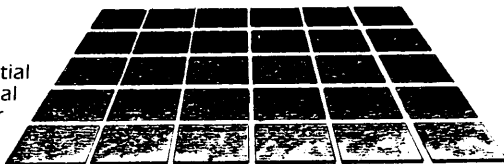
Holtz/Wilson Design, Inc. has won the Iowa Art Directors Association Silver Award for Excellence in the Editorial Design/Magazine category for these cover designs for the Iowa Architect Magazine. A number of editorial layouts from the Iowa Architect were also accepted in the annual show of Iowa's best in graphic design, photography and illustration. ■

BEAUTIFUL, DURABLE FLOORS WITH IAC

DURA-PAVERS™
GLAZED CERAMIC TILE

IAC is so confident of the long-lasting beauty and quality of their new Dura-Paver glazed ceramic tile that they guarantee it against foot wear for a full 25 years. Available in six contemporary colors, Dura-Pavers are available in 4x8, 8x8 and 12x12 sizes with matching trim. The most contemporary, beautiful and durable floor available today...and IAC guarantees it against wear for 25 years!

For Residential and Commercial Indoor or Outdoor Applications...



SUNDERLAND BROTHERS COMPANY

GUARANTEED AGAINST FOOT WEAR FOR 25 YEARS!

Distributed by:
301 S.E. 8th Street
Des Moines, Iowa 50309
Phone: (515) 282-2826

609 N. 46th Street
Omaha, Nebraska 68132
Phone: (402) 553-2233



THE MIDWEST'S MOST COMPLETE COMMERCIAL CARPET LINE

Backed up by professional carpet people to assist you in your carpet needs.

Des Moines (515) 265-9801
Iowa 1-800-362-1811
Out of State 1-800-247-1708



Katie Turner
Commercial Floor Covering Manager



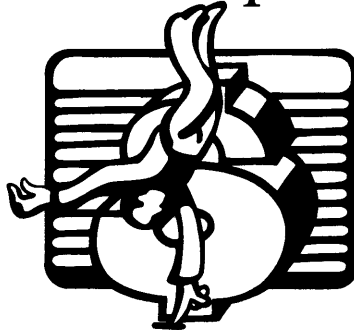
P.O. 1462 - Des Moines, Iowa 50306



PUSH PEN STUDIOS

TYPE, PRODUCTION ART,
PROCESS CAMERA, AND STRIPPING
1707 HIGH STREET, DES MOINES, IA 50309
(515) 244-1743

Balance: The cornerstone of every financial plan.



Send today
for your copy.
Or call
(515) 223-6181

Mail to:
Joyce E. Larson
Suite 210
2910 Westown Parkway
West Des Moines, IA 50265
 Yes, please see that I receive
your free 24-page guide,
*Financial Planning: How It
Works for You*. I understand
there is no obligation on my
part.

Name _____
Address _____
City _____
State _____ Zip _____
(____) _____
Phone _____

IDS AMERICAN EXPRESS
Personal Financial Planners
The best investment you'll ever make.

© IDS/American Express Inc., 1984

An American Express Company

A/E STAFF EXPANSION

Fast growing Midwest and Southeast offices of top A/E firm seek career-oriented professionals to support broadening client base. Outstanding opportunities for self-motivated individuals to play a key role in design and development of large health-care, criminal justice, educational and commercial projects. Join a company which offers advancement and stimulating environment, job security and excellent compensation and benefits. Please submit letter of application and resume for the following positions:

- PROJECT ARCHITECTS
- INTERN ARCHITECTS
- JOB CAPTAINS
- SIGNAGE DESIGNER
- INTERIOR DESIGNER

Send to Director of Personnel.
Box AE-0585
c/o Iowa Architect Magazine
733 19th St.
Des Moines, IA 50314

Equal Opportunity Employer

Yes We Do Support Local Business!

In fact, we can be the best business partner you'll ever have. There's no question that local business is the backbone of our community. That's why we're committed to providing every important business service we can.

Come to us for commercial loans of all kinds. Business checking accounts that pay money market — even tax-free — interest. Strategic employee benefits programs. Pension and profit-sharing programs. Accounting and financial management services. Credit card services. And more.

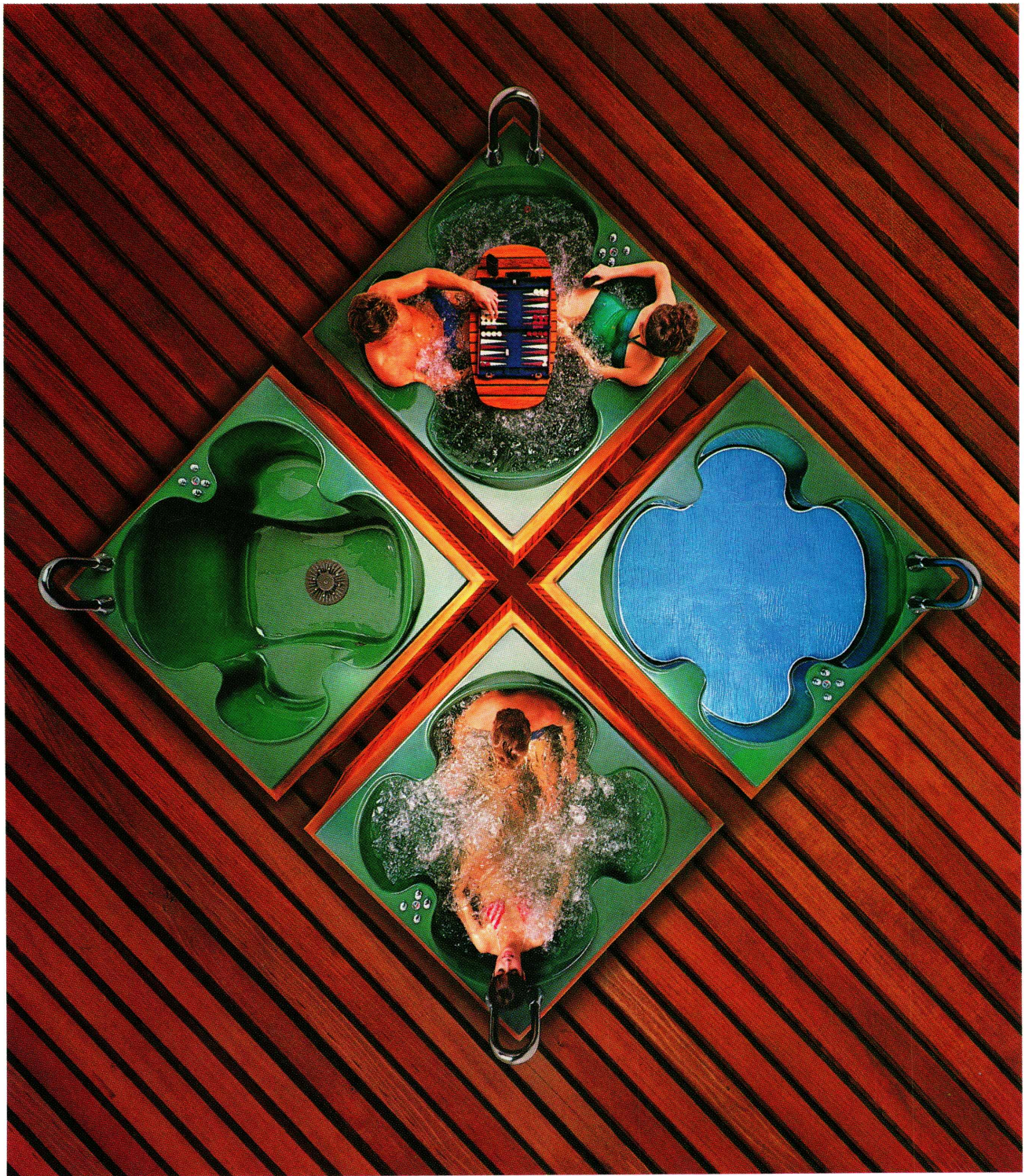
Yes we do support local business!
That means we support you.



**Hawkeye
Capital
Bank & Trust**

Member Hawkeye
Bancorporation and F.D.I.C.

East 5th & Locust
Phone 244-5111

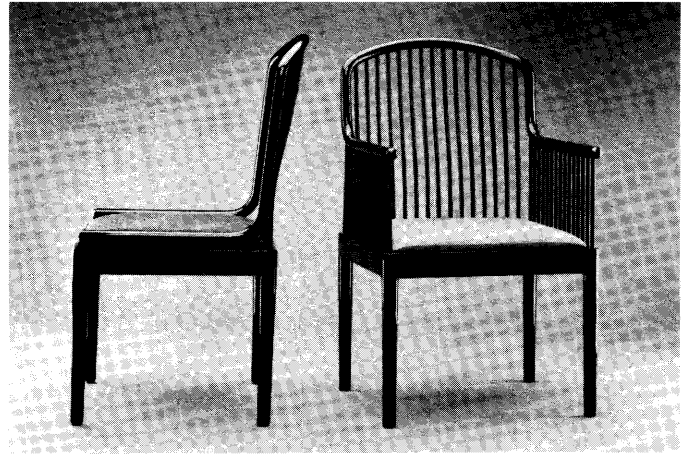


THE BOLD LOOK
OF **KOHLER**

For endless levels of comfort step into the Harmony™ Spa. Luxurious for two yet spacious enough for four. A truly portable spa with redwood enclosure, floating insulation cover and optional teak table. In seven beautiful colors. For more details see the Yellow Pages, or send \$2 to Kohler Co., Dept. HA5, Kohler, Wisconsin 53044.



Stendig International's Andover chair is destined to become a contemporary American classic. Designed by SOM's Davis Allen, the beech frame and upholstered webbed plywood seat are available in fine stained or glossy finishes. Available in side or armchair versions. ■

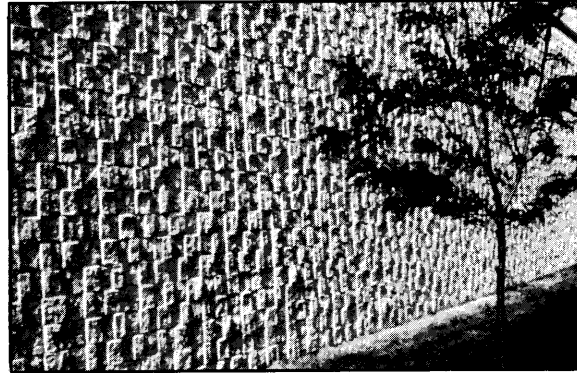


Peanut Chair – The PC, a new child's chair from Kartell USA is good-looking and practically indestructible. Molded from polypropylene, it is also comfortable and very easy-care. Since poolside splashes or sudden rainstorms won't harm the finish, the chair can be used outdoors as well as indoors. It comes in bright red, blue, yellow and classic white.

Contact Kartell USA, P.O. Box 1000, Easley, SC 29640. ■



Gifted Japanese designer Ikuzi Teraki has fashioned a collection of elegant tableware handcrafted of the finest white porcelain finished in a clear glaze with matte black bases. Each piece bears the designer's seal. Included are a serving bowl 3½" high, 9" diameter; serving platter 12½" square; small plate 6" square, saki carafe and cup and black lacquered chopsticks. All at Sointu, New York. ■



Marquart Introduces Shadow Stone

Every building is an original with Shadow Stone Designer Series. Each two-block combination provides six different shapes. Randomly selected and laid in running bond, Shadow Stone creates a unique exterior that ensures no two buildings will ever have exactly the same pattern! Shadow Stone has been used successfully in residential, industrial and office developments, as well as in religious and commercial buildings. Shadow Stone is available in a variety of sizes, and color may be integrally mixed into the block or applied with conventional surface treatments.

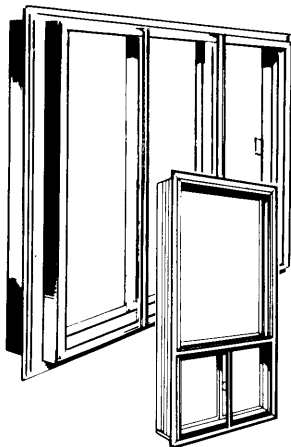
Shadow Stone is versatile, beautiful and economical. It's also virtually foolproof, since it can be laid right side up or upside down to achieve unique patterns. Shadow Stone, a copyrighted pattern from Designer Blocks, Inc., is available today at Marquart. For details, call us at the number below, or visit our Waterloo location today.



MARQUART
CONCRETE BLOCK COMPANY

110 Dunham Place, P. O. Box 990
Waterloo, Iowa 50704 (319)-233-8421

Specify GERKIN ...when "typical" isn't enough.



If you think you know all about Weatherliner Thermal Windows, we invite you to think again!

Nationally Certified... fully tested... field proven... we deliver on our promises!



RESIDENTIAL • COMMERCIAL
NEW CONSTRUCTION OR REPLACEMENT SYSTEMS

Call or write today, for a Complete Technical Catalog.

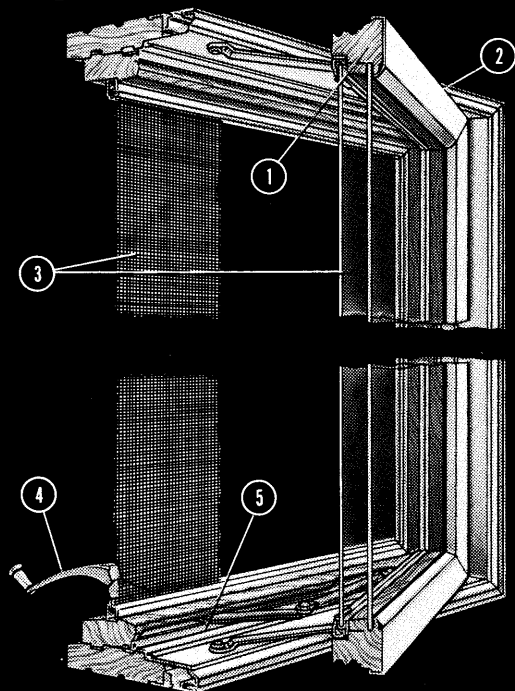


THE GERKIN COMPANY

1501 Zenith Dr.
P.O. Box 3203
Sioux City, IA 51102 • 712-255-5061

© 1985 Gerkin Co., Sioux City, IA

REMODELING OR BUILDING?



Specify

Pella "energy-tight" Casement Windows

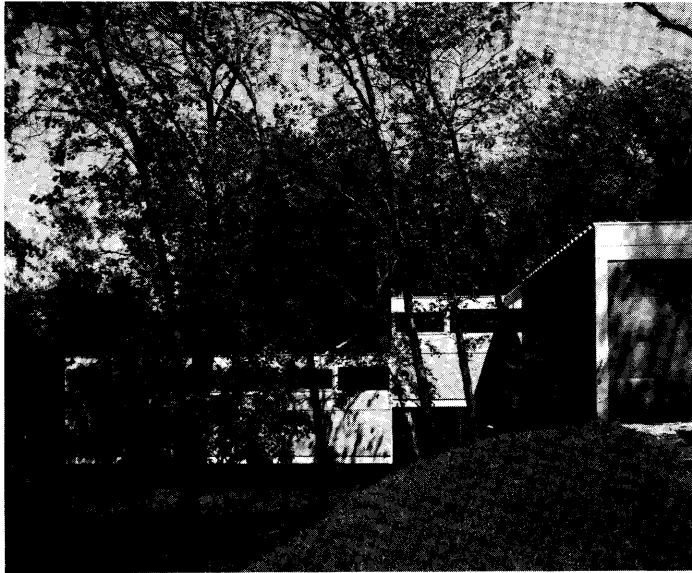
Lower fuel costs, reduce maintenance and increase your comfort with (1) the natural insulating qualities of wood, (2) a low maintenance exterior that needs no painting, (3) double glazing and self-storing screens, (4) sash which cranks to center of opening for easy washing of outside glass, (5) soft vinyl weatherstripping that seals entire perimeter. Look in the Yellow Pages for the planning center that is nearest you.



Des Moines
Ottumwa
Fort Dodge
Waterloo
Carroll

Rock Island
Cedar Rapids
Sioux City
Omaha
Dubuque

Ask for Free Brochure on Pella Products



Illinois House Recognized by Architectural Record

Architectural Record has selected the Hoekstra house designed by architect David C. Hovey as a "Record House" for 1985. The house was designed and constructed in three months by using industrial techniques and standard, modular products. Eleven 10'-0" wide by 9'-0" high by

24'-0" long factory-assembled steel modules create the three bedroom, two bathroom, three-car garage residence. The modules were erected in one day.

Architectural Record noted the cost to be less than half of the \$90 to \$100 per-square-foot building cost typical to the area. The residence is located in Homewood, Illinois. David Hovey practices in Chicago, Illinois. ■

Important Facts on Asbestos in Buildings

The Safe Buildings Alliance has published *What You Should Know About Asbestos In Buildings*, a booklet designed to help the public develop sensible solutions to the asbestos issue and avoid the potential health risks resulting from hasty and often unnecessary

Presented in a question-and-answer format, the booklet provides valuable information on identifying asbestos-containing materials in buildings and remedial actions for controlling asbestos exposure.



To order copies of *What You Should Know About Asbestos In Buildings*, write the Safe Buildings Alliance at: 655 Fifteenth Street, N.W. Suite 1200 Washington, DC 20005 or call: (202) 879-5120 ■

Interior Improvements Cost as Much as Building Shell

According to a recent survey of "100 Interior Design Giants" by *Interior Design* magazine, the average base building construction cost of a high-rise building over 25 stories is \$59.48 per square foot (\$43.61 per square foot for a building under five stories), while the average cost for creating and furnishing new office space in a building is \$59.05 per square foot. The average building construction cost is based on BOMA rentable square feet and does not include an average work letter of \$15.02 per square foot. The average cost for creating new office space is comprised of \$36.03 per square foot for tenant improvements and \$23.02 per square foot for furnishings. ■

Caterpillar Power Systems Check Out The Economics

Independent, on-site power can be the economical solution to your industrial or commercial needs. And if you want economy *plus* reliability, check out Caterpillar engines and power systems from Gibbs/Cook. Cat systems are backed by Total Product Support, including design, installation, inspection and maintenance. Features like 24-hour parts availability. And the most modern in-shop service and testing facilities in the Midwest.

Economy. Reliability. Service. You get all three with Caterpillar Power Systems from Gibbs/Cook. Sales and service facilities in Des Moines, Mason City, Fort Dodge and Postville.

YOUR CATERPILLAR DEALER
GIBBS/COOK

...for more than the expected

104th and Hickman Road, Des Moines, Iowa 50322 (515) 270-2800
1100 Highway 34 East, Red Oak, Iowa 51566 (712) 623-5401
4401 Harbor Drive, Sioux City, Iowa 51111 (712) 252-4401

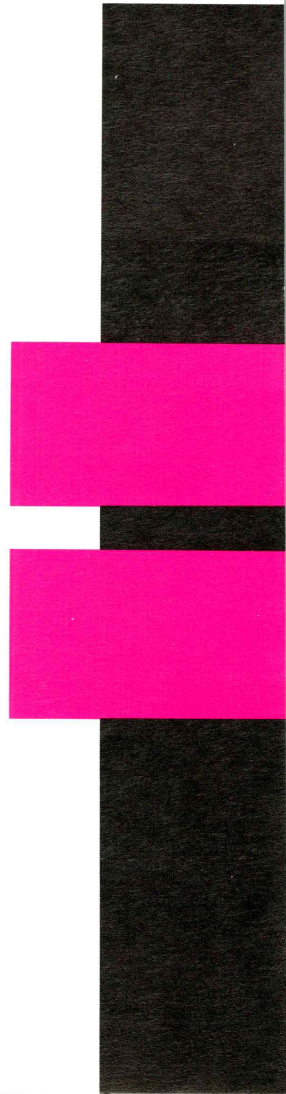
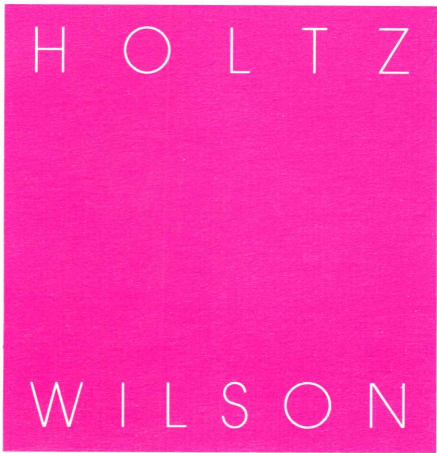
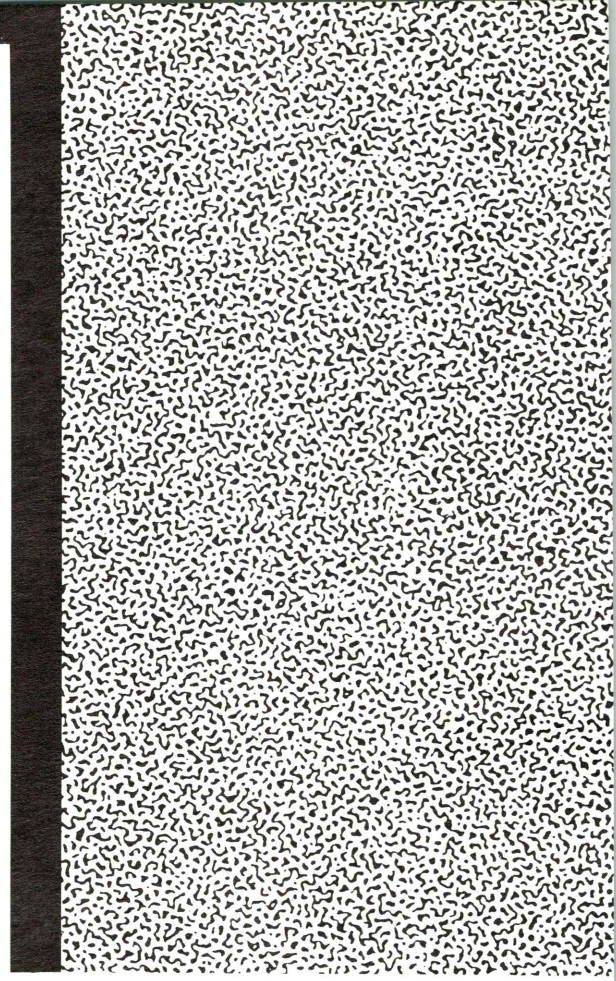
Caterpillar, Cat and  are Trademarks of Caterpillar Tractor Co.

HOLTZ/WILSON DESIGN

733 19th Street

Des Moines, Iowa 50314

515/280-3068



New Book on Sullivan's Minnesota Masterpiece

The National Farmers' Bank in Owatonna, Minnesota, designed by the famed Chicago architect Louis Sullivan, has been recognized internationally as an architectural masterpiece since its opening in 1908.

Its genius lies in the purity of its basic form – the structure is a simple cube punctured by two huge arched windows – combined with its fantastically intricate ornamentation. The building was intended to be a "color symphony."

Burgundy and multicolored tapestry brick, green and brown terra cotta, blue and gold glass mosaic, black Belgian marble, and pink sandstone all become part of a carefully orchestrated design. In the banking room about two hundred shades of color are harmonized by the blue-green light that filters through the great stained-glass windows.

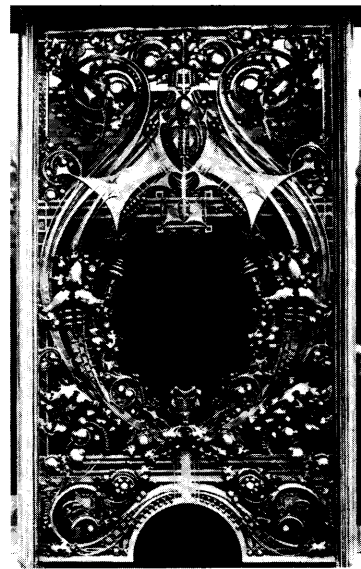
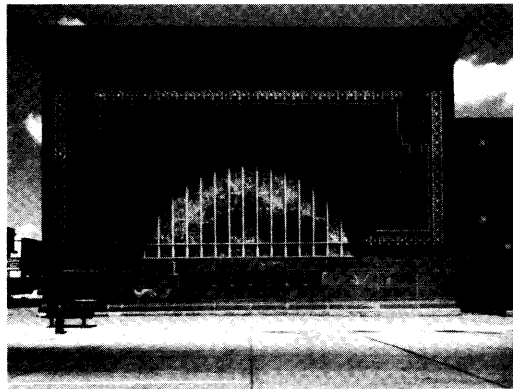
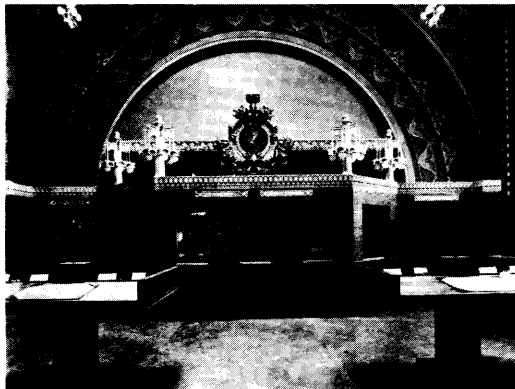
Designed to resemble a giant treasure chest, the building was unique in its time and recognized as the grandest commercial building of the Prairie School of

architecture, the first truly American style of architecture. Today, as the Norwest Bank Owatonna, N.A., the building continues to astound visitors with its wealth and originality of ornament, its glorious colors and its superb craftsmanship.

The Minnesota Historical Society Press has published the most complete history to date of this famous building, *The Curve of the Arch: The Story of Louis Sullivan's Owatonna Bank*, by Larry Millett.

The Curve of the Arch (\$24.95 in

hardcover, is \$14.95 in paperback) is available at select bookstores and can be ordered directly from the Minnesota Historical Society, Order Dept. 753, 1500 Mississippi St., St. Paul, MN 55101. ■



Iowa Architect

DON'T MISS AN ISSUE!

You can receive the Iowa Architect for only \$12.00 a year. Enjoy it yourself or give a subscription to a client or friend.

Send this form with \$12.00 to Iowa Architect, Iowa Chapter AIA, 512 Walnut Street, Des Moines, Iowa 50309.

Name _____

Title/Position _____

Business _____

Type of firm _____

Mailing address _____

City _____ State _____ Zip _____

OHARCO/HI-CO

DISTRIBUTORS, INC.

BURLINGTON *carpets*

CORK-O-PLAST

DECOR TAMBOURS

DOMCO *flooring*

DOWNS *carpets*

DURAFLAKE

FORMICA

GENERAL FOAM

GENUWOOD *flooring*

HYBOND

KENTILE

KORTRON

MARATHON *carpets*

OZITE *carpets*

PERMABRICK

PERMAGRAIN

SANITAS

SYKES *flooring*

WUNDA WEVE *carpets*

1144 No. 11th St.
P.O. Box 1113
Omaha, NE 68101-1113

5685 NE 16th Street
P.O. Box 1356
Des Moines, IA 50313

Allied Glass is *the* information resource for Architects



As the authorized distributor for Alpana Aluminum Products, Semco Wood Windows, Acorn Windows, Doors and Sliding Patio Walls, Mon-Ray Windows, Holcomb Hoke folding partitions, sanymetal toilet partitions, Kawneer Aluminum Framing and Automatic Entrances, we can keep you advised on their latest technological advancements in energy efficient window and door designs.

**For inquiries and
specification information
call Larry Fishwild
at (319) 364-2495
or 1-800-332-8456
Larry's experience and
expertise offer you an
information resource that
you can have
confidence in.**



838 First Street N.W.
Cedar Rapids, IA 52405

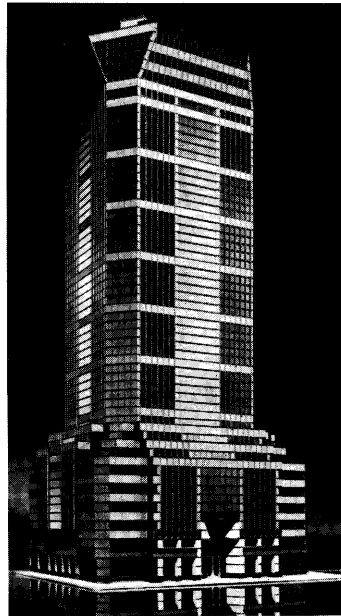
Energy-Efficient House Can Have Good Air Quality

A tightly insulated house can have acceptable indoor air quality when relatively minor changes are made to its heating, ventilating and air conditioning systems, according to a study conducted by Honeywell and the Minnesota Department of Energy and Economic Development (DEED).

The study also indicates that substantial energy savings are lost when homeowners and occupants fail to fully insulate their homes because of perceived health risks.

The study has attracted worldwide attention because it addresses the debate between energy proponents and health advocates. On one side are those who believe that the energy shortage is critical and that conservation measures must be implemented at all cost. On the other side are those who propose that nothing be done because the health risks are too great.

Copies of the study may be obtained by writing DEED, 900 American Center Building, 150 E. Kellogg Blvd., St. Paul, MN 55101.



Chicago Tribune Abstracted by Murphy/Jahn

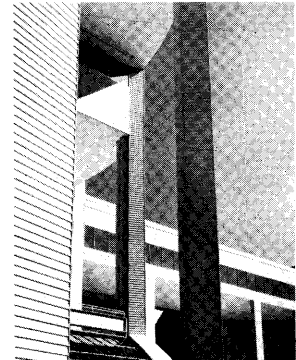
The design for a 31-story office building in New York City by Murphy/Jahn Architects, Chicago, "... represents an abstracted image of architectural history's most ideal tower and base configuration ..." designed by Adolf Loos for the 1922 *Chicago*

Tribune Competition. The design is described as an "... innovative variation on the theme of an 'architectural column'" which conforms to the height and setback limitations and the variable floor sizes required by the program. ■

Reynolds Metal Company

A unique application of residential aluminum siding was used on the General Foods Corporation headquarters in Rye, N.Y. which has won the 1985 R.S. Reynolds Memorial Award for distinguished architecture using aluminum. The building, which contains 260,000 square feet of aluminum siding, was designed by architect Kevin Roche of Kevin Roche John

Dinkeloo and Associates of New York and Connecticut. The winner of the award, sponsored by Reynolds Metal Company and administered by the American Institute of Architects, receives a \$25,000 honorarium and an original aluminum sculpture. ■



Call An Advertiser First

Advertisers Directory

Allied Companies	5	Kohler	33
Allied Glass Products	40	Masonite Corporation	C-3
The Art Store	30	Marquart Concrete Block	35
CPMC	42	Moeckly Fabrications Company	30
David Bear	30	Nebraska Builders Products Company	C-3
Diamond Vogel Paints	6	O'Harco Hi/Co.	40
Color Inc.	5	Onthank Company	31
Gerkin Company	36	Pella Products	36
Gibbs Cook	37	Service Photoprint	7
Hawkeye Capital Bank and Trust	32	Sioux City Brick and Tile	2
Hawkins Greenhouse	7	Stetson Building Products, Inc.	1 and C-3
Holtz/Wilson Design, Inc.	38	Sunderland Brothers Company	31
International Market Square	8	Swanson Gentleman, Inc.	C-4
Iowa Power	4	Thompson Recruiting	32
Johnson Specialty Co.	4	United Brick and Tile	2



**Construction
Products
Manufacturers
Council, Inc.**

**Iowa
Chapter**

STATEMENT OF PURPOSE

The Construction Products Manufacturers Council, Inc. is an association of building product manufacturers and related industry organizations whose primary purpose is to further the business interests of its members and to promote the common interest of quality construction within the industry and to the public.


This purpose is fulfilled by:

- Provision of regular forums enabling its members to exchange current industry and technological information, and business marketing and managerial data.
- Communicating emerging technology and product innovations to encourage quality construction.
- Distribution of product information to key specifiers, buyers and users in national and local marketing areas.
- Maintaining a liason, and serving as an information resource to government on a national, state and local level.

Save the clouds.

I want to help. Enclosed is my tax-deductible check for \$ _____
Please send me information about protecting the eyesight
of myself and my family.

Name _____
Address _____
City _____ State _____ Zip _____

 **National Society to Prevent Blindness**
Iowa Society to Prevent Blindness
320 Shops Building • Des Moines, Iowa 50309

When you lose
You lose the sunsets. The seashells. The moonlight
and snowflakes.
This year 2000 Americans will lose all that
and more forever.
Yet with your help, half of all blindness can be prevented.
With the National Society to Prevent Blindness.
We fight to save all the things people lose when they
lose their sight.
Help us save sight.
Give to Prevent Blindness.