

# IOWA ARCHITECT

Official publication of  
IOWA CHAPTER

AMERICAN INSTITUTE OF ARCHITECTS

AMERICAN INSTITUTE  
OF  
ARCHITECTS

OCT 21 1959



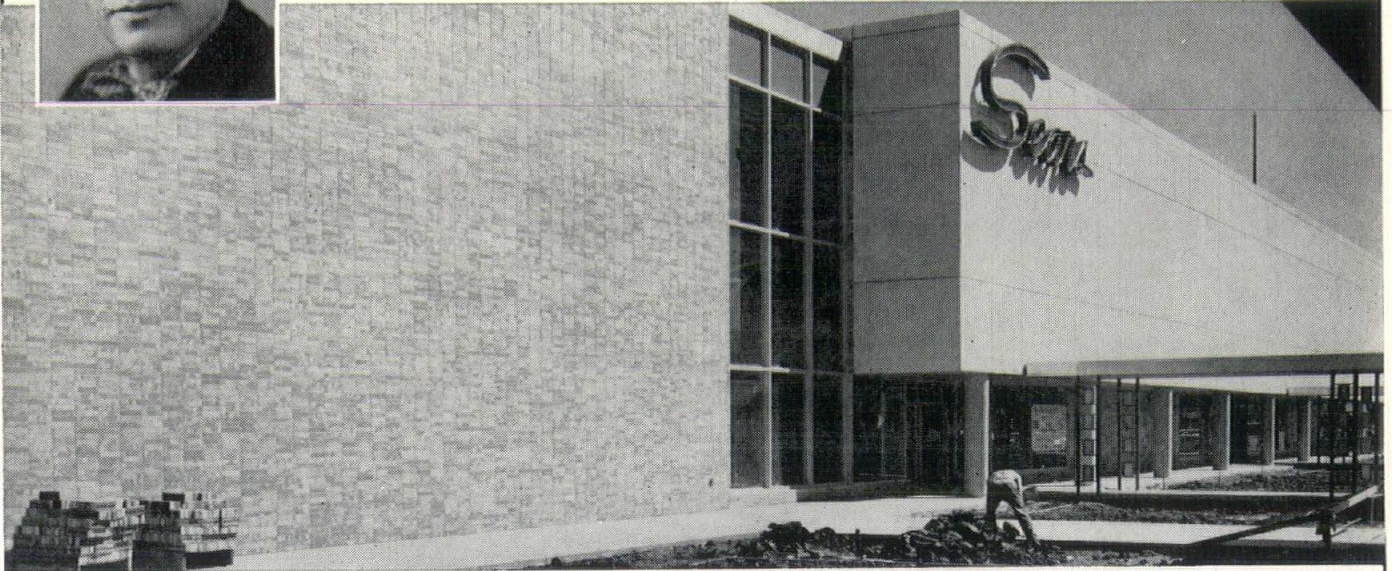
SEPTEMBER - OCTOBER      VOLUME VI      NO. 5      1959





**"FROSTY WIRE-CUT NORMANS  
LAID UP QUICKLY AND ECONOMICALLY"**

— SI WINBERG • WM. KNUDSON & SONS



*Sears Store in Merle Hay  
Plaza, Des Moines, Iowa  
Wm. Knudson & Sons,  
General Contractor.  
Dittrich & Gibson,  
Architects  
Brick supplied by  
Des Moines Brick and  
Supply Company*

**SOME RECENT FROSTY WIRE-CUT JOBS**

- MERCY HOSPITAL, Des Moines, Iowa**  
Brooks Borg, Architect  
Wm. Knudson, Contractor
- Y.M.C.A., Des Moines, Iowa**  
Wetherell & Harrison, Architects  
The Weitz Company, Contractor
- SCHOOL JOB, Algona, Iowa**  
Tinsley, Higgins & Lighter, Architects  
Sande Construction Company, Contractor
- DAY COUNTY HOSPITAL, Webster, South Dakota**  
H. Spitznagel, Architect  
Sioux Falls Construction Company, Contractor
- ZION LUTHERAN CHURCH, Alexandria, Minnesota**  
Armstrong & Schlichting, Architects  
Hurley Construction Company, Contractor
- FISHER COMMUNITY BUILDING, Marshalltown, Iowa**  
Crites & Peiffer, Architects  
Gethmann Construction Company, Contractor
- REGINA CATHOLIC HIGH SCHOOL, Iowa City, Iowa**  
Architects Associated, Architects  
Frantz Construction Company, Contractor
- BURGE HALL, GIRLS' DORMITORY, Iowa University,  
Iowa City, Iowa**  
Charles Alfillisch, Architect  
Klinger Construction Company, Contractor
- MAYFLOWER CONGREGATIONAL CHURCH, Minneapolis, Minnesota**  
Brandhorst & Leadholm, Architects  
Dean L. Witcher, Contractor

**"Our masonry foreman reported that the Frosty Wire-Cut Normans used for the Sears job were of such good quality that the masons were able to lay stack bond with complete ease and obtained a production of up to 1,000 brick equivalent per man per day."**

**This statement from Si Winberg gives one of the reasons why Frosty Wire-Cut from Des Moines Clay Company are preferred by contractors. Architects appreciate their fresh and imaginative effect as well as the availability of custom color ranges.**

**Call or write for complete information and sample panel.**

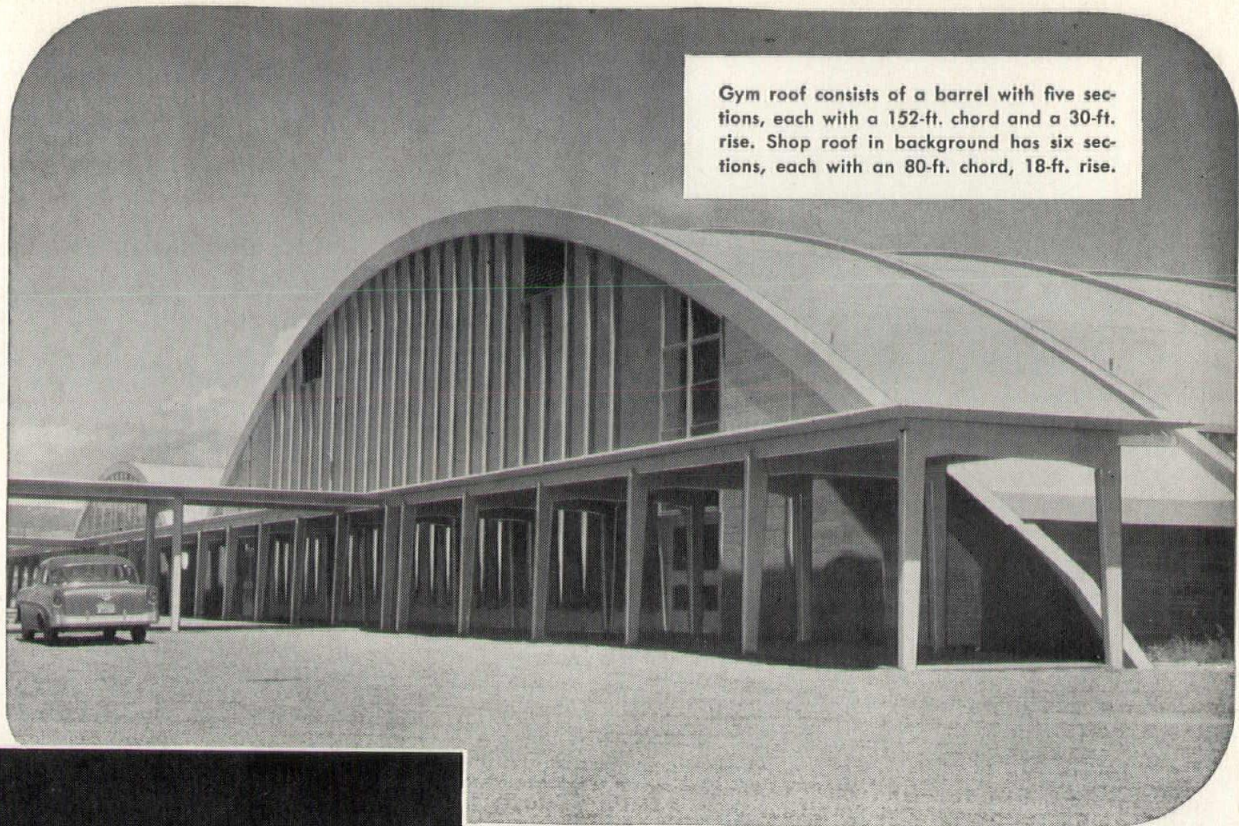
**GOODWIN COMPANIES**

**ENGINEERING & PROMOTION OFFICES**

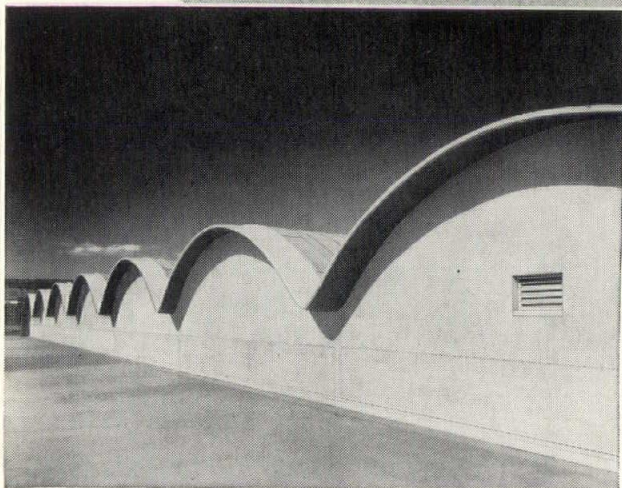
614 Central National Bldg. 513 Foshay Tower  
Des Moines, Iowa Minneapolis, Minnesota  
Phone AT 8-3387 Phone FE 6-6788



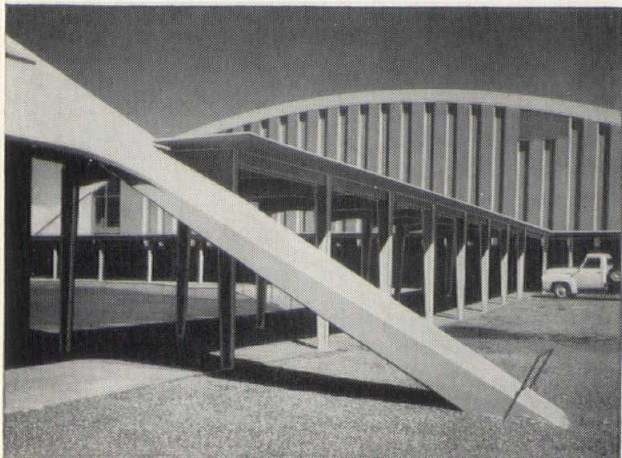
DES MOINES CLAY COMPANY  
MASON CITY BRICK AND TILE COMPANY  
OTTUMWA BRICK AND TILE COMPANY  
OSKALOOSA CLAY PRODUCTS COMPANY  
REDFIELD BRICK AND TILE COMPANY



Gym roof consists of a barrel with five sections, each with a 152-ft. chord and a 30-ft. rise. Shop roof in background has six sections, each with an 80-ft. chord, 18-ft. rise.



The roof of the multi-purpose building, above, consists of seven 60-ft.-long barrels, each with a 32-ft. chord and 23-ft. radius. Photo below shows the type of covered walks (pre-cast concrete bents) used on the campus. The architect was Maloney & Whitney, Yakima, Wash. The structural engineer was Worthington & Skilling, Seattle. The contractor was Wall, Bartram & Sanford, Wood Village, Troutdale, Oregon.



## CONCRETE SHELL ROOFS answer school's need for unobstructed floor areas

The Ellensburg High School, Ellensburg, Wash., demonstrates the versatility of concrete shell roofs for educational structures. Large unobstructed floor areas were required for three types of buildings: the gymnasium, the shop building and a multi-purpose building. Concrete barrel shell roofs were chosen for all three.

Shell roof construction provided the unobstructed floor area required. It was economical to build and opened unusual design opportunities to the architects.

More and more architects and engineers are turning to concrete shell roofs for structures requiring open floor areas. Roofs with spans up to 300 feet and more can be built without any interior columns. In addition to school buildings such as shown here, concrete shell roofs are ideal for auditoriums, exhibition pavilions, hangars, field houses, train sheds, repair shops for large equipment, garages and warehouses.

Concrete shell roofs offer additional advantages of low maintenance cost, long life, low insurance rates and **low-annual-cost** service. Send for free illustrated booklets. Its distribution limited to the U.S. and Canada.

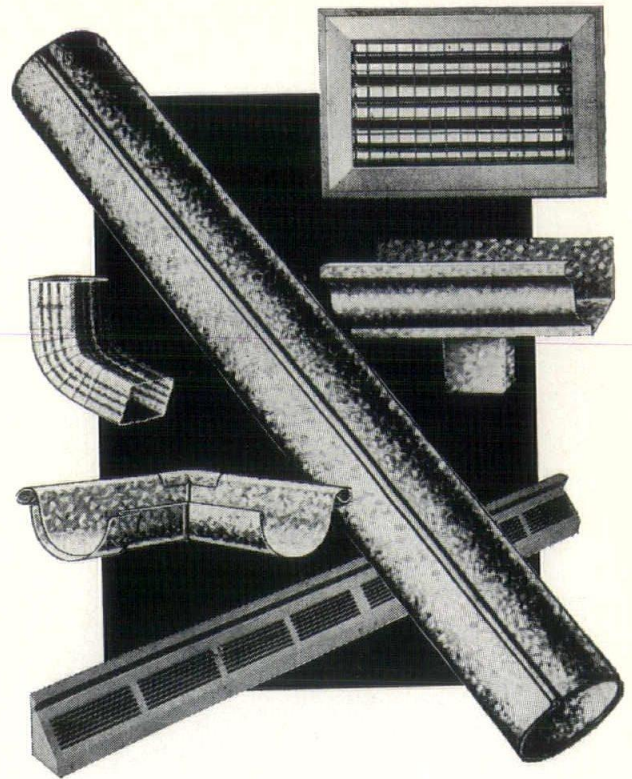
### PORTLAND CEMENT ASSOCIATION

408 Hubbell Building, Des Moines 9, Iowa

A national organization to improve and extend the uses of portland cement and concrete . . . through scientific research and engineering field work

Q. What's the tightest-bonding and fastest-drying primer for things like these? →

A. "GALVA-BOND", the new base coat that bites into metals and never lets go!



● GALVA-BOND ANCHORS TO ALL THESE METALS:

Galvanized — Aluminum — Magnesium — White Metal — Tin Plate — Terne Plate — Zinc — Copper — Brass — Steel. It is the perfect base coat for unpainted downspouts, flashings, gutters, metal roofs, metal farm buildings, silos, pipes and metal surfaces in industrial plants.

● GALVA-BOND ETCHES AND PRIMES IN A SINGLE COAT!

Prior to its quickly drying to a tough, hard film, Galva-Bond imparts a deep-etch chemical pre-treatment to the metal on which it has been applied. This 'bite-in' action assures secure anchoring and provides maximum stability for subsequent coatings.

● GALVA-BOND CAN SAVE YOU UP TO TWO DAYS TIME!

This new, highly-perfected priming material can be re-coated after only two hours drying time. Compare this with the 36 to 48 hours which most other satisfactory metal primers require. Available only in white. Can be brushed or sprayed. Thins with shellac alcohol.



**Retain this page for your material reference files.**

*Please contact us if further information is desired. No obligation, of course.*

**IOWA PAINT MANUFACTURING CO., INC.**

General Offices, 118 Eighth St., Des Moines, Ia., Phone AT 3-1501

# IOWA ARCHITECT

*Iowa Chapter, American Institute of Architects*

## CONTENTS

### OFFICERS

George Horner  
Iowa City  
*President*

Eugene O'Neil  
Des Moines  
*Vice-President*

Dave Frevert  
Des Moines  
*Secretary*

Doug Robison  
Davenport  
*Treasurer*

### PUBLICATIONS COMMITTEE

Harold J. Bullington  
*Chairman*  
James A. Lynch  
Thomas J. Atherton

### EDITOR

Harold J. Bullington  
202 Masonic Temple Bldg.  
Des Moines 9, Iowa

### MANAGING EDITOR

Robert F. Bonomi  
422 Securities Bldg.  
Des Moines 9, Iowa  
ATlantic 2-4309

Welcome, Neighbors!.....	6
A display of competence.....	6
Those commercial exhibits.....	6
The Mind of a Designer.....	7
On the Rostrum.....	8
For the Ladies.....	8
Regional schedule.....	9
The contemporary generation.....	12
Designed by Iowa Architects.....	15
Notes from Iowa State.....	18
Personal and Professional.....	18

The "Iowa Architect" is published bi-monthly for the Iowa Chapter, American Institute of Architects, and mailed without charge. Appearance of names and pictures of products or services in editorial or advertising copy does not constitute endorsement of either the A.I.A. or this chapter.

### THE COVER

*St. Timothy's Methodist Church, Cedar Falls, Iowa. Photo of model. Bid for 1960 completion. Architects: Ralston & Lorenzen, Waterloo. See page 16.*

## A display of competence

An unusual chance to demonstrate the quality of architectural design currently being done in Iowa is offered by the upcoming convention of the Iowa Association of School Boards.

There are literally thousands of school board members in Iowa. Many of them are, or soon will be, personally concerned with a building program. They have almost no opportunity to become acquainted with the many sound, thoughtful, imaginative answers to school design problems which are currently being developed in offices of Iowa members of the A.I.A. Those who can afford the time and money to tour new projects are confronted with a problem of selection; they are lucky if they gain more than a smattering of hasty impressions for their pains.

The school boards association is interested in giving its members an opportunity to see a wide variety of approaches to present-day school housing needs. Its executive, Don Foster, has offered to hang the architectural displays in the area where *general* sessions will be held; where almost everyone attending will be likely to see them. (See page 19.)

Here is a chance for the Iowa Chapter to show the kind of work of which its members are capable. It should exhibit a broad range of projects and style, the work of men of competence and vision.

This display will speak for the worth of the profession in Iowa. Its size and scope will be a measure of our stature.

## Welcome, Neighbors!

The Iowa Chapter, A.I.A., is happy to play host to its colleagues from five other chapters in the Central States district.

We have done our best to put together a program which will make your trip worthwhile. The contribution of architects to education, and vice-versa, is a matter of significance to us all, present and future, and we look forward to the airing of various philosophies about it.

We have sprinkled the schedule liberally with social events, for while we like the stimulation of visiting minds we also enjoy sociability with visiting personalities.

The feeling that gray matter and good humor are likely to inhabit the same body, among our colleagues, is among the factors which led many of us into the profession of architecture in the first place. Subsequent years have proved the feeling more frequently right than mistaken.

For our part, then, it is always a pleasure to get together. We hope you enjoy your stay here as much as we enjoy having you.

## Those commercial exhibits:

Persons attending the Regional Conference will notice a group of relatively austere messages from suppliers of architectural goods and services, on the big new mezzanine of the Hotel Savery.

This simplicity has purpose.

Iowa Chapter committees felt that in other years and in other cities, a commendable spirit of competition had led our good friends and business associates into some mighty expensive presentations of the relative merits of their goods and services. (A creditable convention booth, freight, setting-up, taking-down and taking-care-of during the meeting can easily develop a four-figure price tag.) Such outlay, the committee strongly felt, was out of proportion.

Exhibits at this meeting were therefore limited to a card 30 inches wide and 40 inches high, with about 12 inches of table space in front of the card for display of literature or products. For the privilege of using this space, the exhibitor pays the Chapter \$100 (all such fees go to the convention "kitty.") There is no additional fee to the hotel. For a registration

fee of \$25, the exhibitor may send a representative to mingle with the convention-goers and make the acquaintance of present and future customers. Firms may send cards but no representatives, and vice-versa, as they prefer.

This information was transmitted to a group of prospective exhibitors, with the plain statement that while we would welcome them if they cared to attend, they were under no obligation of any kind to do so. Only one contact was made by the chapter to the list of prospects.

The exhibitors who are making an appearance, therefore, are doing so because they think it is a good idea. Some were delighted at the chance to thus reach architects from a five-state area; others prefer to use different means. This is a matter for their judgment, not ours.

We do welcome those who decided to meet with the Regional. We tried to make it easy for them to get to know us, and we hope every one benefits from improved acquaintance.



GARRETT ECKBO



PHILIP WILL, JR.



RAYMOND S. KASTENDIECK



C. C. BYERS

## The Mind of a Designer

Completion of the 1959 Regional Conference program brings together a cohesive group of speakers representative of the convention theme: "*Education: the architect's perpetual challenge.*"

Touching on the construction of educational buildings, the formation of the mind of a designer, and providing penetrating glances into phases of architecture that often are overlooked, the program promises interesting activities from the pre-conference meetings Wednesday until the completion of the business sessions on Saturday.

Six of the seven architectural schools in the district are having students compete in the competition sponsored by the Structural Clay Products Institute. Prizes in this competition will amount to \$500 and the winners will be named at the annual banquet Friday, October 9. Competing students are from University of Oklahoma, University of Kansas, Oklahoma State University, Iowa State University, University of Nebraska, and Washington University at St. Louis.

Pictured on this page are speakers who have accepted invitations to participate in this 1959 meeting of Architects from Kansas, Nebraska, Missouri,

Oklahoma and Iowa. Few of these speakers need an introduction to the architects of the region. The few who are yet unknown are certain to contribute greatly to the enjoyment and effectiveness of the program.

Iowa Chapter President George Horner has announced that the Iowa Chapter will present, as a door prize at the banquet, a pair of game tickets plus a pair of round-trip tickets on the Des Moines-Iowa City football special for the Iowa-Michigan State football game to be played at Iowa City, October 10. The game is Homecoming for Iowa.

Throughout this issue, readers will find information about the conference, the speakers, the program, and the events for ladies.

Chairman Charles Silletto, in announcing completion of the program said:

"We believe that interesting, valuable presentations are being provided in addition to a social and entertainment schedule that will give every architect attending a chance to profit professionally from the conference, see that Central States District business is conducted and enjoy the company of a host of his professional peers for three days."

WALTER McQUADE



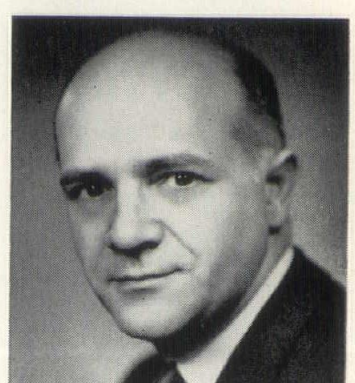
JUDGE BERNARD TOMSON



ALAN LAING



DR. JOHN H. HARRIS



## Garrett Eckbo

Los Angeles

Garrett Eckbo brings a wealth of experience and a recognized talent to the 1959 Conference. He is author of "Landscape for Living" and "The Art of Home Landscaping," as well as many magazine articles which have appeared in publications in the U. S., England, Canada and France. He has served as a faculty member of the School of Architecture, University of Southern California and as visiting critic at Louisiana State University, North Carolina State University, Harvard University, University of Pennsylvania, University of Washington, and the University of Utah. He received his B.S. in Landscape Design at the University of California in 1935 and M.L.A. at Harvard University in 1938. He was chairman of the Eighth International Design Conference at Aspen, Colorado, in 1958, the same year he was designer for the 6th All City Outdoor Art Festival at Los Angeles.

## Philip Will, Jr.

Vice President, The Institute

Widely known among architects, Philip Will, Jr., Chicago, is First Vice President of the American Institute of Architects. Born in Rochester, N. Y., he was graduated from Cornell University in 1928 and earned a Bachelor of Architecture degree there in 1930. Registered to practice in 19 states, he is partner-in-charge-of-design in the firm of Perkins & Will, Chicago, and White Plains. During his tenure, the firm has won 11 national awards or medals and 20 citations of merit. Mr. Will was elevated to fellowship in the A.I.A. in 1951 for design.

## Raymond D. Kastendieck

Treasurer, The Institute

Raymond S. Kasendieck, Gary Indiana, Treasurer of the American Institute of Architects, will deliver the keynote address. A native of Missouri, he earned a Bachelor of Architecture degree at Washington University in St. Louis. After 10 years with Wm. B. Ittner of St. Louis, he established his own firm in 1933 in Gary. He has been president of the Indiana Society of Architects (two terms) and was for three years A.I.A. regional director for the Great Lakes district.

## Dr. C. C. Byers

Cleveland

Dr. C. C. Byers, former Superintendent of Schools at Parma, Ohio, came by his education on architecture and schools from the client's side, having helped direct more than \$16,000,000 in new school construction. Now a widely heard inspirational speaker he is appearing in Youngstown, O.; Atlantic City, N. J.; Philadelphia, Pa.; Toronto, Canada; Erie, Pa.; Pittsburgh, Pa.; Dayton, O.; and Milwaukee, Wis., before coming to Des Moines for the A.I.A. Regional. Known as a speaker with the "light touch," Dr. Byers, who is appearing as a courtesy of the General Motors Corporation, is certain to provide all attending with an interesting look at the present and future of America with his "New Horizons in Living."

*More, pages 20, 22*

## For the ladies

*A hospitality room, for coffee, cards and conversation, will be open on the mezzanine at all times except during scheduled events.*

### THURSDAY, OCTOBER 8

- 12:00 Noon WELCOME LUNCHEON, Ballroom
- 2:00 P.M. *Touring Russia: Don Soliday, KRNT-TV*  
Des Moines Room
- 6:00 Buffet, Terrace Room
- 8:00 Bus to Theatre (East Door, Hotel)
- 8:30 Curtain Time  
*"The Happiest Millionaire"*  
Des Moines Community Theatre

### FRIDAY, OCTOBER 9

- 11:30 A.M. Bus to Wakonda Country Club  
Luncheon  
*"Your Past Is Showing"*  
Mrs. Martha Barclay, Mason City
- 3:30 Bus returns to hotel
- 6:30 Hospitality, Des Moines Room
- 7:30 Dinner, Grand Ballroom
- 10:00 Dancing, Ballroom



Don Soliday



Mrs. Barclay

Don Soliday has been with KRNT-TV and KRNT for eight years and rates among the station's top newscasters and broadcast journalists. His own wide interests are exemplified in his daily television program, a live 45-minute presentation. Following a month-long tour of Europe, including several days in Russia, Don has been presenting interesting talks and film descriptions of foreign lands. Before joining the KRNT staff, Don was a newscaster at Shenandoah, Iowa, and formerly was news director of a station in Kentucky. He has pioneered such complex programs as "Nite-Beat" on KRNT.

Mrs. Martha Barclay discusses the ways you can discover the clues to another person's past and personality from his face, his voice and gestures. This art, often used by fortune tellers to draw information from their subjects, is taught to dramatic art students because an actor's workshop is the study and imitation of people. Mrs. Barclay is a graduate, cum laude in drama, of Northwestern University and received her Master's degree at the State University of Iowa. She has written for radio and TV in Iowa, Nebraska, Texas and Oklahoma.



# Education: the architect's perpetual challenge

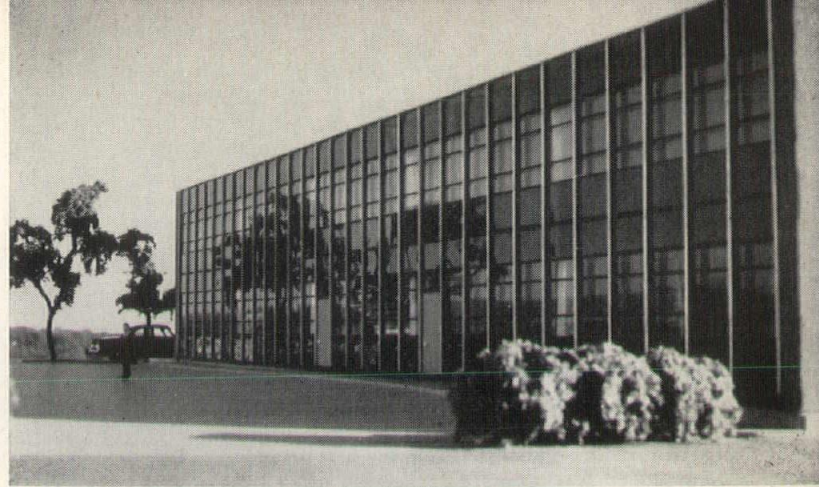
WEDNESDAY, OCTOBER 7

Hospitality Room, Hotel Savery, open for early arrivals.

THURSDAY, OCTOBER 8

- 8:00 A.M. Registration, Mezzanine
- 9:00 Regional Committee Meetings  
Mezzanine Floor rooms
- 10:00 Regional Council Meeting, Terrace Room  
Presiding: I. Lloyd Roark,  
Regional Director, A.I.A.  
Open to all A.I.A. members
- 12:00 Noon WELCOME LUNCHEON  
Grand Ballroom  
Presiding: George L. Horner, A.I.A.  
President, Iowa Chapter  
*Welcome Address:*  
The Hon. Herschel C. Loveless  
Governor of Iowa
- 1:30 P.M. KEYNOTE SESSION  
Terrace Room  
Presiding: George L. Horner, A.I.A.  
*Address:* Raymond S. Kastendieck, A.I.A.  
Treasurer, The American Institute of  
Architects
- 2:30 *"Some Observations on School Design"*  
Walter McQuade,  
Associate Editor, *Architectural Forum*  
Presiding: N. Clifford Prall, A.I.A.
- 3:30 Coffee Break
- 3:45 *"Gab and Gripes on Chapter Affairs"*  
Presiding, Oswald H. Thorson, A.I.A.  
Member, Chapter Affairs Committee,  
A.I.A.
- 6:00 Buffet Supper, Terrace Room
- 8:00 Bus Transportation to Theatre  
(East Side of Hotel)
- 8:30 Curtain Time  
*"The Happiest Millionaire"*  
Des Moines Community Theatre

NOTE: Individual tours of Des Moines will be arranged by Iowa Chapter members for anyone wishing to visit points of interest Thursday morning or Saturday morning.



TRUSCON Intermediate  
Projected Windows used in  
curtain wall, supercoated.  
Hawley Welfare Building

Hawley Welfare Building,  
700 Sixth Avenue, Des Moines, Iowa

AMOS EMERY & ASSOCIATES, Architects

GARMER & STILES CO., Contractors

**Z E I N E R**

CONSTRUCTION SERVICE, INC.

Route 3, Des Moines 15

AT 2-0910

*Adel  
Clay  
Products  
Co.*

WE CAN FURNISH ALL  
YOUR BRICK AND  
TILE REQUIREMENTS  
FROM EITHER OF  
OUR TWO FACTORIES,  
OR FROM JOBBER  
LINES IN MOST  
TERRITORIES.

*Adel Clay Products Co.*

Sales Office  
101 ASHWORTH ROAD WEST DES MOINES, IOWA  
CR 9-9721

## DESCO VITRO GLAZE

(Enameled Cement)

## TERRAZZO CERAMIC TILE

For Information, Write or Phone:

### Sioux City Mosaic Co., Inc.

WEST FIRST AND REBECCA STREETS

5-5653

SIOUX CITY 3, IOWA

Established 1920

Member of

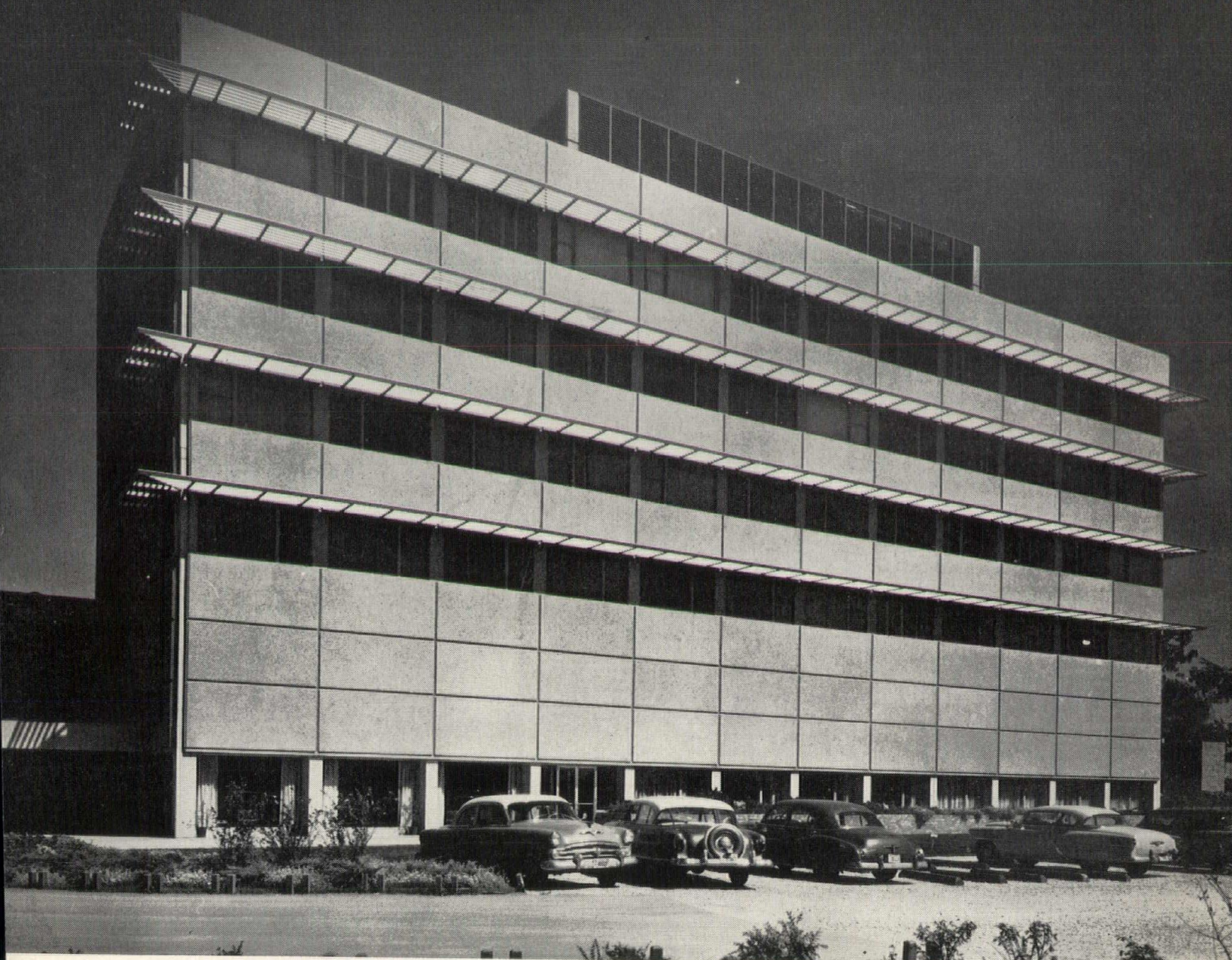
National Terrazzo and Mosaic Ass'n.  
Desco Vitro Glaze Ass'n. of America  
Northwest Terrazzo Ass'n.

### FRIDAY, OCTOBER 9

- 8:00 A.M. Registration, Mezzanine
- 9:30 "ANALYZING THE ARCHITECT"  
Terrace Room  
*"The Young, Formative Years"*  
Dr. John H. Harris, Superintendent  
Des Moines Public Schools  
*"His Higher Education Years"*  
Prof. Alan Laing, A.I.A.  
Chairman, Dept. of Architecture  
University of Illinois  
*"His Later, Working Years"*  
Philip Will, Jr., A.I.A.  
Vice-President, A.I.A.  
Principal, Perkins and Will  
Presiding: Prof. Leonard Wolf, A.I.A.  
Head, Department of Architecture  
and Architectural Engineering  
Iowa State University, Ames
- 11:30 Bus departs for Art Center
- 12:00 Noon Luncheon, Art Center
- 1:30 P.M. *Commentary*: Garrett Eckbo,  
Landscape Architect  
Eckbo, Dean & Williams, Los Angeles  
Art Center Auditorium  
Presiding: James A. Lynch, A.I.A.
- 2:30 Bus returns to Hotel Savery
- 3:00 *"It is the Law"*  
Judge Bernard Tomson  
Nassau County District Court, N. Y.  
Terrace Room  
Presiding: Eugene O'Neil, A.I.A.
- 4:00 A.I.A. Regional Business Meeting  
Presiding: I. Lloyd Roark, A.I.A.  
Terrace Room
- 6:30 Hospitality, Des Moines Room
- 7:30 Dinner, Terrace Room  
Presiding: George L. Horner, A.I.A.  
President, Iowa Chapter  
*"New Horizons for Living"*  
Dr. C. C. Byers  
Cleveland, Ohio
- 10:00 Dancing, Grand Ballroom  
Bill Bales and his Blue Notes

### SATURDAY, OCTOBER 10

- 9:30 A.M. Regional Business Meeting  
Des Moines Room  
Presiding: I. Lloyd Roark, A.I.A.  
W. L. Parish, A.I.A.

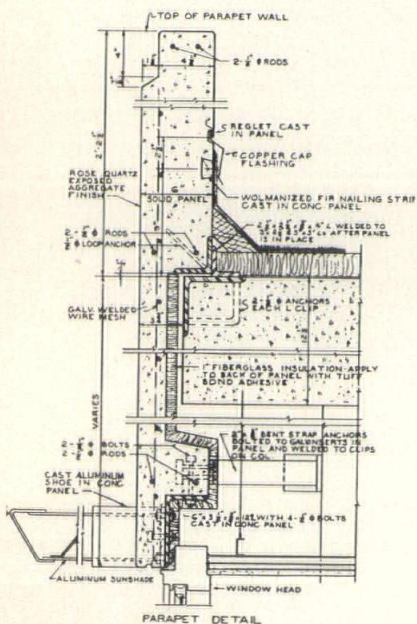


MERCY HOSPITAL • DES MOINES

BROOKS - BORG • ARCHITECTS

*See exposed aggregate panels being cast.*

A field trip to the panel plant is planned for architects Saturday, October 10, at 9:30 a.m., following the Regional Conference, A.I.A. Information will be available at the convention registration desk.



MIDWEST CONCRETE INDUSTRIES  
WEST DES MOINES

# the contemporary generation

*O. H. Thorson  
(with son, Thor)*



WHEN O. H. Thorson was introduced to the American Institute of Architects, his surname was no stranger to that body. The introduction was made by his father, Thorwald Thorson, who has been a member thirty years and whose firm has put Forest City, Iowa (pop. 2766), where it is resident, firmly on the architectural map.

The younger Thorson has become equally well known among his own generation, both for his design and his professional activities. While his work contains a good deal more intrinsic dignity than is suggested by his nickname, "Oz," he unmistakably speaks the language of the contemporary generation in architecture.

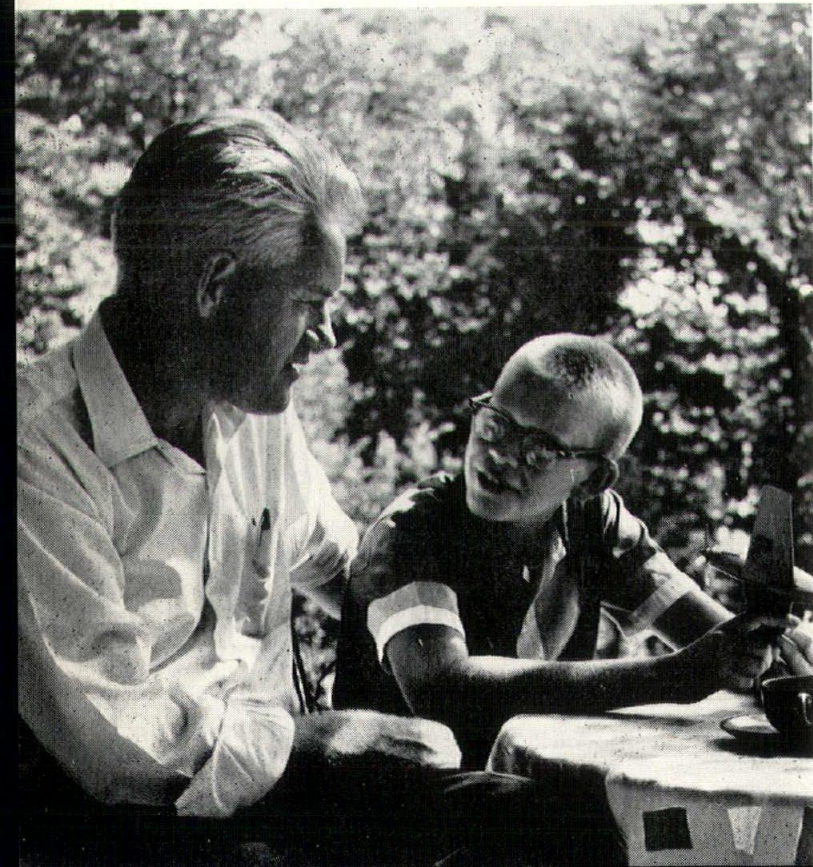
Demonstrating his interest in the profession as a whole, Thorson has been active in numerous committees of the Iowa Chapter, including the executive committee.

For two years, 1953 and 1954, he was president of the chapter.

In 1957 he was named a member of the A.I.A. chapter affairs committee, representing the Central States District. He currently holds this post.

Since 1957 he has been a member of the Iowa Board of Architectural Examiners, usually writing the examinations for site planning and professional administration.

*The executive committee of the Iowa Chapter is proposing Thorson for nomination as a director of the A.I.A., representing the Central States district. The three-year term begins in 1960. The nominee*



will be chosen at the Regional conference in Des Moines October 8, 9 and 10.

Born in Forest City in 1912, O. H. Thorson almost literally grew up in his father's office. He attended junior college and studied for ten quarters at the Minnesota School of Architecture, earning a five-year Bachelor of Architecture degree in 1937.

He entered his father's practice, remaining four years. In 1942 he worked with Madigan - Hyland, Long Island City, on the Roosevelt Roads naval base job, and went to Ottumwa, Iowa, to work on plans for the wartime naval base there. The following year he entered the U.S. Army, designing and supervising construction for the Post Engineer. For 21 months he was attached to Division II NDRC, stationed at Princeton University, in England and France and at the Pentagon (Joint Target Group), working on bomb damage analysis and the efficiency of bombing.

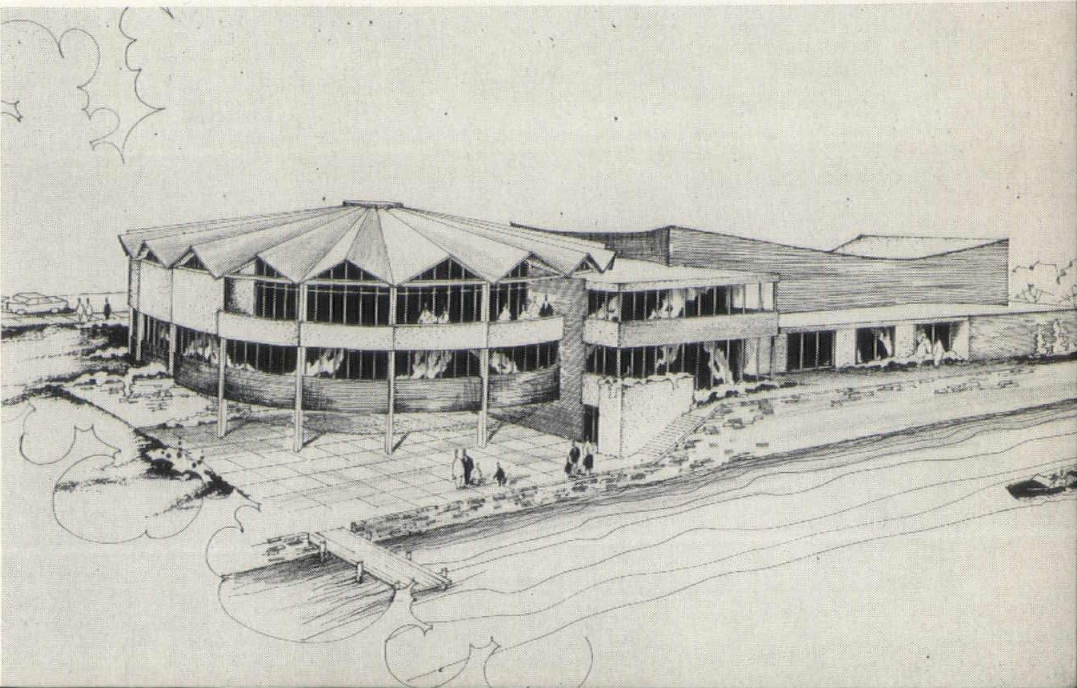
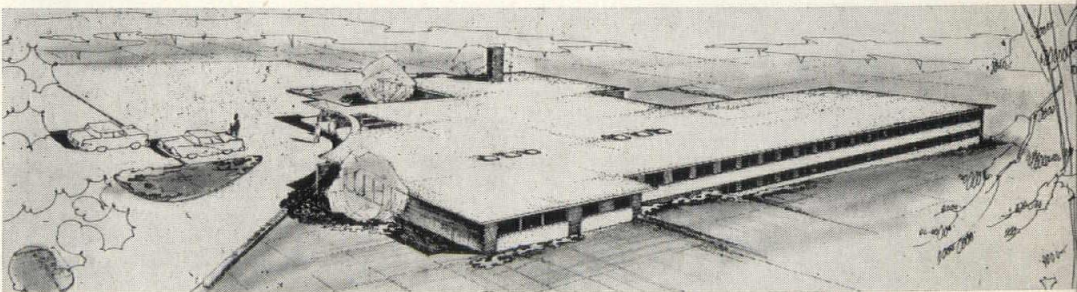
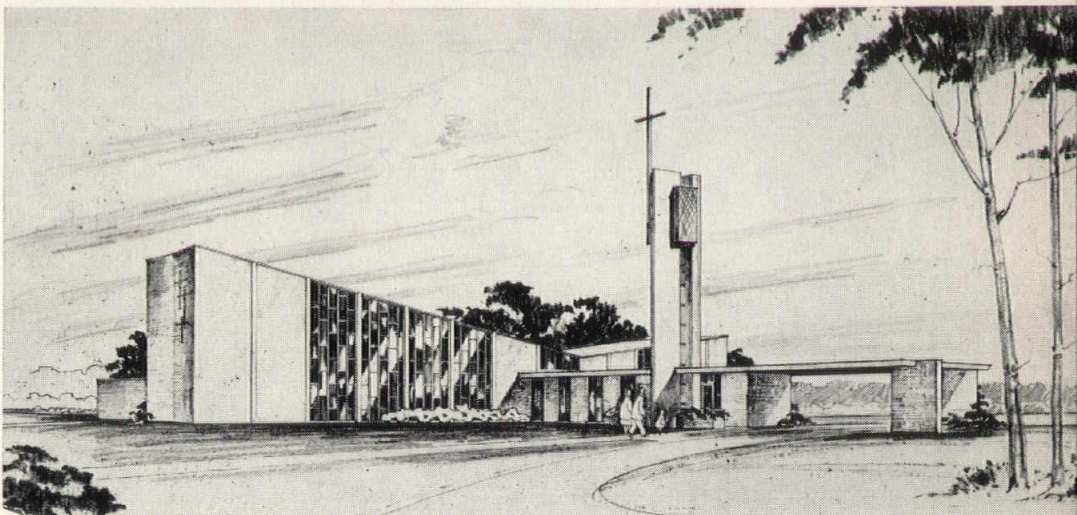
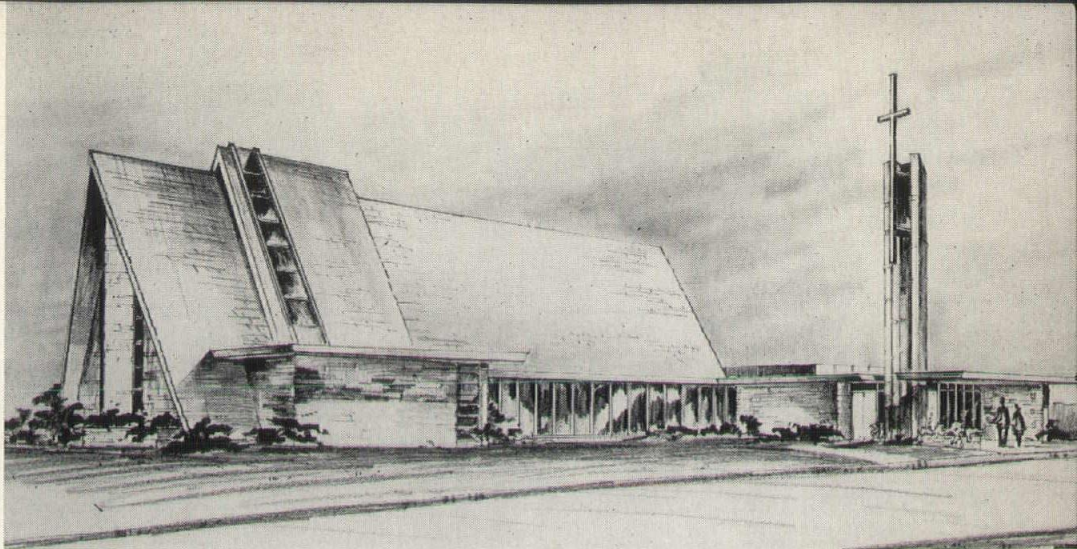
Following the war, the Thorsons established a partnership, and opened a new office in Waterloo under personal supervision of the younger member.

The next decade was a busy and productive one for the firm; Oz finally decided that an airplane was the only practical way to travel between projects. In 1956 he purchased a Cessna 172, soloed in eight hours and obtained a private rating in April.

Since then Thorson has flown 35,000 miles a year. His 1959 log includes a flight to the A.I.A. convention in New Orleans, with his wife and son, and his father, as passengers.

Married in 1941, Thorson has a

UPPER LEFT: Zion Lutheran Church, Waterloo, completed 1958, \$180,000. Sculpture by Don Finegan, Iowa State Teachers College faculty, brass and copper strips imbedded in fiberglas. CURRENT PROJECTS, top to bottom: St. Paul's Evangelical and Reformed Church, Keokuk, to be dedicated in September. Nave seats 300; Sunday School accommodates 300. Augustana Lutheran Church, Boone, under construction. Nave to seat 280. \$240,000. Lucas County Memorial Hospital, Chariton, under construction. New 35-bed facility with provision for expansion. \$650,000. Proposed Recreation Center, Waterloo. Bond issue for \$650,000 failed by a few votes.





# *Your Sign of Prompt Service*

SWANSON SALES, INC.

CR 9-9793

2737 DOUGLAS

DES MOINES

Our knowledge and experience of over 25 years in the Floor and Wall Covering Field is at your service. Call on us for solution of your problem jobs.

- Laytex Underlayments
- Asphalt Underlayments
- Vinyl Asbestos & Asphalt
- Homogeneous Vinyl
- Rubber and Cork Tiles
- Bolta-Wall Vinyl Wall Coverings
- Rubber Wall Coverings

**RALPH N. SMITH, Inc.**

Des Moines, Iowa

1339 2nd Ave.

AT 8-6741



*Copper hood over dining-room fireplace in O. H. Thorson home, Waterloo, is design by Joe Bolinsky.*

daughter, Sigrin, 16, and a son, Thor, 14. Sigrin is in Europe this year, participating in a student exchange program.

In the Thorson's contemporary home in a hillside community in Waterloo, the talents of the owners blend. Mrs. Thorson specialized in interior design in college, and is a potter by avocation. The home also contains numerous mementoes of a seven-week family trip to Europe in 1955, and of an architectural tour of Mexico in 1957.

One of Thorson's neighbors in the 55-acre wooded ridge, developed by 11 families, is Richard Brom, a member of the Thorson firm since 1952. In January, when both Thorson offices re-organized, Brom became O. H. Thorson's partner in a new Waterloo firm. (The previous Forest City partnership was dissolved; partners of the founder, Thorwald Thorson, now are Gordon O. Gjeltten and Willis Schellberg.)

The Waterloo firm of Thorson and Brom has six technical employees. Current work includes five hospital projects, (among them a \$570,000 addition in Monticello), six church projects, two schools and three homes for the aged. The firm is now developing plans for a music education building at Iowa State Teachers College at Cedar Falls, and for several churches. Among its recent work is the \$500,000 Westminster Presbyterian Church, Waterloo, completed in 1958.

An active Lutheran and Rotarian, Thorson enjoys hiking and skiing at a cabin at Arapaho Basin in Colorado. He also likes to read, but comments ruefully, and no doubt accurately, "there hasn't been much time for hobbies."



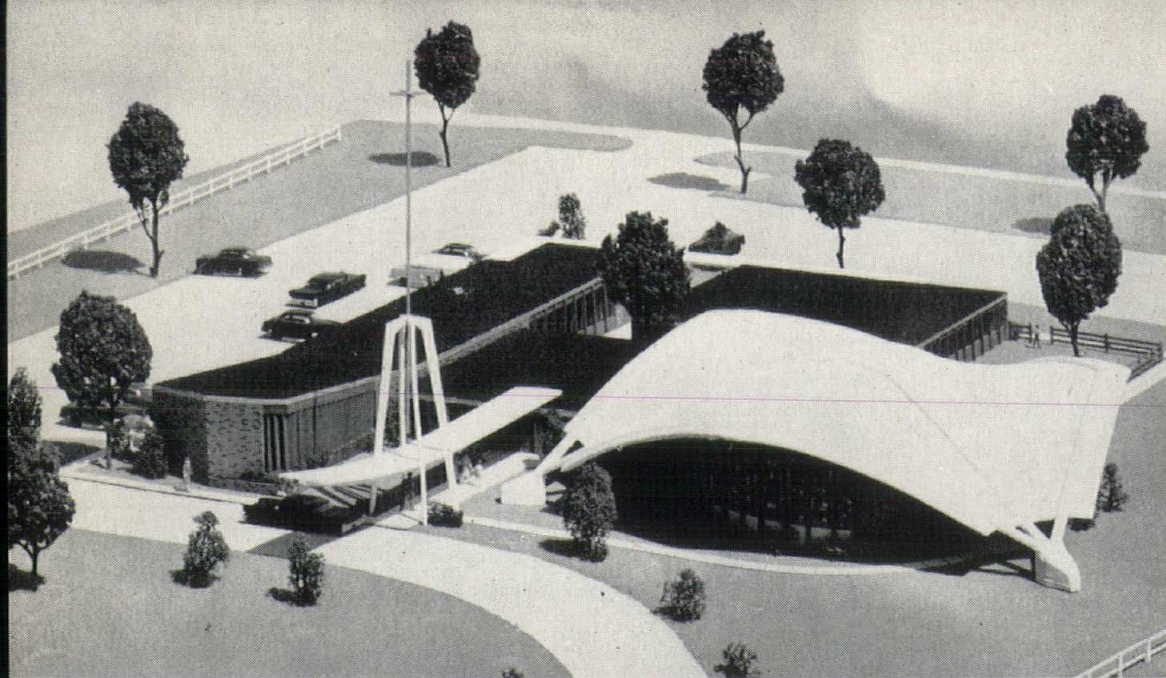
## D E S I G N BY I O W A A R C H I T E C T S

*St. Theresa of the Child Jesus* Catholic Church, Des Moines, seats 1,000 in the central nave and transepts. Main entrance on the south (left, above) gives access to church on upper floor. Secondary entrance on the east. The corner site, at University Avenue and Merle Hay road, slopes away to the west. A large social hall, stage, kitchen and meeting rooms are on the ground floor, with grade entrances from the parking area on the west. In the church, the choir is situated behind the altar, secluded by a woven plastic screen. Greater intensity of light on the front of the screen blocks visibility from the nave, but permits the choir to observe the service. The Rev. Charles Phelan is pastor.

**ARCHITECT:** Gerald I. Griffith, Des Moines.

**CONSTRUCTION:** Steel framing with masonry walls. Transept roofs are of timber. Project contains 429,598 cubic feet. Total cost, \$381,000 (88.7 cents per cubic foot).

**CONTRACTORS:** Garmer and Stiles Co., general; Van Dyck Plumbing and Heating Co.; Capitol City Electric, all of Des Moines.



DESIGN  
BY  
IOWA  
ARCHITECTS

## Three-point thin shell sanctuary

The church on the cover is the first thin-shell dome of its kind under construction in the United States, to the knowledge of its designer, Keith Lorenzen, Waterloo. Technically a hyperbolic paraboloid (its surface combines the geometric curves of a hyperbola and a parabola), it spans about 100 feet, buttress to buttress, with no interior support and with a concrete shell  $3\frac{1}{2}$  inches thick. Since all members are in compression except the underground ties which connect the three points, a minimum of reinforcing steel is required.

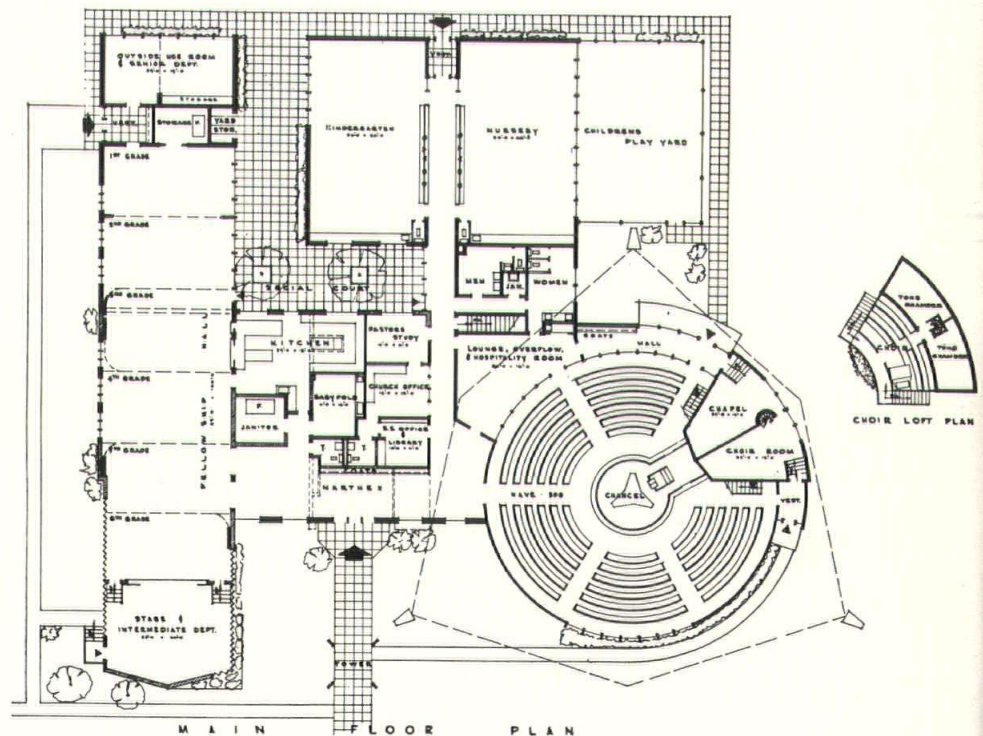
The dome was developed in response to the wish of the building committee of St. Timothy's Methodist Church, Cedar Falls, for a sanctuary in which the congregation would worship in close proximity to the pulpit. In the resulting circular plan, the choir is elevated behind the central pulpit.

Desiring to avoid any exterior impression of a silo or roundhouse, while blending with the semi-contemporary existing structure, the architect designed the low curving three-point dome. The congregation approved the unconventional design, and authorized construction to be completed in 1960.

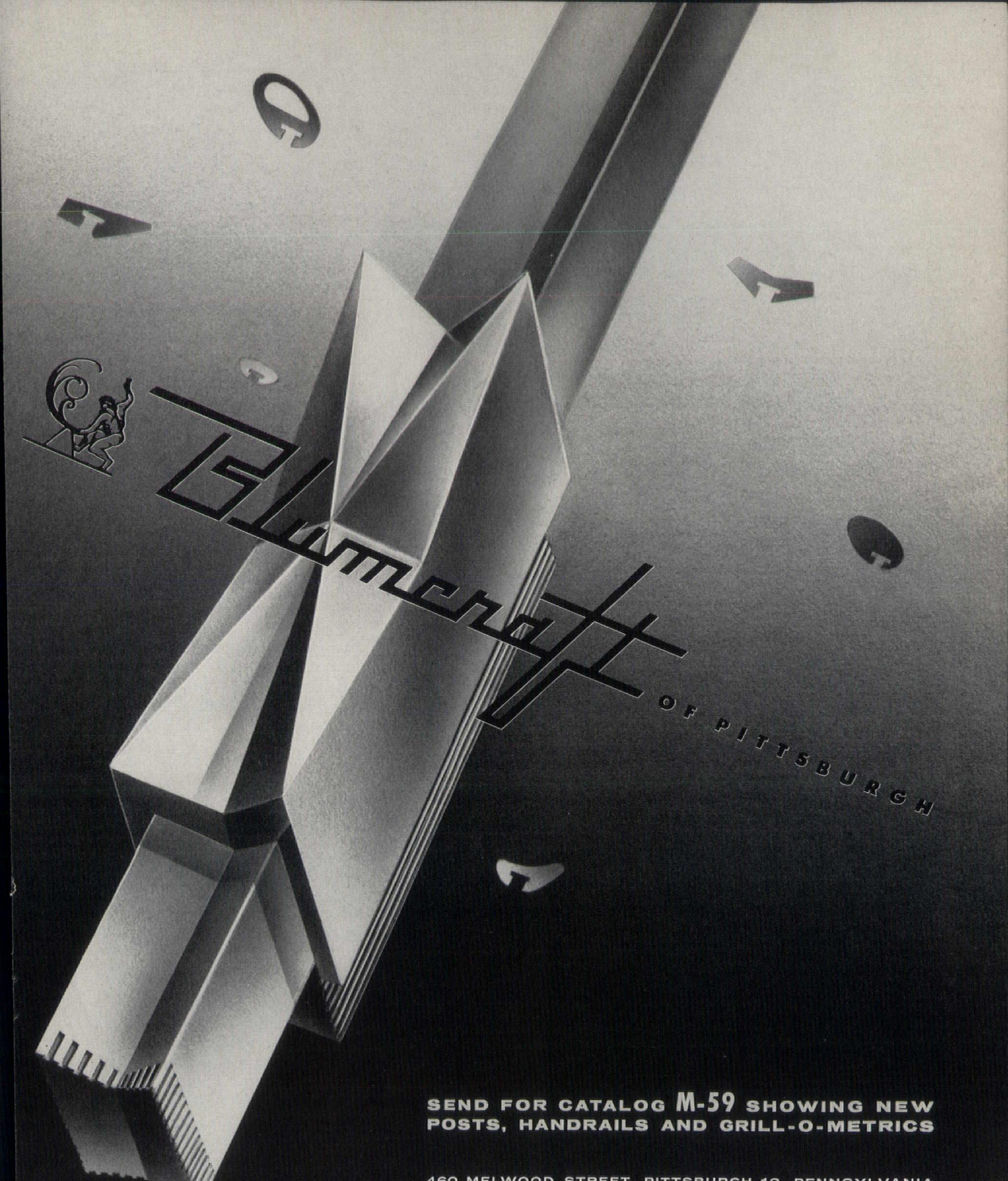
Since this is the first thin-shell project of any type in the Waterloo area, a pre-letting seminar was held at the church in August. All contractors in the area were invited, with estimators, foremen and other appropriate personnel. Har-

old Jobse, district structural engineer with the Portland Cement Association, discussed forming procedure, technique and suggested concrete installation; a representative of Petersen & Appell, Des Moines structural engineers, covered design theory, analysis and construction details.

The existing structure was built in 1953 for a congregation of 300 and Sunday school of 100. The congregation has now nearly doubled. Plant layout is designed for a congregation of 1200, meeting in two worship services, and for a Sunday School of 600.







**Blumcraft**  
OF PITTSBURGH

**SEND FOR CATALOG M-59 SHOWING NEW  
POSTS, HANDRAILS AND GRILL-O-METRICS**

460 MELWOOD STREET, PITTSBURGH 10, PENNSYLVANIA

## NOTES FROM IOWA STATE

Enrollment in architecture at Iowa State University fall quarter will be similar to last year, except that a larger class of new students is anticipated—probably 115 to 120.

A new staff member is Vernon F. Stone, who arrived early in July. He will teach fifth year students in architecture.

A graduate of Washington University, St. Louis, Mo., he was on

the staff there from 1950 to 1952, and has since been in practice in Wichita.

Jim Wilkins and Scot Stouffer are new graduate assistants. They received bachelor of architecture degrees from ISU in June. Wilkins spent the summer in the Brooks-Borg office, Des Moines, and Stouffer was with Crites, Pieffer & McConnell in Cedar Rapids.

Prof. and Mrs. Roscoe O. Lorenz were in Europe this summer. Prof. Lorenz studied at Fontainebleau School of Fine Arts, and they traveled in France and Italy.

Prof. Donald I. McKeown attended a two-week A.I.A. - A.C.S.A. Teachers of Architecture seminar at Grindstone Lake, Wis.

Visiting Professor Karol J. Kocinski spent the summer in Europe traveling and visiting friends. He attended a conference on city planning in England just before returning to Iowa State.

Prof. and Mrs. B. J. Slater became the proud parents of their fourth daughter this summer.

—Leonard Wolj

### TOASTMASTERS ELECT BILL WOODBURN

William M. Woodburn, Des Moines, has been elected president of Opportunity Toastmasters Club. He is a principal in the firm of Woodburn and O'Neil, Des Moines.

### HOME DESIGN CLINIC

The first joint "Design Clinic" sponsored by the A.I.A. and the National Association of Home Builders will be held Nov. 4, 5, 6, 7 at the University of Florida, Gainesville, Fla. Panelists and speakers include Prof. J. T. Landrum, head of architecture, Univ. of Florida, and Edward Beckett, A.I.A. Los Angeles, chairman of the Home Building Industry. Fee \$35. Apply to R. J. Canavan, Director, NAHB, 1100 N. 1st St., Des Moines, Ia.



NEW STAFF AT ISU: From left, Prof. Vernon F. Stone; graduate assistants Jim Wilkins and Scot Stouffer.

### JCC OKAYS INSURANCE PLAN; UNIFORM LIST

Recommendations for insurance coverages to be carried by contractors were adopted by the Joint Co-operative Committee at its July 22 meeting, upon receipt of a report from a six-man committee headed by John W. Nichols of MBI.

R. Wayne Lyon, AIA, JCC Chairman, said the insurance proposals ask for the inclusion of bodily injury and property damage insurance, workmen's compensation and employers liability insurance, and fire insurance with extended coverage among the insurance coverages which a contractor would be required to carry. The minimum recommended for bodily injury was \$100,000 per person, \$300,000 per accident; minimum for property damage was \$50,000.

The JCC also approved revisions to the Standard Check List for Specification Titles and urged the newest edition, revised in January, 1959, be given wide circulation.

In other discussions the contractors brought up the subject of vague and indefinite specifications and suggested that better bidding and lower costs would result if requirements are specific and complete.

Persons having suggestions for JCC consideration should forward them to R. Wayne Lyon, AIA, 526 Liberty Building, Des Moines, Ia.

✓ 36 years of service to Iowa Schools

✓ chalkboard specialists

✓ natural slate--tomorrow's best chalkboard

✓ Neal washable plastic-finished cork tackboard

✓ Gotham "Screw-Tite" (economy) and "Snap-Tite" (1st quality) aluminum trim

✓ Gotham chalkboards

✓ the only complete chalkboard line in the industry

**W. E. Neal  
Slate Company**

1121 Dartmouth Ave., S.E.  
Minneapolis 14, Minn.

## SCHOOL DISPLAY "RULES" ARE EASY TO FOLLOW

For the second year, the Executive Committee of the Iowa Chapter is calling upon members to prepare and forward display mounts for use at the Annual Convention of the Iowa Association of School Boards.

Following the notice last year, a fair number of display mounts were received; enough to make it appear that the exhibit could be greatly expanded for 1959.

Don Foster, executive secretary of the school boards association, has expressed great interest in such an exhibit as a means of helping more school board members gain information about designs of schools now being built in the state.

The convention is November 19 and 20, and will be held at Veterans Memorial Auditorium in Des Moines. In order to assure that all phases of the display can be planned and in place, it is asked that mounts for the display be received at the Iowa Chapter office, 422 Securities Bldg., Des Moines, by November 10. The Chapter is asking that notification of intention to participate in the display be received by November 1.

The rules are simple:

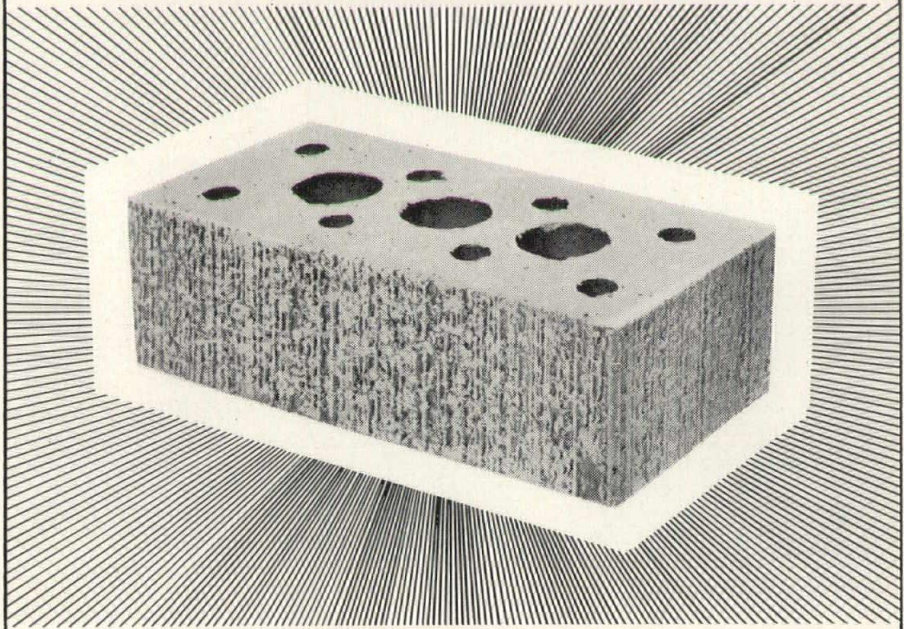
Each presentation should include one or more photographs of completed structures, renderings of those planned or under construction; floor plan or plans necessary to explain the project; basic information about the owner, dates, capacity, costs and area.

Mounts should be of one-eighth inch thick hardboard, mounted whatman, or other suitable rigid material in a size of not more than 30 x 40 inches (vertical or horizontal at the discretion of the firm).

**COST.** No more than three mounts will be accepted from any entrant, and the entrant will pay a fee of \$5 per mount submitted. (This will cover the cost of assembling the mounts and placing them on exhibit).

## A CHEERFUL GOLDEN BLEND

# VINCENT "SHERWOODS"



A strikingly different visual effect will be achieved with the Vincent "Sherwood" blend — a red and gold matte face combination. The Vincent soft-tone blend extremely well with the Golden Matte giving the finished wall a distinctive and modern character. Available in Nominal-8", Norman and SCR sizes. Sample panel and complete information upon request.



**EXCLUSIVE DISTRIBUTOR FOR**  
ELGIN-BUTLER BRICK COMPANY, AUSTIN, TEXAS  
RELiance BRICK COMPANY, DALLAS, TEXAS  
and

NATCO CERAMIC GLAZED TILE CORPORATION  
Ask for complete literature or sample panels showing both glazed and unglazed brick of the highest quality.

## FORT DODGE, IOWA

Manufacturers of Superior Face  
Brick, Glazed Tile, Building Tile,  
and Drain Tile.

**OFFICE**                      **PHONE**                      **FACTORY**  
State Bank Building • 3-7851 • 2½ Miles South of Fort Dodge

**Walter McQuade**

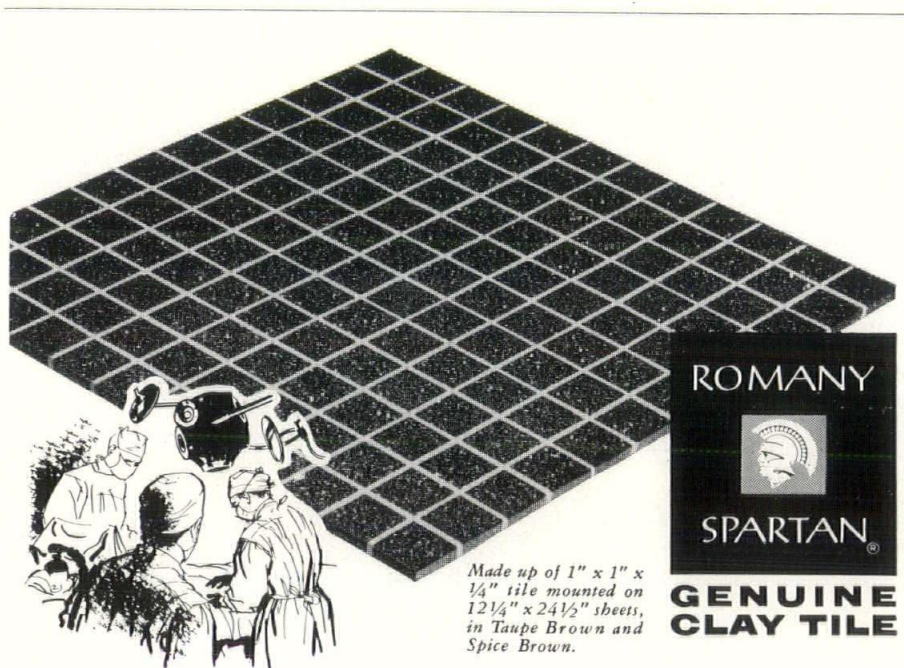
Associate Editor  
Architectural Forum

Walter McQuade received his architectural degree from Cornell in 1947 and has spent most of his time since then on the staff of *Architectural Forum*, winning continually growing attention for the quality of his work. His book, "Schoolhouse," which was published last year, has won him additional national attention and was produced while on leave from Forum. He recently has begun authorship of a column on architecture for *The Nation* magazine. His travels have taken him to many parts of the country and visits to many schools; he will share these experiences from the rostrum at the conference.

**Judge Bernard Tomson**

District Court, Nassau County, N. Y.

Judge Tomson's name and capabilities are known to all who are acquainted with the column "It's The Law," which he prepares regularly for *Progressive Architecture*, of which he is consulting editor. He is the author of "Architectural and Engineering Law," and is preparing a new book, "It's The Law." He is admitted to practice law in New York, Massachusetts and before the U.S. Supreme Court. He has lectured before many chapters and conventions of the A.I.A.



**For operating room safety, specify...  
ROMANY·SPARTAN  
CONDUCTIVE FLOOR TILE**

*Romany·Spartan ceramic tile, properly installed, completely satisfies exacting NFPA safety code*

With unglazed Romany·Spartan conductive tile, explosion hazards created by static electric sparks in anesthetizing areas can be almost completely eliminated. Dust-pressed with straight edges, Romany·Spartan tile has a moisture absorption factor of less

than one-half percent by weight.

Two attractive, easy-to-clean colors blend harmoniously with all wall colors and equipment.

It's economical, too. 12 $\frac{1}{4}$ " x 24 $\frac{1}{2}$ " sheets go down with maximum speed, at minimum cost in conventional conductive mortar or new conductive adhesive setting beds.

For complete details, samples or specifications call:

**Rollin B. Child** Northwest Sales Representative

13006 Excelsior Blvd. • Phone WE. 8-8379 • Hopkins, Minnesota

UNITED STATES CERAMIC TILE COMPANY • THE SPARTA CERAMIC COMPANY  
CERAMIC TILE PANELS, INC.

**GERALD COX MOVES TO BETTENDORF**

Gerald B. Cox, A.I.A., has announced the removal of his office from Davenport to the Professional Arts Building, 1630 State Street, Bettendorf.

**DELMAR ESCH JOINS WOODBURN, O'NEIL**

Delmar Esch, who has been in the office of A. H. McCann & Associates, Clinton, joined the staff of Woodburn & O'Neil, Des Moines, September 14. A 1951 graduate in architecture of the University of Illinois, Esch previously had been associated with Tinsley, Higgins, Lighter and Lyon, Des Moines.

**GRANT VOORHEES' FATHER DIES**

Clarence C. Voorhees, 75, Des Moines, died September 24.

Among survivors are two sons, Donald of Roselle, N. J., and Grant W. Voorhees, A.I.A., of Johnston.

**MANY A SLIP . . .**

That the best laid plans may go awry is no news to architects and contractors, and so it is with others. Walter A. Enoch of the F. W. Dodge office, Des Moines, has had the sad duty of reporting that plans to remove the office and plan room have been delayed. The firm had expected to move its office to 3800 Sixth Avenue, but delay in a construction project forced a change and the office remains in the Securities Building.

## **NEW SHADOWAL ... Pattern On Both Sides**

In addition to regular SHADOWAL, we are now making SHADOWAL with the pattern on both sides of block. Ideal for partition walls, basement walls above grade, Split Level Construction, and for commercial buildings.

### **BES STONE SPLIT BLOCK**

The block with the look of quarried stone. Variety of colors.

### **LATTICE BLOCK**

An ideal block for use in solar screen walls, fences, and many decorative purposes.

CONCRETE . . . MARQUALITE . . . HAYDITE BLOCKS

---

---

OUR NEW AUTOMATIC BATCHING EQUIPMENT INSURES  
UNIFORM MEASURING AND MIXING OF AGGREGATES—  
THUS PRODUCING A MORE UNIFORM BLOCK.

---

---

## **MARQUART CONCRETE BLOCK COMPANY**

110 Dunham Place — Waterloo, Iowa  
Phone ADams 3-8421

Masonry Tools & Supplies

Distributor Sonneborn Products

## ***Swimming Pool Equipment***

- **Vacuum and Pressure Diatomite Filters**
- **Zeolite Softeners**
- **Chemical Feeders**



*For Information Write or Call*



**WATERITE CO.**

OMAHA, NEBRASKA

Phone PLeasant 5582

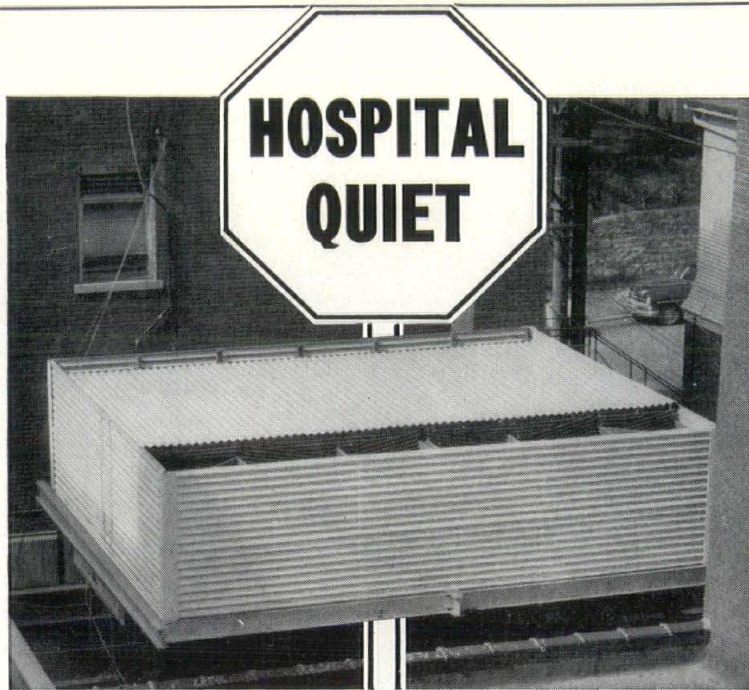
## Alan K. Laing

REGIONAL ROSTRUM

Professor Laing is Chairman of the Department of Architecture at the University of Illinois, a post he has held since 1954. Educated at the University of Denver, M.I.T. and Harvard, he received his apprentice training in architecture in Denver and began his teaching career at the University of Cincinnati in the field of architectural history. In addition to maintaining A.I.A. membership since 1928, he is a former editor of the *Journal of the Society of Architectural Historians*. He has been president of the Central Illinois Chapter, A.I.A.

## Dr. John H. Harris

Superintendent, Des Moines Public Schools  
Dr. John H. Harris has served as a teacher, principal, supervisor, assistant superintendent, superintendent, and college professor. He is a graduate of Bradley University, attended the University of Iowa and the University of Illinois, and received his Master's Degree and Doctor of Education Degree from Columbia University. He came to Des Moines as Superintendent of Schools on July 1, 1957. Prior to that time he had served for four years as Superintendent in Downers Grove, Illinois.



## MARLEY Underflow

Cooling tower location often poses special problems for architects and engineers. In many cases, there is little choice—and when the tower must be placed in the midst of a group of hospital buildings, sound level is of paramount importance.

In UNDERFLOW design, the fan and mechanical equipment are located beneath the tower and force air upward into a plenum chamber from which it is diverted horizontally into dual cooling chambers, then discharged vertically at two sides of the tower. This design innovation baffles fan noise and still permits use of gravity distribution of water, cross-flow air-water contact, and close-packed fill.

Completely enclosed, UNDERFLOW, more than any other tower, blends inconspicuously with architecture.

U.S. and foreign patents granted and pending—all rights reserved.

Represented in  
Iowa by . . .

**R. S. STOVER  
COMPANY**

3½ W. MAIN PHONE 5557 MARSHALLTOWN, IOWA

## HALFORD ESTABLISHES NEW MEXICO OFFICE

Richard Halford, A.I.A., has established a practice at 412 Canyon Road, Santa Fe, New Mexico. Formerly from Clear Lake, he is a graduate of Iowa State University in architectural engineering, and has lived in the southwest since 1956.

## FIBERGLAS IS HOST

Architects of the Central Iowa area were guests of the Owens-Corning Fiberglas Corporation for a presentation entitled "A New Way To Look at Roof Ceiling Costs" at the Hotel Savery September 3. The guests also enjoyed cocktails and hors d'oeuvres.

## DIRECTORY OF ADVERTISERS

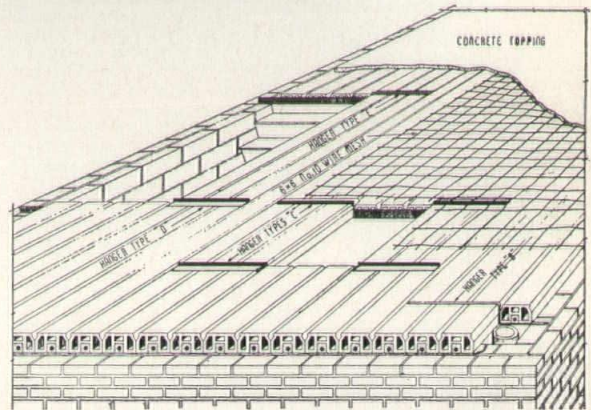
Advertisements of the following firms are now appearing regularly in the *Iowa Architect*:

ADEL CLAY PRODUCTS CO.  
BLUMCRAFT OF PITTSBURGH  
ROLLIN B. CHILD  
GOODWIN COMPANIES  
IOWA CONCRETE BLOCK & MATERIAL  
COMPANY  
IOWA PAINT MANUFACTURING CO.  
MARQUART CONCRETE BLOCK CO.  
MIDWEST CONCRETE INDUSTRIES  
W. E. NEAL SLATE CO.  
PORTLAND CEMENT ASSOCIATION  
SHEFFIELD BRICK AND TILE CO.  
SIOUX CITY MOSAIC CO.  
RALPH N. SMITH CO.  
STRUCTURAL CLAY PRODUCTS INSTITUTE  
R. S. STOVER COMPANY  
SWANSON SALES CO.  
VINCENT CLAY PRODUCTS  
WATERITE CO.  
ZEINER CONSTRUCTION SERVICE, INC.

***Proved in 2000 installations...***

# **SHEFFIELD REINFORCED CLAY TILE BEAMS**

- ★ HIGH STRENGTH
- ★ FIREPROOF
- ★ SOUND PROOF
- ★ VERMIN PROOF
- ★ DUST PROOF
- ★ LOW INSTALLATION COST
- ★ LOWEST "USE COST"



**Sheffield**

**BRICK AND TILE CO.**

**Sheffield, Iowa**

**IOWA'S OLDEST AND LARGEST BLOCK & MATERIAL CO.**

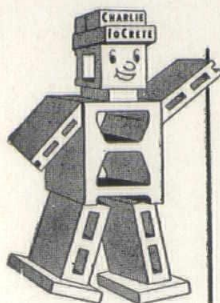
**WELCOMES**

**THE CENTRAL STATES ARCHITECTS**

**We know you will have an interesting and instructive meeting—  
but have a good time as well.**

**If we can be of any service to any of you, be sure to call upon us.**

BETTER  
MATERIALS  
SINCE  
1917



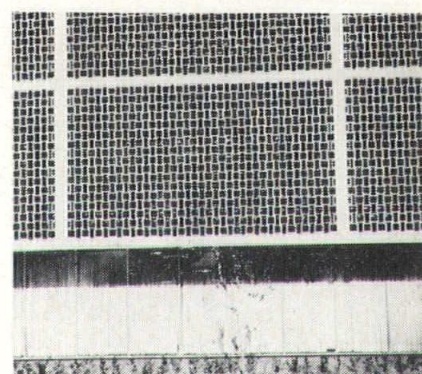
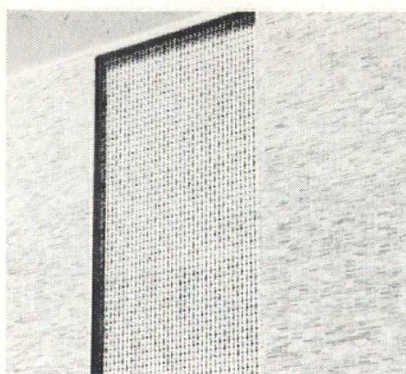
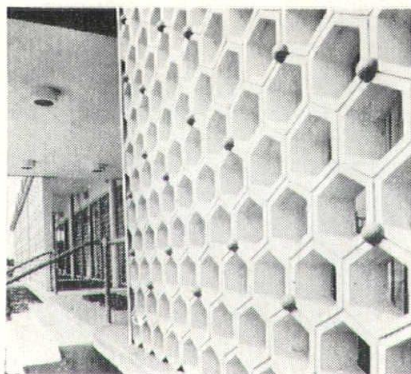
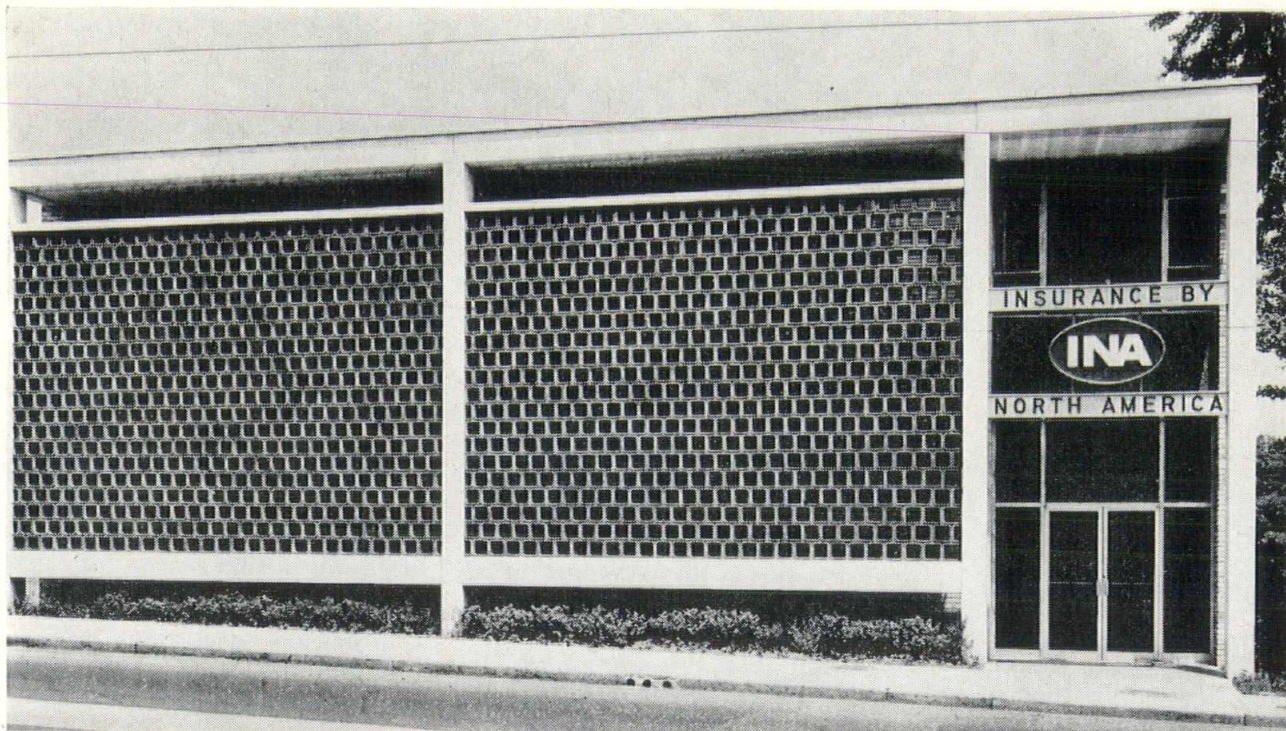
**IOWA  
CONCRETE  
BLOCK &  
MATERIAL  
COMPANY**

Concrete Blocks • Haydite Blocks • Bricks • Chan-  
nel Roof Slabs • Concrete Joist • Owens-Illinois  
Glass Blocks • Lannon Stone • Sanymetal Toilet  
Compartments • Champion Masonry Saws and  
Blades • Chicago Fire Brick • Masonry Materials  
Aluminum and Steel Windows • Arketex Glazed Tile  
Metal Specialties • Concrete Corn Cribs and Silos

SERVICE  
AND  
QUALITY  
ALWAYS

820 S.W. 9th St. PH. AT 8-5751 DES MOINES 9, IOWA  
"Your Problems Keep Us in Business"

# Solar Screens



Shown are just a few of the many attractive designs and patterns of Solar Screens, which afford functional solar control and ventilation in beautiful textures and colors.

Natural Red and Buff clay units of Solar Screens provide decorative finishes which eliminate the need for expensive exterior finishes.

Interior floor space is increased by placing support columns on the outside of the wall. The Solar Screen is supported by floor and roof deck extensions.



For additional information,  
write for Solar Screen Technical Notes to  
Structural Clay Products Institute.

**STRUCTURAL CLAY PRODUCTS INSTITUTE**

REGION 6  
120½ WELCH AVE.,  
AMES, IOWA  
CEdar 2-6623

BRANCH OFFICE  
401 WESLEY TEMPLE BUILDING  
MINNEAPOLIS 4, MINNESOTA  
FEderal 6-7055