

December/January 1998/99 \$4.00

Hawaii Pacific Architecture



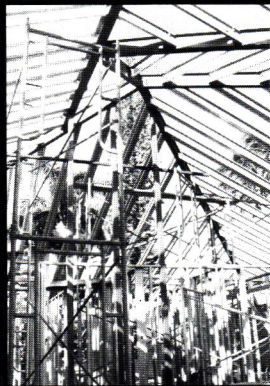
Art and Architecture

BULK RATE
U.S. POSTAGE
PAID
Permit No. 1235
Honolulu, Hawaii

*****5-DIGIT 96816
ALAN H NEMIRDFF
AIA
1465 MOKUNA PL
HONOLULU HI 96816-2715

PMP Company, Ltd., Publishers
1034 Kiliani Ave., Ste. 108
Wahiawa, HI 96786

Market Place



Expert in
Steel Framing

or wood framing
 custom homes
 & commercial buildings
 tel: 255-5777

57 Builders Ltd

GENERAL CONTRACTOR LIC. BC 20825



Advanced Roofing Technology, Inc.

Hawaii's Representatives of
 Quality Roofing/Waterproofing
 and Related Construction
 Materials

With Advanced Roofing Technology...
 "Your building can wear a roof that fits!"

Ph. 235-5542 • Fx 235-5543

Visit our new web site
www.advanced-roofing.com

46-431 D Kahuhipa St.
 Kaneohe, Hawaii 96744



CONCRETE CREATIONS
 of Hawaii, Inc.

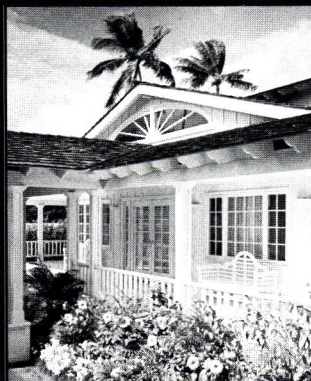
**OUTDOOR
 INDOOR
 CONCRETE
 FURNITURE**



Call us
 for our
FREE
 catalog.

- Planters
- Benches
- Tables
- Custom Window Sills
- Ash Urns
- Trash Receptacles
- Custom Signs

**P: 682-4300
 F: 682-4120**



KAHALA CONSTRUCTION

Remodeling Quality
 Neighborhoods Since 1981

737-7757

Lic. #BC-16706

Our 23rd Year

Known for Quality since 1976



Lic. #B 8458

J W Inc.

**Commercial & Residential
 New & Remodel**

630 Laumaka Street • Honolulu 96819
 Phone 841-5888 • Fax 842-5941



Large Local Stock of
TILES & SLABS

Marble Granite Limestone
 Travertine Slate Sandstone

Fabrication & Installation Available

SHOWROOM/SHOP
 120 Mokauea Street

PHONE
808•528•5533
 FAX
808•528•5503

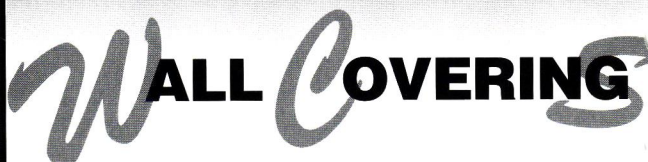
contours of hawaii, inc.

Manufacturer of Wood Doors & Windows
 Custom Cabinets & Millwork
 Distributing: Aluminium • Vinyl • Composite
 Fiberglass Doors & Windows

For information call
Michael Speet or Bill Thompson
 Phone/Fax (808) 841-0297

989 Dillingham Blvd., Honolulu, Hawaii 96817

NATURALS • TEXTILES • METALS • VINYL



The Preferred Source of Architects and Designers.

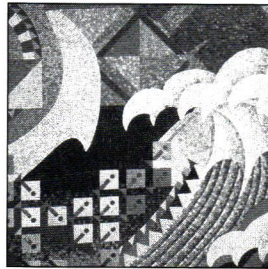
ARCHITECTURAL SURFACES INC.

Gentry Pacific Center, Suite 217E, 560 N. Nimitz Hwy., Honolulu, HI 96817
523-7866 • 1-800-523-7886 • Fax 523-8199

CONTENTS

ART AND ARCHITECTURE

- 5 **A Hawaiian Sense of Place**
Art and structure are integrated at the Hawai'i Convention Center
By Charles R. Sutton, FAIA
- 10 **The Father of Public Art**
The Art in Public Places Program owes its creation to Alfred Preis
by Jan-Peter Preis, AIA, APA
- 14 **Art Meets Architecture**
Architecture school to benefit from public art program
by Gordon O. Wallace, AIA
- 17 **When Art Becomes Business**
Creative artists enter the business world
by Jamie Kemp
- 19 **Architecture on Screen**



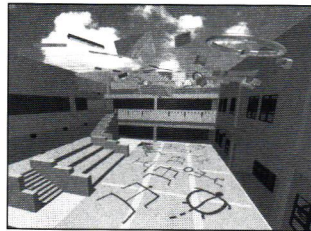
5 A Hawaiian Sense of Place

COMMERCIAL AND RESIDENTIAL REMODELING

- 20 **Remodeling Showcase**

DEPARTMENTS

- 21 **AIA Honolulu 1998 Design Award**
Peter Hsi Associates, Inc.
- 22 **News Briefs**



14 Art Meets Architecture



A Council of the American Institute of Architects

1998-1999 Officers

President: Daniel G. Chun, AIA

Vice President, President-elect: Marie E. Kimmey, AIA;

Secretary/Treasurer: N. Robert Hale, AIA

Directors:

Eugene E. Leucht, AIA;

Douglas P. Luna, AIA;

Lorrin Matsunaga, AIA;

Kurt H. Mitchell, AIA;

Jeffrey Y. Nishi, AIA

Frank Skowronski, AIA

AIA Hawaii State Council and AIA Honolulu

1128 Nuuanu Avenue, Honolulu, Hawaii 96817 (808) 545-4242

AIA Hawaii Island

P.O. Box 491, Hilo, Hawaii 96721 (808) 961-0374

AIA Maui

P.O. Box 929, Wailuku, Hawaii 96793 (808) 244-9574

HPA Editorial Board

Andrew Yanoviak, AIA, chair;

Henry Grimball, AIA;

Nick H. Huddleston, AIA;

Glenn Mason, AIA

Lorrin Matsunaga, AIA;

Puanani Maunu, Assoc. AIA;

Richard Morris, AIA;

Brian Shimomura, AIA;

A. Kimbal Thompson, AIA;

Gordon Tyau, AIA;

Editorial Advisor

Lorrin Matsunaga, AIA

PMP
Publishing
Company, Ltd.

Publisher

Peggy Marshall Murchison

Associate Publisher/

Executive Editor

Jamie Kemp

Art & Production Director

Laurie Whitfield

General Sales Manager

Mark Zanetti

Account Executives

Bill Martinez & Stan Harris

Sales Coordinator

Patty Guillermo

Production

Cheryl Ruddach, Randy Langsi & Rudy Tietjen

IN THIS ISSUE ...

While architects are the artists of the built environment, the importance of fine art in people's lives is not lost on the design professional. Programs that incorporate art into building design, such as Hawaii's Art in Public Places Program, are heartily supported by architects. The articles in this issue provide strong testament to the value of intertwining art with architecture.

COVER: "Gift of Water," a 1997 cast bronze sculpture by Shigeharu Yamada, stands sentry at the entrance to the Hawai'i Convention Center. The sculpture and many other artworks were budgeted into the construction of the center under the Art in Public Places Program.

Photo by Douglas Peebles, courtesy of Hawaii State Foundation on Culture and the Arts

Hawaii Pacific Architecture is the bi-monthly journal of the AIA Hawaii State Council. Subscriptions are \$24 per year. Foreign subscriptions: \$48. Opinions expressed by authors do not necessarily reflect those of either the AIA Hawaii State Council or the publisher. The appearance of advertisements or new products and service information does not constitute an endorsement of the items featured.

Copyright©1998 PMP Company, Ltd.,
1034 Kilani Avenue, Wahiawa, Hawaii 96786.
Phone 621-8200. Fax 622-3025. E-mail:
pmpco1@aol.com All rights reserved. Reproduction of
the whole or any part of the contents of *Hawaii
Pacific Architecture* without written permission is
prohibited. Postmaster: Send change of addresses to
Hawaii Pacific Architecture (ISSN 1089-4470), 1034
Kilani Ave., Suite 108, Wahiawa, Hawaii 96786.