

Hawaii Pacific Architecture



Medical Facilities

PMP Company, Ltd., Publishers
1034 Kiliani Ave., Ste. 108
Wahiawa, HI 96786

*****5-DIGIT 96816
ALAN H NEMIROFF
1465 MOKUNA PLACE
HONOLULU HI 96816-2715

BULK RATE
U.S. POSTAGE
PAID
Permit No. 1023
Honolulu, Hawaii

Market Place



Advanced Roofing Technology, Inc.

Hawaii's Representatives of
Quality Roofing/Waterproofing
and Related Construction
Materials

With Advanced Roofing Technology...
"Your building can wear a roof that fits!"

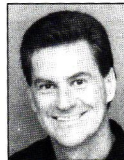
Ph. 235-5542 • Fx 235-5543

Visit our new web site
www.advancedroofing.com

46-431 D Kahuhipa St.
Kaneohe, Hawaii 96744

AARTS BUILDERS & INTERIORS

GENERAL CONTRACTING BC-15693



Bill Emmerson
President

HOTEL RENOVATION SPECIALIST • ADA RENOVATIONS
CARPET, WALL PAPERING • PAINTING, FRAME TO FINISH
RESIDENTIAL & COMMERCIAL

Office: 373-2907 • Fax: 377-8429 • Cell: 366-2907

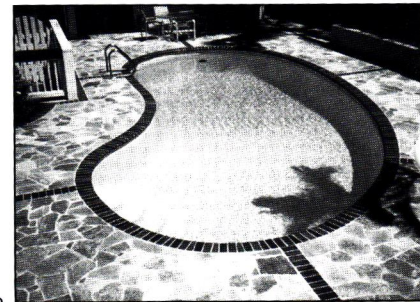
Pham & Associates

- Pool Deck
Specialist and
Stone Work
- Marble
- Concrete Sidewalk
- Masonry
- Room Additions

Con. Lic. #BC-17529

833-9151

2933 Koapaka St., Honolulu 96819



NATURALS • TEXTILES • METALS • VINYL

WALL COVERING

The Preferred Source of Architects and Designers.

ARCHITECTURAL SURFACES INC.

Gentry Pacific Center, Suite 217E, 560 N Nimitz Hwy., Hon., HI 96817

523-7866 • 1-800-523-7886 • Fax 523-8199



CONCRETE CREATIONS
of Hawaii, Inc.

OUTDOOR
INDOOR
CONCRETE
FURNITURE

- Planters
- Benches
- Tables
- Custom Window Sills
- Ash Urns
- Trash Receptacles
- Custom Signs



Call us for
our FREE cat-
alog.

P: 682-4300
F: 682-4120

Our 21st Year

Known for Quality since 1976

Lic. #B 8458
JW Inc.

**Commercial & Residential
New & Remodel**

630 Laumaka Street • Honolulu 96819
Phone 841-5888 • Fax 842-5941



**Large Local Stock
of Tiles & Slabs**

Marble Granite Limestone
Travertine Slate Sandstone

Fabrication & Installation Available

SHOWROOM:
Gentry Pacific Design Center
560 N. Nimitz Hwy., Ste. 109
Ph: 808•528•5533

WAREHOUSE/SHOP
120 Mokauea Street
Ph: 808•848•6615
Fax: 808•528•5503

CONTENTS

MEDICAL FACILITIES

- 4 **Continuing a Legacy**
Japan's Kameda Clinic sets a new standard in medical facility design
by Walter H. Muraoka, AIA
- 10 **Today's Choices for Tomorrow's Needs**
Interior design must reflect technological advances
by Shawn Moynahan
- 12 **Serving Those Who Served**
The Ambulatory Care Clinic at Tripler Army Medical Center
by Larry J. Bongort, AIA
- 16 **Inviting, Not Imposing**
One Kalakaua offers comfortable senior living
by Jennifer W. Scott, AIA
- 18 **Teamwork Gets the Job Done**
Client, architect and contractor must work together
by Michael Y. Nakahara



4 Continuing a Legacy

ROOFING

- 22 **Shelter From the Storm**
Roof designers must take Hawaii's hurricanes into consideration
by Michael D. Smith, CSI

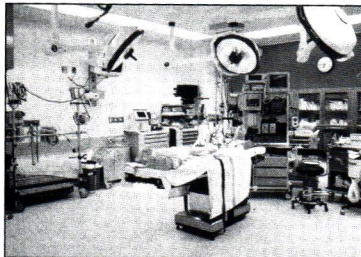
DEPARTMENTS

- 20 **AIA Honolulu Design Award**
John Hara Associates Inc.

IN THIS ISSUE ...

The articles in this issue of *Hawaii Pacific Architecture* are written by different authors but stress the same theme – technology in the medical profession is constantly changing, so technological innovations must be taken into consideration in medical project design. Articles on Hawaii facilities including Kaiser Permanente, Rehabilitation Hospital of the Pacific, One Kalakaua Senior Living and Tripler's VA Ambulatory Care Clinic are supplemented by a study of the Kameda Clinic in Japan designed by Architects Hawaii.

COVER: A graceful watercolor rendering of the VA Ambulatory Care Clinic demonstrates how well the facility will complement the signature colors and design of Tripler Army Medical Center.
Rendering by Carter Black



10 Today's Choices for Tomorrow's Needs



A Council of the American Institute of Architects

1997-1998 Officers

President: Paul H.W. Louie, AIA

Vice President, President-elect: John M. Okita, AIA

Secretary/Treasurer: N. Robert Hale, AIA

Directors:

Daniel G. Chun, AIA;
Marie E. Kimmey, AIA;
Eugene E. Leucht, AIA;
Douglas P. Luna, AIA;
Darrell G. "Buck" Welch, Jr., AIA

AIA Hawaii State Council and AIA Honolulu

1128 Nuuanu Avenue, Honolulu, Hawaii 96817 (808) 545-4242

AIA Hawaii Island
P.O. Box 491, Hilo, Hawaii 96721 (808) 961-0374

AIA Maui

P.O. Box 929, Wailuku, Hawaii 96793 (808) 244-9574

HPA Editorial Board

Glenn Mason, AIA, chair;
Jim Freeman, AIA;
Lorin Matsunaga, AIA;
Sandi Quildon, AIA;
Brian Shimomura, AIA;
A. Kimbal Thompson, AIA;
Gordon Tyau, AIA;
Andrew Yanoviak, AIA

Editorial Advisor

Walter H. Muraoka, AIA



Publisher

Peggy Marshall Murchison

Associate Publisher/

Executive Editor

Jamie Kemp

Art & Production Director

Laurie Whitfield

Sales Manager

Miki Riker

Account Executive

Stan Harris

Sales Coordinator

Patty Guillermo

Production

Cheryl Ruddach

Randy Langsi

Rudy Tietjen

Copyright©1997 PMP Company, Ltd.,
1034 Kilani Avenue, Wahiawa, Hawaii 96786.
Phone 621-8200. Fax 622-3025. E-mail:
pmpco1@aol.com All rights reserved. Reproduction of
the whole or any part of the contents of *Hawaii
Pacific Architecture* without written permission is
prohibited. Postmaster: Send change of addresses to
Hawaii Pacific Architecture (ISSN 1089-4470), 1034
Kilani Ave., Wahiawa, Hawaii 96786.

Hawaii Pacific Architecture is the monthly journal of the AIA Hawaii State Council. Subscriptions are \$36 per year. Opinions expressed by authors do not necessarily reflect those of either the AIA Hawaii State Council or the publisher. The appearance of advertisements or new products and service information does not constitute an endorsement of the items featured.

Japan's Kameda Clinic sets a new standard in medical facility design

Continuing a Legacy

by Walter H. Muraoka, AIA



Children forget they are at a medical facility when they enter this colorful playroom.

The Kameda family of Kamogawa-shi, Chiba Prefecture has a long history as health-care pioneers in Japan. Eleven generations ago a Kameda studied Western medicine from the Dutch. Today there are four Kameda brothers who are physicians and heirs to this unique legacy of introducing improvements to Japan's health care delivery system.

The Kameda brothers retained Architects Hawaii Ltd. (AHL) in 1988 to prepare the first

American-style master development plan for their existing hospital, Kameda Medical Center. AHL and Herman Smith Associates, an American health care consulting firm, completed a long-term facility master development plan for this 760-bed hospital in 1989. The clients immediately saw the value of having a facility master plan to work in concert with providing high-quality health care in a cost-effective and caring environment.

Kameda Medical Center plays a dominant role in the city of Kamogawa, which has a population of 30,000 people. Because the hospital has a reputation as a high-quality care provider, it attracts patients from neighboring towns and the Tokyo region. Kameda's standards also have to meet American expectations because it serves U.S. military personnel from Yokosuka Naval Base and Yokota Air Force Base.

Excellence Despite Obsolescence

Despite its excellent reputation, the facilities were unable to handle the workload. Outpatient and inpatient traffic inter-mixed throughout the hospital. Additions and renovations had been made only to resolve immediate problems without considering long-term implications.

The Kameda brothers realized that having a master plan gave them a logical way to renovate their facility. They established priorities for key projects, allowed for changes in technology, set project schedules and had better control over expenditures.

Plan implementation began immediately. Phase I was a 500-car parking structure. Before the structure was completed, there was no organized parking for the hospital. The parking structure is believed to be the first of its kind for a hospital in Japan.