

Hawaii Pacific Architecture



- Shopping Centers
- Cladding

ALAN H NEMIROFF
 1465 MOKUNA PLACE
 HONOLULU HI 96816-2715
 *****5-DIGIT 96816

PMP Company, Ltd., Publishers
 1034 Kilani Ave., Ste. 108
 Wahiawa, HI 96786

BULK RATE
 U.S. POSTAGE
 PAID
 Permit No. 1023
 Honolulu, Hawaii

Market Place



Advanced Roofing Technology, Inc.

Hawaii's Representatives of
Quality Roofing/Waterproofing
and Related Construction
Materials

With Advanced Roofing Technology...
"Your building can wear a roof that fits!"

Ph. 235-5542 • Fx 235-5543

46-431 D Kahuhipa St.
Kaneohe, Hawaii 96744



KAHALA CONSTRUCTION

Lic. BC16706

Remodeling Quality Neighborhoods
Since 1981
545-7717



Merit Award Winner
National Remodeling Council

Our 20th year

Known for Quality since 1976



Lic. #B 8458

**Commercial & Residential
New & Remodel**

630 Laumaka Street • Honolulu 96819
Phone 841-5888 • Fax 842-5941



The Blue Print Company

Complete Reprographic Services

Printing • Copying • Color Copying • Plotting Bureau • Supplies
CAD Plotters Sales & Service • Plan File Storage and Retrieval

Pick-up and Delivery Available
"Making plans for Hawaii since 1914"

820 S. Beretania St., Suite 200 Honolulu, HI 96813
Ph. (808) 536-6148 Fax (808) 536-6151
E-MAIL: bluprnt@aloha.net

HI. Hearth & Leisure



STOVES • CHIMNEY • ACCESSORIES • BBQ'S
ULTIMATE GRILLS • FIREPLACES

GARY R. MOORE
President

3640 BALDWIN AVE. P.O. BOX 329
MAKAWAO, MAUI, HI 96768
OAHU 531-4569 • MAUI 572-4569
FAX 572-2445

NATURALS • TEXTILES • METALS • VINYL

WALL COVERINGS

The Preferred Source of Architects and Designers.

ARCHITECTURAL SURFACES INC.

Gentry Pacific Center, Suite 217E, 560 N Nimitz Hwy., Hon., HI 96817

523-7866 • 1-800-523-7886 • Fax 523-8199



**Large Local Stock
of Tiles & Slabs**

Marble Granite Limestone
Travertine Slate Sandstone

Fabrication & Installation Available

SHOWROOM:
Gentry Pacific Design Center
560 N. Nimitz Hwy., Ste. 109
Ph: 808•528•5533

WAREHOUSE/SHOP
120 Mokauea Street
Ph: 808•848•6615
Fax: 808•528•5503

CONTENTS

SHOPPING CENTERS

- 4 **The Retail Explosion on Guam**
Design and merchandising play key roles
by Ron Smith, AIA
- 10 **The Retailing Development Team**
Working together helps assure success
by Marlene DeCosta
- 13 **Maximum Work, Minimum Noise**
The Ala Moana Center expansion
by Bob O'Brien
- 14 **Much More Than Stores**
Shopping center design and development
by Kurt Mitchell, AIA
- 18 **A Secure Shopping Environment**
Security systems are a necessary component
of design
by John Tsukayama



4 The Retail Explosion on Guam

CLADDING

- 22 **Metal Cladding in Commercial Construction**
by Paul Rasmussen

DEPARTMENTS

- 9 **News Briefs**
- 20 **AIA Award of Merit**
AM Partners

IN THIS ISSUE ...

Gone are the days of limited shopping options in Hawaii and the Pacific. Numerous major retailers now have a strong presence in Hawaii and on Guam, offering shoppers more choices and competitive prices. Architects benefit by being offered new opportunities for creative and responsible shopping center design.

COVER: The dramatic superstructure of Kaahumanu Center in Kahului, Maui, was designed by Altoon & Porter Architects to reflect the tall ships that first brought trade and commerce to Hawaii. The center was the 1996 recipient of the International Design and Development Award for the Renovation or Expansion of an Existing Project from the International Council of Shopping Centers.

Photo courtesy of Pacific Rim Marketing Group

Hawaii Pacific Architecture is the monthly journal of the AIA Hawaii State Council. Subscriptions are \$36 per year. Opinions expressed by authors do not necessarily reflect those of either the AIA Hawaii State Council or the publisher. The appearance of advertisements or new products and service information does not constitute an endorsement of the items featured.



A Council of the American Institute of Architects

1996-97 Officers

- President:** Glenn E. Mason, AIA
- Vice President, President-elect:** Paul H.W. Louie, AIA
- Secretary/Treasurer:** Allen Kajioka, AIA
- Executive Director:** Beverly H. McKeague, Hon. AIA
- Directors:**
 - N. Robert Hale, AIA;
 - Steven H. Heller, AIA;
 - Marie E. Kimmey, AIA;
 - Eugene E. Leucht, AIA;
 - Douglas P. Luna, AIA;
 - Kurt H. Mitchell, AIA;
 - Darrell G. Welch, Jr., AIA

AIA Hawaii State Council and AIA Honolulu

1128 Nuuanu Avenue, Honolulu, Hawaii 96817 (808) 545-4242

AIA Hawaii Island

P.O. Box 491, Hilo, Hawaii 96721 (808) 961-0374

AIA Maui

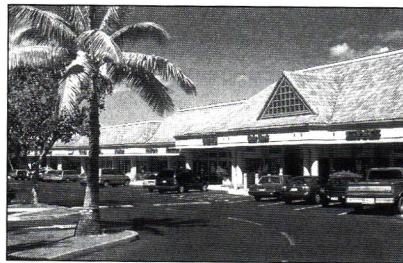
P.O. Box 929, Wailuku, Hawaii 96793 (808) 244-9574

HPA Editorial Board

- Sandi Quildon, AIA, chair;
- Jim Freeman, AIA;
- Henry Grimball, AIA;
- Glenn Mason, AIA;
- Lorin Matsunaga, AIA;
- Brian Shimomura, AIA;
- A. Kimbal Thompson, AIA;
- Gordon Tyau, AIA;
- Andrew Yanoviak, AIA

Guest Editor

Kurt Mitchell, AIA



14 Much More Than Stores

PMP Company, Ltd.

Publishers

Publisher/Executive Editor

Peggi Marshall Murchison

Editor/Associate Publisher

Jamie Kemp

Art & Production Director

Laurie Whitfield

Sales Manager

Miki Riker

Account Executive

Stan Harris

Production

Cheryl Ruddach

Copyright©1997 PMP Company, Ltd.,
1034 Kilani Avenue, Wahiawa, Hawaii 96786.
Phone 621-8200. Fax 622-3025. E-mail:
pmpco1@aol.com All rights reserved. Reproduction of
the whole or any part of the contents of *Hawaii
Pacific Architecture* without written permission is
prohibited. Postmaster: Send change of addresses to
Hawaii Pacific Architecture (ISSN 1089-4470), 1034
Kilani Ave., Wahiawa, Hawaii 96786.