

May 1997/\$3.00

# Hawaii Pacific Architecture



- Computers in Design
- Kitchens and Baths

BULK RATE  
U.S. POSTAGE  
PAID  
Permit No. 1023  
Honolulu, Hawaii

PMP Company, Ltd., Publishers  
1034 Kiliani Ave., Ste. 108  
Wahiawa, HI 96786

# Market Place



Advanced Roofing Technology, Inc.

Hawaii's Representatives of  
Quality Roofing/Waterproofing  
and Related Construction  
Materials

With Advanced Roofing Technology...  
"Your building can wear a roof that fits!"

Ph. 235-5542 • Fx 235-5543

46-431 D Kahuhipa St.  
Kaneohe, Hawaii 96744

**Our 20th year**

*Known for Quality since 1976*

**JW Inc.**  
Lic. #B 8458

**Commercial & Residential  
New & Remodel**

630 Laumaka Street • Honolulu 96819  
Phone 841-5888 • Fax 842-5941



## KAHALA CONSTRUCTION

Lic. 8C16706

Remodeling Quality Neighborhoods  
Since 1981  
**545-7717**



Merit Award Winner  
National Remodeling Council



## The Blue Print Company

Complete Reprographic Services

Printing • Copying • Color Copying • Plotting Bureau • Supplies  
CAD Plotters Sales & Service • Plan File Storage and Retrieval

Pick-up and Delivery Available  
"Making plans for Hawaii since 1914"

820 S. Beretania St., Suite 200 Honolulu, HI 96813  
Ph. (808) 536-6148 Fax (808) 536-6151  
E-MAIL: bluprnt@aloha.net



## CONCRETE CREATIONS of Hawaii, Inc.

**OUTDOOR  
INDOOR  
CONCRETE  
FURNITURE**



- Planters
- Benches
- Tables
- Custom Window Sills
- Ash Urns
- Trash Receptacles
- Custom Signs

Call us for  
our **FREE**  
catalog.

**P: 682-4300  
F: 682-4120**

NATURALS • TEXTILES • METALS • VINYL

# WALL COVERINGS

*The Preferred Source of Architects and Designers.*

ARCHITECTURAL SURFACES INC.

Gentry Pacific Center, Suite 217E, 560 N Nimitz Hwy., Hon., HI 96817

523-7866 • 1-800-523-7886 • Fax 523-8199



## Large Local Stock of Tiles & Slabs

Marble Granite Limestone  
Travertine Slate Sandstone

Fabrication & Installation Available

**SHOWROOM:**  
Gentry Pacific Design Center  
560 N. Nimitz Hwy., Ste. 109  
Ph: 808•528•5533

**WAREHOUSE/SHOP**  
120 Mokauea Street  
Ph: 808•848•6615  
Fax: 808•528•5503

# CONTENTS

## COMPUTERS IN DESIGN

- 5 **CADD: Is the Promise a Reality?**  
Local architects offer views  
*by Brian Shimomura, AIA*
- 8 **CADD: Better Than Ever**  
A computer on every desktop  
*by Felicia Provencal*
- 10 **CADD Liability Issues**  
Unauthorized reuse causes problems  
*by Mary Yoshimoto*
- 12 **Retaining Ownership Rights**  
Copyright law
- 14 **Builders' CADD**  
Computer design from the  
construction perspective  
*by Bill Curtis*

## KITCHENS AND BATHS

- 18 **The Comforts of Home**  
Trends in kitchens and baths  
*by Jamie Kemp*

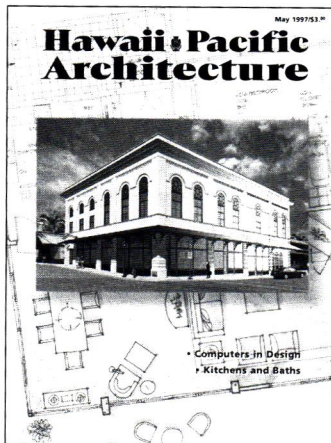
## DEPARTMENTS

- 19 **News Briefs**
- 20 **AIA Award of Merit**  
*Kober/Hanssen/Mitchell Architects*  
*Mitsunaga & Associates Inc.*

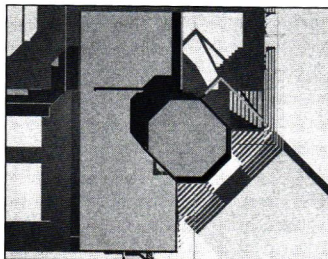
## IN THIS ISSUE ...

Computer aided design and drafting is no longer a specialized function used by only a small number of architects; today, its use and applications are widespread throughout the profession. This issue explores CADD use from liability, copyright and construction standpoints, while Hawaii architects offer personal opinions on the use of computers in their practices. *Hawaii Pacific Architecture* acknowledges Urban Works, Inc., and Envision Architecture for their contributions of CADD drawings to this issue.

*Hawaii Pacific Architecture* is the monthly journal of the AIA Hawaii State Council. Subscriptions are \$36 per year. Opinions expressed by authors do not necessarily reflect those of either the AIA Hawaii State Council or the publisher. The appearance of advertisements or new products and service information does not constitute an endorsement of the items featured.



The cover composite image depicts the transition from a traditional hand drawing to computer aided design using ArchiCAD by Graphisoft. Envision Architecture, Honolulu, was contracted by Spencer Mason Architects to develop a virtual building model to show the renovation of the Toyama Building in Hilo. Envision Architecture is affiliated with the firm of Carleton Hawpe & Associates and is an authorized reseller/trainer for ArchiCAD.



8 CADD: Better Than Ever



A Council of the American Institute of Architects

### 1996-97 Officers

- President:** Glenn E. Mason, AIA
- Vice President, President-elect:** Paul H.W. Louie, AIA
- Secretary/Treasurer:** Allen Kajioka, AIA
- Executive Director:** Beverly H. McKeague, Hon. AIA
- Directors:**
  - N. Robert Hale, AIA;
  - Steven H. Heller, AIA;
  - Marie E. Kimmey, AIA;
  - Eugene E. Leucht, AIA;
  - Douglas P. Luna, AIA;
  - Kurt H. Mitchell, AIA;
  - Darrell G. Welch, Jr., AIA

### AIA Hawaii State Council and AIA Honolulu

1128 Nuuanu Avenue, Honolulu, Hawaii 96817 (808) 545-4242

### AIA Hawaii Island

P.O. Box 491, Hilo, Hawaii 96721 (808) 961-0374

### AIA Maui

P.O. Box 929, Wailuku, Hawaii 96793 (808) 244-9574

### HPA Editorial Board

- Sandi Quildon, AIA, chair;
- Jim Freeman, AIA;
- Henry Grimball, AIA;
- Glenn Mason, AIA;
- Lorin Matsunaga, AIA;
- Brian Shimomura, AIA;
- A. Kimbal Thompson, AIA;
- Gordon Tyau, AIA;
- Andrew Yanoviak, AIA

### Guest Editor

Brian Shimomura, AIA

## PMP Company, Ltd.

Publishers

**Publisher/Executive Editor**  
Peggi Marshall Murchison

**Editor/Associate Publisher**  
Jamie Kemp

**Art & Production Director**  
Laurie Whitfield

**Sales Manager**  
Miki Riker

**Account Executive**  
Stan Harris

**Production**  
Cheryl Ruddach

Copyright©1997 PMP Company, Ltd.,  
1034 Kilani Avenue, Wahiawa, Hawaii 96786.  
Phone 621-8200. Fax 622-3025. E-mail:  
pmpco1@aol.com All rights reserved. Reproduction of  
the whole or any part of the contents of *Hawaii  
Pacific Architecture* without written permission is  
prohibited. Postmaster: Send change of addresses to  
*Hawaii Pacific Architecture* (ISSN 1089-4470), 1034  
Kilani Ave., Wahiawa, Hawaii 96786.