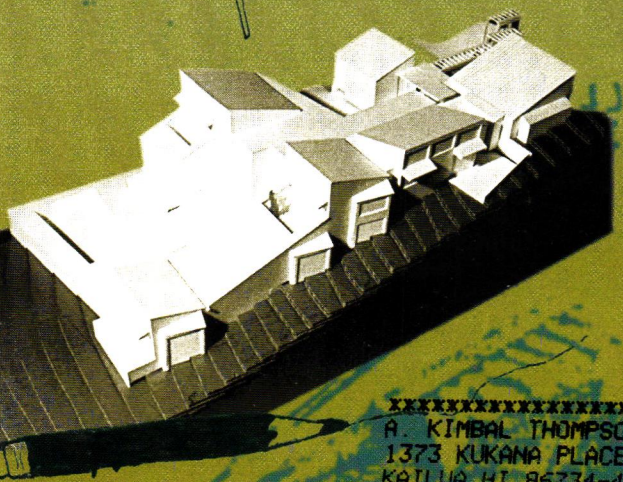
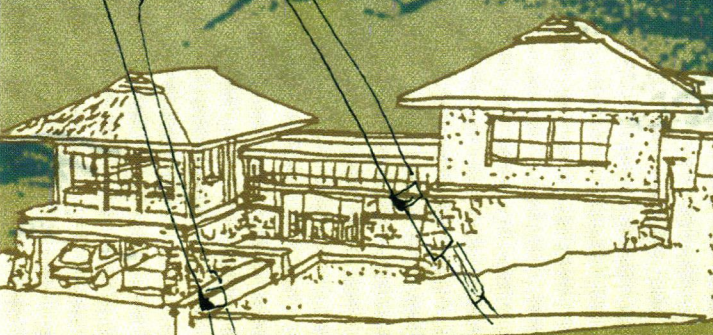


Hawaii Pacific Architecture

• Young Architects at Work



XXXXXXXXXXXXXXXXXXXXXXXXXXXX5-DIGIT 96734
A. KIMBAL THOMPSON
1373 KUKANA PLACE
KAILUA HI 96734-4527

BULK RATE
U. S. POSTAGE PAID
HONOLULU, HAWAII
PERMIT NO. 1023

INTRODUCING *the* FRAMEWORKS® BUILDING SYSTEM. *A stable* HOME IN AN UNCERTAIN WORLD.

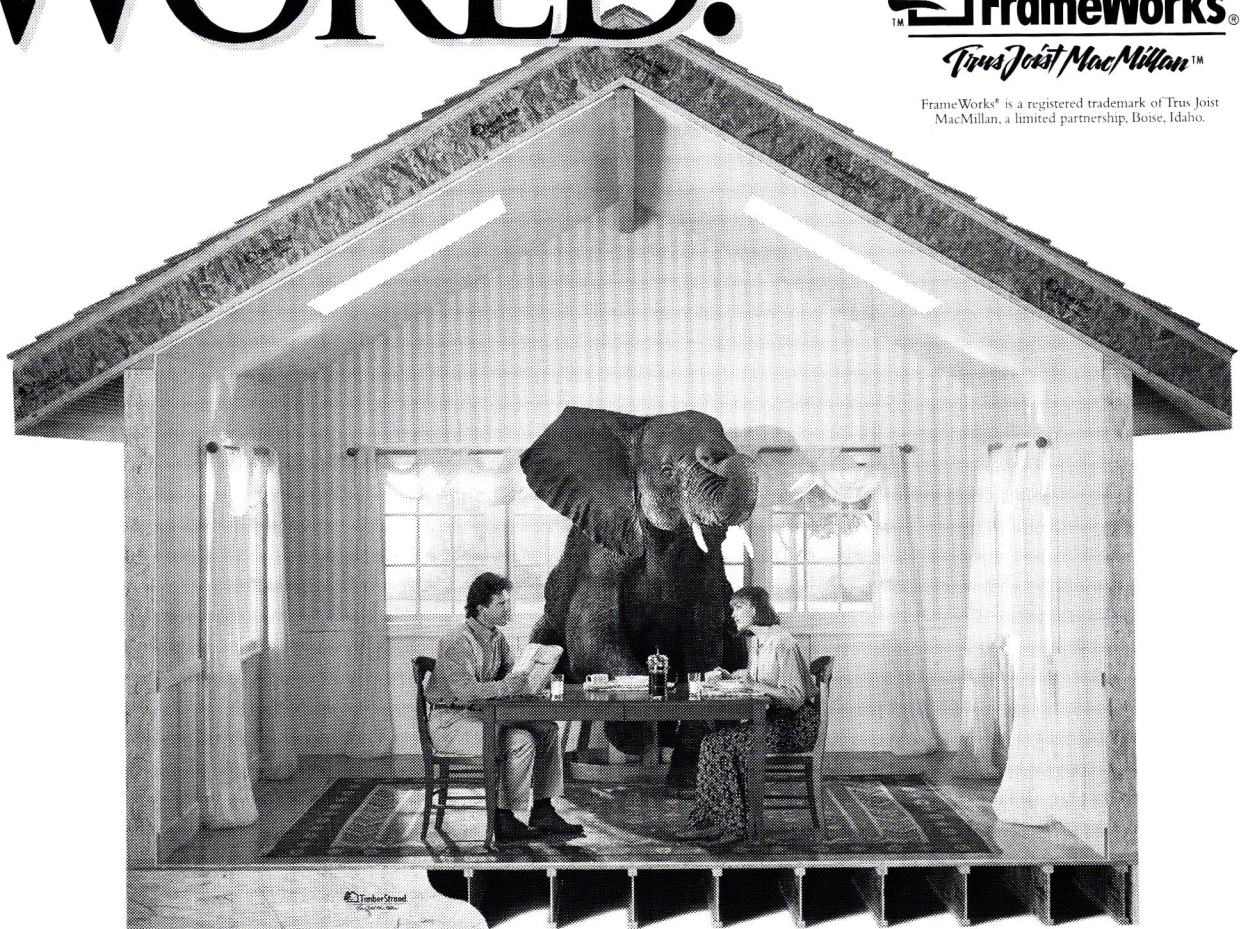
Your home should be a place that makes you feel safe—both as a place to live and as an investment. The challenge is how to build this better home when faced with increased pressure on timber resources and the environment.

Our revolutionary solution is the FrameWorks® Building System. This system creates a home that's made of integrated structural systems rather than pieces of lumber. These engineered elements let us place strength where it's needed, so we don't put material where it *isn't* needed. The result: stronger homes that make better use of our resources.

Over the last thirty years, we've developed technologies that let us take the natural strengths of wood and reconfigure them in ways that are even more efficient. Talk to the people below about how you can build with the FrameWorks® Building System.



FrameWorks® is a registered trademark of Trus Joist MacMillan, a limited partnership, Boise, Idaho.



HONSADOR

Oahu: 682-2011 Kauai: 246-2412

Hilo: 961-6000 Maui: 877-5045

Kona: 329-0738

RINELL WOOD SYSTEMS, INC.

429 Waiakamilo Road, Room 1

Honolulu, Hawaii 96817

Phone: 841-7688 Fax 841-7680

CONTENTS

YOUNG ARCHITECTS

- 8 **The Next Generation**
Children of architects share their aspirations
by Kevin Funasaki
- 10 **A Bright Future**
Architecture students are among the best
by Gordon Tyau
- 12 **Architects in the City**
Design professionals share their road to success
by Kevin Funasaki
- 15 **Teach the Children**
Public Education Committee does its part for education
by Kevin Funasaki
- 18 **Out on Your Own**
Starting your small design firm
by Sam Slom
- 19 **Insurance for Small Firms**
by Mary Yoshimoto



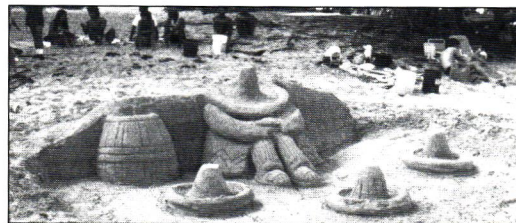
15 Teach the Children

REMODELING

- 20 **Innovative Remodeling**
by Virginia Macdonald

DEPARTMENTS

- 6 **News Briefs**
- 20 **New Products**



10 A Bright Future

IN THIS ISSUE ...

Hawaii Pacific Architecture focuses on the next generation of architects. Kevin Funasaki examines the aspirations of several University of Hawaii School of Architecture students and the enrollment trends of the school. He also looks at alternative careers for young architects in city government. Sam Slom and Mary Yoshimoto offer tips on starting your own design firm.

This month's cover graphically illustrates the life of architecture students.

Hawaii Pacific Architecture is the monthly journal of the AIA Hawaii State Council. Subscriptions are \$36 per year. Opinions expressed by authors do not necessarily reflect those of either the AIA Hawaii State Council or the publisher. The appearance of advertisements or new products and service information does not constitute an endorsement of the items featured.



A Council of the American Institute of Architects

1996-97 Officers

- President:** Glenn E. Mason, AIA
- Vice President, President-elect:** Paul H.W. Louie, AIA
- Secretary/Treasurer:** Allen Kajjoka, AIA
- Directors:** Theodore E. Garduque, AIA; N. Robert Hale, AIA; Steven H. Heller, AIA; Marie E. Kimmey, AIA; Eugene E. Leucht, AIA; Beverly H. McKeague, Hon. AIA; Kurt H. Mitchell, AIA; Darrell G. Welch, Jr., AIA

AIA Hawaii State Council and AIA Honolulu

1128 Nuuanu Avenue, Honolulu, Hawaii 96817 (808) 545-4242

AIA Honolulu President: Barry John Baker, AIA

AIA Hawaii Island

P.O. Box 491, Hilo, Hawaii 96721 (808) 961-0374

President: Robert E. Oliver III, AIA

AIA Maui

P.O. Box 929, Wailuku, Hawaii 96793 (808) 244-9574

President: August Percha, AIA

HPA Editorial Board

- Sandi Quildon, AIA, chair;
- Jim Freeman, AIA; Kevin H. Funasaki, AIA;
- Henry Grimball, AIA; Glenn Mason, AIA;
- Lorrin Matsunaga, AIA; Hale Takazawa;
- A. Kimbal Thompson, AIA; Gordon Tyau, AIA
- and Andrew Yanoviak, AIA.

PMP Company, Ltd.

Publishers

Publisher/Executive Editor

Peggi Marshall Murchison

Managing Editor

Errol J. Christian

Art Director

Maria Bracho

Production Manager

Rose Cabanlit

Sales Manager

Miki Riker

Account Executive

Stan Harris

Assistant Editor

Tisha O'Neill

Guest Editor

Kevin Funasaki

Production

Cheryl Ruddach

Frances Teixeira

Copyright©1996 PMP Company, Ltd., 1034 Kilani Avenue, Wahiawa, Hawaii 96786. Phone 621-8200. Fax 622-3025. All rights reserved. Reproduction of the whole or any part of the contents of *Hawaii Pacific Architecture* without written permission is prohibited. Postmaster: Send change of addresses to *Hawaii Pacific Architecture* (ISSN 1089-4470), 1034 Kilani Ave., Wahiawa, Hawaii 96786.