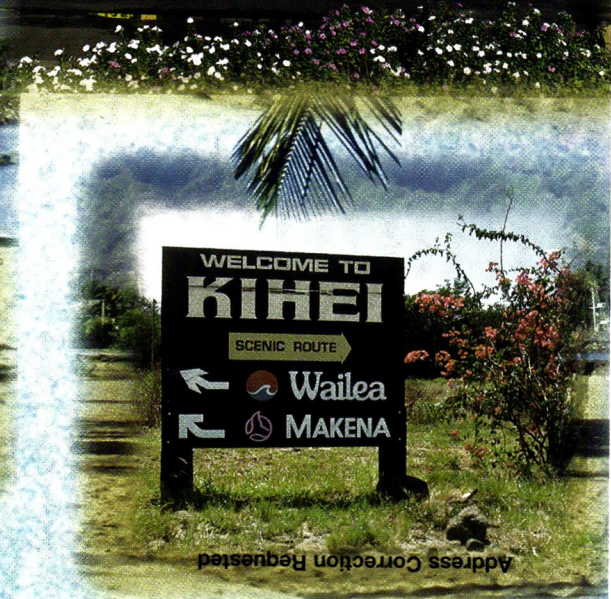
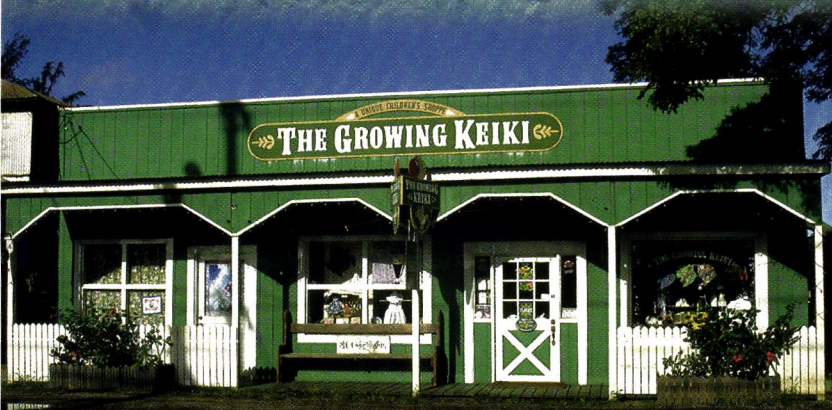
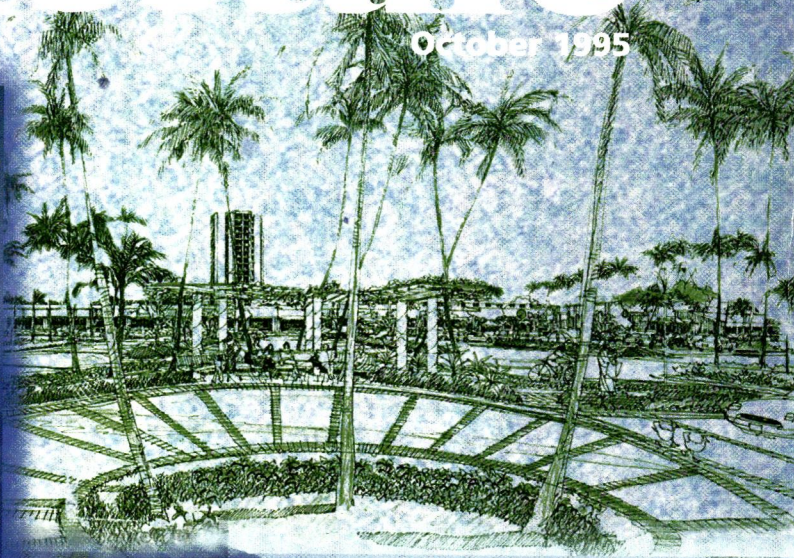


Hawaii Pacific Architecture



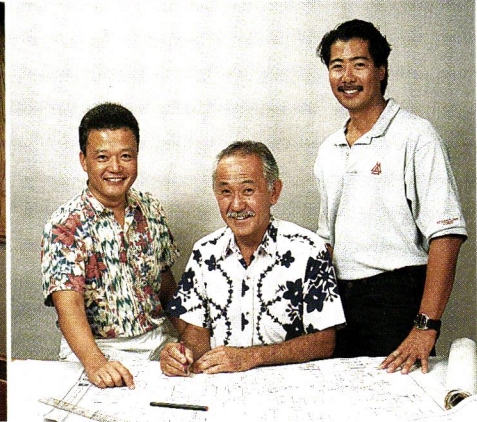
October 1995



Address Correction Requested

BULK RATE
U.S. POSTAGE
PAID
Permit No. 1023
Honolulu, Hawaii

PMP Company, Ltd., Publishers
1034 Kiliani Ave., Ste. 108
Wahiawa, HI 96786



Tampering with Tradition

In 1953, Like Like Drive Inn Restaurant opened in Honolulu as a drop-in diner that was slated to become an isle-style tradition.

Allied Builders was tapped for contracting duties in 1994 when Roy and Dora Hayashi, owners of the one-acre Keeaumoku property, decided to create the two-story Like Like Plaza, enhancing the popular restaurant, adding ADA amenities, and offering new tenant opportunities.

Observes Doc Sasaki, senior designer for Architects Hawaii, Ltd.: "Renovations can be technically and emotionally tough. Without available records, there were a few surprises — even some old railroad track. Allied's people were always cooperative and efficient. The working chemistry was good."

"Keeping hospitality in place was important to us," recalls Hayashi of Like Like's remodeling. "We appreciated Allied's caring, organized approach." Adds his wife, "I looked forward to our weekly progress meetings and missed seeing everyone when we were pau."



ALLIED BUILDERS SYSTEM
Teamwork. Our motto. Our method.

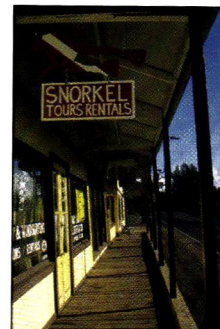
1717 Akahi Street, Honolulu, Hawaii 96819, Telephone (808) 847-3763
Contractor License BC-5068

Architect Doc Sasaki, Owner Roy Hayashi,
ABS Project Engineer Winton Saito

CONTENTS

NEIGHBORHOOD PLANNING

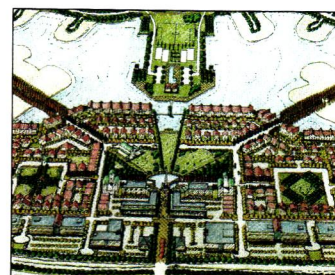
- 5 Challenging Times Ahead for Neighborhood Planning**
Local governments, residents join to enhance communities
by Tom Fee, AICP
- 6 The Haleiwa Experience**
Main Street participants strive to preserve historic ambiance, spur economy
by Pamela L. Harlow
- 12 Kailua Urban Design Task Force**
Group puts community-based planning into action
by A. Kimbal Thompson, AIA
- 16 Developing a Neotraditional Community**
Breaking the mold of traditional suburban developments
by Grant Murakami
- 20 Maui County's Community Associations, Country Towns**
A preferred base for growth, development
by Chris Hart
- 22 Kihei 2000**
Working toward a better community
by Gene Thompson



6 The Haleiwa Experience

DEPARTMENTS

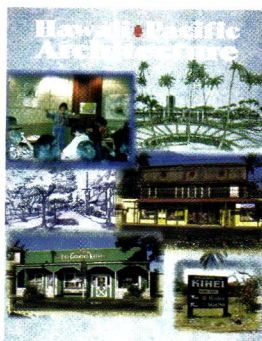
- 10 News Briefs**
A Lawyer's Perspective
- 19 Limit Your Liability**
by Michael D. Tom, J.D.
- 24 Industry Update**
Weapons Against Termites
by Jim Reinhardt, AIA and Julian Yates, Ph.D.
- 29 New Products**



16 Developing a Neotraditional Community

IN THIS ISSUE ...

Hawaii Pacific Architecture focuses on neighborhood planning. Pam Harlow discusses how the Main Street program has contributed to the revitalization of Haleiwa. Chris Hart talks about how ongoing community-based initiatives are becoming the preferred framework for future growth and development in Maui County. A. Kimbal Thompson, AIA, reviews what steps have been taken by the Kailua Urban Design Task Force to promote Kailua as a special place to live, work and play. Gene Thompson addresses what the Kihei Community Association plans to do to transform Kihei into the "coastal heart of Maui." Tom Fee, AICP, discusses how government's ability to provide public services is diminishing and that community leaders must get involved to assist in reestablishing service delivery priorities. This month's cover features items which portray various stages of the community planning process—a community meeting, design proposals, revived landmarks and a community sign. The Hawaiian Tapa used on the cover and throughout the magazine is courtesy of the Bishop Museum.



Digital collage by Maria Bracho

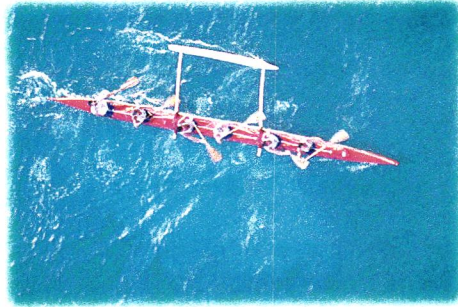
PMP Company Ltd Publishers

- Publisher/Executive Editor**
Peggi Marshall Murchison
- Managing Editor**
Amye H. Turner
- Art Director**
Maria Bracho
- Sales Manager**
Miki Riker
- Guest Editors**
Tom Fee, AICP, and Chris Hart
- Production Manager**
Rose Cabanlit
- Graphics**
Cheryl Ruddach,
Frances Teixeira
Rudy Tietjen

Copyright©1995 PMP Company, Ltd.,
1034 Kilani Avenue, Wahiawa, Hawaii 96786.
Phone 621-8200. Fax 622-3025. All rights reserved.
Reproduction of the whole or any part of the contents of *Hawaii Pacific Architecture* without written permission is prohibited. Postmaster: Send change of addresses to *Hawaii Pacific Architecture* (ISSN 0919-83111), 1034 Kilani Ave., Wahiawa, Hawaii 96786.

Hawaii Pacific Architecture is the monthly journal of the AIA Hawaii State Council. Subscriptions are \$28 per year. Opinions expressed by authors do not necessarily reflect those of either the AIA Hawaii State Council or the publisher. The appearance of advertisements or new products and service information does not constitute an endorsement of the items featured.

ATTITUDE IS EVERYTHING.



Award-winning homes are created by people with award-winning attitudes.



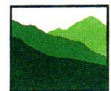
Sub-Zero Distributors believes in an attitude of teamwork from design to finished construction.



Thank you to all the builders who feature Sub-Zero built-in refrigeration in their 1995 Parade of Homes entries.



Castle & Cooke
HOMES HAWAII
MILILANI
NAKUKU



Castle & Cooke
HOMES HAWAII
ROYAL
KUNIA

Watt Homes



WAILEA PUALANI ESTATES
AT WAILEA RESORT

Stanford S. Carr Development Corp.



Green View
VILLAS

Armstrong Builders, Ltd.