

Hawaii Pacific Architecture

August 1995



PAID
POSTAGE
RATES

Address Correction Requested

PMP Company
1034 Kilauea
Honolulu, HI 96813

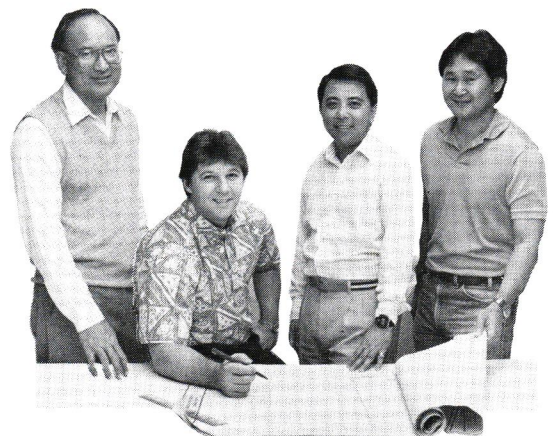


When you can't halt hospitality... Allied comes through

Major improvements in scattered areas at the Princess Kaiulani Hotel called for a supremely accommodating contractor. Even as beautifully redesigned lobbies emerged, envisioned by the Gulstrom Kosko Group, and the popular Aina'hau Showroom expanded with the overview of Ted Garduque, AIA, the hotelier continued to serve.

"We were on a tight timeline facing a holiday opening," observed Garduque. "Allied's crews were always responsive and concerned with quality execution. Even when the normal problems in renovation occurred, they stayed on top of things."

Adds GKG's David Chung, AIA: "Allied reacts well to the design professional. Beyond this, they know that change at hotels cannot interfere with visitor pleasure. They worked odd hours and with diplomacy when hotel guests were around."



ALLIED BUILDERS SYSTEM
Teamwork. Our motto. Our method.

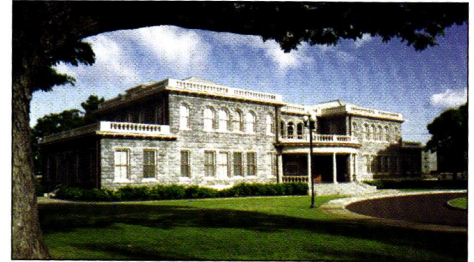
1717 Akahi Street Honolulu, Hawaii 96819 Telephone (808) 847-3763
Contractor License BC-5068

Architect David Chung, Hotel Food and Beverage Manager Chip Bahouth,
Architect Ted Garduque, ABS Project Manager Ed Sakai

CONTENTS

EDUCATIONAL BUILDINGS

- 8 **The Role of School Design**
Well-designed, maintained facilities
keep communities involved
by Nick Huddleston, AIA
- 12 **Achieving Accessibility in Educational Facilities**
Public, private schools work to obtain goal
by Bruce M. Clark



8 The Role of School Design

EXTERIOR FINISHES

- 29 **Paint Companies Go High-tech**
Computers simplify color selection process
by Dean Ontai

SPECIAL EVENT

- 4 **The East-West Encounter**
Design awards program, presentations create
enthusiasm for regional designs
by Puanani Maunu



4 The East-West Encounter

DEPARTMENTS

- 16 **AIA Design Awards Program Featured**
by Paul Andrew Pollock, AIA
- 16 **Hawaii Pacific Architecture**
First anniversary marked in August
by A. Kimbal Thompson, AIA
- 17 **News**
- 20 **Tile Setting Technology**
Detaching system allows for successful
installation over many difficult surfaces
by Nancy Von, APR
- 23 **New Products**
Level-Right Cementitious Floor Topping
Now Available
- 26 **AIA Honolulu Design Award**
Architects Hawaii Ltd.

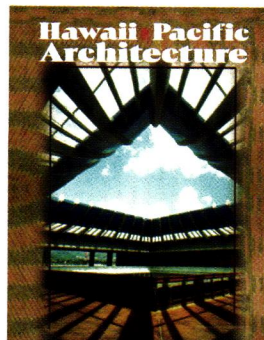


Photo by Camera Hawaii

PMP Company Ltd Publishers

Publisher/Executive Editor
Peggi Marshall Murchison

Managing Editor
Amye H. Turner

Art Director
Maria Bracho

Sales Manager
Miki Riker

Guest Editor
Kevin H. Funasaki

Production Manager
Rose Cabanlit

Graphics
Cheryl Ruddach,
Frances Teixeira
Rudy Tietjen

IN THIS ISSUE ...

Hawaii Pacific Architecture focuses on educational buildings this month. Nick Huddleston, AIA, discusses how well-designed and maintained schools show that a community cares about its children and its future. Bruce M. Clark addresses accessibility in educational facilities. Also combining architecture and education, Puanani Maunu provides highlights of the recent International Symposium on Asia Pacific Architecture. This month's cover features the Hawaii state Capitol, the 1995 AIA Honolulu Design Awards program 25-year Award recipient. The Hawaiian Tapa used on the cover and throughout the magazine is courtesy of the Bishop Museum.

Copyright©1995 PMP Company, Ltd.,
1034 Kilani Avenue, Wahiawa, Hawaii 96786.
Phone 621-8200. Fax 622-3025. All rights reserved.
Reproduction of the whole or any part of the contents of
Hawaii Pacific Architecture without written permission
is prohibited. Postmaster: Send change of addresses to
Hawaii Pacific Architecture (ISSN 0919-83111), 1034
Kilani Ave., Wahiawa, Hawaii 96786.

Hawaii Pacific Architecture is the monthly journal of the AIA Hawaii State Council. Subscriptions are \$28 per year. Opinions expressed by authors do not necessarily reflect those of either the AIA Hawaii State Council or the publisher. The appearance of advertisements or new products and service information does not constitute an endorsement of the items featured.

Design awards program, presentations create enthusiasm for regional designs

The East-West Encounter

by Puanani Maunu

The design awards jury commented that the essence of the Brambruk Living Cultural Centre is its great roof, which is alive like a great bird soaring up into the heavens.

Photo by Trevor Mein

The direction a society takes and the relationships, beliefs and aspirations of the people in that society must be carefully considered in the design of a building for a place. Architectural forms and details should respond sensitively to the context of the people and their traditions, the environment and the functionality and engineering of the built form. "The First International Symposium on Asia Pacific Architecture: The East-West Encounter," which took place in March of this year, provided a forum for discussion of how architecture is created in the Asia Pacific region.

Hosted by the University of Hawaii at Manoa School of Architecture, the East-West Center and the AIA Honolulu Chapter, the three-day symposium brought together nearly 350 architects, planners, academicians, ed-

ucators and governmental and professional representatives from more than 20 countries throughout the Asia Pacific region and the world. The event signaled the beginning of a collaboration between these professionals which focuses on issues of technology, practice, education and design, while sharing information and ideas on culture, traditions and maintaining the identity of a place in this time of increased globalization.

Papers presented at the symposium explored a wide range of topics, including "Balance and Life in Balinese Architecture;" "Vertical Industrial Buildings of Hong Kong;" "Kanaka Maoli and Western Environmental Design Traditions," "The Multi-level Farmhouses of Asahi Village, Japan;" "Traditional Housing of Melanesia, Micronesia and Polynesia;" "Residential District Planning and Environmental Design in Contemporary China;" "The Intelligent Traditional Buildings of Indonesia;" and "Environmentally Responsive Design in the Settlements of the Cockatoo." A major publication of selected papers presented at the symposium will be published in the fall of this year.

An integral part of the East-West Encounter was the "Kenneth F. Brown Asia Pacific Culture and Architecture Design Awards Program." The program was named in honor of Kenneth F. Brown, FAIA, well-known architect, humanitarian, businessman and civic leader who has devoted much of his life to serving the community and ensuring the restoration of historic buildings and sites.

Entries for the competition were received from 24 different countries around the Pacific Basin and spanned a wide range of building types and design approaches. Because the Pacific Basin is the largest region in the world, the projects varied tremendously in

