

Hawaii Pacific Architecture

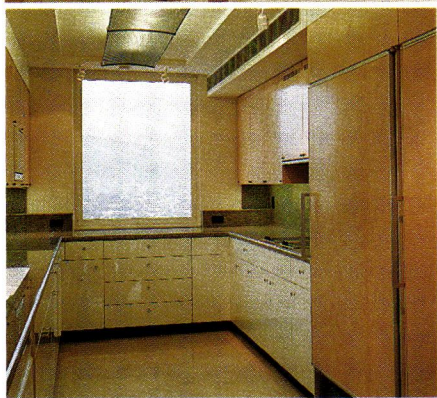
The Journal of the AIA Hawaii State Council • December 1994



Address Correction Requested

BULK RATE
U.S. POSTAGE
PAID
Permit No. 1023
Honolulu, Hawaii

PMP Company, Ltd., Publishers
1034 Kilani Ave., Ste. 108
Wahiawa, HI 96786



Building Castles in the Sky...

Allied Builders System was pleased to be asked to execute the grand scale remodeling of businessman Robert Taira's 36th story 3,800 sf Waikiki penthouse. Architect Bruce Newell's unique design solution called for demolishing the aging interior and creating a stunning tribute to the *kamaaina* bakery king's many accomplishments.

Today, multi-function cabinetry showcases Taira's extensive art collection, triples home storage and hides infrastructure upgrades. A theater-quality entertainment system and new central air-conditioning, hidden under three-inch ceiling panels also helped pave the way for truly palatial living.

"With the children gone, we opted to have everything light, airy, free-flowing toward the panoramic ocean view," said Taira. "We were thrilled with the plans and even more thrilled with the results..."

Adds Newell: "Allied's reputation for professional organization, quality workmanship and client caring preceded our introduction. They performed as advertised. We look forward to doing business with them again."



ALLIED BUILDERS SYSTEM

Teamwork. Our motto. Our method.

1717 Akahi Street, Honolulu, Hawaii 96819, Telephone (808) 847-3763
Contractor License BC-5068



A Council of the American
Institute of Architects

1994 -1995 Officers

President

Stanley S. Gima, AIA

Vice President/

President-elect

Charles A. Ehrhorn, AIA

Secretary/Treasurer

E. Alan Holl, AIA

Directors

Steven H. Heller, AIA

Gerald N. Hiyakumoto, AIA

Virginia Macdonald, AIA

Glenn E. Mason, AIA

Kurt H. Mitchell, AIA

John Okita, AIA

Francis Oda, AIA

**AIA Hawaii State Council
and AIA Honolulu**

1128 Nuuanu Avenue

Honolulu, Hawaii 96817

545-4242

AIA Honolulu President

Sheryl B. Seaman, AIA

AIA Hawaii Island

P.O. Box 491

Hilo, HI 96721-0491

(808) 961-0374

President

L. Taylor Cockerham, AIA

AIA Maui

P.O. Box 929

Wailuku, Hawaii 96793

(808) 244-9574

President

Alvin M. Yoshimori, AIA

HPA Editorial Board

A. Kimbal Thompson, chairman;

Greg Bayless, AIA, Maui; Jim

Freeman, AIA; Fritz Harris-Glade,

AIA, Hawaii; Henry Grimbball, AIA;

Glenn Mason, AIA; Lorrin

Matsunaga, AIA; Jeff Nishi, AIA;

Sandi Quildon, AIA; and Gordon

Tyau, AIA.

Hawaii Pacific Architecture is the monthly journal of the AIA Hawaii State Council. Subscriptions are \$28 per year. Opinions expressed by authors do not necessarily reflect those of either the AIA Hawaii State Council or the publisher. The appearance of advertisements or new products and service information does not constitute an endorsement of the items featured.

Leadership message

Involvement Needed to Move Forward

by Sheryl B. Seaman, AIA
Honolulu Chapter President

Lately, I have been wondering what leadership is about from several perspectives. Part of my pondering is stimulated by Tom Peters' book "Crazy Times Call for Crazy Organizations;" part is due to the approaching end of my tenure as AIA Honolulu Chapter president; and the other portion can be attributed to my recent completion of the partners' planning retreat for Group 70 International.

I have decided that leadership is a universal issue. It requires a certain level of commitment whether the position of leadership is in a firm, nonprofit organization, project team or a class in school.

The first commitment is to a vision. To be effective that vision must be shared by all of the individuals who have to make things happen. I have a vision for the AIA in Hawaii that would include active cooperation between both chapters and the state council to educate the public about the value of architecture.

If this vision were realized many things would take place:

- Our organization would have a higher level of participation than it currently has.

- There would be frequent informal gatherings of members who share an interest in particular topics and the outcome of these meetings could be available to all members via E-mail.

- The AIA office would be in constant use by members for meeting or socializing and by the general public who would be looking for information on architects or other issues regarding the built environment.

- AIA members and the organization would be in the forefront of the media

for contributing to the improvement of the community, not as donors to political campaigns.

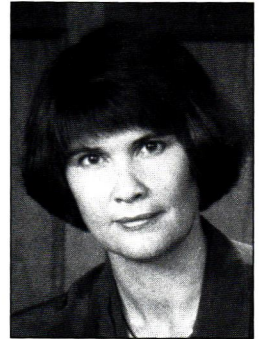
- The AIA executive vice president would be in constant demand as a speaker. The organization would also have an active speakers bureau which would convey the word of architecture to anyone interested in listening.

- All newspaper and magazine references to projects of any kind would never fail to identify the architect any more than a reference to a book would omit the author.

- Other professional organizations would constantly cite the AIA as an example of how they should be operating.

Leadership requires the ability to motivate others and to bring them into consensus with a vision. It seems a shared vision is not a problem, however, motivation is. This has been an area of frustration for me this year. A great deal has been accomplished but it is always through the hard work of the same people. There is only so much time in a day and unless a larger percentage of the membership participates, the organization will continue to be limited in what it can do.

Leaders must be able to see the "bigger picture." They must be willing to make hard decisions. As budget pressures increase and program demands grow, decisions regarding what AIA can afford will have to be made. High marks should be given to this year's executive committee for taking this task in hand.

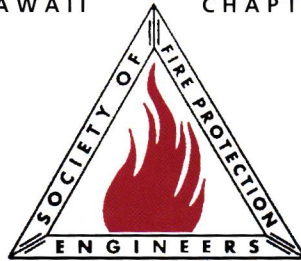


Sheryl B. Seaman

HAWAII SFPE SEMINAR PRESENTATION
1994 NFPA 101
THE LIFE SAFETY CODE SEMINAR
 January 17-20, 1995

The Hawaii Chapter of the Society of Fire Protection Engineers is sponsoring this seminar through a special arrangement with the National Fire Protection Association. This seminar is a must for Architects responsible for the proper application, interpretation, and enforcement

HAWAII CHAPTER



of NFPA 101 The Life Safety Code. A knowledge of NFPA 101 is essential to Architects involved with the design of Health Care Facilities, Correctional Facilities, any projects involving the federal government including the Navy, Army, Air Force, Coast Guard, GSA, the U.S. Postal Service, and many projects supported by federal funding.

1994 NFPA 101 LIFE SAFETY CODE SEMINAR

Architects can gain vital knowledge needed to apply the 1994 Life Safety Code with confidence. More exercises, less repetition, and much greater coverage of means of egress mark this comprehensive review of NFPA 101. From the fundamentals to new requirements and what they mean to you and your facility, this seminar is filled with hands-on highly specific information that really pays off in job performance.

The seminar will be taught by Ron Cote, P.E., Senior Life Safety Engineer at the National Fire Protection Association and James K. Lathrop, Fire Protection Engineer and former Chief Life Safety Engineer with NFPA and now a consultant with Koffel & Associates. These are two of the best instructors in the business.

5 PRACTICAL REASONS TO ATTEND THIS SEMINAR:

1. Learn the equivalency concept: what it is and how to use it.
2. Learn how to calculate occupant load and egress capacity.
3. Learn how to measure travel distance.
4. Learn how to analyze compliance with the Code.
5. Learn key Code references that apply during inspections.

4 DAYS OF HARDHITTING INSTRUCTION HELP YOU APPLY THE CODE WITH CONFIDENCE

Days 1, 2 and 1/2 of Day 3

- Administration, Chapters 1-4
- Building Service, Ch. 7
- Means of Egress, Ch. 5

- Special Structures, Ch. 30
- Fire Protection, Ch. 6
- Operating Features, Ch. 31

Second Half of Day 3

- Health Care Occupancies, Ch. 12-13
- Residential Board & Care, Ch. 22-23

Day 4

- Detention & Correctional, Ch. 14-15
- Assembly, Ch. 8-9
- Education, Ch. 10-11
- Residential, Ch. 16-21
- Business, Ch. 26-27

Cost: \$495

Seminar attendees will receive a copy of the 1994 edition of NFPA 101, a fully illustrated participant manual and handouts. After successful completion of the seminar, each participant will receive a Certificate of Completion and 3.2 CEU's. The registration fee also includes coffee breaks & lunch. *Please note that the standard NFPA charge for this seminar is*

\$695 (and it's not scheduled to come to Hawaii)

Location: The Pearl Harbor Palms (formerly the Pearl Harbor CPO Club) is located on Center Dr., off Kam. Hwy., near Pearl Harbor. It is not on base. ID's and stickers are not needed. Parking is available at no charge.

Payment: Fee must accompany application. Payment may be made by check or money order. The applicant will receive a receipt and confirmation. Charge cards will not be accepted. **Make checks payable to Hawaii Chapter SFPE** and mail to Hawaii Chapter SFPE, c/o 720 Iwilei Road, Suite 412, Honolulu, Hawaii 96817-5316.

Deadline for registration is Thursday, January 12, 1995.

For information contact Sam Dannaway, Program Chairman, (808) 526-9019 / Fax (808) 537-5385.

REGISTRATION FORM

1994 NFPA 101 LIFE SAFETY CODE SEMINAR

January 17-20, 1995

Name: _____

Organization: _____

Address: _____

 City, State, Zip Code, and Phone

Cost: \$495, Purchase Order/Invoice No. _____

Mail to: Hawaii Chapter SFPE, 720 Iwilei Rd., Suite 412, Honolulu, HI 96817