

HAWAII ARCHITECT

March 1994

- ▶ *Architects and Education*
- ▶ *Survival in the 90s*
- ▶ *Modern Kitchens*

INTERNATIONAL
CENTER



BULK RATE
U.S. POSTAGE
PAID
Permit No. 1023
Honolulu, Hawaii

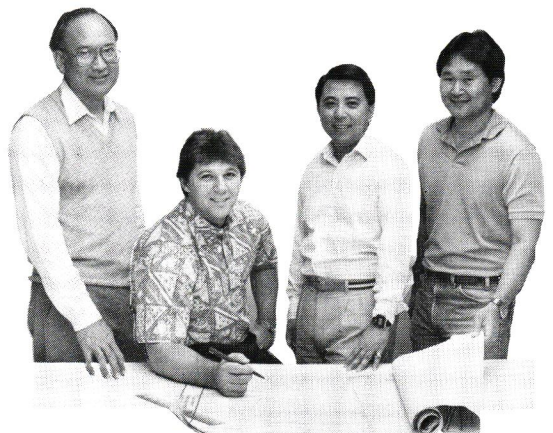


When you can't halt hospitality... Allied comes through

Major improvements in scattered areas at the Princess Kaiulani Hotel called for a supremely accommodating contractor. Even as beautifully redesigned lobbies emerged, envisioned by the Gulstrom Kosko Group, and the popular Aina Hau Showroom expanded with the overview of Ted Garduque, AIA, the hotelier continued to serve.

"We were on a tight timeline facing a holiday opening," observed Garduque. "Allied's crews were always responsive and concerned with quality execution. Even when the normal problems in renovation occurred, they stayed on top of things."

Adds GKG's David Chung, AIA: "Allied reacts well to the design professional. Beyond this, they know that change at hotels cannot interfere with visitor pleasure. They worked odd hours and with diplomacy when hotel guests were around."



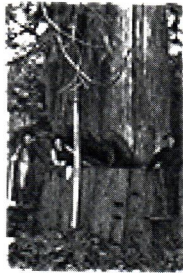
ALLIED BUILDERS SYSTEM
Teamwork. Our motto. Our method.

1717 Akahi Street Honolulu, Hawaii 96819 Telephone (808) 847-3763
Contractor License BC-5068

Architect David Chung, Hotel Food and Beverage Manager Chip Bahouth,
Architect Ted Garduque, ABS Project Manager Ed Sakai

The Problem: A Changing Resource Base

The simple truth is solid-sawn lumber isn't what it used to be. As what's left of our old-growth forests is set aside for recreation and habitat preservation, these giant, mature trees have vanished as a lumber resource. Today's industry is limited to younger, smaller trees that yield little sizable lumber. Much of their wood is weaker, with more defects. Ironically, the strongest wood in a young tree is completely wasted on ordinary, solid-sawn lumber; it can't utilize the strongest fibers, found closest to the bark. But we can.



The days are gone when giant, old-growth trees provided all the straight and true lumber we needed. It's a simple fact of nature that to today's smaller, younger trees produce limited sizes of solid-sawn lumber — with more structural weaknesses and defects.

Silent Floor®

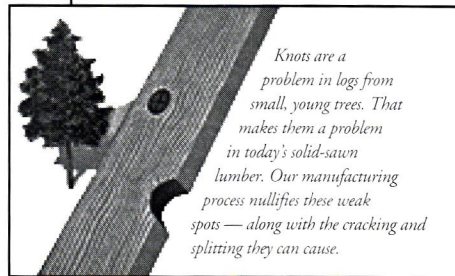
S Y S T E M
SILENT FLOOR® JOISTS, MICRO=LAM® LVL
AND PARALLAM® PSL BEAMS OR COLUMNS,

Improving On The Natural Wonders Of Wood

Using patented technologies developed over three decades, we can take a tree apart and put its fibers back together in ways that take full advantage of its natural strengths — wherever they're found on the tree. Starting with trees too young and small for solid-sawn lumber, we can produce engineered lumber that's bigger — and better — than anything you can cut from a tree today. In the process, we engineer out the natural weaknesses and inconsistencies inherent in solid-sawn wood. The result? High-quality lumber that's superior to the original log. With major gains in size, strength, and dimensional stability. And because our technologies are leaders in resource efficiency, what's good for new home-builders is good for the environment, too.

The Lasting Solution: Making More Of Every Tree

While solid-sawn lumber uses only about 50 percent of each log, our engineered lumber uses as much as 80 percent. So we use fewer trees to do the same job. We can also use small, young quickly regenerated trees, since the size and quality of our engineered lumber are not limited by the size and quality of the raw log. What's more, we've designed more structurally efficient building shapes, like our Silent Floor® I-Joist. So less wood does more work. By making the most of every fiber, we produce cost-effective, readily available lumber that maximizes underutilized resources and minimizes impact on the environment.



Knots are a problem in logs from small, young trees. That makes them a problem in today's solid-sawn lumber. Our manufacturing process nullifies these weak spots — along with the cracking and splitting they can cause.

**To Purchase These Environmentally
Friendly Wood Products, See Your
Local Dealers.**

Honsador

Oahu: 682-2011
Kauai: 246-2412
Big Island: 961-6000
Maui: 877-5045

Hawaii Pacific Lumber

94-1024 Waipio Uka St. Suite 202
Waipahu, HI 96797
Phone: 676-4001
Fax: 676-4435

Rinell Wood System

429 Waiakamilo Rd. Room 1
Honolulu, HI 96817
Phone: 841-7688
Fax: 841-7680

Aloha Lumber Co.

Kauai: 822-9818
Hilo: 935-2215
Kailua-Kona: 329-0951