

# HAWAII ARCHITECT

September 1993

- ▶ *Protection from Hurricanes*
- ▶ *Koa Wood Substitutes*
- ▶ *1993 HC/AIA Awards*

BULK RATE  
U.S. POSTAGE  
PAID  
Permit No. 1023  
Honolulu, Hawaii



## When you need a contractor to beat the clock and not cut corners...

...the craftsmen from Allied Builders come through. At City Bank's new data center in Mapunapuna, Allied finished 70 days early in executing intricate plans from GTE Hawaiian Tel and Geoffrey Paterson & Associates.

"They don't just talk teamwork, they get right down and *do* it," recalls GTE Hawaiian Tel's Project Manager Mark Peterman. "We had a fairly tight space, a lot of equipment, and needed everything yesterday."

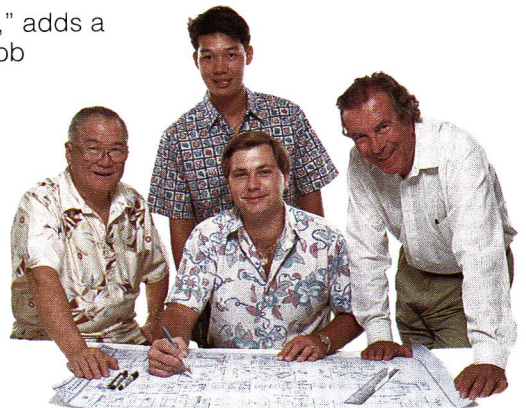
"I'd say they almost made 'yesterday' our move-in date," adds a pleased Ben Fong from City Bank, who monitored the job carefully. "There was quality performance from infrastructure on out."

"We always like working with Allied," notes Paterson, the project architect. "They understand design, respect budgets, stay ahead of problems and get along well with people."



**ALLIED BUILDERS SYSTEM**

Teamwork. Our motto. Our method.



1717 Akahi Street  
Honolulu, Hawaii 96819  
Telephone (808) 847-3763  
Contractor License BC-506

Benjamin B. Fong, City Bank  
Mark Miyashiro, Allied Builders System  
Mark A. Peterman, GTE Hawaiian Tel  
Geoffrey G. Paterson, Geoffrey Paterson & Associates, Inc.



Tile work at The National Memorial Cemetery Of The Pacific had to withstand heavy traffic, yet be aesthetically in tune with "Punchbowl's" beauty. The non-skid, attractive texture of Summitville's Williamsburg and Concord Flash Walnut brick tiles was ideal for the 22,000 foot walkways. Unglazed mosaic flooring in public areas also is non-skid while a combination of Williamsburg and Pavers enhances seating locations. Another historic moment in creative tile design.

Phone 526-0467

Contractor:  
Sandwich  
Islands  
Construction, Ltd.

HAWAII CERAMIC TILE, MARBLE  
& TERRAZZO PROMOTION PROGRAM



# Historic



## THE HAWAII STATE COUNCIL

1993 Hawaii State Council/  
AIA Officers

**President,**  
Daniel G. Chun, AIA

**Vice President/  
President-elect,**  
Stanley S. Gima, AIA

**Secretary/Treasurer**  
E. Alan Holl, AIA

**Directors**  
Christopher J. Smith, FAIA  
Gerald N. Hiyakumoto, AIA  
Virginia Macdonald, AIA  
John Okita, AIA  
Charles A. Ehrhorn, AIA  
Steven H. Heller, AIA  
Francis Oda, AIA

**AIA Honolulu**  
1128 Nuuanu Avenue  
Honolulu, Hawaii 96817  
(808) 545-4242

**Honolulu Chapter President**  
Kurt H. Mitchell, AIA

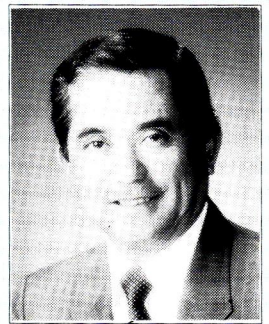
**AIA Hawaii Island**  
P.O. Box 1893  
Kamuela, Hawaii 96743  
(808) 885-4431

**Hawaii Island Section  
President**  
Ed W. Campbell, AIA

**AIA Maui**  
P.O. Box 929  
Wailuku, Hawaii 96793  
(808) 244-9574

**Maui Chapter President**  
Thomas R. Cannon, AIA

*Hawaii Architect* is a monthly journal of the Hawaii Council/American Institute of Architects. Subscriptions are \$24 per year. Opinions expressed by authors do not necessarily reflect those of either the Hawaii State Council/AIA or the publisher. The appearance of advertisements or new products and service information does not constitute an endorsement of the items featured.



Stanley S. Gima, AIA

## Kamehameha Schools Site for AIA State Convention

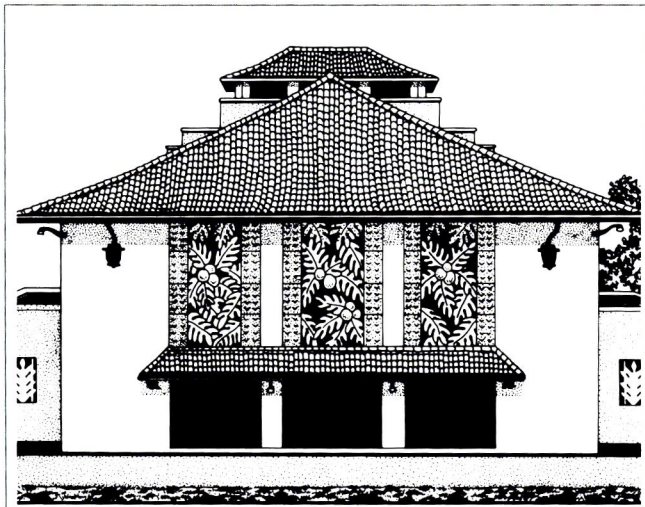
**T**he beautiful hillside campus of the Kamehameha Schools is a very appropriate location to stage a convention for architects. Many exceptional examples of graceful Hawaiian architecture blend with the landscaping and the mountainous environment of the Schools' beautiful 600-acre campus overlooking the city below. For example, most of the convention proceedings will occur in the Schools' auditorium, which was designed by C. W. Dickey.

Convention attendees (and their spouses and friends) will have a rare opportunity to join an architectural tour of this unique campus on the second day of the convention, Oct. 10. The tour is one of the social activities planned to complement the technical and business facets of the convention, which begins early Saturday morning, Oct. 9.

Although the statewide convention will be filled with a variety of scheduled activities, we have planned many interjections of "free time" throughout the convention schedule. During these free moments, you could enjoy refreshments of food and drink and views of trees and mountains above. Or enjoy views of the city below and the ocean beyond. Or you could meander

through the many exhibits, and talk with sponsors from the construction industry. Or just renew old acquaintances (or start new friendships), while enjoying one of several inviting walkways and courtyards on the campus.

*Survival in the 90s* is the convention theme, and the workshops and seminars will be full of valuable information worth several times the price of admission. However, it's the free "intangibles" of the 1993 Convention—the fellowship, new friendships, relaxing walks, the panoramic views, and glimpses of



▲ Princess Ruth Ke'elikōlani Auditorium, 1937.

architectural history—that will probably provide the pleasant memories you'll treasure for a long time.

So make the decision and register now. The convention is only a month away, and the hard-working Convention Committee is meeting each week, working out the convention details while anxiously awaiting the latest registration count, for an indication of the expected attendance on which to base the final planning commitments. So why not do the committee a big favor and register now? You deserve a break from the routine; come and enjoy the 1993 convention—and also learn some new tricks to help you "survive in the 90s!"